

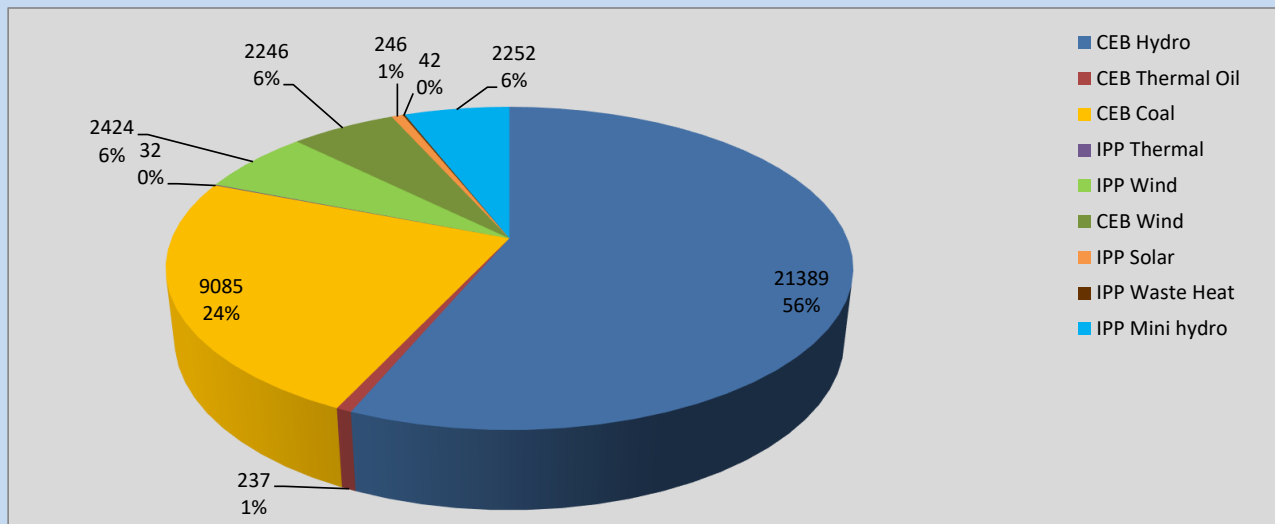
# Generation and Reservoirs Statistics

August 6, 2022



PUBLIC UTILITIES COMMISSION OF SRI LANKA

## Daily Generation Mix in MWh



**Total Generation** **37,953 MWh**

Note: Above data is excluding contribution from Roof Top Solar, 1MW Solar and certain Mini Hydro plants

## Cumulative Dispatch

Note: Following data is Excluding contribution from Roof Top Solar, 1MW solar and Mini Hydro plants

### For Current Month

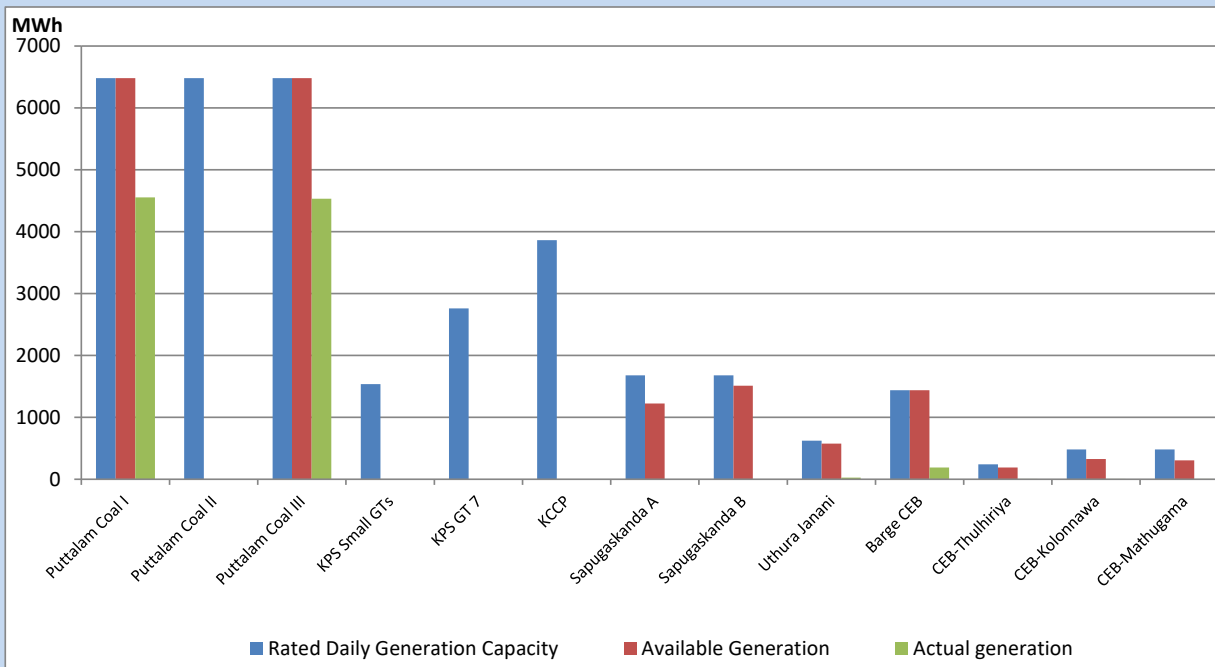
Category	Dispatch (GWh)	Percentage
CEB Hydro	120.64	52.81%
CEB Thermal Oil	4.06	1.78%
CEB Coal	65.55	28.69%
IPP Thermal	0.03	0.01%
SPP Wind	14.15	6.19%
CEB Wind	10.93	4.78%
SPP Solar	1.16	0.51%
SPP Solid Waste	0.15	0.07%
Mini Hydro	11.78	5.16%
<b>Total</b>	<b>228.45</b>	

### For Current Year

Category	Dispatch (GWh)	Percentage
CEB Hydro	2,618.8	29.37%
CEB Thermal Oil	1,059.4	11.88%
CEB Coal	3,485.2	39.08%
IPP Thermal	972.5	10.90%
SPP Wind	198.1	2.22%
CEB Wind	212.2	2.38%
SPP Solar	55.1	0.62%
SPP Solid Waste	44.2	0.50%
Mini Hydro	272.8	3.06%
<b>Total</b>	<b>8,918.0</b>	

## CEB owned Thermal Plant Dispatch

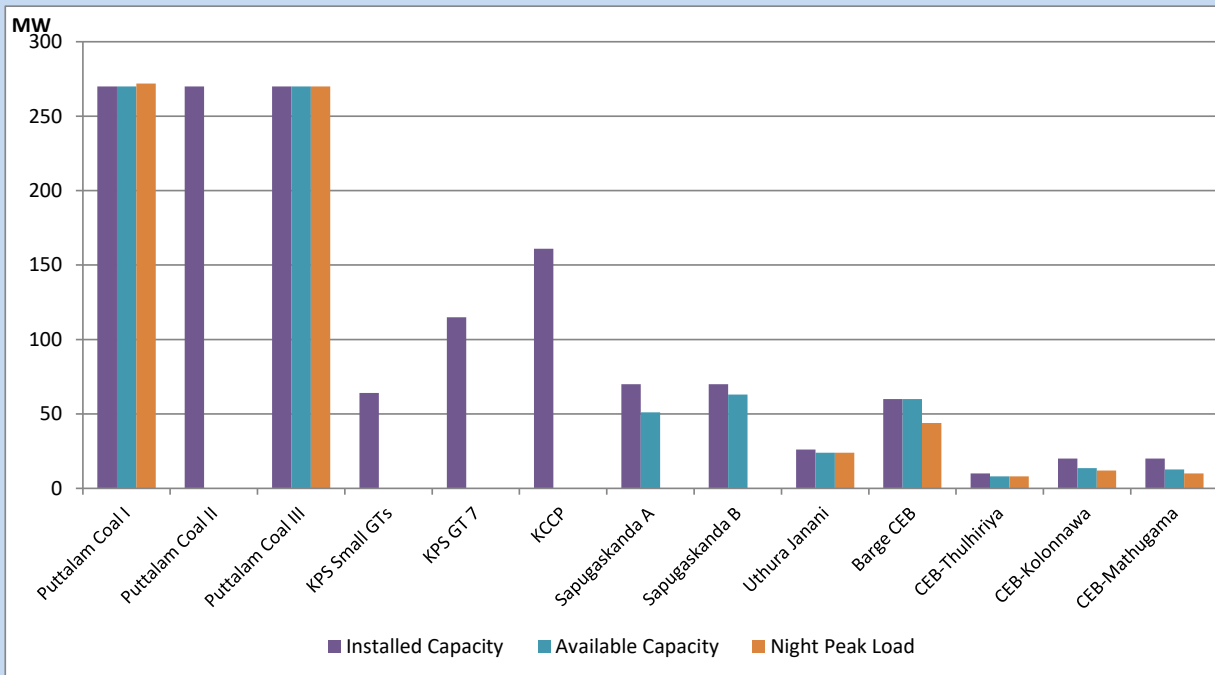
August 6, 2022



Available Generation is estimated based on plant availability at 6.00am on

August 7, 2022

## CEB owned Thermal Plant Loading at the Night Peak



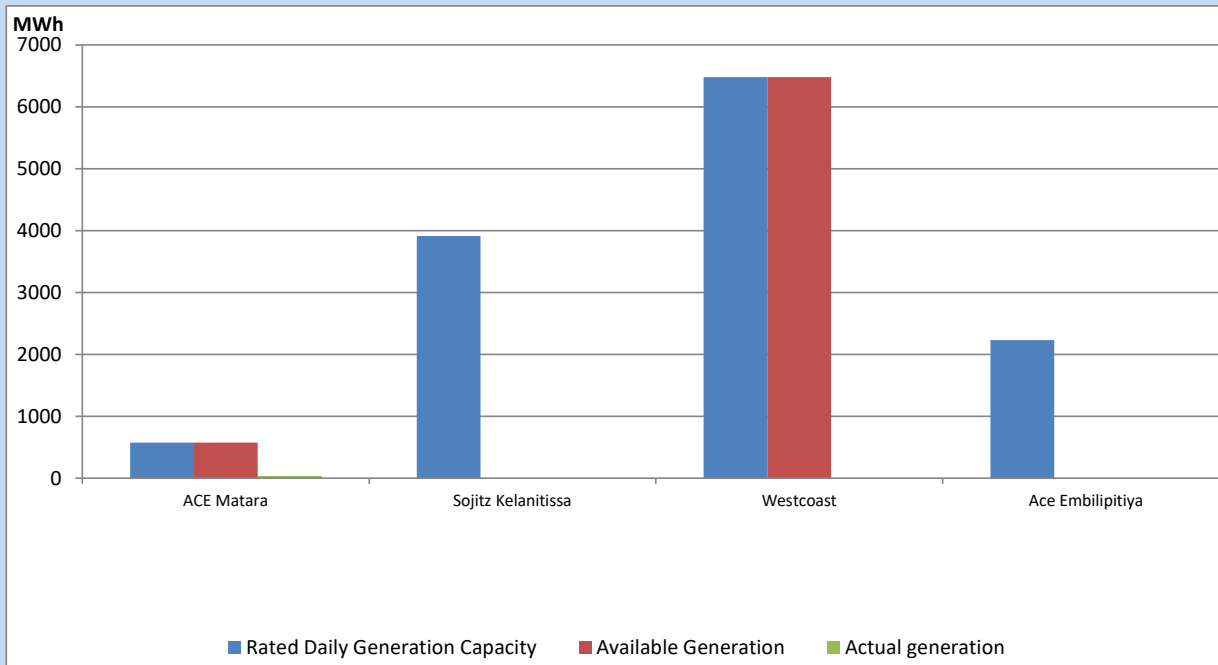
Note- Plant availability is recorded at 6.00 am on

August 7, 2022

## IPP owned Thermal Plant Dispatch

August 6, 2022

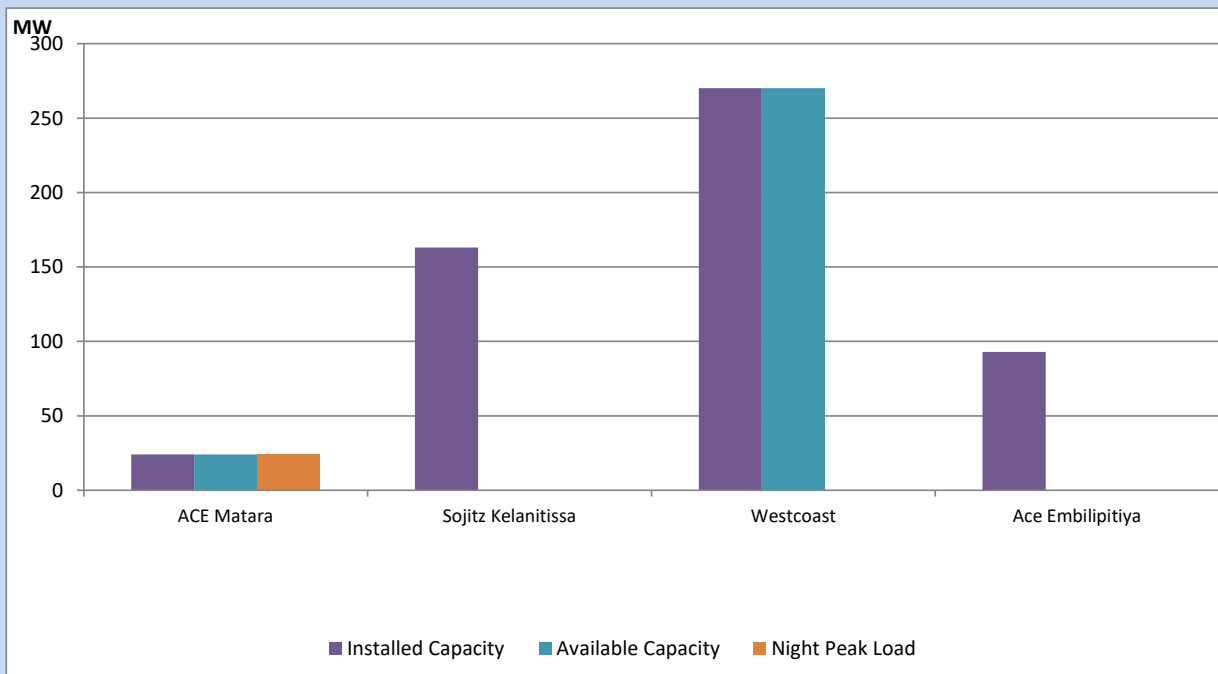
Asia Power, V Power Pallekale, Vpower Galle, V Power Horana, Vpower Hambantota, Vpower Valachchena and Altaqa Mahiyanganaya are not available due to expiration of PPAs



Available Generation is estimated based on plant availability at 6.00am on

August 7, 2022

## IPP owned Thermal Plant Loading at the Night Peak

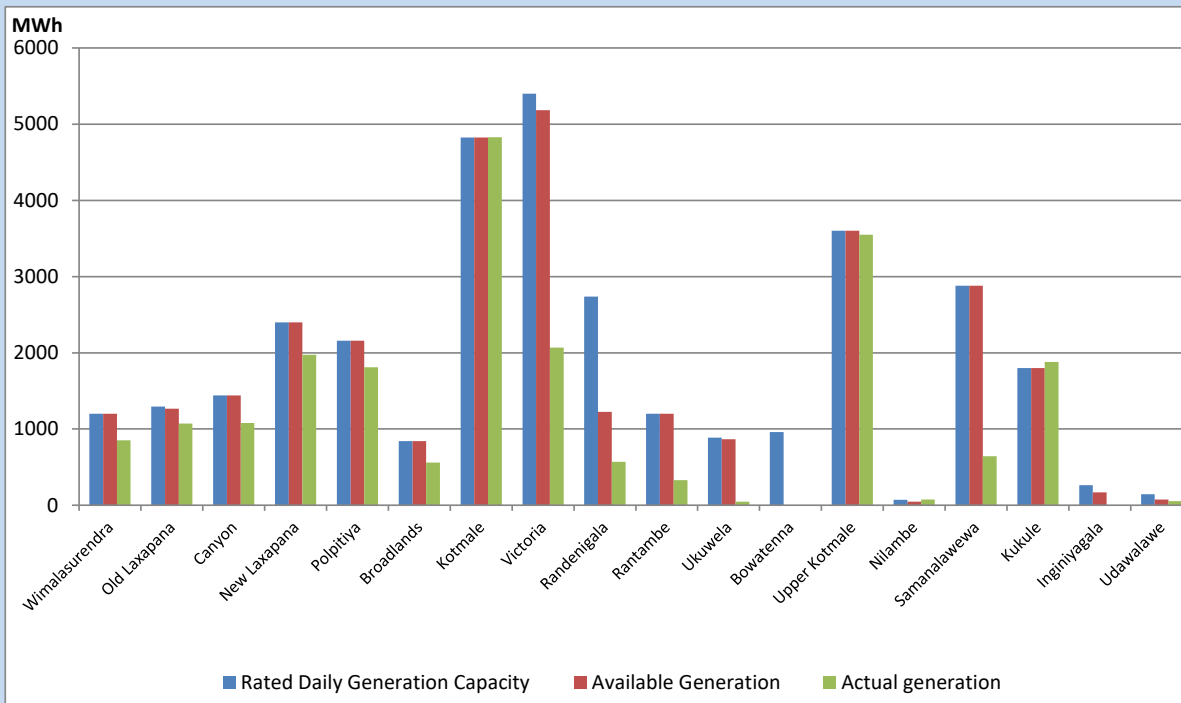


Note- Plant availability is recorded at 6.00 am on

August 7, 2022

## Major Hydro Plant Dispatch

August 6, 2022

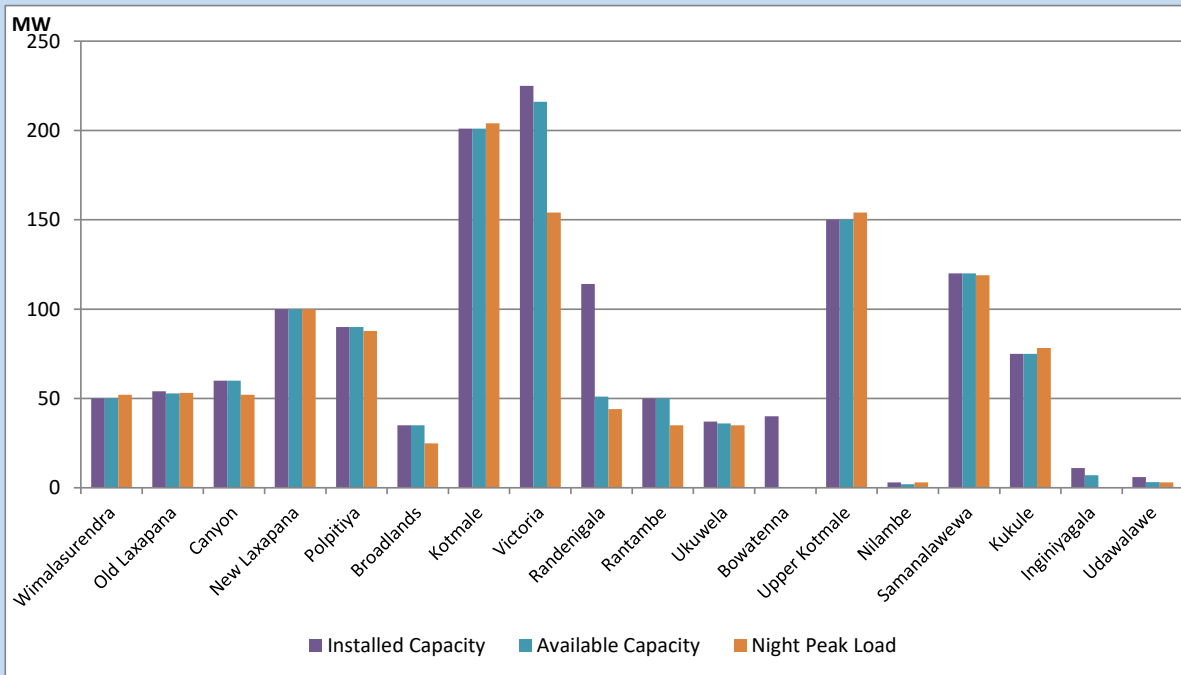


Available Generation is estimated based on plant availability at 6.00am on August 7, 2022  
 Broadlands power plant is operating in the Commissioning Stage

August 7, 2022

## Major Hydro Plant Loading at Night Peak

August 6, 2022



Note- Plant availability is recorded at 6.00 am on August 7, 2022  
 Broadlands power plant is operating in the Commissioning Stage

## Summary of Major Plant performance

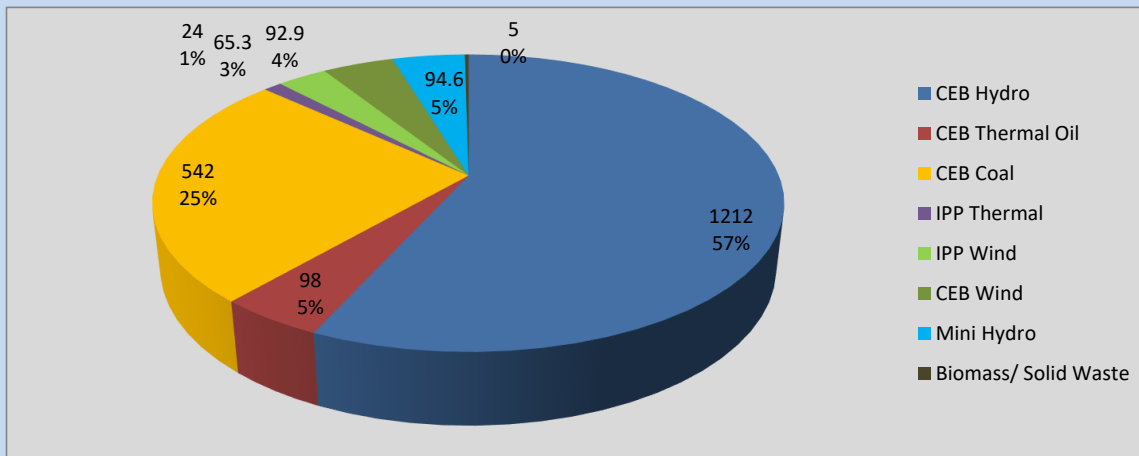
Plant	Installed Capacity	Plant Availability	Night peak Load	Plant Dispatch
	(MW)	(MW)	(MW)	(MWh)
Wimalasurendra	50	50	52	851
Old Laxapana	54	53	53	1,070
Canyon	60	60	52	1,080
New Laxapana	100	100	100	1,974
Polpitiya	90	90	88	1,809
Broadlands	35	35	25	560
Kotmale	201	201	204	4,830
Victoria	225	216	154	2,068
Randenigala	114	51	44	570
Rantambe	50	50	35	328
Ukuwela	37	36	35	47
Bowatenna	40	0	0	0
Upper Kotmale	150	150	154	3,551
Nilambe	3	2	3	73
Samanalawewa	120	120	119	643
Kukule	75	75	78	1,880
Inginiyagala	11	7	0	0
Udawalawe	6	3	3	55
Puttalam Coal I	270	270	272	4,554
Puttalam Coal II	270	0	0	0
Puttalam Coal III	270	270	270	4,531
KPS Small GTs	64	0	0	0
KPS GT 7	115	0	0	0
KCCP	161	0	0	0
Sapugaskanda A	70	51	0	0
Sapugaskanda B	70	63	0	0
Uthura Janani	26	24	24	26
Barge CEB	60	60	44	192
CEB-Thulhiriya	10	8	8	5
CEB-Kolonnawa	20	14	12	7
CEB-Mathugama	20	13	10	7
ACE Matara	24	24	24	32
Sojitz Kelanitissa	163	0	0	0
West Coast	270	270	0	0
ACE Embilipitiya	93	0	0	0
<b>Total</b>	<b>3,397</b>	<b>2,365</b>	<b>2,121</b>	<b>37,953</b>

Plant availability is the availability recorded at 6 am on

August 7, 2022

## Contribution to the Night Peak in MW

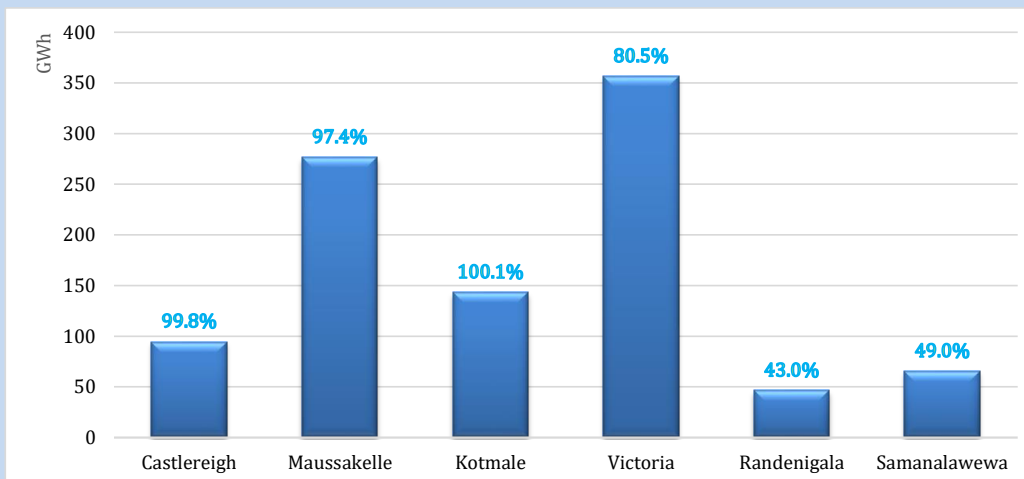
August 6, 2022



Night Peak*	2,133.6 MW
Day Peak	1,642.3 MW
Minimum Demand	1,141.9 MW

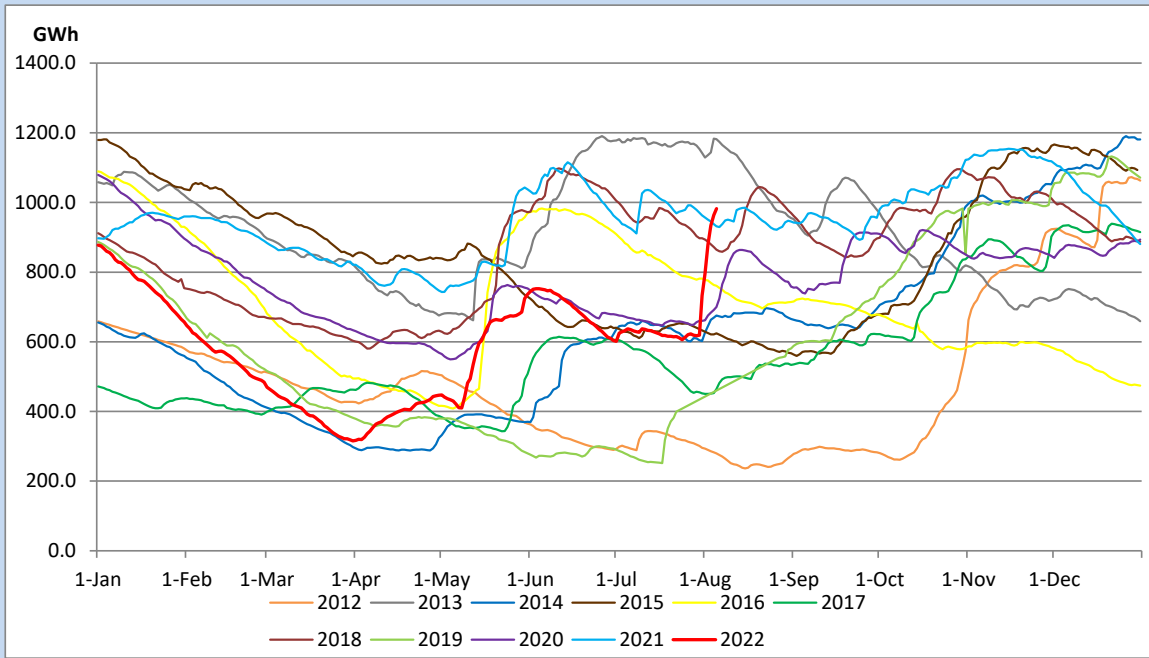
Above figures are excluding contribution from Roof Top Solar, 1MW solar, certain Wind plants and Mini Hydro plants

## Reservoir Levels - as at 06.00 Hr on August 7, 2022

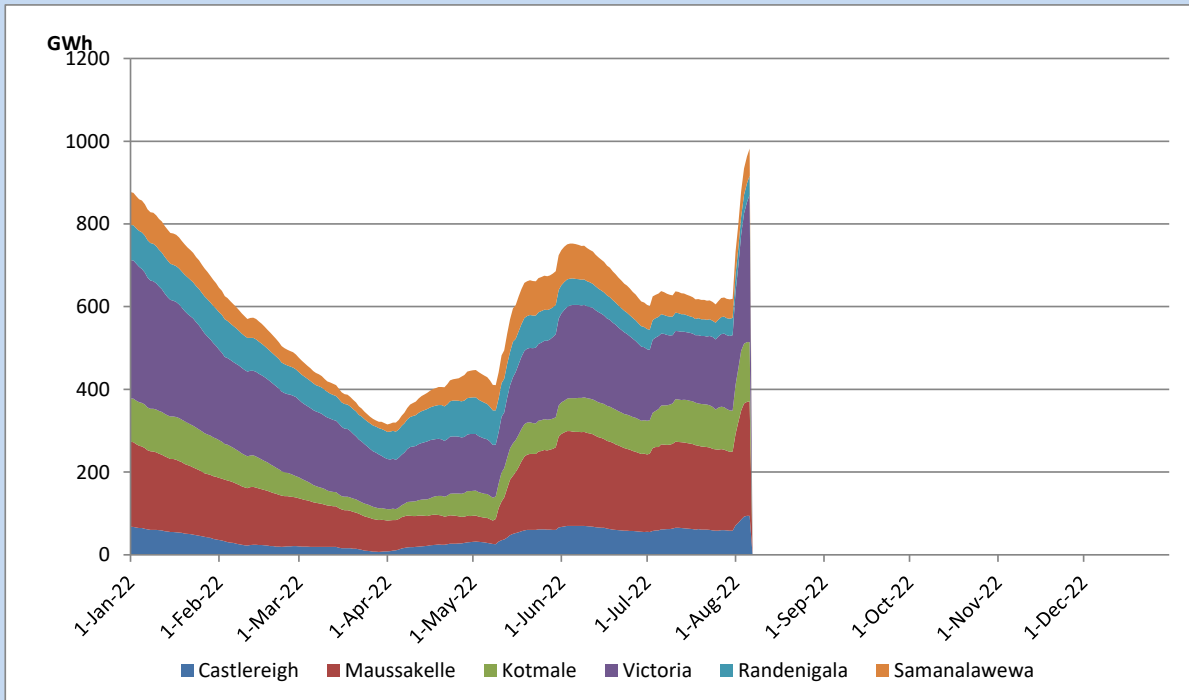


Total Reservoir Level	982.2 GWh
% of Total capacity	81.5%

## Comparison of Total Reservoir Storage Levels with Past Years

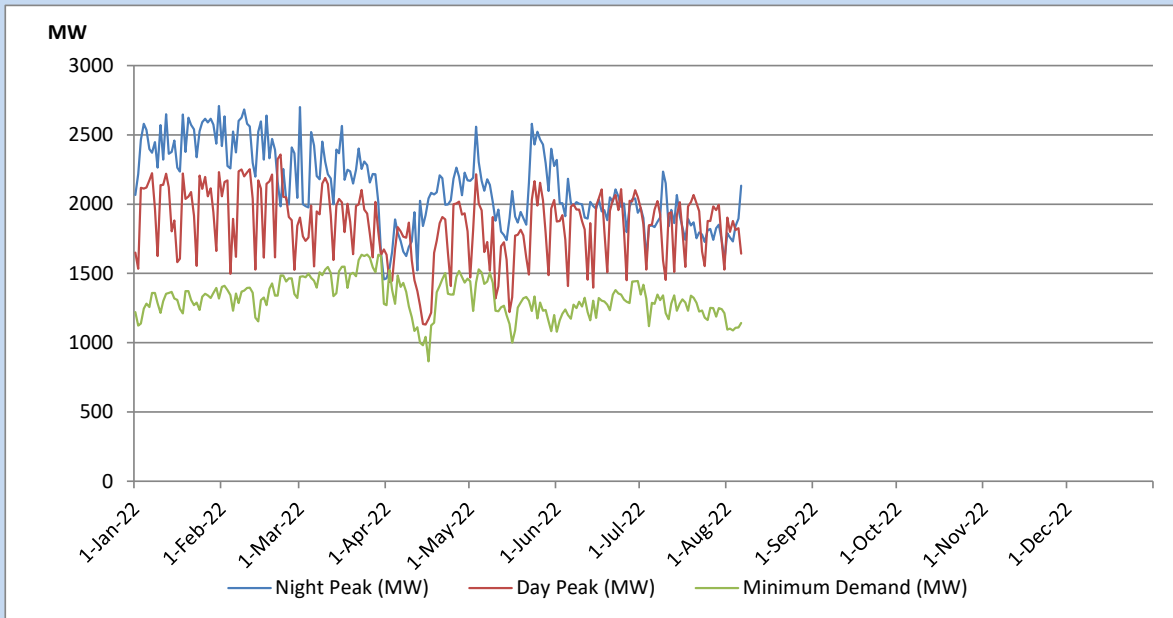


## Variation of Major Hydro Reservoir Levels in the current year (GWh)





## Variation of Demand during the current year

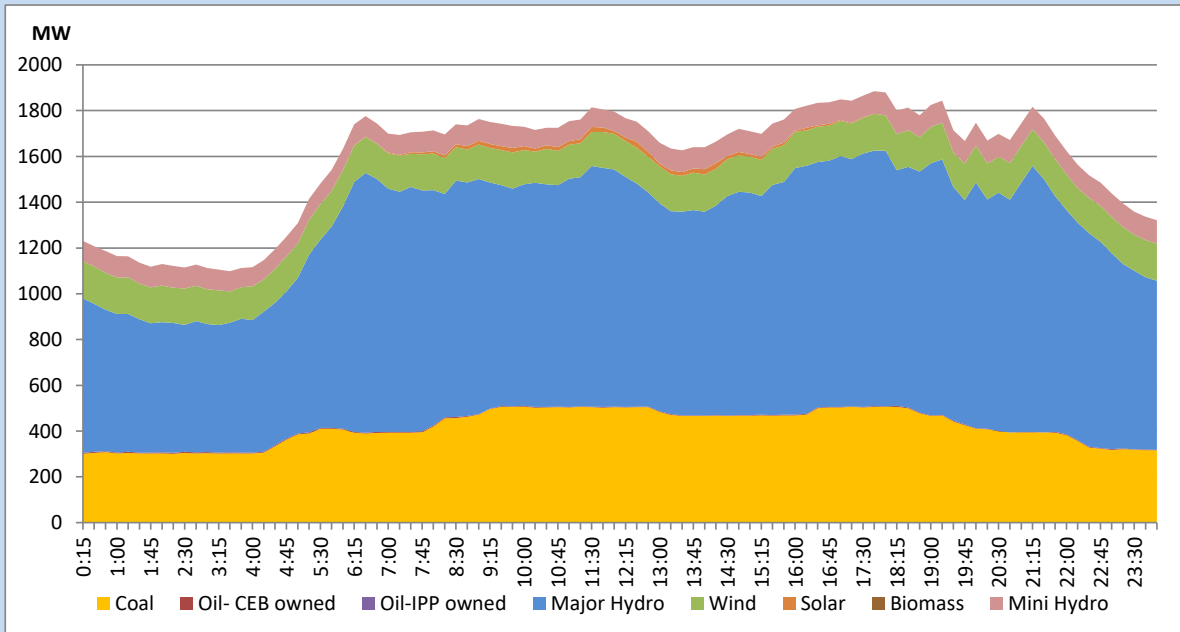


The above figures are excluding contribution from Roof Top Solar, 1MW solar, certain Wind plants and Mini Hydro plants

## Daily Load Curve of the Previous day

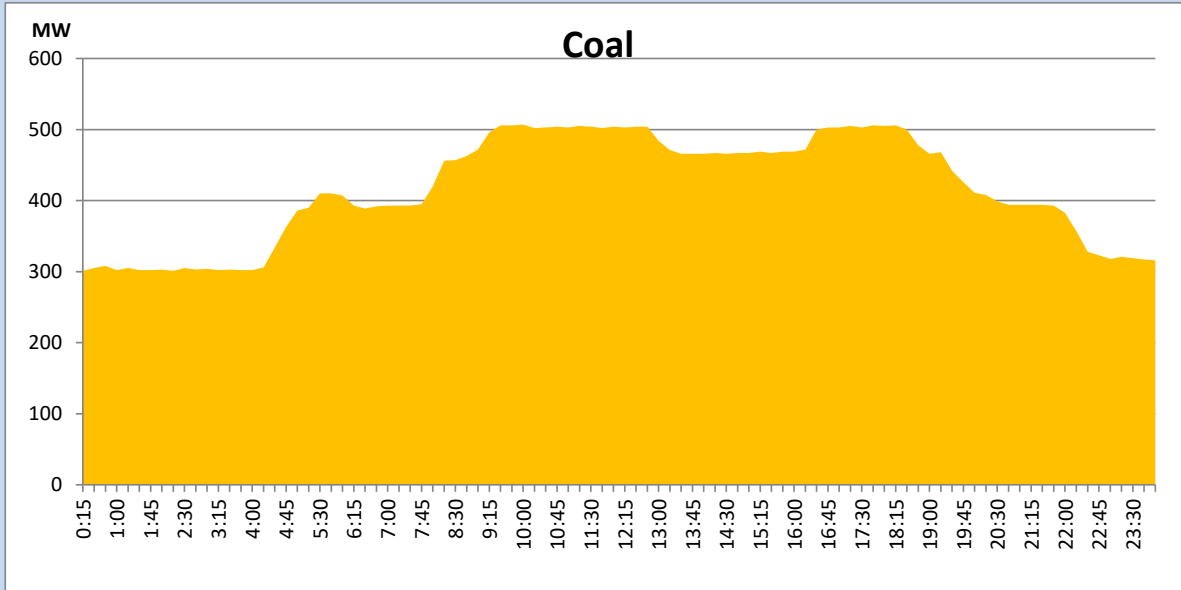
August 5, 2022

Solar and wind data is based on Telemetered Power Stations only



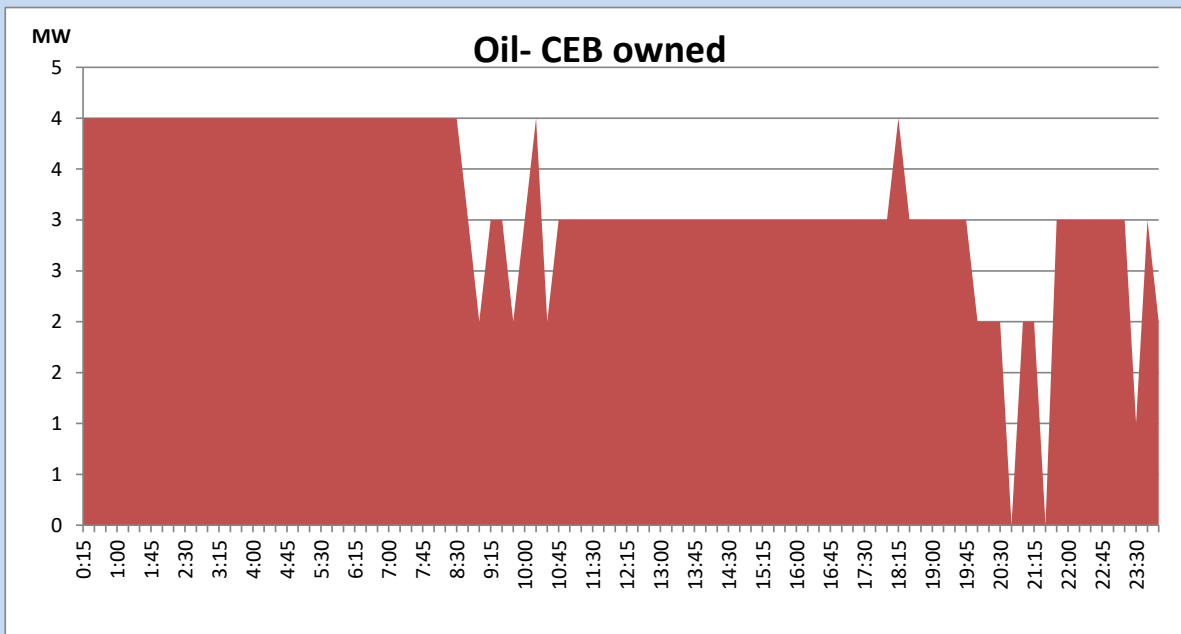
## Coal Generation during the Previous day

August 5, 2022



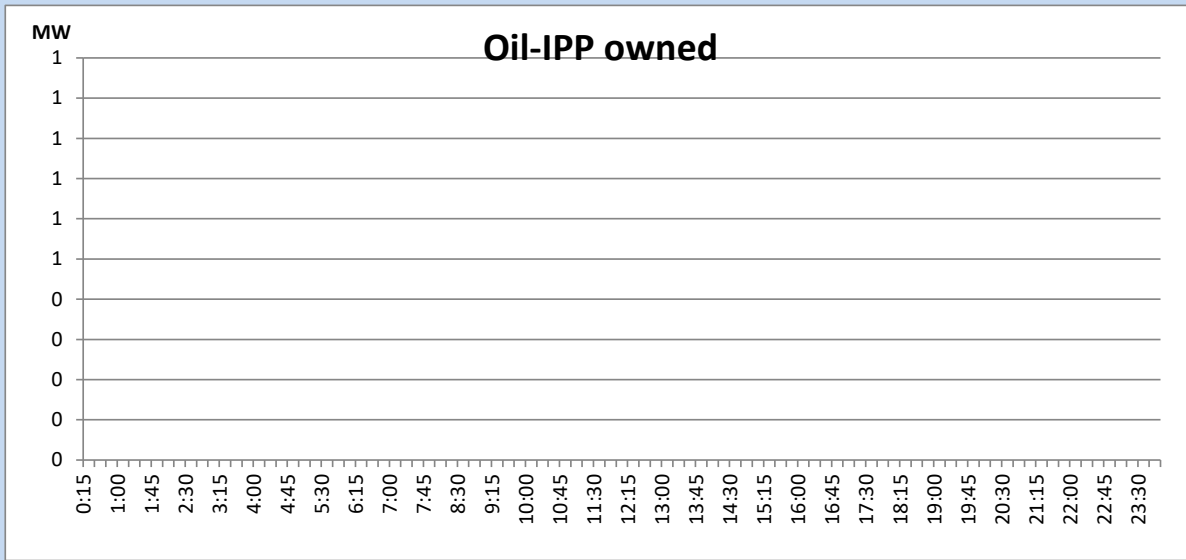
## CEB Oil Plant Generation during the Previous day

August 5, 2022



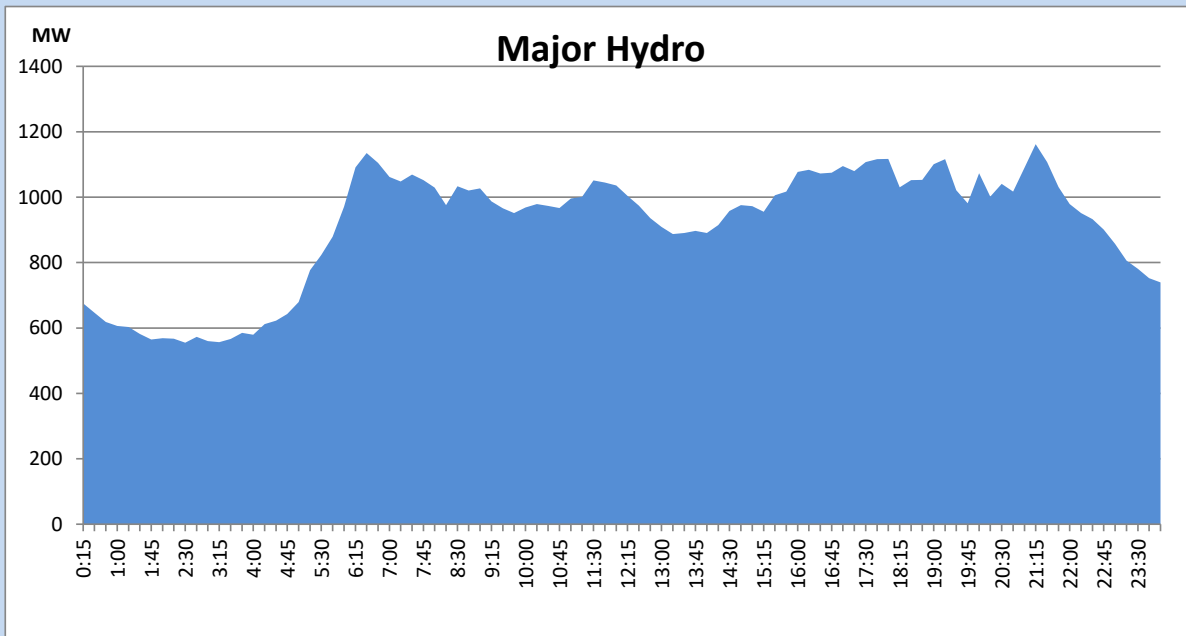
## IPP Oil Plant Generation during the Previous day

August 5, 2022



## Major Hydro Generation during the Previous day

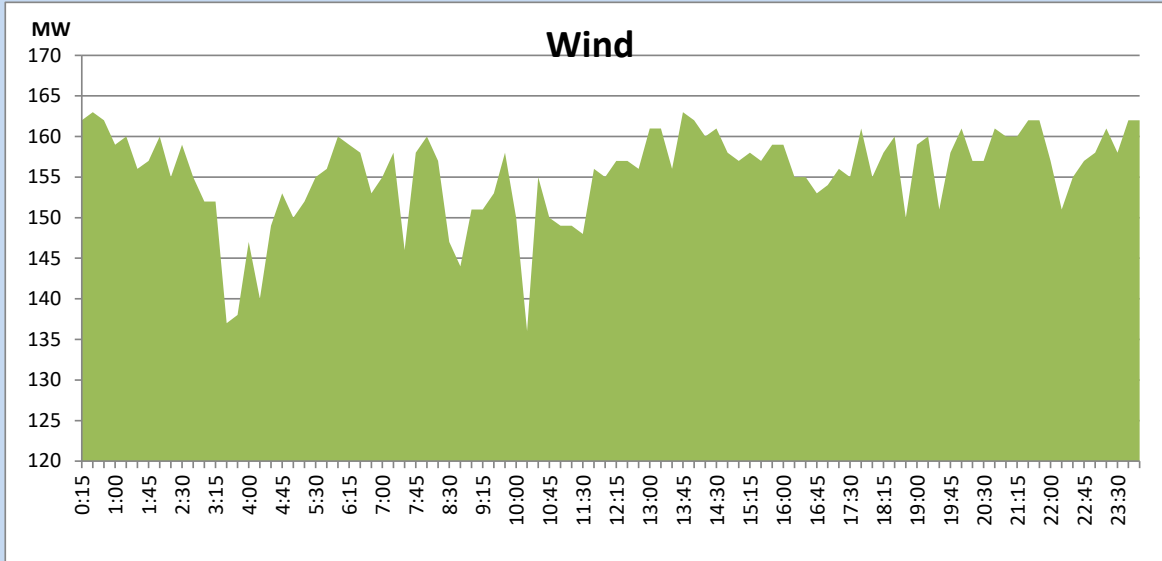
August 5, 2022



## Wind Generation during the Previous day

August 5, 2022

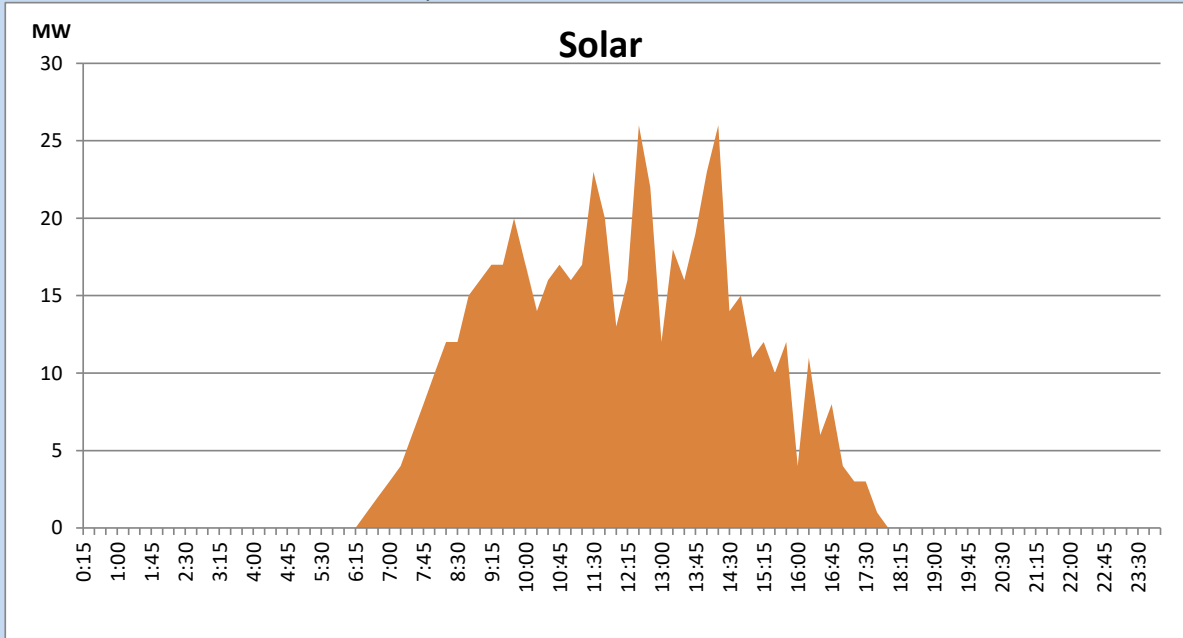
Based on Telemetered Power Stations only



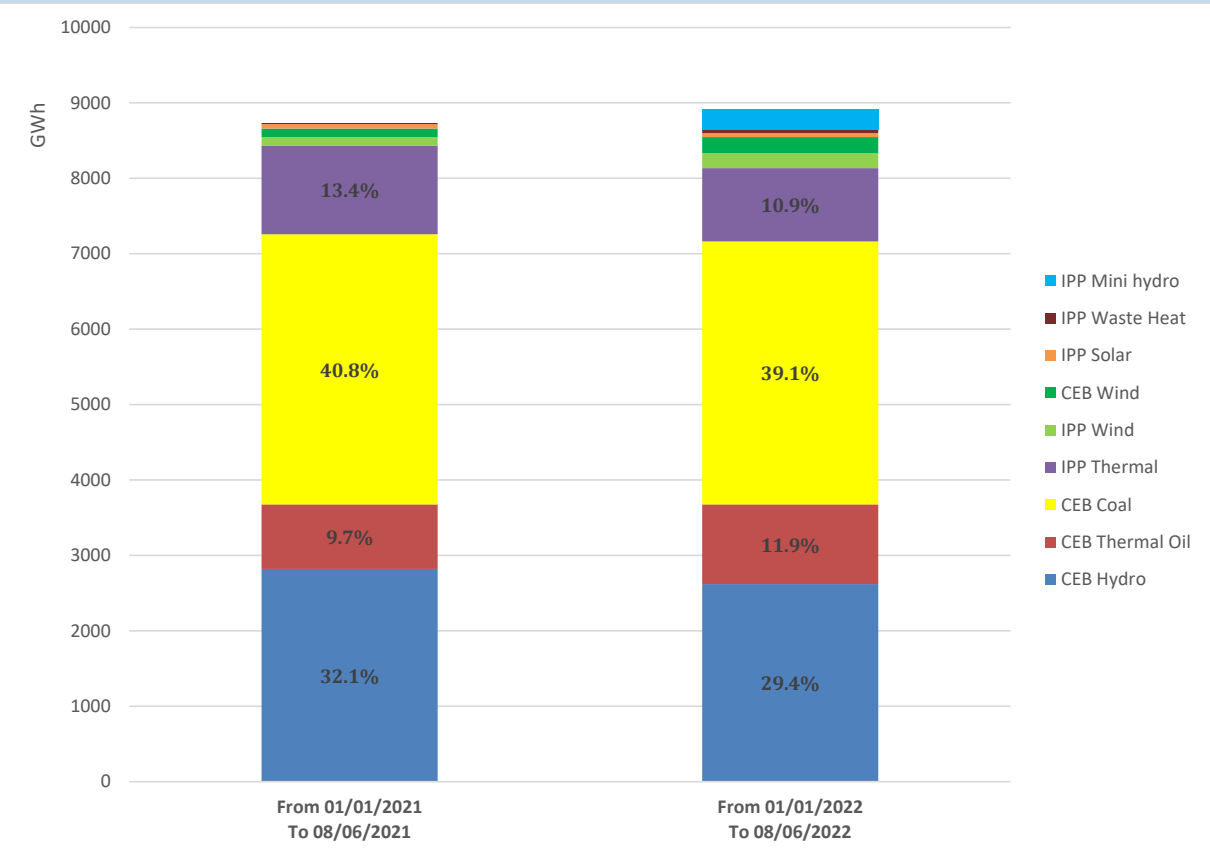
## Solar Generation during the Previous day

August 5, 2022

Based on Telemetered Power Stations only



# Cumulative Dispatch Comparison with Last Year



## Thermal Plant Fuel types

Power Station	Primary Fuel
CEB Thermal	
Sapugaskanda 1	Heavy Fuel
Sapugaskanda 2	Heavy Fuel
Kelanitissa Small Gas Turbines	Auto Diesel
GT 7 - Kelanitissa	Auto Diesel
Kelanitissa CCY	Naphtha or Diesel
Lakvijaya 1	Coal
Lakvijaya 2	Coal
Lakvijaya 3	Coal
Uthuru Janani	Heavy Fuel
Barge CEB	Heavy Fuel

Power Station	Primary Fuel
Private Thermal	
Sojitz - Kelanitissa	Auto Diesel
West Coast	Auto Diesel / Heavy Fuel
ACE Matara	Heavy Fuel
ACE Embilipitiya	Heavy Fuel

## Major Incidents during the day -as reported by CEB morning of

August 7, 2022

1) Kelaniya - Sapugaskanda cct 02 tripped from Sapugaskanda end and tripped and A/R from Kelaniya end at 22:17hrs due to the operation of distance protection. The cct was normalized at 22:21hrs.

2) Laxapana pond spilling stopped at 20:05hrs. Spilling started again at 21:15hrs and stopped at 00:00hrs (07/08/2022). Canyon pond spilling stopped at 16:35hrs. Spilling started at 20:08hrs and stopped at 22:40hrs. Spilling started again at 02:14hrs (07/08/2022) and continues to the present hour.

3) Kukule spilling stopped at 23:39hrs. Spilling started at 00:51hrs (07/08/2022) and stopped at 2:45hrs. Spilling started again at 3:30hrs and stopped at 5:45hrs.

4) Kotmale spilling stopped at 2:30hrs(07/08/2022). Spilling started at 6:30hrs and continues to the present hour.

5) Upper Kotmale and Norton spilling continues to the present hour.