

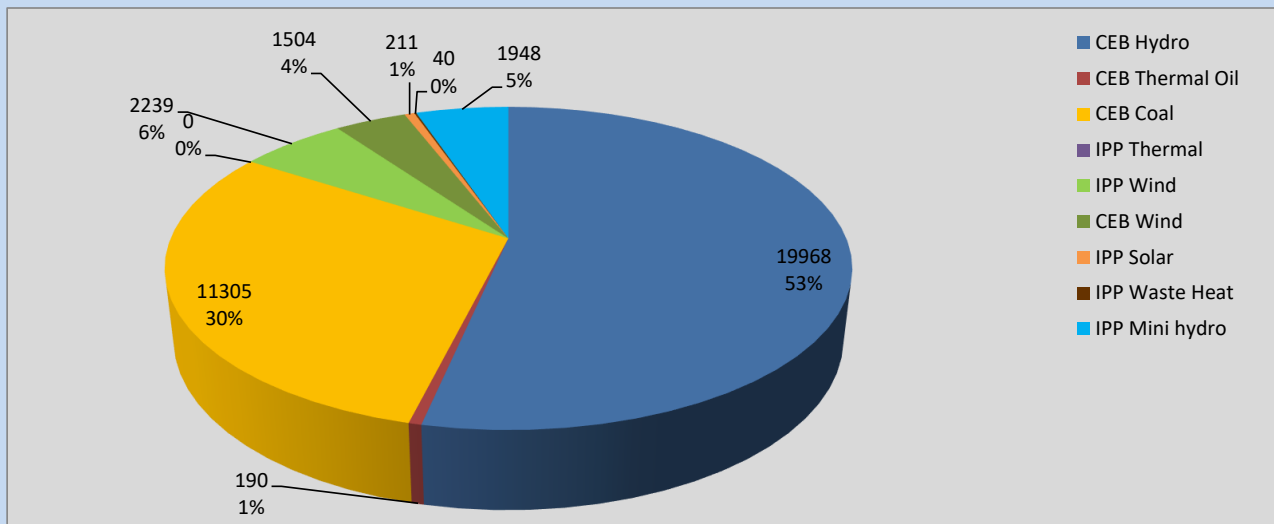
Generation and Reservoirs Statistics

August 3, 2022



PUBLIC UTILITIES COMMISSION OF SRI LANKA

Daily Generation Mix in MWh



Total Generation 37,405 MWh

Note: Above data is excluding contribution from Roof Top Solar, 1MW Solar and certain Mini Hydro plants

Cumulative Dispatch

Note: Following data is Excluding contribution from Roof Top Solar, 1MW solar and Mini Hydro plants

For Current Month

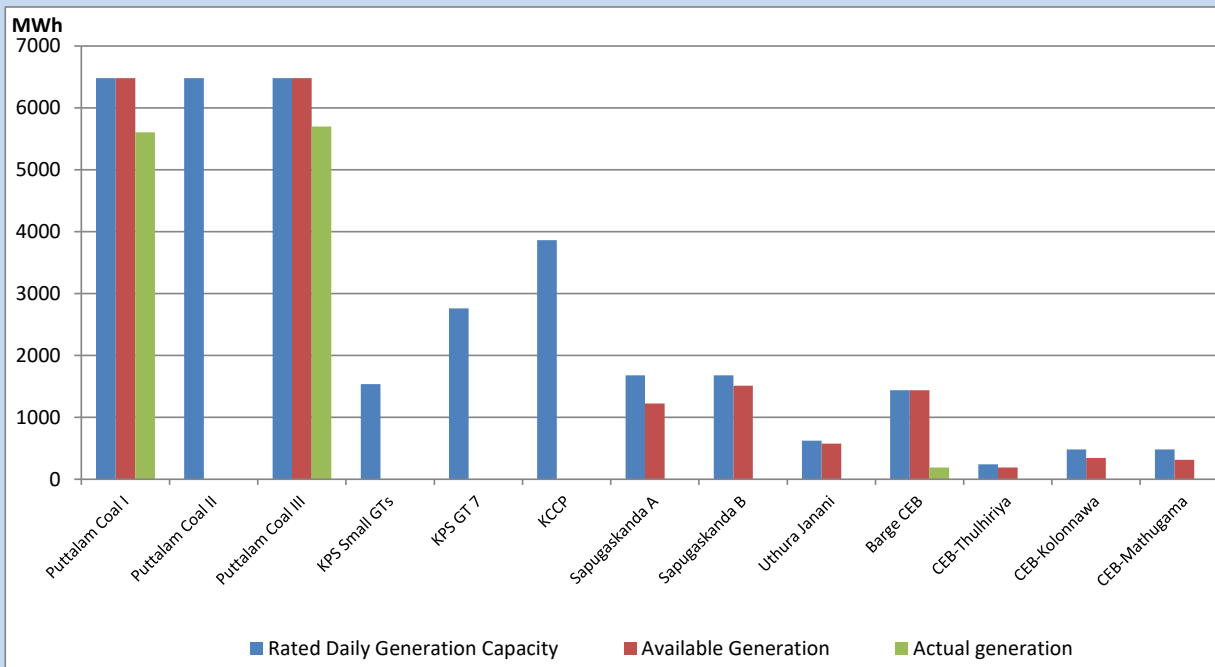
Category	Dispatch (GWh)	Percentage
CEB Hydro	56.38	50.42%
CEB Thermal Oil	3.66	3.27%
CEB Coal	35.27	31.54%
IPP Thermal	0.00	0.00%
SPP Wind	6.50	5.81%
CEB Wind	4.27	3.82%
SPP Solar	0.53	0.47%
SPP Solid Waste	0.04	0.04%
Mini Hydro	5.16	4.61%
Total	111.81	

For Current Year

Category	Dispatch (GWh)	Percentage
CEB Hydro	2,554.5	29.02%
CEB Thermal Oil	1,059.0	12.03%
CEB Coal	3,454.9	39.25%
IPP Thermal	972.4	11.05%
SPP Wind	190.5	2.16%
CEB Wind	205.5	2.34%
SPP Solar	54.5	0.62%
SPP Solid Waste	44.1	0.50%
Mini Hydro	266.2	3.02%
Total	8,801.4	

CEB owned Thermal Plant Dispatch

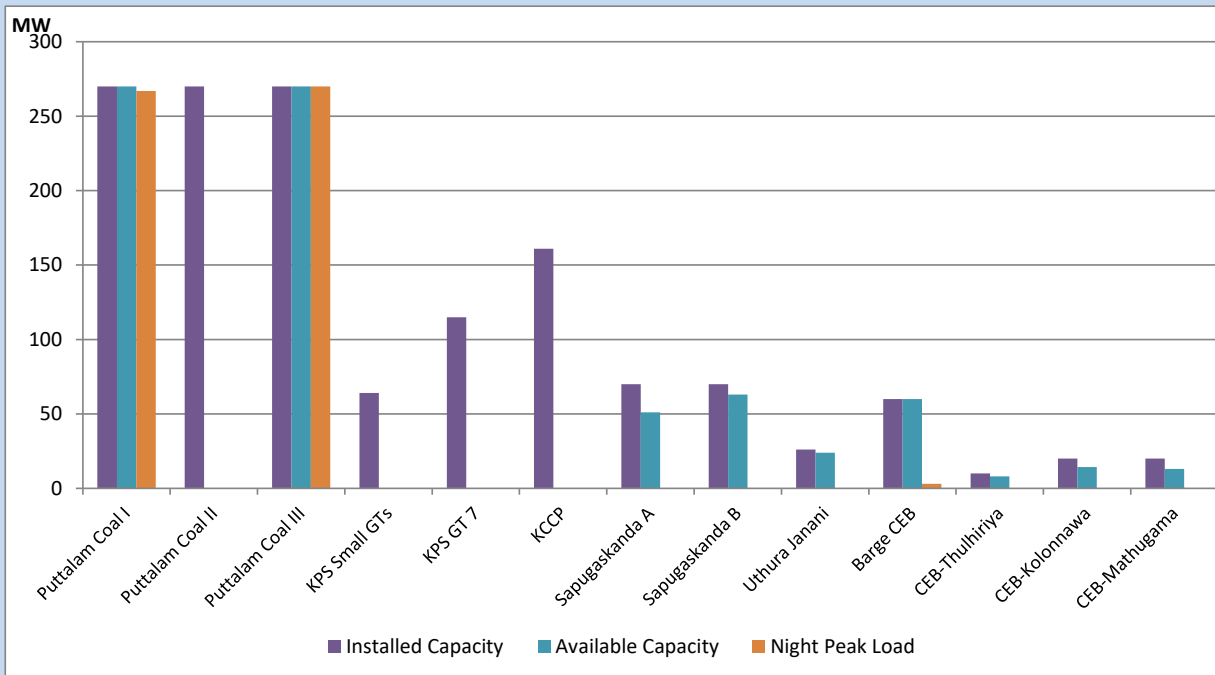
August 3, 2022



Available Generation is estimated based on plant availability at 6.00am on

August 4, 2022

CEB owned Thermal Plant Loading at the Night Peak



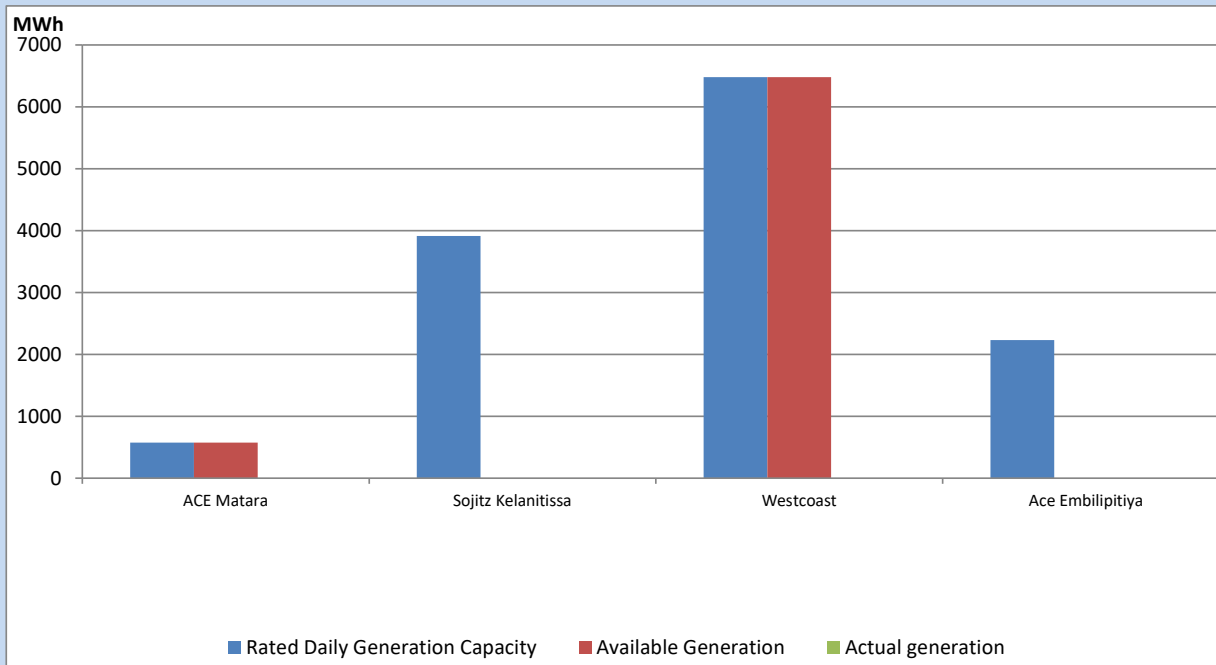
Note- Plant availability is recorded at 6.00 am on

August 4, 2022

IPP owned Thermal Plant Dispatch

August 3, 2022

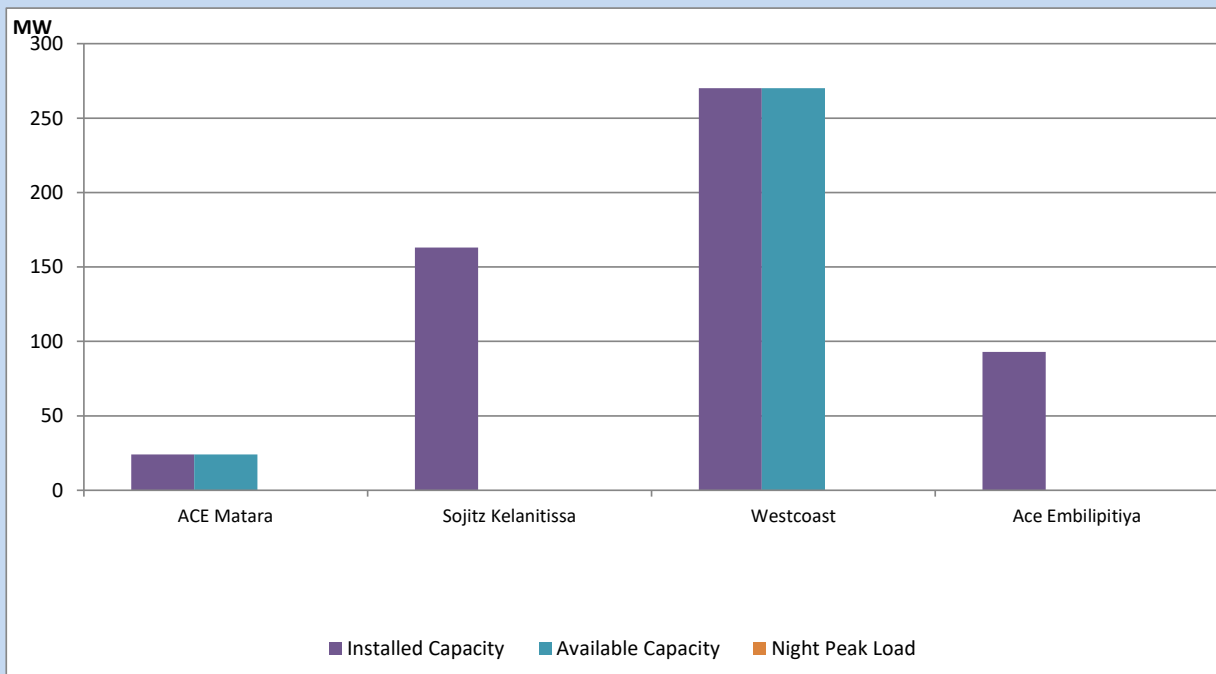
Asia Power, V Power Pallekale, Vpower Galle, V Power Horana, Vpower Hambantota, Vpower Valachchena and Altaqa Mahiyanganaya are not available due to expiration of PPAs



Available Generation is estimated based on plant availability at 6.00am on

August 4, 2022

IPP owned Thermal Plant Loading at the Night Peak

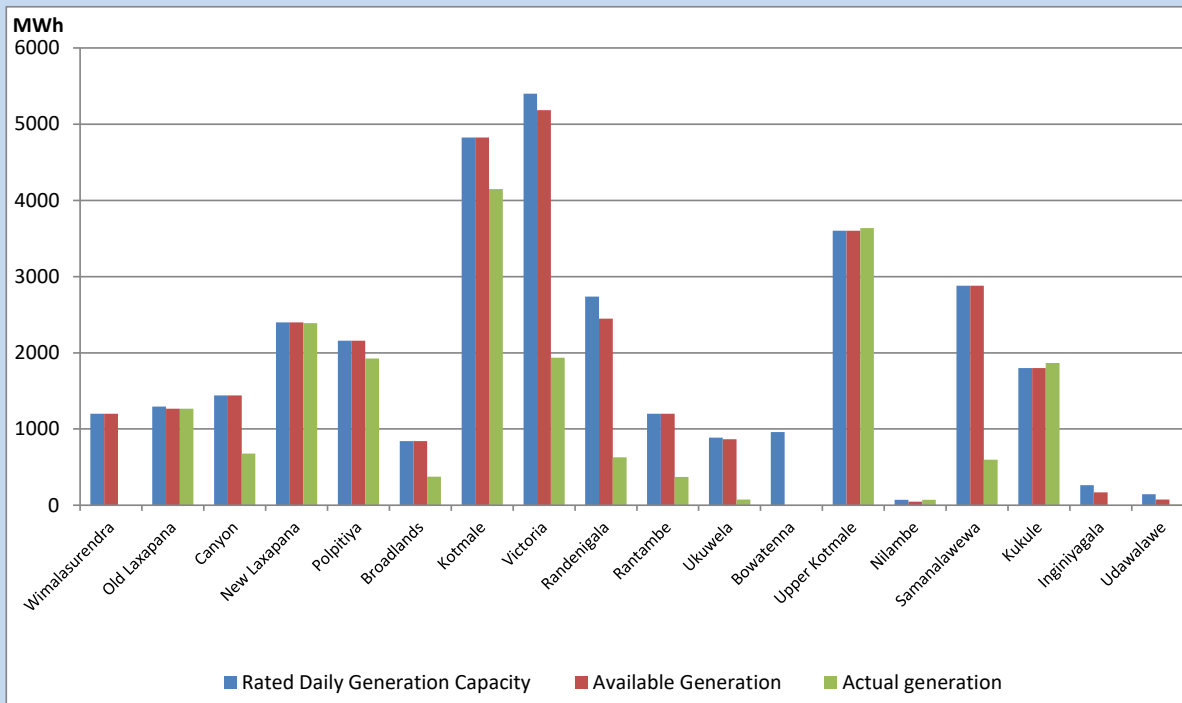


Note- Plant availability is recorded at 6.00 am on

August 4, 2022

Major Hydro Plant Dispatch

August 3, 2022

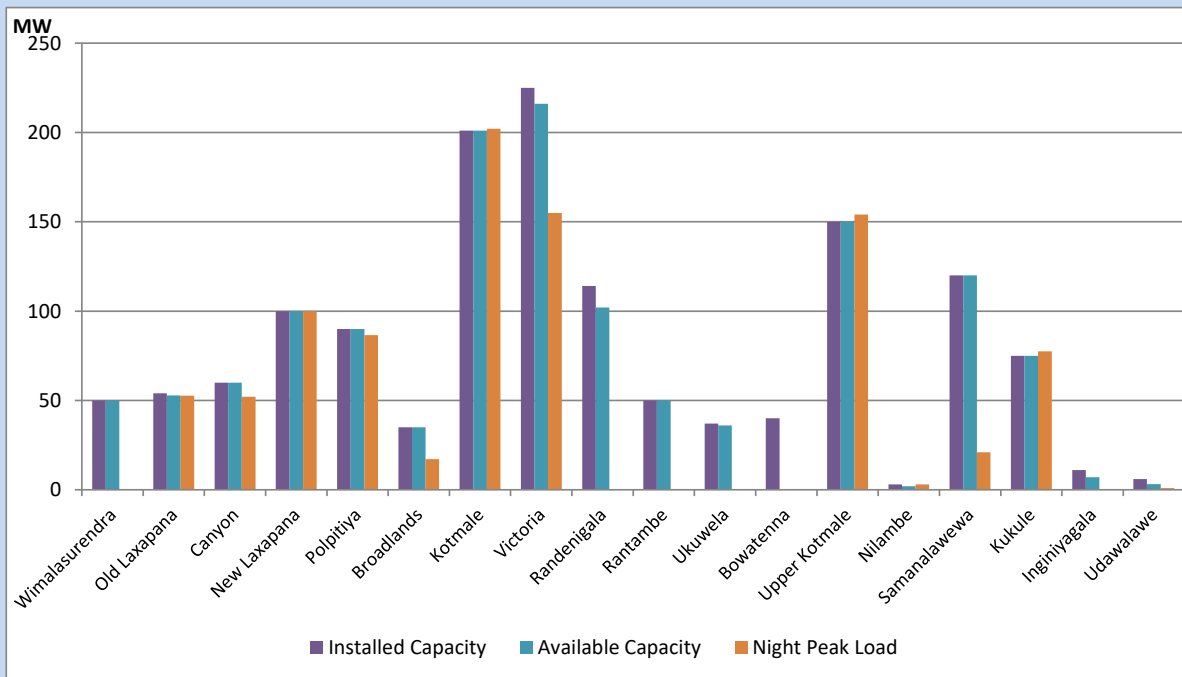


Available Generation is estimated based on plant availability at 6.00am on August 4, 2022
 Broadlands power plant is operating in the Commissioning Stage

August 4, 2022

Major Hydro Plant Loading at Night Peak

August 3, 2022



Note- Plant availability is recorded at 6.00 am on August 4, 2022
 Broadlands power plant is operating in the Commissioning Stage

Summary of Major Plant performance

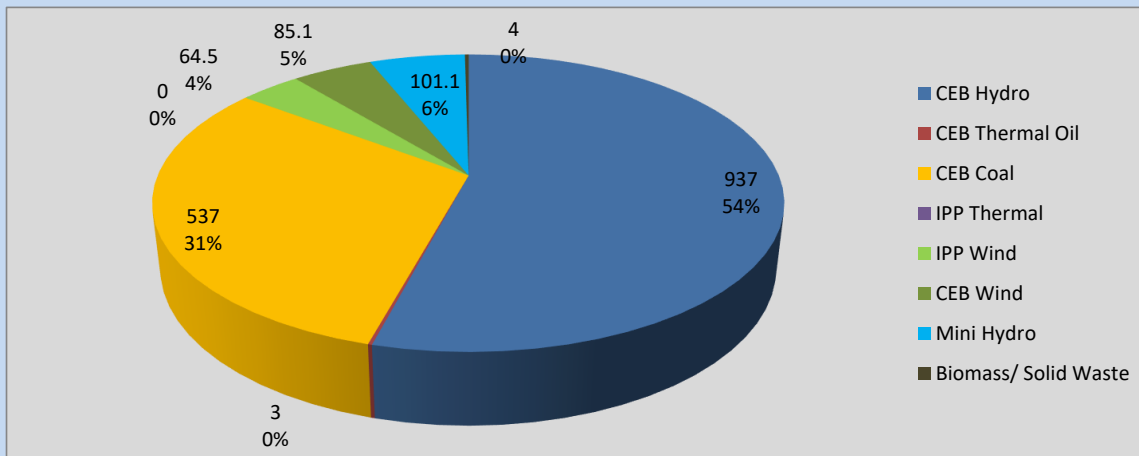
Plant	Installed Capacity	Plant Availability	Night peak Load	Plant Dispatch
	(MW)	(MW)	(MW)	(MWh)
Wimalasurendra	50	50	0	0
Old Laxapana	54	53	53	1,265
Canyon	60	60	52	677
New Laxapana	100	100	100	2,389
Polpitiya	90	90	87	1,924
Broadlands	35	35	17	374
Kotmale	201	201	202	4,150
Victoria	225	216	155	1,936
Randenigala	114	102	0	630
Rantambe	50	50	0	370
Ukuwela	37	36	0	73
Bowatenna	40	0	0	0
Upper Kotmale	150	150	154	3,638
Nilambe	3	2	3	71
Samanalawewa	120	120	21	597
Kukule	75	75	78	1,866
Inginiyagala	11	7	0	0
Udawalawe	6	3	1	8
Puttalam Coal I	270	270	267	5,604
Puttalam Coal II	270	0	0	0
Puttalam Coal III	270	270	270	5,701
KPS Small GTs	64	0	0	0
KPS GT 7	115	0	0	0
KCCP	161	0	0	0
Sapugaskanda A	70	51	0	0
Sapugaskanda B	70	63	0	0
Uthura Janani	26	24	0	0
Barge CEB	60	60	3	190
CEB-Thulhiriya	10	8	0	0
CEB-Kolonnawa	20	14	0	0
CEB-Mathugama	20	13	0	0
ACE Matara	24	24	0	0
Sojitz Kelanitissa	163	0	0	0
West Coast	270	270	0	0
ACE Embilipitiya	93	0	0	0
Total	3,397	2,417	1,717	37,405

Plant availability is the availability recorded at 6 am on

August 4, 2022

Contribution to the Night Peak in MW

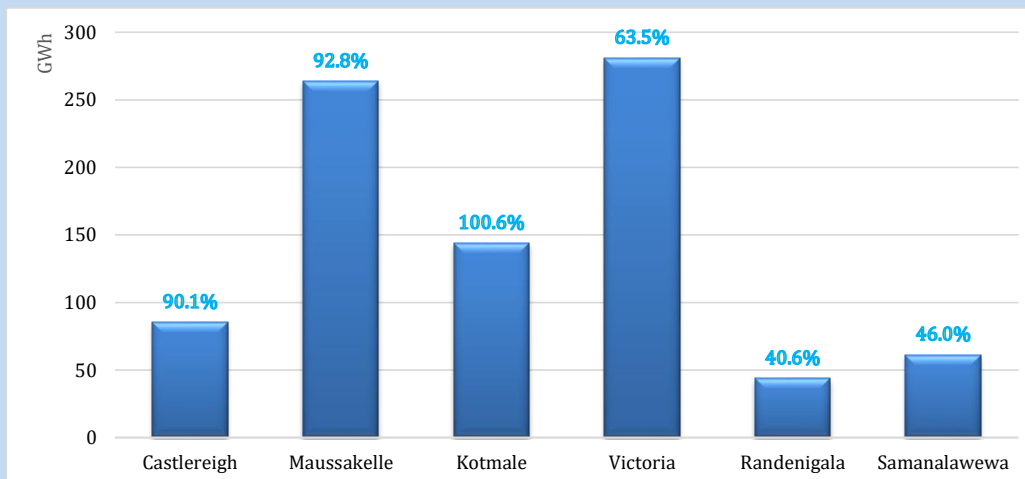
August 3, 2022



Night Peak*	1,731.6 MW
Day Peak	1,877.4 MW
Minimum Demand	1,088.4 MW

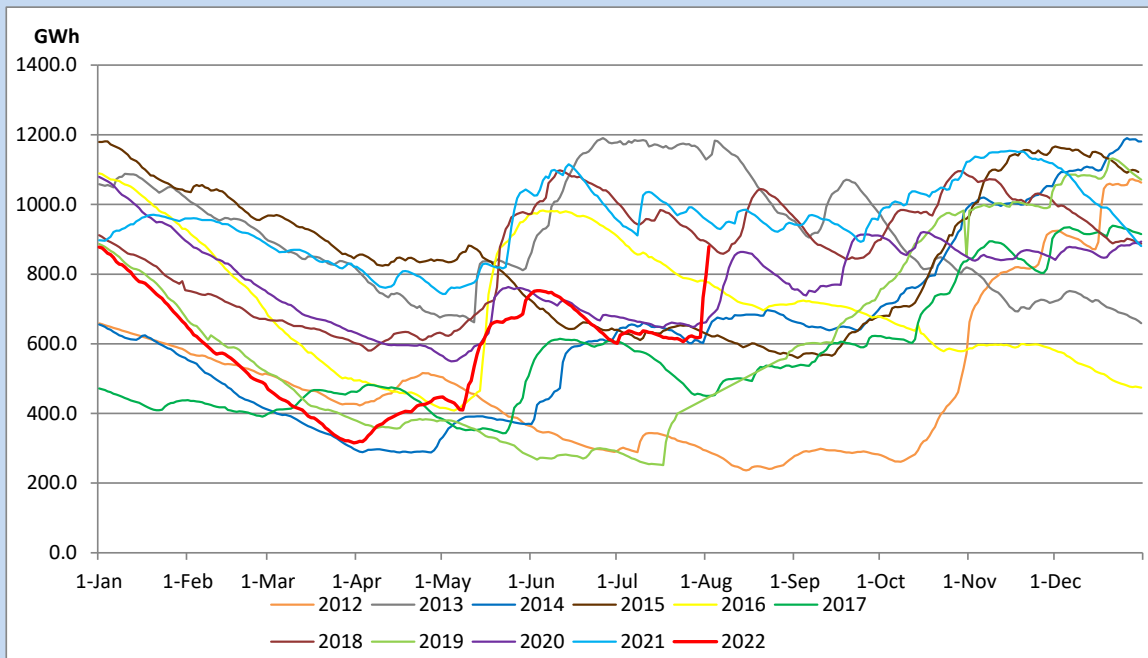
Above figures are excluding contribution from Roof Top Solar, 1MW solar, certain Wind plants and Mini Hydro plants

Reservoir Levels - as at 06.00 Hr on August 4, 2022

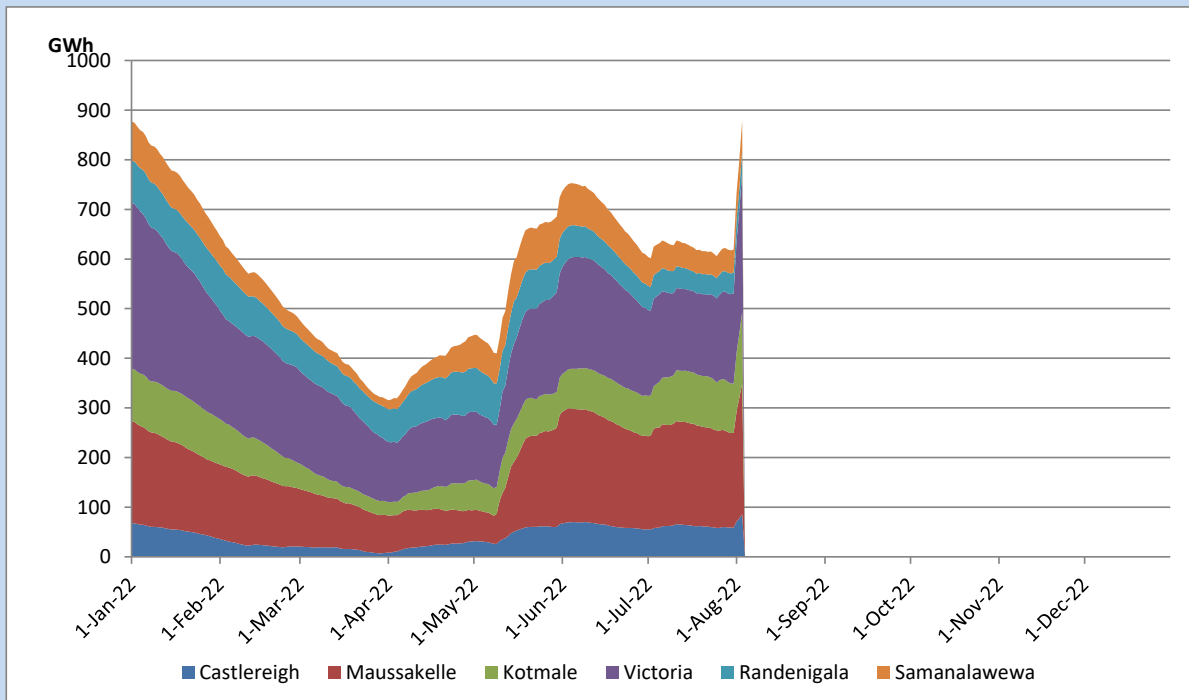


Total Reservoir Level	878.8 GWh
% of Total capacity	72.9%

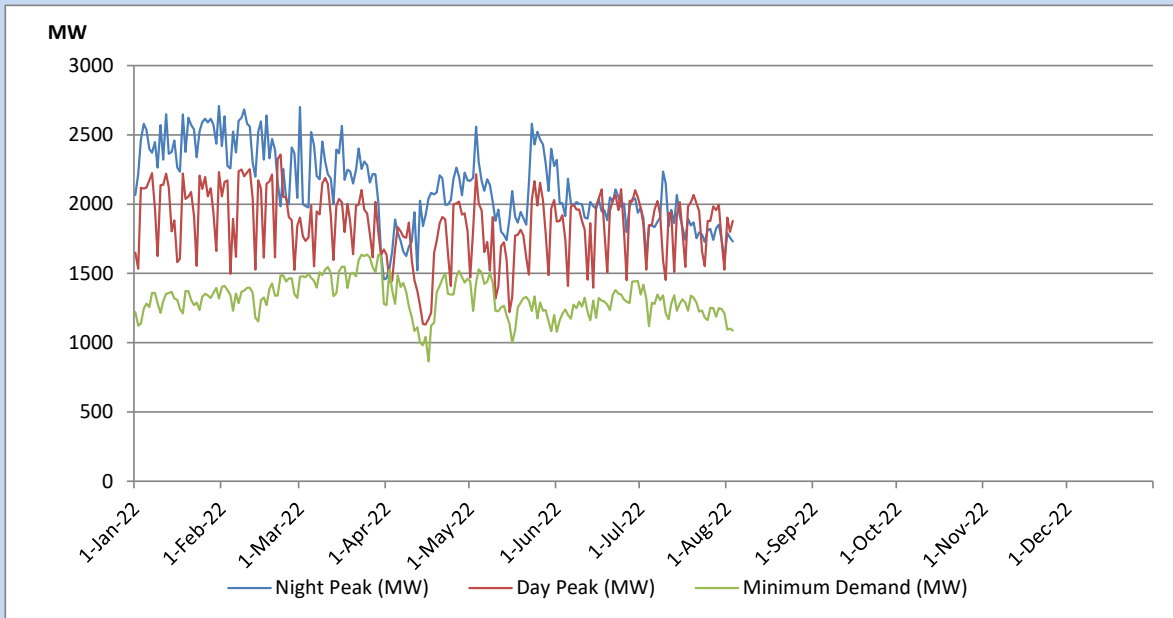
Comparison of Total Reservoir Storage Levels with Past Years



Variation of Major Hydro Reservoir Levels in the current year (GWh)



Variation of Demand during the current year

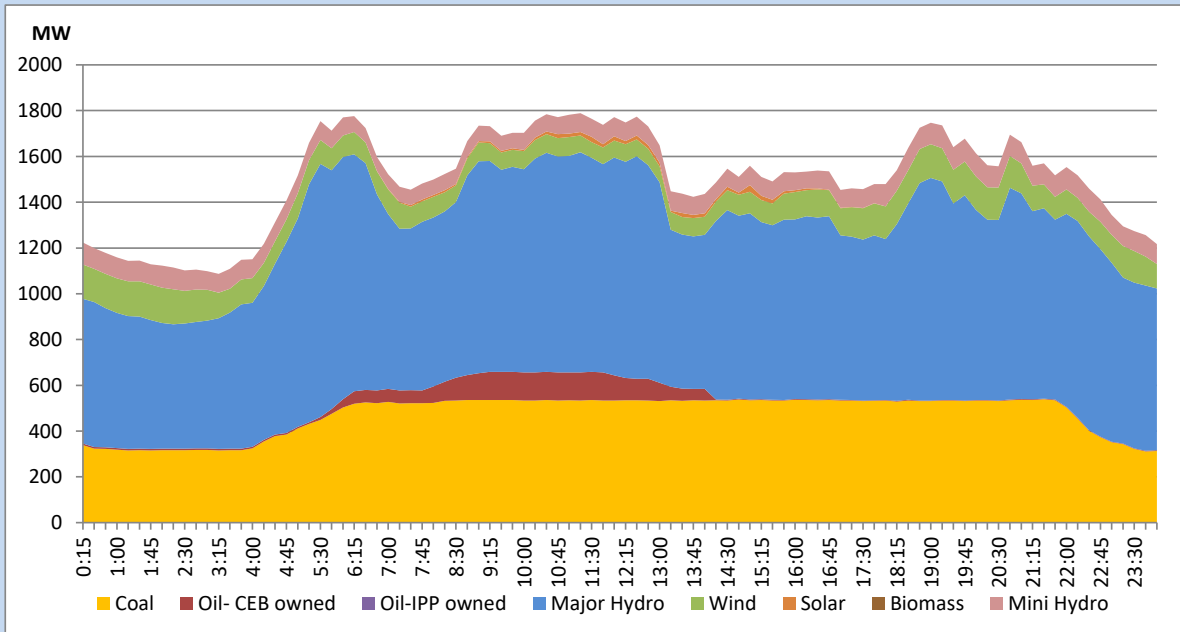


The above figures are excluding contribution from Roof Top Solar, 1MW solar, certain Wind plants and Mini Hydro plants

Daily Load Curve of the Previous day

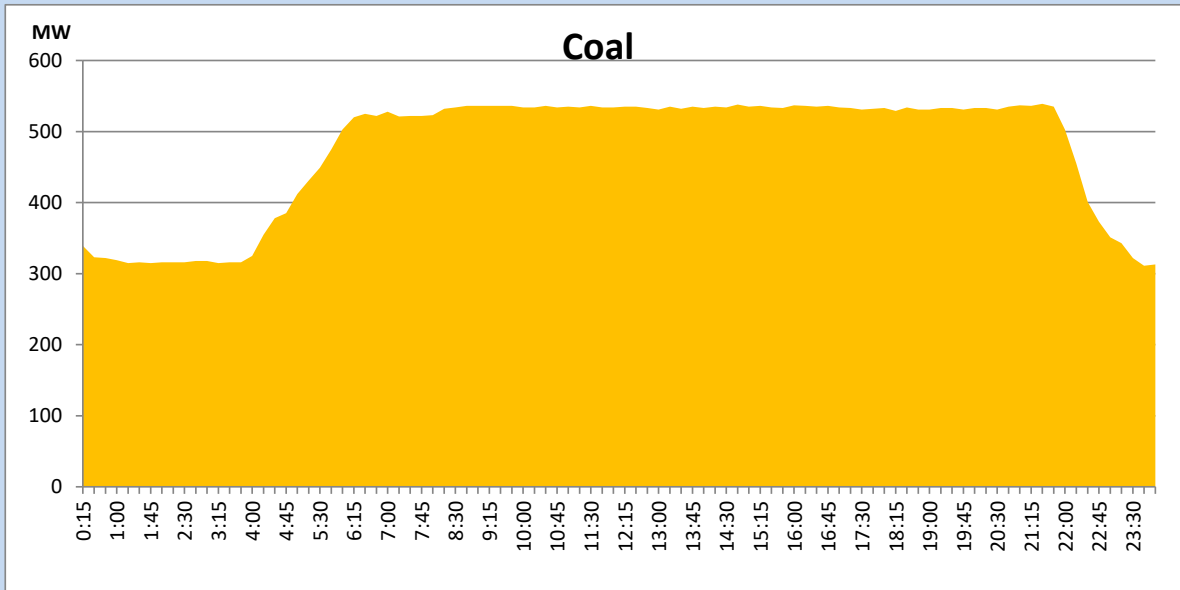
August 2, 2022

Solar and wind data is based on Telemetered Power Stations only



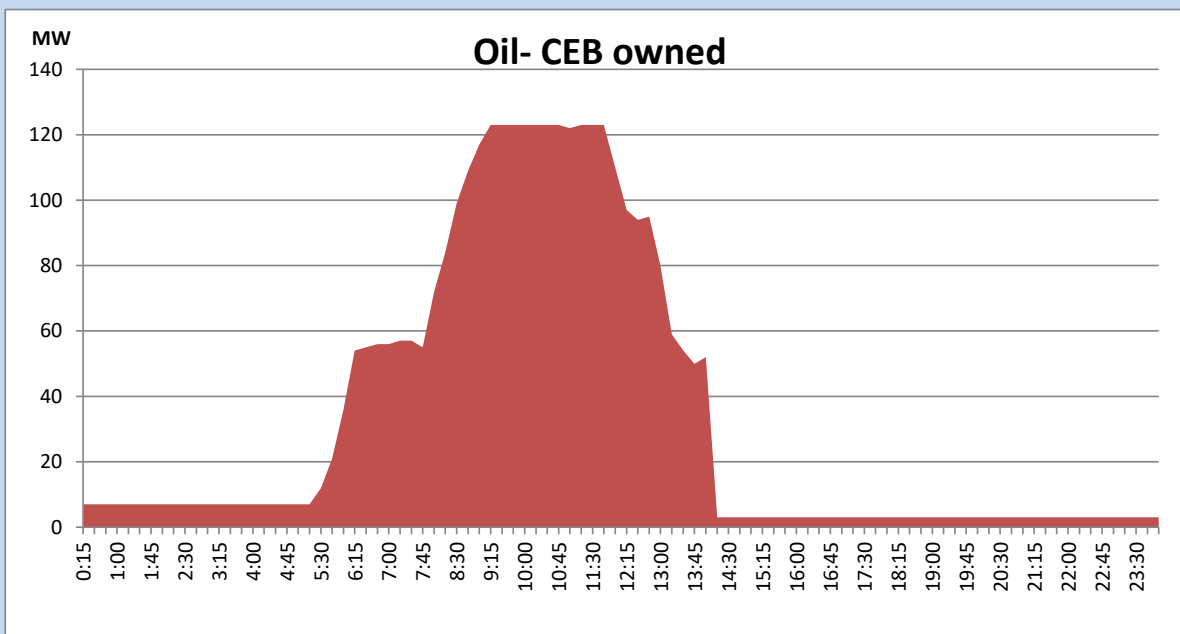
Coal Generation during the Previous day

August 2, 2022



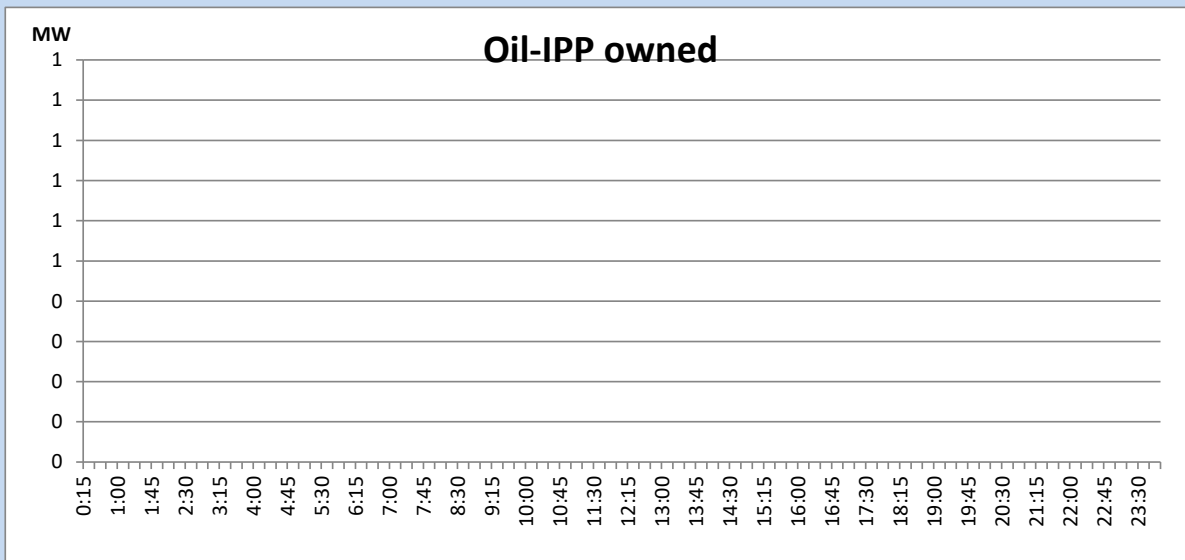
CEB Oil Plant Generation during the Previous day

August 2, 2022



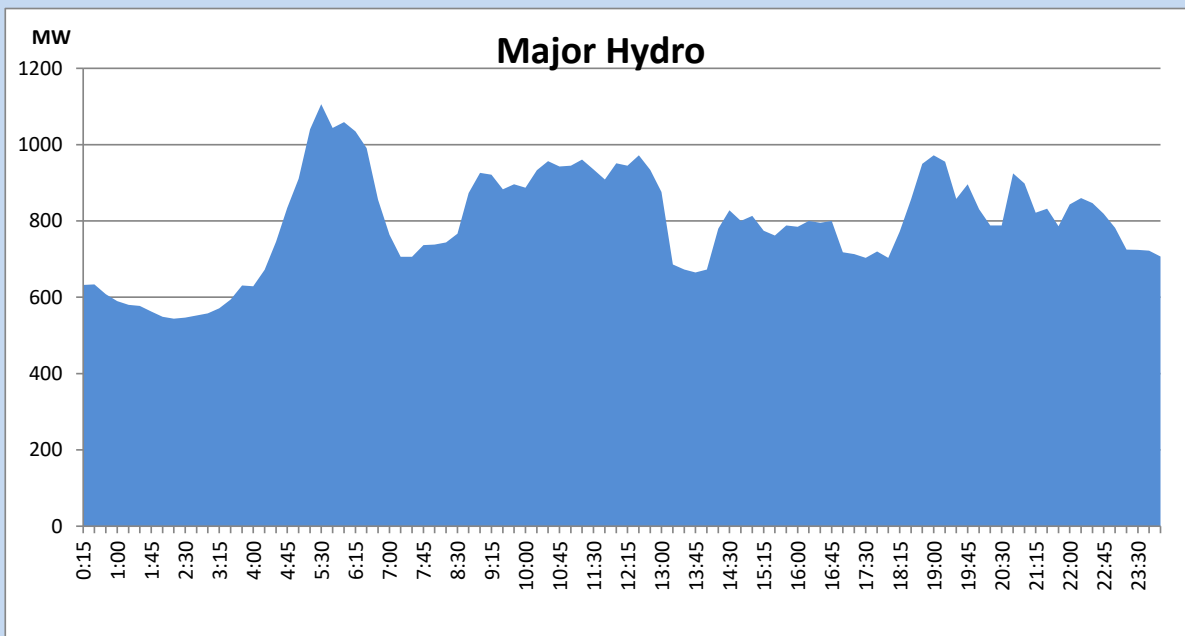
IPP Oil Plant Generation during the Previous day

August 2, 2022



Major Hydro Generation during the Previous day

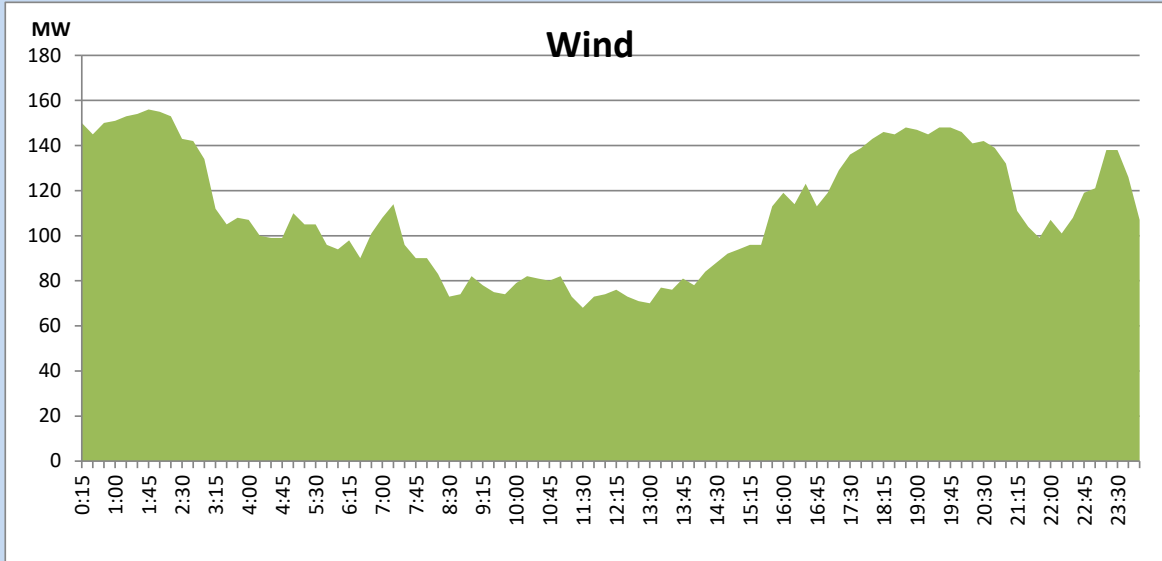
August 2, 2022



Wind Generation during the Previous day

August 2, 2022

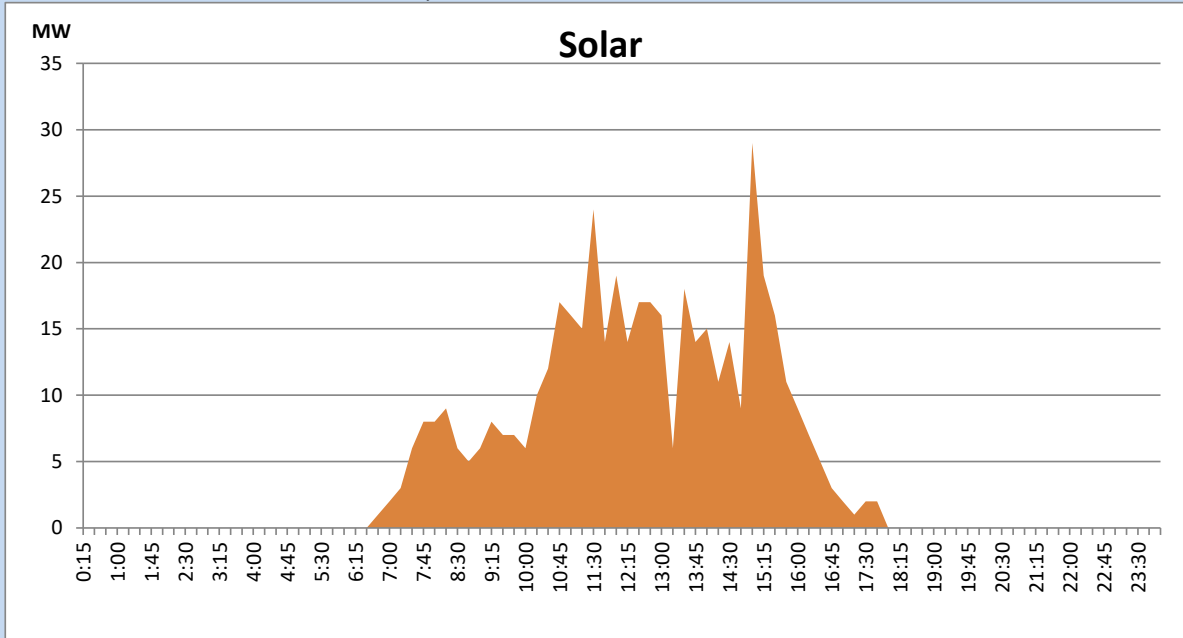
Based on Telemetered Power Stations only



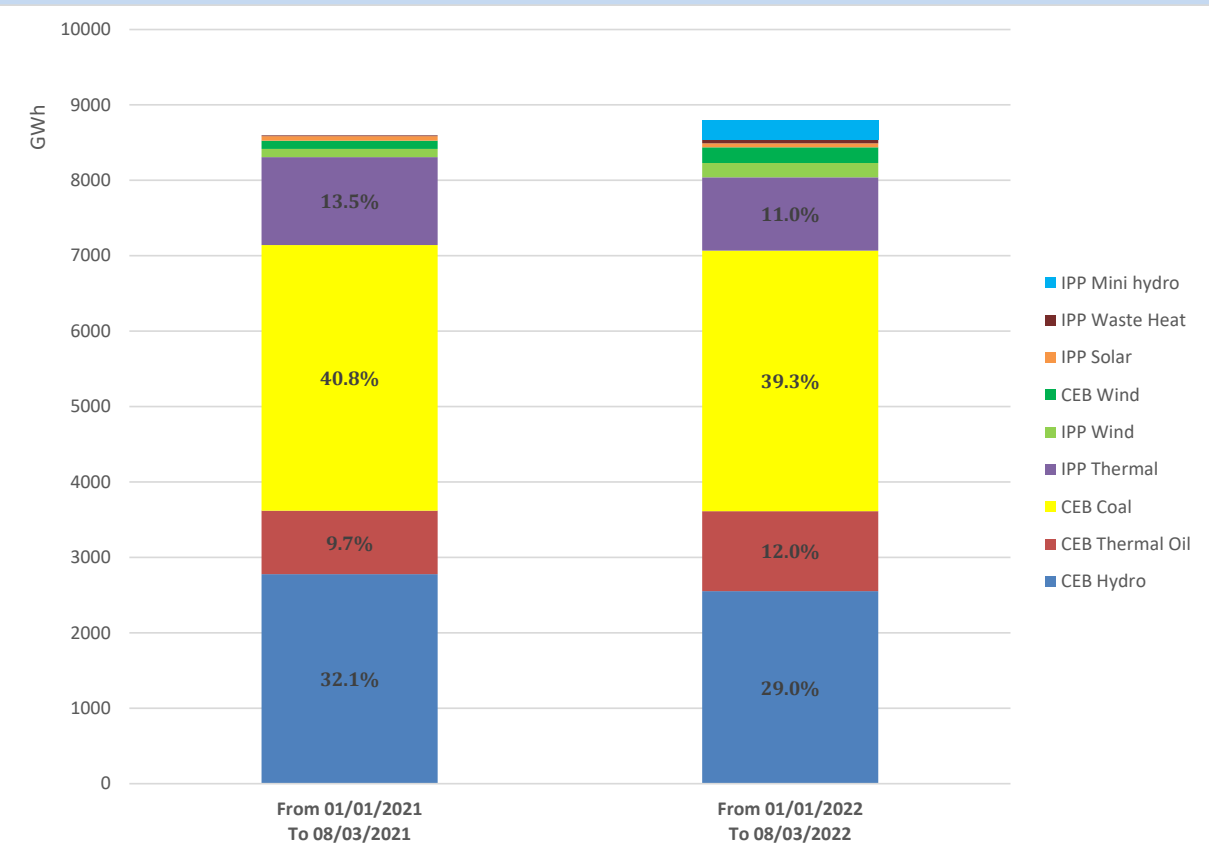
Solar Generation during the Previous day

August 2, 2022

Based on Telemetered Power Stations only



Cumulative Dispatch Comparison with Last Year



Thermal Plant Fuel types

Power Station	Primary Fuel
CEB Thermal	
Sapugaskanda 1	Heavy Fuel
Sapugaskanda 2	Heavy Fuel
Kelanitissa Small Gas Turbines	Auto Diesel
GT 7 - Kelanitissa	Auto Diesel
Kelanitissa CCY	Naphtha or Diesel
Lakvijaya 1	Coal
Lakvijaya 2	Coal
Lakvijaya 3	Coal
Uthuru Janani	Heavy Fuel
Barge CEB	Heavy Fuel

Power Station	Primary Fuel
Private Thermal	
Sojitz - Kelanitissa	Auto Diesel
West Coast	Auto Diesel / Heavy Fuel
ACE Matara	Heavy Fuel
ACE Embilipitiya	Heavy Fuel

Major Incidents during the day -as reported by CEB morning of

August 4, 2022

- 1) Rotational manual load shedding was carried out from 5:30 hrs to 8:30 hrs and 13:00 hrs to 22:00 hrs.
- 2) Kotmale spilling started at 22:30hrs and continues to the present hour.
- 3) Canyon Pond spilling stopped at 07:54hrs and started again at 9:35hrs and continues to the present hour.
- 4) Upper Kotmale, Kukule, Norton and Laxapana spilling continues to the present hour.
- 5) Polpitiya unit 02 performed a force shutdown at 13:45hrs due to cooling water block. Polpitiya unit 02 resumed generation at 14:50hrs.