

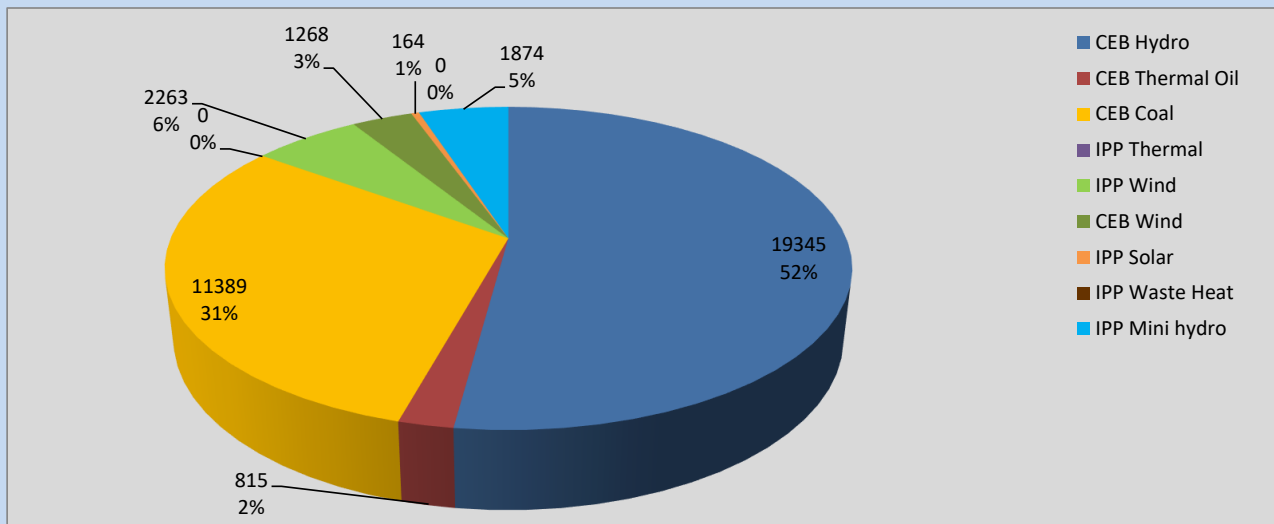
# Generation and Reservoirs Statistics

August 2, 2022



PUBLIC UTILITIES COMMISSION OF SRI LANKA

## Daily Generation Mix in MWh



**Total Generation** **37,118 MWh**

Note: Above data is excluding contribution from Roof Top Solar, 1MW Solar and certain Mini Hydro plants

## Cumulative Dispatch

Note: Following data is Excluding contribution from Roof Top Solar, 1MW solar and Mini Hydro plants

### For Current Month

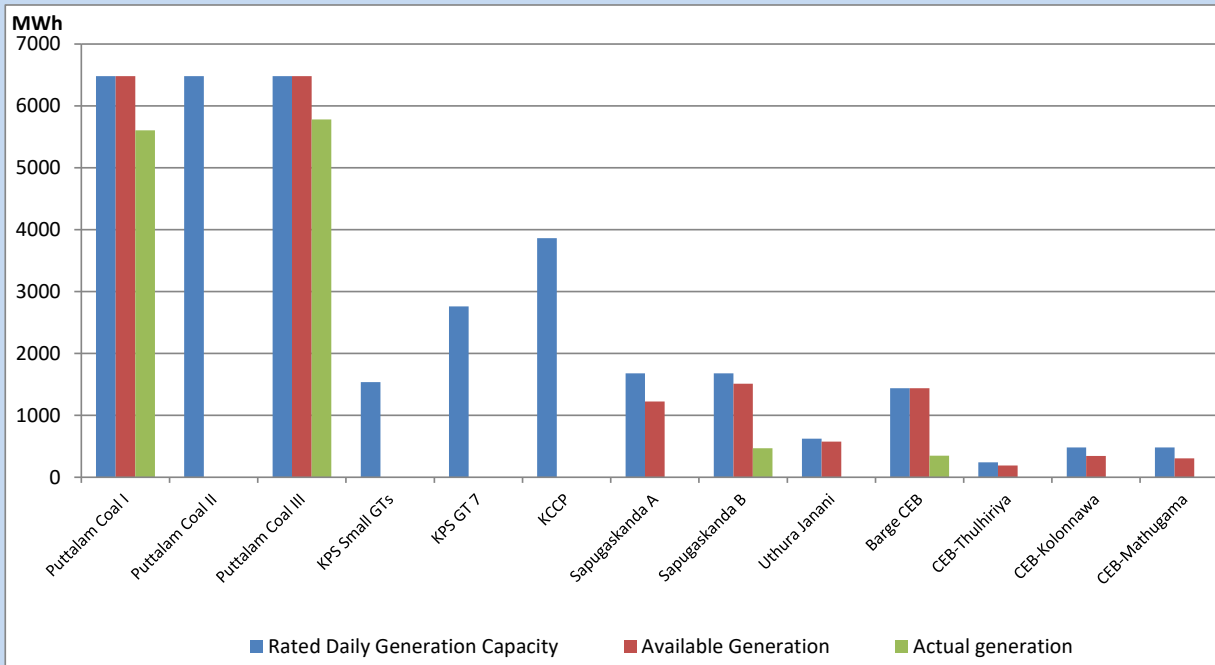
| Category        | Dispatch (GWh) |        |
|-----------------|----------------|--------|
| CEB Hydro       | 36.41          | 48.94% |
| CEB Thermal Oil | 3.47           | 4.66%  |
| CEB Coal        | 23.96          | 32.20% |
| IPP Thermal     | 0.00           | 0.00%  |
| SPP Wind        | 4.26           | 5.73%  |
| CEB Wind        | 2.77           | 3.72%  |
| SPP Solar       | 0.32           | 0.43%  |
| SPP Solid Waste | 0.00           | 0.00%  |
| Mini Hydro      | 3.21           | 4.31%  |
| <b>Total</b>    | <b>74.40</b>   |        |

### For Current Year

| Category        | Dispatch (GWh) |        |
|-----------------|----------------|--------|
| CEB Hydro       | 2,534.6        | 28.92% |
| CEB Thermal Oil | 1,058.8        | 12.08% |
| CEB Coal        | 3,443.6        | 39.29% |
| IPP Thermal     | 972.4          | 11.10% |
| SPP Wind        | 188.2          | 2.15%  |
| CEB Wind        | 204.0          | 2.33%  |
| SPP Solar       | 54.3           | 0.62%  |
| SPP Solid Waste | 44.1           | 0.50%  |
| Mini Hydro      | 264.2          | 3.01%  |
| <b>Total</b>    | <b>8,764.0</b> |        |

## CEB owned Thermal Plant Dispatch

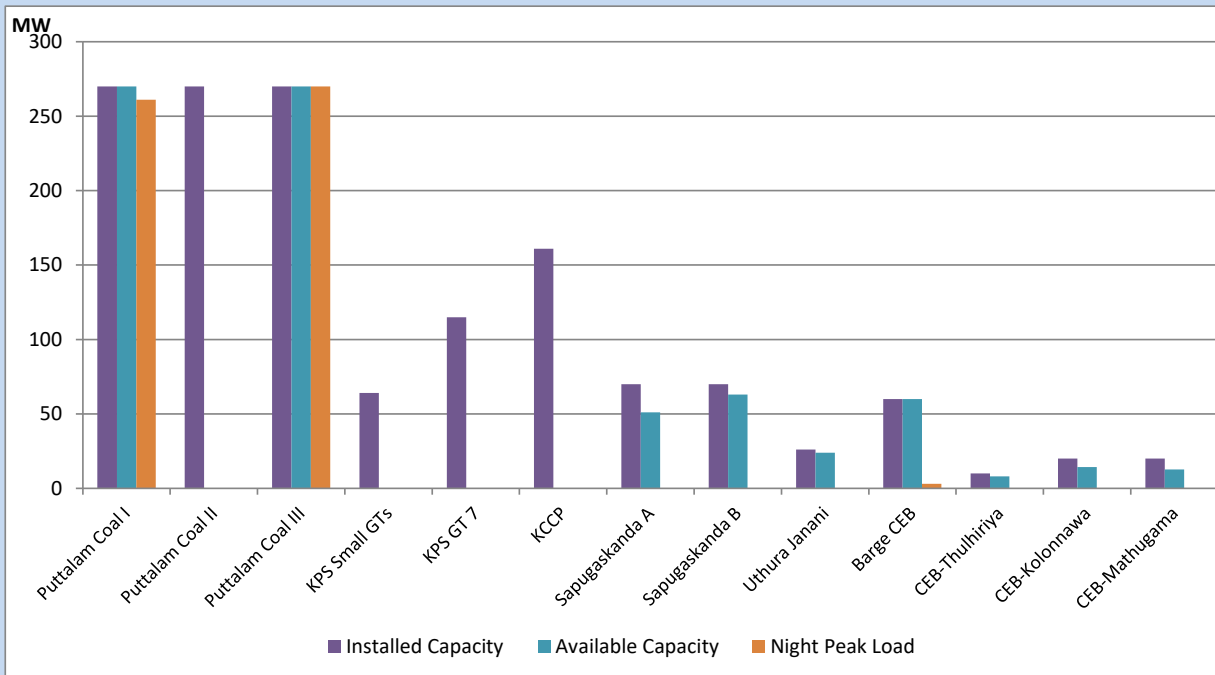
August 2, 2022



Available Generation is estimated based on plant availability at 6.00am on

August 3, 2022

## CEB owned Thermal Plant Loading at the Night Peak



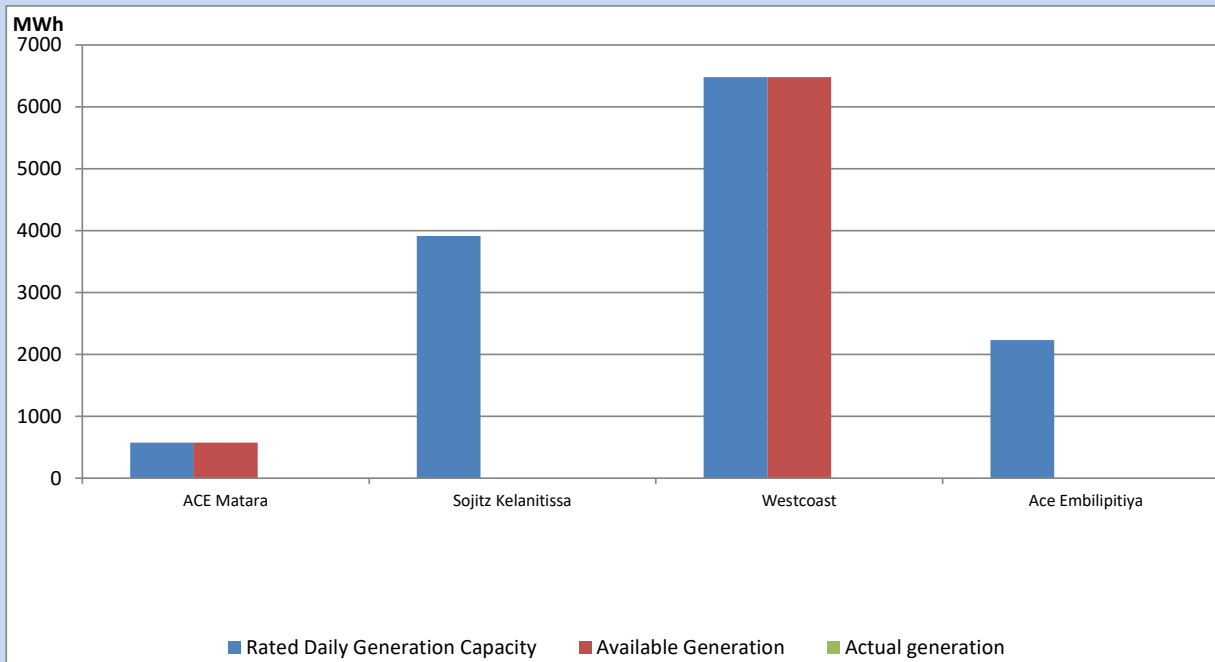
Note- Plant availability is recorded at 6.00 am on

August 3, 2022

## IPP owned Thermal Plant Dispatch

August 2, 2022

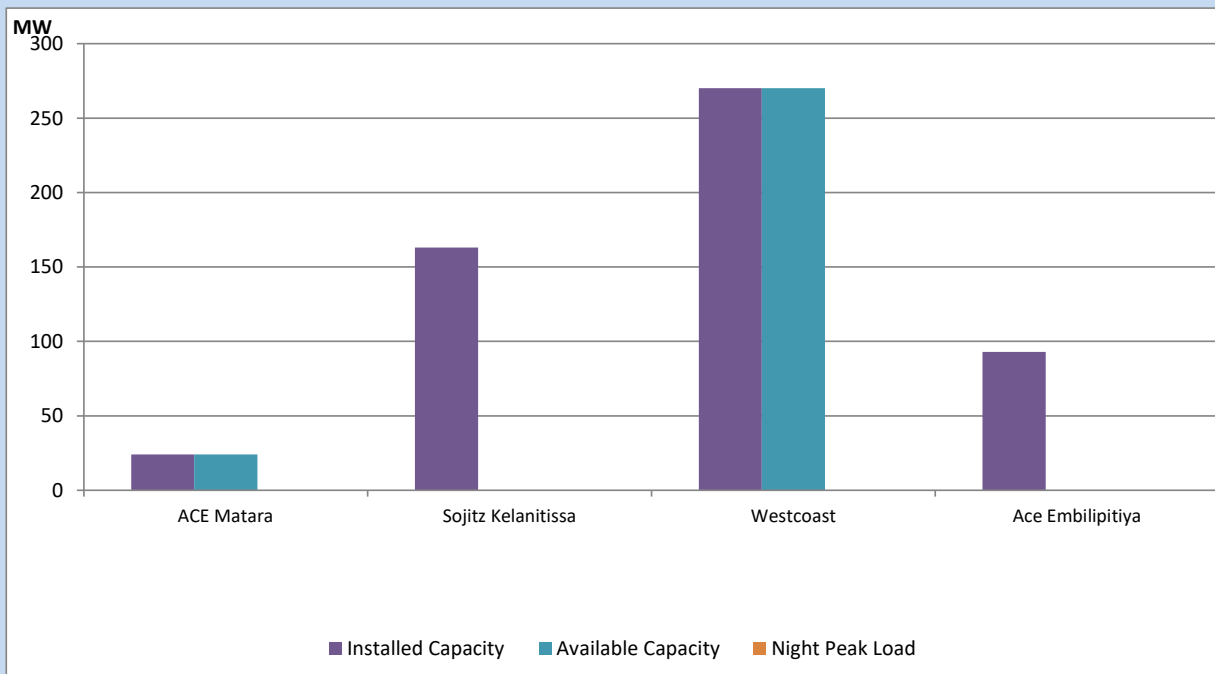
Asia Power, V Power Pallekale, Vpower Galle, V Power Horana, Vpower Hambantota, Vpower Valachchena and Altaqa Mahiyanganaya are not available due to expiration of PPAs



Available Generation is estimated based on plant availability at 6.00am on

August 3, 2022

## IPP owned Thermal Plant Loading at the Night Peak

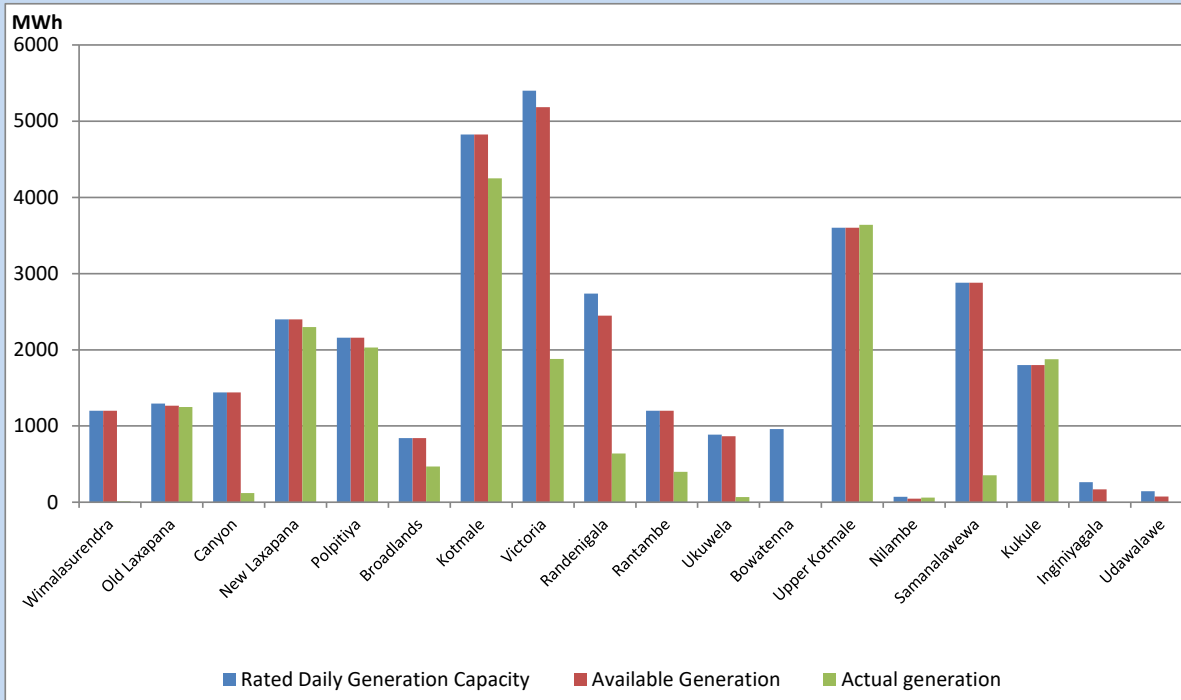


Note- Plant availability is recorded at 6.00 am on

August 3, 2022

## Major Hydro Plant Dispatch

August 2, 2022

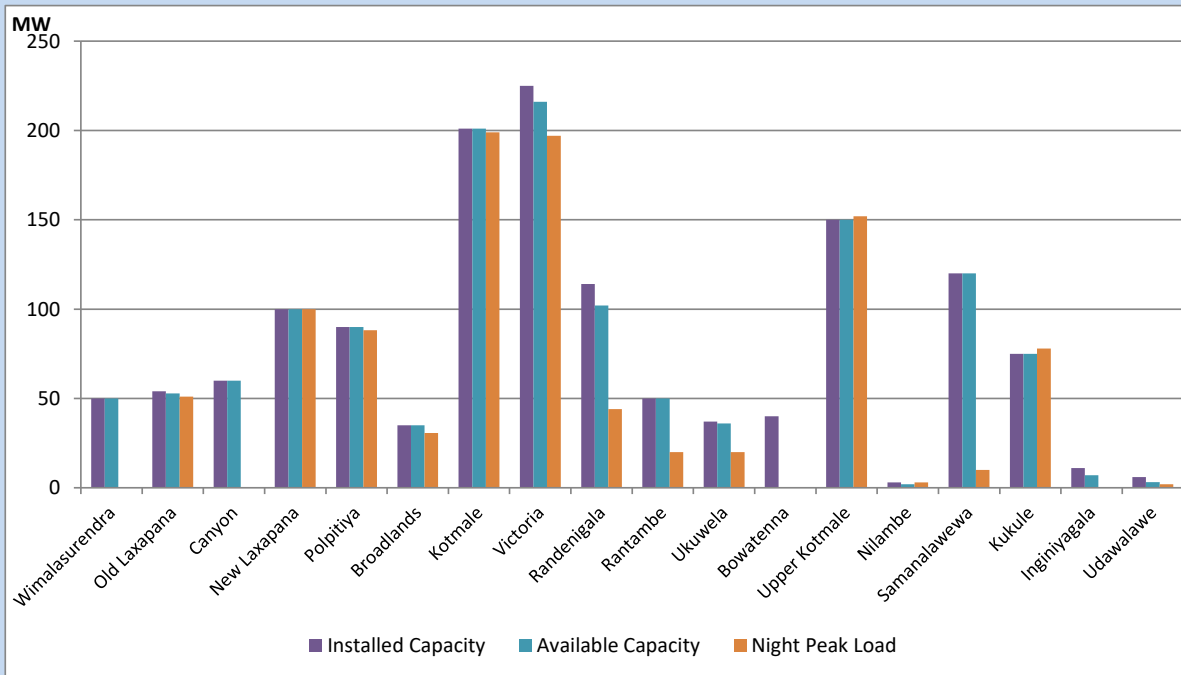


Available Generation is estimated based on plant availability at 6.00am on August 3, 2022  
 Broadlands power plant is operating in the Commissioning Stage

August 3, 2022

## Major Hydro Plant Loading at Night Peak

August 2, 2022



Note- Plant availability is recorded at 6.00 am on August 3, 2022  
 Broadlands power plant is operating in the Commissioning Stage

## Summary of Major Plant performance

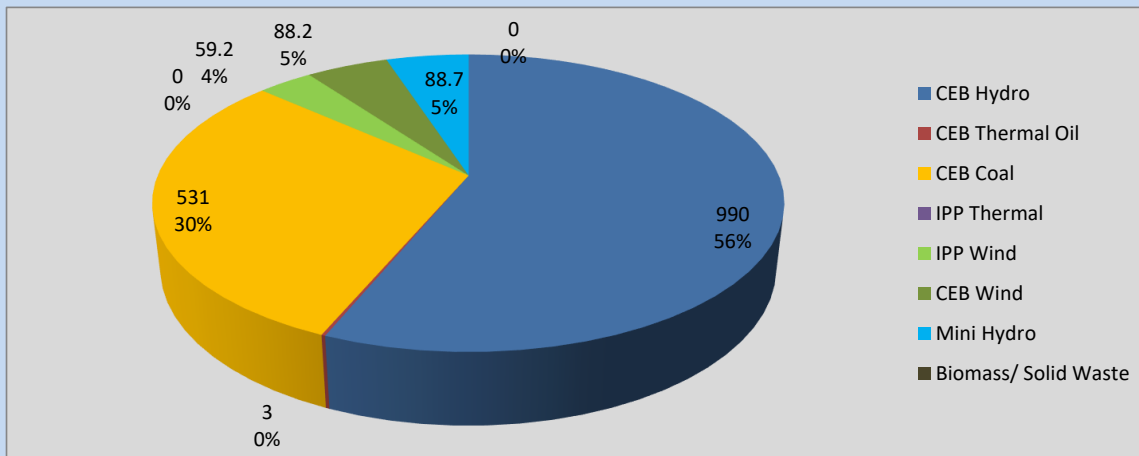
| Plant              | Installed Capacity | Plant Availability | Night peak Load | Plant Dispatch |
|--------------------|--------------------|--------------------|-----------------|----------------|
|                    | (MW)               | (MW)               | (MW)            | (MWh)          |
| Wimalasurendra     | 50                 | 50                 | 0               | 13             |
| Old Laxapana       | 54                 | 53                 | 51              | 1,249          |
| Canyon             | 60                 | 60                 | 0               | 121            |
| New Laxapana       | 100                | 100                | 100             | 2,299          |
| Polpitiya          | 90                 | 90                 | 88              | 2,031          |
| Broadlands         | 35                 | 35                 | 31              | 467            |
| Kotmale            | 201                | 201                | 199             | 4,250          |
| Victoria           | 225                | 216                | 197             | 1,879          |
| Randenigala        | 114                | 102                | 44              | 638            |
| Rantambe           | 50                 | 50                 | 20              | 399            |
| Ukuwela            | 37                 | 36                 | 20              | 68             |
| Bowatenna          | 40                 | 0                  | 0               | 0              |
| Upper Kotmale      | 150                | 150                | 152             | 3,640          |
| Nilambe            | 3                  | 2                  | 3               | 62             |
| Samanalawewa       | 120                | 120                | 10              | 353            |
| Kukule             | 75                 | 75                 | 78              | 1,876          |
| Inginiyagala       | 11                 | 7                  | 0               | 0              |
| Udawalawe          | 6                  | 3                  | 2               | 0              |
| Puttalam Coal I    | 270                | 270                | 261             | 5,607          |
| Puttalam Coal II   | 270                | 0                  | 0               | 0              |
| Puttalam Coal III  | 270                | 270                | 270             | 5,782          |
| KPS Small GTs      | 64                 | 0                  | 0               | 0              |
| KPS GT 7           | 115                | 0                  | 0               | 0              |
| KCCP               | 161                | 0                  | 0               | 0              |
| Sapugaskanda A     | 70                 | 51                 | 0               | 0              |
| Sapugaskanda B     | 70                 | 63                 | 0               | 468            |
| Uthura Janani      | 26                 | 24                 | 0               | 0              |
| Barge CEB          | 60                 | 60                 | 3               | 347            |
| CEB-Thulhiriya     | 10                 | 8                  | 0               | 0              |
| CEB-Kolonnawa      | 20                 | 14                 | 0               | 0              |
| CEB-Mathugama      | 20                 | 13                 | 0               | 0              |
| ACE Matara         | 24                 | 24                 | 0               | 0              |
| Sojitz Kelanitissa | 163                | 0                  | 0               | 0              |
| West Coast         | 270                | 270                | 0               | 0              |
| ACE Embilipitiya   | 93                 | 0                  | 0               | 0              |
| <b>Total</b>       | <b>3,397</b>       | <b>2,417</b>       | <b>1,765</b>    | <b>37,118</b>  |

Plant availability is the availability recorded at 6 am on

August 3, 2022

## Contribution to the Night Peak in MW

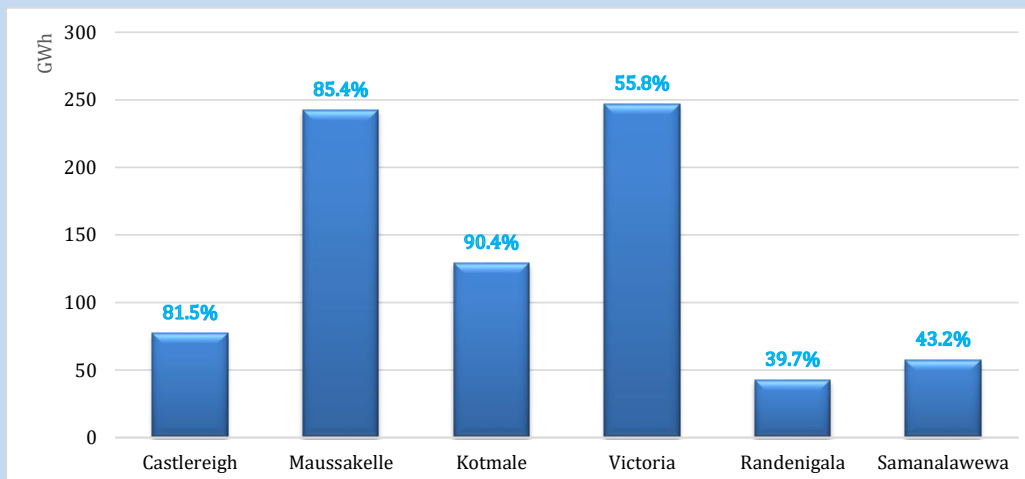
August 2, 2022



|                |            |
|----------------|------------|
| Night Peak*    | 1,759.9 MW |
| Day Peak       | 1,800.1 MW |
| Minimum Demand | 1,101.8 MW |

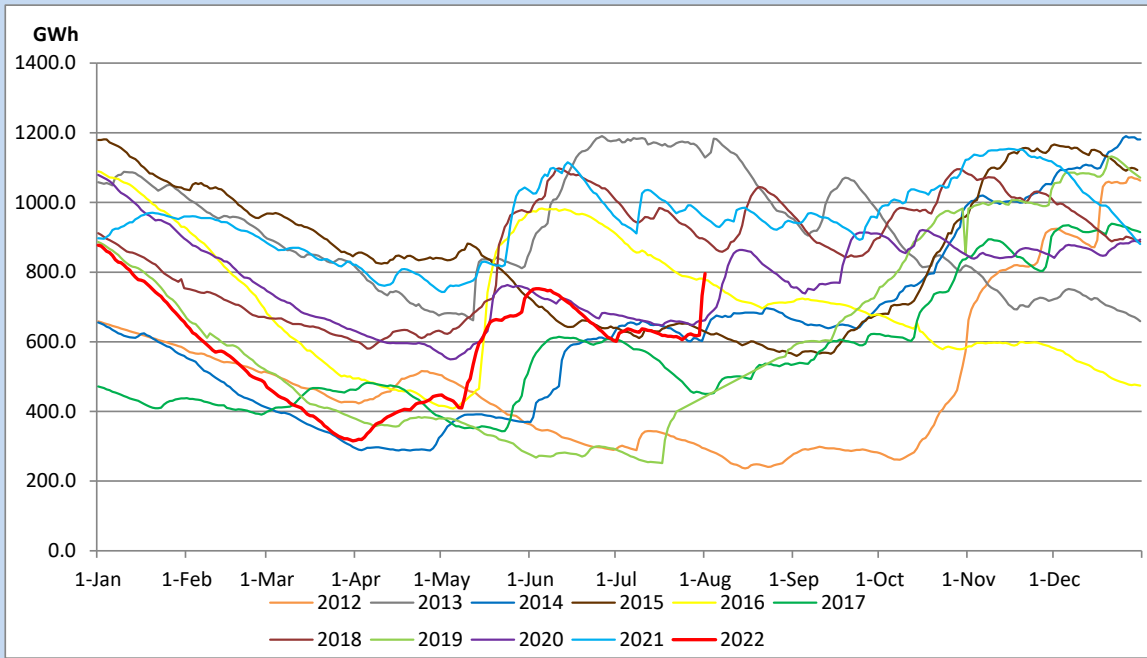
Above figures are excluding contribution from Roof Top Solar, 1MW solar, certain Wind plants and Mini Hydro plants

## Reservoir Levels - as at 06.00 Hr on August 3, 2022

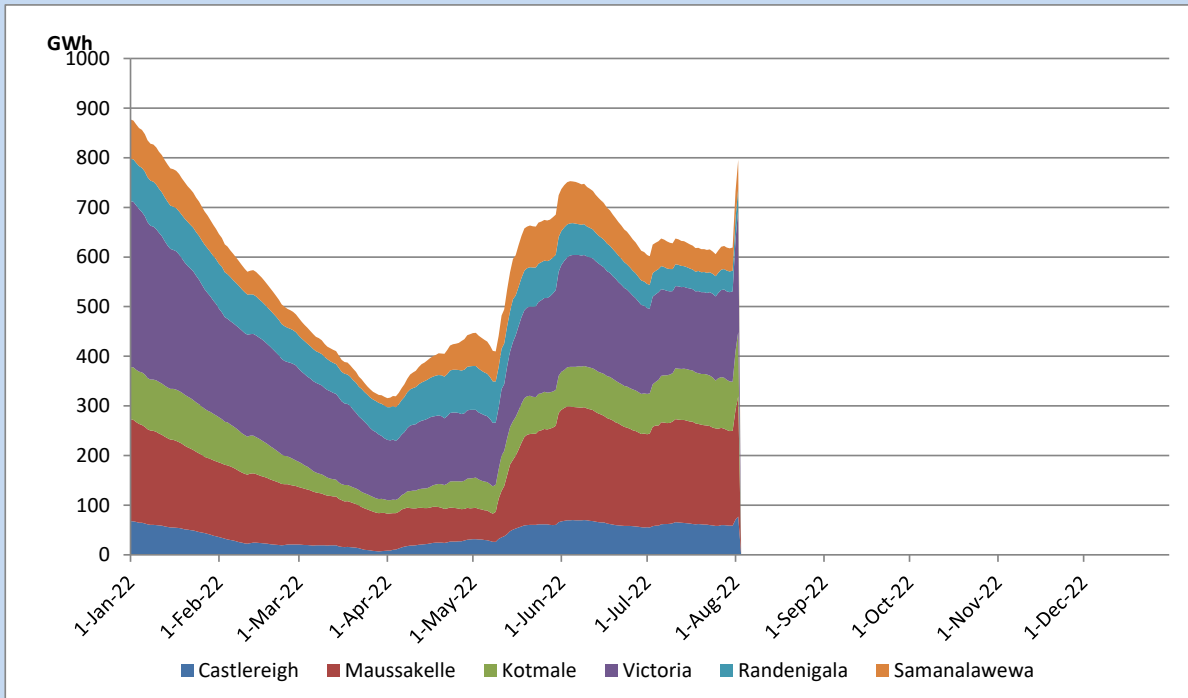


|                       |           |
|-----------------------|-----------|
| Total Reservoir Level | 796.2 GWh |
| % of Total capacity   | 66.1%     |

## Comparison of Total Reservoir Storage Levels with Past Years

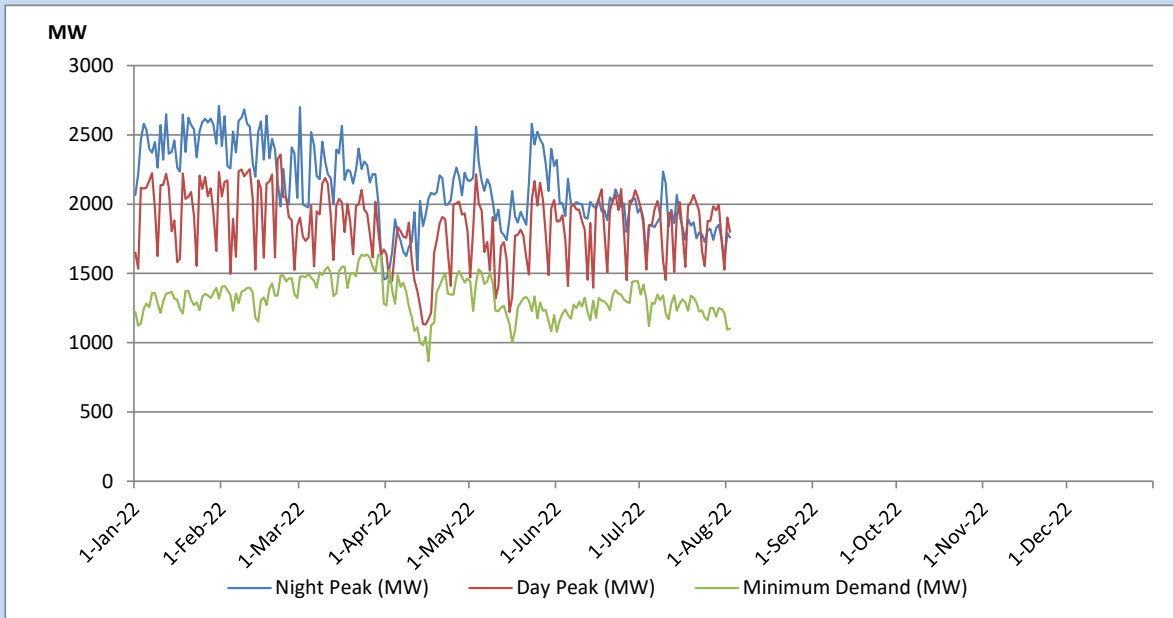


## Variation of Major Hydro Reservoir Levels in the current year (GWh)





## Variation of Demand during the current year

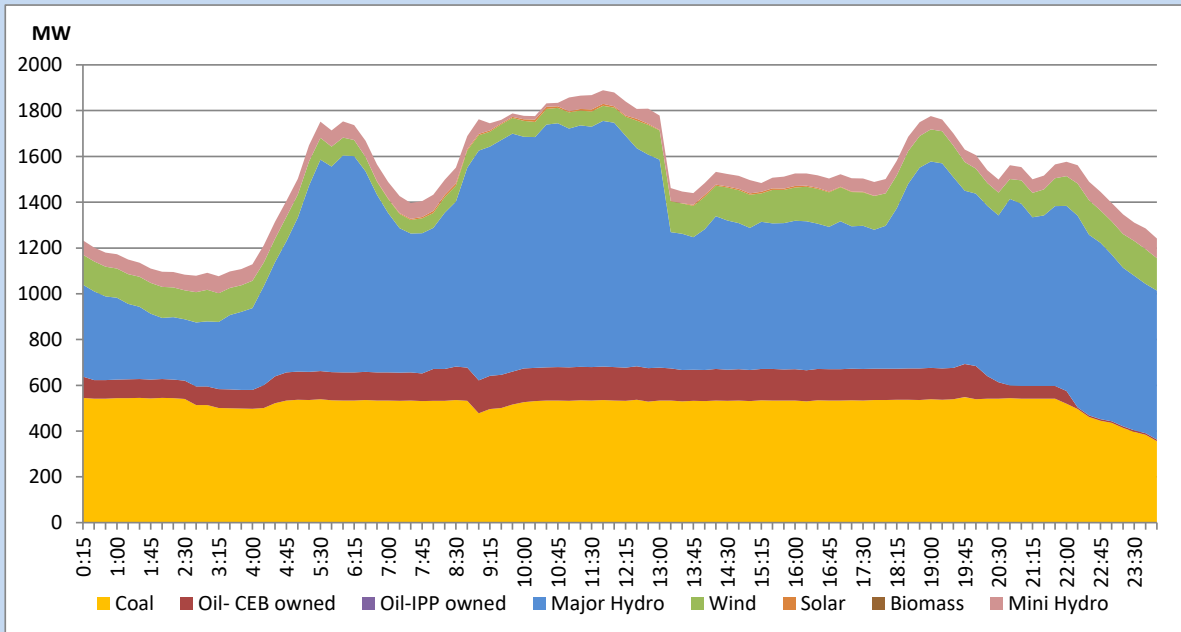


The above figures are excluding contribution from Roof Top Solar, 1MW solar, certain Wind plants and Mini Hydro plants

## Daily Load Curve of the Previous day

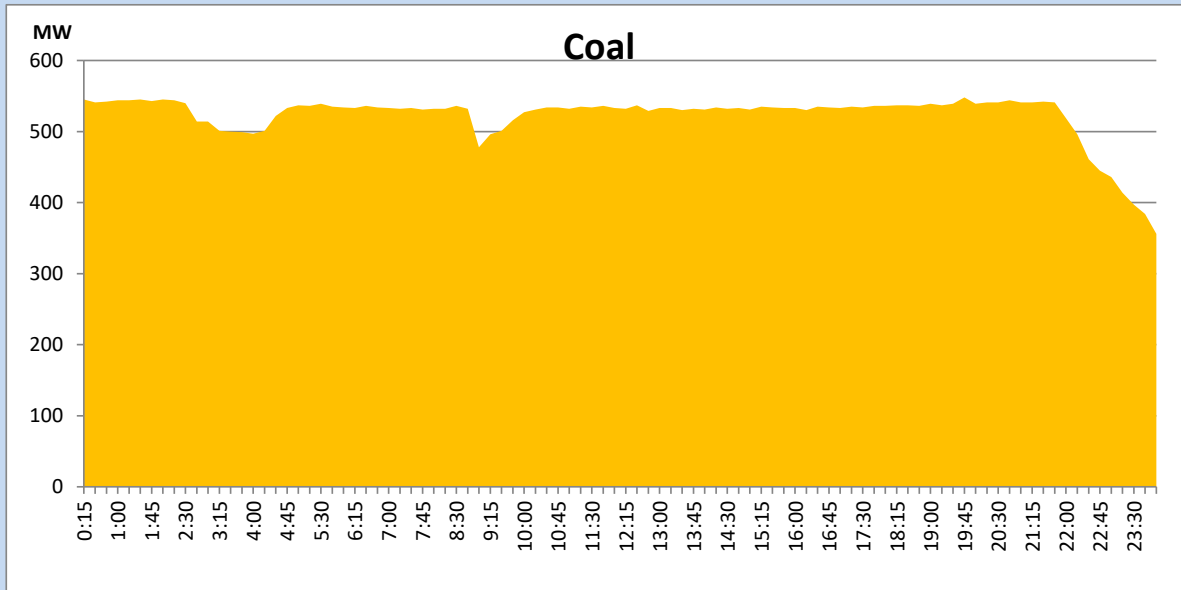
August 1, 2022

Solar and wind data is based on Telemetered Power Stations only



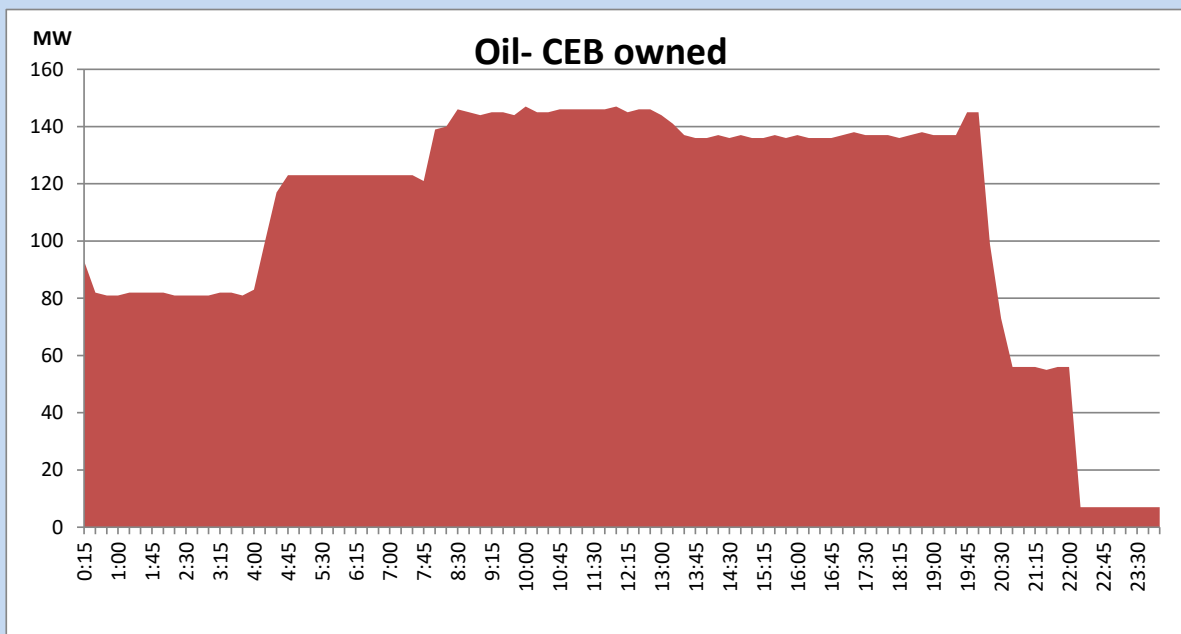
## Coal Generation during the Previous day

August 1, 2022



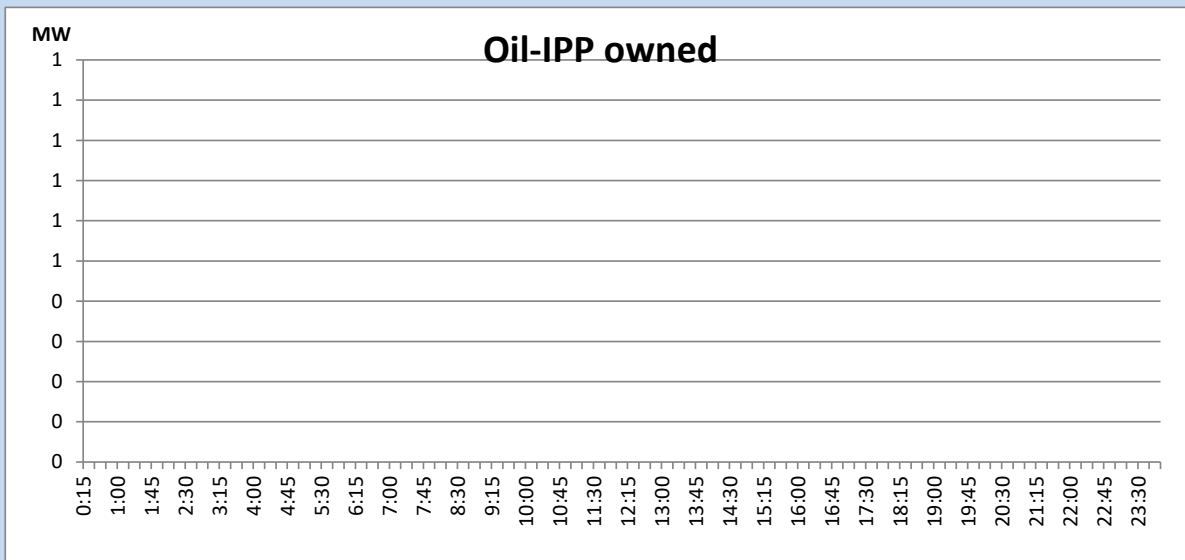
## CEB Oil Plant Generation during the Previous day

August 1, 2022



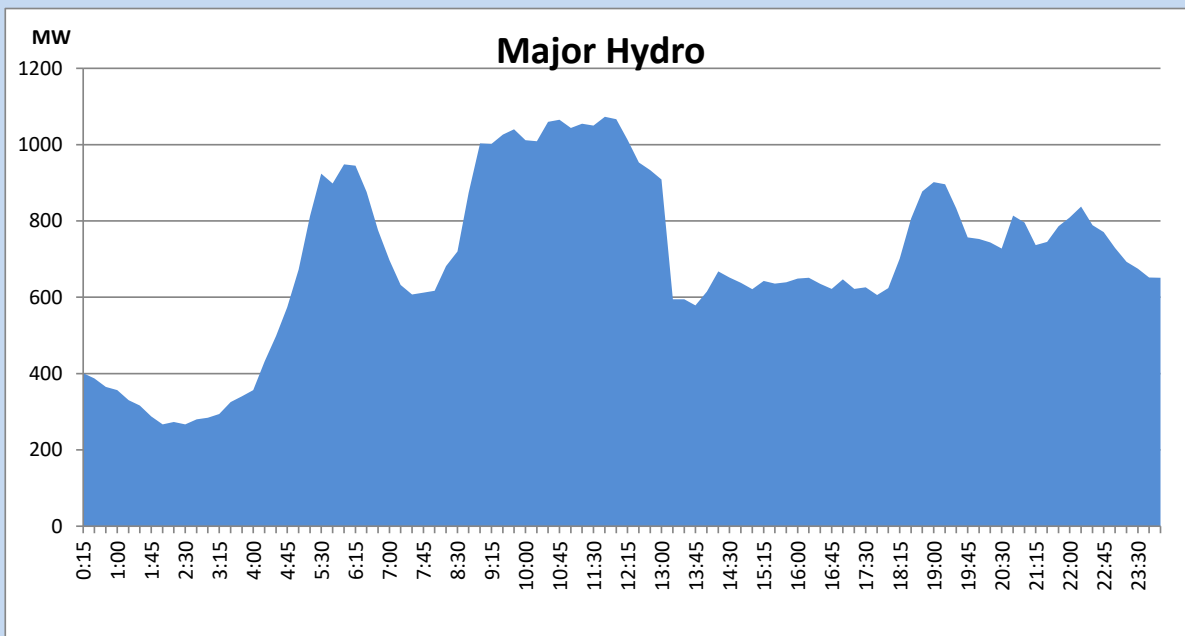
## IPP Oil Plant Generation during the Previous day

August 1, 2022



## Major Hydro Generation during the Previous day

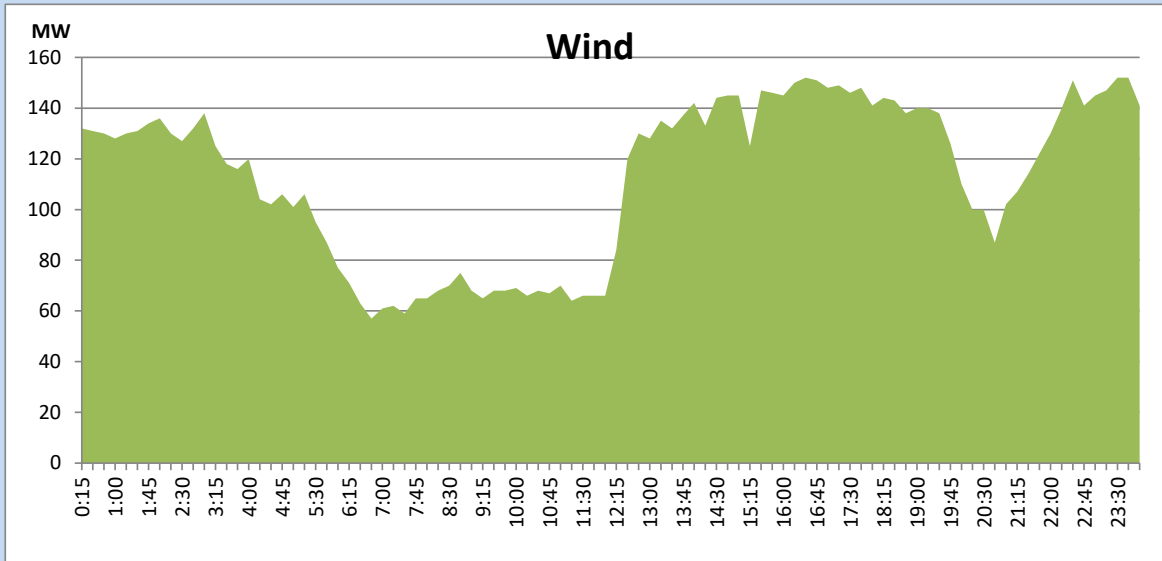
August 1, 2022



## Wind Generation during the Previous day

August 1, 2022

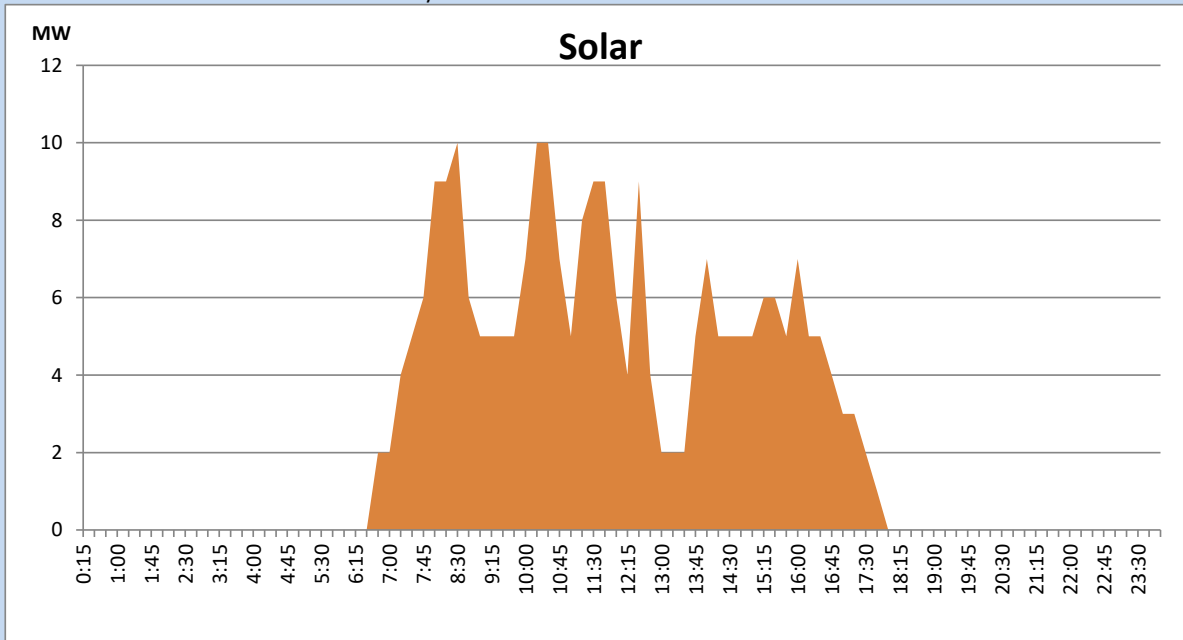
Based on Telemetered Power Stations only



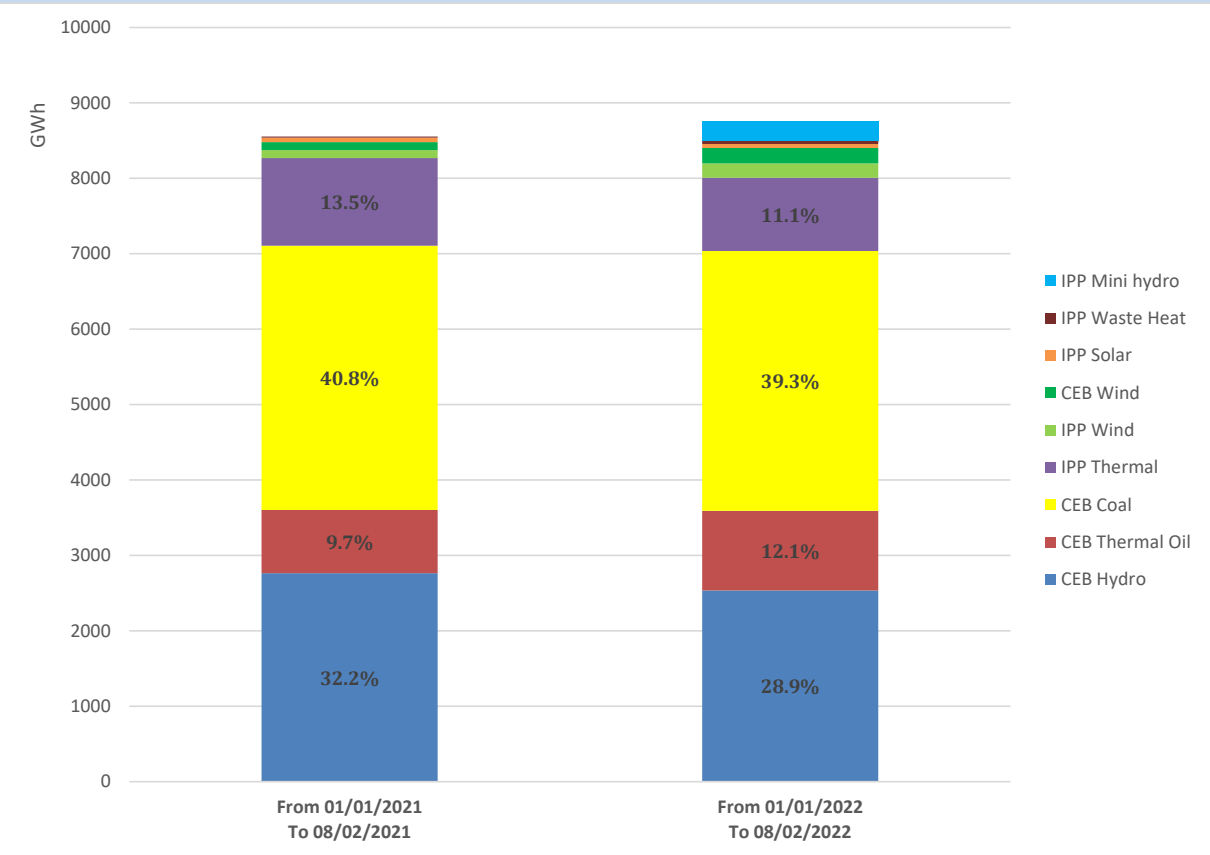
## Solar Generation during the Previous day

August 1, 2022

Based on Telemetered Power Stations only



# Cumulative Dispatch Comparison with Last Year



## Thermal Plant Fuel types

| Power Station                  | Primary Fuel      |
|--------------------------------|-------------------|
| CEB Thermal                    |                   |
| Sapugaskanda 1                 | Heavy Fuel        |
| Sapugaskanda 2                 | Heavy Fuel        |
| Kelanitissa Small Gas Turbines | Auto Diesel       |
| GT 7 - Kelanitissa             | Auto Diesel       |
| Kelanitissa CCY                | Naphtha or Diesel |
| Lakvijaya 1                    | Coal              |
| Lakvijaya 2                    | Coal              |
| Lakvijaya 3                    | Coal              |
| Uthuru Janani                  | Heavy Fuel        |
| Barge CEB                      | Heavy Fuel        |

| Power Station        | Primary Fuel             |
|----------------------|--------------------------|
| Private Thermal      |                          |
| Sojitz - Kelanitissa | Auto Diesel              |
| West Coast           | Auto Diesel / Heavy Fuel |
| ACE Matara           | Heavy Fuel               |
| ACE Embilipitiya     | Heavy Fuel               |

## Major Incidents during the day -as reported by CEB morning of

August 3, 2022

- 1) Rotational manual load shedding was carried out from 5:30 hrs to 8:30 hrs and 13:00 hrs to 22:00 hrs.
- 2) Norton Pond spilling started at 18:56hrs and continues to the present hour.
- 3) Canyon Pond spilling started at 01:14hrs (03/08/2022) and continues to the present hour.
- 4) Upper Kotmale, Kukule and Laxapana spilling continues to the present hour.