

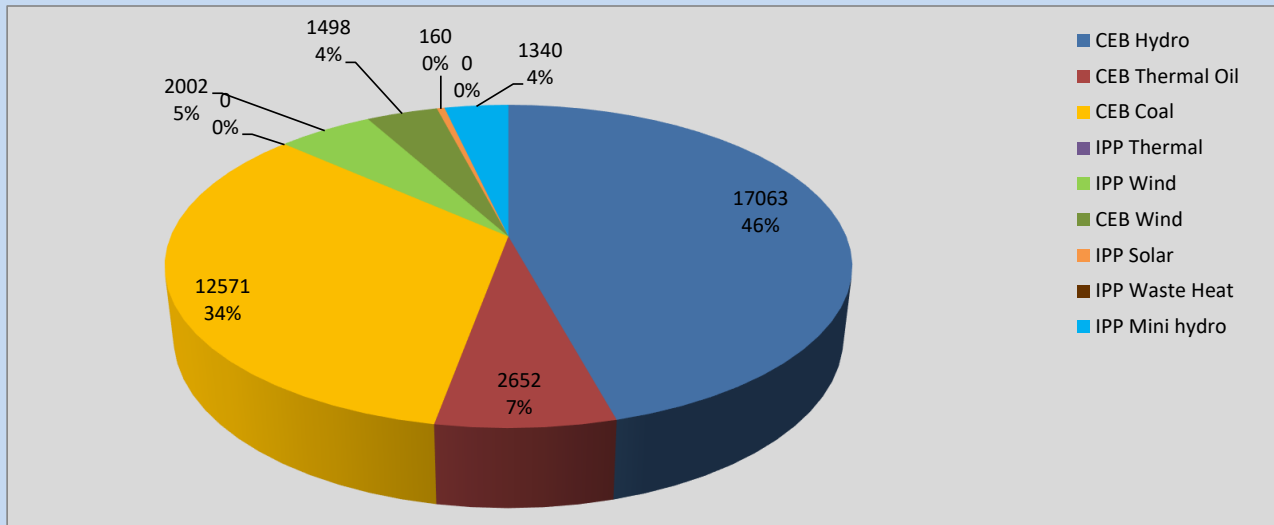
# Generation and Reservoirs Statistics

August 1, 2022



PUBLIC UTILITIES COMMISSION OF SRI LANKA

## Daily Generation Mix in MWh



**Total Generation** **37,286 MWh**

Note: Above data is excluding contribution from Roof Top Solar, 1MW Solar and certain Mini Hydro plants

## Cumulative Dispatch

Note: Following data is Excluding contribution from Roof Top Solar, 1MW solar and Mini Hydro plants

### For Current Month

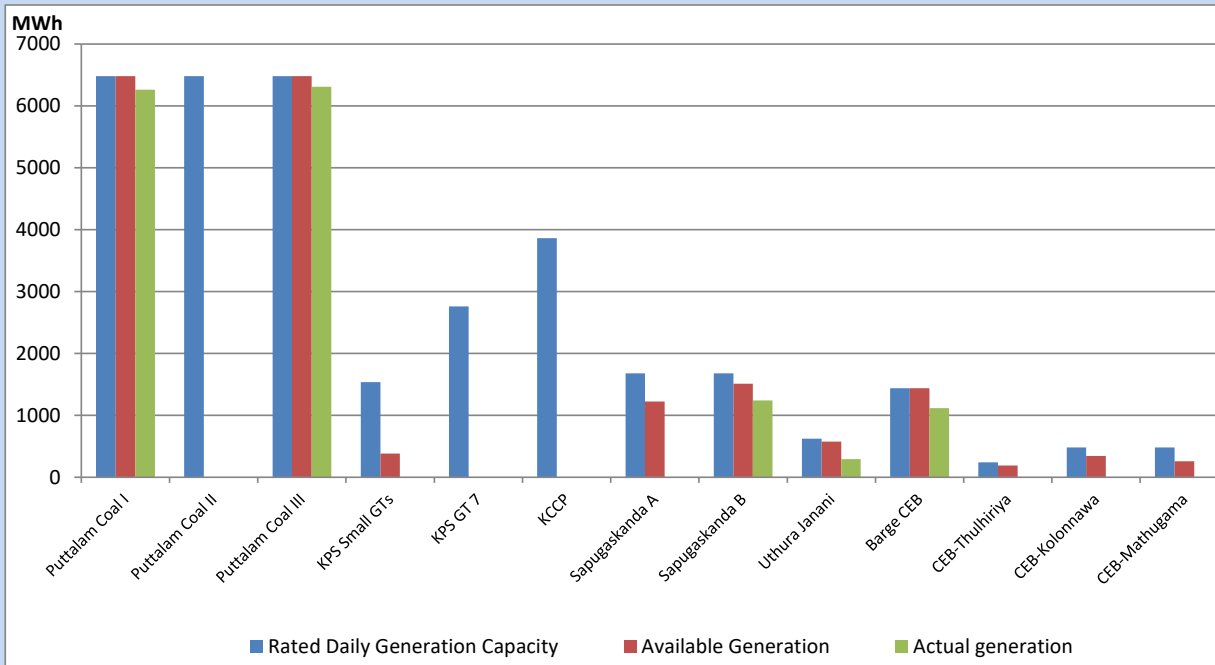
Category	Dispatch (GWh)	Percentage
CEB Hydro	17.06	45.76%
CEB Thermal Oil	2.65	7.11%
CEB Coal	12.57	33.72%
IPP Thermal	0.00	0.00%
SPP Wind	2.00	5.36%
CEB Wind	1.50	4.02%
SPP Solar	0.16	0.43%
SPP Solid Waste	0.00	0.00%
Mini Hydro	1.34	3.59%
<b>Total</b>	<b>37.28</b>	

### For Current Year

Category	Dispatch (GWh)	Percentage
CEB Hydro	2,515.2	28.82%
CEB Thermal Oil	1,058.0	12.12%
CEB Coal	3,432.2	39.33%
IPP Thermal	972.4	11.14%
SPP Wind	186.0	2.13%
CEB Wind	202.8	2.32%
SPP Solar	54.1	0.62%
SPP Solid Waste	44.1	0.50%
Mini Hydro	262.3	3.01%
<b>Total</b>	<b>8,726.9</b>	

## CEB owned Thermal Plant Dispatch

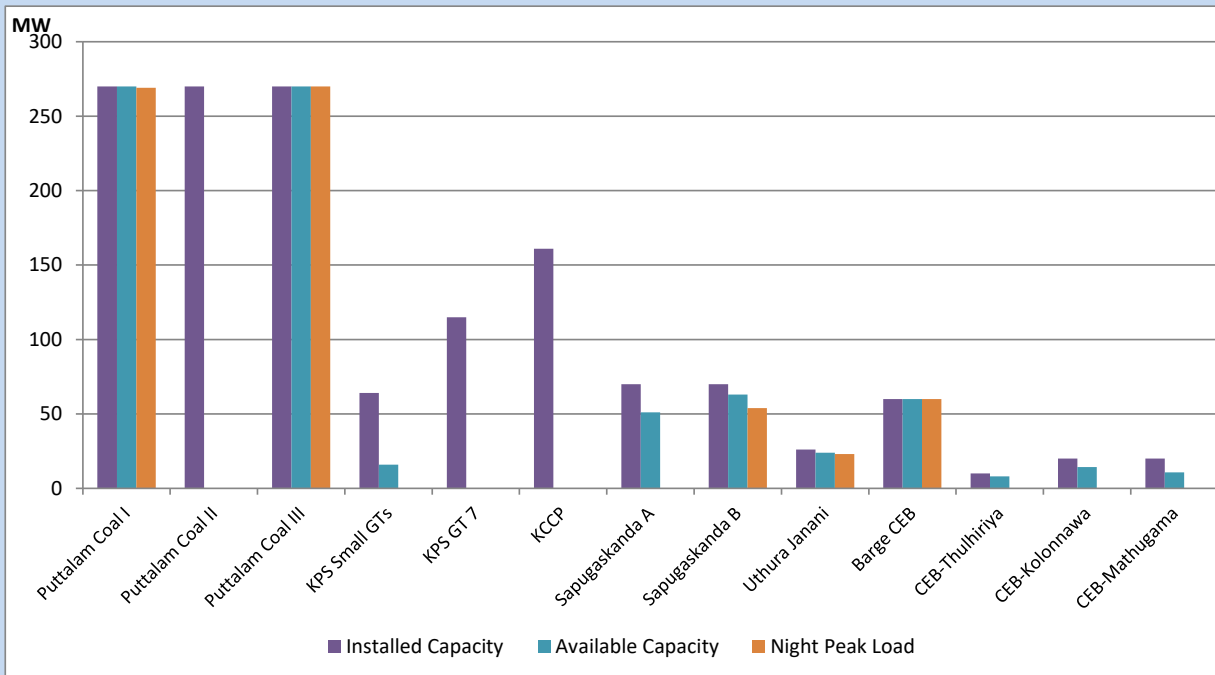
August 1, 2022



Available Generation is estimated based on plant availability at 6.00am on

August 2, 2022

## CEB owned Thermal Plant Loading at the Night Peak



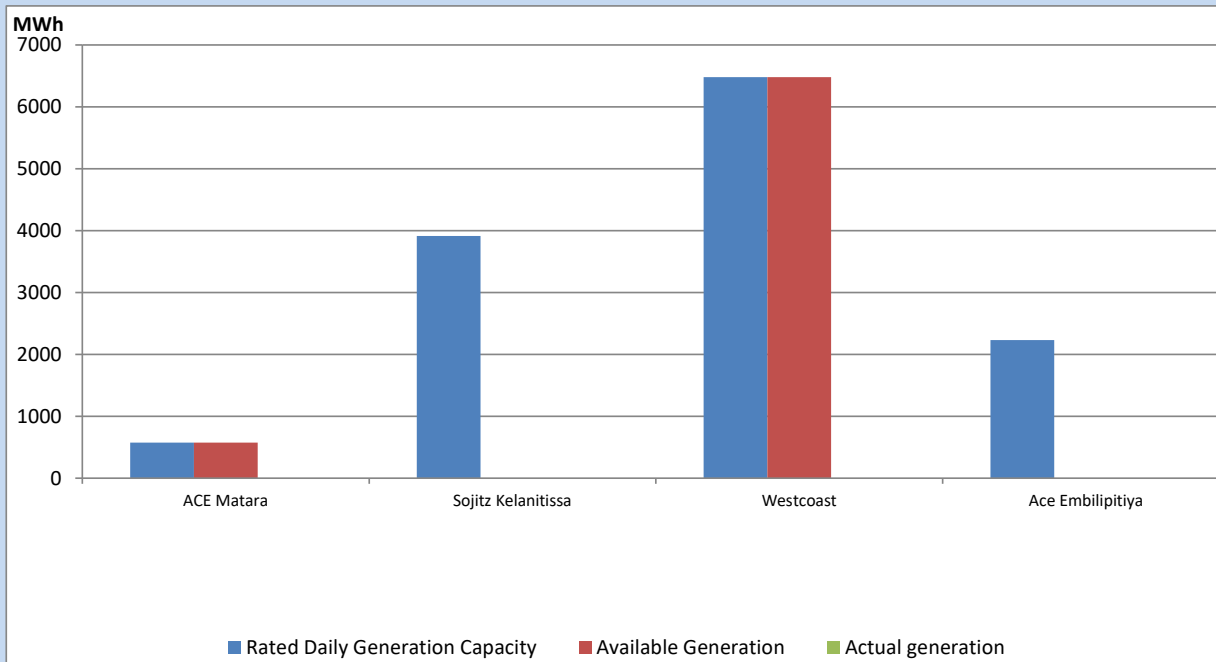
Note- Plant availability is recorded at 6.00 am on

August 2, 2022

## IPP owned Thermal Plant Dispatch

August 1, 2022

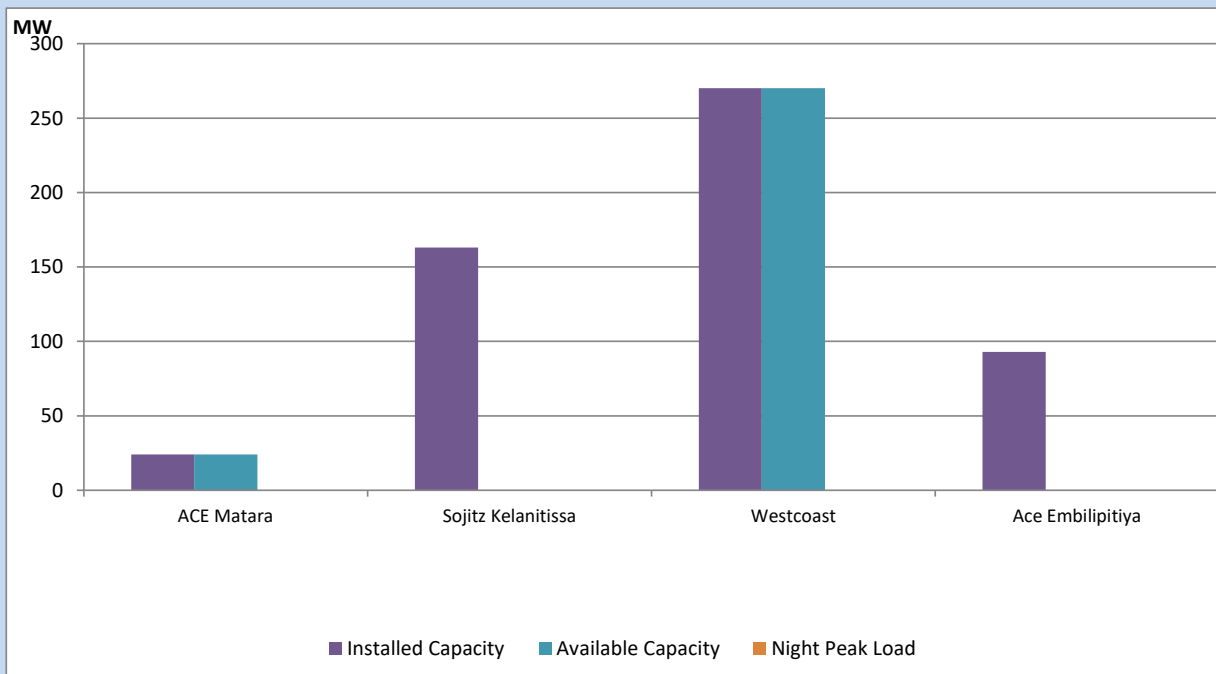
Asia Power, V Power Pallekale, Vpower Galle, V Power Horana, Vpower Hambantota, Vpower Valachchena and Altaqa Mahiyanganaya are not available due to expiration of PPAs



Available Generation is estimated based on plant availability at 6.00am on

August 2, 2022

## IPP owned Thermal Plant Loading at the Night Peak

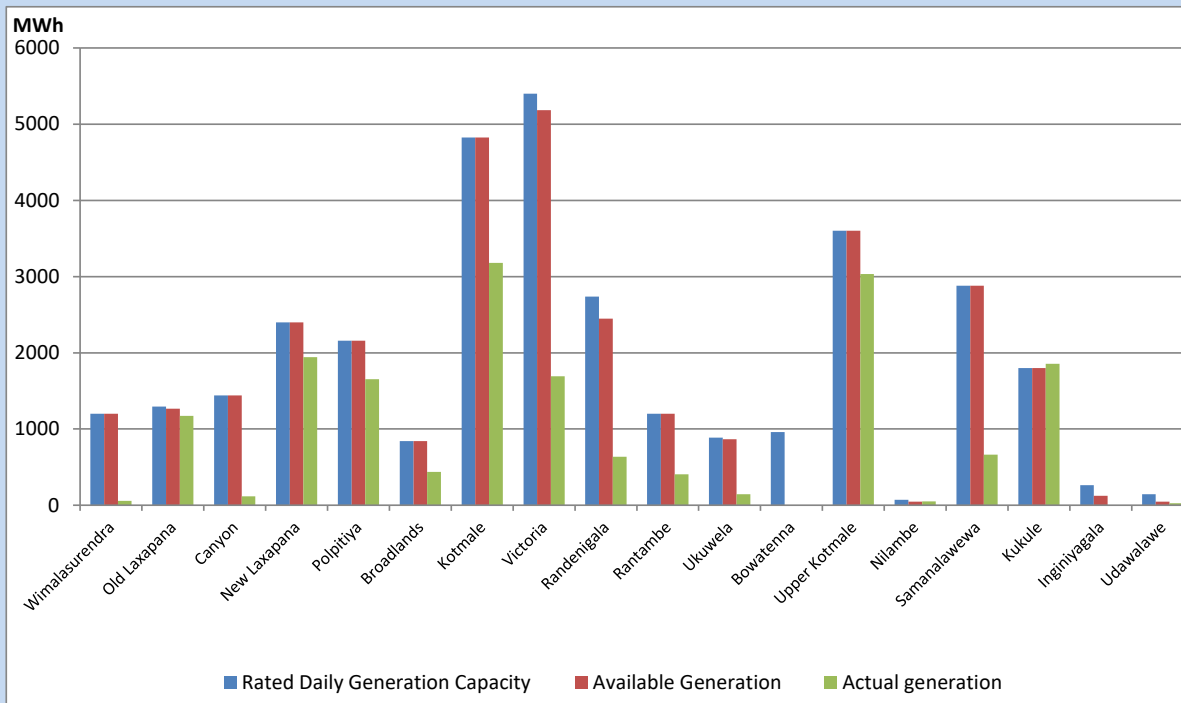


Note- Plant availability is recorded at 6.00 am on

August 2, 2022

## Major Hydro Plant Dispatch

August 1, 2022

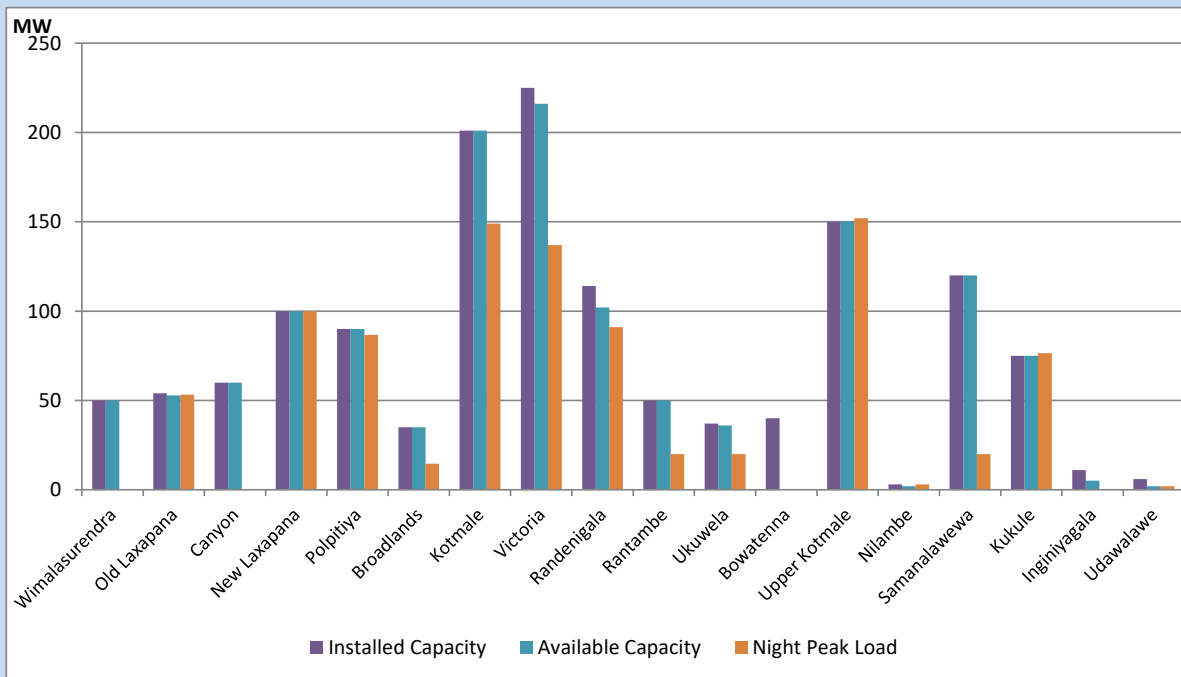


Available Generation is estimated based on plant availability at 6.00am on August 2, 2022  
 Broadlands power plant is operating in the Commissioning Stage

August 2, 2022

## Major Hydro Plant Loading at Night Peak

August 1, 2022



Note- Plant availability is recorded at 6.00 am on August 2, 2022  
 Broadlands power plant is operating in the Commissioning Stage

## Summary of Major Plant performance

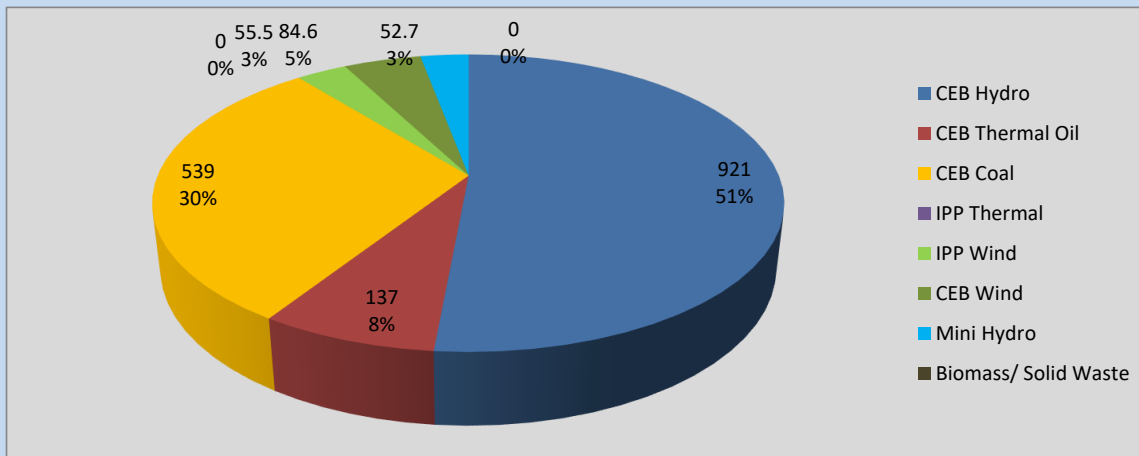
Plant	Installed Capacity	Plant Availability	Night peak Load	Plant Dispatch
	(MW)	(MW)	(MW)	(MWh)
Wimalasurendra	50	50	0	57
Old Laxapana	54	53	53	1,173
Canyon	60	60	0	118
New Laxapana	100	100	100	1,944
Polpitiya	90	90	87	1,652
Broadlands	35	35	15	436
Kotmale	201	201	149	3,180
Victoria	225	216	137	1,692
Randenigala	114	102	91	637
Rantambe	50	50	20	404
Ukuwela	37	36	20	143
Bowatenna	40	0	0	0
Upper Kotmale	150	150	152	3,035
Nilambe	3	2	3	49
Samanalawewa	120	120	20	664
Kukule	75	75	77	1,854
Inginiyagala	11	5	0	0
Udawalawe	6	2	2	25
Puttalam Coal I	270	270	269	6,261
Puttalam Coal II	270	0	0	0
Puttalam Coal III	270	270	270	6,310
KPS Small GTs	64	16	0	0
KPS GT 7	115	0	0	0
KCCP	161	0	0	0
Sapugaskanda A	70	51	0	0
Sapugaskanda B	70	63	54	1,241
Uthura Janani	26	24	23	292
Barge CEB	60	60	60	1,119
CEB-Thulhiriya	10	8	0	0
CEB-Kolonnawa	20	14	0	0
CEB-Mathugama	20	11	0	0
ACE Matara	24	24	0	0
Sojitz Kelanitissa	163	0	0	0
West Coast	270	270	0	0
ACE Embilipitiya	93	0	0	0
<b>Total</b>	<b>3,397</b>	<b>2,428</b>	<b>1,794</b>	<b>37,286</b>

Plant availability is the availability recorded at 6 am on

August 2, 2022

## Contribution to the Night Peak in MW

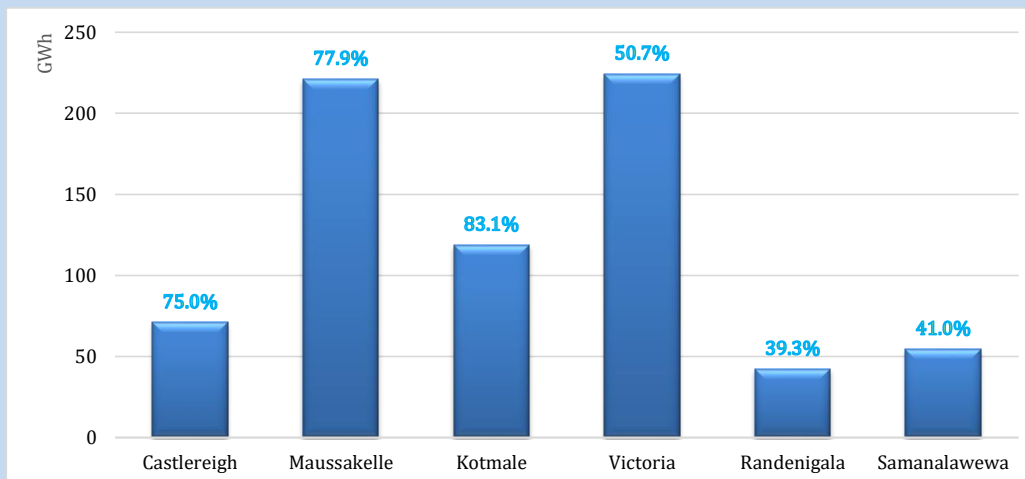
August 1, 2022



Night Peak*	1,789.8 MW
Day Peak	1,902.3 MW
Minimum Demand	1,094.6 MW

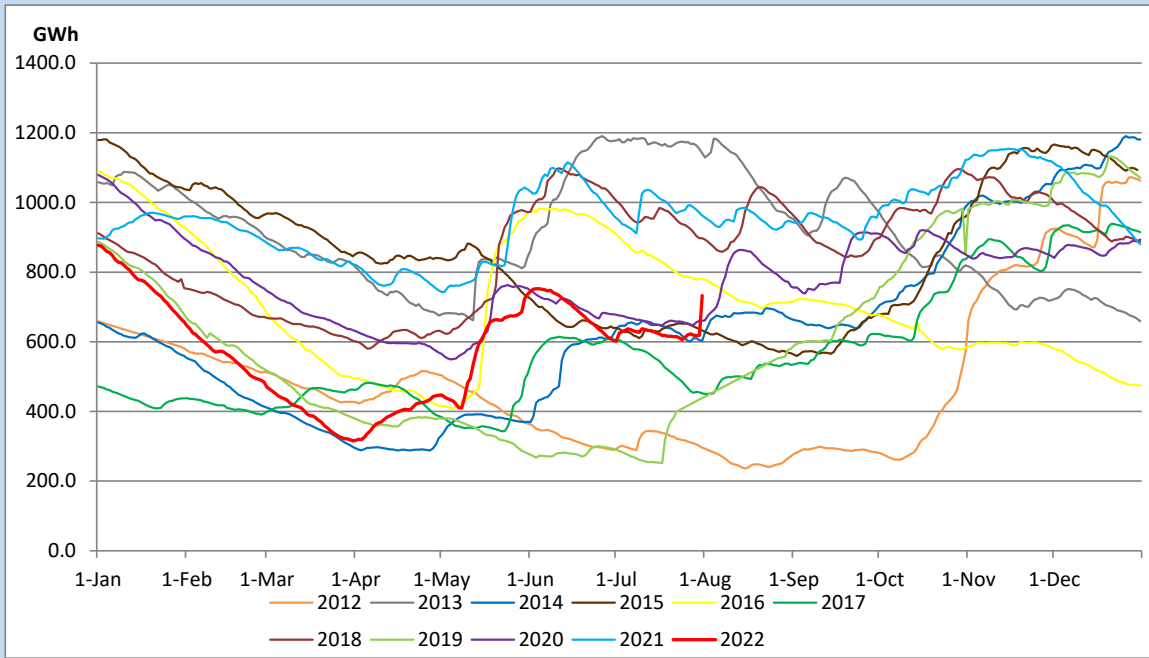
Above figures are excluding contribution from Roof Top Solar, 1MW solar, certain Wind plants and Mini Hydro plants

## Reservoir Levels - as at 06.00 Hr on August 2, 2022

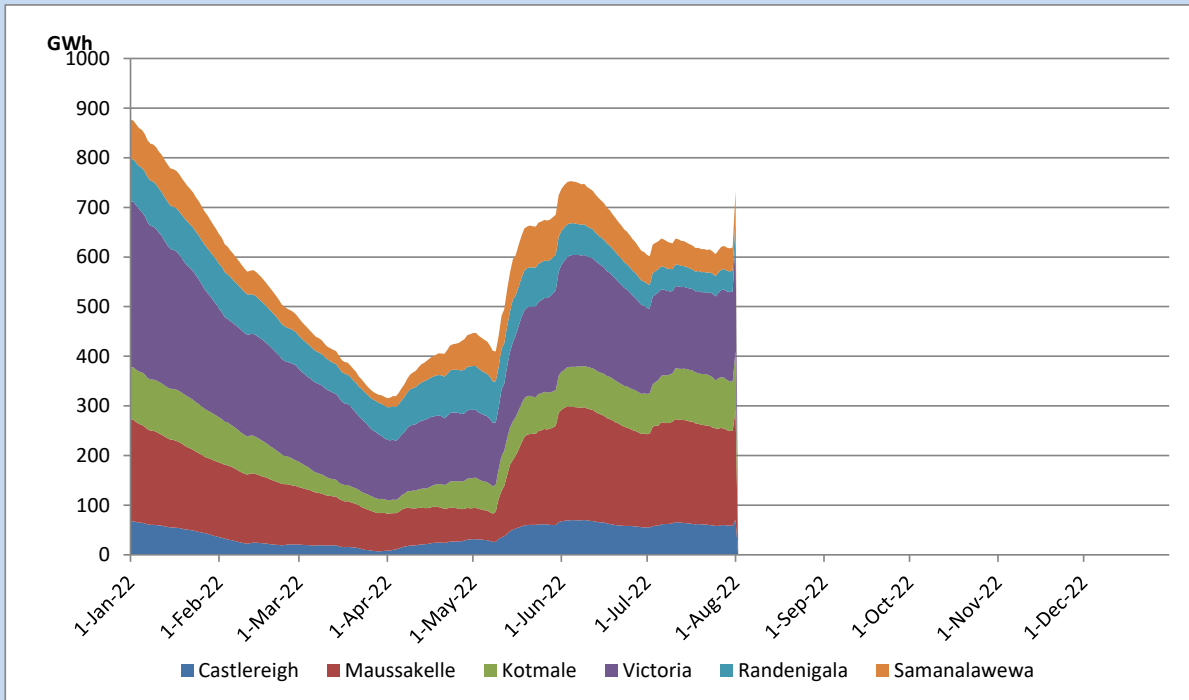


Total Reservoir Level	732.4 GWh
% of Total capacity	60.8%

## Comparison of Total Reservoir Storage Levels with Past Years

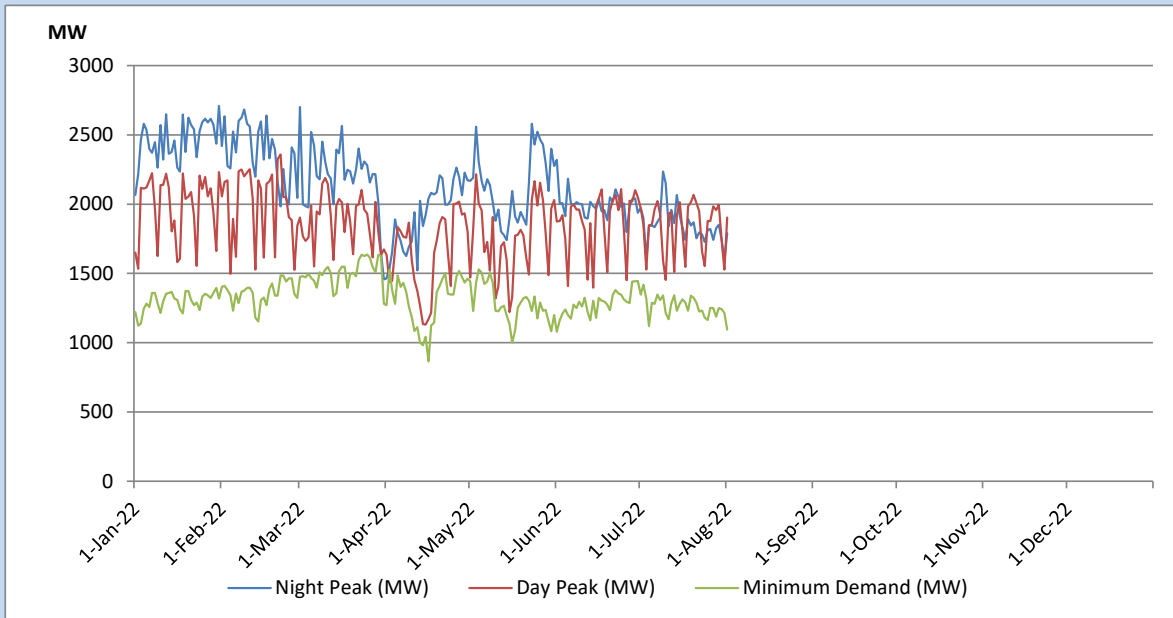


## Variation of Major Hydro Reservoir Levels in the current year (GWh)





## Variation of Demand during the current year

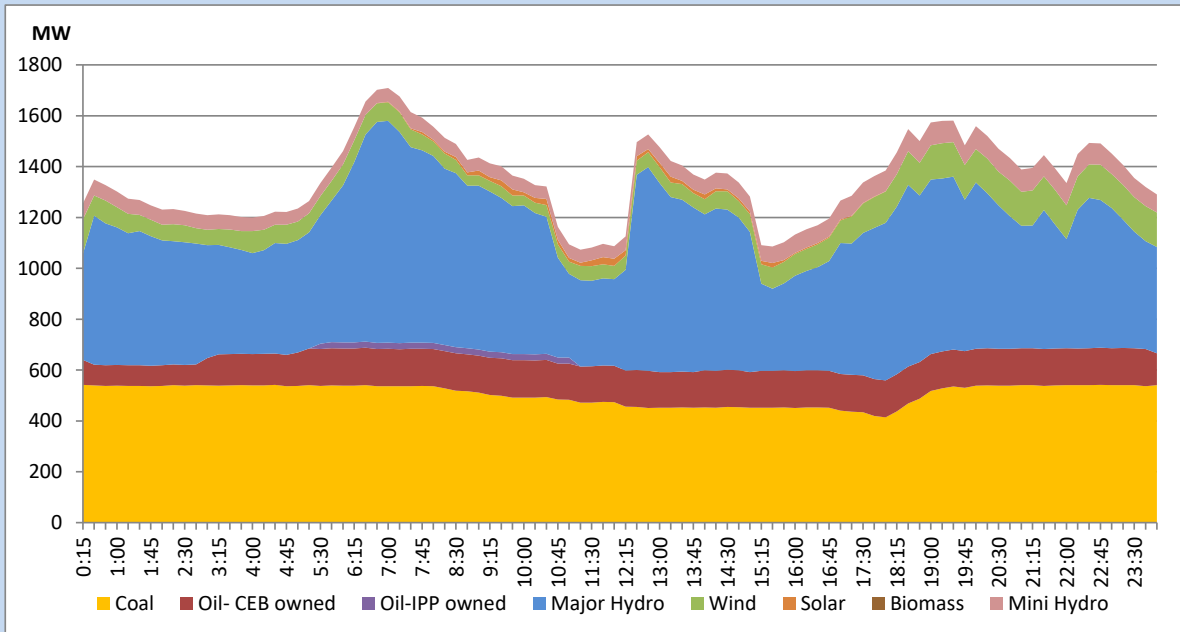


The above figures are excluding contribution from Roof Top Solar, 1MW solar, certain Wind plants and Mini Hydro plants

## Daily Load Curve of the Previous day

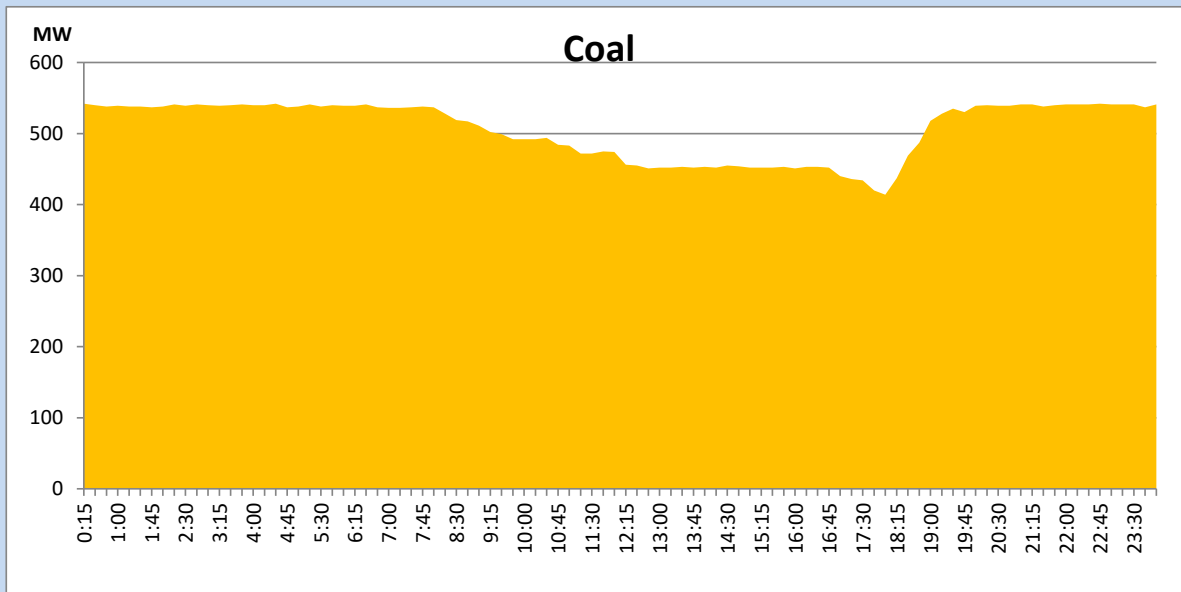
July 31, 2022

Solar and wind data is based on Telemetered Power Stations only



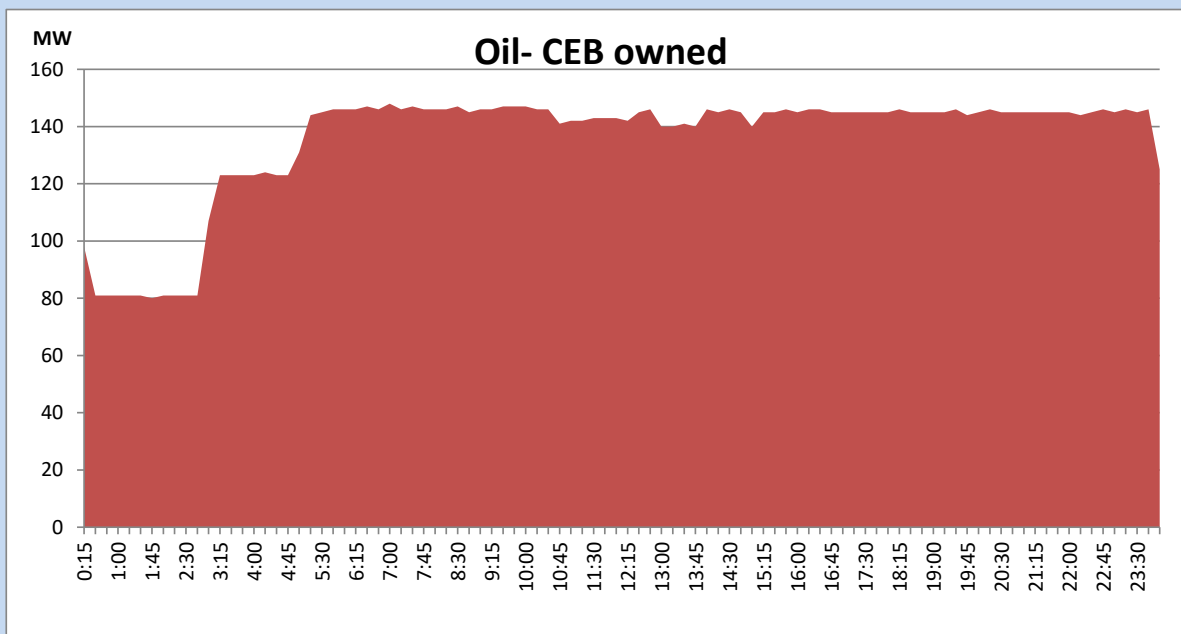
## Coal Generation during the Previous day

July 31, 2022



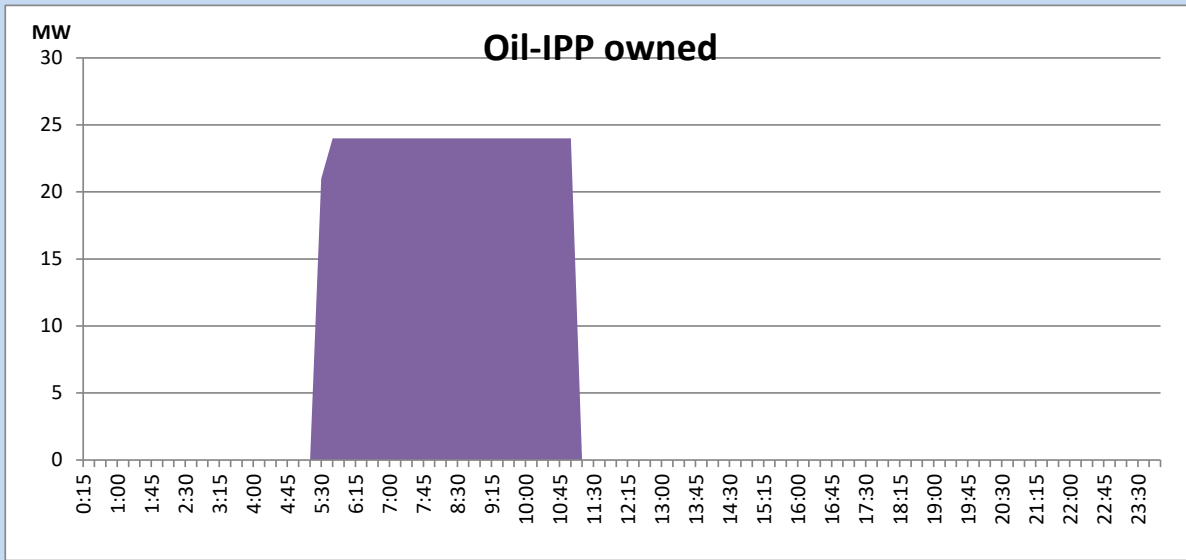
## CEB Oil Plant Generation during the Previous day

July 31, 2022



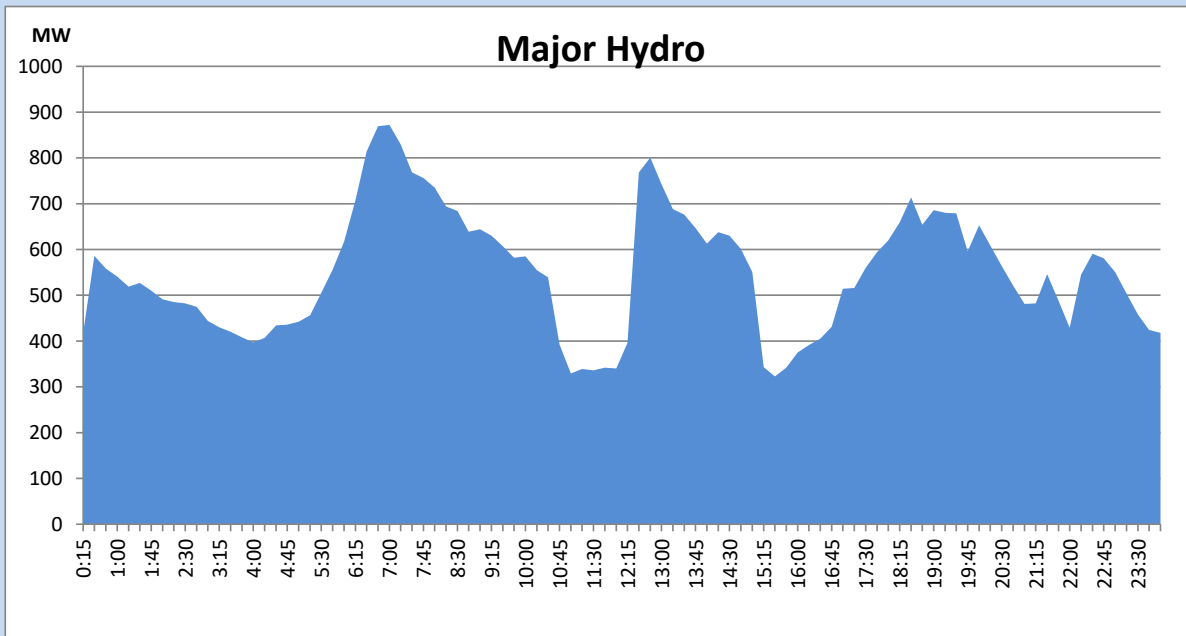
## IPP Oil Plant Generation during the Previous day

July 31, 2022



## Major Hydro Generation during the Previous day

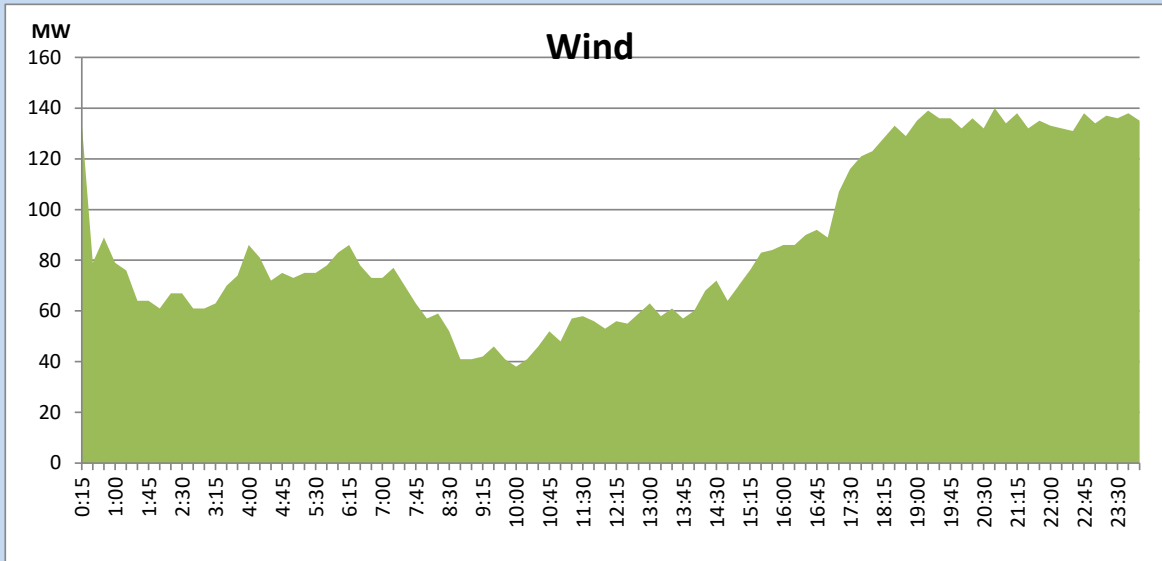
July 31, 2022



## Wind Generation during the Previous day

July 31, 2022

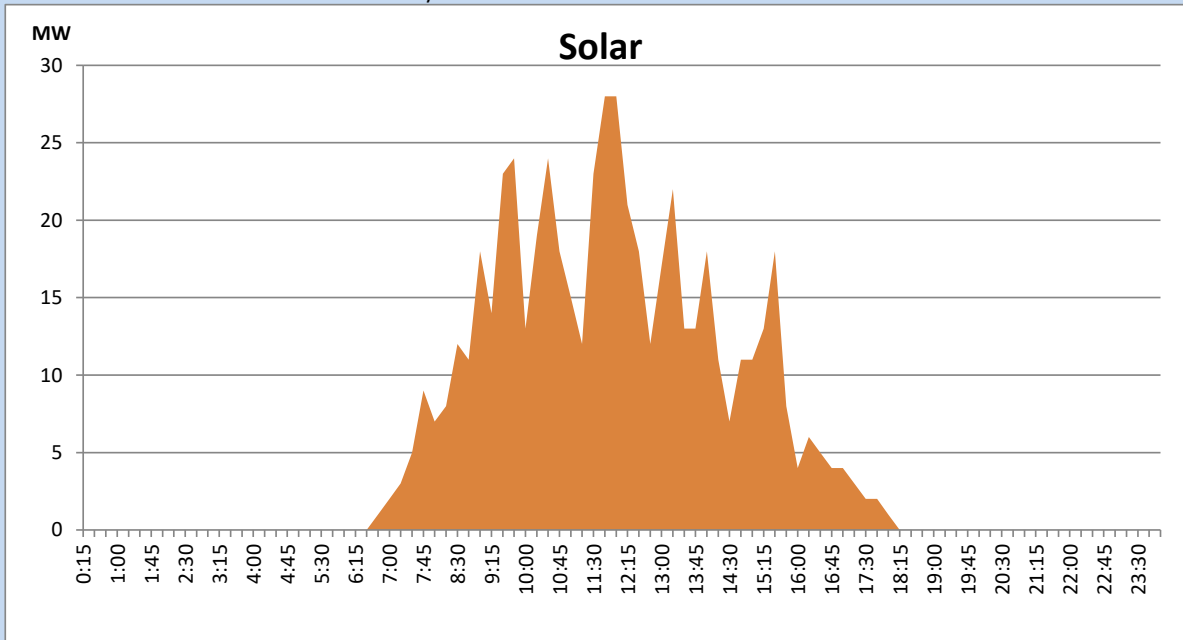
Based on Telemetered Power Stations only



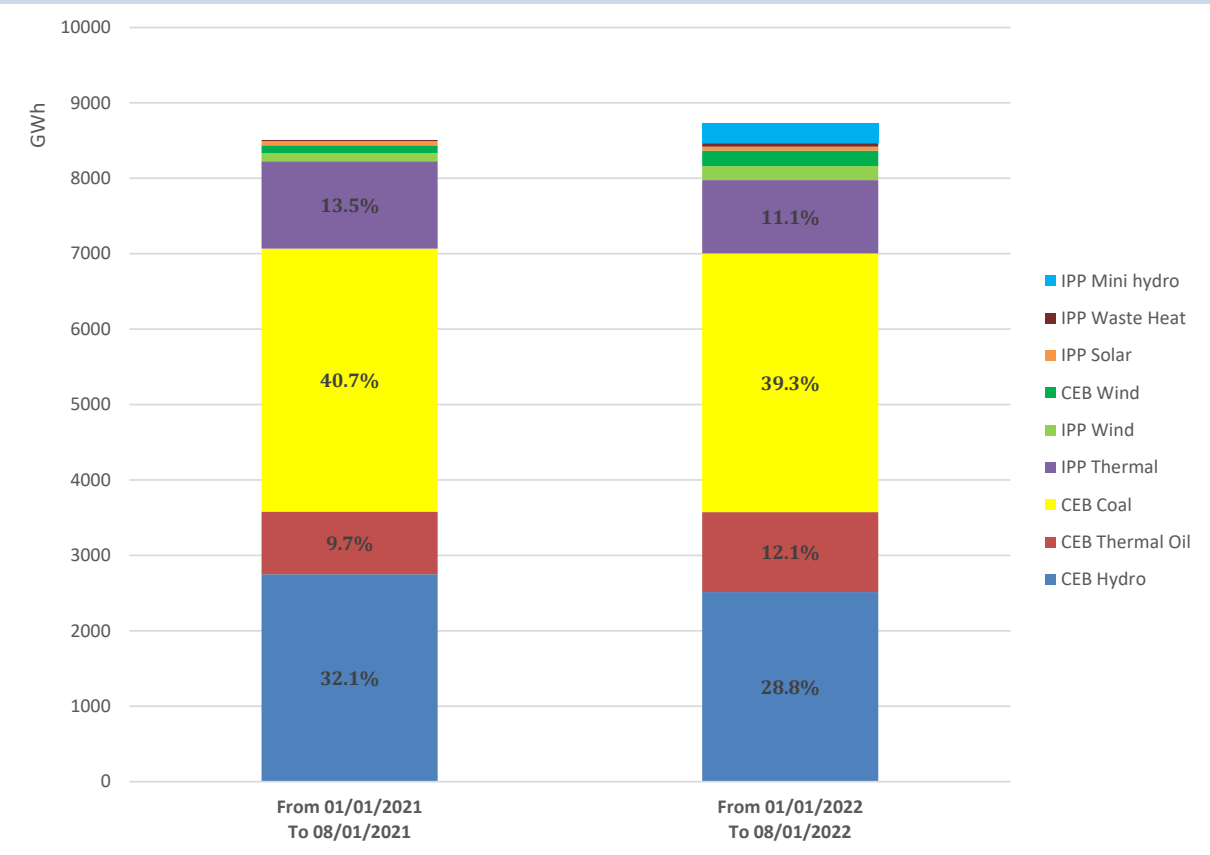
## Solar Generation during the Previous day

July 31, 2022

Based on Telemetered Power Stations only



# Cumulative Dispatch Comparison with Last Year



## Thermal Plant Fuel types

Power Station	Primary Fuel
CEB Thermal	
Sapugaskanda 1	Heavy Fuel
Sapugaskanda 2	Heavy Fuel
Kelanitissa Small Gas Turbines	Auto Diesel
GT 7 - Kelanitissa	Auto Diesel
Kelanitissa CCY	Naphtha or Diesel
Lakvijaya 1	Coal
Lakvijaya 2	Coal
Lakvijaya 3	Coal
Uthuru Janani	Heavy Fuel
Barge CEB	Heavy Fuel

Power Station	Primary Fuel
Private Thermal	
Sojitz - Kelanitissa	Auto Diesel
West Coast	Auto Diesel / Heavy Fuel
ACE Matara	Heavy Fuel
ACE Embilipitiya	Heavy Fuel

## Major Incidents during the day -as reported by CEB morning of

August 2, 2022

- 1) Rotational manual load shedding was carried out from 5:30 hrs to 8:30 hrs and 13:00 hrs to 22:00 hrs.
- 2) Old Laxapana gen 03, 02 & 01 tripped at 8:40 hrs, 8:54 hrs and 9:32 hrs respectively with the lubrication cooling water flow low indication and resumed generation at 9:31 hrs, 9:46 hrs and 10:35 hrs respectively.
- 3) Polpitiya-New Laxapana cct 02 tripped at 12:11 hrs due to the operation of distance protection. At the same time, Old Laxapana gen 01, 02 & 03 tripped due to tripping of the T/F. The cct was normalized by 13:31 hrs. The Old Laxapana m/cs resumed generation by 13:25 hrs.
- 4) Kukule, Laxapana and Upper Kotmale spilling started at 6:30 hrs, 9:10 hrs and 12:09 hrs and continues to the present hour. Norton and Canyon pond spilling started at 8:58 hrs and 13:20 hrs and stopped at 23:30 hrs and 18:50 hrs respectively.