

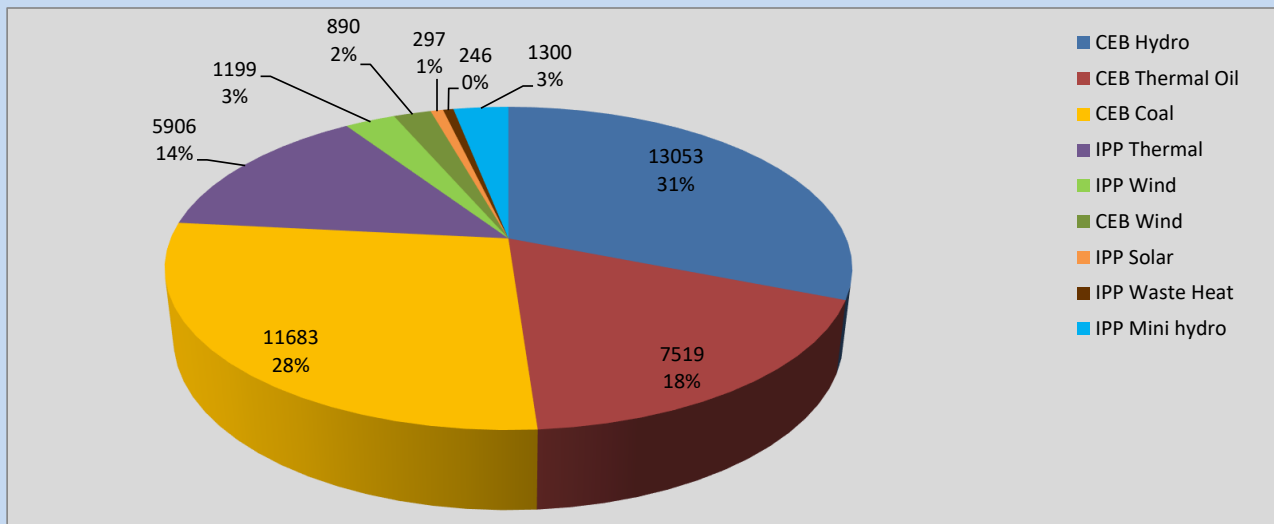
# Generation and Reservoirs Statistics

June 30, 2022



PUBLIC UTILITIES COMMISSION OF SRI LANKA

## Daily Generation Mix in MWh



Total Generation **42,093 MWh**

Note: Above data is excluding contribution from Roof Top Solar, 1MW Solar and certain Mini Hydro plants

## Cumulative Dispatch

Note: Following data is Excluding contribution from Roof Top Solar, 1MW solar and Mini Hydro plants

### For Current Month

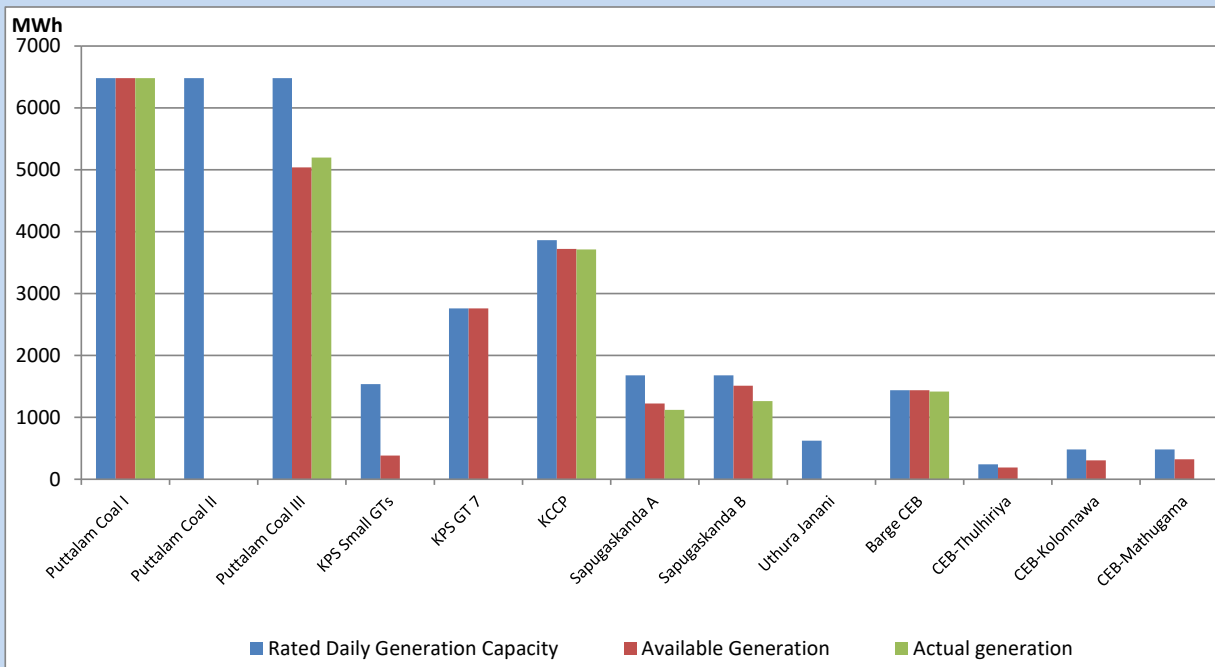
Category	Dispatch (GWh)	Percentage
CEB Hydro	442.30	36.44%
CEB Thermal Oil	81.63	6.73%
CEB Coal	461.98	38.07%
IPP Thermal	63.08	5.20%
SPP Wind	48.97	4.04%
CEB Wind	49.16	4.05%
SPP Solar	7.40	0.61%
SPP Solid Waste	7.19	0.59%
Mini Hydro	51.90	4.28%
<b>Total</b>	<b>1,213.61</b>	

### For Current Year

Category	Dispatch (GWh)	Percentage
CEB Hydro	2,051.3	27.32%
CEB Thermal Oil	940.1	12.52%
CEB Coal	3,028.3	40.34%
IPP Thermal	871.6	11.61%
SPP Wind	149.9	2.00%
CEB Wind	165.9	2.21%
SPP Solar	46.4	0.62%
SPP Solid Waste	38.5	0.51%
Mini Hydro	215.6	2.87%
<b>Total</b>	<b>7,507.4</b>	

## CEB owned Thermal Plant Dispatch

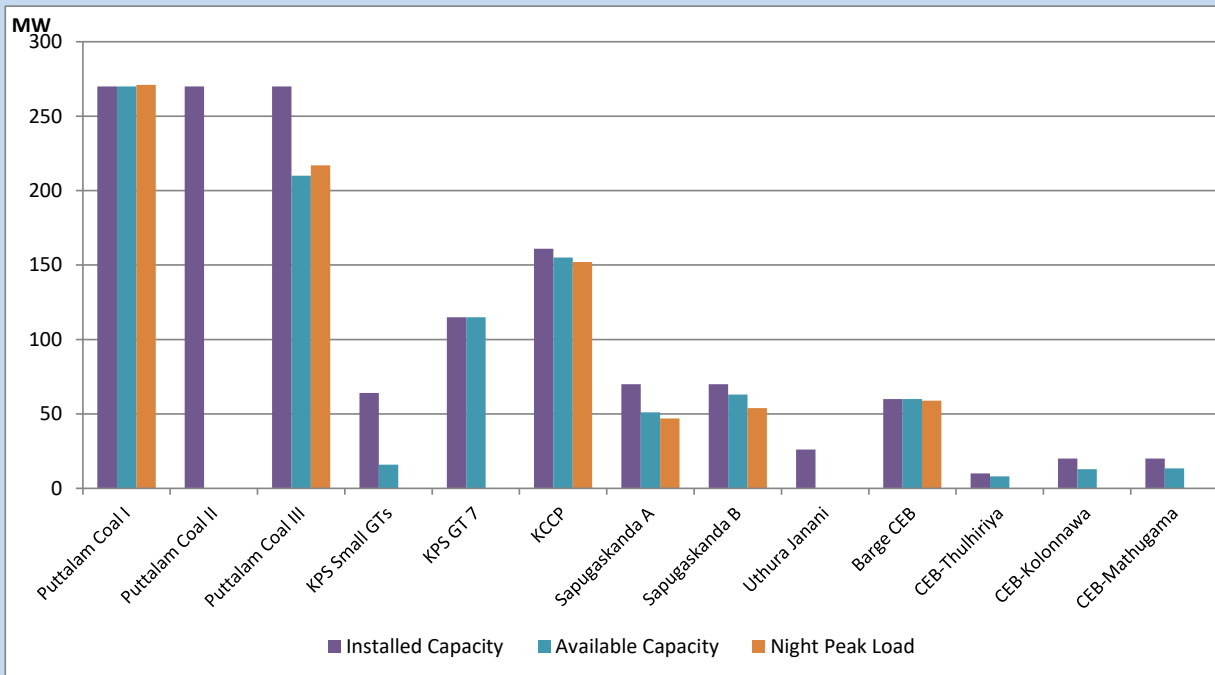
June 30, 2022



Available Generation is estimated based on plant availability at 6.00am on

July 1, 2022

## CEB owned Thermal Plant Loading at the Night Peak



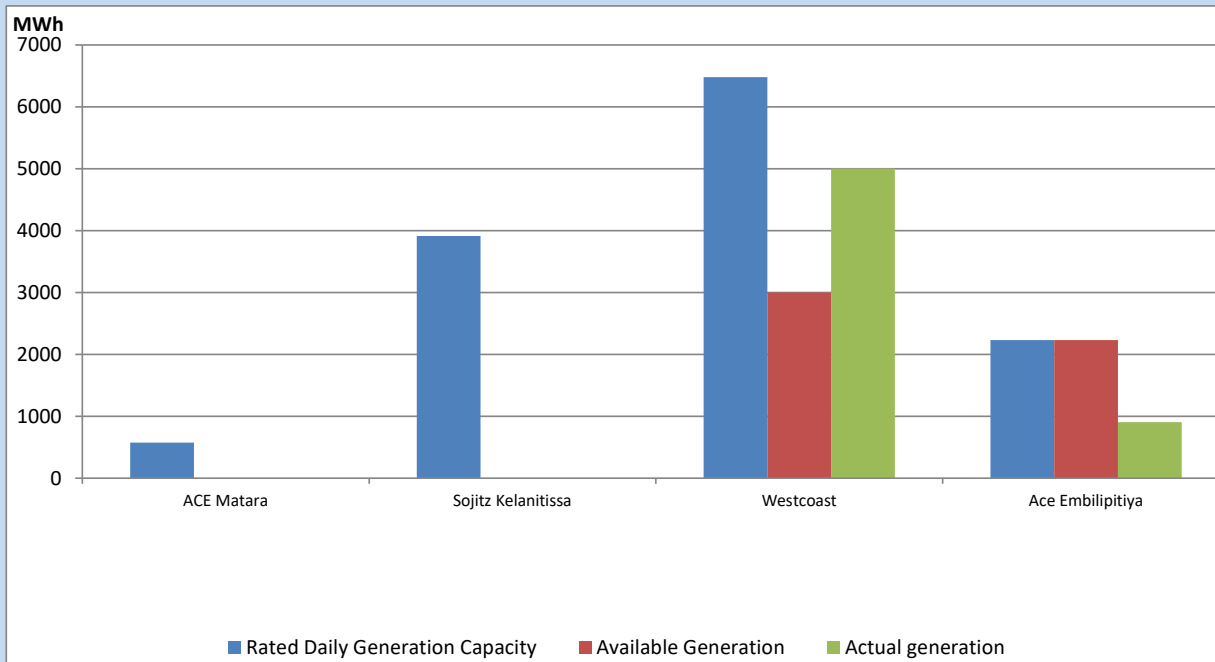
Note- Plant availability is recorded at 6.00 am on

July 1, 2022

## IPP owned Thermal Plant Dispatch

June 30, 2022

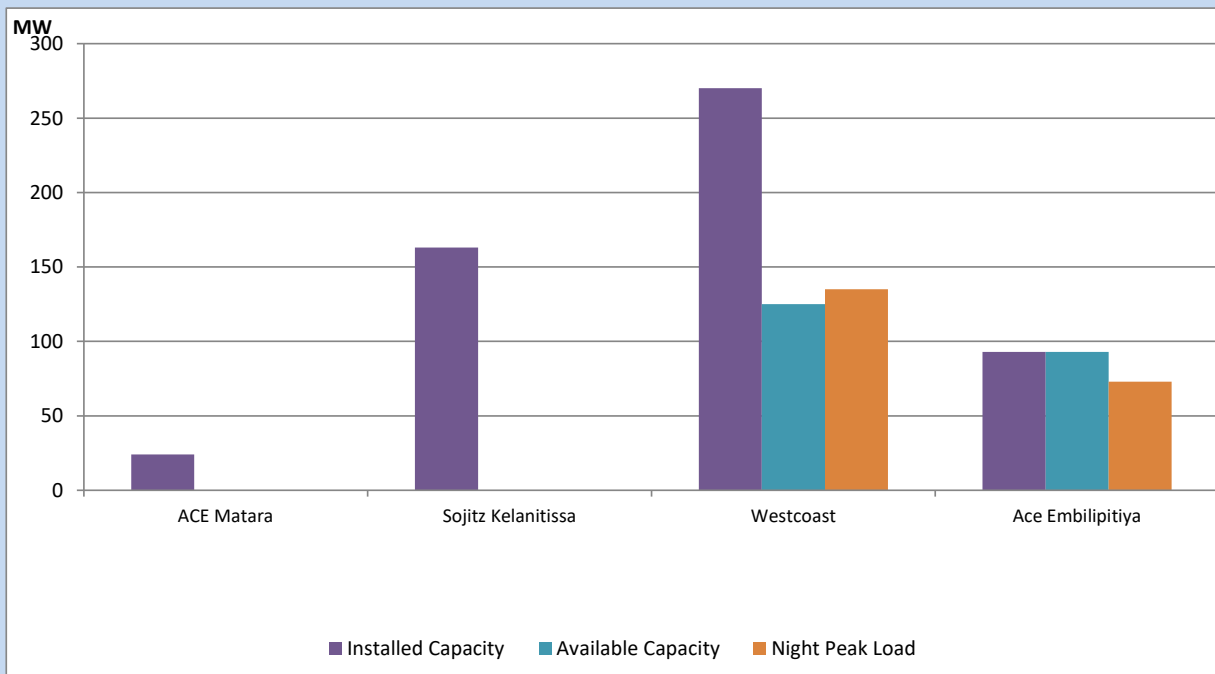
Asia Power, V Power Pallekale, Vpower Galle, V Power Horana, Vpower Hambantota, Vpower Valachchena and Altaqa Mahiyanganaya are not available due to expiration of PPAs



Available Generation is estimated based on plant availability at 6.00am on

July 1, 2022

## IPP owned Thermal Plant Loading at the Night Peak

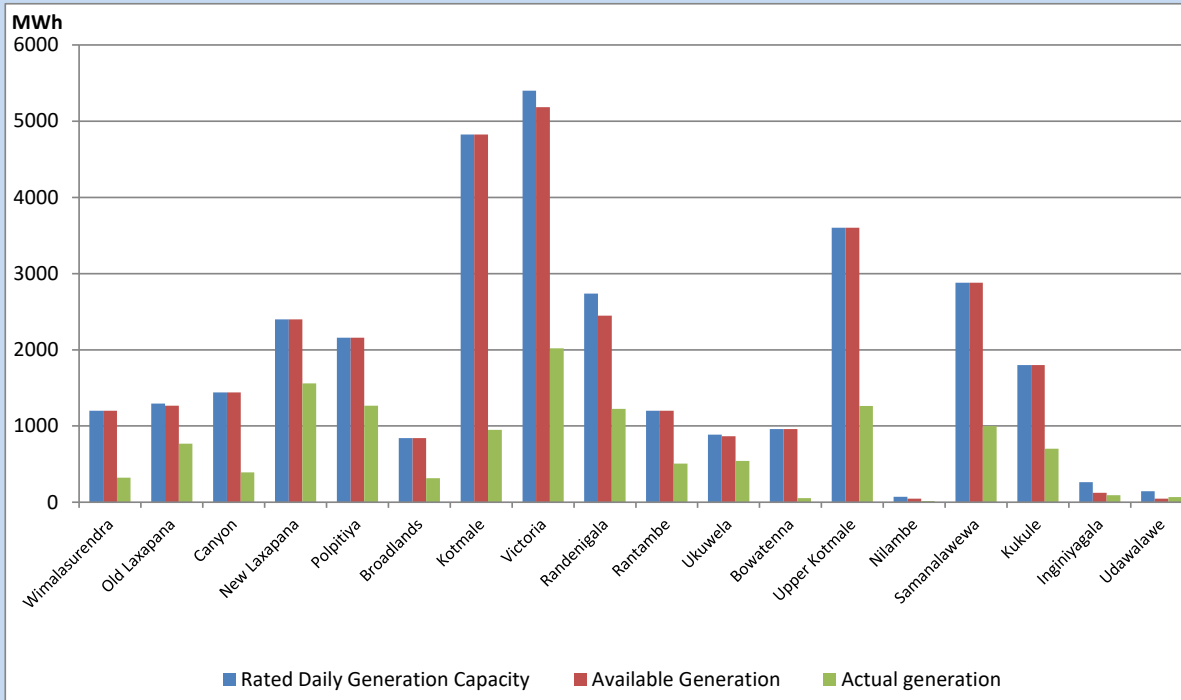


Note- Plant availability is recorded at 6.00 am on

July 1, 2022

## Major Hydro Plant Dispatch

June 30, 2022

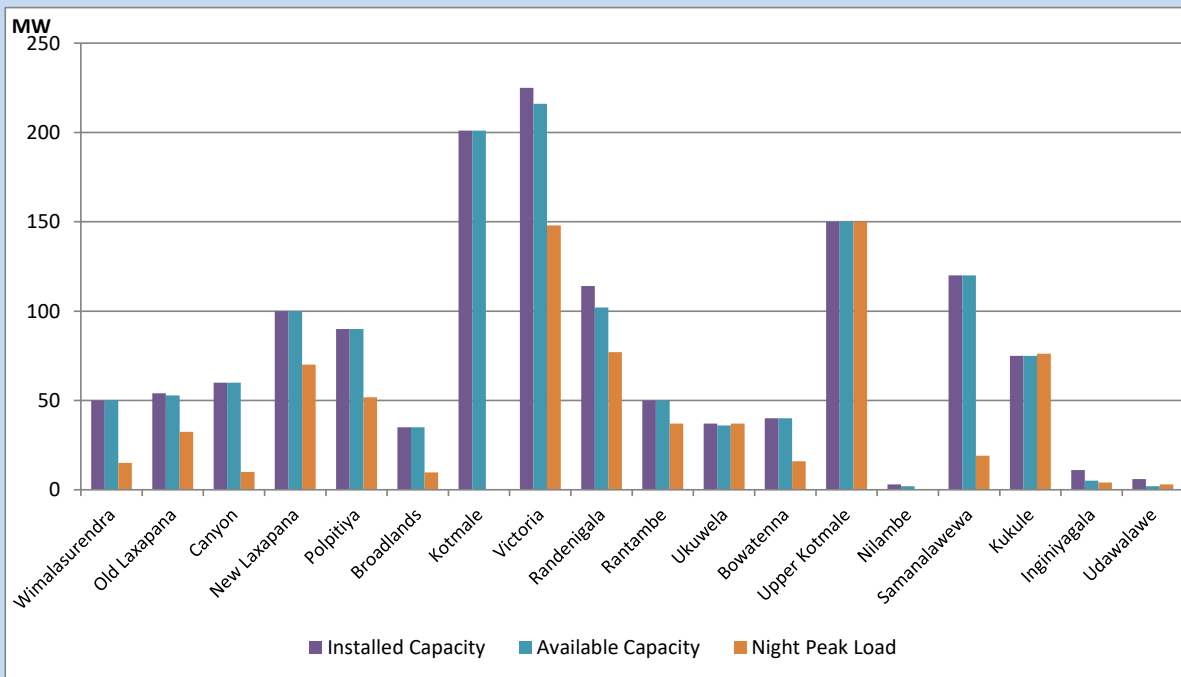


Available Generation is estimated based on plant availability at 6.00am on  
Broadlands power plant is operating in the Commissioning Stage

July 1, 2022

## Major Hydro Plant Loading at Night Peak

June 30, 2022



Note- Plant availability is recorded at 6.00 am on  
Broadlands power plant is operating in the Commissioning Stage

July 1, 2022

## Summary of Major Plant performance

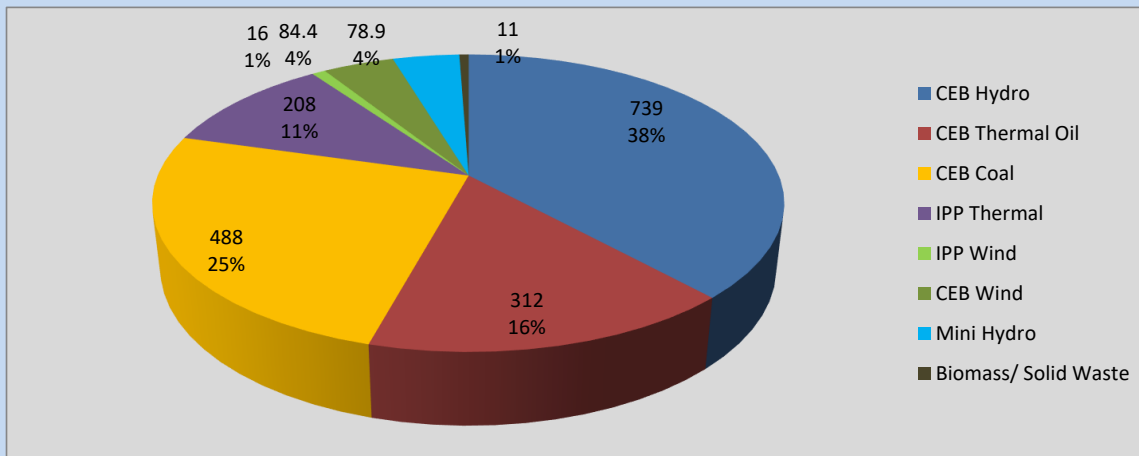
Plant	Installed Capacity	Plant Availability	Night peak Load	Plant Dispatch
	(MW)	(MW)	(MW)	(MWh)
Wimalasurendra	50	50	15	322
Old Laxapana	54	53	33	769
Canyon	60	60	10	393
New Laxapana	100	100	70	1,558
Polpitiya	90	90	52	1,266
Broadlands	35	35	10	314
Kotmale	201	201	0	950
Victoria	225	216	148	2,018
Randenigala	114	102	77	1,226
Rantambe	50	50	37	505
Ukuwela	37	36	37	540
Bowatenna	40	40	16	54
Upper Kotmale	150	150	150	1,262
Nilambe	3	2	0	16
Samanalawewa	120	120	19	997
Kukule	75	75	76	703
Inginiyagala	11	5	4	93
Udawalawe	6	2	3	67
Puttalam Coal I	270	270	271	6,483
Puttalam Coal II	270	0	0	0
Puttalam Coal III	270	210	217	5,200
KPS Small GTs	64	16	0	0
KPS GT 7	115	115	0	0
KCCP	161	155	152	3,712
Sapugaskanda A	70	51	47	1,121
Sapugaskanda B	70	63	54	1,263
Uthura Janani	26	0	0	0
Barge CEB	60	60	59	1,416
CEB-Thulhiriya	10	8	0	7
CEB-Kolonnawa	20	13	0	0
CEB-Mathugama	20	14	0	0
ACE Matara	24	0	0	0
Sojitz Kelanitissa	163	0	0	0
West Coast	270	125	135	5,002
ACE Embilipitiya	93	93	73	904
<b>Total</b>	<b>3,397</b>	<b>2,579</b>	<b>1,954</b>	<b>42,093</b>

Plant availability is the availability recorded at 6 am on

July 1, 2022

## Contribution to the Night Peak in MW

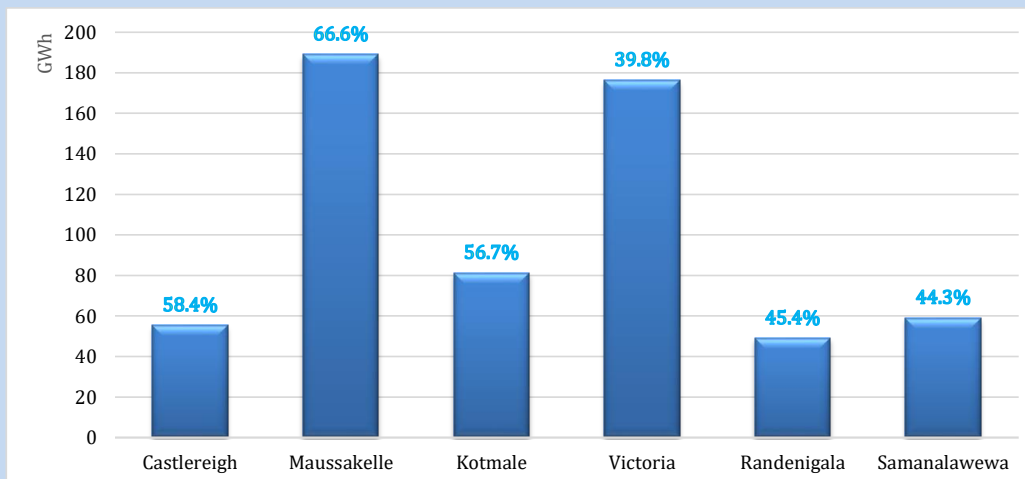
June 30, 2022



Night Peak*	1,937.4 MW
Day Peak	2,050.6 MW
Minimum Demand	1,444.9 MW

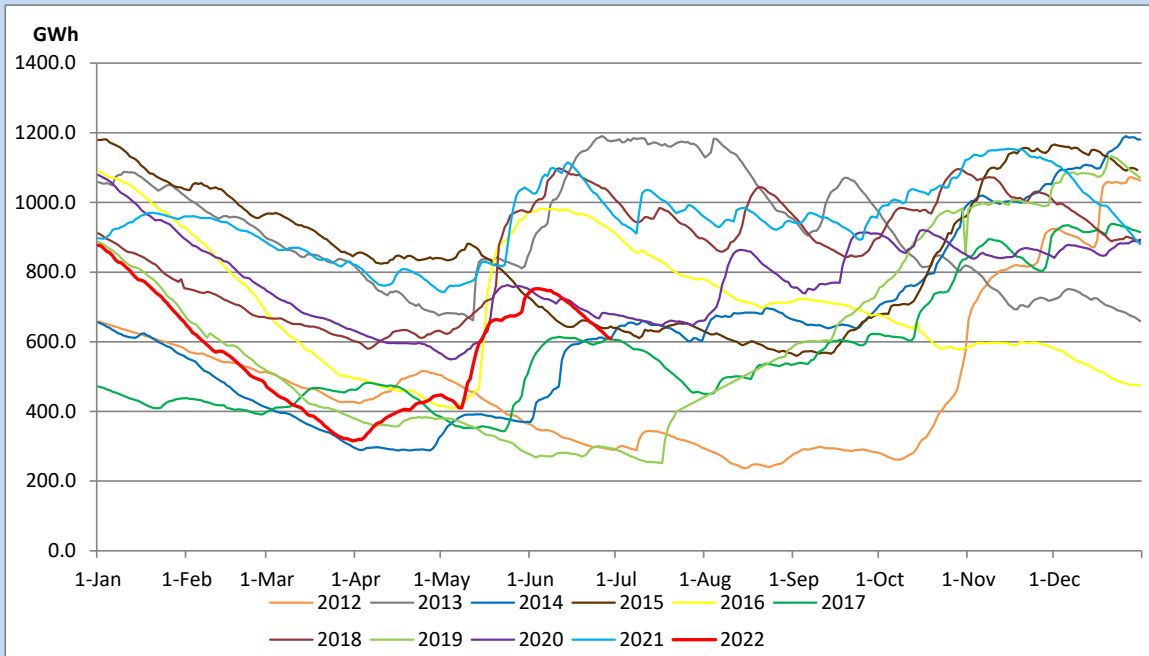
Above figures are excluding contribution from Roof Top Solar, 1MW solar, certain Wind plants and Mini Hydro plants

## Reservoir Levels - as at 06.00 Hr on July 1, 2022

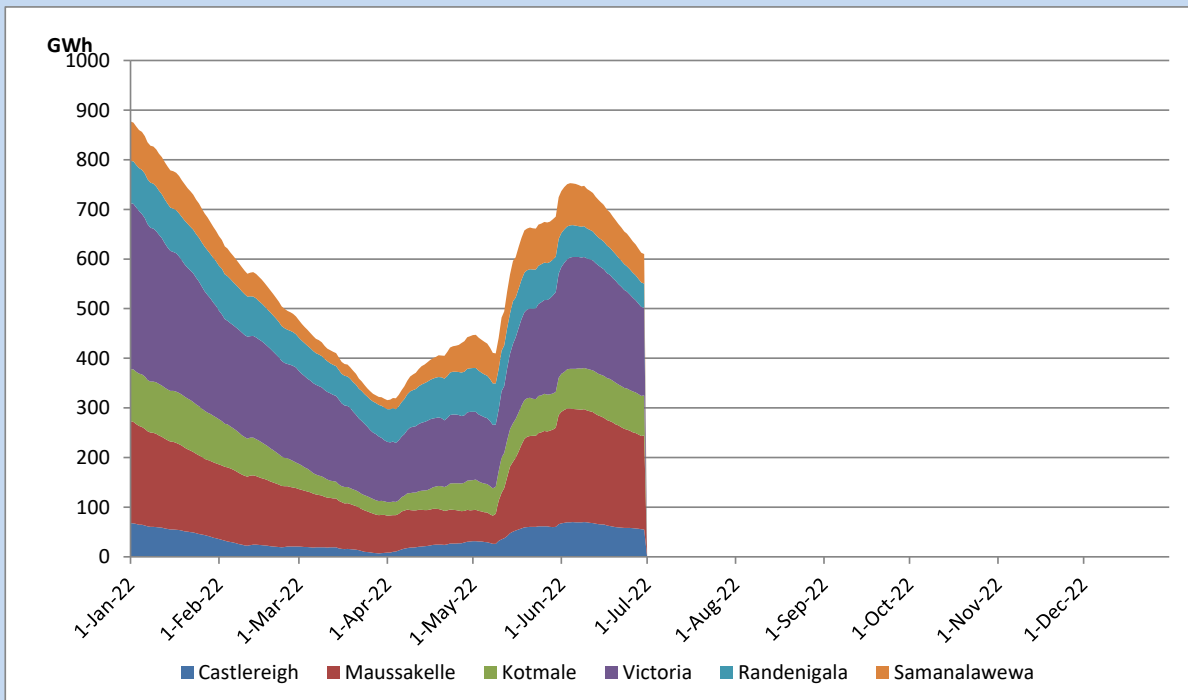


Total Reservoir Level	609.7 GWh
% of Total capacity	50.6%

## Comparison of Total Reservoir Storage Levels with Past Years

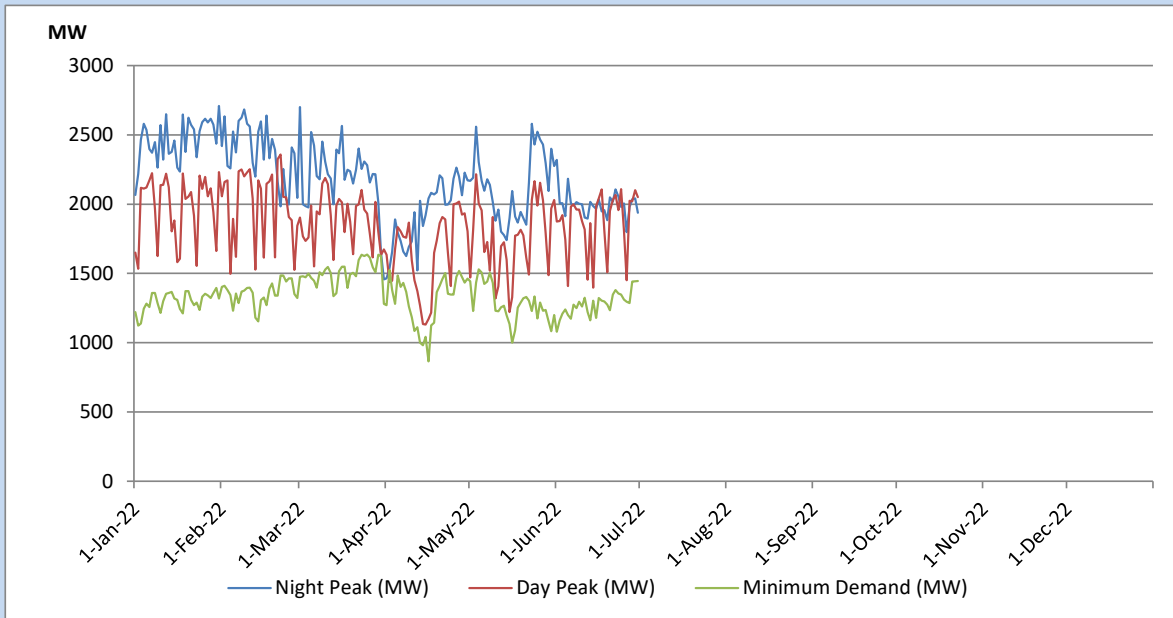


## Variation of Major Hydro Reservoir Levels in the current year (GWh)





## Variation of Demand during the current year

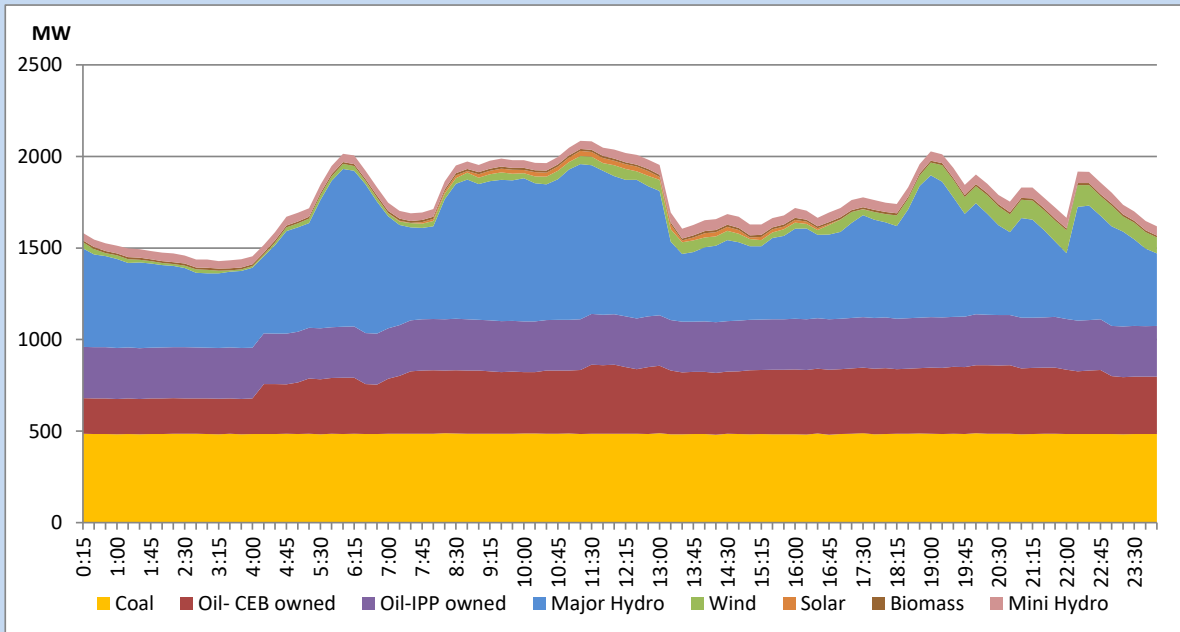


The above figures are excluding contribution from Roof Top Solar, 1MW solar, certain Wind plants and Mini Hydro plants

## Daily Load Curve of the Previous day

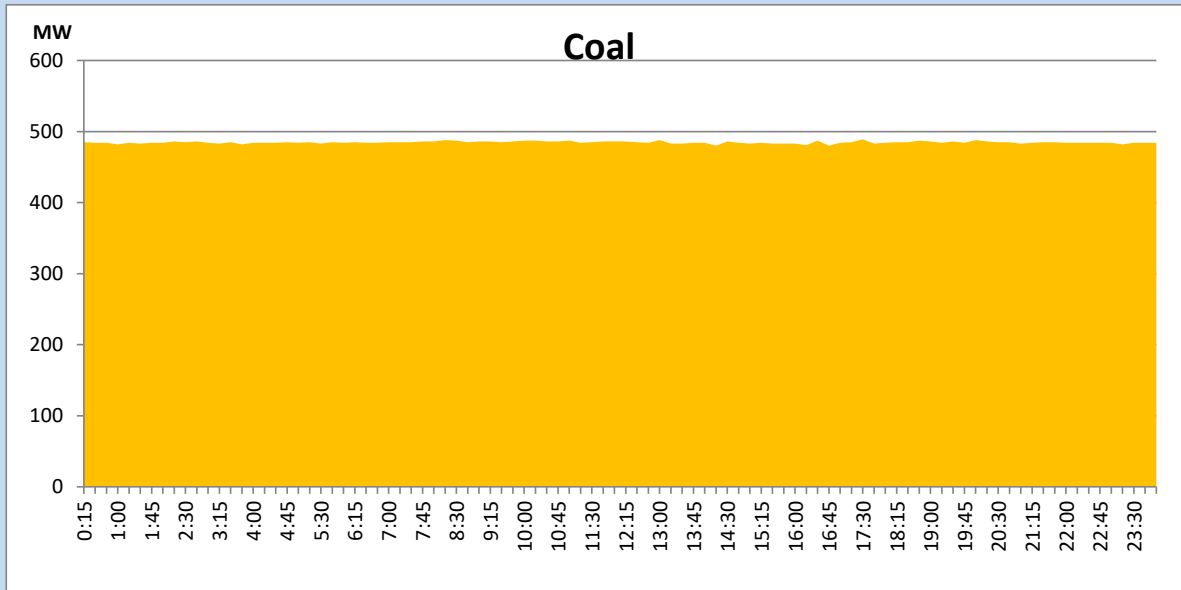
June 29, 2022

Solar and wind data is based on Telemetered Power Stations only



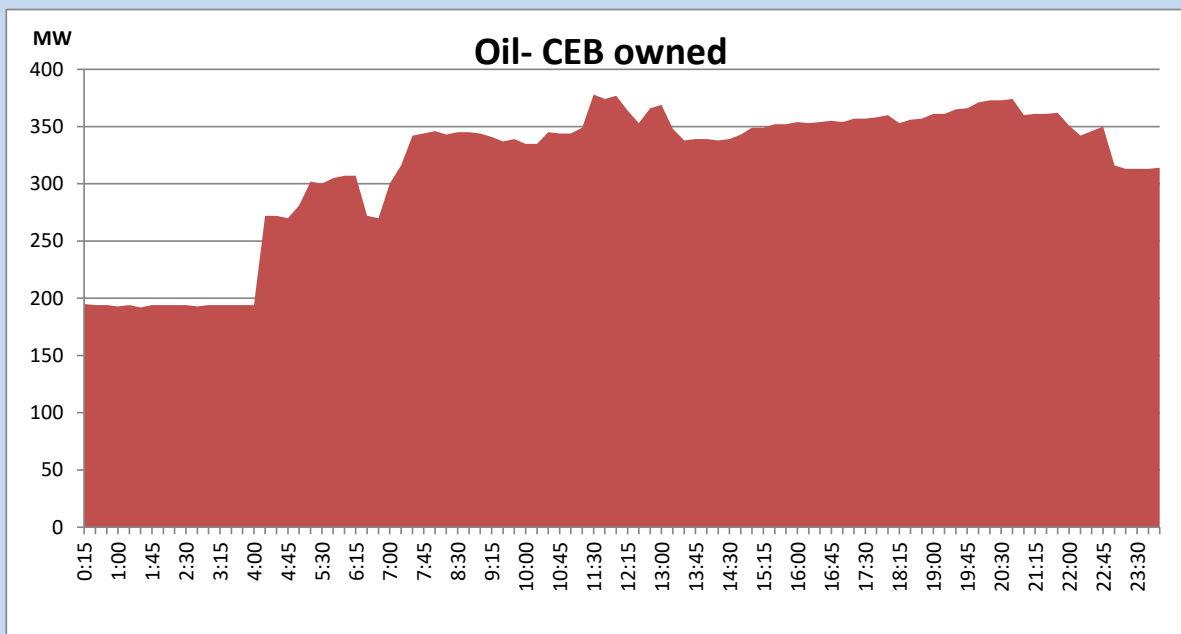
## Coal Generation during the Previous day

June 29, 2022



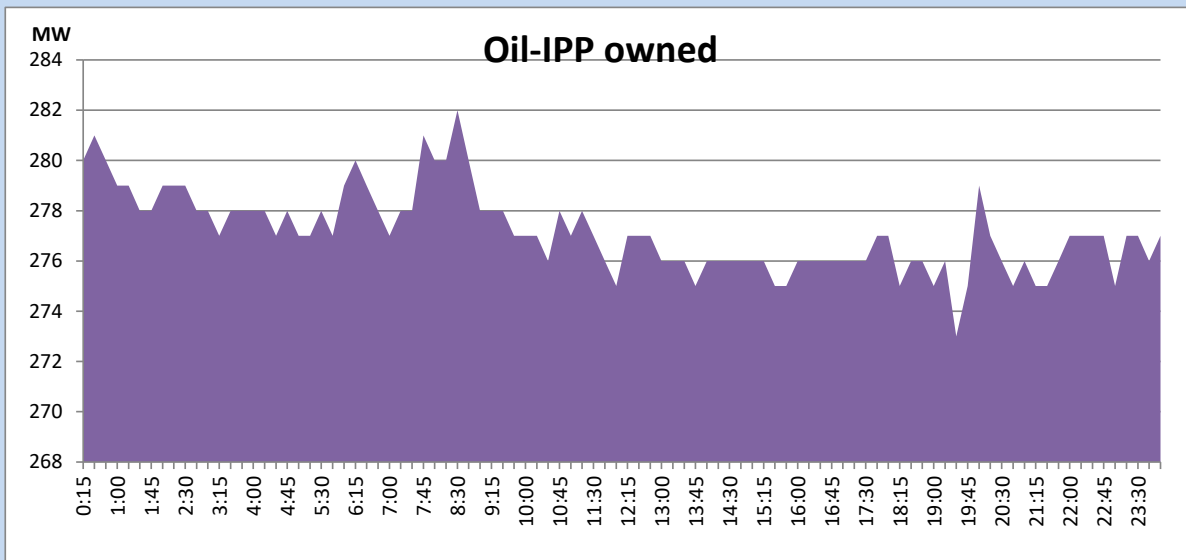
## CEB Oil Plant Generation during the Previous day

June 29, 2022



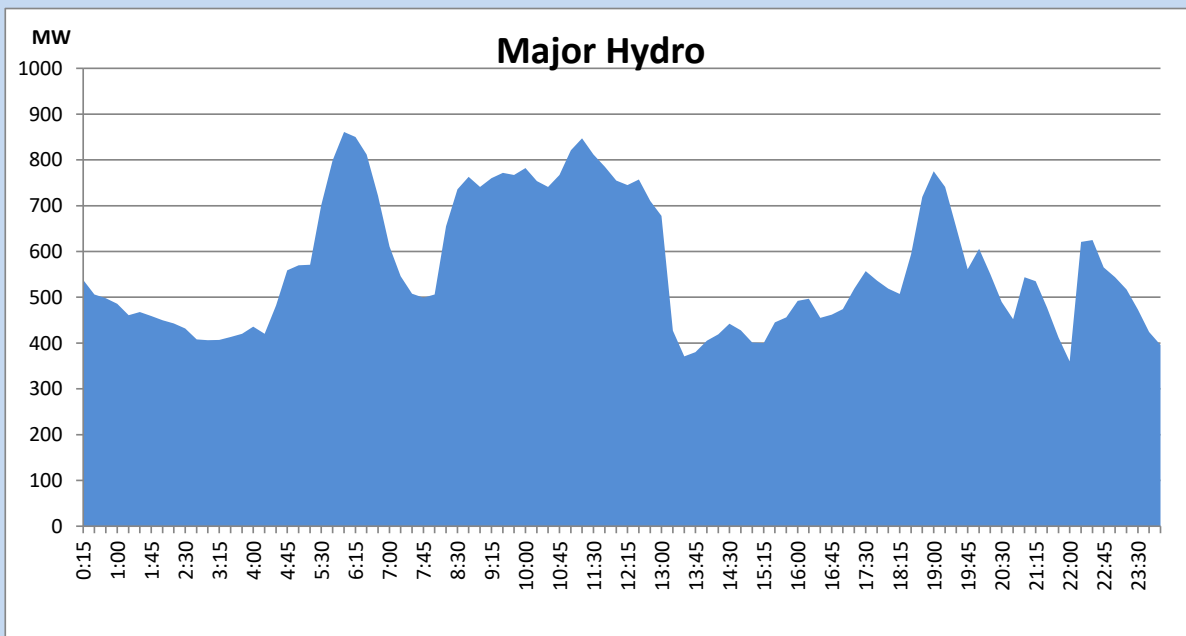
## IPP Oil Plant Generation during the Previous day

June 29, 2022



## Major Hydro Generation during the Previous day

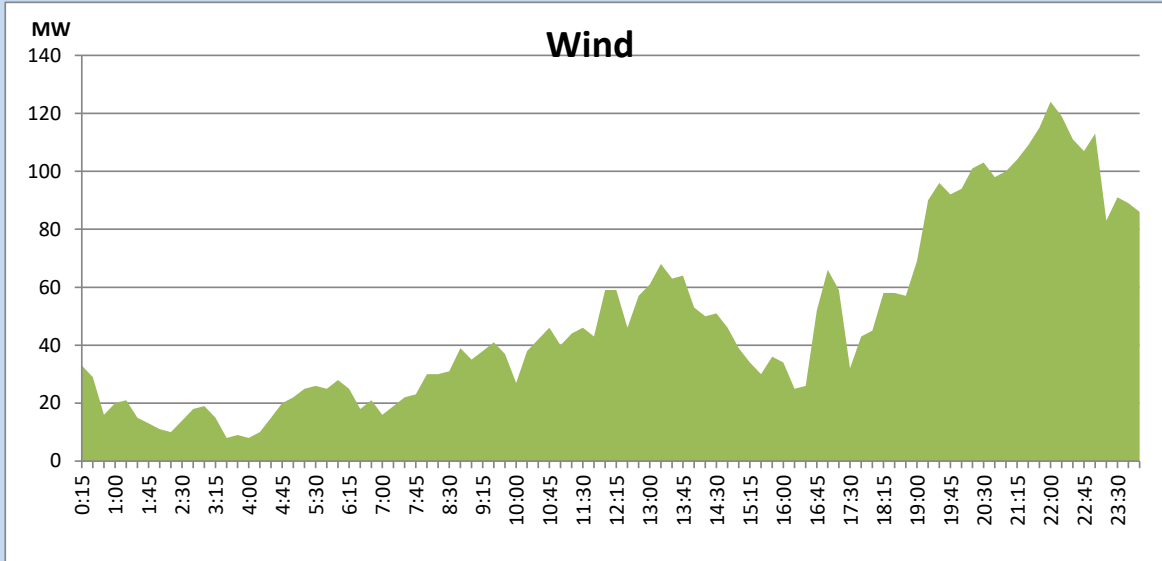
June 29, 2022



## Wind Generation during the Previous day

June 29, 2022

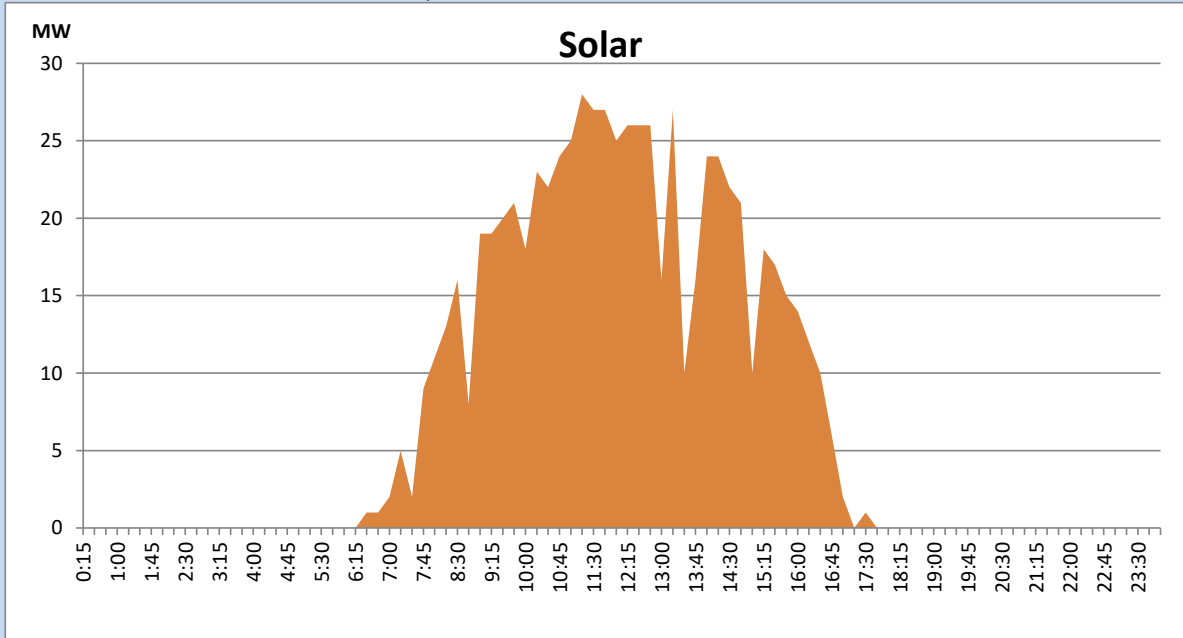
Based on Telemetered Power Stations only



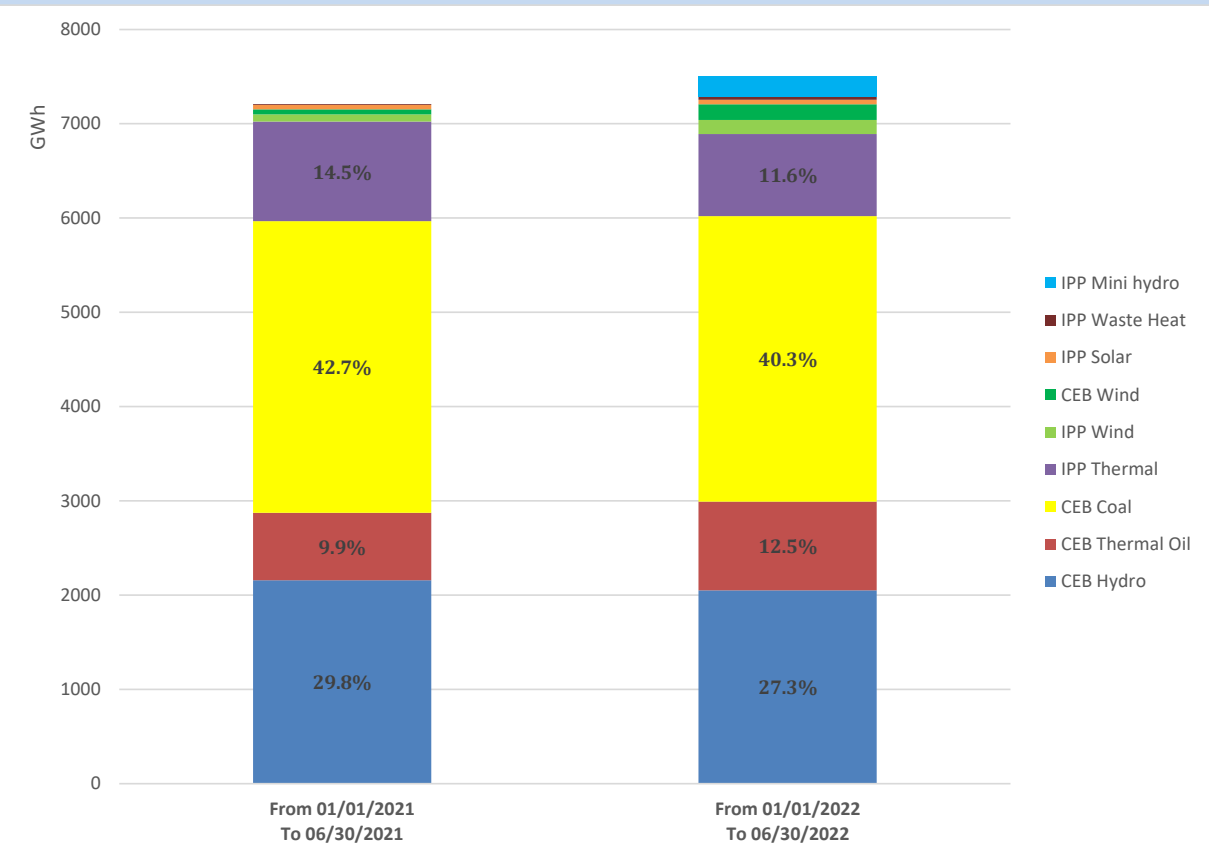
## Solar Generation during the Previous day

June 29, 2022

Based on Telemetered Power Stations only



# Cumulative Dispatch Comparison with Last Year



## Thermal Plant Fuel types

Power Station	Primary Fuel
CEB Thermal	
Sapugaskanda 1	Heavy Fuel
Sapugaskanda 2	Heavy Fuel
Kelanitissa Small Gas Turbines	Auto Diesel
GT 7 - Kelanitissa	Auto Diesel
Kelanitissa CCY	Naphtha or Diesel
Lakvijaya 1	Coal
Lakvijaya 2	Coal
Lakvijaya 3	Coal
Uthuru Janani	Heavy Fuel
Barge CEB	Heavy Fuel

Power Station	Primary Fuel
Private Thermal	
Sojitz - Kelanitissa	Auto Diesel
West Coast	Auto Diesel / Heavy Fuel
ACE Matara	Heavy Fuel
ACE Embilipitiya	Heavy Fuel

## Major Incidents during the day -as reported by CEB morning of

July 1, 2022

- 1) Rotational manual load shedding was carried out from 5:00 hrs to 8:00 hrs and 13:00hrs to 22:00hrs.
- 2) N' Laxapana unit 01 tripped twice at 8:35hrs & 13:13hrs, rejecting 40MW & 50MW, respectively from the system due to operation of upper guide bearing oil temperature high alarm. N'Laxapana unit 01 resumed generation at 10:42hrs and 14:09hrs, respectively.