

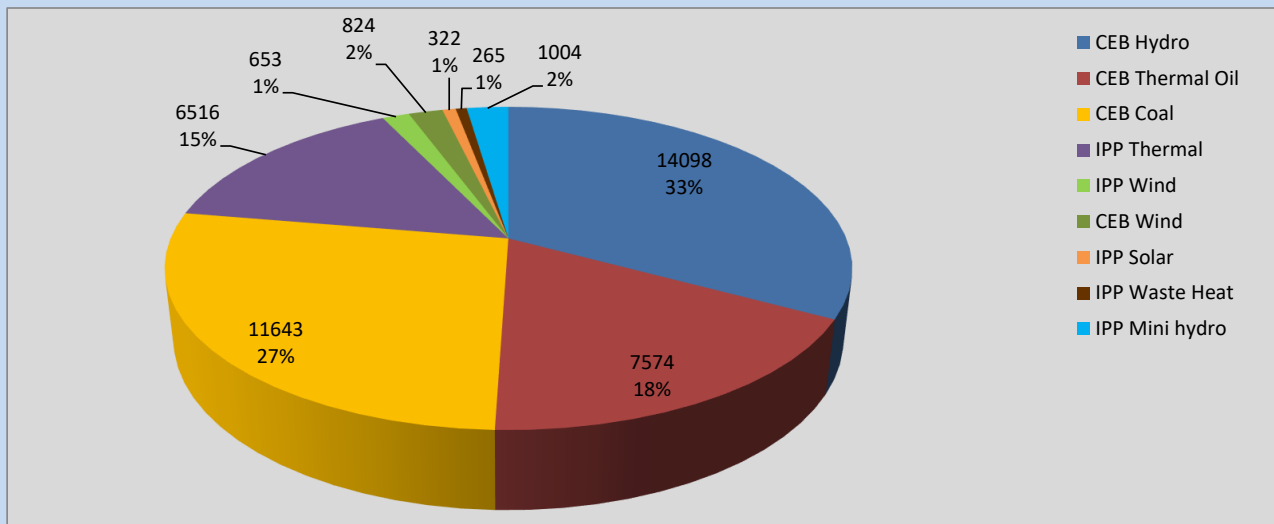
# Generation and Reservoirs Statistics

June 29, 2022



PUBLIC UTILITIES COMMISSION OF SRI LANKA

## Daily Generation Mix in MWh



**Total Generation** **42,899 MWh**

Note: Above data is excluding contribution from Roof Top Solar, 1MW Solar and certain Mini Hydro plants

## Cumulative Dispatch

Note: Following data is Excluding contribution from Roof Top Solar, 1MW solar and Mini Hydro plants

### For Current Month

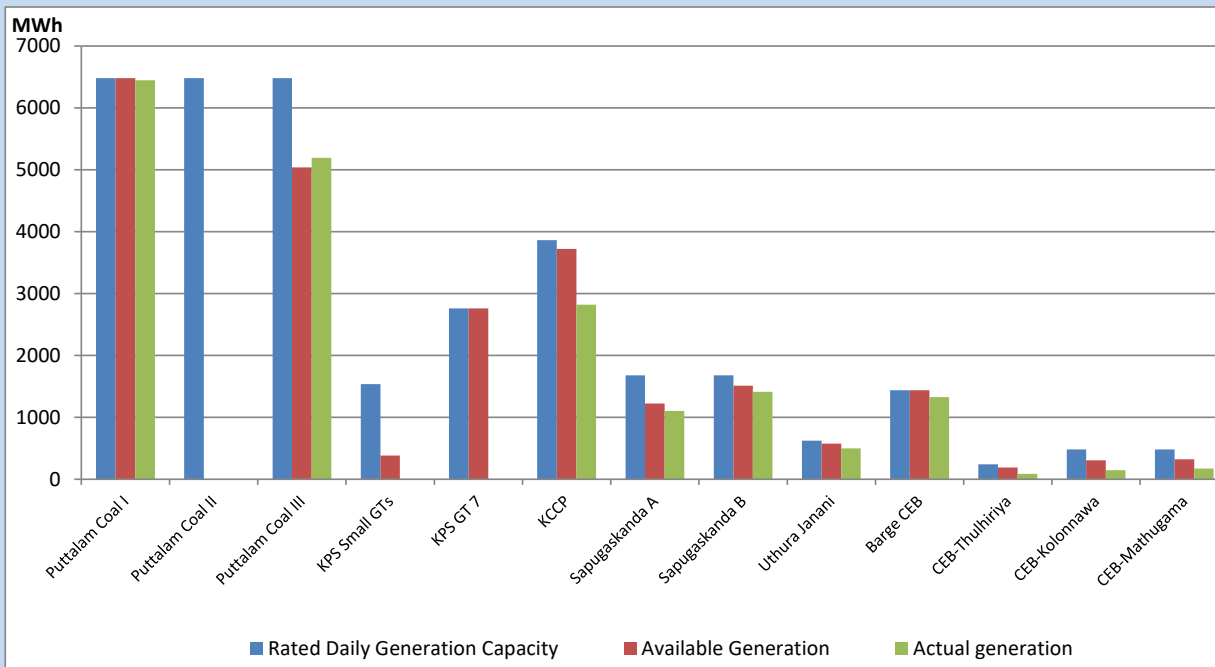
Category	Dispatch (GWh)	Percentage
CEB Hydro	429.25	36.64%
CEB Thermal Oil	74.11	6.33%
CEB Coal	450.30	38.44%
IPP Thermal	57.17	4.88%
SPP Wind	47.77	4.08%
CEB Wind	48.27	4.12%
SPP Solar	7.10	0.61%
SPP Solid Waste	6.94	0.59%
Mini Hydro	50.60	4.32%
<b>Total</b>	<b>1,171.51</b>	

### For Current Year

Category	Dispatch (GWh)	Percentage
CEB Hydro	2,038.3	27.30%
CEB Thermal Oil	932.6	12.49%
CEB Coal	3,016.6	40.41%
IPP Thermal	865.7	11.60%
SPP Wind	148.7	1.99%
CEB Wind	165.0	2.21%
SPP Solar	46.1	0.62%
SPP Solid Waste	38.2	0.51%
Mini Hydro	214.3	2.87%
<b>Total</b>	<b>7,465.3</b>	

## CEB owned Thermal Plant Dispatch

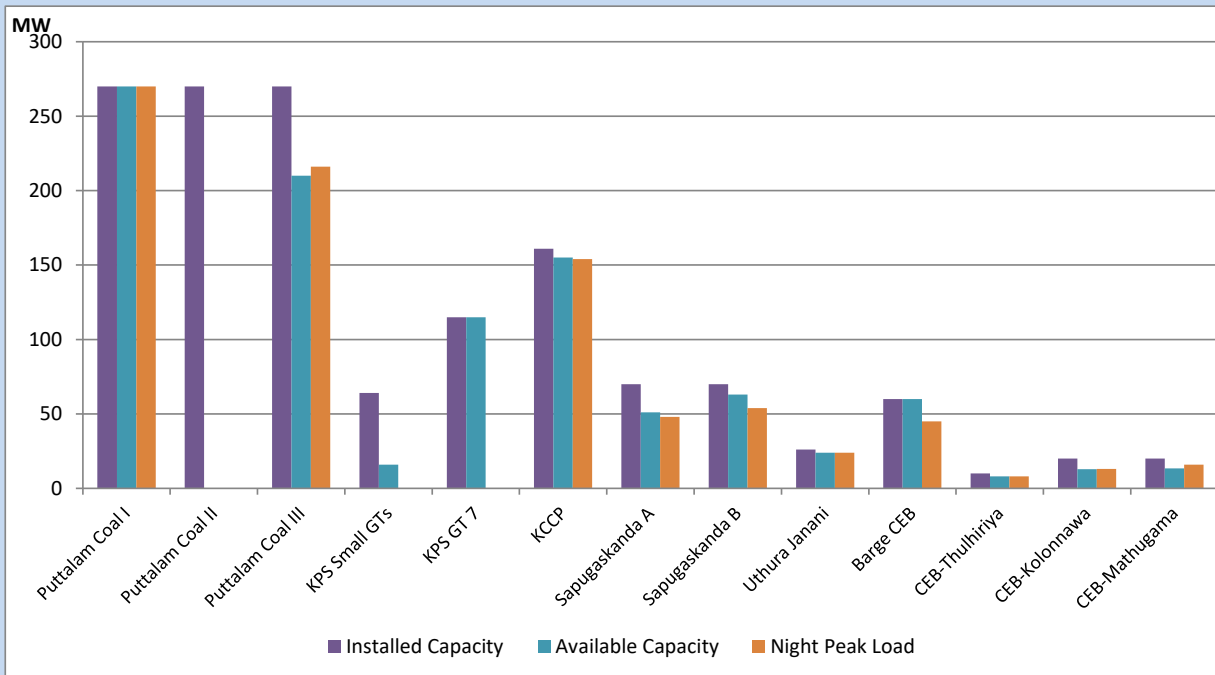
June 29, 2022



Available Generation is estimated based on plant availability at 6.00am on

June 30, 2022

## CEB owned Thermal Plant Loading at the Night Peak



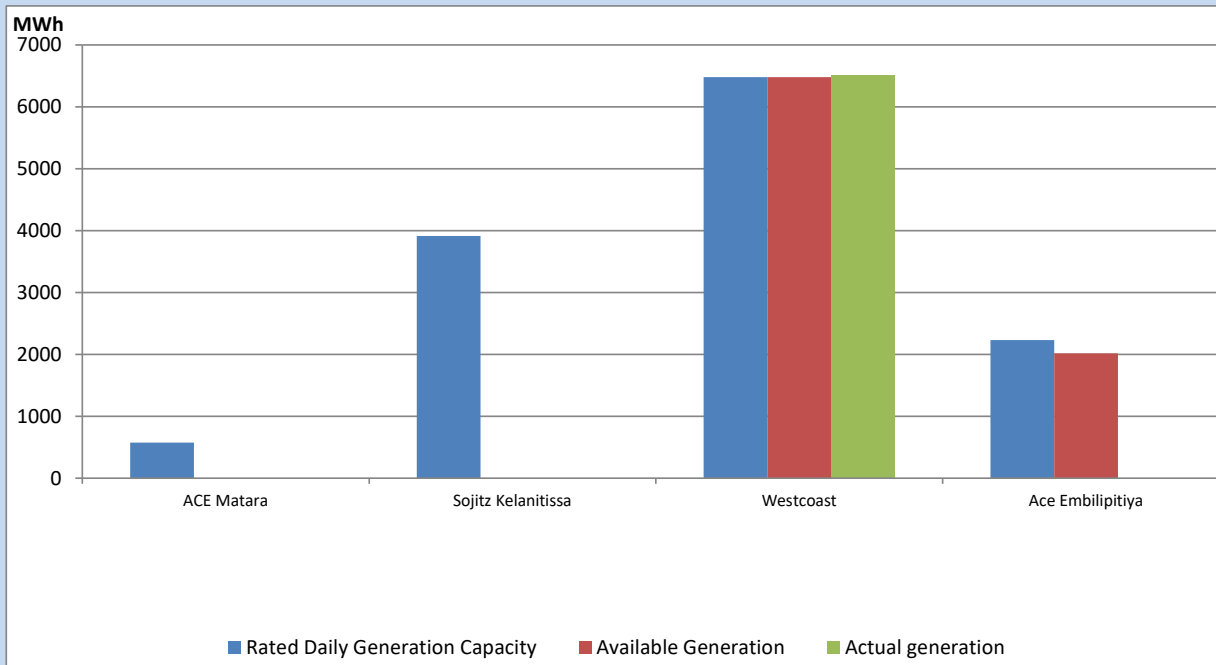
Note- Plant availability is recorded at 6.00 am on

June 30, 2022

## IPP owned Thermal Plant Dispatch

June 29, 2022

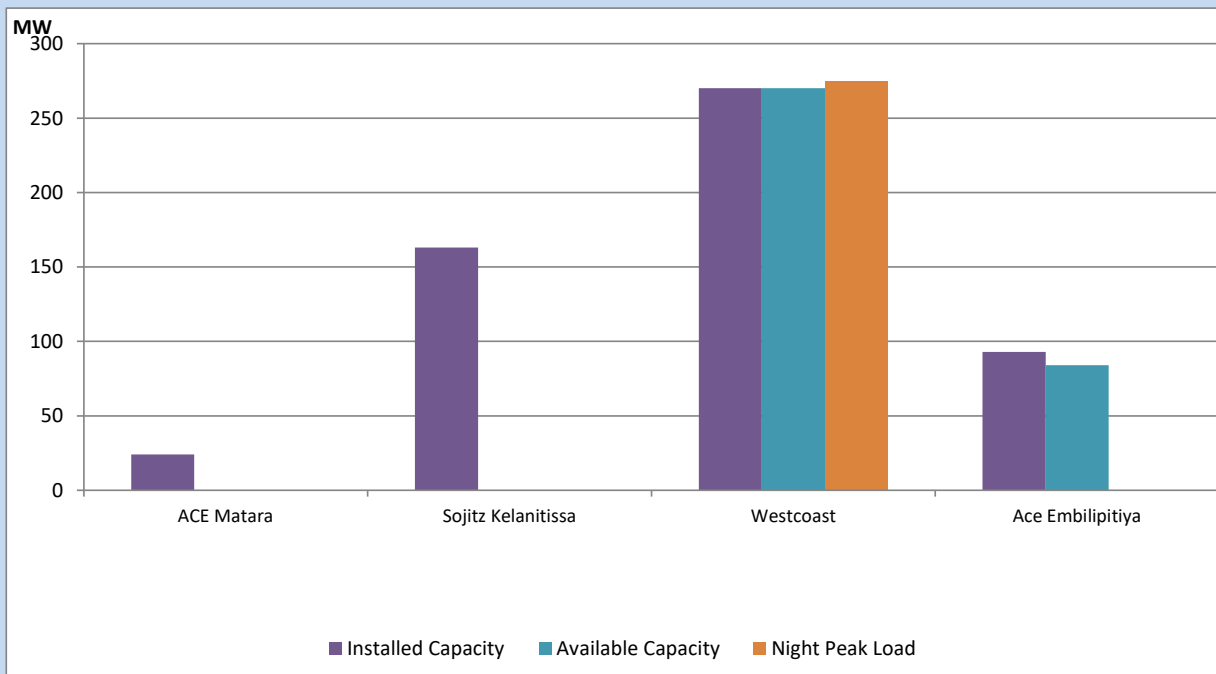
Asia Power, V Power Pallekale, Vpower Galle, V Power Horana, Vpower Hambantota, Vpower Valachchena and Altaqa Mahiyanganaya are not available due to expiration of PPAs



Available Generation is estimated based on plant availability at 6.00am on

June 30, 2022

## IPP owned Thermal Plant Loading at the Night Peak

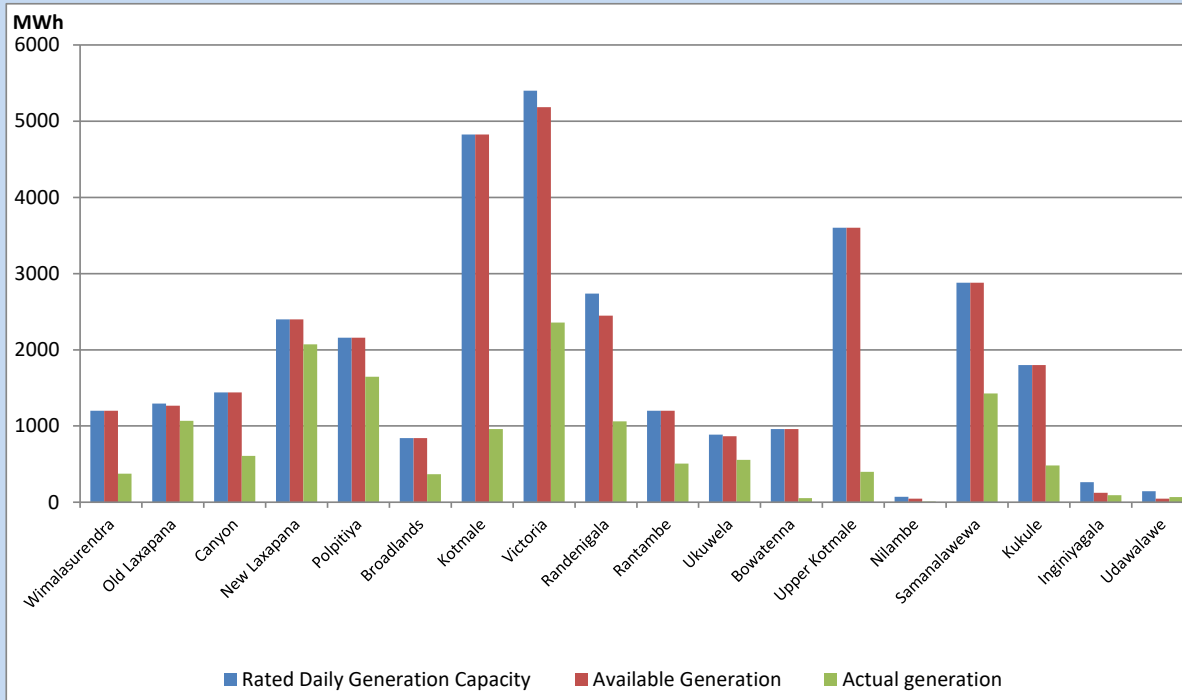


Note- Plant availability is recorded at 6.00 am on

June 30, 2022

## Major Hydro Plant Dispatch

June 29, 2022

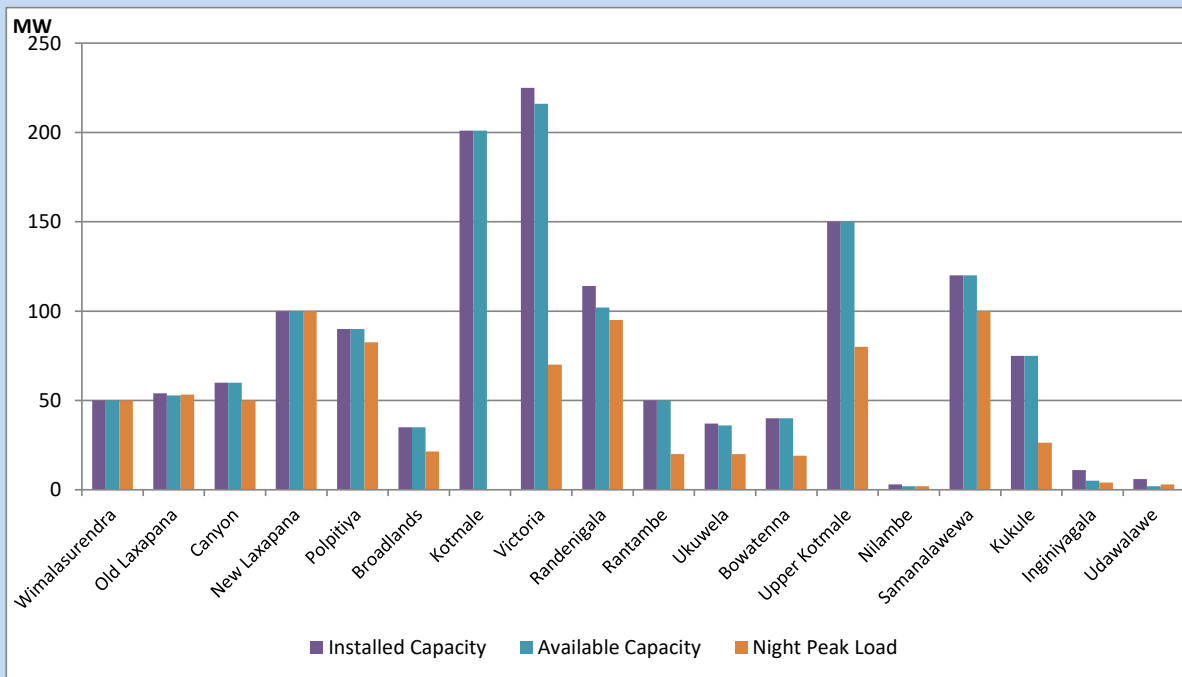


Available Generation is estimated based on plant availability at 6.00am on June 30, 2022  
 Broadlands power plant is operating in the Commissioning Stage

June 30, 2022

## Major Hydro Plant Loading at Night Peak

June 29, 2022



Note- Plant availability is recorded at 6.00 am on June 30, 2022  
 Broadlands power plant is operating in the Commissioning Stage

## Summary of Major Plant performance

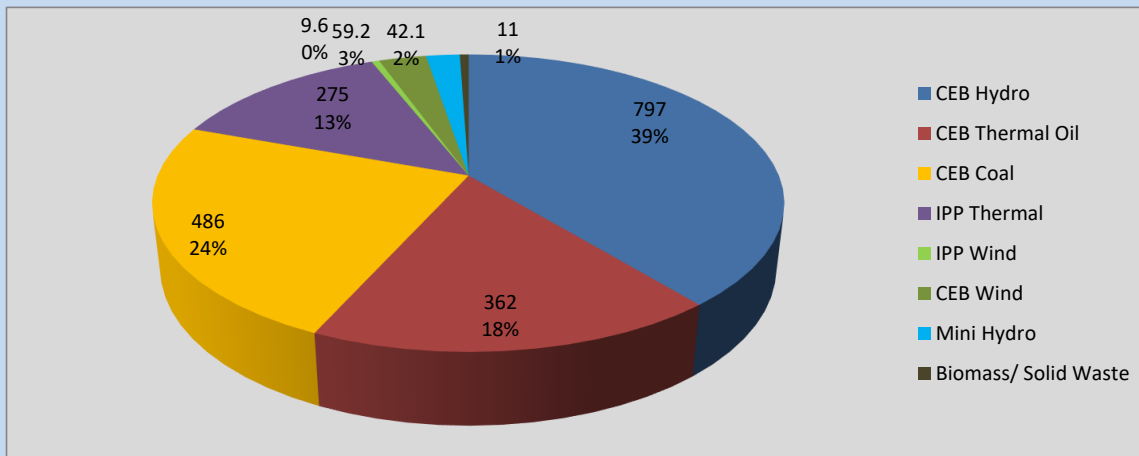
Plant	Installed Capacity	Plant Availability	Night peak Load	Plant Dispatch
	(MW)	(MW)	(MW)	(MWh)
Wimalasurendra	50	50	50	375
Old Laxapana	54	53	53	1,067
Canyon	60	60	50	607
New Laxapana	100	100	100	2,070
Polpitiya	90	90	83	1,646
Broadlands	35	35	21	366
Kotmale	201	201	0	960
Victoria	225	216	70	2,357
Randenigala	114	102	95	1,062
Rantambe	50	50	20	505
Ukuwela	37	36	20	557
Bowatenna	40	40	19	53
Upper Kotmale	150	150	80	399
Nilambe	3	2	2	7
Samanalawewa	120	120	100	1,426
Kukule	75	75	26	481
Inginiyagala	11	5	4	91
Udawalawe	6	2	3	69
Puttalam Coal I	270	270	270	6,448
Puttalam Coal II	270	0	0	0
Puttalam Coal III	270	210	216	5,195
KPS Small GTs	64	16	0	0
KPS GT 7	115	115	0	0
KCCP	161	155	154	2,821
Sapugaskanda A	70	51	48	1,102
Sapugaskanda B	70	63	54	1,413
Uthura Janani	26	24	24	500
Barge CEB	60	60	45	1,328
CEB-Thulhiriya	10	8	8	88
CEB-Kolonnawa	20	13	13	148
CEB-Mathugama	20	14	16	174
ACE Matara	24	0	0	0
Sojitz Kelanitissa	163	0	0	0
West Coast	270	270	275	6,516
ACE Embilipitiya	93	84	0	0
<b>Total</b>	<b>3,397</b>	<b>2,739</b>	<b>2,042</b>	<b>42,899</b>

Plant availability is the availability recorded at 6 am on

June 30, 2022

## Contribution to the Night Peak in MW

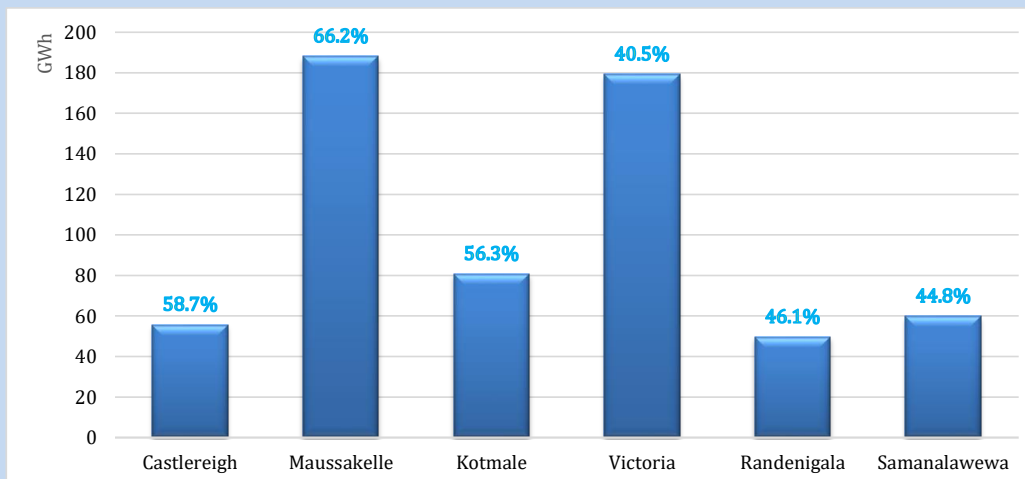
June 29, 2022



Night Peak*	2,041.5 MW
Day Peak	2,099.9 MW
Minimum Demand	1,442.9 MW

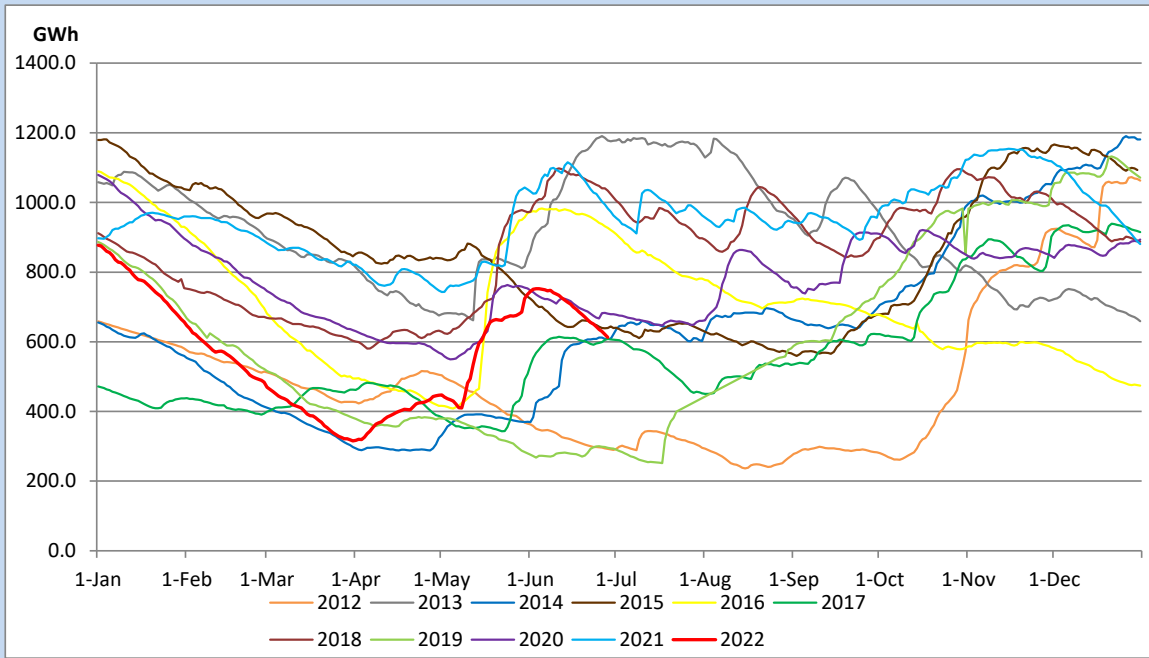
Above figures are excluding contribution from Roof Top Solar, 1MW solar, certain Wind plants and Mini Hydro plants

## Reservoir Levels - as at 06.00 Hr on June 30, 2022

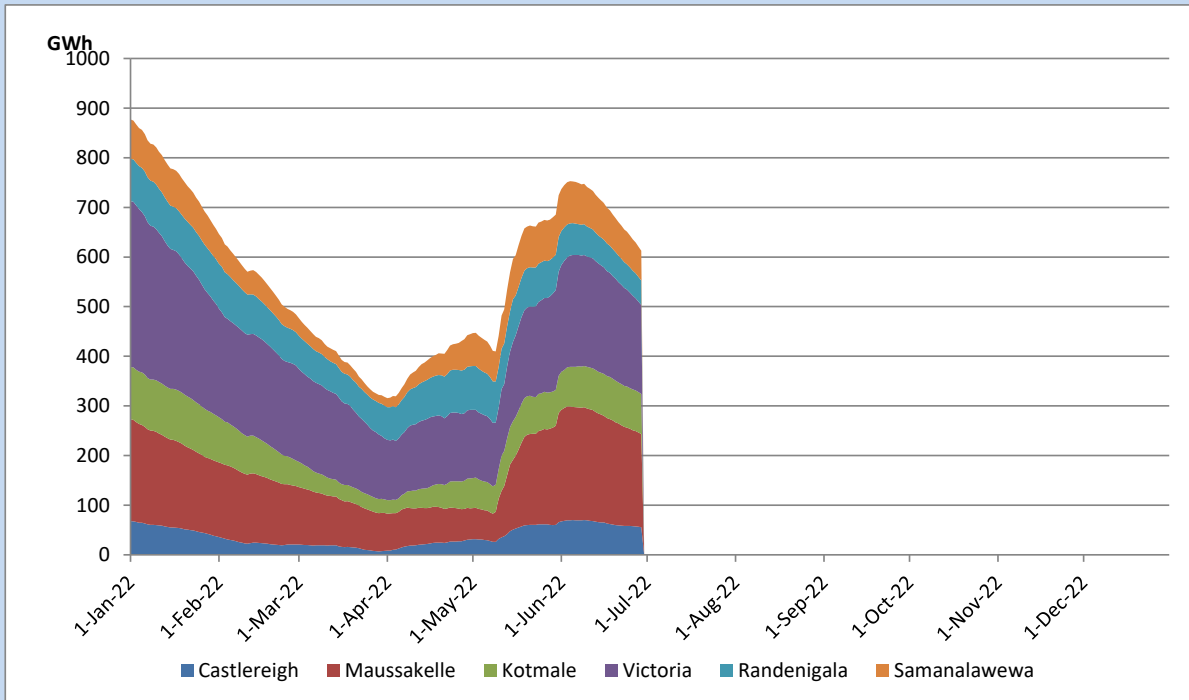


Total Reservoir Level	612.5 GWh
% of Total capacity	50.8%

## Comparison of Total Reservoir Storage Levels with Past Years

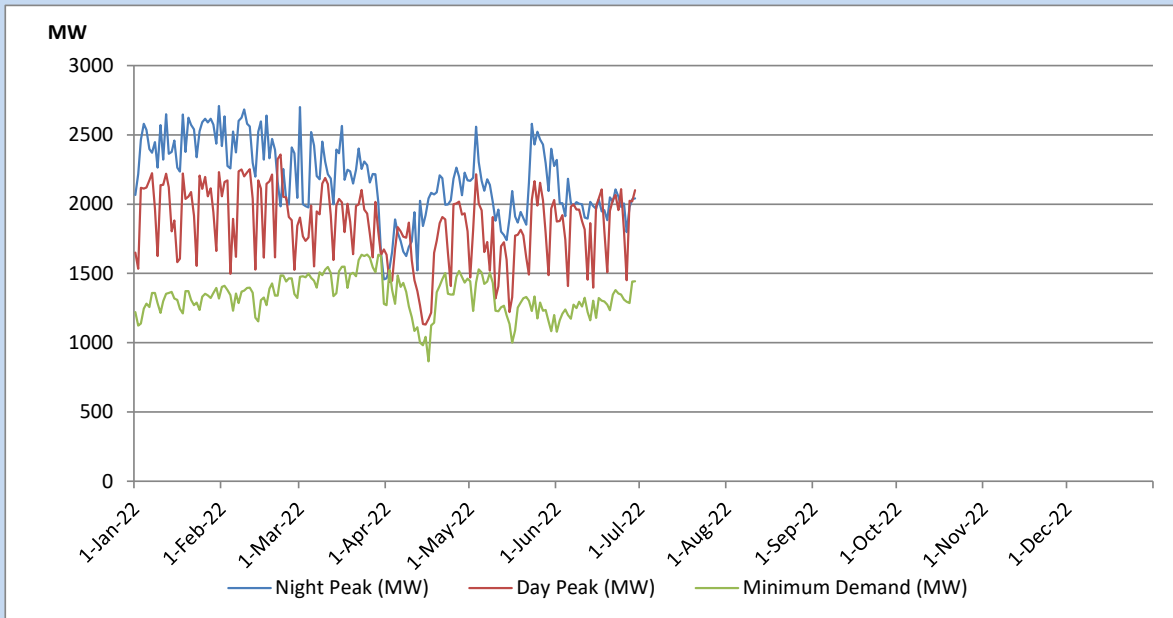


## Variation of Major Hydro Reservoir Levels in the current year (GWh)





## Variation of Demand during the current year

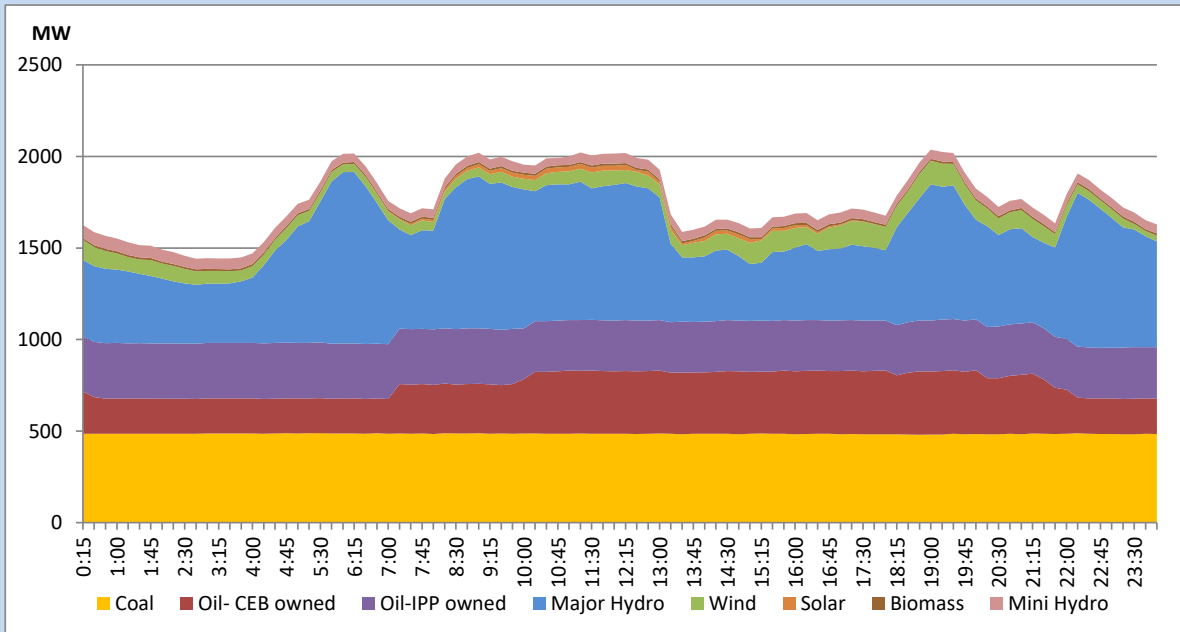


The above figures are excluding contribution from Roof Top Solar, 1MW solar, certain Wind plants and Mini Hydro plants

## Daily Load Curve of the Previous day

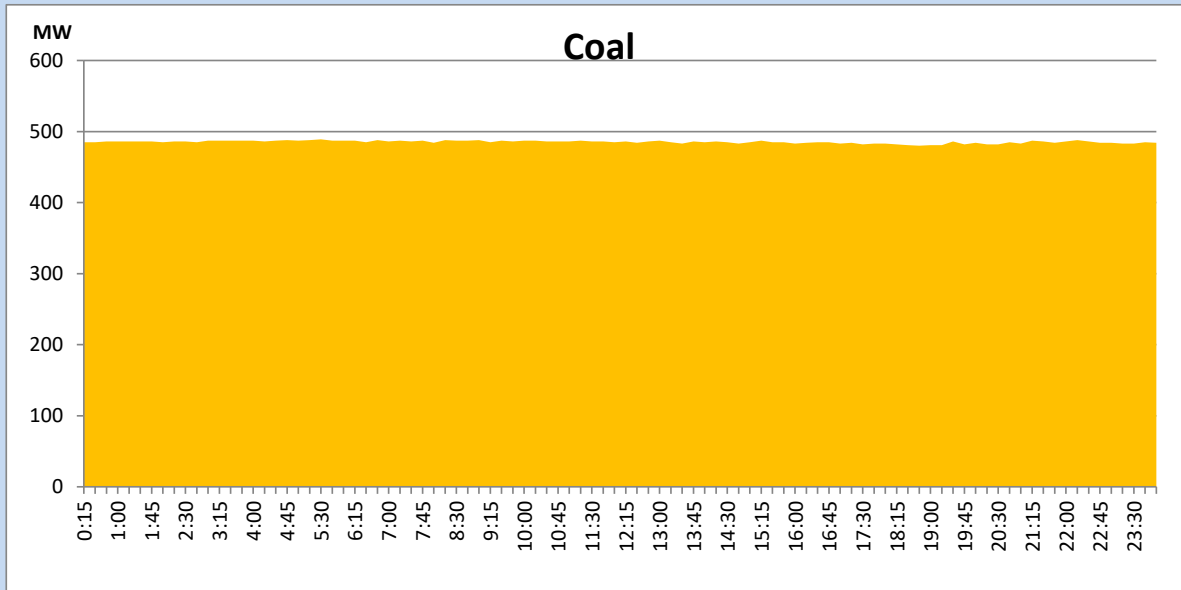
June 28, 2022

Solar and wind data is based on Telemetered Power Stations only



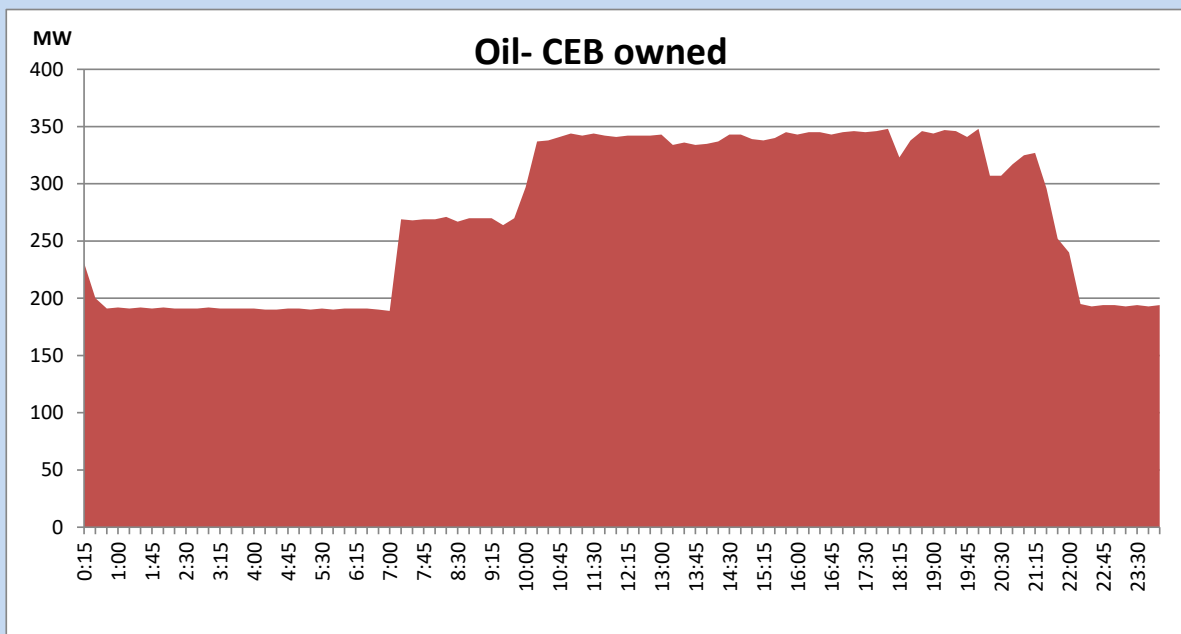
## Coal Generation during the Previous day

June 28, 2022



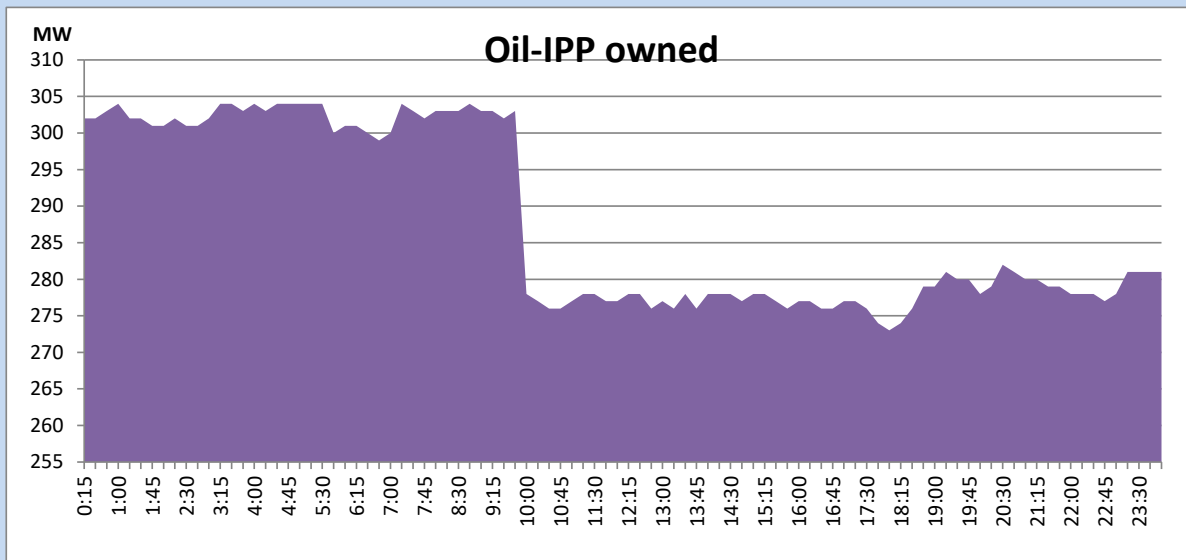
## CEB Oil Plant Generation during the Previous day

June 28, 2022



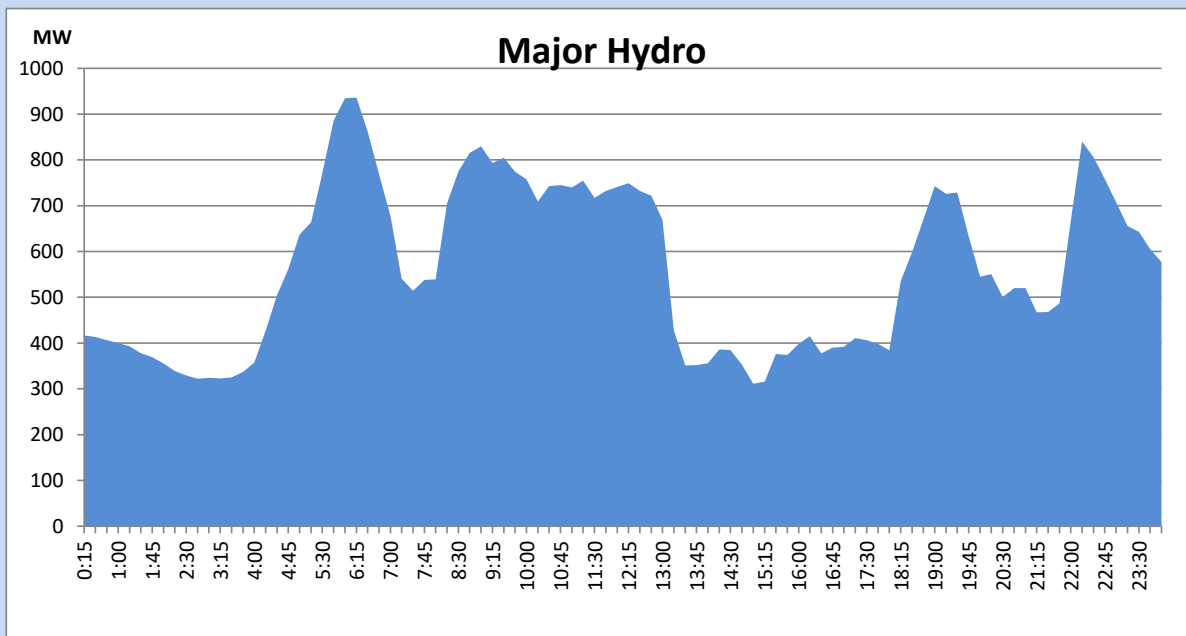
## IPP Oil Plant Generation during the Previous day

June 28, 2022



## Major Hydro Generation during the Previous day

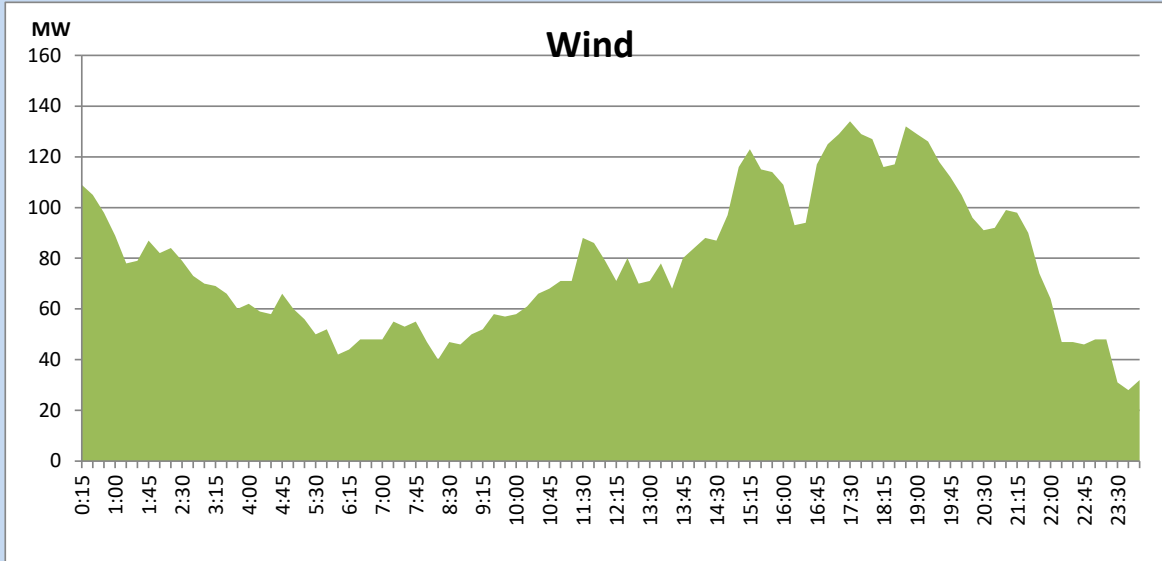
June 28, 2022



## Wind Generation during the Previous day

June 28, 2022

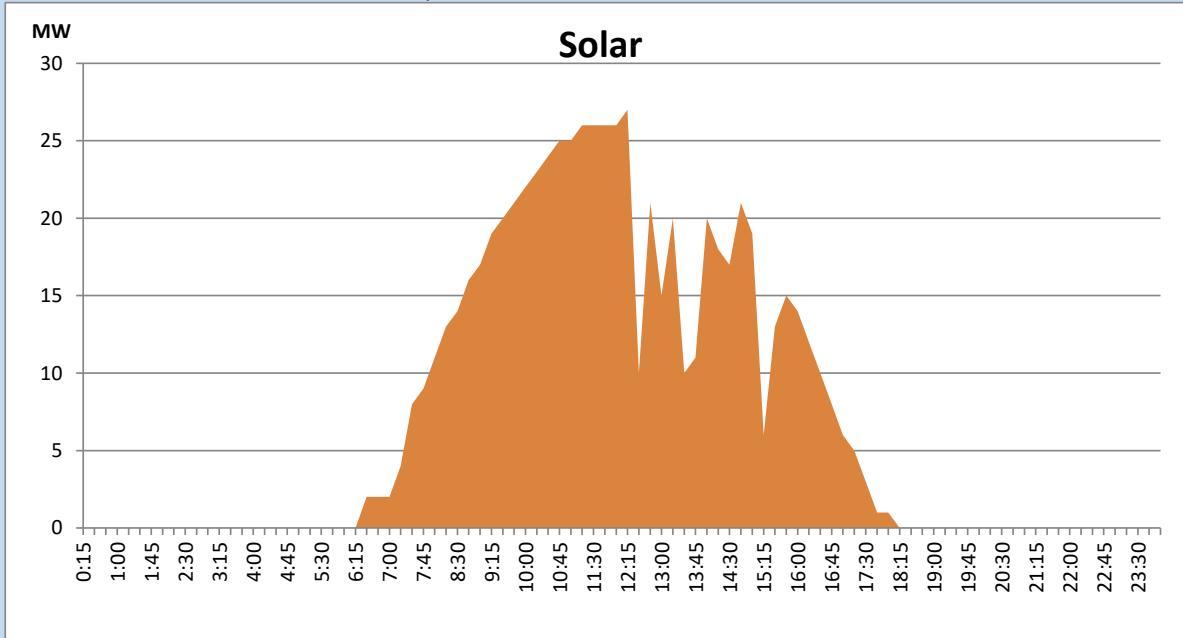
Based on Telemetered Power Stations only



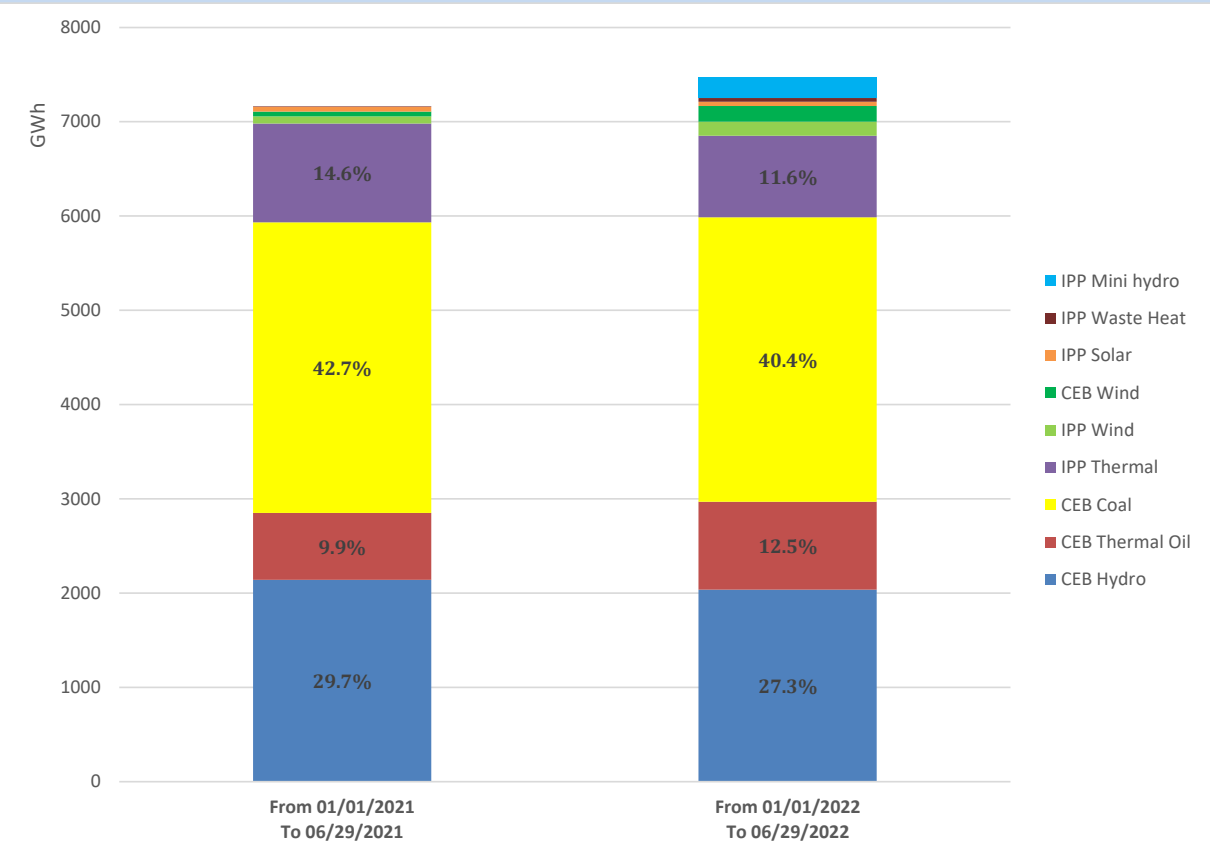
## Solar Generation during the Previous day

June 28, 2022

Based on Telemetered Power Stations only



# Cumulative Dispatch Comparison with Last Year



## Thermal Plant Fuel types

Power Station	Primary Fuel
CEB Thermal	
Sapugaskanda 1	Heavy Fuel
Sapugaskanda 2	Heavy Fuel
Kelanitissa Small Gas Turbines	Auto Diesel
GT 7 - Kelanitissa	Auto Diesel
Kelanitissa CCY	Naphtha or Diesel
Lakvijaya 1	Coal
Lakvijaya 2	Coal
Lakvijaya 3	Coal
Uthuru Janani	Heavy Fuel
Barge CEB	Heavy Fuel

Power Station	Primary Fuel
Private Thermal	
Sojitz - Kelanitissa	Auto Diesel
West Coast	Auto Diesel / Heavy Fuel
ACE Matara	Heavy Fuel
ACE Embilipitiya	Heavy Fuel

## Major Incidents during the day -as reported by CEB morning of

June 30, 2022

- 1) Rotational manual load shedding was carried out from 5:00 hrs to 8:00 hrs and 13:00hrs to 22:00hrs.
- 2) Uthuru Janani made forced shutdown at 21:52 hrs due to lack of fuel.
- 3) Putt-N/chilaw cct 02 tripped at 9:25 hrs and restored at 9:30 hrs.