

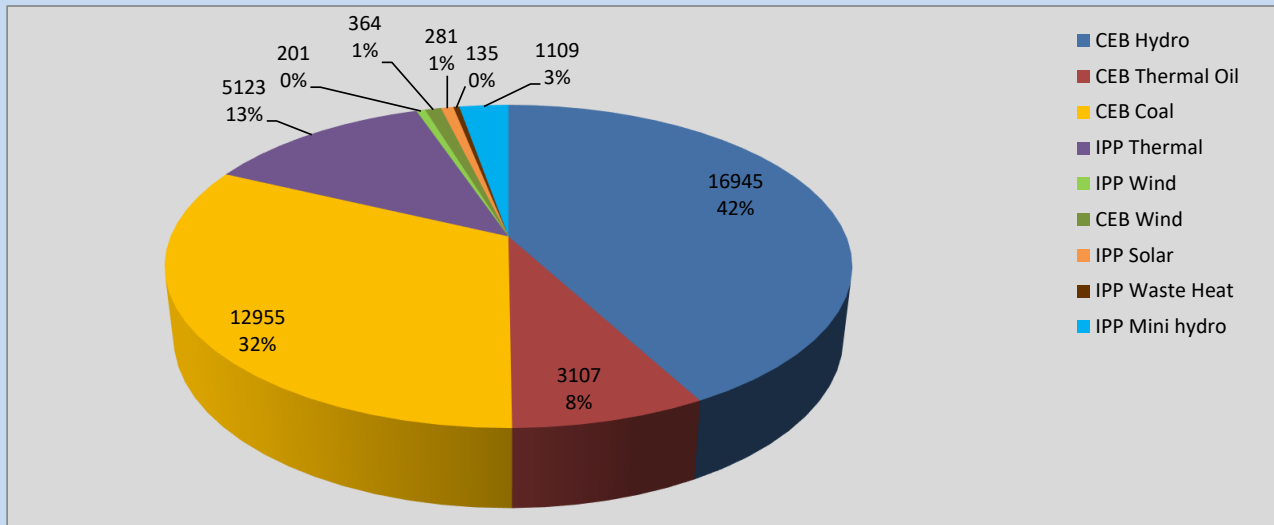
Generation and Reservoirs Statistics

July 19, 2022



PUBLIC UTILITIES COMMISSION OF SRI LANKA

Daily Generation Mix in MWh



Total Generation

40,220 MWh

Note: Above data is excluding contribution from Roof Top Solar, 1MW Solar and certain Mini Hydro plants

Cumulative Dispatch

Note: Following data is Excluding contribution from Roof Top Solar, 1MW solar and Mini Hydro plants

For Current Month

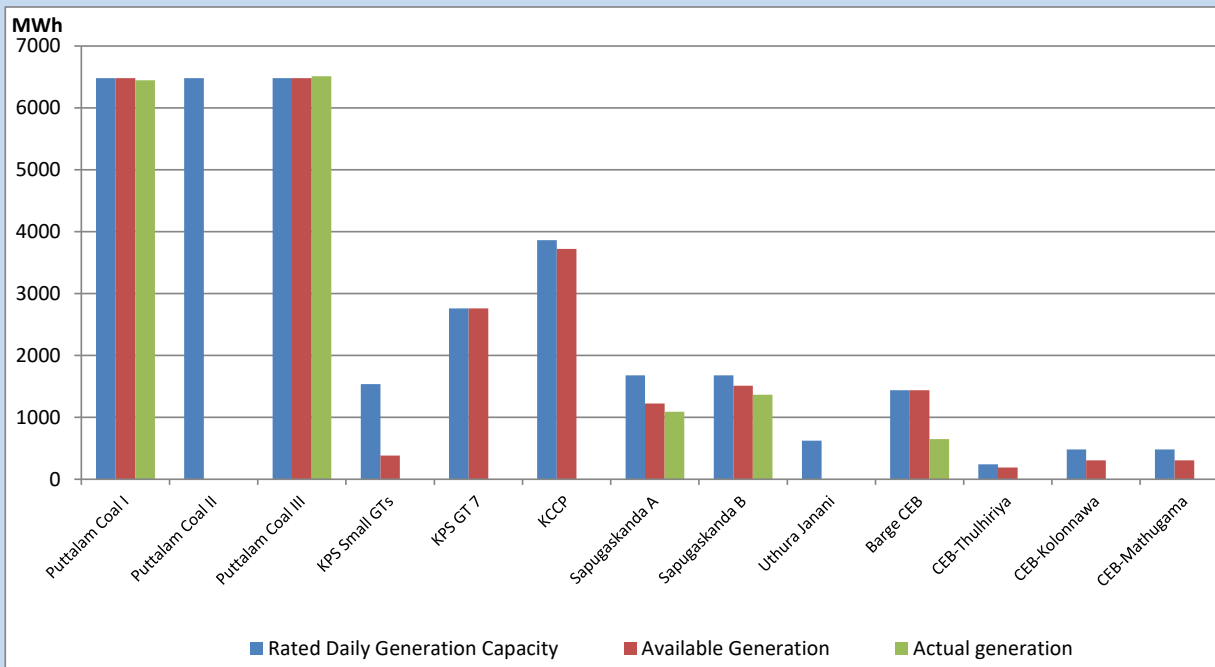
Category	Dispatch (GWh)	Percentage
CEB Hydro	260.83	35.55%
CEB Thermal Oil	74.74	10.19%
CEB Coal	237.28	32.34%
IPP Thermal	66.74	9.10%
SPP Wind	27.42	3.74%
CEB Wind	27.94	3.81%
SPP Solar	5.14	0.70%
SPP Solid Waste	4.37	0.60%
Mini Hydro	29.17	3.98%
Total	733.63	

For Current Year

Category	Dispatch (GWh)	Percentage
CEB Hydro	2,312.2	28.06%
CEB Thermal Oil	1,014.9	12.31%
CEB Coal	3,265.5	39.63%
IPP Thermal	938.3	11.39%
SPP Wind	177.3	2.15%
CEB Wind	193.8	2.35%
SPP Solar	51.6	0.63%
SPP Solid Waste	42.9	0.52%
Mini Hydro	244.8	2.97%
Total	8,241.0	

CEB owned Thermal Plant Dispatch

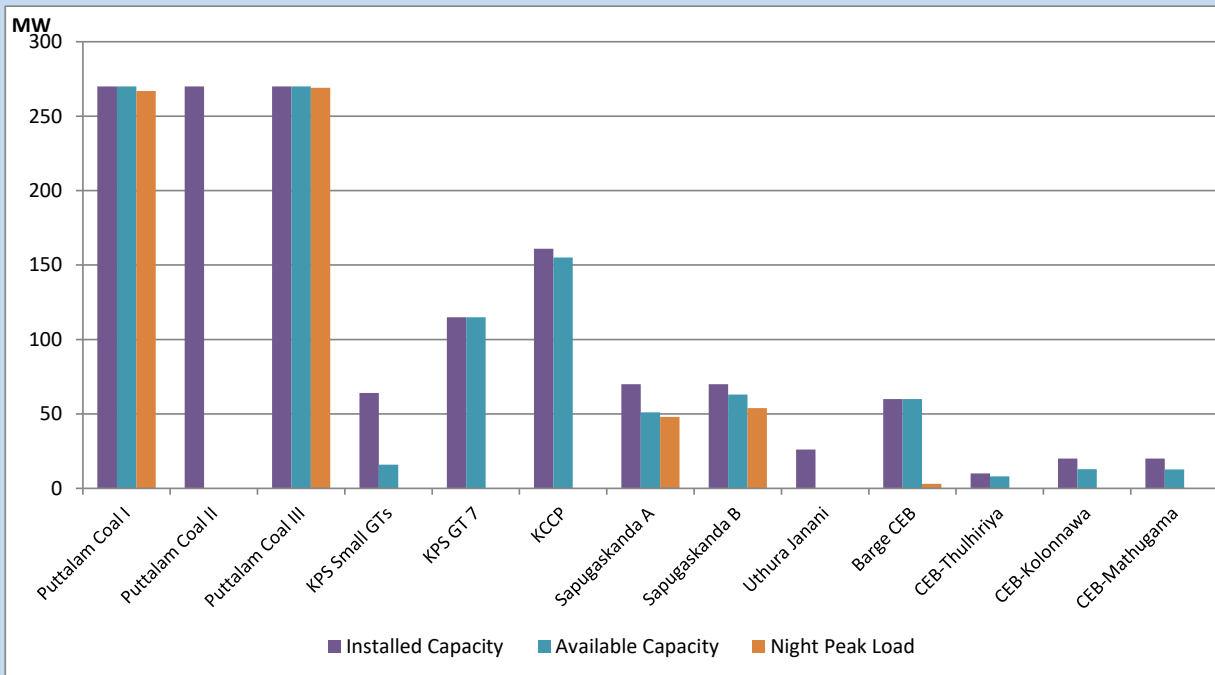
July 19, 2022



Available Generation is estimated based on plant availability at 6.00am on

July 20, 2022

CEB owned Thermal Plant Loading at the Night Peak



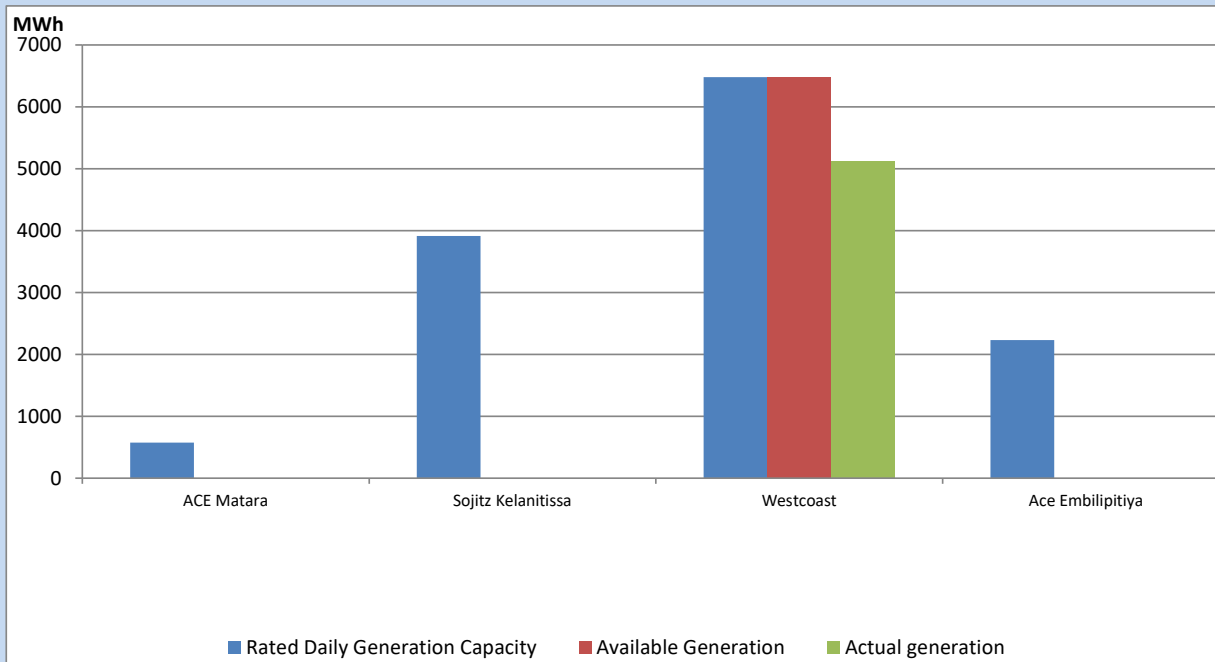
Note- Plant availability is recorded at 6.00 am on

July 20, 2022

IPP owned Thermal Plant Dispatch

July 19, 2022

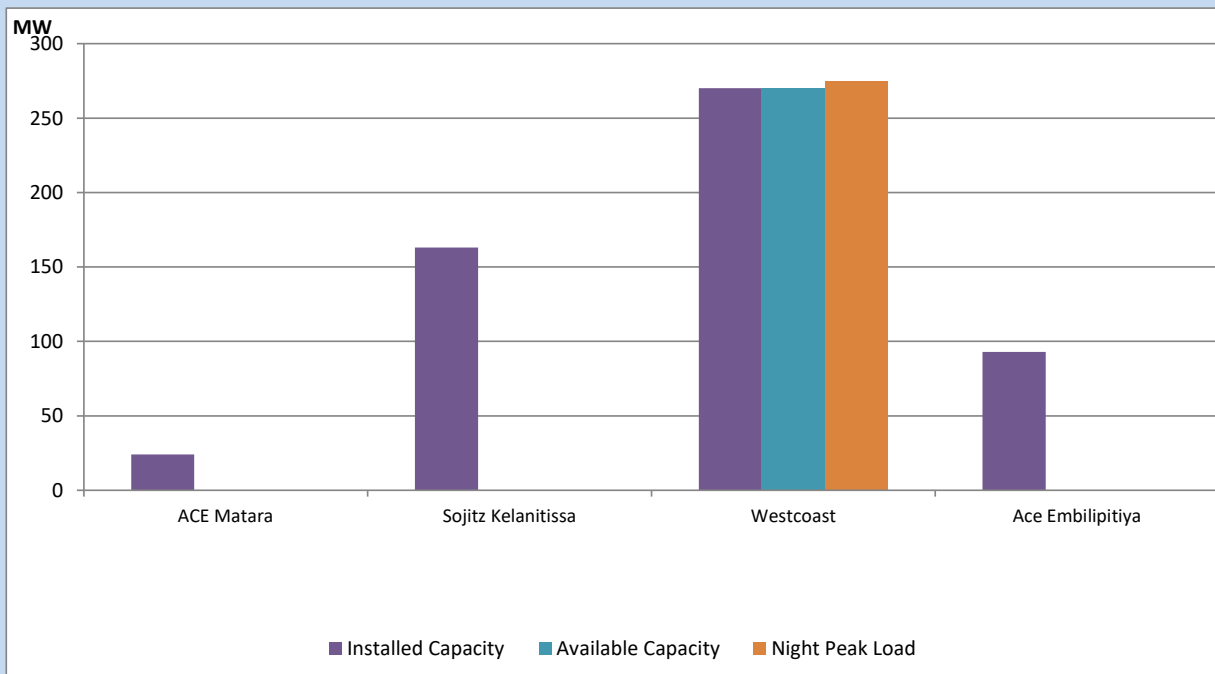
Asia Power, V Power Pallekale, Vpower Galle, V Power Horana, Vpower Hambantota, Vpower Valachchena and Altaqa Mahiyanganaya are not available due to expiration of PPAs



Available Generation is estimated based on plant availability at 6.00am on

July 20, 2022

IPP owned Thermal Plant Loading at the Night Peak

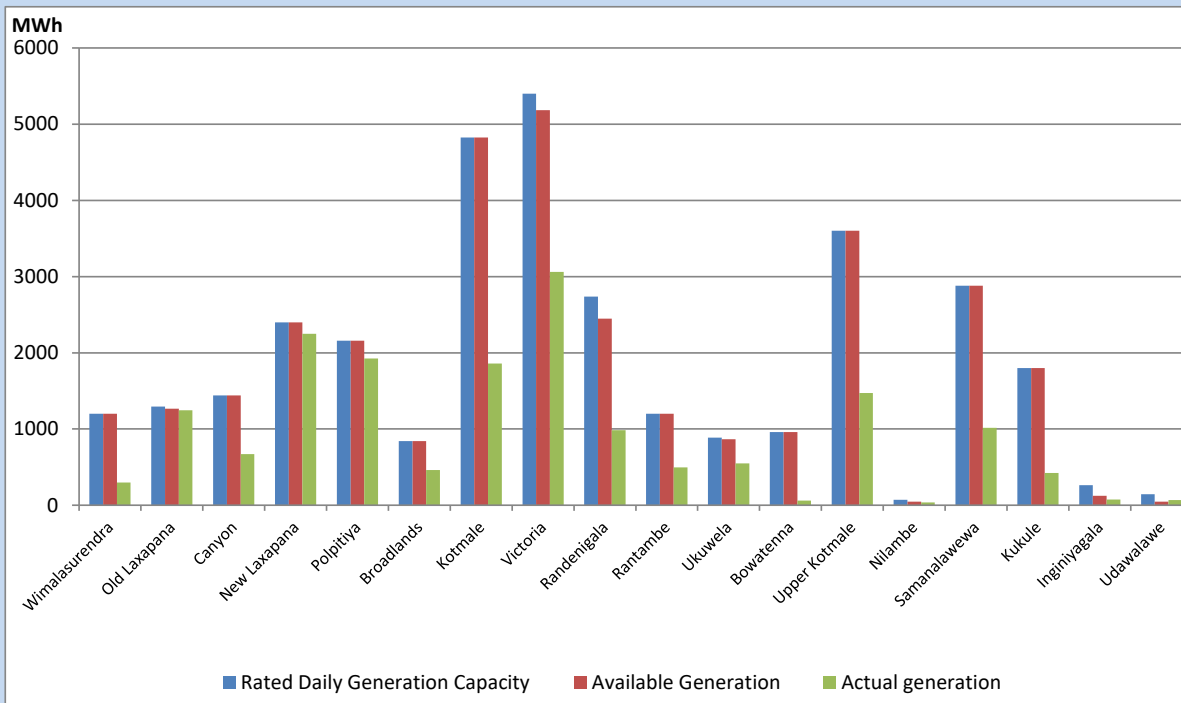


Note- Plant availability is recorded at 6.00 am on

July 20, 2022

Major Hydro Plant Dispatch

July 19, 2022

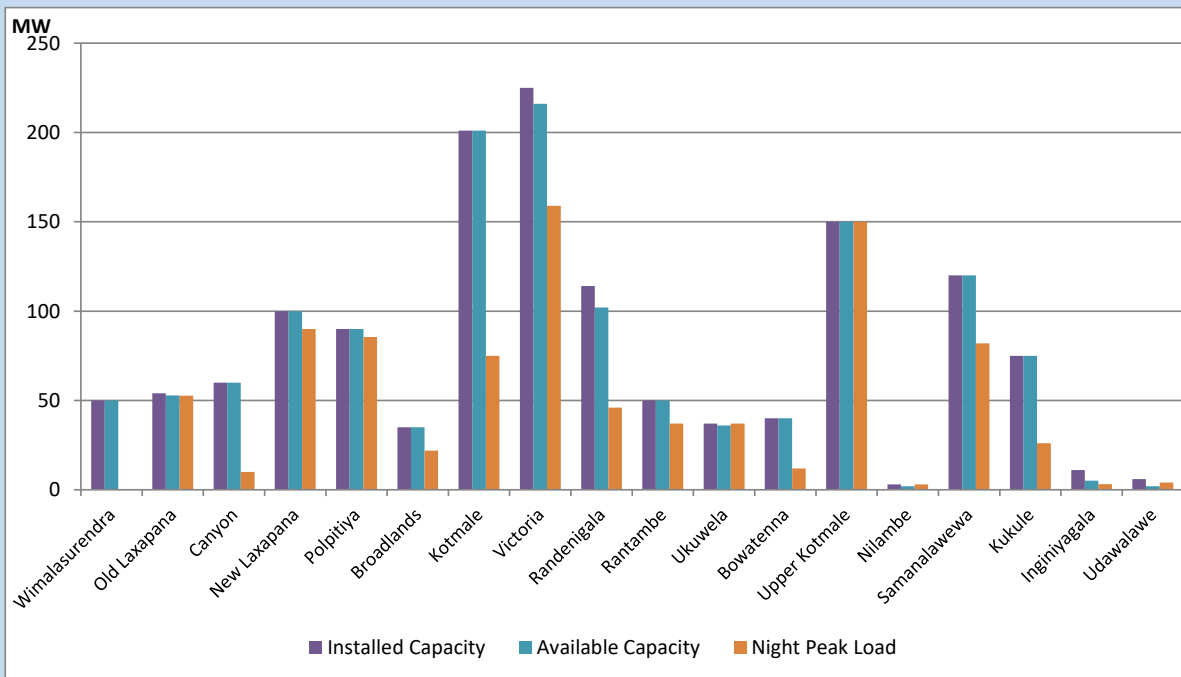


Available Generation is estimated based on plant availability at 6.00am on
Broadlands power plant is operating in the Commissioning Stage

July 20, 2022

Major Hydro Plant Loading at Night Peak

July 19, 2022



Note- Plant availability is recorded at 6.00 am on
Broadlands power plant is operating in the Commissioning Stage

July 20, 2022

Summary of Major Plant performance

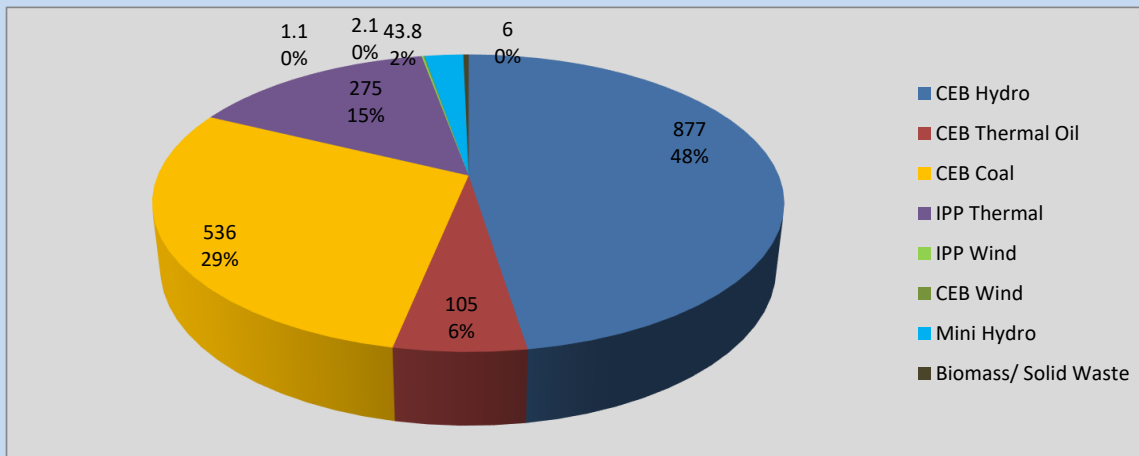
Plant	Installed Capacity	Plant Availability	Night peak Load	Plant Dispatch
	(MW)	(MW)	(MW)	(MWh)
Wimalasurendra	50	50	0	296
Old Laxapana	54	53	53	1,244
Canyon	60	60	10	669
New Laxapana	100	100	90	2,249
Polpitiya	90	90	86	1,926
Broadlands	35	35	22	462
Kotmale	201	201	75	1,860
Victoria	225	216	159	3,063
Randenigala	114	102	46	984
Rantambe	50	50	37	495
Ukuwela	37	36	37	547
Bowatenna	40	40	12	60
Upper Kotmale	150	150	150	1,473
Nilambe	3	2	3	37
Samanalawewa	120	120	82	1,014
Kukule	75	75	26	424
Inginiyagala	11	5	3	75
Udawalawe	6	2	4	67
Puttalam Coal I	270	270	267	6,445
Puttalam Coal II	270	0	0	0
Puttalam Coal III	270	270	269	6,510
KPS Small GTs	64	16	0	0
KPS GT 7	115	115	0	0
KCCP	161	155	0	0
Sapugaskanda A	70	51	48	1,092
Sapugaskanda B	70	63	54	1,366
Uthura Janani	26	0	0	0
Barge CEB	60	60	3	649
CEB-Thulhiriya	10	8	0	0
CEB-Kolonnawa	20	13	0	0
CEB-Mathugama	20	13	0	0
ACE Matara	24	0	0	0
Sojitz Kelanitissa	163	0	0	0
West Coast	270	270	275	5,123
ACE Embilipitiya	93	0	0	0
Total	3,397	2,690	1,863	40,220

Plant availability is the availability recorded at 6 am on

July 20, 2022

Contribution to the Night Peak in MW

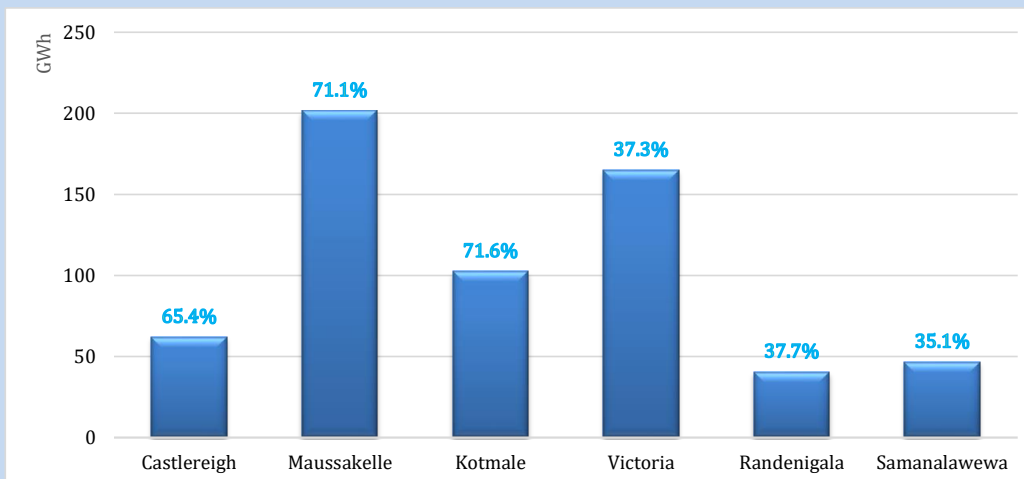
July 19, 2022



Night Peak*	1,846.4 MW
Day Peak	2,014.9 MW
Minimum Demand	1,339.8 MW

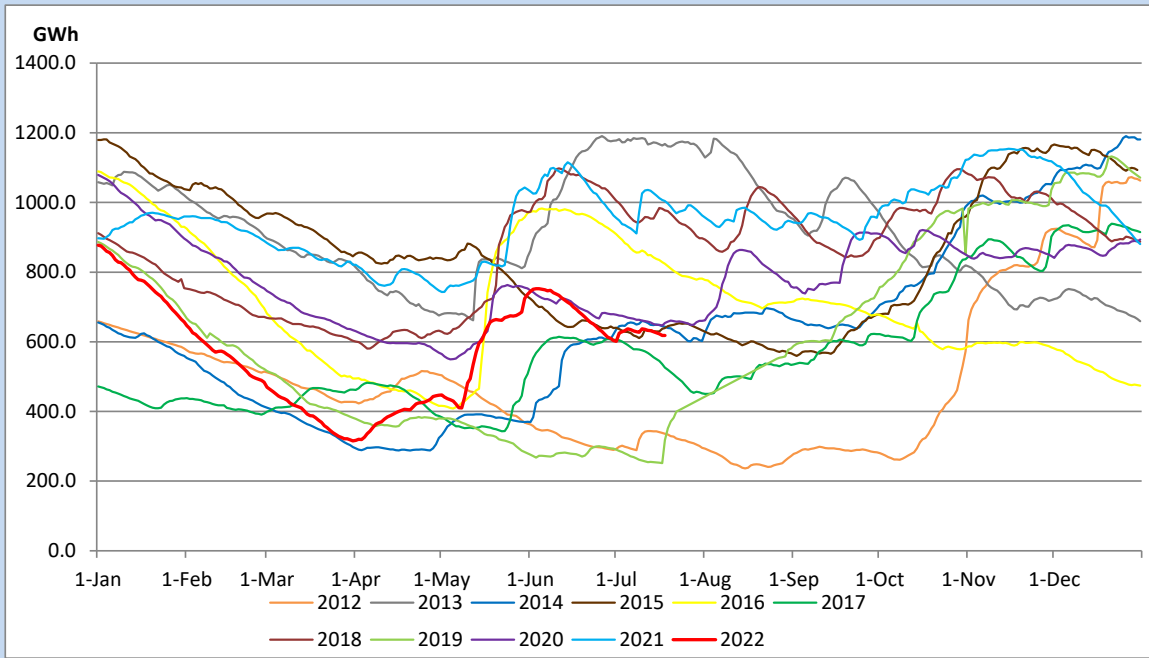
Above figures are excluding contribution from Roof Top Solar, 1MW solar, certain Wind plants and Mini Hydro plants

Reservoir Levels - as at 06.00 Hr on July 20, 2022

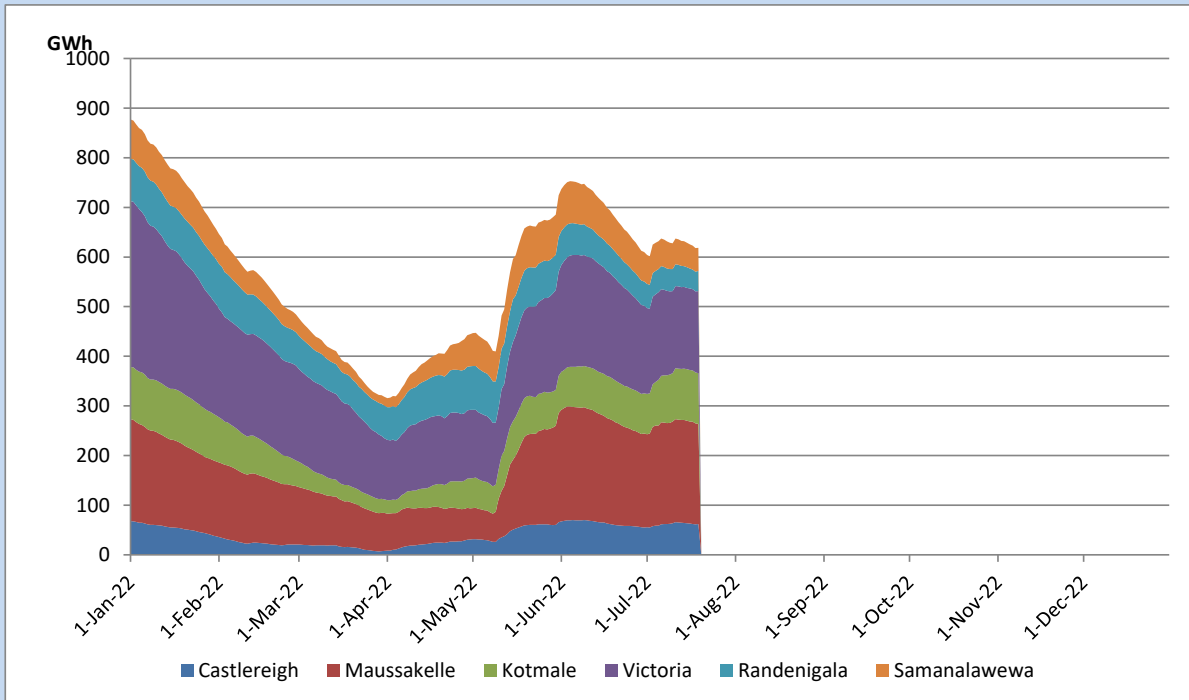


Total Reservoir Level	618.5 GWh
% of Total capacity	51.3%

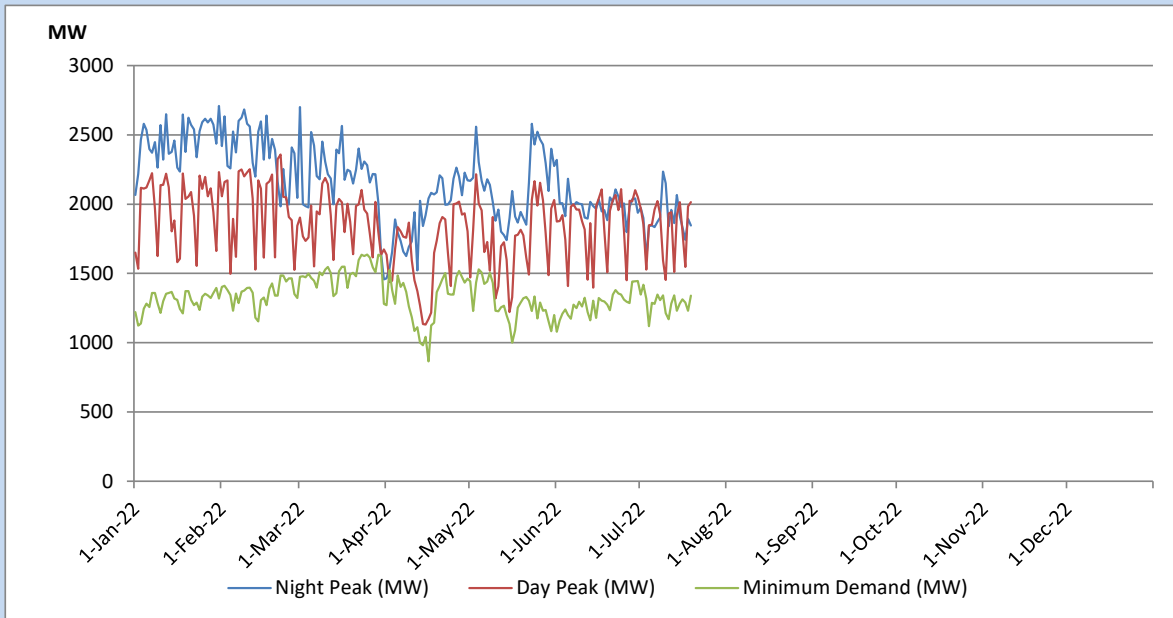
Comparison of Total Reservoir Storage Levels with Past Years



Variation of Major Hydro Reservoir Levels in the current year (GWh)



Variation of Demand during the current year

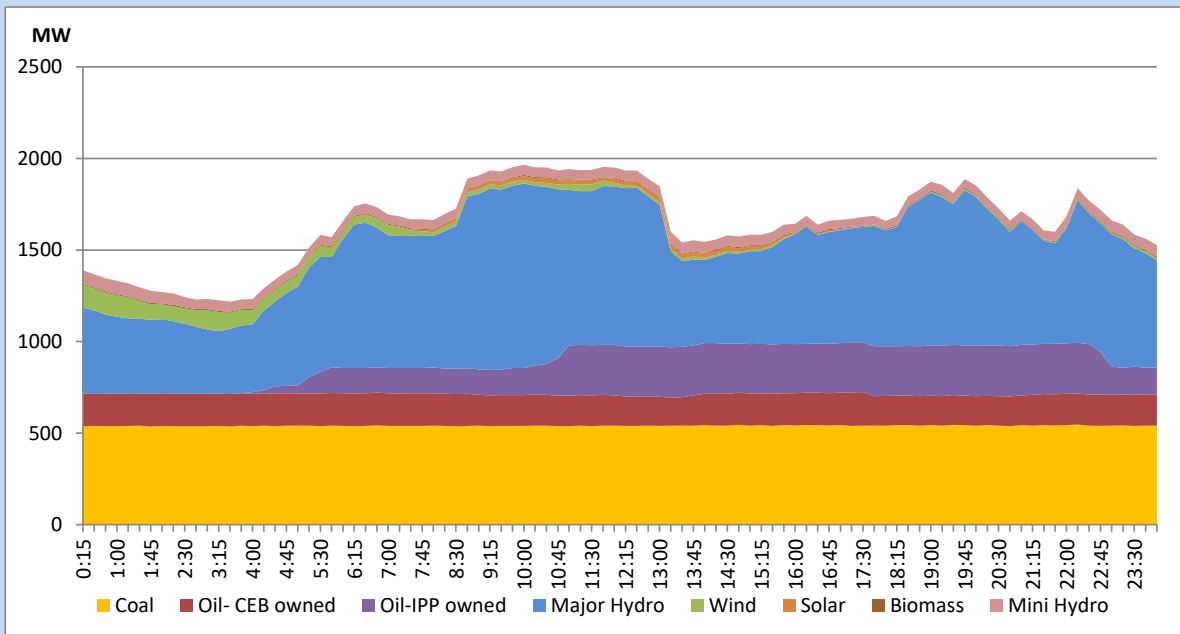


The above figures are excluding contribution from Roof Top Solar, 1MW solar, certain Wind plants and Mini Hydro plants

Daily Load Curve of the Previous day

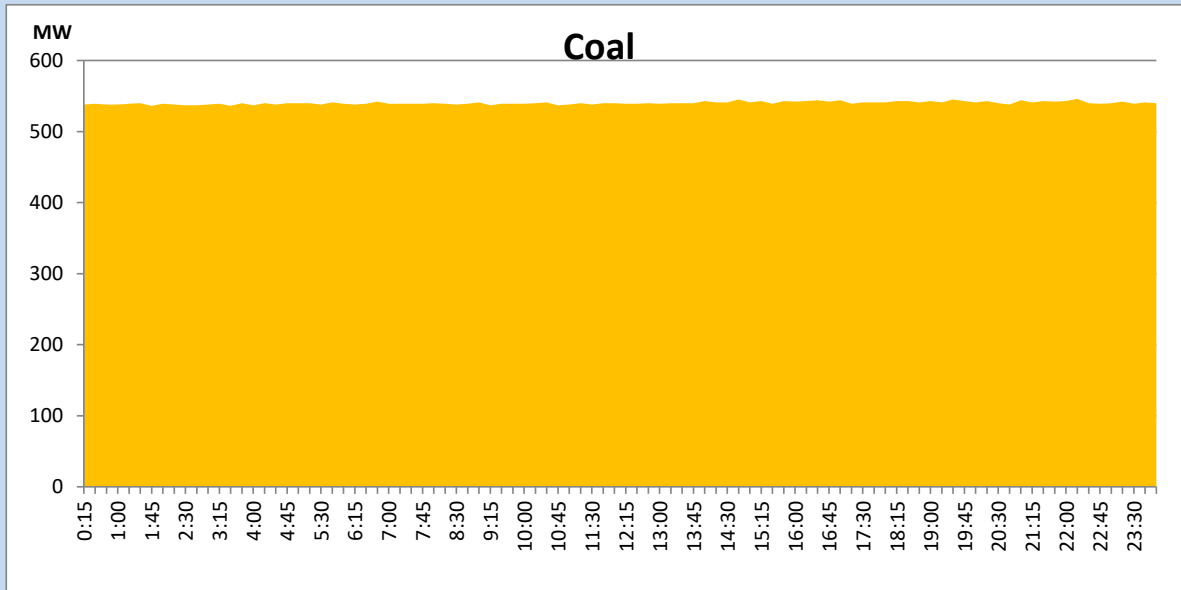
July 18, 2022

Solar and wind data is based on Telemetered Power Stations only



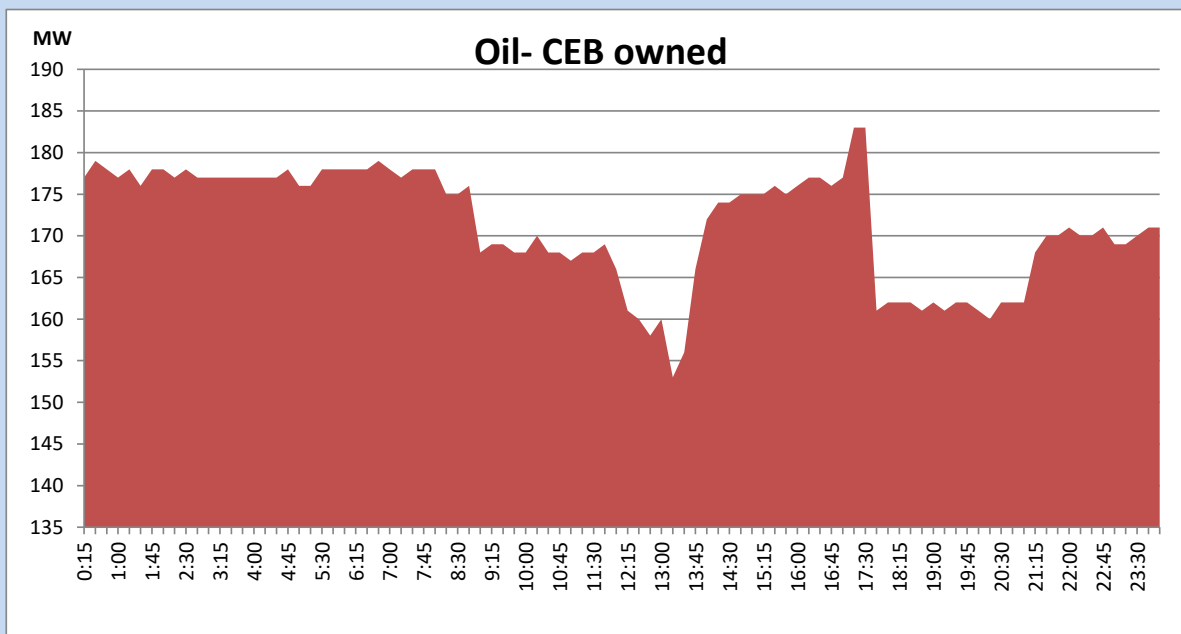
Coal Generation during the Previous day

July 18, 2022



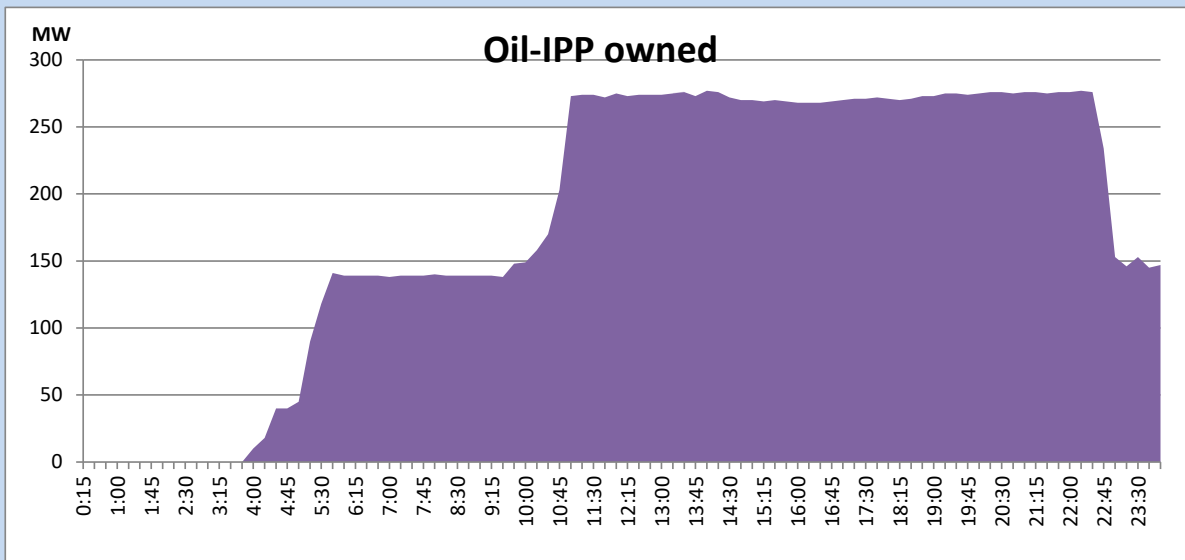
CEB Oil Plant Generation during the Previous day

July 18, 2022



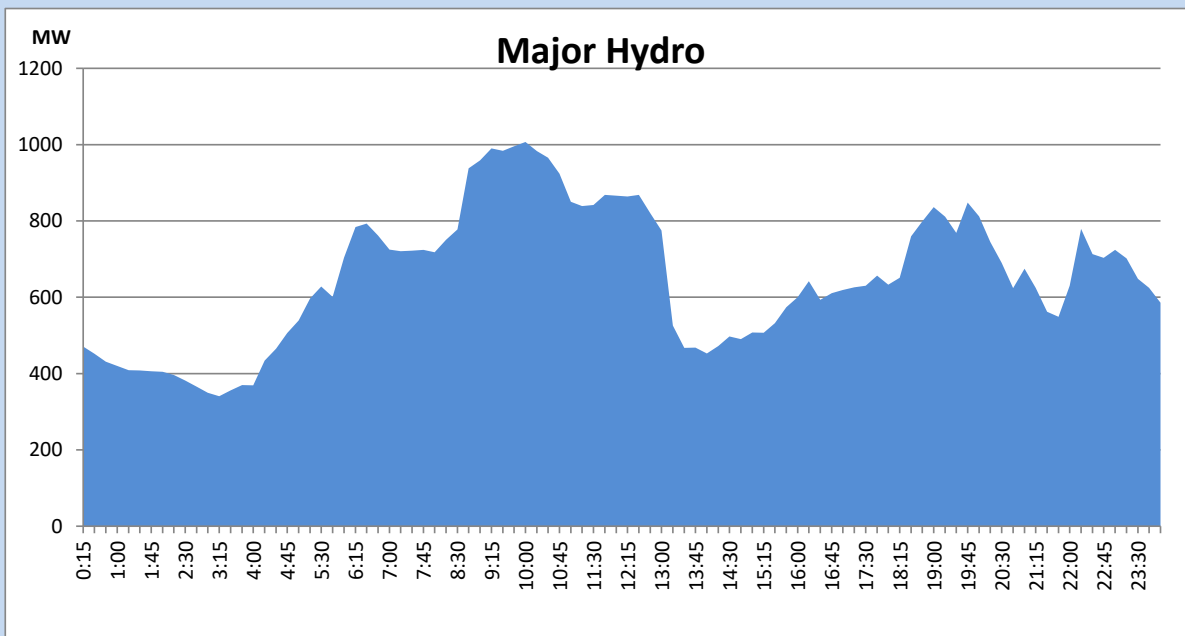
IPP Oil Plant Generation during the Previous day

July 18, 2022



Major Hydro Generation during the Previous day

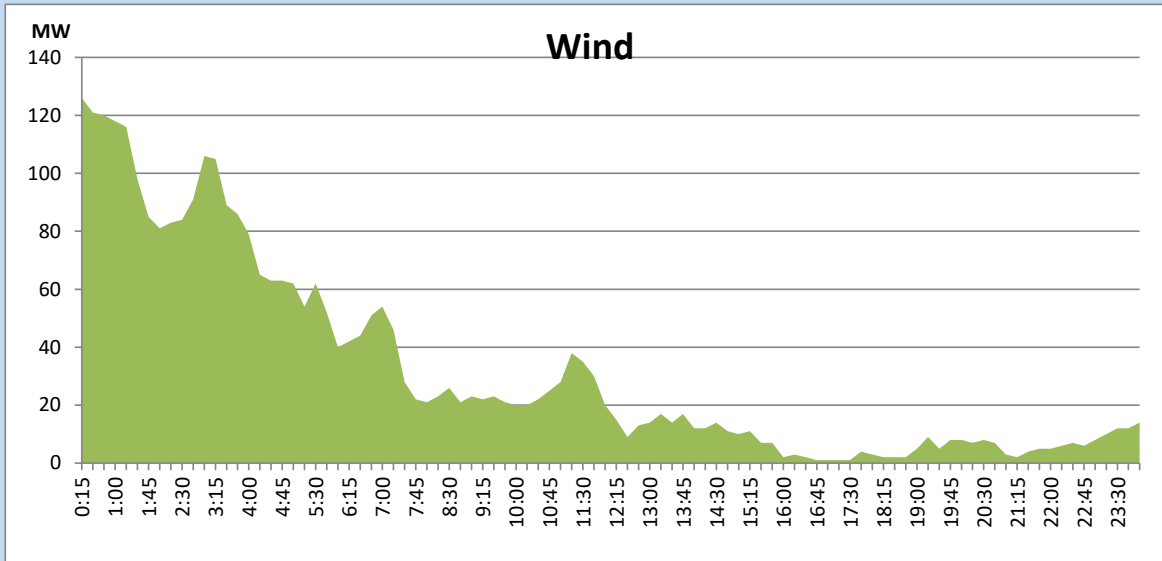
July 18, 2022



Wind Generation during the Previous day

July 18, 2022

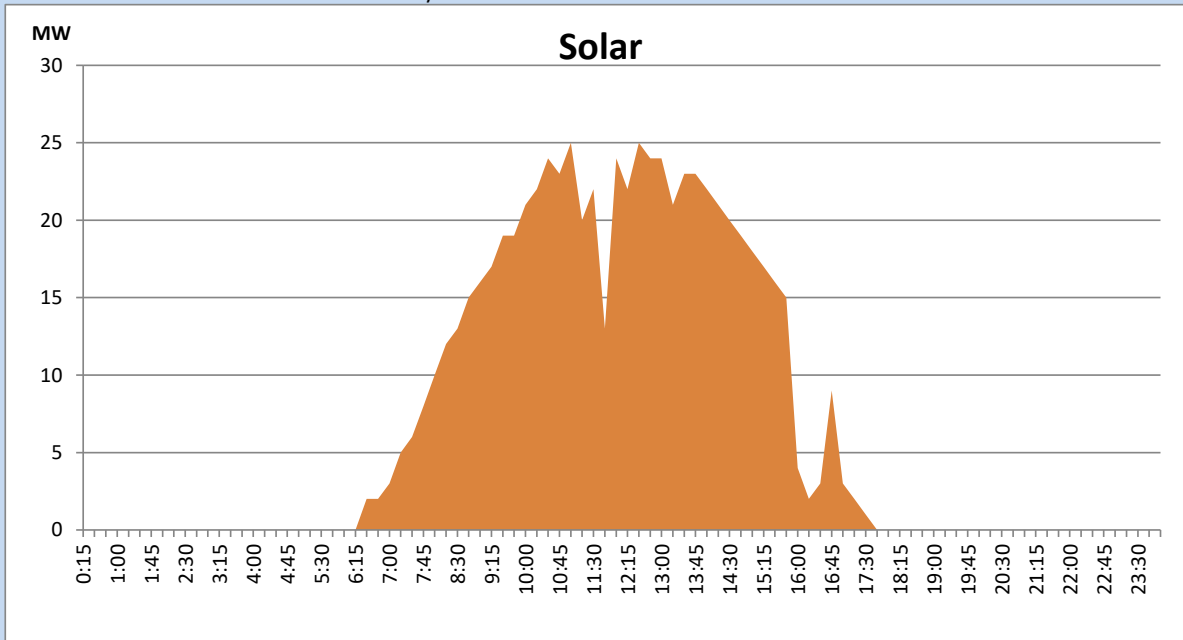
Based on Telemetered Power Stations only



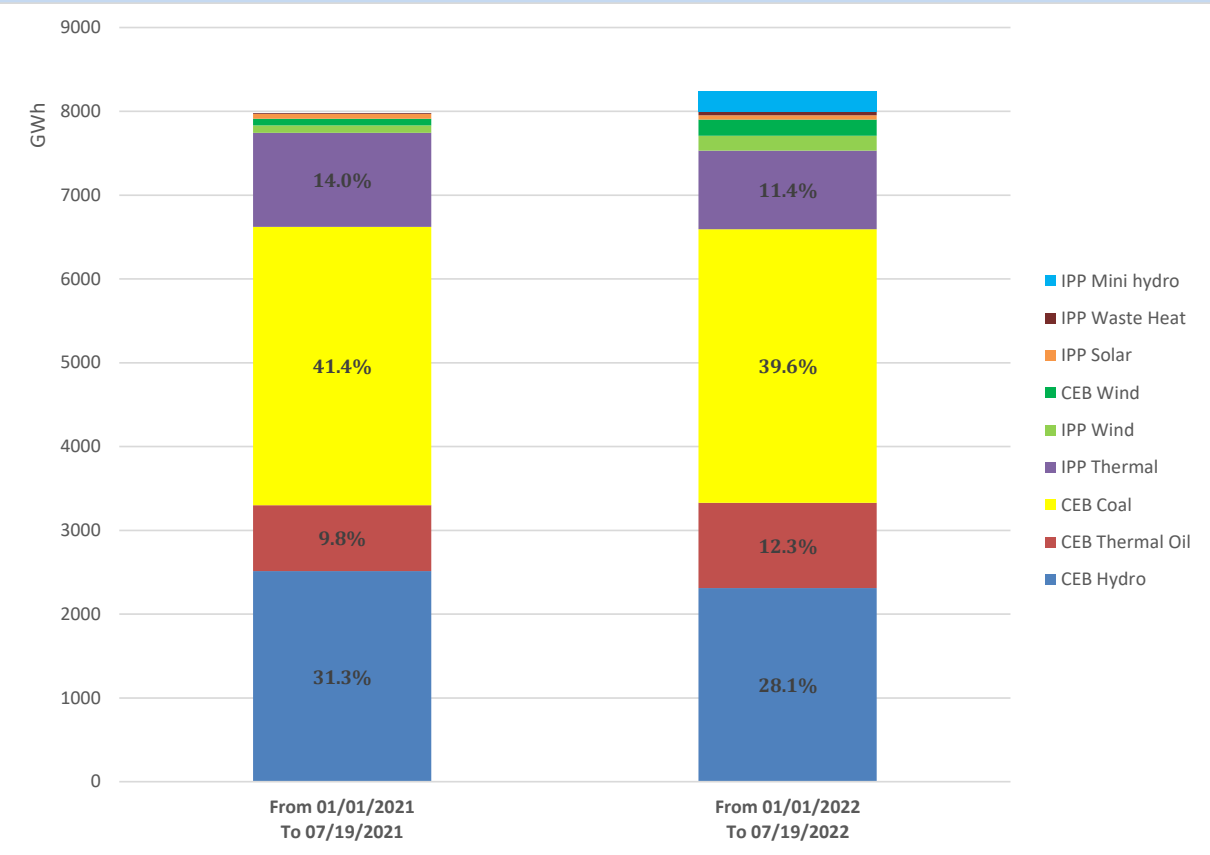
Solar Generation during the Previous day

July 18, 2022

Based on Telemetered Power Stations only



Cumulative Dispatch Comparison with Last Year



Thermal Plant Fuel types

Power Station	Primary Fuel
CEB Thermal	
Sapugaskanda 1	Heavy Fuel
Sapugaskanda 2	Heavy Fuel
Kelanitissa Small Gas Turbines	Auto Diesel
GT 7 - Kelanitissa	Auto Diesel
Kelanitissa CCY	Naphtha or Diesel
Lakvijaya 1	Coal
Lakvijaya 2	Coal
Lakvijaya 3	Coal
Uthuru Janani	Heavy Fuel
Barge CEB	Heavy Fuel

Power Station	Primary Fuel
Private Thermal	
Sojitz - Kelanitissa	Auto Diesel
West Coast	Auto Diesel / Heavy Fuel
ACE Matara	Heavy Fuel
ACE Embilipitiya	Heavy Fuel

Major Incidents during the day -as reported by CEB morning of

July 20, 2022

- 1) Rotational manual load shedding was carried out from 05:30 hrs to 08:30 hrs and 13:00 hrs to 22:00 hrs.
- 2) New Anuradhapura - Vavunia cct 01 tripped and auto-reclosed at 11:05 hrs due to the operation of distance protection.
- 3) New Galle - Balangoda cct tripped and auto-reclosed at 17:25 hrs due to the operation of distance protection.
- 4) Biyagama 220/132/33 kV T/F 01 tripped at 18:14 hrs with the LV SEF protection trip indication. The T/F is yet to normalize.