

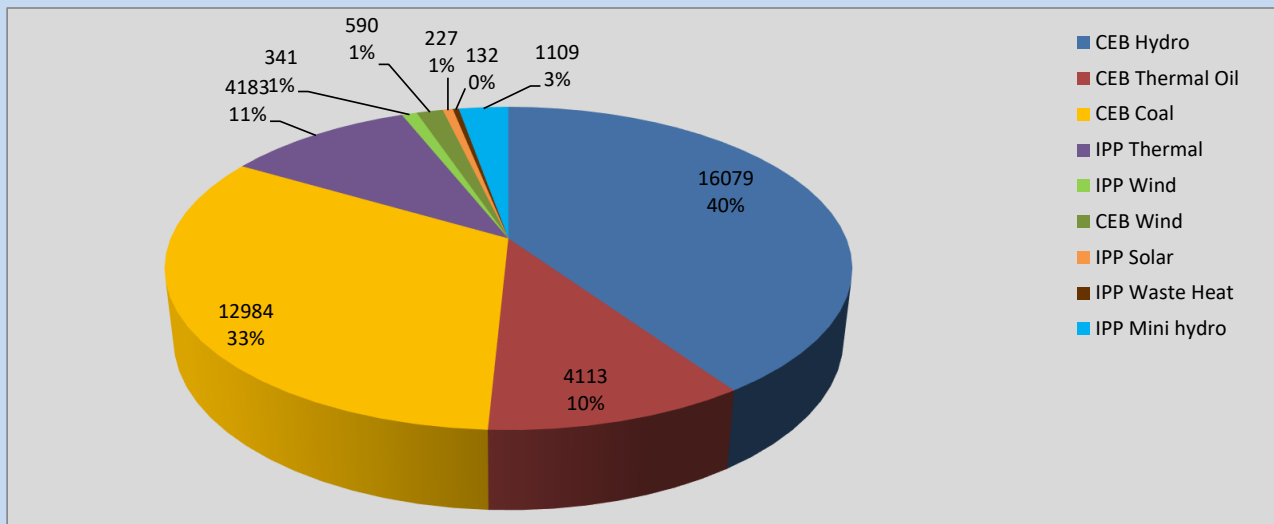
# Generation and Reservoirs Statistics

July 18, 2022



PUBLIC UTILITIES COMMISSION OF SRI LANKA

## Daily Generation Mix in MWh



**Total Generation** **39,758 MWh**

Note: Above data is excluding contribution from Roof Top Solar, 1MW Solar and certain Mini Hydro plants

## Cumulative Dispatch

Note: Following data is Excluding contribution from Roof Top Solar, 1MW solar and Mini Hydro plants

### For Current Month

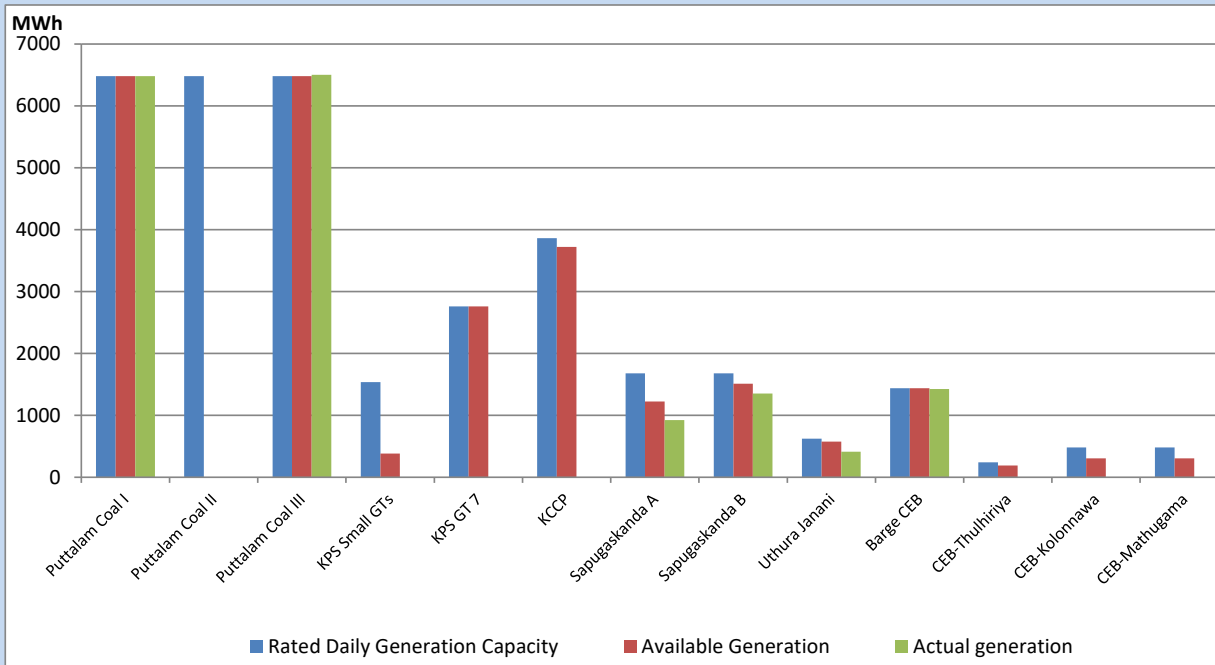
Category	Dispatch (GWh)	Percentage
CEB Hydro	243.88	35.17%
CEB Thermal Oil	71.63	10.33%
CEB Coal	224.32	32.35%
IPP Thermal	61.62	8.89%
SPP Wind	27.22	3.93%
CEB Wind	27.58	3.98%
SPP Solar	4.86	0.70%
SPP Solid Waste	4.24	0.61%
Mini Hydro	28.06	4.05%
<b>Total</b>	<b>693.41</b>	

### For Current Year

Category	Dispatch (GWh)	Percentage
CEB Hydro	2,295.2	27.99%
CEB Thermal Oil	1,011.7	12.34%
CEB Coal	3,252.6	39.66%
IPP Thermal	933.2	11.38%
SPP Wind	177.1	2.16%
CEB Wind	193.5	2.36%
SPP Solar	51.3	0.63%
SPP Solid Waste	42.7	0.52%
Mini Hydro	243.7	2.97%
<b>Total</b>	<b>8,200.8</b>	

## CEB owned Thermal Plant Dispatch

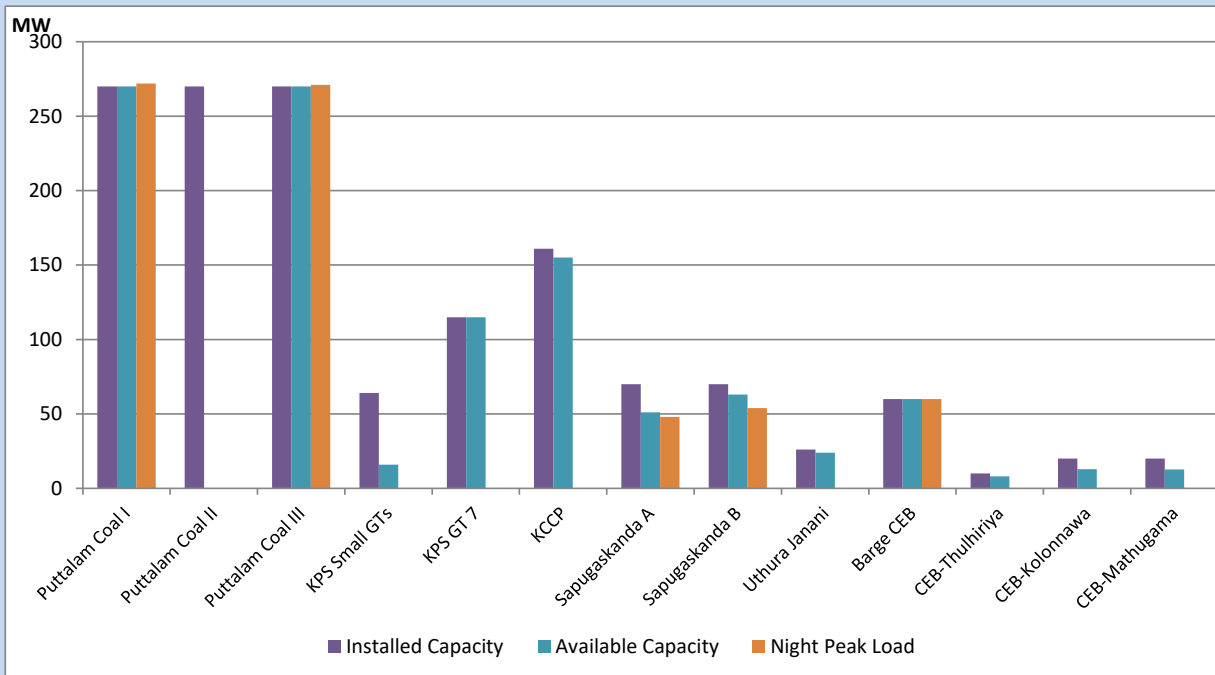
July 18, 2022



Available Generation is estimated based on plant availability at 6.00am on

July 19, 2022

## CEB owned Thermal Plant Loading at the Night Peak



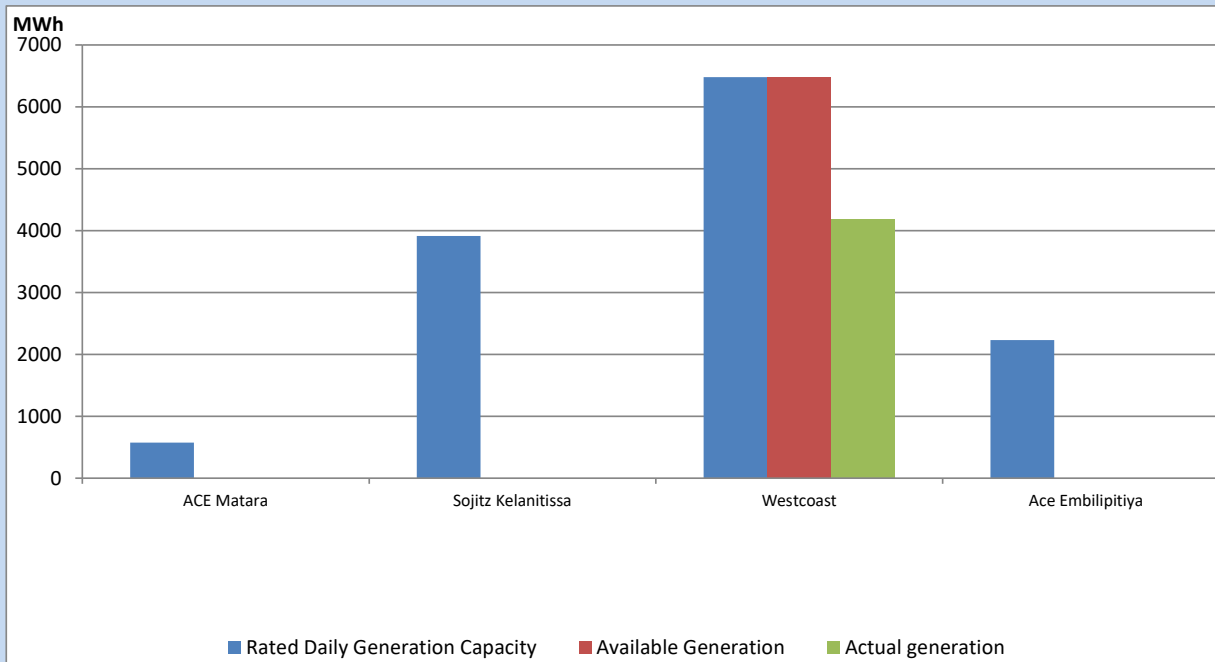
Note- Plant availability is recorded at 6.00 am on

July 19, 2022

## IPP owned Thermal Plant Dispatch

July 18, 2022

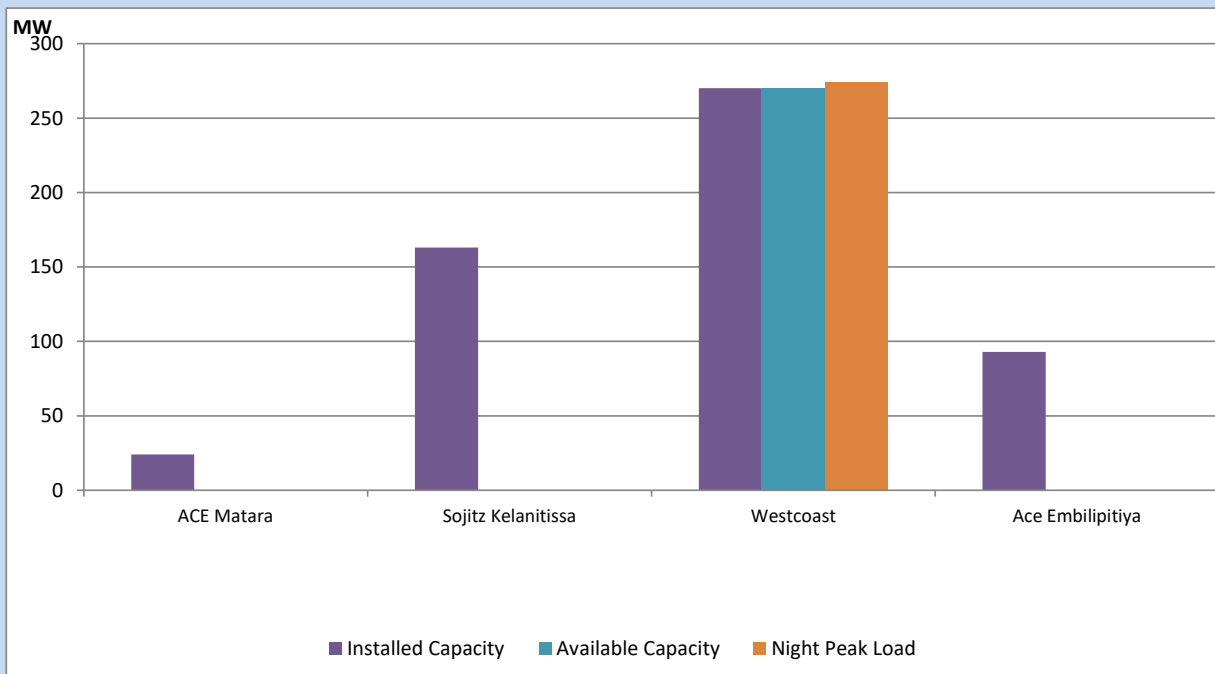
Asia Power, V Power Pallekale, Vpower Galle, V Power Horana, Vpower Hambantota, Vpower Valachchena and Altaqa Mahiyanganaya are not available due to expiration of PPAs



Available Generation is estimated based on plant availability at 6.00am on

July 19, 2022

## IPP owned Thermal Plant Loading at the Night Peak

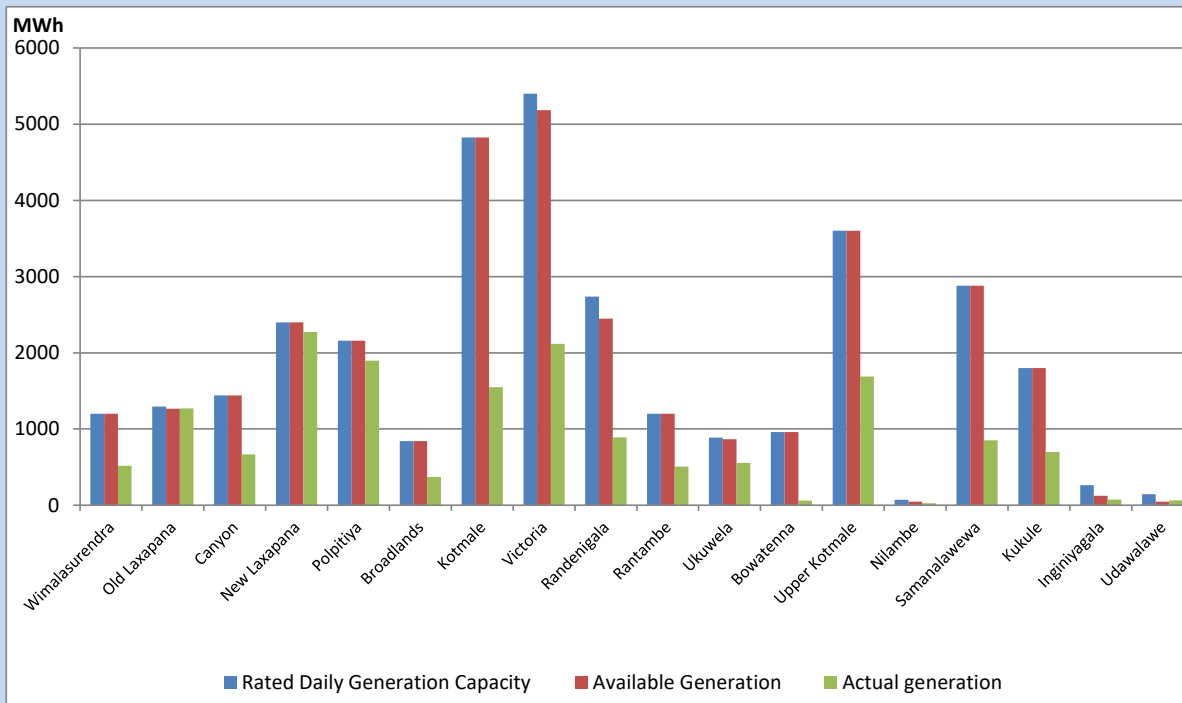


Note- Plant availability is recorded at 6.00 am on

July 19, 2022

## Major Hydro Plant Dispatch

July 18, 2022

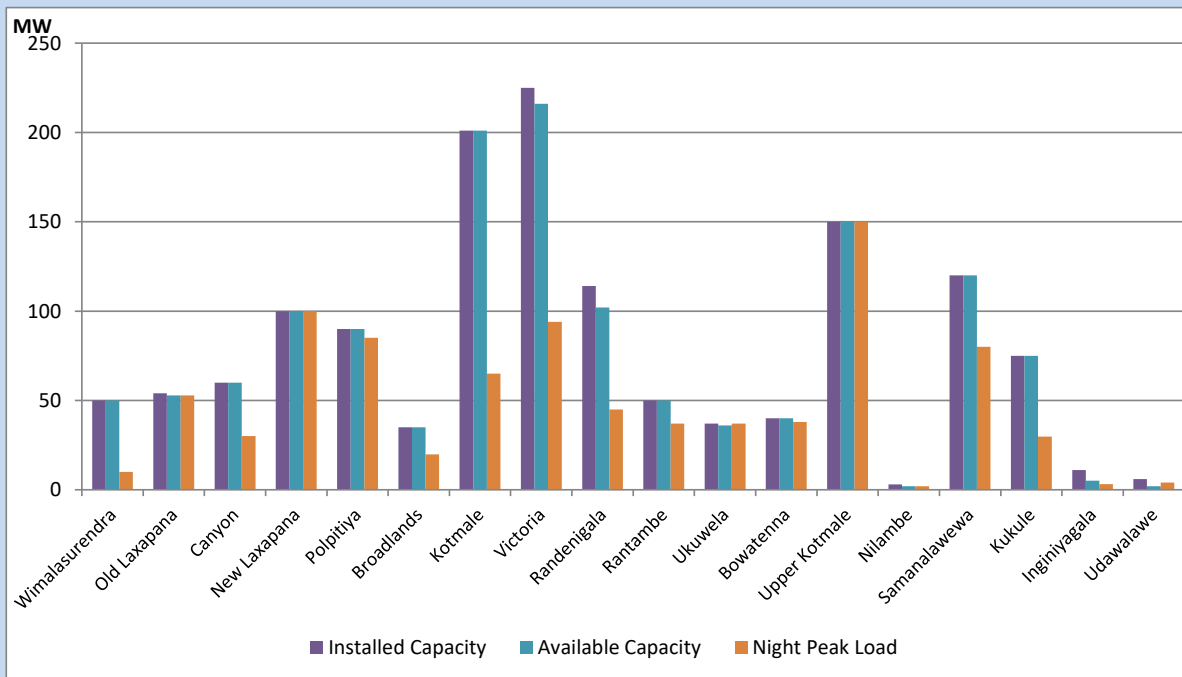


Available Generation is estimated based on plant availability at 6.00am on  
Broadlands power plant is operating in the Commissioning Stage

July 19, 2022

## Major Hydro Plant Loading at Night Peak

July 18, 2022



Note- Plant availability is recorded at 6.00 am on  
Broadlands power plant is operating in the Commissioning Stage

July 19, 2022

## Summary of Major Plant performance

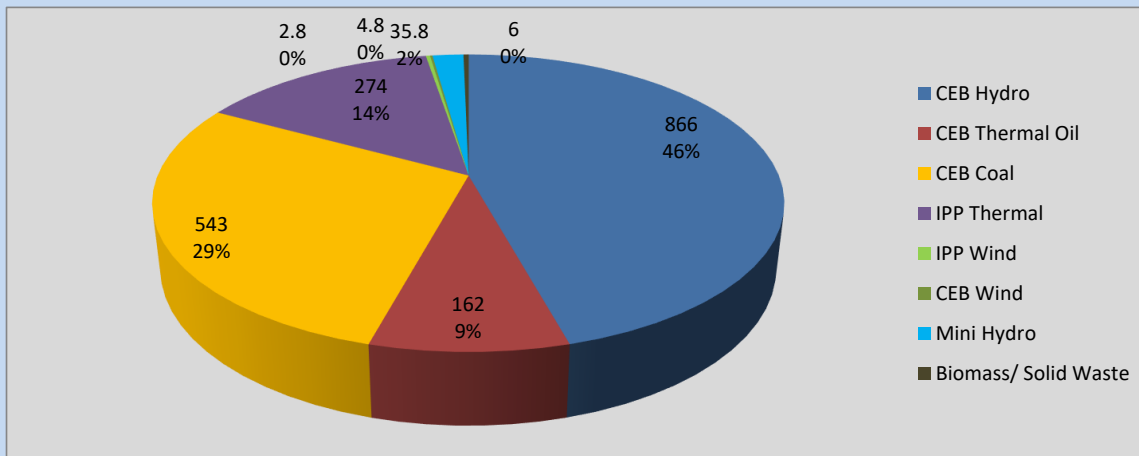
Plant	Installed Capacity	Plant Availability	Night peak Load	Plant Dispatch
	(MW)	(MW)	(MW)	(MWh)
Wimalasurendra	50	50	10	518
Old Laxapana	54	53	53	1,269
Canyon	60	60	30	667
New Laxapana	100	100	100	2,273
Polpitiya	90	90	85	1,898
Broadlands	35	35	20	372
Kotmale	201	201	65	1,550
Victoria	225	216	94	2,118
Randenigala	114	102	45	890
Rantambe	50	50	37	507
Ukuwela	37	36	37	554
Bowatenna	40	40	38	60
Upper Kotmale	150	150	150	1,689
Nilambe	3	2	2	27
Samanalawewa	120	120	80	851
Kukule	75	75	30	698
Inginiyagala	11	5	3	73
Udawalawe	6	2	4	65
Puttalam Coal I	270	270	272	6,482
Puttalam Coal II	270	0	0	0
Puttalam Coal III	270	270	271	6,502
KPS Small GTs	64	16	0	0
KPS GT 7	115	115	0	0
KCCP	161	155	0	0
Sapugaskanda A	70	51	48	923
Sapugaskanda B	70	63	54	1,351
Uthura Janani	26	24	0	411
Barge CEB	60	60	60	1,428
CEB-Thulhiriya	10	8	0	0
CEB-Kolonnawa	20	13	0	0
CEB-Mathugama	20	13	0	0
ACE Matara	24	0	0	0
Sojitz Kelanitissa	163	0	0	0
West Coast	270	270	274	4,183
ACE Embilipitiya	93	0	0	0
<b>Total</b>	<b>3,397</b>	<b>2,714</b>	<b>1,911</b>	<b>39,758</b>

Plant availability is the availability recorded at 6 am on

July 19, 2022

## Contribution to the Night Peak in MW

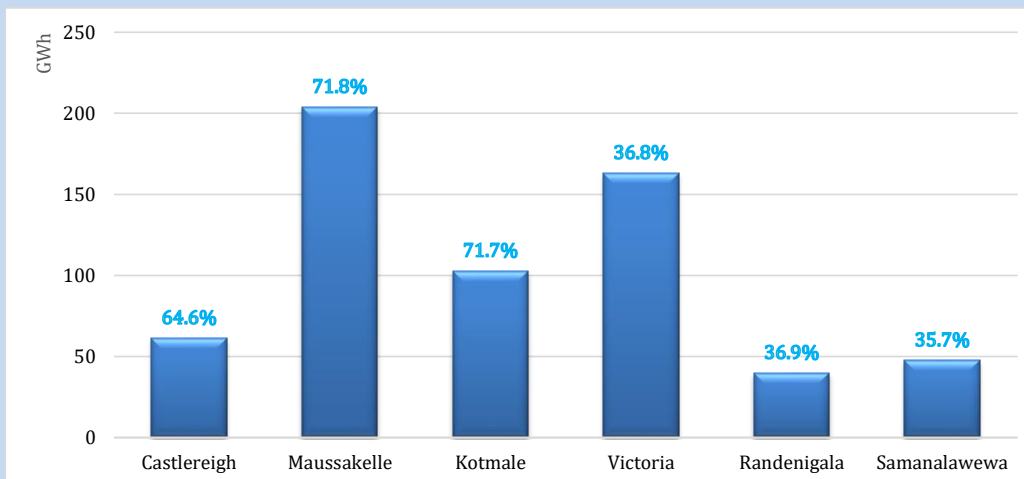
July 18, 2022



Night Peak*	1,894.0 MW
Day Peak	1,983.2 MW
Minimum Demand	1,229.9 MW

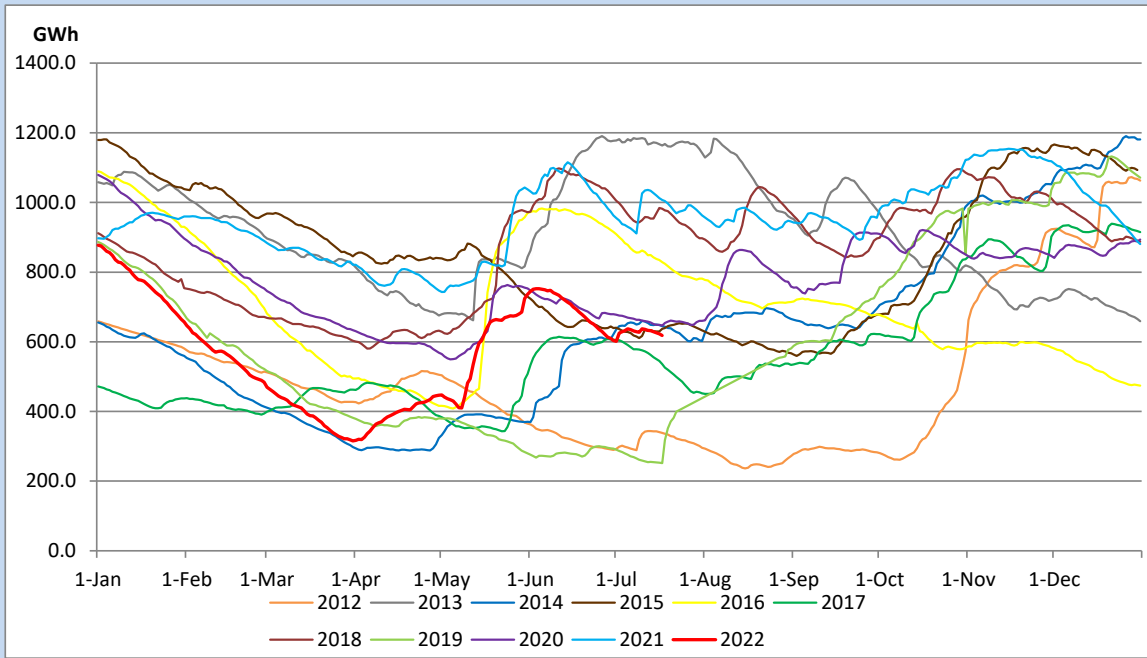
Above figures are excluding contribution from Roof Top Solar, 1MW solar, certain Wind plants and Mini Hydro plants

## Reservoir Levels - as at 06.00 Hr on July 19, 2022

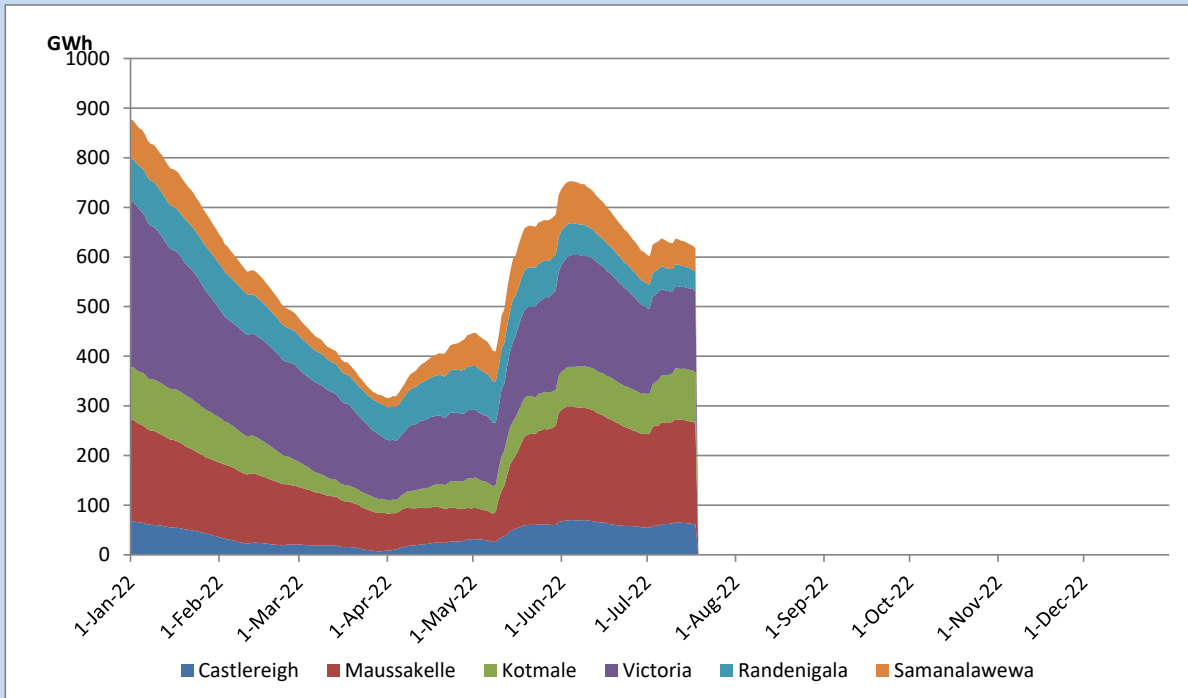


Total Reservoir Level	617.9 GWh
% of Total capacity	51.3%

## Comparison of Total Reservoir Storage Levels with Past Years

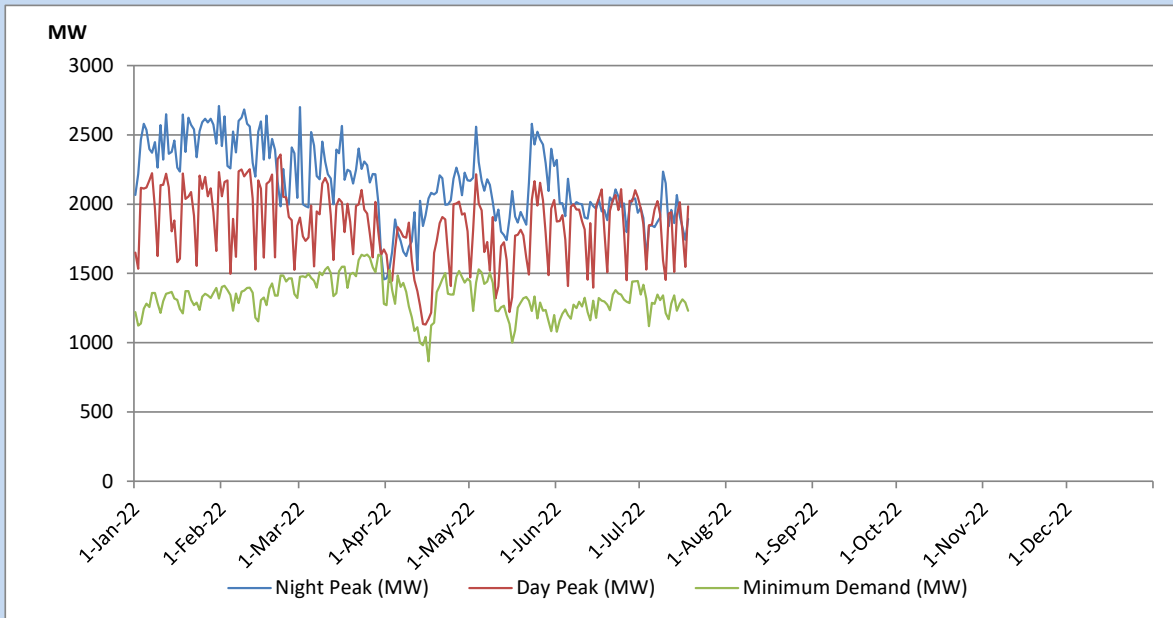


## Variation of Major Hydro Reservoir Levels in the current year (GWh)





## Variation of Demand during the current year

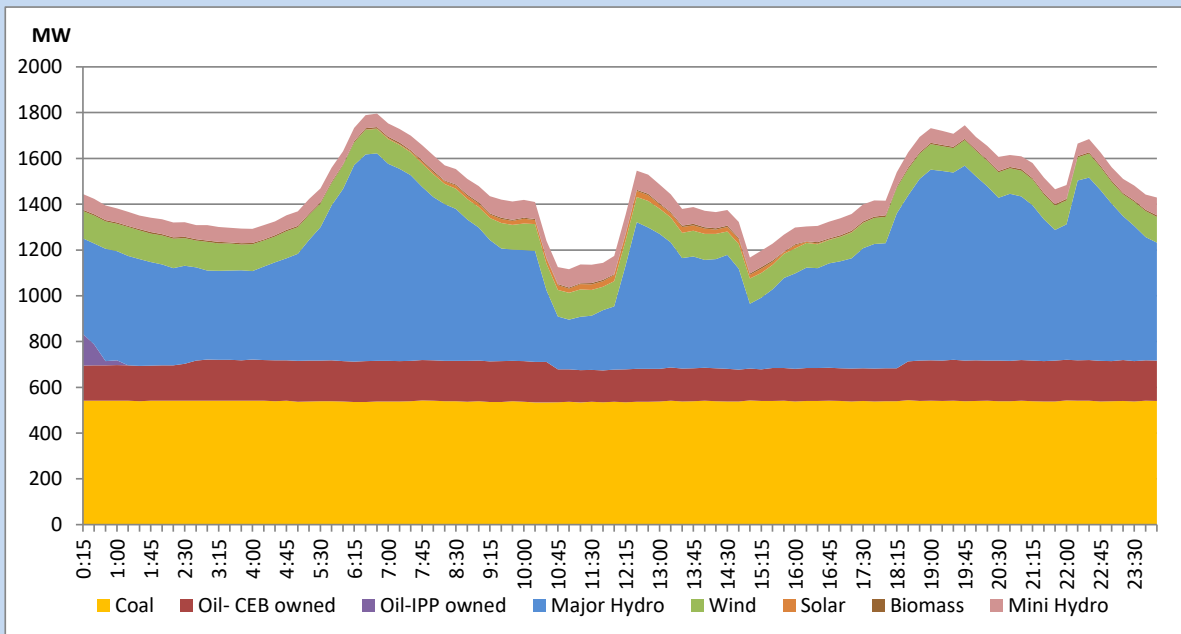


The above figures are excluding contribution from Roof Top Solar, 1MW solar, certain Wind plants and Mini Hydro plants

## Daily Load Curve of the Previous day

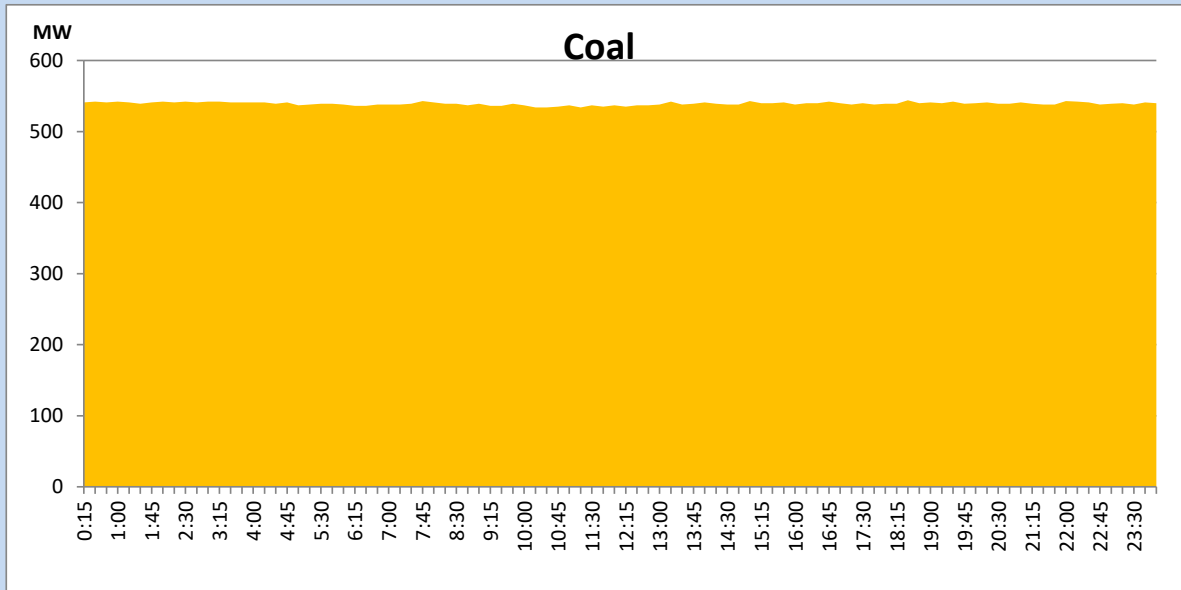
July 17, 2022

Solar and wind data is based on Telemetered Power Stations only



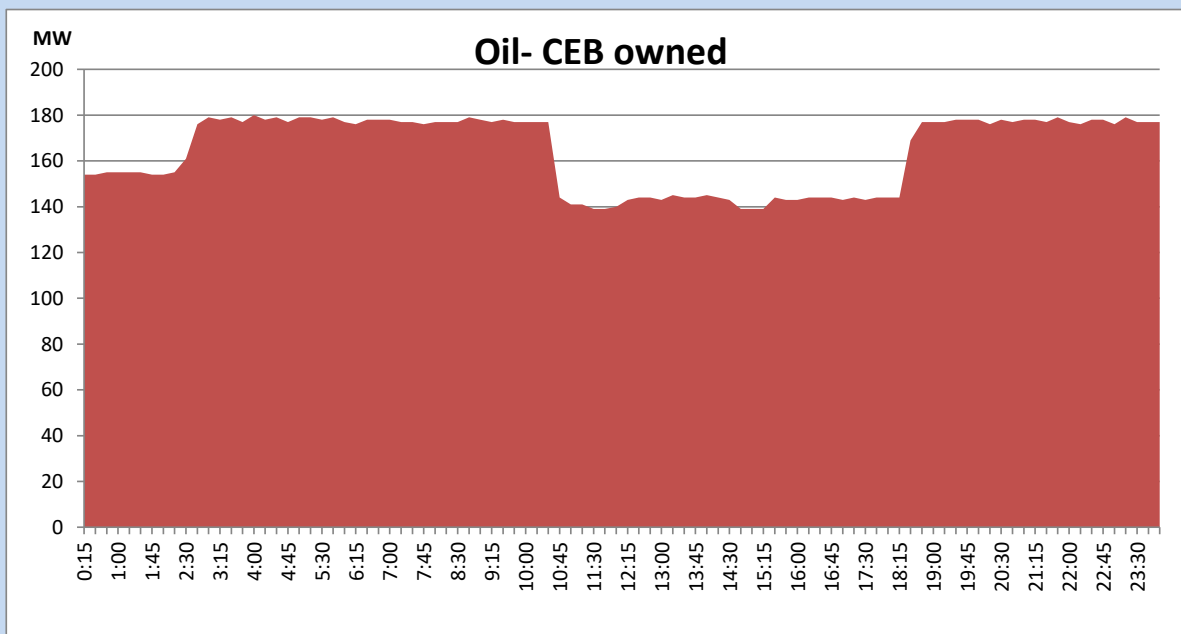
## Coal Generation during the Previous day

July 17, 2022



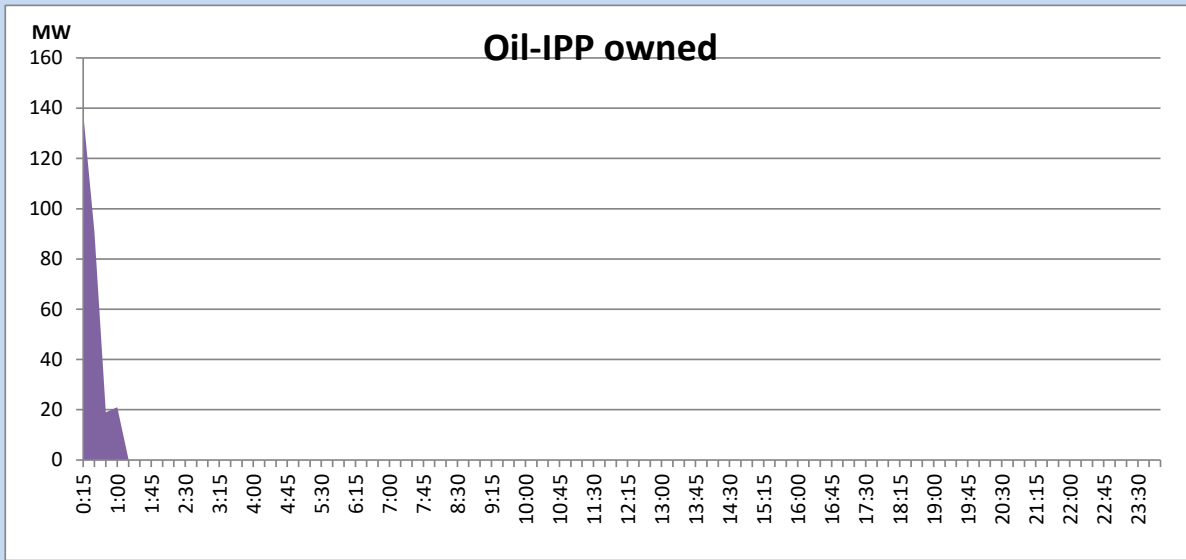
## CEB Oil Plant Generation during the Previous day

July 17, 2022



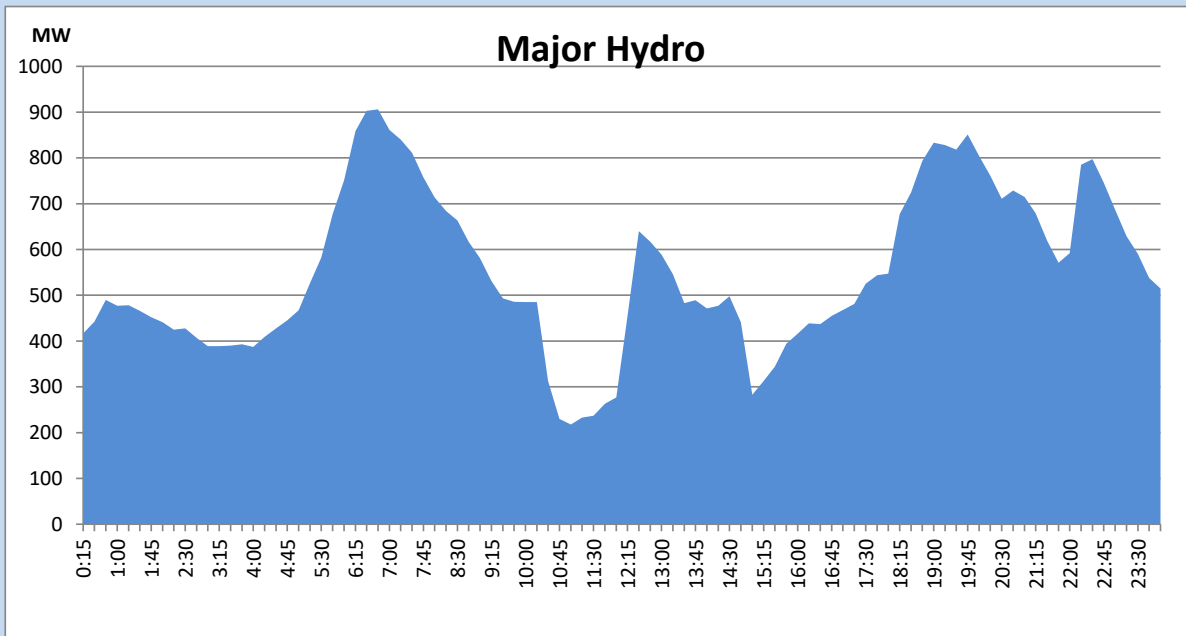
## IPP Oil Plant Generation during the Previous day

July 17, 2022



## Major Hydro Generation during the Previous day

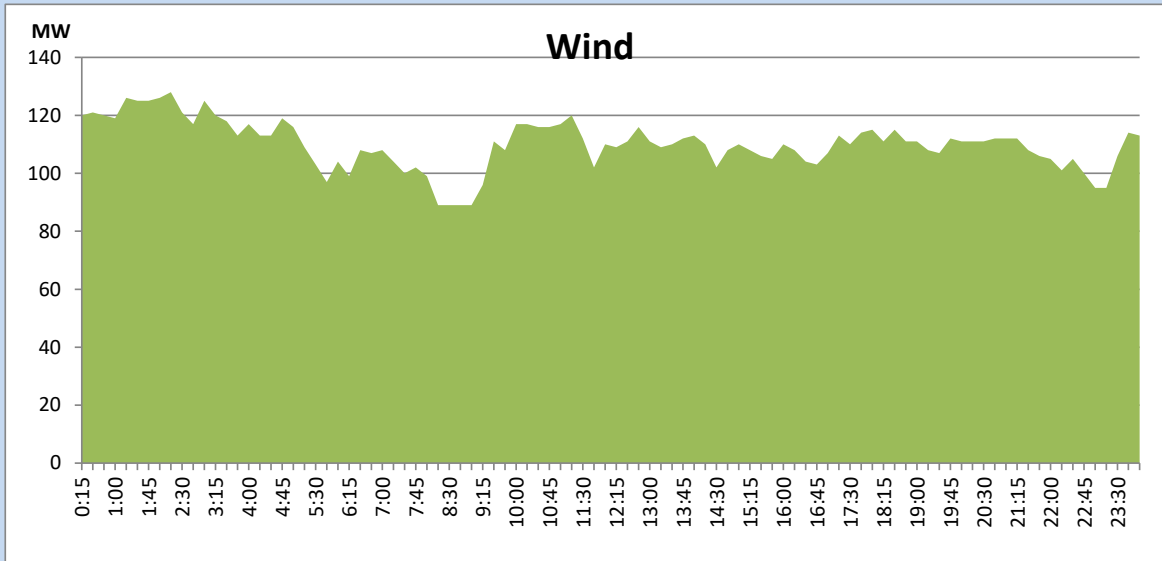
July 17, 2022



## Wind Generation during the Previous day

July 17, 2022

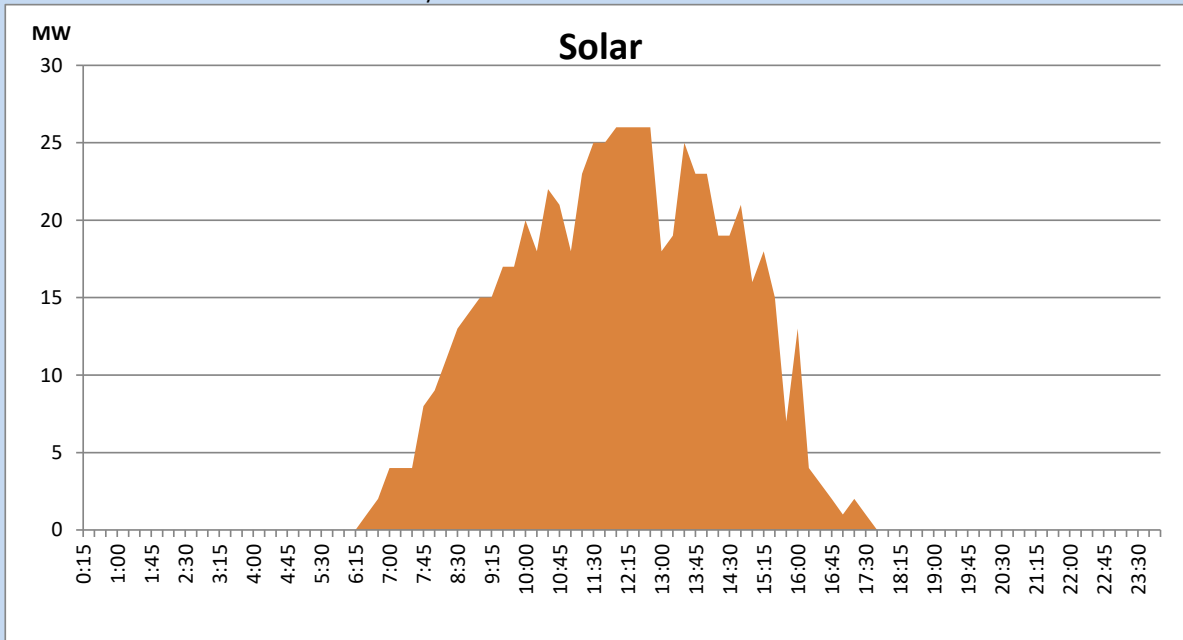
Based on Telemetered Power Stations only



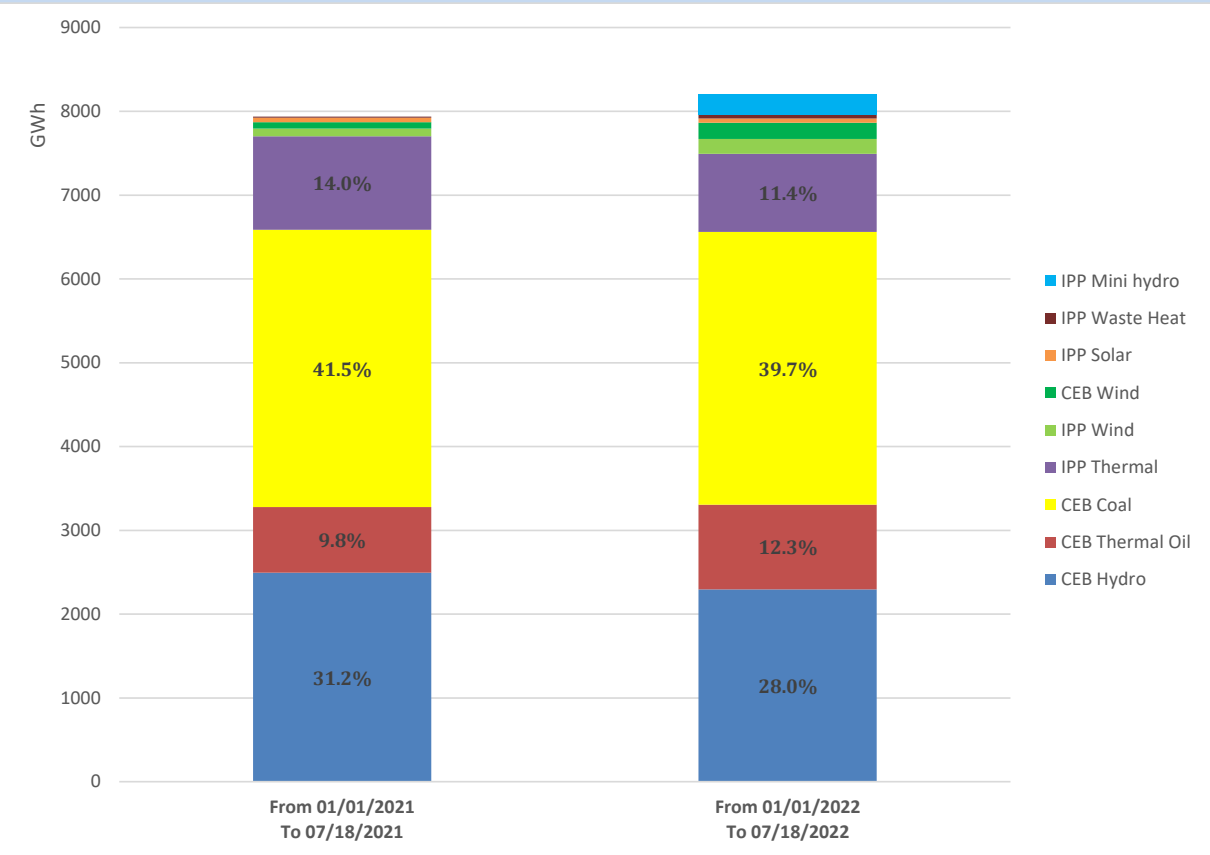
## Solar Generation during the Previous day

July 17, 2022

Based on Telemetered Power Stations only



# Cumulative Dispatch Comparison with Last Year



## Thermal Plant Fuel types

Power Station	Primary Fuel
CEB Thermal	
Sapugaskanda 1	Heavy Fuel
Sapugaskanda 2	Heavy Fuel
Kelanitissa Small Gas Turbines	Auto Diesel
GT 7 - Kelanitissa	Auto Diesel
Kelanitissa CCY	Naphtha or Diesel
Lakvijaya 1	Coal
Lakvijaya 2	Coal
Lakvijaya 3	Coal
Uthuru Janani	Heavy Fuel
Barge CEB	Heavy Fuel

Power Station	Primary Fuel
Private Thermal	
Sojitz - Kelanitissa	Auto Diesel
West Coast	Auto Diesel / Heavy Fuel
ACE Matara	Heavy Fuel
ACE Embilipitiya	Heavy Fuel

## Major Incidents during the day -as reported by CEB morning of

July 19, 2022

- 1) Rotational manual load shedding was carried out from 05:30 hrs to 08:30 hrs and 13:00 hrs to 22:00 hrs.
- 2) Uthuru Janani PS made forced shutdown at 17:32 hrs due to lack of fuel.