

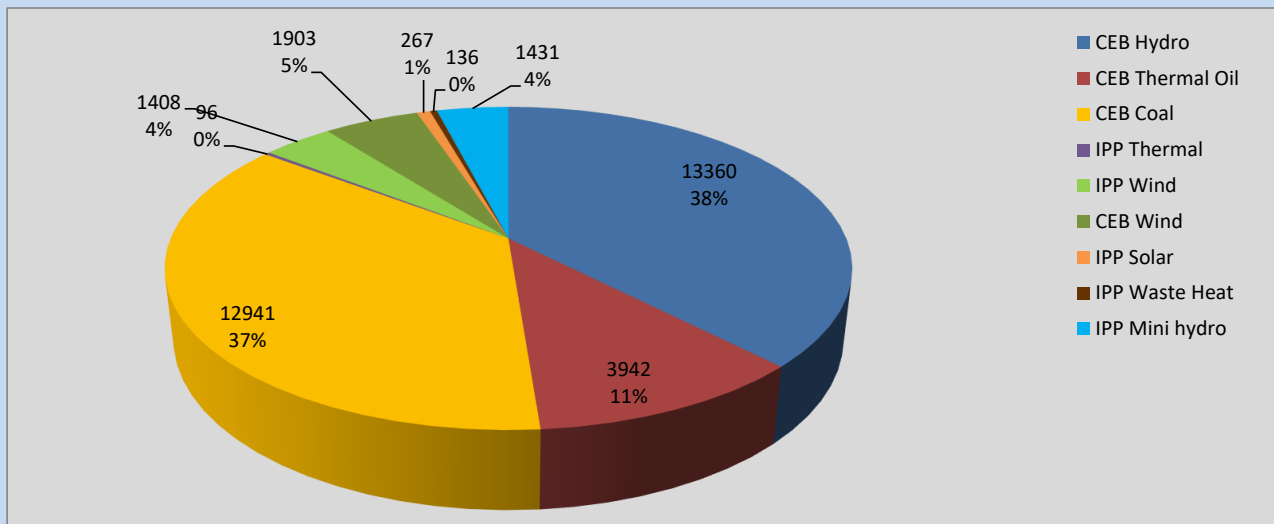
Generation and Reservoirs Statistics

July 17, 2022



PUBLIC UTILITIES COMMISSION OF SRI LANKA

Daily Generation Mix in MWh



Total Generation **35,484 MWh**

Note: Above data is excluding contribution from Roof Top Solar, 1MW Solar and certain Mini Hydro plants

Cumulative Dispatch

Note: Following data is Excluding contribution from Roof Top Solar, 1MW solar and Mini Hydro plants

For Current Month

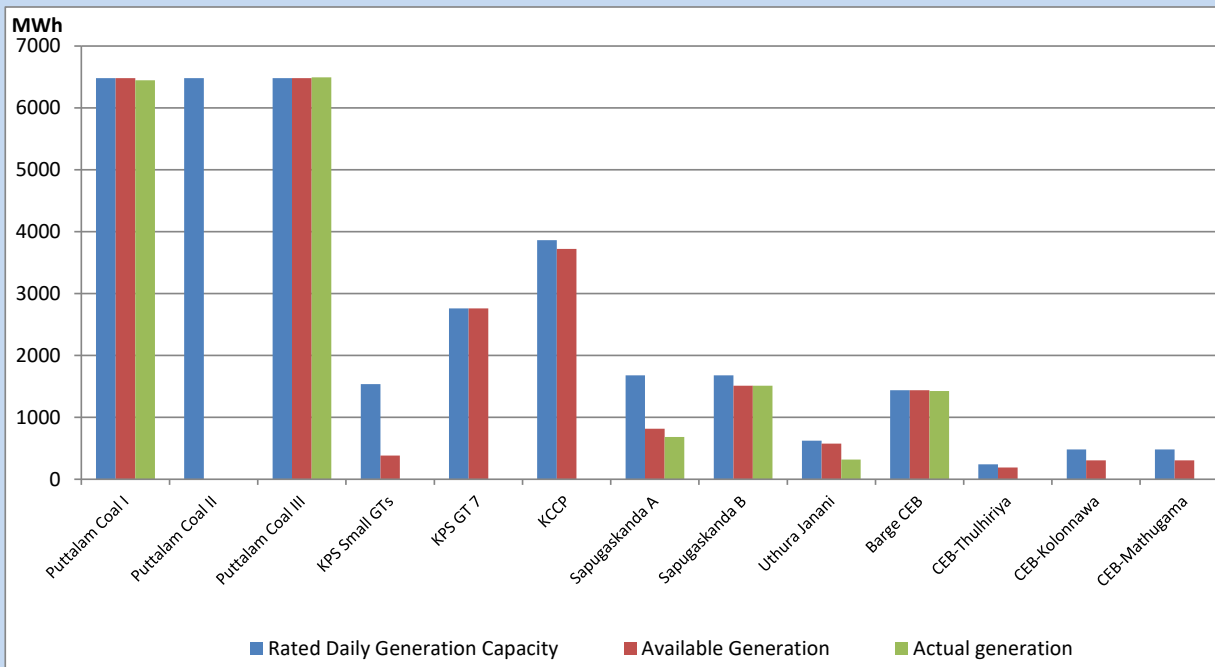
Category	Dispatch (GWh)	Percentage
CEB Hydro	227.79	34.85%
CEB Thermal Oil	67.52	10.33%
CEB Coal	211.34	32.33%
IPP Thermal	57.44	8.79%
SPP Wind	26.88	4.11%
CEB Wind	26.99	4.13%
SPP Solar	4.63	0.71%
SPP Solid Waste	4.11	0.63%
Mini Hydro	26.95	4.12%
Total	653.65	

For Current Year

Category	Dispatch (GWh)	Percentage
CEB Hydro	2,279.1	27.93%
CEB Thermal Oil	1,007.6	12.35%
CEB Coal	3,239.6	39.70%
IPP Thermal	929.0	11.38%
SPP Wind	176.8	2.17%
CEB Wind	192.9	2.36%
SPP Solar	51.1	0.63%
SPP Solid Waste	42.6	0.52%
Mini Hydro	242.6	2.97%
Total	8,161.0	

CEB owned Thermal Plant Dispatch

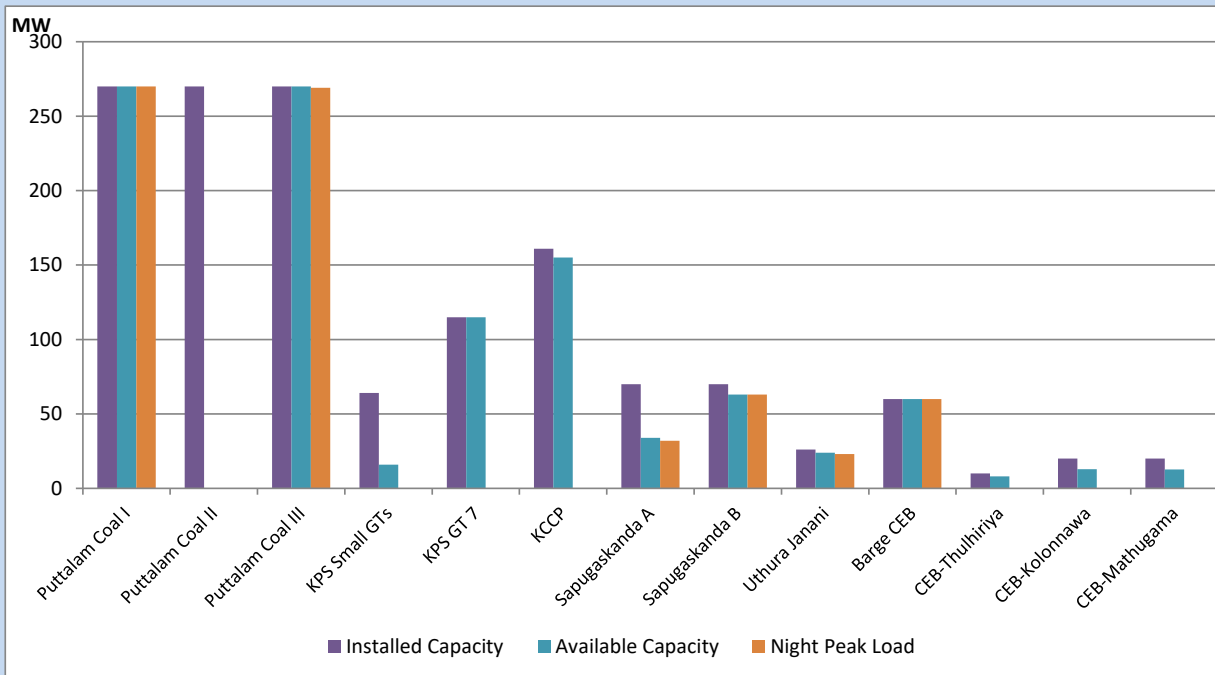
July 17, 2022



Available Generation is estimated based on plant availability at 6.00am on

July 18, 2022

CEB owned Thermal Plant Loading at the Night Peak



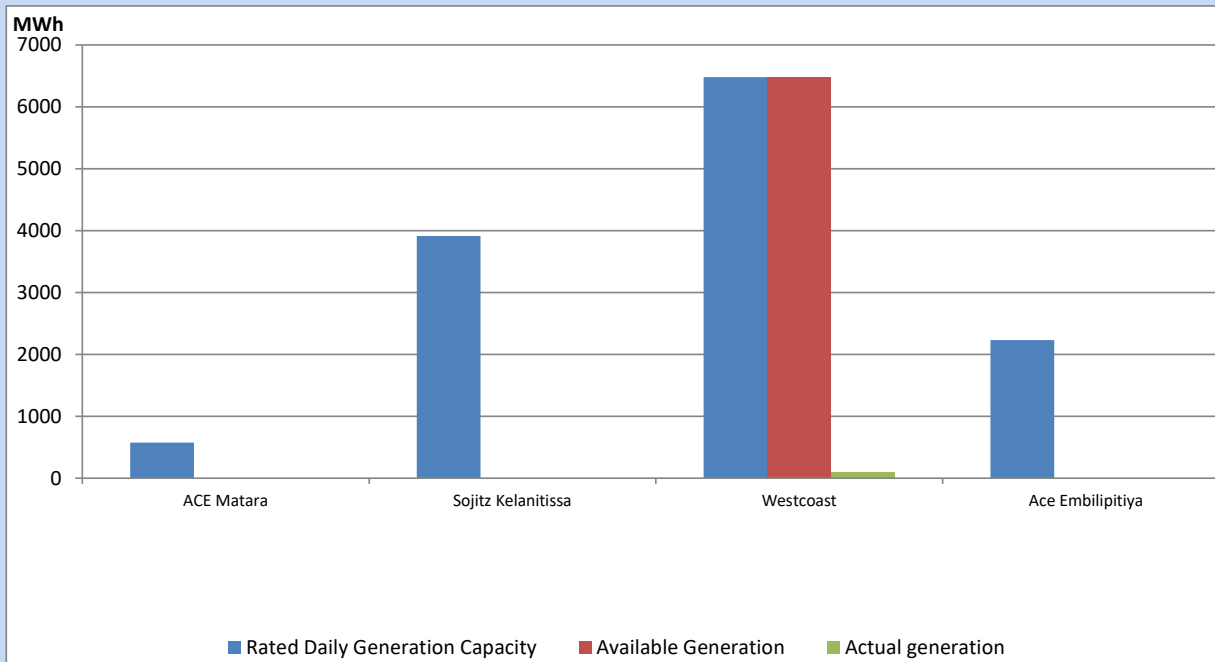
Note- Plant availability is recorded at 6.00 am on

July 18, 2022

IPP owned Thermal Plant Dispatch

July 17, 2022

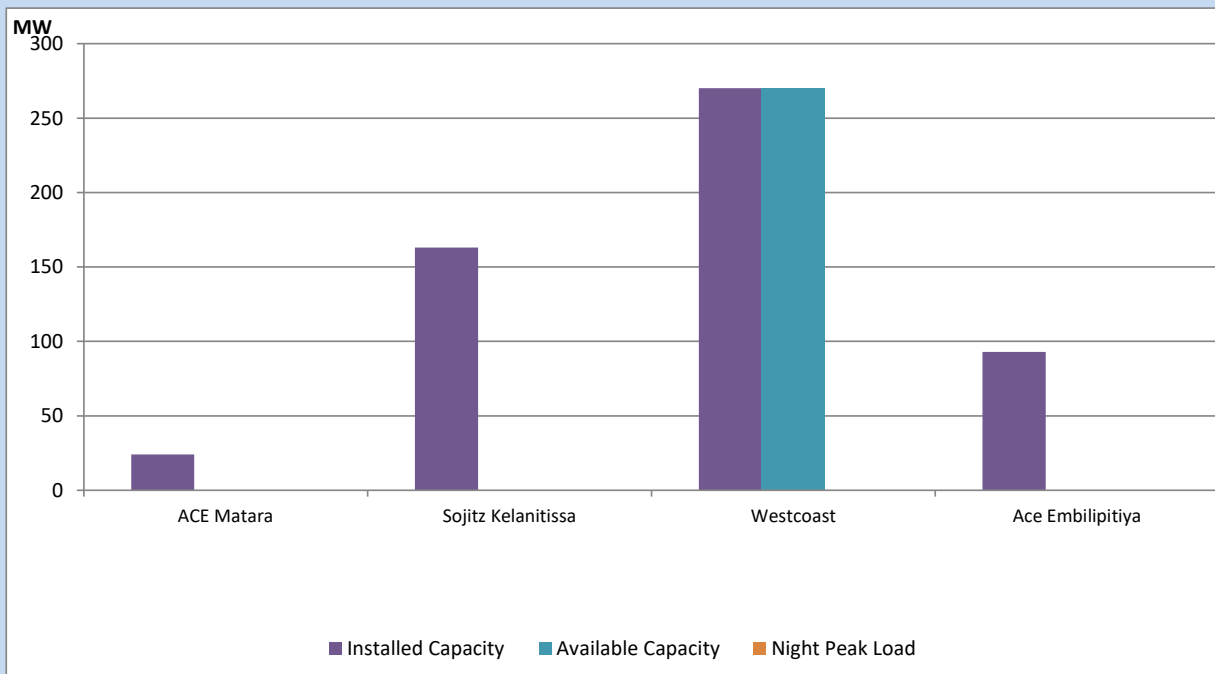
Asia Power, V Power Pallekale, Vpower Galle, V Power Horana, Vpower Hambantota, Vpower Valachchena and Altaqa Mahiyanganaya are not available due to expiration of PPAs



Available Generation is estimated based on plant availability at 6.00am on

July 18, 2022

IPP owned Thermal Plant Loading at the Night Peak

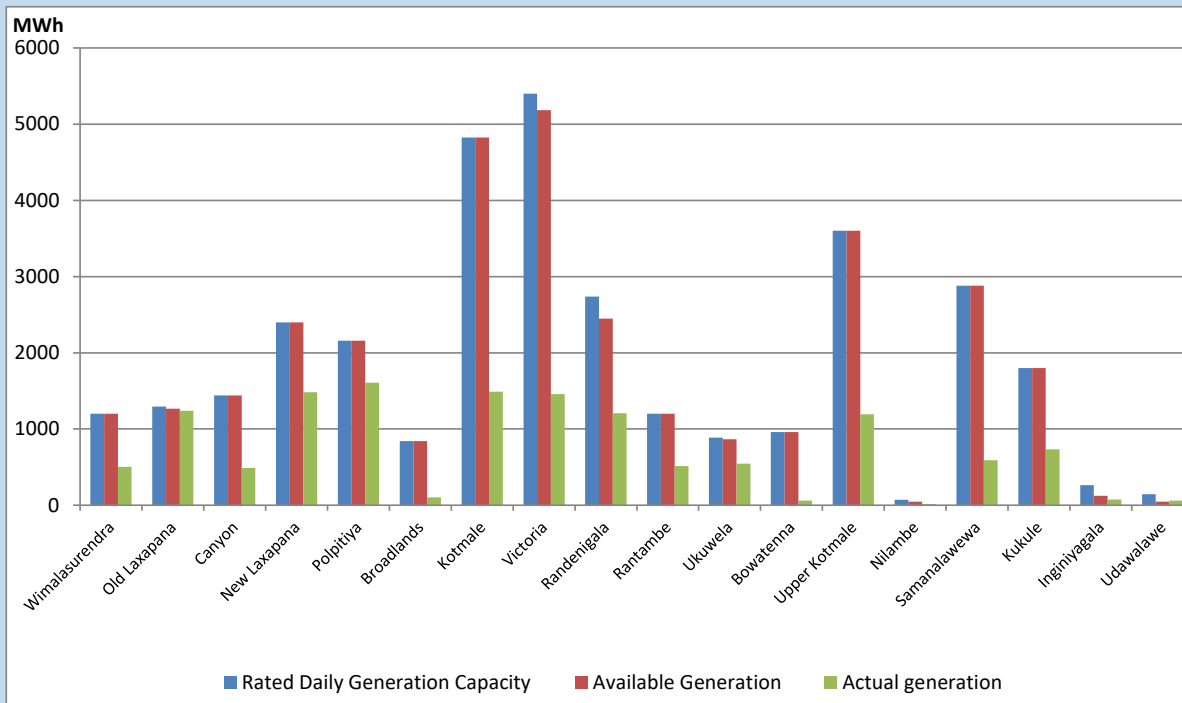


Note- Plant availability is recorded at 6.00 am on

July 18, 2022

Major Hydro Plant Dispatch

July 17, 2022

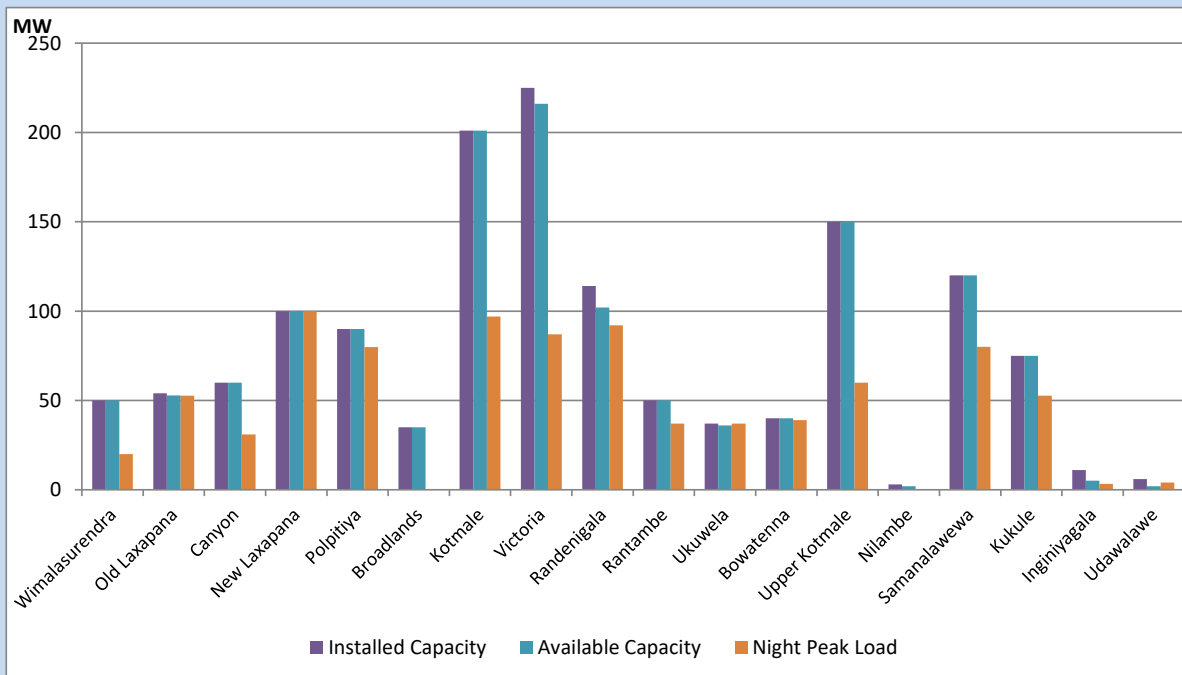


Available Generation is estimated based on plant availability at 6.00am on
Broadlands power plant is operating in the Commissioning Stage

July 18, 2022

Major Hydro Plant Loading at Night Peak

July 17, 2022



Note- Plant availability is recorded at 6.00 am on
Broadlands power plant is operating in the Commissioning Stage

July 18, 2022

Summary of Major Plant performance

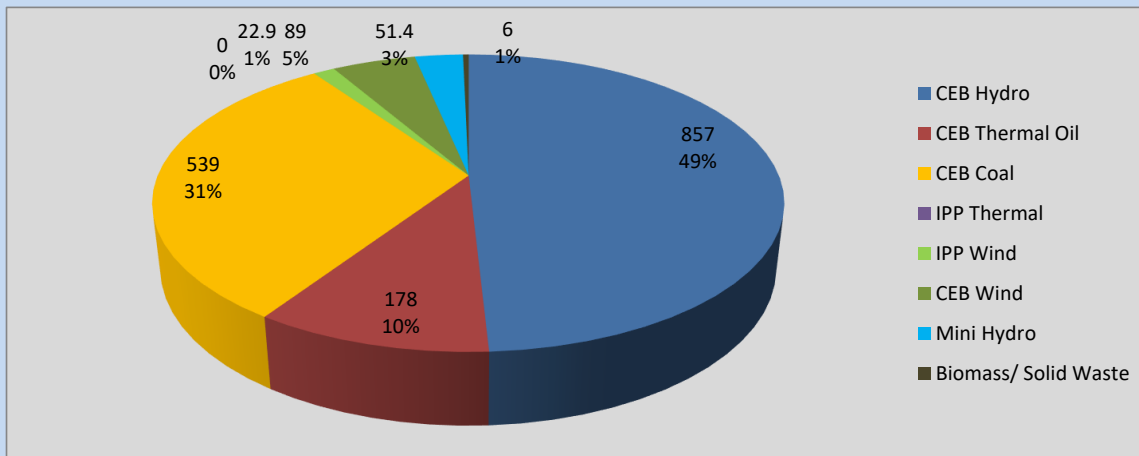
Plant	Installed Capacity	Plant Availability	Night peak Load	Plant Dispatch
	(MW)	(MW)	(MW)	(MWh)
Wimalasurendra	50	50	20	503
Old Laxapana	54	53	53	1,239
Canyon	60	60	31	488
New Laxapana	100	100	100	1,483
Polpitiya	90	90	80	1,607
Broadlands	35	35	0	102
Kotmale	201	201	97	1,490
Victoria	225	216	87	1,459
Randenigala	114	102	92	1,208
Rantambe	50	50	37	512
Ukuwela	37	36	37	544
Bowatenna	40	40	39	60
Upper Kotmale	150	150	60	1,192
Nilambe	3	2	0	14
Samanalawewa	120	120	80	590
Kukule	75	75	53	732
Inginiyagala	11	5	3	76
Udawalawe	6	2	4	61
Puttalam Coal I	270	270	270	6,447
Puttalam Coal II	270	0	0	0
Puttalam Coal III	270	270	269	6,494
KPS Small GTs	64	16	0	0
KPS GT 7	115	115	0	0
KCCP	161	155	0	0
Sapugaskanda A	70	34	32	685
Sapugaskanda B	70	63	63	1,510
Uthura Janani	26	24	23	320
Barge CEB	60	60	60	1,427
CEB-Thulhiriya	10	8	0	0
CEB-Kolonnawa	20	13	0	0
CEB-Mathugama	20	13	0	0
ACE Matara	24	0	0	0
Sojitz Kelanitissa	163	0	0	0
West Coast	270	270	0	96
ACE Embilipitiya	93	0	0	0
Total	3,397	2,697	1,759	35,484

Plant availability is the availability recorded at 6 am on

July 18, 2022

Contribution to the Night Peak in MW

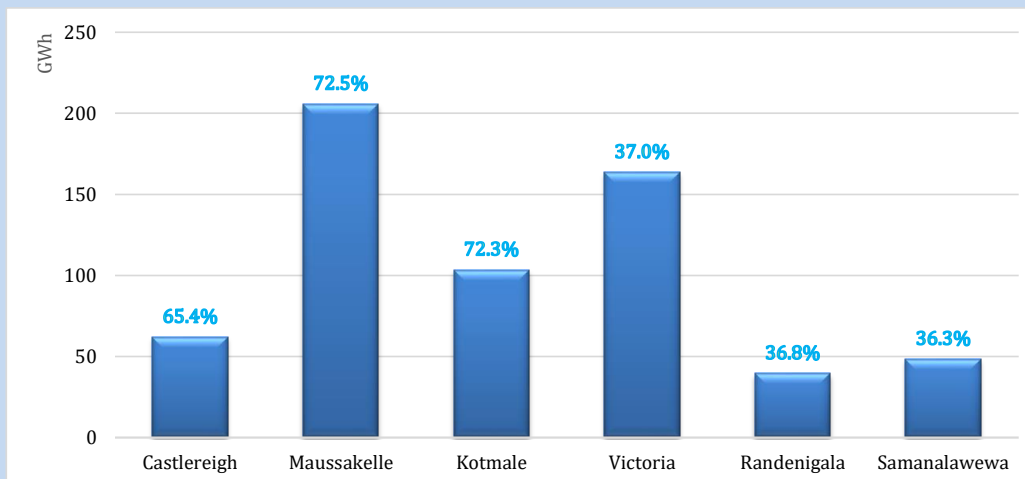
July 17, 2022



Night Peak*	1,742.8 MW
Day Peak	1,547.2 MW
Minimum Demand	1,289.7 MW

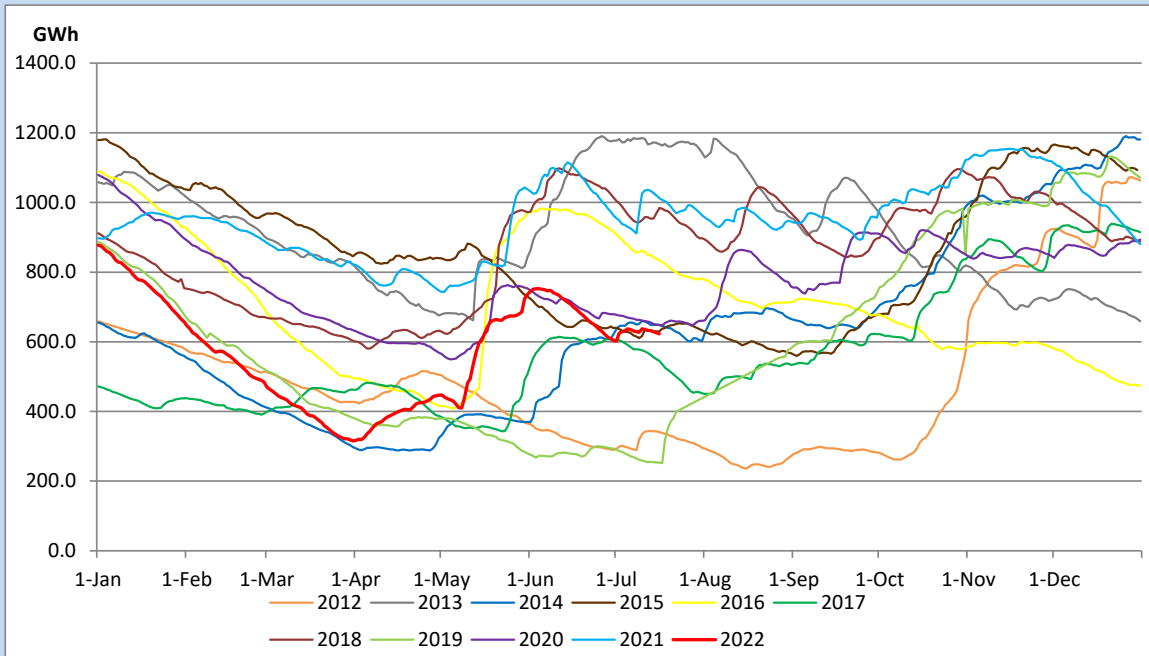
Above figures are excluding contribution from Roof Top Solar, 1MW solar, certain Wind plants and Mini Hydro plants

Reservoir Levels - as at 06.00 Hr on July 18, 2022

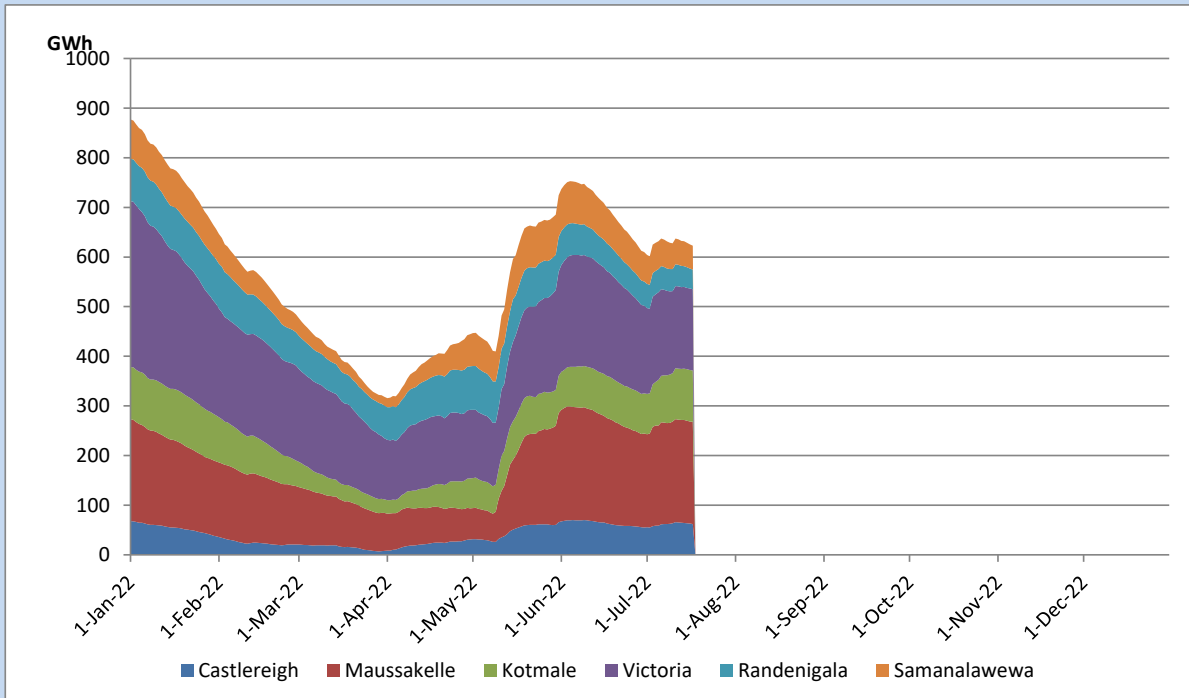


Total Reservoir Level	622.8 GWh
% of Total capacity	51.7%

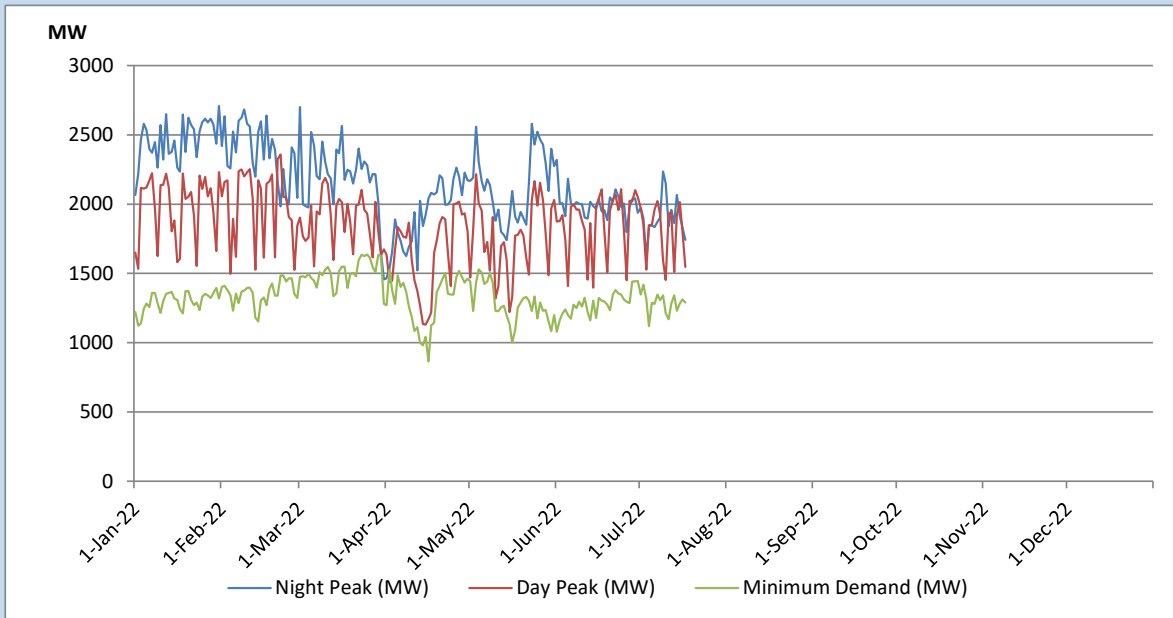
Comparison of Total Reservoir Storage Levels with Past Years



Variation of Major Hydro Reservoir Levels in the current year (GWh)



Variation of Demand during the current year

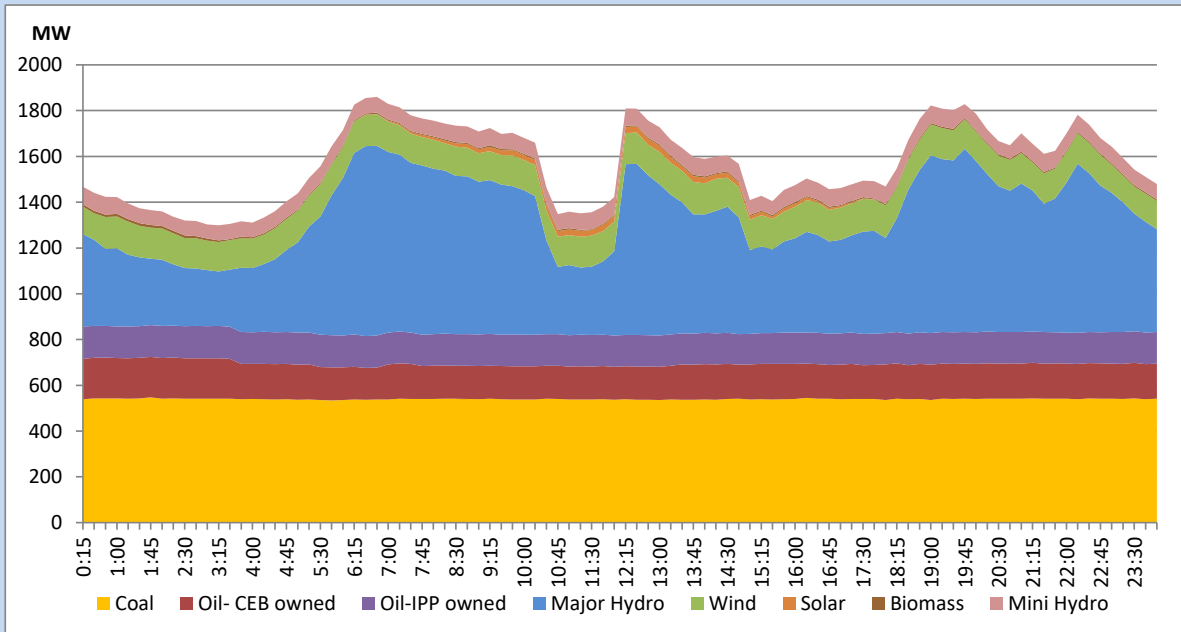


The above figures are excluding contribution from Roof Top Solar, 1MW solar, certain Wind plants and Mini Hydro plants

Daily Load Curve of the Previous day

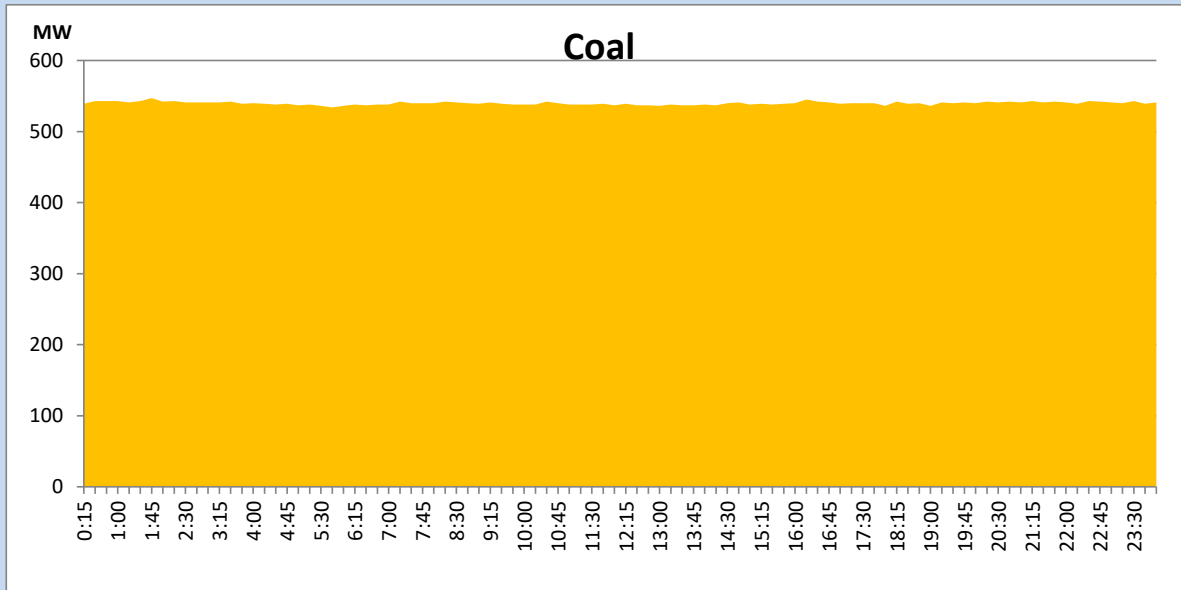
July 16, 2022

Solar and wind data is based on Telemetered Power Stations only



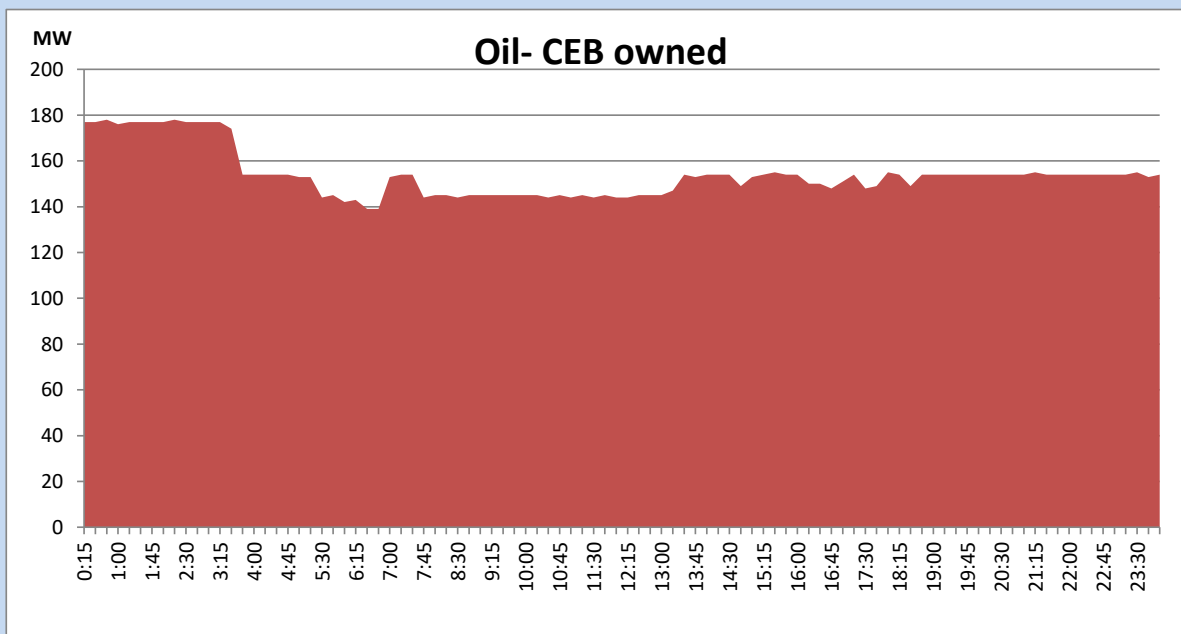
Coal Generation during the Previous day

July 16, 2022



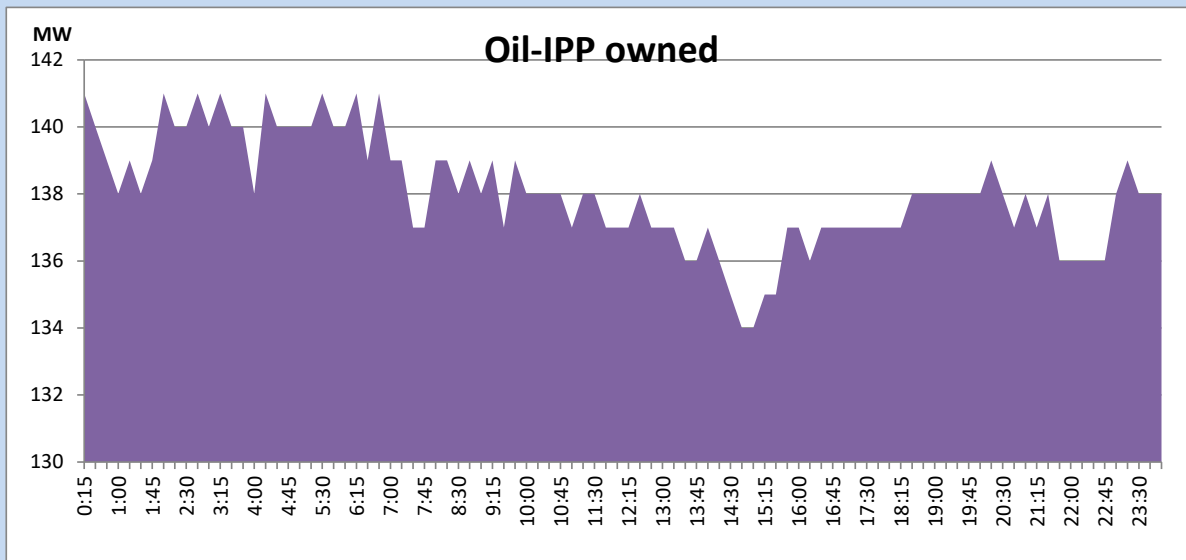
CEB Oil Plant Generation during the Previous day

July 16, 2022



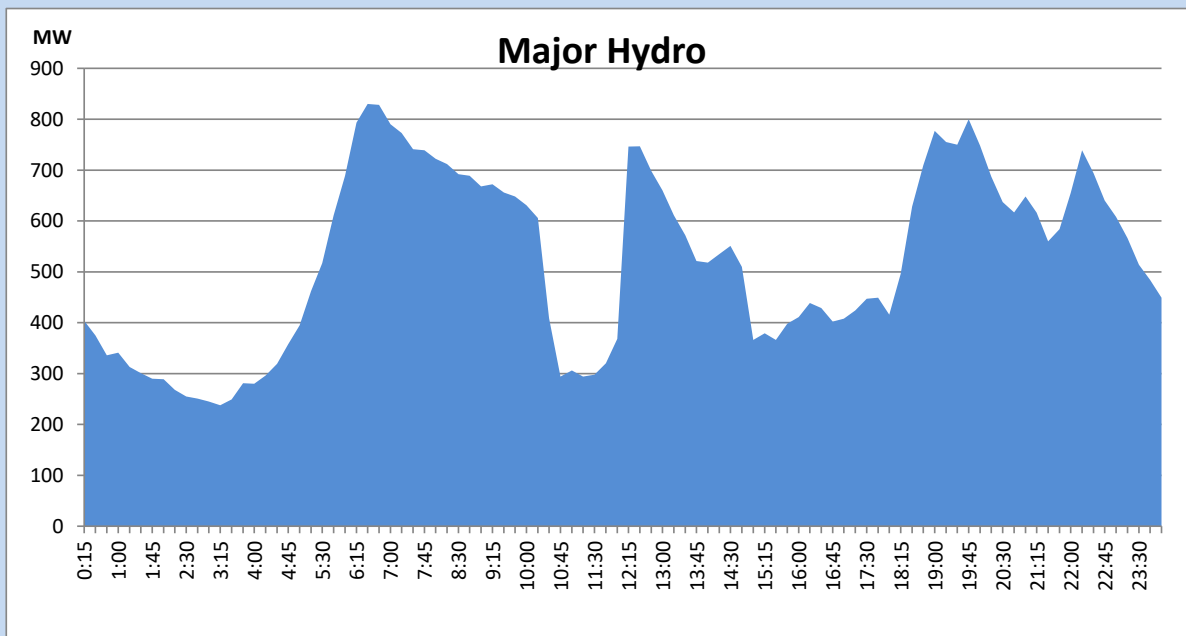
IPP Oil Plant Generation during the Previous day

July 16, 2022



Major Hydro Generation during the Previous day

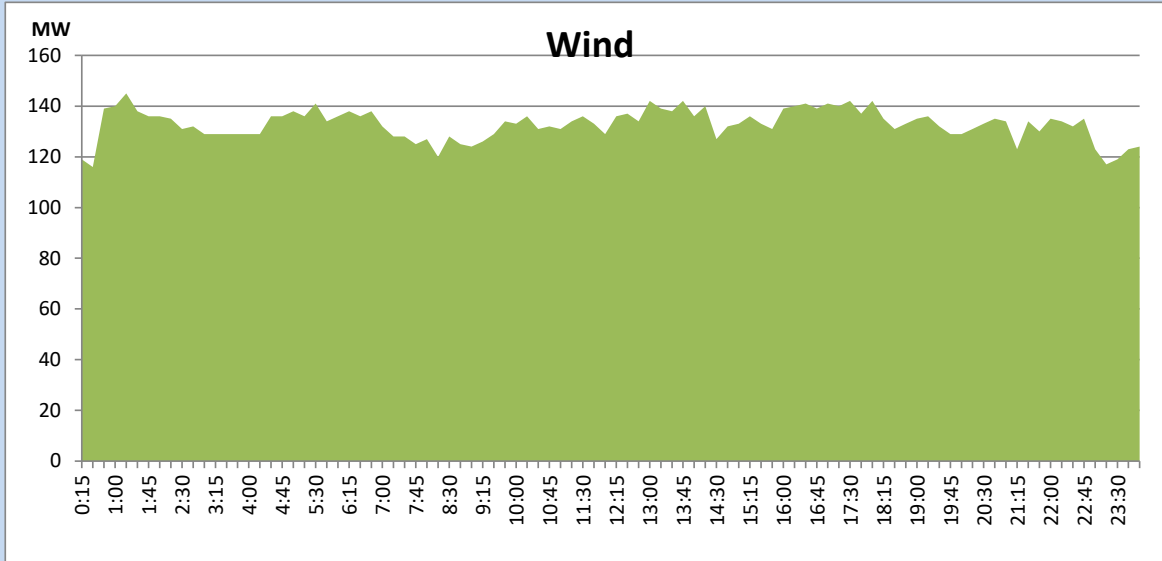
July 16, 2022



Wind Generation during the Previous day

July 16, 2022

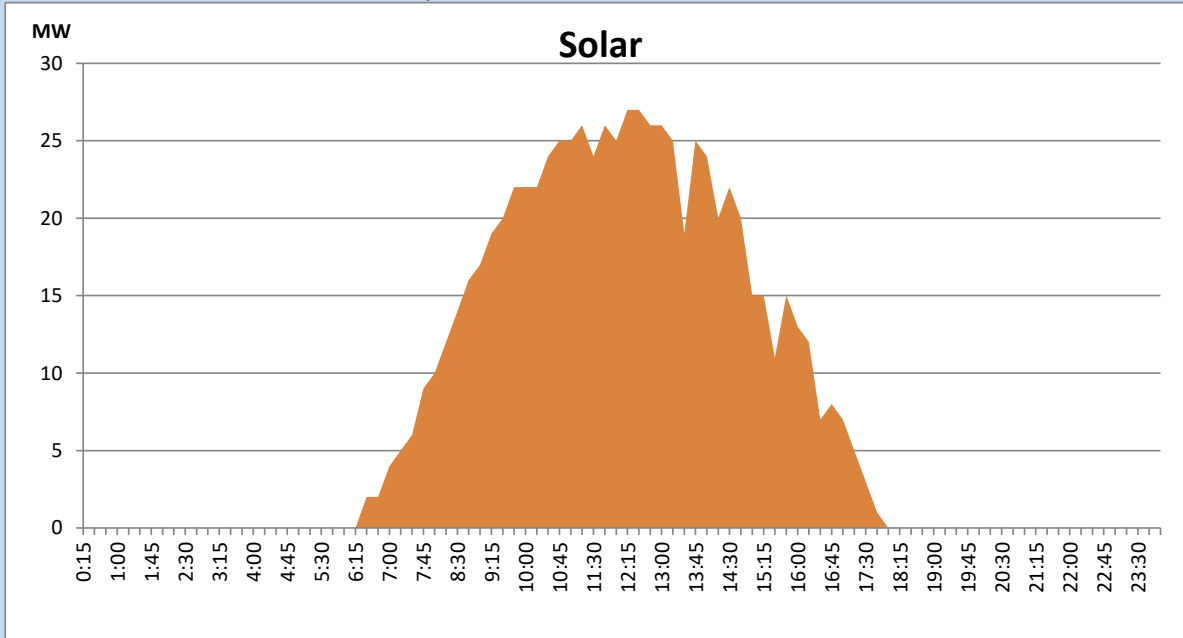
Based on Telemetered Power Stations only



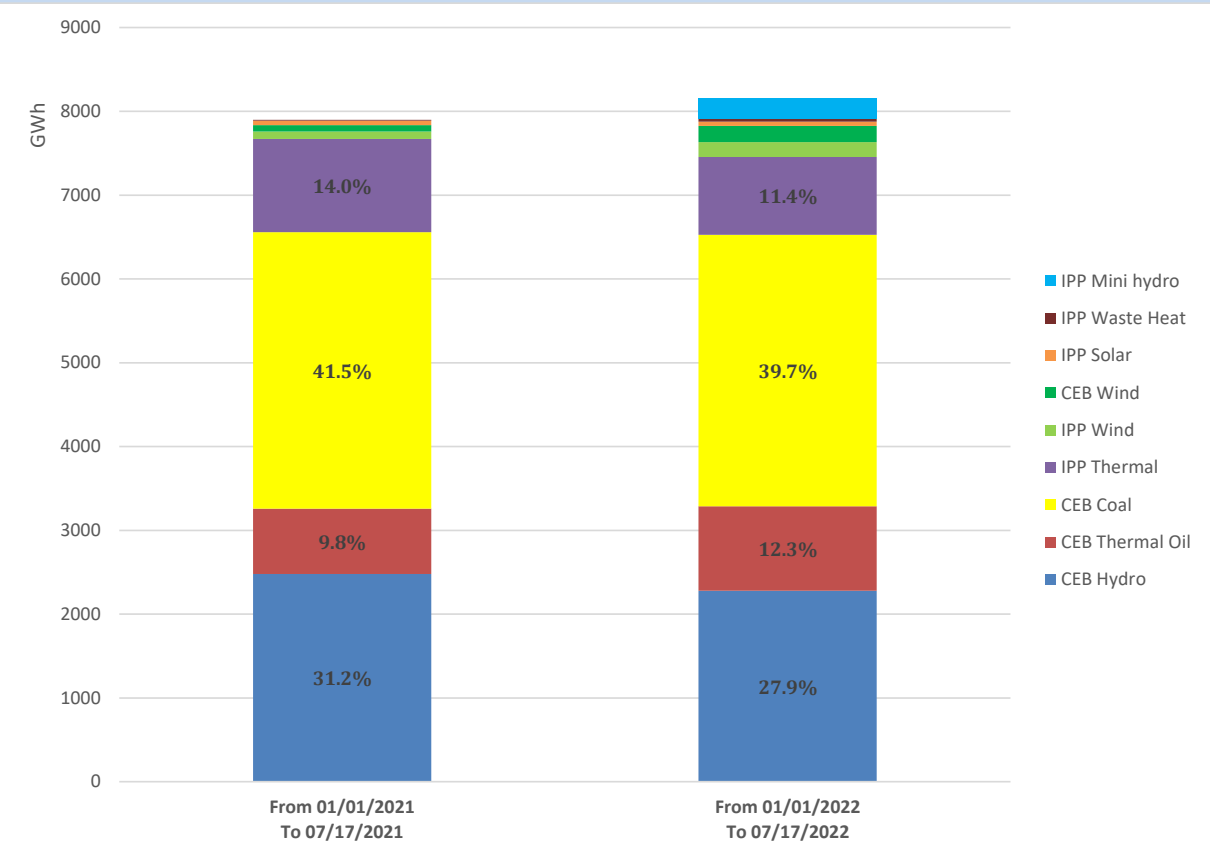
Solar Generation during the Previous day

July 16, 2022

Based on Telemetered Power Stations only



Cumulative Dispatch Comparison with Last Year



Thermal Plant Fuel types

Power Station	Primary Fuel
CEB Thermal	
Sapugaskanda 1	Heavy Fuel
Sapugaskanda 2	Heavy Fuel
Kelanitissa Small Gas Turbines	Auto Diesel
GT 7 - Kelanitissa	Auto Diesel
Kelanitissa CCY	Naphtha or Diesel
Lakvijaya 1	Coal
Lakvijaya 2	Coal
Lakvijaya 3	Coal
Uthuru Janani	Heavy Fuel
Barge CEB	Heavy Fuel

Power Station	Primary Fuel
Private Thermal	
Sojitz - Kelanitissa	Auto Diesel
West Coast	Auto Diesel / Heavy Fuel
ACE Matara	Heavy Fuel
ACE Embilipitiya	Heavy Fuel

Major Incidents during the day -as reported by CEB morning of

July 18, 2022

- 1) Rotational manual load shedding was carried out from 10:20hrs to 12:00hrs and 14:40 hrs to 22:00 hrs.