

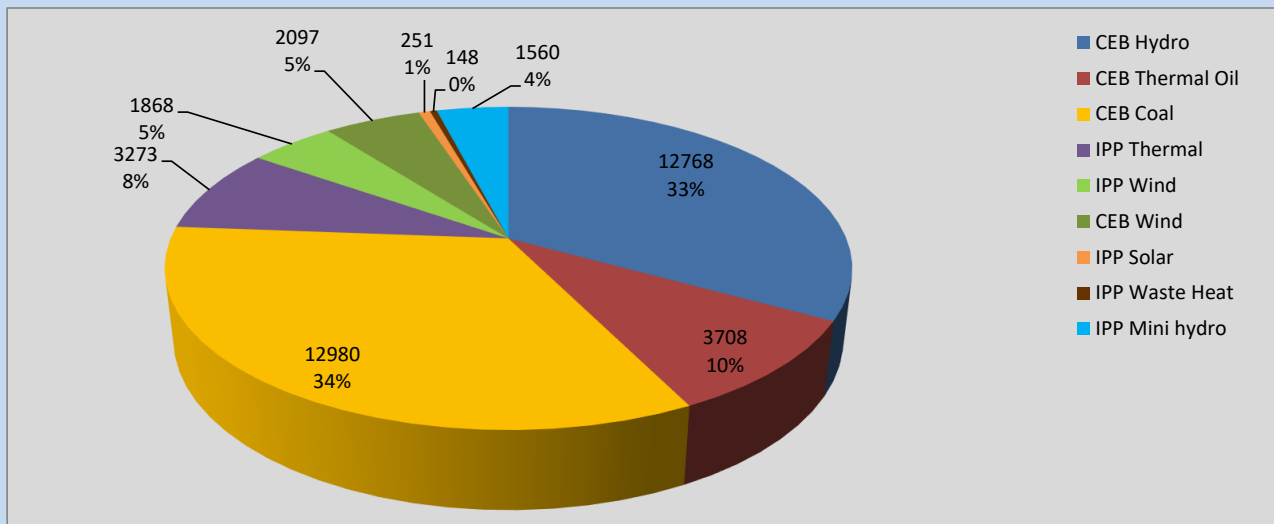
Generation and Reservoirs Statistics

July 16, 2022



PUBLIC UTILITIES COMMISSION OF SRI LANKA

Daily Generation Mix in MWh



Total Generation **38,653 MWh**

Note: Above data is excluding contribution from Roof Top Solar, 1MW Solar and certain Mini Hydro plants

Cumulative Dispatch

Note: Following data is Excluding contribution from Roof Top Solar, 1MW solar and Mini Hydro plants

For Current Month

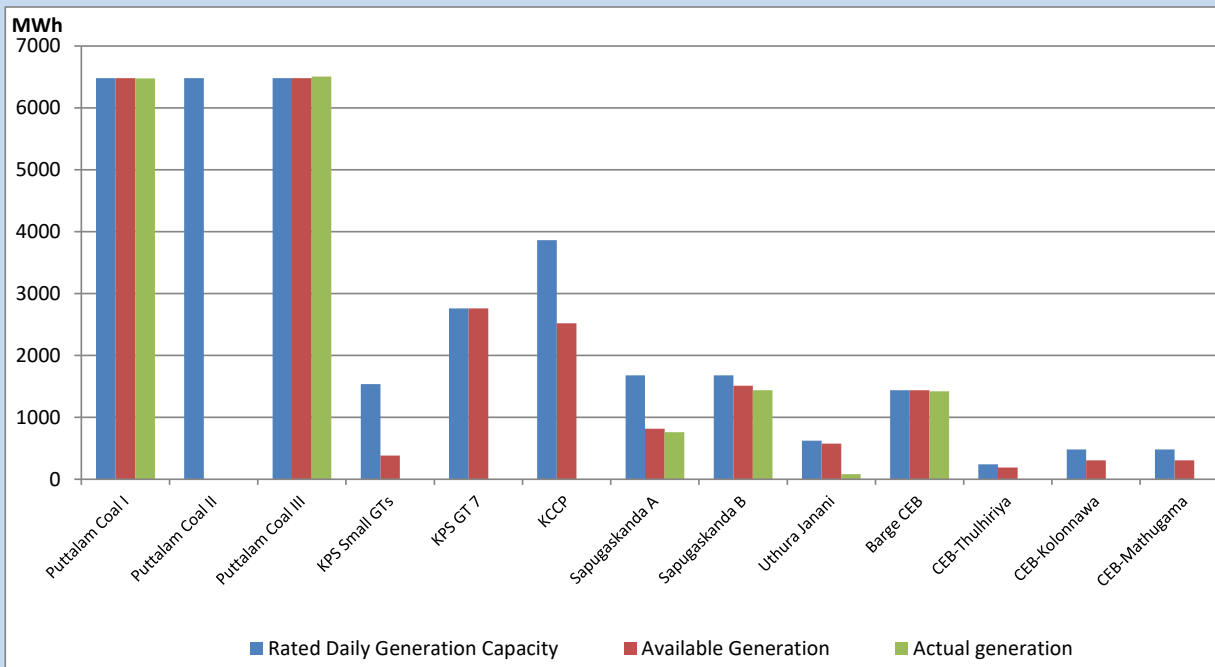
Category	Dispatch (GWh)	Percentage
CEB Hydro	214.43	34.69%
CEB Thermal Oil	63.58	10.29%
CEB Coal	198.40	32.10%
IPP Thermal	57.34	9.28%
SPP Wind	25.47	4.12%
CEB Wind	25.09	4.06%
SPP Solar	4.36	0.71%
SPP Solid Waste	3.97	0.64%
Mini Hydro	25.52	4.13%
Total	618.16	

For Current Year

Category	Dispatch (GWh)	Percentage
CEB Hydro	2,265.8	27.88%
CEB Thermal Oil	1,003.7	12.35%
CEB Coal	3,226.7	39.71%
IPP Thermal	928.9	11.43%
SPP Wind	175.4	2.16%
CEB Wind	191.0	2.35%
SPP Solar	50.8	0.63%
SPP Solid Waste	42.5	0.52%
Mini Hydro	241.1	2.97%
Total	8,125.5	

CEB owned Thermal Plant Dispatch

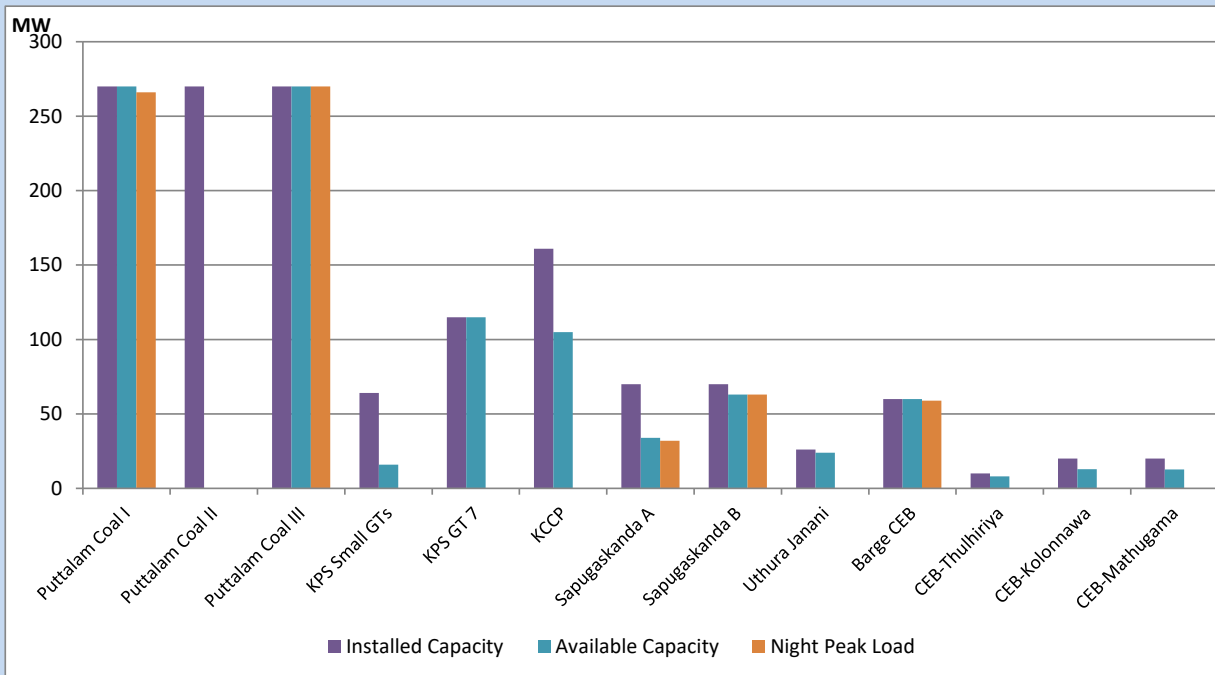
July 16, 2022



Available Generation is estimated based on plant availability at 6.00am on

July 17, 2022

CEB owned Thermal Plant Loading at the Night Peak



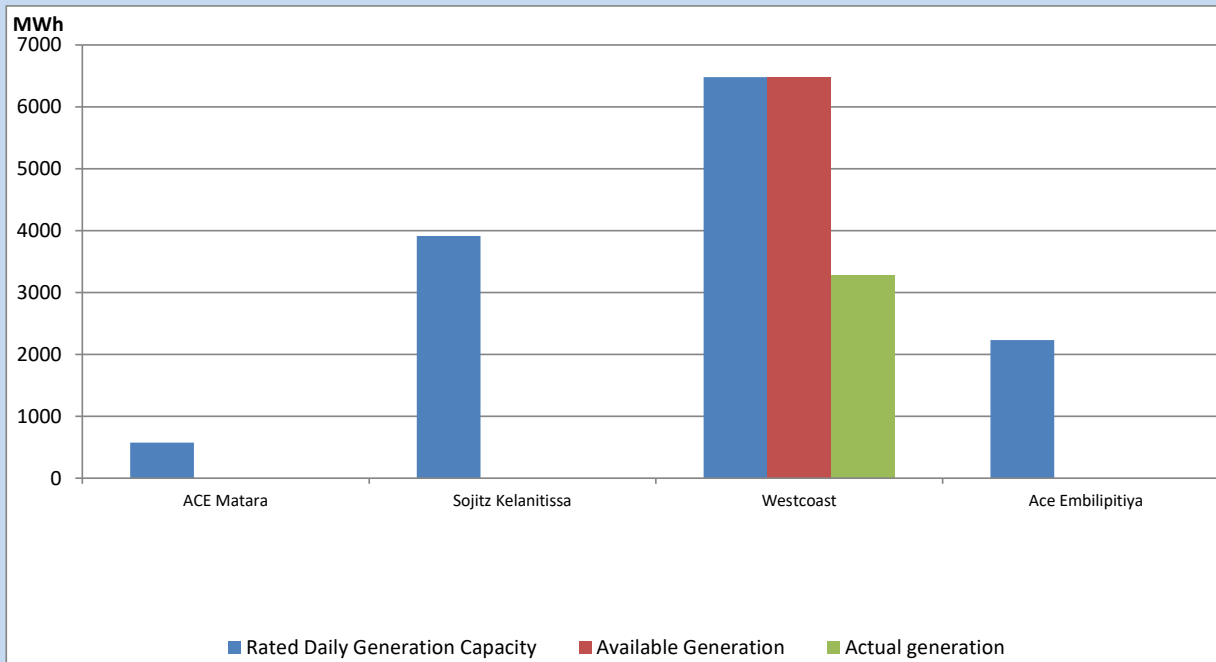
Note- Plant availability is recorded at 6.00 am on

July 17, 2022

IPP owned Thermal Plant Dispatch

July 16, 2022

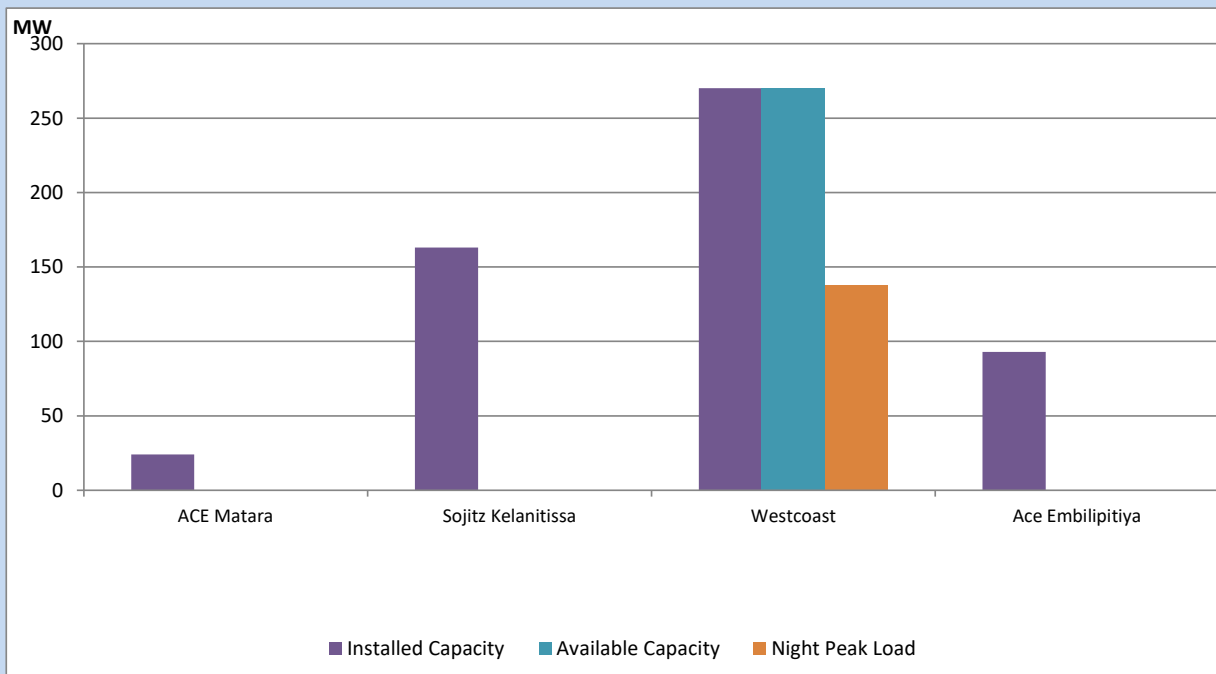
Asia Power, V Power Pallekale, Vpower Galle, V Power Horana, Vpower Hambantota, Vpower Valachchena and Altaqa Mahiyanganaya are not available due to expiration of PPAs



Available Generation is estimated based on plant availability at 6.00am on

July 17, 2022

IPP owned Thermal Plant Loading at the Night Peak

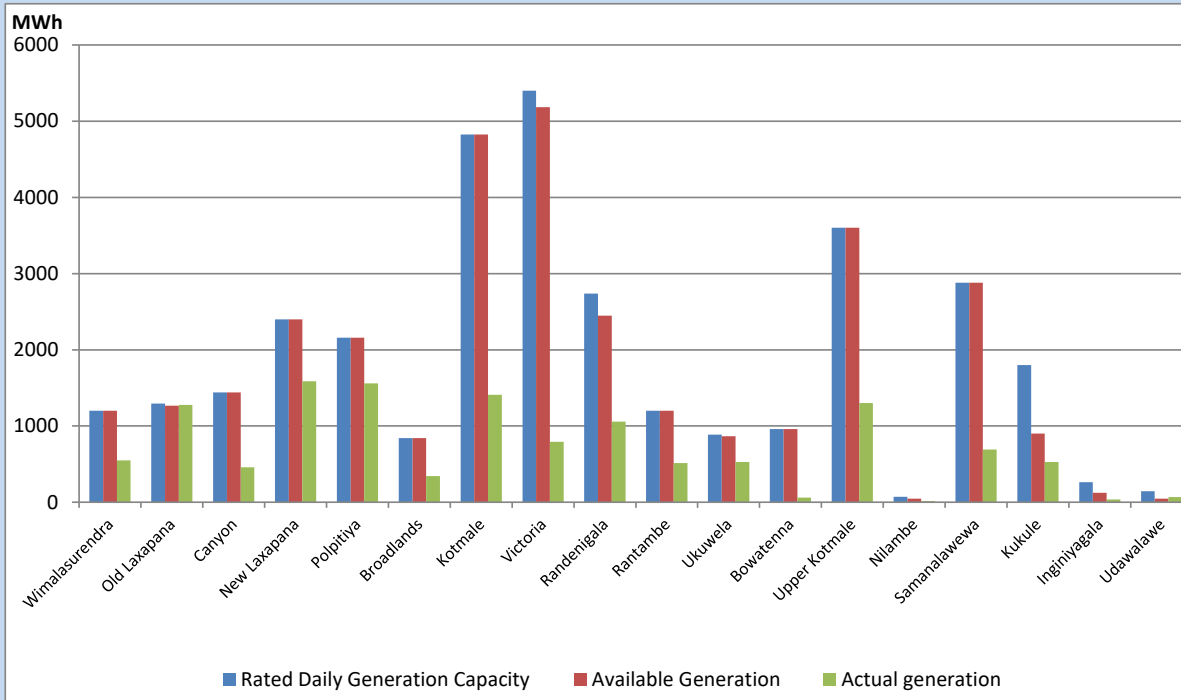


Note- Plant availability is recorded at 6.00 am on

July 17, 2022

Major Hydro Plant Dispatch

July 16, 2022

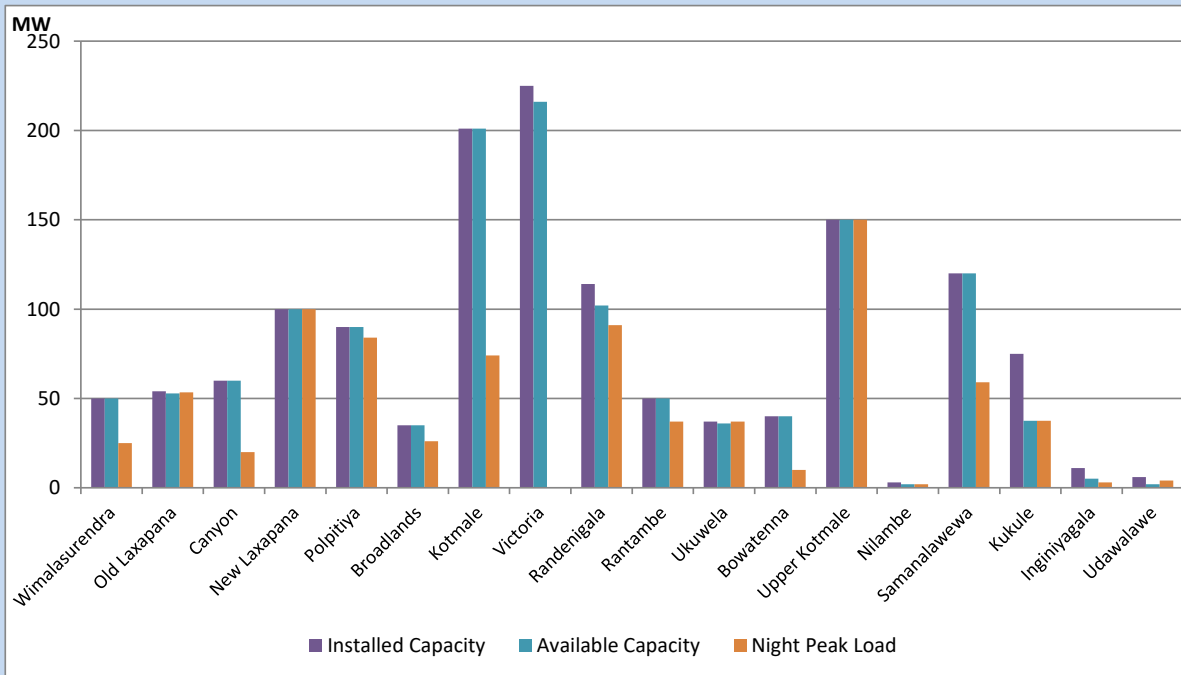


Available Generation is estimated based on plant availability at 6.00am on
Broadlands power plant is operating in the Commissioning Stage

July 17, 2022

Major Hydro Plant Loading at Night Peak

July 16, 2022



Note- Plant availability is recorded at 6.00 am on
Broadlands power plant is operating in the Commissioning Stage

July 17, 2022

Summary of Major Plant performance

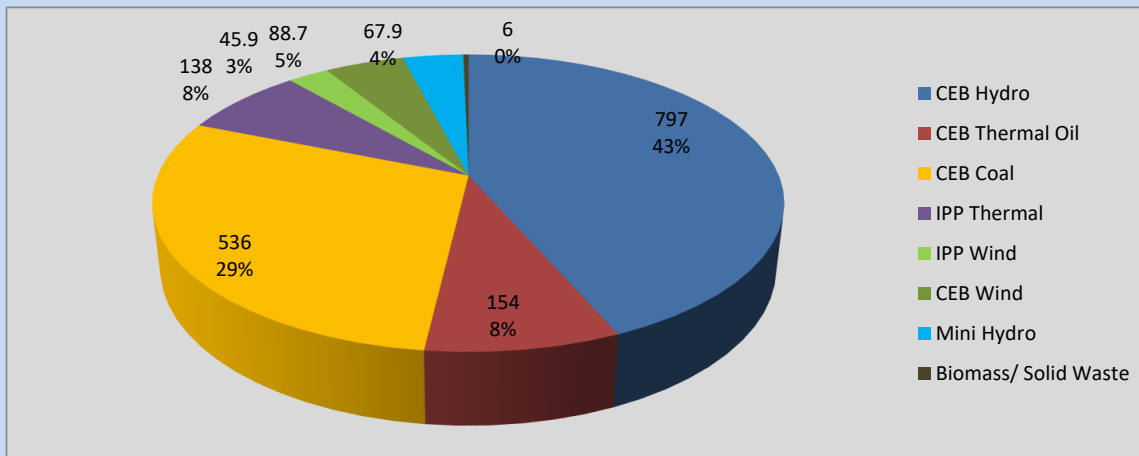
Plant	Installed Capacity	Plant Availability	Night peak Load	Plant Dispatch
	(MW)	(MW)	(MW)	(MWh)
Wimalasurendra	50	50	25	549
Old Laxapana	54	53	53	1,278
Canyon	60	60	20	459
New Laxapana	100	100	100	1,586
Polpitiya	90	90	84	1,558
Broadlands	35	35	26	343
Kotmale	201	201	74	1,410
Victoria	225	216	0	792
Randenigala	114	102	91	1,056
Rantambe	50	50	37	513
Ukuwela	37	36	37	528
Bowatenna	40	40	10	60
Upper Kotmale	150	150	150	1,302
Nilambe	3	2	2	15
Samanalawewa	120	120	59	690
Kukule	75	38	38	527
Inginiyagala	11	5	3	36
Udawalawe	6	2	4	66
Puttalam Coal I	270	270	266	6,475
Puttalam Coal II	270	0	0	0
Puttalam Coal III	270	270	270	6,505
KPS Small GTs	64	16	0	0
KPS GT 7	115	115	0	0
KCCP	161	105	0	0
Sapugaskanda A	70	34	32	762
Sapugaskanda B	70	63	63	1,440
Uthura Janani	26	24	0	83
Barge CEB	60	60	59	1,423
CEB-Thulhiriya	10	8	0	0
CEB-Kolonnawa	20	13	0	0
CEB-Mathugama	20	13	0	0
ACE Matara	24	0	0	0
Sojitz Kelanitissa	163	0	0	0
West Coast	270	270	138	3,273
ACE Embilipitiya	93	0	0	0
Total	3,397	2,610	1,850	38,653

Plant availability is the availability recorded at 6 am on

July 17, 2022

Contribution to the Night Peak in MW

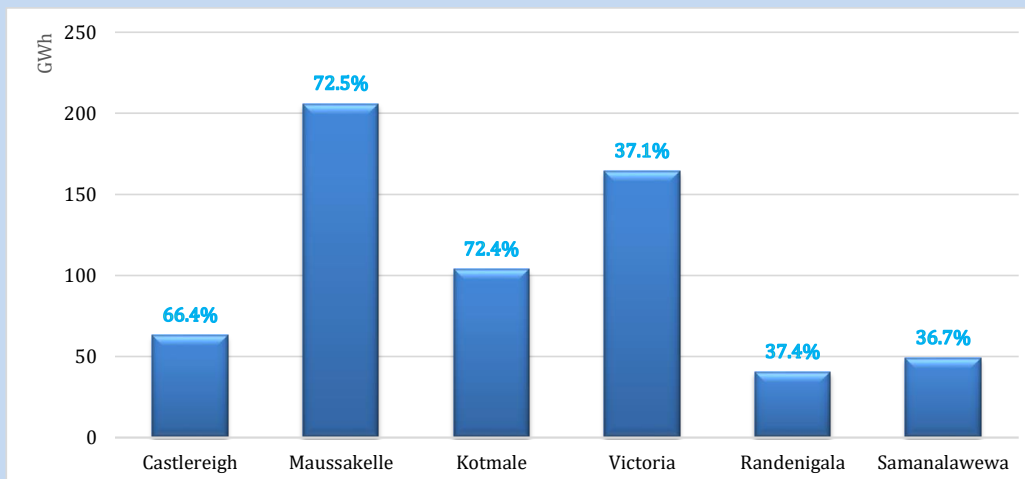
July 16, 2022



Night Peak*	1,833.5 MW
Day Peak	1,807.6 MW
Minimum Demand	1,312.5 MW

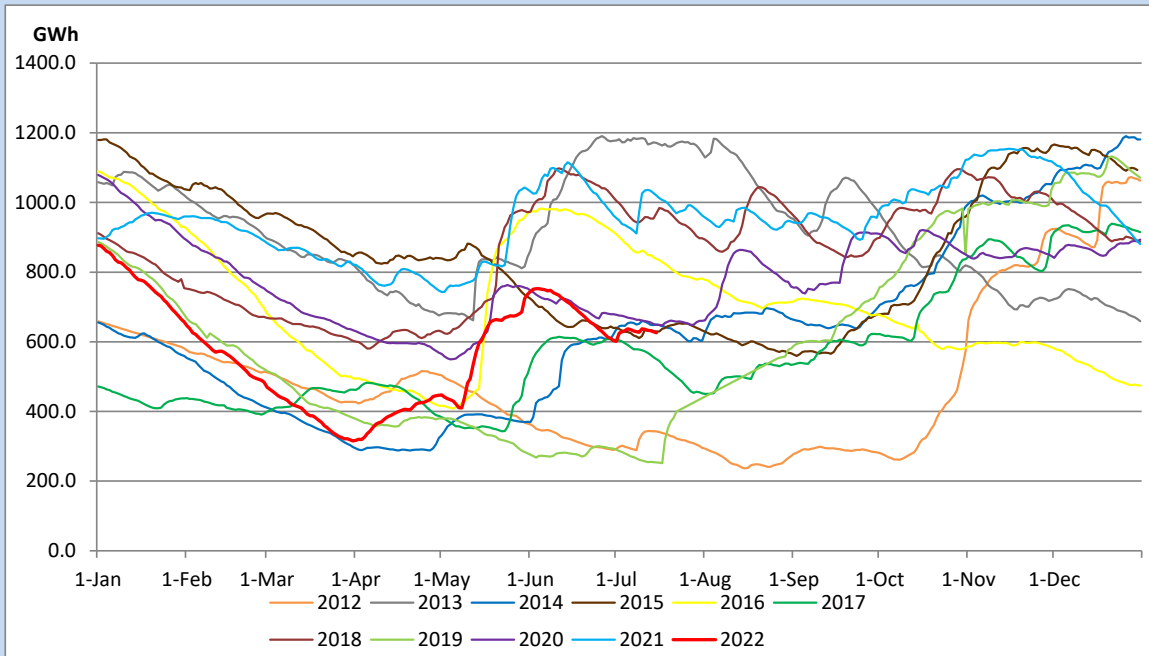
Above figures are excluding contribution from Roof Top Solar, 1MW solar, certain Wind plants and Mini Hydro plants

Reservoir Levels - as at 06.00 Hr on July 17, 2022

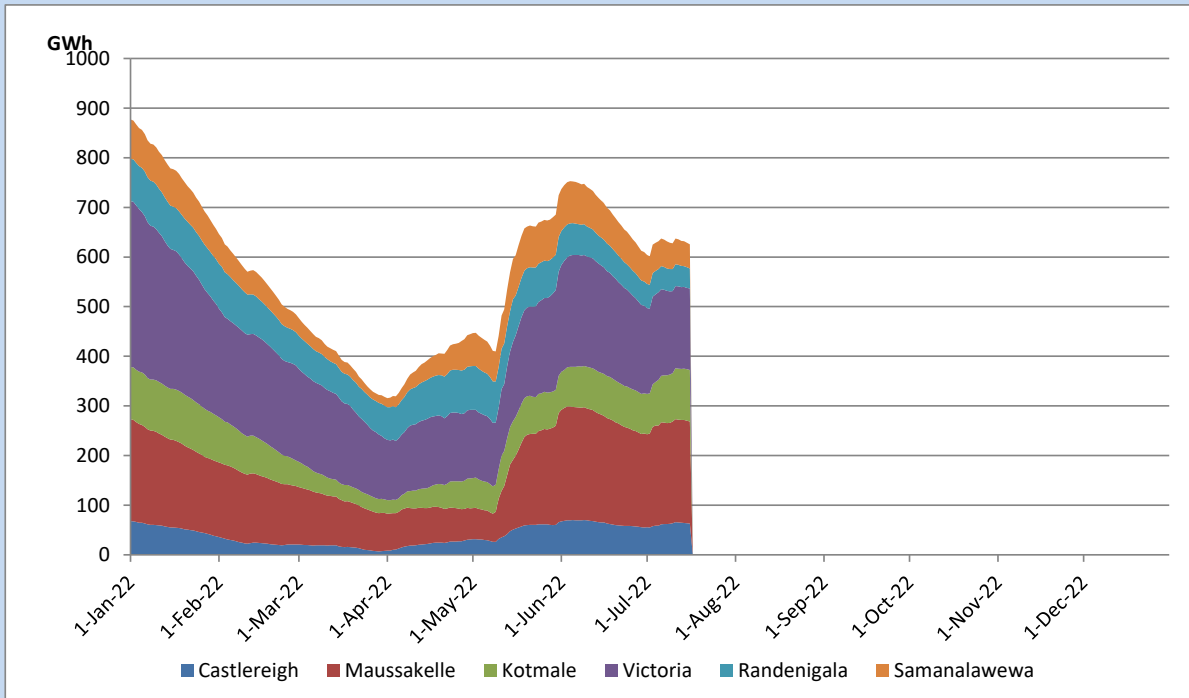


Total Reservoir Level	625.7 GWh
% of Total capacity	51.9%

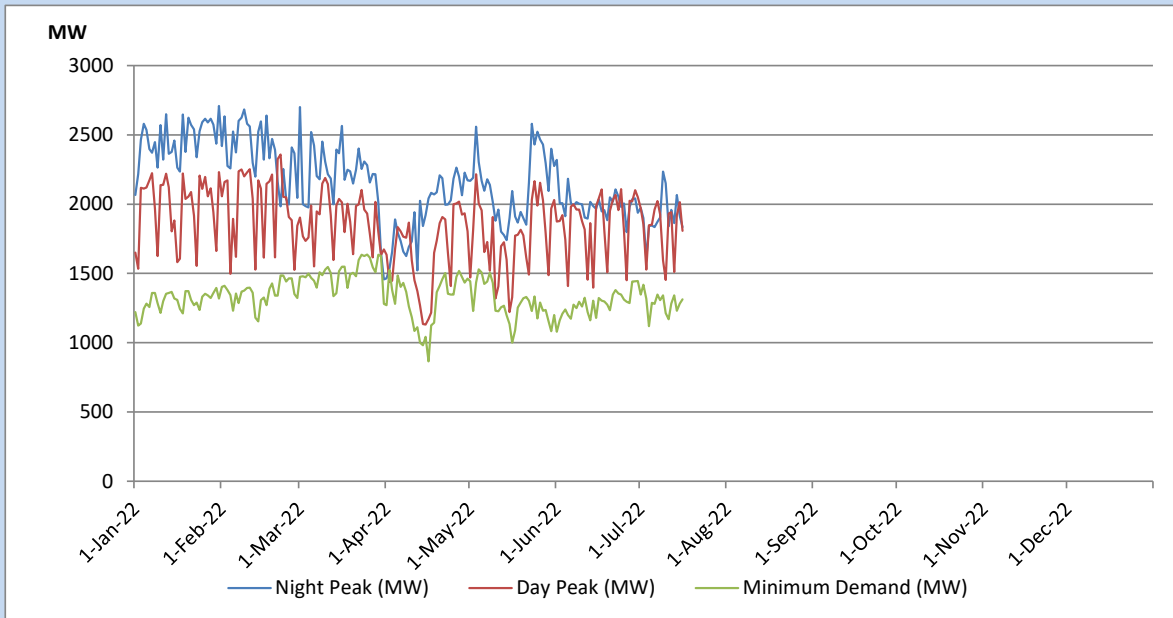
Comparison of Total Reservoir Storage Levels with Past Years



Variation of Major Hydro Reservoir Levels in the current year (GWh)



Variation of Demand during the current year

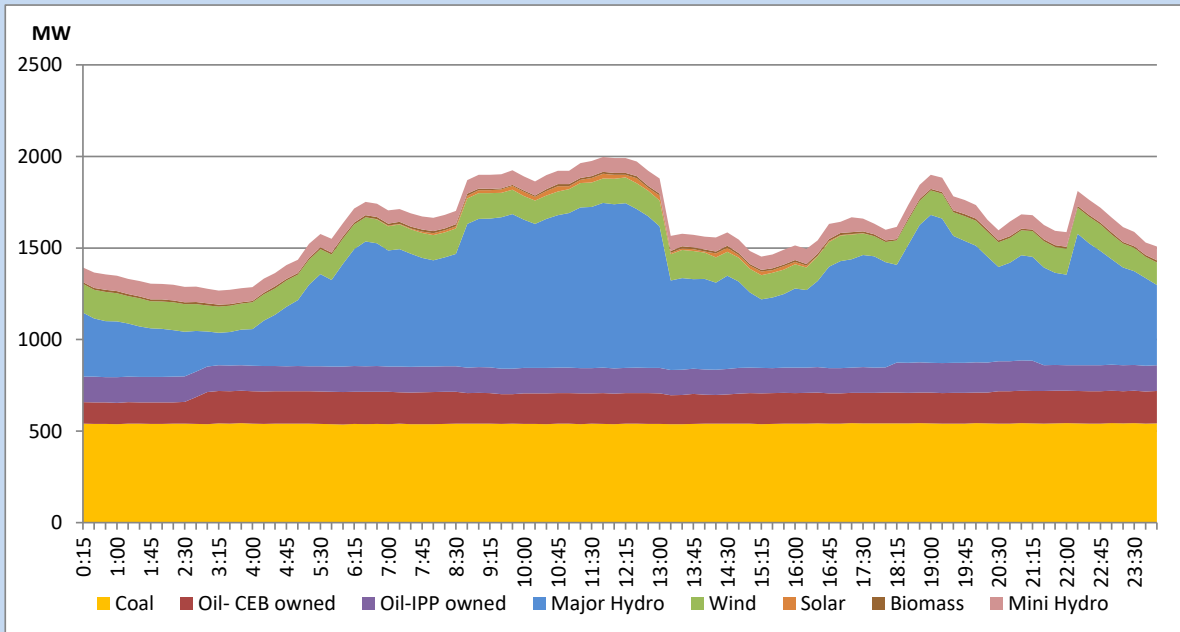


The above figures are excluding contribution from Roof Top Solar, 1MW solar, certain Wind plants and Mini Hydro plants

Daily Load Curve of the Previous day

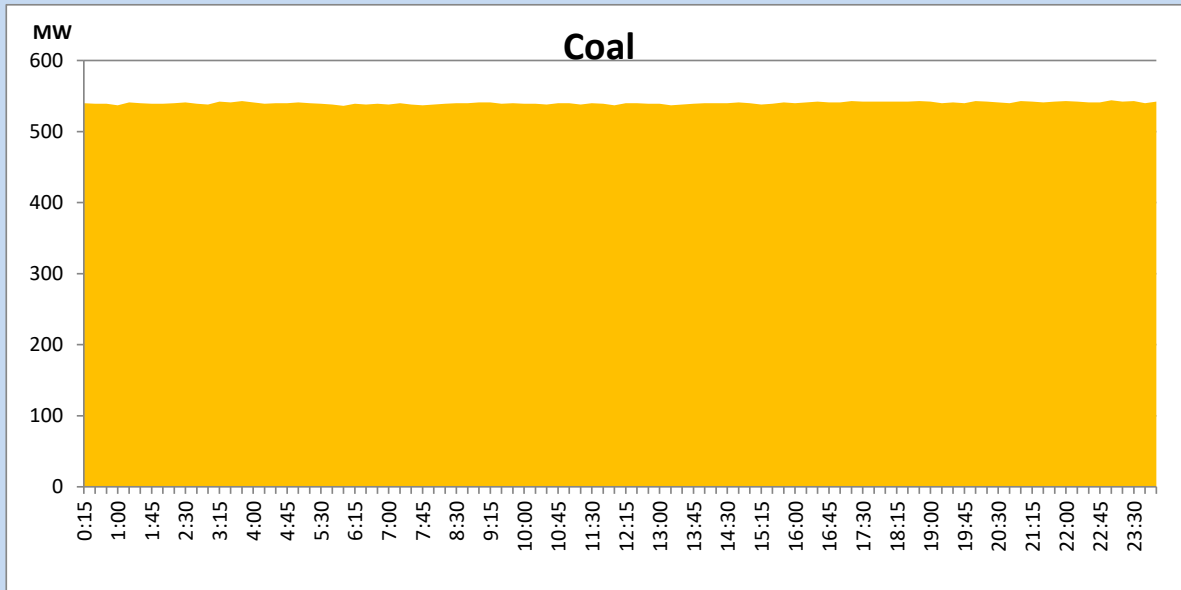
July 15, 2022

Solar and wind data is based on Telemetered Power Stations only



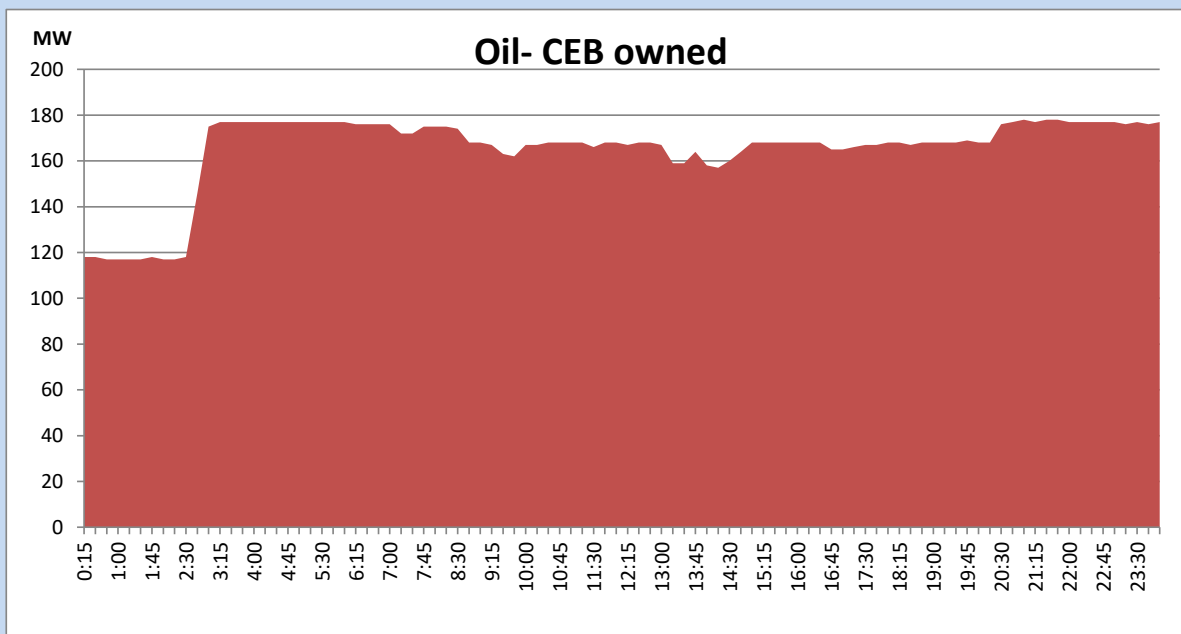
Coal Generation during the Previous day

July 15, 2022



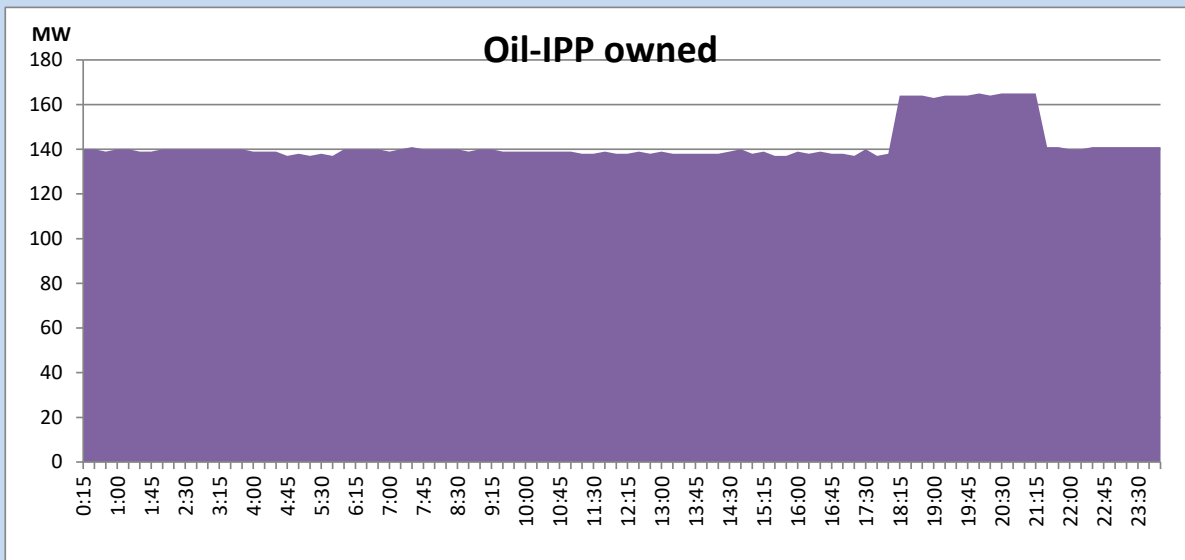
CEB Oil Plant Generation during the Previous day

July 15, 2022



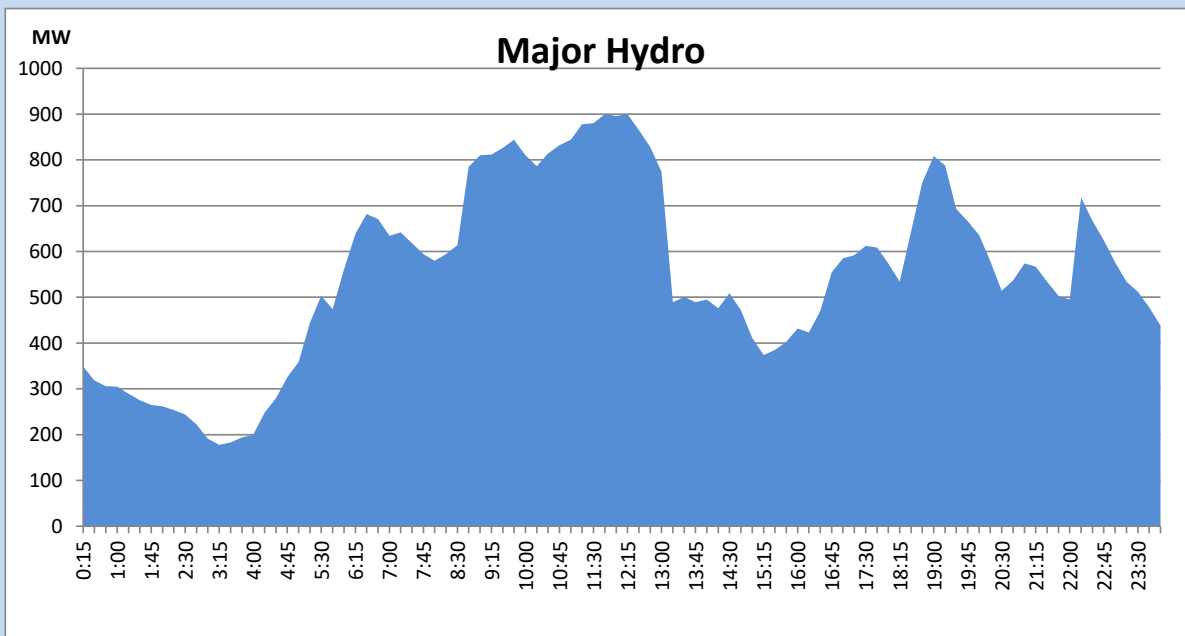
IPP Oil Plant Generation during the Previous day

July 15, 2022



Major Hydro Generation during the Previous day

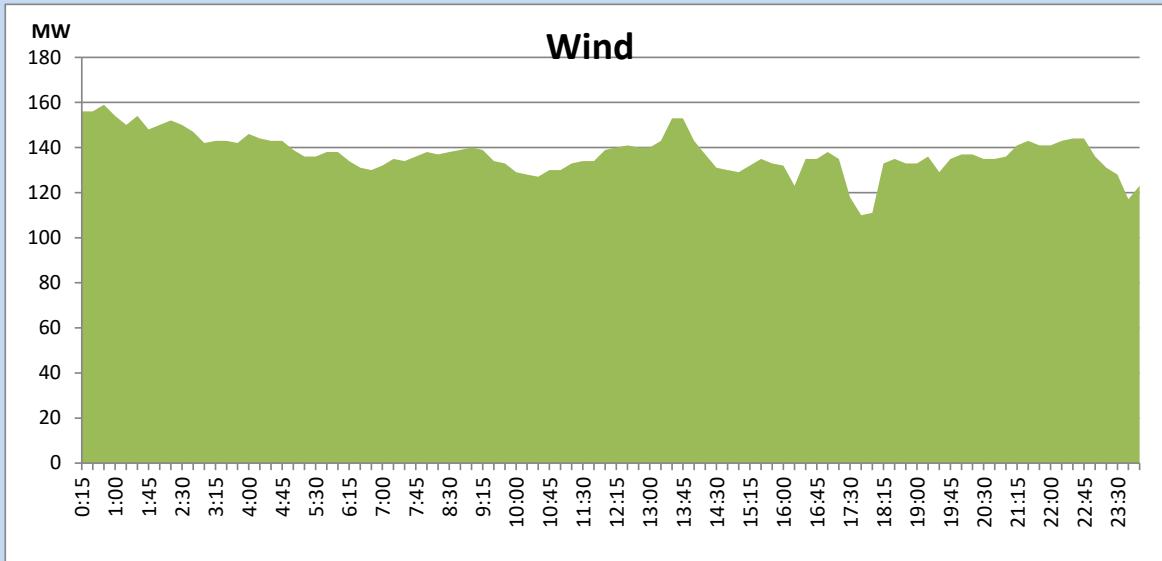
July 15, 2022



Wind Generation during the Previous day

July 15, 2022

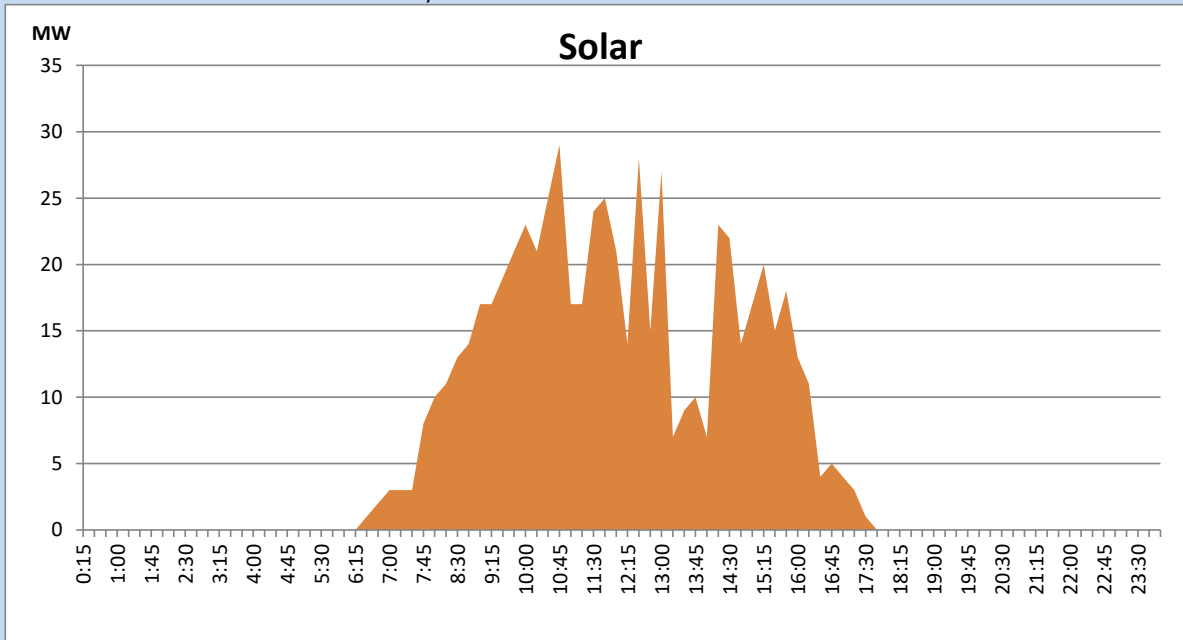
Based on Telemetered Power Stations only



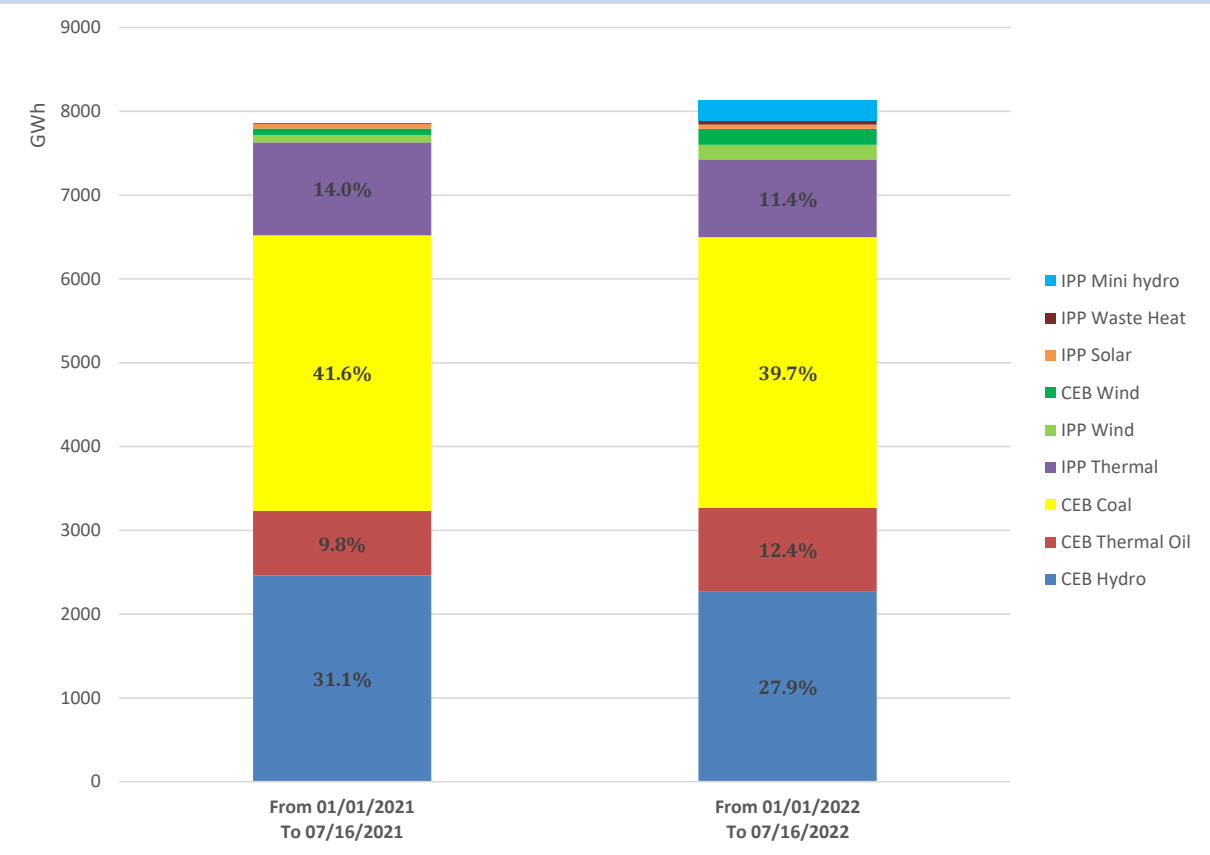
Solar Generation during the Previous day

July 15, 2022

Based on Telemetered Power Stations only



Cumulative Dispatch Comparison with Last Year



Thermal Plant Fuel types

Power Station	Primary Fuel
CEB Thermal	
Sapugaskanda 1	Heavy Fuel
Sapugaskanda 2	Heavy Fuel
Kelanitissa Small Gas Turbines	Auto Diesel
GT 7 - Kelanitissa	Auto Diesel
Kelanitissa CCY	Naphtha or Diesel
Lakvijaya 1	Coal
Lakvijaya 2	Coal
Lakvijaya 3	Coal
Uthuru Janani	Heavy Fuel
Barge CEB	Heavy Fuel

Power Station	Primary Fuel
Private Thermal	
Sojitz - Kelanitissa	Auto Diesel
West Coast	Auto Diesel / Heavy Fuel
ACE Matara	Heavy Fuel
ACE Embilipitiya	Heavy Fuel

Major Incidents during the day -as reported by CEB morning of

July 17, 2022

- 1) Rotational manual load shedding was carried out from 10:20hrs to 12:00hrs and 14:40 hrs to 22:00 hrs.
- 2) Kotmale - U/Kotmale cct 02 energized by 14:02hrs, which was tripped on 14.07.2022