

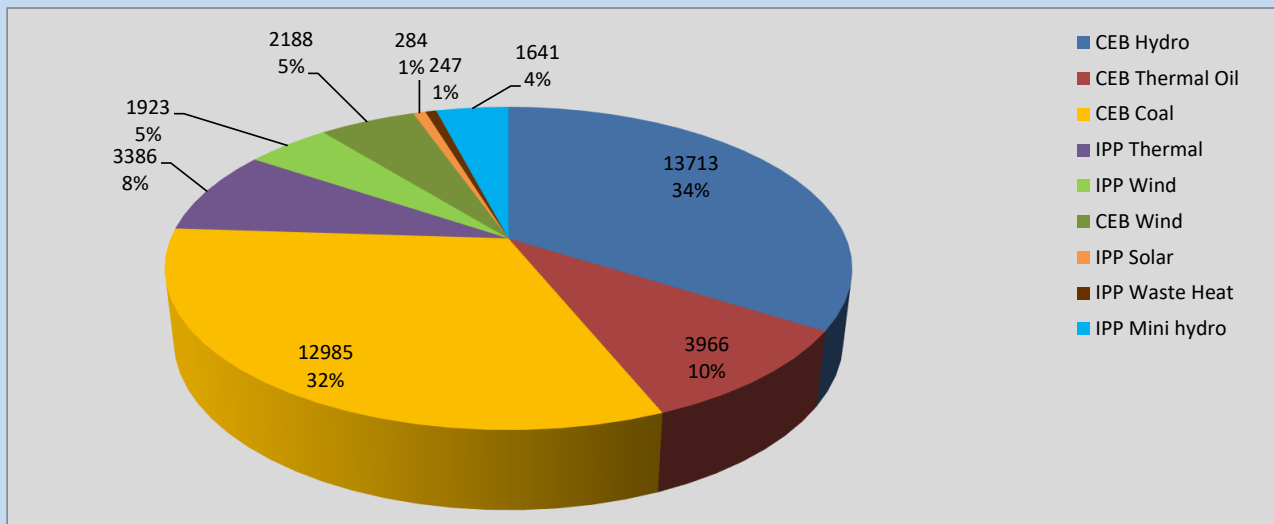
Generation and Reservoirs Statistics

July 15, 2022



PUBLIC UTILITIES COMMISSION OF SRI LANKA

Daily Generation Mix in MWh



Total Generation **40,333 MWh**

Note: Above data is excluding contribution from Roof Top Solar, 1MW Solar and certain Mini Hydro plants

Cumulative Dispatch

Note: Following data is Excluding contribution from Roof Top Solar, 1MW solar and Mini Hydro plants

For Current Month

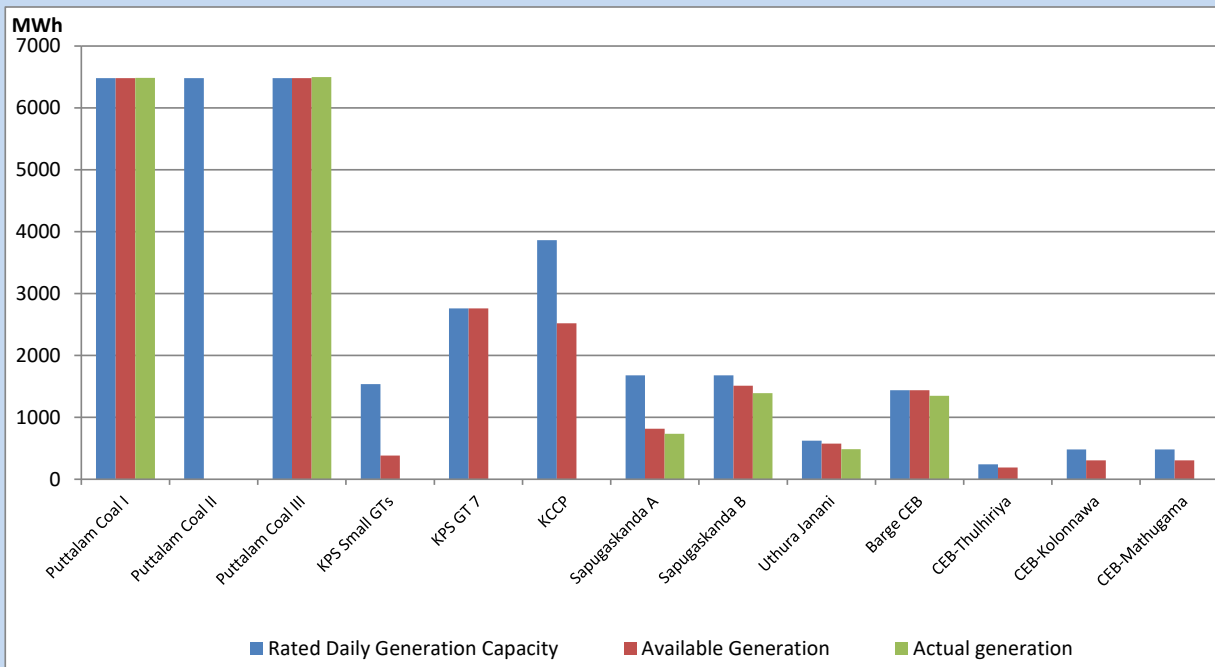
Category	Dispatch (GWh)	Percentage
CEB Hydro	201.66	34.80%
CEB Thermal Oil	59.87	10.33%
CEB Coal	185.42	32.00%
IPP Thermal	54.07	9.33%
SPP Wind	23.60	4.07%
CEB Wind	22.99	3.97%
SPP Solar	4.11	0.71%
SPP Solid Waste	3.82	0.66%
Mini Hydro	23.96	4.13%
Total	579.50	

For Current Year

Category	Dispatch (GWh)	Percentage
CEB Hydro	2,253.0	27.86%
CEB Thermal Oil	1,000.0	12.37%
CEB Coal	3,213.7	39.74%
IPP Thermal	925.6	11.45%
SPP Wind	173.5	2.15%
CEB Wind	188.9	2.34%
SPP Solar	50.6	0.63%
SPP Solid Waste	42.3	0.52%
Mini Hydro	239.6	2.96%
Total	8,086.9	

CEB owned Thermal Plant Dispatch

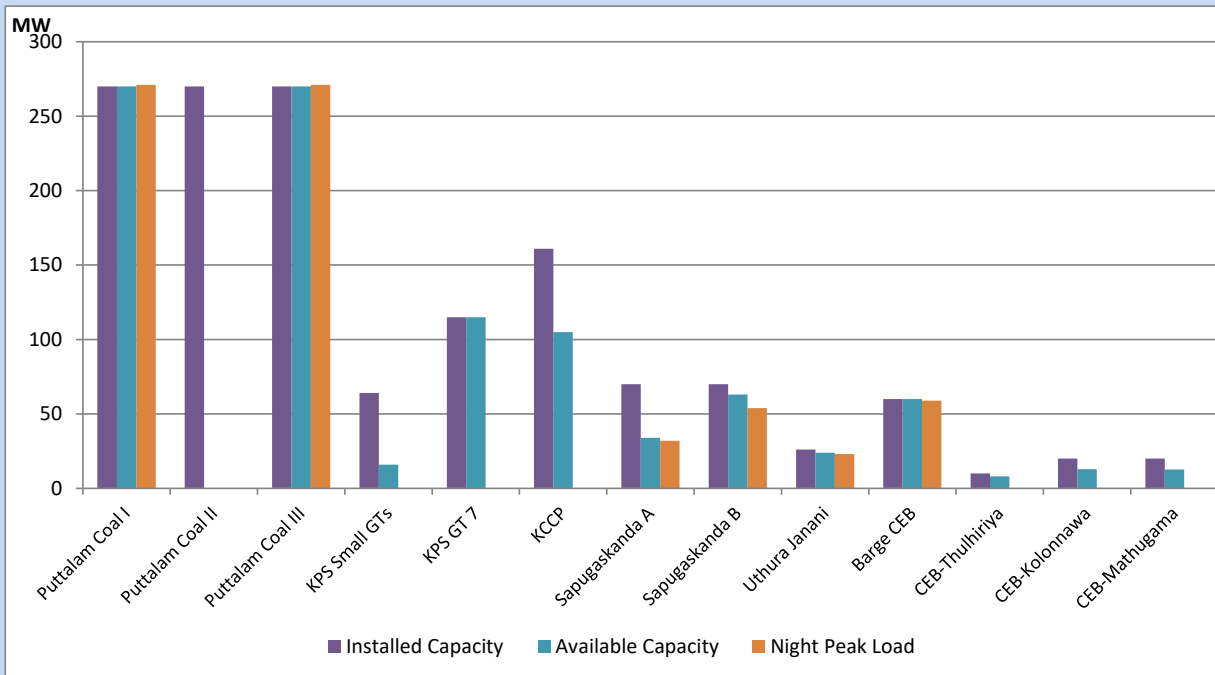
July 15, 2022



Available Generation is estimated based on plant availability at 6.00am on

July 16, 2022

CEB owned Thermal Plant Loading at the Night Peak



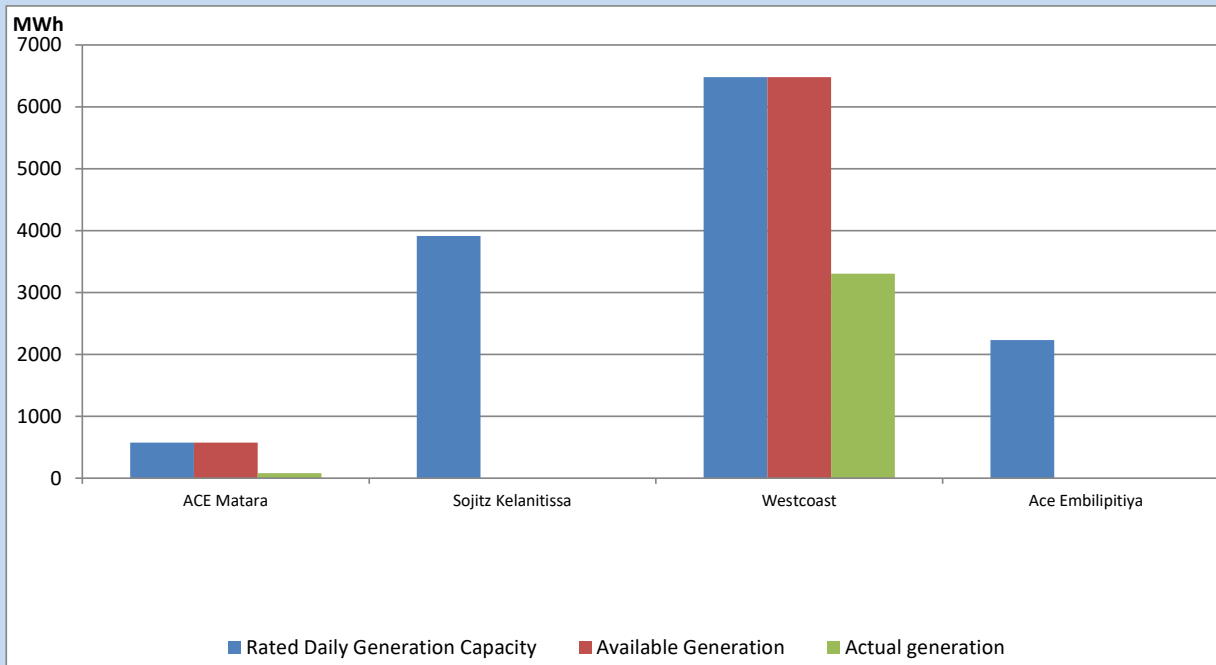
Note- Plant availability is recorded at 6.00 am on

July 16, 2022

IPP owned Thermal Plant Dispatch

July 15, 2022

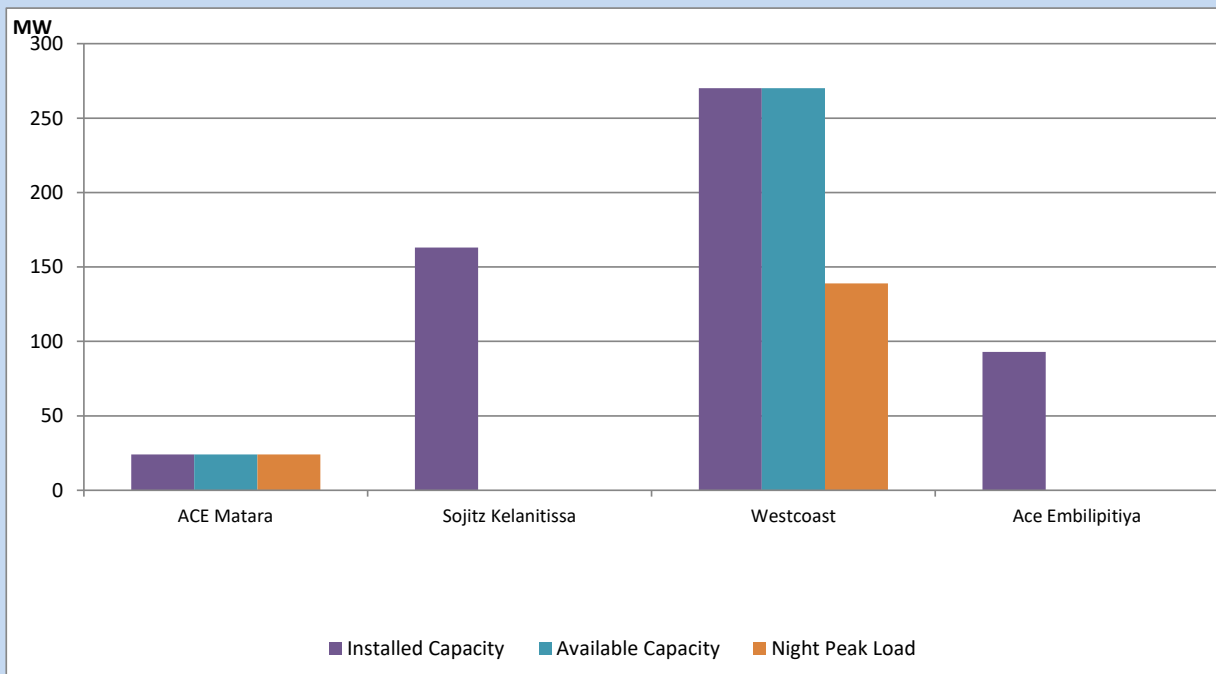
Asia Power, V Power Pallekale, Vpower Galle, V Power Horana, Vpower Hambantota, Vpower Valachchena and Altaqa Mahiyanganaya are not available due to expiration of PPAs



Available Generation is estimated based on plant availability at 6.00am on

July 16, 2022

IPP owned Thermal Plant Loading at the Night Peak

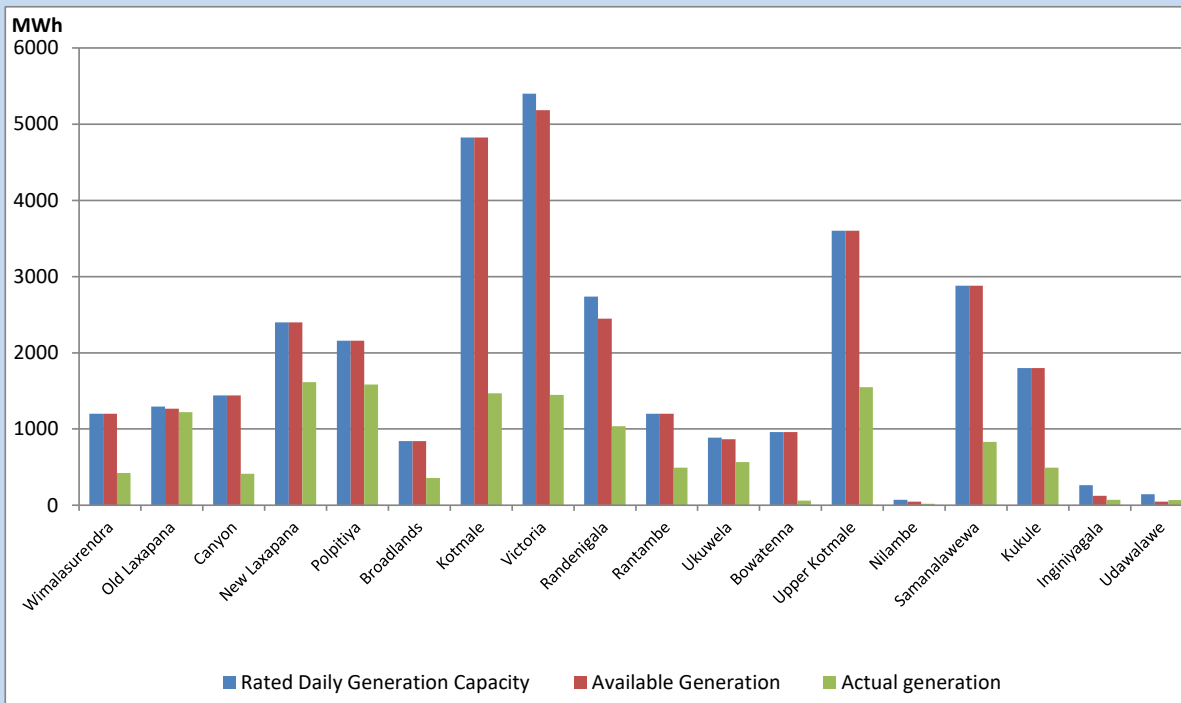


Note- Plant availability is recorded at 6.00 am on

July 16, 2022

Major Hydro Plant Dispatch

July 15, 2022

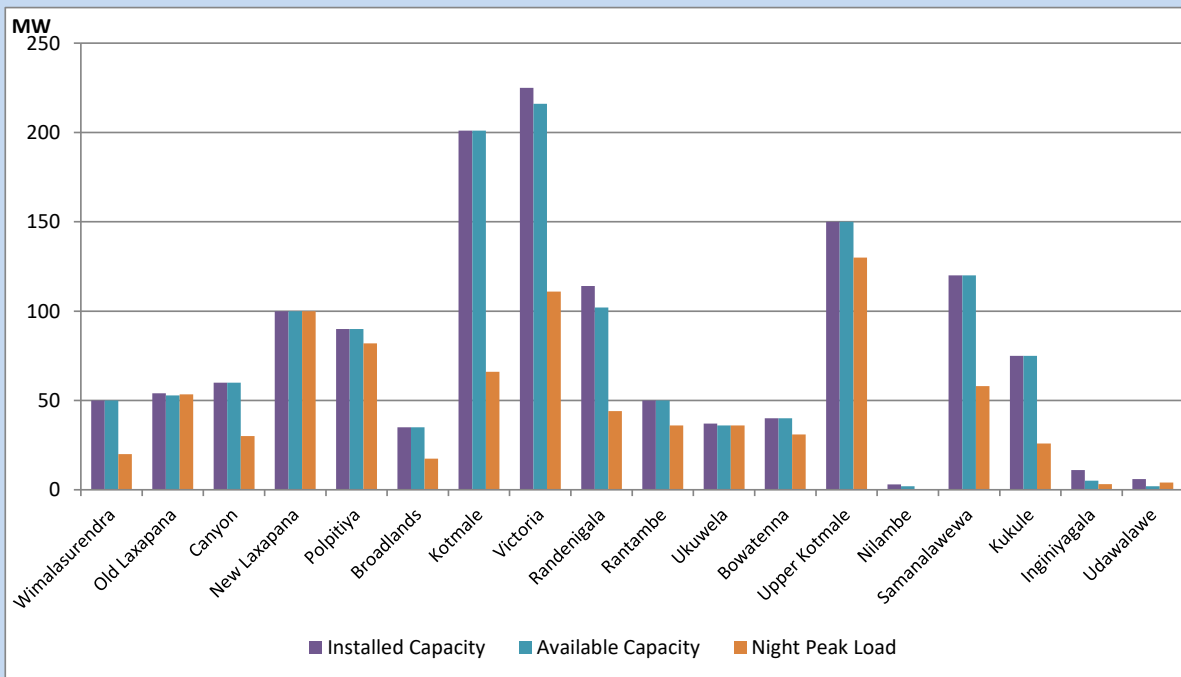


Available Generation is estimated based on plant availability at 6.00am on
Broadlands power plant is operating in the Commissioning Stage

July 16, 2022

Major Hydro Plant Loading at Night Peak

July 15, 2022



Note- Plant availability is recorded at 6.00 am on
Broadlands power plant is operating in the Commissioning Stage

July 16, 2022

Summary of Major Plant performance

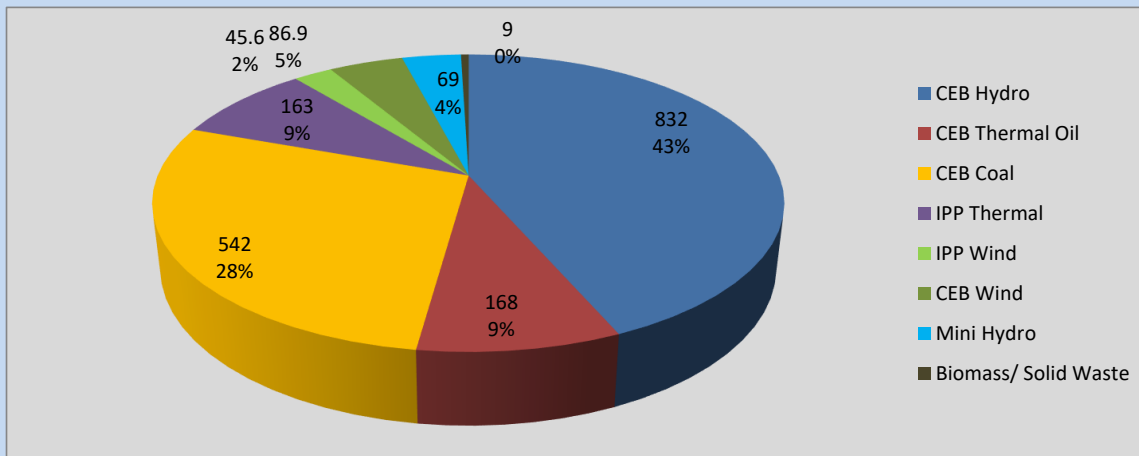
Plant	Installed Capacity	Plant Availability	Night peak Load	Plant Dispatch
	(MW)	(MW)	(MW)	(MWh)
Wimalasurendra	50	50	20	424
Old Laxapana	54	53	53	1,222
Canyon	60	60	30	414
New Laxapana	100	100	100	1,614
Polpitiya	90	90	82	1,582
Broadlands	35	35	18	357
Kotmale	201	201	66	1,470
Victoria	225	216	111	1,446
Randenigala	114	102	44	1,035
Rantambe	50	50	36	492
Ukuwela	37	36	36	565
Bowatenna	40	40	31	60
Upper Kotmale	150	150	130	1,549
Nilambe	3	2	0	20
Samanalawewa	120	120	58	831
Kukule	75	75	26	492
Inginiyagala	11	5	3	72
Udawalawe	6	2	4	68
Puttalam Coal I	270	270	271	6,487
Puttalam Coal II	270	0	0	0
Puttalam Coal III	270	270	271	6,498
KPS Small GTs	64	16	0	0
KPS GT 7	115	115	0	0
KCCP	161	105	0	0
Sapugaskanda A	70	34	32	737
Sapugaskanda B	70	63	54	1,393
Uthura Janani	26	24	23	488
Barge CEB	60	60	59	1,348
CEB-Thulhiriya	10	8	0	0
CEB-Kolonnawa	20	13	0	0
CEB-Mathugama	20	13	0	0
ACE Matara	24	24	24	81
Sojitz Kelanitissa	163	0	0	0
West Coast	270	270	139	3,305
ACE Embilipitiya	93	0	0	0
Total	3,397	2,671	1,932	40,333

Plant availability is the availability recorded at 6 am on

July 16, 2022

Contribution to the Night Peak in MW

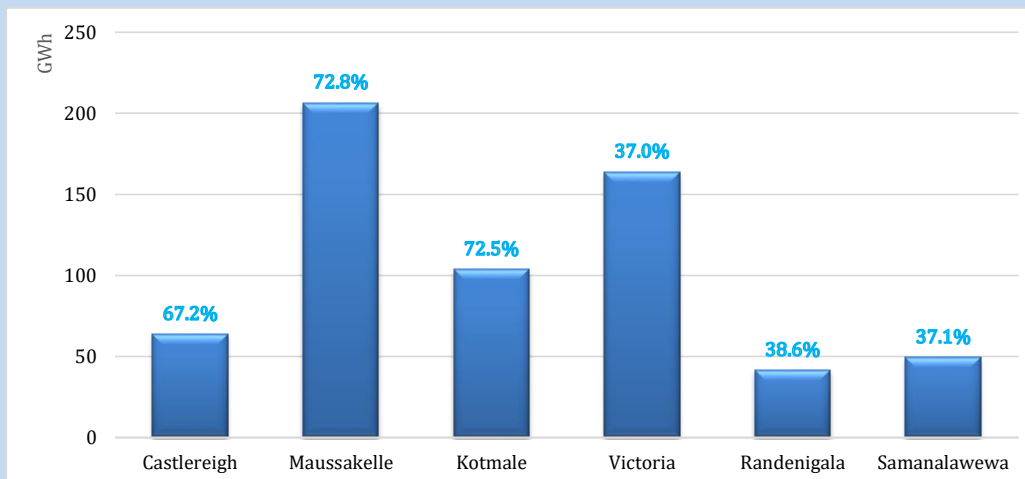
July 15, 2022



Night Peak*	1,915.5 MW
Day Peak	2,013.8 MW
Minimum Demand	1,281.4 MW

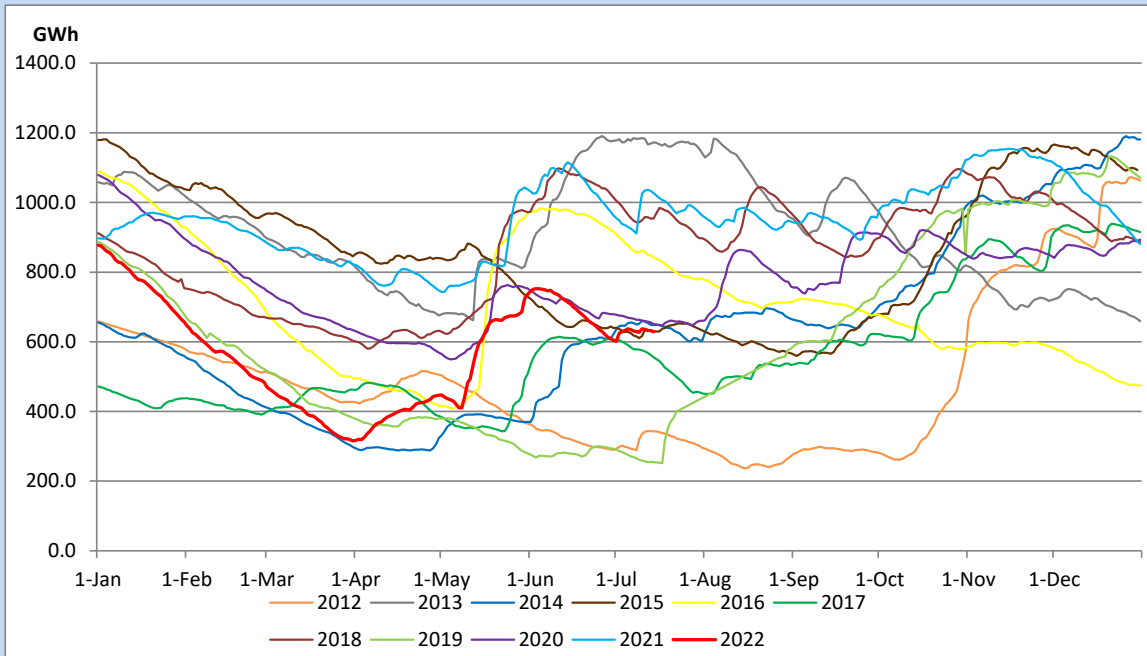
Above figures are excluding contribution from Roof Top Solar, 1MW solar, certain Wind plants and Mini Hydro plants

Reservoir Levels - as at 06.00 Hr on July 16, 2022

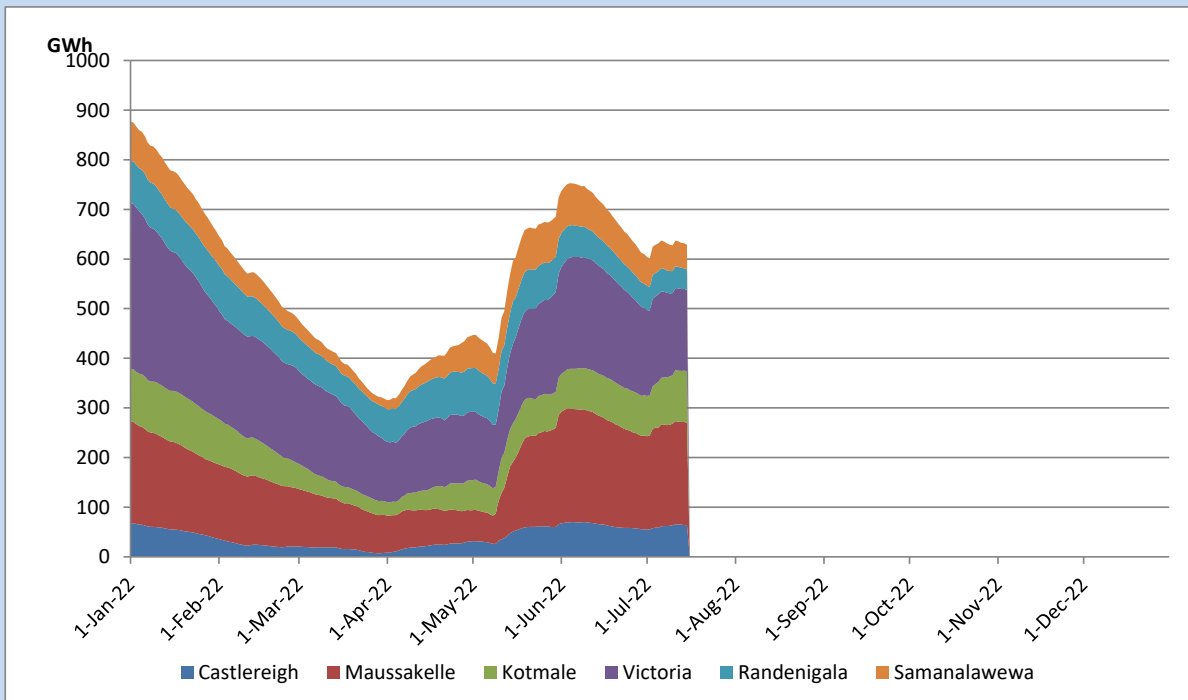


Total Reservoir Level	628.8 GWh
% of Total capacity	52.2%

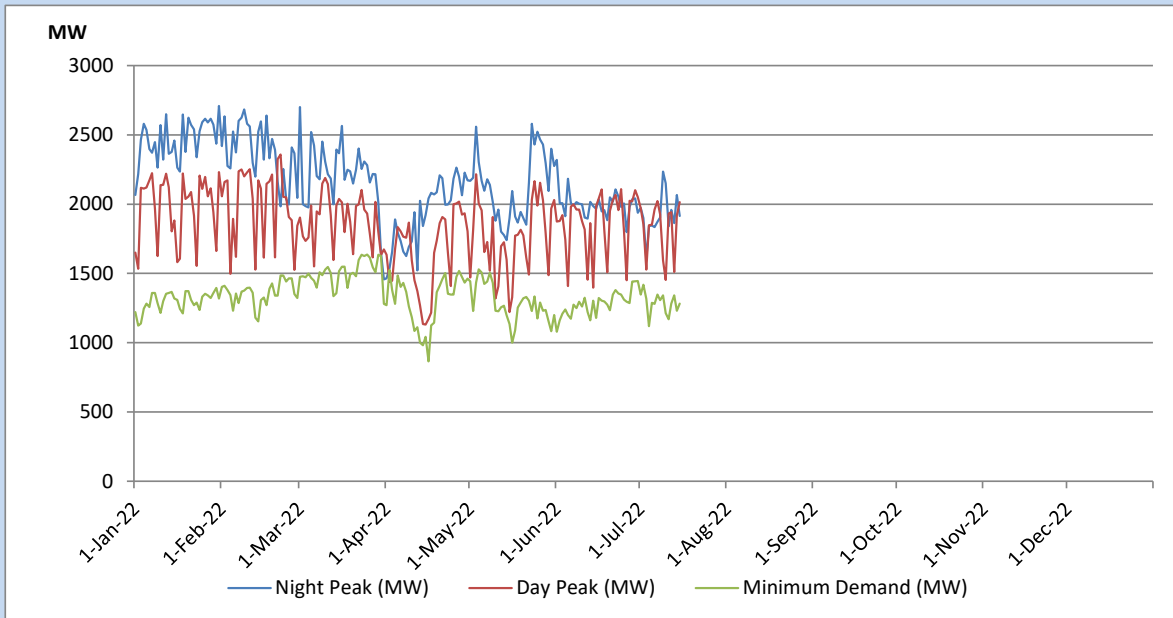
Comparison of Total Reservoir Storage Levels with Past Years



Variation of Major Hydro Reservoir Levels in the current year (GWh)



Variation of Demand during the current year

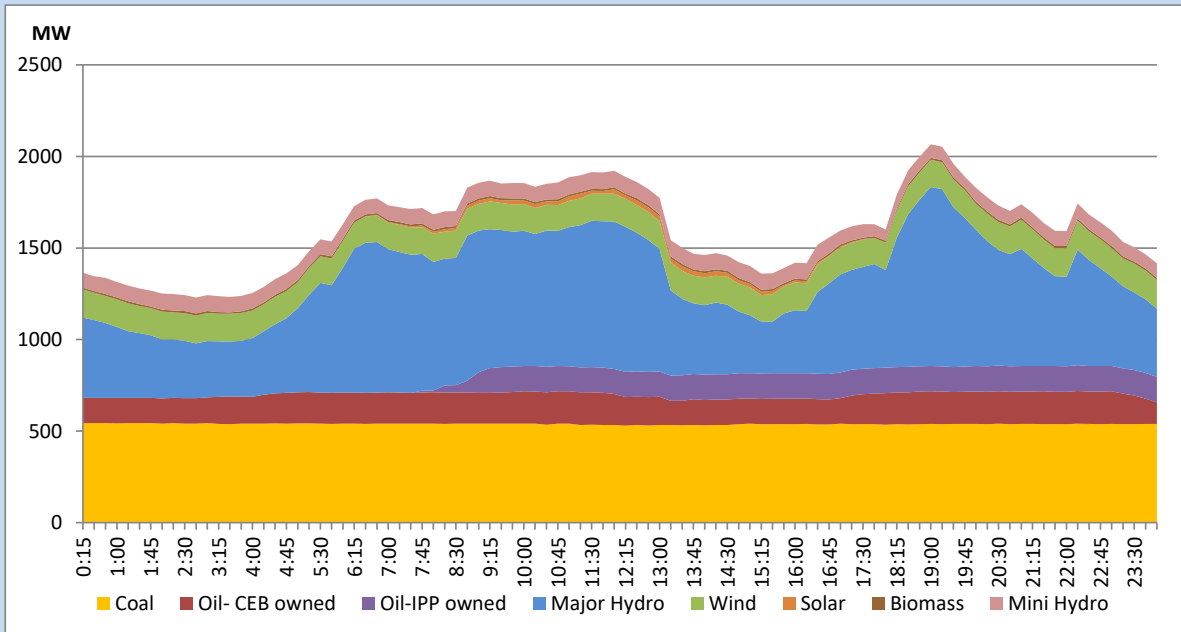


The above figures are excluding contribution from Roof Top Solar, 1MW solar, certain Wind plants and Mini Hydro plants

Daily Load Curve of the Previous day

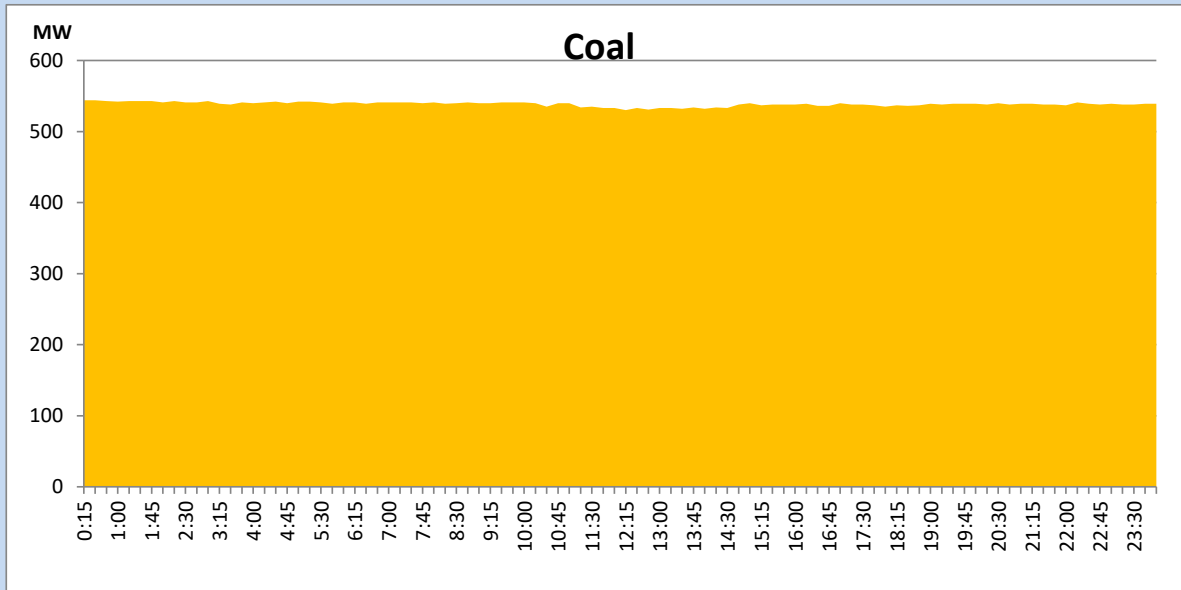
July 14, 2022

Solar and wind data is based on Telemetered Power Stations only



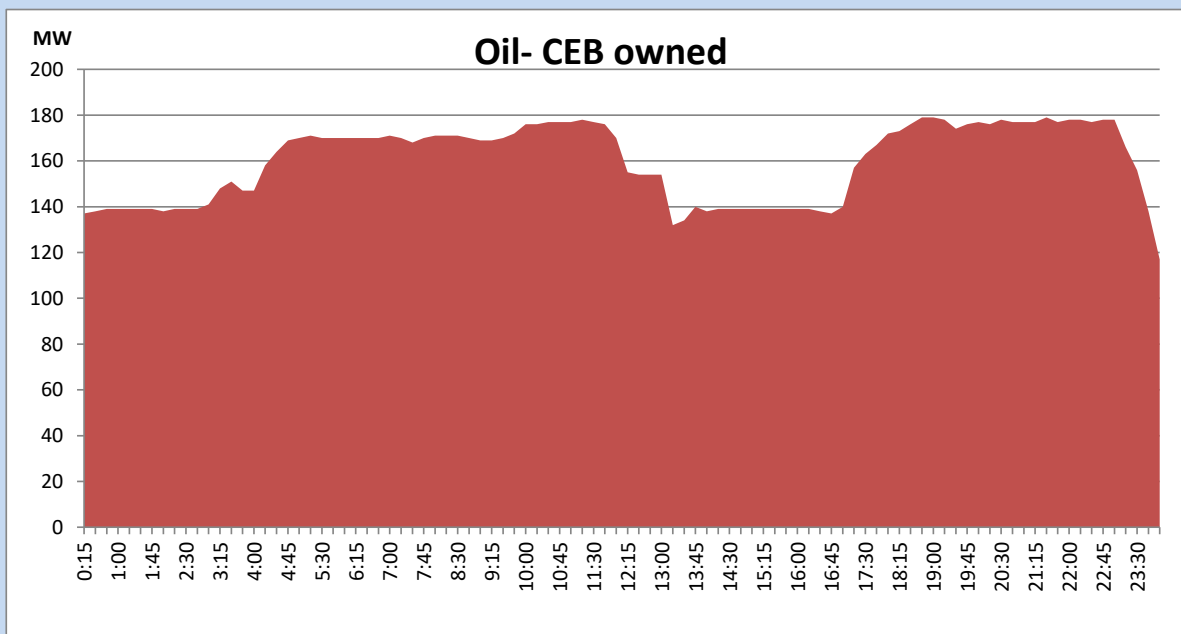
Coal Generation during the Previous day

July 14, 2022



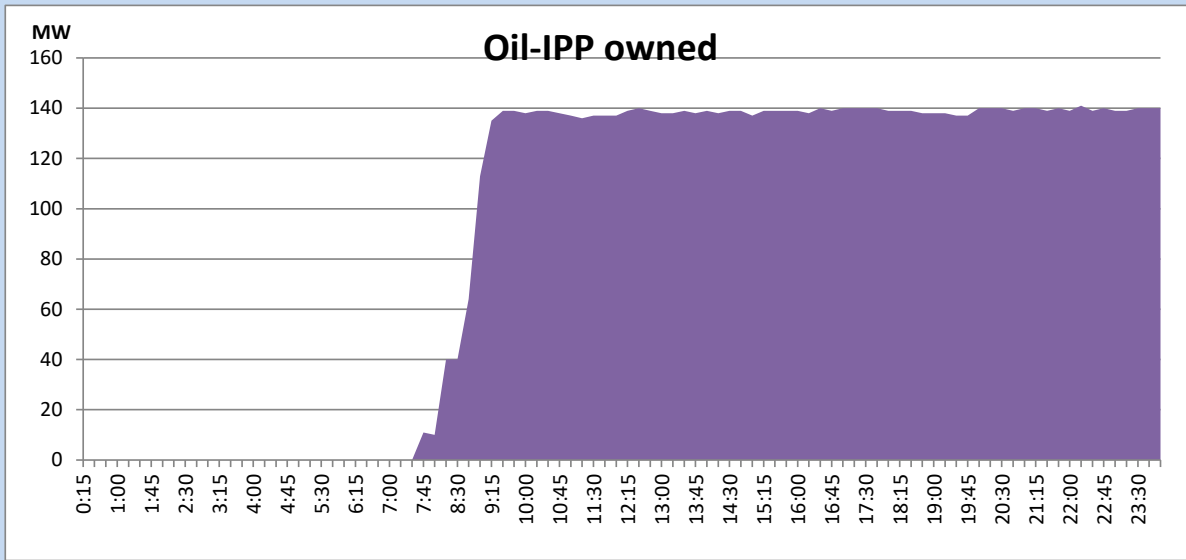
CEB Oil Plant Generation during the Previous day

July 14, 2022



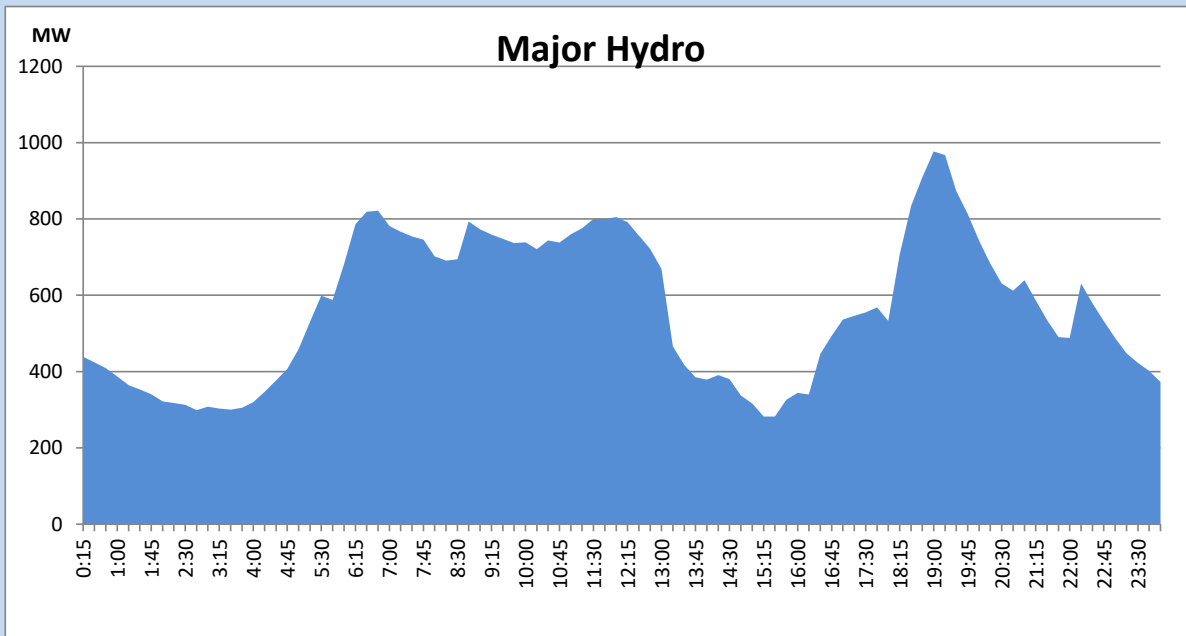
IPP Oil Plant Generation during the Previous day

July 14, 2022



Major Hydro Generation during the Previous day

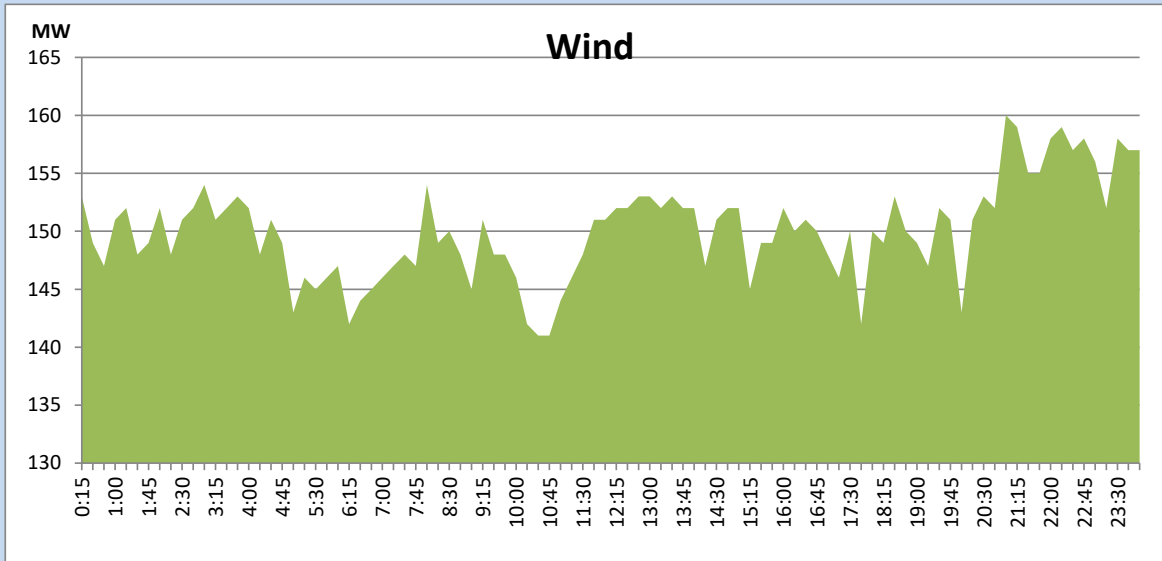
July 14, 2022



Wind Generation during the Previous day

July 14, 2022

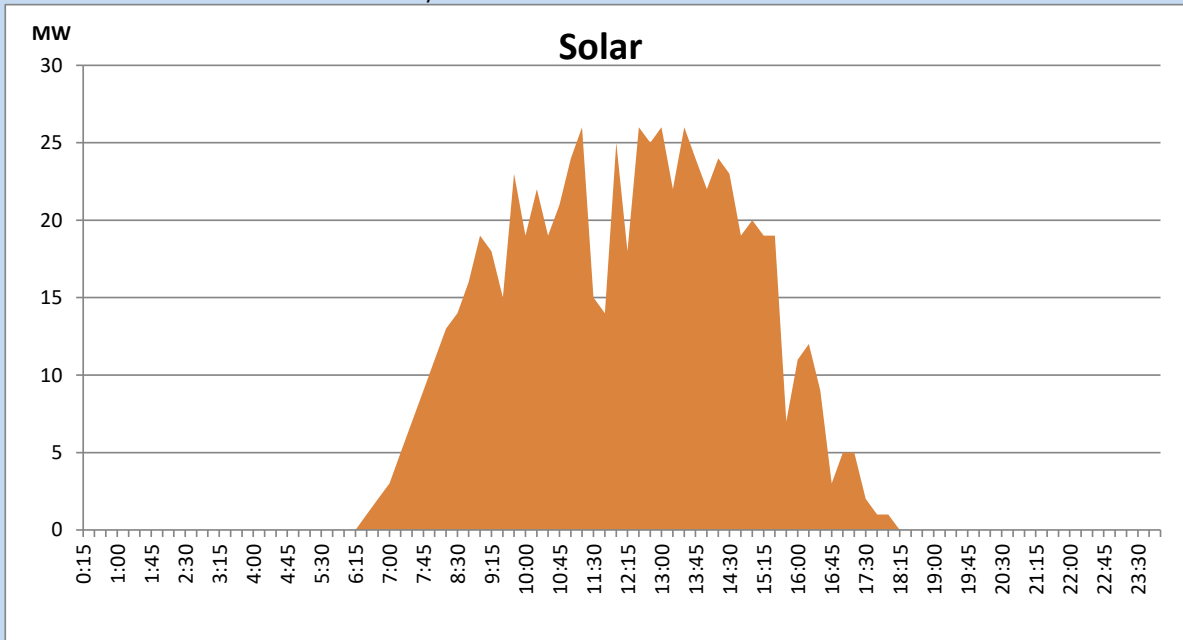
Based on Telemetered Power Stations only



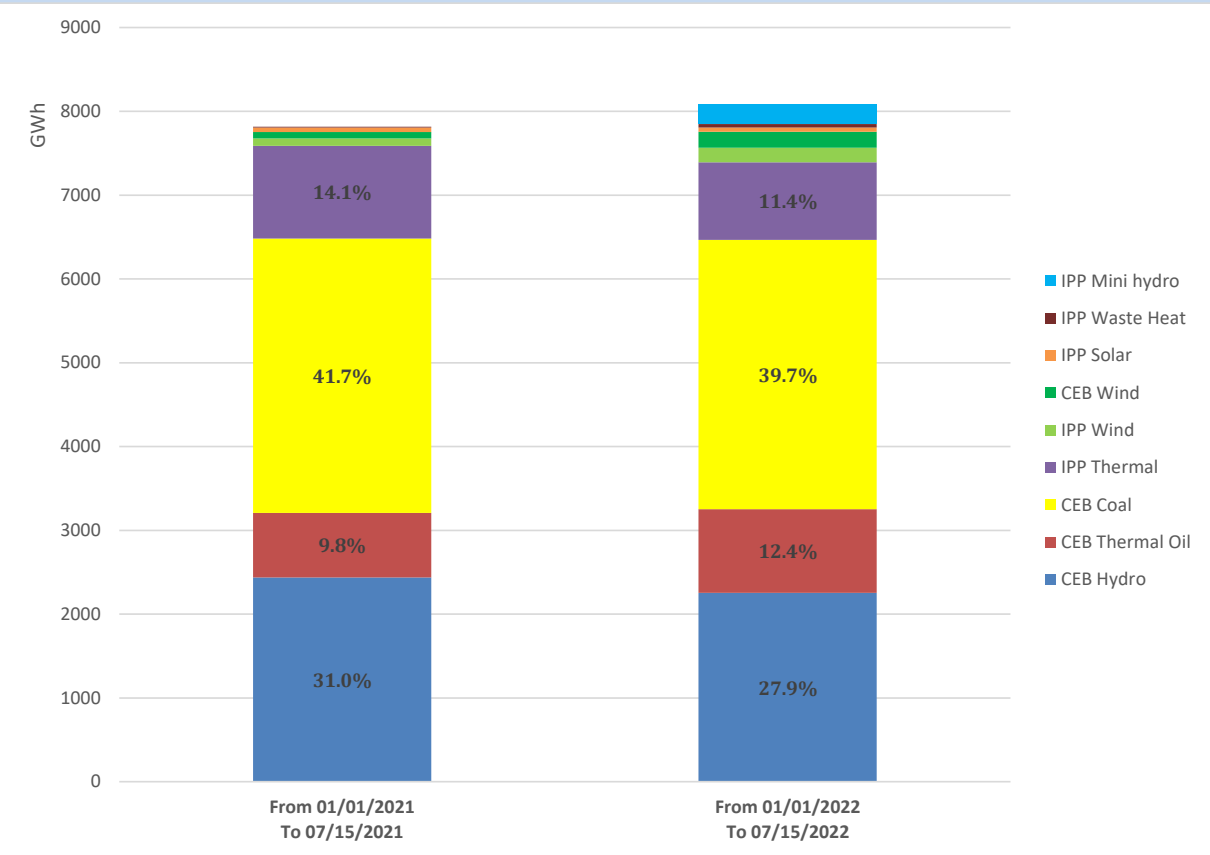
Solar Generation during the Previous day

July 14, 2022

Based on Telemetered Power Stations only



Cumulative Dispatch Comparison with Last Year



Thermal Plant Fuel types

Power Station	Primary Fuel
CEB Thermal	
Sapugaskanda 1	Heavy Fuel
Sapugaskanda 2	Heavy Fuel
Kelanitissa Small Gas Turbines	Auto Diesel
GT 7 - Kelanitissa	Auto Diesel
Kelanitissa CCY	Naphtha or Diesel
Lakvijaya 1	Coal
Lakvijaya 2	Coal
Lakvijaya 3	Coal
Uthuru Janani	Heavy Fuel
Barge CEB	Heavy Fuel

Power Station	Primary Fuel
Private Thermal	
Sojitz - Kelanitissa	Auto Diesel
West Coast	Auto Diesel / Heavy Fuel
ACE Matara	Heavy Fuel
ACE Embilipitiya	Heavy Fuel

Major Incidents during the day -as reported by CEB morning of

July 16, 2022

- 1) Rotational manual load shedding was carried out from 05:30hrs to 08:30hrs and 13:00 hrs to 22:00 hrs.