

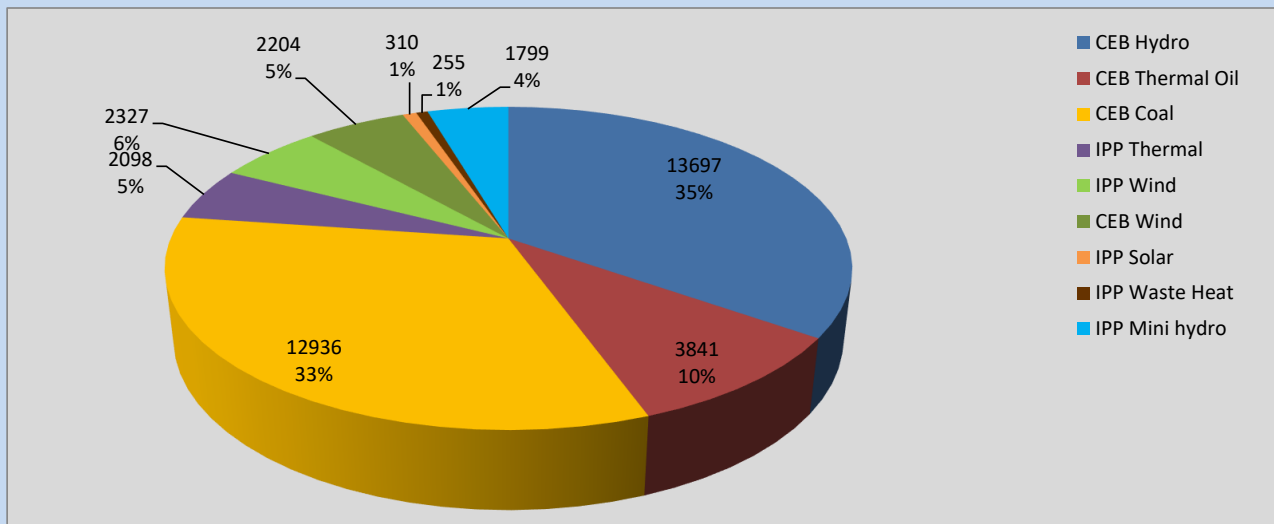
# Generation and Reservoirs Statistics

July 14, 2022



PUBLIC UTILITIES COMMISSION OF SRI LANKA

## Daily Generation Mix in MWh



**Total Generation** **39,467 MWh**

Note: Above data is excluding contribution from Roof Top Solar, 1MW Solar and certain Mini Hydro plants

## Cumulative Dispatch

Note: Following data is Excluding contribution from Roof Top Solar, 1MW solar and Mini Hydro plants

### For Current Month

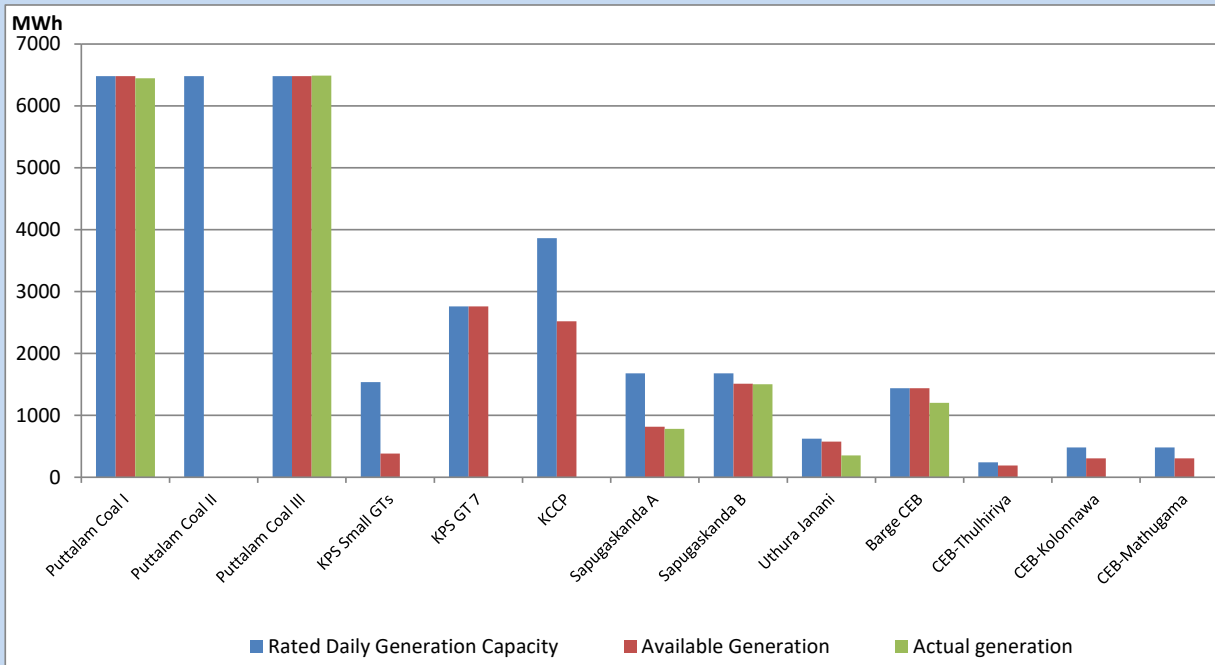
Category	Dispatch (GWh)	Percentage
CEB Hydro	187.95	34.86%
CEB Thermal Oil	55.90	10.37%
CEB Coal	172.43	31.98%
IPP Thermal	50.68	9.40%
SPP Wind	21.68	4.02%
CEB Wind	20.80	3.86%
SPP Solar	3.83	0.71%
SPP Solid Waste	3.57	0.66%
Mini Hydro	22.32	4.14%
<b>Total</b>	<b>539.16</b>	

### For Current Year

Category	Dispatch (GWh)	Percentage
CEB Hydro	2,239.3	27.83%
CEB Thermal Oil	996.0	12.38%
CEB Coal	3,200.7	39.78%
IPP Thermal	922.3	11.46%
SPP Wind	171.6	2.13%
CEB Wind	186.7	2.32%
SPP Solar	50.3	0.62%
SPP Solid Waste	42.1	0.52%
Mini Hydro	237.9	2.96%
<b>Total</b>	<b>8,046.5</b>	

## CEB owned Thermal Plant Dispatch

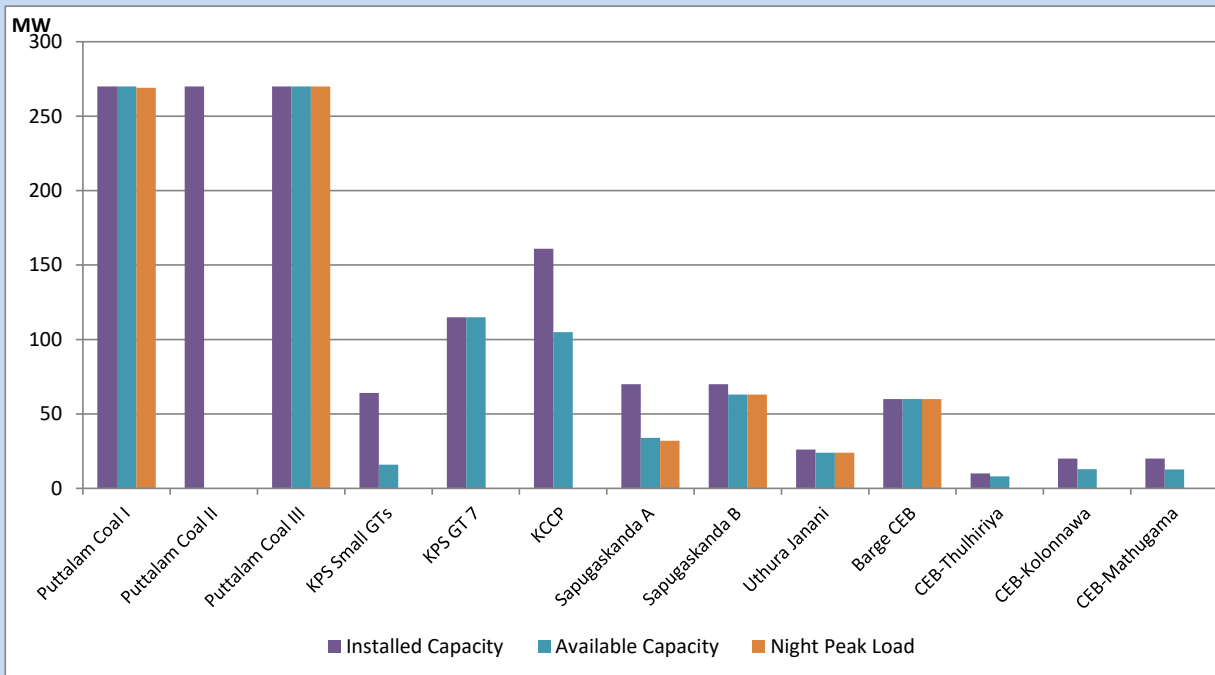
July 14, 2022



Available Generation is estimated based on plant availability at 6.00am on

July 15, 2022

## CEB owned Thermal Plant Loading at the Night Peak



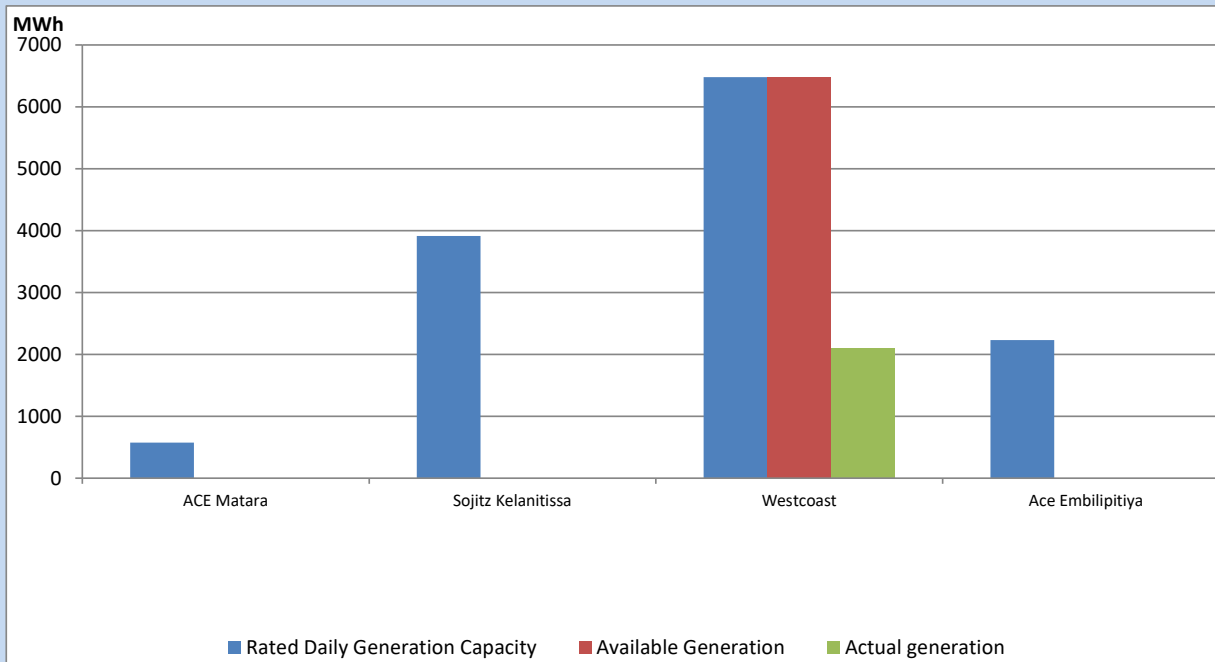
Note- Plant availability is recorded at 6.00 am on

July 15, 2022

## IPP owned Thermal Plant Dispatch

July 14, 2022

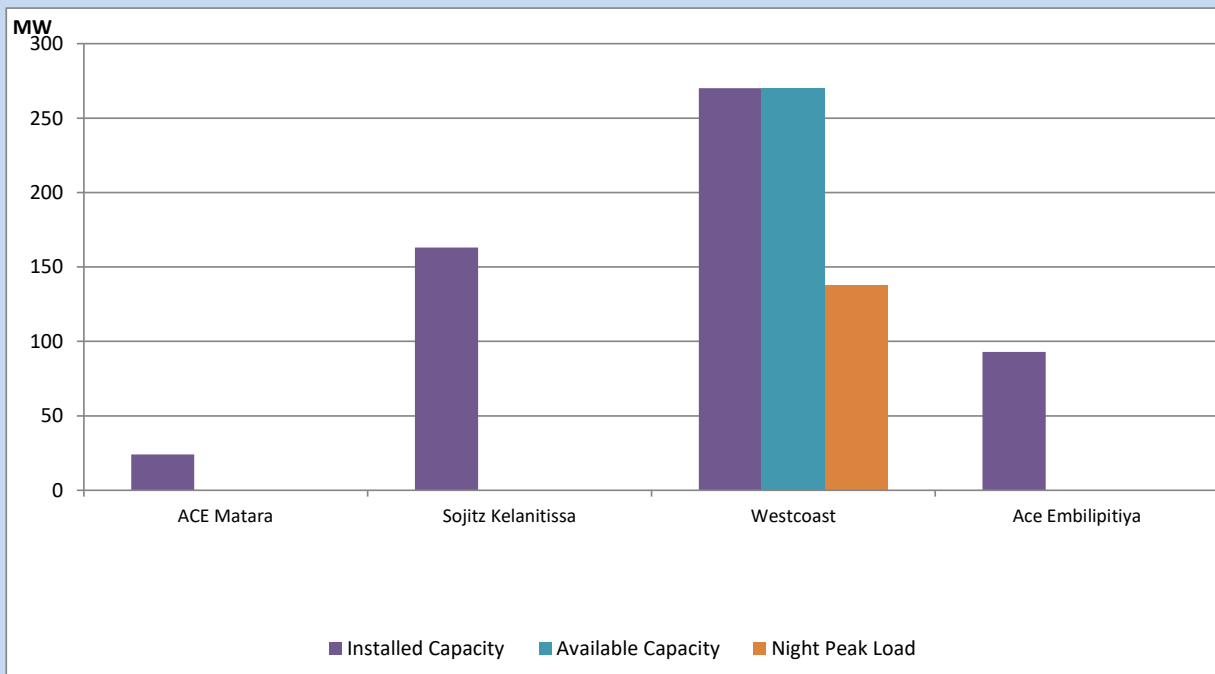
Asia Power, V Power Pallekale, Vpower Galle, V Power Horana, Vpower Hambantota, Vpower Valachchena and Altaqa Mahiyanganaya are not available due to expiration of PPAs



Available Generation is estimated based on plant availability at 6.00am on

July 15, 2022

## IPP owned Thermal Plant Loading at the Night Peak

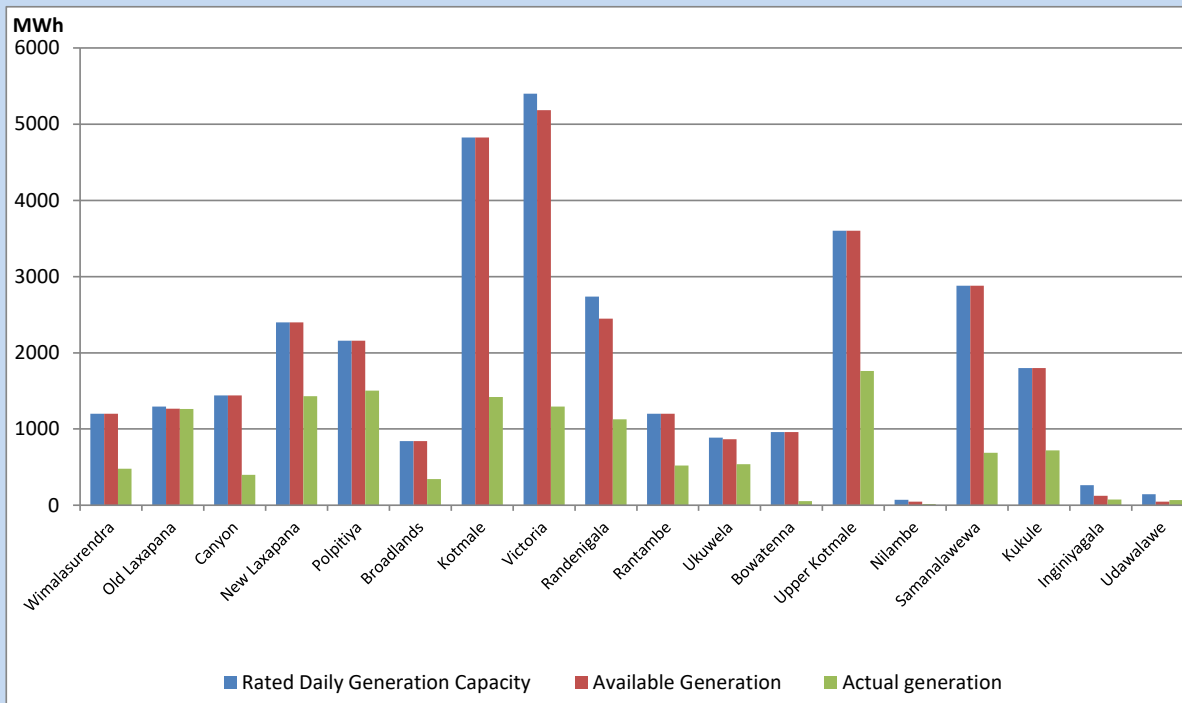


Note- Plant availability is recorded at 6.00 am on

July 15, 2022

## Major Hydro Plant Dispatch

July 14, 2022

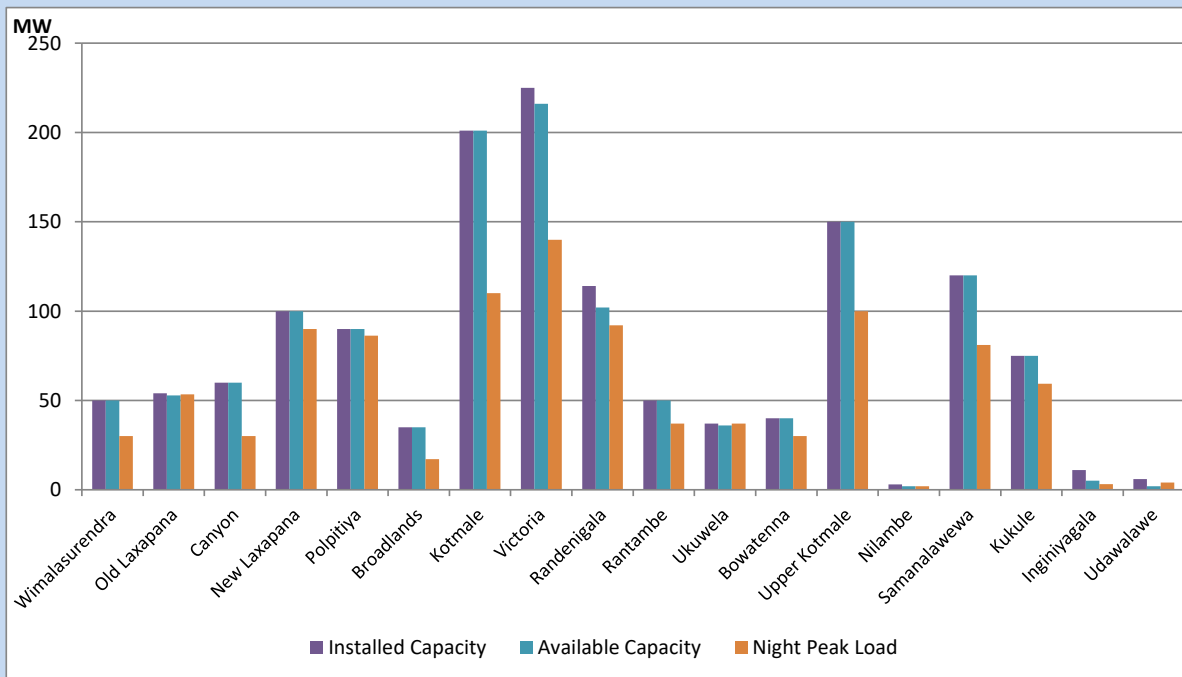


Available Generation is estimated based on plant availability at 6.00am on July 15, 2022  
 Broadlands power plant is operating in the Commissioning Stage

July 15, 2022

## Major Hydro Plant Loading at Night Peak

July 14, 2022



Note- Plant availability is recorded at 6.00 am on July 15, 2022  
 Broadlands power plant is operating in the Commissioning Stage

## Summary of Major Plant performance

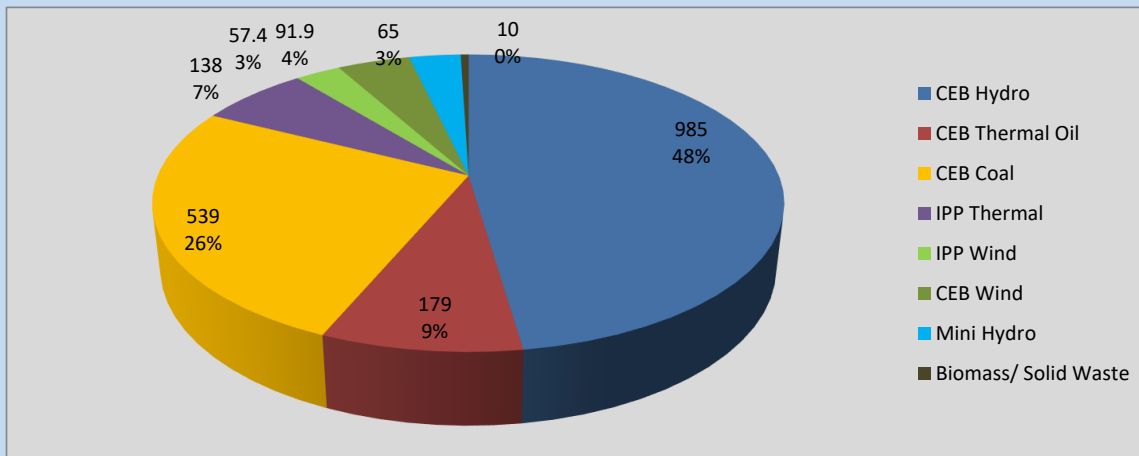
Plant	Installed Capacity	Plant Availability	Night peak Load	Plant Dispatch
	(MW)	(MW)	(MW)	(MWh)
Wimalasurendra	50	50	30	480
Old Laxapana	54	53	53	1,264
Canyon	60	60	30	397
New Laxapana	100	100	90	1,430
Polpitiya	90	90	86	1,505
Broadlands	35	35	17	344
Kotmale	201	201	110	1,420
Victoria	225	216	140	1,294
Randenigala	114	102	92	1,126
Rantambe	50	50	37	521
Ukuwela	37	36	37	538
Bowatenna	40	40	30	53
Upper Kotmale	150	150	100	1,761
Nilambe	3	2	2	14
Samanalawewa	120	120	81	688
Kukule	75	75	59	719
Inginiyagala	11	5	3	75
Udawalawe	6	2	4	68
Puttalam Coal I	270	270	269	6,447
Puttalam Coal II	270	0	0	0
Puttalam Coal III	270	270	270	6,489
KPS Small GTs	64	16	0	0
KPS GT 7	115	115	0	0
KCCP	161	105	0	0
Sapugaskanda A	70	34	32	781
Sapugaskanda B	70	63	63	1,503
Uthura Janani	26	24	24	355
Barge CEB	60	60	60	1,202
CEB-Thulhiriya	10	8	0	0
CEB-Kolonnawa	20	13	0	0
CEB-Mathugama	20	13	0	0
ACE Matara	24	0	0	0
Sojitz Kelanitissa	163	0	0	0
West Coast	270	270	138	2,098
ACE Embilipitiya	93	0	0	0
<b>Total</b>	<b>3,397</b>	<b>2,647</b>	<b>2,083</b>	<b>39,467</b>

Plant availability is the availability recorded at 6 am on

July 15, 2022

## Contribution to the Night Peak in MW

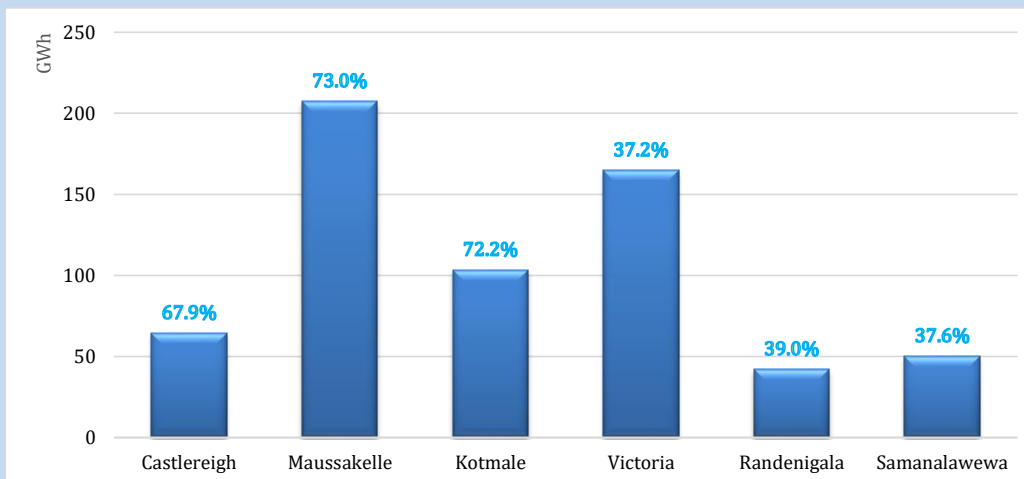
July 14, 2022



Night Peak*	2,065.7 MW
Day Peak	1,921.3 MW
Minimum Demand	1,229.7 MW

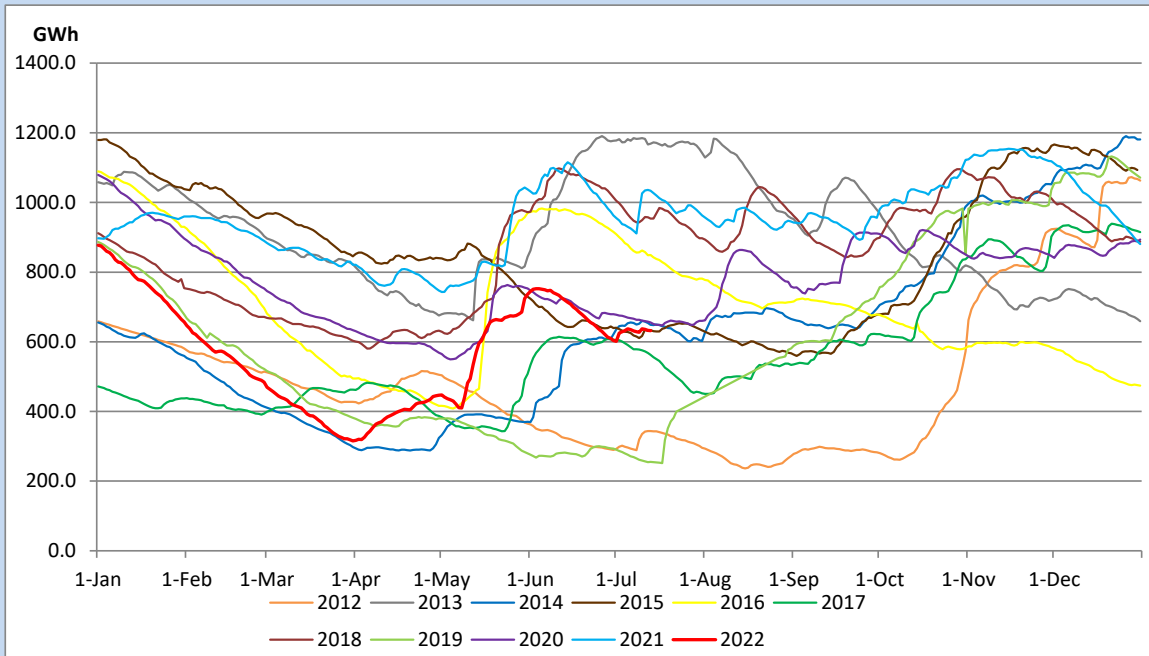
Above figures are excluding contribution from Roof Top Solar, 1MW solar, certain Wind plants and Mini Hydro plants

## Reservoir Levels - as at 06.00 Hr on July 15, 2022

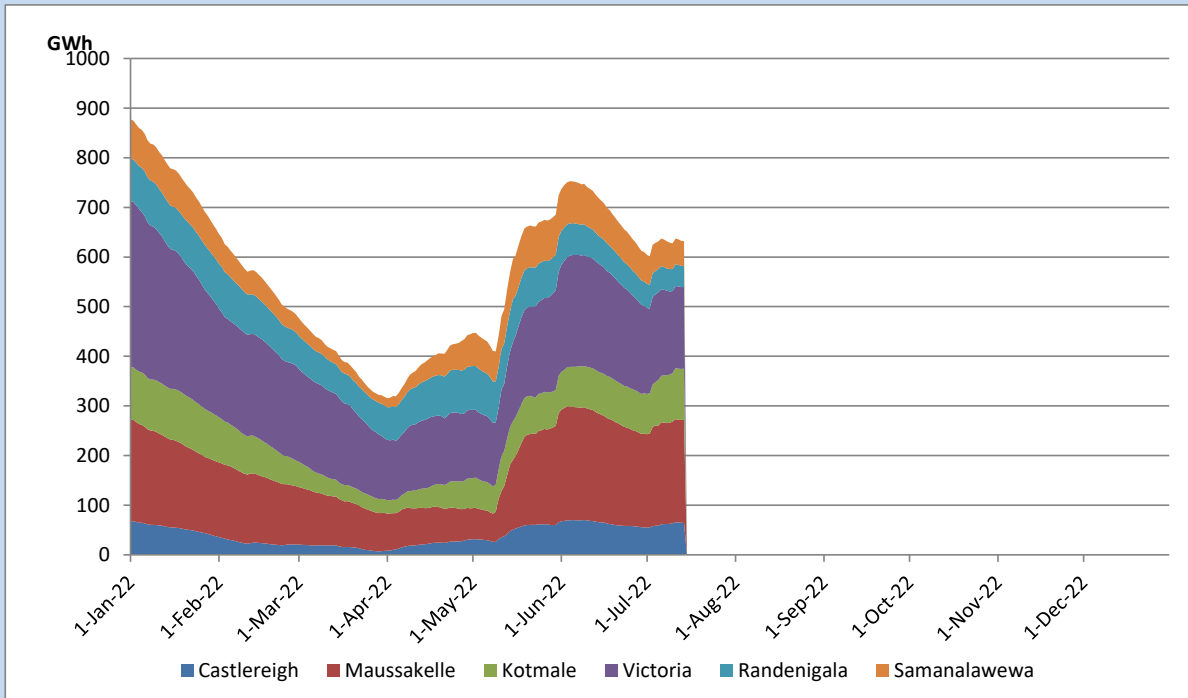


Total Reservoir Level	631.7 GWh
% of Total capacity	52.4%

## Comparison of Total Reservoir Storage Levels with Past Years

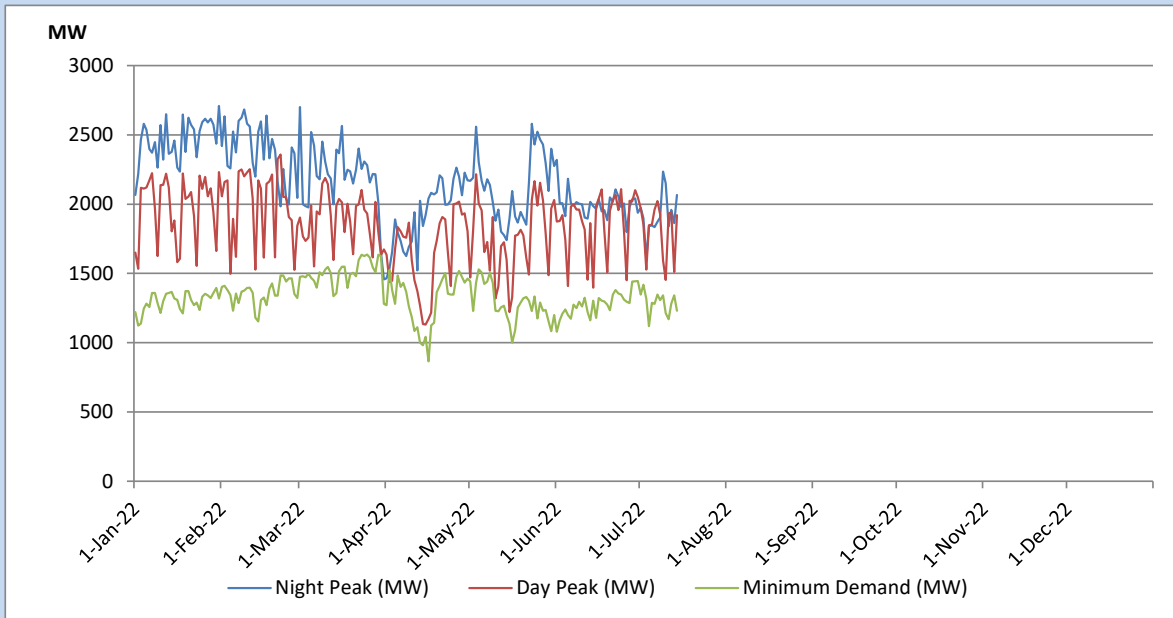


## Variation of Major Hydro Reservoir Levels in the current year (GWh)





## Variation of Demand during the current year

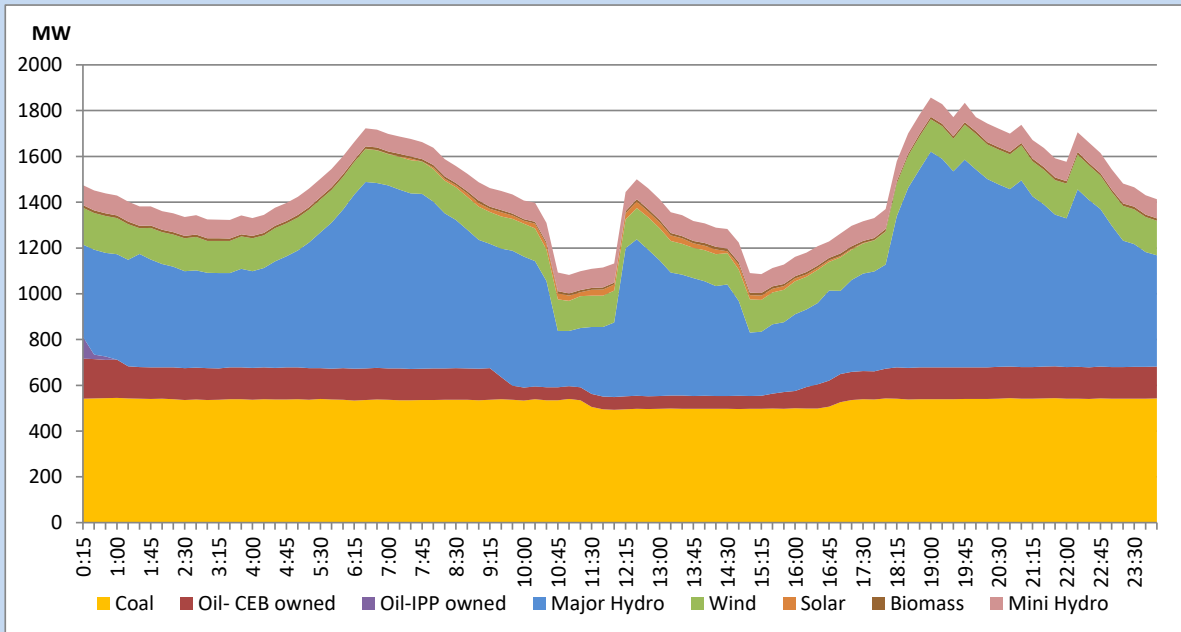


The above figures are excluding contribution from Roof Top Solar, 1MW solar, certain Wind plants and Mini Hydro plants

## Daily Load Curve of the Previous day

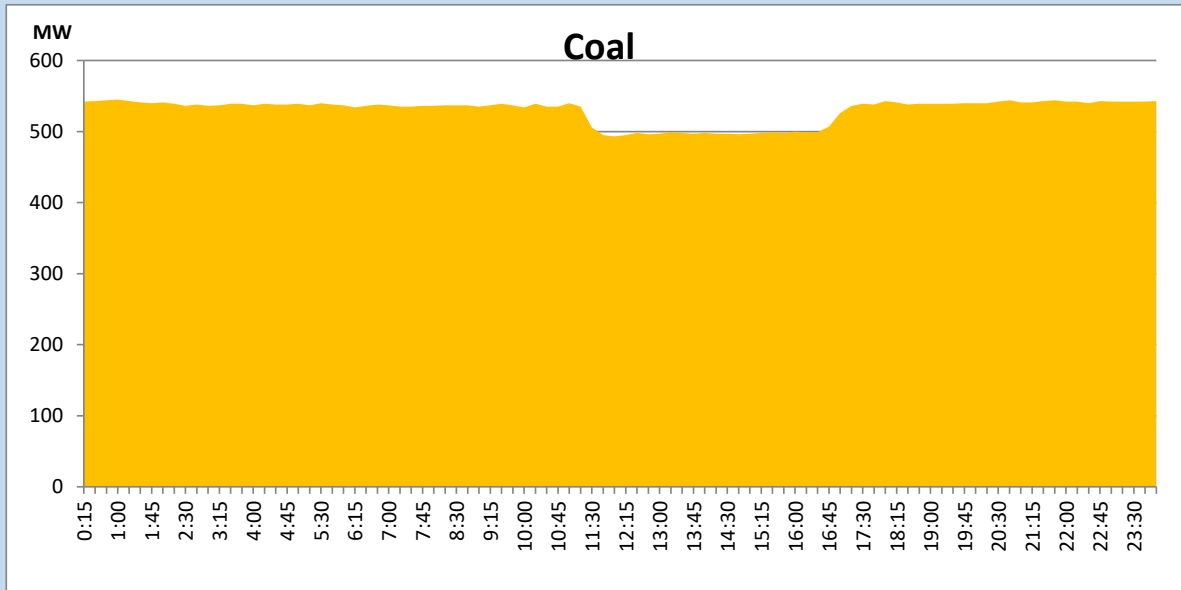
July 13, 2022

Solar and wind data is based on Telemetered Power Stations only



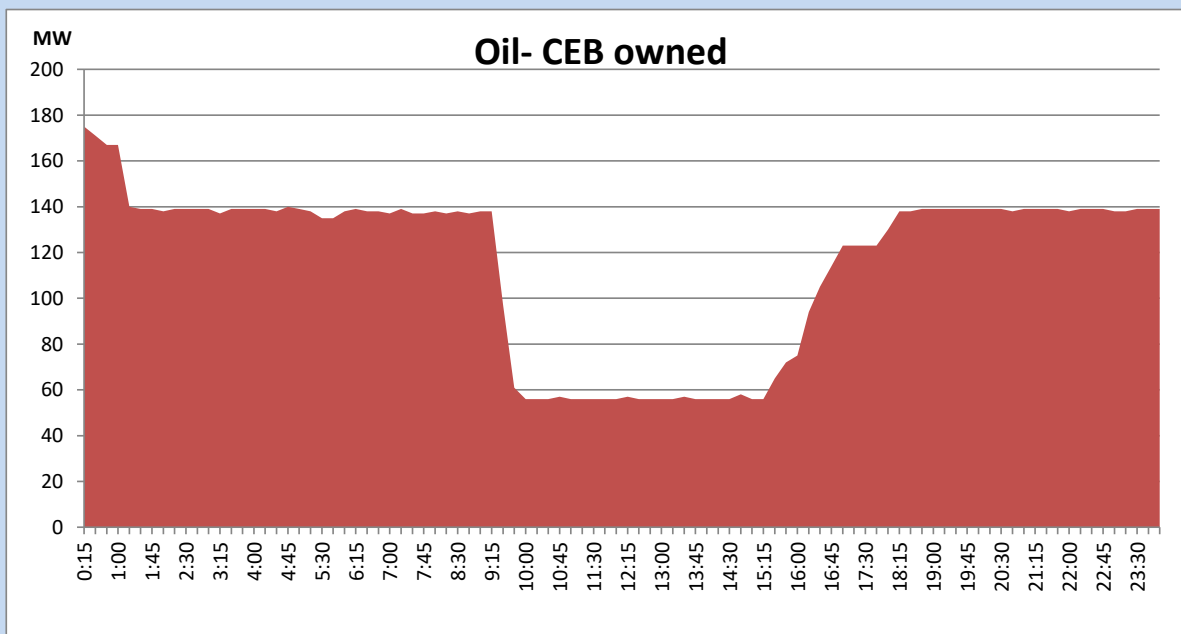
## Coal Generation during the Previous day

July 13, 2022



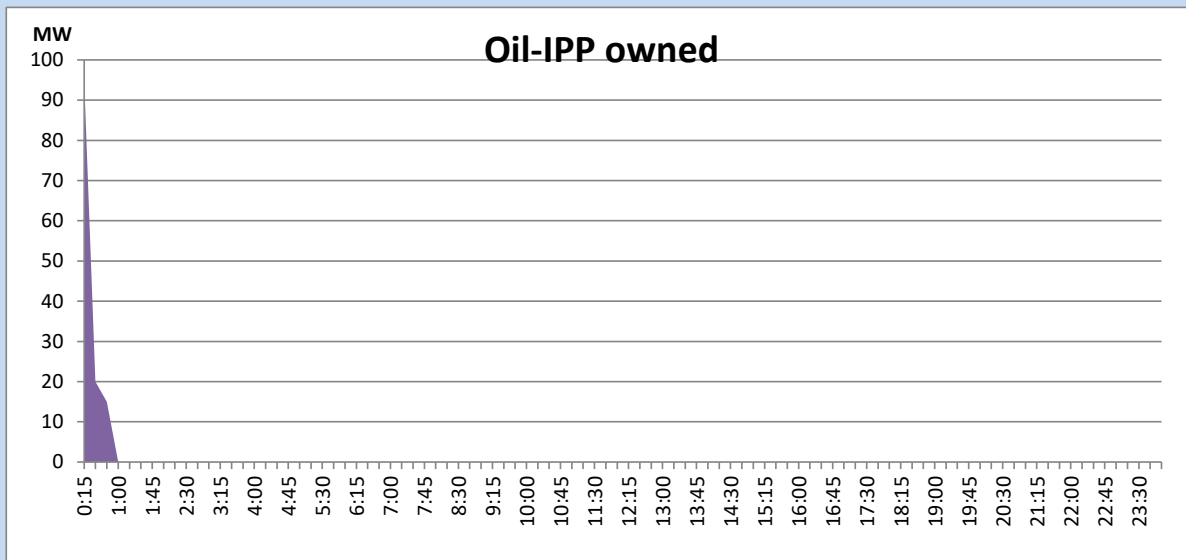
## CEB Oil Plant Generation during the Previous day

July 13, 2022



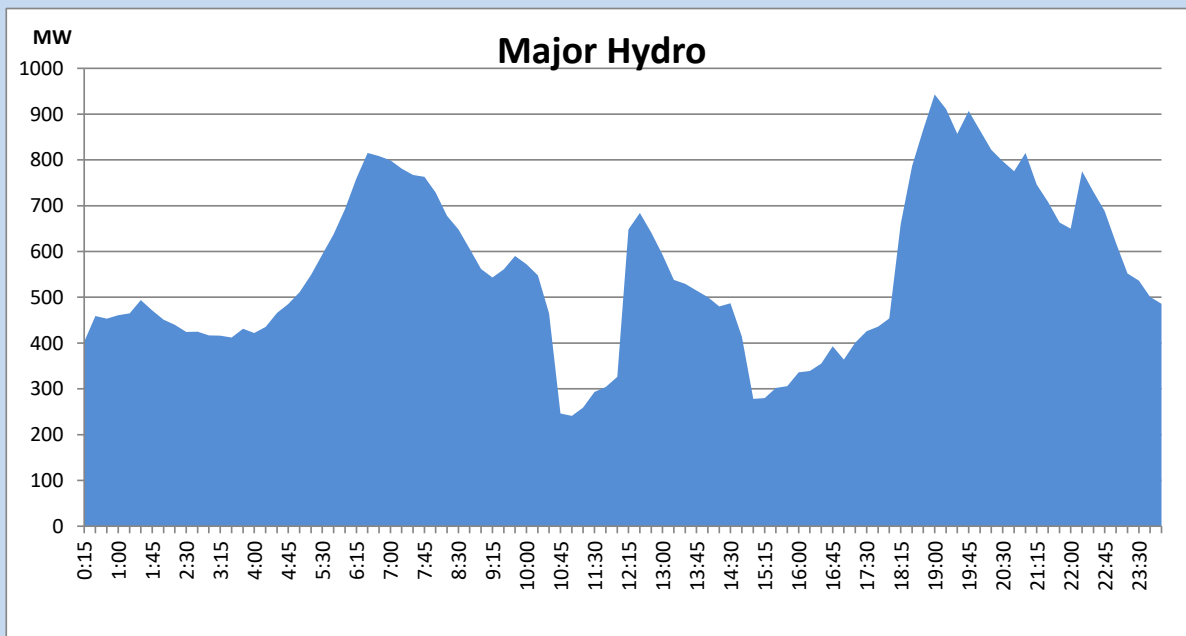
## IPP Oil Plant Generation during the Previous day

July 13, 2022



## Major Hydro Generation during the Previous day

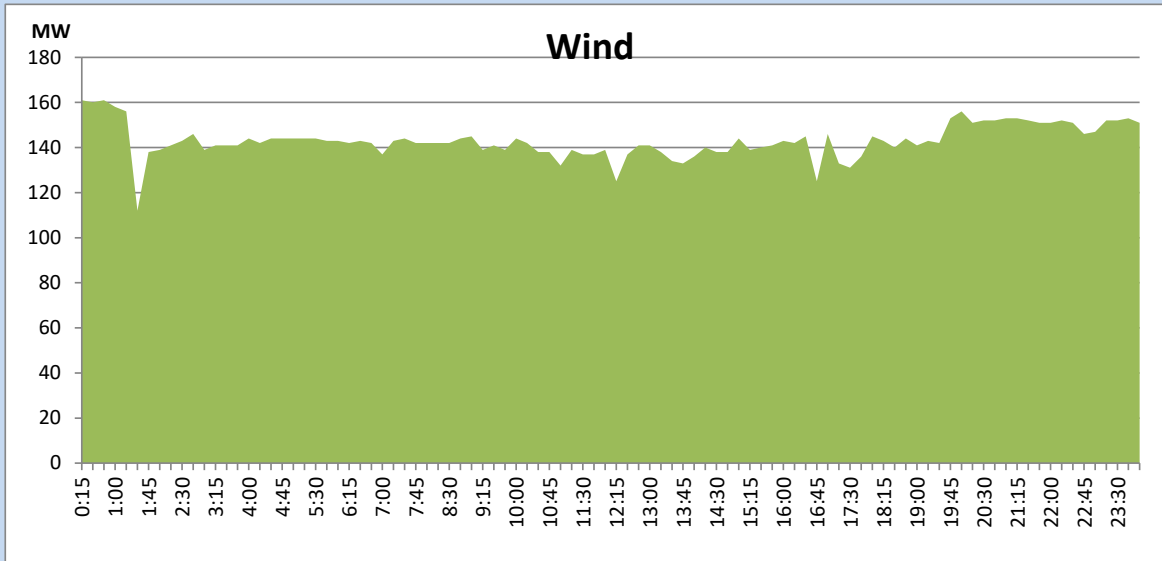
July 13, 2022



## Wind Generation during the Previous day

July 13, 2022

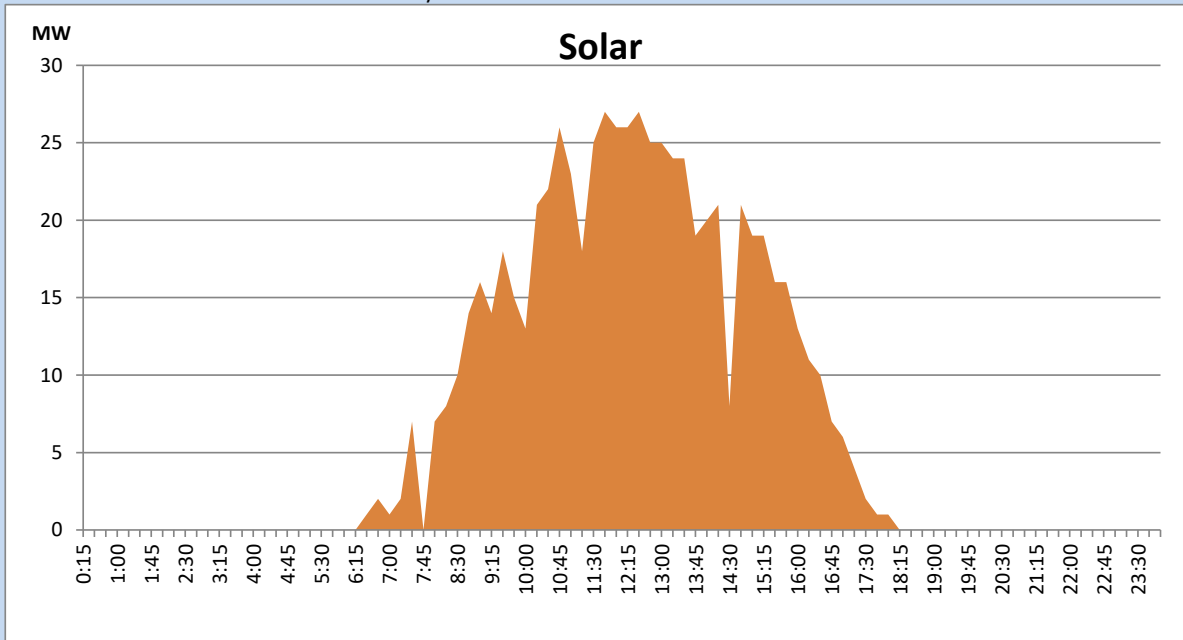
Based on Telemetered Power Stations only



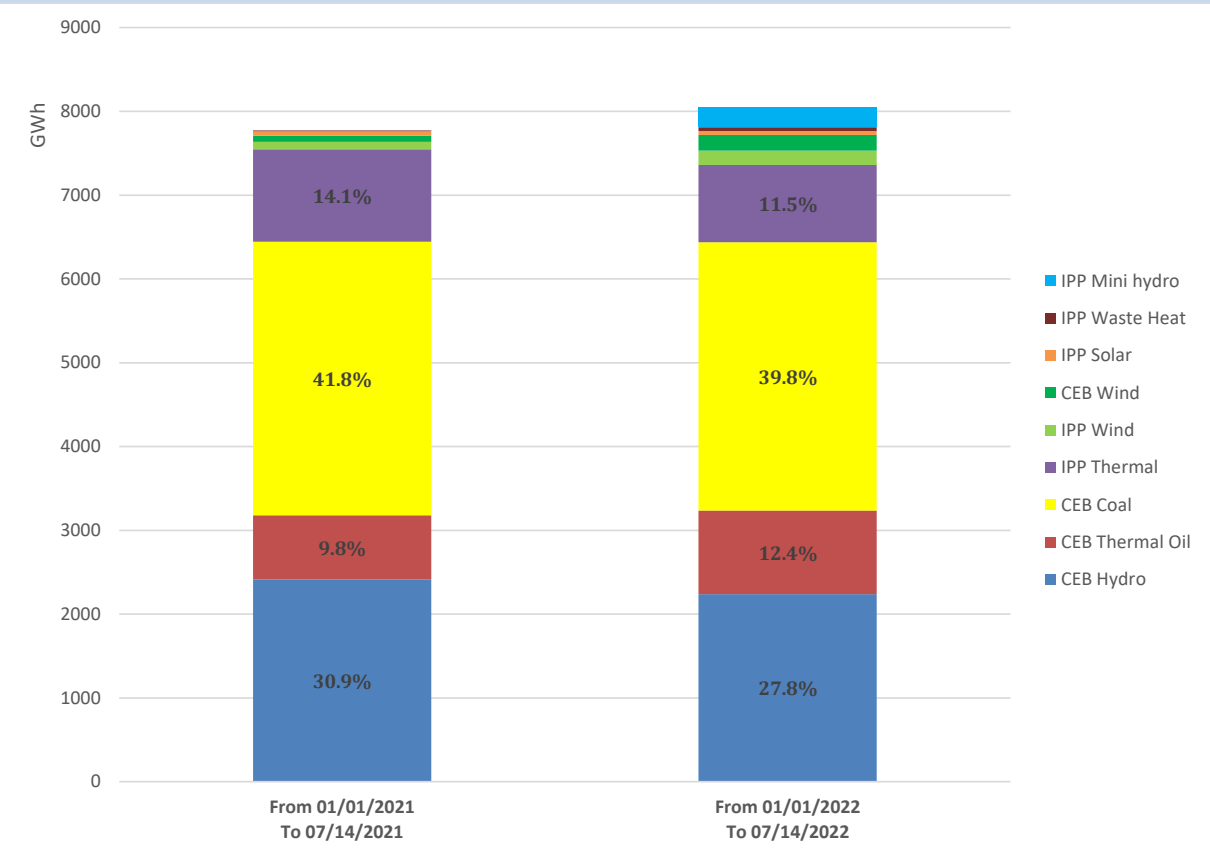
## Solar Generation during the Previous day

July 13, 2022

Based on Telemetered Power Stations only



# Cumulative Dispatch Comparison with Last Year



## Thermal Plant Fuel types

Power Station	Primary Fuel
CEB Thermal	
Sapugaskanda 1	Heavy Fuel
Sapugaskanda 2	Heavy Fuel
Kelanitissa Small Gas Turbines	Auto Diesel
GT 7 - Kelanitissa	Auto Diesel
Kelanitissa CCY	Naphtha or Diesel
Lakvijaya 1	Coal
Lakvijaya 2	Coal
Lakvijaya 3	Coal
Uthuru Janani	Heavy Fuel
Barge CEB	Heavy Fuel

Power Station	Primary Fuel
Private Thermal	
Sojitz - Kelanitissa	Auto Diesel
West Coast	Auto Diesel / Heavy Fuel
ACE Matara	Heavy Fuel
ACE Embilipitiya	Heavy Fuel

## Major Incidents during the day -as reported by CEB morning of

July 15, 2022

- 1) Rotational manual load shedding was carried out from 05:30hrs to 08:30hrs and 13:00 hrs to 22:00 hrs.
- 2) Thulhiriya 132/33kV T/F 02 tripped at 8:34hrs due to operation of Differential protection. Thulhiriya T/F 02 energized at 9:11hrs.
- 3) Kotmale - U'Kotmale cct 02 tripped from both ends at 13:38hrs, due to operation of Differential Protection. As a result of that, at the same time, Kotmale unit 02 tripped and rejected 31MW from the system (Kotmale CB 420 was released for maintenance work). Kotmale unit 02 made available at 14:21hrs. Kotmale - U'Kotmale cct 02 is yet to be restored.