

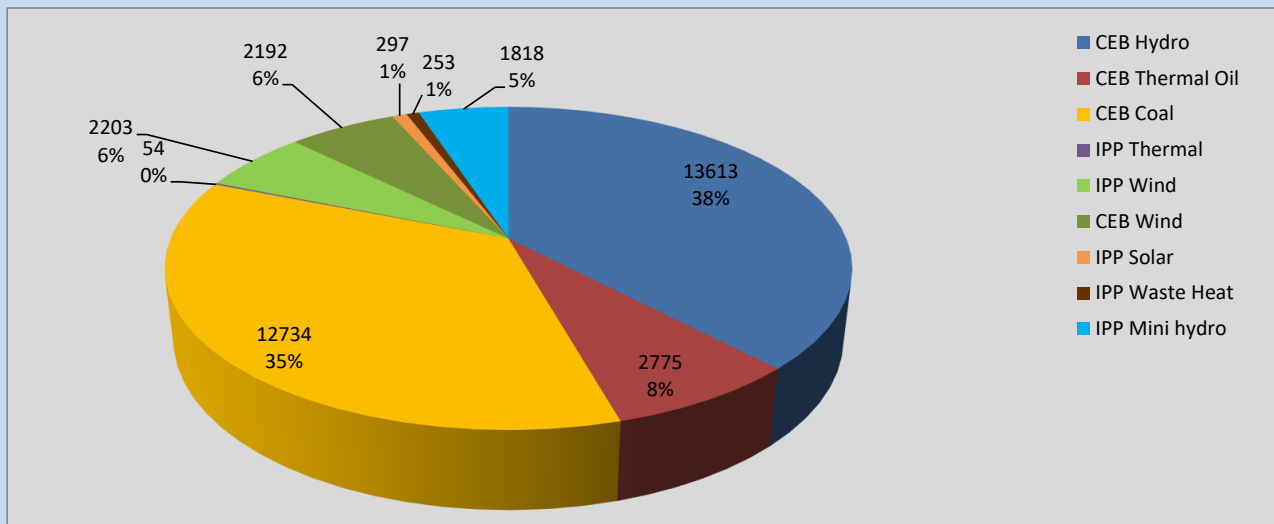
Generation and Reservoirs Statistics

July 13, 2022



PUBLIC UTILITIES COMMISSION OF SRI LANKA

Daily Generation Mix in MWh



Total Generation **35,939 MWh**

Note: Above data is excluding contribution from Roof Top Solar, 1MW Solar and certain Mini Hydro plants

Cumulative Dispatch

Note: Following data is Excluding contribution from Roof Top Solar, 1MW solar and Mini Hydro plants

For Current Month

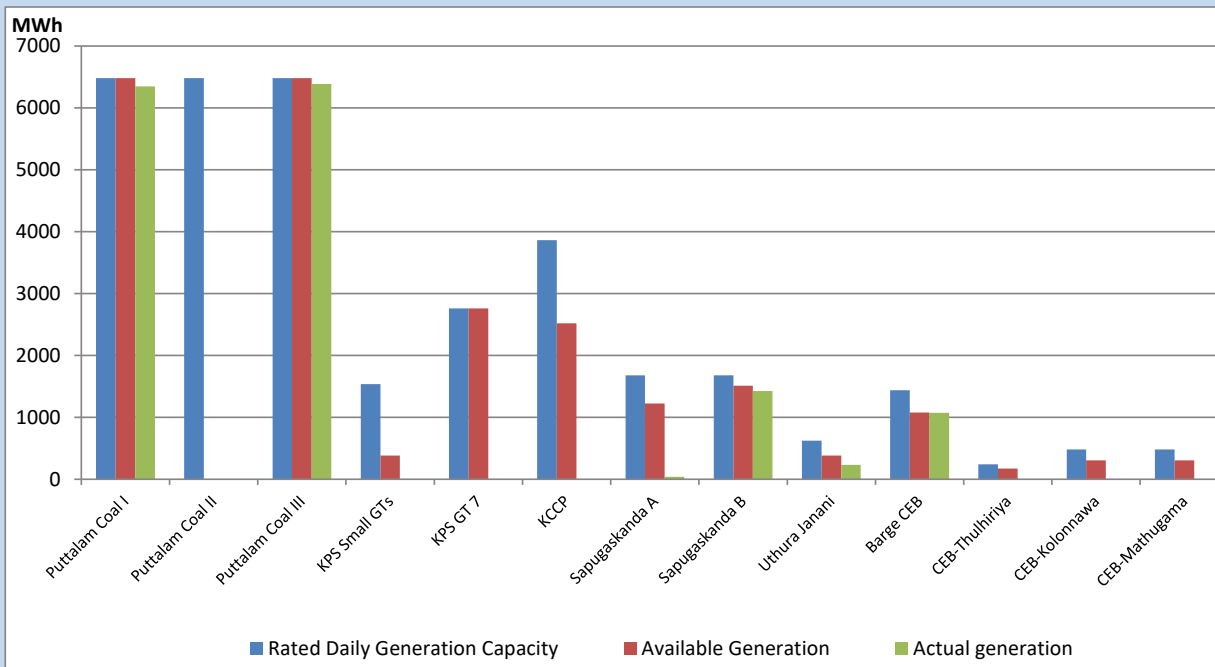
Category	Dispatch (GWh)	Percentage
CEB Hydro	174.25	34.87%
CEB Thermal Oil	52.06	10.42%
CEB Coal	159.49	31.92%
IPP Thermal	48.58	9.72%
SPP Wind	19.35	3.87%
CEB Wind	18.60	3.72%
SPP Solar	3.52	0.70%
SPP Solid Waste	3.32	0.66%
Mini Hydro	20.52	4.11%
Total	499.69	

For Current Year

Category	Dispatch (GWh)	Percentage
CEB Hydro	2,225.6	27.80%
CEB Thermal Oil	992.2	12.39%
CEB Coal	3,187.7	39.81%
IPP Thermal	920.2	11.49%
SPP Wind	169.3	2.11%
CEB Wind	184.5	2.30%
SPP Solar	50.0	0.62%
SPP Solid Waste	41.8	0.52%
Mini Hydro	236.1	2.95%
Total	8,007.1	

CEB owned Thermal Plant Dispatch

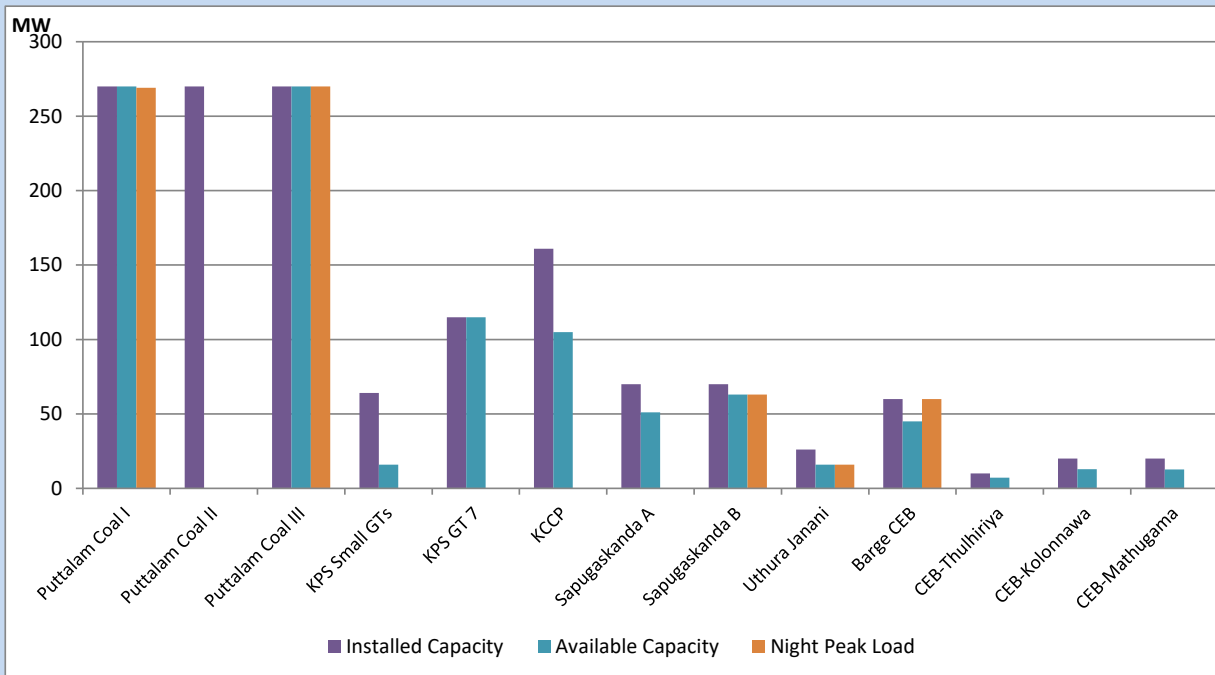
July 13, 2022



Available Generation is estimated based on plant availability at 6.00am on

July 14, 2022

CEB owned Thermal Plant Loading at the Night Peak



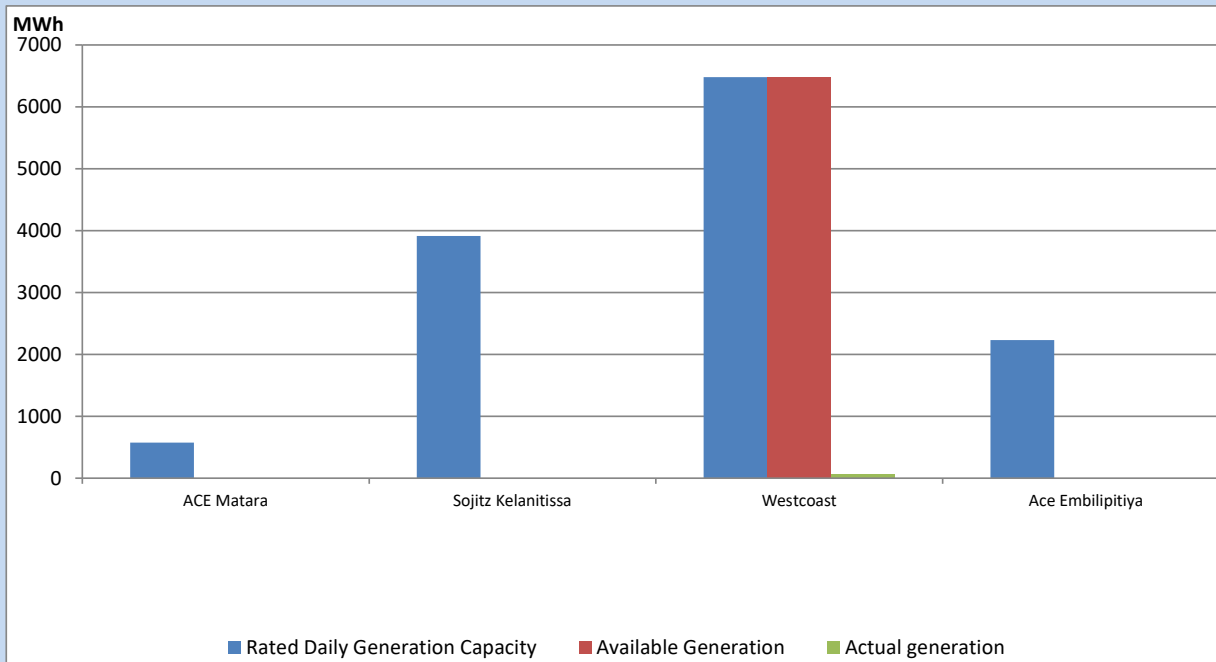
Note- Plant availability is recorded at 6.00 am on

July 14, 2022

IPP owned Thermal Plant Dispatch

July 13, 2022

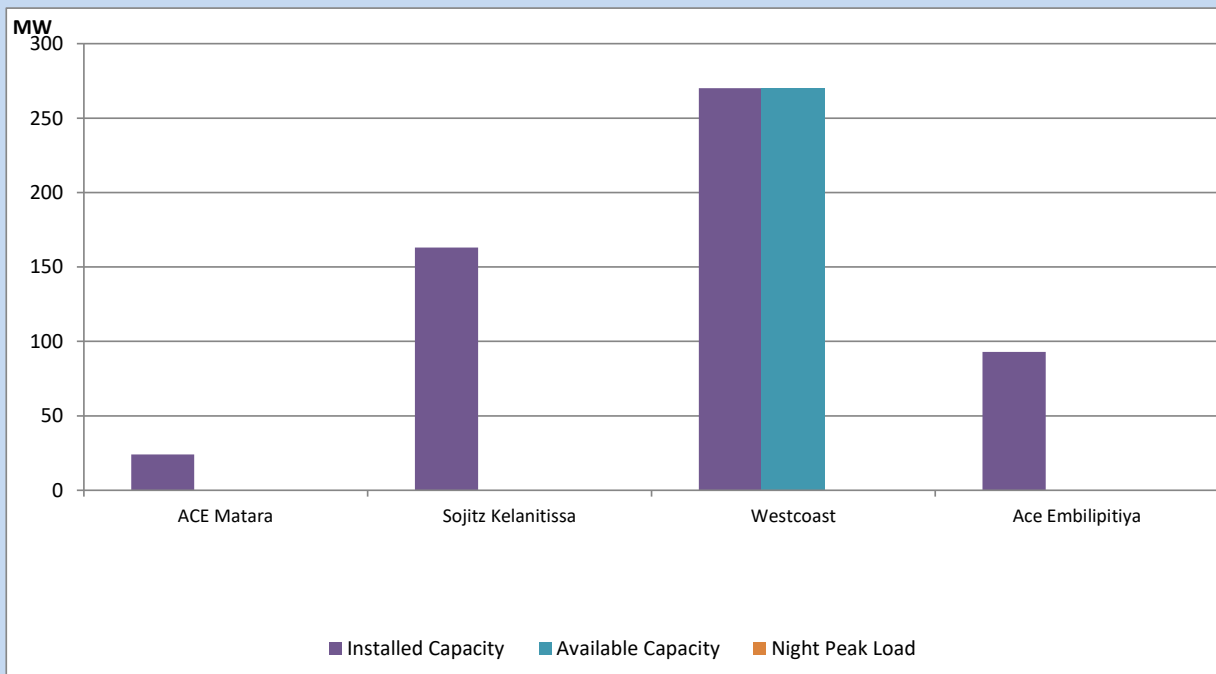
Asia Power, V Power Pallekale, Vpower Galle, V Power Horana, Vpower Hambantota, Vpower Valachchena and Altaqa Mahiyanganaya are not available due to expiration of PPAs



Available Generation is estimated based on plant availability at 6.00am on

July 14, 2022

IPP owned Thermal Plant Loading at the Night Peak

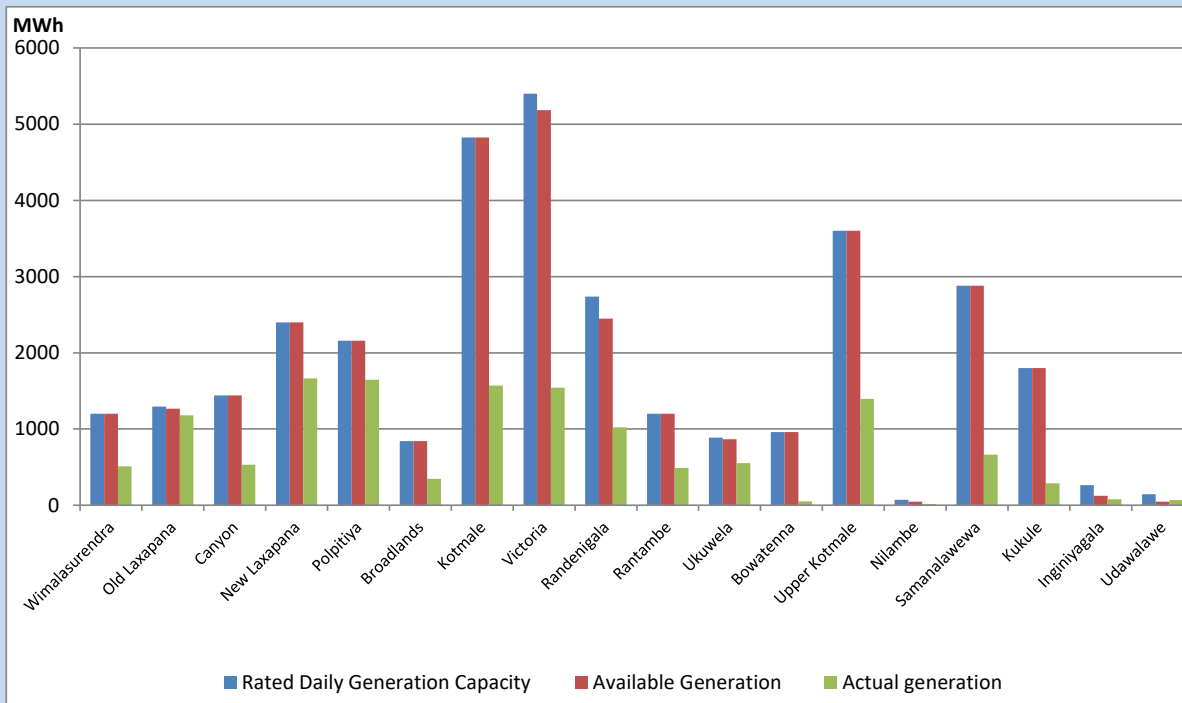


Note- Plant availability is recorded at 6.00 am on

July 14, 2022

Major Hydro Plant Dispatch

July 13, 2022

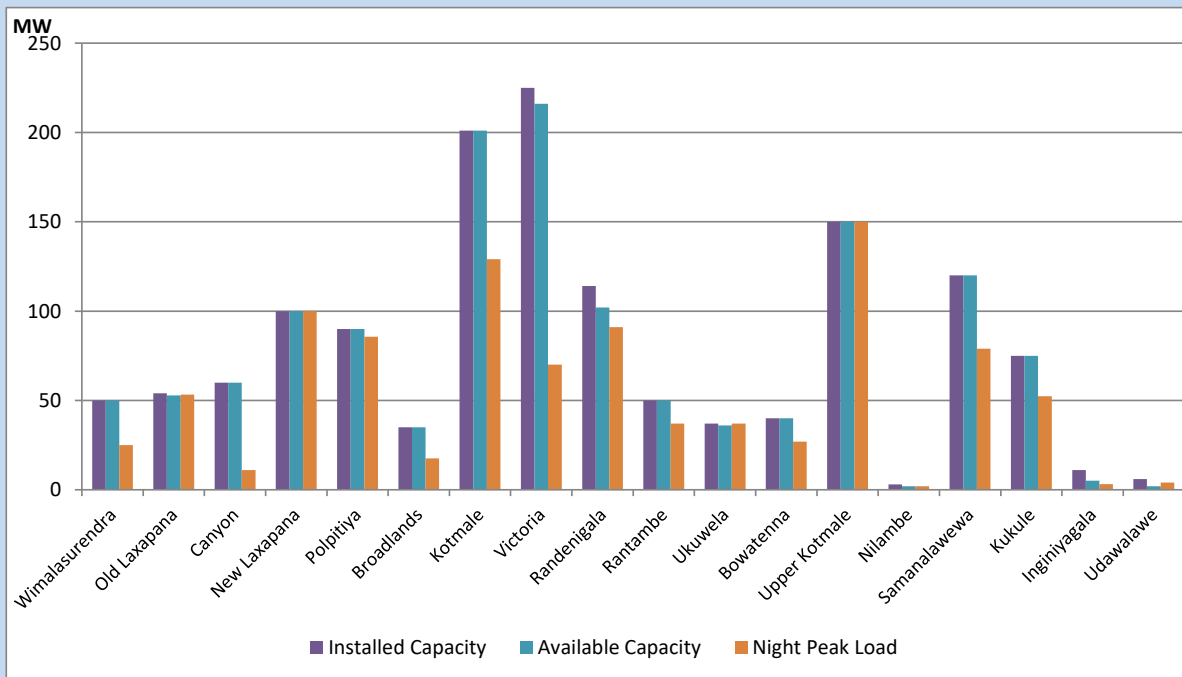


Available Generation is estimated based on plant availability at 6.00am on
Broadlands power plant is operating in the Commissioning Stage

July 14, 2022

Major Hydro Plant Loading at Night Peak

July 13, 2022



Note- Plant availability is recorded at 6.00 am on
Broadlands power plant is operating in the Commissioning Stage

July 14, 2022

Summary of Major Plant performance

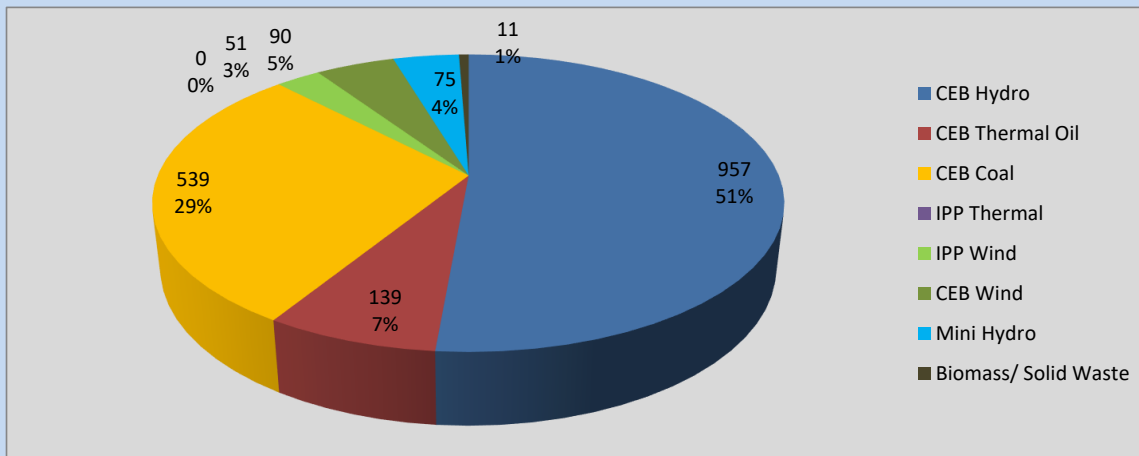
Plant	Installed Capacity	Plant Availability	Night peak Load	Plant Dispatch
	(MW)	(MW)	(MW)	(MWh)
Wimalasurendra	50	50	25	510
Old Laxapana	54	53	53	1,179
Canyon	60	60	11	532
New Laxapana	100	100	100	1,665
Polpitiya	90	90	86	1,647
Broadlands	35	35	18	347
Kotmale	201	201	129	1,570
Victoria	225	216	70	1,543
Randenigala	114	102	91	1,023
Rantambe	50	50	37	488
Ukuwela	37	36	37	552
Bowatenna	40	40	27	50
Upper Kotmale	150	150	150	1,394
Nilambe	3	2	2	17
Samanalawewa	120	120	79	663
Kukule	75	75	52	288
Inginiyagala	11	5	3	77
Udawalawe	6	2	4	68
Puttalam Coal I	270	270	269	6,347
Puttalam Coal II	270	0	0	0
Puttalam Coal III	270	270	270	6,387
KPS Small GTs	64	16	0	0
KPS GT 7	115	115	0	0
KCCP	161	105	0	0
Sapugaskanda A	70	51	0	40
Sapugaskanda B	70	63	63	1,425
Uthura Janani	26	16	16	234
Barge CEB	60	45	60	1,076
CEB-Thulhiriya	10	7	0	0
CEB-Kolonnawa	20	13	0	0
CEB-Mathugama	20	13	0	0
ACE Matara	24	0	0	0
Sojitz Kelanitissa	163	0	0	0
West Coast	270	270	0	54
ACE Embilipitiya	93	0	0	0
Total	3,397	2,641	1,879	35,939

Plant availability is the availability recorded at 6 am on

July 14, 2022

Contribution to the Night Peak in MW

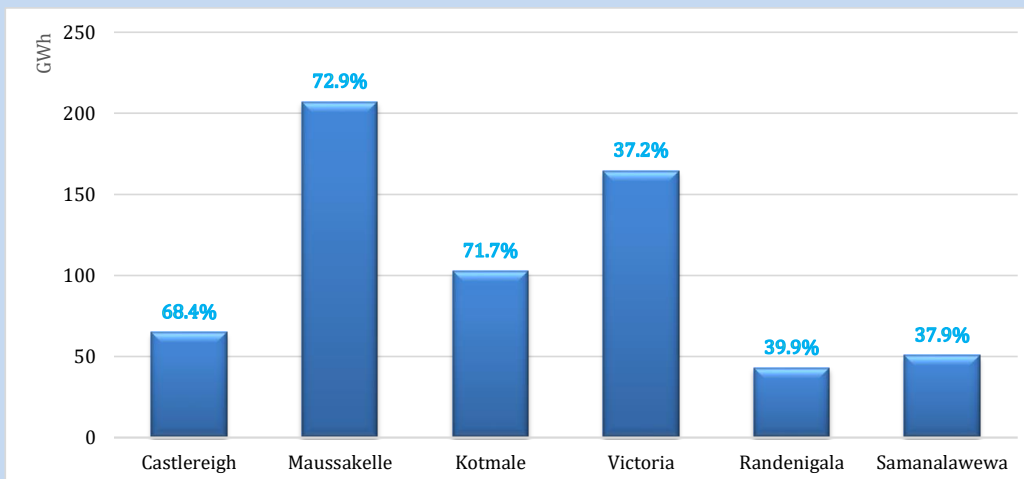
July 13, 2022



Night Peak*	1,862.1 MW
Day Peak	1,509.4 MW
Minimum Demand	1,340.8 MW

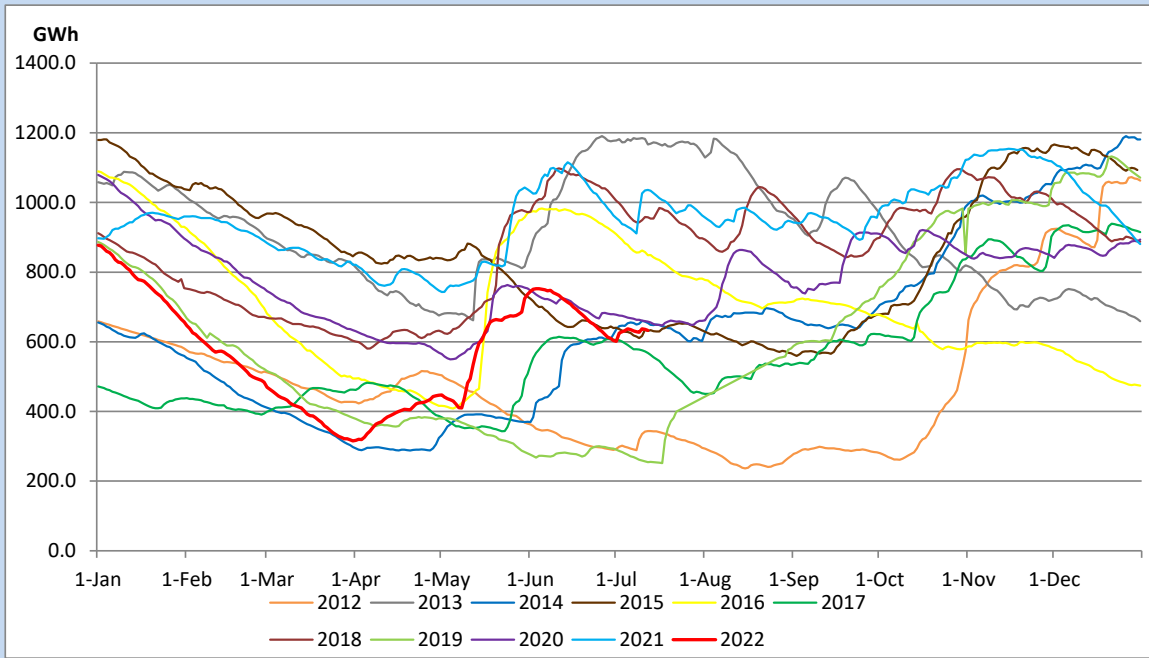
Above figures are excluding contribution from Roof Top Solar, 1MW solar, certain Wind plants and Mini Hydro plants

Reservoir Levels - as at 06.00 Hr on July 14, 2022

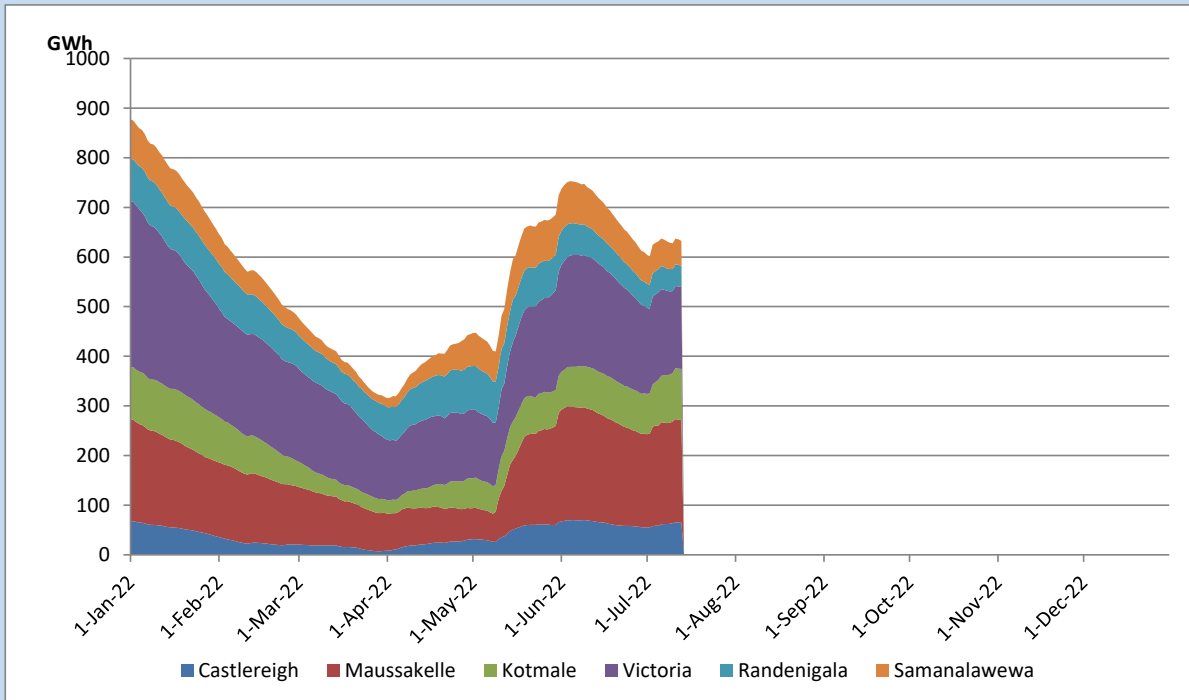


Total Reservoir Level	632.5 GWh
% of Total capacity	52.5%

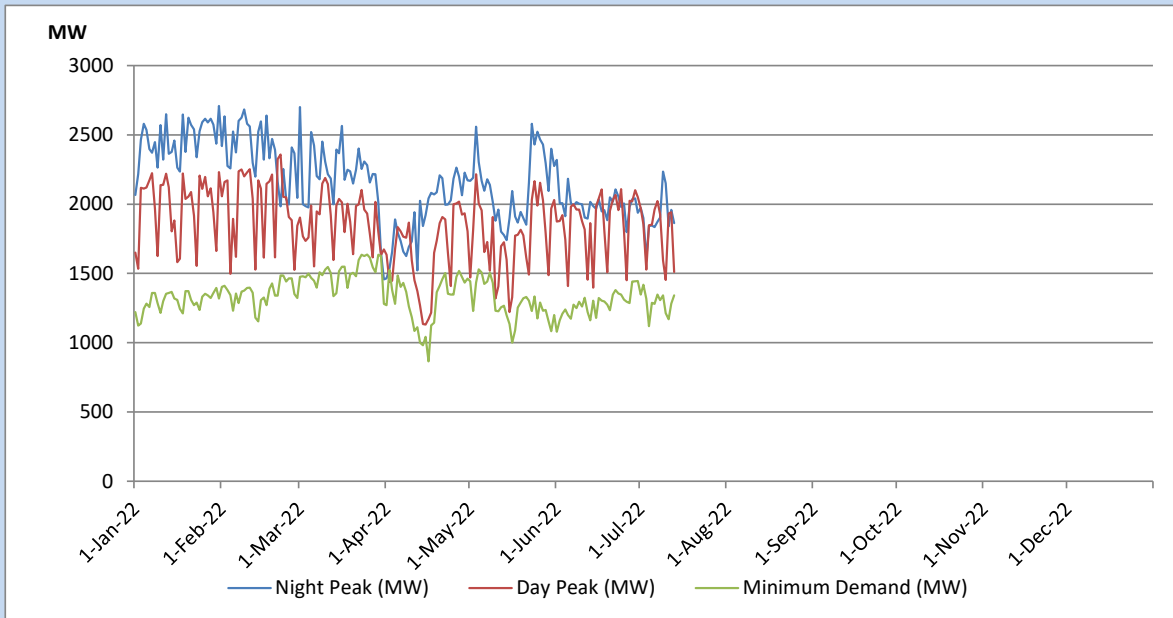
Comparison of Total Reservoir Storage Levels with Past Years



Variation of Major Hydro Reservoir Levels in the current year (GWh)



Variation of Demand during the current year

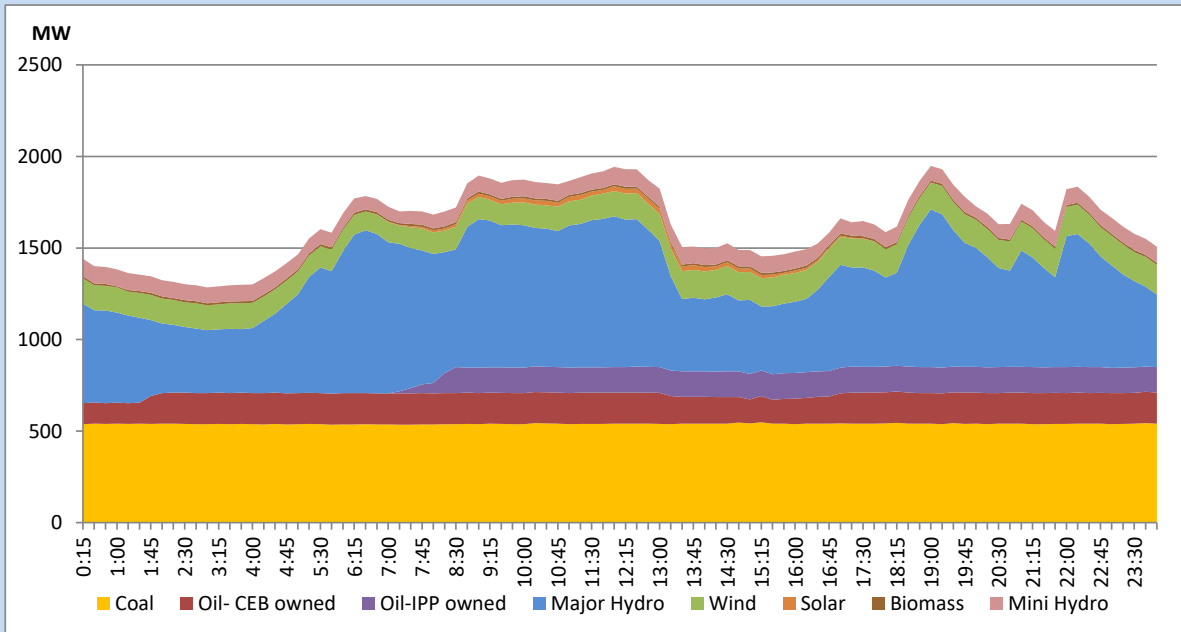


The above figures are excluding contribution from Roof Top Solar, 1MW solar, certain Wind plants and Mini Hydro plants

Daily Load Curve of the Previous day

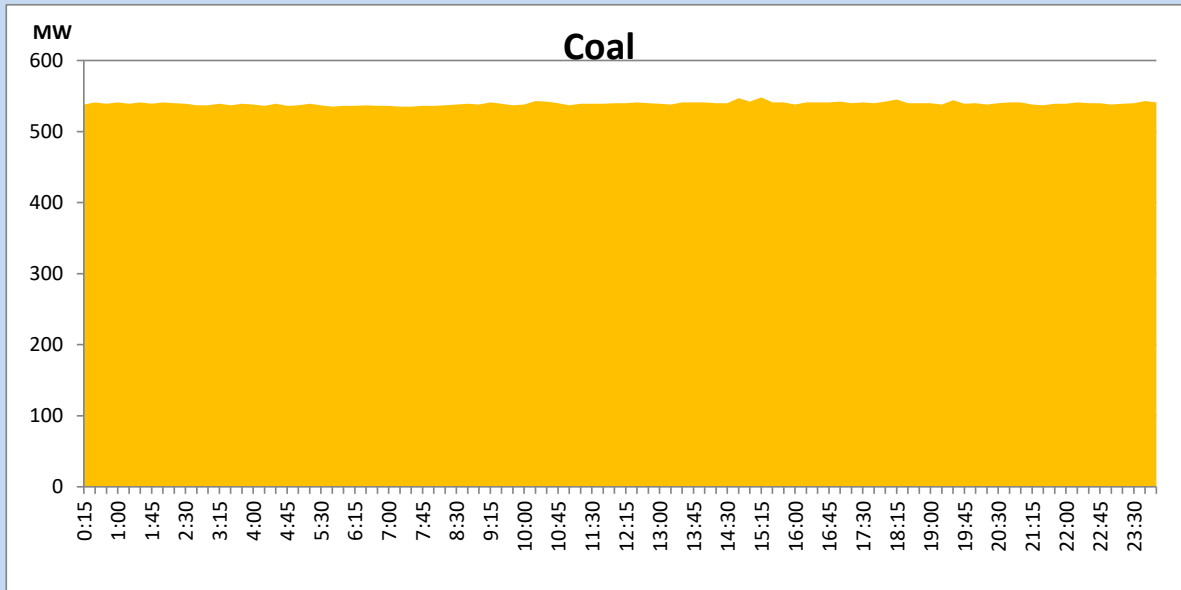
July 12, 2022

Solar and wind data is based on Telemetered Power Stations only



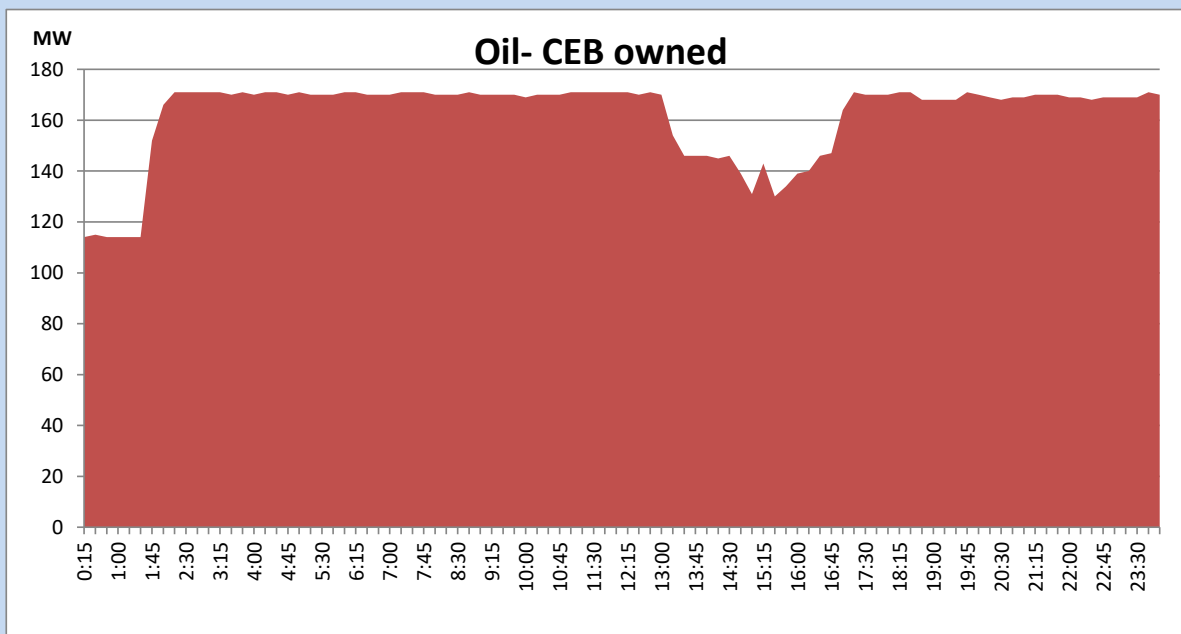
Coal Generation during the Previous day

July 12, 2022



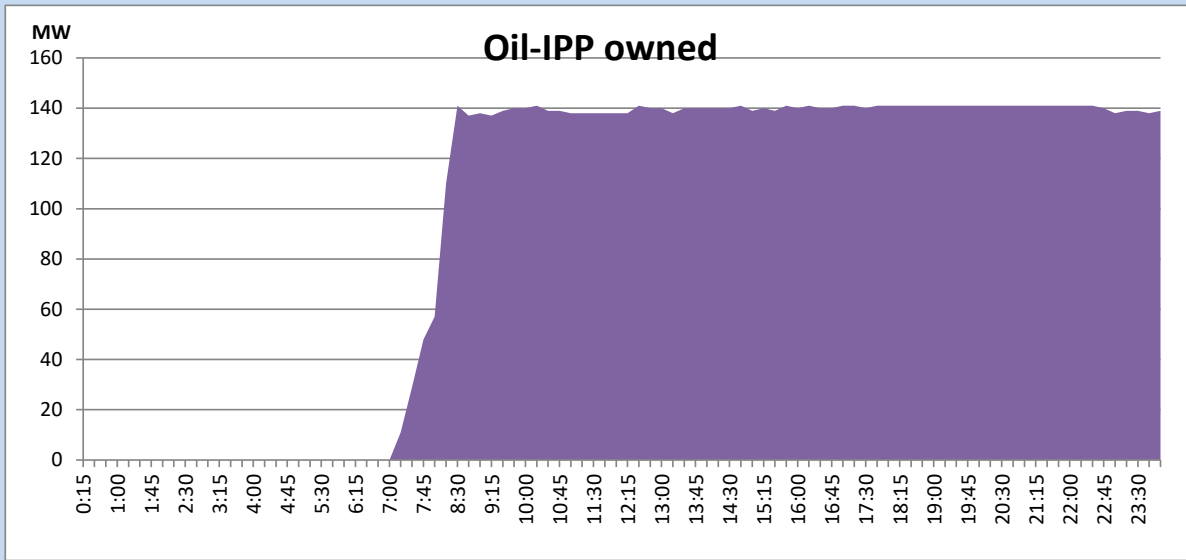
CEB Oil Plant Generation during the Previous day

July 12, 2022



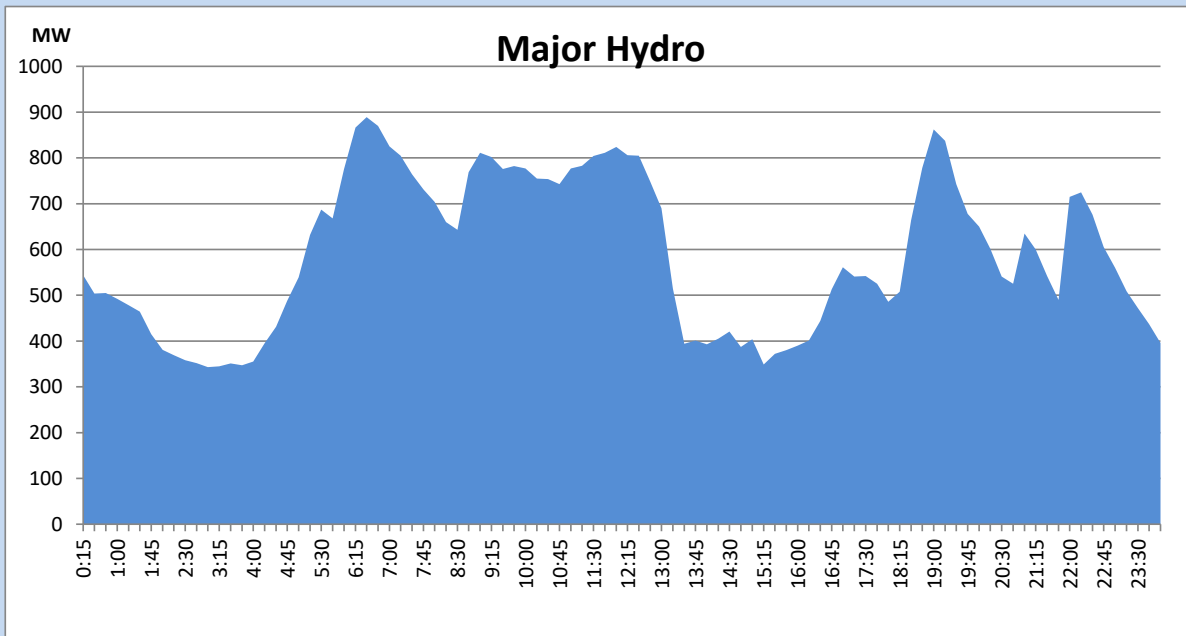
IPP Oil Plant Generation during the Previous day

July 12, 2022



Major Hydro Generation during the Previous day

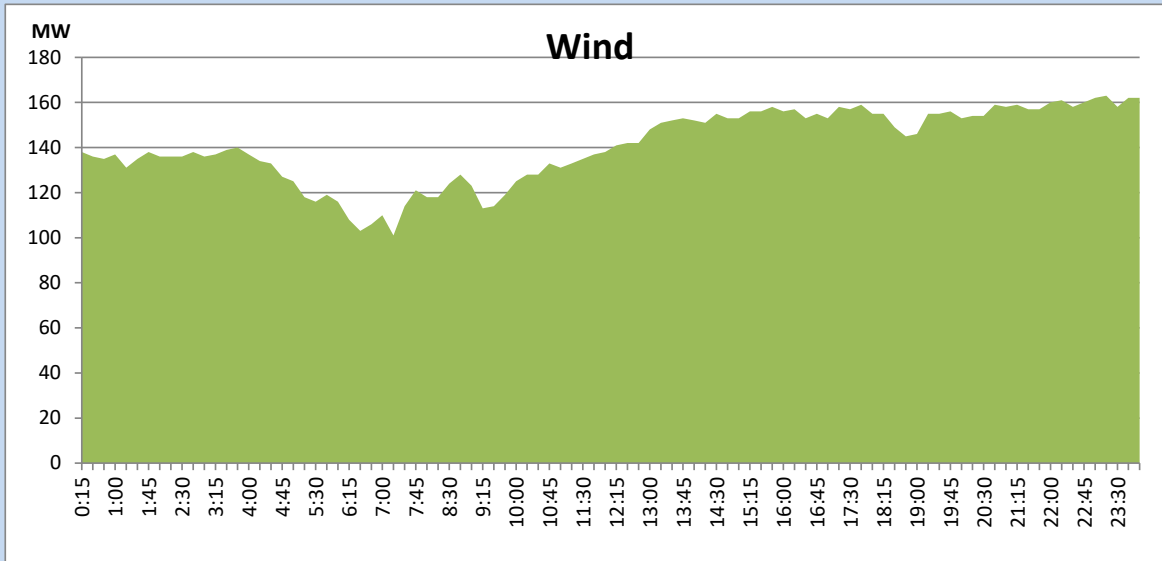
July 12, 2022



Wind Generation during the Previous day

July 12, 2022

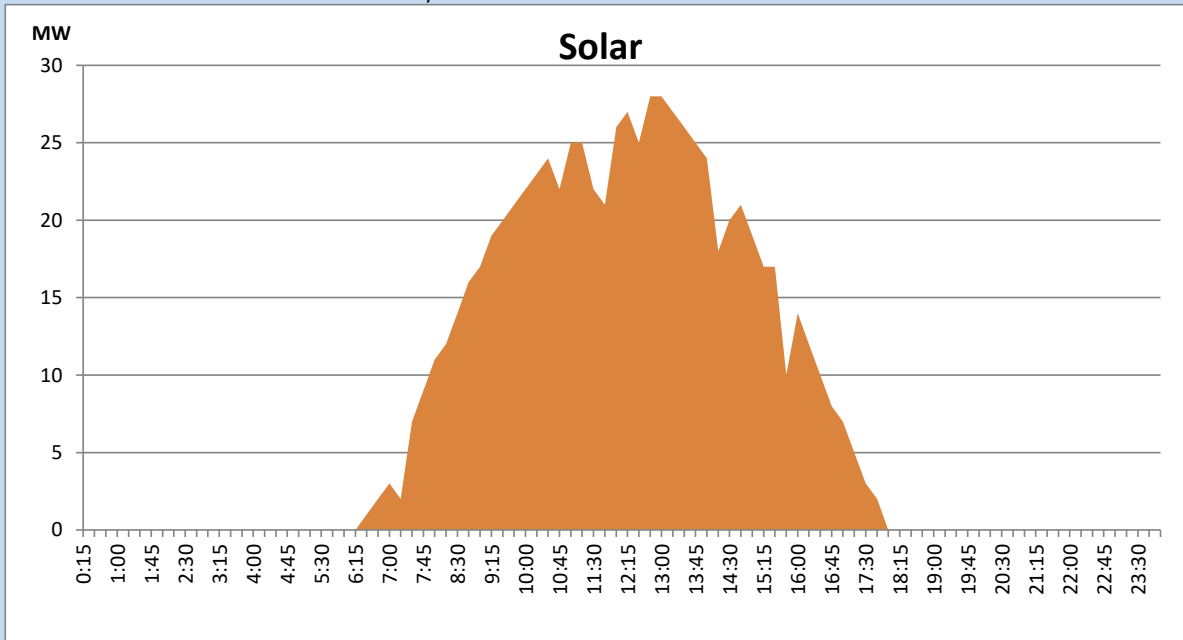
Based on Telemetered Power Stations only



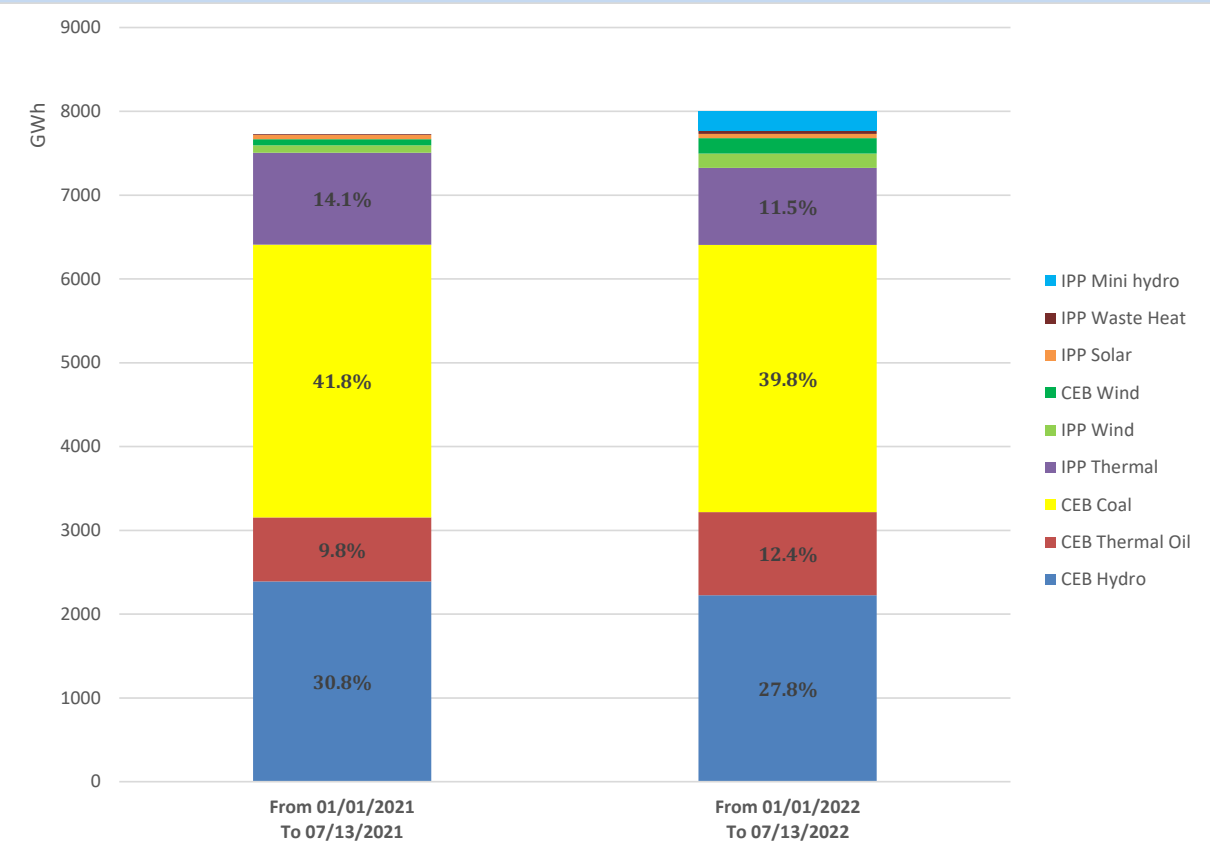
Solar Generation during the Previous day

July 12, 2022

Based on Telemetered Power Stations only



Cumulative Dispatch Comparison with Last Year



Thermal Plant Fuel types

Power Station	Primary Fuel
CEB Thermal	
Sapugaskanda 1	Heavy Fuel
Sapugaskanda 2	Heavy Fuel
Kelanitissa Small Gas Turbines	Auto Diesel
GT 7 - Kelanitissa	Auto Diesel
Kelanitissa CCY	Naphtha or Diesel
Lakvijaya 1	Coal
Lakvijaya 2	Coal
Lakvijaya 3	Coal
Uthuru Janani	Heavy Fuel
Barge CEB	Heavy Fuel

Power Station	Primary Fuel
Private Thermal	
Sojitz - Kelanitissa	Auto Diesel
West Coast	Auto Diesel / Heavy Fuel
ACE Matara	Heavy Fuel
ACE Embilipitiya	Heavy Fuel

Major Incidents during the day -as reported by CEB morning of

July 14, 2022

1) Rotational manual load shedding was carried out from 10:20 hrs to 12:00 hrs and 14:40 hrs to 22:00 hrs.

2) N'Habarana-O'Habarana cct-01 tripped from O'Habarana end at 09:56 hrs due to operation of E/F protection causing Polonnaruwa & Valachchenai GSS to be dead (N'Habarana 220KV switch yard was taken out for project work). N'Habarana-O'Habarana cct-01 and affected feeders were normalized at 10:14 hrs.