

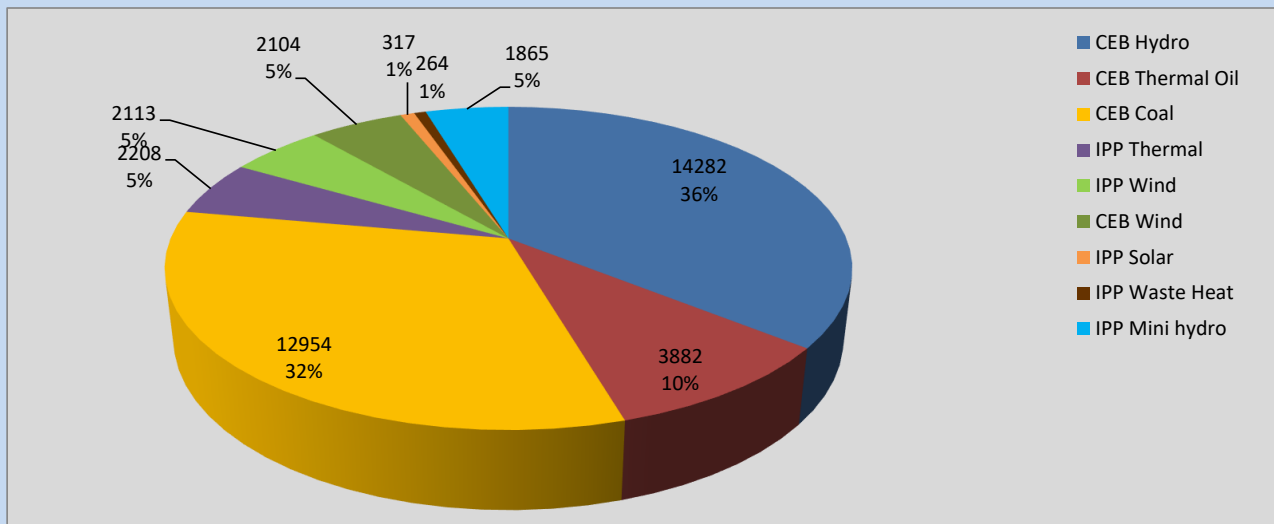
# Generation and Reservoirs Statistics

July 12, 2022



PUBLIC UTILITIES COMMISSION OF SRI LANKA

## Daily Generation Mix in MWh



**Total Generation** **39,989 MWh**

Note: Above data is excluding contribution from Roof Top Solar, 1MW Solar and certain Mini Hydro plants

## Cumulative Dispatch

Note: Following data is Excluding contribution from Roof Top Solar, 1MW solar and Mini Hydro plants

### For Current Month

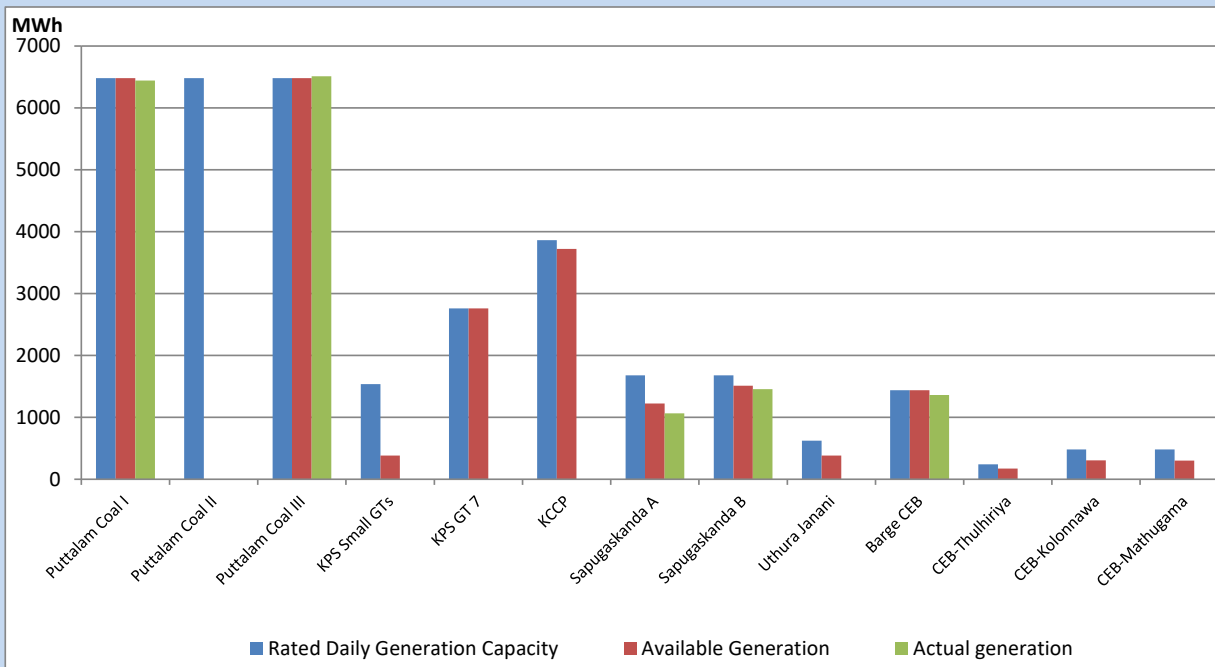
Category	Dispatch (GWh)	Percentage
CEB Hydro	160.63	34.64%
CEB Thermal Oil	49.29	10.63%
CEB Coal	146.76	31.65%
IPP Thermal	48.53	10.46%
SPP Wind	17.15	3.70%
CEB Wind	16.41	3.54%
SPP Solar	3.22	0.69%
SPP Solid Waste	3.07	0.66%
Mini Hydro	18.70	4.03%
<b>Total</b>	<b>463.76</b>	

### For Current Year

Category	Dispatch (GWh)	Percentage
CEB Hydro	2,212.0	27.75%
CEB Thermal Oil	989.4	12.41%
CEB Coal	3,175.0	39.83%
IPP Thermal	920.1	11.54%
SPP Wind	167.1	2.10%
CEB Wind	182.3	2.29%
SPP Solar	49.7	0.62%
SPP Solid Waste	41.6	0.52%
Mini Hydro	234.3	2.94%
<b>Total</b>	<b>7,971.1</b>	

## CEB owned Thermal Plant Dispatch

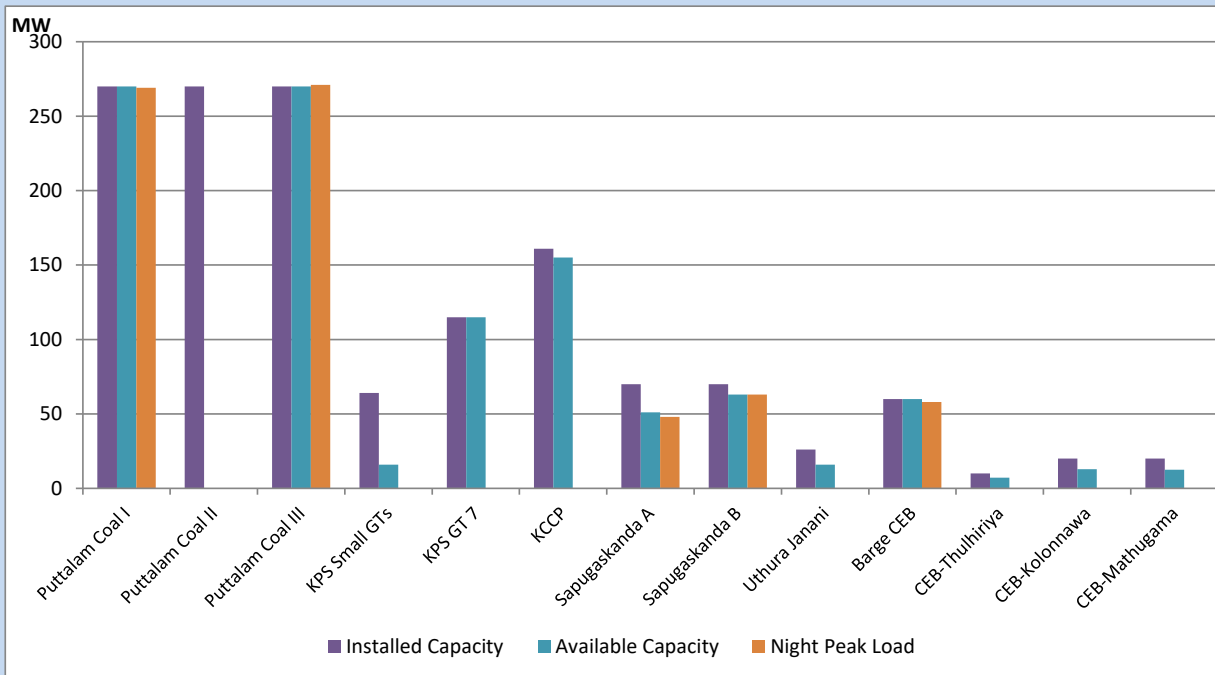
July 12, 2022



Available Generation is estimated based on plant availability at 6.00am on

July 13, 2022

## CEB owned Thermal Plant Loading at the Night Peak



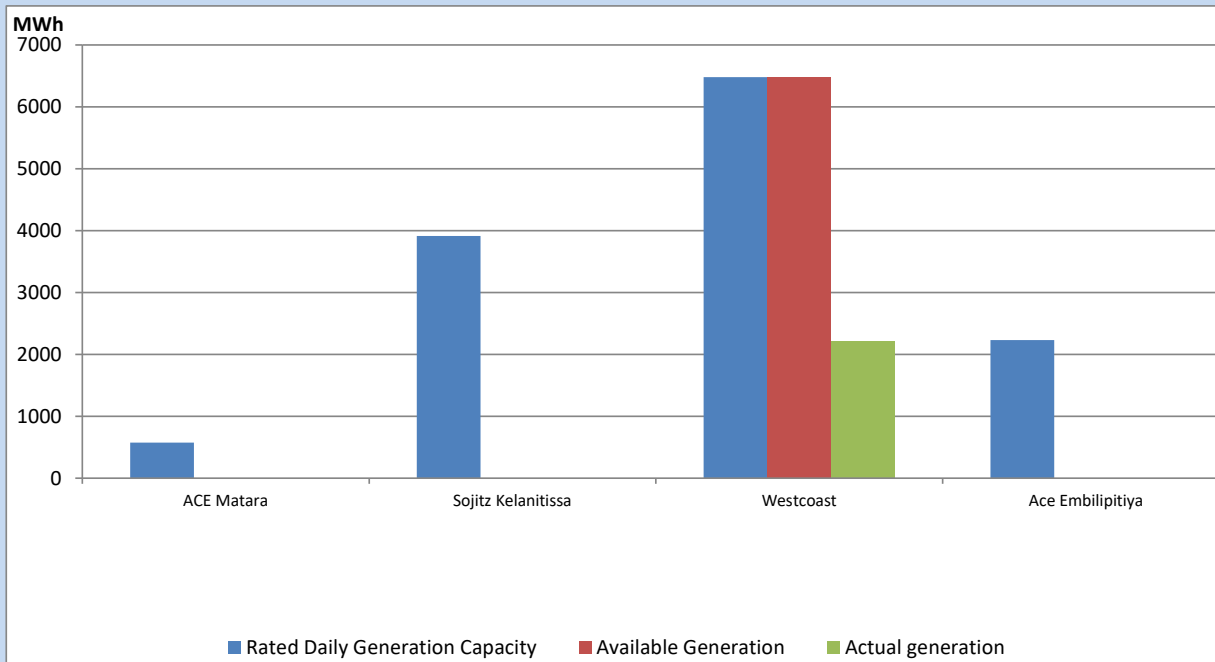
Note- Plant availability is recorded at 6.00 am on

July 13, 2022

## IPP owned Thermal Plant Dispatch

July 12, 2022

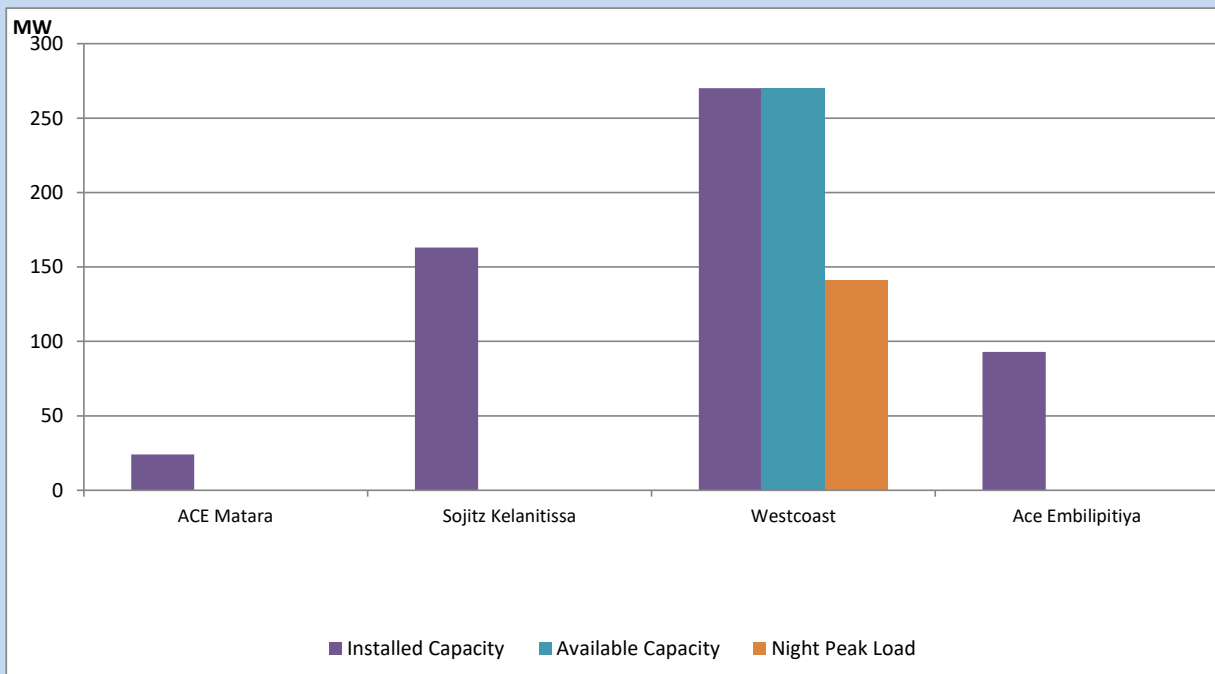
Asia Power, V Power Pallekale, Vpower Galle, V Power Horana, Vpower Hambantota, Vpower Valachchena and Altaqa Mahiyanganaya are not available due to expiration of PPAs



Available Generation is estimated based on plant availability at 6.00am on

July 13, 2022

## IPP owned Thermal Plant Loading at the Night Peak

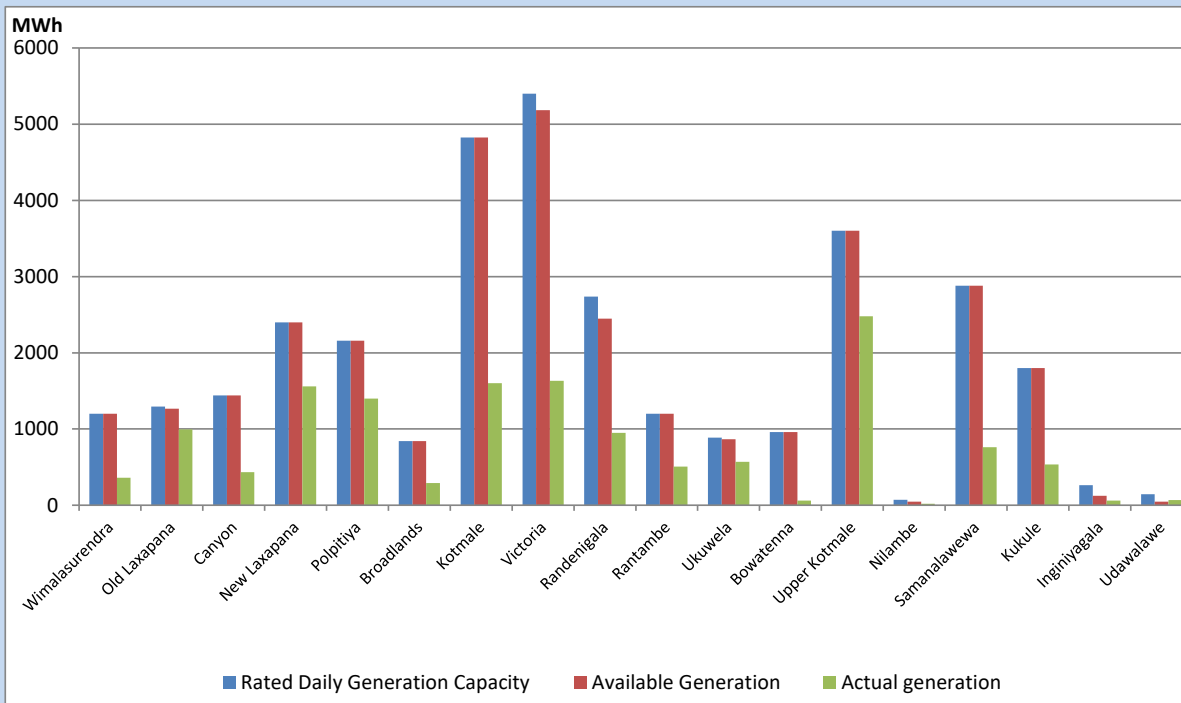


Note- Plant availability is recorded at 6.00 am on

July 13, 2022

## Major Hydro Plant Dispatch

July 12, 2022

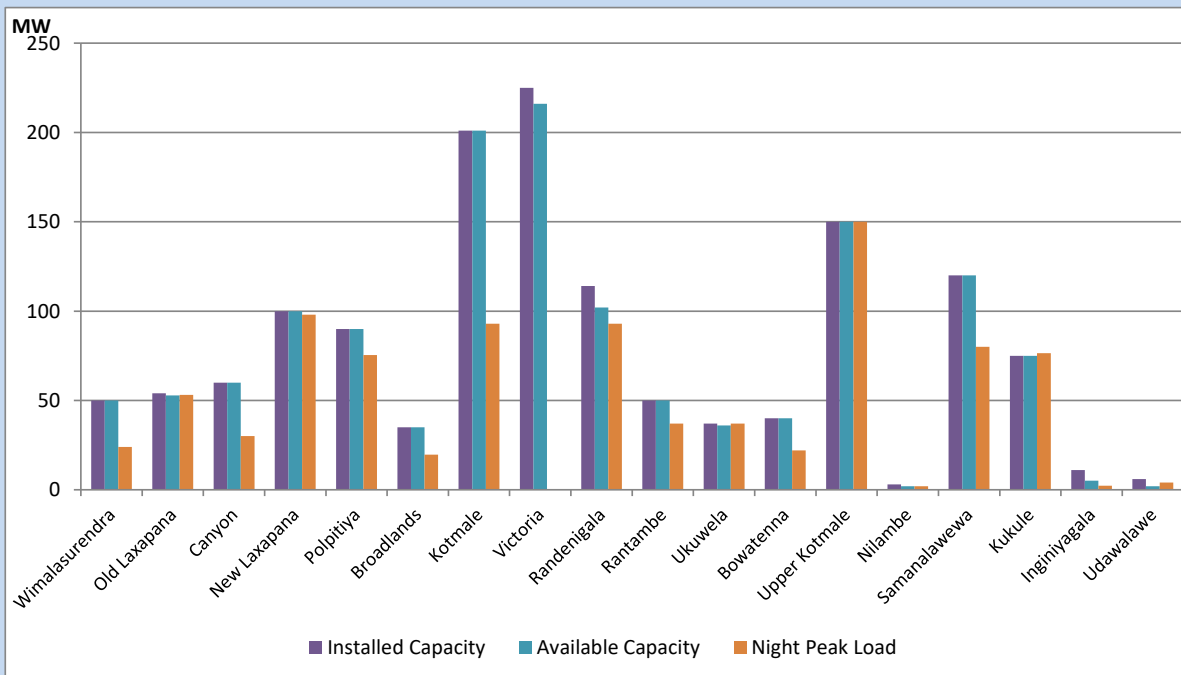


Available Generation is estimated based on plant availability at 6.00am on  
Broadlands power plant is operating in the Commissioning Stage

July 13, 2022

## Major Hydro Plant Loading at Night Peak

July 12, 2022



Note- Plant availability is recorded at 6.00 am on  
Broadlands power plant is operating in the Commissioning Stage

July 13, 2022

## Summary of Major Plant performance

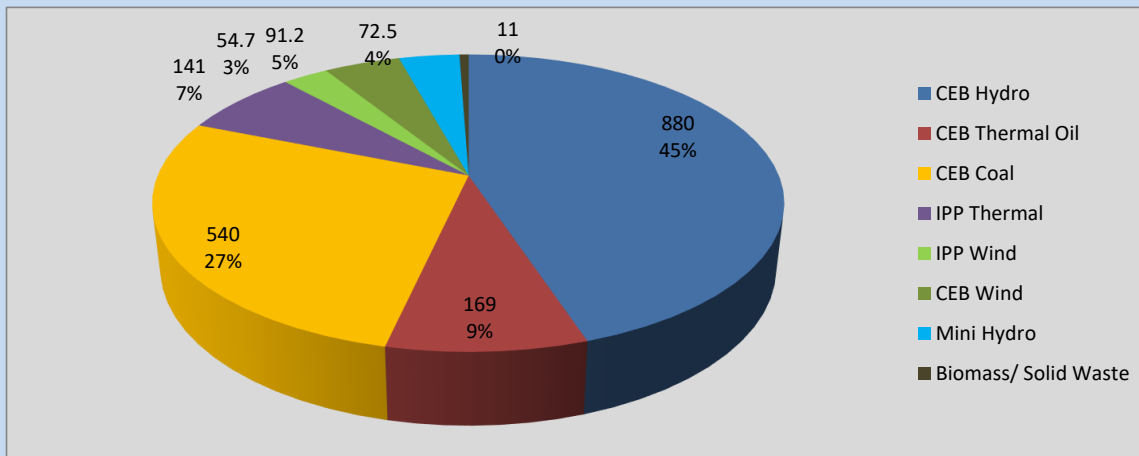
Plant	Installed Capacity	Plant Availability	Night peak Load	Plant Dispatch
	(MW)	(MW)	(MW)	(MWh)
Wimalasurendra	50	50	24	362
Old Laxapana	54	53	53	995
Canyon	60	60	30	433
New Laxapana	100	100	98	1,560
Polpitiya	90	90	75	1,398
Broadlands	35	35	20	290
Kotmale	201	201	93	1,600
Victoria	225	216	0	1,632
Randenigala	114	102	93	951
Rantambe	50	50	37	505
Ukuwela	37	36	37	570
Bowatenna	40	40	22	60
Upper Kotmale	150	150	150	2,480
Nilambe	3	2	2	19
Samanalawewa	120	120	80	762
Kukule	75	75	76	536
Inginiyagala	11	5	2	61
Udawalawe	6	2	4	68
Puttalam Coal I	270	270	269	6,442
Puttalam Coal II	270	0	0	0
Puttalam Coal III	270	270	271	6,512
KPS Small GTs	64	16	0	0
KPS GT 7	115	115	0	0
KCCP	161	155	0	0
Sapugaskanda A	70	51	48	1,066
Sapugaskanda B	70	63	63	1,456
Uthura Janani	26	16	0	0
Barge CEB	60	60	58	1,360
CEB-Thulhiriya	10	7	0	0
CEB-Kolonnawa	20	13	0	0
CEB-Mathugama	20	13	0	0
ACE Matara	24	0	0	0
Sojitz Kelanitissa	163	0	0	0
West Coast	270	270	141	2,208
ACE Embilipitiya	93	0	0	0
<b>Total</b>	<b>3,397</b>	<b>2,706</b>	<b>1,976</b>	<b>39,989</b>

Plant availability is the availability recorded at 6 am on

July 13, 2022

## Contribution to the Night Peak in MW

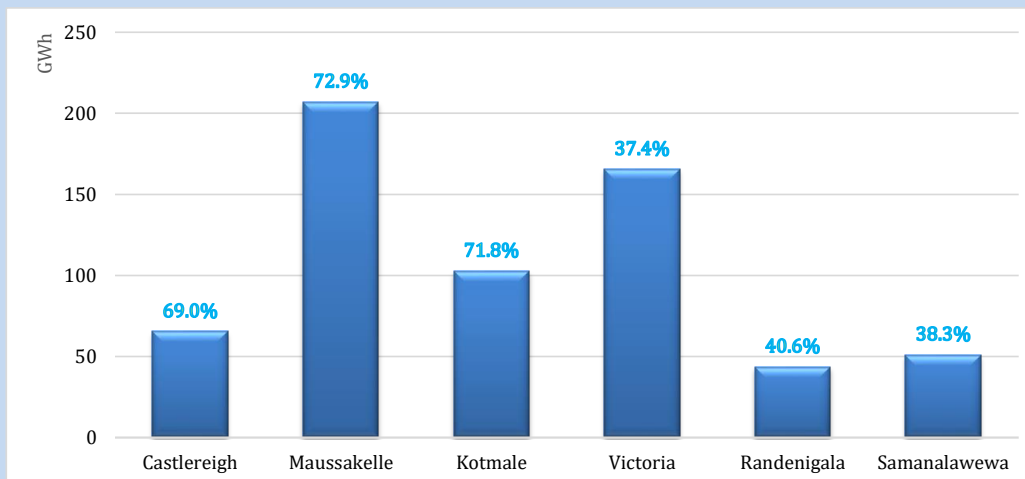
July 12, 2022



Night Peak*	1,959.3 MW
Day Peak	1,940.6 MW
Minimum Demand	1,282.7 MW

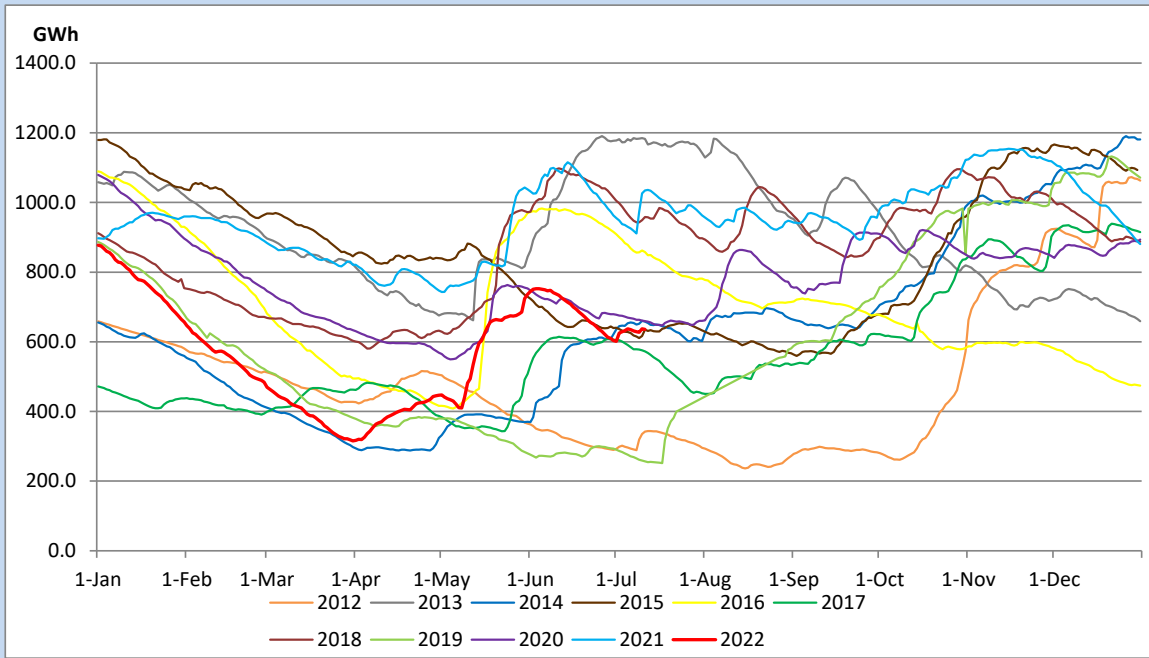
Above figures are excluding contribution from Roof Top Solar, 1MW solar, certain Wind plants and Mini Hydro plants

## Reservoir Levels - as at 06.00 Hr on July 13, 2022

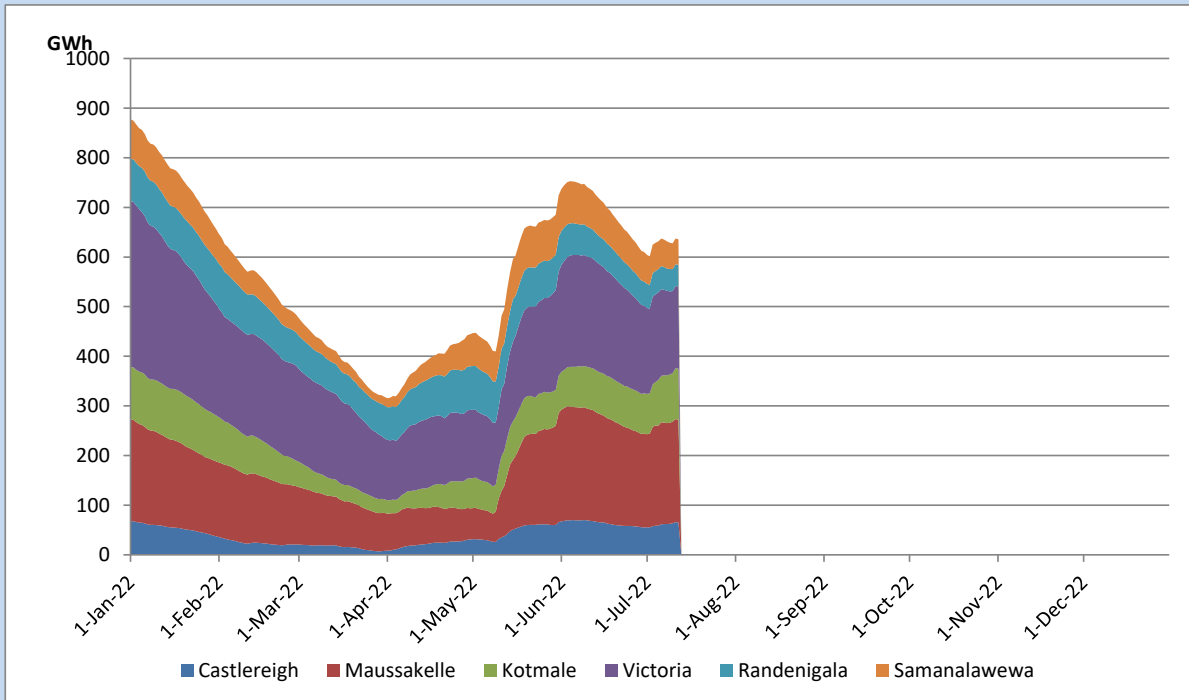


Total Reservoir Level	635.6 GWh
% of Total capacity	52.7%

## Comparison of Total Reservoir Storage Levels with Past Years

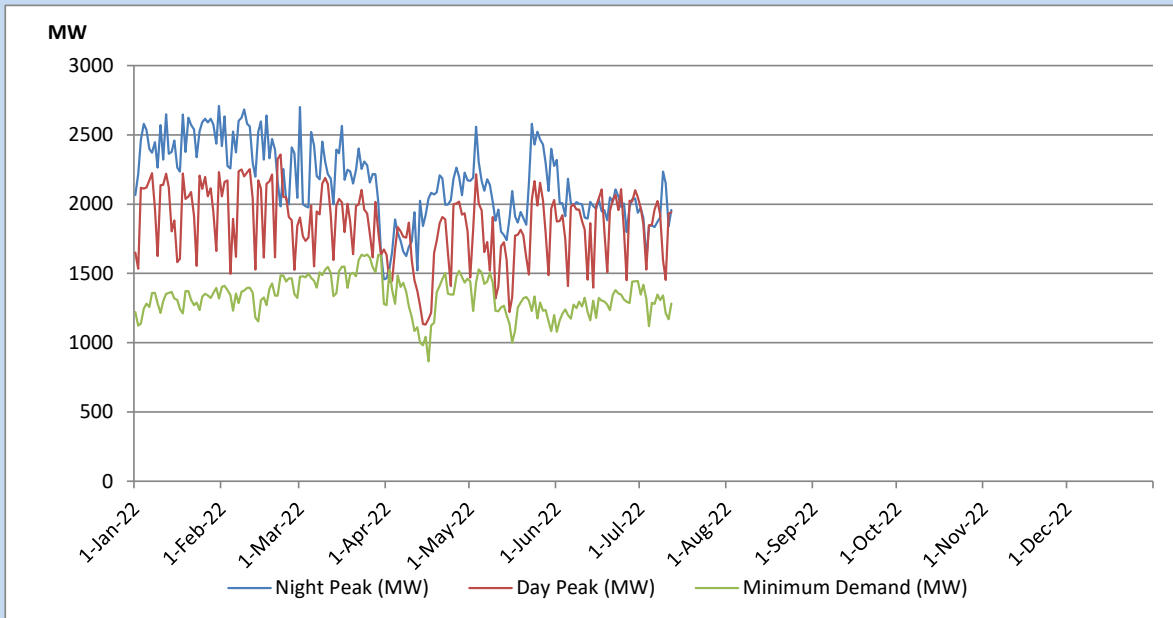


## Variation of Major Hydro Reservoir Levels in the current year (GWh)





## Variation of Demand during the current year

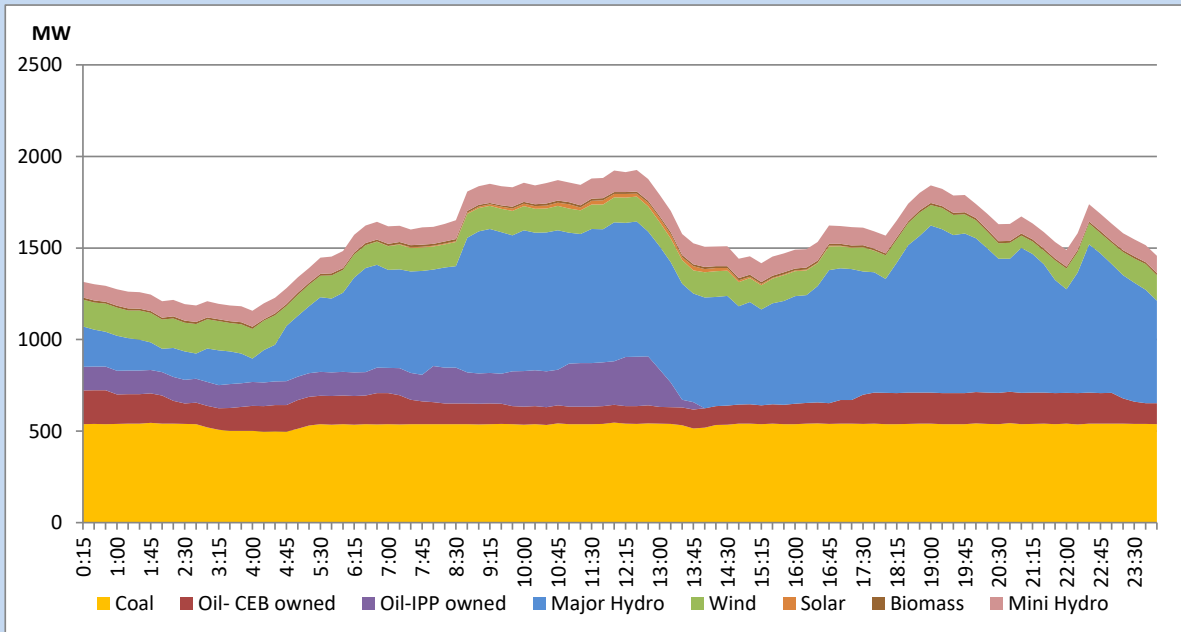


The above figures are excluding contribution from Roof Top Solar, 1MW solar, certain Wind plants and Mini Hydro plants

## Daily Load Curve of the Previous day

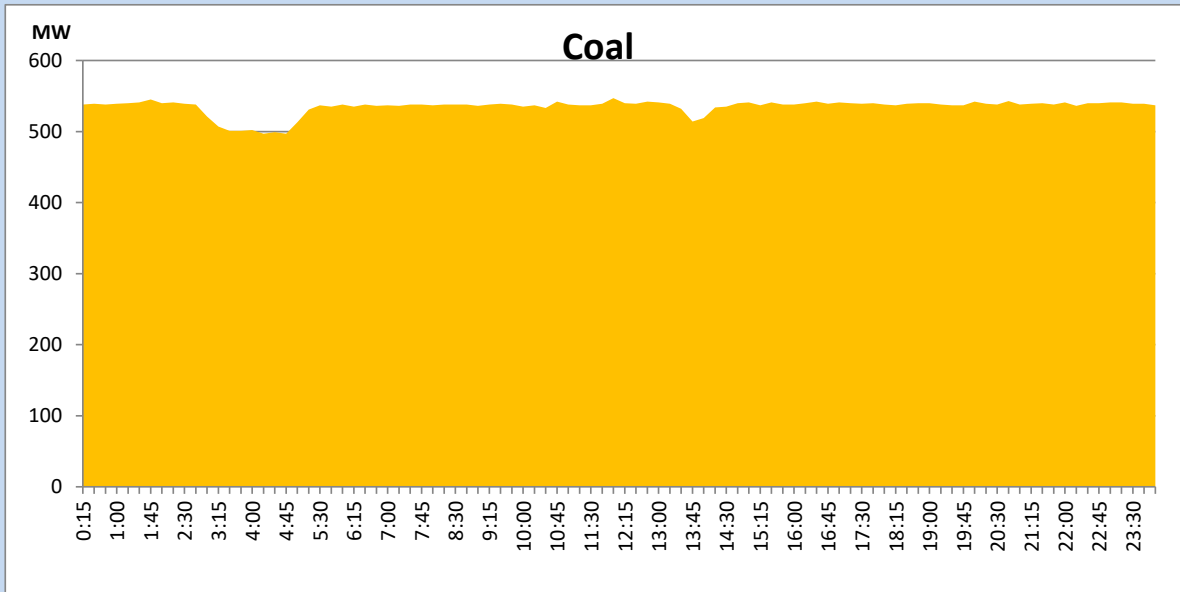
July 11, 2022

Solar and wind data is based on Telemetered Power Stations only



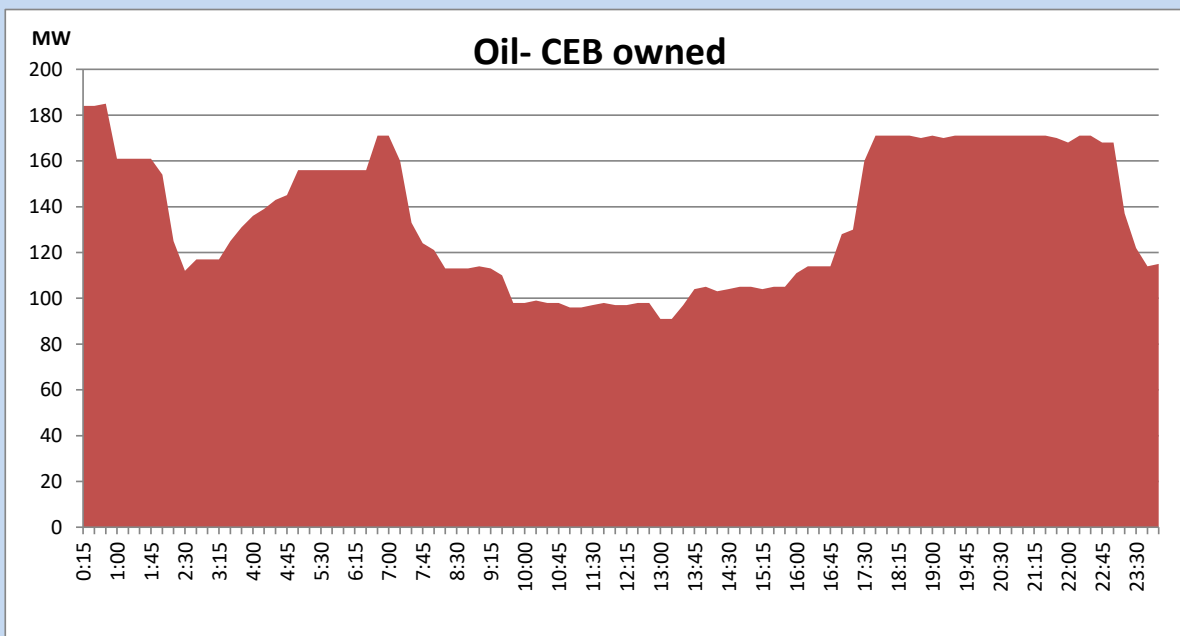
## Coal Generation during the Previous day

July 11, 2022



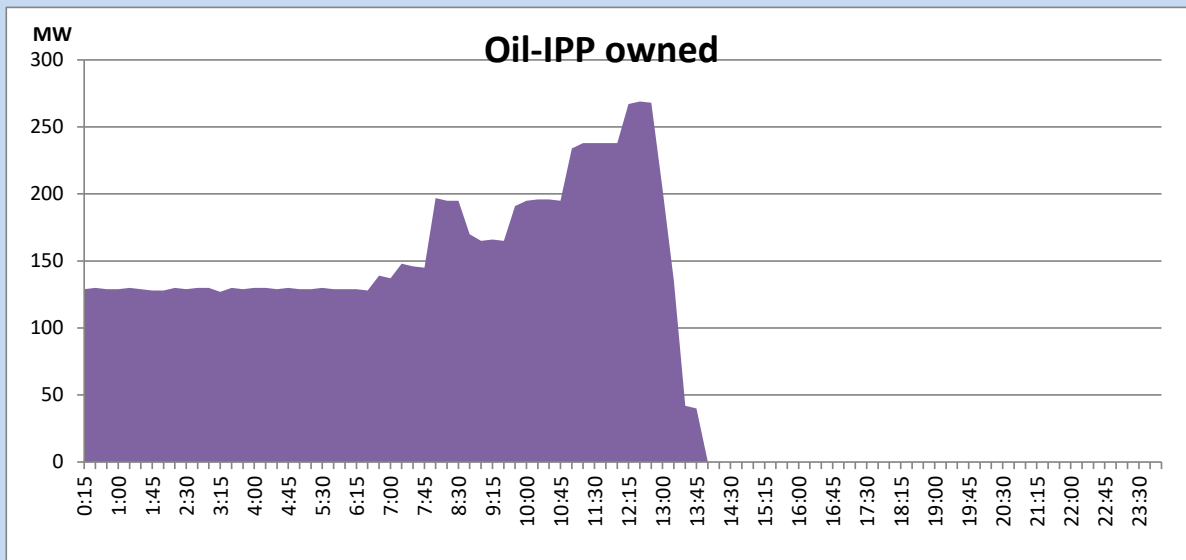
## CEB Oil Plant Generation during the Previous day

July 11, 2022



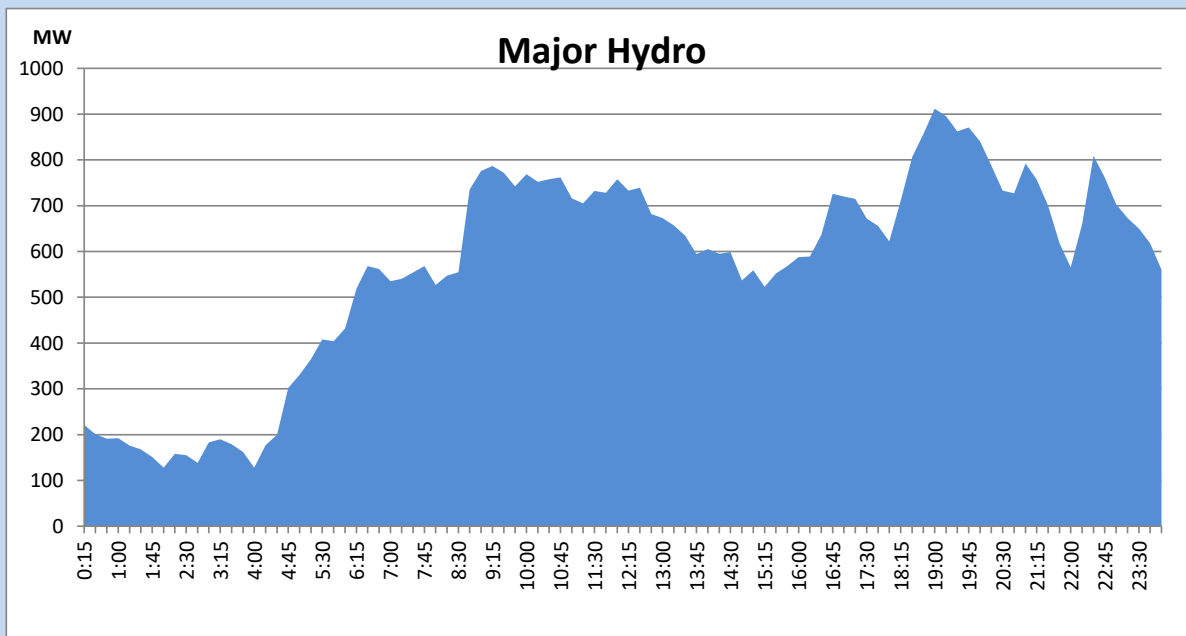
## IPP Oil Plant Generation during the Previous day

July 11, 2022



## Major Hydro Generation during the Previous day

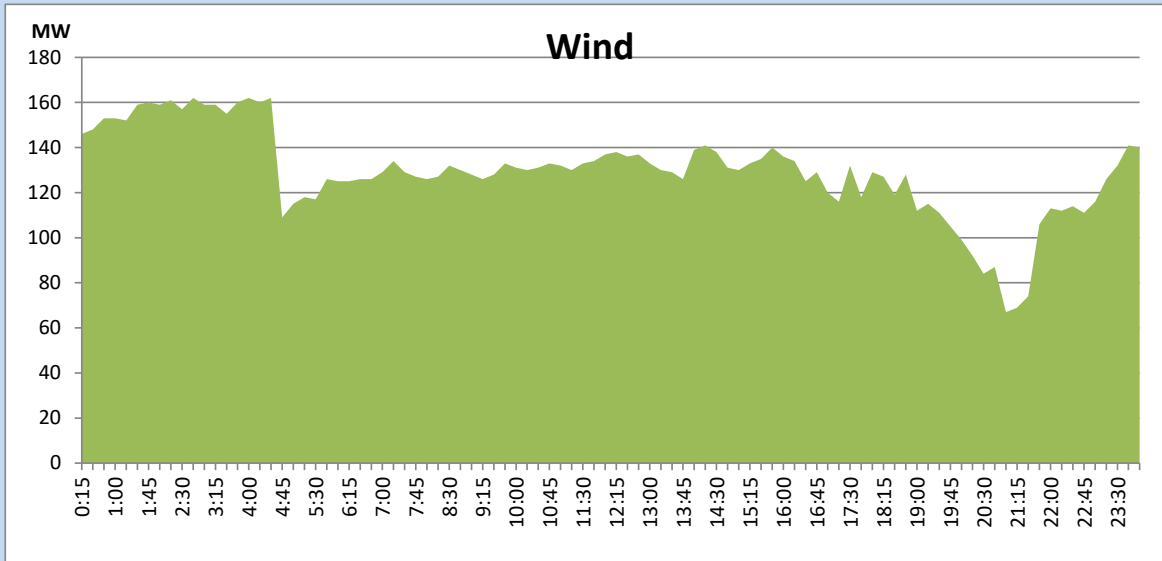
July 11, 2022



## Wind Generation during the Previous day

July 11, 2022

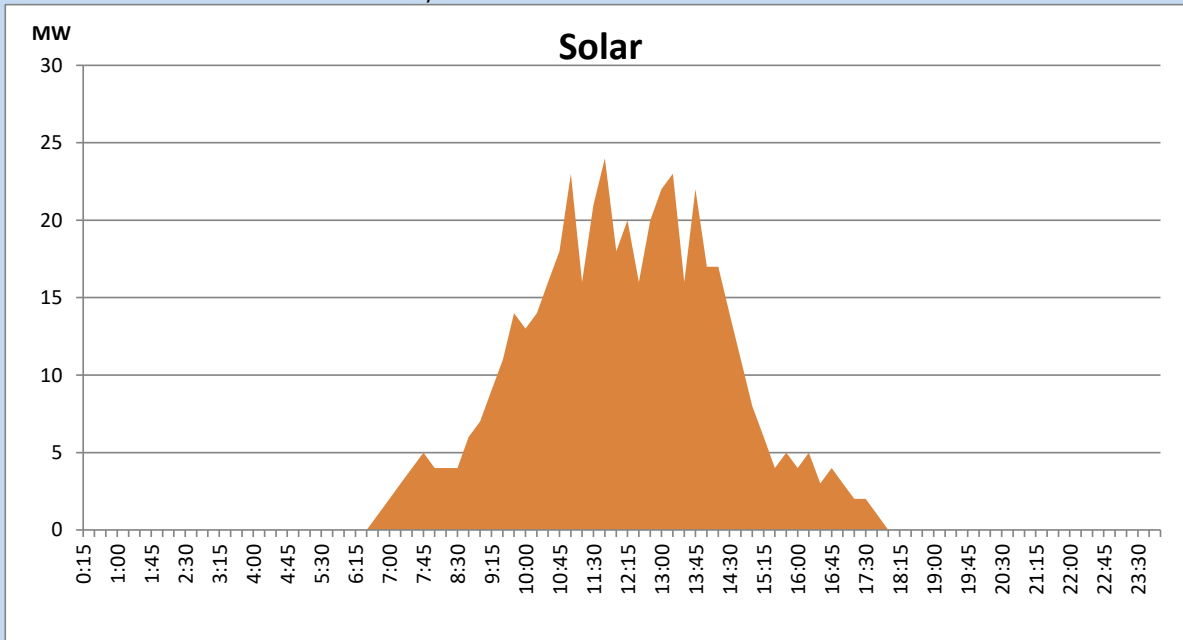
Based on Telemetered Power Stations only



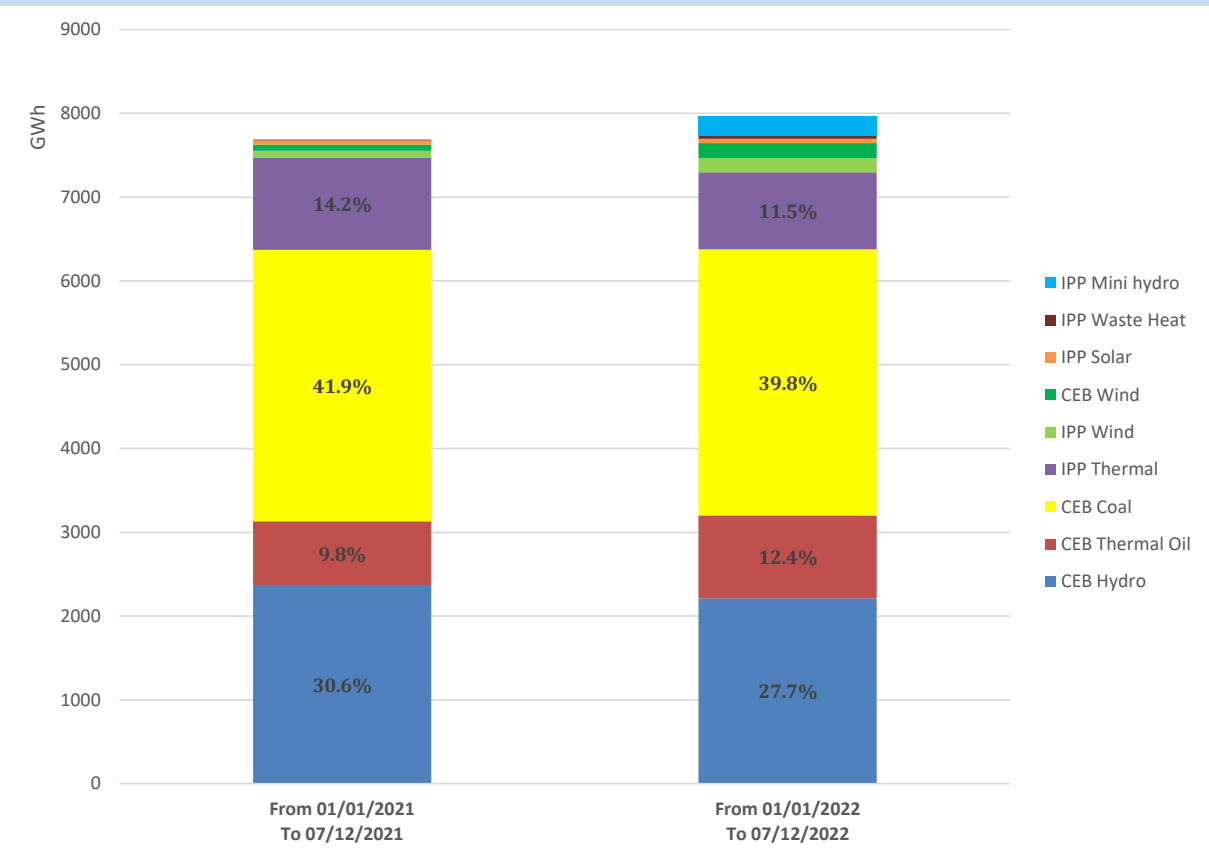
## Solar Generation during the Previous day

July 11, 2022

Based on Telemetered Power Stations only



# Cumulative Dispatch Comparison with Last Year



## Thermal Plant Fuel types

Power Station	Primary Fuel
CEB Thermal	
Sapugaskanda 1	Heavy Fuel
Sapugaskanda 2	Heavy Fuel
Kelanitissa Small Gas Turbines	Auto Diesel
GT 7 - Kelanitissa	Auto Diesel
Kelanitissa CCY	Naphtha or Diesel
Lakvijaya 1	Coal
Lakvijaya 2	Coal
Lakvijaya 3	Coal
Uthuru Janani	Heavy Fuel
Barge CEB	Heavy Fuel

Power Station	Primary Fuel
Private Thermal	
Sojitz - Kelanitissa	Auto Diesel
West Coast	Auto Diesel / Heavy Fuel
ACE Matara	Heavy Fuel
ACE Embilipitiya	Heavy Fuel

## Major Incidents during the day -as reported by CEB morning of

July 13, 2022

- 1) Rotational manual load shedding was carried out from 05:30 hrs to 08:30 hrs and 13:00 hrs to 22:00 hrs.
- 2) Hambantota 220/132kV transformer tripped at 12:28hrs due to operation of differential protection, Transformer normalized at 16:59hrs.