

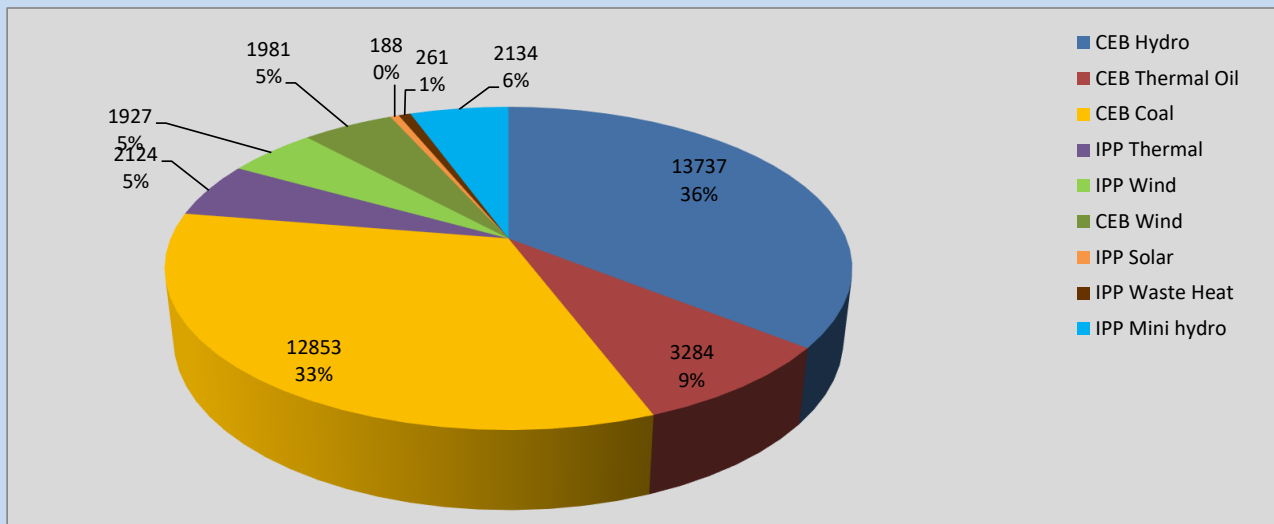
Generation and Reservoirs Statistics

July 11, 2022



PUBLIC UTILITIES COMMISSION OF SRI LANKA

Daily Generation Mix in MWh



Total Generation

38,489 MWh

Note: Above data is excluding contribution from Roof Top Solar, 1MW Solar and certain Mini Hydro plants

Cumulative Dispatch

Note: Following data is Excluding contribution from Roof Top Solar, 1MW solar and Mini Hydro plants

For Current Month

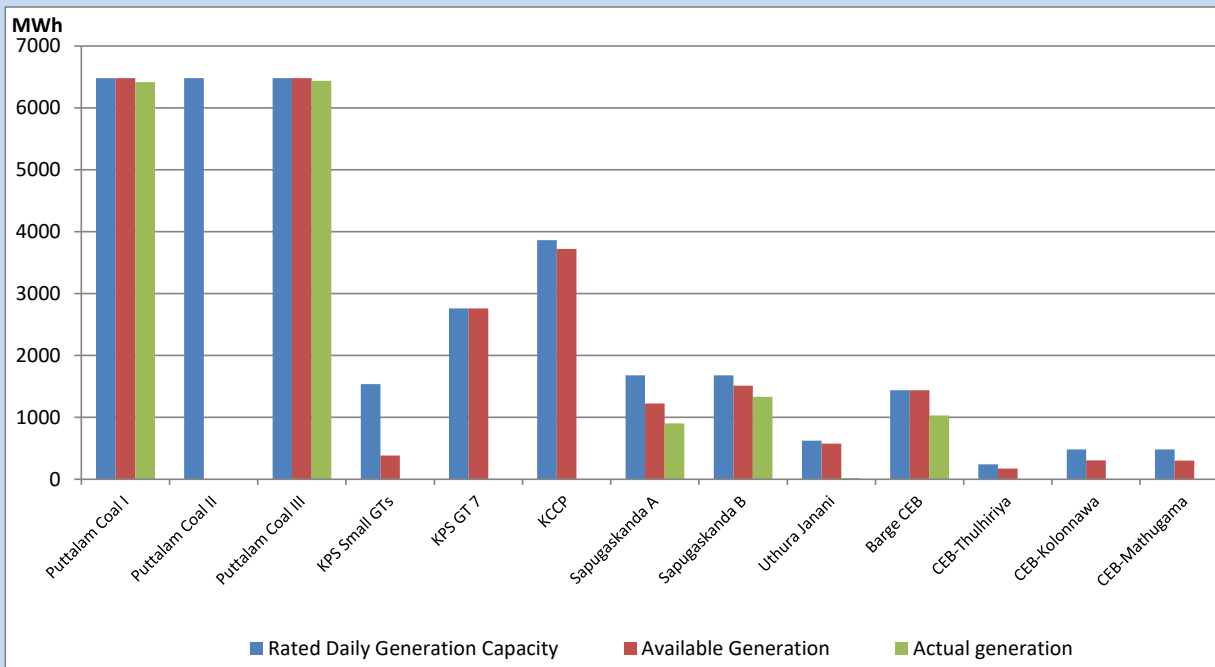
Category	Dispatch (GWh)	Percentage
CEB Hydro	146.34	34.53%
CEB Thermal Oil	45.41	10.72%
CEB Coal	133.81	31.58%
IPP Thermal	46.32	10.93%
SPP Wind	15.04	3.55%
CEB Wind	14.31	3.38%
SPP Solar	2.90	0.68%
SPP Solid Waste	2.81	0.66%
Mini Hydro	16.83	3.97%
Total	423.77	

For Current Year

Category	Dispatch (GWh)	Percentage
CEB Hydro	2,197.7	27.71%
CEB Thermal Oil	985.5	12.43%
CEB Coal	3,162.1	39.87%
IPP Thermal	917.9	11.57%
SPP Wind	165.0	2.08%
CEB Wind	180.2	2.27%
SPP Solar	49.3	0.62%
SPP Solid Waste	41.3	0.52%
Mini Hydro	232.4	2.93%
Total	7,931.1	

CEB owned Thermal Plant Dispatch

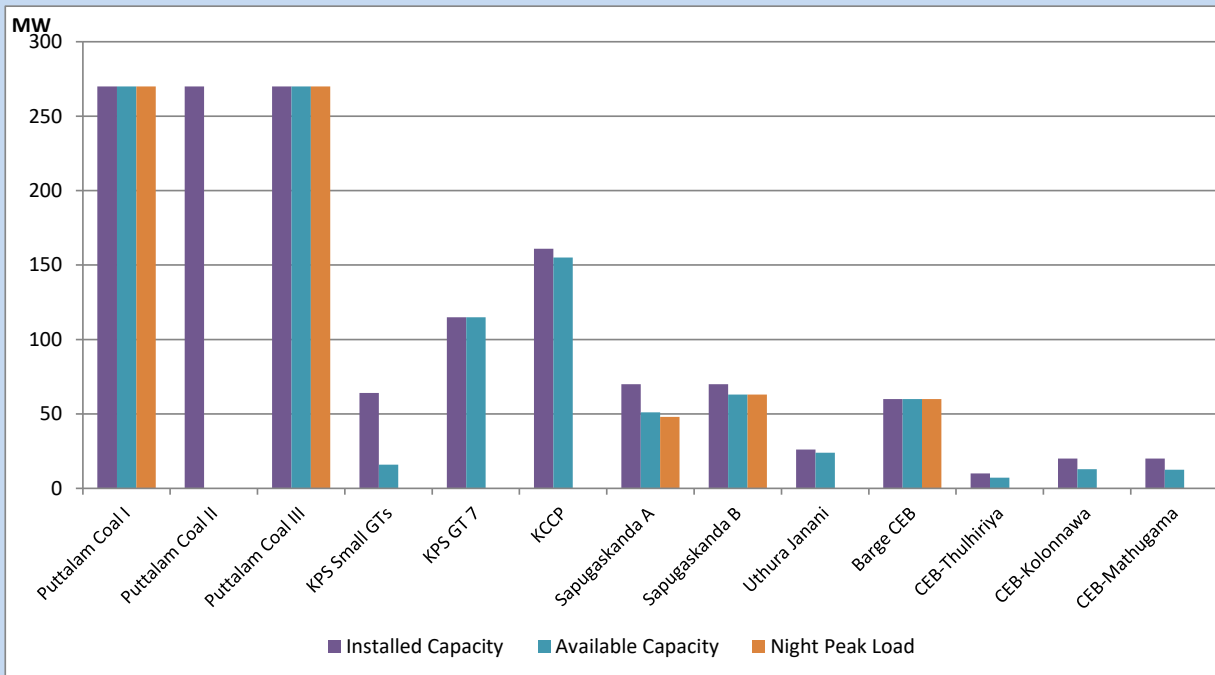
July 11, 2022



Available Generation is estimated based on plant availability at 6.00am on

July 12, 2022

CEB owned Thermal Plant Loading at the Night Peak



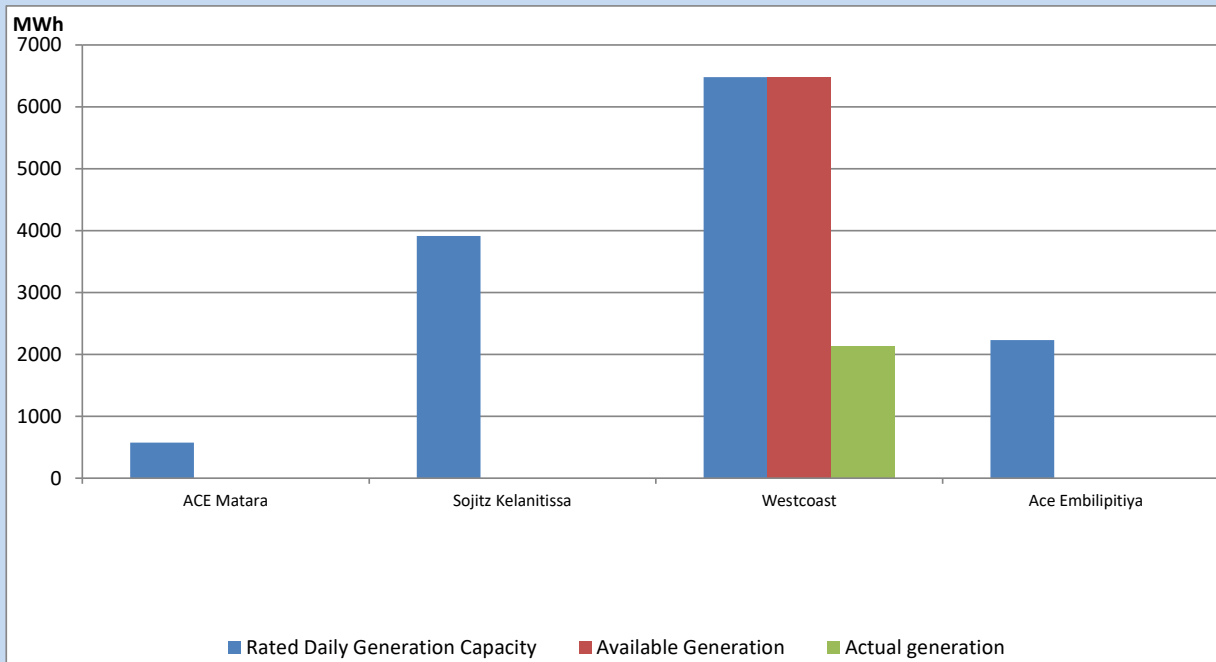
Note- Plant availability is recorded at 6.00 am on

July 12, 2022

IPP owned Thermal Plant Dispatch

July 11, 2022

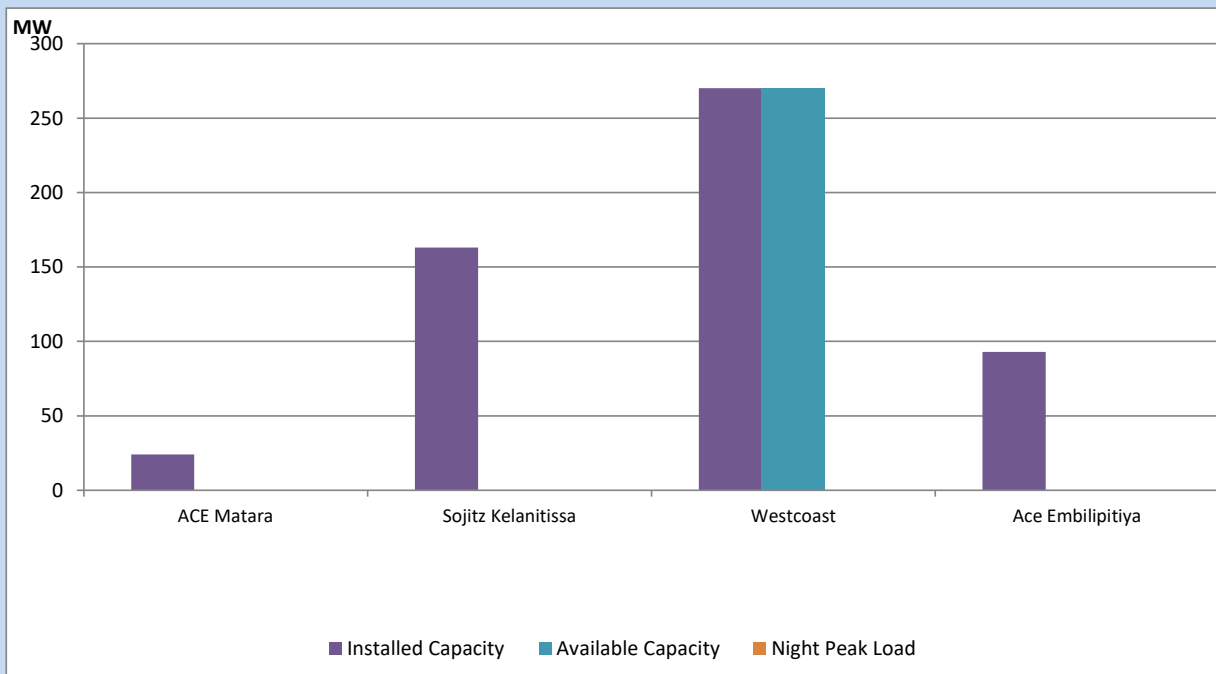
Asia Power, V Power Pallekale, Vpower Galle, V Power Horana, Vpower Hambantota, Vpower Valachchena and Altaqa Mahiyanganaya are not available due to expiration of PPAs



Available Generation is estimated based on plant availability at 6.00am on

July 12, 2022

IPP owned Thermal Plant Loading at the Night Peak

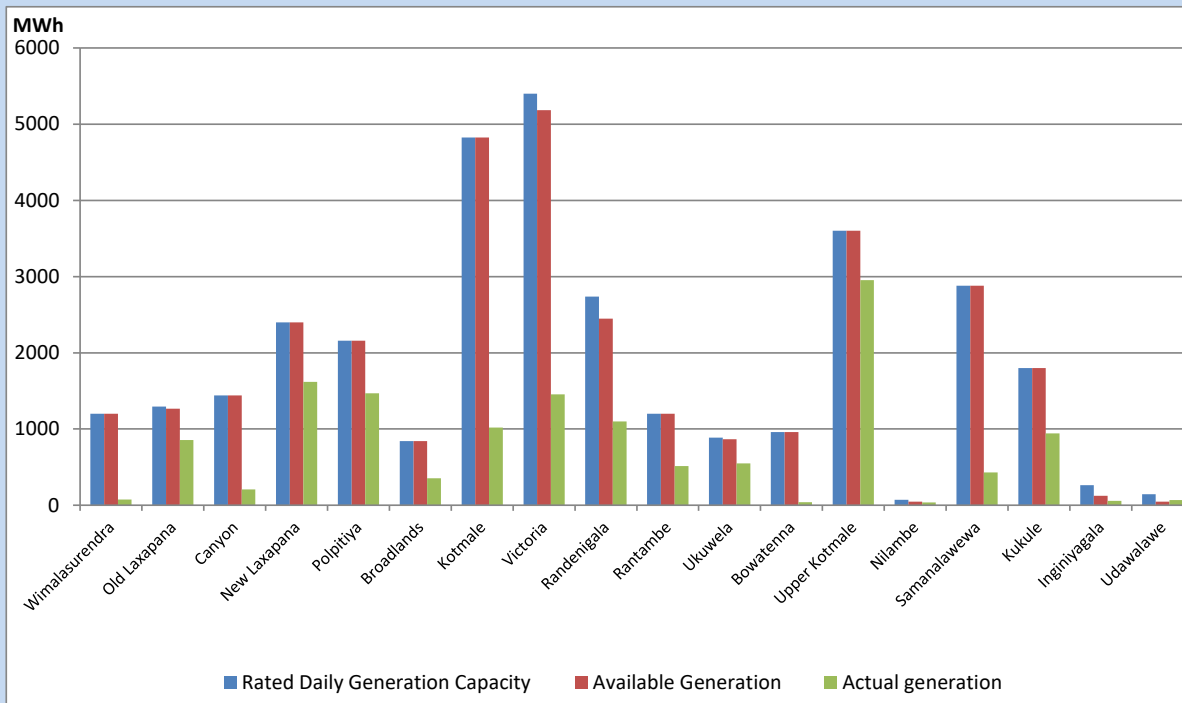


Note- Plant availability is recorded at 6.00 am on

July 12, 2022

Major Hydro Plant Dispatch

July 11, 2022

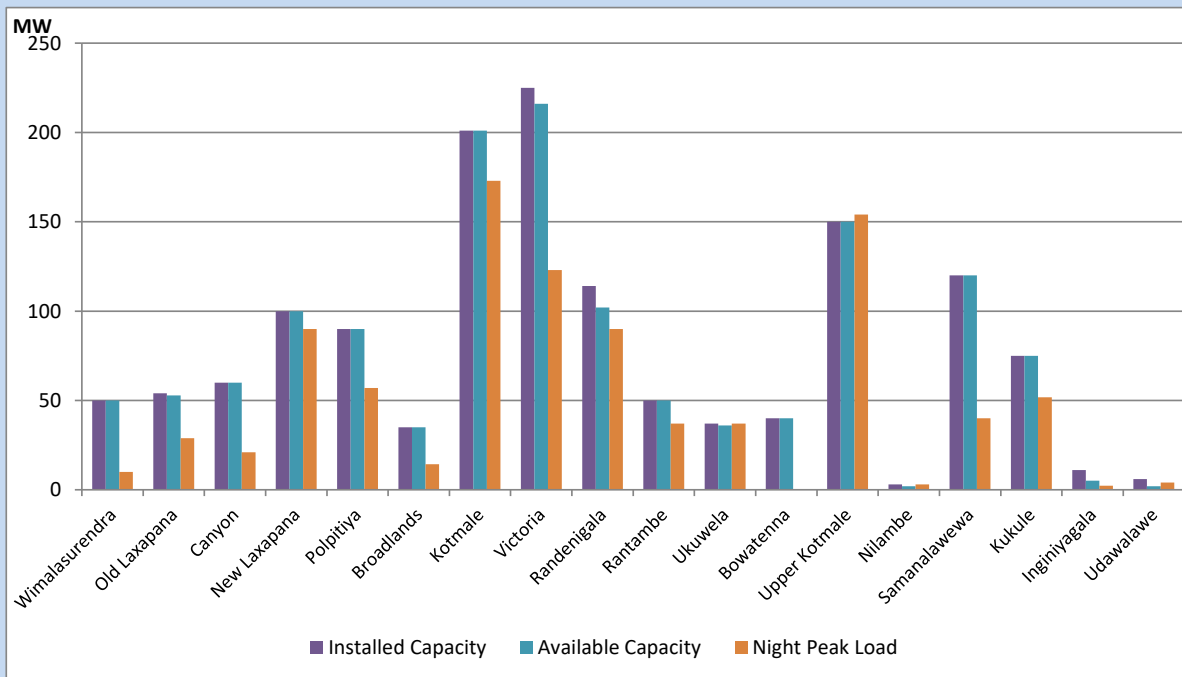


Available Generation is estimated based on plant availability at 6.00am on July 12, 2022
 Broadlands power plant is operating in the Commissioning Stage

July 12, 2022

Major Hydro Plant Loading at Night Peak

July 11, 2022



Note- Plant availability is recorded at 6.00 am on July 12, 2022
 Broadlands power plant is operating in the Commissioning Stage

Summary of Major Plant performance

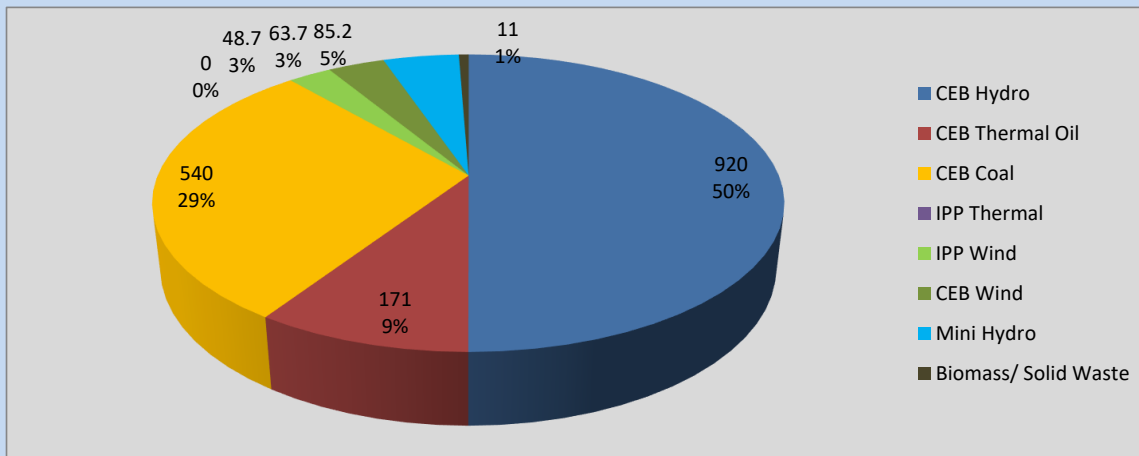
Plant	Installed Capacity	Plant Availability	Night peak Load	Plant Dispatch
	(MW)	(MW)	(MW)	(MWh)
Wimalasurendra	50	50	10	75
Old Laxapana	54	53	29	856
Canyon	60	60	21	206
New Laxapana	100	100	90	1,620
Polpitiya	90	90	57	1,469
Broadlands	35	35	14	353
Kotmale	201	201	173	1,020
Victoria	225	216	123	1,455
Randenigala	114	102	90	1,099
Rantambe	50	50	37	512
Ukuwela	37	36	37	548
Bowatenna	40	40	0	39
Upper Kotmale	150	150	154	2,952
Nilambe	3	2	3	35
Samanalawewa	120	120	40	431
Kukule	75	75	52	944
Inginiyagala	11	5	2	56
Udawalawe	6	2	4	67
Puttalam Coal I	270	270	270	6,416
Puttalam Coal II	270	0	0	0
Puttalam Coal III	270	270	270	6,437
KPS Small GTs	64	16	0	0
KPS GT 7	115	115	0	0
KCCP	161	155	0	0
Sapugaskanda A	70	51	48	901
Sapugaskanda B	70	63	63	1,333
Uthura Janani	26	24	0	20
Barge CEB	60	60	60	1,030
CEB-Thulhiriya	10	7	0	0
CEB-Kolonnawa	20	13	0	0
CEB-Mathugama	20	13	0	0
ACE Matara	24	0	0	0
Sojitz Kelanitissa	163	0	0	0
West Coast	270	270	0	2,124
ACE Embilipitiya	93	0	0	0
Total	3,397	2,714	1,856	38,489

Plant availability is the availability recorded at 6 am on

July 12, 2022

Contribution to the Night Peak in MW

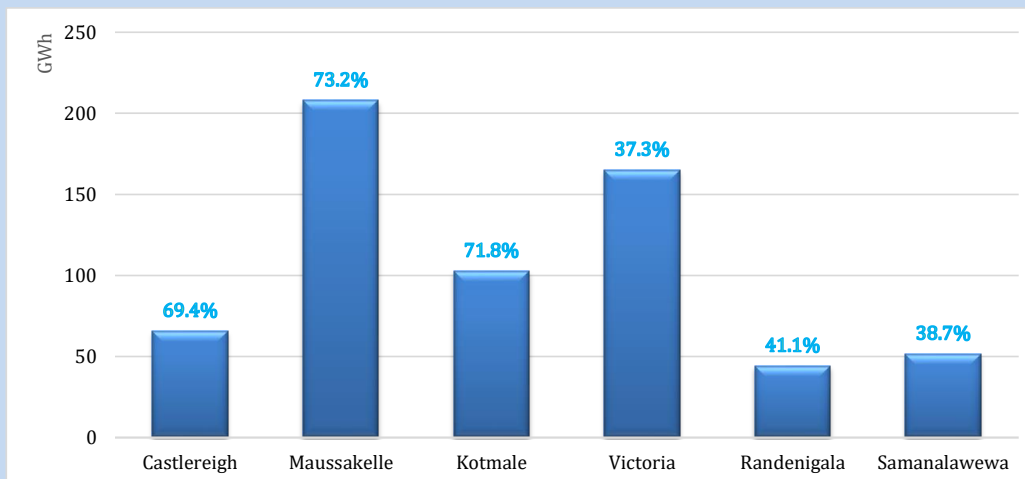
July 11, 2022



Night Peak*	1,839.8 MW
Day Peak	1,932.2 MW
Minimum Demand	1,169.7 MW

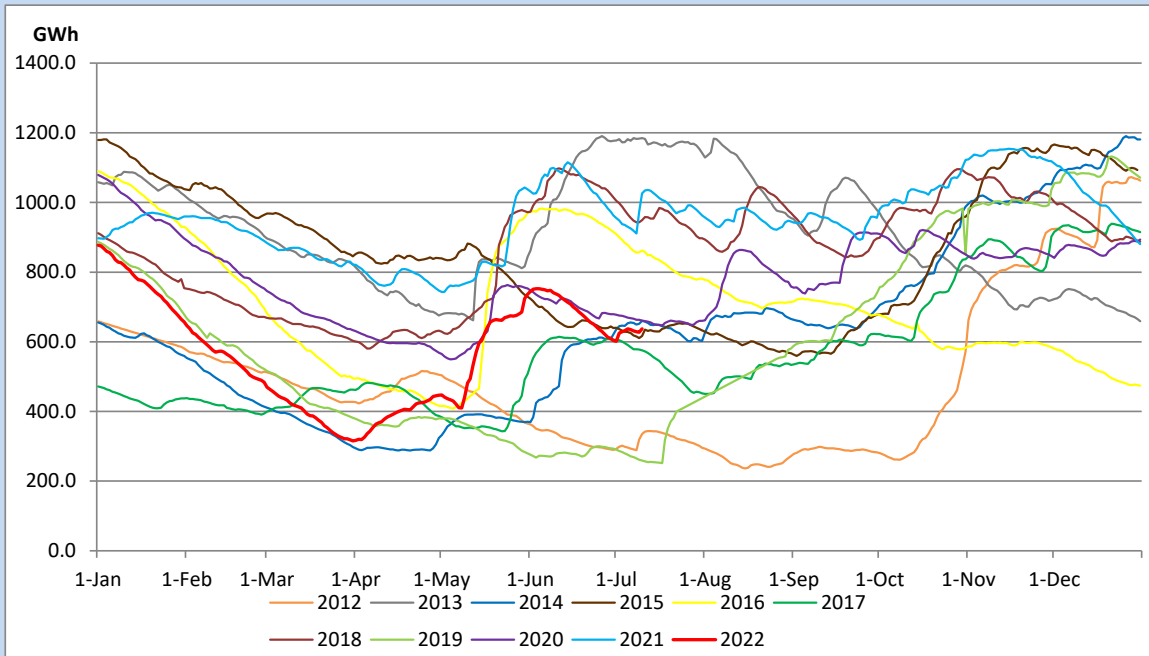
Above figures are excluding contribution from Roof Top Solar, 1MW solar, certain Wind plants and Mini Hydro plants

Reservoir Levels - as at 06.00 Hr on July 12, 2022

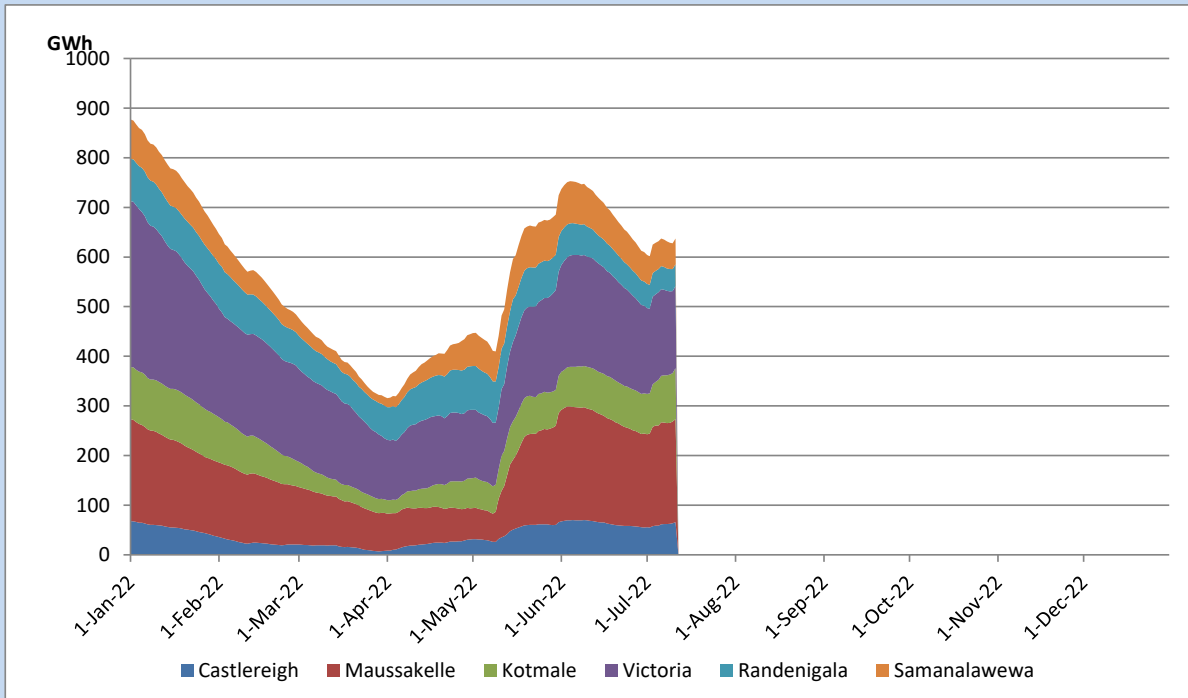


Total Reservoir Level	637.2 GWh
% of Total capacity	52.9%

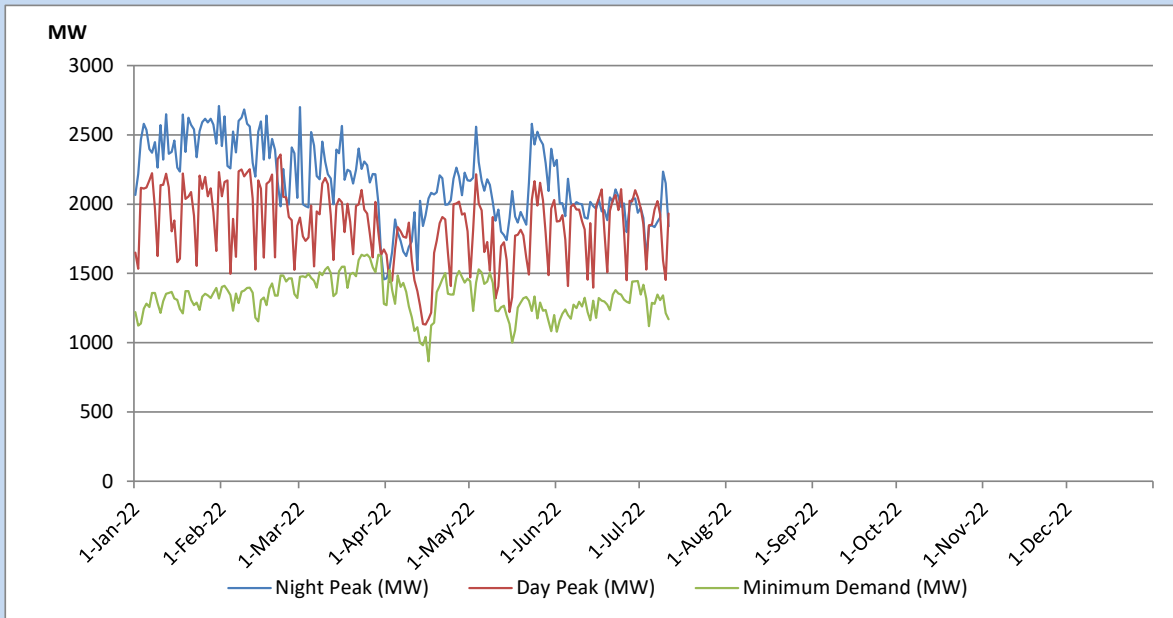
Comparison of Total Reservoir Storage Levels with Past Years



Variation of Major Hydro Reservoir Levels in the current year (GWh)



Variation of Demand during the current year

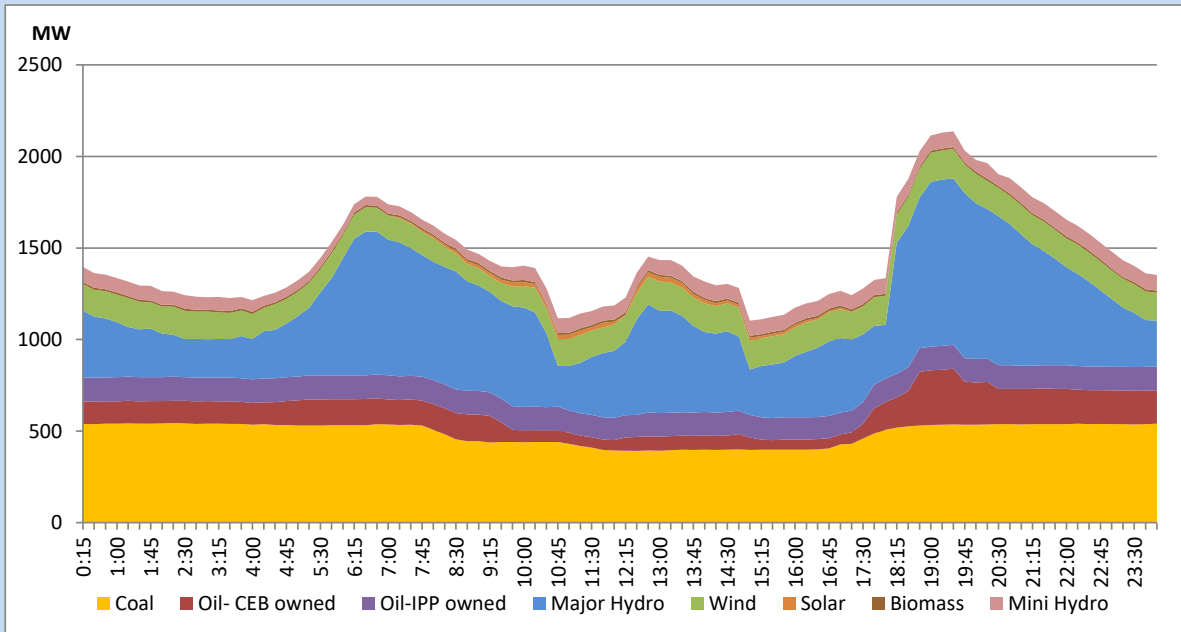


The above figures are excluding contribution from Roof Top Solar, 1MW solar, certain Wind plants and Mini Hydro plants

Daily Load Curve of the Previous day

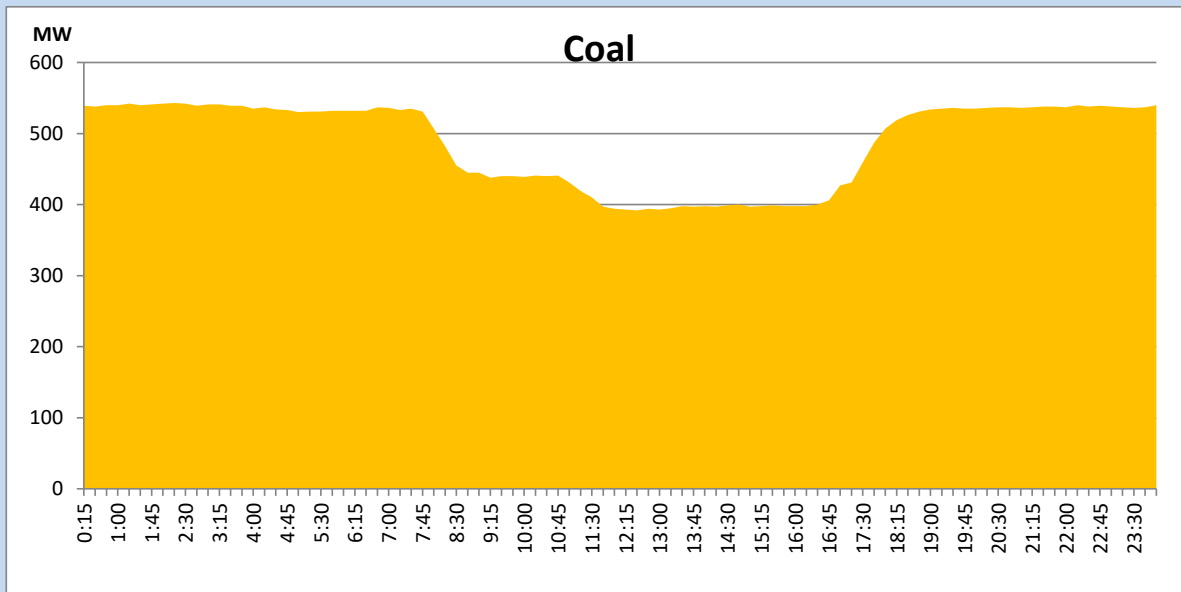
July 10, 2022

Solar and wind data is based on Telemetered Power Stations only



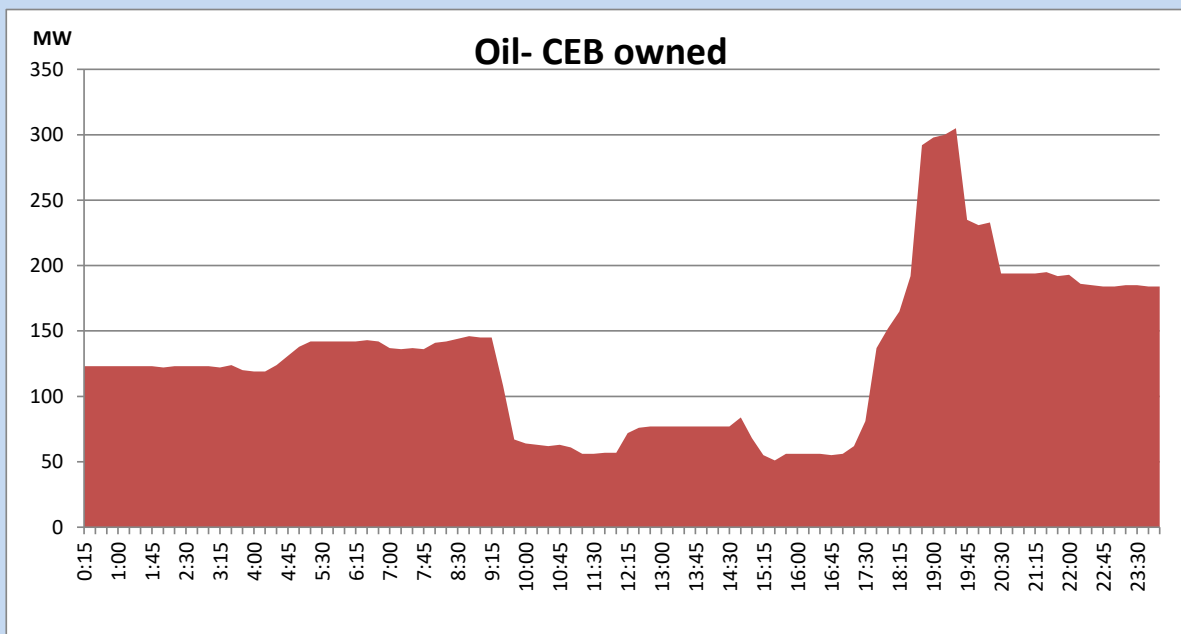
Coal Generation during the Previous day

July 10, 2022



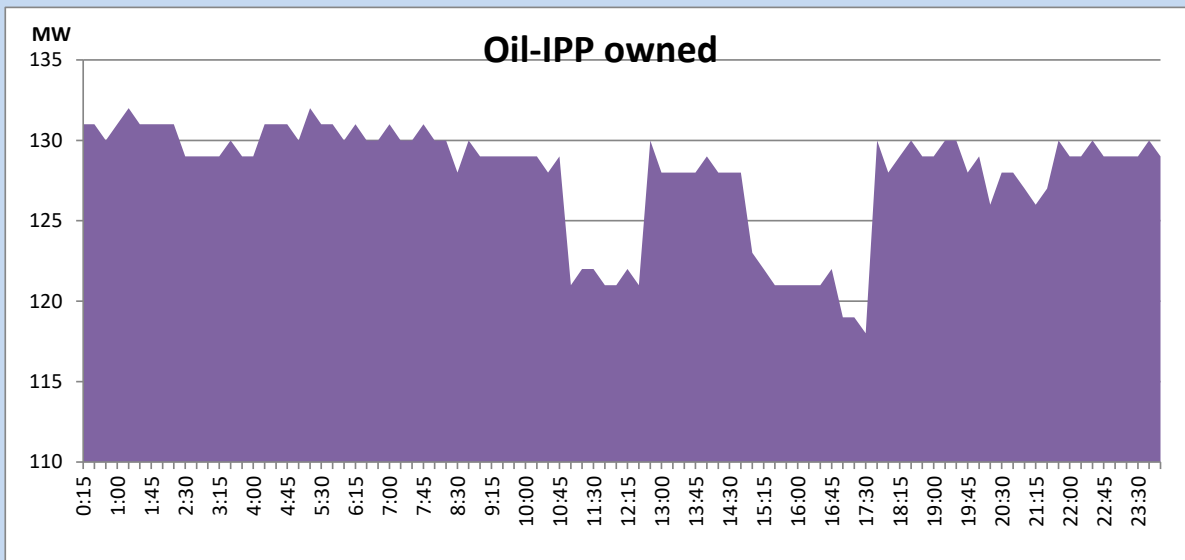
CEB Oil Plant Generation during the Previous day

July 10, 2022



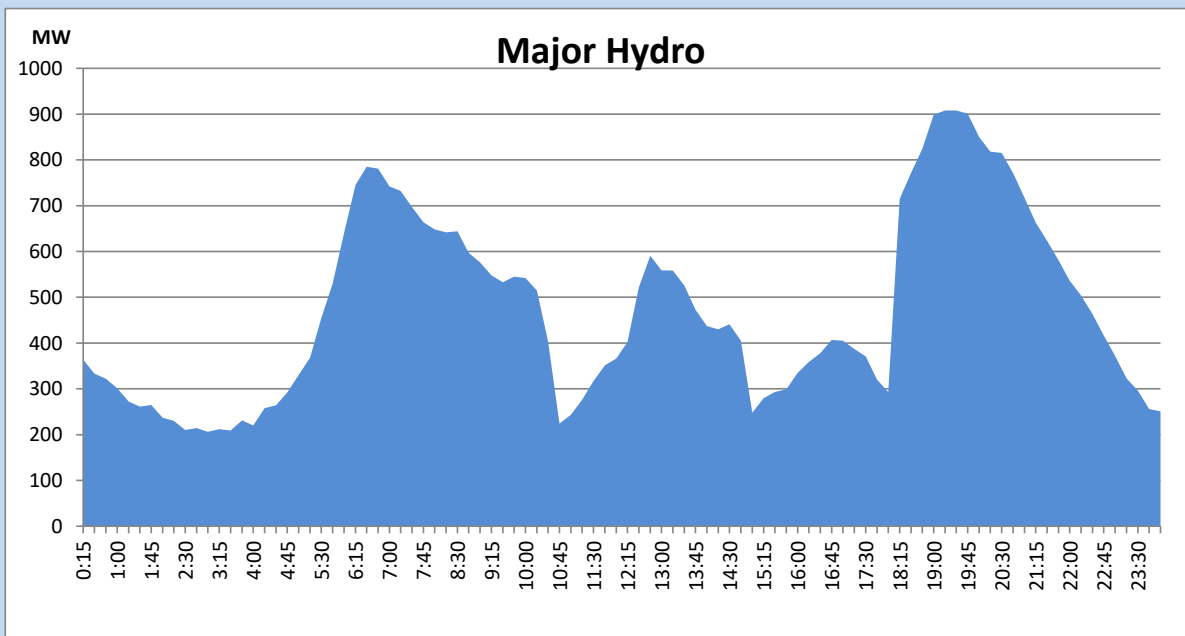
IPP Oil Plant Generation during the Previous day

July 10, 2022



Major Hydro Generation during the Previous day

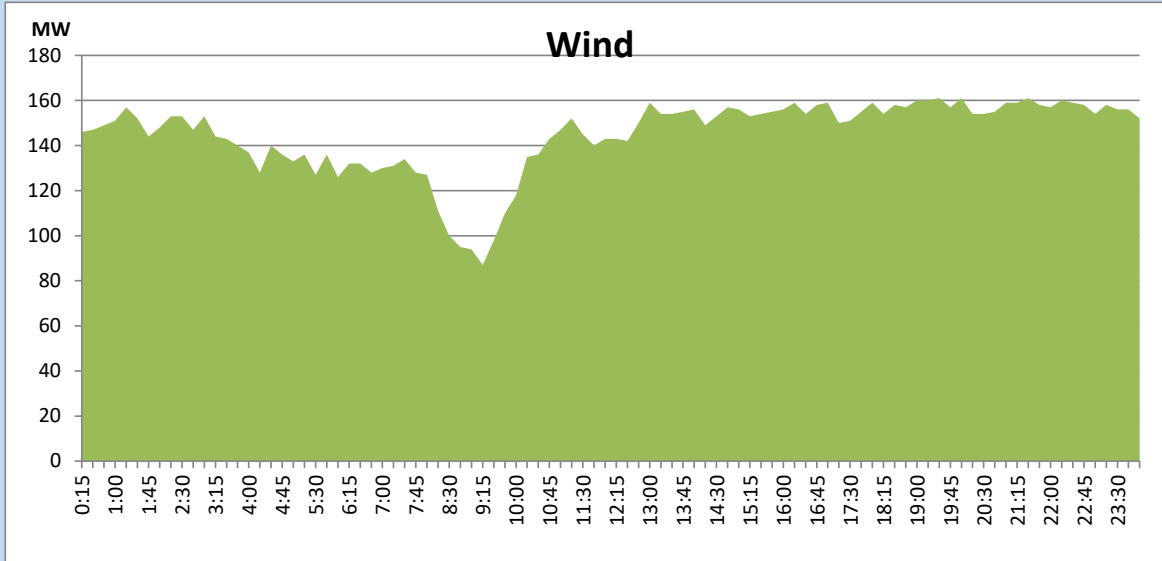
July 10, 2022



Wind Generation during the Previous day

July 10, 2022

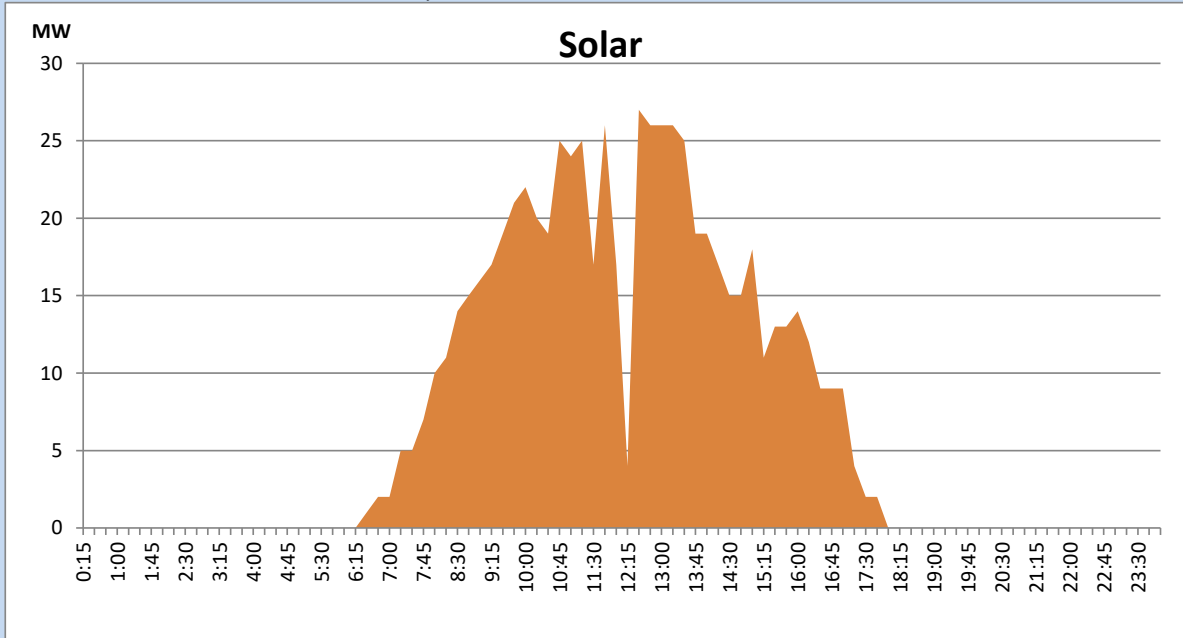
Based on Telemetered Power Stations only



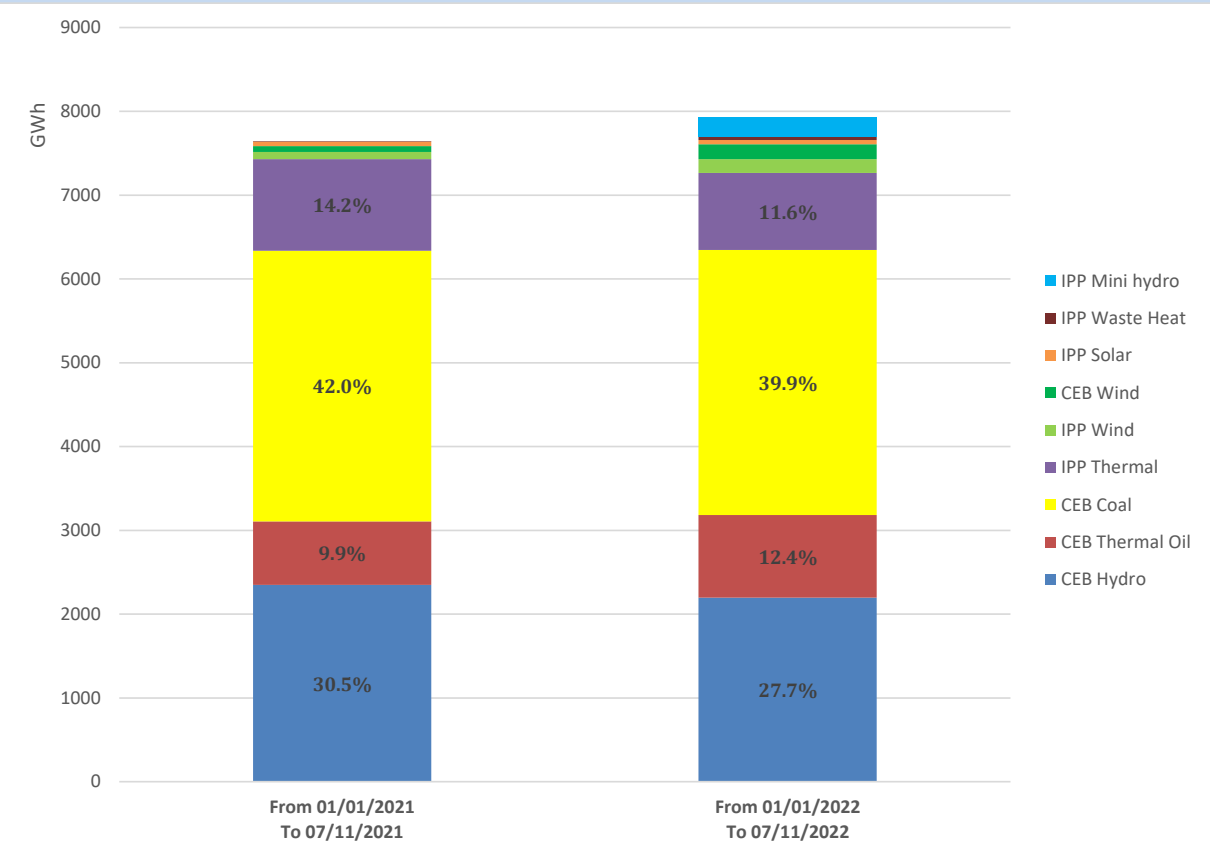
Solar Generation during the Previous day

July 10, 2022

Based on Telemetered Power Stations only



Cumulative Dispatch Comparison with Last Year



Thermal Plant Fuel types

Power Station	Primary Fuel
CEB Thermal	
Sapugaskanda 1	Heavy Fuel
Sapugaskanda 2	Heavy Fuel
Kelanitissa Small Gas Turbines	Auto Diesel
GT 7 - Kelanitissa	Auto Diesel
Kelanitissa CCY	Naphtha or Diesel
Lakvijaya 1	Coal
Lakvijaya 2	Coal
Lakvijaya 3	Coal
Uthuru Janani	Heavy Fuel
Barge CEB	Heavy Fuel

Power Station	Primary Fuel
Private Thermal	
Sojitz - Kelanitissa	Auto Diesel
West Coast	Auto Diesel / Heavy Fuel
ACE Matara	Heavy Fuel
ACE Embilipitiya	Heavy Fuel

Major Incidents during the day -as reported by CEB morning of

July 12, 2022

- 1) Rotational manual load shedding was carried out from 05:30 hrs to 08:30 hrs and 13:00 hrs to 22:00 hrs.
- 2) Upper Kotmale pond spilling started at 10:35 hrs and stopped at 19:48 hrs.