

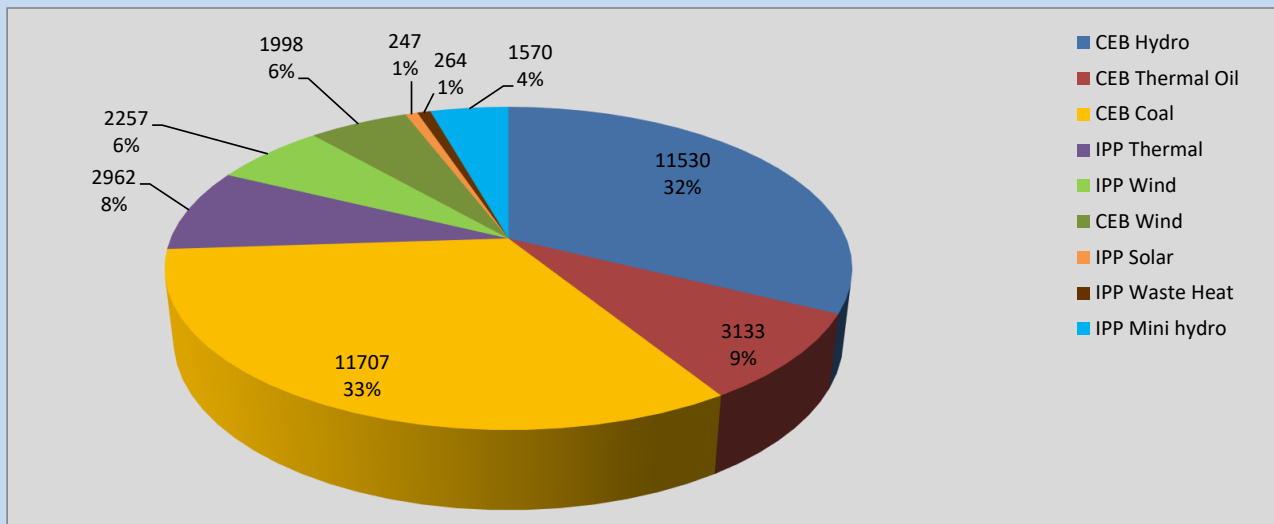
Generation and Reservoirs Statistics

July 10, 2022



PUBLIC UTILITIES COMMISSION OF SRI LANKA

Daily Generation Mix in MWh



Total Generation **35,668 MWh**

Note: Above data is excluding contribution from Roof Top Solar, 1MW Solar and certain Mini Hydro plants

Cumulative Dispatch

Note: Following data is Excluding contribution from Roof Top Solar, 1MW solar and Mini Hydro plants

For Current Month

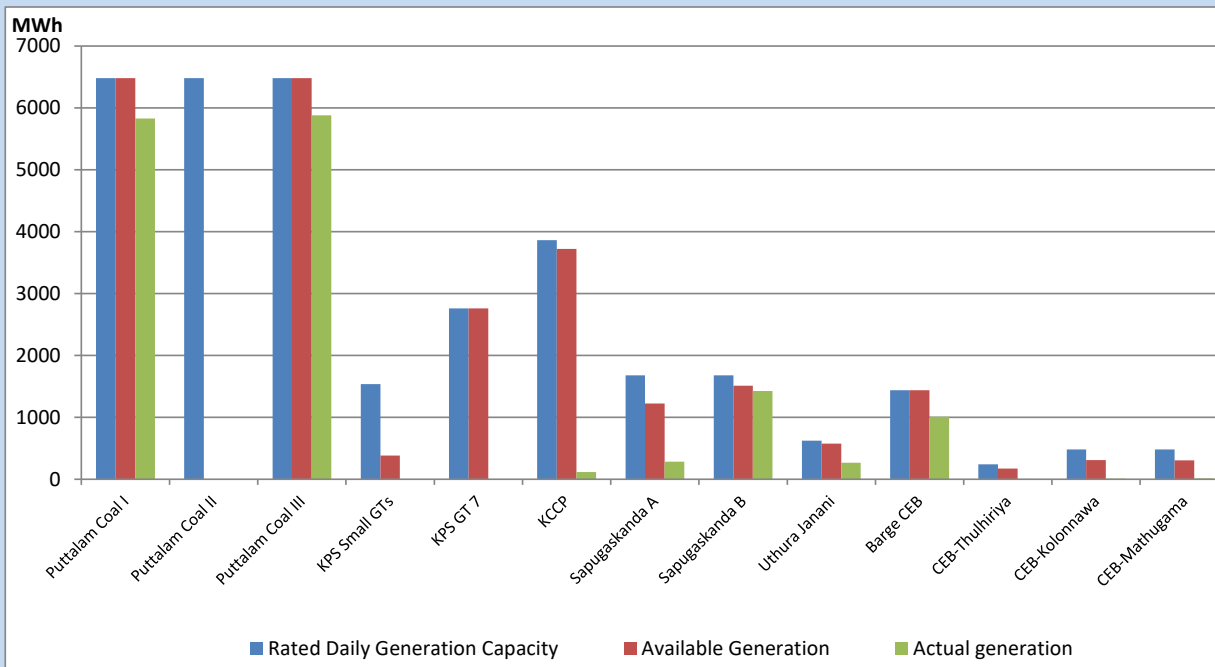
Category	Dispatch (GWh)	Percentage
CEB Hydro	132.60	34.42%
CEB Thermal Oil	42.13	10.93%
CEB Coal	120.96	31.40%
IPP Thermal	44.20	11.47%
SPP Wind	13.11	3.40%
CEB Wind	12.33	3.20%
SPP Solar	2.71	0.70%
SPP Solid Waste	2.55	0.66%
Mini Hydro	14.69	3.81%
Total	385.28	

For Current Year

Category	Dispatch (GWh)	Percentage
CEB Hydro	2,183.9	27.67%
CEB Thermal Oil	982.2	12.45%
CEB Coal	3,149.2	39.90%
IPP Thermal	915.8	11.60%
SPP Wind	163.0	2.07%
CEB Wind	178.2	2.26%
SPP Solar	49.2	0.62%
SPP Solid Waste	41.0	0.52%
Mini Hydro	230.3	2.92%
Total	7,892.6	

CEB owned Thermal Plant Dispatch

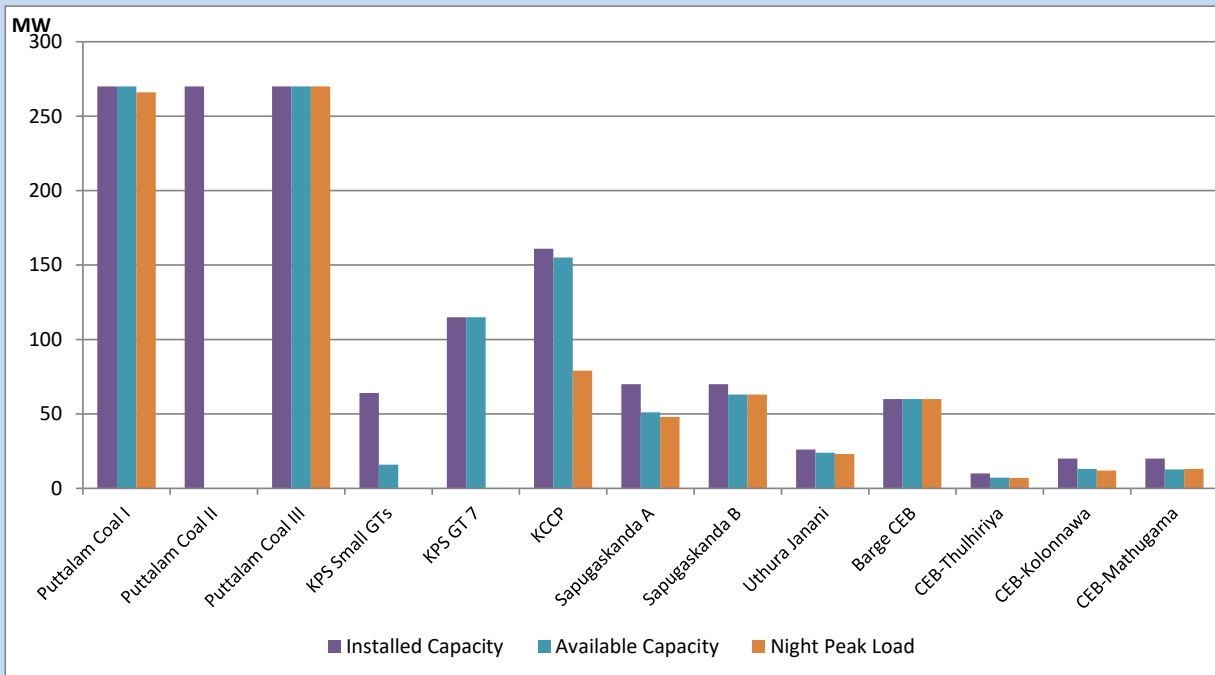
July 10, 2022



Available Generation is estimated based on plant availability at 6.00am on

July 11, 2022

CEB owned Thermal Plant Loading at the Night Peak



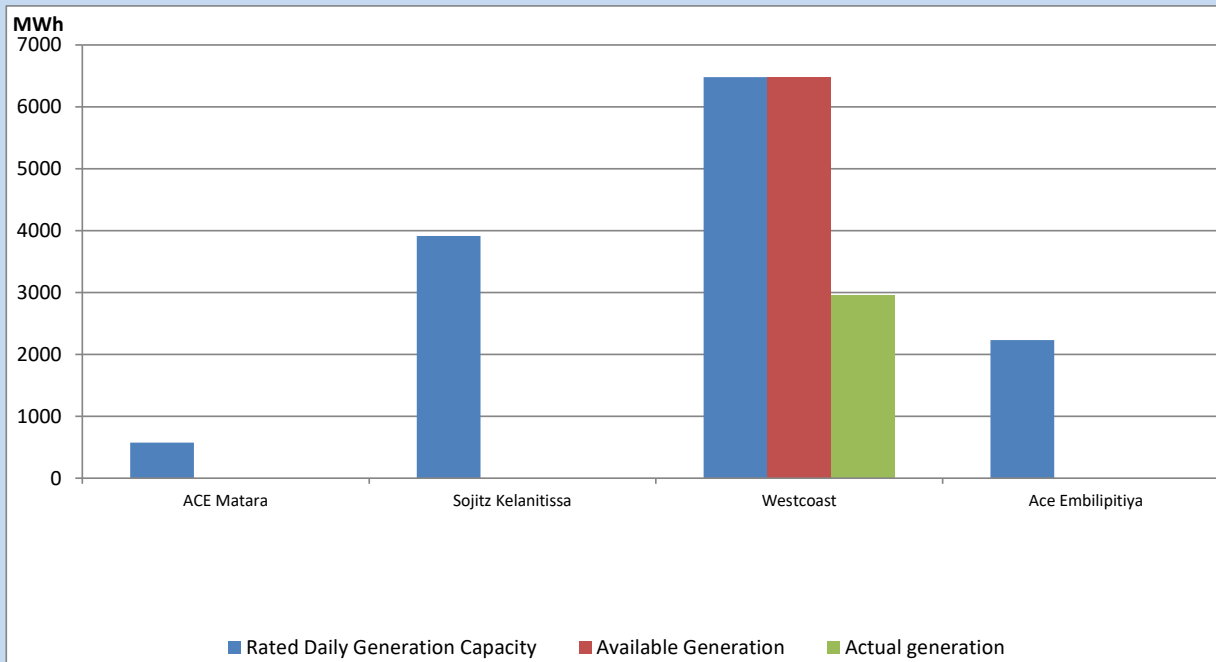
Note- Plant availability is recorded at 6.00 am on

July 11, 2022

IPP owned Thermal Plant Dispatch

July 10, 2022

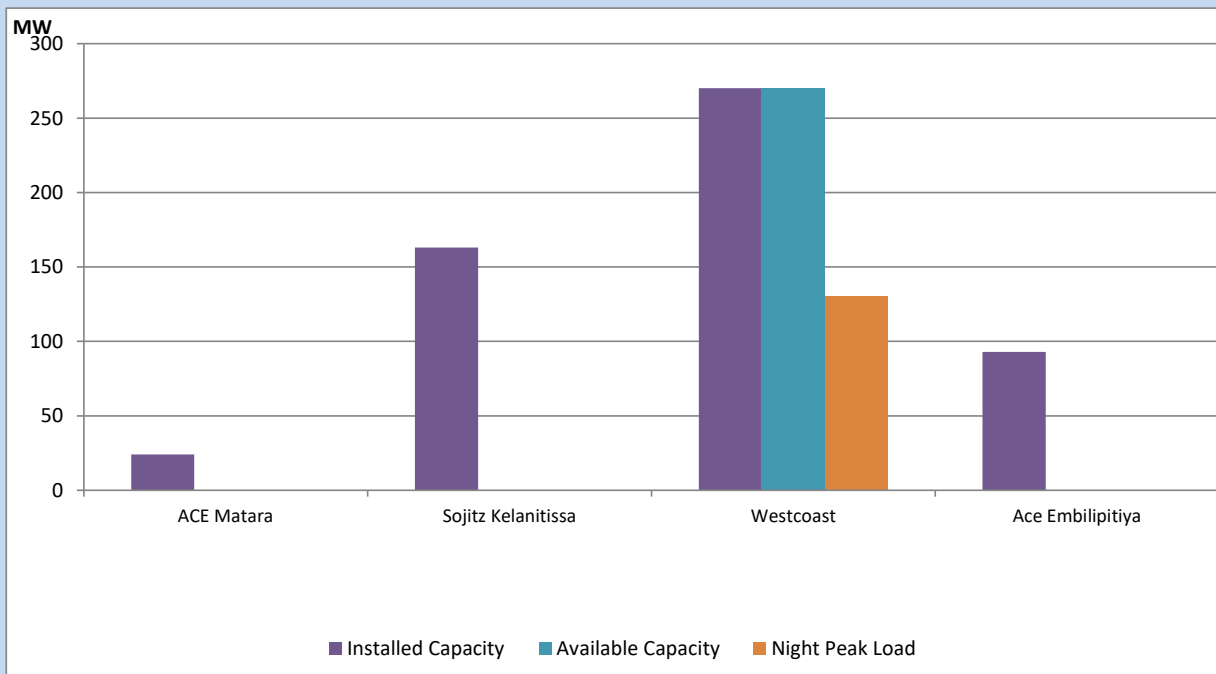
Asia Power, V Power Pallekale, Vpower Galle, V Power Horana, Vpower Hambantota, Vpower Valachchena and Altaqa Mahiyanganaya are not available due to expiration of PPAs



Available Generation is estimated based on plant availability at 6.00am on

July 11, 2022

IPP owned Thermal Plant Loading at the Night Peak

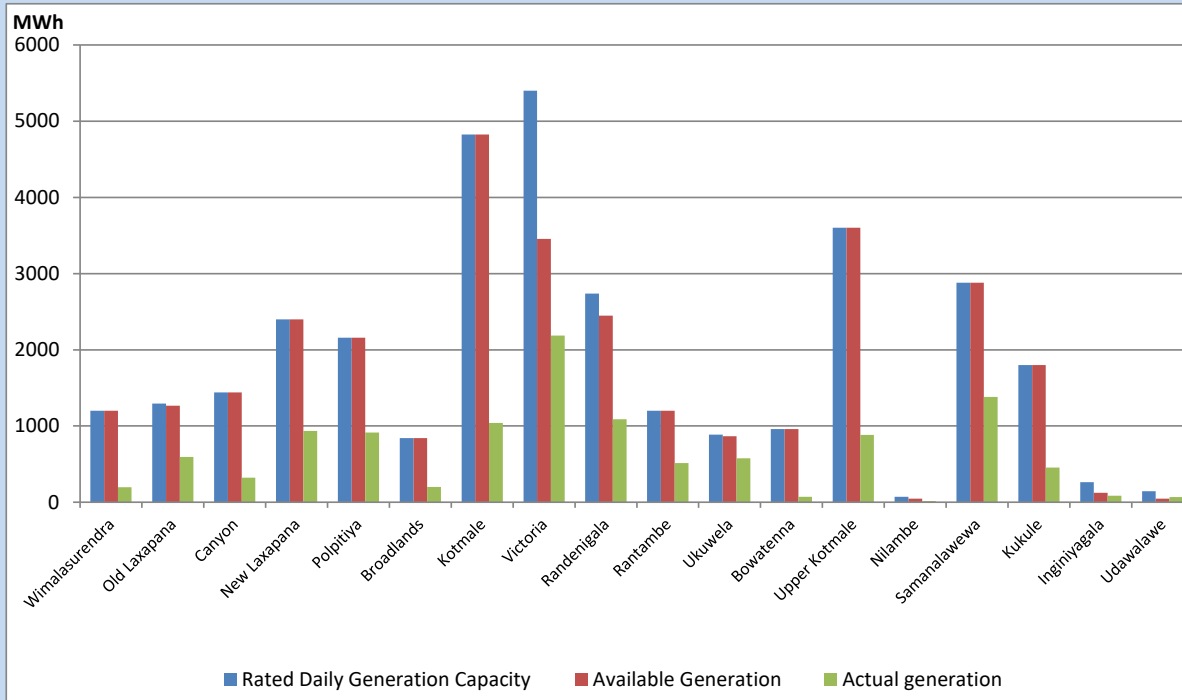


Note- Plant availability is recorded at 6.00 am on

July 11, 2022

Major Hydro Plant Dispatch

July 10, 2022

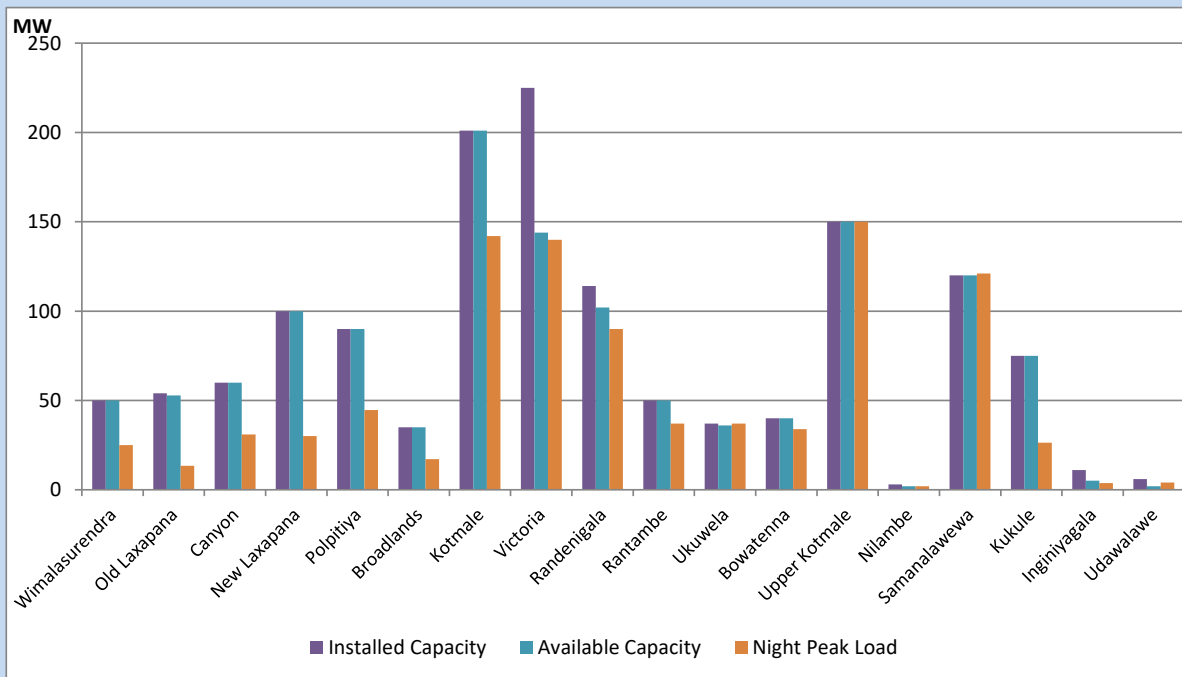


Available Generation is estimated based on plant availability at 6.00am on
Broadlands power plant is operating in the Commissioning Stage

July 11, 2022

Major Hydro Plant Loading at Night Peak

July 10, 2022



Note- Plant availability is recorded at 6.00 am on
Broadlands power plant is operating in the Commissioning Stage

July 11, 2022

Summary of Major Plant performance

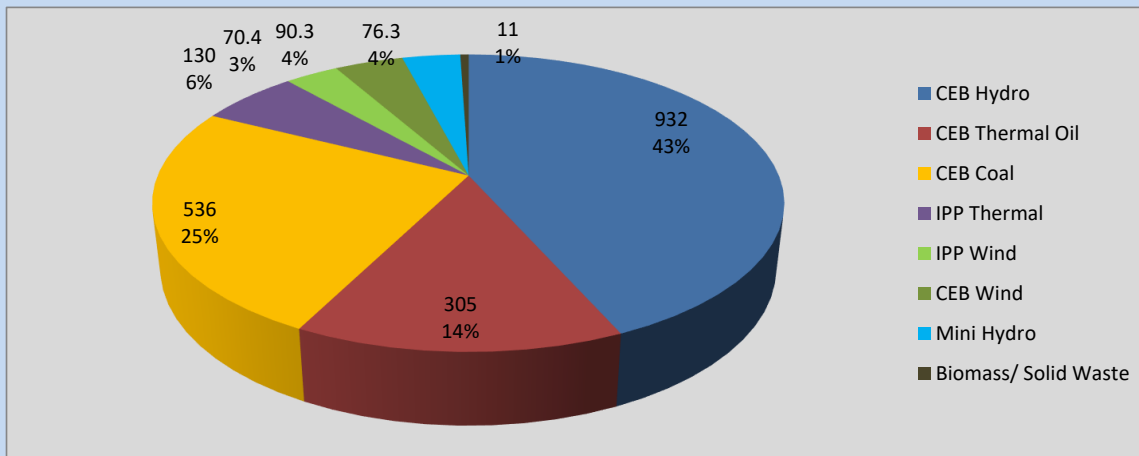
Plant	Installed Capacity	Plant Availability	Night peak Load	Plant Dispatch
	(MW)	(MW)	(MW)	(MWh)
Wimalasurendra	50	50	25	196
Old Laxapana	54	53	13	593
Canyon	60	60	31	323
New Laxapana	100	100	30	937
Polpitiya	90	90	45	916
Broadlands	35	35	17	201
Kotmale	201	201	142	1,040
Victoria	225	144	140	2,185
Randenigala	114	102	90	1,090
Rantambe	50	50	37	512
Ukuwela	37	36	37	576
Bowatenna	40	40	34	70
Upper Kotmale	150	150	150	882
Nilambe	3	2	2	15
Samanalawewa	120	120	121	1,383
Kukule	75	75	26	456
Inginiyagala	11	5	4	86
Udawalawe	6	2	4	69
Puttalam Coal I	270	270	266	5,827
Puttalam Coal II	270	0	0	0
Puttalam Coal III	270	270	270	5,880
KPS Small GTs	64	16	0	0
KPS GT 7	115	115	0	0
KCCP	161	155	79	118
Sapugaskanda A	70	51	48	284
Sapugaskanda B	70	63	63	1,426
Uthura Janani	26	24	23	266
Barge CEB	60	60	60	1,009
CEB-Thulhiriya	10	7	7	7
CEB-Kolonnawa	20	13	12	11
CEB-Mathugama	20	13	13	12
ACE Matara	24	0	0	0
Sojitz Kelanitissa	163	0	0	0
West Coast	270	270	130	2,962
ACE Embilipitiya	93	0	0	0
Total	3,397	2,642	2,167	35,668

Plant availability is the availability recorded at 6 am on

July 11, 2022

Contribution to the Night Peak in MW

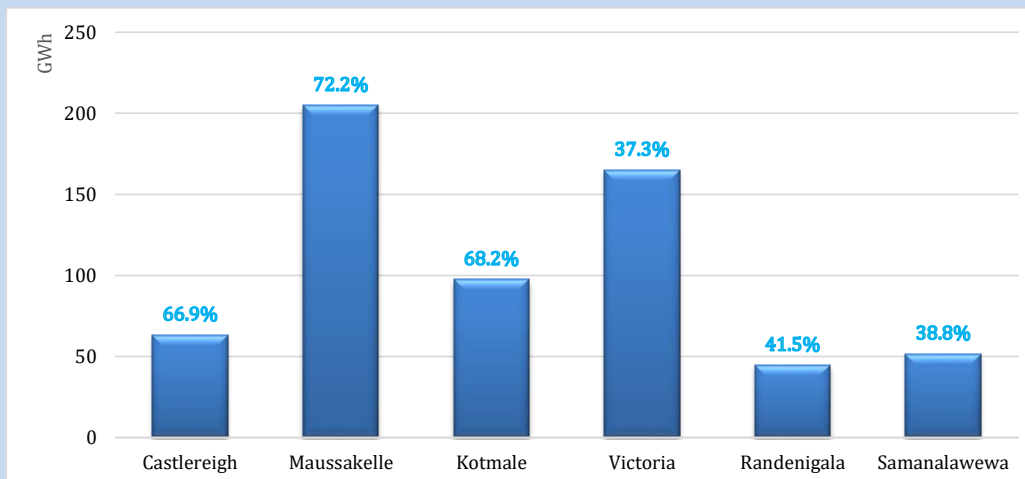
July 10, 2022



Night Peak*	2,151.3 MW
Day Peak	1,451.8 MW
Minimum Demand	1,213.8 MW

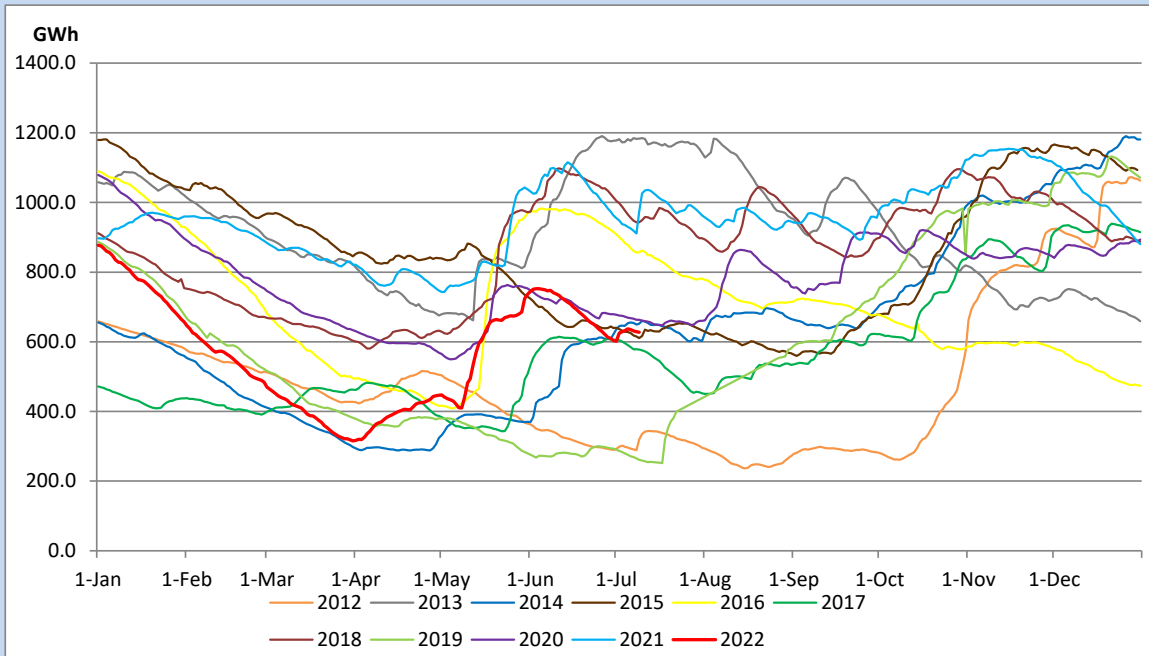
Above figures are excluding contribution from Roof Top Solar, 1MW solar, certain Wind plants and Mini Hydro plants

Reservoir Levels - as at 06.00 Hr on July 11, 2022

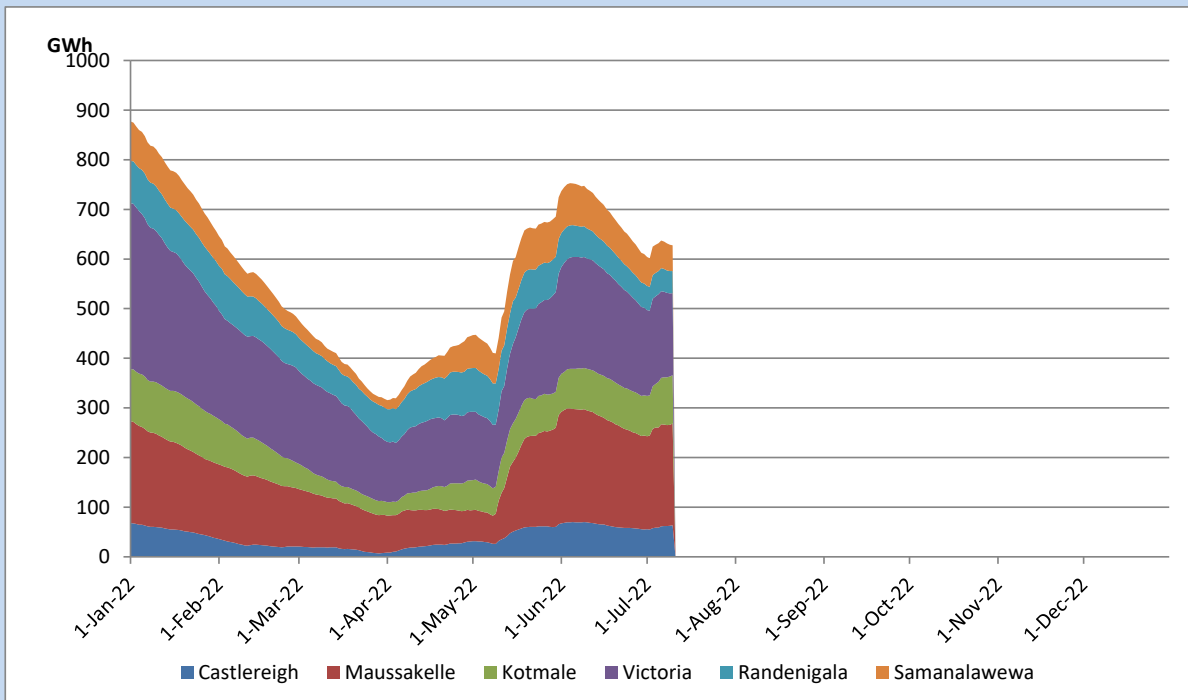


Total Reservoir Level	627.5 GWh
% of Total capacity	52.1%

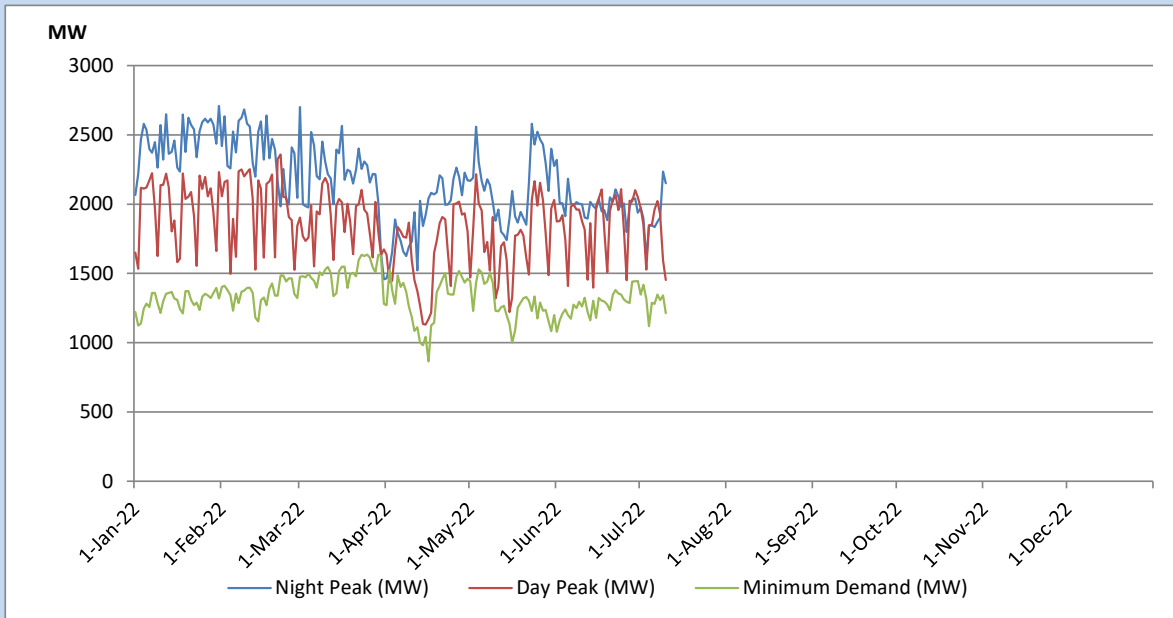
Comparison of Total Reservoir Storage Levels with Past Years



Variation of Major Hydro Reservoir Levels in the current year (GWh)



Variation of Demand during the current year

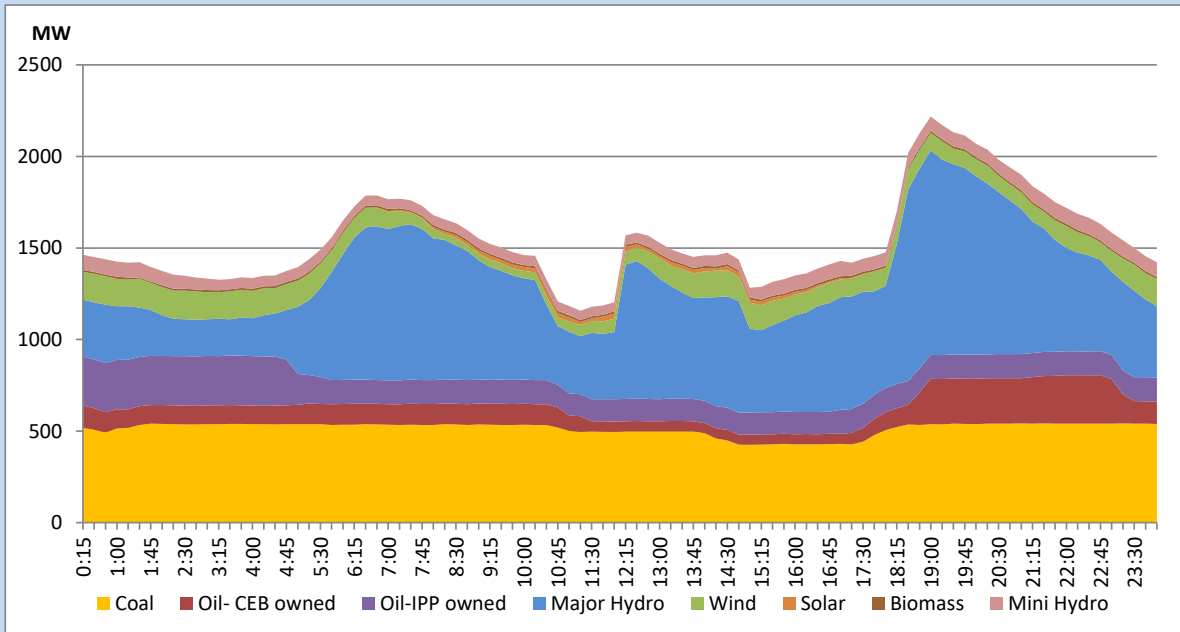


The above figures are excluding contribution from Roof Top Solar, 1MW solar, certain Wind plants and Mini Hydro plants

Daily Load Curve of the Previous day

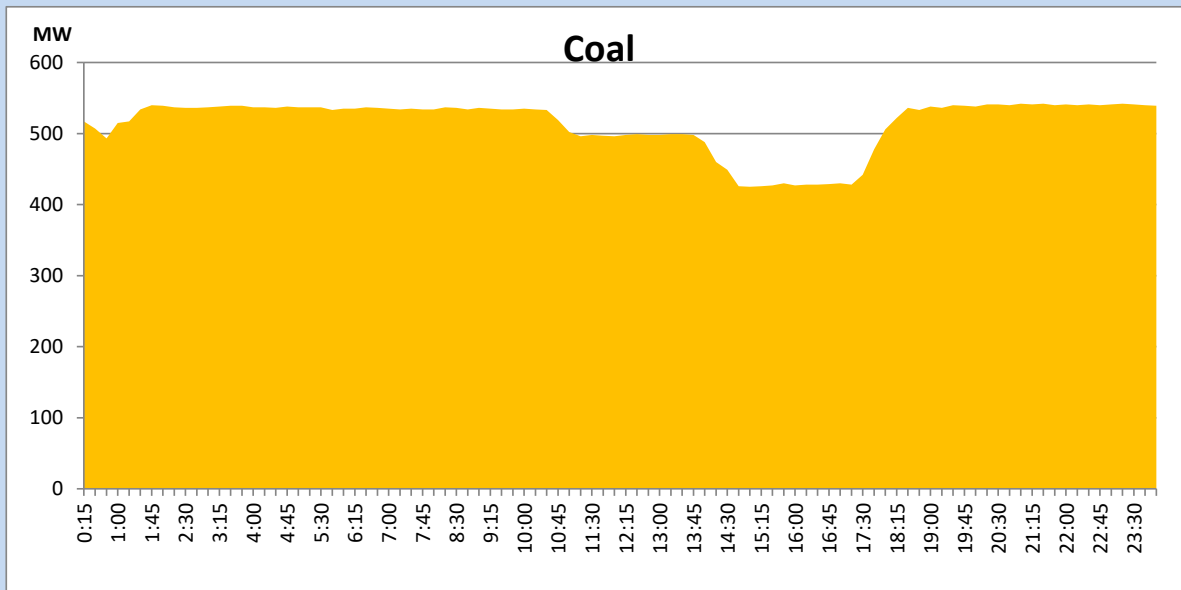
July 9, 2022

Solar and wind data is based on Telemetered Power Stations only



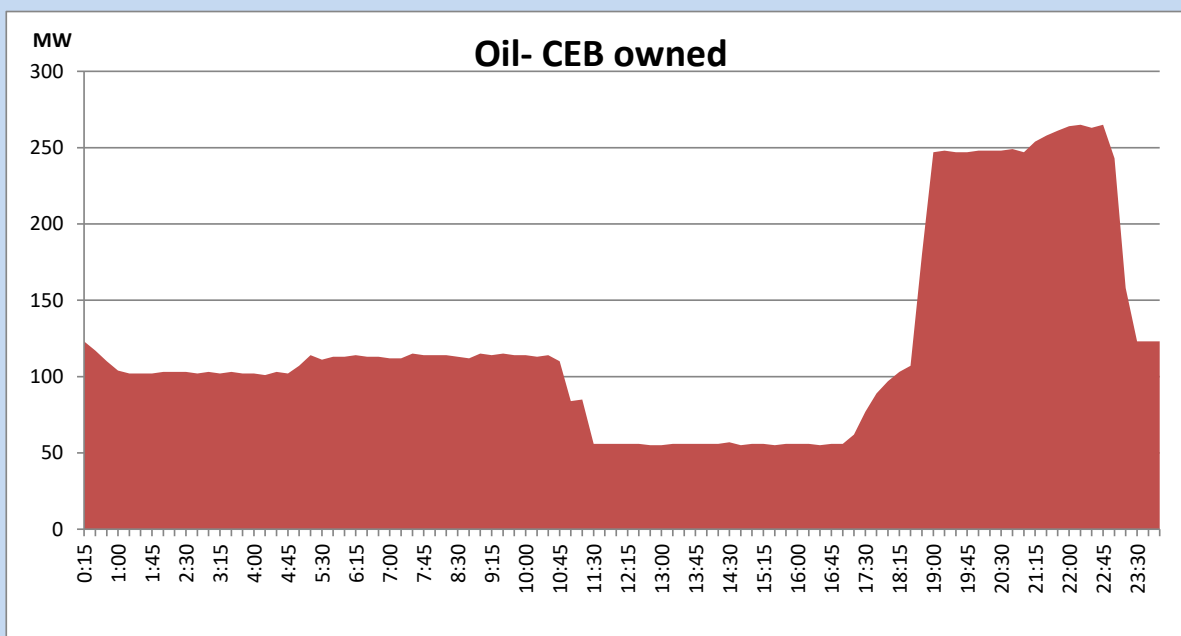
Coal Generation during the Previous day

July 9, 2022



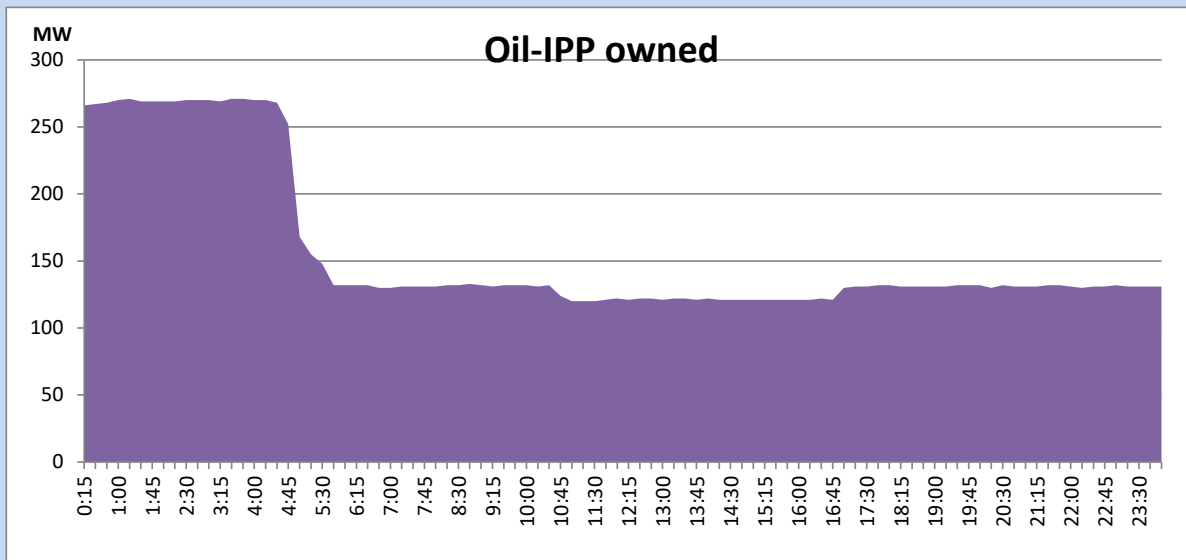
CEB Oil Plant Generation during the Previous day

July 9, 2022



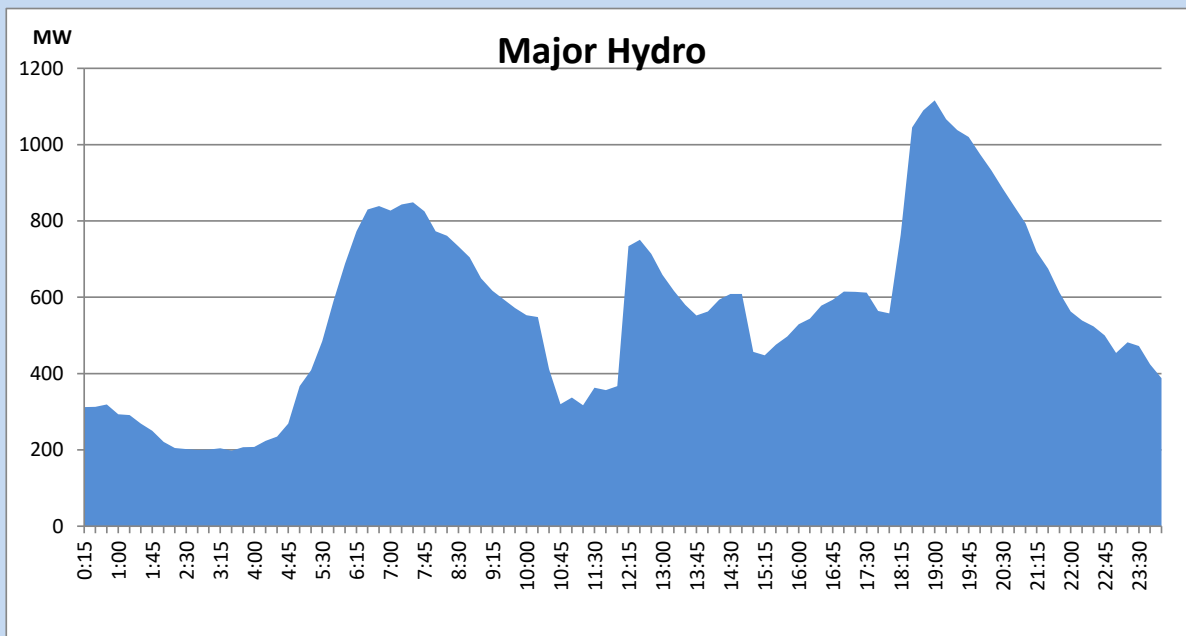
IPP Oil Plant Generation during the Previous day

July 9, 2022



Major Hydro Generation during the Previous day

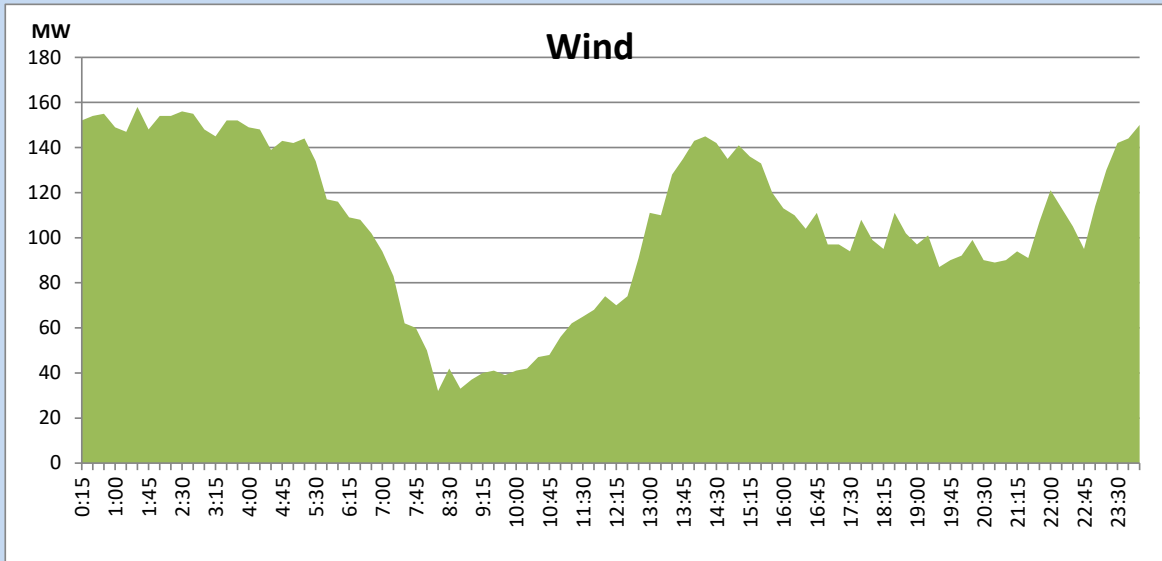
July 9, 2022



Wind Generation during the Previous day

July 9, 2022

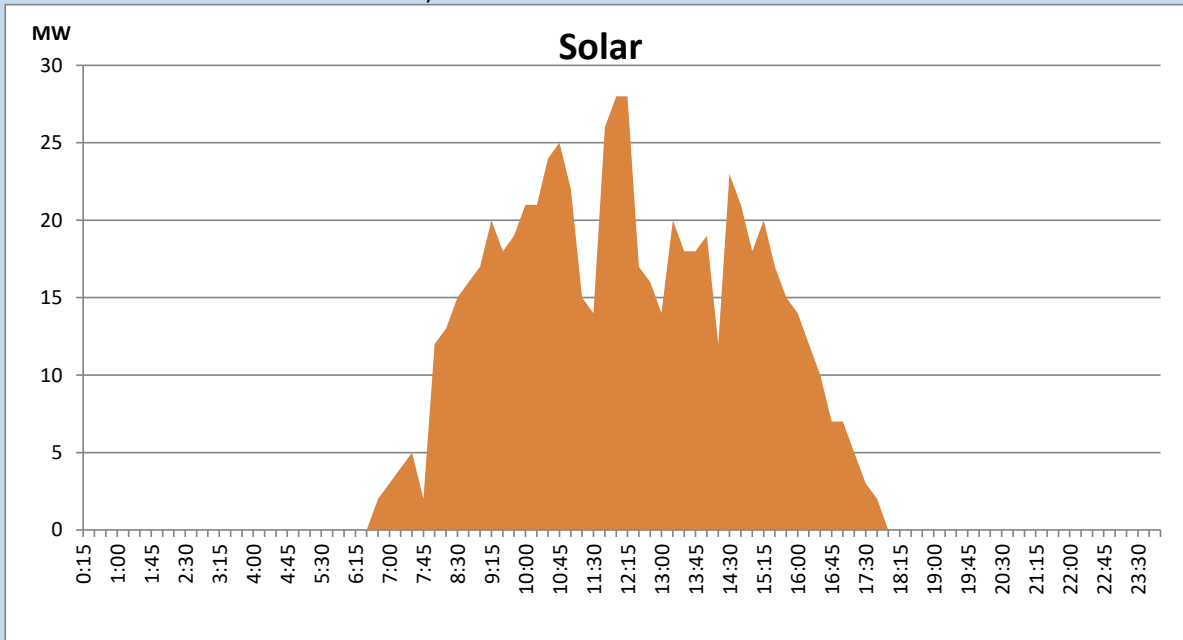
Based on Telemetered Power Stations only



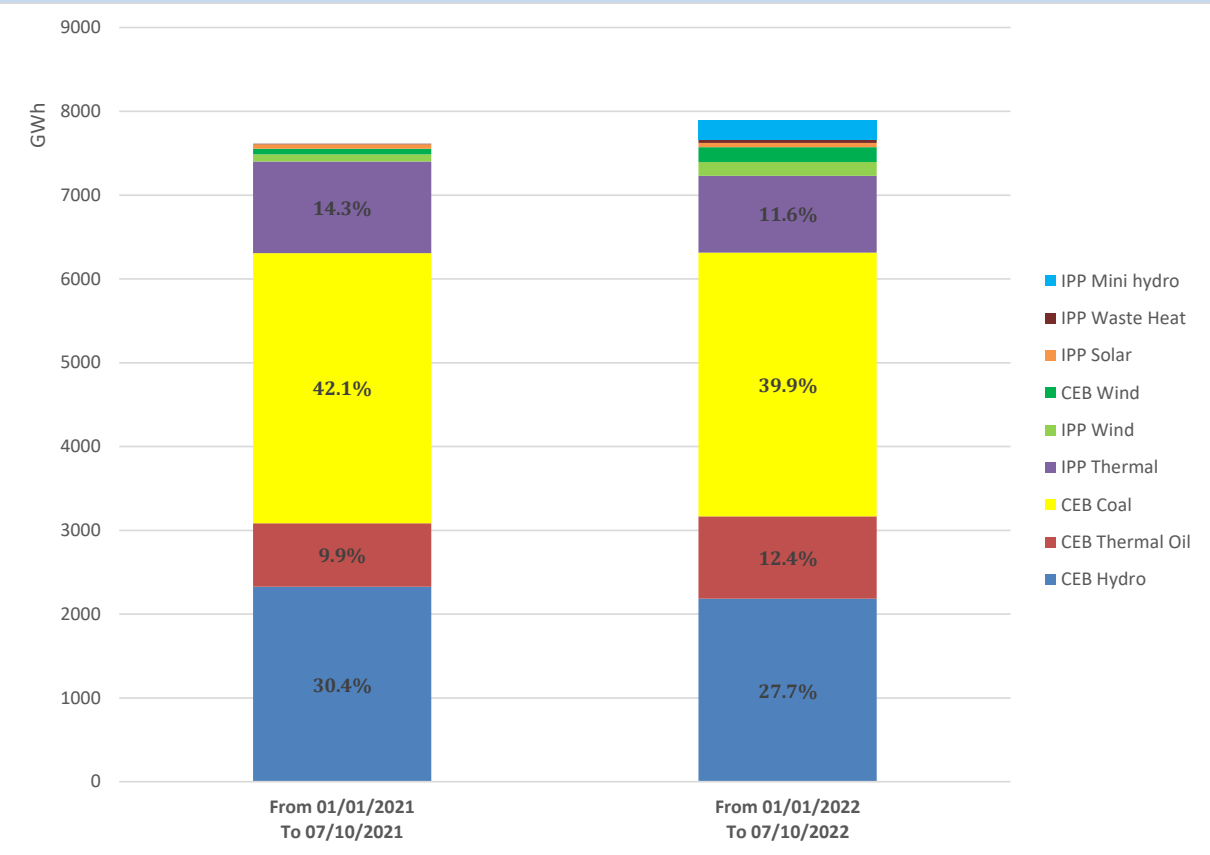
Solar Generation during the Previous day

July 9, 2022

Based on Telemetered Power Stations only



Cumulative Dispatch Comparison with Last Year



Thermal Plant Fuel types

Power Station	Primary Fuel
CEB Thermal	
Sapugaskanda 1	Heavy Fuel
Sapugaskanda 2	Heavy Fuel
Kelanitissa Small Gas Turbines	Auto Diesel
GT 7 - Kelanitissa	Auto Diesel
Kelanitissa CCY	Naphtha or Diesel
Lakvijaya 1	Coal
Lakvijaya 2	Coal
Lakvijaya 3	Coal
Uthuru Janani	Heavy Fuel
Barge CEB	Heavy Fuel

Power Station	Primary Fuel
Private Thermal	
Sojitz - Kelanitissa	Auto Diesel
West Coast	Auto Diesel / Heavy Fuel
ACE Matara	Heavy Fuel
ACE Embilipitiya	Heavy Fuel

Major Incidents during the day -as reported by CEB morning of

July 11, 2022

- 1) Rotational manual load shedding was carried out from 10:20 hrs to 12:00 hrs and 14:40 hrs to 18:00 hrs.
- 2) Samanalawewa both units tripped at 12:10hrs rejecting 120MW from the system . The system recovered with the operation of UFLS stage-II.
All affected feeders were normalized by 12:28hrs. Samanalawewa both units resumed generation at 12:32hrs.
- 3) Polpitiya unit 01 tripped at 14:50hrs due to the shear pin failure alarm. The unit made unavailable for night peak from 16:00hrs. Hence, the entire Laxapana complex had to be curtailed accordingly during night peak. Polpitiya unit 01 resumed generation at 23:27hrs.