

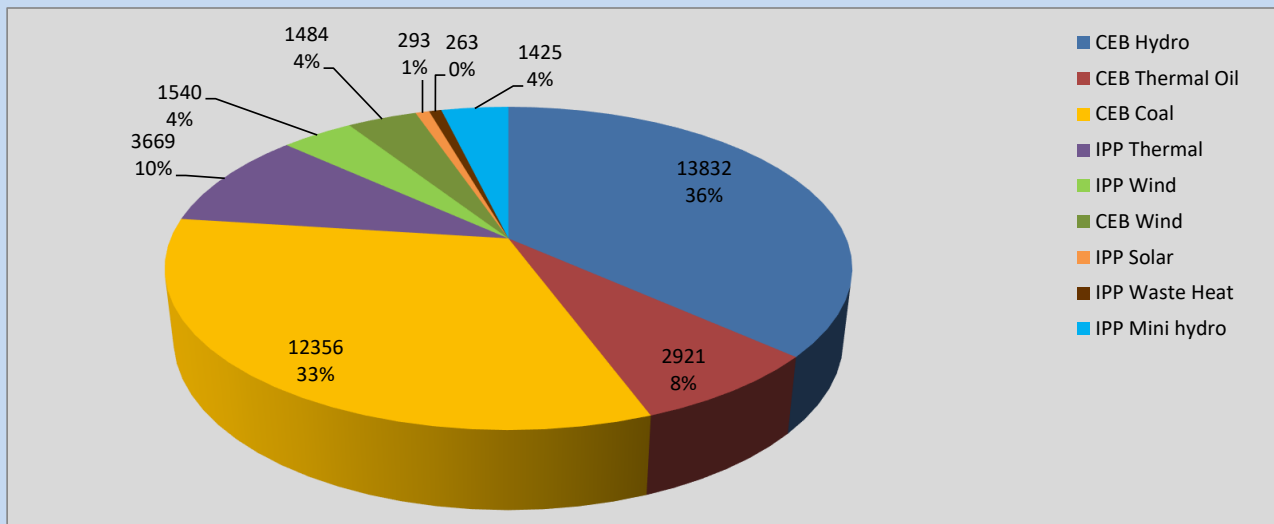
Generation and Reservoirs Statistics

July 9, 2022



PUBLIC UTILITIES COMMISSION OF SRI LANKA

Daily Generation Mix in MWh



Total Generation 37,783 MWh

Note: Above data is excluding contribution from Roof Top Solar, 1MW Solar and certain Mini Hydro plants

Cumulative Dispatch

Note: Following data is Excluding contribution from Roof Top Solar, 1MW solar and Mini Hydro plants

For Current Month

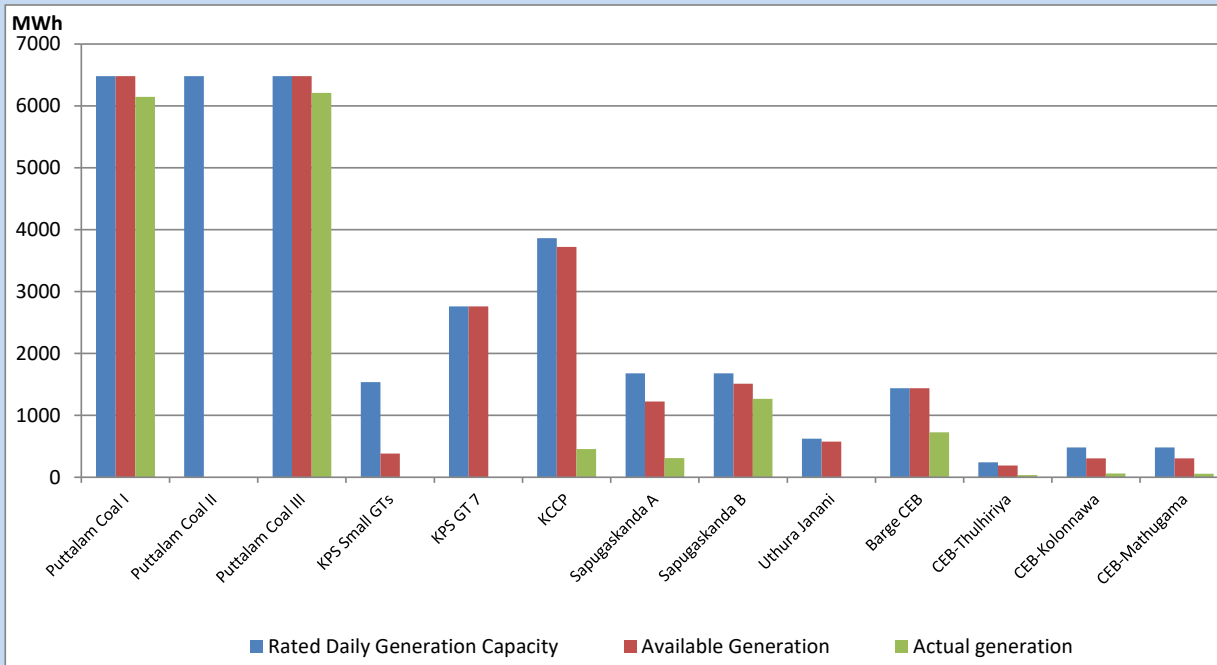
Category	Dispatch (GWh)	Percentage
CEB Hydro	121.07	34.63%
CEB Thermal Oil	39.00	11.16%
CEB Coal	109.25	31.25%
IPP Thermal	41.24	11.80%
SPP Wind	10.85	3.10%
CEB Wind	10.33	2.95%
SPP Solar	2.46	0.70%
SPP Solid Waste	2.29	0.66%
Mini Hydro	13.12	3.75%
Total	349.61	

For Current Year

Category	Dispatch (GWh)	Percentage
CEB Hydro	2,172.4	27.65%
CEB Thermal Oil	979.1	12.46%
CEB Coal	3,137.5	39.93%
IPP Thermal	912.8	11.62%
SPP Wind	160.8	2.05%
CEB Wind	176.2	2.24%
SPP Solar	48.9	0.62%
SPP Solid Waste	40.8	0.52%
Mini Hydro	228.7	2.91%
Total	7,857.0	

CEB owned Thermal Plant Dispatch

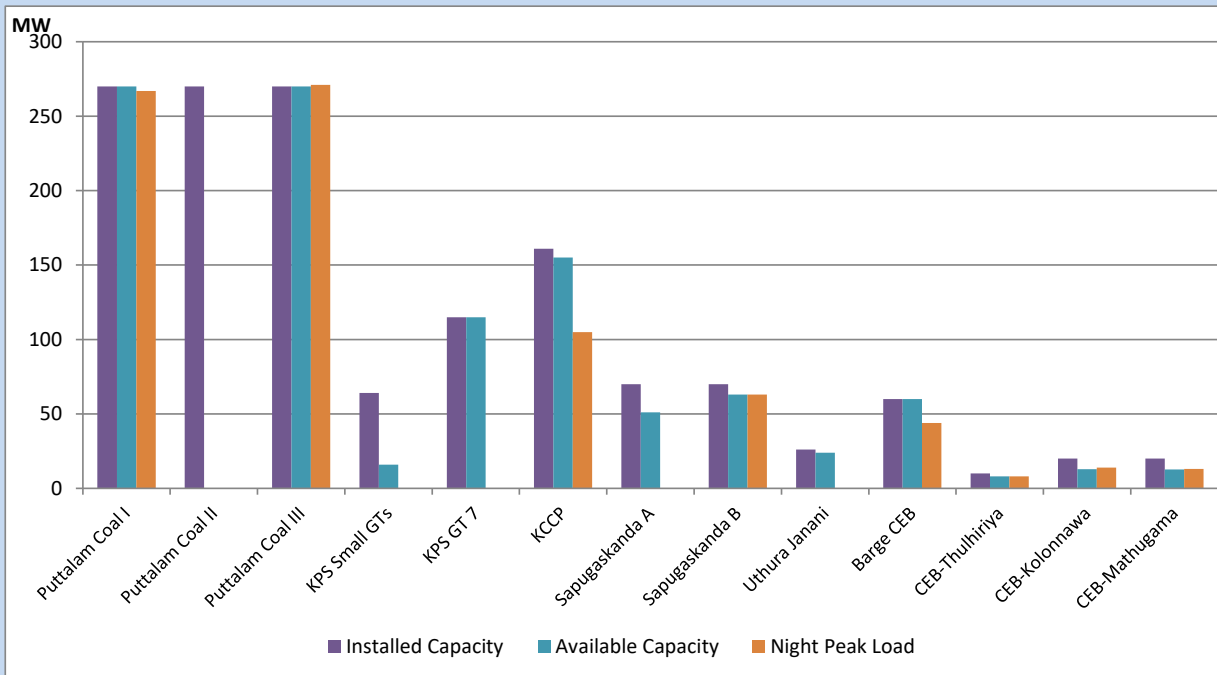
July 9, 2022



Available Generation is estimated based on plant availability at 6.00am on

July 10, 2022

CEB owned Thermal Plant Loading at the Night Peak



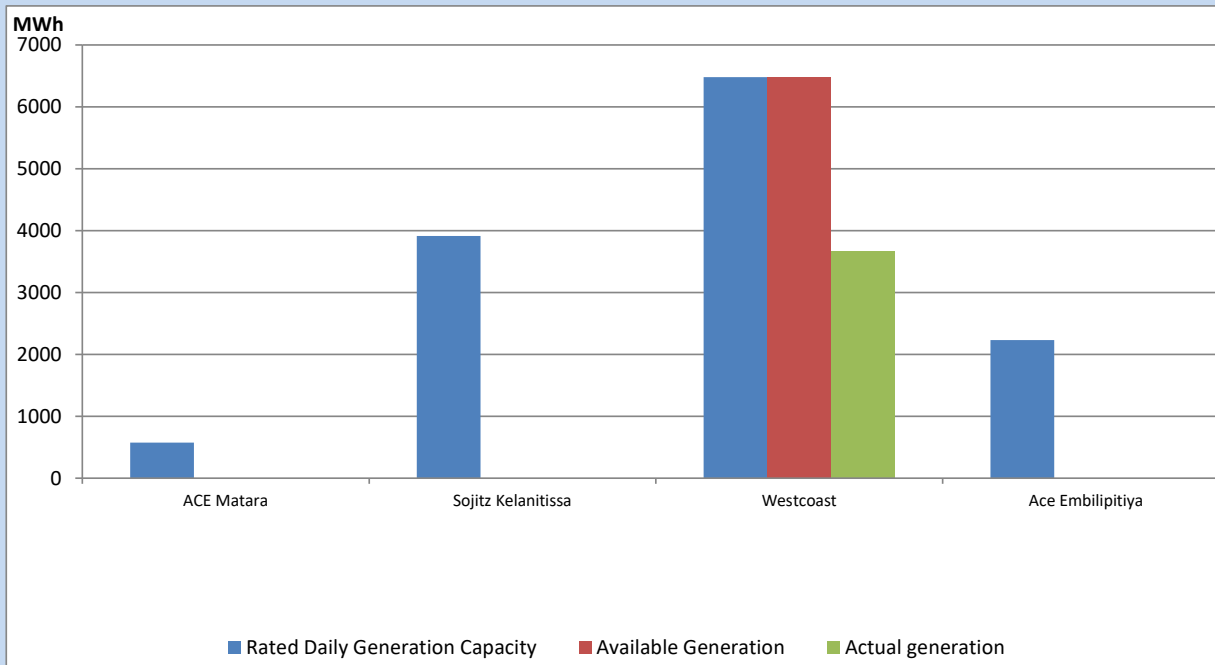
Note- Plant availability is recorded at 6.00 am on

July 10, 2022

IPP owned Thermal Plant Dispatch

July 9, 2022

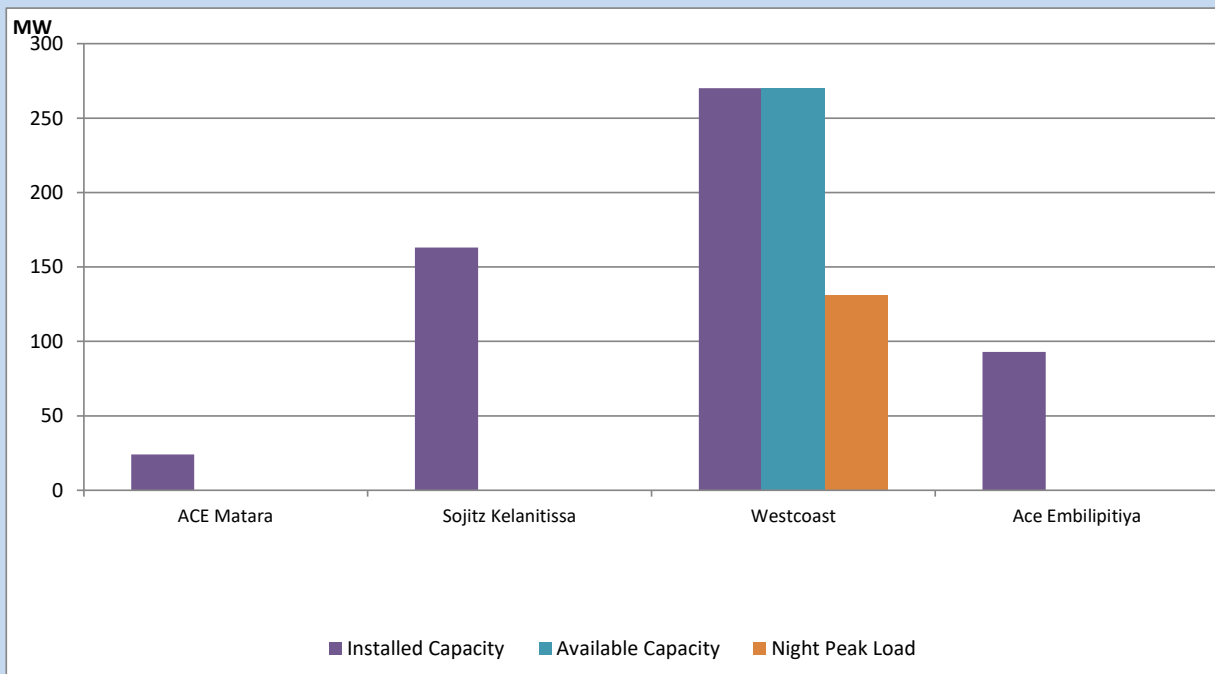
Asia Power, V Power Pallekale, Vpower Galle, V Power Horana, Vpower Hambantota, Vpower Valachchena and Altaqa Mahiyanganaya are not available due to expiration of PPAs



Available Generation is estimated based on plant availability at 6.00am on

July 10, 2022

IPP owned Thermal Plant Loading at the Night Peak

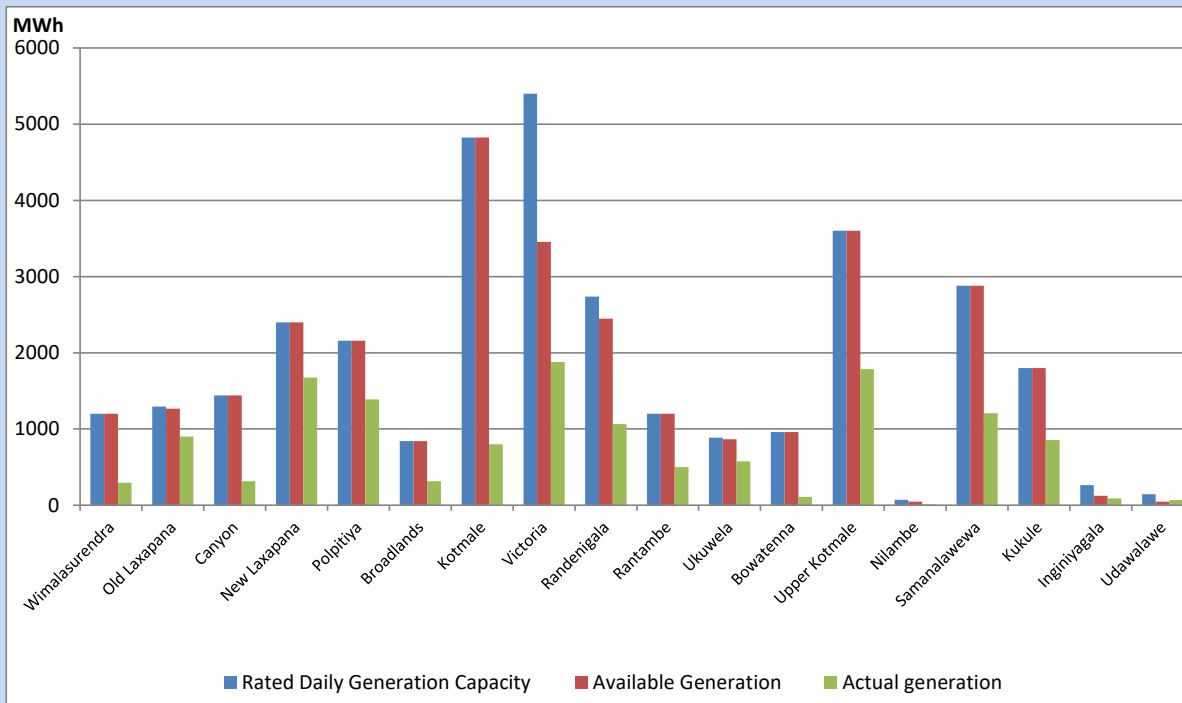


Note- Plant availability is recorded at 6.00 am on

July 10, 2022

Major Hydro Plant Dispatch

July 9, 2022

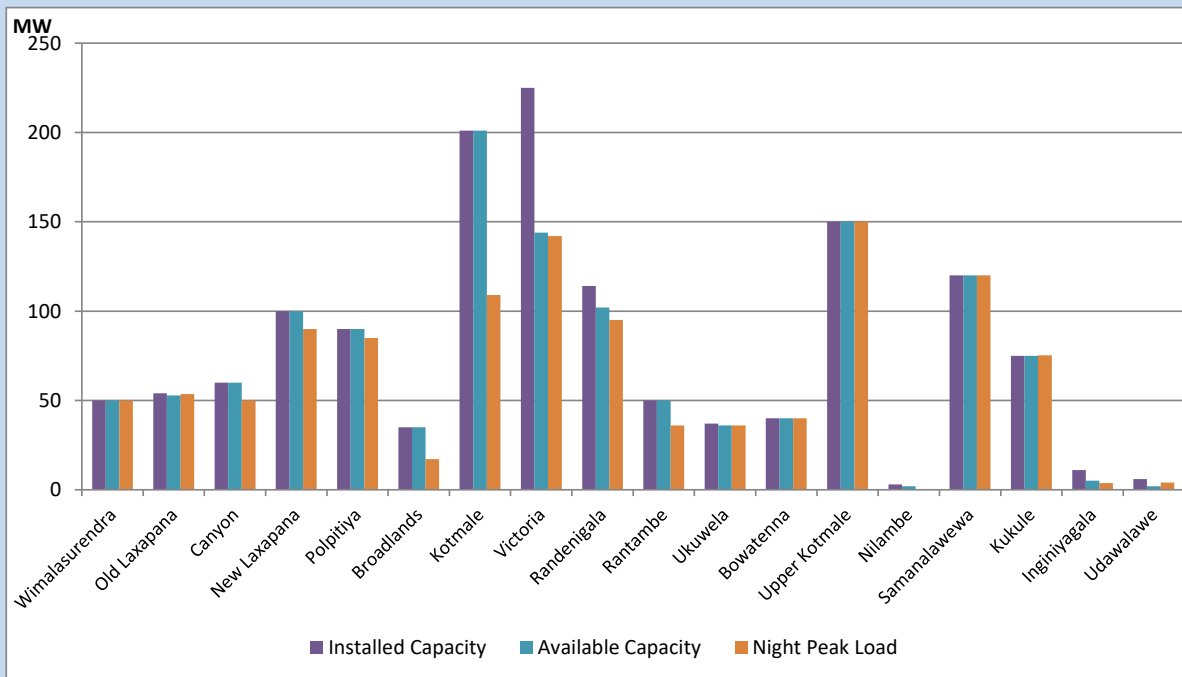


Available Generation is estimated based on plant availability at 6.00am on
Broadlands power plant is operating in the Commissioning Stage

July 10, 2022

Major Hydro Plant Loading at Night Peak

July 9, 2022



Note- Plant availability is recorded at 6.00 am on
Broadlands power plant is operating in the Commissioning Stage

July 10, 2022

Summary of Major Plant performance

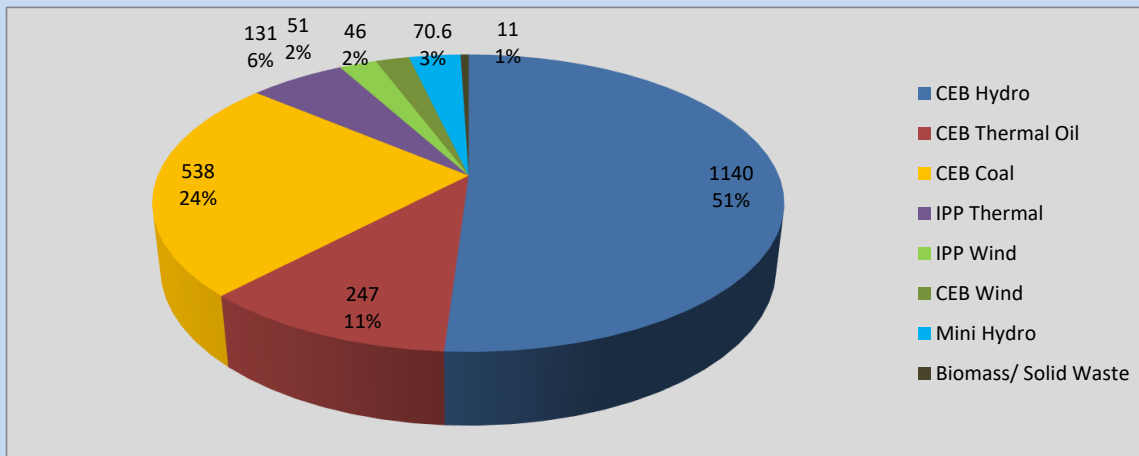
Plant	Installed Capacity	Plant Availability	Night peak Load	Plant Dispatch
	(MW)	(MW)	(MW)	(MWh)
Wimalasurendra	50	50	50	295
Old Laxapana	54	53	54	901
Canyon	60	60	50	316
New Laxapana	100	100	90	1,673
Polpitiya	90	90	85	1,389
Broadlands	35	35	17	316
Kotmale	201	201	109	800
Victoria	225	144	142	1,881
Randenigala	114	102	95	1,063
Rantambe	50	50	36	499
Ukuwela	37	36	36	575
Bowatenna	40	40	40	109
Upper Kotmale	150	150	150	1,785
Nilambe	3	2	0	12
Samanalawewa	120	120	120	1,206
Kukule	75	75	75	856
Inginiyagala	11	5	4	90
Udawalawe	6	2	4	66
Puttalam Coal I	270	270	267	6,145
Puttalam Coal II	270	0	0	0
Puttalam Coal III	270	270	271	6,211
KPS Small GTs	64	16	0	0
KPS GT 7	115	115	0	0
KCCP	161	155	105	458
Sapugaskanda A	70	51	0	312
Sapugaskanda B	70	63	63	1,269
Uthura Janani	26	24	0	0
Barge CEB	60	60	44	725
CEB-Thulhiriya	10	8	8	37
CEB-Kolonnawa	20	13	14	61
CEB-Mathugama	20	13	13	59
ACE Matara	24	0	0	0
Sojitz Kelanitissa	163	0	0	0
West Coast	270	270	131	3,669
ACE Embilipitiya	93	0	0	0
Total	3,397	2,642	2,251	37,783

Plant availability is the availability recorded at 6 am on

July 10, 2022

Contribution to the Night Peak in MW

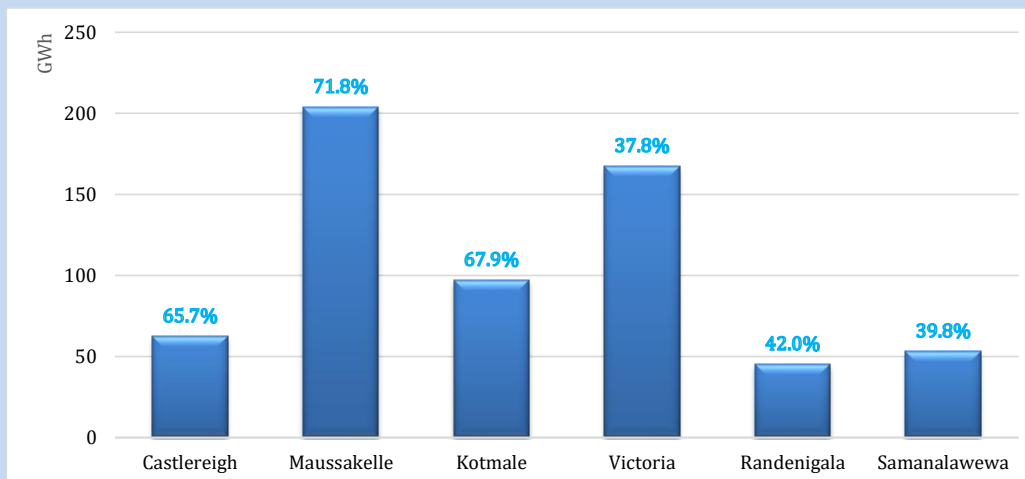
July 9, 2022



Night Peak*	2,235.0 MW
Day Peak	1,594.0 MW
Minimum Demand	1,341.4 MW

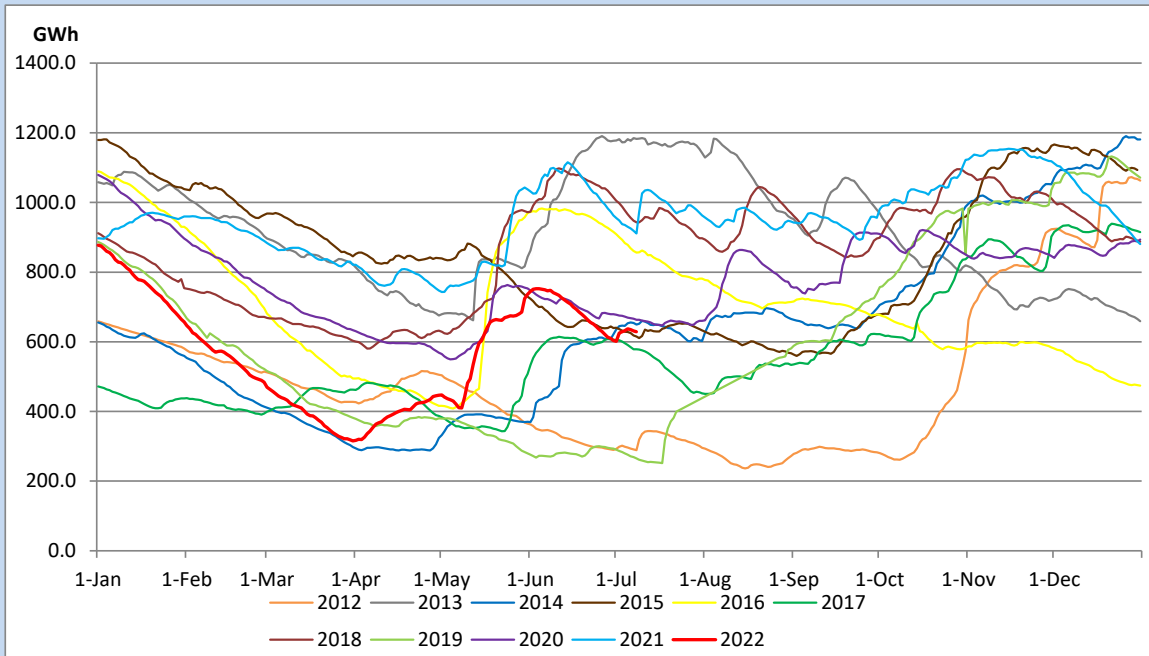
Above figures are excluding contribution from Roof Top Solar, 1MW solar, certain Wind plants and Mini Hydro plants

Reservoir Levels - as at 06.00 Hr on July 10, 2022

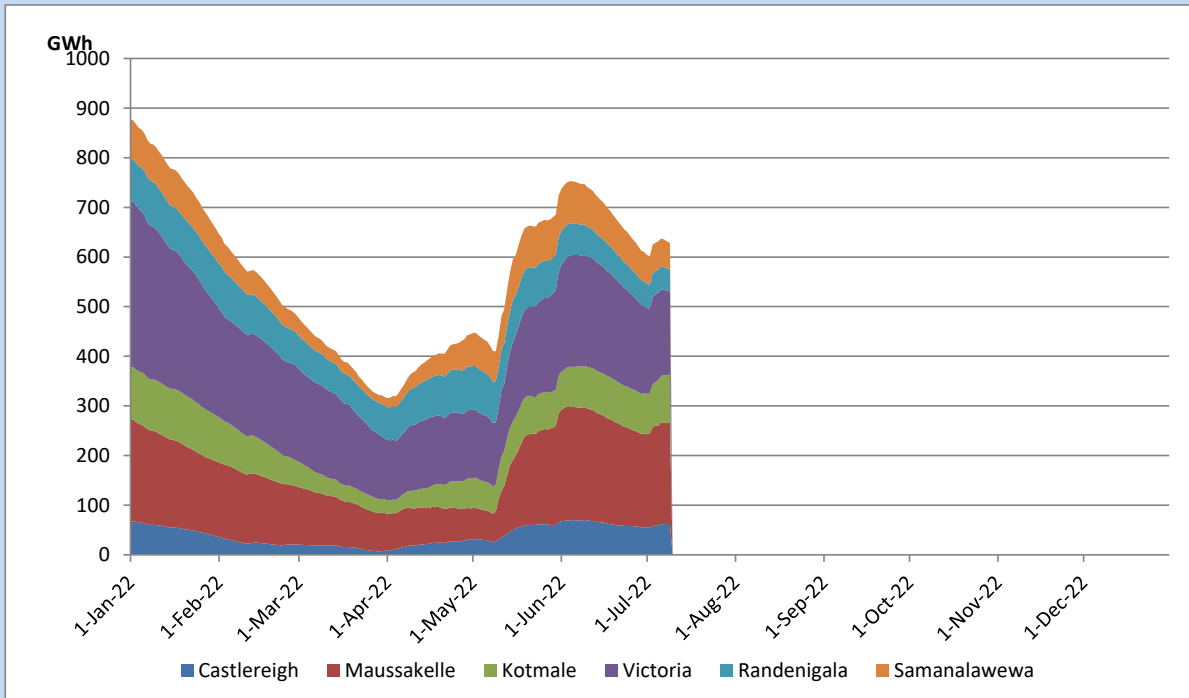


Total Reservoir Level	628.6 GWh
% of Total capacity	52.2%

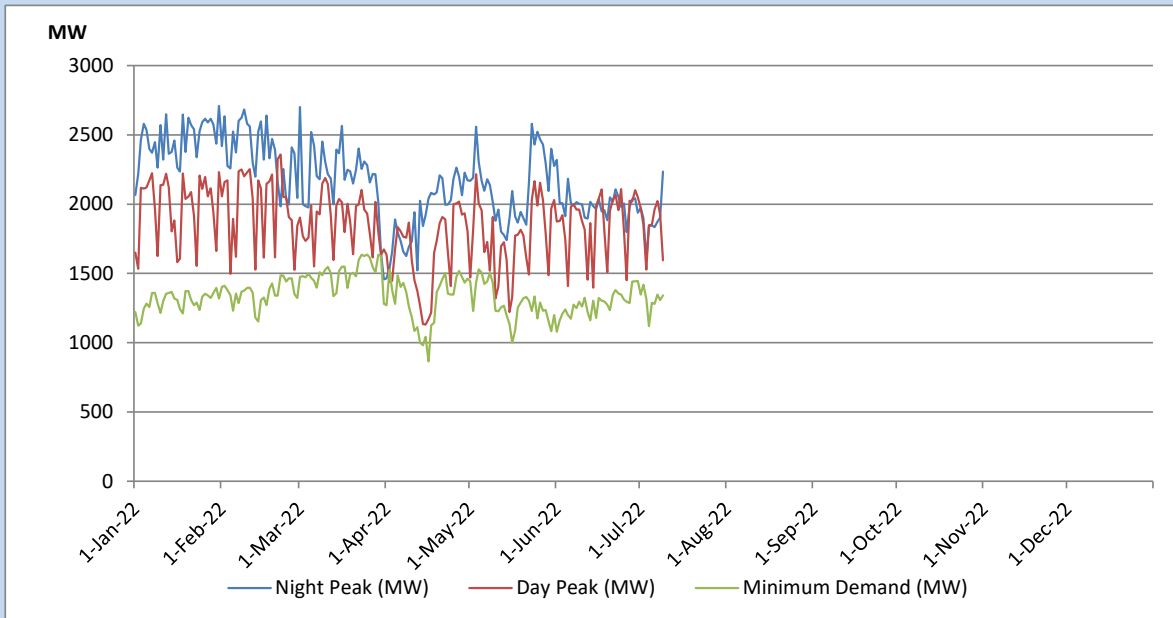
Comparison of Total Reservoir Storage Levels with Past Years



Variation of Major Hydro Reservoir Levels in the current year (GWh)



Variation of Demand during the current year

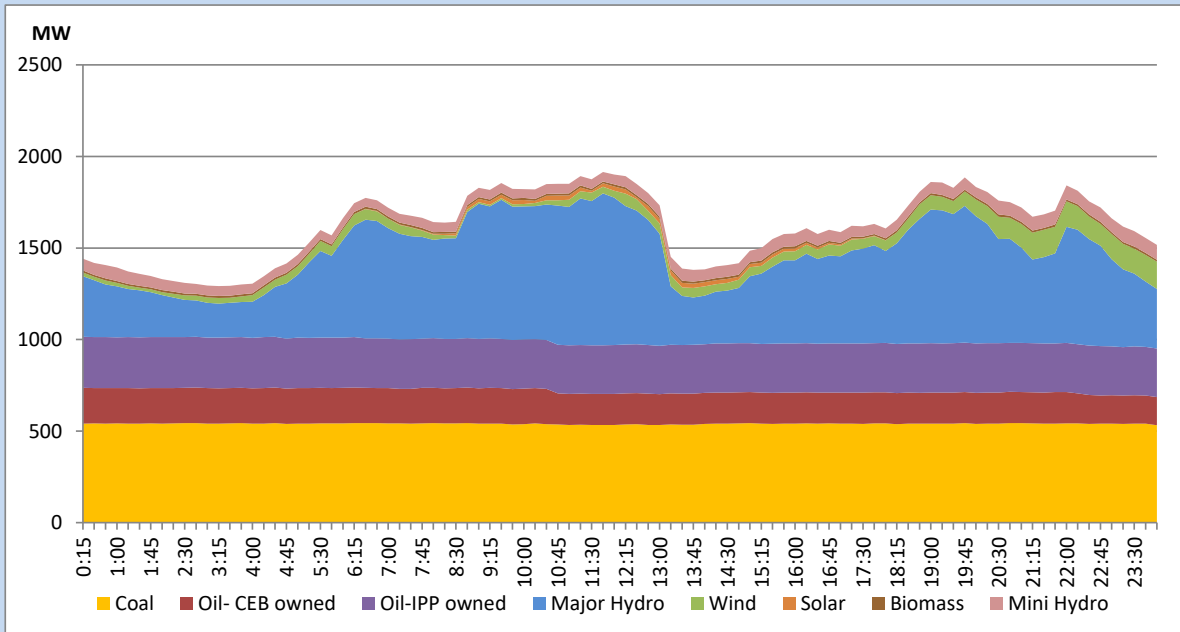


The above figures are excluding contribution from Roof Top Solar, 1MW solar, certain Wind plants and Mini Hydro plants

Daily Load Curve of the Previous day

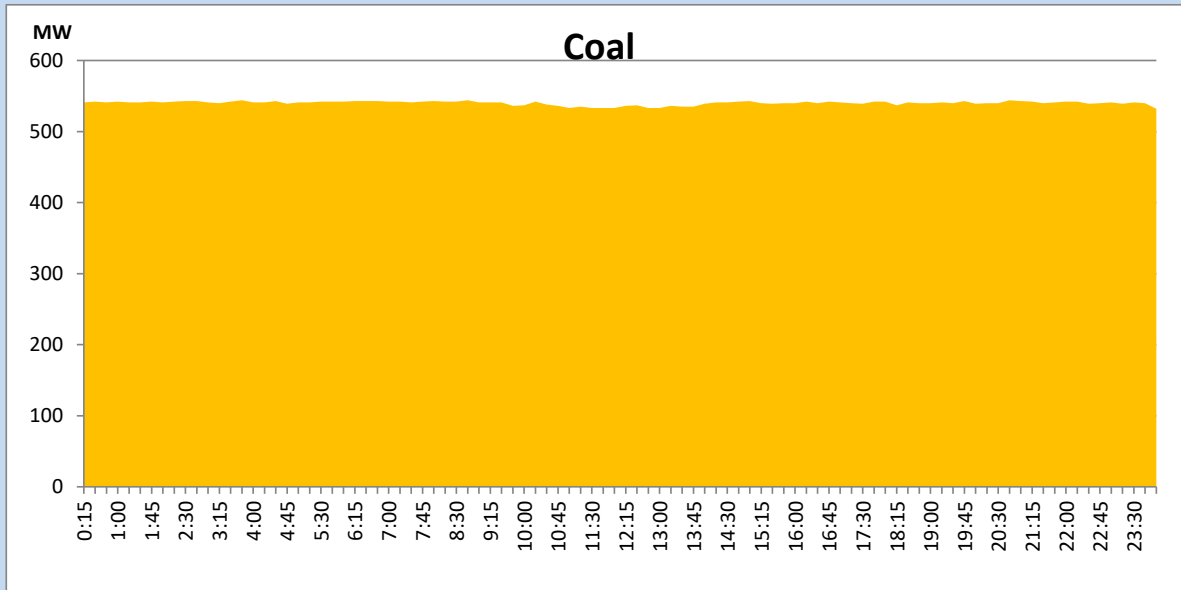
July 8, 2022

Solar and wind data is based on Telemetered Power Stations only



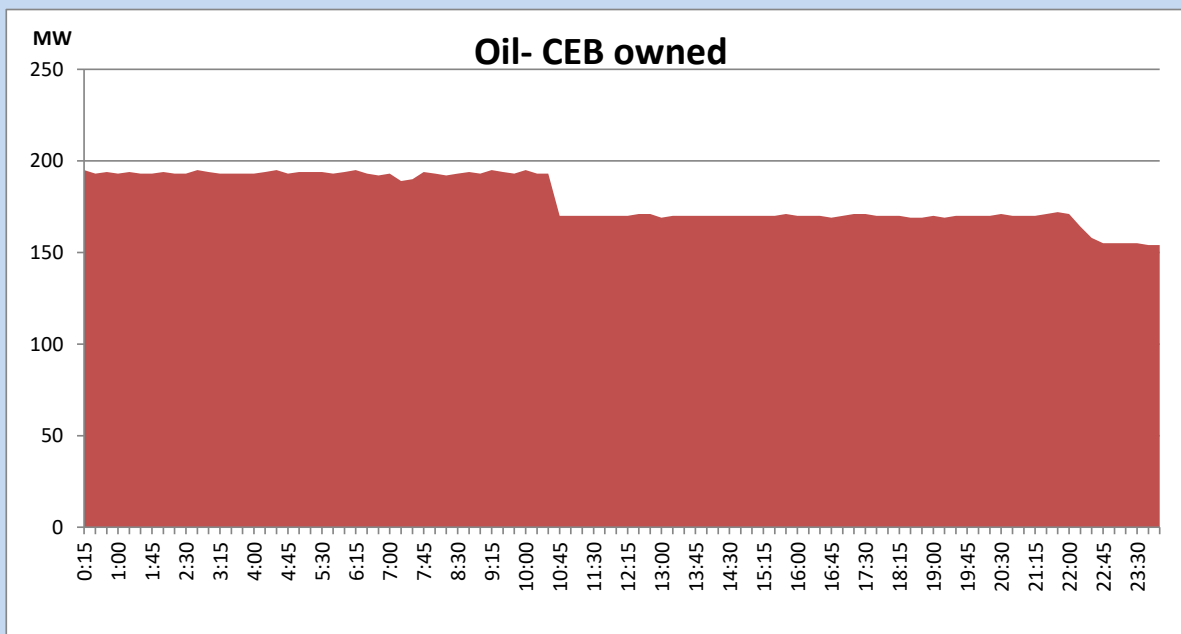
Coal Generation during the Previous day

July 8, 2022



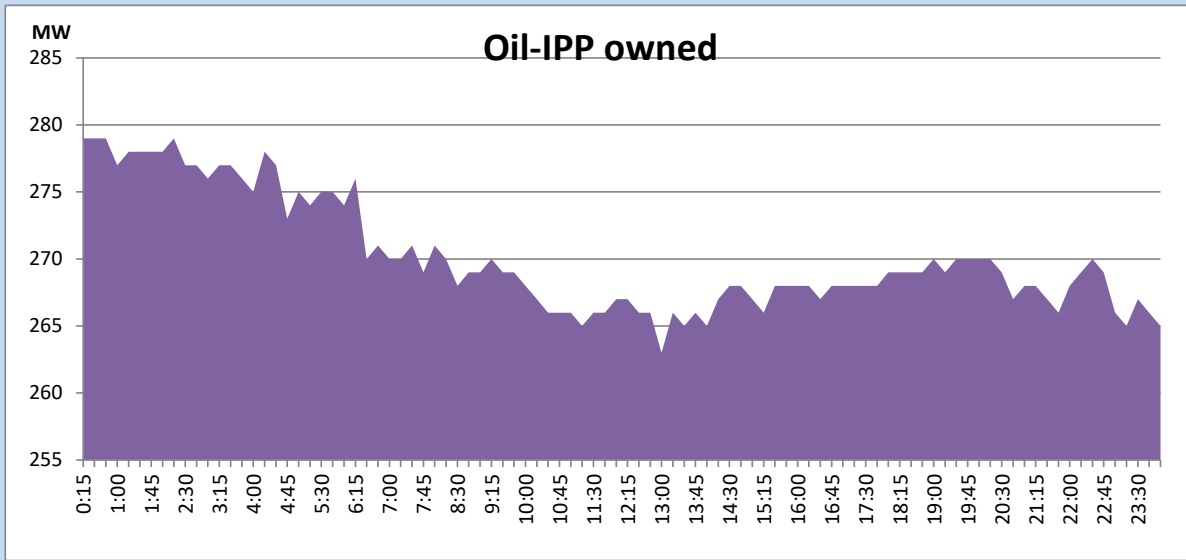
CEB Oil Plant Generation during the Previous day

July 8, 2022



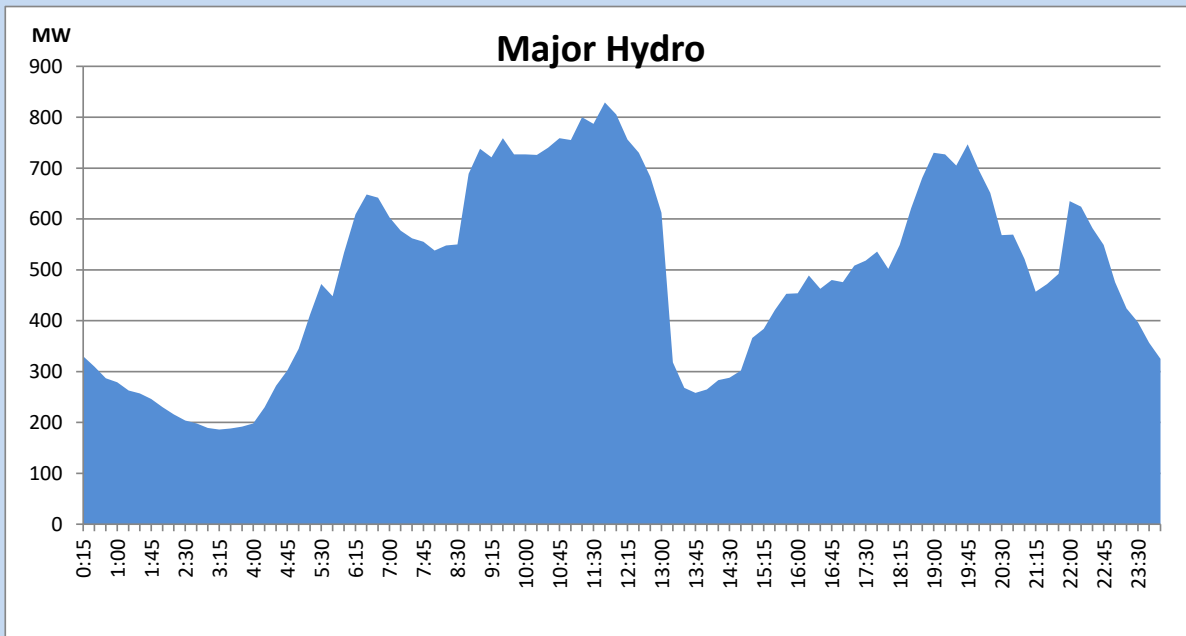
IPP Oil Plant Generation during the Previous day

July 8, 2022



Major Hydro Generation during the Previous day

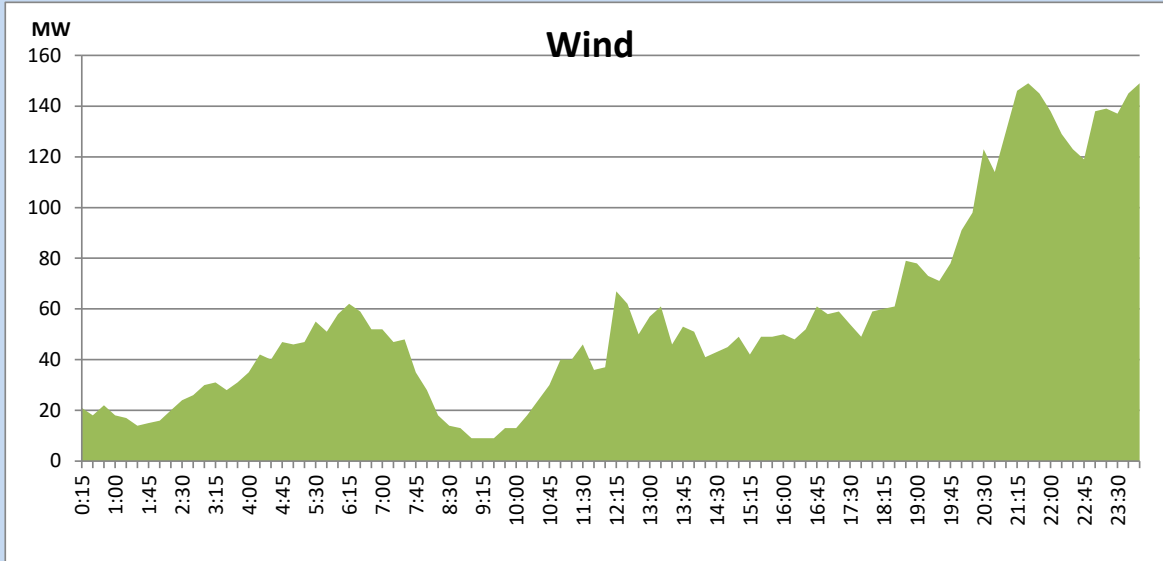
July 8, 2022



Wind Generation during the Previous day

July 8, 2022

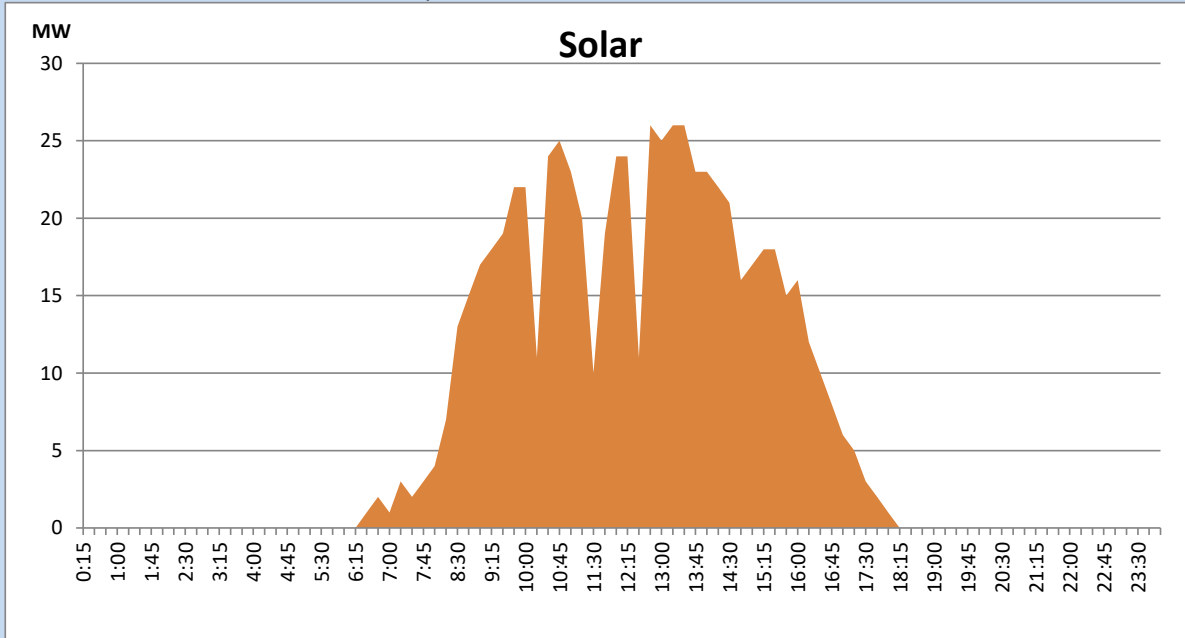
Based on Telemetered Power Stations only



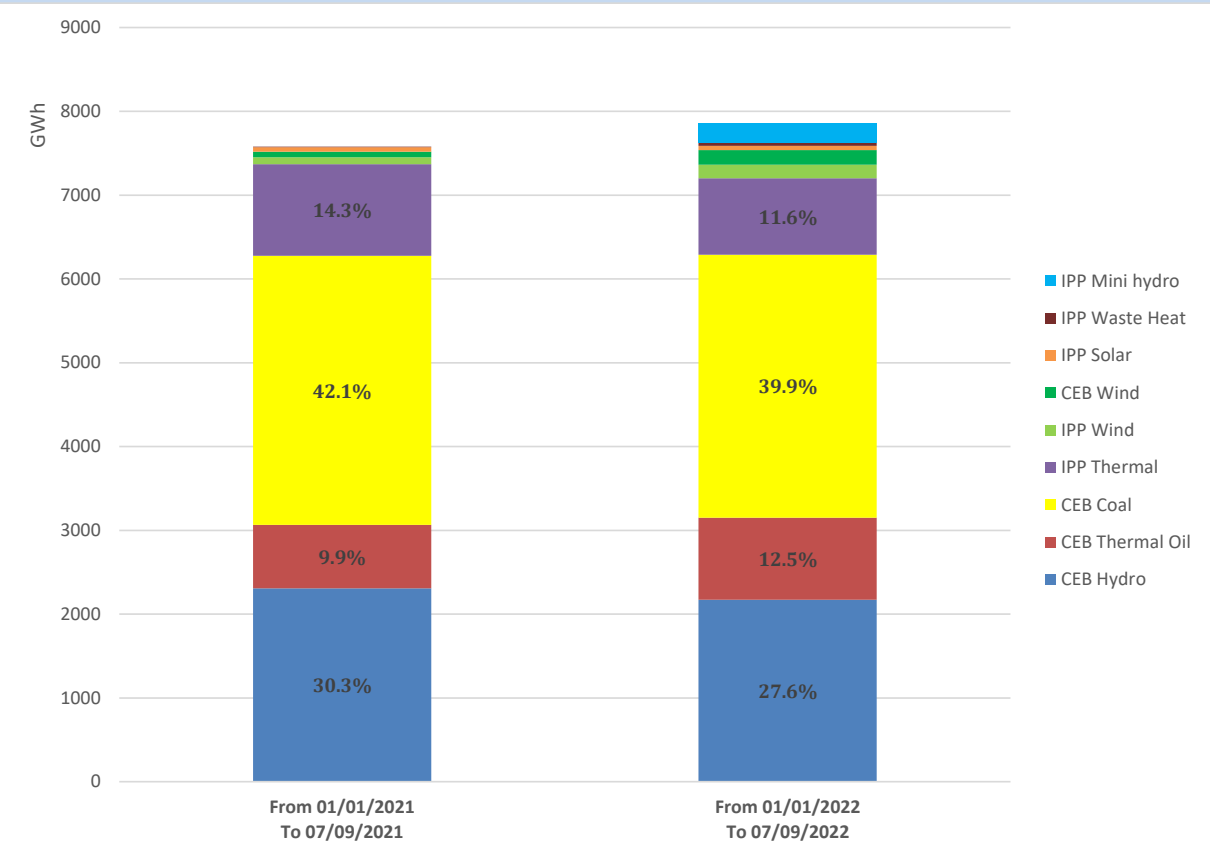
Solar Generation during the Previous day

July 8, 2022

Based on Telemetered Power Stations only



Cumulative Dispatch Comparison with Last Year



Thermal Plant Fuel types

Power Station	Primary Fuel
CEB Thermal	
Sapugaskanda 1	Heavy Fuel
Sapugaskanda 2	Heavy Fuel
Kelanitissa Small Gas Turbines	Auto Diesel
GT 7 - Kelanitissa	Auto Diesel
Kelanitissa CCY	Naphtha or Diesel
Lakvijaya 1	Coal
Lakvijaya 2	Coal
Lakvijaya 3	Coal
Uthuru Janani	Heavy Fuel
Barge CEB	Heavy Fuel

Power Station	Primary Fuel
Private Thermal	
Sojitz - Kelanitissa	Auto Diesel
West Coast	Auto Diesel / Heavy Fuel
ACE Matara	Heavy Fuel
ACE Embilipitiya	Heavy Fuel

Major Incidents during the day -as reported by CEB morning of

July 10, 2022

- 1) Rotational manual load shedding carried out from 10:20 hrs to 12:00 hrs and 14:40 hrs to 18:00 hrs.