

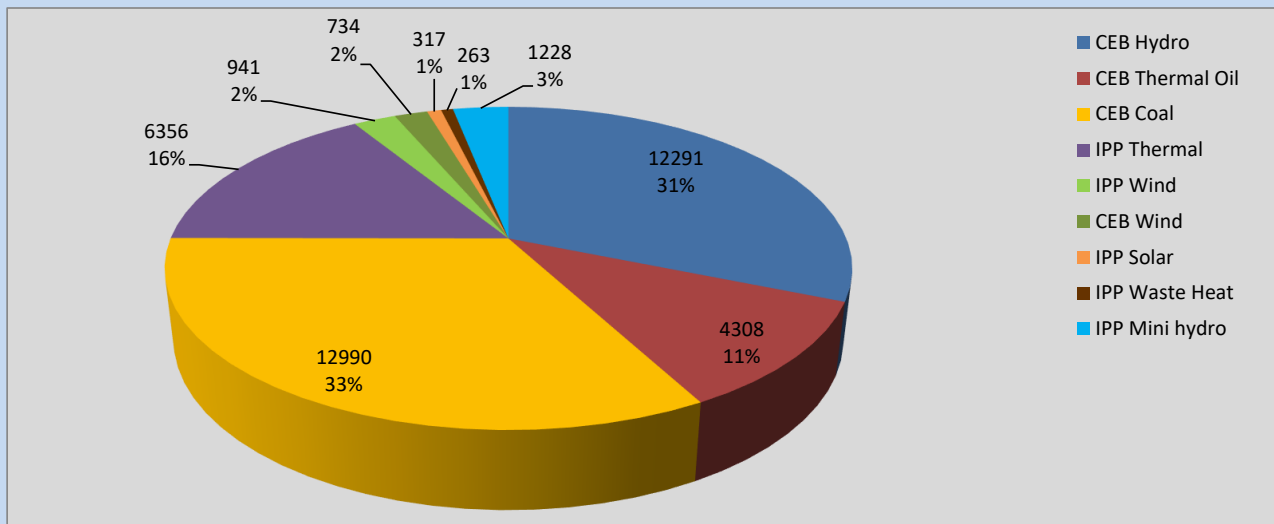
# Generation and Reservoirs Statistics

July 8, 2022



PUBLIC UTILITIES COMMISSION OF SRI LANKA

## Daily Generation Mix in MWh



**Total Generation** **39,428 MWh**

Note: Above data is excluding contribution from Roof Top Solar, 1MW Solar and certain Mini Hydro plants

## Cumulative Dispatch

Note: Following data is Excluding contribution from Roof Top Solar, 1MW solar and Mini Hydro plants

### For Current Month

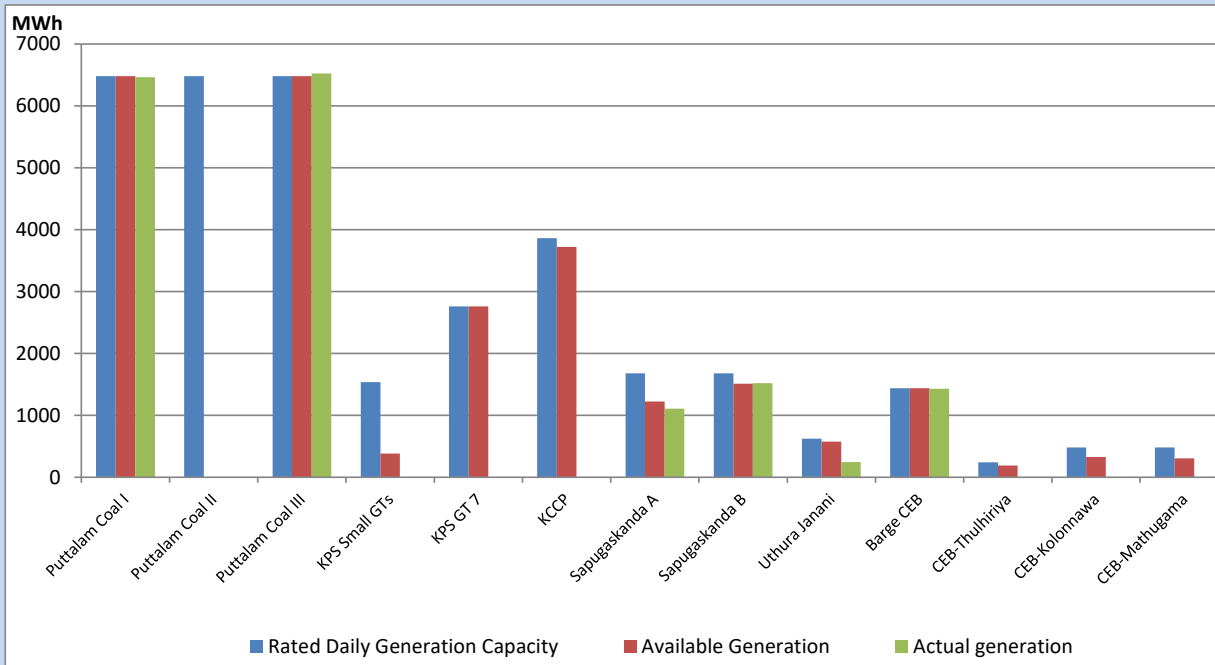
Category	Dispatch (GWh)	Percentage
CEB Hydro	107.24	34.39%
CEB Thermal Oil	36.08	11.57%
CEB Coal	96.89	31.07%
IPP Thermal	37.57	12.05%
SPP Wind	9.31	2.99%
CEB Wind	8.85	2.84%
SPP Solar	2.17	0.70%
SPP Solid Waste	2.03	0.65%
Mini Hydro	11.69	3.75%
<b>Total</b>	<b>311.83</b>	

### For Current Year

Category	Dispatch (GWh)	Percentage
CEB Hydro	2,158.6	27.61%
CEB Thermal Oil	976.2	12.48%
CEB Coal	3,125.1	39.97%
IPP Thermal	909.1	11.63%
SPP Wind	159.2	2.04%
CEB Wind	174.8	2.23%
SPP Solar	48.6	0.62%
SPP Solid Waste	40.5	0.52%
Mini Hydro	227.3	2.91%
<b>Total</b>	<b>7,819.2</b>	

## CEB owned Thermal Plant Dispatch

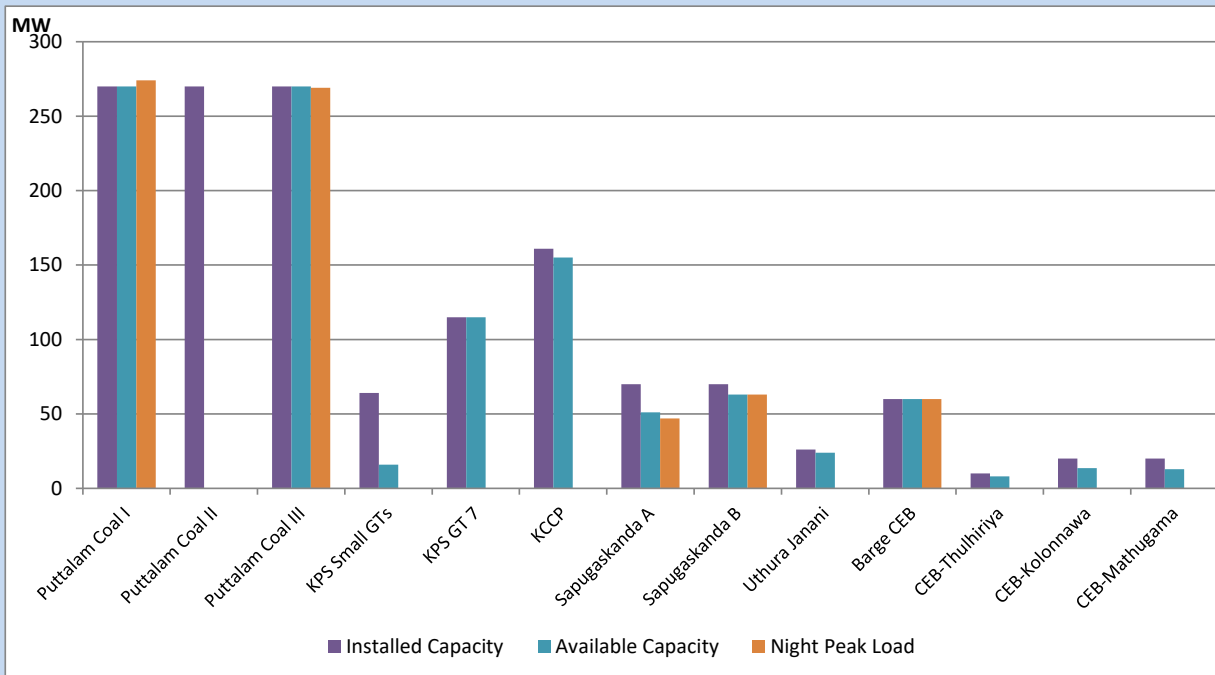
July 8, 2022



Available Generation is estimated based on plant availability at 6.00am on

July 9, 2022

## CEB owned Thermal Plant Loading at the Night Peak



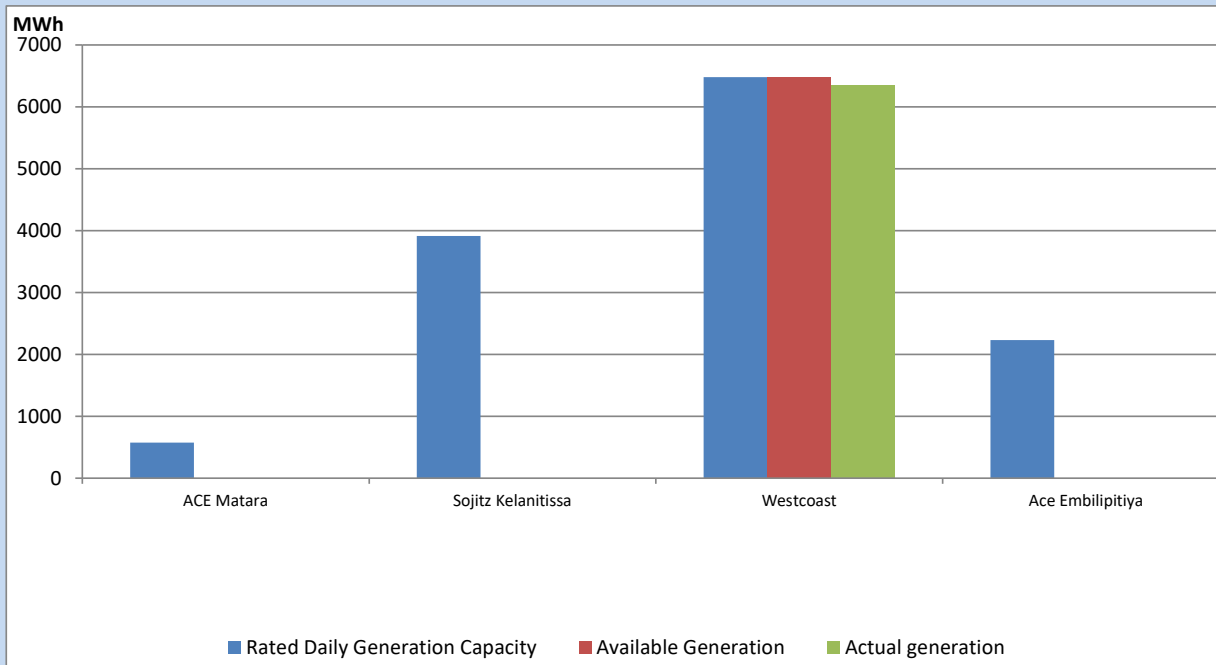
Note- Plant availability is recorded at 6.00 am on

July 9, 2022

## IPP owned Thermal Plant Dispatch

July 8, 2022

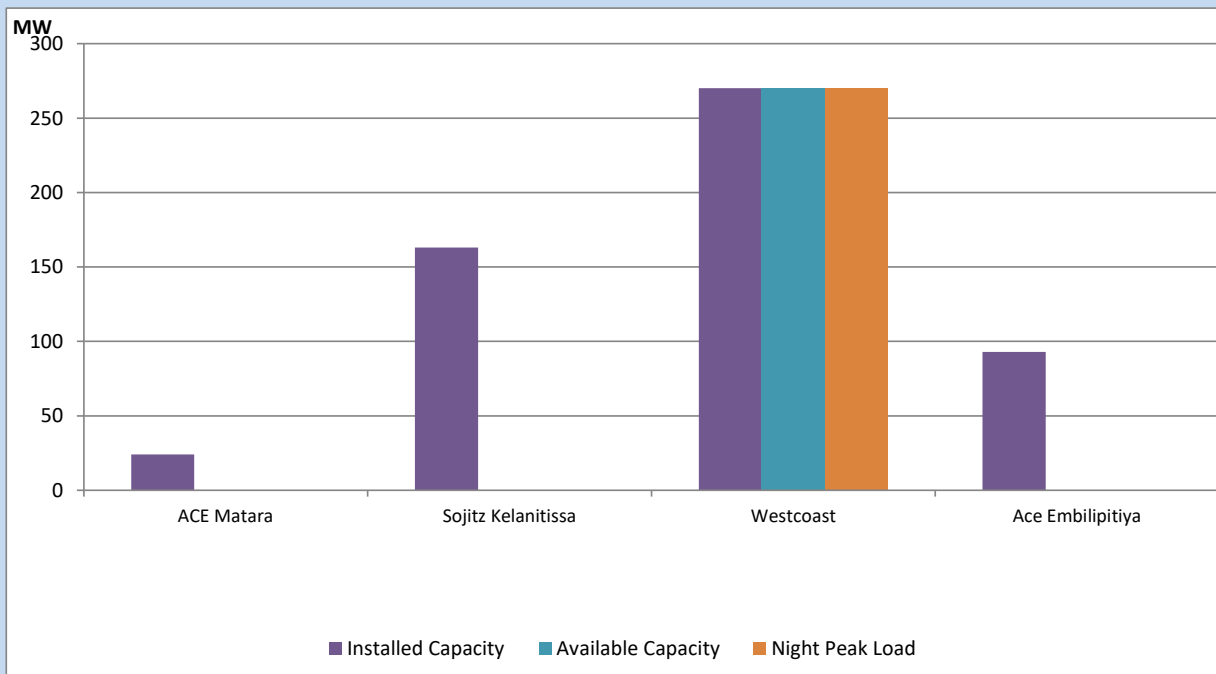
Asia Power, V Power Pallekale, Vpower Galle, V Power Horana, Vpower Hambantota, Vpower Valachchena and Altaqa Mahiyanganaya are not available due to expiration of PPAs



Available Generation is estimated based on plant availability at 6.00am on

July 9, 2022

## IPP owned Thermal Plant Loading at the Night Peak

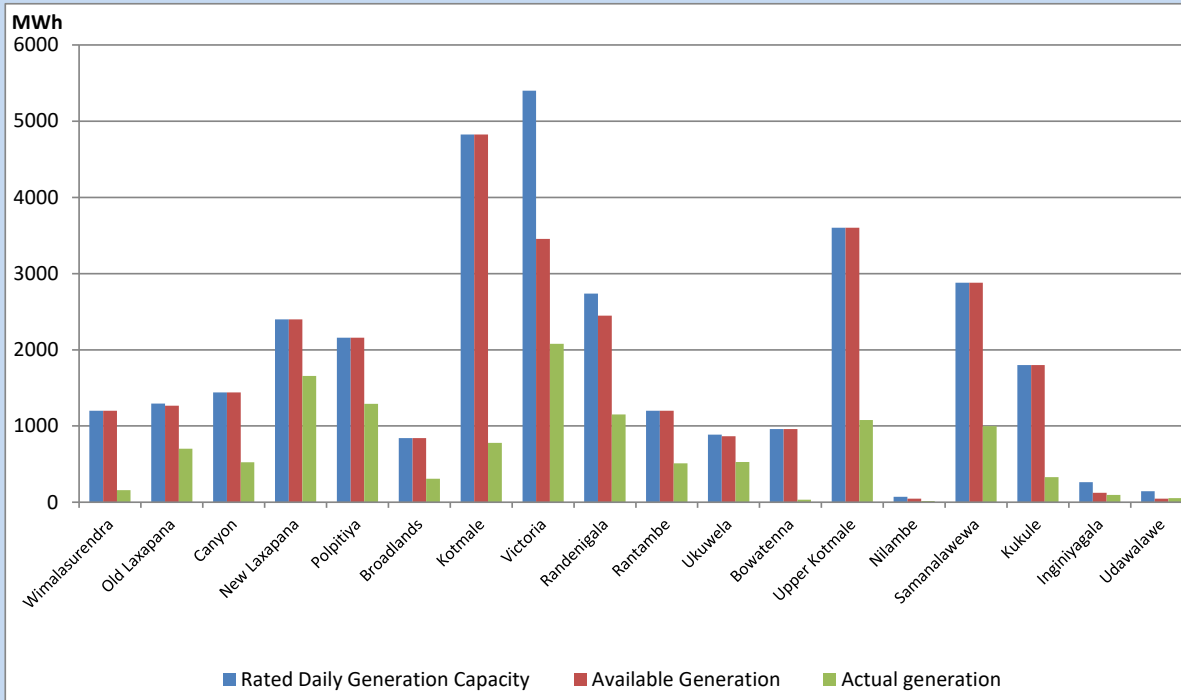


Note- Plant availability is recorded at 6.00 am on

July 9, 2022

## Major Hydro Plant Dispatch

July 8, 2022

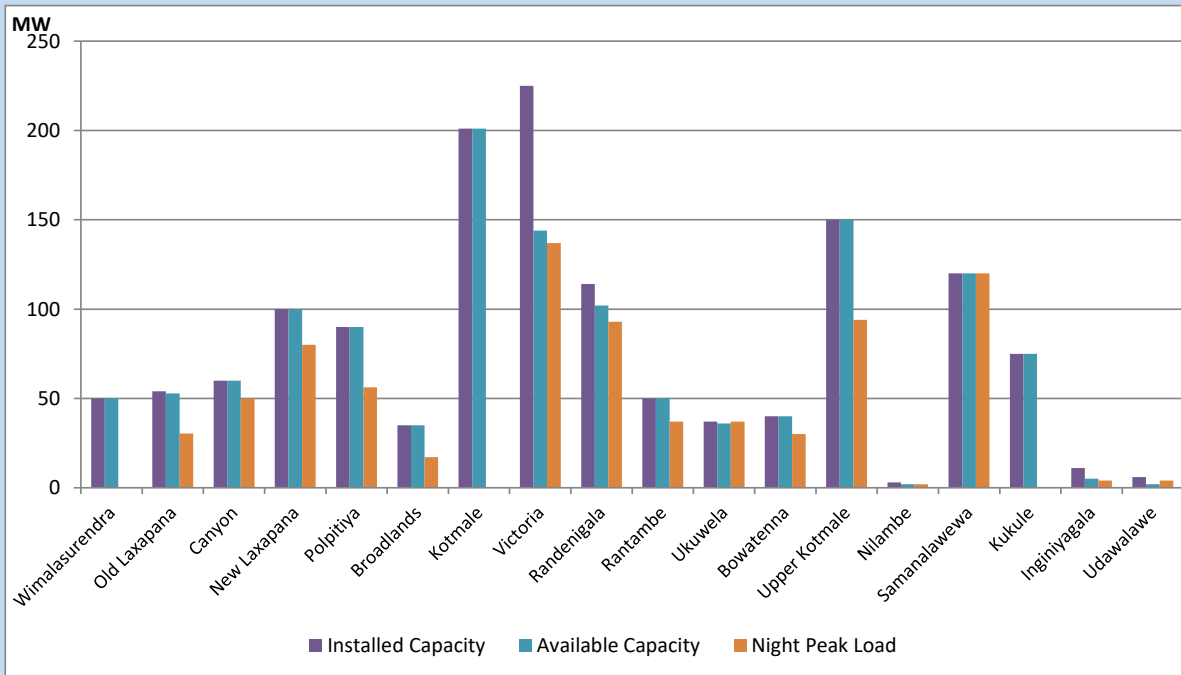


Available Generation is estimated based on plant availability at 6.00am on July 9, 2022  
 Broadlands power plant is operating in the Commissioning Stage

July 9, 2022

## Major Hydro Plant Loading at Night Peak

July 8, 2022



Note- Plant availability is recorded at 6.00 am on July 9, 2022  
 Broadlands power plant is operating in the Commissioning Stage

## Summary of Major Plant performance

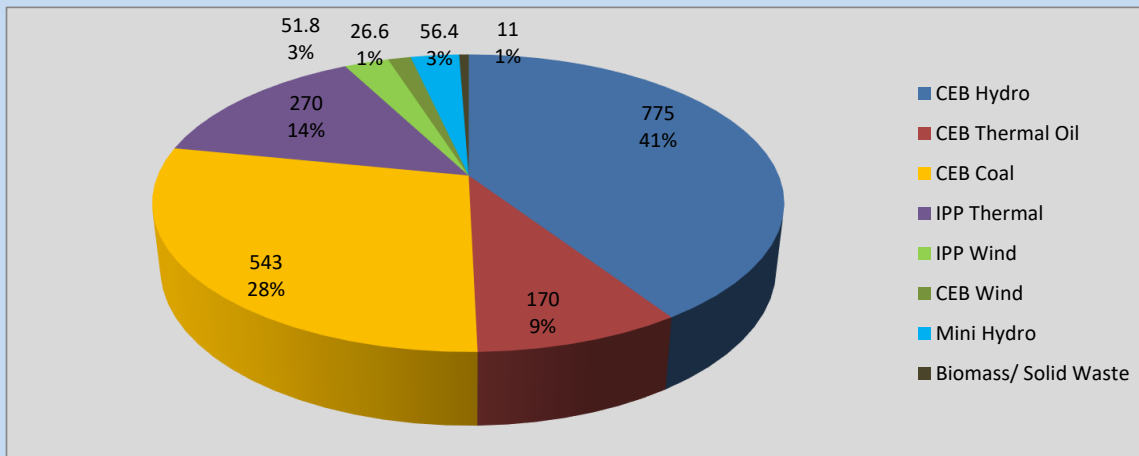
Plant	Installed Capacity	Plant Availability	Night peak Load	Plant Dispatch
	(MW)	(MW)	(MW)	(MWh)
Wimalasurendra	50	50	0	159
Old Laxapana	54	53	30	701
Canyon	60	60	50	525
New Laxapana	100	100	80	1,656
Polpitiya	90	90	56	1,292
Broadlands	35	35	17	308
Kotmale	201	201	0	780
Victoria	225	144	137	2,080
Randenigala	114	102	93	1,153
Rantambe	50	50	37	509
Ukuwela	37	36	37	529
Bowatenna	40	40	30	31
Upper Kotmale	150	150	94	1,078
Nilambe	3	2	2	14
Samanalawewa	120	120	120	998
Kukule	75	75	0	328
Inginiyagala	11	5	4	95
Udawalawe	6	2	4	55
Puttalam Coal I	270	270	274	6,464
Puttalam Coal II	270	0	0	0
Puttalam Coal III	270	270	269	6,526
KPS Small GTs	64	16	0	0
KPS GT 7	115	115	0	0
KCCP	161	155	0	0
Sapugaskanda A	70	51	47	1,109
Sapugaskanda B	70	63	63	1,520
Uthura Janani	26	24	0	247
Barge CEB	60	60	60	1,432
CEB-Thulhiriya	10	8	0	0
CEB-Kolonnawa	20	14	0	0
CEB-Mathugama	20	13	0	0
ACE Matara	24	0	0	0
Sojitz Kelanitissa	163	0	0	0
West Coast	270	270	270	6,356
ACE Embilipitiya	93	0	0	0
<b>Total</b>	<b>3,397</b>	<b>2,643</b>	<b>1,920</b>	<b>39,428</b>

Plant availability is the availability recorded at 6 am on

July 9, 2022

## Contribution to the Night Peak in MW

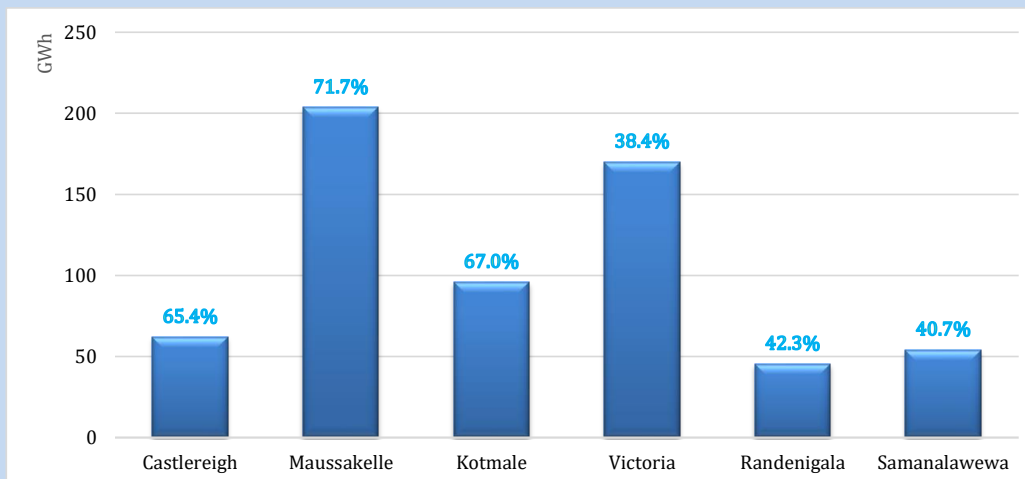
July 8, 2022



Night Peak*	1,903.4 MW
Day Peak	1,926.2 MW
Minimum Demand	1,308.0 MW

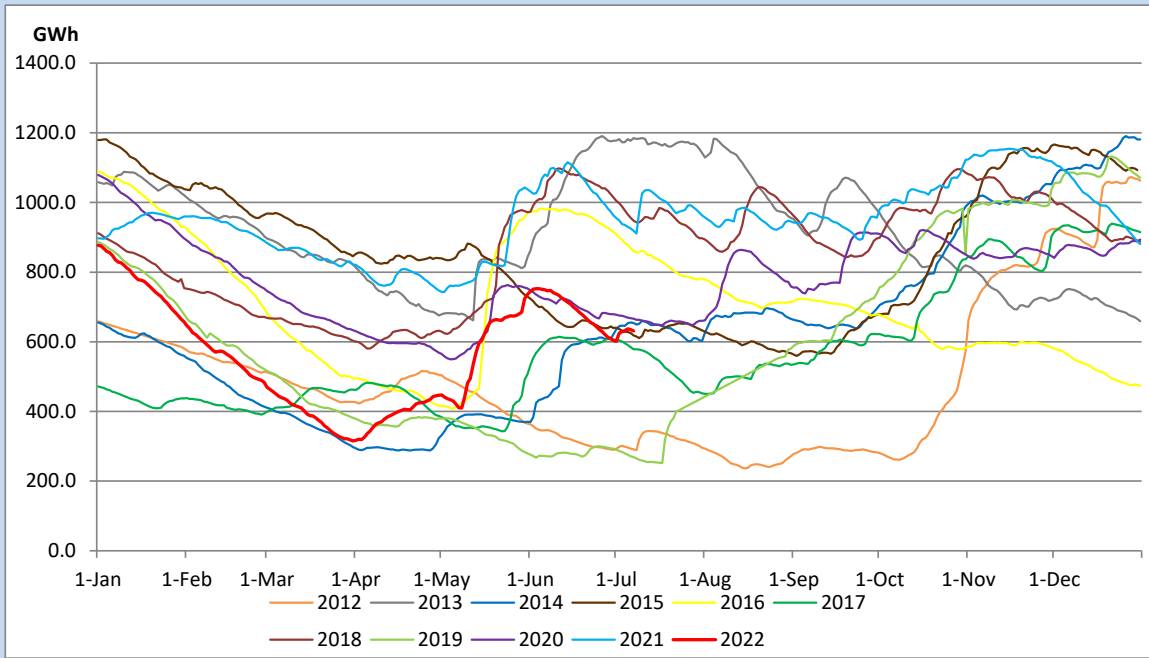
Above figures are excluding contribution from Roof Top Solar, 1MW solar, certain Wind plants and Mini Hydro plants

## Reservoir Levels - as at 06.00 Hr on July 9, 2022

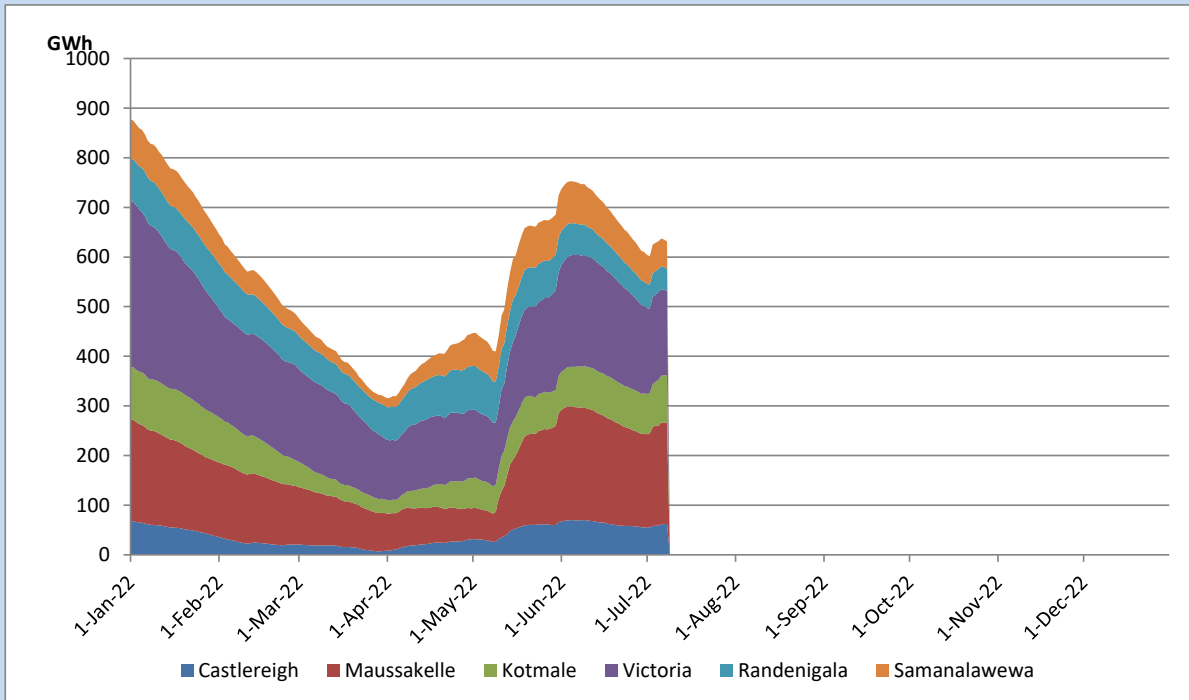


Total Reservoir Level	631.2 GWh
% of Total capacity	52.4%

## Comparison of Total Reservoir Storage Levels with Past Years

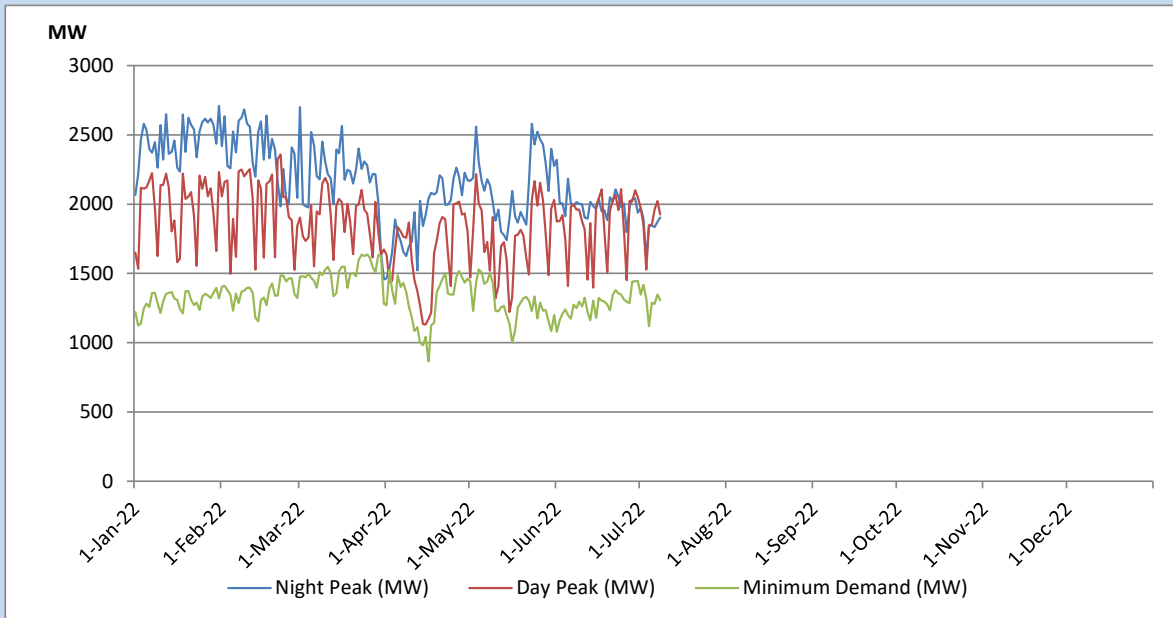


## Variation of Major Hydro Reservoir Levels in the current year (GWh)





## Variation of Demand during the current year

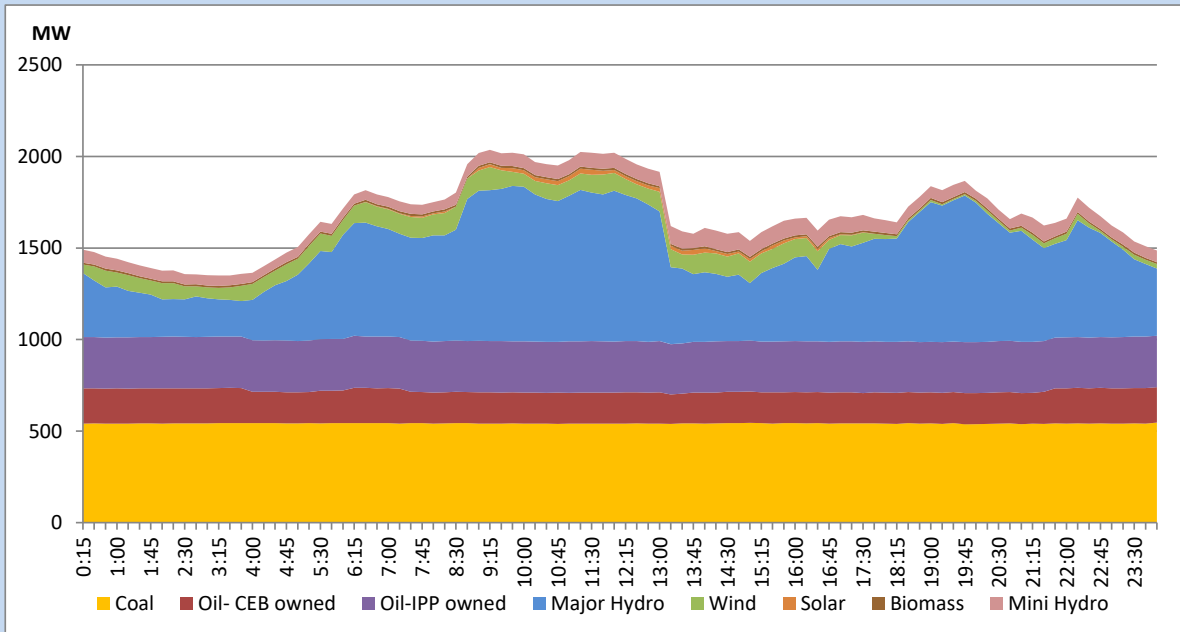


The above figures are excluding contribution from Roof Top Solar, 1MW solar, certain Wind plants and Mini Hydro plants

## Daily Load Curve of the Previous day

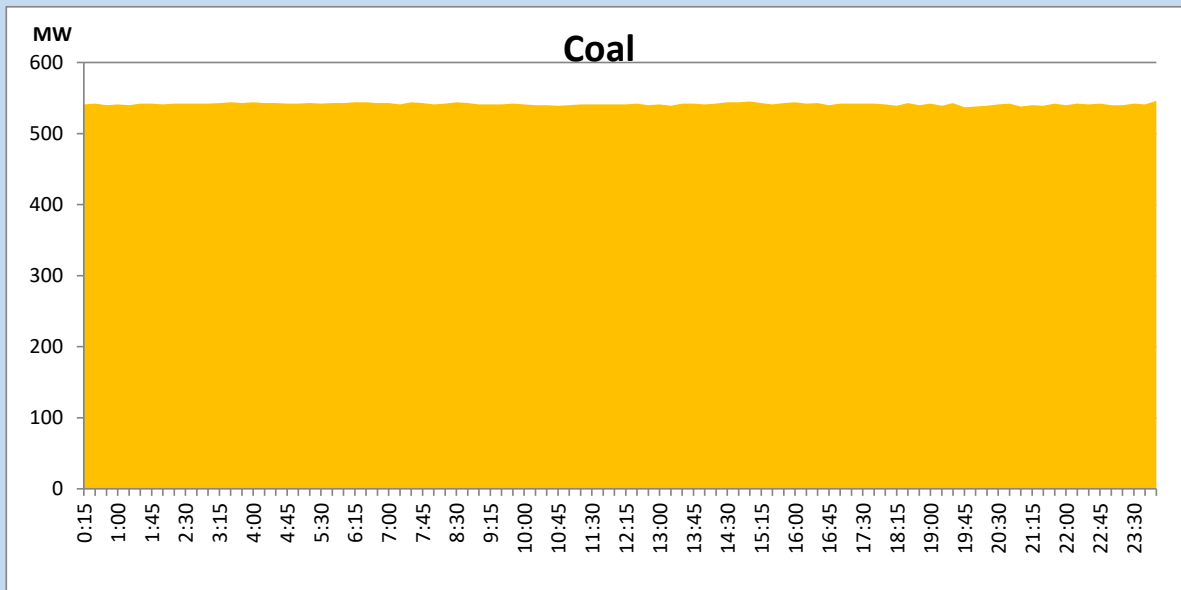
July 7, 2022

Solar and wind data is based on Telemetered Power Stations only



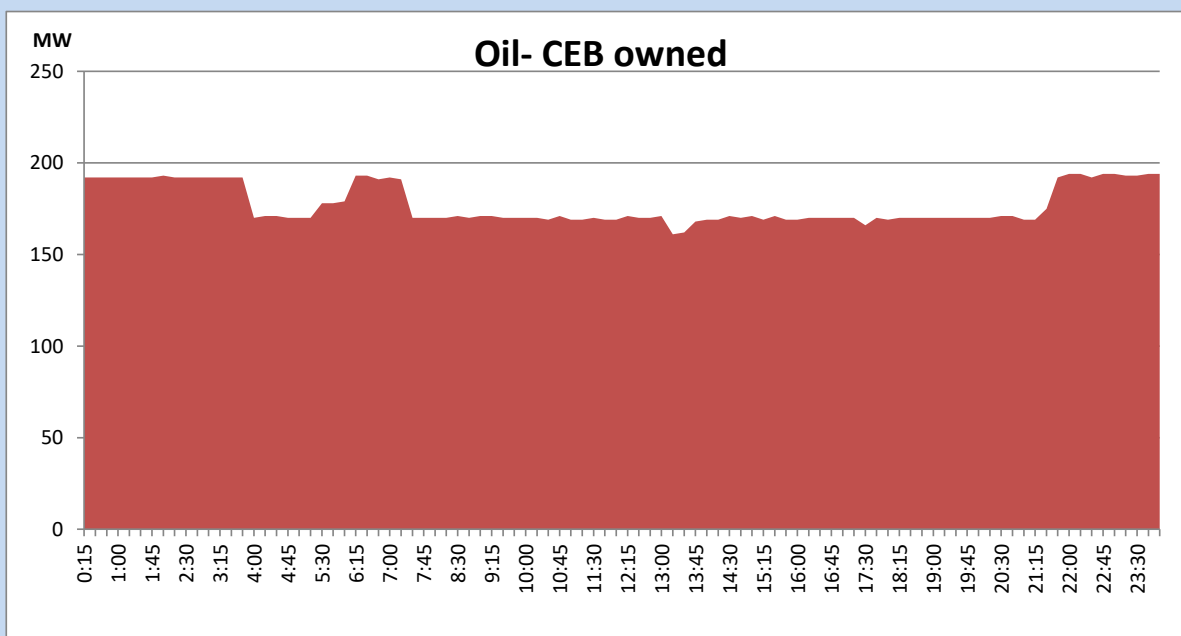
## Coal Generation during the Previous day

July 7, 2022



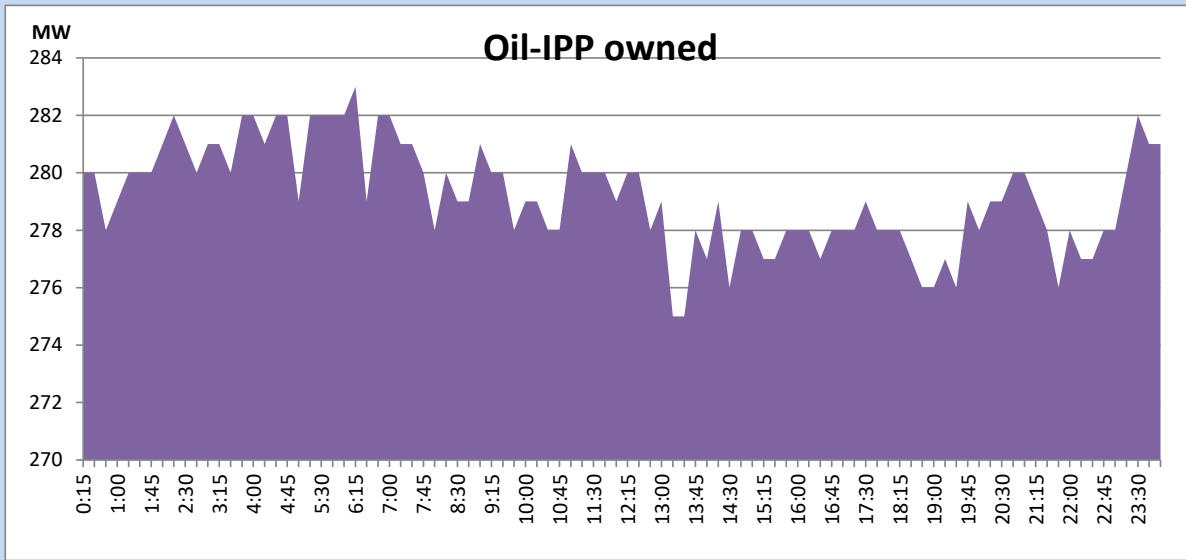
## CEB Oil Plant Generation during the Previous day

July 7, 2022



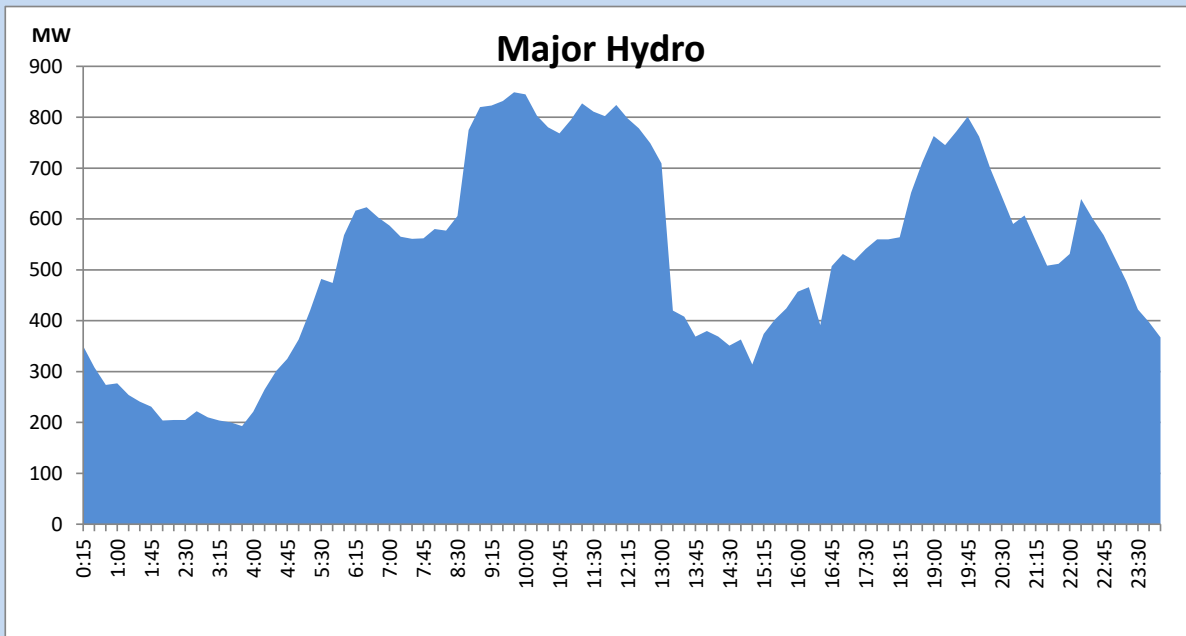
IPP Oil Plant Generation during the Previous day

July 7, 2022



Major Hydro Generation during the Previous day

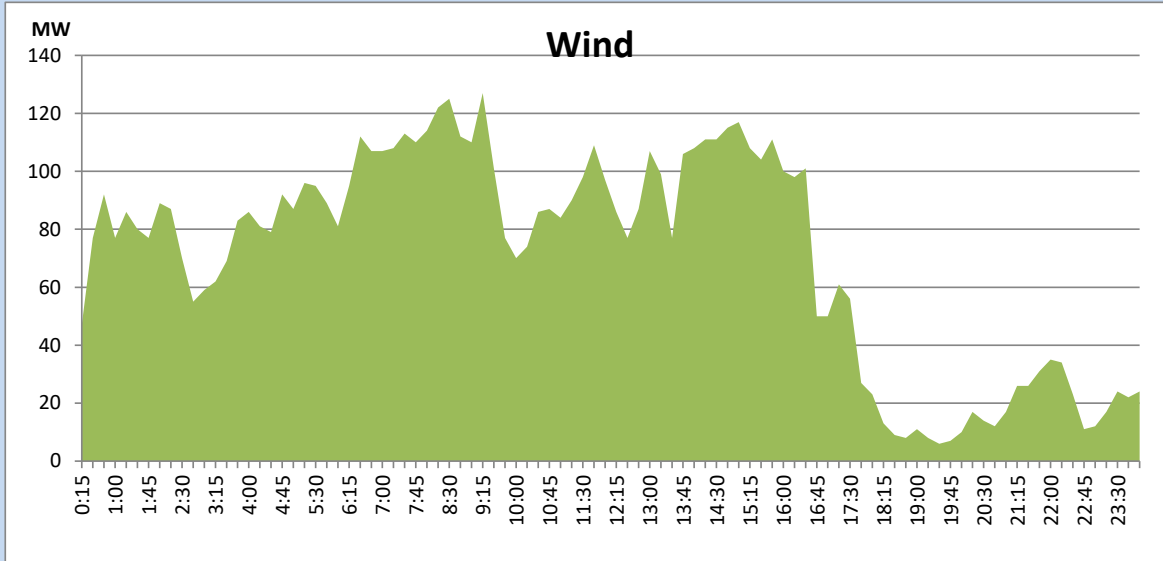
July 7, 2022



## Wind Generation during the Previous day

July 7, 2022

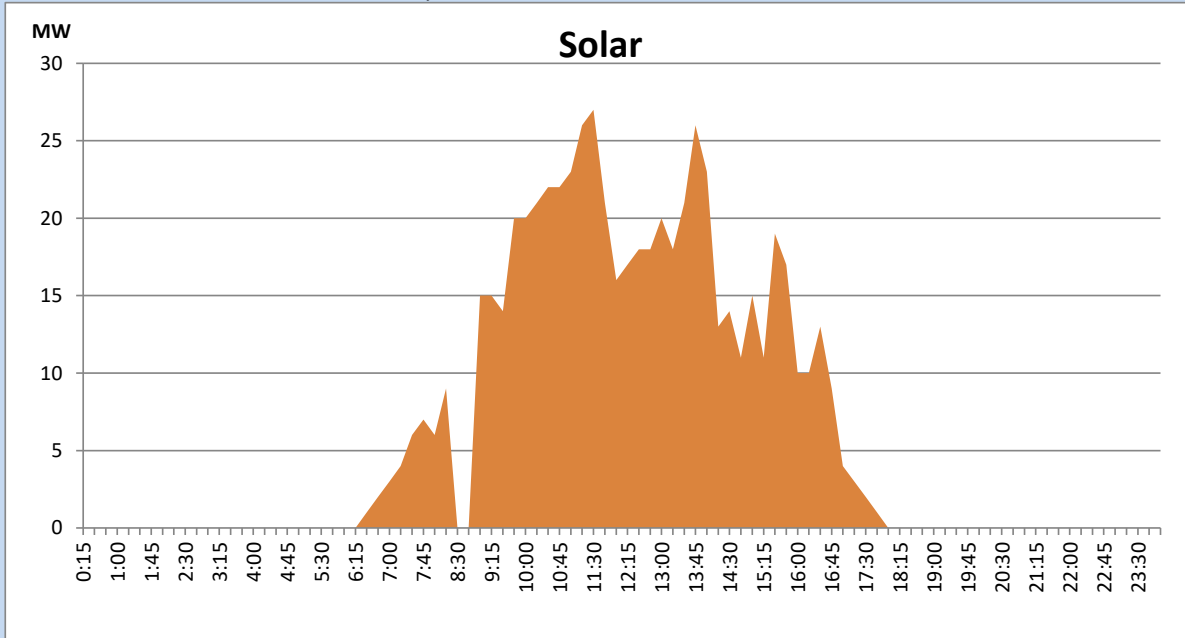
Based on Telemetered Power Stations only



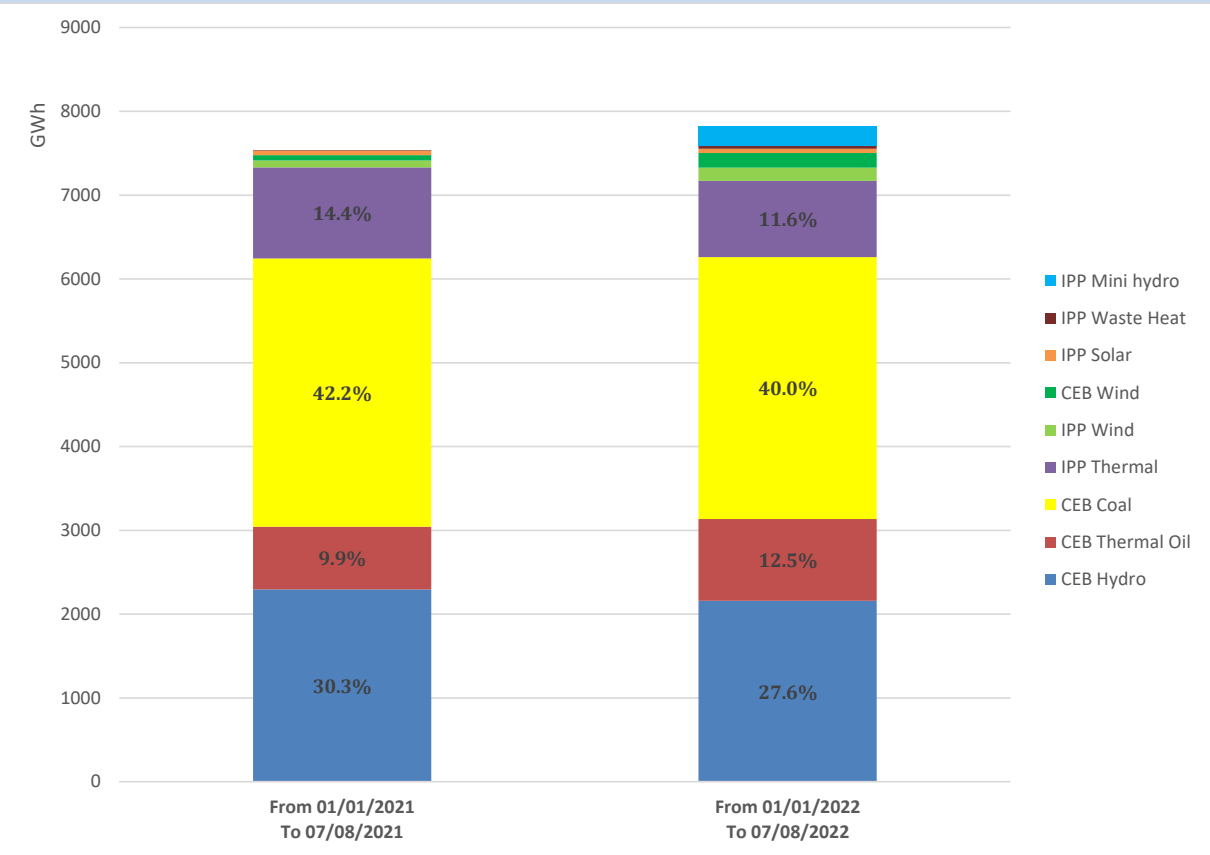
## Solar Generation during the Previous day

July 7, 2022

Based on Telemetered Power Stations only



# Cumulative Dispatch Comparison with Last Year



## Thermal Plant Fuel types

Power Station	Primary Fuel
CEB Thermal	
Sapugaskanda 1	Heavy Fuel
Sapugaskanda 2	Heavy Fuel
Kelanitissa Small Gas Turbines	Auto Diesel
GT 7 - Kelanitissa	Auto Diesel
Kelanitissa CCY	Naphtha or Diesel
Lakvijaya 1	Coal
Lakvijaya 2	Coal
Lakvijaya 3	Coal
Uthuru Janani	Heavy Fuel
Barge CEB	Heavy Fuel

Power Station	Primary Fuel
Private Thermal	
Sojitz - Kelanitissa	Auto Diesel
West Coast	Auto Diesel / Heavy Fuel
ACE Matara	Heavy Fuel
ACE Embilipitiya	Heavy Fuel

Major Incidents during the day -as reported by CEB morning of

July 9, 2022

- 1) Rotational manual load shedding carried out from 05:30 hrs to 08:30 hrs and 13:00hrs to 22:00hrs.