

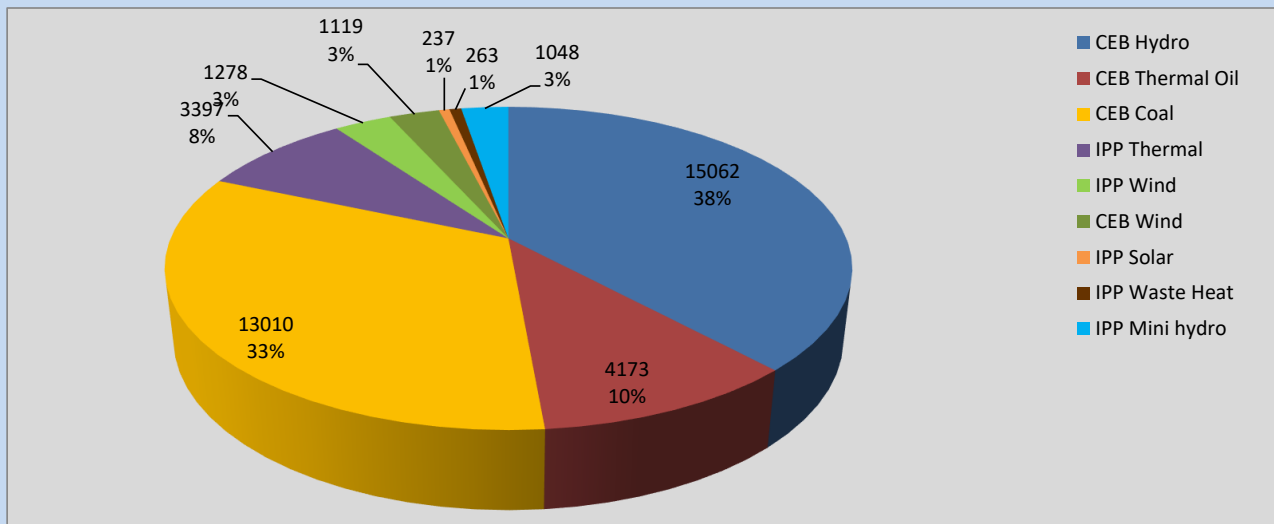
Generation and Reservoirs Statistics

July 6, 2022



PUBLIC UTILITIES COMMISSION OF SRI LANKA

Daily Generation Mix in MWh



Total Generation **39,587 MWh**

Note: Above data is excluding contribution from Roof Top Solar, 1MW Solar and certain Mini Hydro plants

Cumulative Dispatch

Note: Following data is Excluding contribution from Roof Top Solar, 1MW solar and Mini Hydro plants

For Current Month

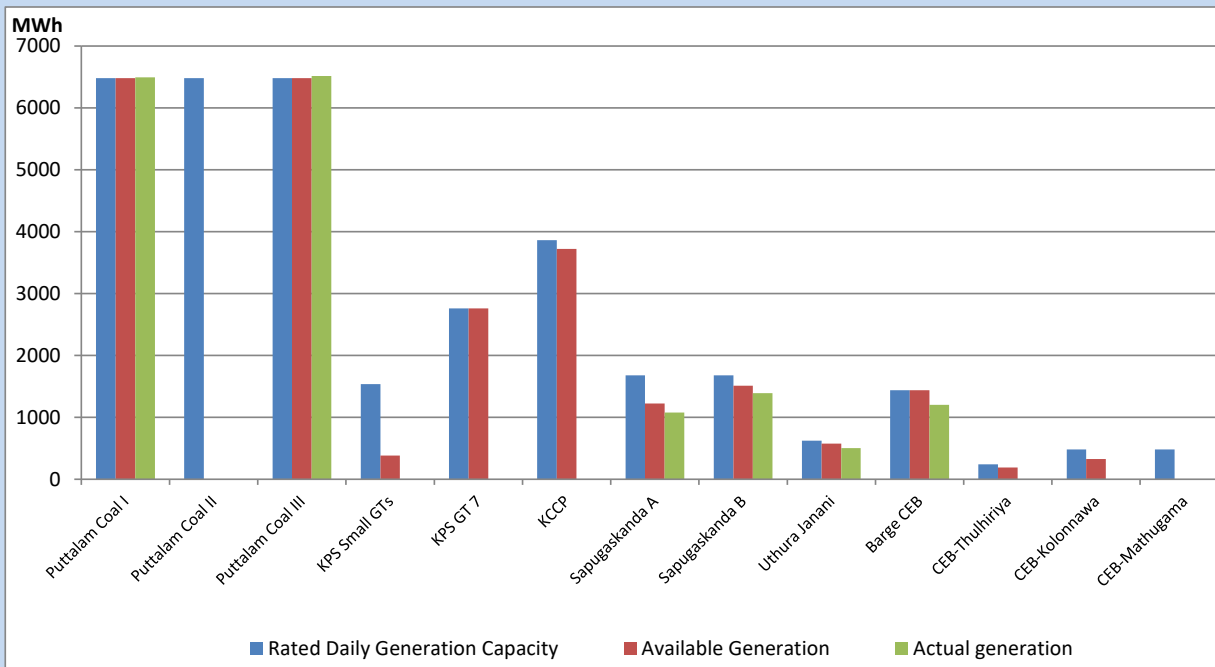
Category	Dispatch (GWh)	Percentage
CEB Hydro	82.25	35.48%
CEB Thermal Oil	27.54	11.88%
CEB Coal	70.89	30.58%
IPP Thermal	24.65	10.63%
SPP Wind	7.25	3.13%
CEB Wind	7.14	3.08%
SPP Solar	1.62	0.70%
SPP Solid Waste	1.51	0.65%
Mini Hydro	8.98	3.87%
Total	231.83	

For Current Year

Category	Dispatch (GWh)	Percentage
CEB Hydro	2,133.6	27.57%
CEB Thermal Oil	967.7	12.50%
CEB Coal	3,099.1	40.04%
IPP Thermal	896.2	11.58%
SPP Wind	157.2	2.03%
CEB Wind	173.0	2.24%
SPP Solar	48.1	0.62%
SPP Solid Waste	40.0	0.52%
Mini Hydro	224.6	2.90%
Total	7,739.2	

CEB owned Thermal Plant Dispatch

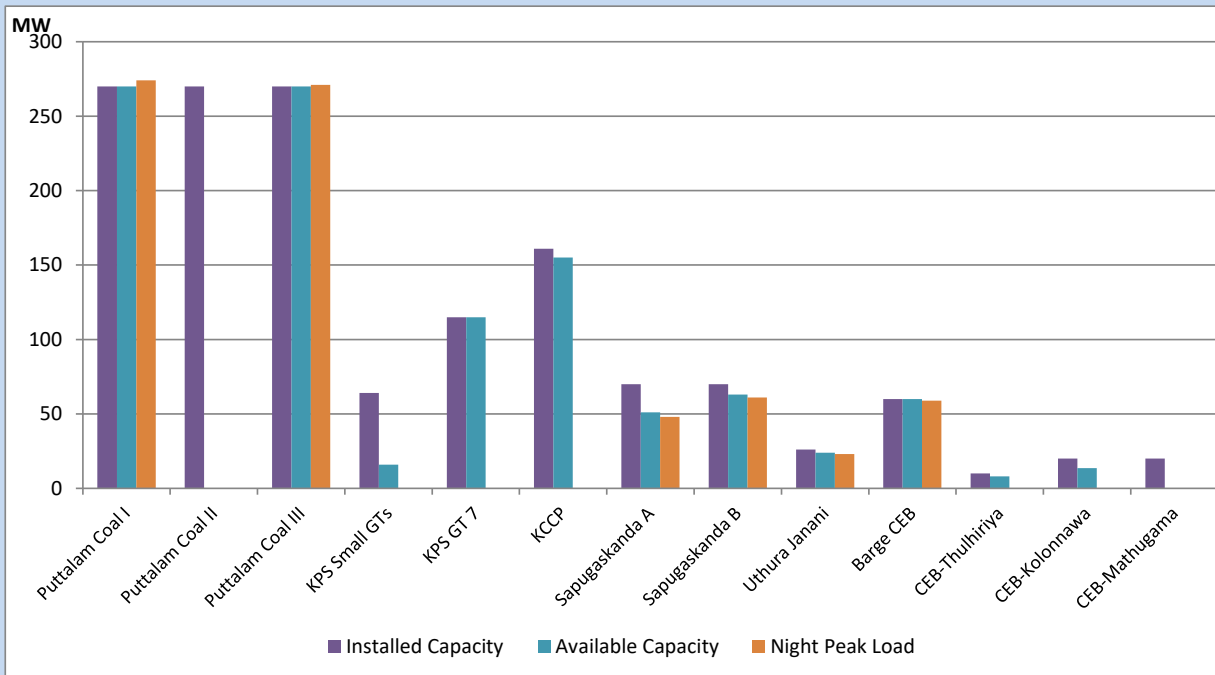
July 6, 2022



Available Generation is estimated based on plant availability at 6.00am on

July 7, 2022

CEB owned Thermal Plant Loading at the Night Peak



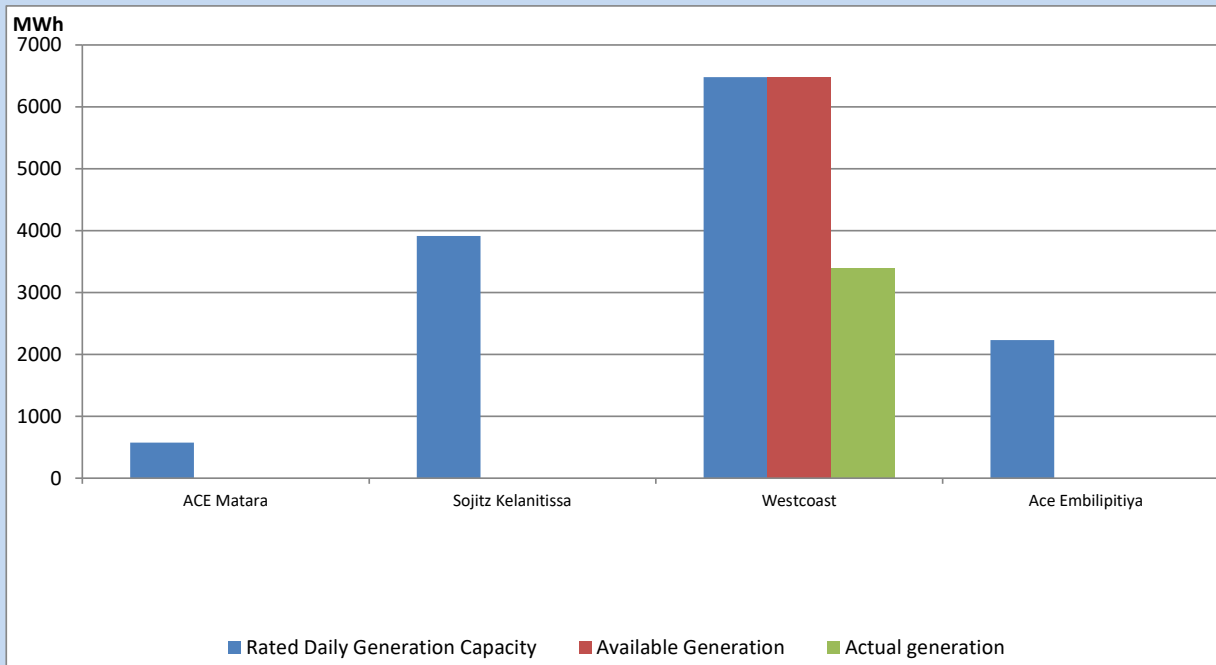
Note- Plant availability is recorded at 6.00 am on

July 7, 2022

IPP owned Thermal Plant Dispatch

July 6, 2022

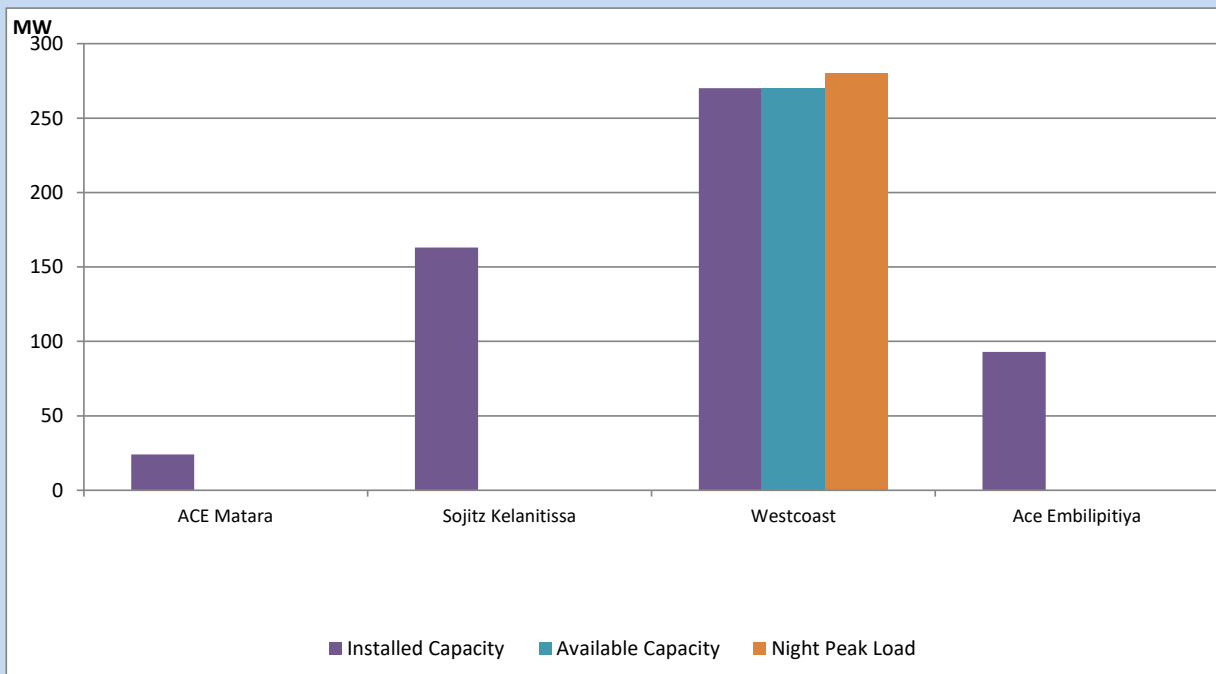
Asia Power, V Power Pallekale, Vpower Galle, V Power Horana, Vpower Hambantota, Vpower Valachchena and Altaqa Mahiyanganaya are not available due to expiration of PPAs



Available Generation is estimated based on plant availability at 6.00am on

July 7, 2022

IPP owned Thermal Plant Loading at the Night Peak

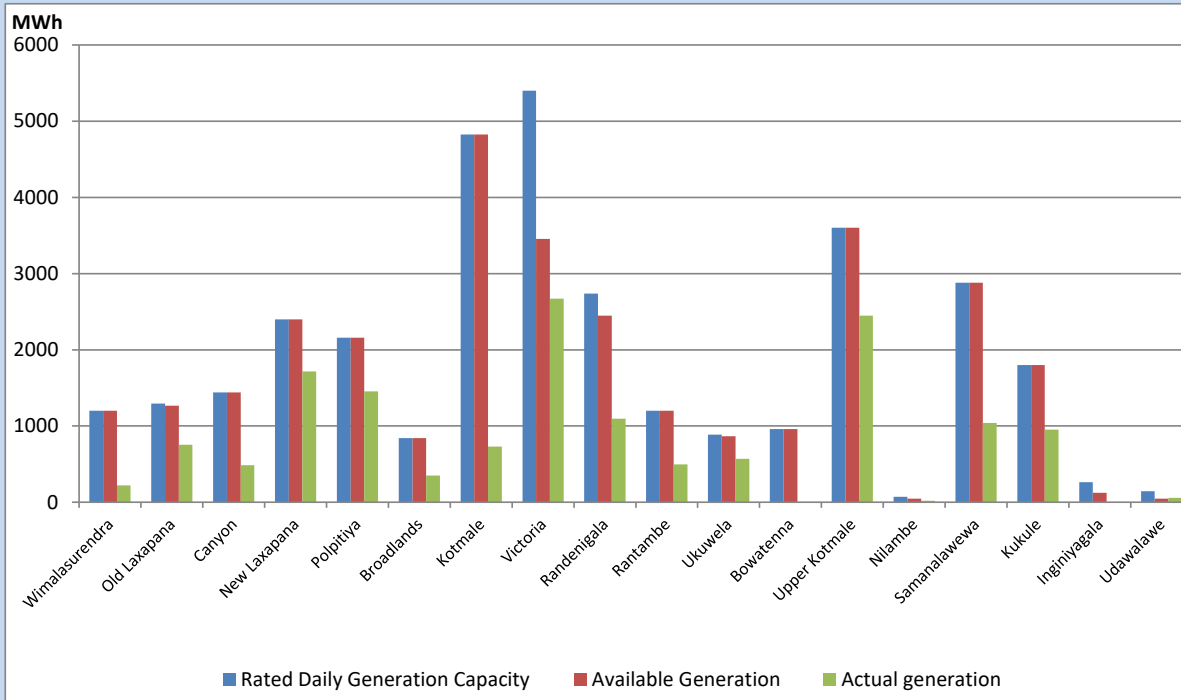


Note- Plant availability is recorded at 6.00 am on

July 7, 2022

Major Hydro Plant Dispatch

July 6, 2022

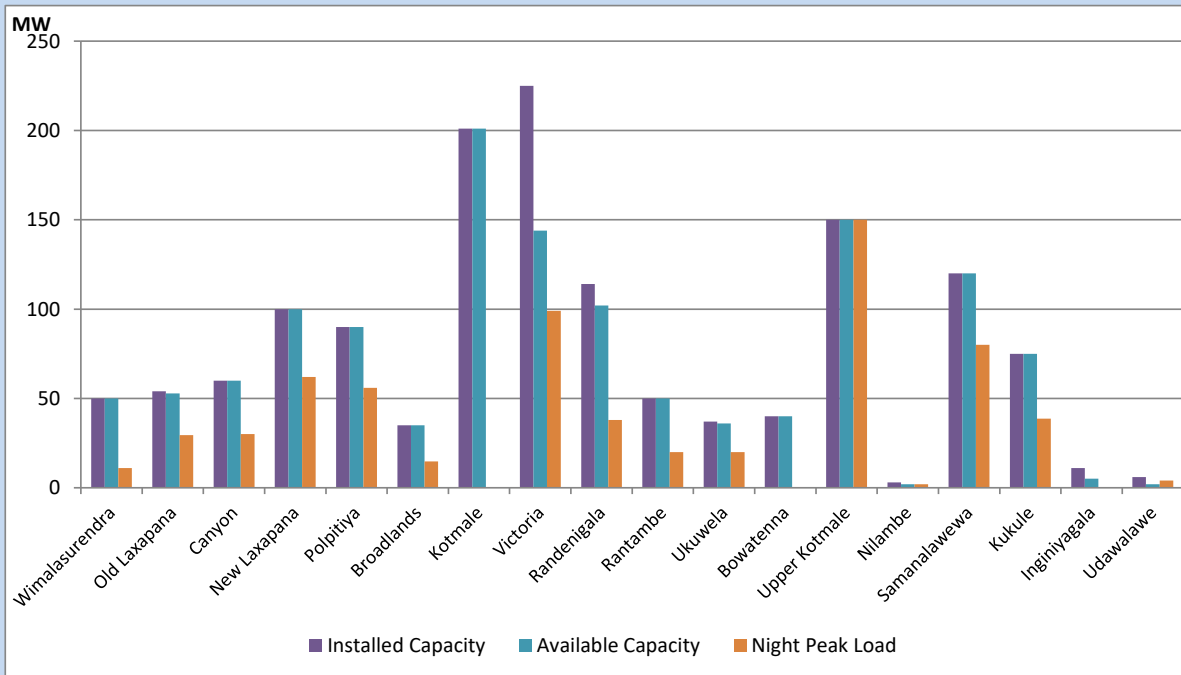


Available Generation is estimated based on plant availability at 6.00am on
Broadlands power plant is operating in the Commissioning Stage

July 7, 2022

Major Hydro Plant Loading at Night Peak

July 6, 2022



Note- Plant availability is recorded at 6.00 am on
Broadlands power plant is operating in the Commissioning Stage

July 7, 2022

Summary of Major Plant performance

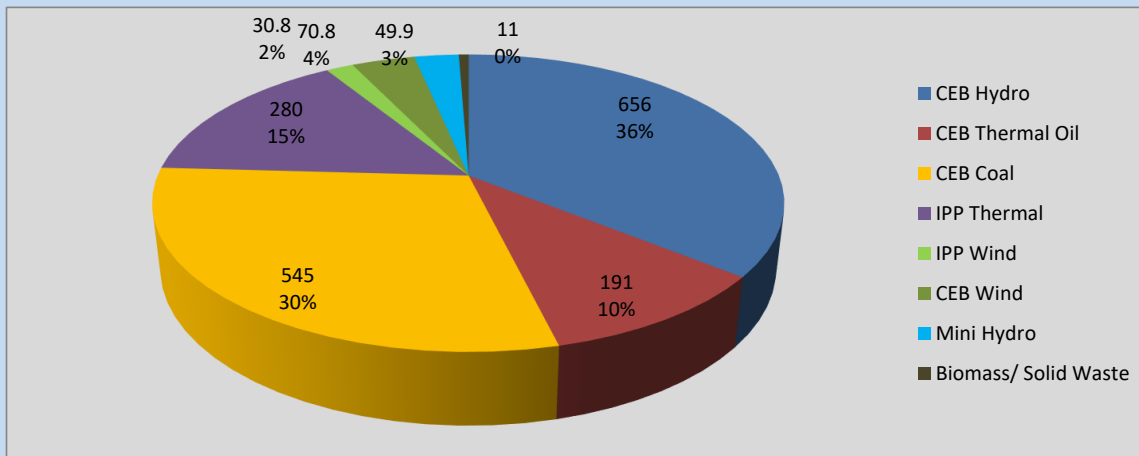
Plant	Installed Capacity	Plant Availability	Night peak Load	Plant Dispatch
	(MW)	(MW)	(MW)	(MWh)
Wimalasurendra	50	50	11	220
Old Laxapana	54	53	30	755
Canyon	60	60	30	485
New Laxapana	100	100	62	1,717
Polpitiya	90	90	56	1,456
Broadlands	35	35	15	351
Kotmale	201	201	0	730
Victoria	225	144	99	2,671
Randenigala	114	102	38	1,096
Rantambe	50	50	20	496
Ukuwela	37	36	20	568
Bowatenna	40	40	0	0
Upper Kotmale	150	150	150	2,448
Nilambe	3	2	2	20
Samanalawewa	120	120	80	1,041
Kukule	75	75	39	952
Inginiyagala	11	5	0	0
Udawalawe	6	2	4	56
Puttalam Coal I	270	270	274	6,495
Puttalam Coal II	270	0	0	0
Puttalam Coal III	270	270	271	6,515
KPS Small GTs	64	16	0	0
KPS GT 7	115	115	0	0
KCCP	161	155	0	0
Sapugaskanda A	70	51	48	1,079
Sapugaskanda B	70	63	61	1,390
Uthura Janani	26	24	23	503
Barge CEB	60	60	59	1,201
CEB-Thulhiriya	10	8	0	0
CEB-Kolonnawa	20	14	0	0
CEB-Mathugama	20	0	0	0
ACE Matara	24	0	0	0
Sojitz Kelanitissa	163	0	0	0
West Coast	270	270	280	3,397
ACE Embilipitiya	93	0	0	0
Total	3,397	2,631	1,834	39,587

Plant availability is the availability recorded at 6 am on

July 7, 2022

Contribution to the Night Peak in MW

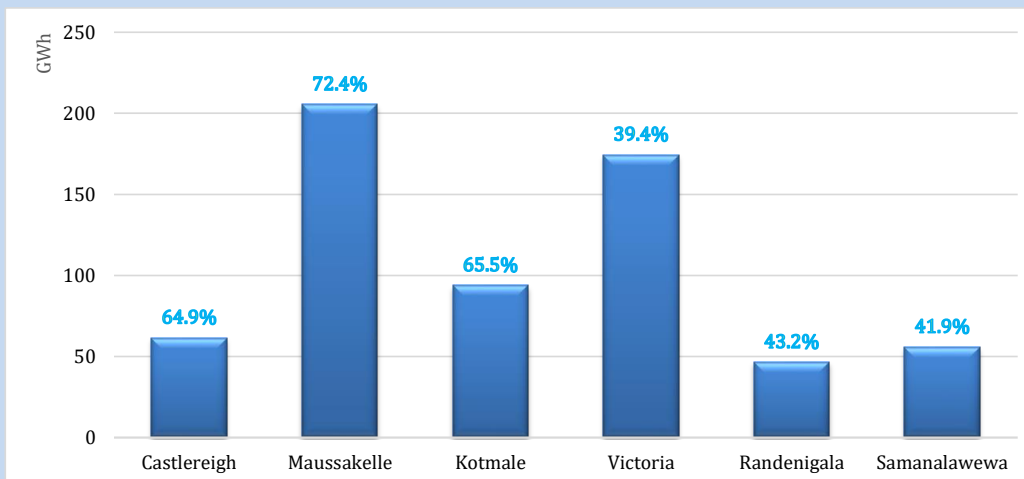
July 6, 2022



Night Peak*	1,834.5 MW
Day Peak	1,960.5 MW
Minimum Demand	1,280.3 MW

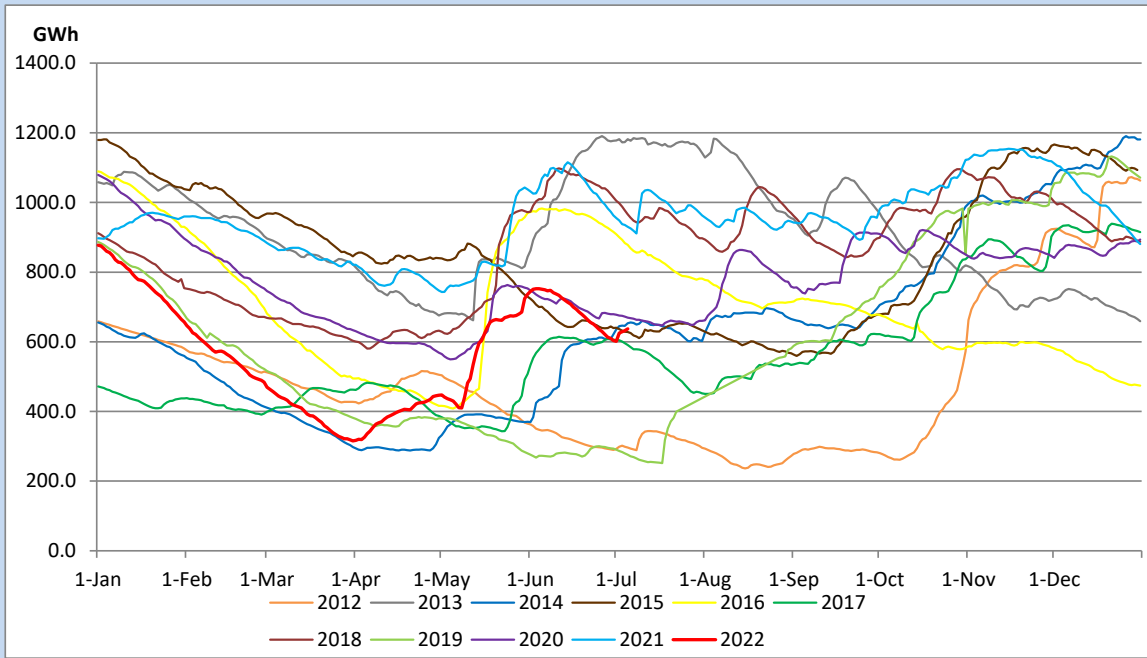
Above figures are excluding contribution from Roof Top Solar, 1MW solar, certain Wind plants and Mini Hydro plants

Reservoir Levels - as at 06.00 Hr on July 7, 2022

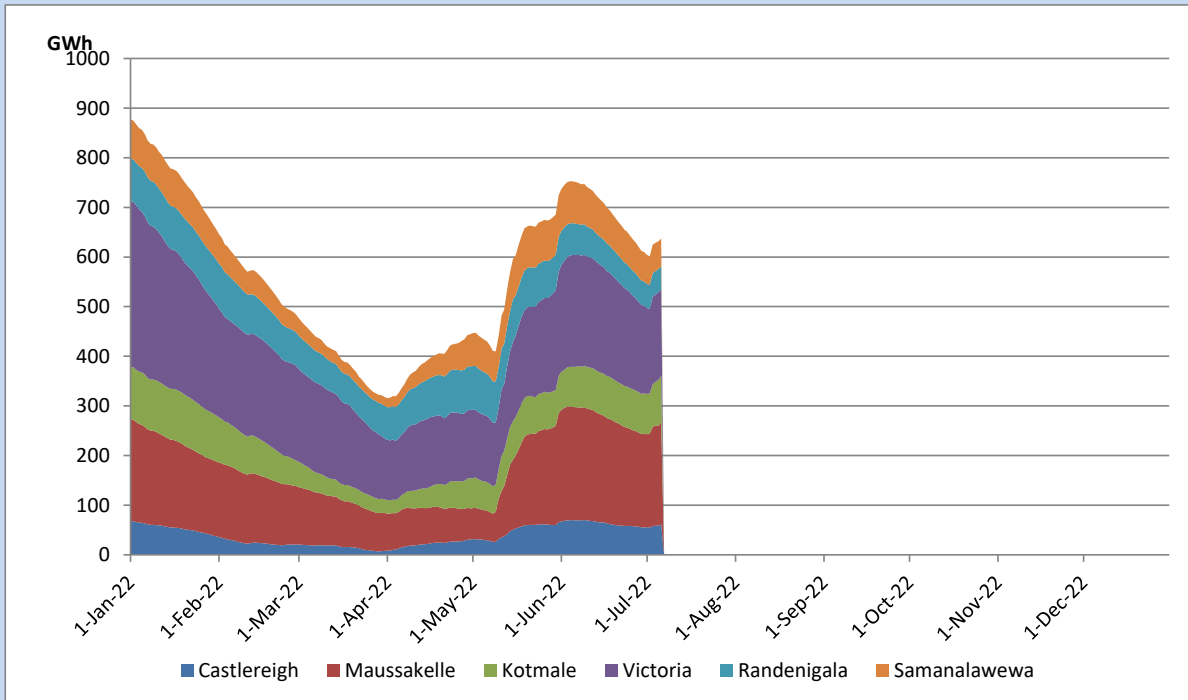


Total Reservoir Level	637.3 GWh
% of Total capacity	52.9%

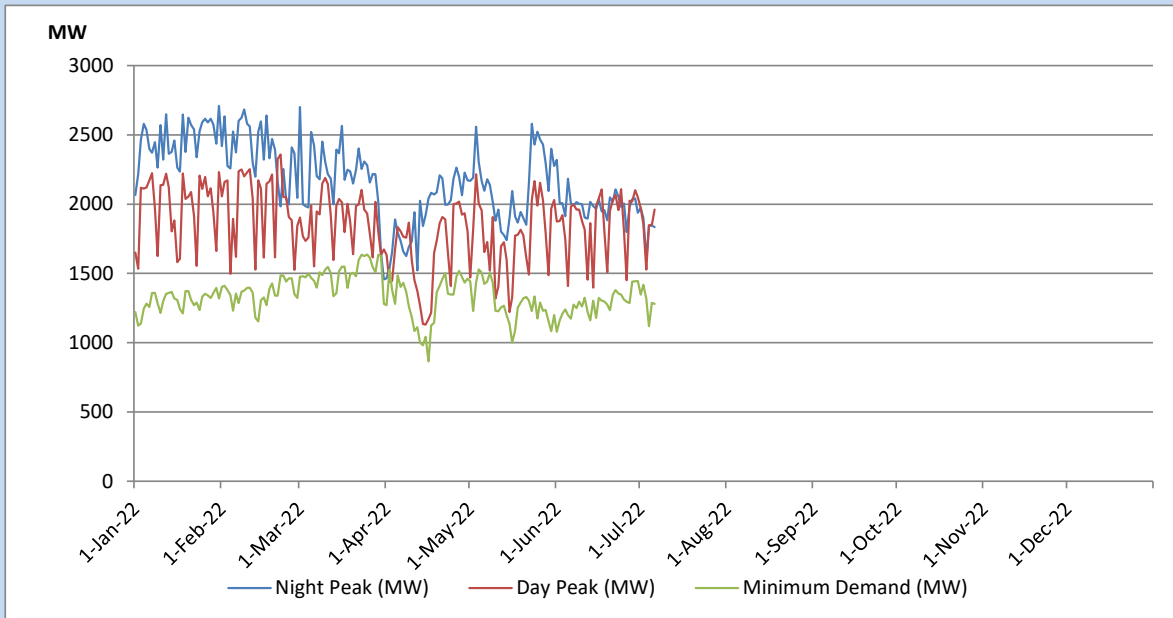
Comparison of Total Reservoir Storage Levels with Past Years



Variation of Major Hydro Reservoir Levels in the current year (GWh)



Variation of Demand during the current year

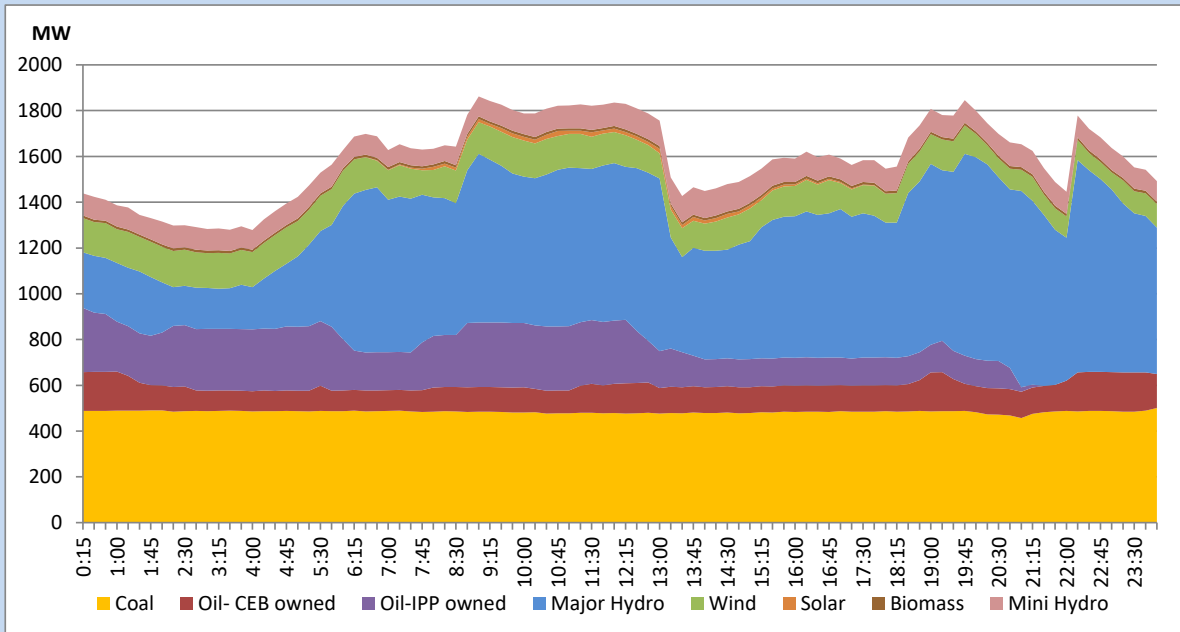


The above figures are excluding contribution from Roof Top Solar, 1MW solar, certain Wind plants and Mini Hydro plants

Daily Load Curve of the Previous day

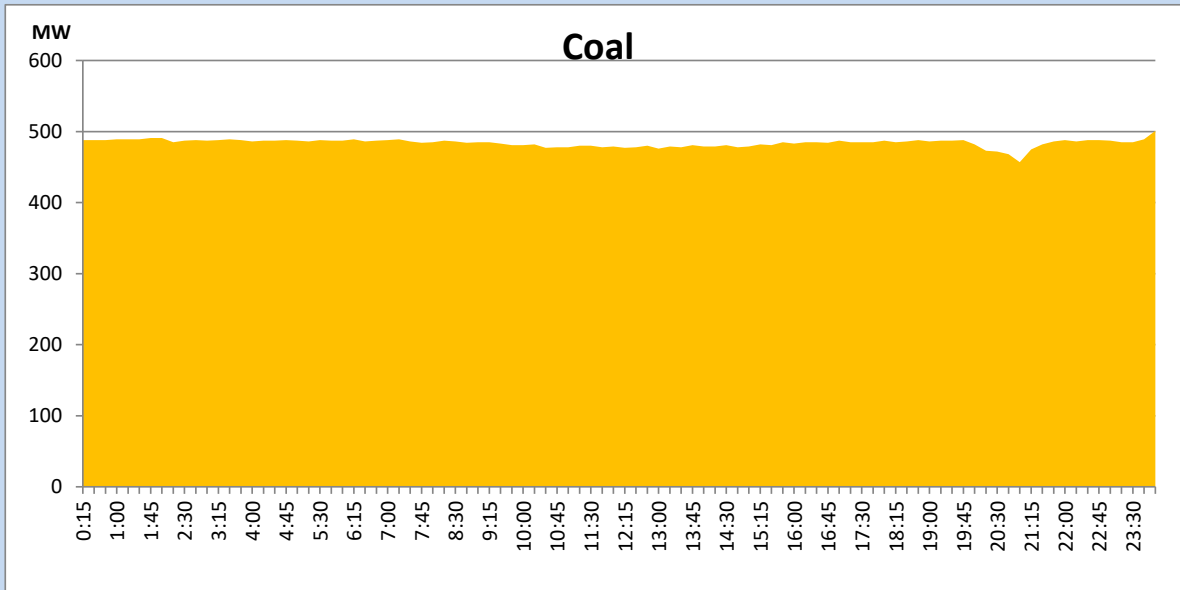
July 5, 2022

Solar and wind data is based on Telemetered Power Stations only



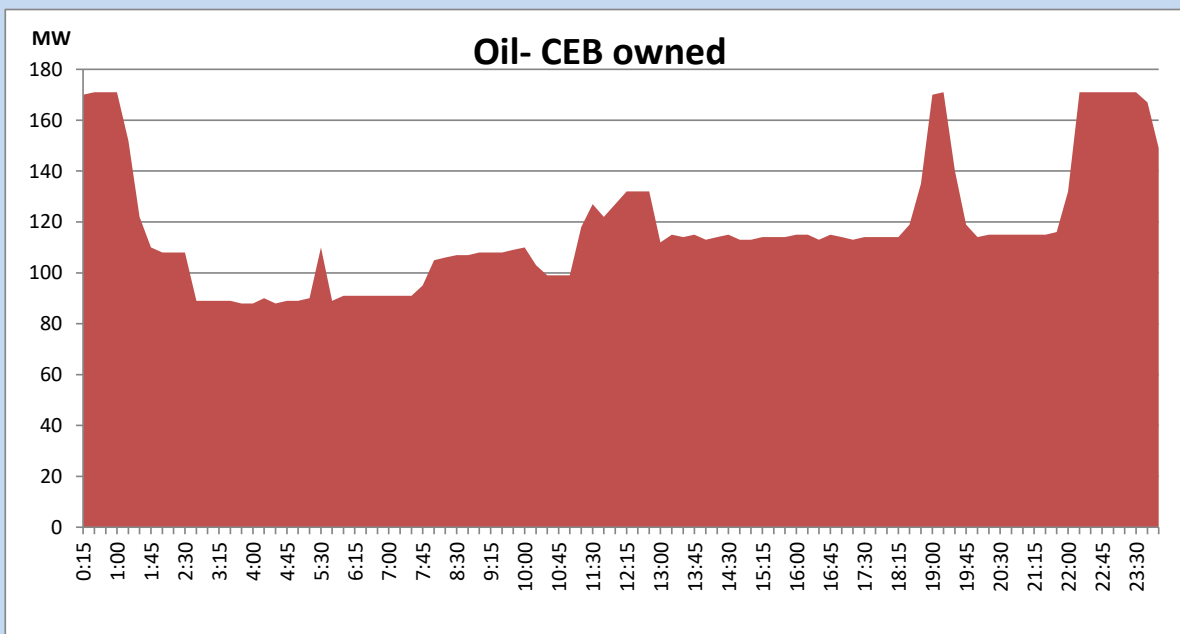
Coal Generation during the Previous day

July 5, 2022



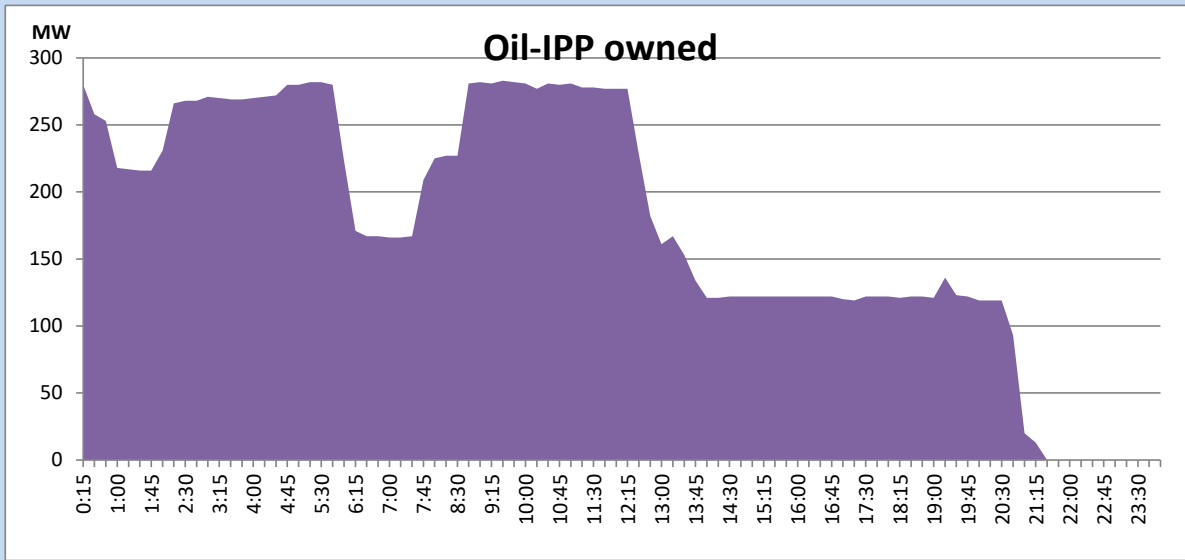
CEB Oil Plant Generation during the Previous day

July 5, 2022



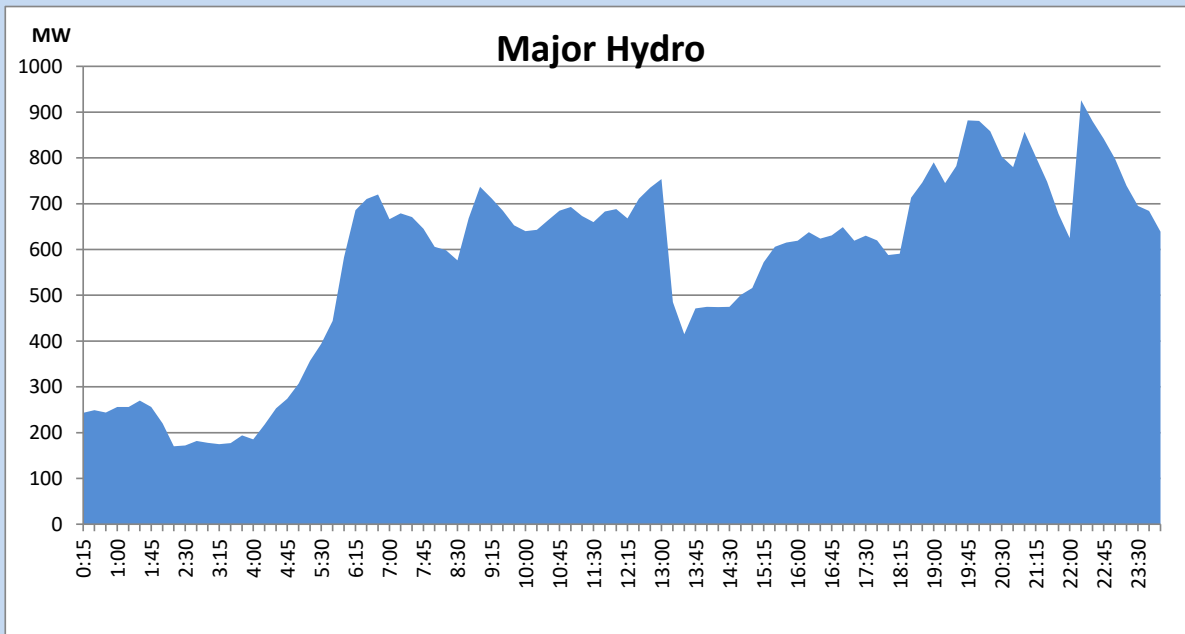
IPP Oil Plant Generation during the Previous day

July 5, 2022



Major Hydro Generation during the Previous day

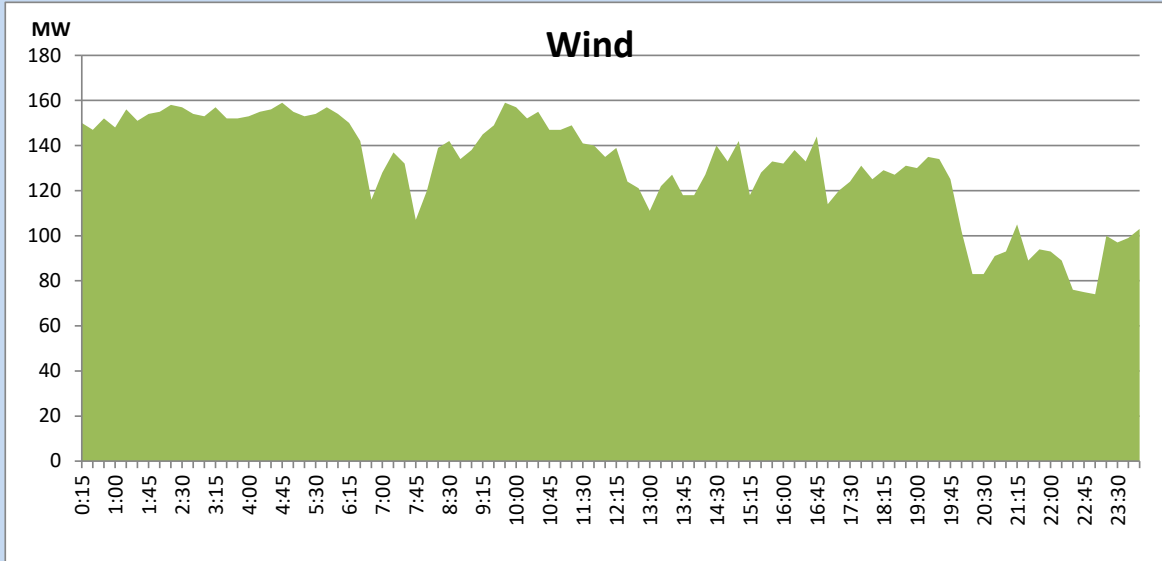
July 5, 2022



Wind Generation during the Previous day

July 5, 2022

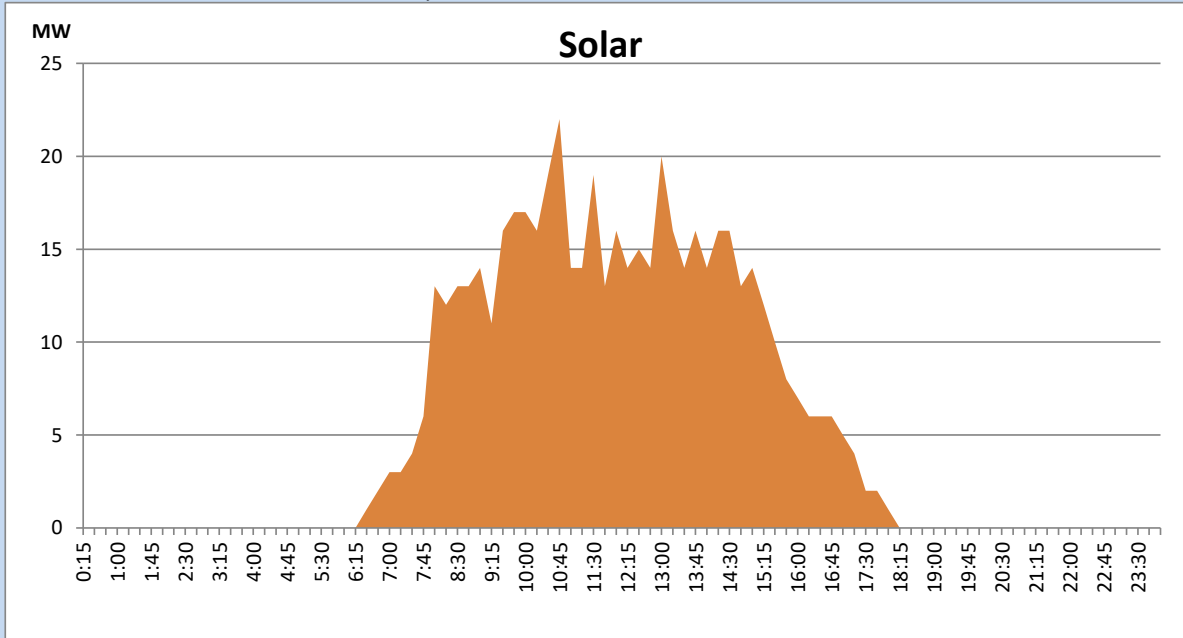
Based on Telemetered Power Stations only



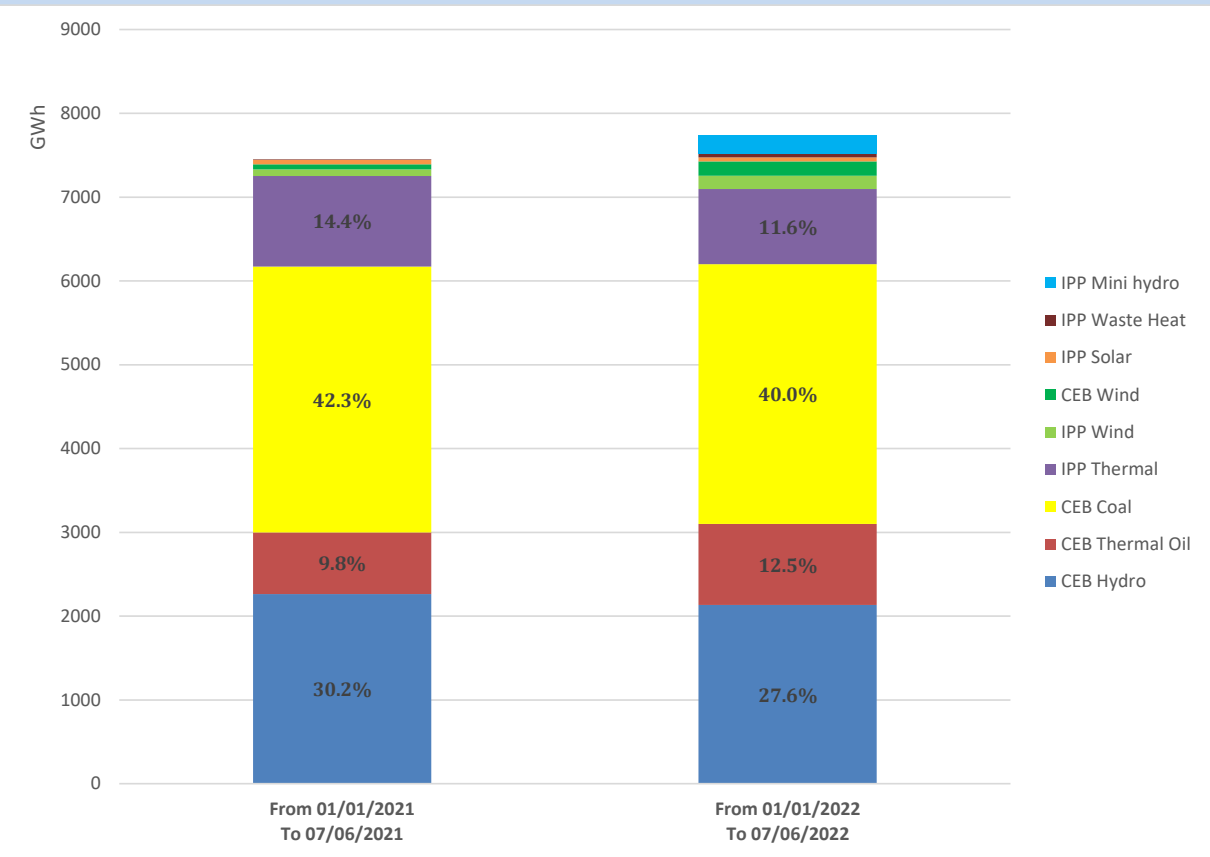
Solar Generation during the Previous day

July 5, 2022

Based on Telemetered Power Stations only



Cumulative Dispatch Comparison with Last Year



Thermal Plant Fuel types

Power Station	Primary Fuel
CEB Thermal	
Sapugaskanda 1	Heavy Fuel
Sapugaskanda 2	Heavy Fuel
Kelanitissa Small Gas Turbines	Auto Diesel
GT 7 - Kelanitissa	Auto Diesel
Kelanitissa CCY	Naphtha or Diesel
Lakvijaya 1	Coal
Lakvijaya 2	Coal
Lakvijaya 3	Coal
Uthuru Janani	Heavy Fuel
Barge CEB	Heavy Fuel

Power Station	Primary Fuel
Private Thermal	
Sojitz - Kelanitissa	Auto Diesel
West Coast	Auto Diesel / Heavy Fuel
ACE Matara	Heavy Fuel
ACE Embilipitiya	Heavy Fuel

Major Incidents during the day -as reported by CEB morning of

July 7, 2022

- 1) Rotational manual load shedding carried out from 05:30 hrs to 08:30 hrs and 13:00hrs to 22:00hrs.
- 2) Matara - Embilipitiya cct tripped from both ends due to the operation of distance protection at 06:09hrs and the cct restored at 09:19hrs.
- 3) U/Kothmale Unit 02 tripped at 13:29hrs rejecting 40MW from system due to the governor pressure pump malfunction and the m/c resumed generation at 15:43hrs.
- 4) Kelanitissa GSS 220/132 kV T/F 01 tripped at 16:35hrs due to the operation of differential protection while attempting to switch ON after releasing to get the OLTC oil samples and the T/F normalized at 23:53hrs.