

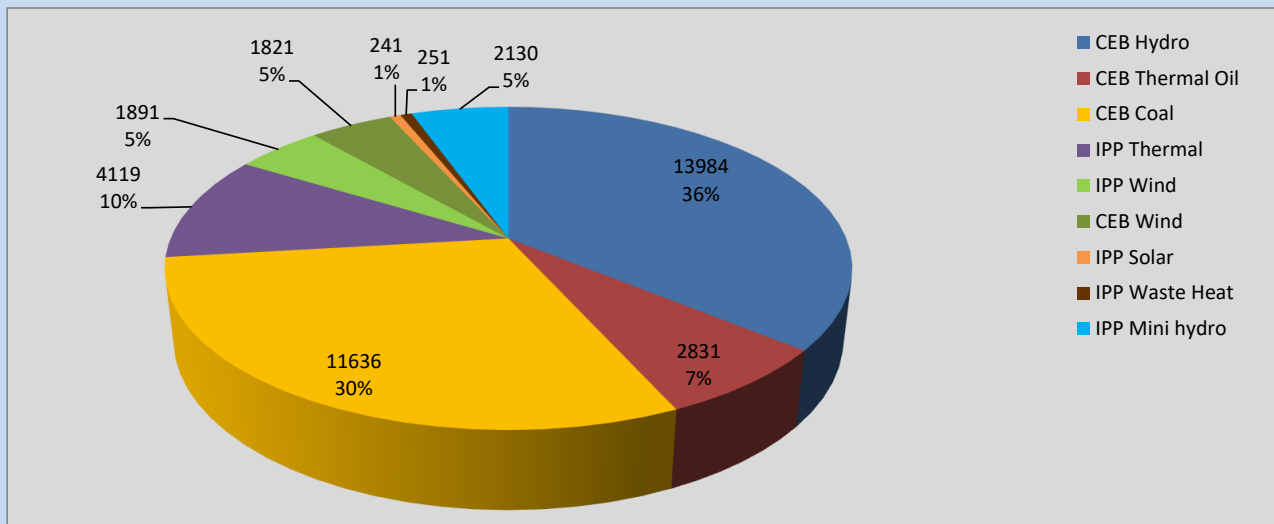
# Generation and Reservoirs Statistics

July 5, 2022



PUBLIC UTILITIES COMMISSION OF SRI LANKA

## Daily Generation Mix in MWh



**Total Generation 38,904 MWh**

Note: Above data is excluding contribution from Roof Top Solar, 1MW Solar and certain Mini Hydro plants

## Cumulative Dispatch

Note: Following data is Excluding contribution from Roof Top Solar, 1MW solar and Mini Hydro plants

### For Current Month

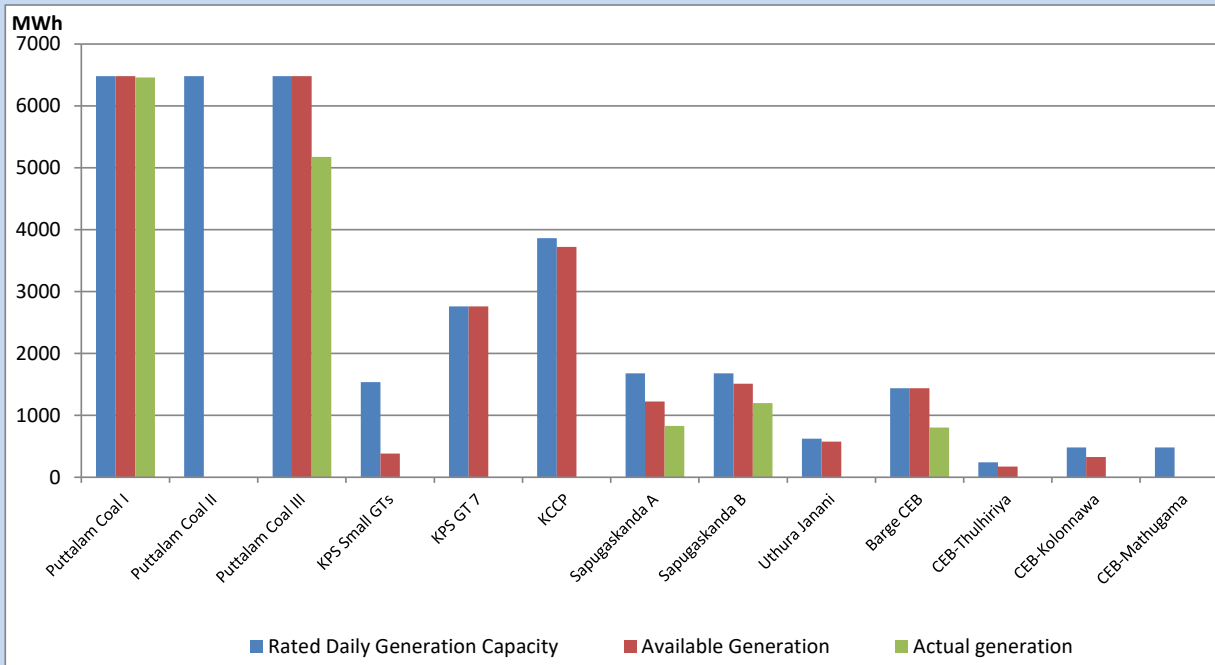
Category	Dispatch (GWh)	Percentage
CEB Hydro	67.19	34.95%
CEB Thermal Oil	23.37	12.16%
CEB Coal	57.88	30.11%
IPP Thermal	21.25	11.05%
SPP Wind	5.97	3.11%
CEB Wind	6.02	3.13%
SPP Solar	1.38	0.72%
SPP Solid Waste	1.25	0.65%
Mini Hydro	7.93	4.13%
<b>Total</b>	<b>192.24</b>	

### For Current Year

Category	Dispatch (GWh)	Percentage
CEB Hydro	2,118.5	27.51%
CEB Thermal Oil	963.5	12.51%
CEB Coal	3,086.1	40.08%
IPP Thermal	892.8	11.60%
SPP Wind	155.9	2.02%
CEB Wind	171.9	2.23%
SPP Solar	47.8	0.62%
SPP Solid Waste	39.7	0.52%
Mini Hydro	223.5	2.90%
<b>Total</b>	<b>7,699.6</b>	

## CEB owned Thermal Plant Dispatch

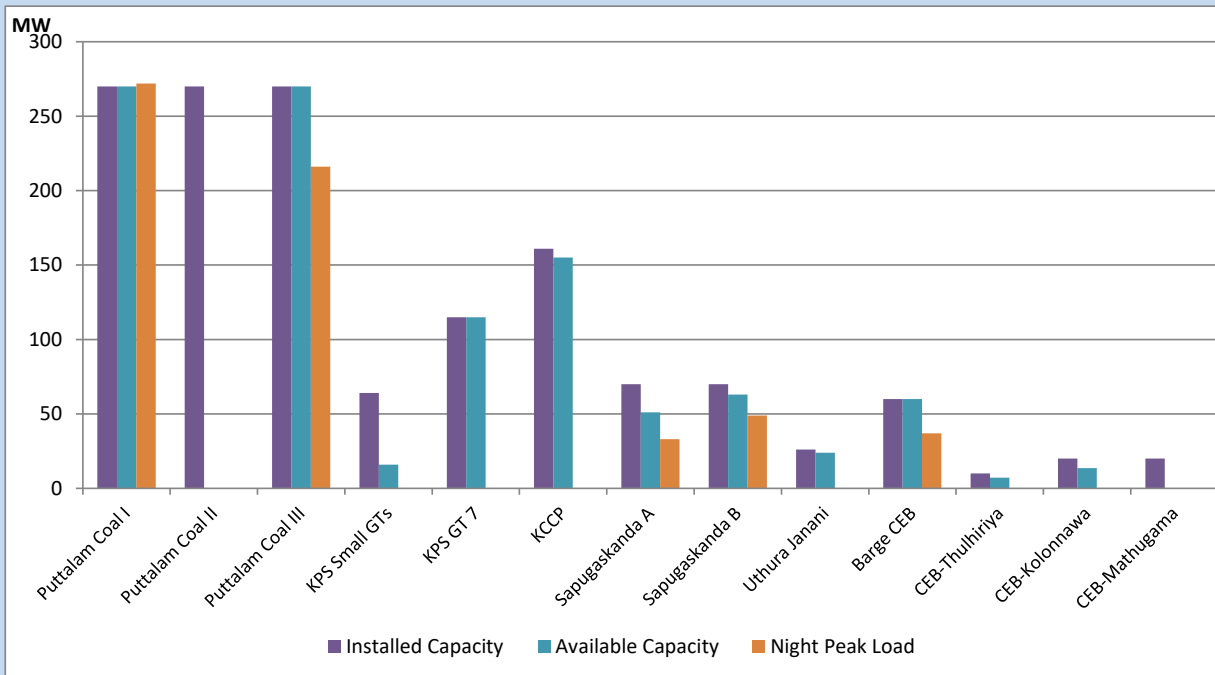
July 5, 2022



Available Generation is estimated based on plant availability at 6.00am on

July 6, 2022

## CEB owned Thermal Plant Loading at the Night Peak



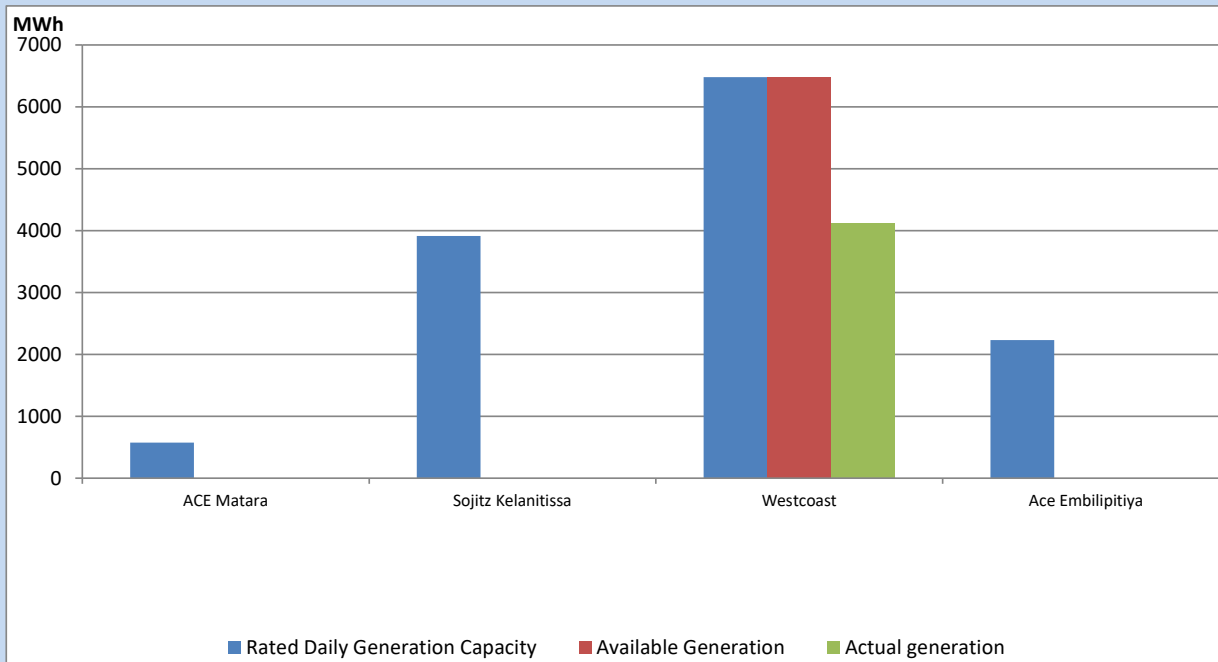
Note- Plant availability is recorded at 6.00 am on

July 6, 2022

## IPP owned Thermal Plant Dispatch

July 5, 2022

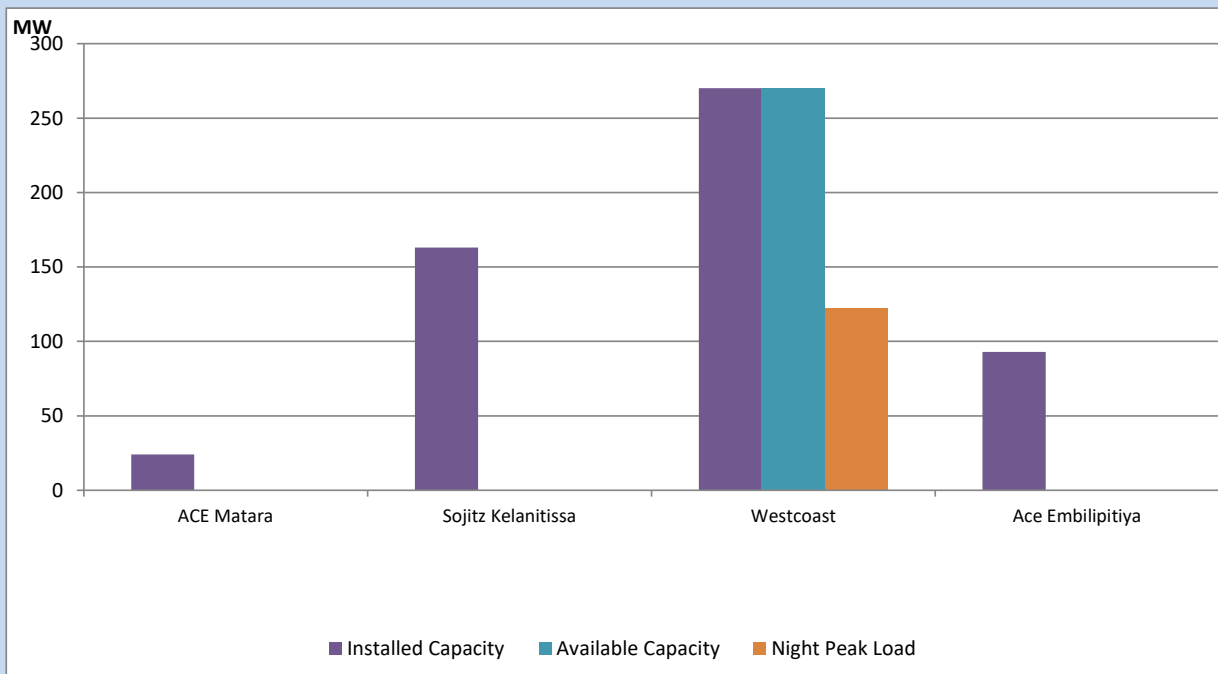
Asia Power, V Power Pallekale, Vpower Galle, V Power Horana, Vpower Hambantota, Vpower Valachchena and Altaqa Mahiyanganaya are not available due to expiration of PPAs



Available Generation is estimated based on plant availability at 6.00am on

July 6, 2022

## IPP owned Thermal Plant Loading at the Night Peak

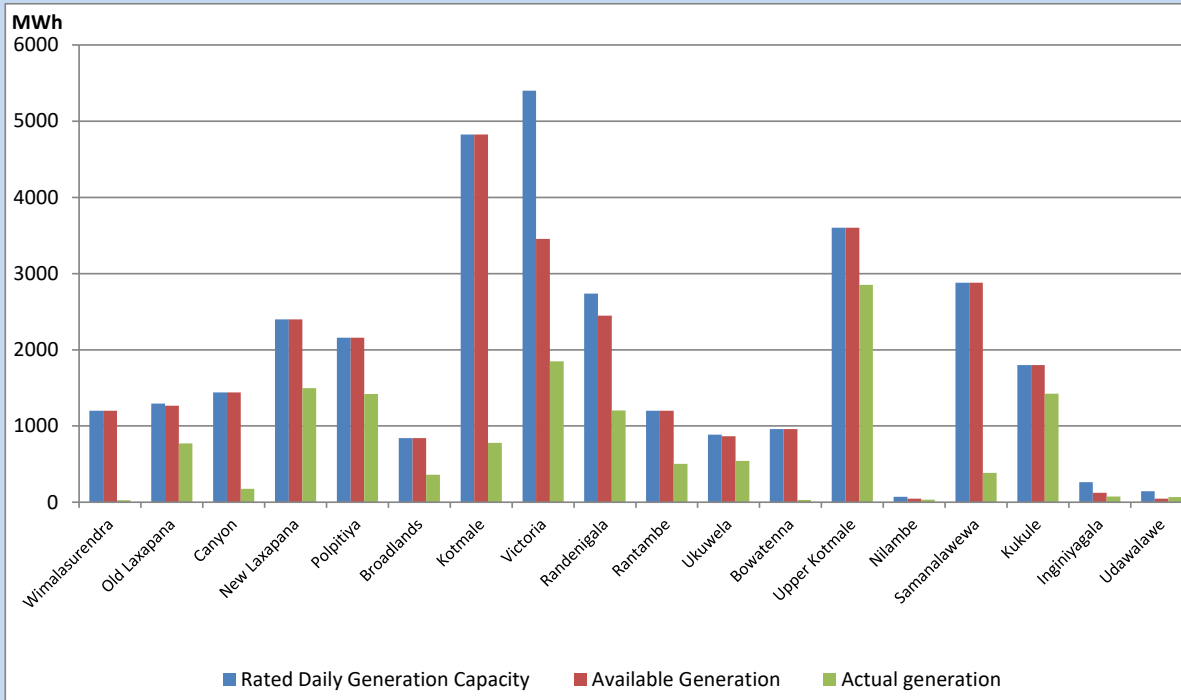


Note- Plant availability is recorded at 6.00 am on

July 6, 2022

## Major Hydro Plant Dispatch

July 5, 2022

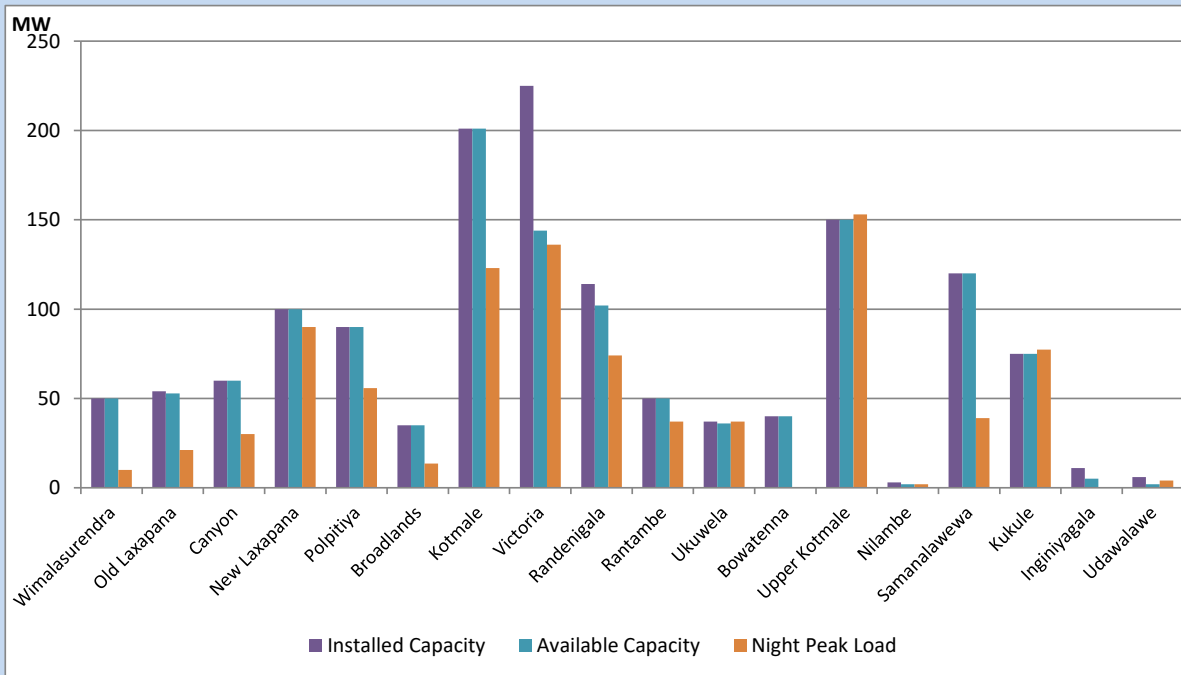


Available Generation is estimated based on plant availability at 6.00am on  
Broadlands power plant is operating in the Commissioning Stage

July 6, 2022

## Major Hydro Plant Loading at Night Peak

July 5, 2022



Note- Plant availability is recorded at 6.00 am on  
Broadlands power plant is operating in the Commissioning Stage

July 6, 2022

## Summary of Major Plant performance

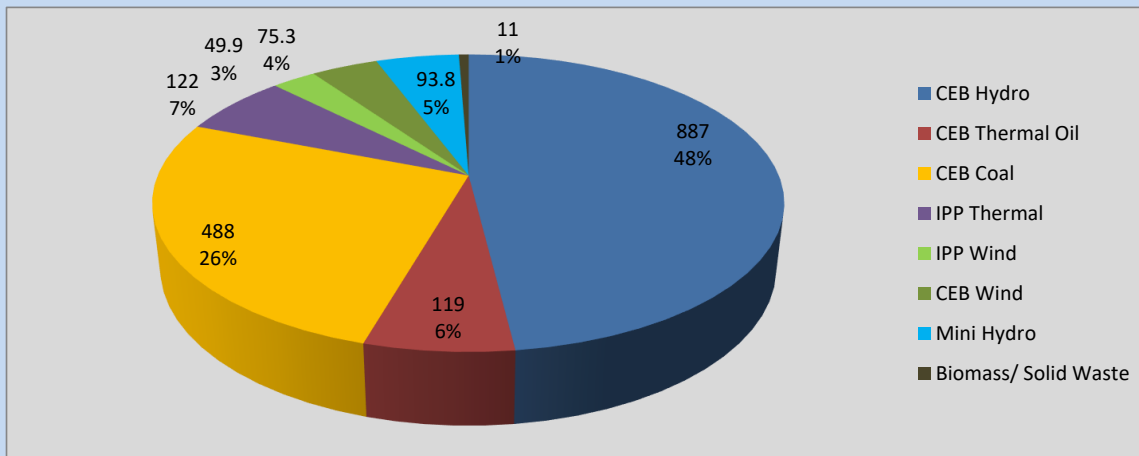
Plant	Installed Capacity	Plant Availability	Night peak Load	Plant Dispatch
	(MW)	(MW)	(MW)	(MWh)
Wimalasurendra	50	50	10	25
Old Laxapana	54	53	21	773
Canyon	60	60	30	175
New Laxapana	100	100	90	1,495
Polpitiya	90	90	56	1,419
Broadlands	35	35	14	361
Kotmale	201	201	123	780
Victoria	225	144	136	1,847
Randenigala	114	102	74	1,205
Rantambe	50	50	37	502
Ukuwela	37	36	37	541
Bowatenna	40	40	0	28
Upper Kotmale	150	150	153	2,853
Nilambe	3	2	2	33
Samanalawewa	120	120	39	384
Kukule	75	75	77	1,423
Inginiyagala	11	5	0	73
Udawalawe	6	2	4	67
Puttalam Coal I	270	270	272	6,460
Puttalam Coal II	270	0	0	0
Puttalam Coal III	270	270	216	5,176
KPS Small GTs	64	16	0	0
KPS GT 7	115	115	0	0
KCCP	161	155	0	0
Sapugaskanda A	70	51	33	830
Sapugaskanda B	70	63	49	1,199
Uthura Janani	26	24	0	0
Barge CEB	60	60	37	802
CEB-Thulhiriya	10	7	0	0
CEB-Kolonnawa	20	14	0	0
CEB-Mathugama	20	0	0	0
ACE Matara	24	0	0	0
Sojitz Kelanitissa	163	0	0	0
West Coast	270	270	122	4,119
ACE Embilipitiya	93	0	0	0
<b>Total</b>	<b>3,397</b>	<b>2,630</b>	<b>1,862</b>	<b>38,904</b>

Plant availability is the availability recorded at 6 am on

July 6, 2022

## Contribution to the Night Peak in MW

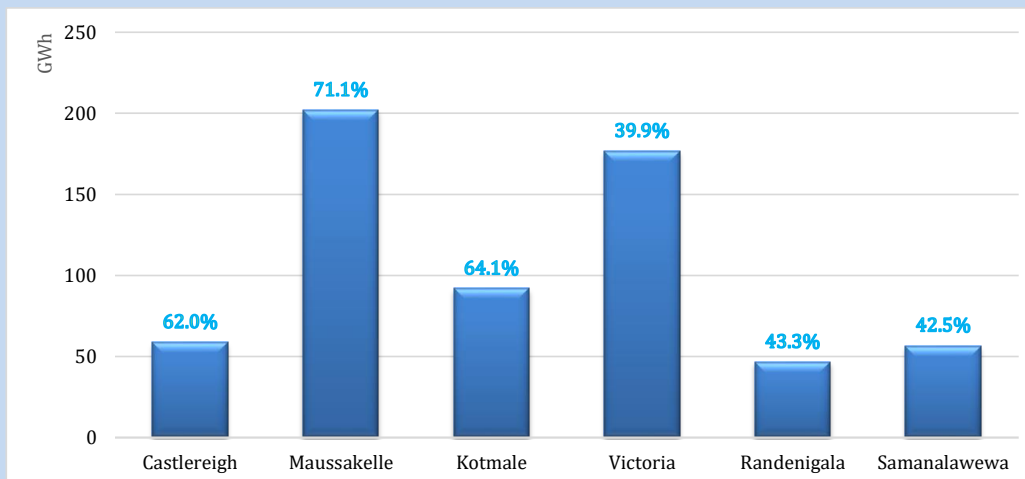
July 5, 2022



Night Peak*	1,845.7 MW
Day Peak	1,850.7 MW
Minimum Demand	1,287.3 MW

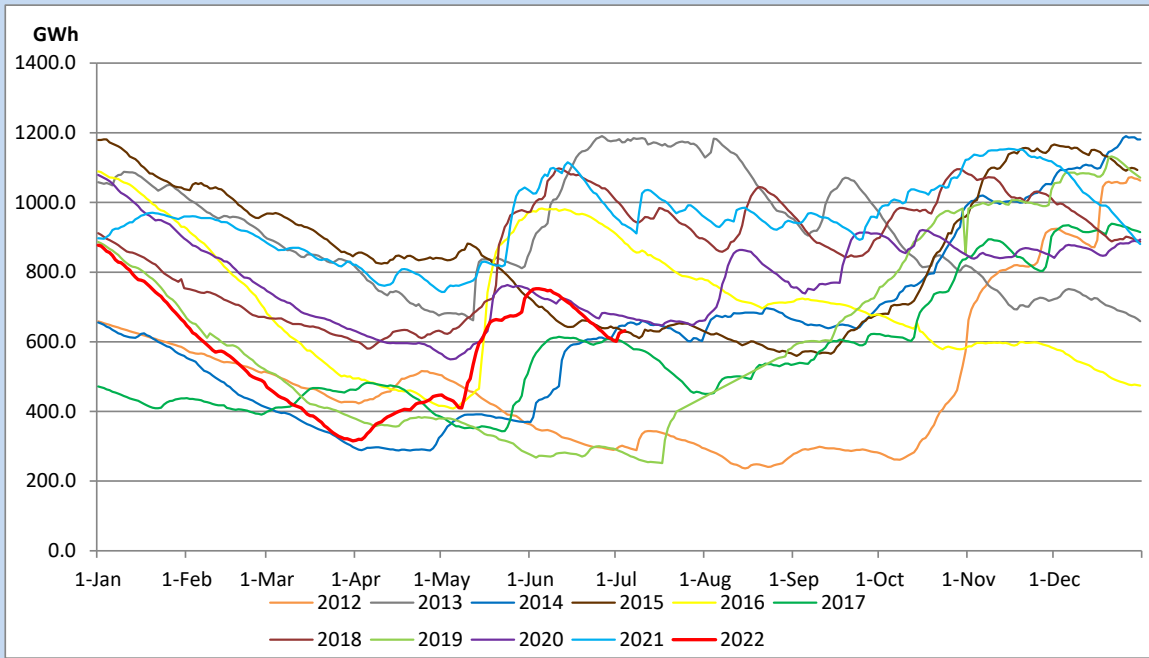
Above figures are excluding contribution from Roof Top Solar, 1MW solar, certain Wind plants and Mini Hydro plants

## Reservoir Levels - as at 06.00 Hr on July 6, 2022

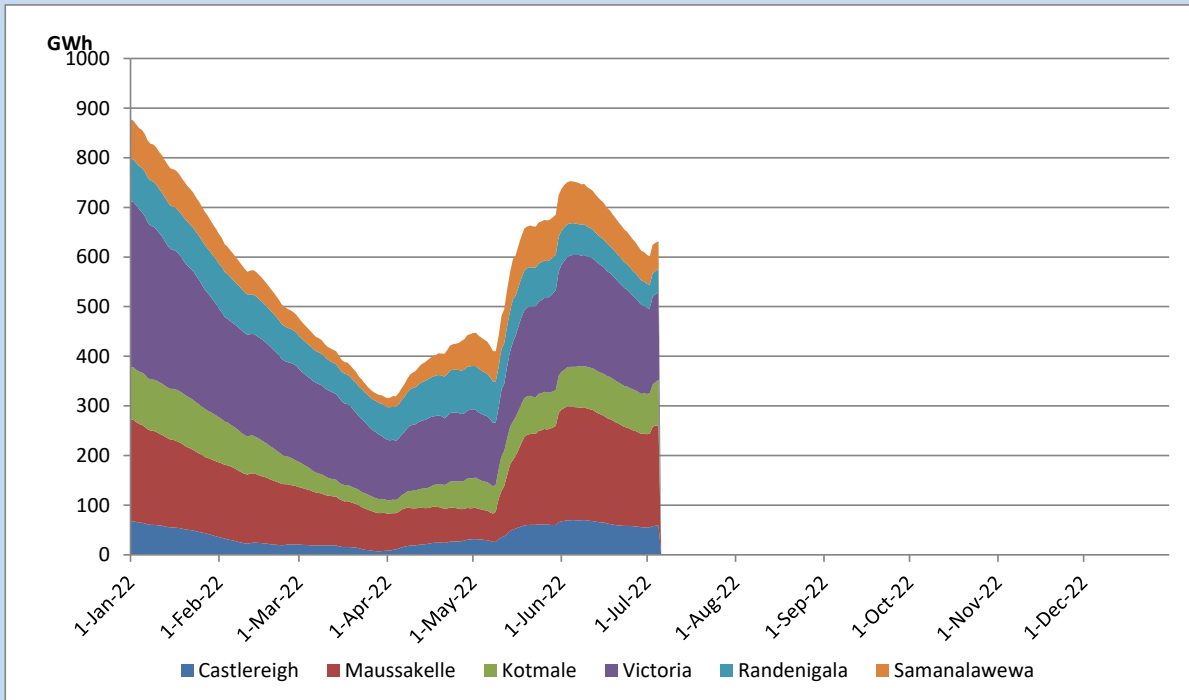


Total Reservoir Level	632.1 GWh
% of Total capacity	52.5%

## Comparison of Total Reservoir Storage Levels with Past Years

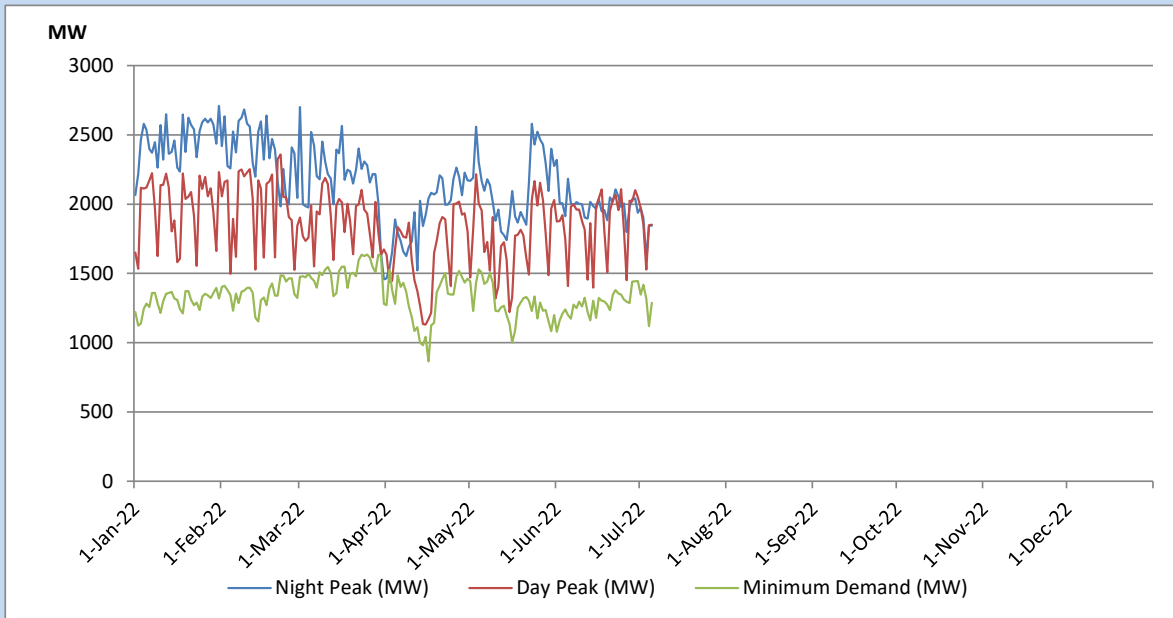


## Variation of Major Hydro Reservoir Levels in the current year (GWh)





## Variation of Demand during the current year

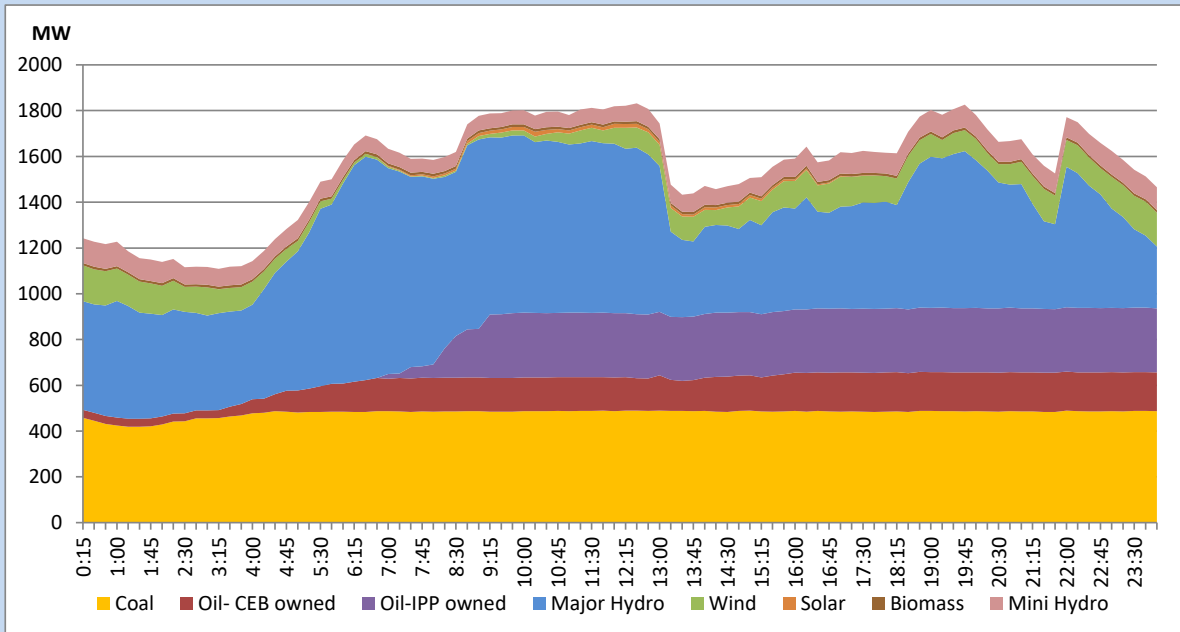


The above figures are excluding contribution from Roof Top Solar, 1MW solar, certain Wind plants and Mini Hydro plants

## Daily Load Curve of the Previous day

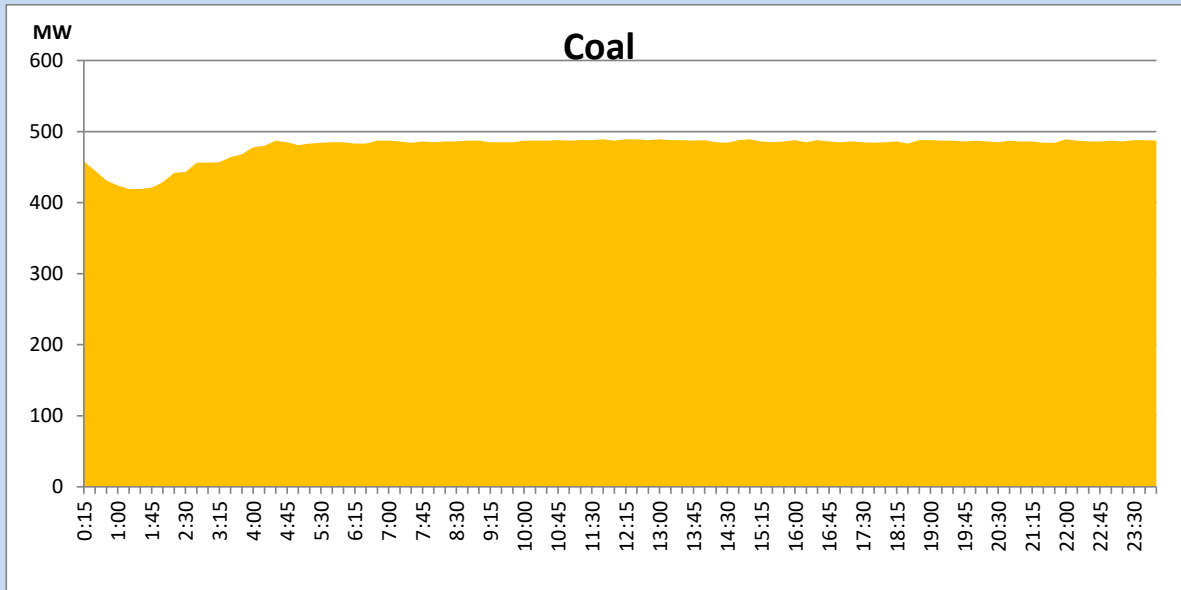
July 4, 2022

Solar and wind data is based on Telemetered Power Stations only



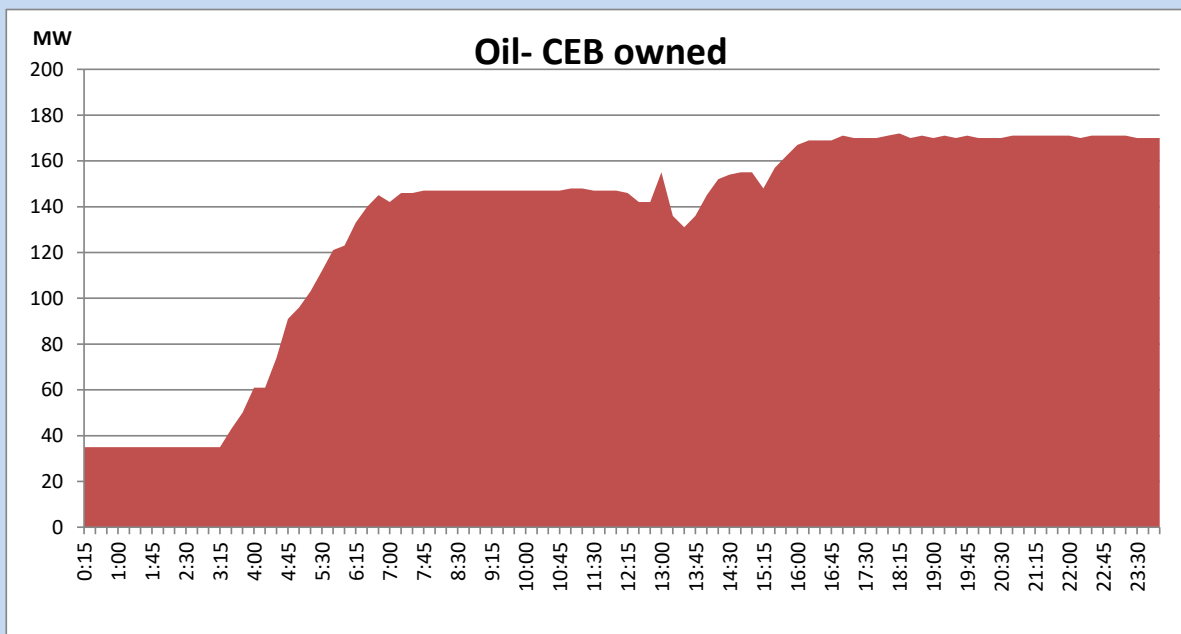
## Coal Generation during the Previous day

July 4, 2022



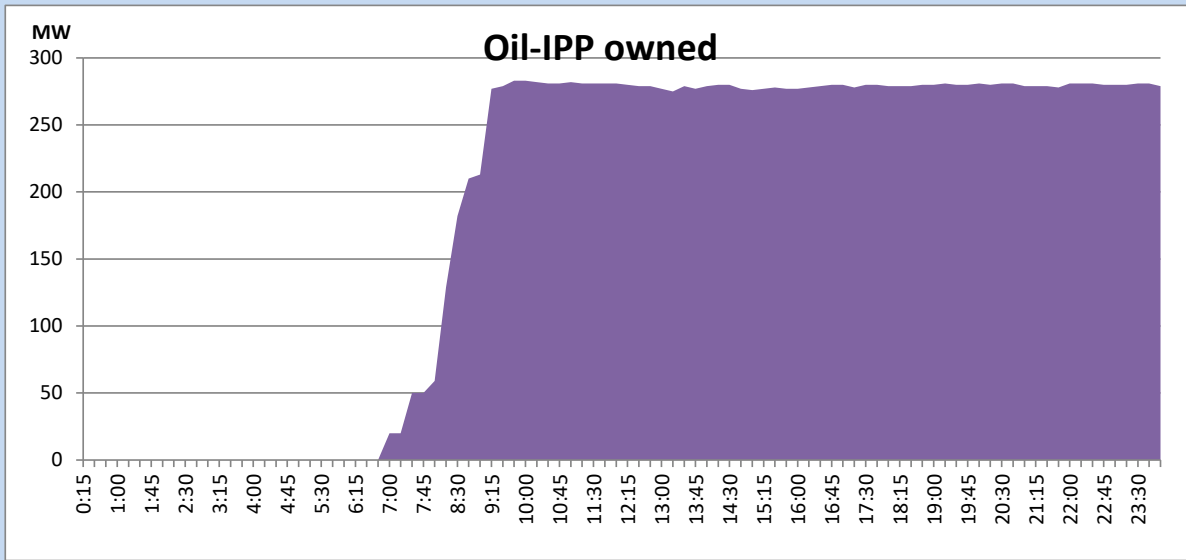
## CEB Oil Plant Generation during the Previous day

July 4, 2022



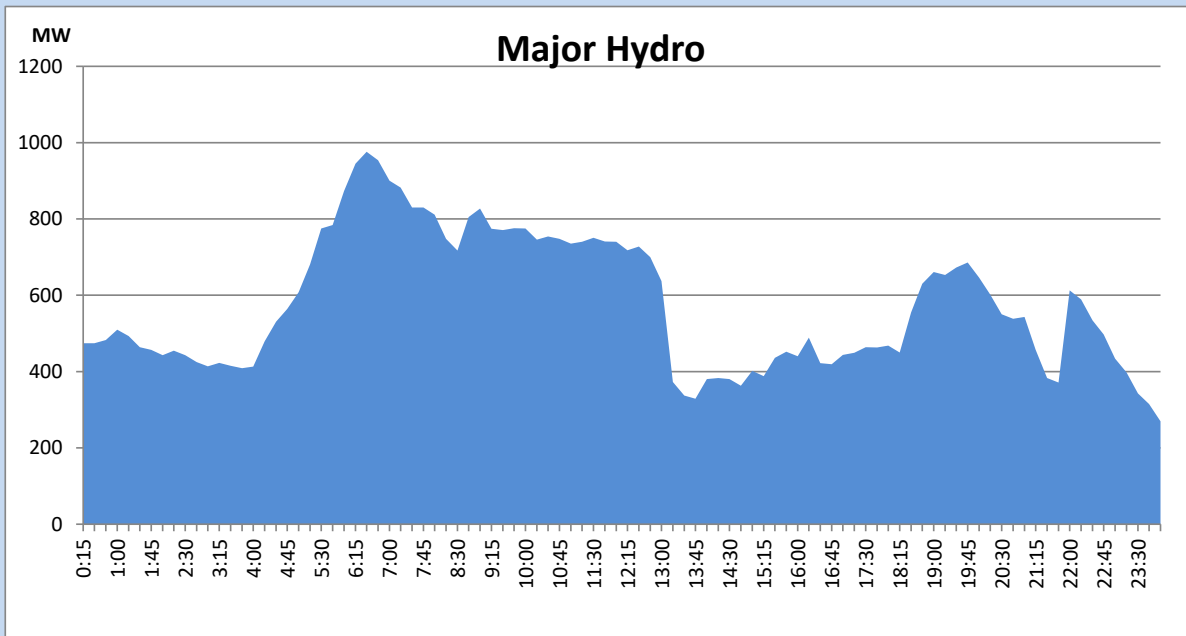
## IPP Oil Plant Generation during the Previous day

July 4, 2022



## Major Hydro Generation during the Previous day

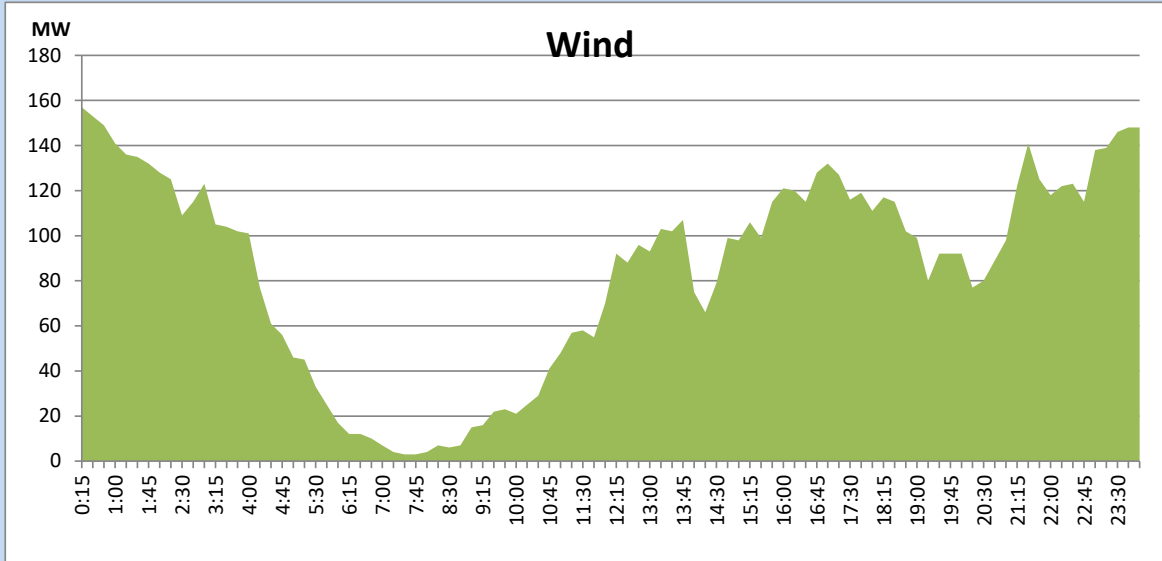
July 4, 2022



## Wind Generation during the Previous day

July 4, 2022

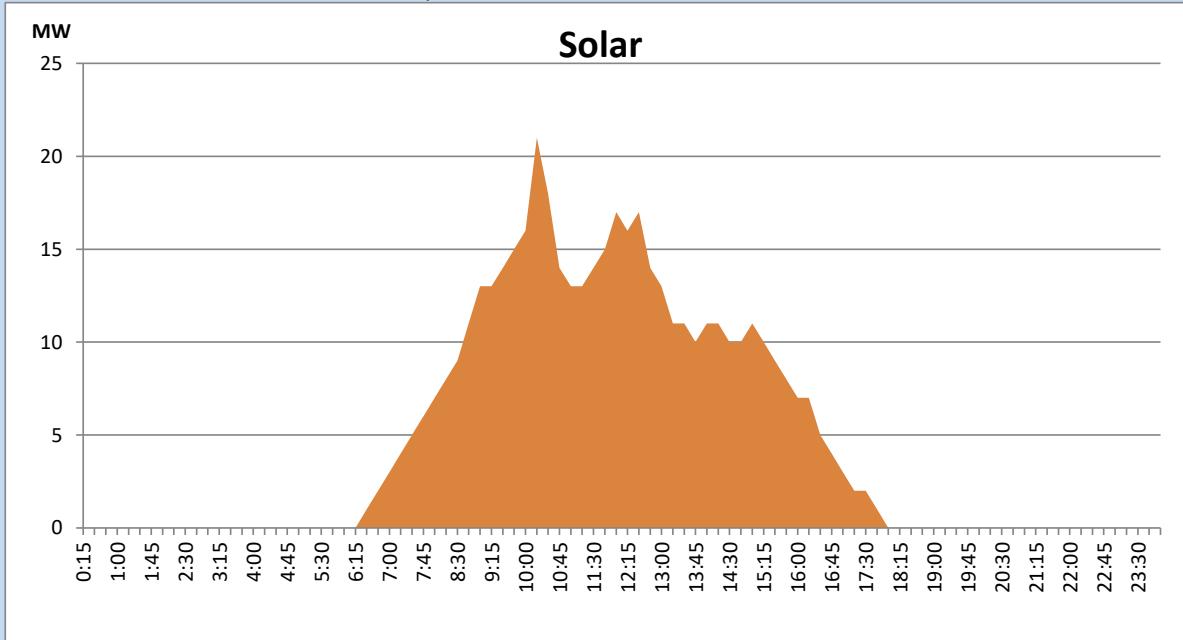
Based on Telemetered Power Stations only



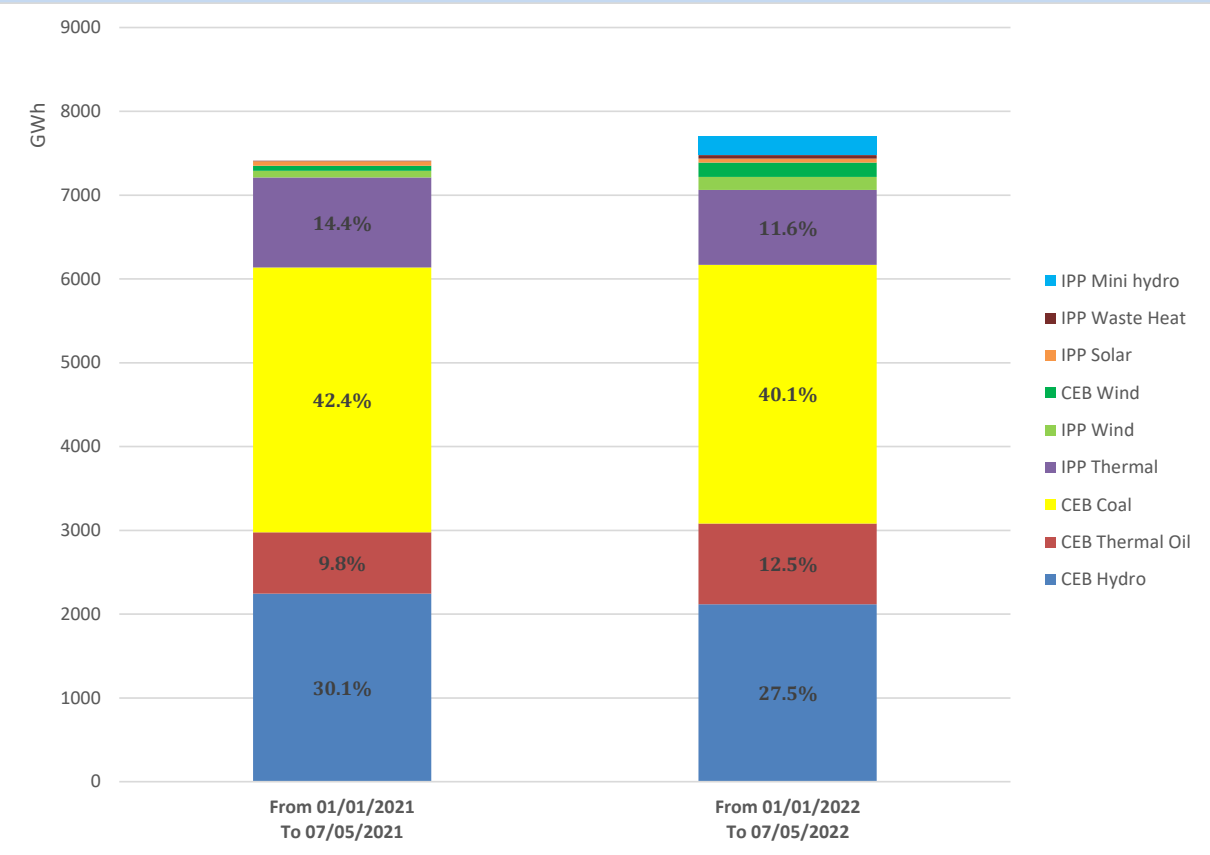
## Solar Generation during the Previous day

July 4, 2022

Based on Telemetered Power Stations only



# Cumulative Dispatch Comparison with Last Year



## Thermal Plant Fuel types

Power Station	Primary Fuel
CEB Thermal	
Sapugaskanda 1	Heavy Fuel
Sapugaskanda 2	Heavy Fuel
Kelanitissa Small Gas Turbines	Auto Diesel
GT 7 - Kelanitissa	Auto Diesel
Kelanitissa CCY	Naphtha or Diesel
Lakvijaya 1	Coal
Lakvijaya 2	Coal
Lakvijaya 3	Coal
Uthuru Janani	Heavy Fuel
Barge CEB	Heavy Fuel

Power Station	Primary Fuel
Private Thermal	
Sojitz - Kelanitissa	Auto Diesel
West Coast	Auto Diesel / Heavy Fuel
ACE Matara	Heavy Fuel
ACE Embilipitiya	Heavy Fuel

## Major Incidents during the day -as reported by CEB morning of

July 6, 2022

- 1) Rotational manual load shedding was carried out from 05:30 hrs to 08:30 hrs and 13:00hrs to 22:00hrs.