

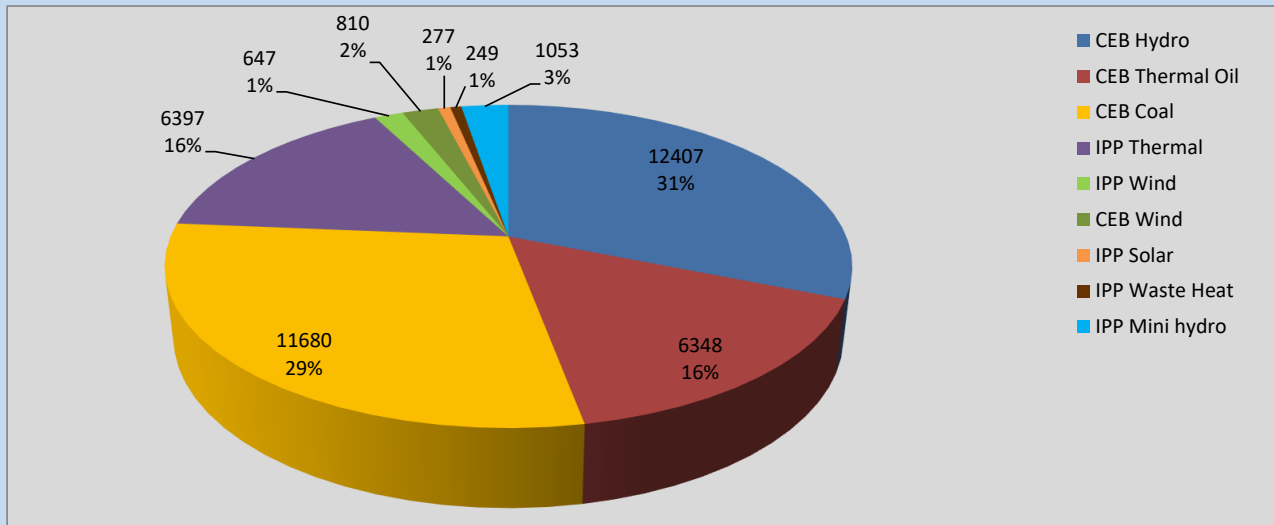
Generation and Reservoirs Statistics

July 2, 2022



PUBLIC UTILITIES COMMISSION OF SRI LANKA

Daily Generation Mix in MWh



Total Generation **39,868 MWh**

Note: Above data is excluding contribution from Roof Top Solar, 1MW Solar and certain Mini Hydro plants

Cumulative Dispatch

Note: Following data is Excluding contribution from Roof Top Solar, 1MW solar and Mini Hydro plants

For Current Month

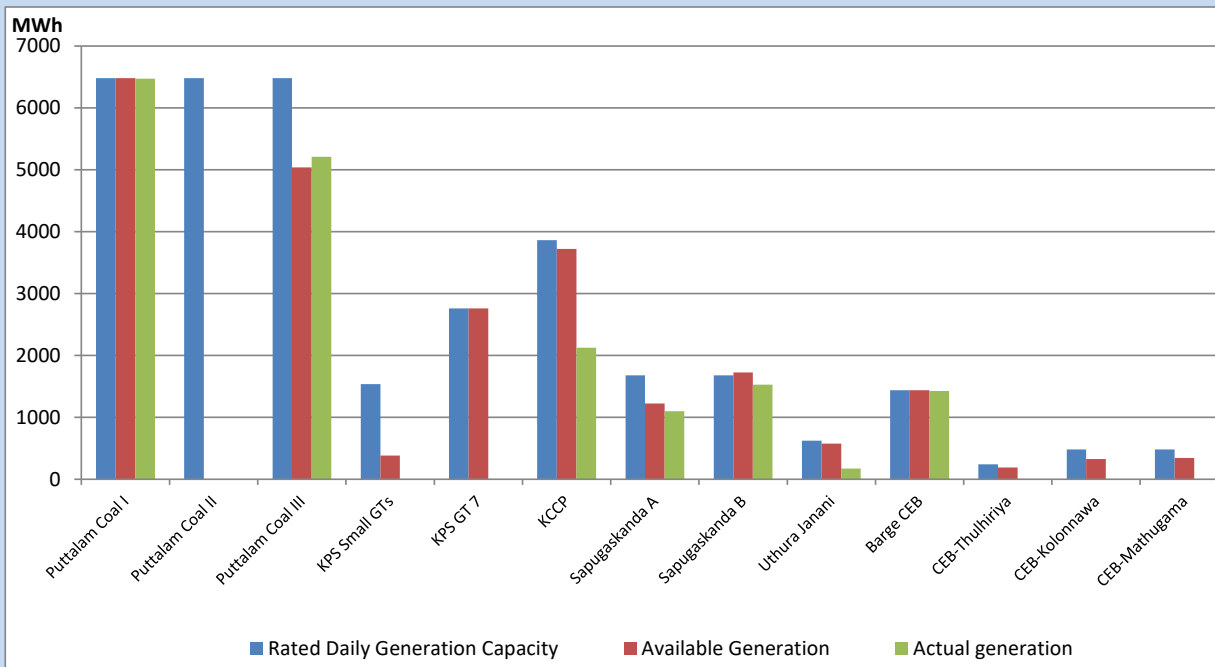
Category	Dispatch (GWh)	Percentage
CEB Hydro	25.16	31.32%
CEB Thermal Oil	14.53	18.09%
CEB Coal	23.35	29.06%
IPP Thermal	11.58	14.41%
SPP Wind	0.98	1.22%
CEB Wind	1.52	1.89%
SPP Solar	0.61	0.76%
SPP Solid Waste	0.51	0.63%
Mini Hydro	2.10	2.61%
Total	80.34	

For Current Year

Category	Dispatch (GWh)	Percentage
CEB Hydro	2,076.5	27.37%
CEB Thermal Oil	954.6	12.58%
CEB Coal	3,051.6	40.22%
IPP Thermal	883.2	11.64%
SPP Wind	150.9	1.99%
CEB Wind	167.4	2.21%
SPP Solar	47.1	0.62%
SPP Solid Waste	39.0	0.51%
Mini Hydro	217.7	2.87%
Total	7,587.7	

CEB owned Thermal Plant Dispatch

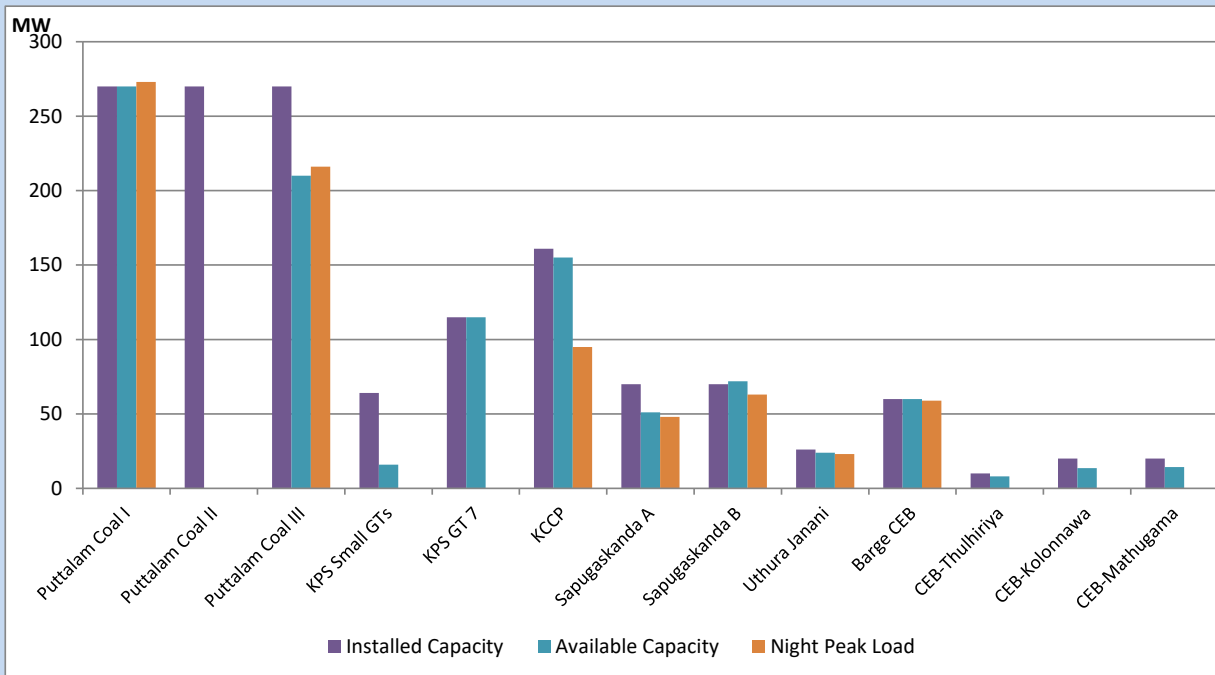
July 2, 2022



Available Generation is estimated based on plant availability at 6.00am on

July 3, 2022

CEB owned Thermal Plant Loading at the Night Peak



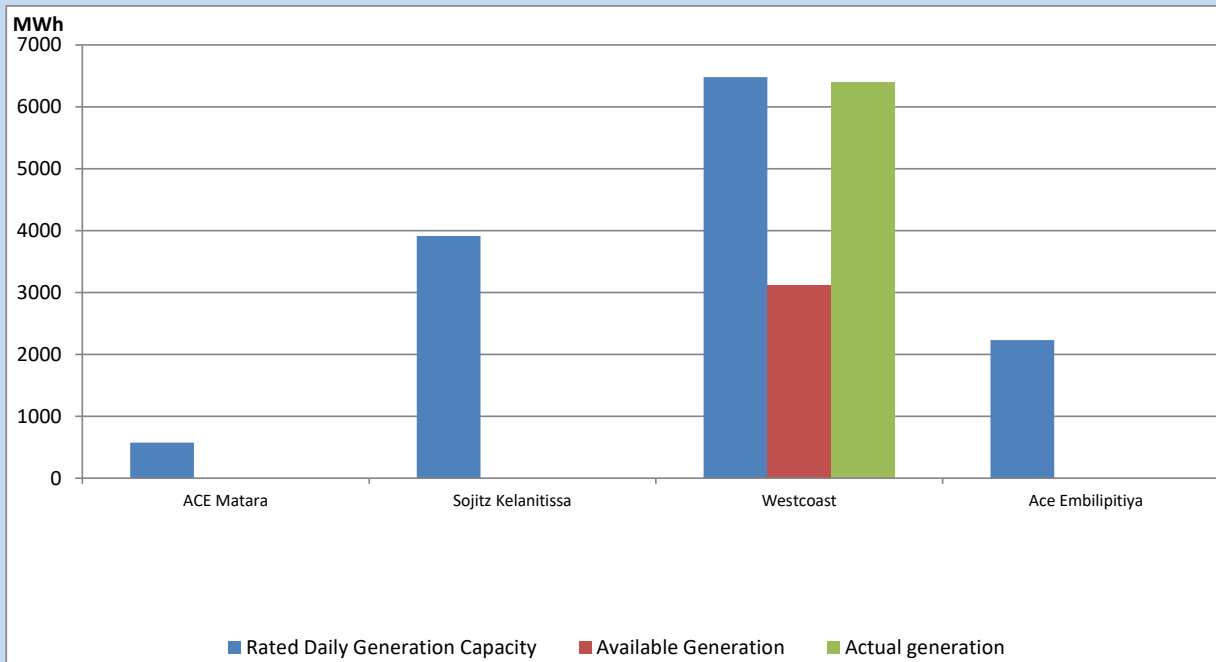
Note- Plant availability is recorded at 6.00 am on

July 3, 2022

IPP owned Thermal Plant Dispatch

July 2, 2022

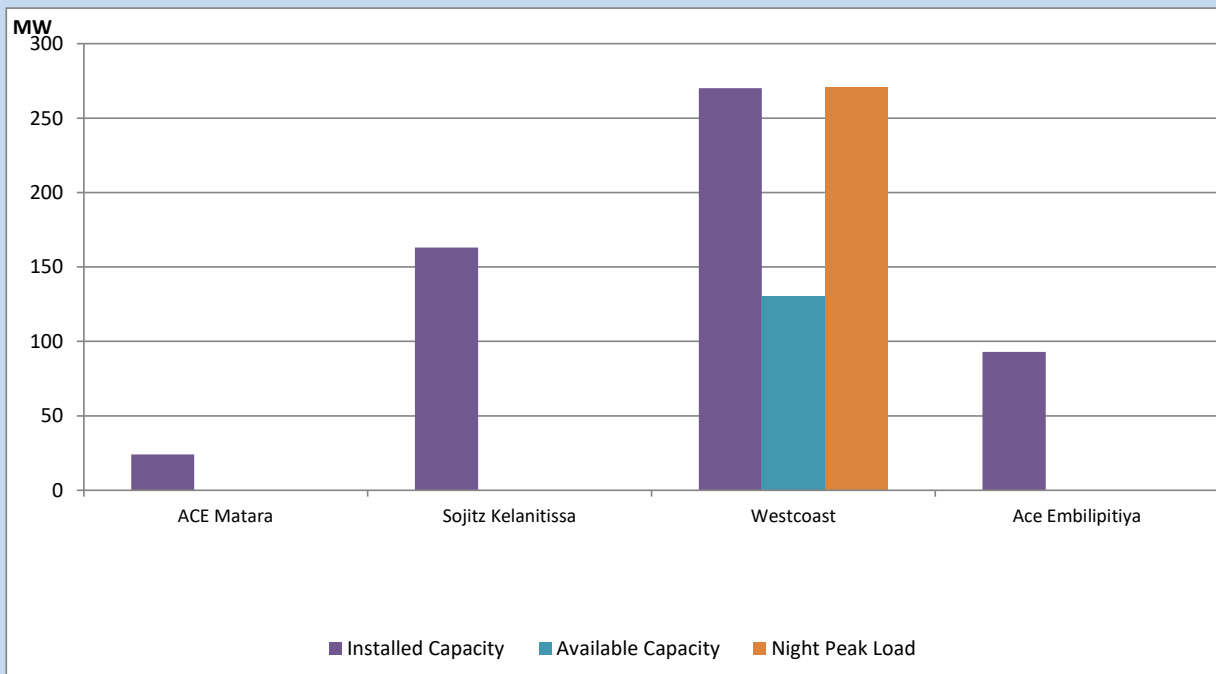
Asia Power, V Power Pallekale, Vpower Galle, V Power Horana, Vpower Hambantota, Vpower Valachchena and Altaqa Mahiyanganaya are not available due to expiration of PPAs



Available Generation is estimated based on plant availability at 6.00am on

July 3, 2022

IPP owned Thermal Plant Loading at the Night Peak

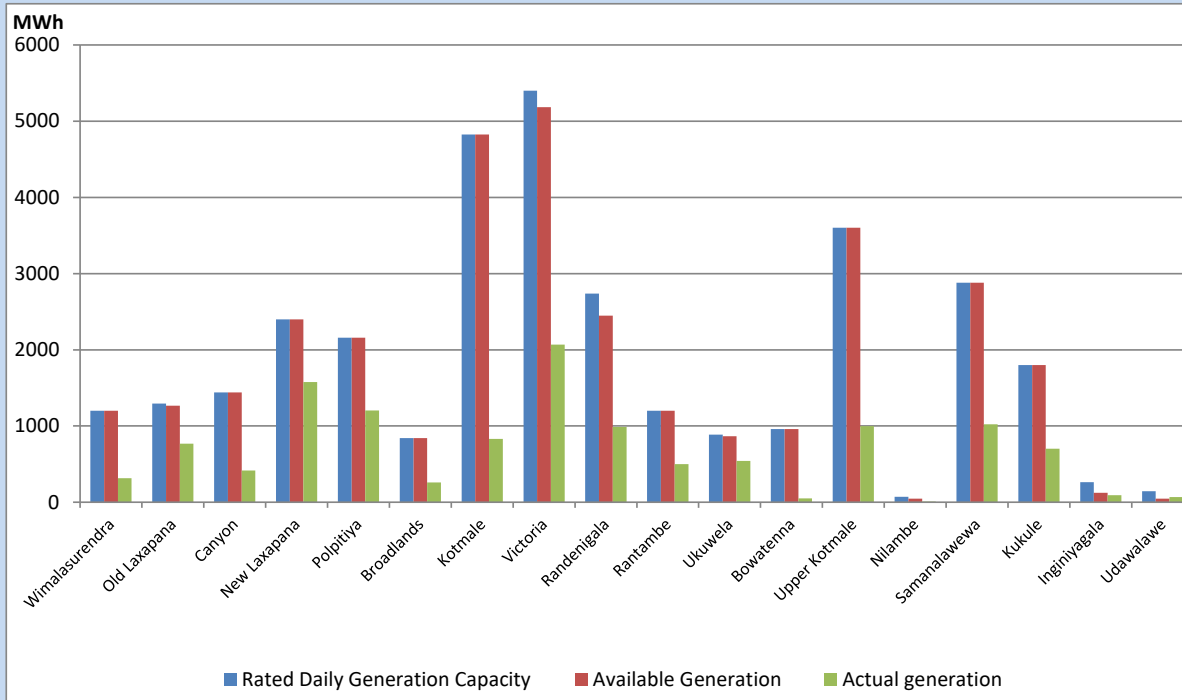


Note- Plant availability is recorded at 6.00 am on

July 3, 2022

Major Hydro Plant Dispatch

July 2, 2022

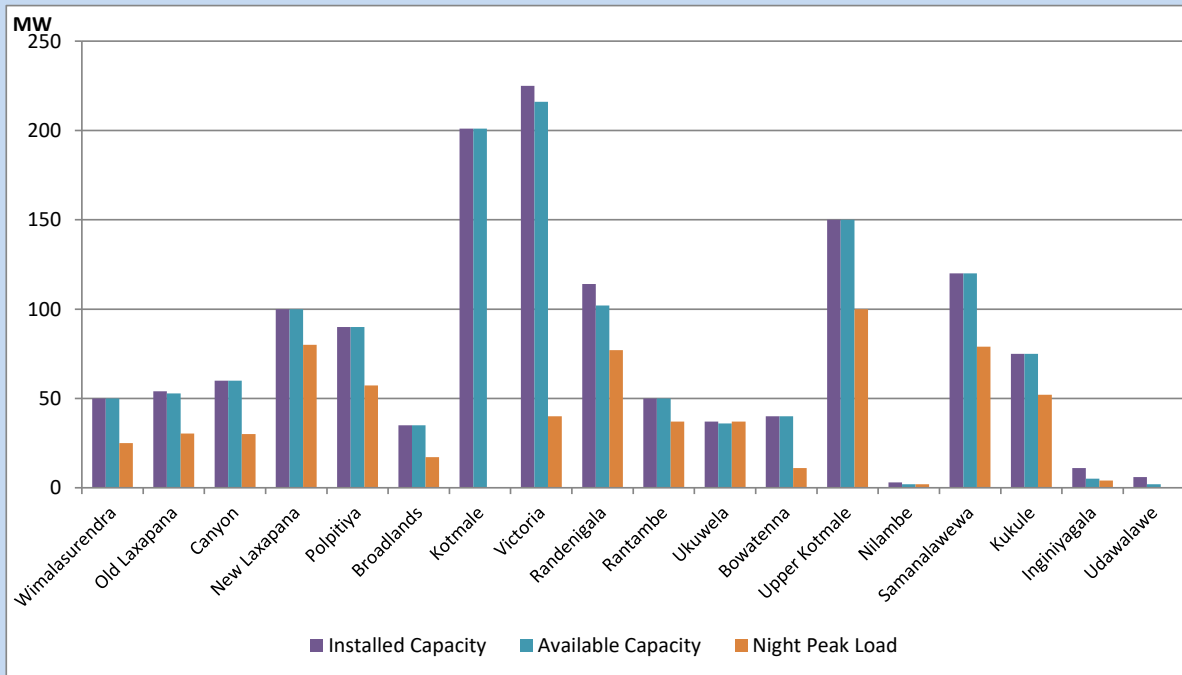


Available Generation is estimated based on plant availability at 6.00am on
Broadlands power plant is operating in the Commissioning Stage

July 3, 2022

Major Hydro Plant Loading at Night Peak

July 2, 2022



Note- Plant availability is recorded at 6.00 am on
Broadlands power plant is operating in the Commissioning Stage

July 3, 2022

Summary of Major Plant performance

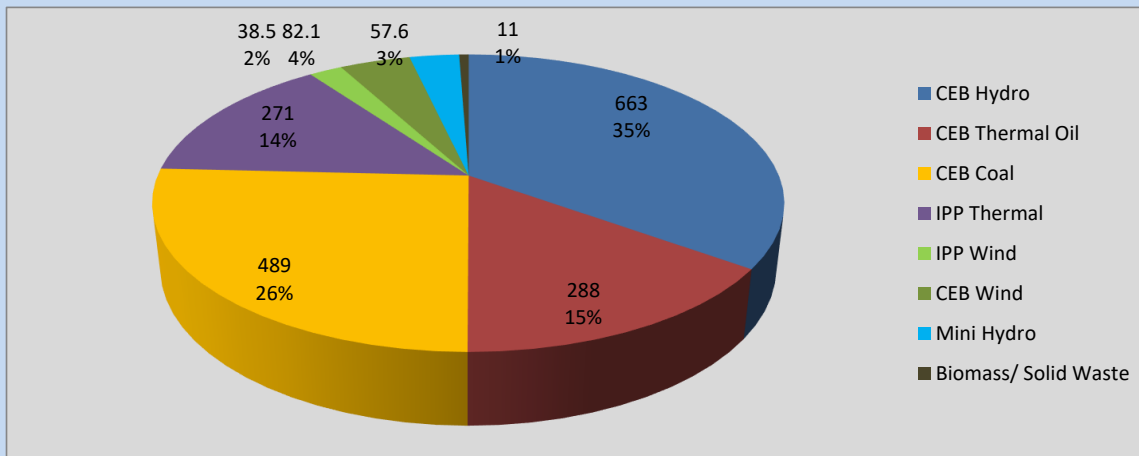
Plant	Installed Capacity	Plant Availability	Night peak Load	Plant Dispatch
	(MW)	(MW)	(MW)	(MWh)
Wimalasurendra	50	50	25	316
Old Laxapana	54	53	30	767
Canyon	60	60	30	416
New Laxapana	100	100	80	1,576
Polpitiya	90	90	57	1,203
Broadlands	35	35	17	258
Kotmale	201	201	0	830
Victoria	225	216	40	2,069
Randenigala	114	102	77	989
Rantambe	50	50	37	501
Ukuwela	37	36	37	542
Bowatenna	40	40	11	50
Upper Kotmale	150	150	100	997
Nilambe	3	2	2	8
Samanalawewa	120	120	79	1,023
Kukule	75	75	52	703
Inginiyagala	11	5	4	92
Udawalawe	6	2	0	67
Puttalam Coal I	270	270	273	6,471
Puttalam Coal II	270	0	0	0
Puttalam Coal III	270	210	216	5,209
KPS Small GTs	64	16	0	0
KPS GT 7	115	115	0	0
KCCP	161	155	95	2,124
Sapugaskanda A	70	51	48	1,098
Sapugaskanda B	70	72	63	1,527
Uthura Janani	26	24	23	171
Barge CEB	60	60	59	1,428
CEB-Thulhiriya	10	8	0	0
CEB-Kolonnawa	20	14	0	0
CEB-Mathugama	20	14	0	0
ACE Matara	24	0	0	0
Sojitz Kelanitissa	163	0	0	0
West Coast	270	130	271	6,397
ACE Embilipitiya	93	0	0	0
Total	3,397	2,526	1,916	39,868

Plant availability is the availability recorded at 6 am on

July 3, 2022

Contribution to the Night Peak in MW

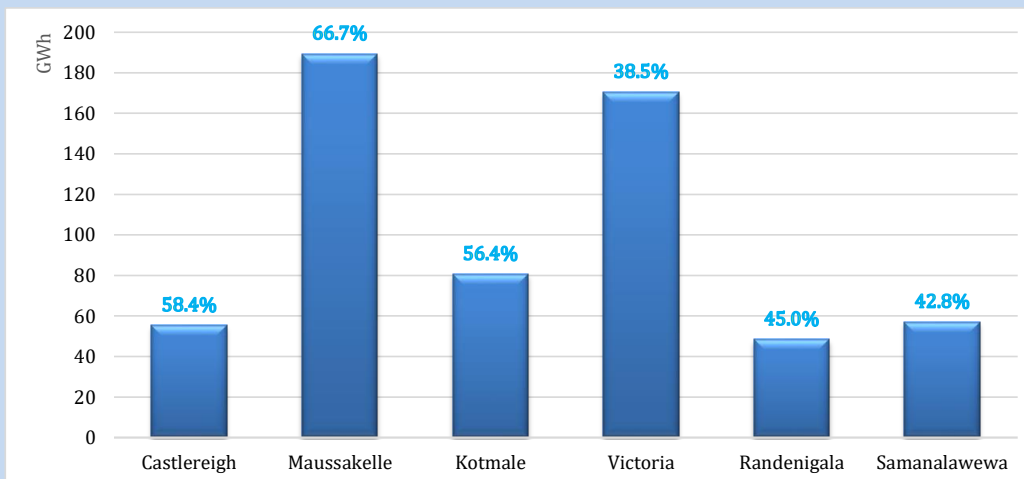
July 2, 2022



Night Peak*	1,900.1 MW
Day Peak	1,854.7 MW
Minimum Demand	1,417.6 MW

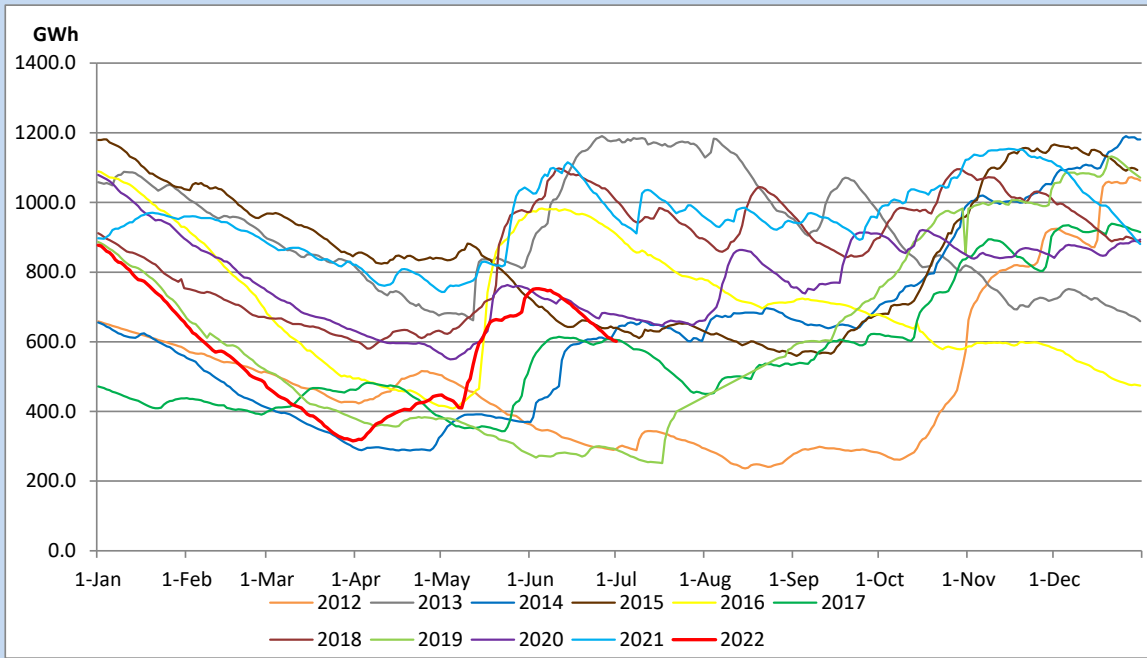
Above figures are excluding contribution from Roof Top Solar, 1MW solar, certain Wind plants and Mini Hydro plants

Reservoir Levels - as at 06.00 Hr on July 3, 2022

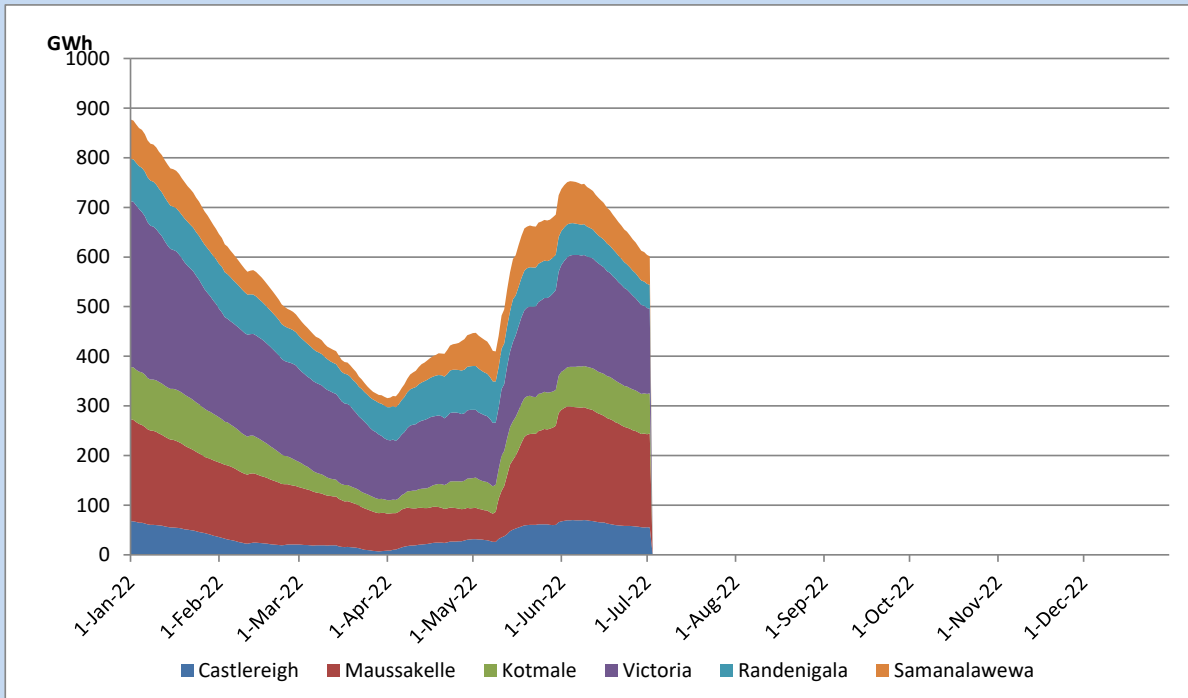


Total Reservoir Level	601.2 GWh
% of Total capacity	49.9%

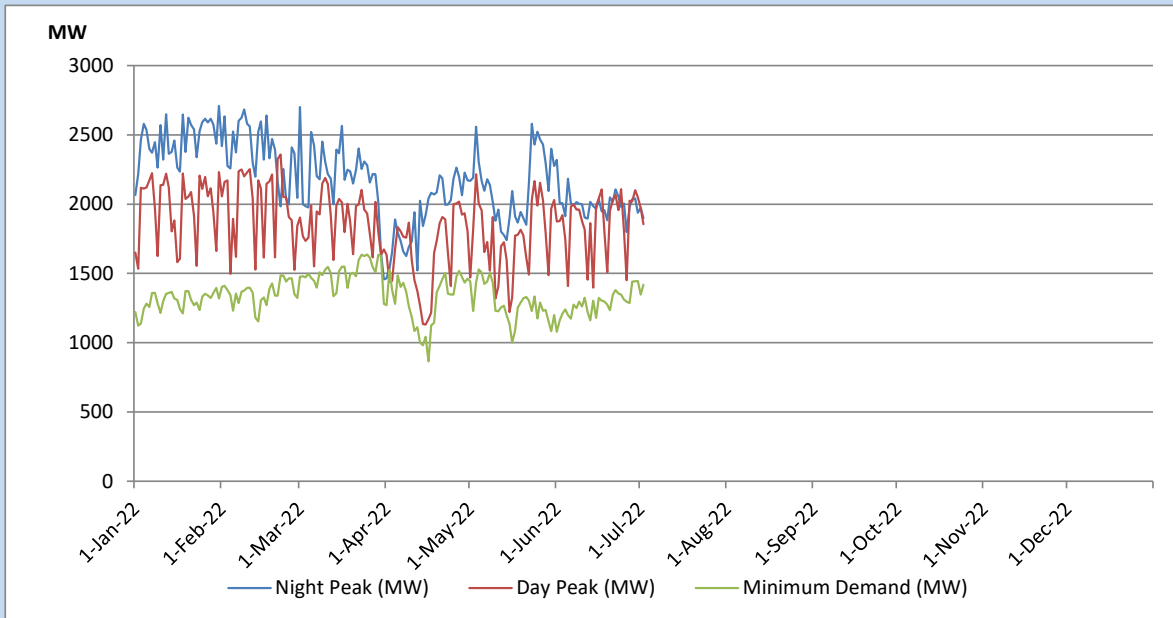
Comparison of Total Reservoir Storage Levels with Past Years



Variation of Major Hydro Reservoir Levels in the current year (GWh)



Variation of Demand during the current year

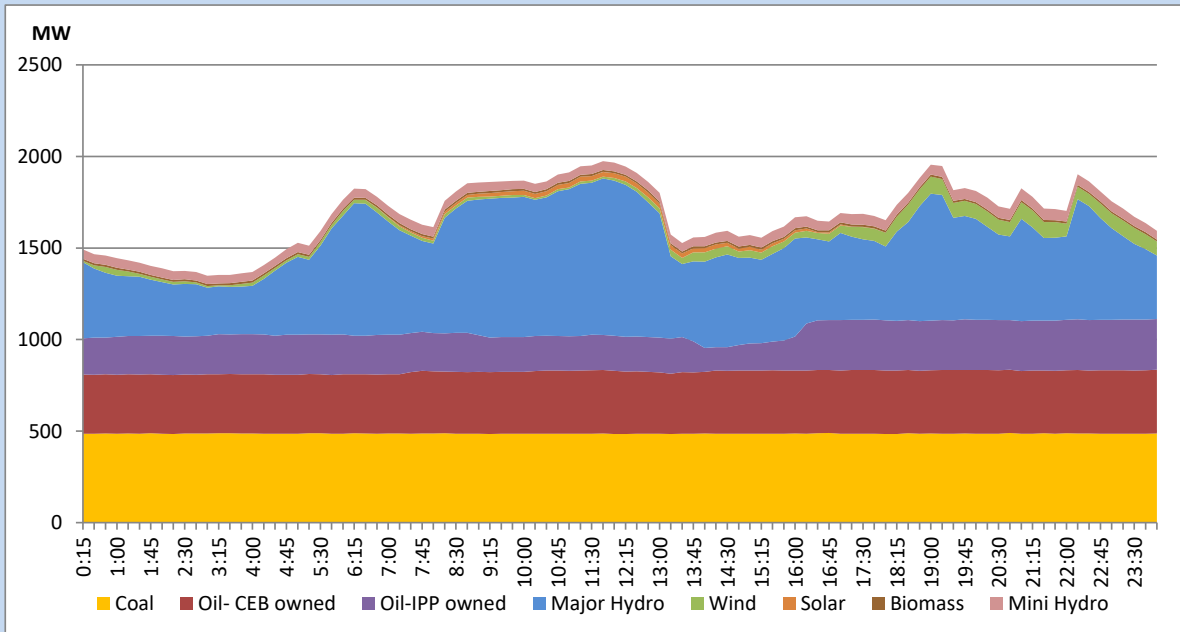


The above figures are excluding contribution from Roof Top Solar, 1MW solar, certain Wind plants and Mini Hydro plants

Daily Load Curve of the Previous day

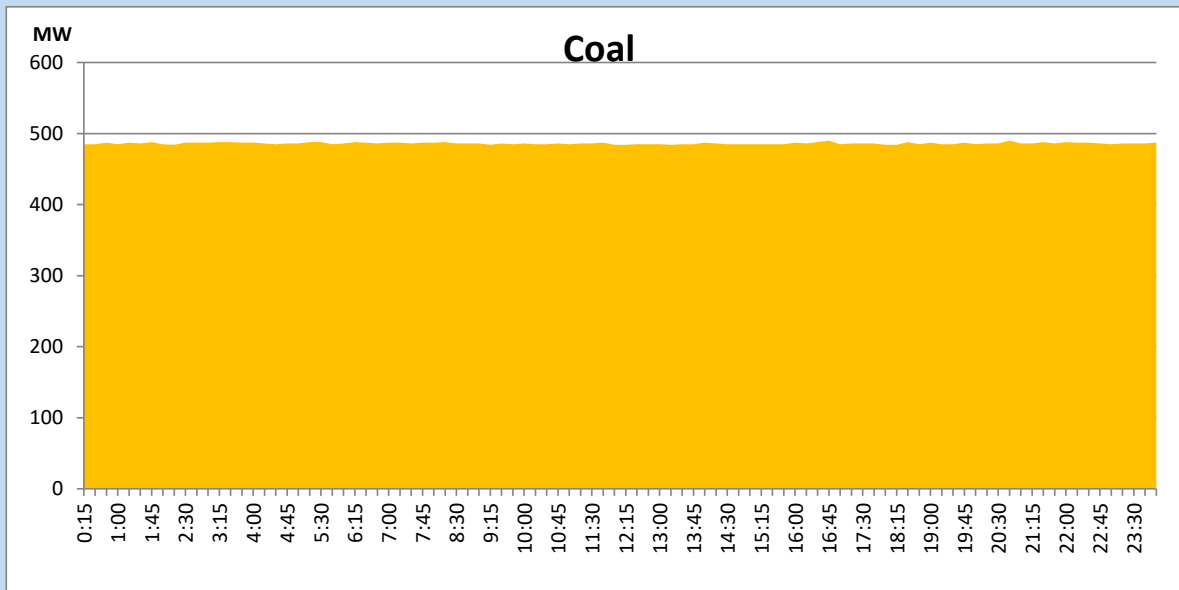
July 1, 2022

Solar and wind data is based on Telemetered Power Stations only



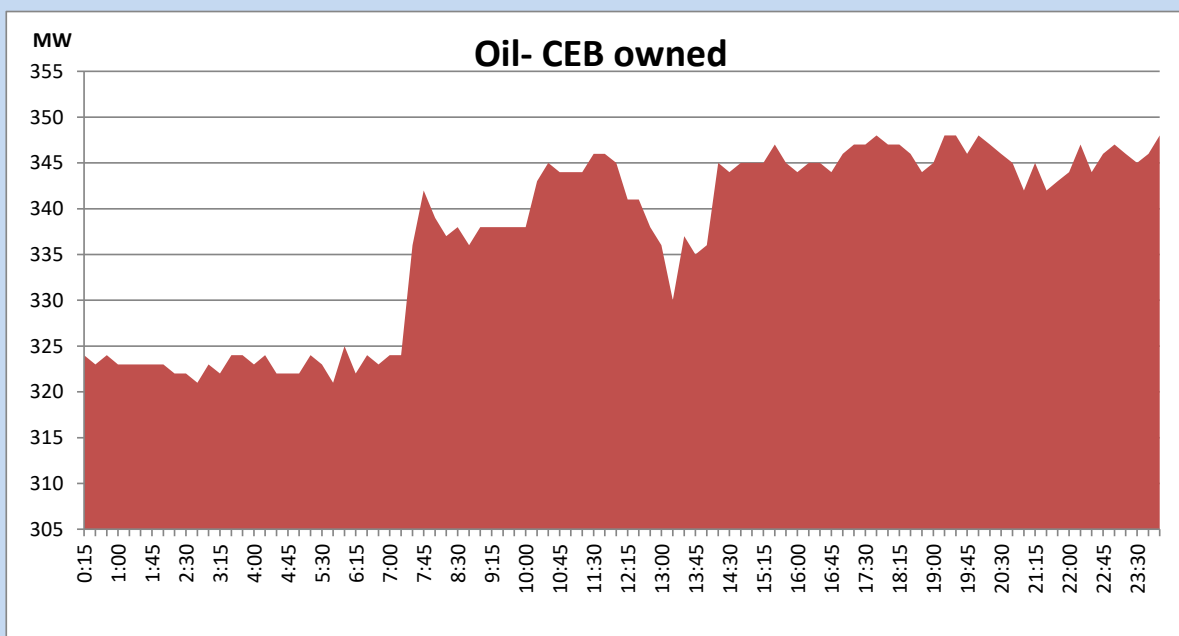
Coal Generation during the Previous day

July 1, 2022



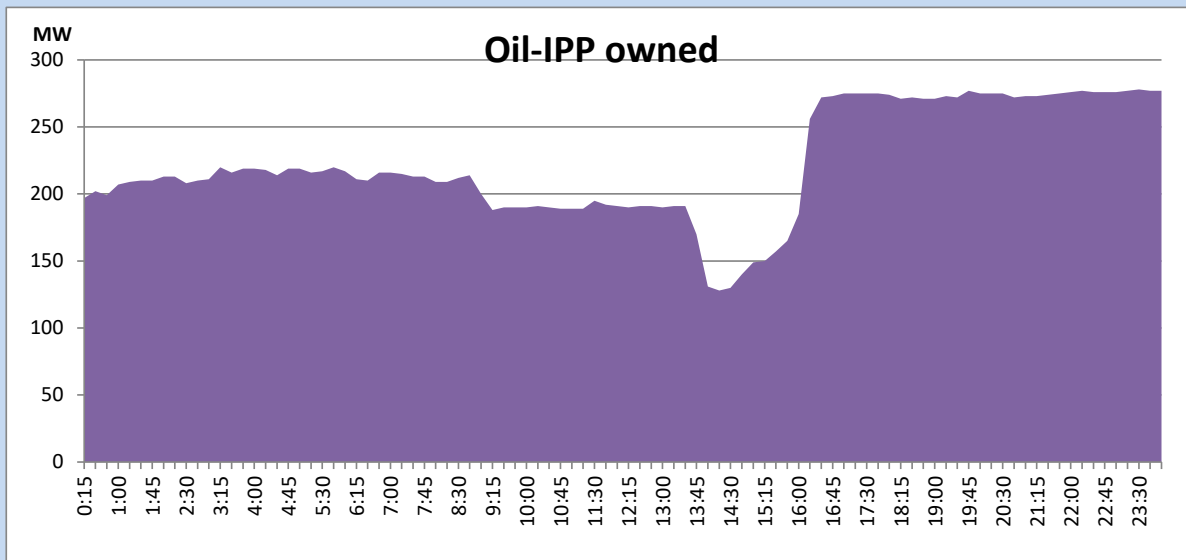
CEB Oil Plant Generation during the Previous day

July 1, 2022



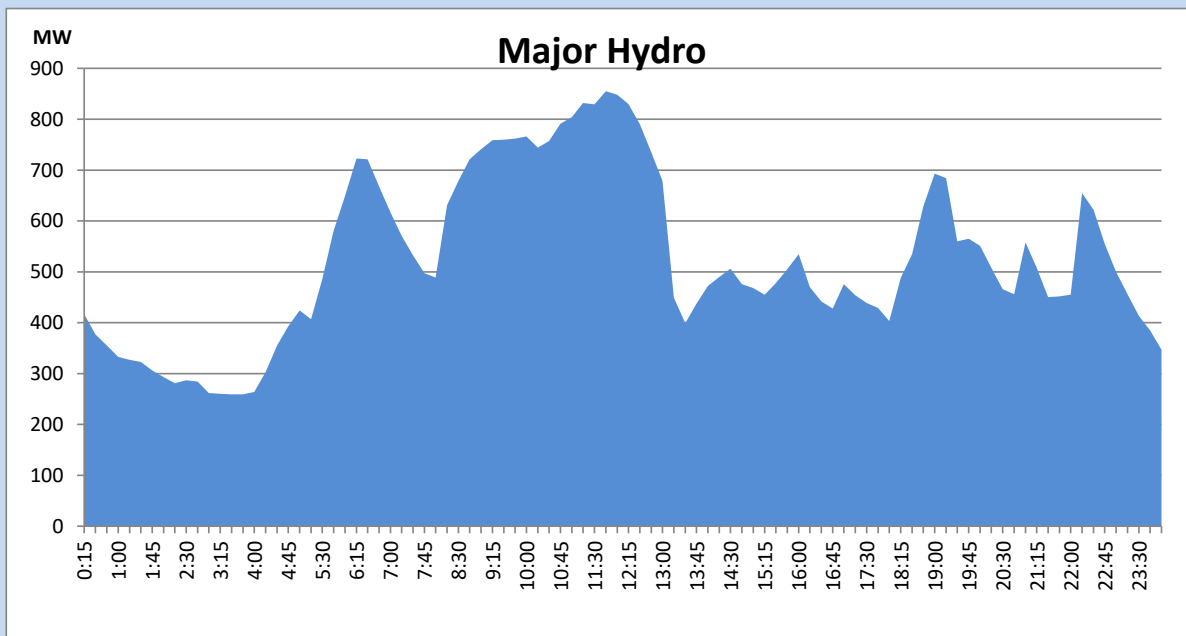
IPP Oil Plant Generation during the Previous day

July 1, 2022



Major Hydro Generation during the Previous day

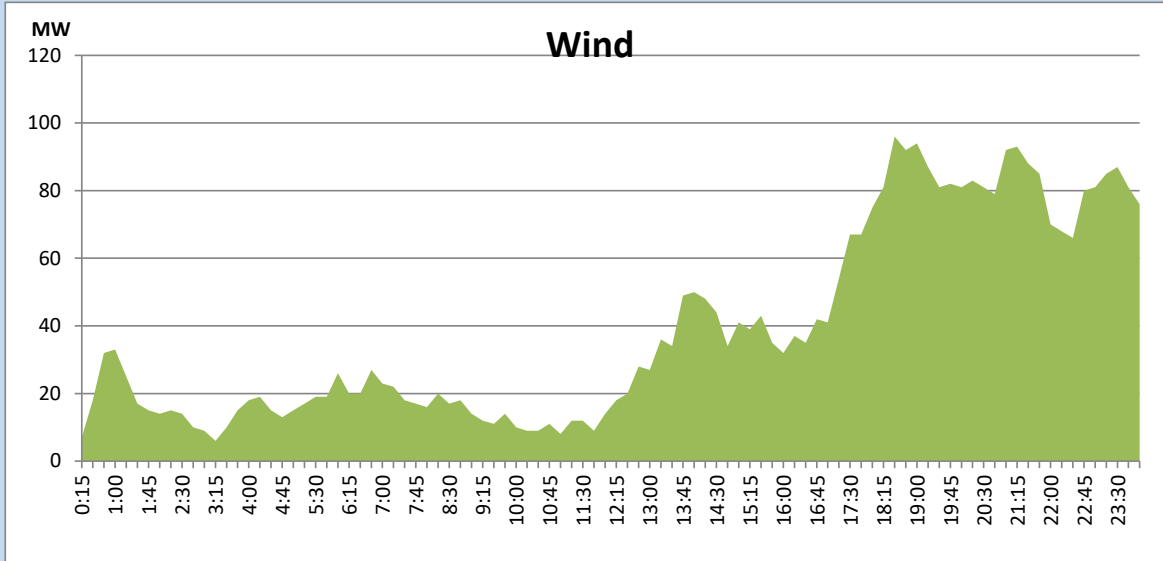
July 1, 2022



Wind Generation during the Previous day

July 1, 2022

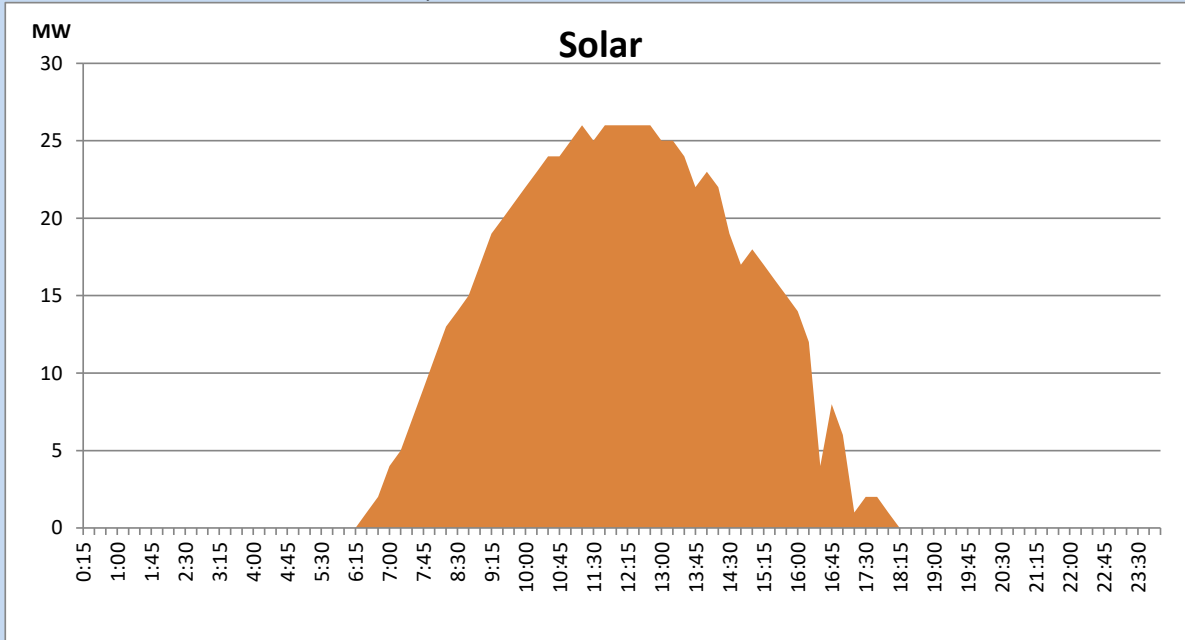
Based on Telemetered Power Stations only



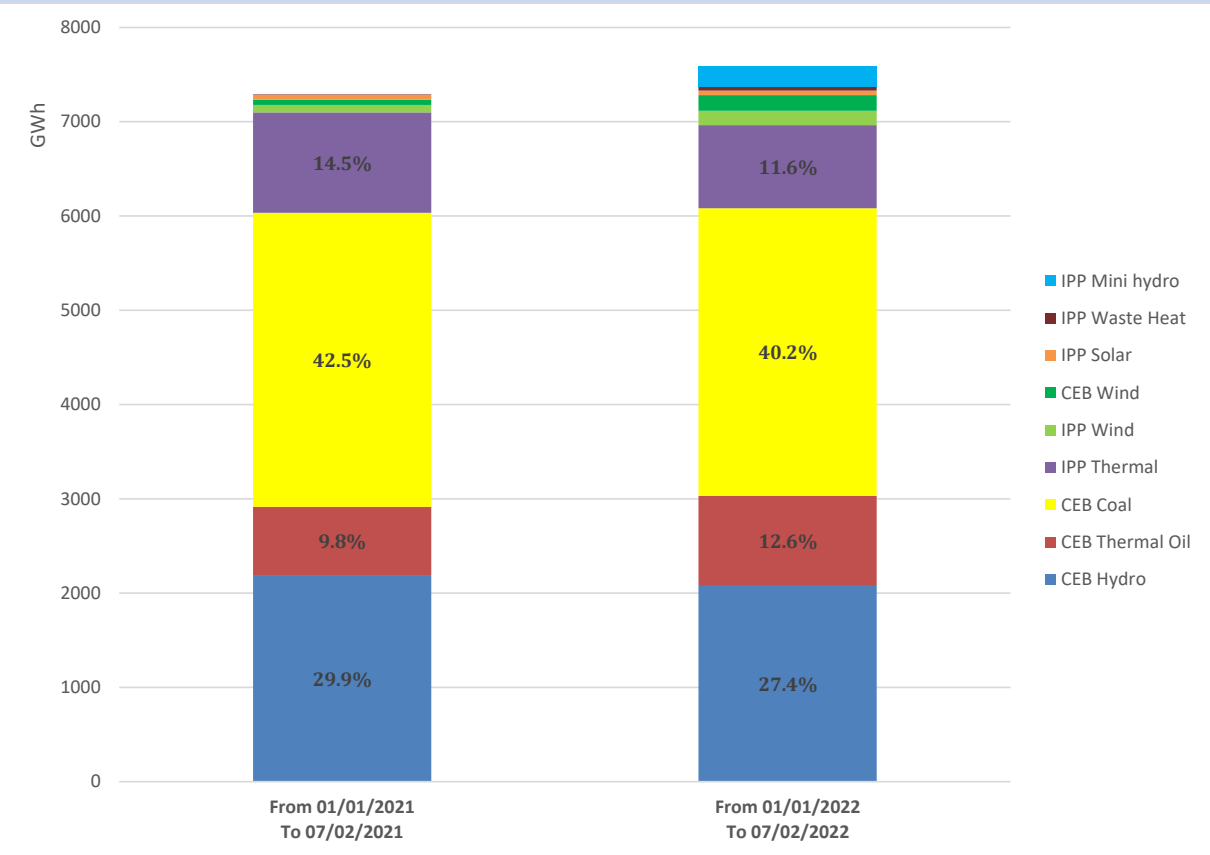
Solar Generation during the Previous day

July 1, 2022

Based on Telemetered Power Stations only



Cumulative Dispatch Comparison with Last Year



Thermal Plant Fuel types

Power Station	Primary Fuel
CEB Thermal	
Sapugaskanda 1	Heavy Fuel
Sapugaskanda 2	Heavy Fuel
Kelanitissa Small Gas Turbines	Auto Diesel
GT 7 - Kelanitissa	Auto Diesel
Kelanitissa CCY	Naphtha or Diesel
Lakvijaya 1	Coal
Lakvijaya 2	Coal
Lakvijaya 3	Coal
Uthuru Janani	Heavy Fuel
Barge CEB	Heavy Fuel

Power Station	Primary Fuel
Private Thermal	
Sojitz - Kelanitissa	Auto Diesel
West Coast	Auto Diesel / Heavy Fuel
ACE Matara	Heavy Fuel
ACE Embilipitiya	Heavy Fuel

Major Incidents during the day -as reported by CEB morning of

July 3, 2022

- 1) Rotational manual load shedding was carried out from 10:20 hrs to 12:00 hrs and 14:40hrs to 22:00hrs.
- 2) N'Chilaw - Puttalam cct 02 tripped and A/R at 8:30hrs due to operation of distance protection.
- 3) Kegalle 33kV feeder 01 and 02 tripped at 17:33hrs due to operation of E/F protection and at the same time 33kV B/S CB tripped. Kegalle 33kV feeder 01 and 02 restored at 17:45hrs and Kegalle 33kV B/S CB energized at 19:15hrs.
- 4) Laxapana and Canyon ponds spilling started at 5:07hrs (03/07/2022) & 5:18hrs (03/07/2022), respectively. Laxapana & Canyon ponds spilling continues to present hour.