

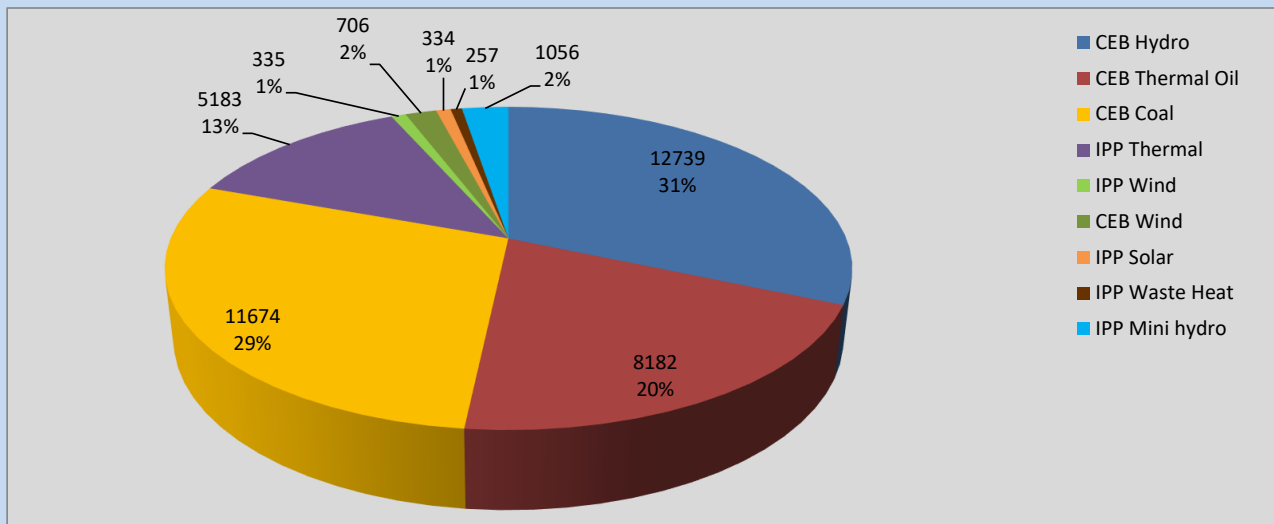
Generation and Reservoirs Statistics

July 1, 2022



PUBLIC UTILITIES COMMISSION OF SRI LANKA

Daily Generation Mix in MWh



Total Generation **40,466 MWh**

Note: Above data is excluding contribution from Roof Top Solar, 1MW Solar and certain Mini Hydro plants

Cumulative Dispatch

Note: Following data is Excluding contribution from Roof Top Solar, 1MW solar and Mini Hydro plants

For Current Month

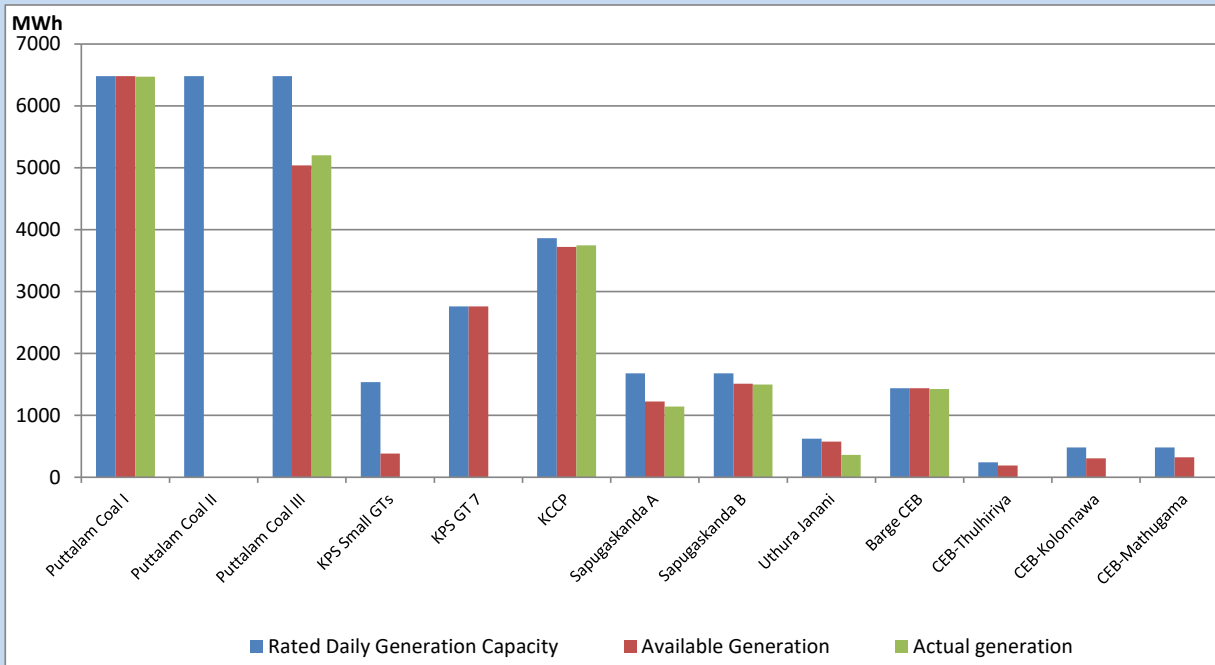
Category	Dispatch (GWh)	Percentage
CEB Hydro	12.75	31.51%
CEB Thermal Oil	8.18	20.22%
CEB Coal	11.67	28.84%
IPP Thermal	5.18	12.80%
SPP Wind	0.33	0.82%
CEB Wind	0.71	1.75%
SPP Solar	0.33	0.82%
SPP Solid Waste	0.26	0.64%
Mini Hydro	1.05	2.60%
Total	40.46	

For Current Year

Category	Dispatch (GWh)	Percentage
CEB Hydro	2,064.1	27.35%
CEB Thermal Oil	948.3	12.56%
CEB Coal	3,039.9	40.28%
IPP Thermal	876.8	11.62%
SPP Wind	150.2	1.99%
CEB Wind	166.6	2.21%
SPP Solar	46.8	0.62%
SPP Solid Waste	38.8	0.51%
Mini Hydro	216.7	2.87%
Total	7,547.8	

CEB owned Thermal Plant Dispatch

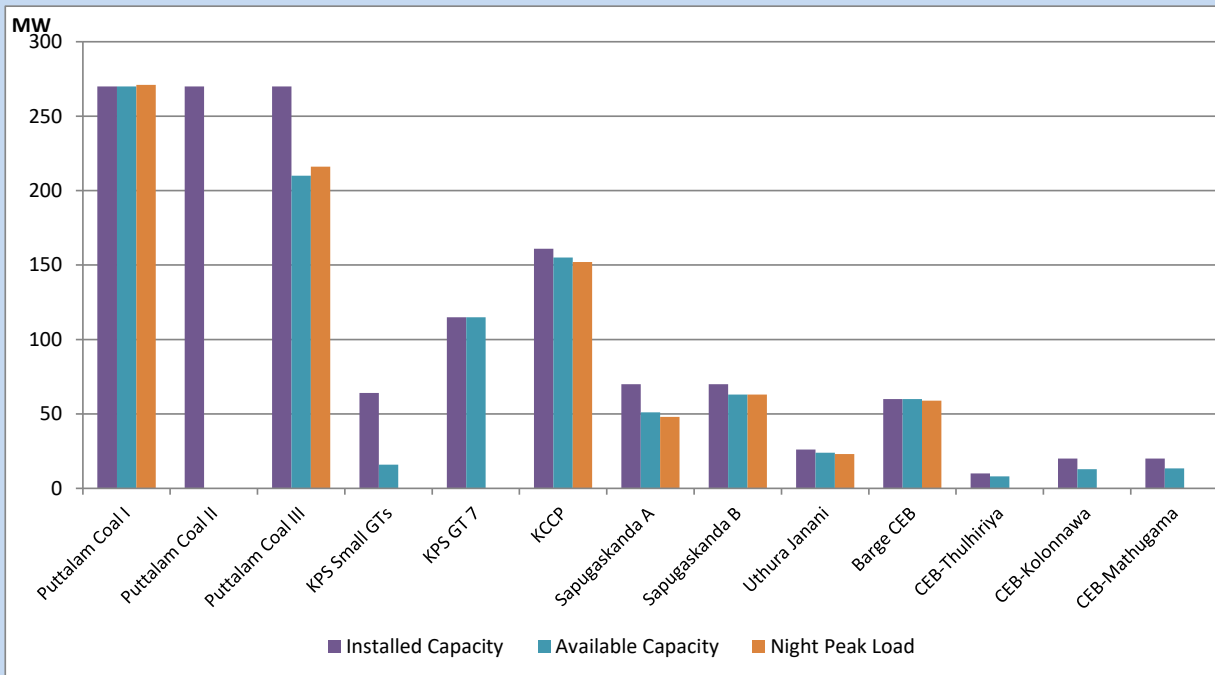
July 1, 2022



Available Generation is estimated based on plant availability at 6.00am on

July 2, 2022

CEB owned Thermal Plant Loading at the Night Peak



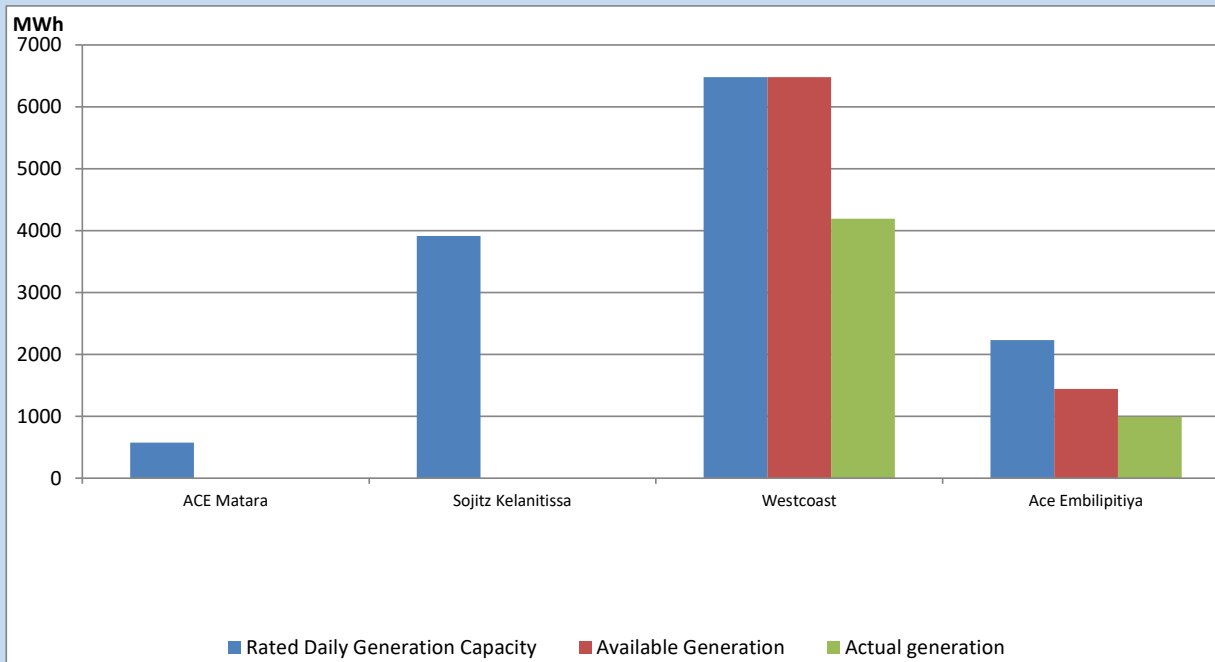
Note- Plant availability is recorded at 6.00 am on

July 2, 2022

IPP owned Thermal Plant Dispatch

July 1, 2022

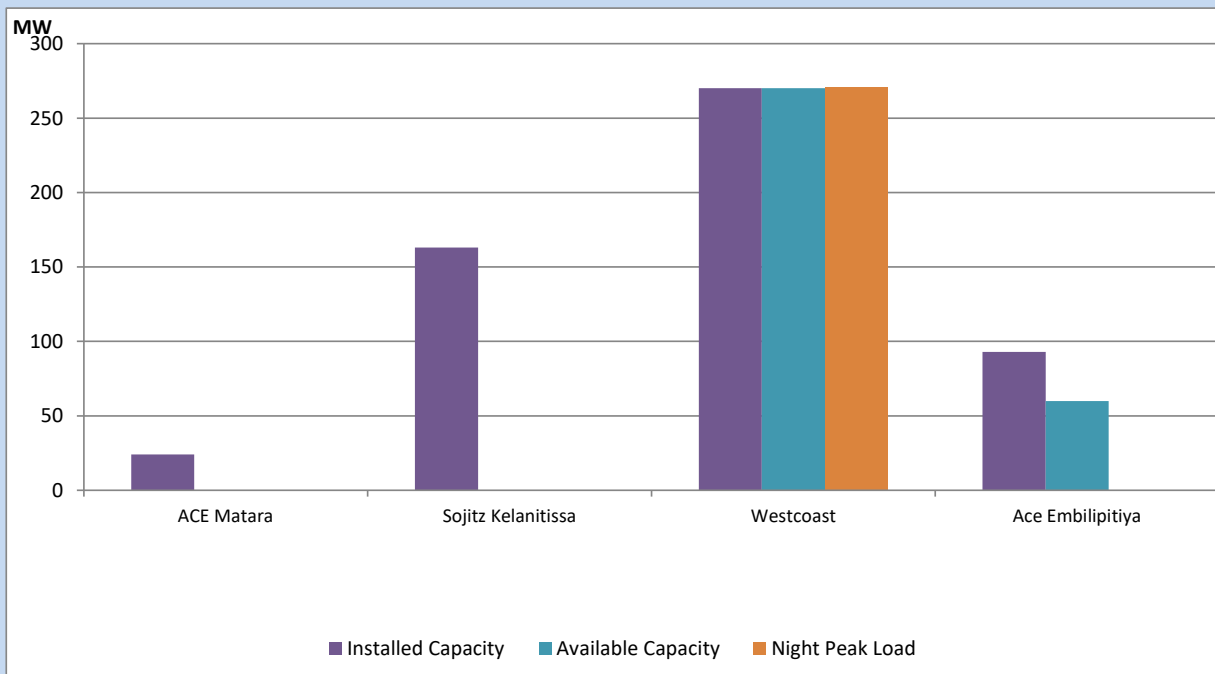
Asia Power, V Power Pallekale, Vpower Galle, V Power Horana, Vpower Hambantota, Vpower Valachchena and Altaqa Mahiyanganaya are not available due to expiration of PPAs



Available Generation is estimated based on plant availability at 6.00am on

July 2, 2022

IPP owned Thermal Plant Loading at the Night Peak

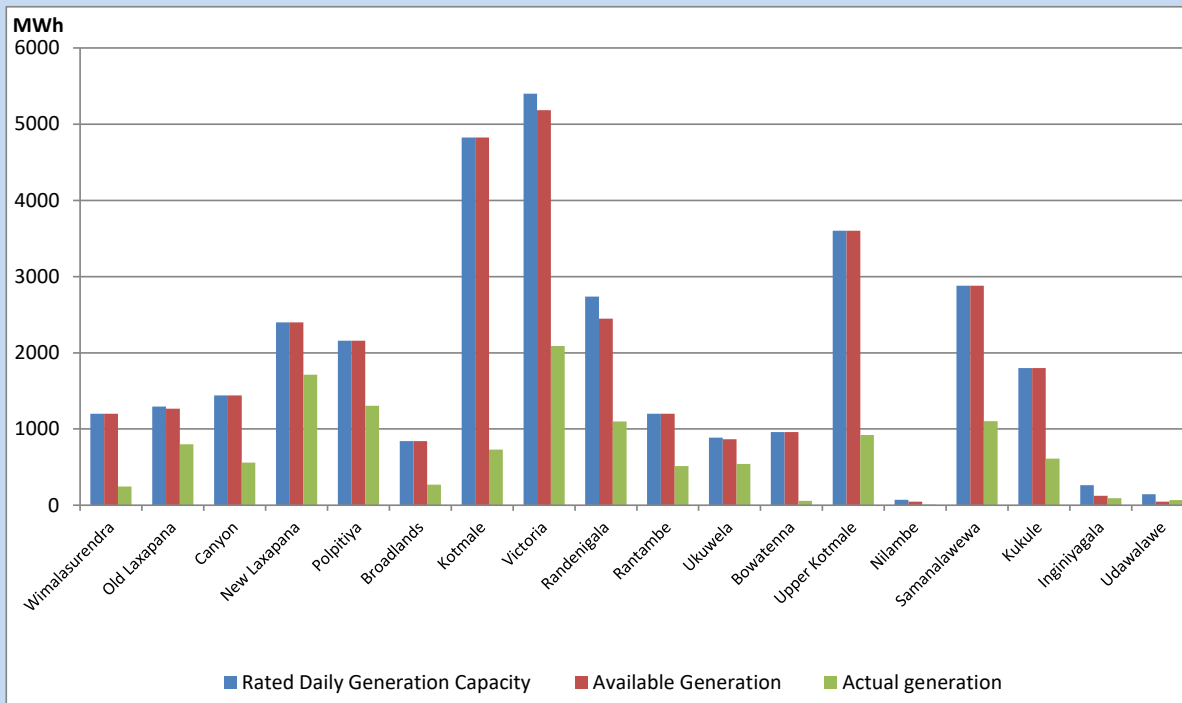


Note- Plant availability is recorded at 6.00 am on

July 2, 2022

Major Hydro Plant Dispatch

July 1, 2022

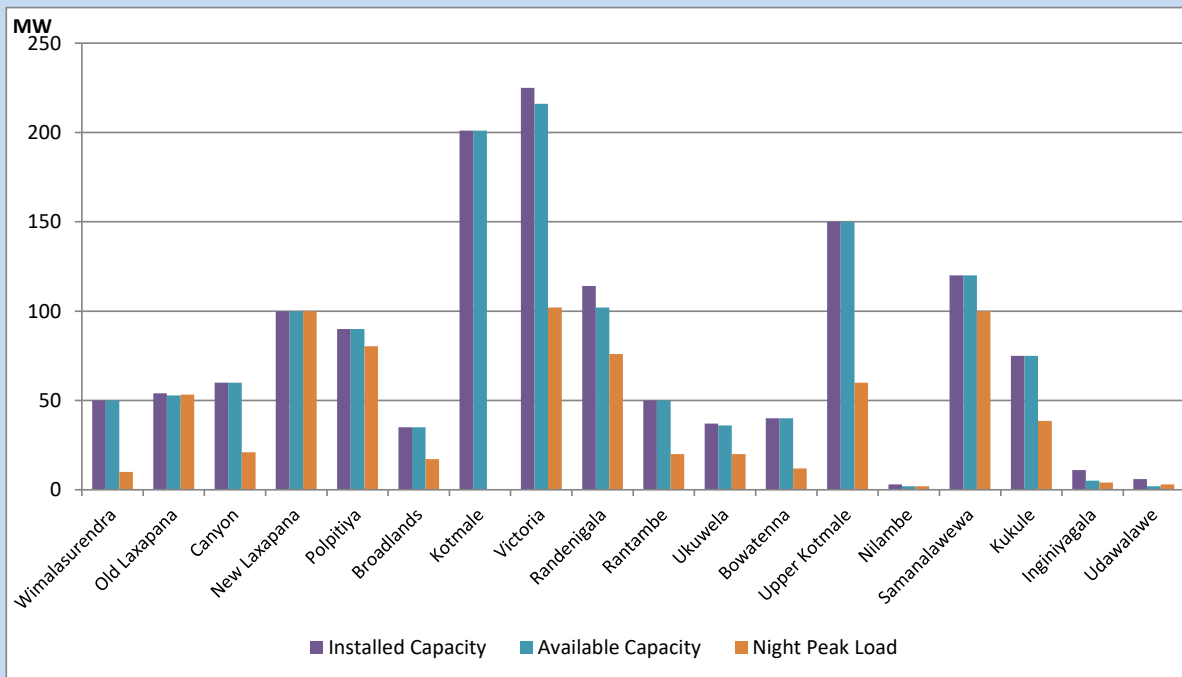


Available Generation is estimated based on plant availability at 6.00am on
Broadlands power plant is operating in the Commissioning Stage

July 2, 2022

Major Hydro Plant Loading at Night Peak

July 1, 2022



Note- Plant availability is recorded at 6.00 am on
Broadlands power plant is operating in the Commissioning Stage

July 2, 2022

Summary of Major Plant performance

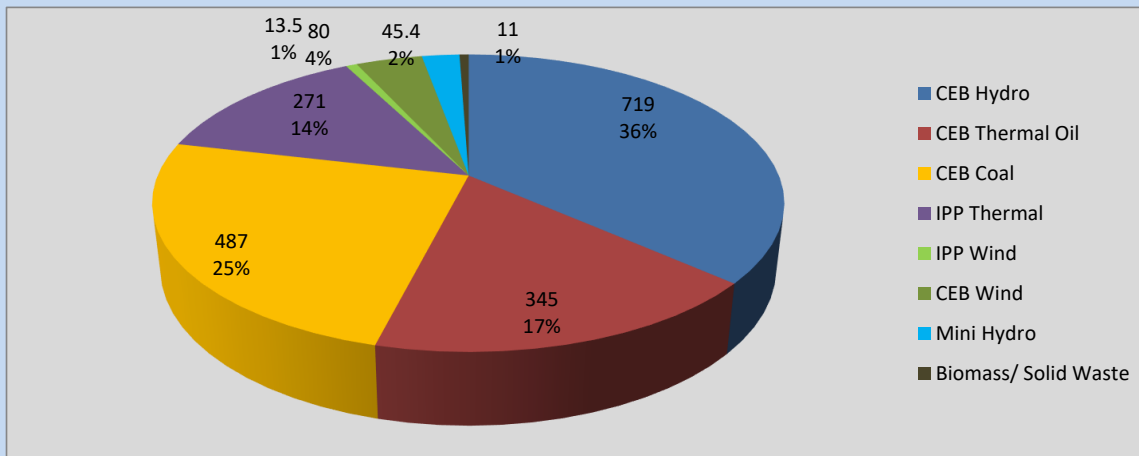
Plant	Installed Capacity	Plant Availability	Night peak Load	Plant Dispatch
	(MW)	(MW)	(MW)	(MWh)
Wimalasurendra	50	50	10	247
Old Laxapana	54	53	53	800
Canyon	60	60	21	560
New Laxapana	100	100	100	1,714
Polpitiya	90	90	80	1,305
Broadlands	35	35	17	271
Kotmale	201	201	0	730
Victoria	225	216	102	2,090
Randenigala	114	102	76	1,099
Rantambe	50	50	20	515
Ukuwela	37	36	20	542
Bowatenna	40	40	12	58
Upper Kotmale	150	150	60	922
Nilambe	3	2	2	9
Samanalawewa	120	120	100	1,103
Kukule	75	75	39	613
Inginiyagala	11	5	4	92
Udawalawe	6	2	3	69
Puttalam Coal I	270	270	271	6,472
Puttalam Coal II	270	0	0	0
Puttalam Coal III	270	210	216	5,202
KPS Small GTs	64	16	0	0
KPS GT 7	115	115	0	0
KCCP	161	155	152	3,748
Sapugaskanda A	70	51	48	1,143
Sapugaskanda B	70	63	63	1,501
Uthura Janani	26	24	23	362
Barge CEB	60	60	59	1,428
CEB-Thulhiriya	10	8	0	0
CEB-Kolonnawa	20	13	0	0
CEB-Mathugama	20	14	0	0
ACE Matara	24	0	0	0
Sojitz Kelanitissa	163	0	0	0
West Coast	270	270	271	4,191
ACE Embilipitiya	93	60	0	992
Total	3,397	2,715	1,972	40,466

Plant availability is the availability recorded at 6 am on

July 2, 2022

Contribution to the Night Peak in MW

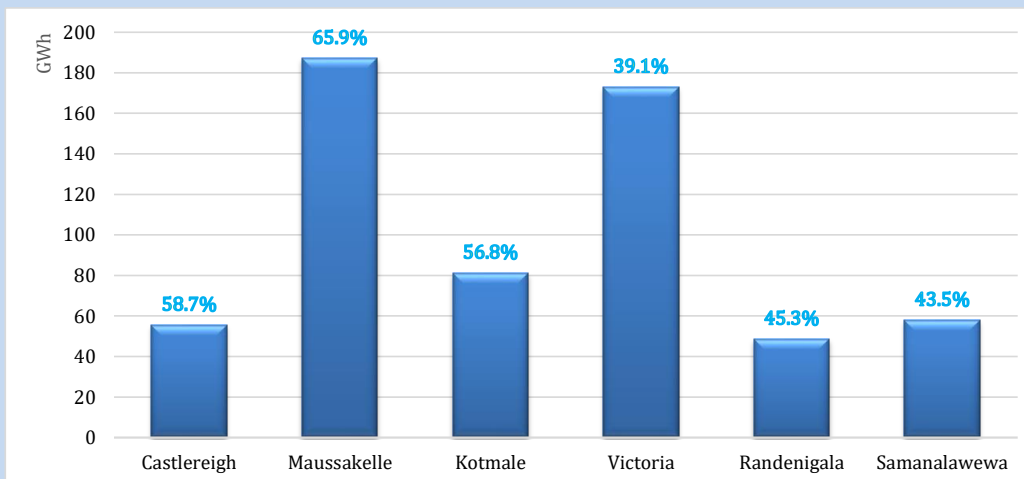
July 1, 2022



Night Peak*	1,972.3 MW
Day Peak	1,970.8 MW
Minimum Demand	1,347.6 MW

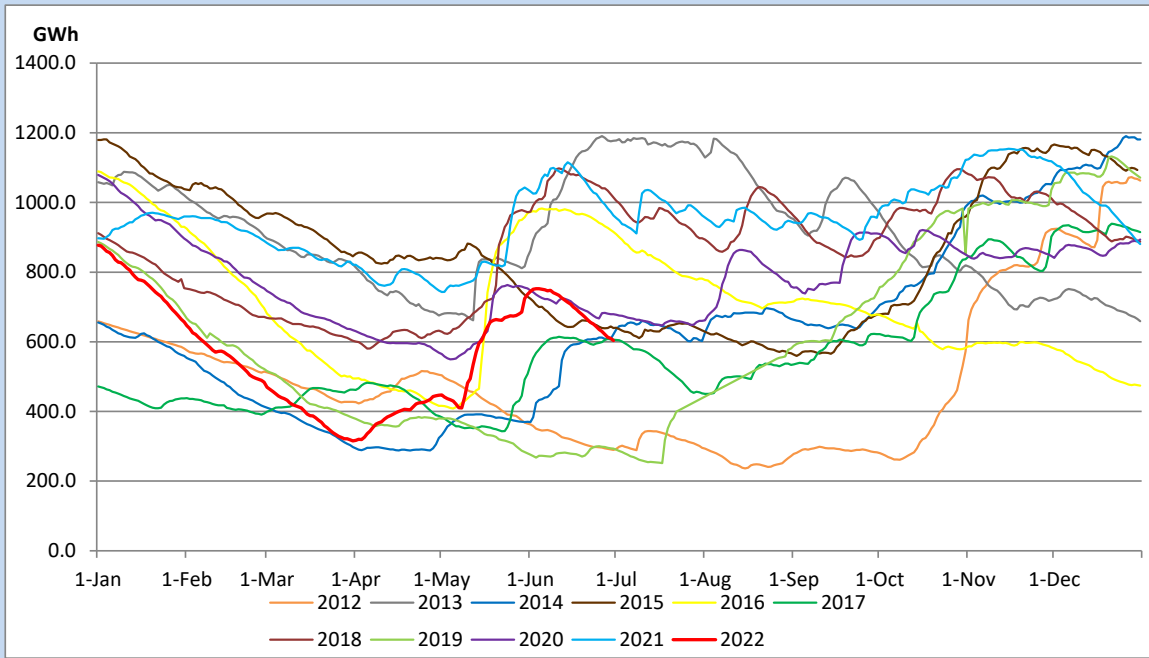
Above figures are excluding contribution from Roof Top Solar, 1MW solar, certain Wind plants and Mini Hydro plants

Reservoir Levels - as at 06.00 Hr on July 2, 2022

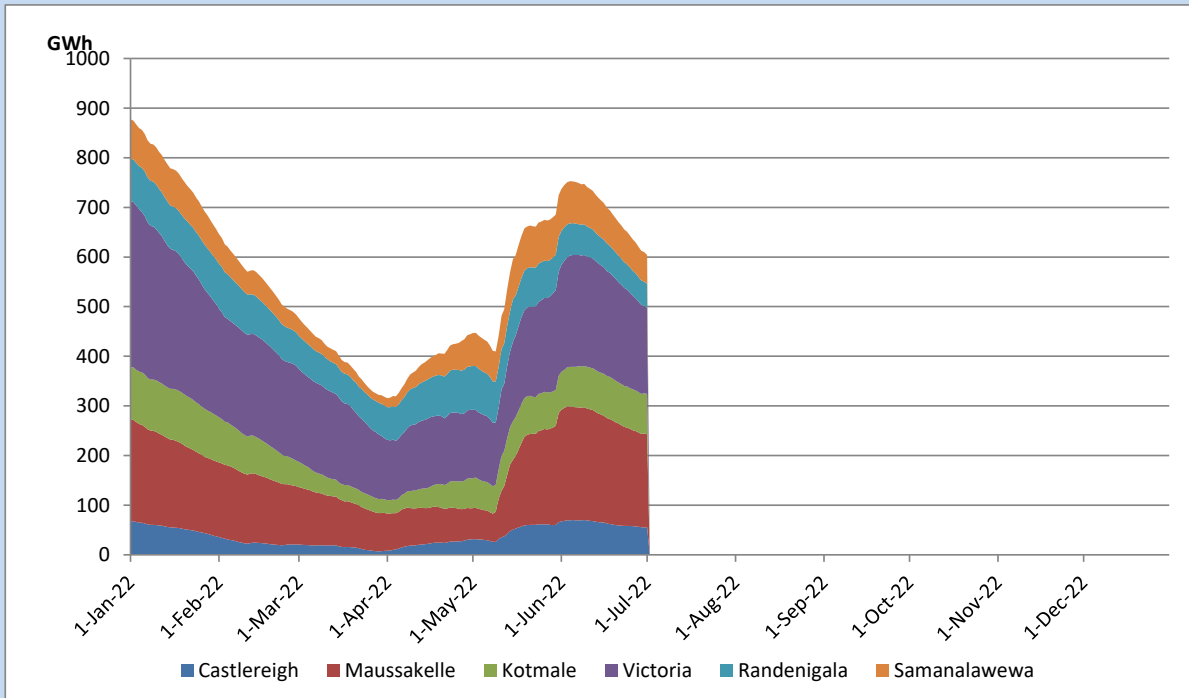


Total Reservoir Level	603.9 GWh
% of Total capacity	50.1%

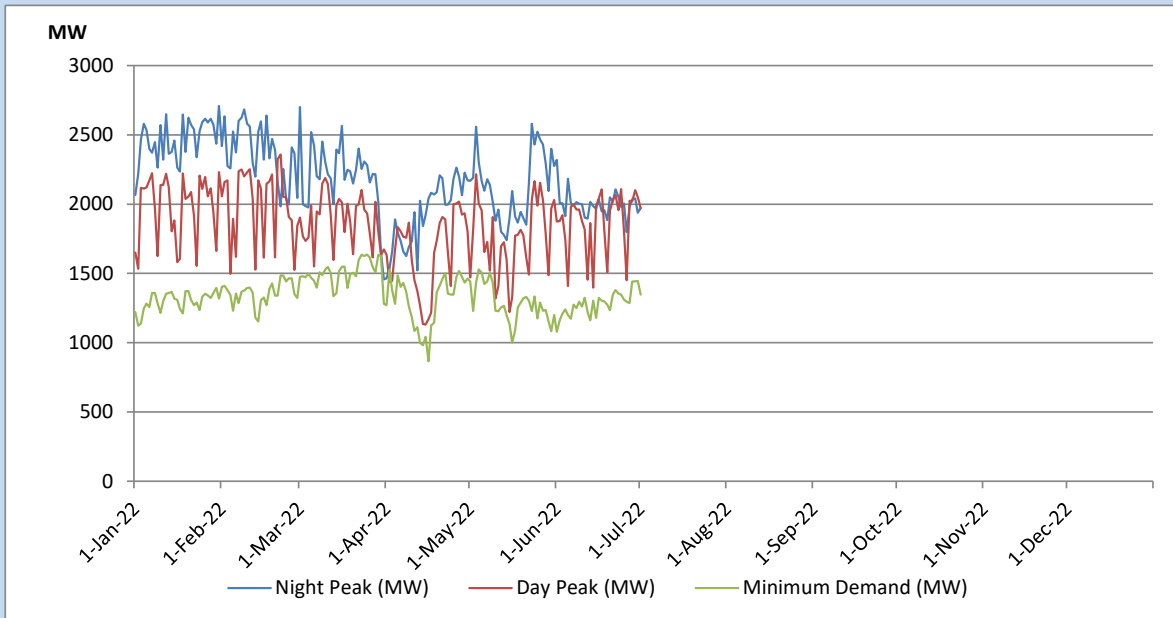
Comparison of Total Reservoir Storage Levels with Past Years



Variation of Major Hydro Reservoir Levels in the current year (GWh)



Variation of Demand during the current year

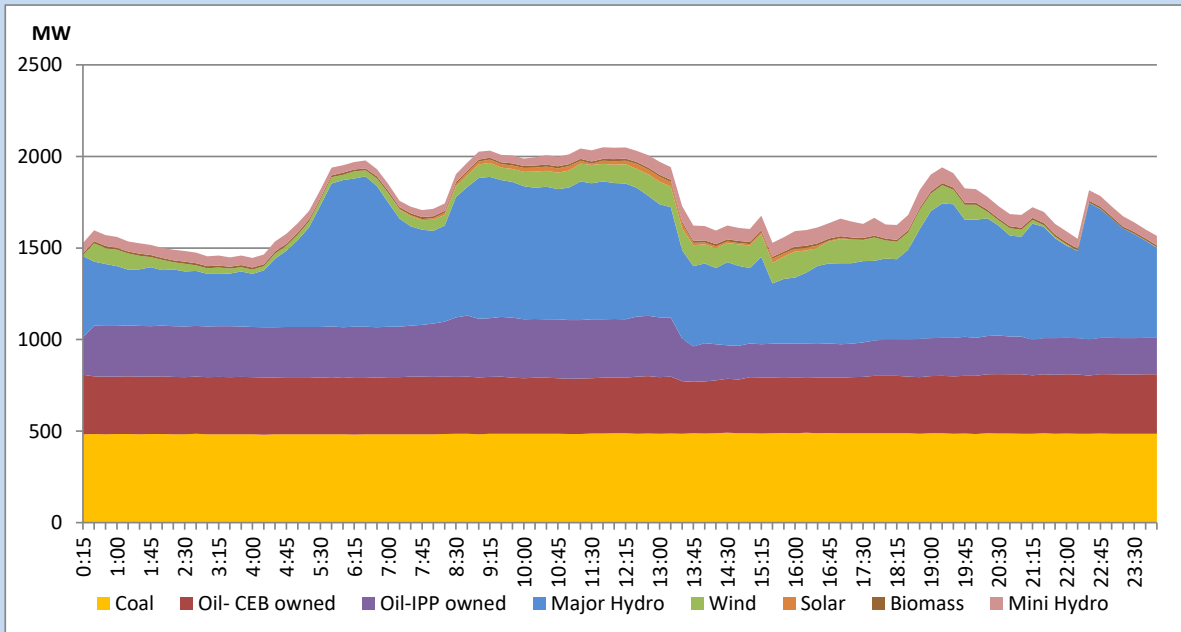


The above figures are excluding contribution from Roof Top Solar, 1MW solar, certain Wind plants and Mini Hydro plants

Daily Load Curve of the Previous day

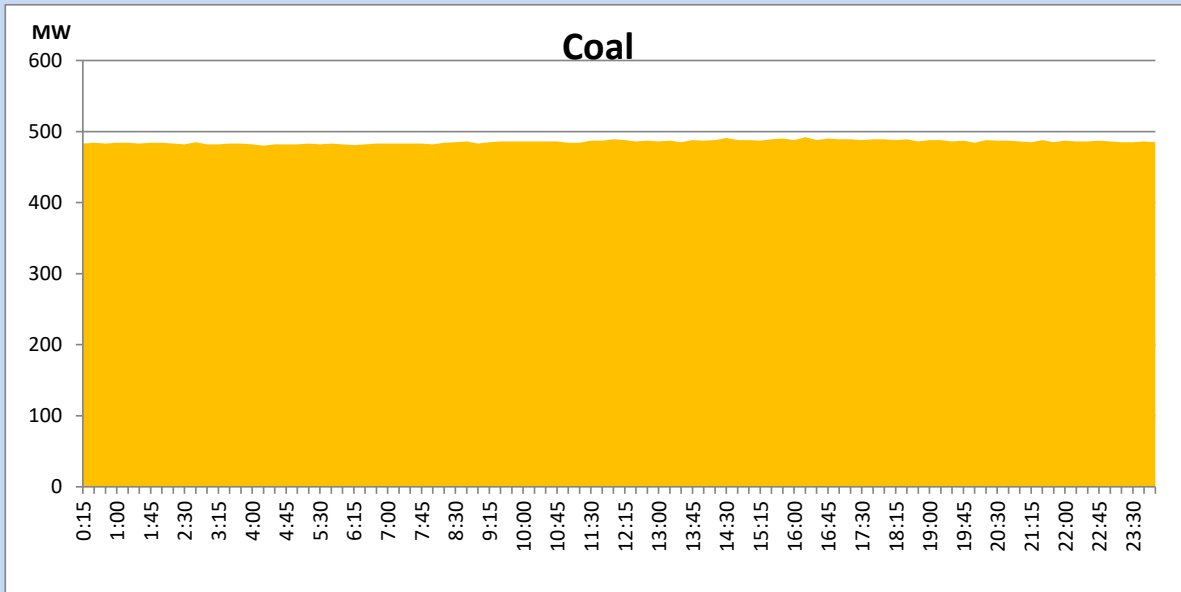
June 30, 2022

Solar and wind data is based on Telemetered Power Stations only



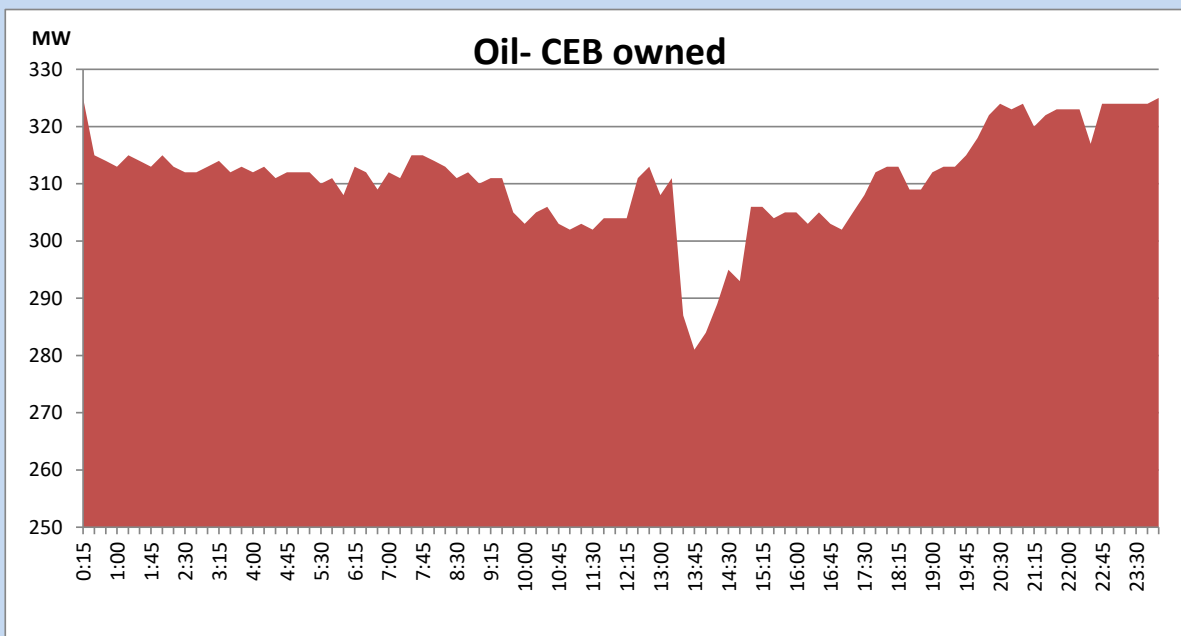
Coal Generation during the Previous day

June 30, 2022



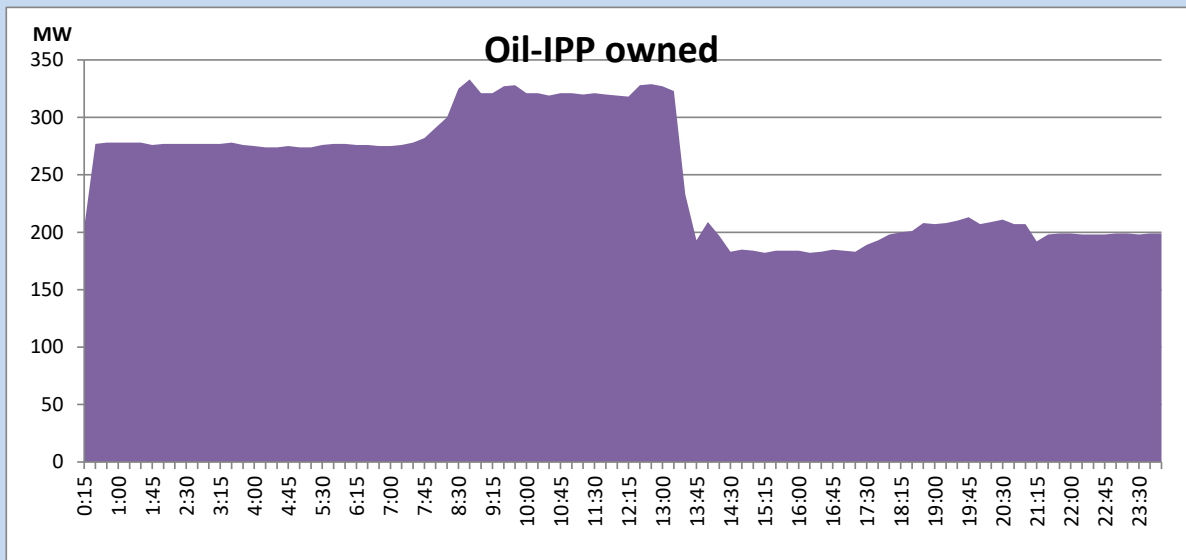
CEB Oil Plant Generation during the Previous day

June 30, 2022



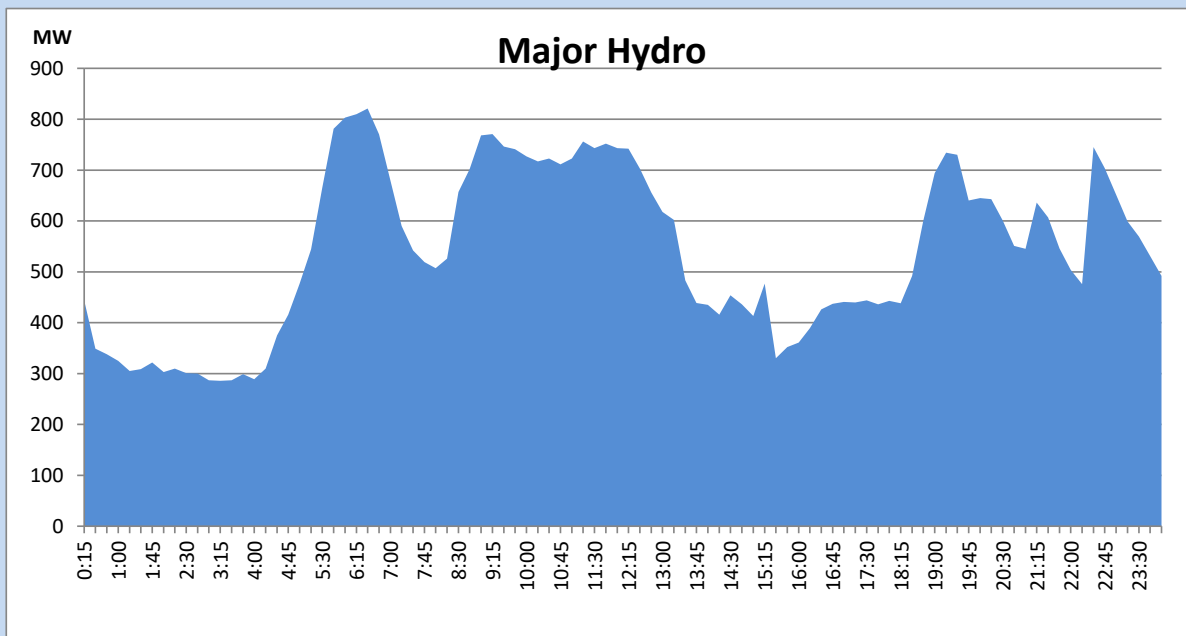
IPP Oil Plant Generation during the Previous day

June 30, 2022



Major Hydro Generation during the Previous day

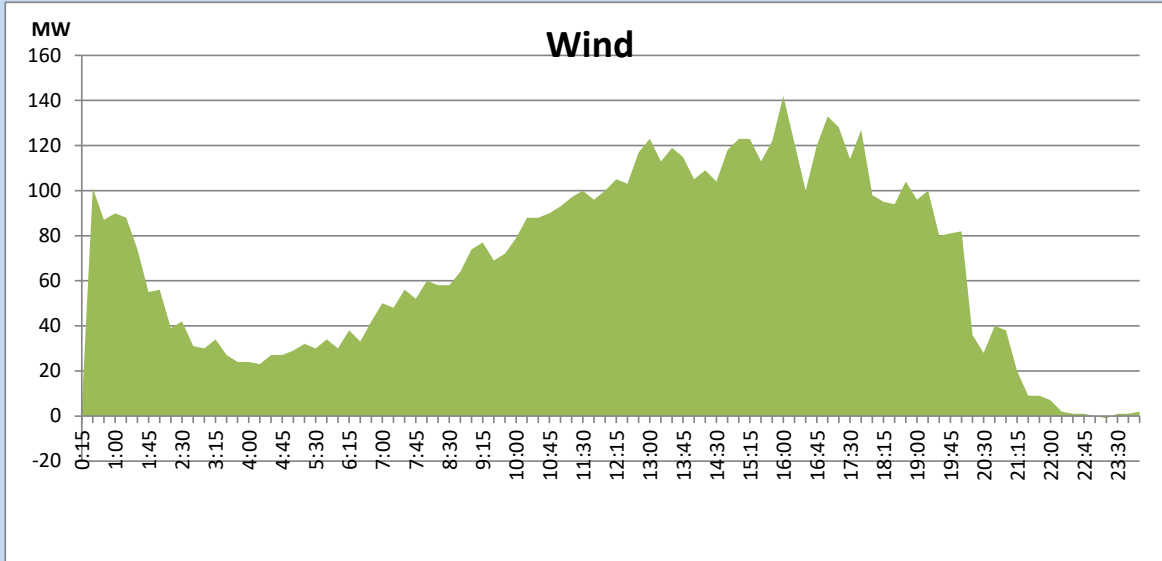
June 30, 2022



Wind Generation during the Previous day

June 30, 2022

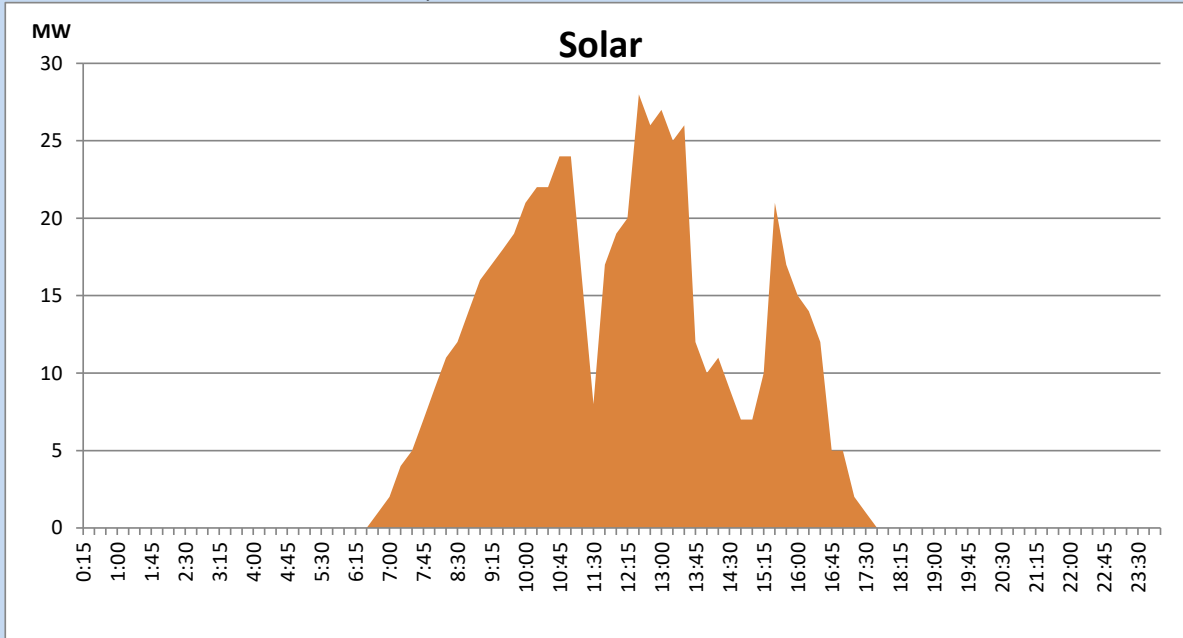
Based on Telemetered Power Stations only



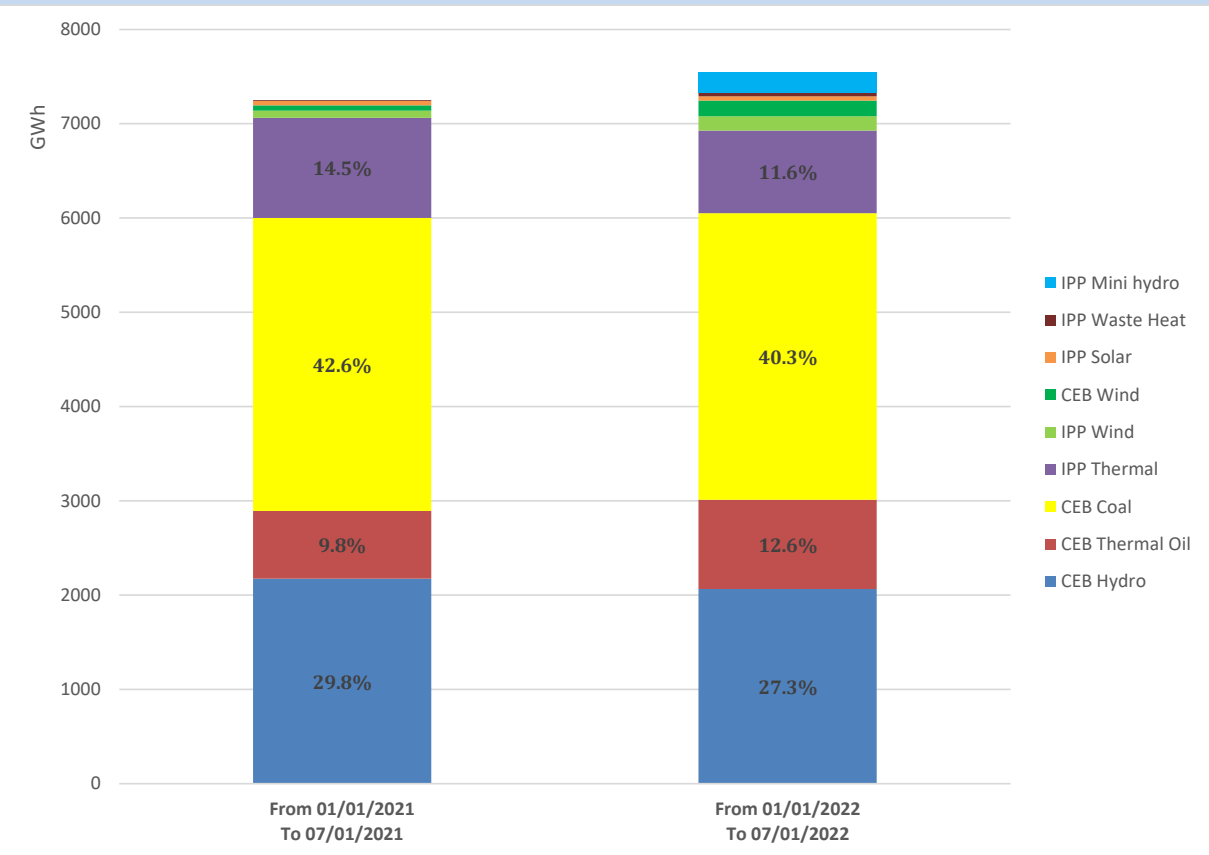
Solar Generation during the Previous day

June 30, 2022

Based on Telemetered Power Stations only



Cumulative Dispatch Comparison with Last Year



Thermal Plant Fuel types

Power Station	Primary Fuel
CEB Thermal	
Sapugaskanda 1	Heavy Fuel
Sapugaskanda 2	Heavy Fuel
Kelanitissa Small Gas Turbines	Auto Diesel
GT 7 - Kelanitissa	Auto Diesel
Kelanitissa CCY	Naphtha or Diesel
Lakvijaya 1	Coal
Lakvijaya 2	Coal
Lakvijaya 3	Coal
Uthuru Janani	Heavy Fuel
Barge CEB	Heavy Fuel

Power Station	Primary Fuel
Private Thermal	
Sojitz - Kelanitissa	Auto Diesel
West Coast	Auto Diesel / Heavy Fuel
ACE Matara	Heavy Fuel
ACE Embilipitiya	Heavy Fuel

Major Incidents during the day -as reported by CEB morning of

July 2, 2022

- 1) Rotational manual load shedding was carried out from 5:00 hrs to 8:00 hrs and 13:00hrs to 22:00hrs.
- 2) Rantambe gen 01 tripped at 1:08 hrs on 02/07/2022. The m/c made available at 1:48 hrs.