

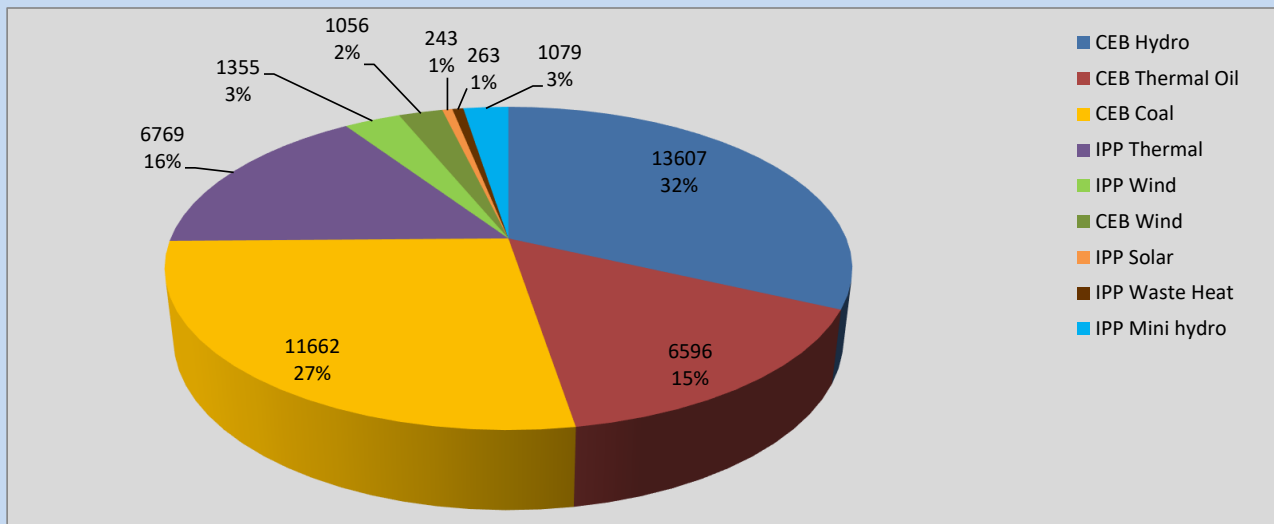
Generation and Reservoirs Statistics

June 28, 2022



PUBLIC UTILITIES COMMISSION OF SRI LANKA

Daily Generation Mix in MWh



Total Generation **42,630 MWh**

Note: Above data is excluding contribution from Roof Top Solar, 1MW Solar and certain Mini Hydro plants

Cumulative Dispatch

Note: Following data is Excluding contribution from Roof Top Solar, 1MW solar and Mini Hydro plants

For Current Month

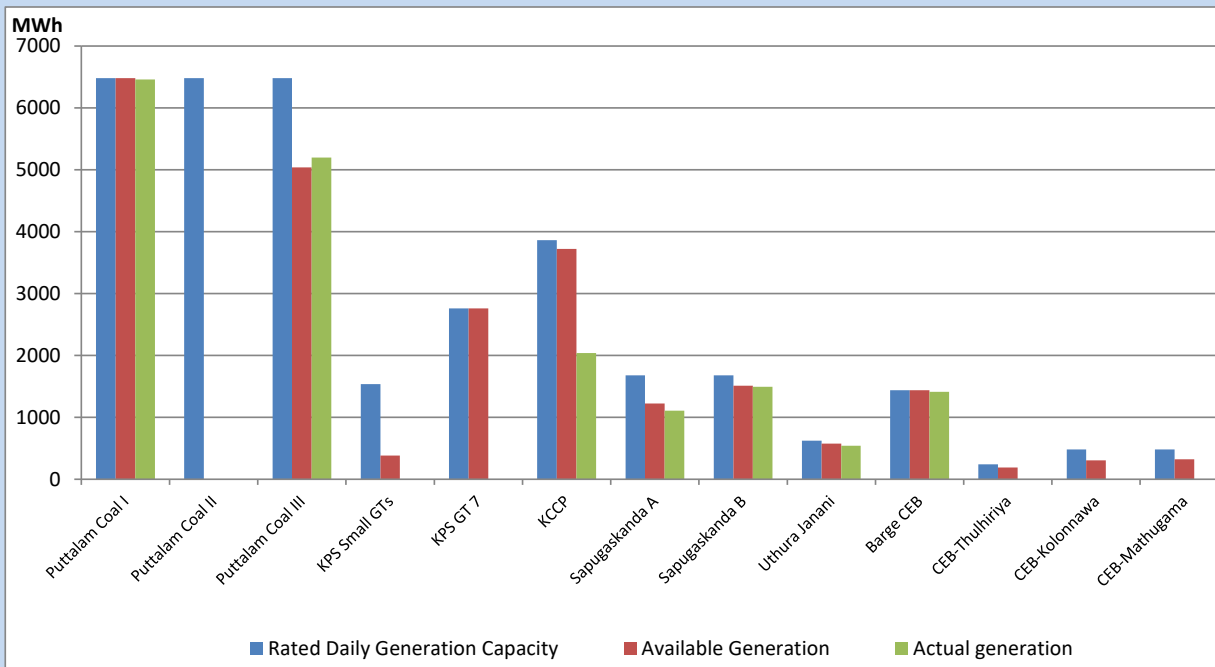
Category	Dispatch (GWh)	
CEB Hydro	415.15	36.78%
CEB Thermal Oil	66.54	5.90%
CEB Coal	438.66	38.87%
IPP Thermal	50.65	4.49%
SPP Wind	47.12	4.18%
CEB Wind	47.45	4.20%
SPP Solar	6.78	0.60%
SPP Solid Waste	6.67	0.59%
Mini Hydro	49.60	4.39%
Total	1,128.62	

For Current Year

Category	Dispatch (GWh)	
CEB Hydro	2,024.2	27.27%
CEB Thermal Oil	925.0	12.46%
CEB Coal	3,004.9	40.48%
IPP Thermal	859.1	11.58%
SPP Wind	148.1	1.99%
CEB Wind	164.2	2.21%
SPP Solar	45.8	0.62%
SPP Solid Waste	38.0	0.51%
Mini Hydro	213.3	2.87%
Total	7,422.4	

CEB owned Thermal Plant Dispatch

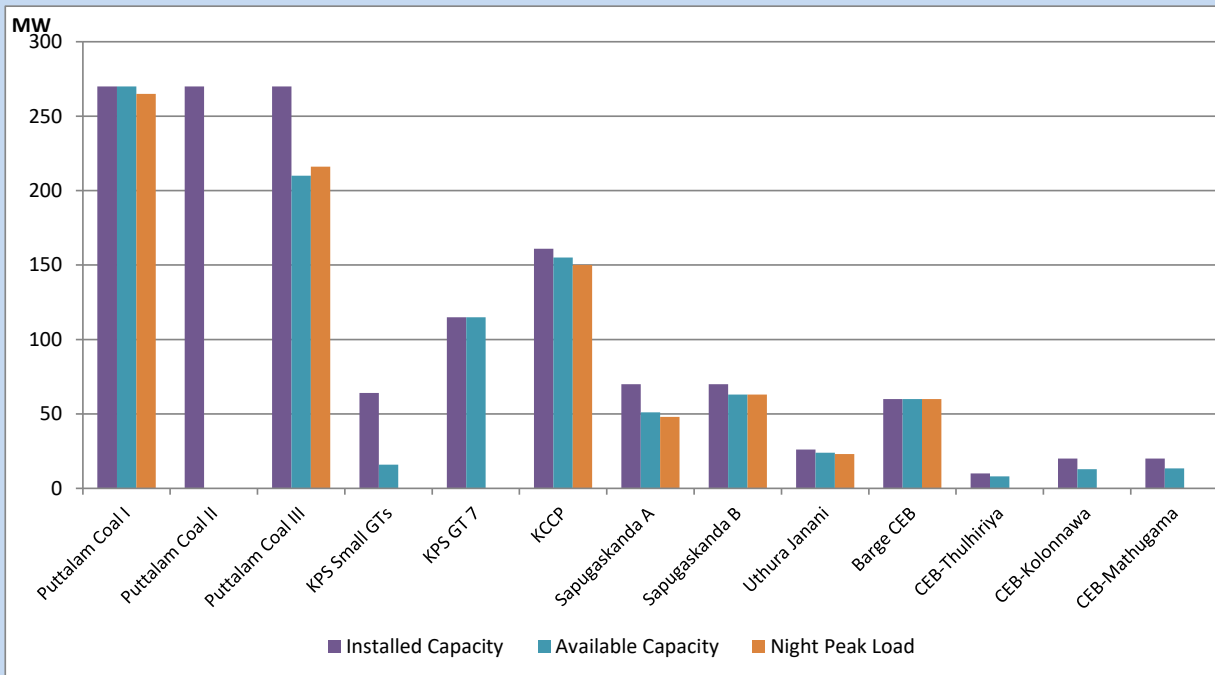
June 28, 2022



Available Generation is estimated based on plant availability at 6.00am on

June 29, 2022

CEB owned Thermal Plant Loading at the Night Peak



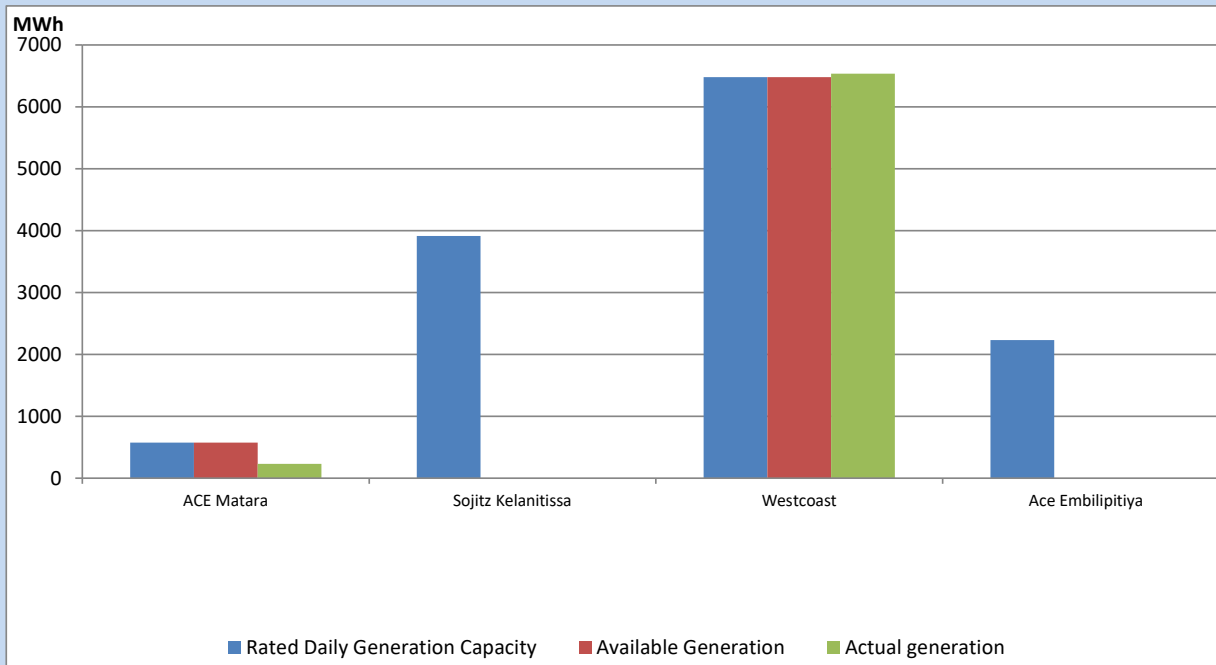
Note- Plant availability is recorded at 6.00 am on

June 29, 2022

IPP owned Thermal Plant Dispatch

June 28, 2022

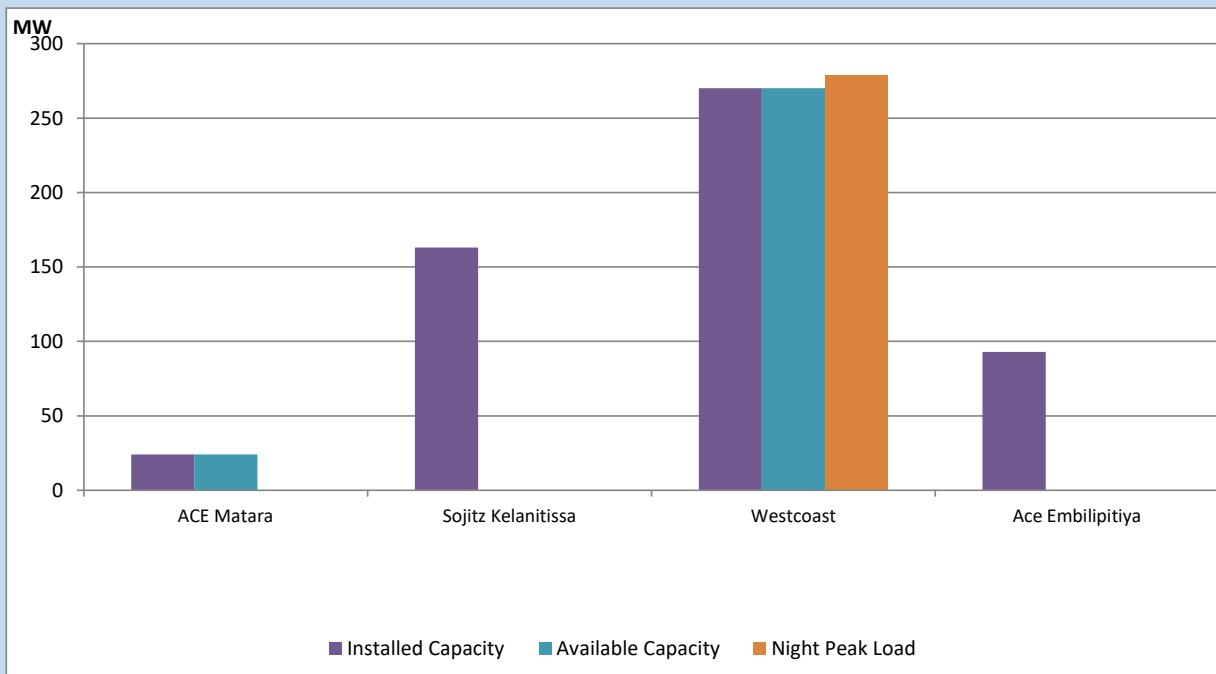
Asia Power, V Power Pallekale, Vpower Galle, V Power Horana, Vpower Hambantota, Vpower Valachchena and Altaqa Mahiyanganaya are not available due to expiration of PPAs



Available Generation is estimated based on plant availability at 6.00am on

June 29, 2022

IPP owned Thermal Plant Loading at the Night Peak

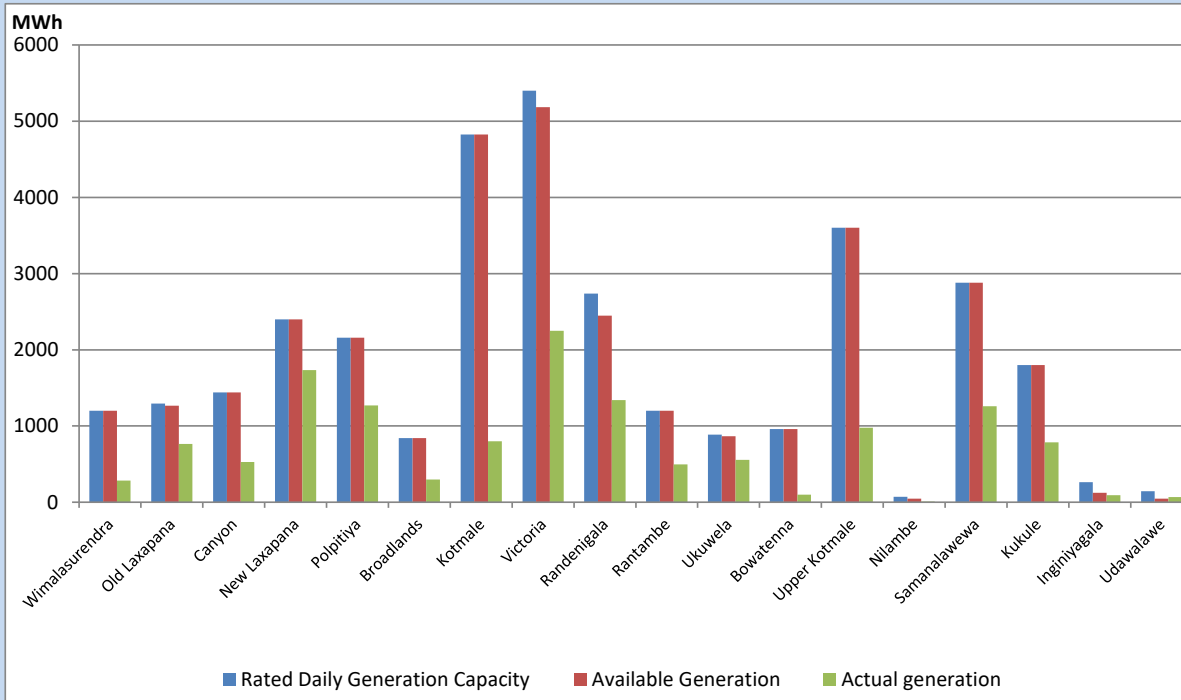


Note- Plant availability is recorded at 6.00 am on

June 29, 2022

Major Hydro Plant Dispatch

June 28, 2022

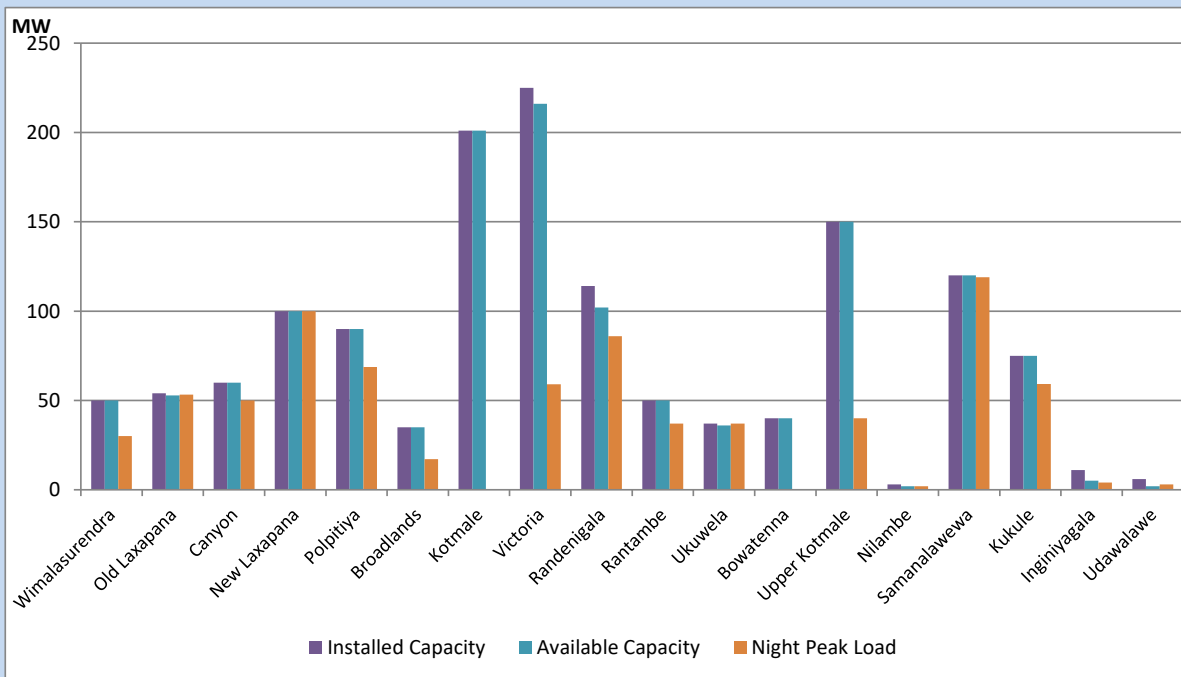


Available Generation is estimated based on plant availability at 6.00am on
Broadlands power plant is operating in the Commissioning Stage

June 29, 2022

Major Hydro Plant Loading at Night Peak

June 28, 2022



Note- Plant availability is recorded at 6.00 am on
Broadlands power plant is operating in the Commissioning Stage

June 29, 2022

Summary of Major Plant performance

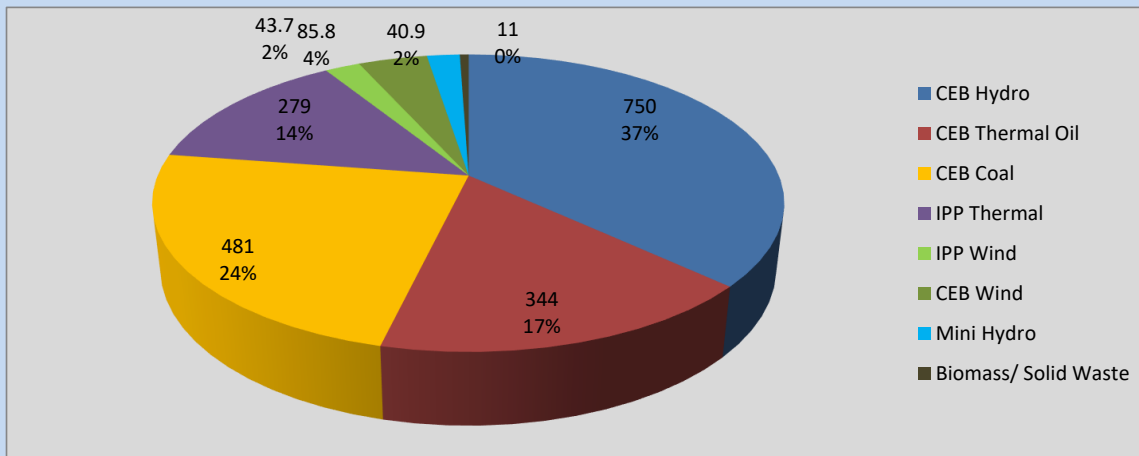
Plant	Installed Capacity	Plant Availability	Night peak Load	Plant Dispatch
	(MW)	(MW)	(MW)	(MWh)
Wimalasurendra	50	50	30	284
Old Laxapana	54	53	53	765
Canyon	60	60	50	526
New Laxapana	100	100	100	1,735
Polpitiya	90	90	69	1,271
Broadlands	35	35	17	298
Kotmale	201	201	0	800
Victoria	225	216	59	2,248
Randenigala	114	102	86	1,341
Rantambe	50	50	37	495
Ukuwela	37	36	37	555
Bowatenna	40	40	0	100
Upper Kotmale	150	150	40	976
Nilambe	3	2	2	7
Samanalawewa	120	120	119	1,260
Kukule	75	75	59	784
Inginiyagala	11	5	4	93
Udawalawe	6	2	3	69
Puttalam Coal I	270	270	265	6,462
Puttalam Coal II	270	0	0	0
Puttalam Coal III	270	210	216	5,200
KPS Small GTs	64	16	0	0
KPS GT 7	115	115	0	0
KCCP	161	155	150	2,039
Sapugaskanda A	70	51	48	1,110
Sapugaskanda B	70	63	63	1,495
Uthura Janani	26	24	23	541
Barge CEB	60	60	60	1,411
CEB-Thulhiriya	10	8	0	0
CEB-Kolonnawa	20	13	0	0
CEB-Mathugama	20	14	0	0
ACE Matara	24	24	0	233
Sojitz Kelanitissa	163	0	0	0
West Coast	270	270	279	6,536
ACE Embilipitiya	93	0	0	0
Total	3,397	2,679	2,051	42,630

Plant availability is the availability recorded at 6 am on

June 29, 2022

Contribution to the Night Peak in MW

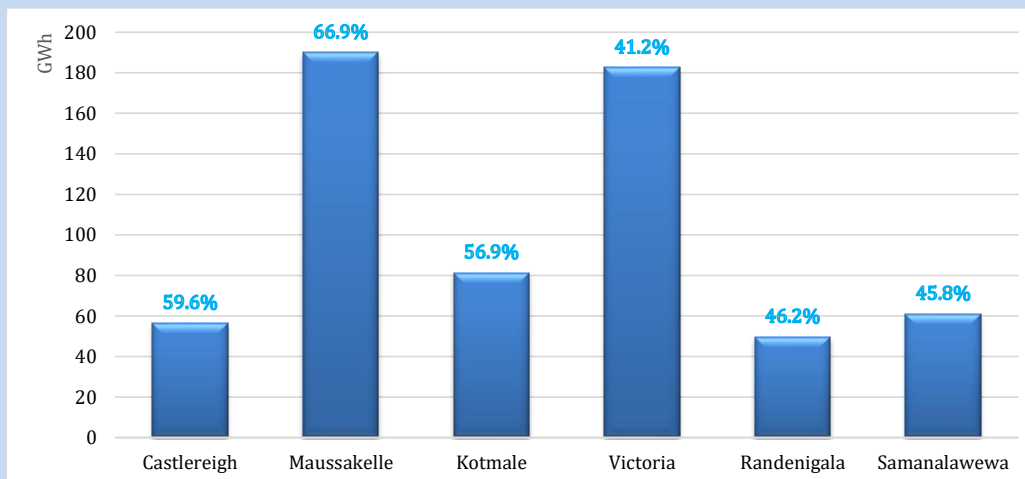
June 28, 2022



Night Peak*	2,034.9 MW
Day Peak	2,019.5 MW
Minimum Demand	1,440.7 MW

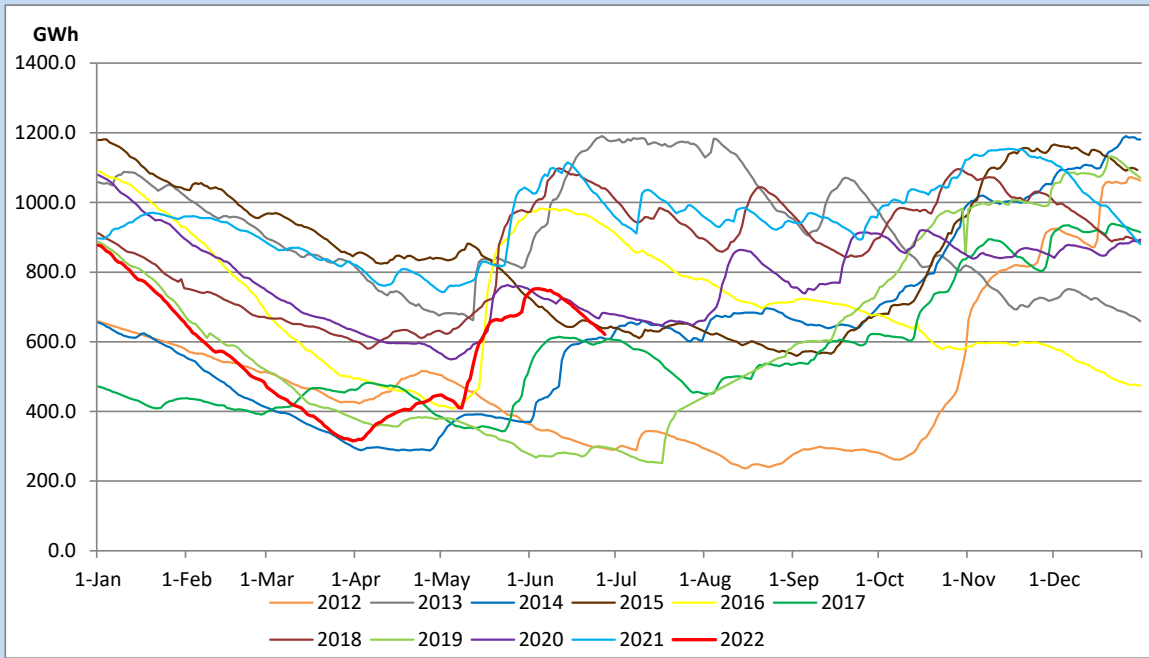
Above figures are excluding contribution from Roof Top Solar, 1MW solar, certain Wind plants and Mini Hydro plants

Reservoir Levels - as at 06.00 Hr on June 29, 2022

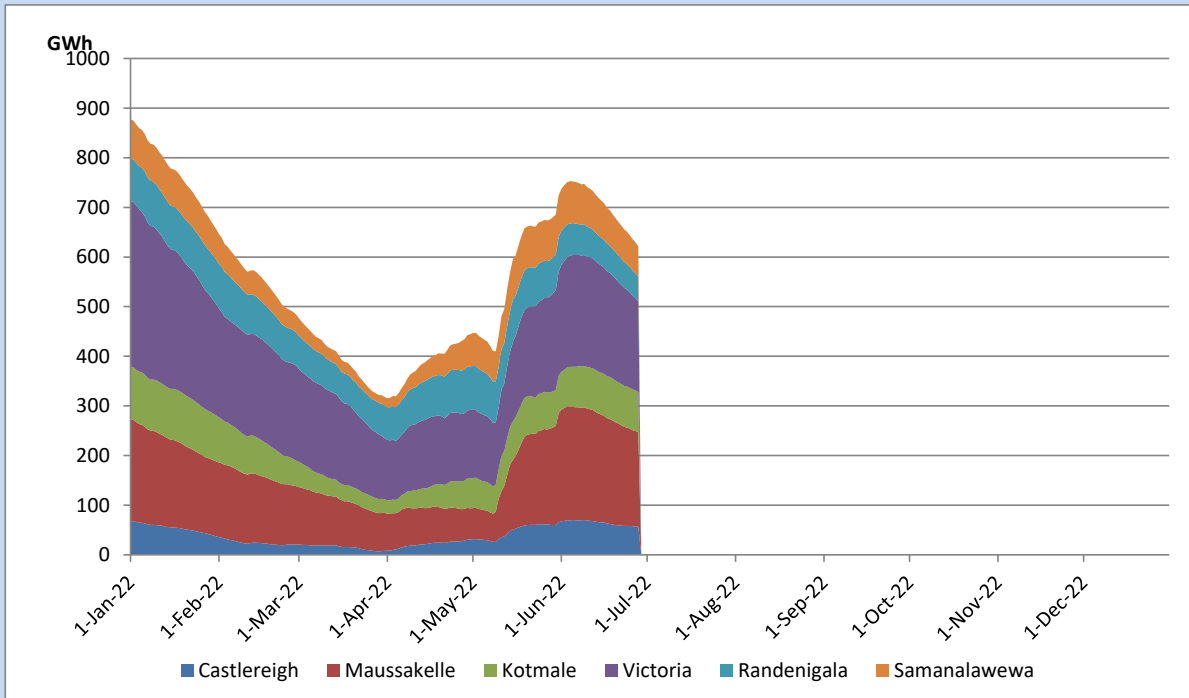


Total Reservoir Level	621.1 GWh
% of Total capacity	51.5%

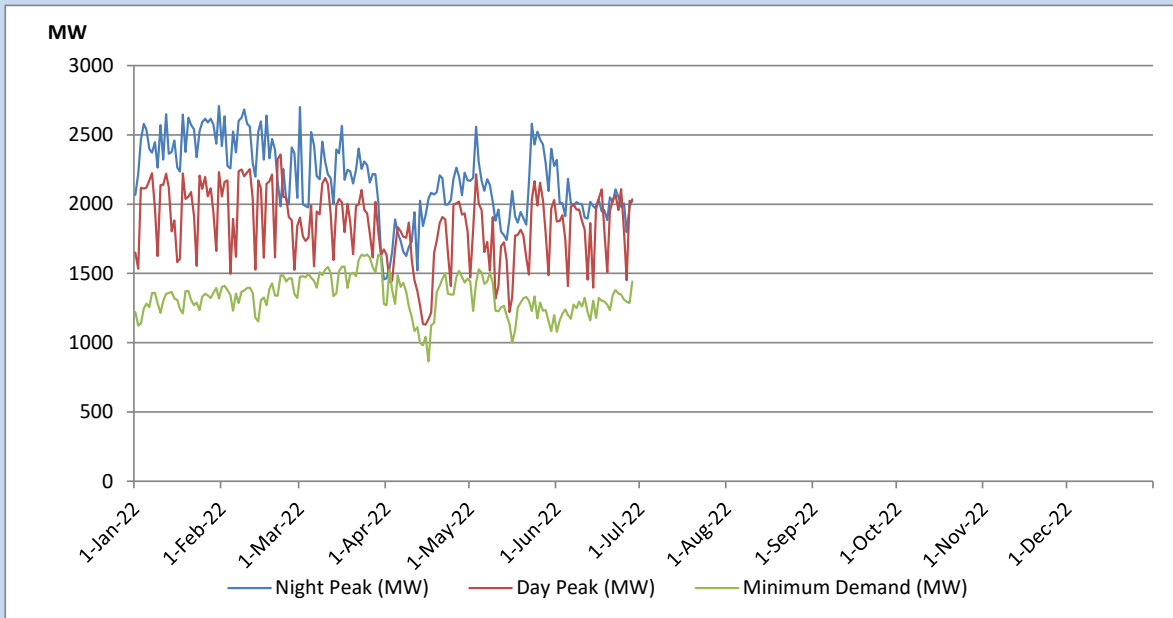
Comparison of Total Reservoir Storage Levels with Past Years



Variation of Major Hydro Reservoir Levels in the current year (GWh)



Variation of Demand during the current year

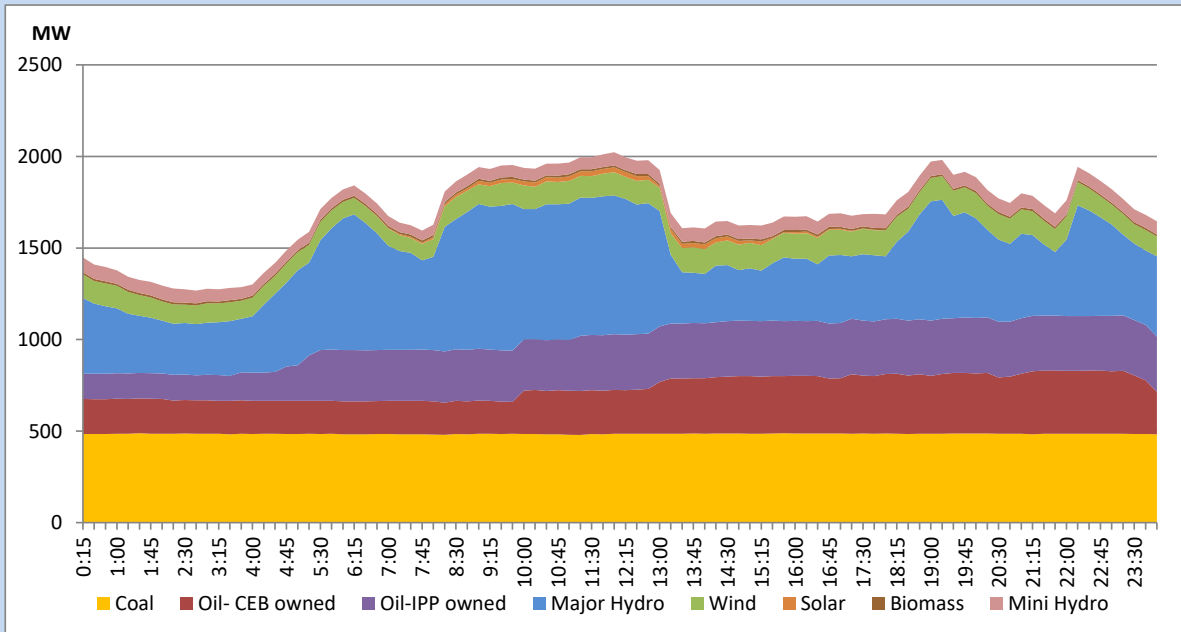


The above figures are excluding contribution from Roof Top Solar, 1MW solar, certain Wind plants and Mini Hydro plants

Daily Load Curve of the Previous day

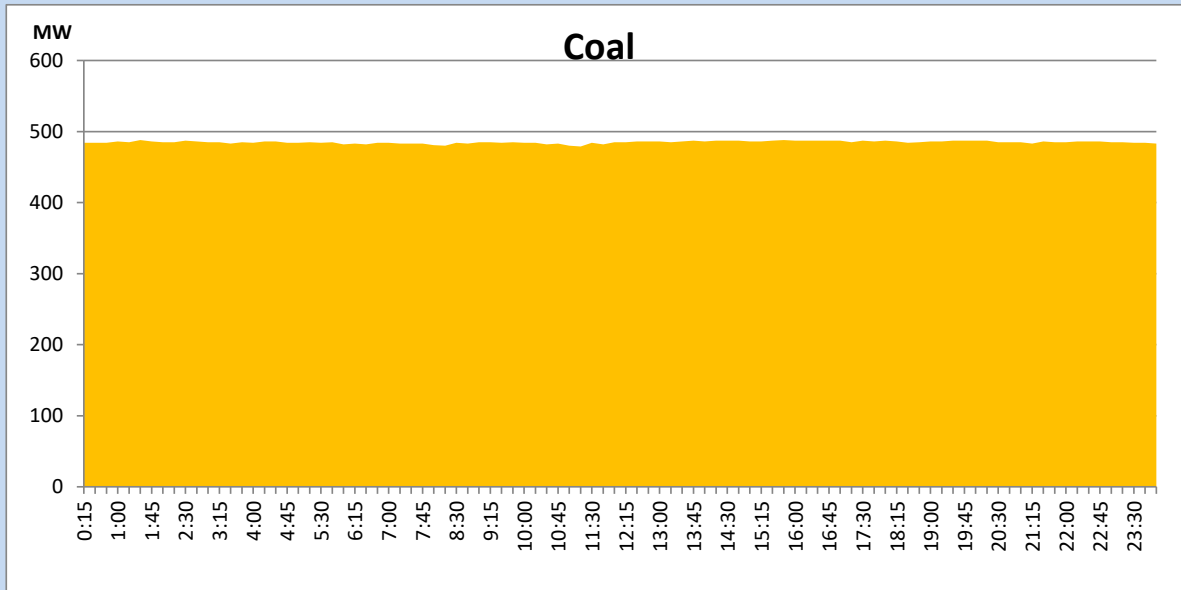
June 27, 2022

Solar and wind data is based on Telemetered Power Stations only



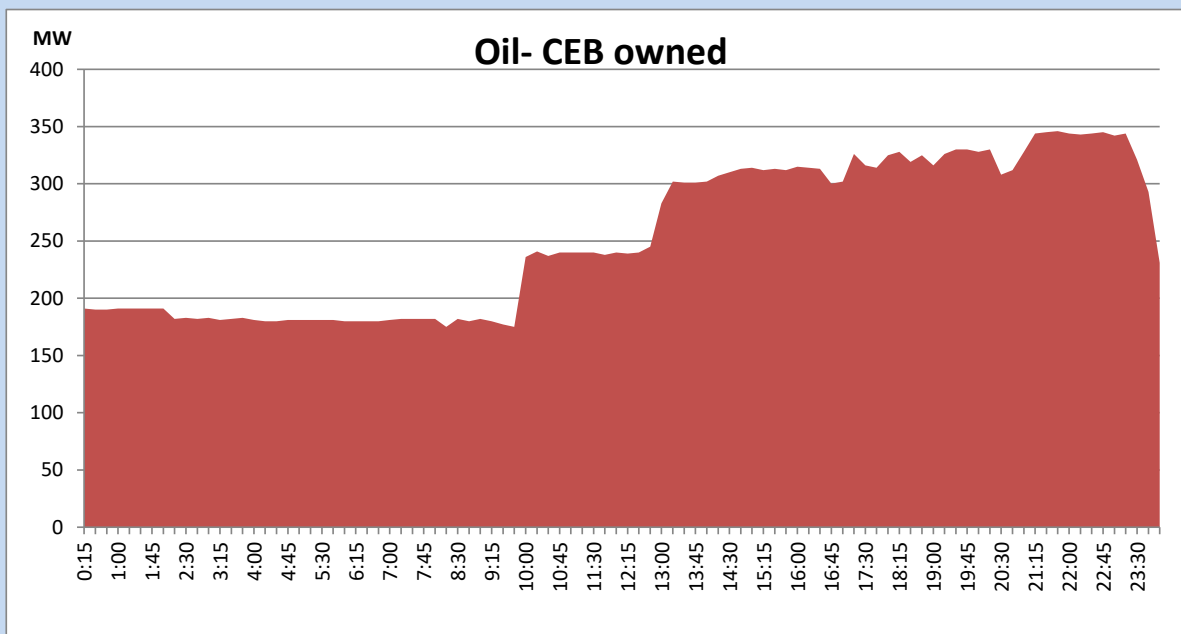
Coal Generation during the Previous day

June 27, 2022



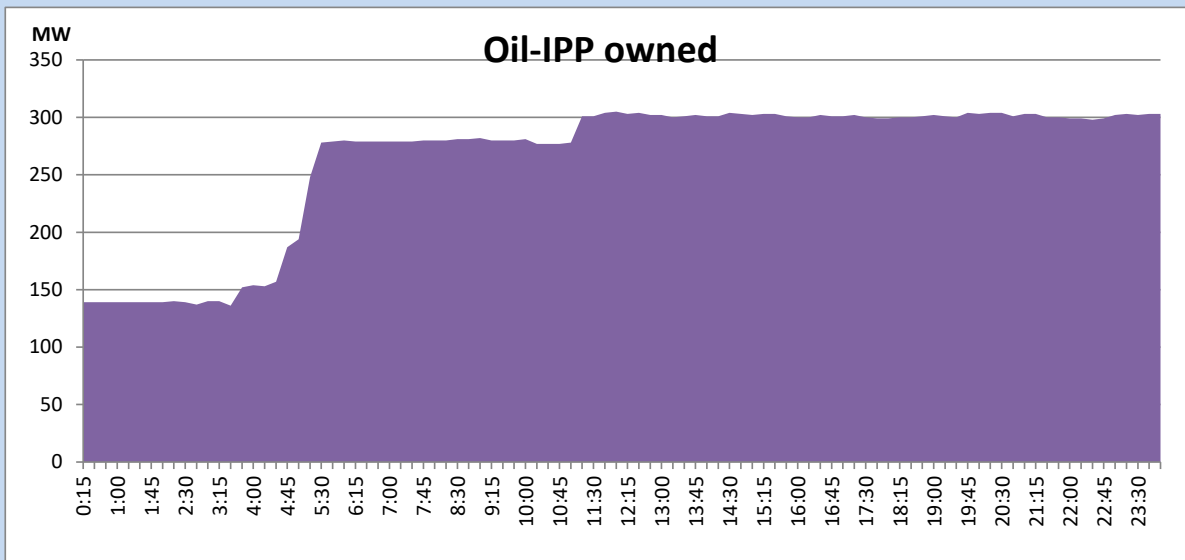
CEB Oil Plant Generation during the Previous day

June 27, 2022



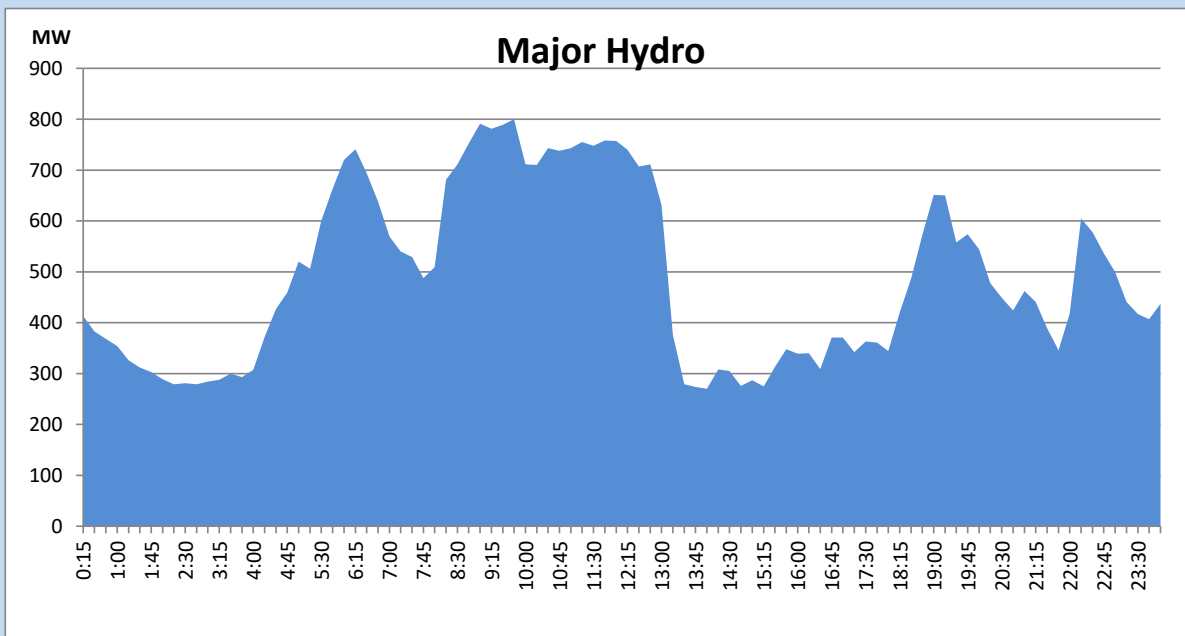
IPP Oil Plant Generation during the Previous day

June 27, 2022



Major Hydro Generation during the Previous day

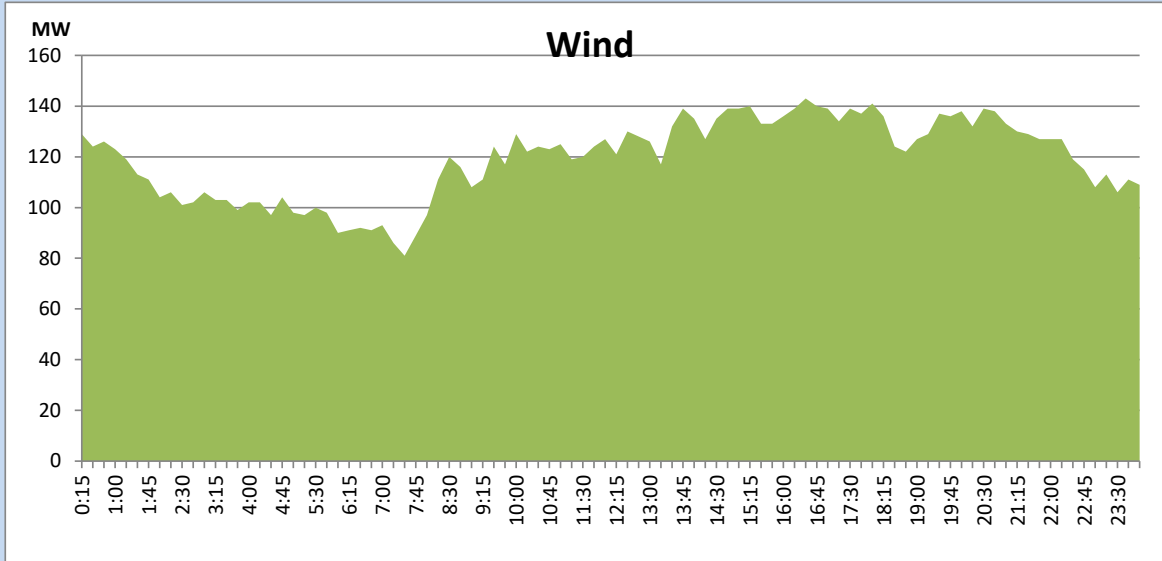
June 27, 2022



Wind Generation during the Previous day

June 27, 2022

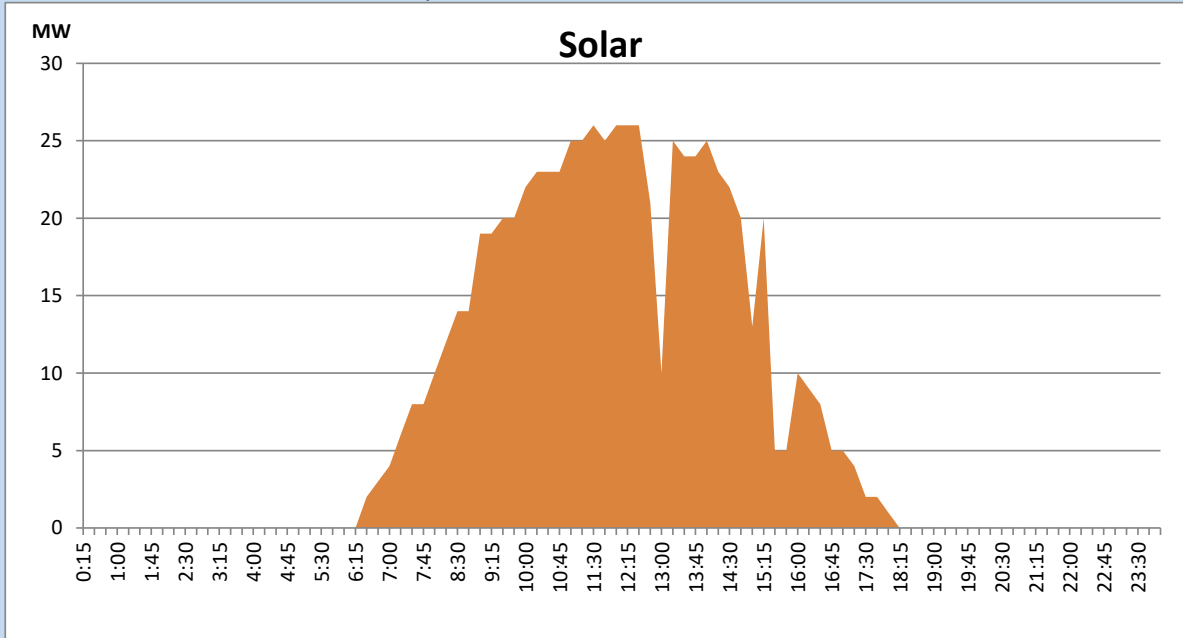
Based on Telemetered Power Stations only



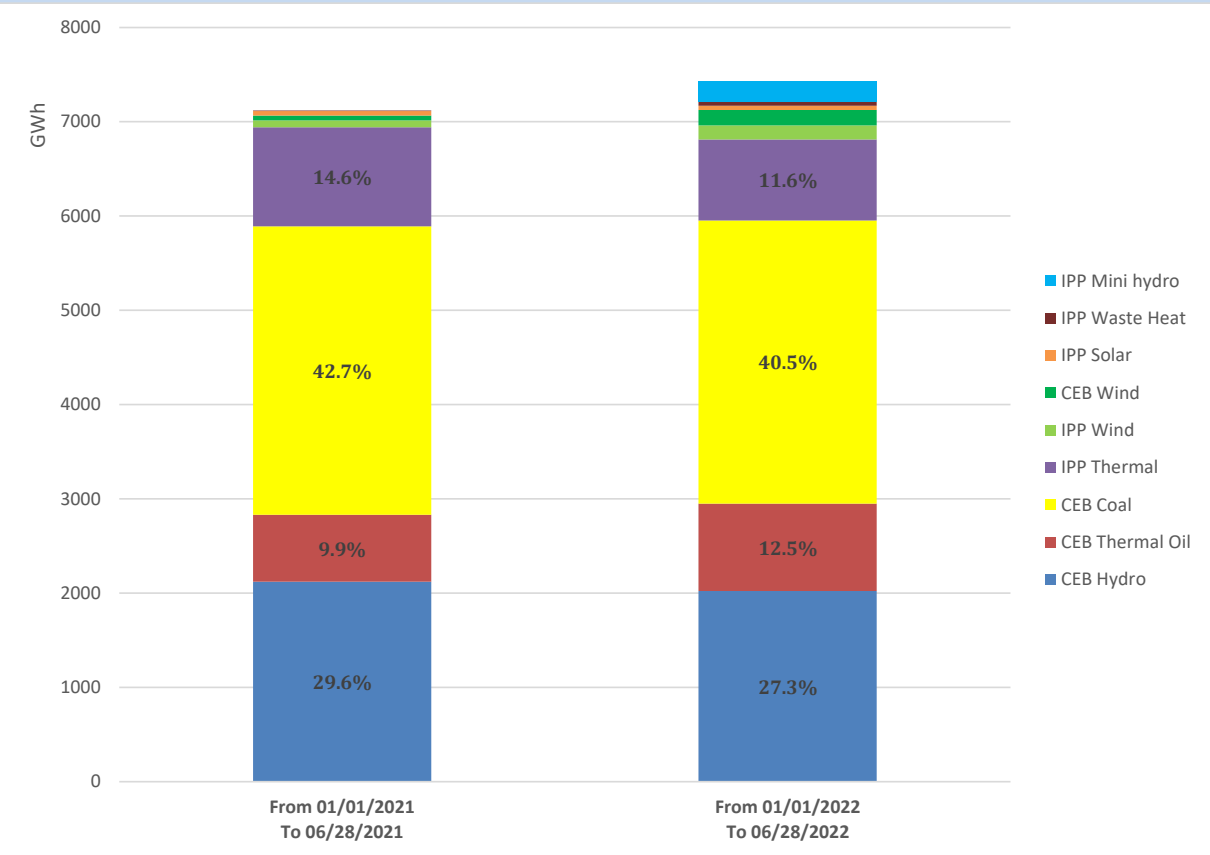
Solar Generation during the Previous day

June 27, 2022

Based on Telemetered Power Stations only



Cumulative Dispatch Comparison with Last Year



Thermal Plant Fuel types

Power Station	Primary Fuel
CEB Thermal	
Sapugaskanda 1	Heavy Fuel
Sapugaskanda 2	Heavy Fuel
Kelanitissa Small Gas Turbines	Auto Diesel
GT 7 - Kelanitissa	Auto Diesel
Kelanitissa CCY	Naphtha or Diesel
Lakvijaya 1	Coal
Lakvijaya 2	Coal
Lakvijaya 3	Coal
Uthuru Janani	Heavy Fuel
Barge CEB	Heavy Fuel

Power Station	Primary Fuel
Private Thermal	
Sojitz - Kelanitissa	Auto Diesel
West Coast	Auto Diesel / Heavy Fuel
ACE Matara	Heavy Fuel
ACE Embilipitiya	Heavy Fuel

Major Incidents during the day -as reported by CEB morning of

June 29, 2022

- 1) Rotational manual load shedding was carried out from 5:00 hrs to 8:00 hrs and 13:00hrs to 22:00hrs.
- 2) ACE Matara made forced shutdown at 09:44 hrs due to lack of fuel.