

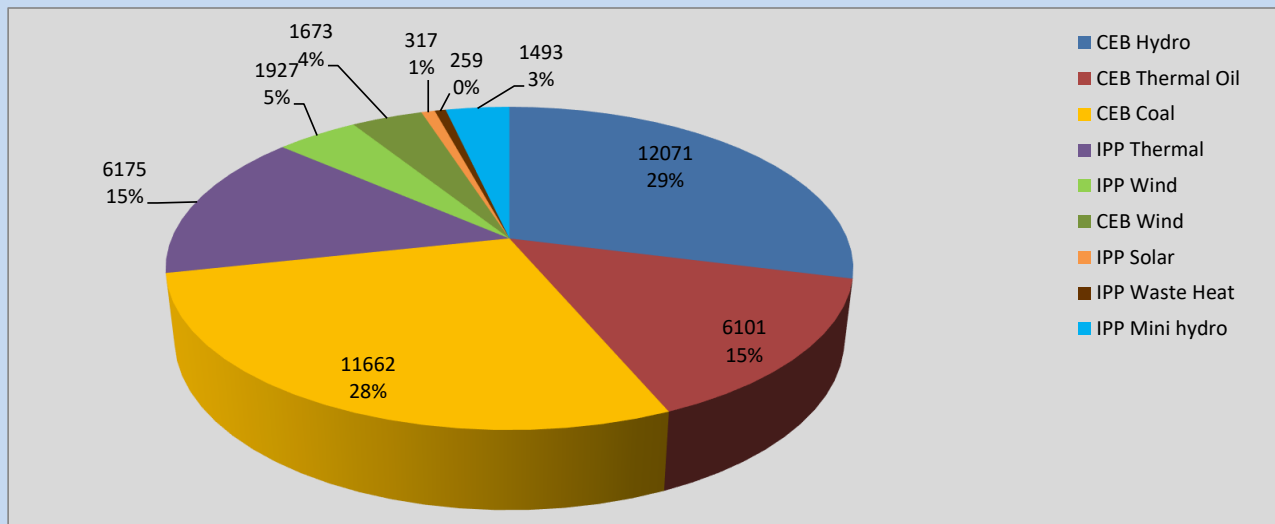
# Generation and Reservoirs Statistics

June 27, 2022



PUBLIC UTILITIES COMMISSION OF SRI LANKA

## Daily Generation Mix in MWh



Total Generation

41,678 MWh

Note: Above data is excluding contribution from Roof Top Solar, 1MW Solar and certain Mini Hydro plants

## Cumulative Dispatch

Note: Following data is Excluding contribution from Roof Top Solar, 1MW solar and Mini Hydro plants

### For Current Month

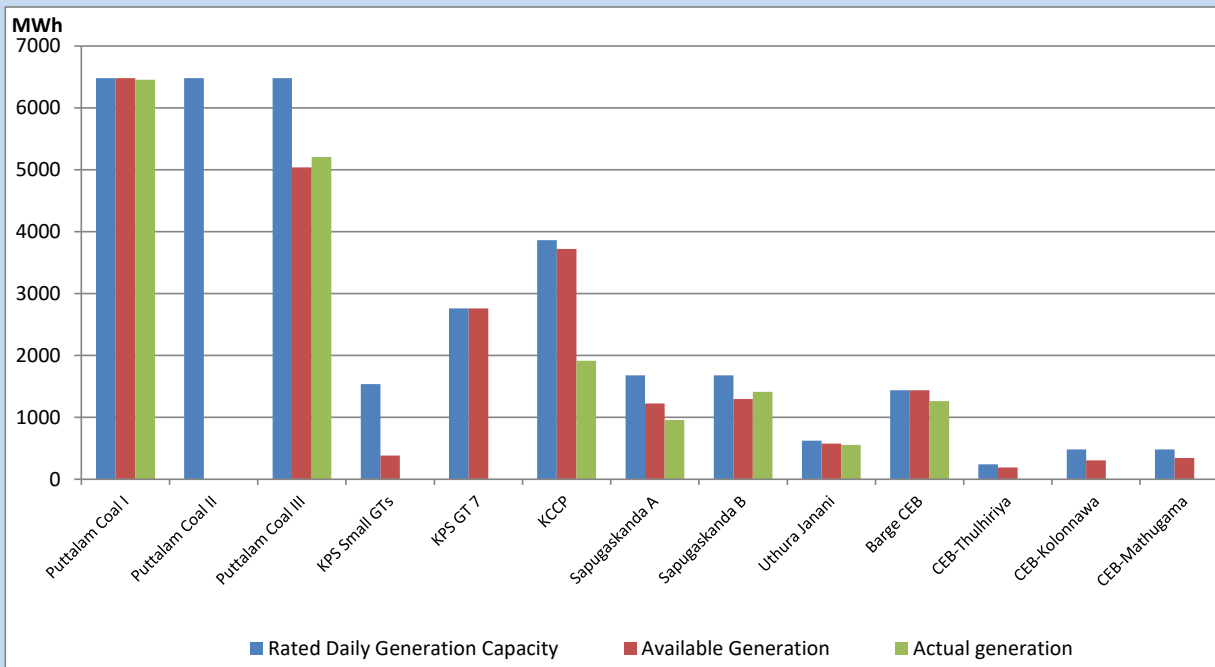
Category	Dispatch (GWh)	Percentage
CEB Hydro	401.54	36.97%
CEB Thermal Oil	59.94	5.52%
CEB Coal	427.00	39.32%
IPP Thermal	43.88	4.04%
SPP Wind	45.76	4.21%
CEB Wind	46.39	4.27%
SPP Solar	6.54	0.60%
SPP Solid Waste	6.41	0.59%
Mini Hydro	48.52	4.47%
<b>Total</b>	<b>1,085.98</b>	

### For Current Year

Category	Dispatch (GWh)	Percentage
CEB Hydro	2,010.6	27.24%
CEB Thermal Oil	918.4	12.45%
CEB Coal	2,993.3	40.56%
IPP Thermal	852.4	11.55%
SPP Wind	146.7	1.99%
CEB Wind	163.1	2.21%
SPP Solar	45.6	0.62%
SPP Solid Waste	37.7	0.51%
Mini Hydro	212.2	2.88%
<b>Total</b>	<b>7,379.7</b>	

## CEB owned Thermal Plant Dispatch

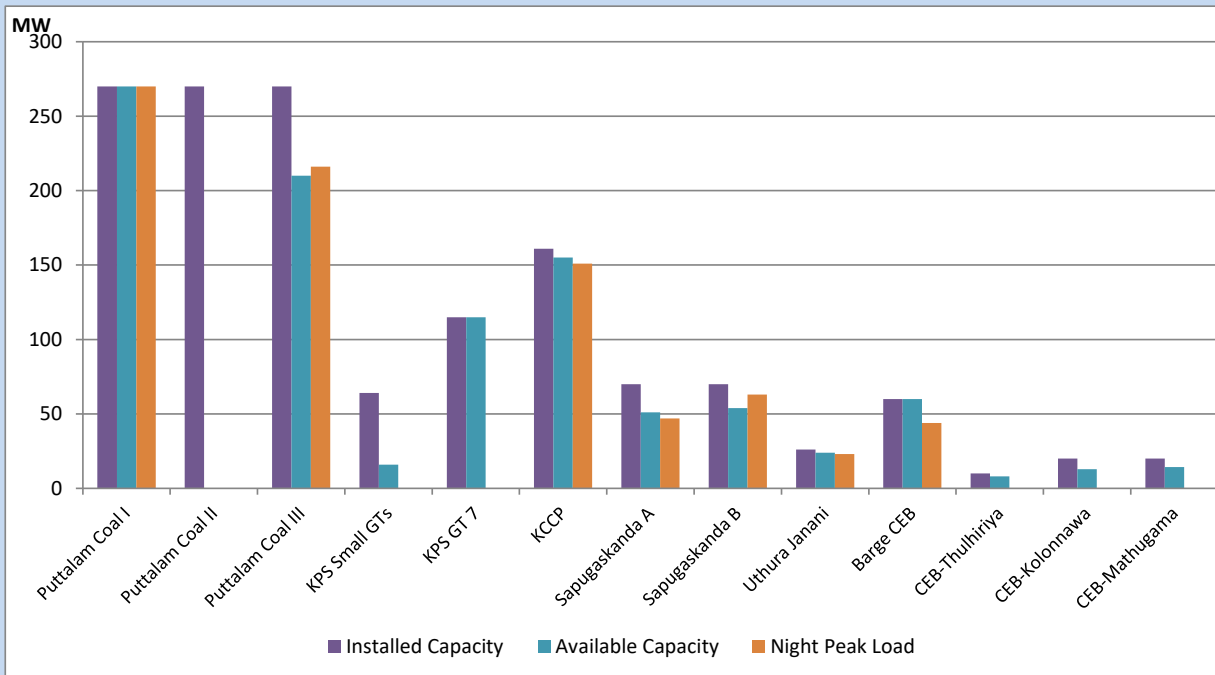
June 27, 2022



Available Generation is estimated based on plant availability at 6.00am on

June 28, 2022

## CEB owned Thermal Plant Loading at the Night Peak



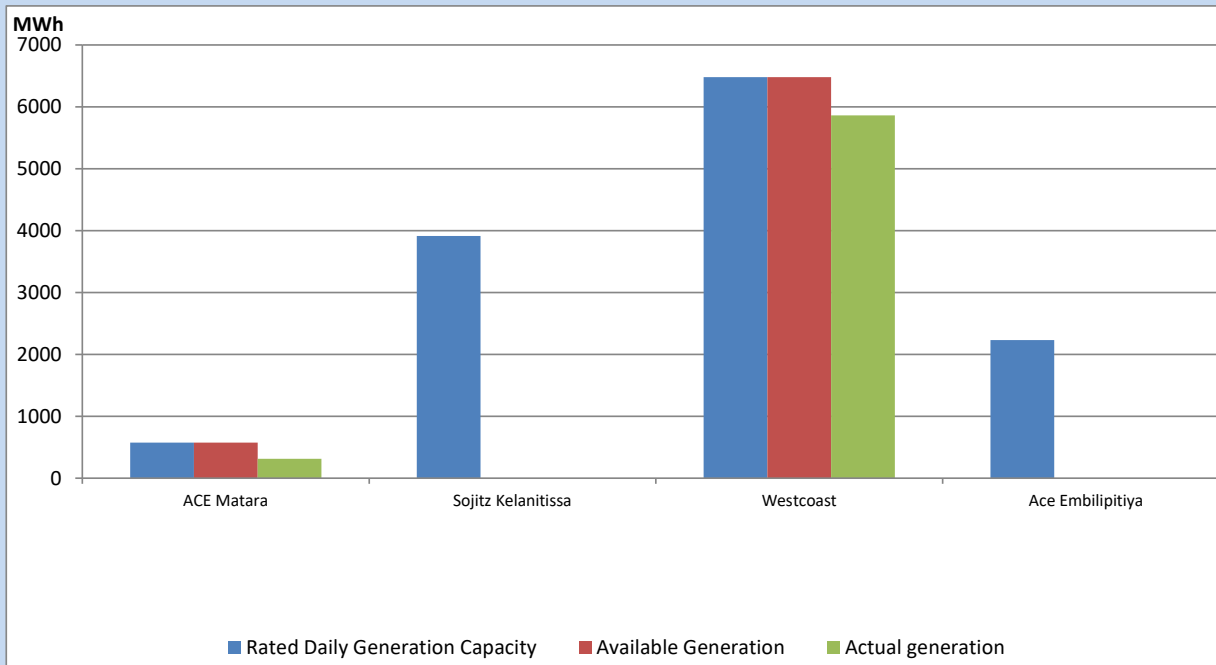
Note- Plant availability is recorded at 6.00 am on

June 28, 2022

## IPP owned Thermal Plant Dispatch

June 27, 2022

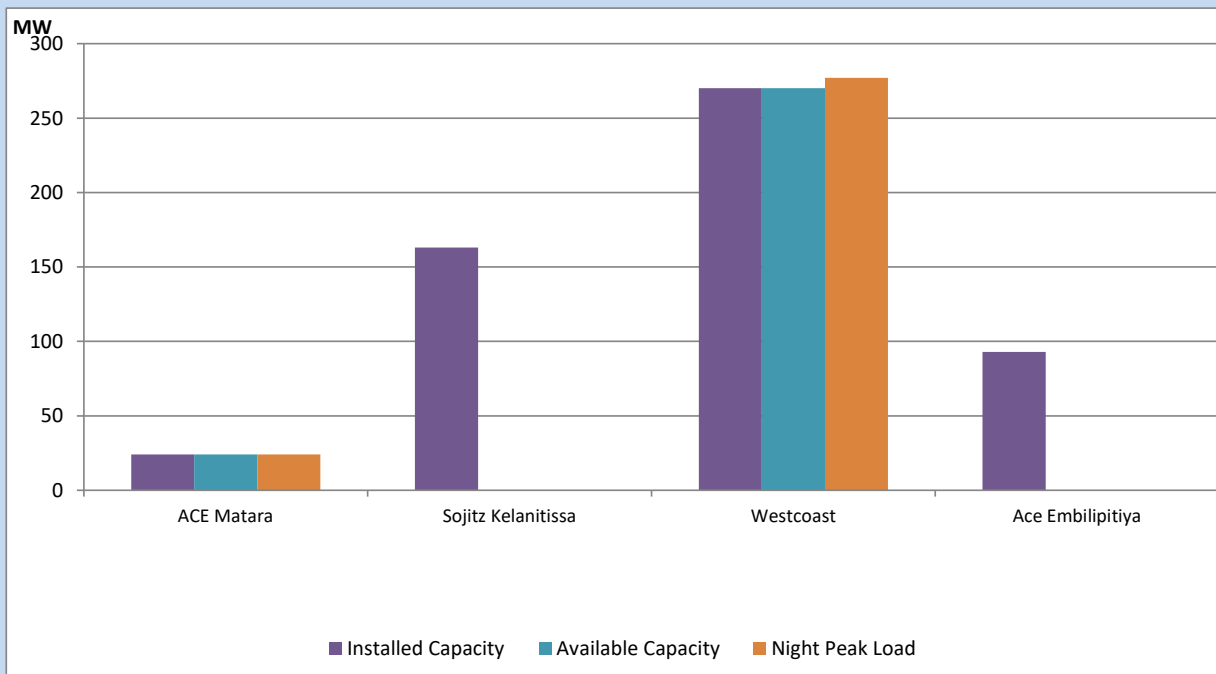
Asia Power, V Power Pallekale, Vpower Galle, V Power Horana, Vpower Hambantota, Vpower Valachchena and Altaqa Mahiyanganaya are not available due to expiration of PPAs



Available Generation is estimated based on plant availability at 6.00am on

June 28, 2022

## IPP owned Thermal Plant Loading at the Night Peak

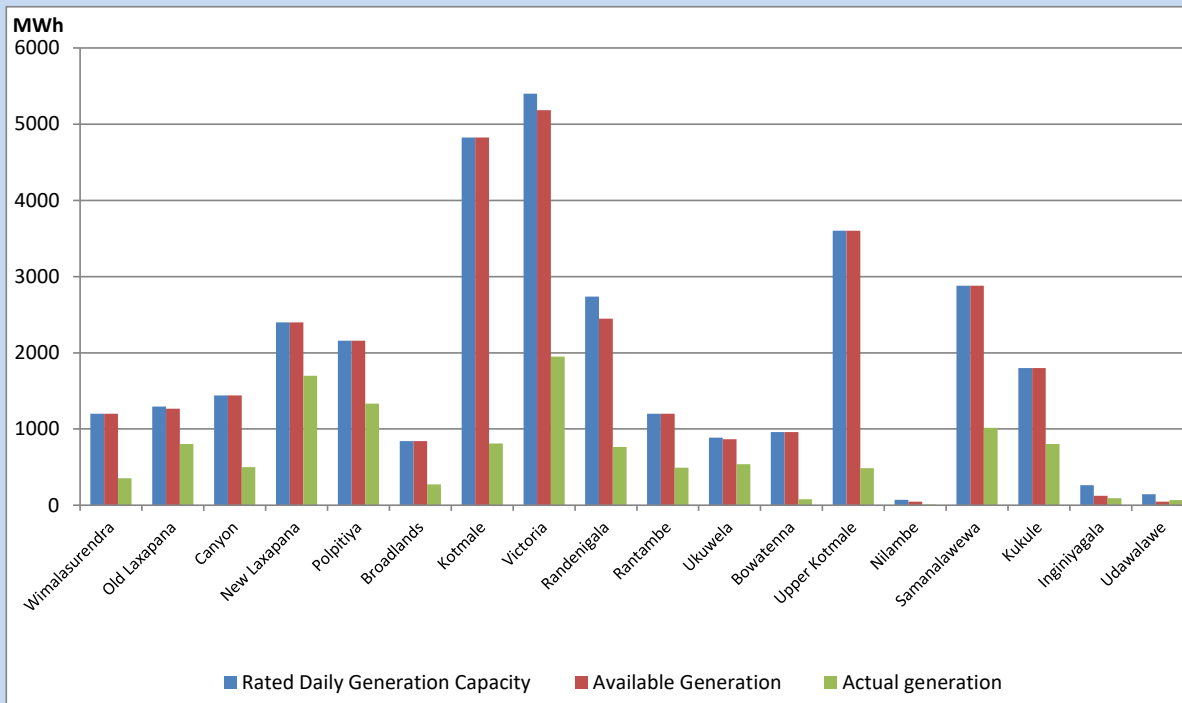


Note- Plant availability is recorded at 6.00 am on

June 28, 2022

## Major Hydro Plant Dispatch

June 27, 2022

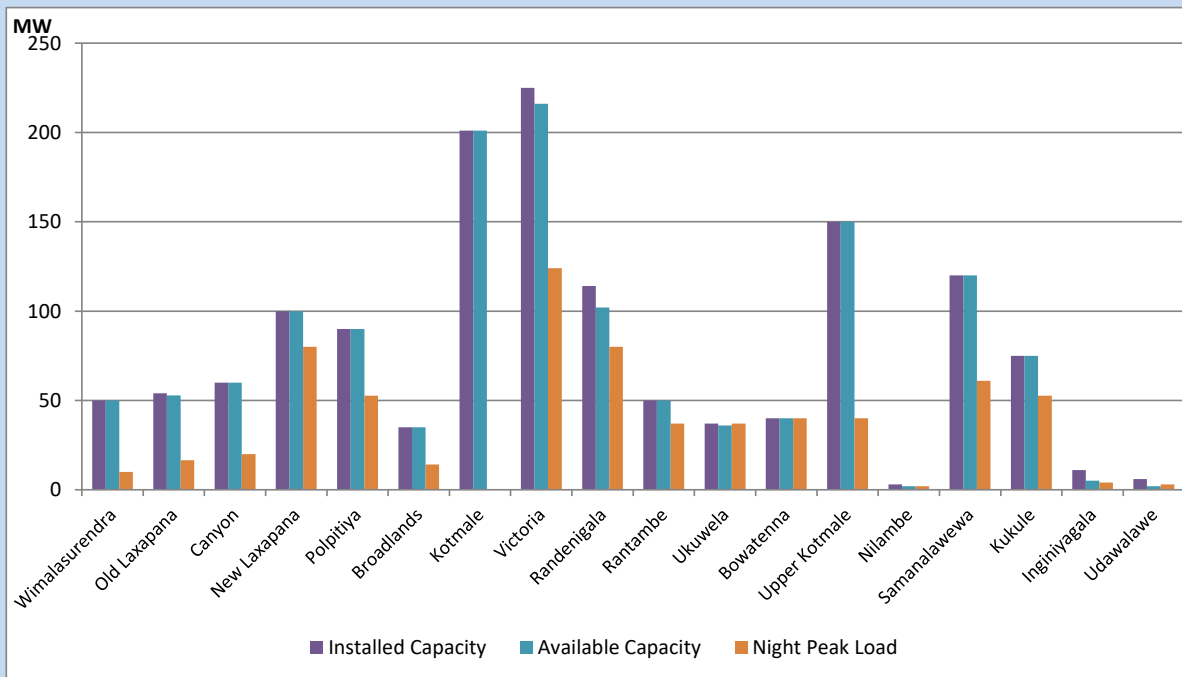


Available Generation is estimated based on plant availability at 6.00am on  
Broadlands power plant is operating in the Commissioning Stage

June 28, 2022

## Major Hydro Plant Loading at Night Peak

June 27, 2022



Note- Plant availability is recorded at 6.00 am on  
Broadlands power plant is operating in the Commissioning Stage

June 28, 2022

## Summary of Major Plant performance

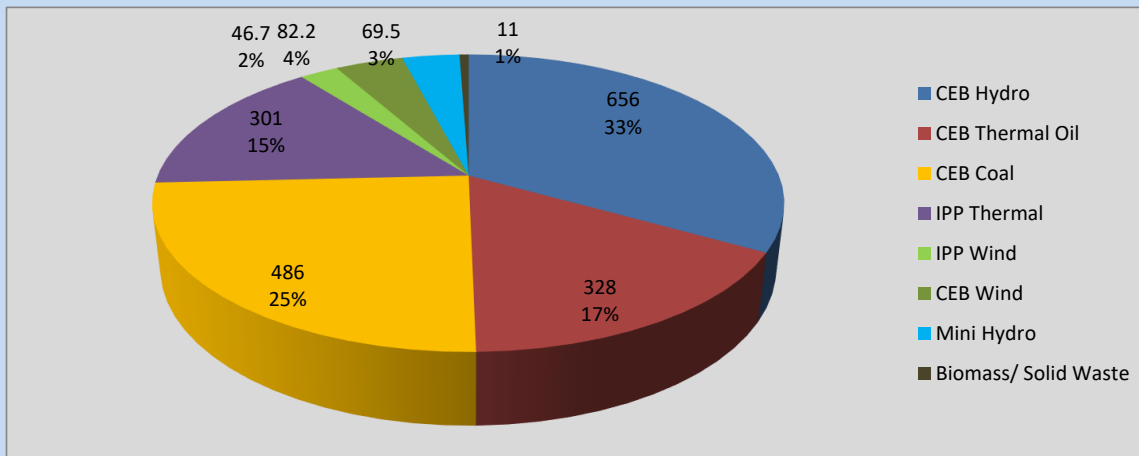
Plant	Installed Capacity	Plant Availability	Night peak Load	Plant Dispatch
	(MW)	(MW)	(MW)	(MWh)
Wimalasurendra	50	50	10	354
Old Laxapana	54	53	17	803
Canyon	60	60	20	501
New Laxapana	100	100	80	1,700
Polpitiya	90	90	53	1,331
Broadlands	35	35	14	273
Kotmale	201	201	0	810
Victoria	225	216	124	1,951
Randenigala	114	102	80	765
Rantambe	50	50	37	494
Ukuwela	37	36	37	538
Bowatenna	40	40	40	78
Upper Kotmale	150	150	40	487
Nilambe	3	2	2	9
Samanalawewa	120	120	61	1,017
Kukule	75	75	53	802
Inginiyagala	11	5	4	91
Udawalawe	6	2	3	67
Puttalam Coal I	270	270	270	6,455
Puttalam Coal II	270	0	0	0
Puttalam Coal III	270	210	216	5,207
KPS Small GTs	64	16	0	0
KPS GT 7	115	115	0	0
KCCP	161	155	151	1,914
Sapugaskanda A	70	51	47	958
Sapugaskanda B	70	54	63	1,412
Uthura Janani	26	24	23	554
Barge CEB	60	60	44	1,263
CEB-Thulhiriya	10	8	0	0
CEB-Kolonnawa	20	13	0	0
CEB-Mathugama	20	14	0	0
ACE Matara	24	24	24	313
Sojitz Kelanitissa	163	0	0	0
West Coast	270	270	277	5,862
ACE Embilipitiya	93	0	0	0
<b>Total</b>	<b>3,397</b>	<b>2,671</b>	<b>1,999</b>	<b>41,678</b>

Plant availability is the availability recorded at 6 am on

June 28, 2022

## Contribution to the Night Peak in MW

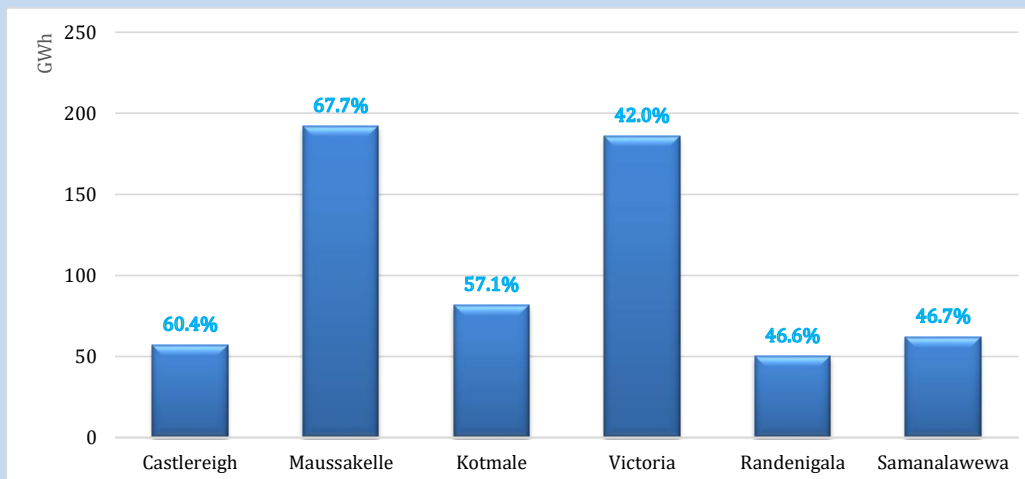
June 27, 2022



Night Peak*	1,980.5 MW
Day Peak	2,023.5 MW
Minimum Demand	1,285.7 MW

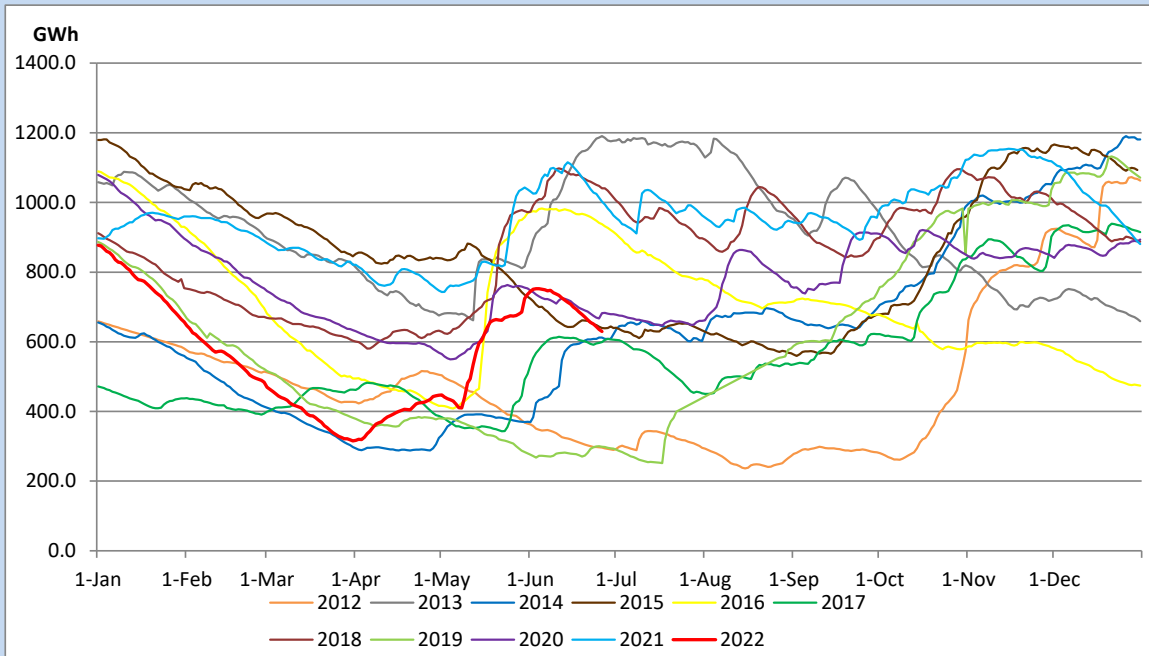
Above figures are excluding contribution from Roof Top Solar, 1MW solar, certain Wind plants and Mini Hydro plants

## Reservoir Levels - as at 06.00 Hr on June 28, 2022

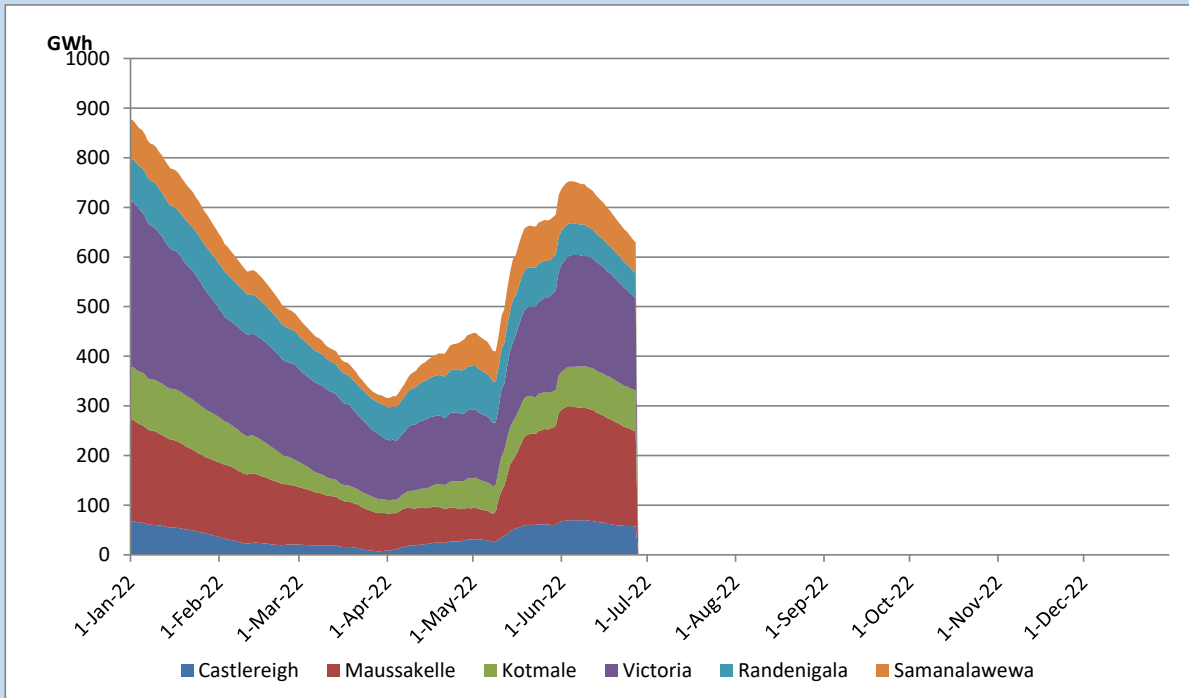


Total Reservoir Level	629.4 GWh
% of Total capacity	52.2%

## Comparison of Total Reservoir Storage Levels with Past Years

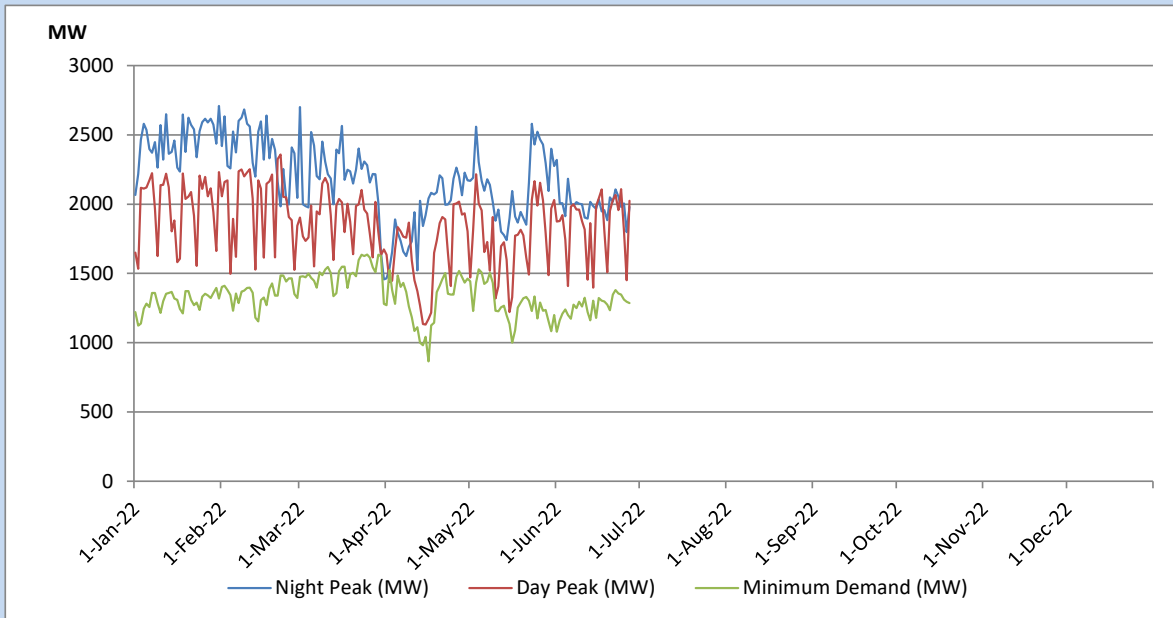


## Variation of Major Hydro Reservoir Levels in the current year (GWh)





## Variation of Demand during the current year

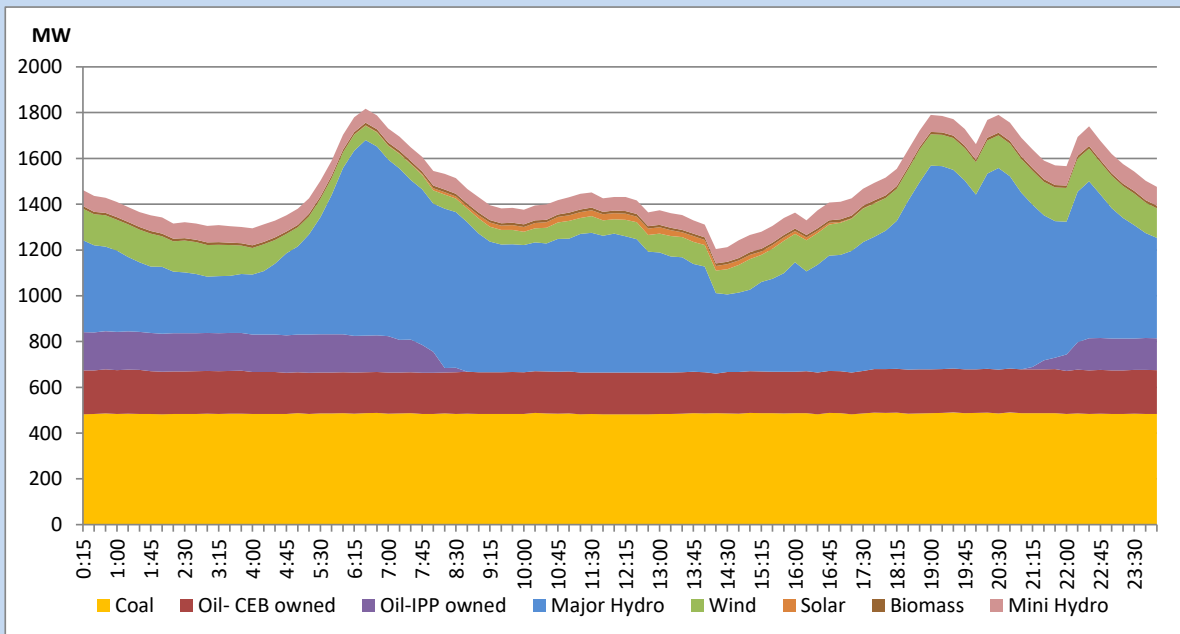


The above figures are excluding contribution from Roof Top Solar, 1MW solar, certain Wind plants and Mini Hydro plants

## Daily Load Curve of the Previous day

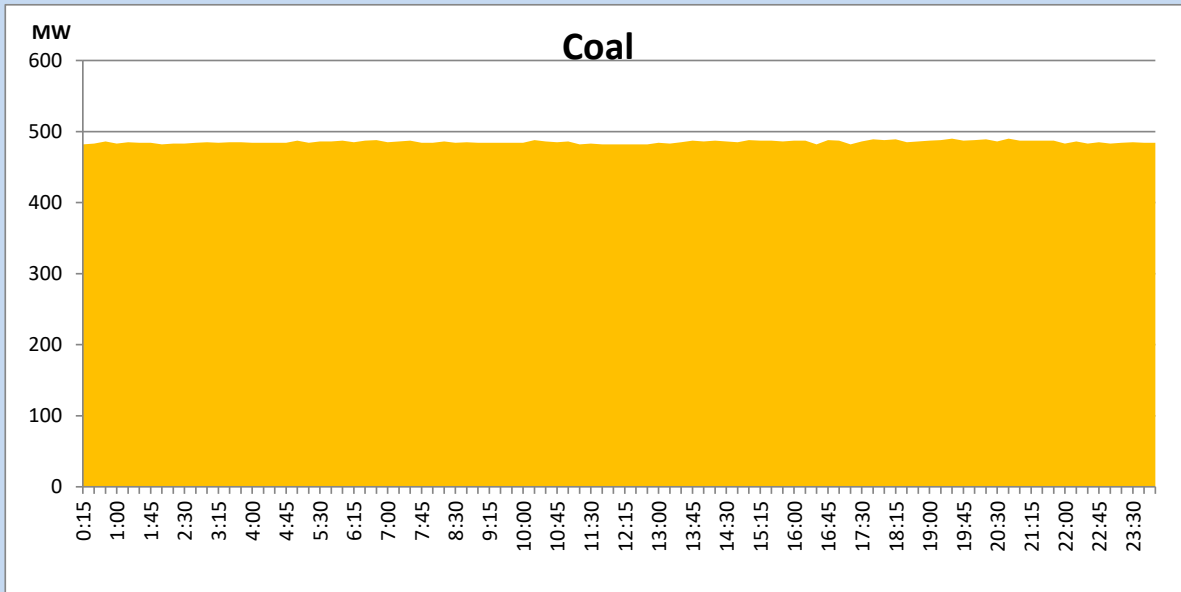
June 26, 2022

Solar and wind data is based on Telemetered Power Stations only



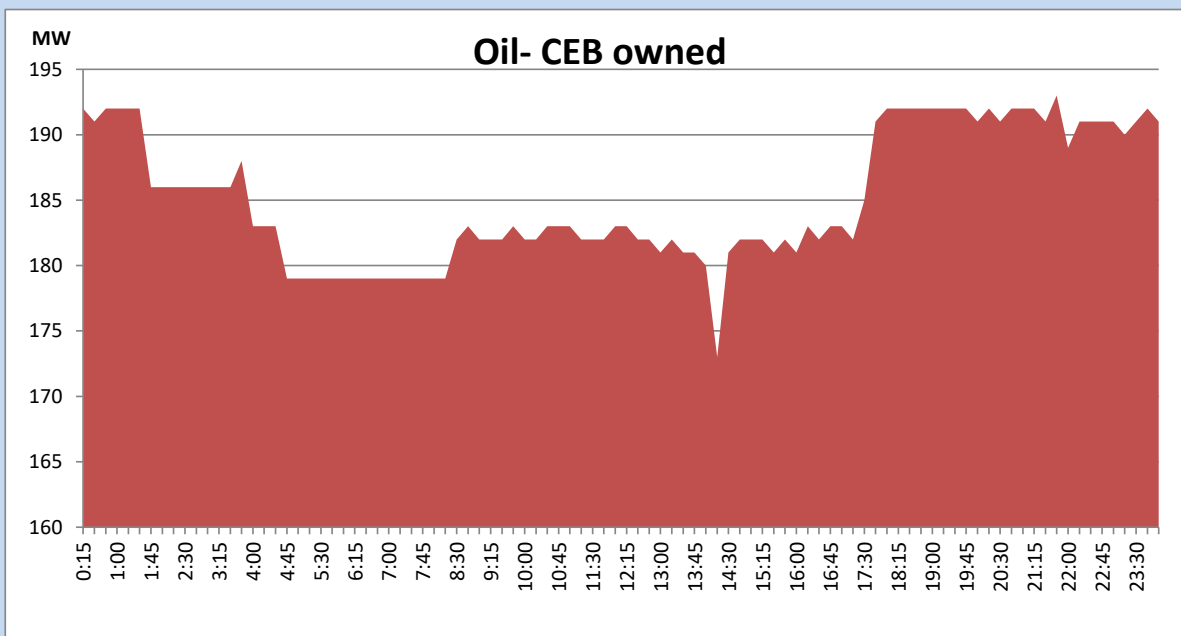
## Coal Generation during the Previous day

June 26, 2022



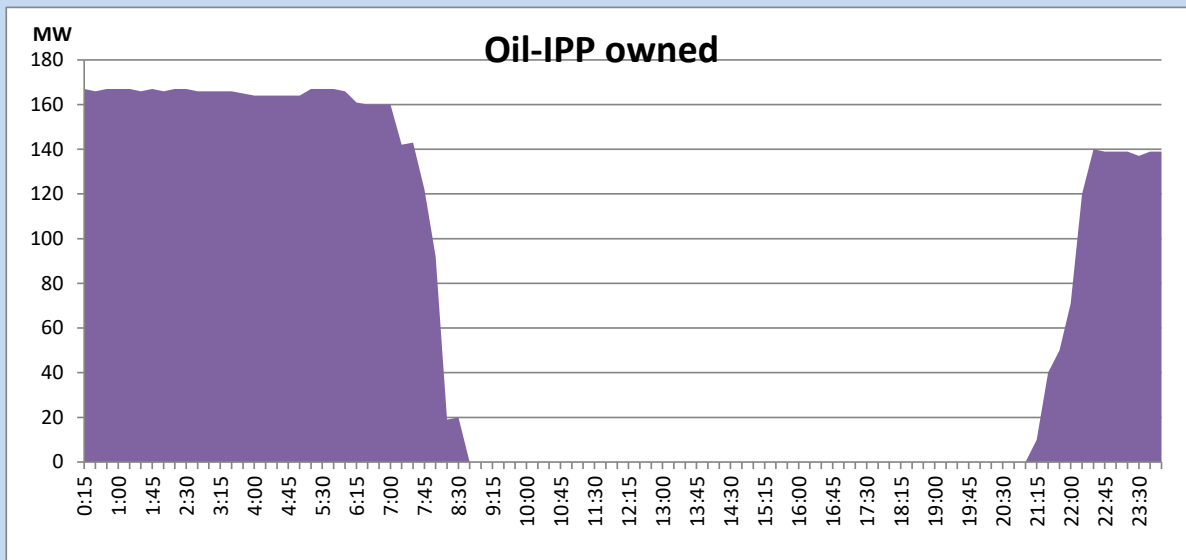
## CEB Oil Plant Generation during the Previous day

June 26, 2022



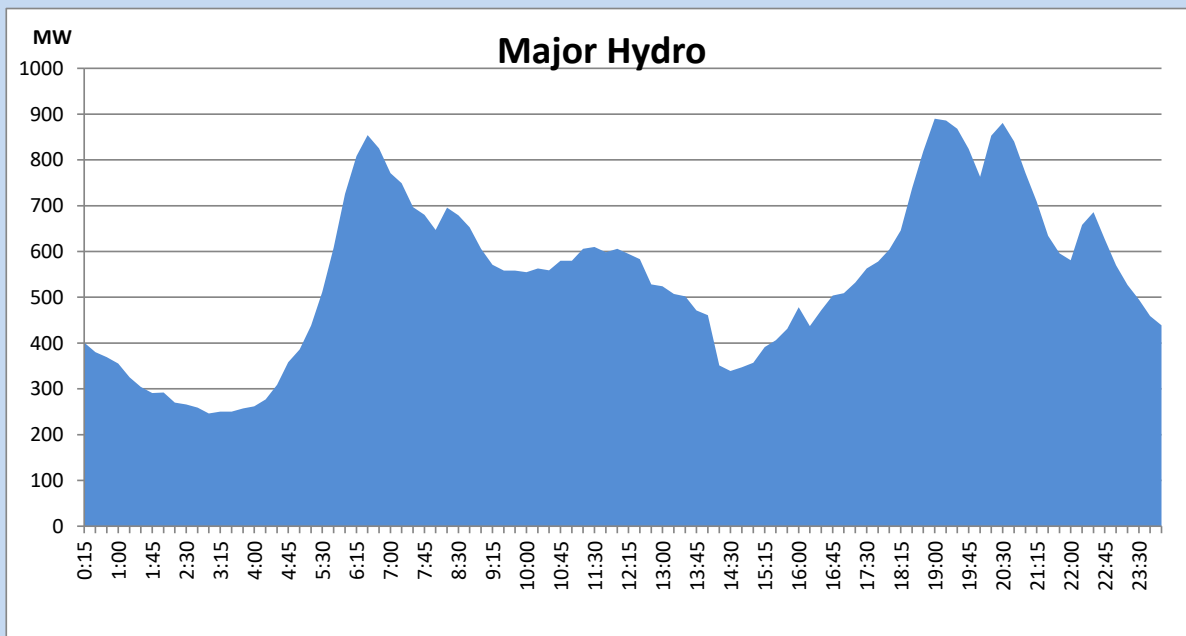
## IPP Oil Plant Generation during the Previous day

June 26, 2022



## Major Hydro Generation during the Previous day

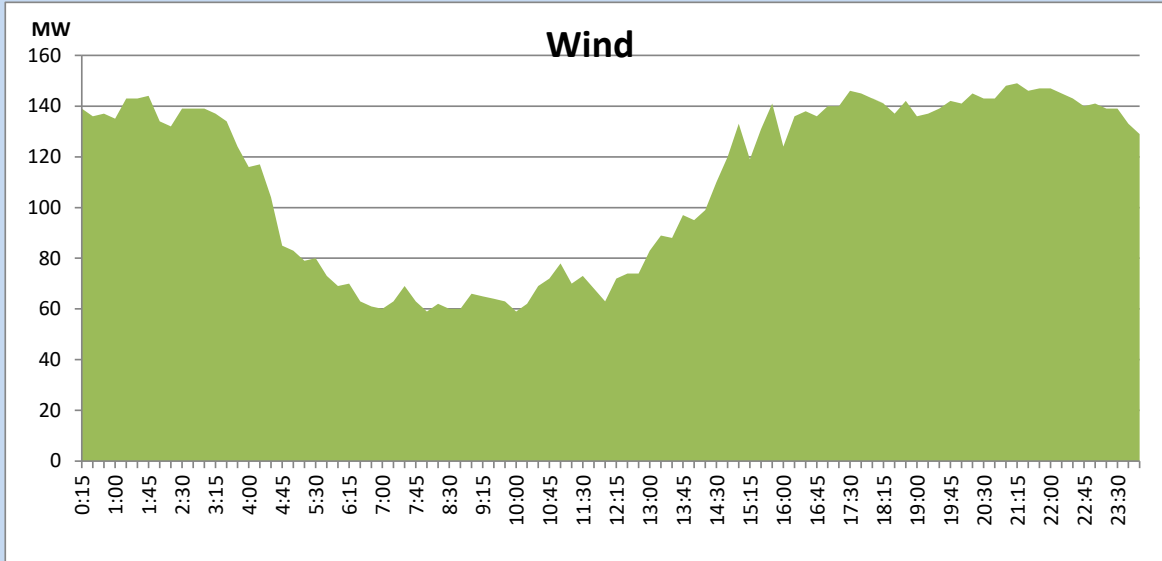
June 26, 2022



## Wind Generation during the Previous day

June 26, 2022

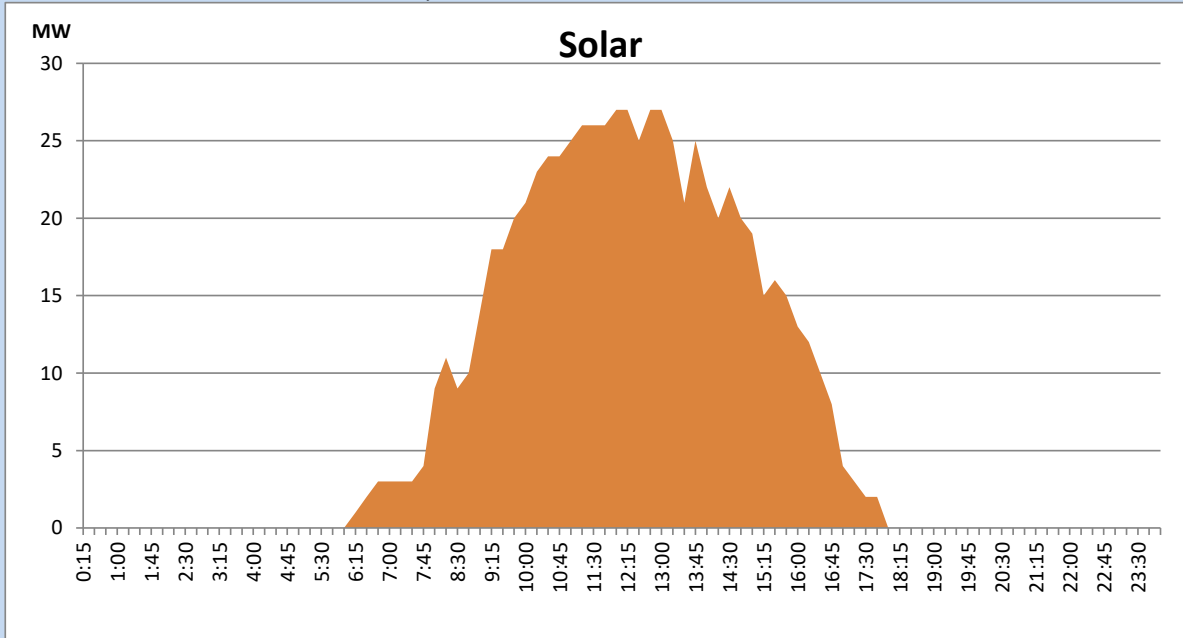
Based on Telemetered Power Stations only



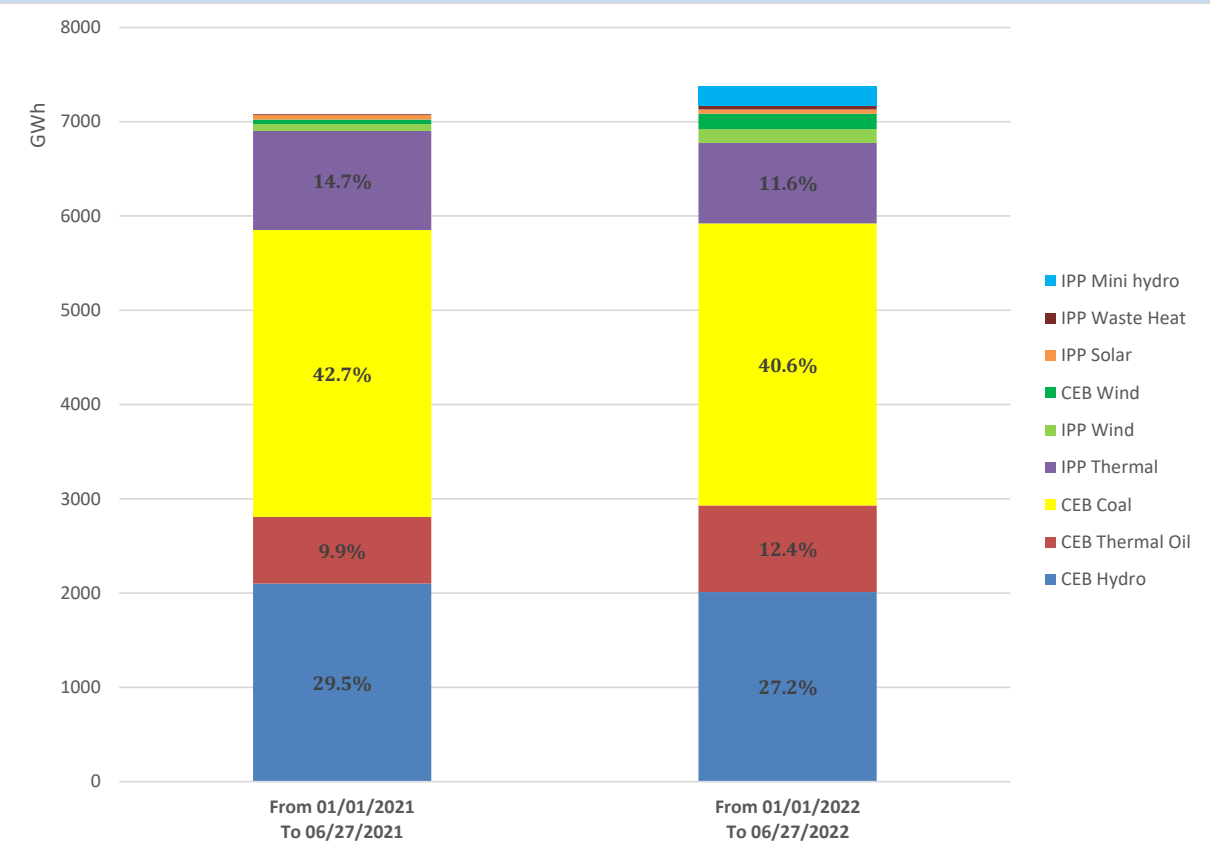
## Solar Generation during the Previous day

June 26, 2022

Based on Telemetered Power Stations only



# Cumulative Dispatch Comparison with Last Year



## Thermal Plant Fuel types

Power Station	Primary Fuel
CEB Thermal	
Sapugaskanda 1	Heavy Fuel
Sapugaskanda 2	Heavy Fuel
Kelanitissa Small Gas Turbines	Auto Diesel
GT 7 - Kelanitissa	Auto Diesel
Kelanitissa CCY	Naphtha or Diesel
Lakvijaya 1	Coal
Lakvijaya 2	Coal
Lakvijaya 3	Coal
Uthuru Janani	Heavy Fuel
Barge CEB	Heavy Fuel

Power Station	Primary Fuel
Private Thermal	
Sojitz - Kelanitissa	Auto Diesel
West Coast	Auto Diesel / Heavy Fuel
ACE Matara	Heavy Fuel
ACE Embilipitiya	Heavy Fuel

Major Incidents during the day -as reported by CEB morning of

June 28, 2022

1) Rotational manual load shedding was carried out from 5:00 hrs to 8:00 hrs and 13:00hrs to 22:00hrs.