

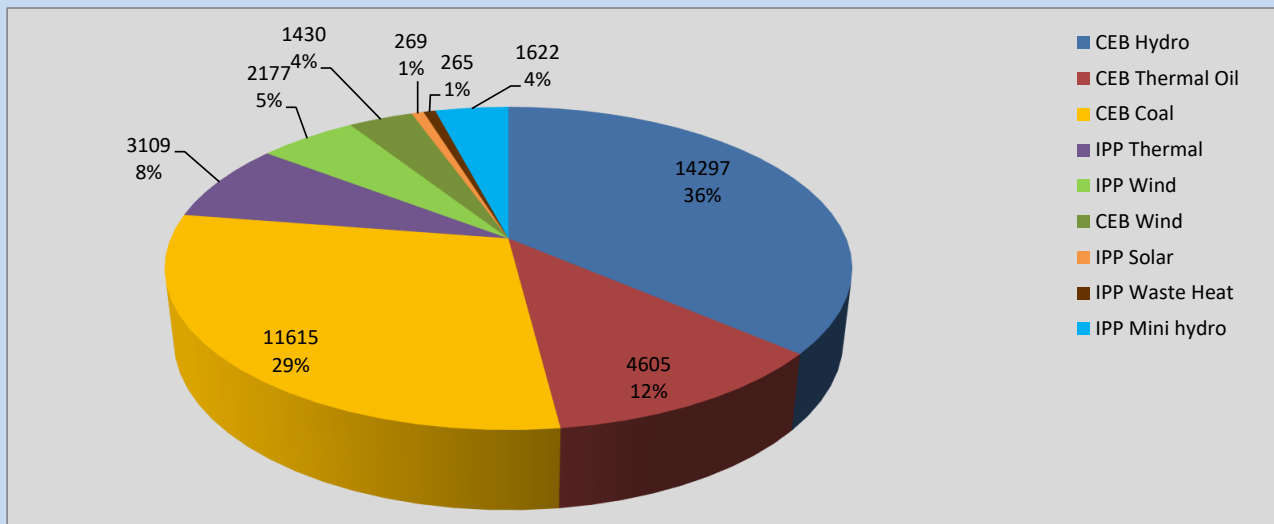
# Generation and Reservoirs Statistics

June 25, 2022



PUBLIC UTILITIES COMMISSION OF SRI LANKA

## Daily Generation Mix in MWh



**Total Generation** **39,389 MWh**

Note: Above data is excluding contribution from Roof Top Solar, 1MW Solar and certain Mini Hydro plants

## Cumulative Dispatch

Note: Following data is Excluding contribution from Roof Top Solar, 1MW solar and Mini Hydro plants

### For Current Month

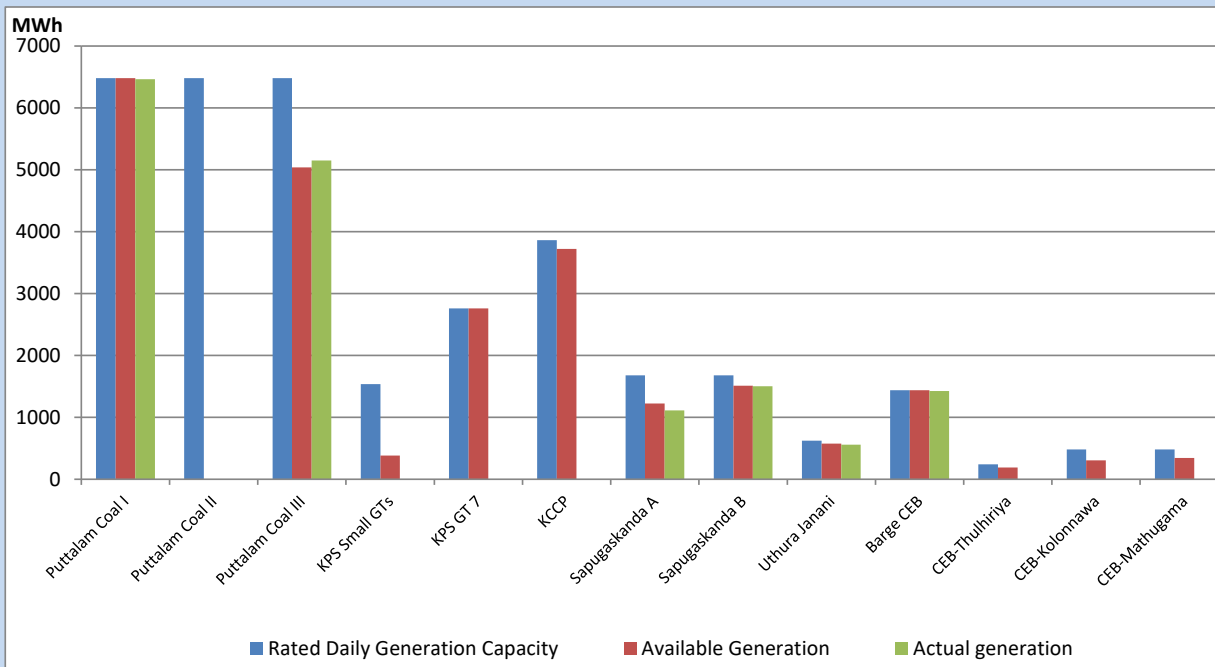
Category	Dispatch (GWh)	Percentage
CEB Hydro	376.24	37.33%
CEB Thermal Oil	49.36	4.90%
CEB Coal	403.68	40.05%
IPP Thermal	36.11	3.58%
SPP Wind	41.94	4.16%
CEB Wind	43.19	4.29%
SPP Solar	5.92	0.59%
SPP Solid Waste	5.89	0.58%
Mini Hydro	45.52	4.52%
<b>Total</b>	<b>1,007.85</b>	

### For Current Year

Category	Dispatch (GWh)	Percentage
CEB Hydro	1,985.3	27.19%
CEB Thermal Oil	907.8	12.43%
CEB Coal	2,970.0	40.68%
IPP Thermal	844.6	11.57%
SPP Wind	142.9	1.96%
CEB Wind	159.9	2.19%
SPP Solar	45.0	0.62%
SPP Solid Waste	37.2	0.51%
Mini Hydro	209.2	2.87%
<b>Total</b>	<b>7,301.6</b>	

## CEB owned Thermal Plant Dispatch

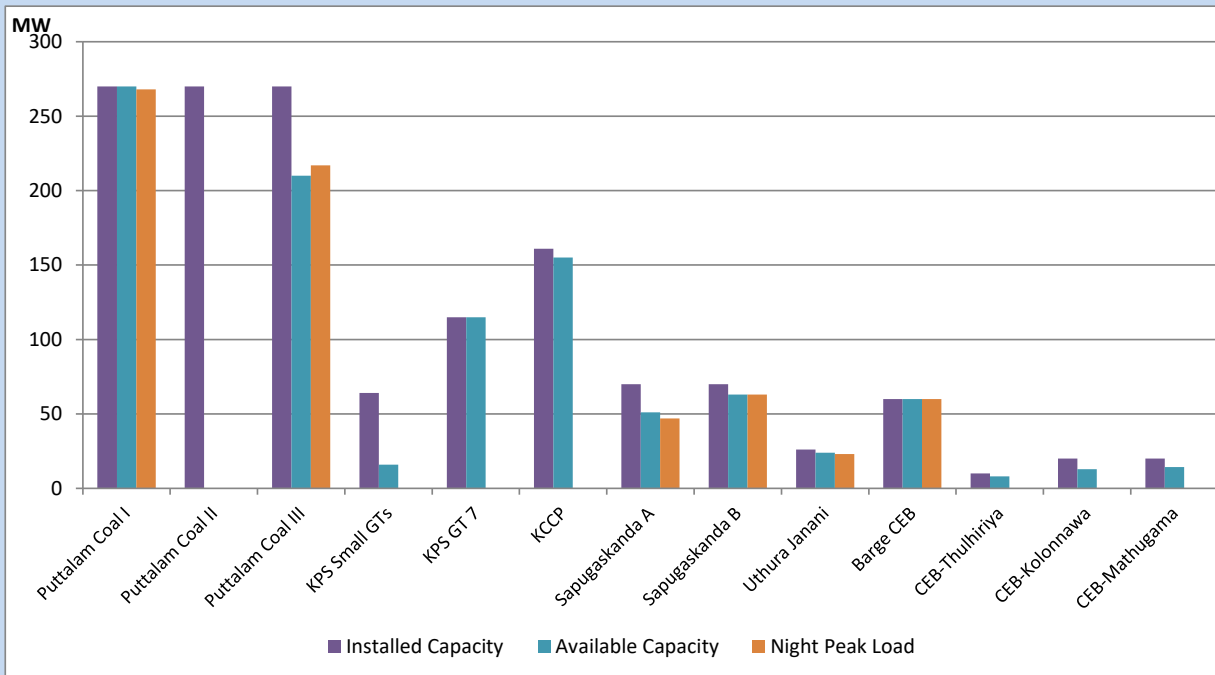
June 25, 2022



Available Generation is estimated based on plant availability at 6.00am on

June 26, 2022

## CEB owned Thermal Plant Loading at the Night Peak



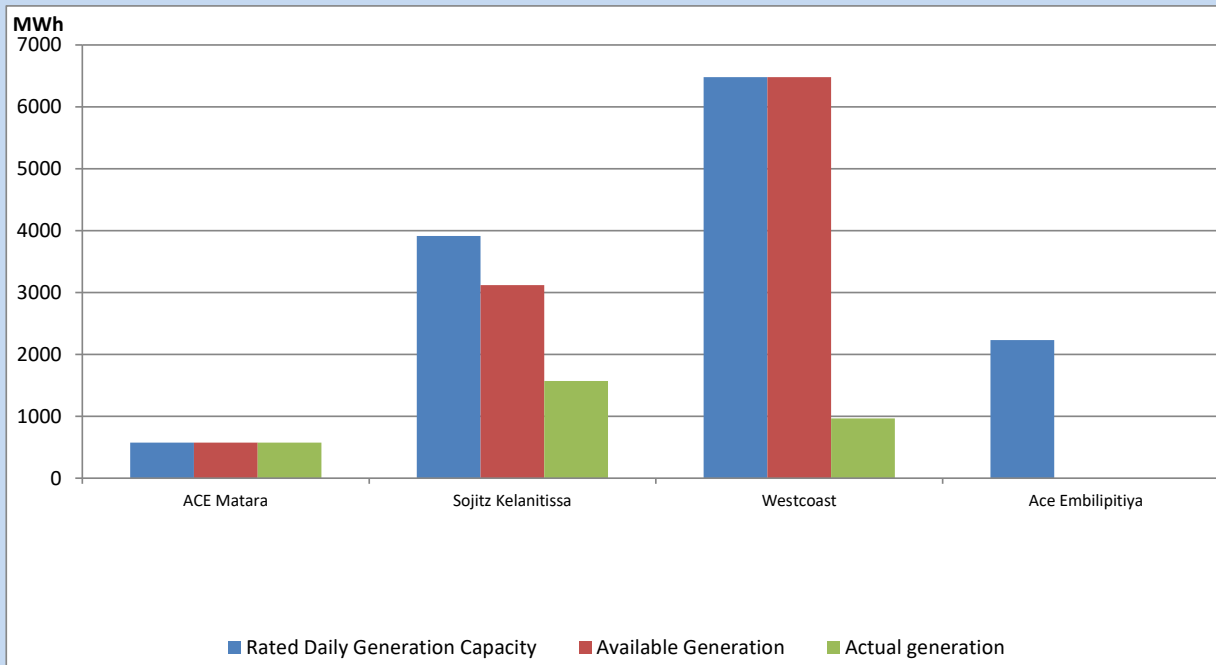
Note- Plant availability is recorded at 6.00 am on

June 26, 2022

## IPP owned Thermal Plant Dispatch

June 25, 2022

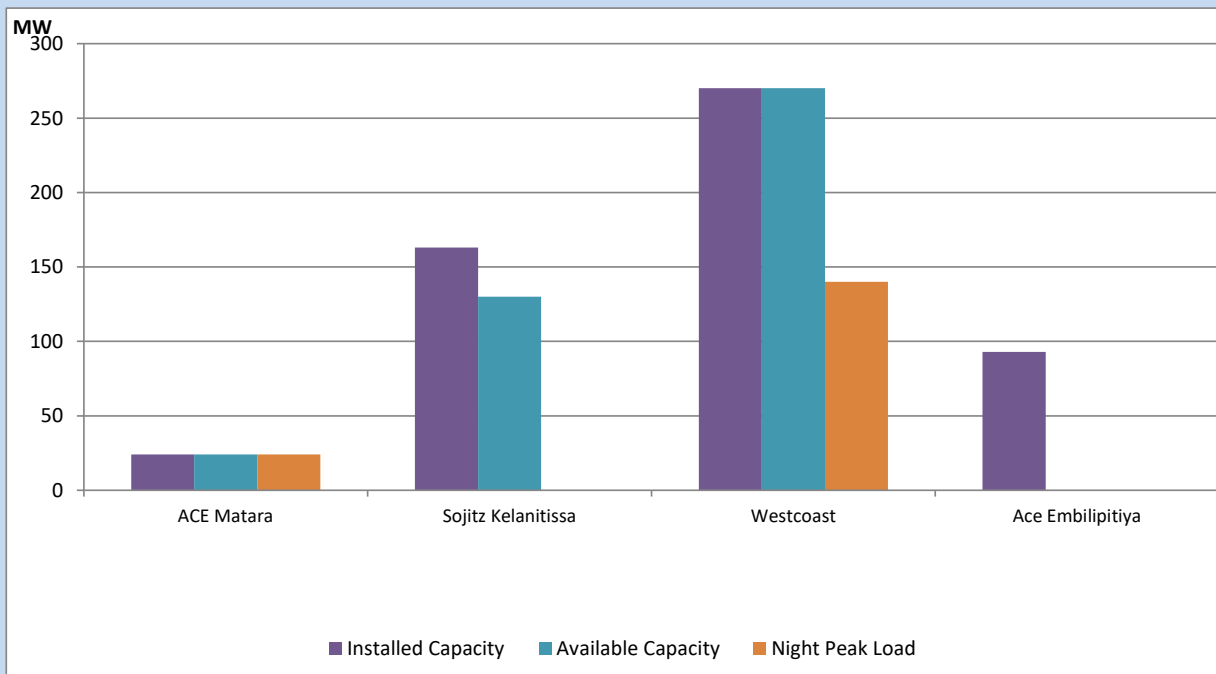
Asia Power, V Power Pallekale, Vpower Galle, V Power Horana, Vpower Hambantota, Vpower Valachchena and Altaqa Mahiyanganaya are not available due to expiration of PPAs



Available Generation is estimated based on plant availability at 6.00am on

June 26, 2022

## IPP owned Thermal Plant Loading at the Night Peak

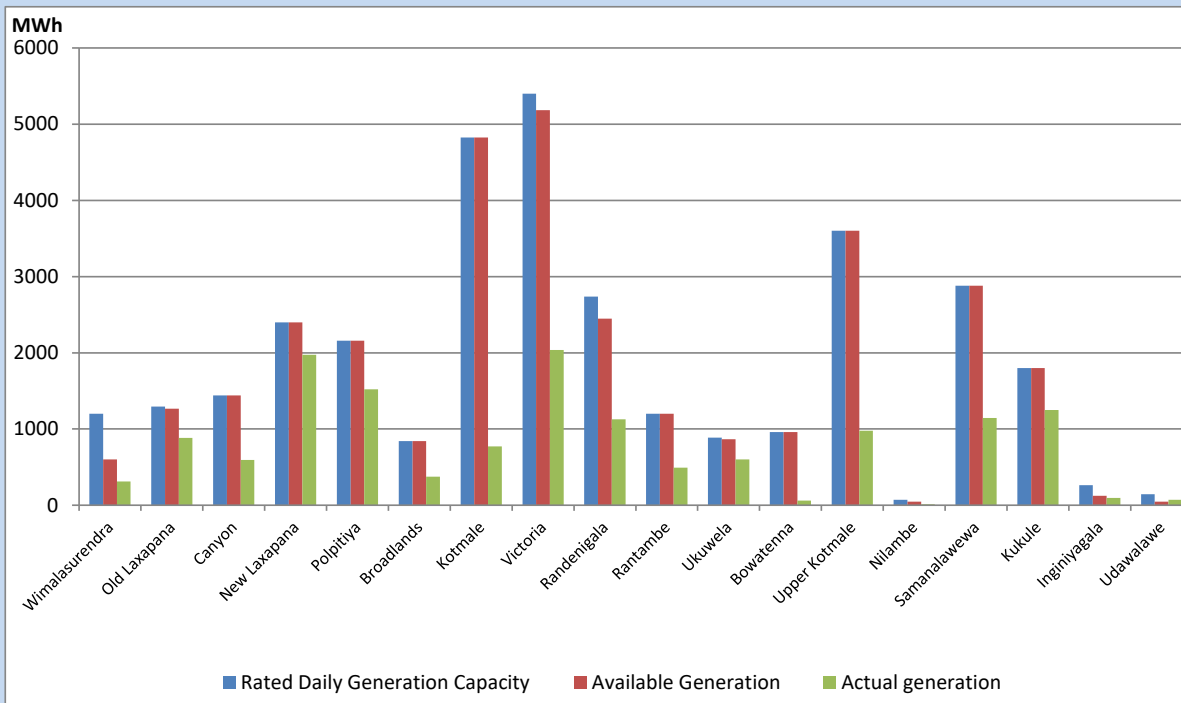


Note- Plant availability is recorded at 6.00 am on

June 26, 2022

## Major Hydro Plant Dispatch

June 25, 2022

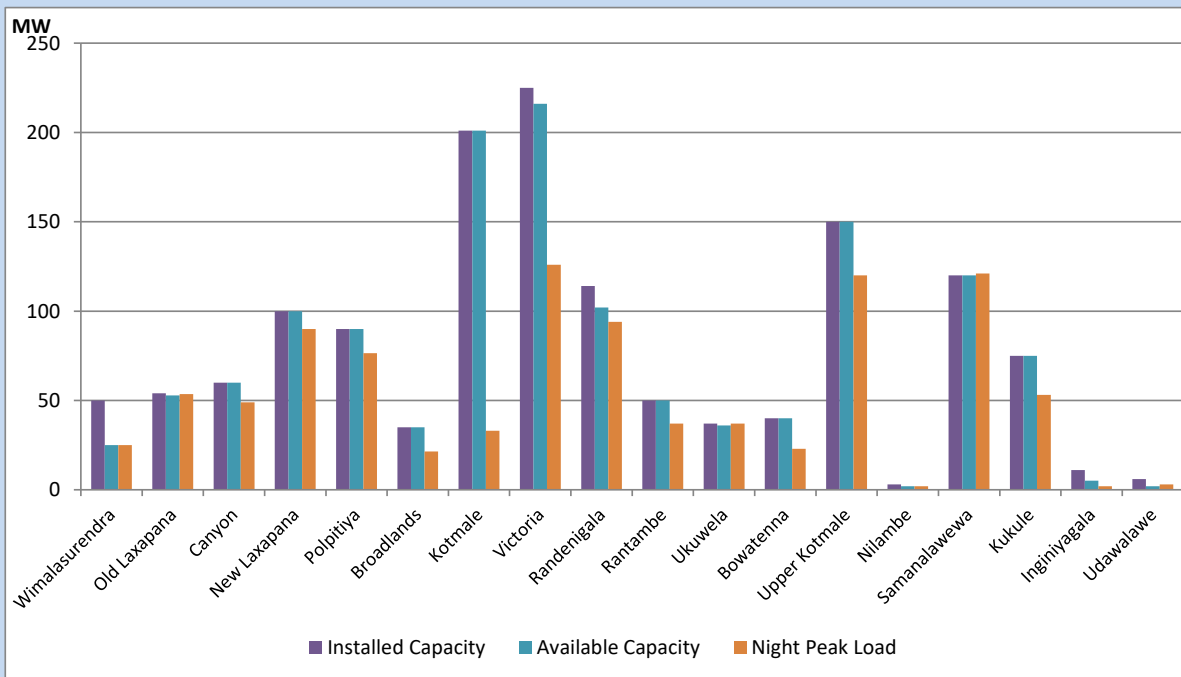


Available Generation is estimated based on plant availability at 6.00am on  
Broadlands power plant is operating in the Commissioning Stage

June 26, 2022

## Major Hydro Plant Loading at Night Peak

June 25, 2022



Note- Plant availability is recorded at 6.00 am on  
Broadlands power plant is operating in the Commissioning Stage

June 26, 2022

## Summary of Major Plant performance

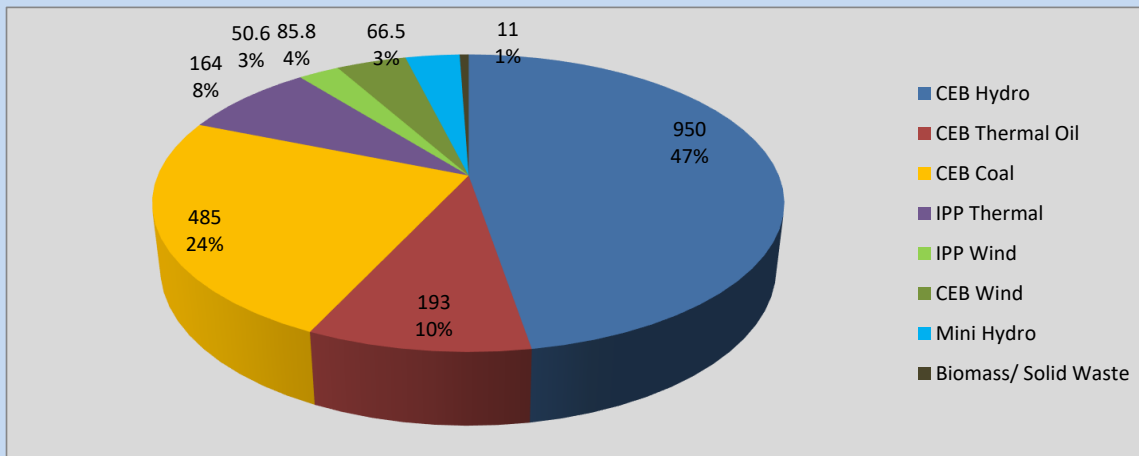
Plant	Installed Capacity	Plant Availability	Night peak Load	Plant Dispatch
	(MW)	(MW)	(MW)	(MWh)
Wimalasurendra	50	25	25	310
Old Laxapana	54	53	54	884
Canyon	60	60	49	595
New Laxapana	100	100	90	1,974
Polpitiya	90	90	77	1,522
Broadlands	35	35	22	373
Kotmale	201	201	33	770
Victoria	225	216	126	2,037
Randenigala	114	102	94	1,126
Rantambe	50	50	37	493
Ukuwela	37	36	37	602
Bowatenna	40	40	23	60
Upper Kotmale	150	150	120	977
Nilambe	3	2	2	13
Samanalawewa	120	120	121	1,146
Kukule	75	75	53	1,249
Inginiyagala	11	5	2	95
Udawalawe	6	2	3	71
Puttalam Coal I	270	270	268	6,464
Puttalam Coal II	270	0	0	0
Puttalam Coal III	270	210	217	5,151
KPS Small GTs	64	16	0	0
KPS GT 7	115	115	0	0
KCCP	161	155	0	0
Sapugaskanda A	70	51	47	1,114
Sapugaskanda B	70	63	63	1,504
Uthura Janani	26	24	23	559
Barge CEB	60	60	60	1,428
CEB-Thulhiriya	10	8	0	0
CEB-Kolonnawa	20	13	0	0
CEB-Mathugama	20	14	0	0
ACE Matara	24	24	24	573
Sojitz Kelanitissa	163	130	0	1,570
West Coast	270	270	140	966
ACE Embilipitiya	93	0	0	0
<b>Total</b>	<b>3,397</b>	<b>2,785</b>	<b>2,023</b>	<b>39,389</b>

Plant availability is the availability recorded at 6 am on

June 26, 2022

## Contribution to the Night Peak in MW

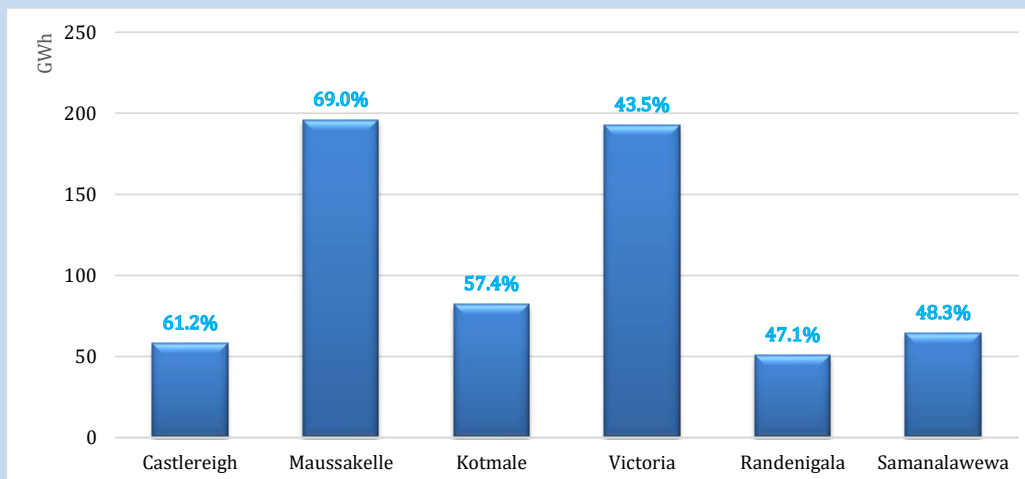
June 25, 2022



Night Peak*	2,005.5 MW
Day Peak	1,805.9 MW
Minimum Demand	1,310.6 MW

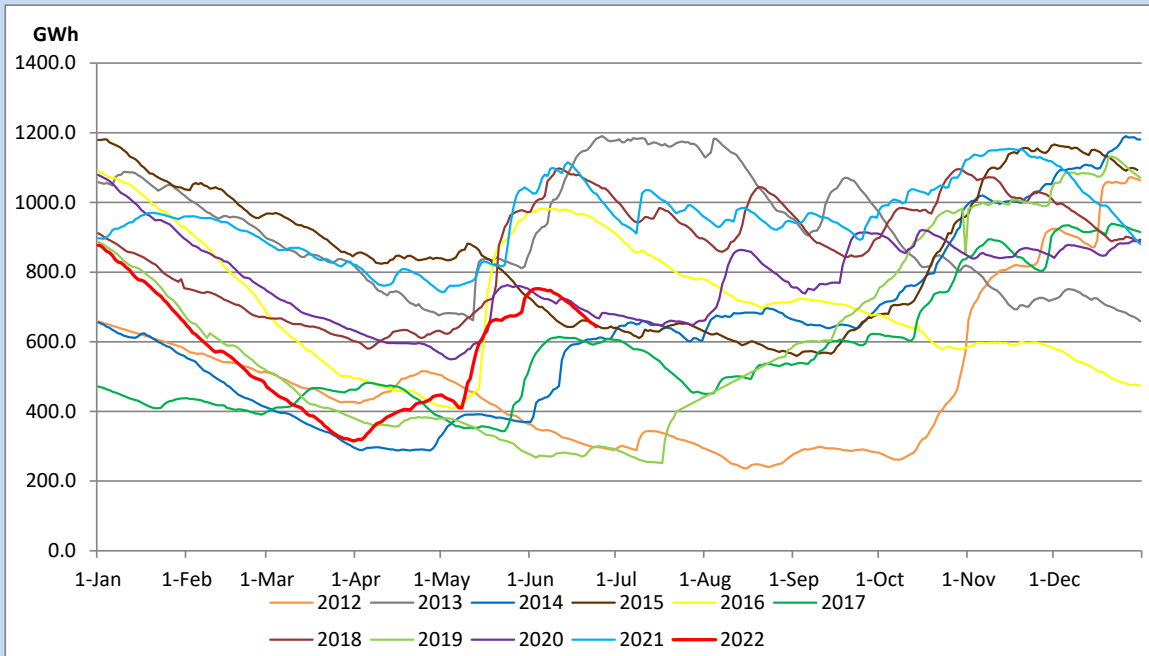
Above figures are excluding contribution from Roof Top Solar, 1MW solar, certain Wind plants and Mini Hydro plants

## Reservoir Levels - as at 06.00 Hr on June 26, 2022

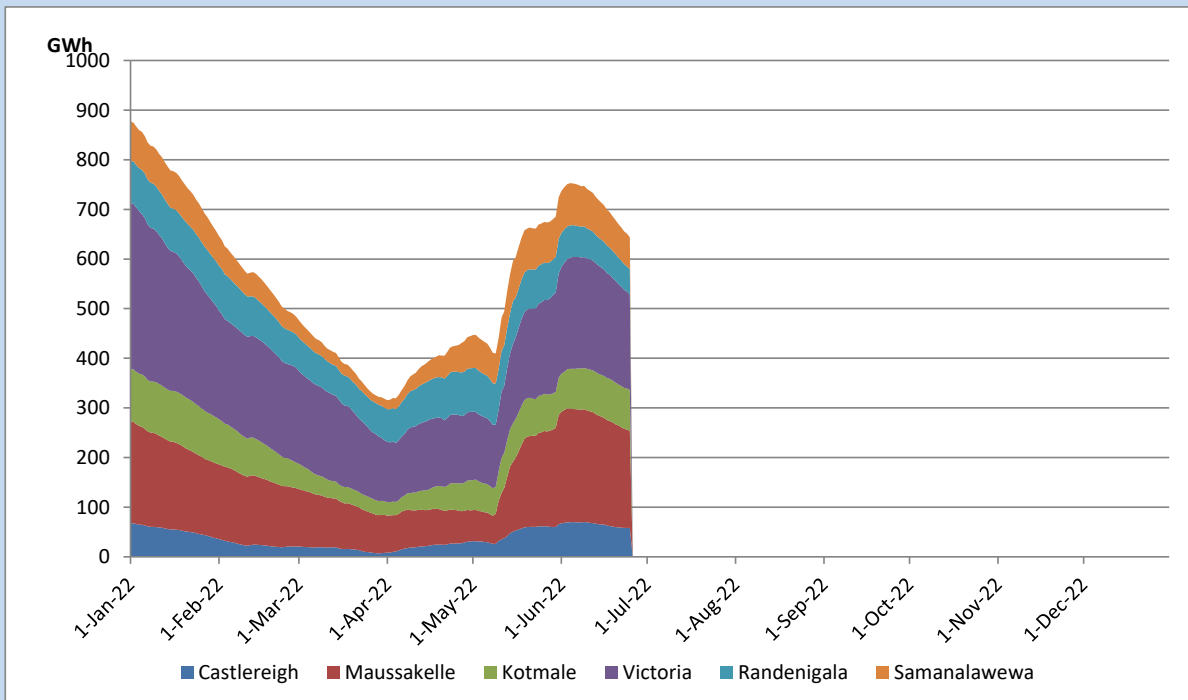


Total Reservoir Level	643.7 GWh
% of Total capacity	53.4%

## Comparison of Total Reservoir Storage Levels with Past Years

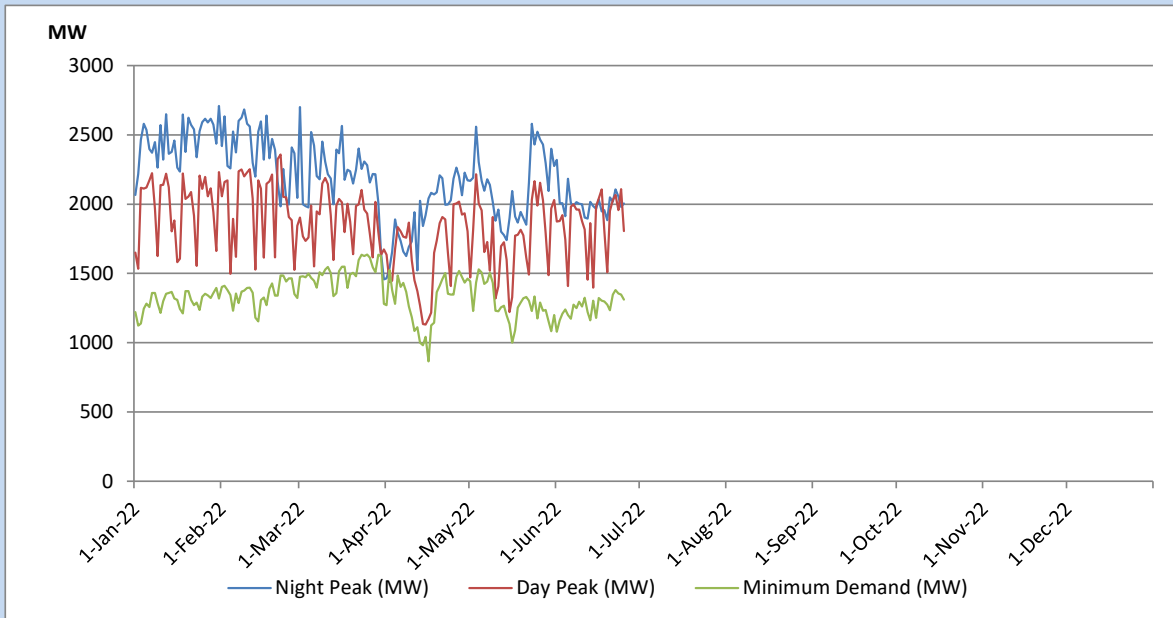


## Variation of Major Hydro Reservoir Levels in the current year (GWh)





## Variation of Demand during the current year

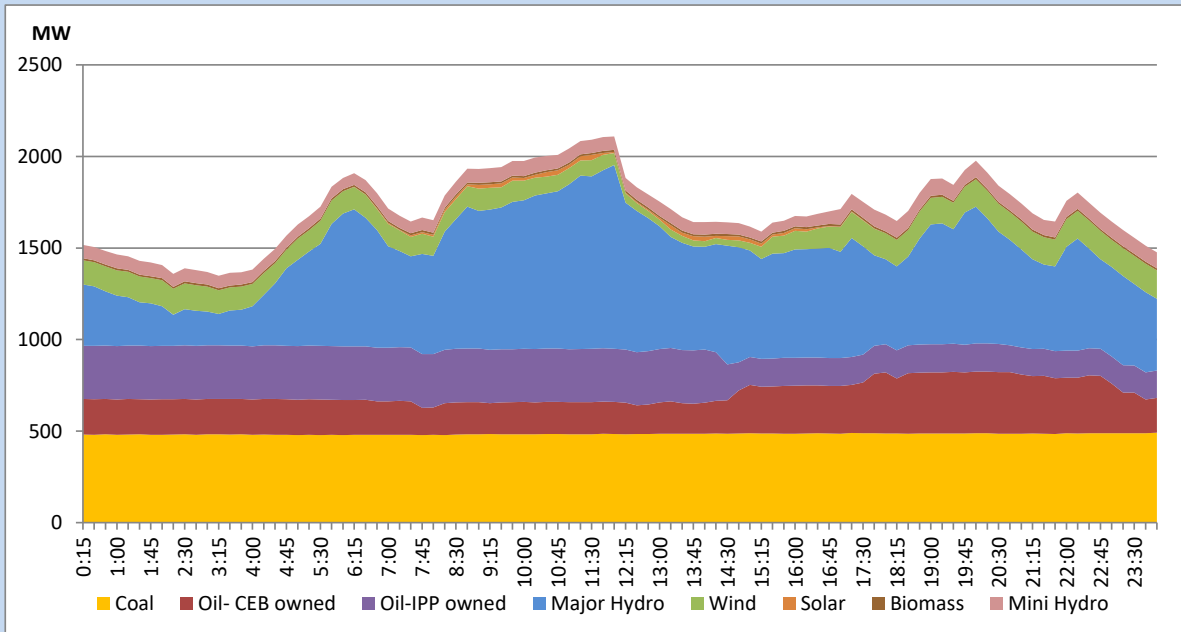


The above figures are excluding contribution from Roof Top Solar, 1MW solar, certain Wind plants and Mini Hydro plants

## Daily Load Curve of the Previous day

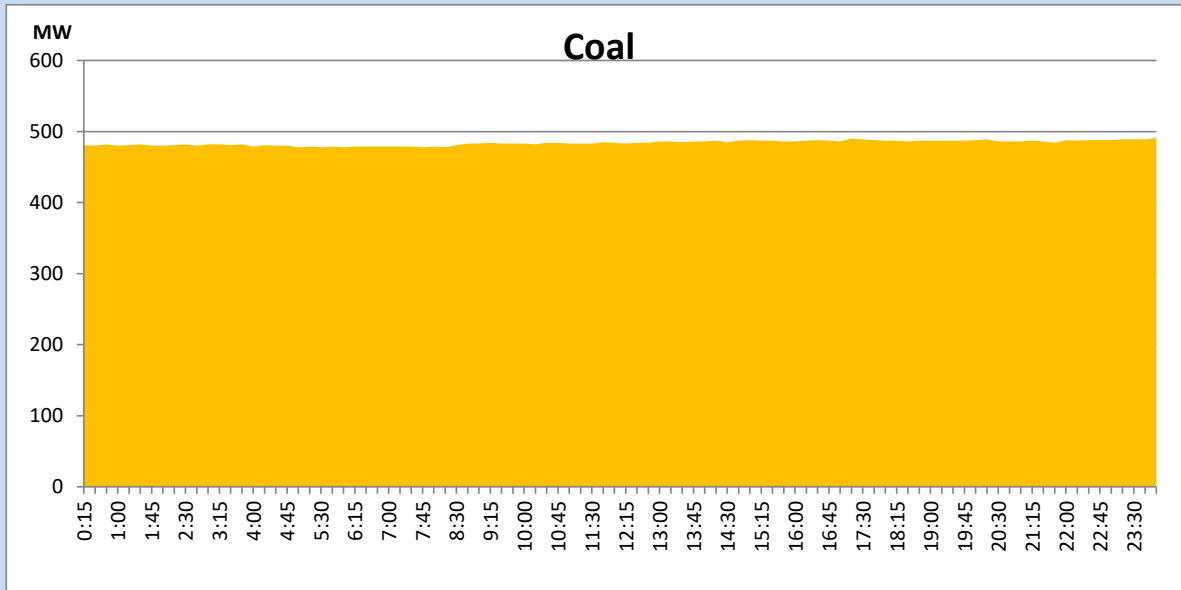
June 24, 2022

Solar and wind data is based on Telemetered Power Stations only



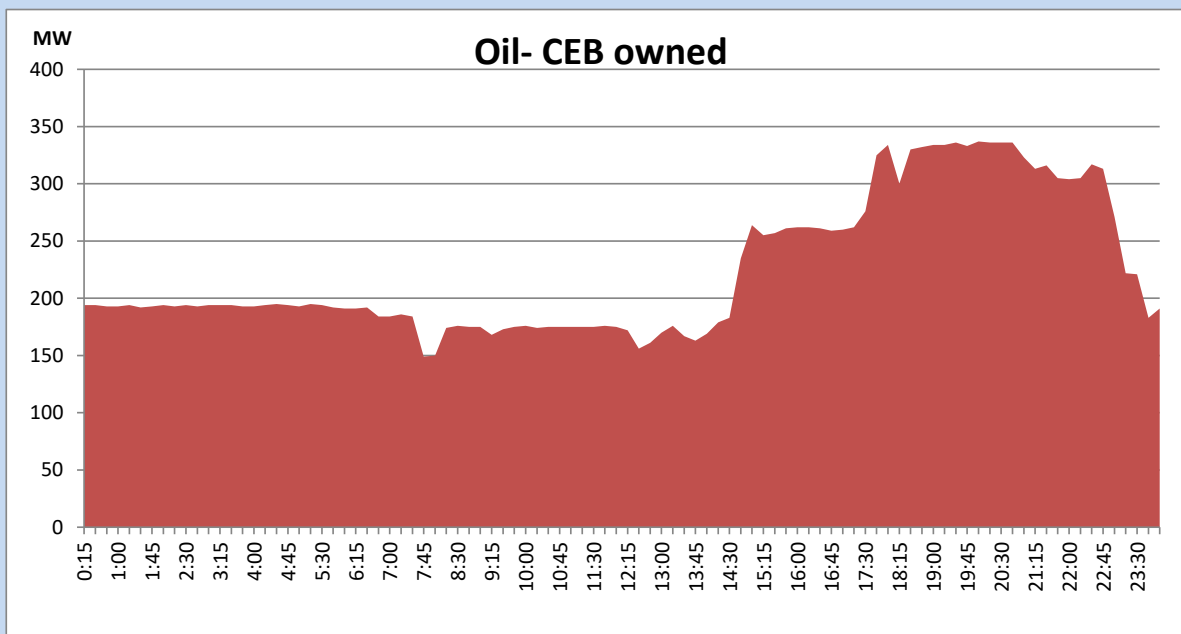
## Coal Generation during the Previous day

June 24, 2022



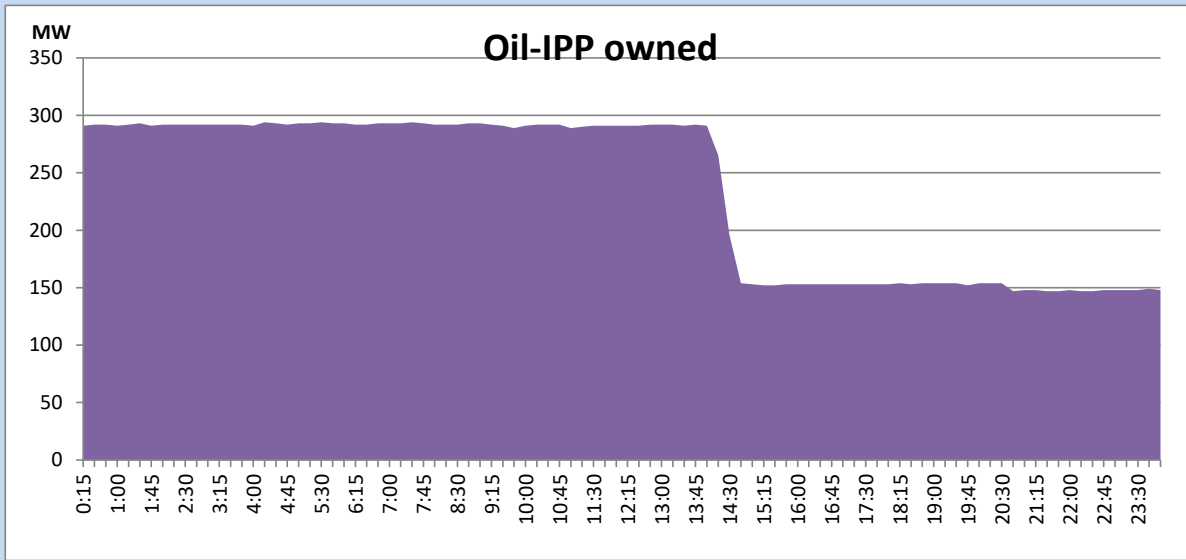
## CEB Oil Plant Generation during the Previous day

June 24, 2022



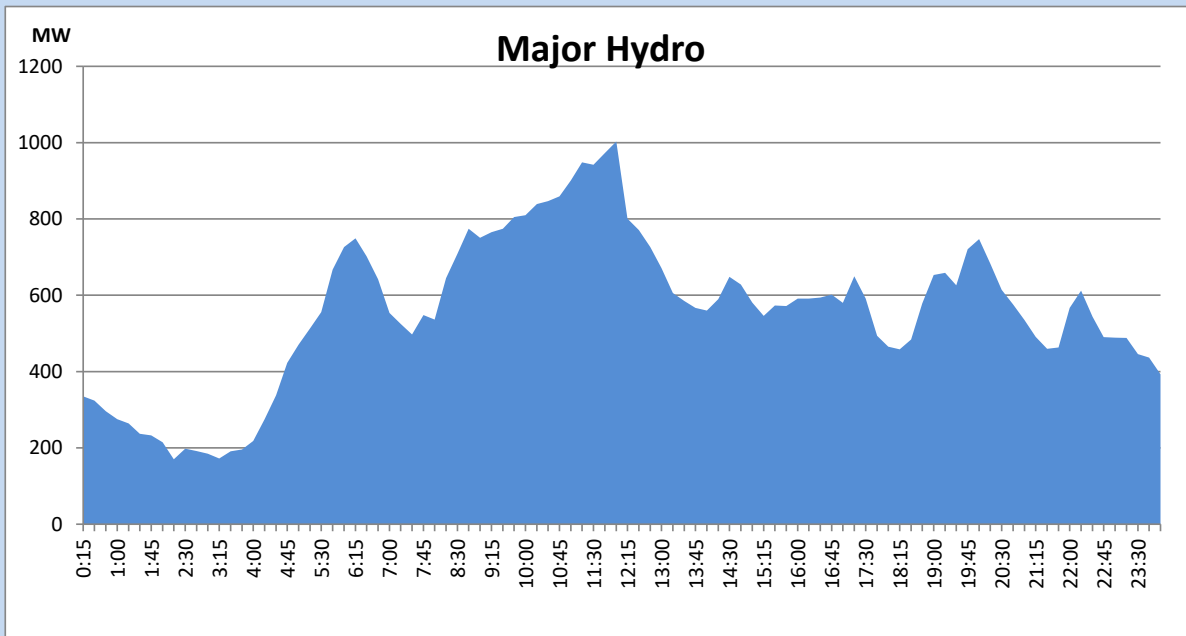
## IPP Oil Plant Generation during the Previous day

June 24, 2022



## Major Hydro Generation during the Previous day

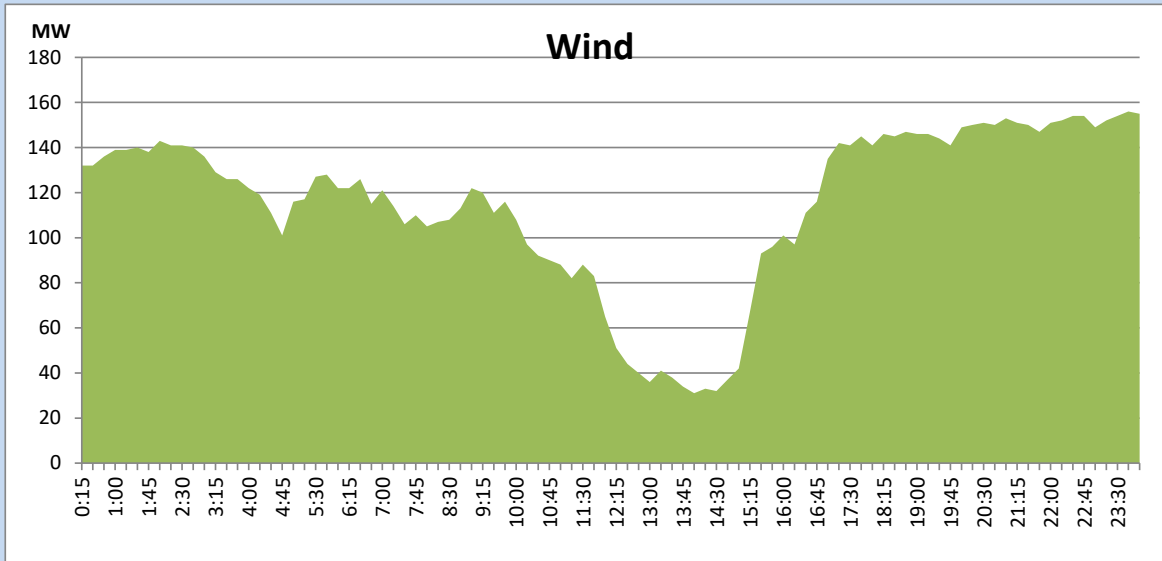
June 24, 2022



## Wind Generation during the Previous day

June 24, 2022

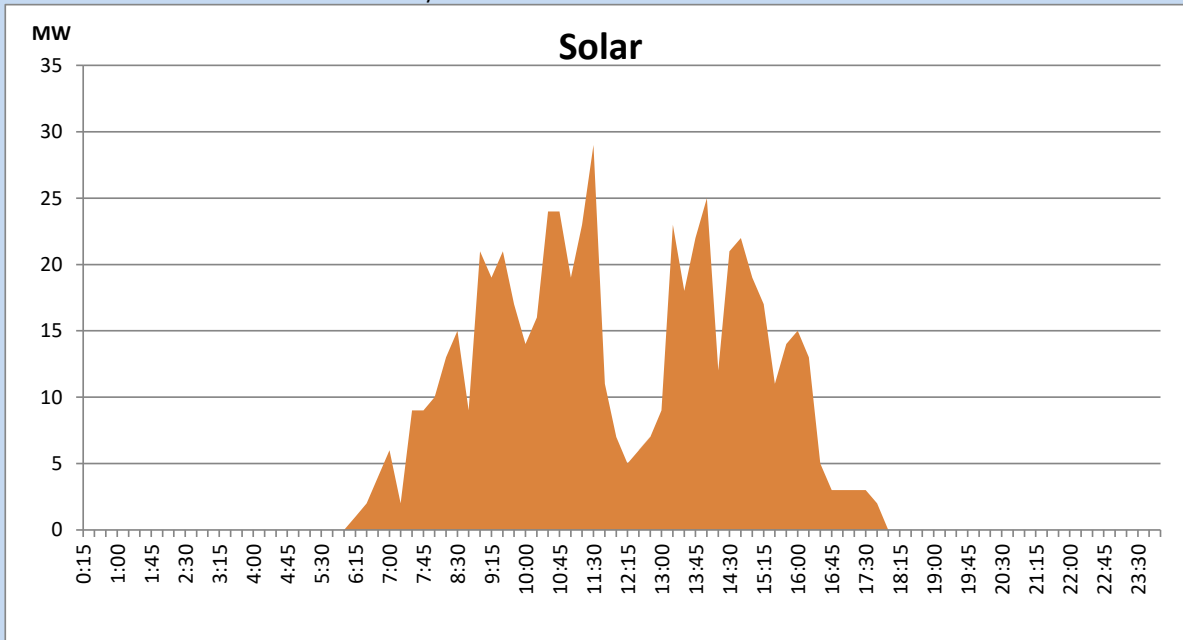
Based on Telemetered Power Stations only



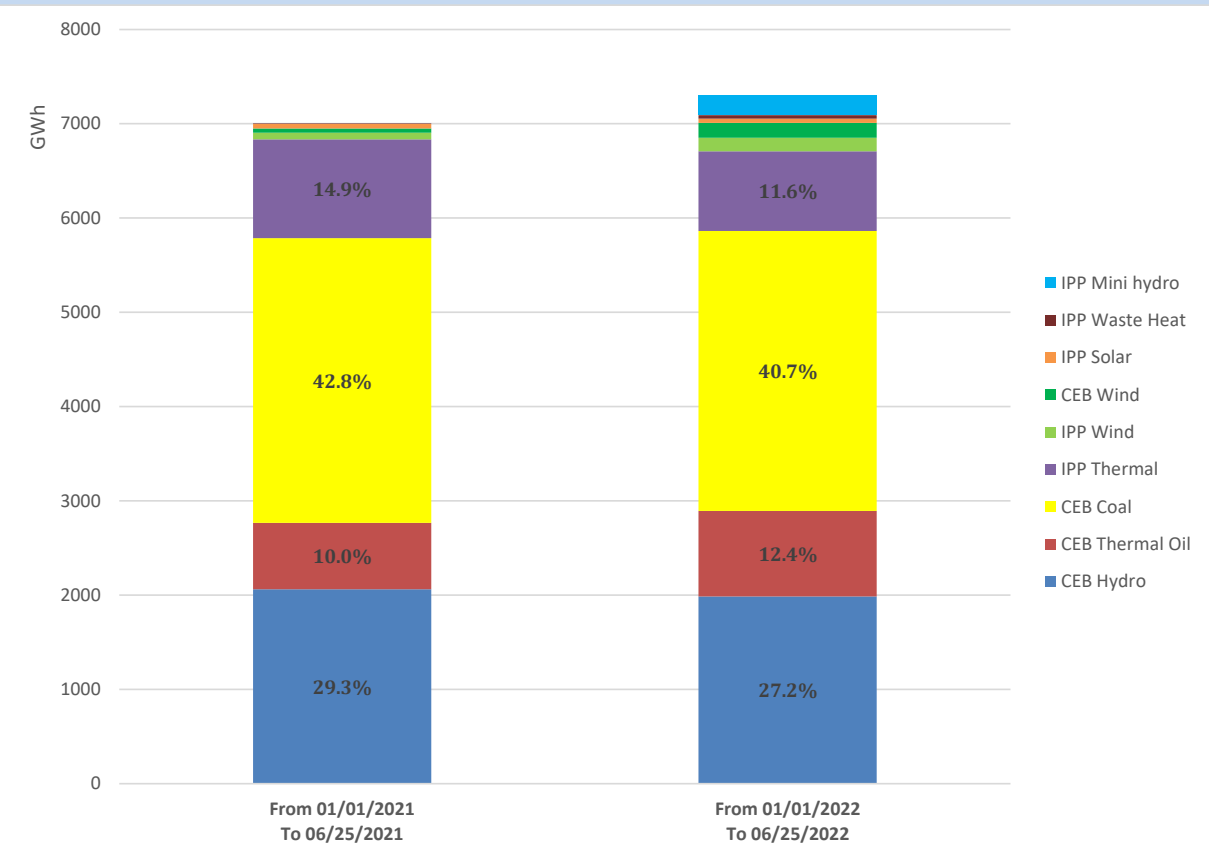
## Solar Generation during the Previous day

June 24, 2022

Based on Telemetered Power Stations only



# Cumulative Dispatch Comparison with Last Year



## Thermal Plant Fuel types

Power Station	Primary Fuel
CEB Thermal	
Sapugaskanda 1	Heavy Fuel
Sapugaskanda 2	Heavy Fuel
Kelanitissa Small Gas Turbines	Auto Diesel
GT 7 - Kelanitissa	Auto Diesel
Kelanitissa CCY	Naphtha or Diesel
Lakvijaya 1	Coal
Lakvijaya 2	Coal
Lakvijaya 3	Coal
Uthuru Janani	Heavy Fuel
Barge CEB	Heavy Fuel

Power Station	Primary Fuel
Private Thermal	
Sojitz - Kelanitissa	Auto Diesel
West Coast	Auto Diesel / Heavy Fuel
ACE Matara	Heavy Fuel
ACE Embilipitiya	Heavy Fuel

## Major Incidents during the day -as reported by CEB morning of

June 26, 2022

- 1) Rotational manual load shedding was carried out from 09:30hrs to 22:00hrs.