

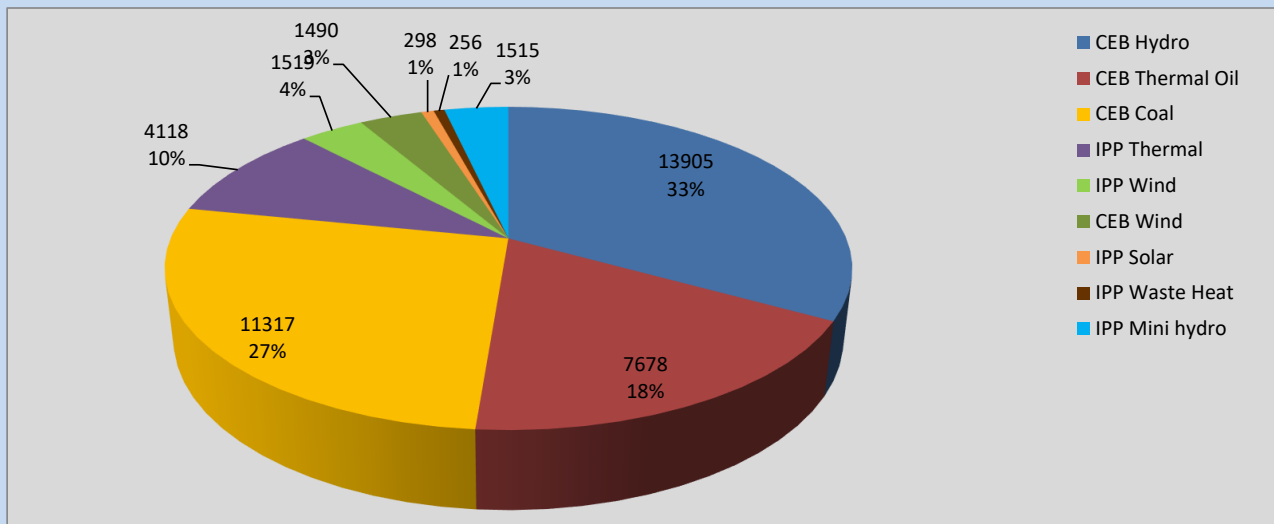
Generation and Reservoirs Statistics

June 21, 2022



PUBLIC UTILITIES COMMISSION OF SRI LANKA

Daily Generation Mix in MWh



Total Generation **42,096 MWh**

Note: Above data is excluding contribution from Roof Top Solar, 1MW Solar and certain Mini Hydro plants

Cumulative Dispatch

Note: Following data is Excluding contribution from Roof Top Solar, 1MW solar and Mini Hydro plants

For Current Month

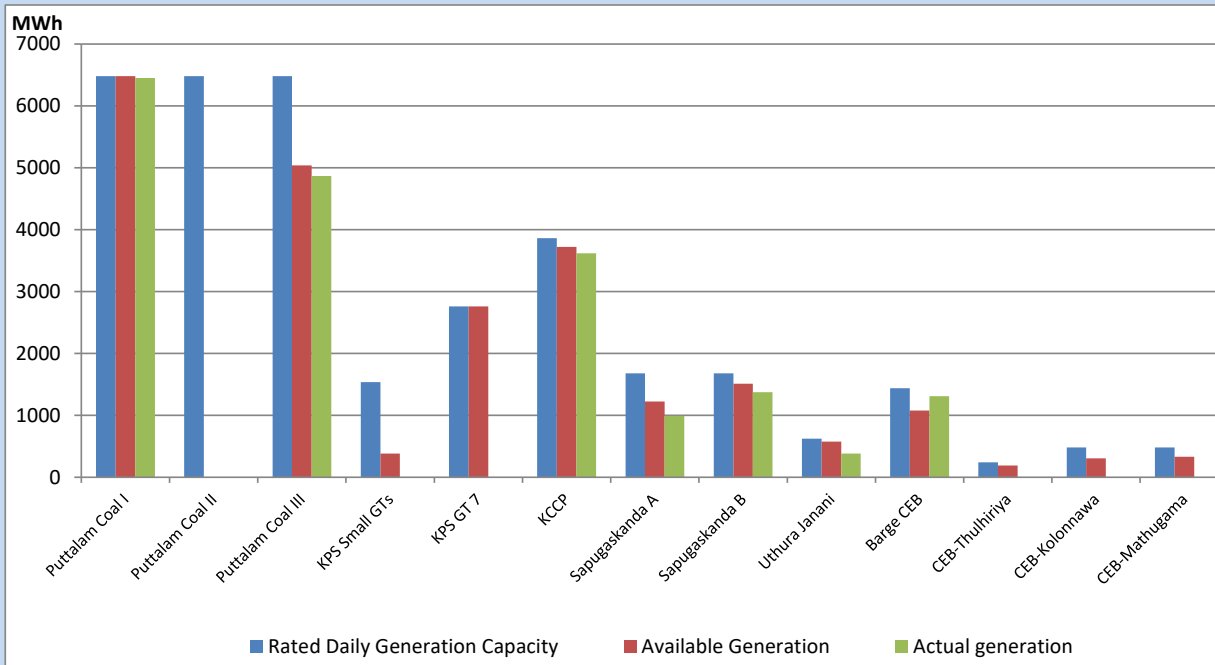
Category	Dispatch (GWh)	Percentage
CEB Hydro	320.36	38.05%
CEB Thermal Oil	27.85	3.31%
CEB Coal	357.57	42.47%
IPP Thermal	16.13	1.92%
SPP Wind	34.50	4.10%
CEB Wind	36.79	4.37%
SPP Solar	4.79	0.57%
SPP Solid Waste	4.82	0.57%
Mini Hydro	39.08	4.64%
Total	841.89	

For Current Year

Category	Dispatch (GWh)	Percentage
CEB Hydro	1,929.4	27.04%
CEB Thermal Oil	886.3	12.42%
CEB Coal	2,923.8	40.98%
IPP Thermal	824.6	11.56%
SPP Wind	135.4	1.90%
CEB Wind	153.5	2.15%
SPP Solar	43.8	0.61%
SPP Solid Waste	36.1	0.51%
Mini Hydro	202.8	2.84%
Total	7,135.6	

CEB owned Thermal Plant Dispatch

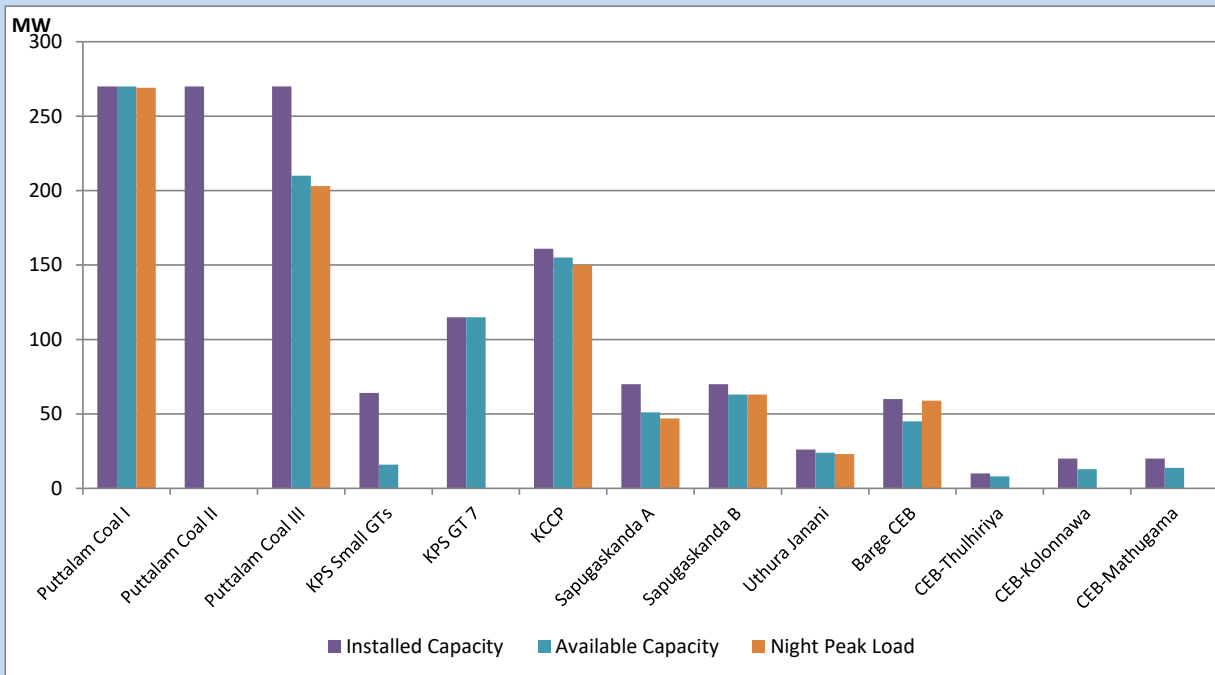
June 21, 2022



Available Generation is estimated based on plant availability at 6.00am on

June 22, 2022

CEB owned Thermal Plant Loading at the Night Peak



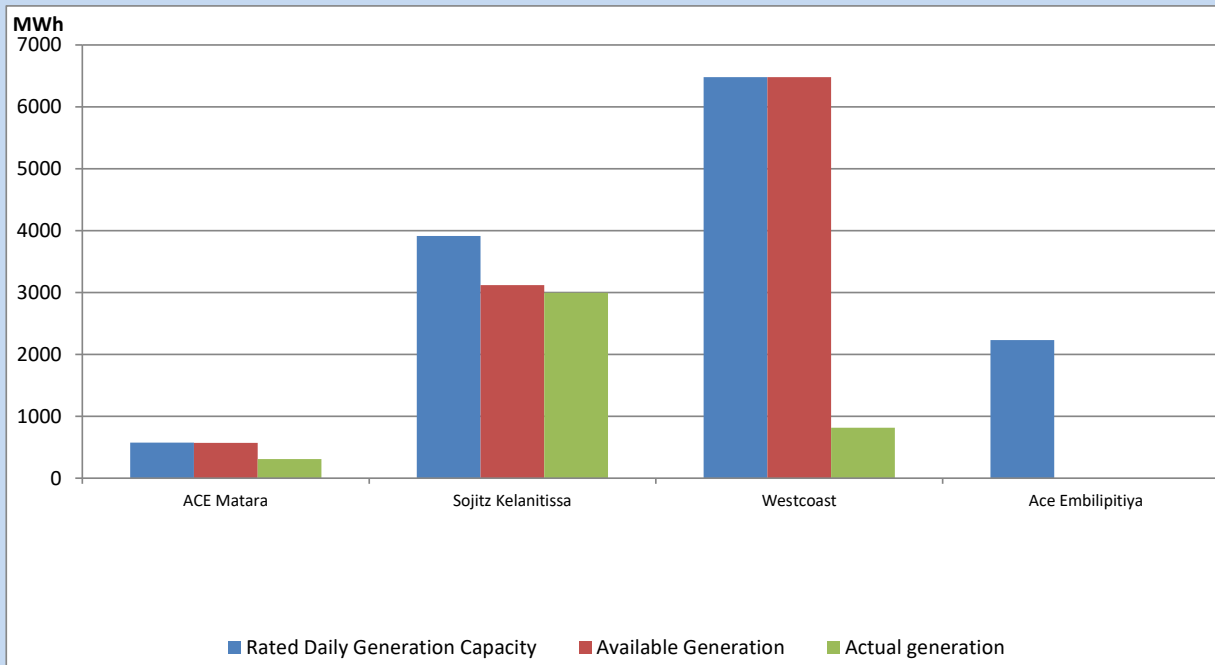
Note- Plant availability is recorded at 6.00 am on

June 22, 2022

IPP owned Thermal Plant Dispatch

June 21, 2022

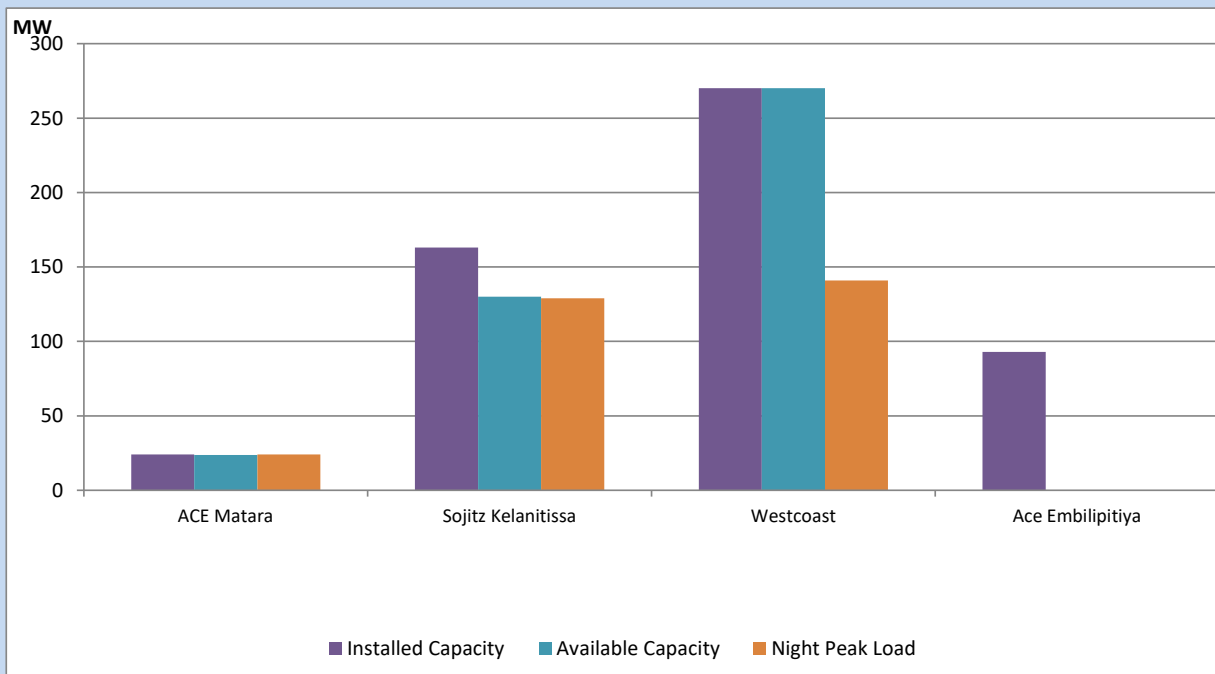
Asia Power, V Power Pallekale, Vpower Galle, V Power Horana, Vpower Hambantota, Vpower Valachchena and Altaqa Mahiyanganaya are not available due to expiration of PPAs



Available Generation is estimated based on plant availability at 6.00am on

June 22, 2022

IPP owned Thermal Plant Loading at the Night Peak

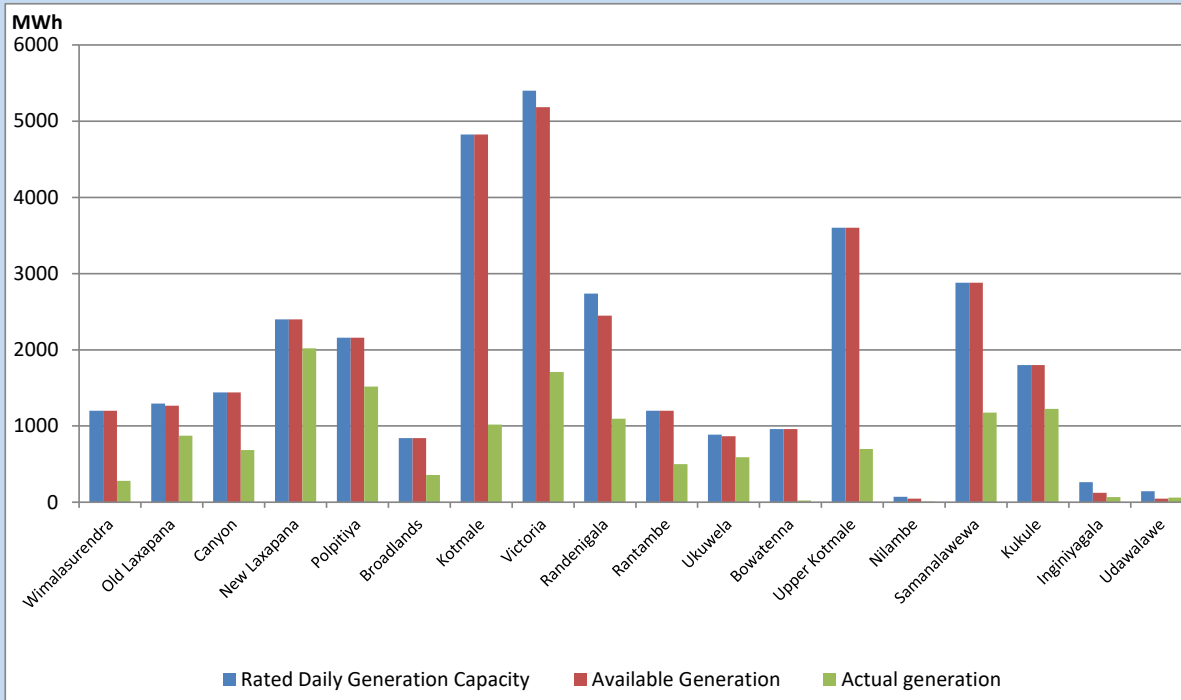


Note- Plant availability is recorded at 6.00 am on

June 22, 2022

Major Hydro Plant Dispatch

June 21, 2022

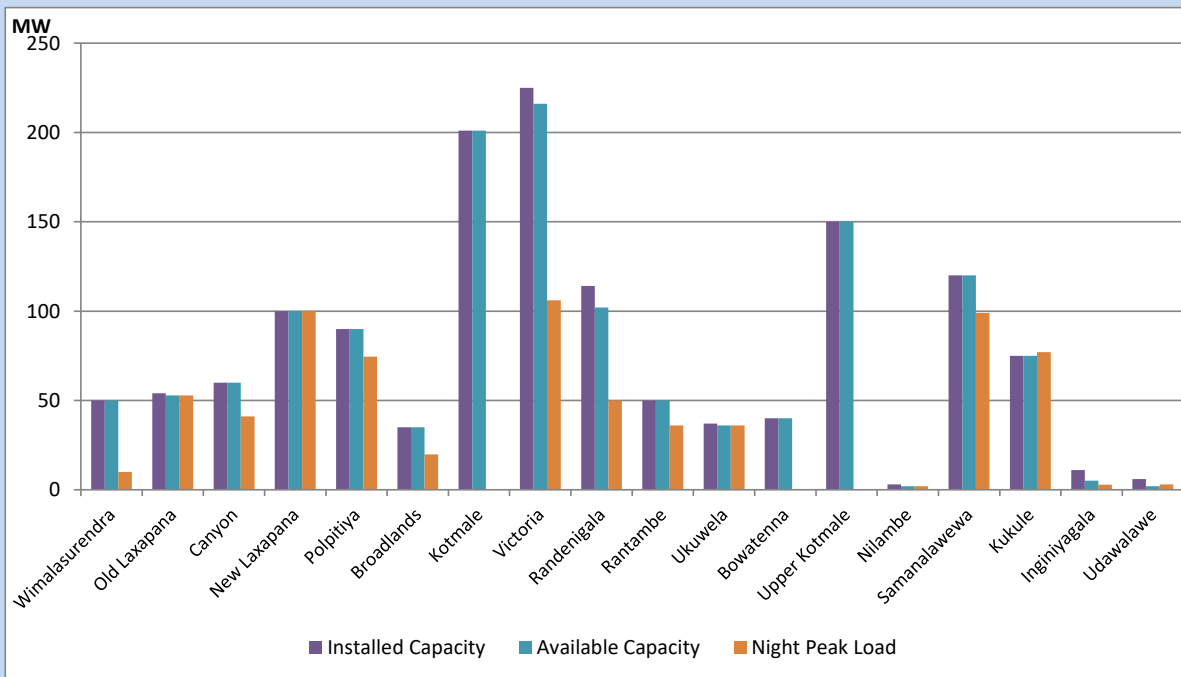


Available Generation is estimated based on plant availability at 6.00am on June 22, 2022
 Broadlands power plant is operating in the Commissioning Stage

June 22, 2022

Major Hydro Plant Loading at Night Peak

June 21, 2022



Note- Plant availability is recorded at 6.00 am on June 22, 2022
 Broadlands power plant is operating in the Commissioning Stage

Summary of Major Plant performance

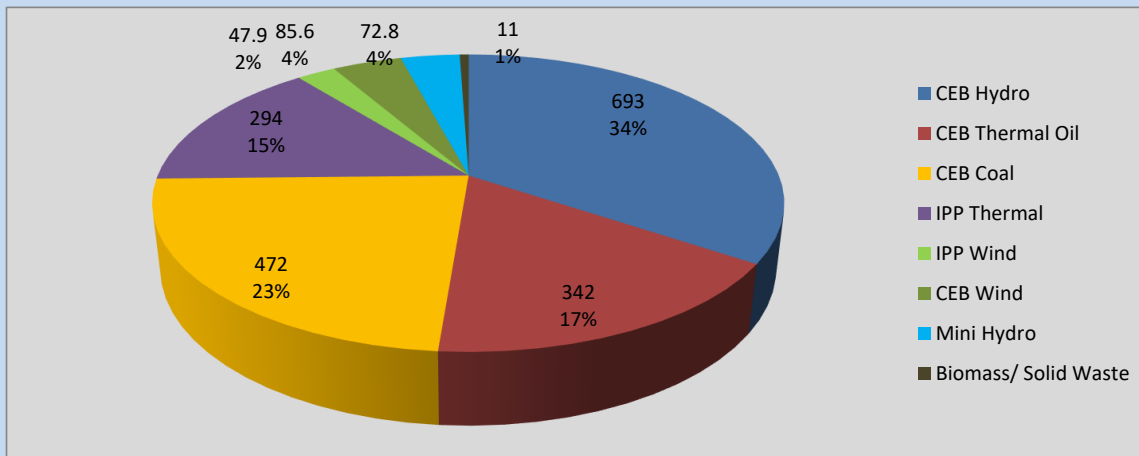
Plant	Installed Capacity	Plant Availability	Night peak Load	Plant Dispatch
	(MW)	(MW)	(MW)	(MWh)
Wimalasurendra	50	50	10	281
Old Laxapana	54	53	53	872
Canyon	60	60	41	685
New Laxapana	100	100	100	2,020
Polpitiya	90	90	75	1,518
Broadlands	35	35	20	358
Kotmale	201	201	0	1,020
Victoria	225	216	106	1,709
Randenigala	114	102	50	1,095
Rantambe	50	50	36	500
Ukuwela	37	36	36	592
Bowatenna	40	40	0	22
Upper Kotmale	150	150	0	697
Nilambe	3	2	2	7
Samanalawewa	120	120	99	1,175
Kukule	75	75	77	1,224
Inginiyagala	11	5	3	69
Udawalawe	6	2	3	61
Puttalam Coal I	270	270	269	6,450
Puttalam Coal II	270	0	0	0
Puttalam Coal III	270	210	203	4,867
KPS Small GTs	64	16	0	0
KPS GT 7	115	115	0	0
KCCP	161	155	150	3,619
Sapugaskanda A	70	51	47	992
Sapugaskanda B	70	63	63	1,376
Uthura Janani	26	24	23	382
Barge CEB	60	45	59	1,309
CEB-Thulhiriya	10	8	0	0
CEB-Kolonnawa	20	13	0	0
CEB-Mathugama	20	14	0	0
ACE Matara	24	24	24	310
Sojitz Kelanitissa	163	130	129	2,994
West Coast	270	270	141	814
ACE Embilipitiya	93	0	0	0
Total	3,397	2,794	2,035	42,096

Plant availability is the availability recorded at 6 am on

June 22, 2022

Contribution to the Night Peak in MW

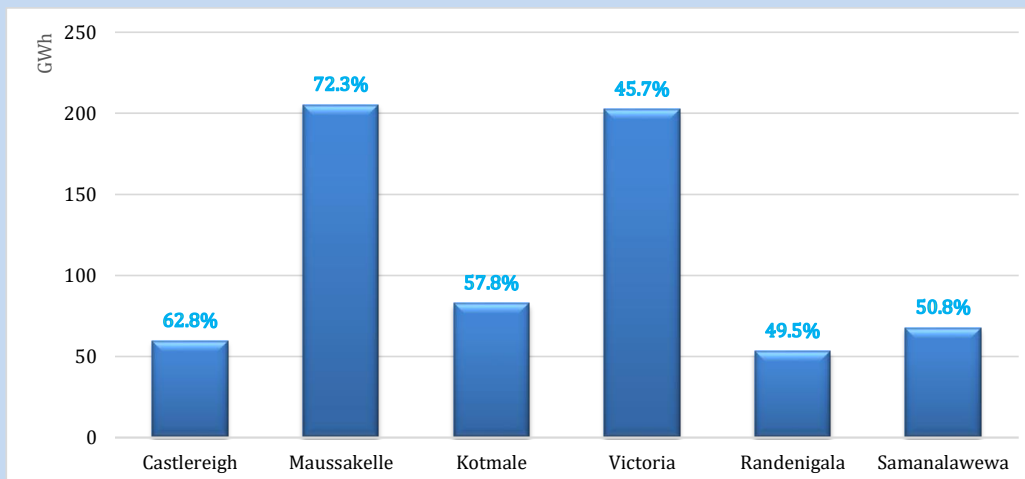
June 21, 2022



Night Peak*	2,018.3 MW
Day Peak	2,030.5 MW
Minimum Demand	1,348.2 MW

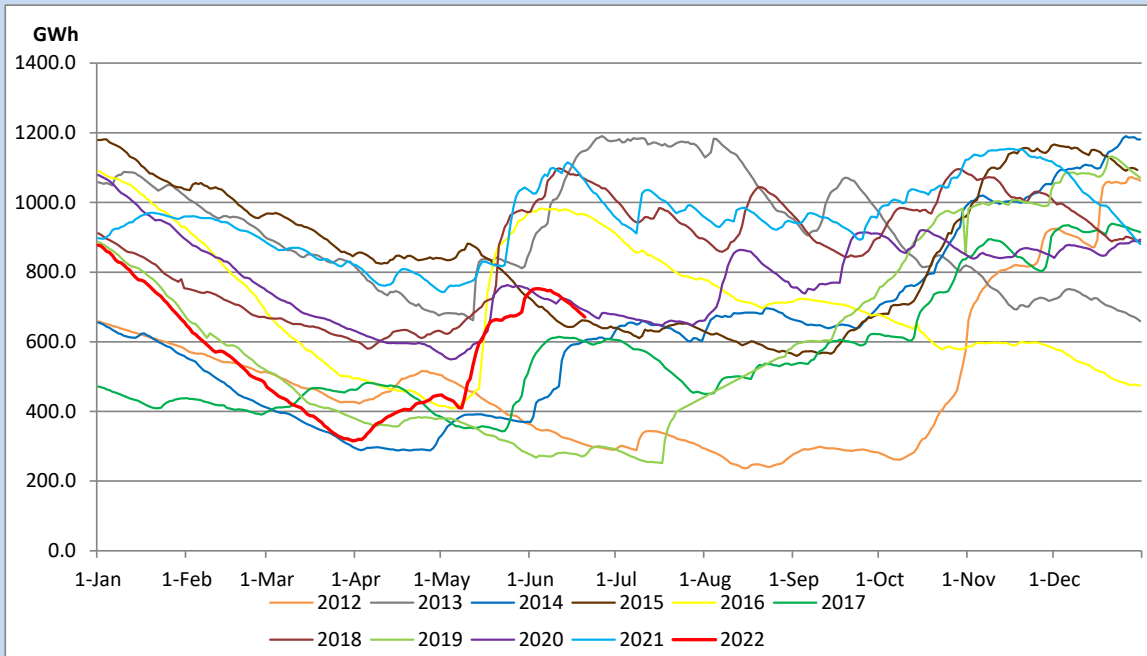
Above figures are excluding contribution from Roof Top Solar, 1MW solar, certain Wind plants and Mini Hydro plants

Reservoir Levels - as at 06.00 Hr on June 22, 2022

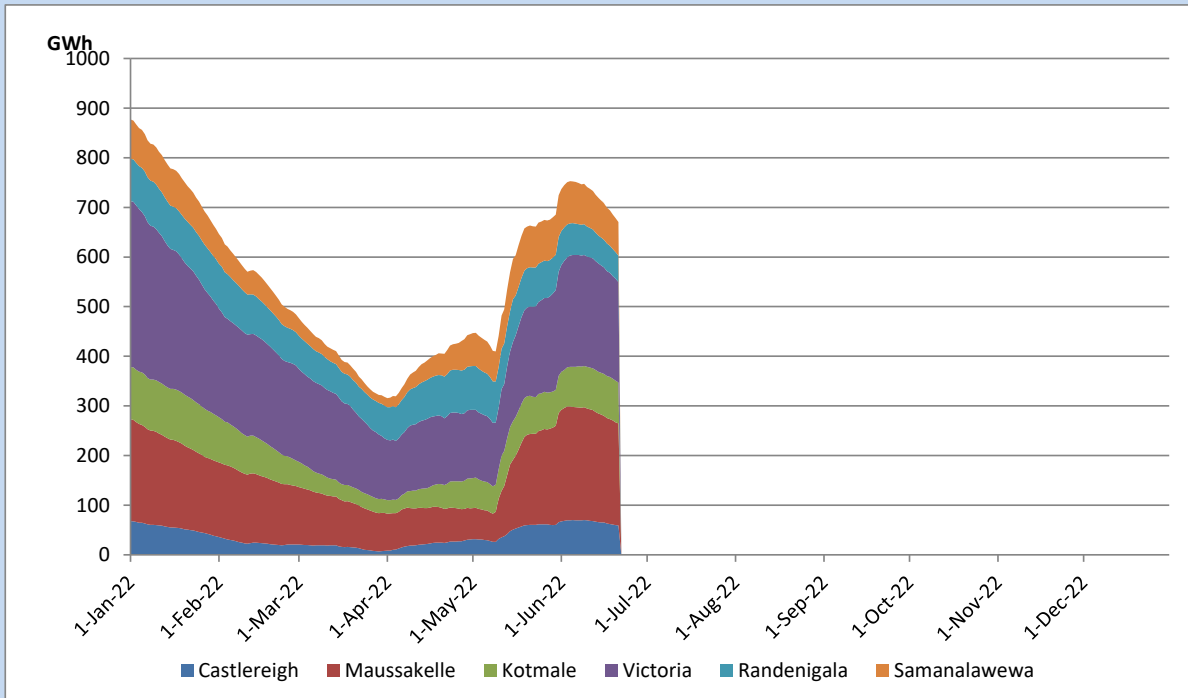


Total Reservoir Level	670.6 GWh
% of Total capacity	55.6%

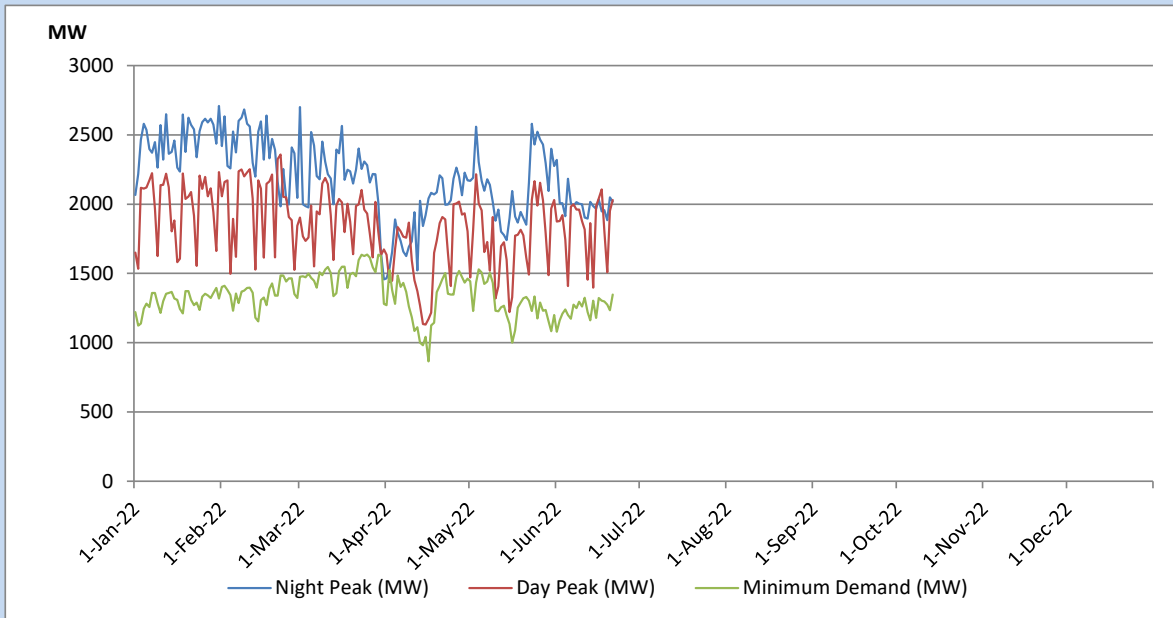
Comparison of Total Reservoir Storage Levels with Past Years



Variation of Major Hydro Reservoir Levels in the current year (GWh)



Variation of Demand during the current year

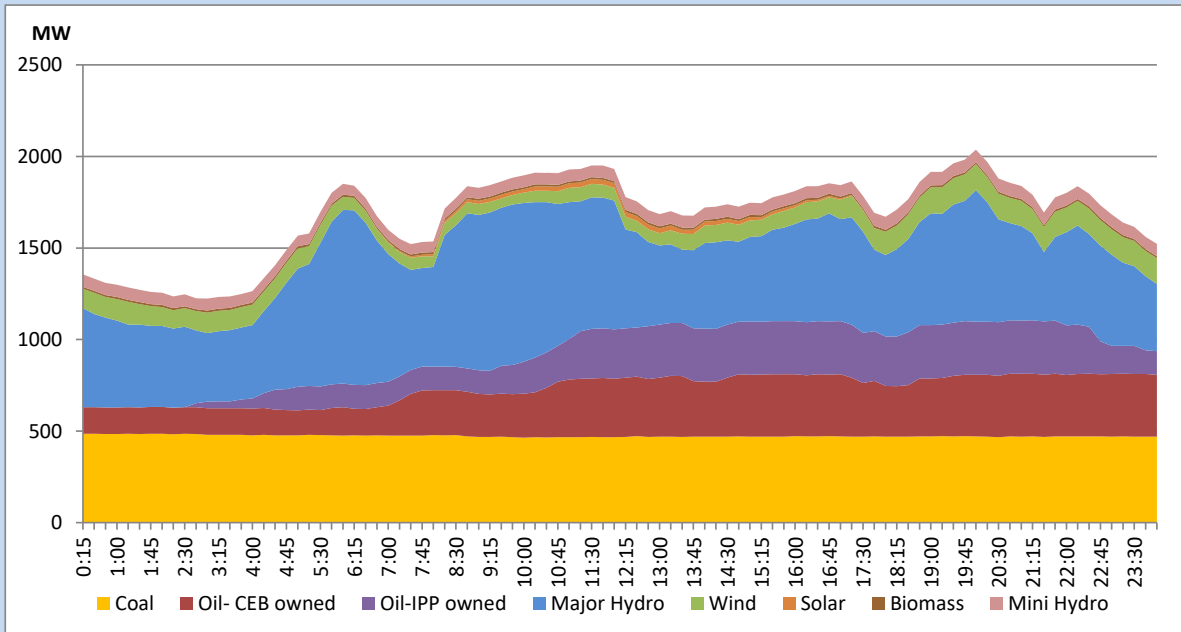


The above figures are excluding contribution from Roof Top Solar, 1MW solar, certain Wind plants and Mini Hydro plants

Daily Load Curve of the Previous day

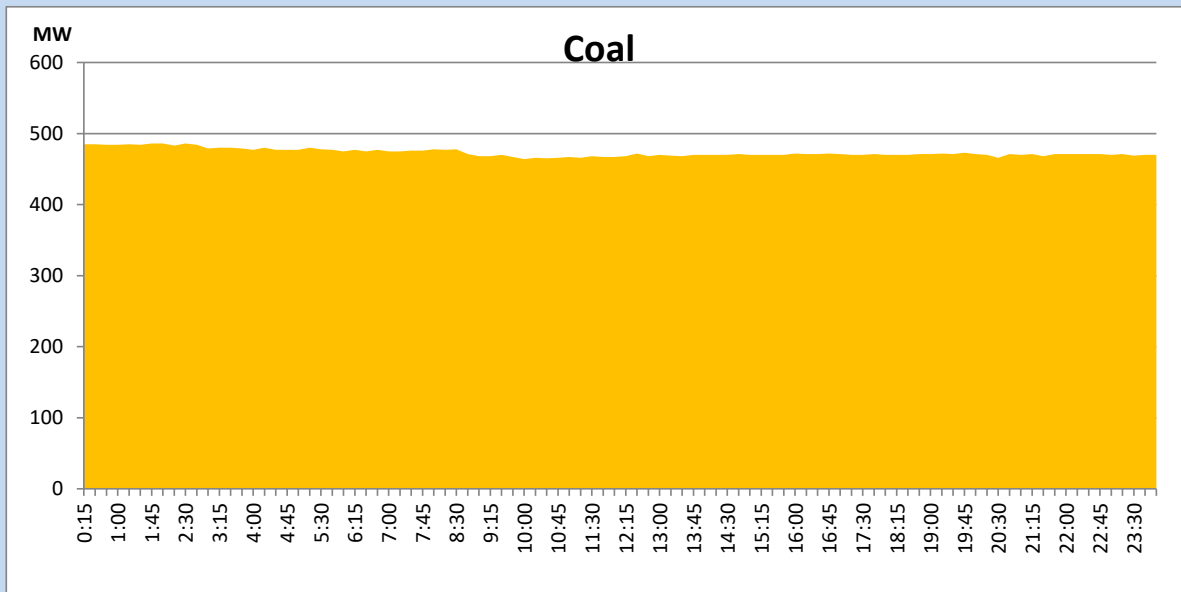
June 20, 2022

Solar and wind data is based on Telemetered Power Stations only



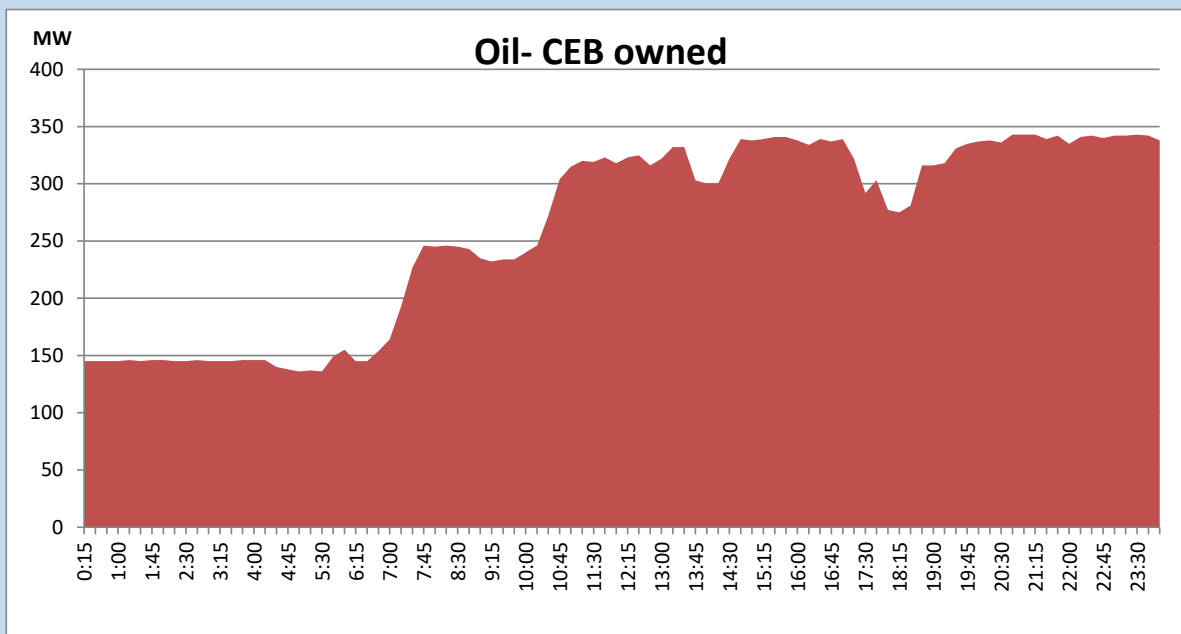
Coal Generation during the Previous day

June 20, 2022



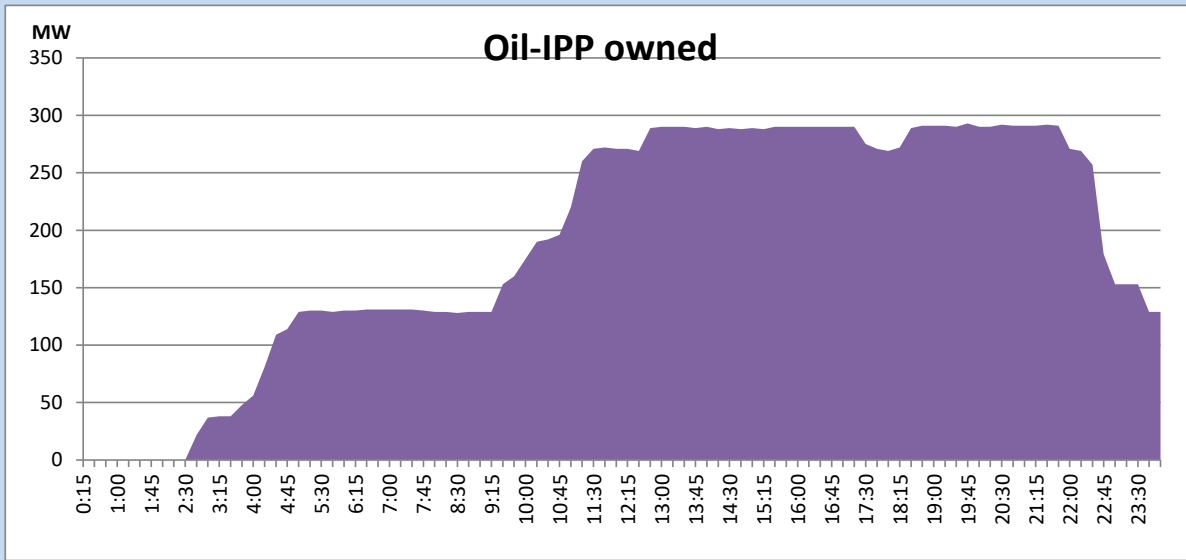
CEB Oil Plant Generation during the Previous day

June 20, 2022



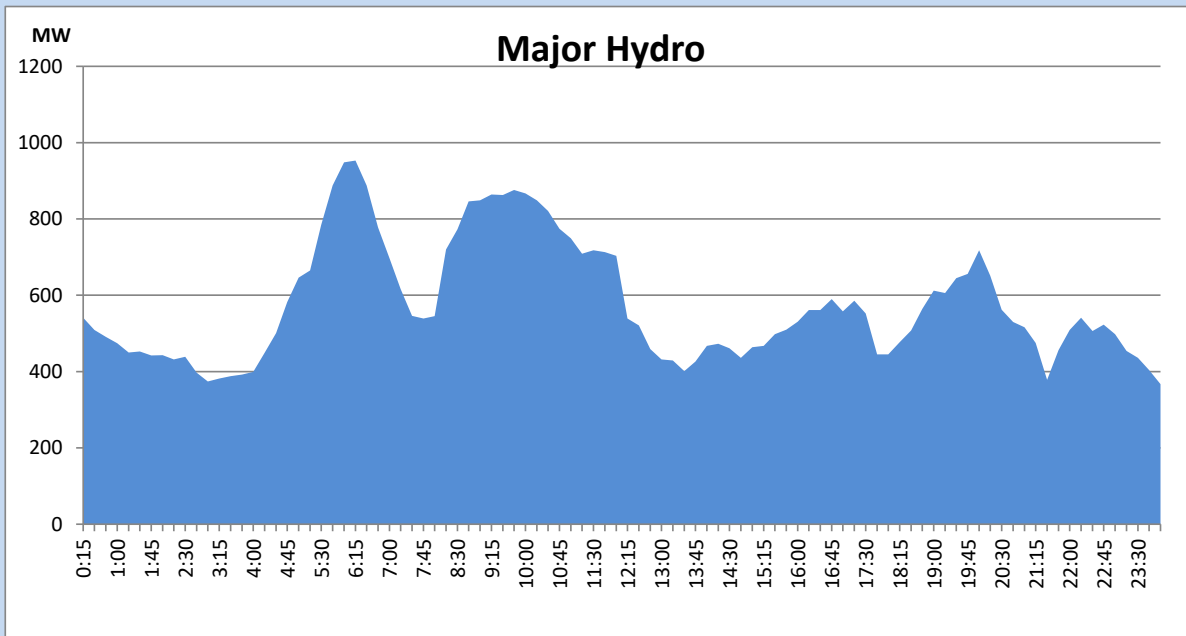
IPP Oil Plant Generation during the Previous day

June 20, 2022



Major Hydro Generation during the Previous day

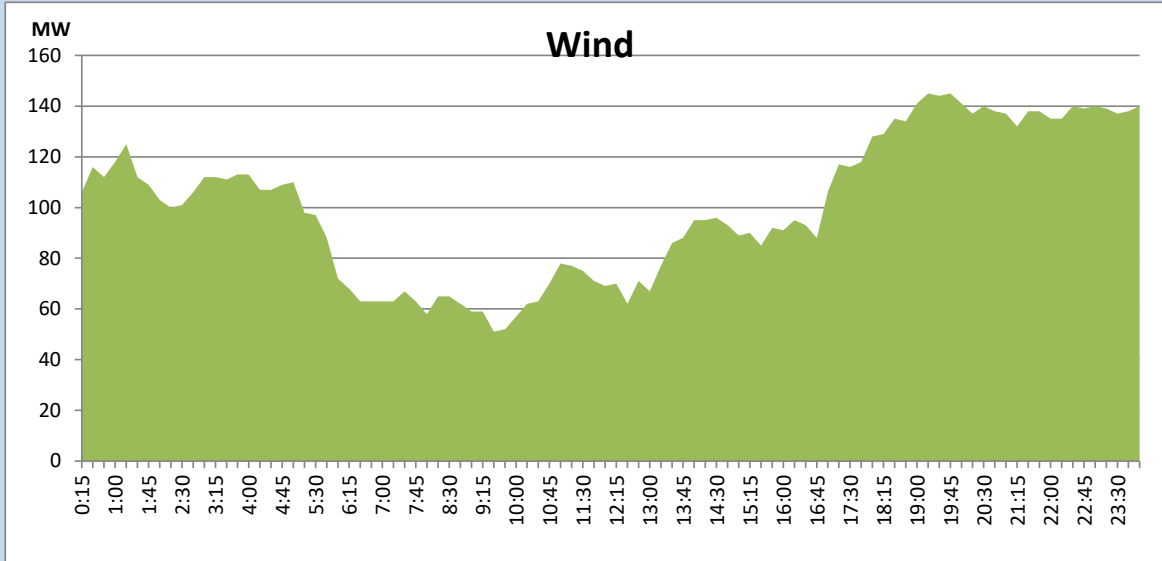
June 20, 2022



Wind Generation during the Previous day

June 20, 2022

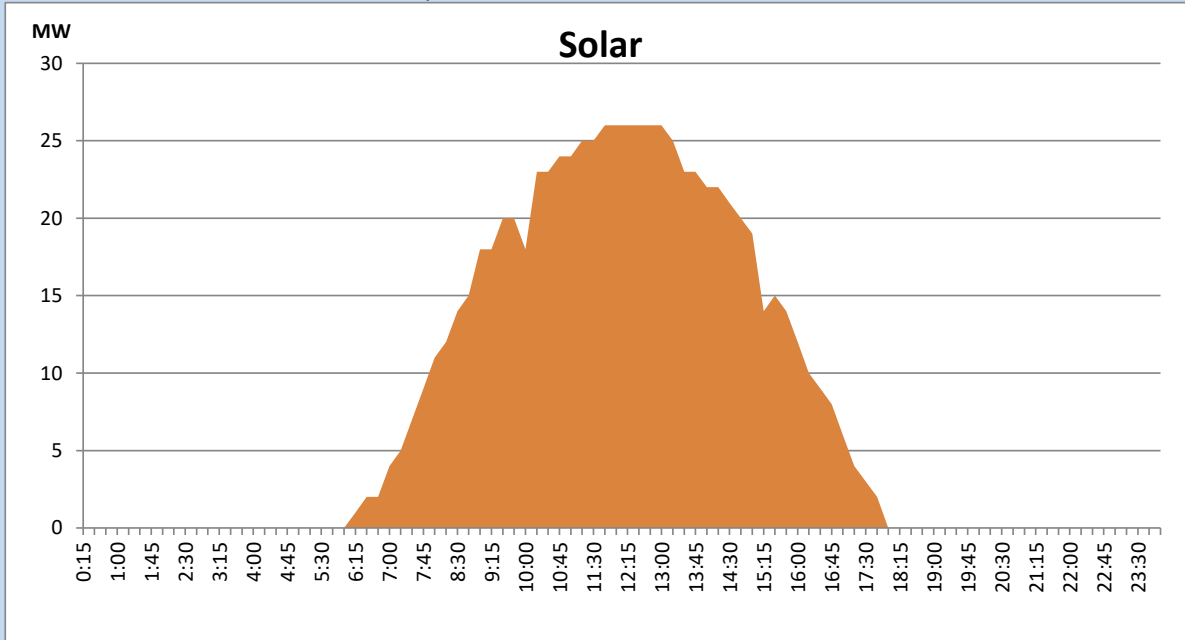
Based on Telemetered Power Stations only



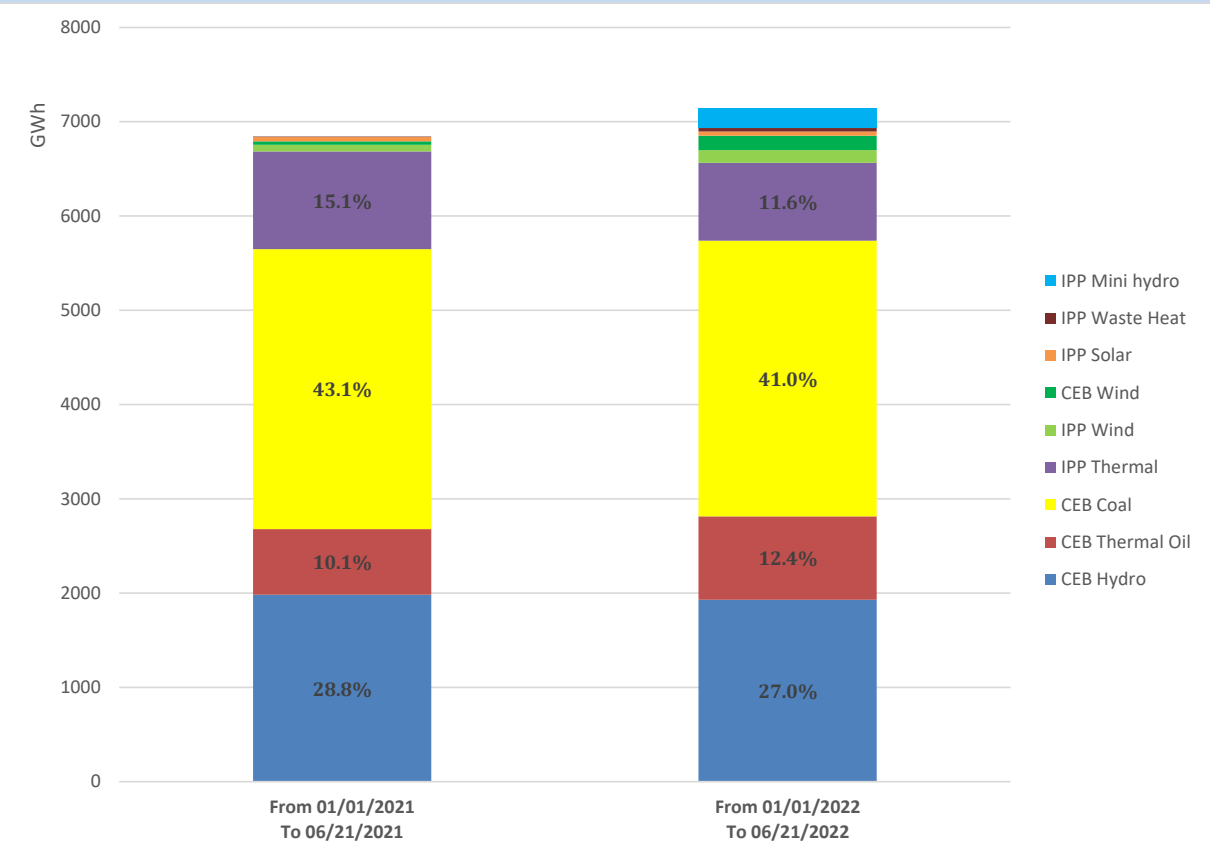
Solar Generation during the Previous day

June 20, 2022

Based on Telemetered Power Stations only



Cumulative Dispatch Comparison with Last Year



Thermal Plant Fuel types

Power Station	Primary Fuel
CEB Thermal	
Sapugaskanda 1	Heavy Fuel
Sapugaskanda 2	Heavy Fuel
Kelanitissa Small Gas Turbines	Auto Diesel
GT 7 - Kelanitissa	Auto Diesel
Kelanitissa CCY	Naphtha or Diesel
Lakvijaya 1	Coal
Lakvijaya 2	Coal
Lakvijaya 3	Coal
Uthuru Janani	Heavy Fuel
Barge CEB	Heavy Fuel

Power Station	Primary Fuel
Private Thermal	
Sojitz - Kelanitissa	Auto Diesel
West Coast	Auto Diesel / Heavy Fuel
ACE Matara	Heavy Fuel
ACE Embilipitiya	Heavy Fuel

Major Incidents during the day -as reported by CEB morning of

June 22, 2022

1) Rotational manual load shedding was carried out from 05:00hrs to 08:30hrs and from 12:00hrs to 22:00hrs.