

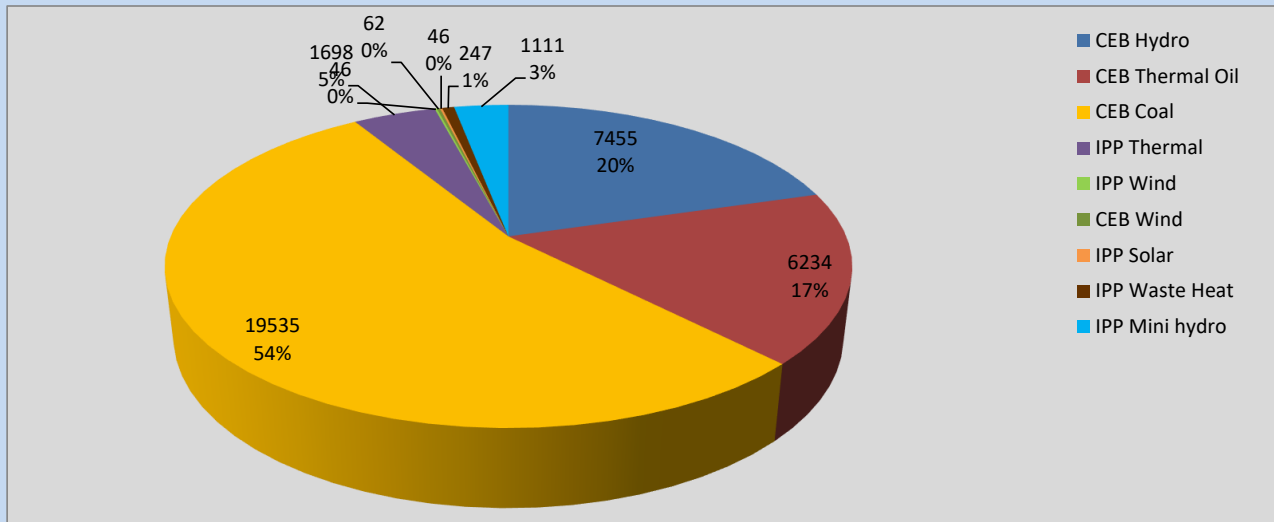
Generation and Reservoirs Statistics

April 24, 2022



PUBLIC UTILITIES COMMISSION OF SRI LANKA

Daily Generation Mix in MWh



Total Generation

36,702 MWh

Note: Above data is excluding contribution from Roof Top Solar, 1MW Solar and certain Mini Hydro plants

Cumulative Dispatch

Note: Following data is Excluding contribution from Roof Top Solar, 1MW solar and Mini Hydro plants

For Current Month

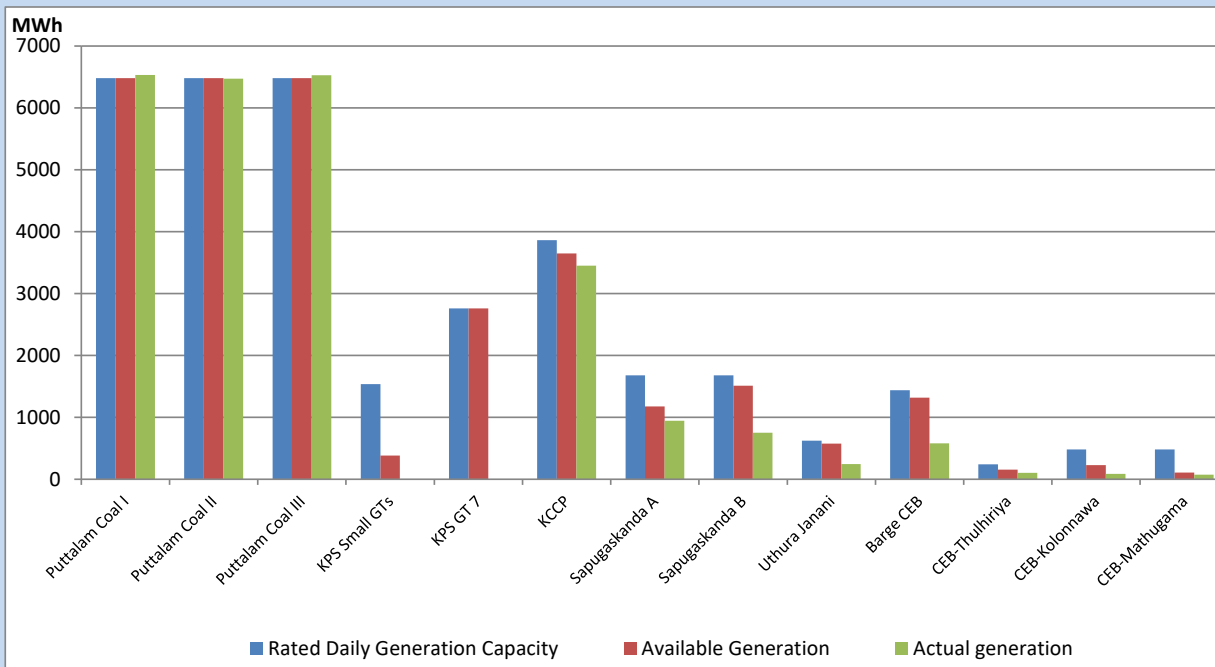
Category	Dispatch (GWh)	Percentage
CEB Hydro	170.37	19.38%
CEB Thermal Oil	98.06	11.16%
CEB Coal	455.09	51.77%
IPP Thermal	99.32	11.30%
SPP Wind	6.91	0.79%
CEB Wind	8.86	1.01%
SPP Solar	6.03	0.69%
SPP Solid Waste	5.08	0.58%
Mini Hydro	29.31	3.33%
Total	879.03	

For Current Year

Category	Dispatch (GWh)	Percentage
CEB Hydro	1,100.3	22.94%
CEB Thermal Oil	739.2	15.41%
CEB Coal	2,005.6	41.81%
IPP Thermal	692.2	14.43%
SPP Wind	49.3	1.03%
CEB Wind	62.6	1.31%
SPP Solar	29.7	0.62%
SPP Solid Waste	22.8	0.48%
Mini Hydro	95.7	2.00%
Total	4,797.1	

CEB owned Thermal Plant Dispatch

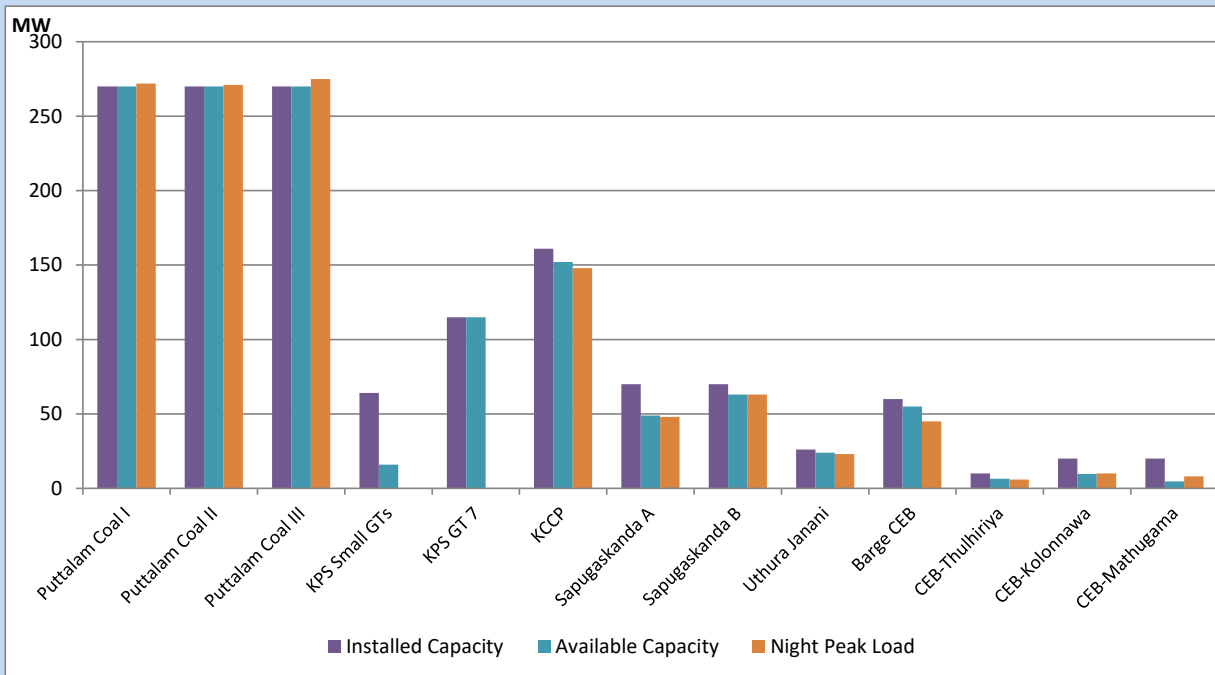
April 24, 2022



Available Generation is estimated based on plant availability at 6.00am on

April 25, 2022

CEB owned Thermal Plant Loading at the Night Peak



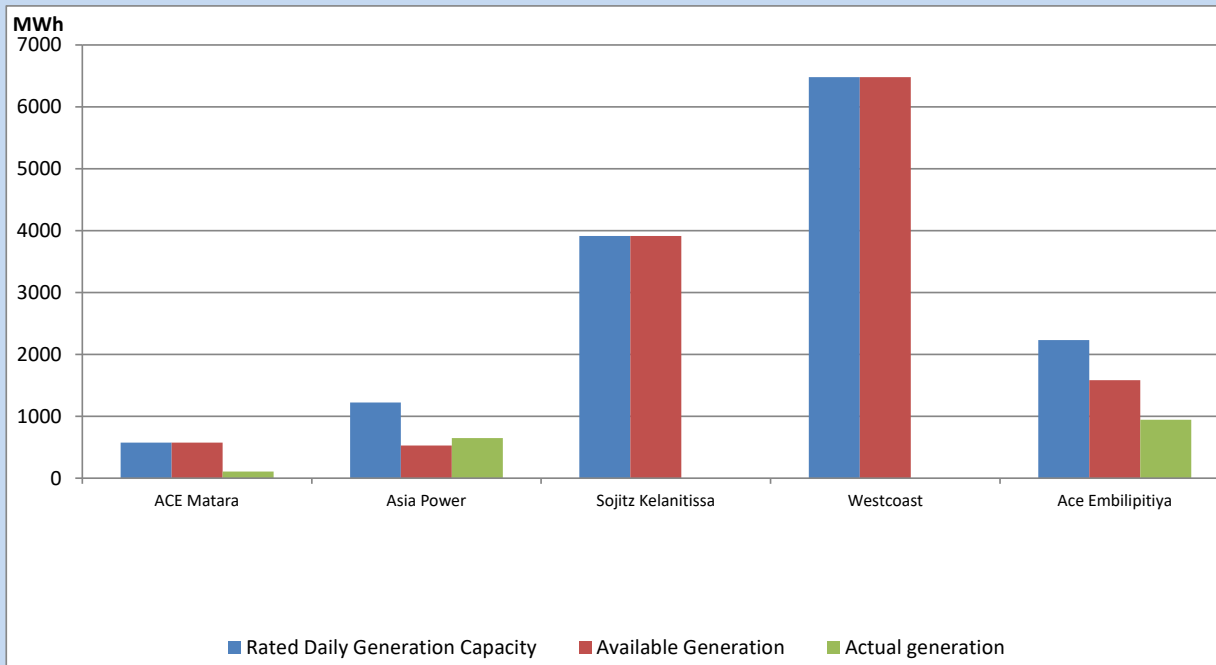
Note- Plant availability is recorded at 6.00 am on

April 25, 2022

IPP owned Thermal Plant Dispatch

April 24, 2022

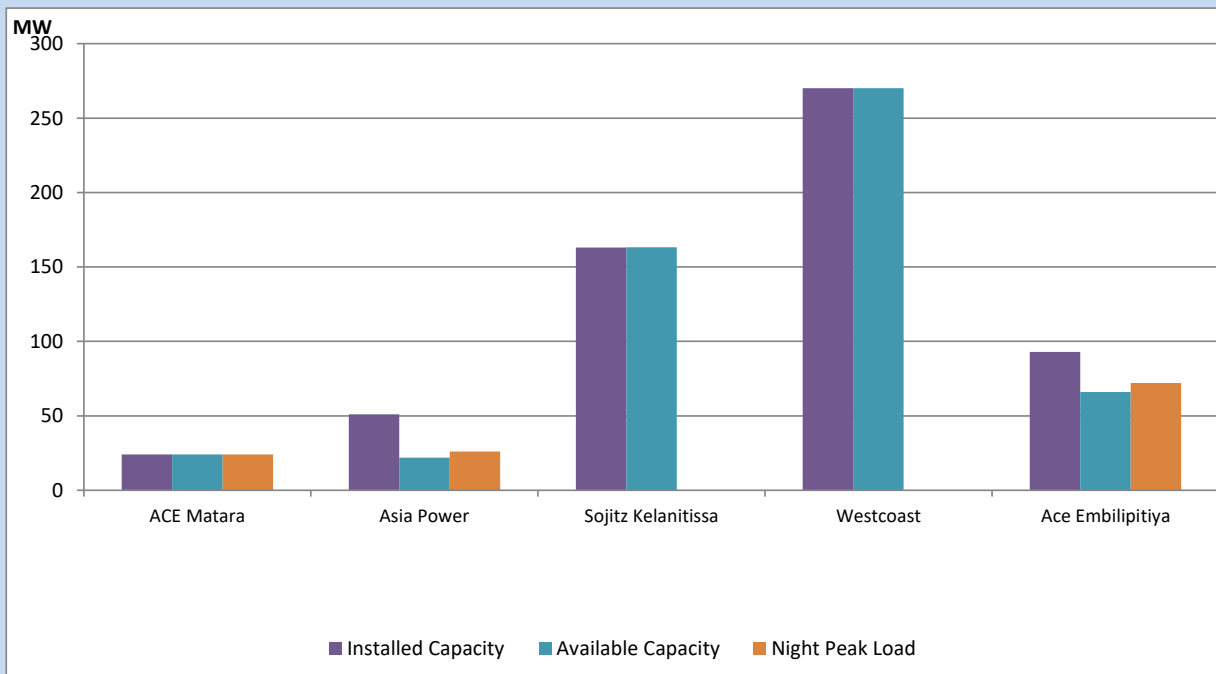
V Power Pallekale, Vpower Galle, V Power Horana, Vpower Hambantota, Vpower Valachchena and Altaqa Mahiyanganaya are not available due to expiration of PPAs



Available Generation is estimated based on plant availability at 6.00am on

April 25, 2022

IPP owned Thermal Plant Loading at the Night Peak

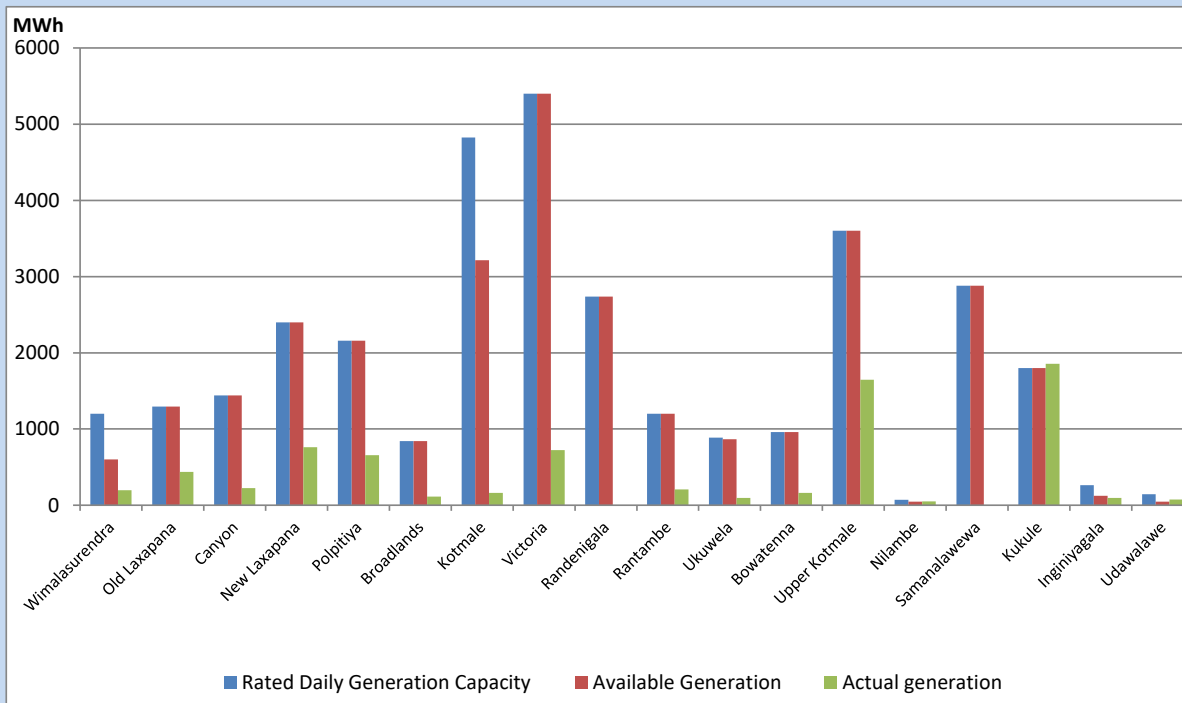


Note- Plant availability is recorded at 6.00 am on

April 25, 2022

Major Hydro Plant Dispatch

April 24, 2022

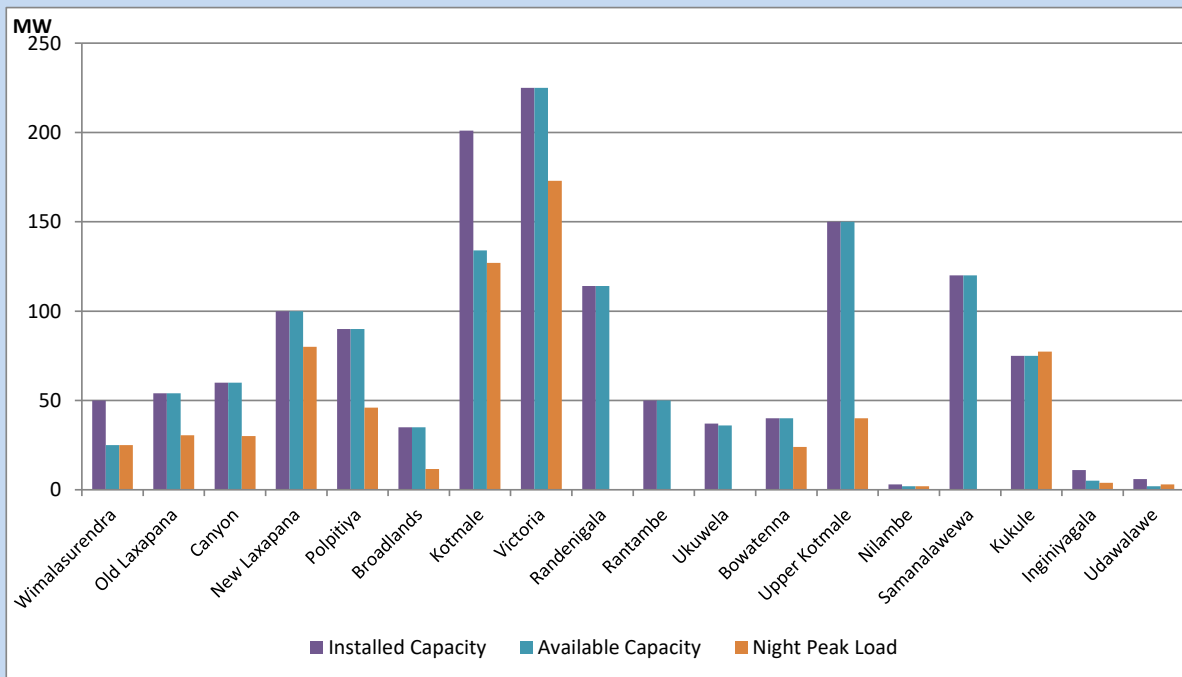


Available Generation is estimated based on plant availability at 6.00am on April 25, 2022
 Broadlands power plant is operating in the Commissioning Stage

April 25, 2022

Major Hydro Plant Loading at Night Peak

April 24, 2022



Note- Plant availability is recorded at 6.00 am on April 25, 2022
 Broadlands power plant is operating in the Commissioning Stage

Summary of Major Plant performance

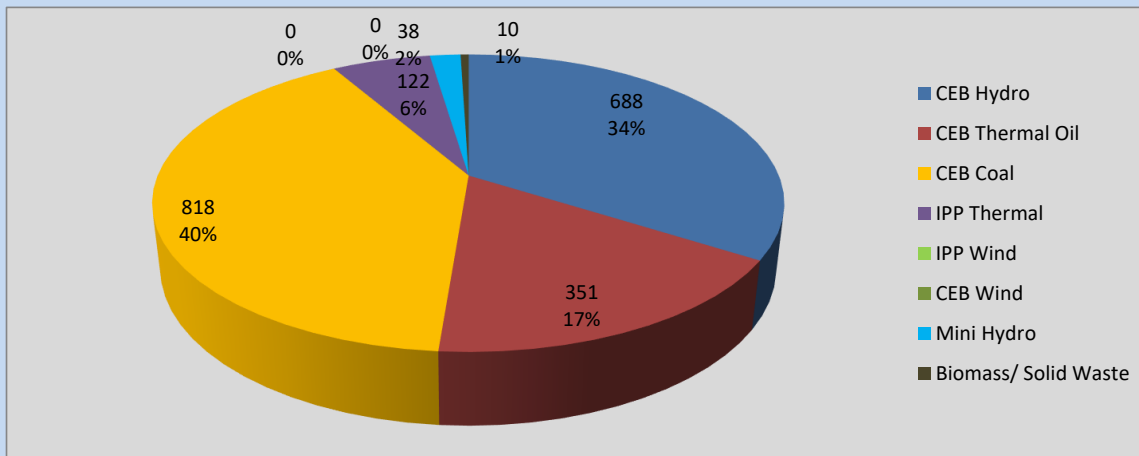
Plant	Installed Capacity	Plant Availability	Night peak Load	Plant Dispatch
	(MW)	(MW)	(MW)	(MWh)
Wimalasurendra	50	25	25	195
Old Laxapana	54	54	31	436
Canyon	60	60	30	225
New Laxapana	100	100	80	762
Polpitiya	90	90	46	656
Broadlands	35	35	12	113
Kotmale	201	134	127	160
Victoria	225	225	173	724
Randenigala	114	114	0	0
Rantambe	50	50	0	206
Ukuwela	37	36	0	95
Bowatenna	40	40	24	160
Upper Kotmale	150	150	40	1,646
Nilambe	3	2	2	49
Samanalawewa	120	120	0	0
Kukule	75	75	77	1,856
Inginiyagala	11	5	4	97
Udawalawe	6	2	3	75
Puttalam Coal I	270	270	272	6,534
Puttalam Coal II	270	270	271	6,472
Puttalam Coal III	270	270	275	6,529
KPS Small GTs	64	16	0	0
KPS GT 7	115	115	0	0
KCCP	161	152	148	3,450
Sapugaskanda A	70	49	48	946
Sapugaskanda B	70	63	63	751
Uthura Janani	26	24	23	245
Barge CEB	60	55	45	579
CEB-Thulhiriya	10	6	6	103
CEB-Kolonnawa	20	10	10	87
CEB-Mathugama	20	5	8	73
ACE Matara	24	24	24	106
Asia Power	51	22	26	649
Sojitz Kelanitissa	163	163	0	0
West Coast	270	270	0	0
ACE Embilipitiya	93	66	72	943
Total	3,448	3,167	2,012	36,702

Plant availability is the availability recorded at 6 am on

April 25, 2022

Contribution to the Night Peak in MW

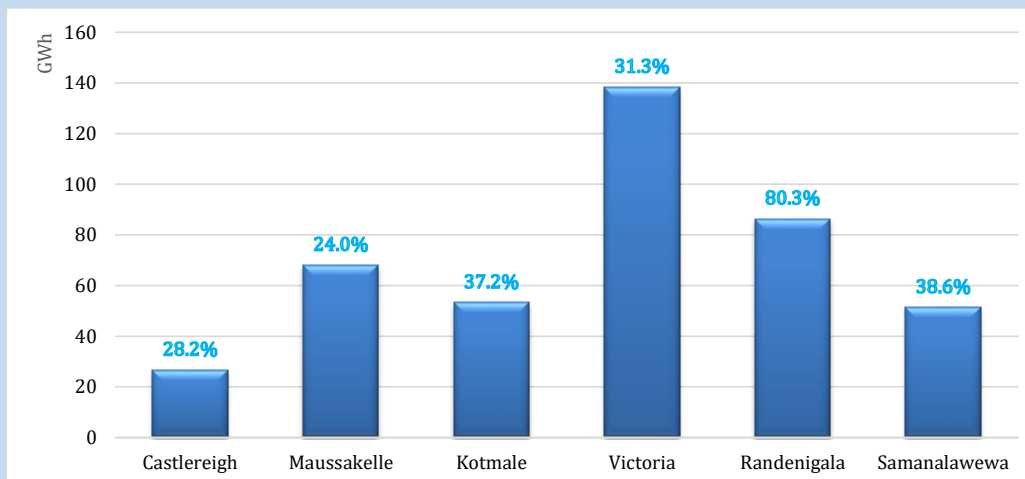
April 24, 2022



Night Peak*	2,027.4 MW
Day Peak	1,409.2 MW
Minimum Demand	1,348.1 MW

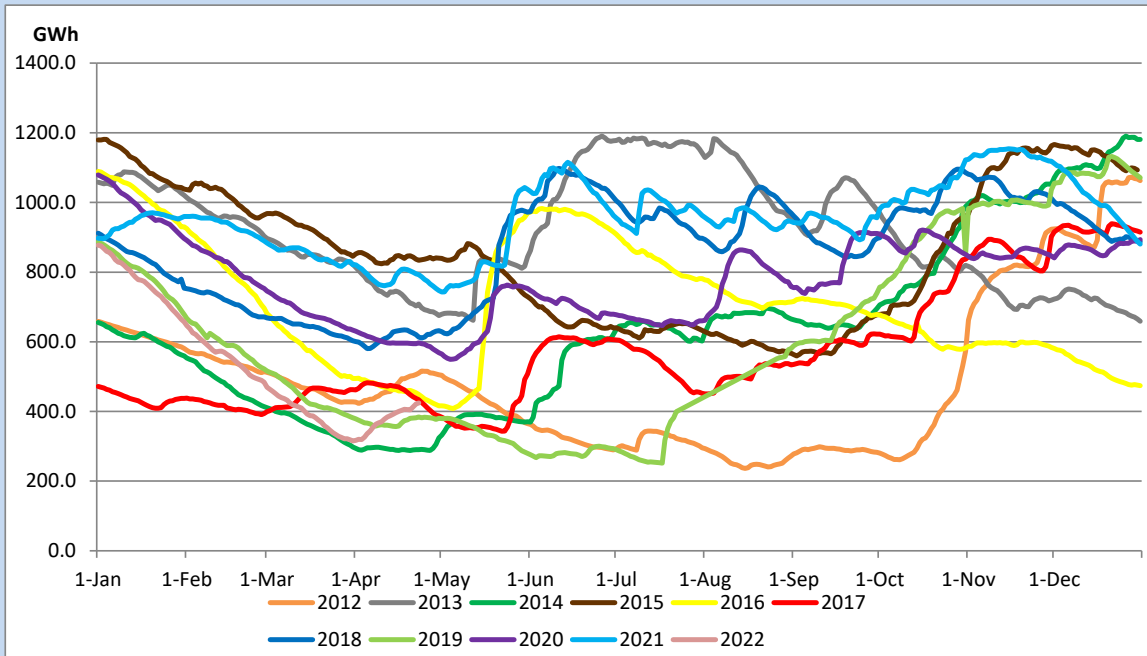
Above figures are excluding contribution from Roof Top Solar, 1MW solar, certain Wind plants and Mini Hydro plants

Reservoir Levels - as at 06.00 Hr on April 25, 2022



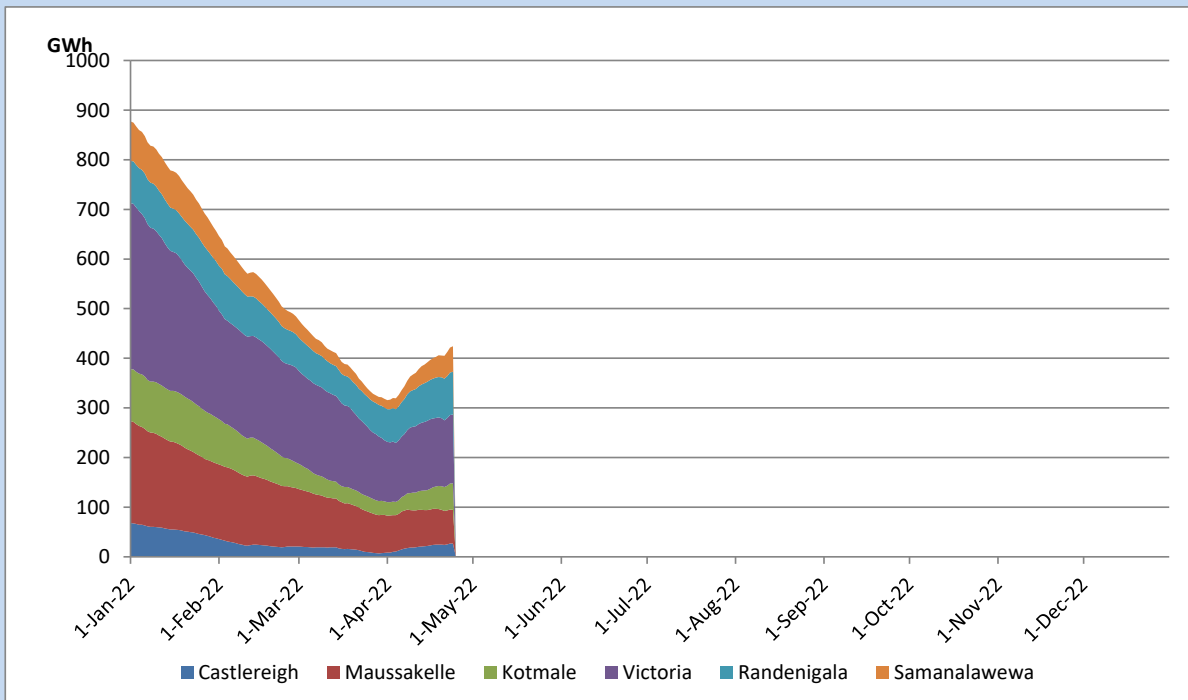
Total Reservoir Level	424.3 GWh
% of Total capacity	39.9%

Comparison of Total Reservoir Storage Levels with Past Years

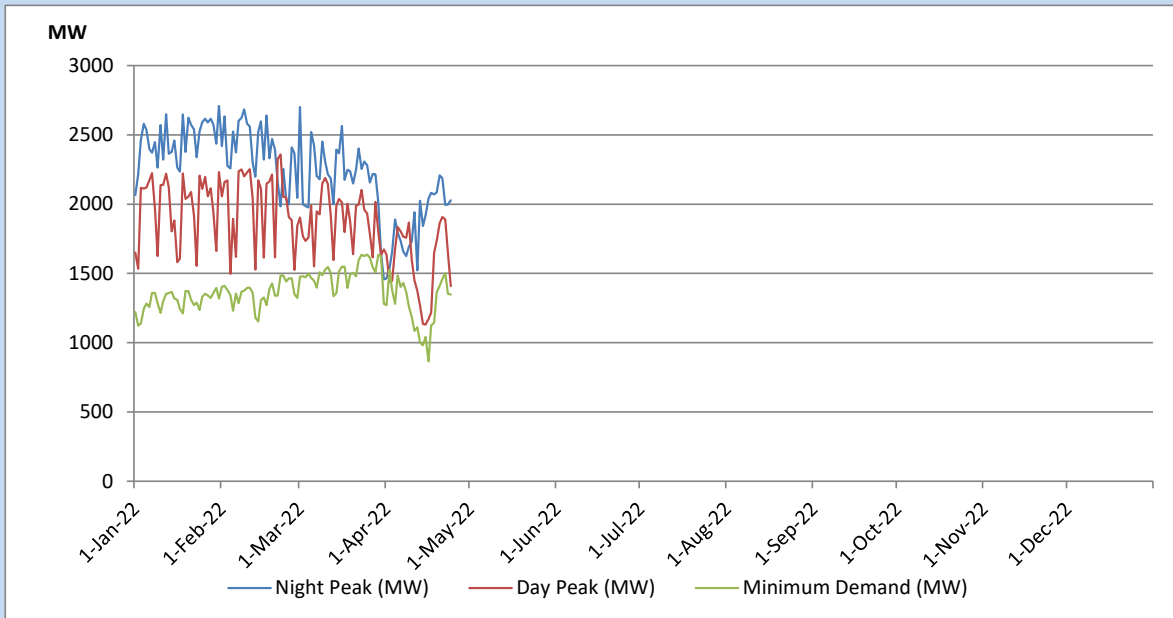


Data for 2018 and 2019 are only available for part of year.

Variation of Major Hydro Reservoir Levels in the current year (GWh)



Variation of Demand during the current year

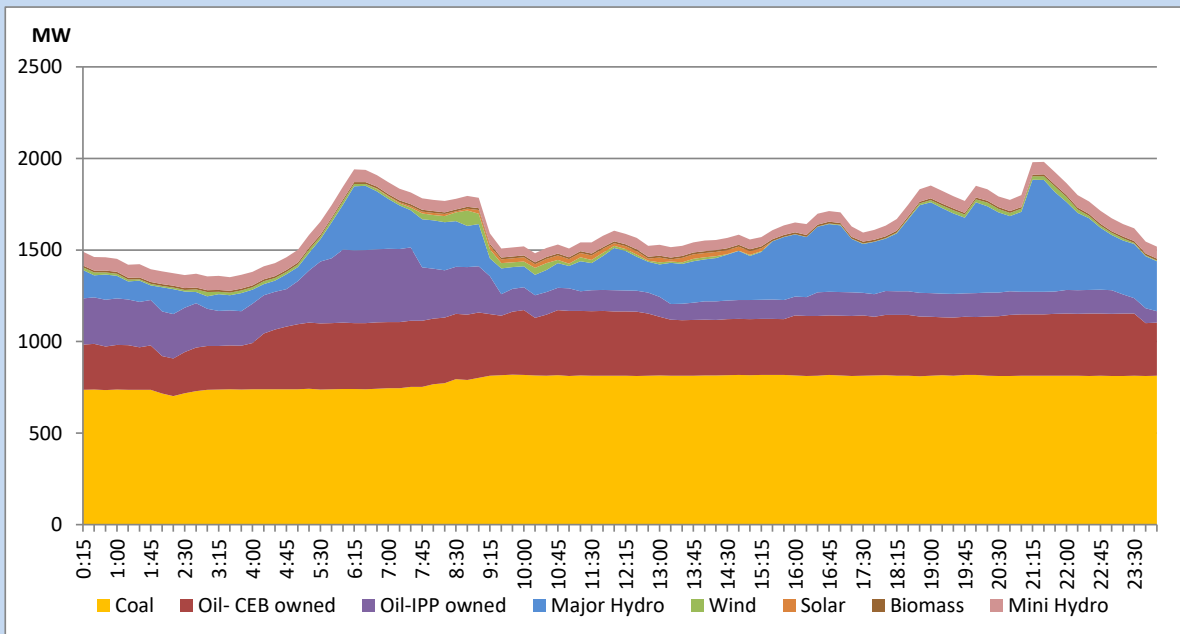


The above figures are excluding contribution from Roof Top Solar, 1MW solar, certain Wind plants and Mini Hydro plants

Daily Load Curve of the Previous day

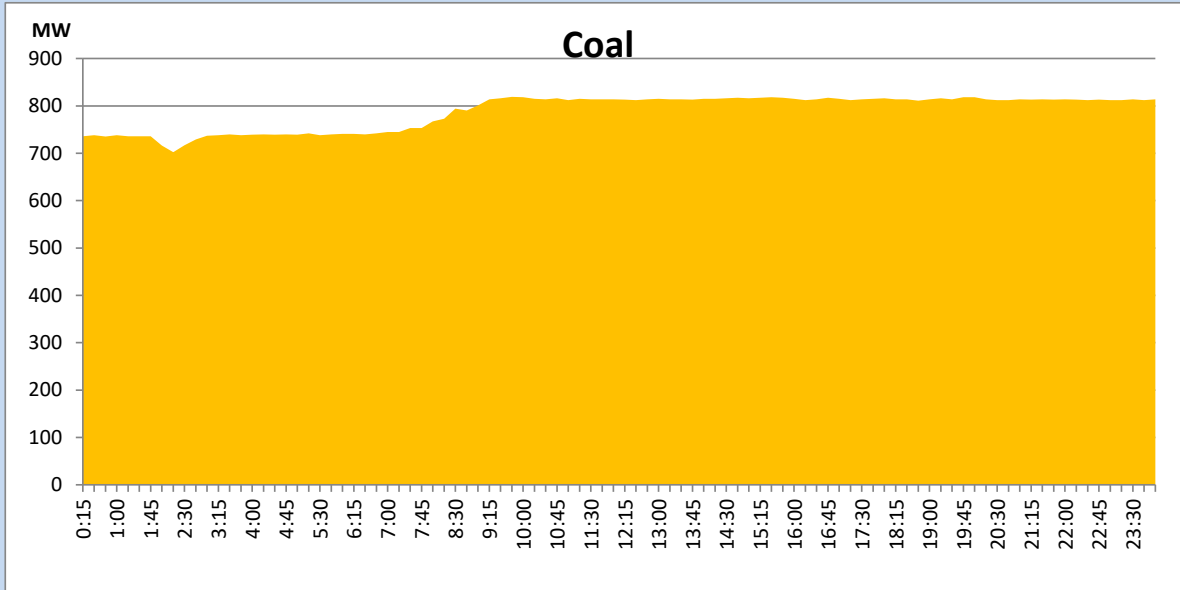
April 23, 2022

Solar and wind data is based on Telemetered Power Stations only



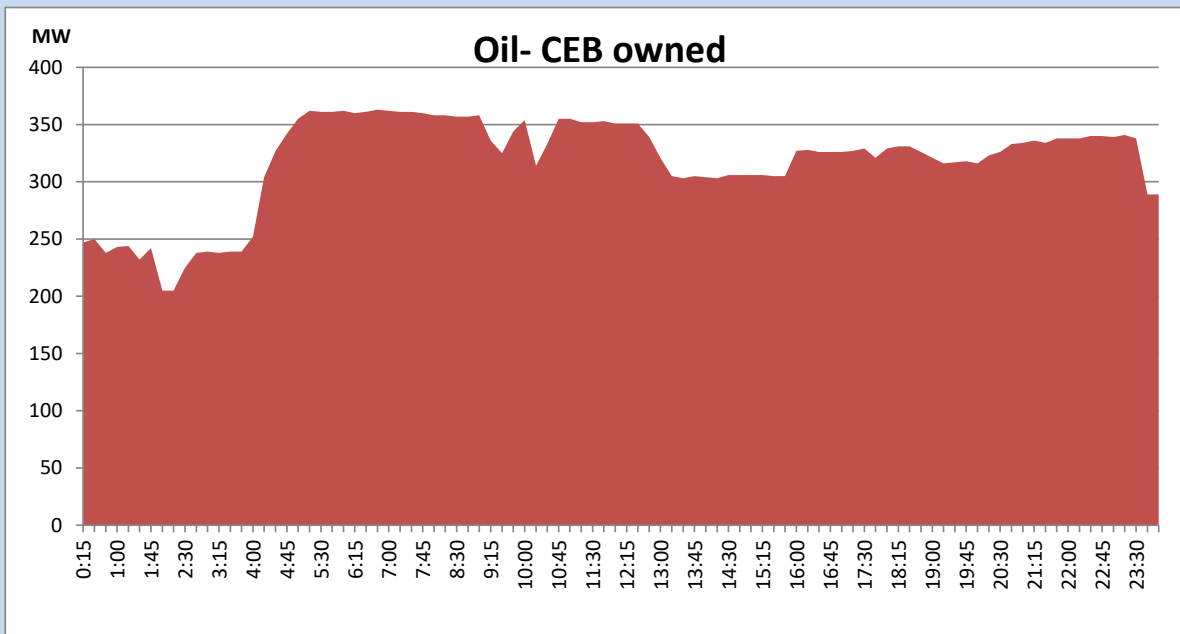
Coal Generation during the Previous day

April 23, 2022



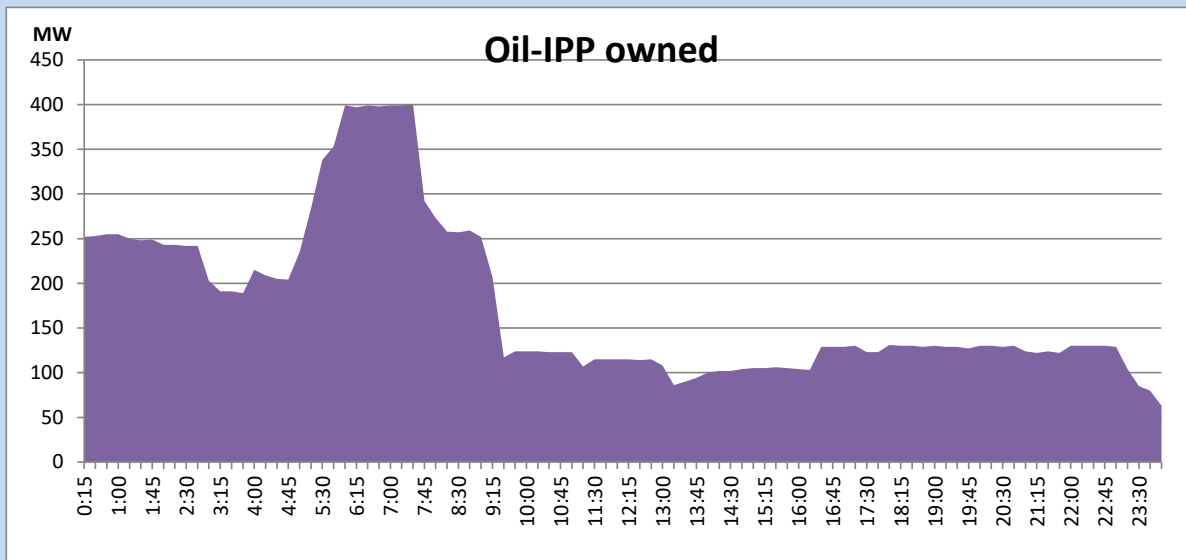
CEB Oil Plant Generation during the Previous day

April 23, 2022



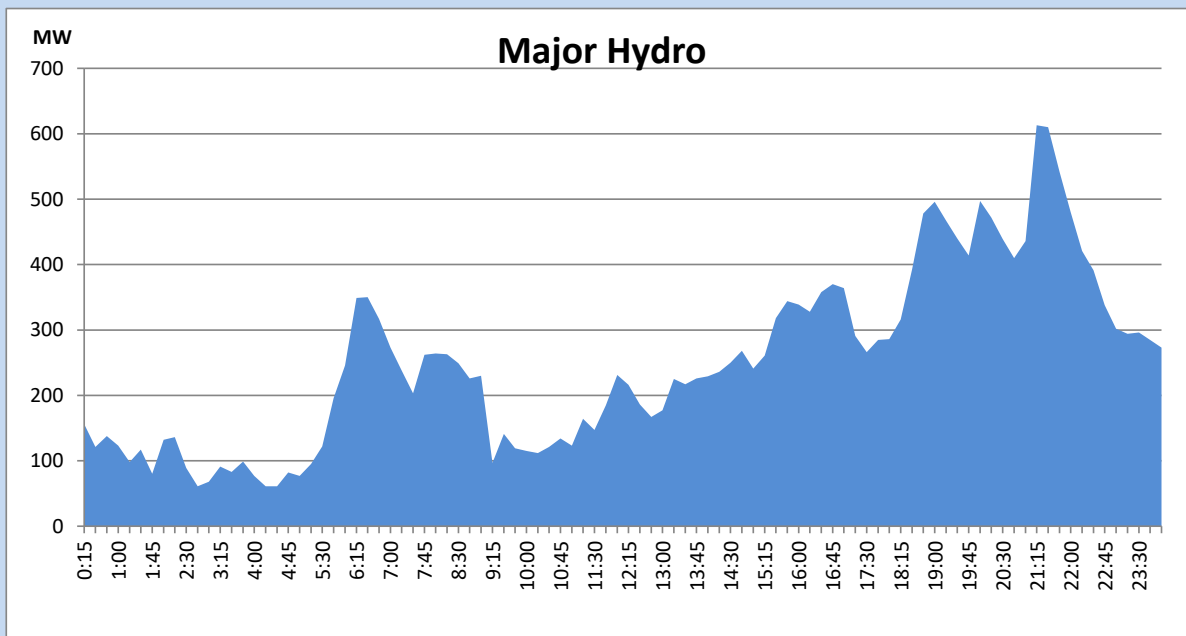
IPP Oil Plant Generation during the Previous day

April 23, 2022



Major Hydro Generation during the Previous day

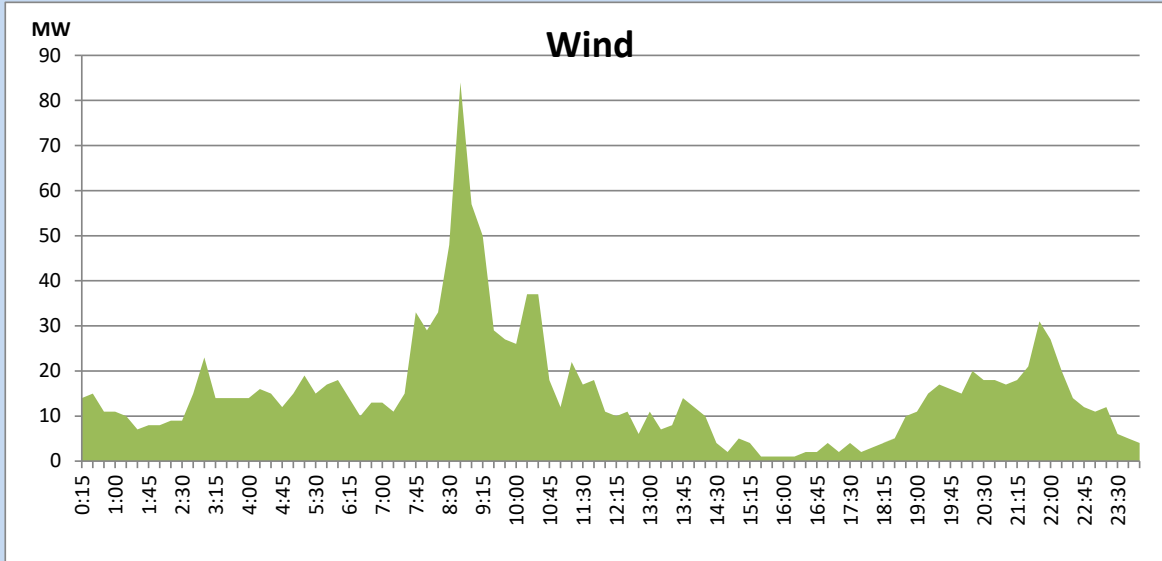
April 23, 2022



Wind Generation during the Previous day

April 23, 2022

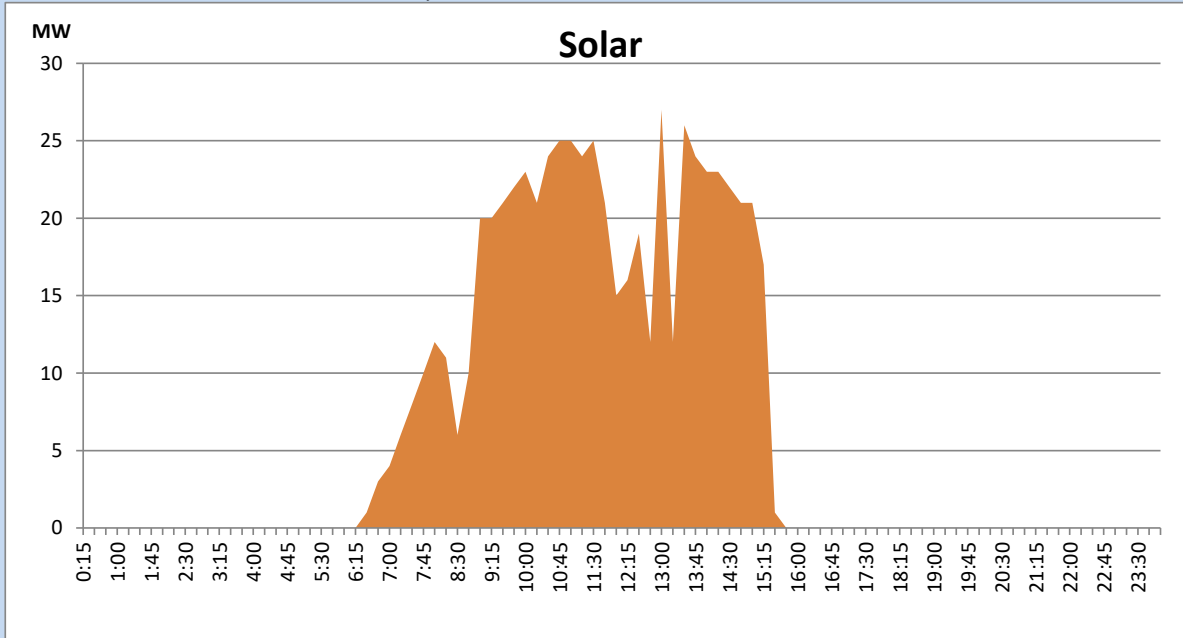
Based on Telemetered Power Stations only



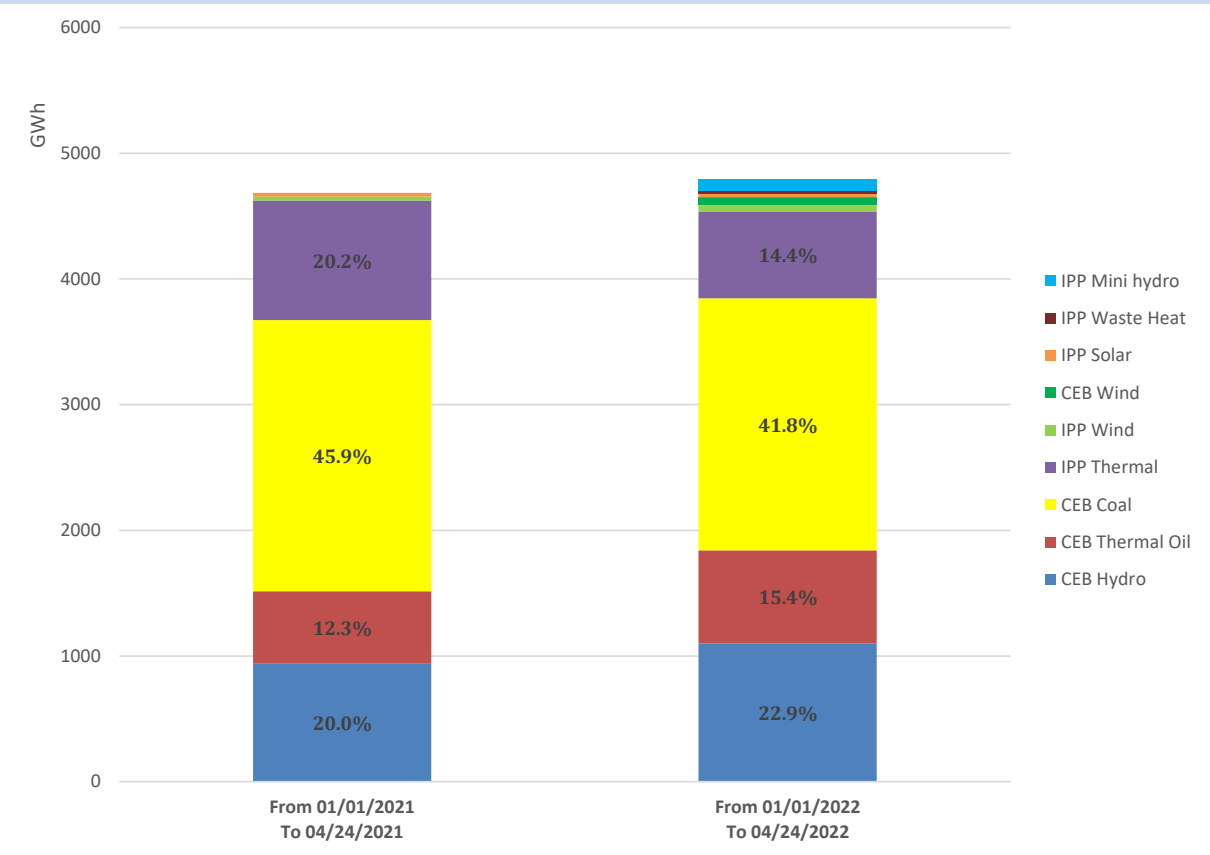
Solar Generation during the Previous day

April 23, 2022

Based on Telemetered Power Stations only



Cumulative Dispatch Comparison with Last Year



Thermal Plant Fuel types

Power Station	Primary Fuel
CEB Thermal	
Sapugaskanda 1	Heavy Fuel
Sapugaskanda 2	Heavy Fuel
Kelanitissa Small Gas Turbines	Auto Diesel
GT 7 - Kelanitissa	Auto Diesel
Kelanitissa CCY	Naphtha or Diesel
Lakvijaya 1	Coal
Lakvijaya 2	Coal
Lakvijaya 3	Coal
Uthuru Janani	Heavy Fuel
Barge CEB	Heavy Fuel

Power Station	Primary Fuel
Private Thermal	
Sojitz - Kelanitissa	Auto Diesel
West Coast	Heavy Fuel
ACE Matara	Heavy Fuel
ACE Embilipitiya	Heavy Fuel
Asia Power	Heavy Fuel

Major Incidents during the day -as reported by CEB morning of

April 25, 2022

- 1) Rotational manual load shedding was carried out from 9:00 hrs to 21:20 hrs.
- 2) New Habarana- Valachchenai cct tripped and A/R from New Habarana end at 09:00hrs due to the operation of differential protection.
- 3) New Galle -Ambalan cct 02 tripped from New Galle end , tripped and A/R from Ambalan end at 23:11hrs due to the operation of differential protection. At the same time New Galle -Ambalan cct 01 tripped and A/R from both ends. New Galle -Ambalan cct 02 restored at 23:20hrs
- 4) LVPS -New Anu cct 02 tripped and A/R at 03:32hrs on 25.04.2022 from both ends due to the operation of distance protection.