

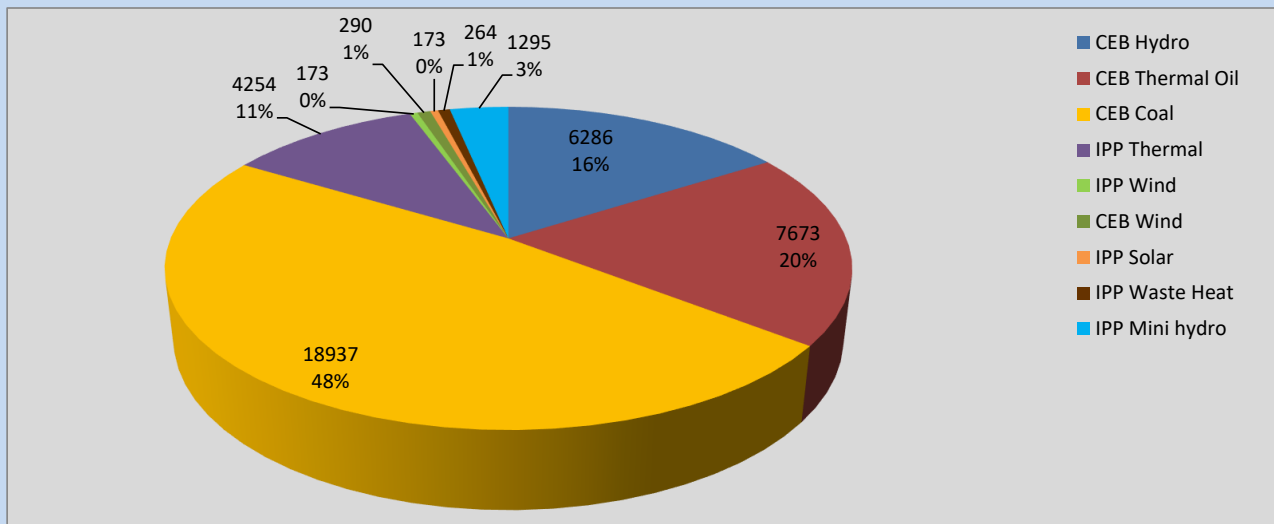
Generation and Reservoirs Statistics

April 23, 2022



PUBLIC UTILITIES COMMISSION OF SRI LANKA

Daily Generation Mix in MWh



Total Generation **39,443 MWh**

Note: Above data is excluding contribution from Roof Top Solar, 1MW Solar and certain Mini Hydro plants

Cumulative Dispatch

Note: Following data is Excluding contribution from Roof Top Solar, 1MW solar and Mini Hydro plants

For Current Month

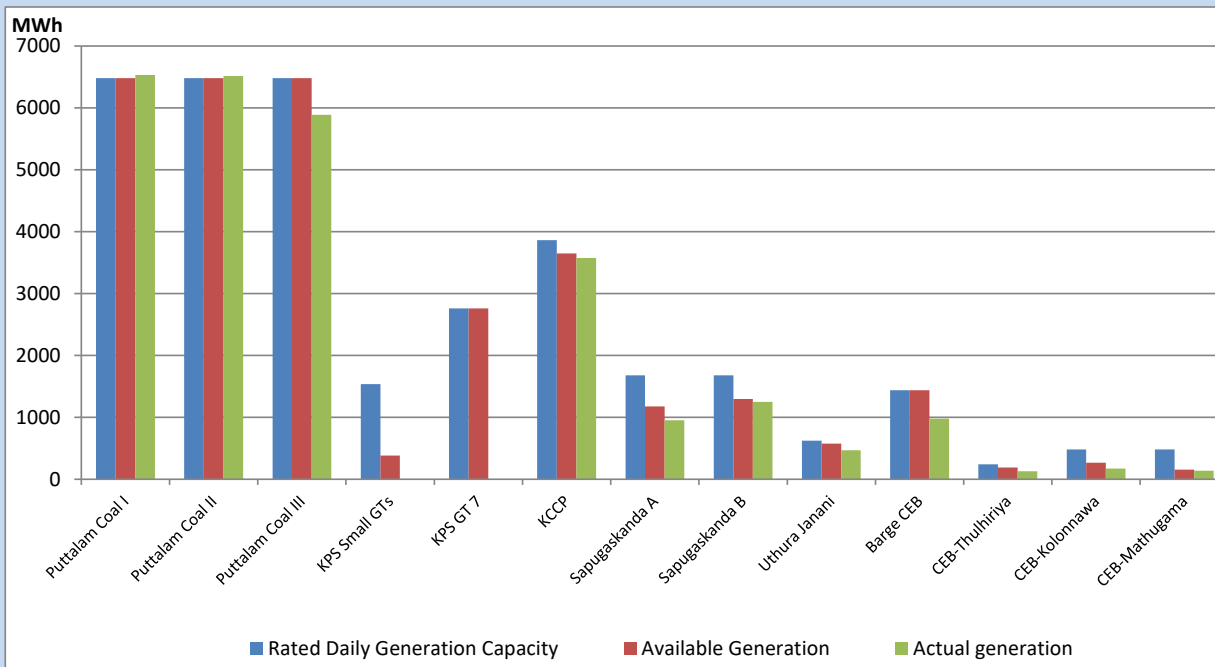
Category	Dispatch (GWh)	Percentage
CEB Hydro	162.91	19.34%
CEB Thermal Oil	91.83	10.90%
CEB Coal	435.55	51.71%
IPP Thermal	97.62	11.59%
SPP Wind	6.86	0.81%
CEB Wind	8.80	1.04%
SPP Solar	5.72	0.68%
SPP Solid Waste	4.83	0.57%
Mini Hydro	28.20	3.35%
Total	842.32	

For Current Year

Category	Dispatch (GWh)	Percentage
CEB Hydro	1,092.8	22.96%
CEB Thermal Oil	733.0	15.40%
CEB Coal	1,986.0	41.72%
IPP Thermal	690.5	14.51%
SPP Wind	49.3	1.03%
CEB Wind	62.6	1.31%
SPP Solar	29.3	0.62%
SPP Solid Waste	22.6	0.47%
Mini Hydro	94.6	1.99%
Total	4,760.4	

CEB owned Thermal Plant Dispatch

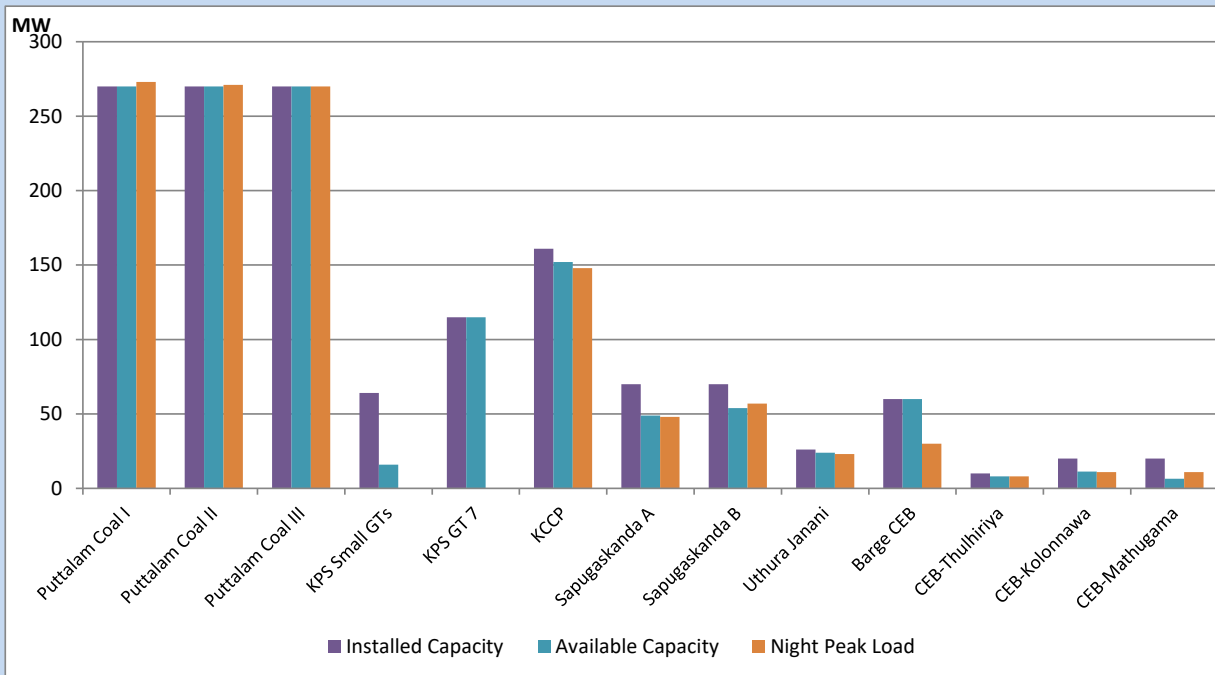
April 23, 2022



Available Generation is estimated based on plant availability at 6.00am on

April 24, 2022

CEB owned Thermal Plant Loading at the Night Peak



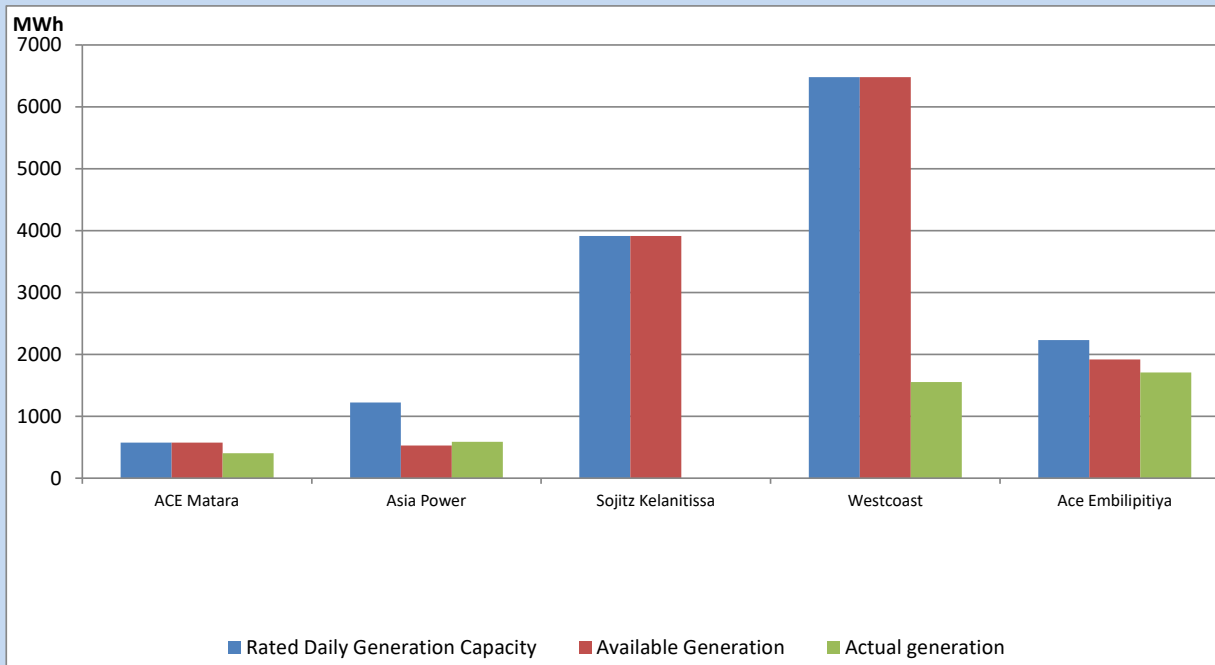
Note- Plant availability is recorded at 6.00 am on

April 24, 2022

IPP owned Thermal Plant Dispatch

April 23, 2022

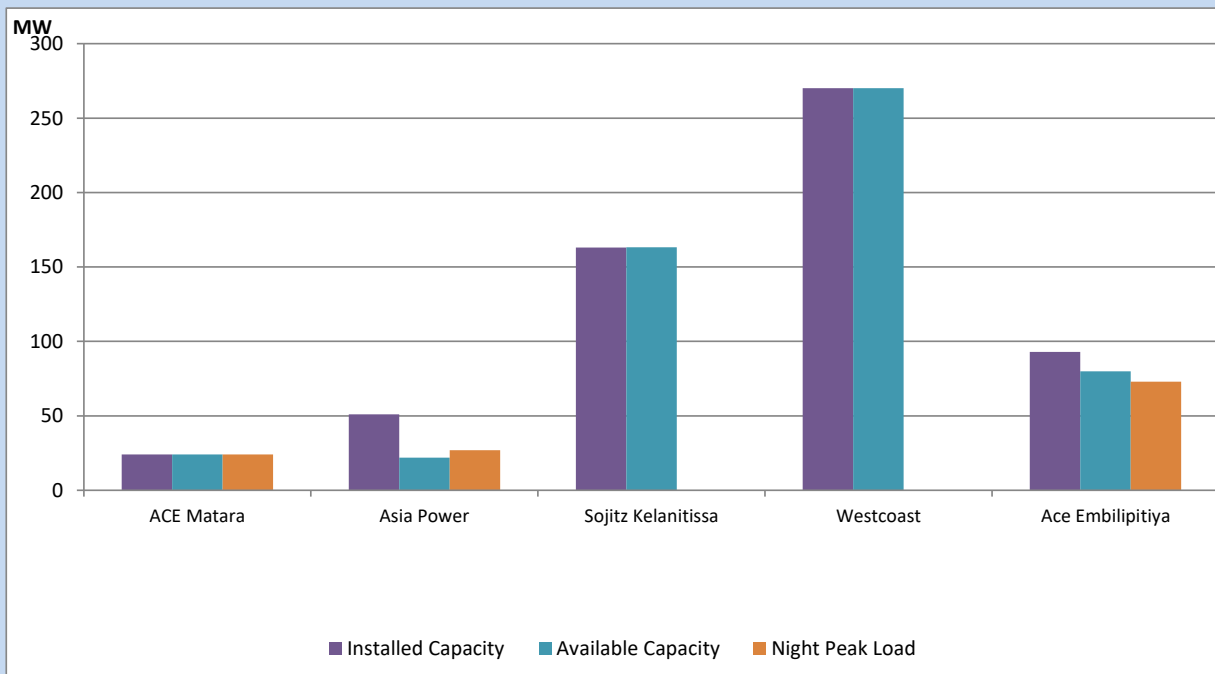
V Power Pallekale, Vpower Galle, V Power Horana, Vpower Hambantota, Vpower Valachchena and Altaqa Mahiyanganaya are not available due to expiration of PPAs



Available Generation is estimated based on plant availability at 6.00am on

April 24, 2022

IPP owned Thermal Plant Loading at the Night Peak

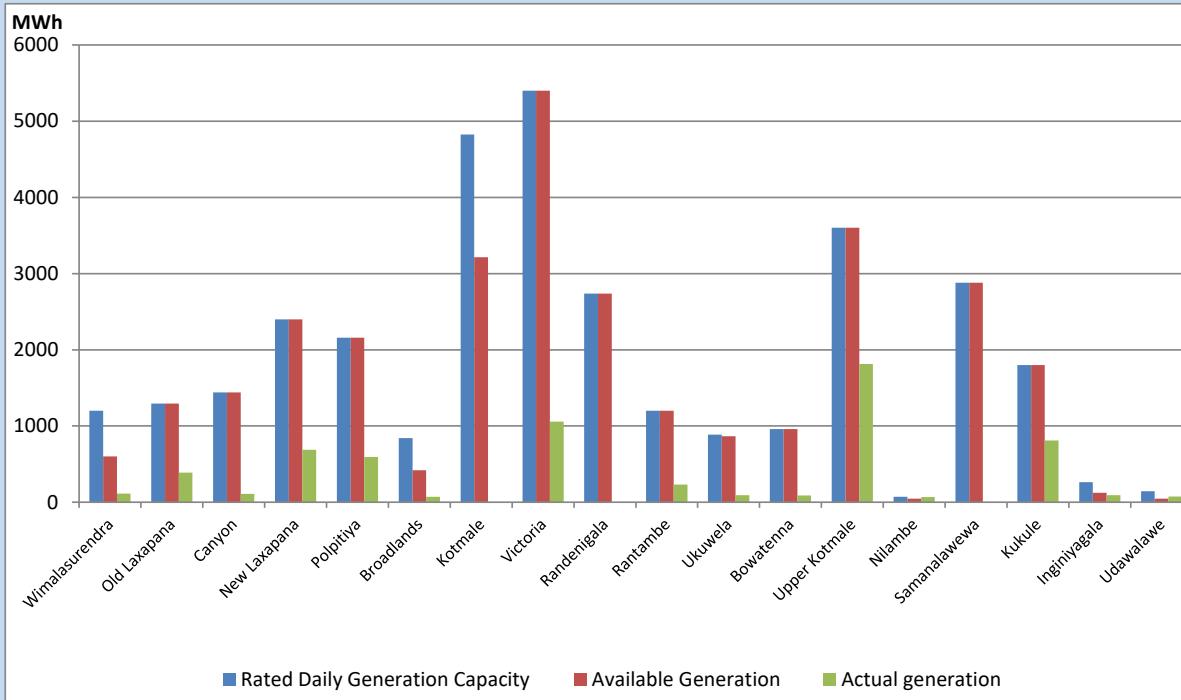


Note- Plant availability is recorded at 6.00 am on

April 24, 2022

Major Hydro Plant Dispatch

April 23, 2022

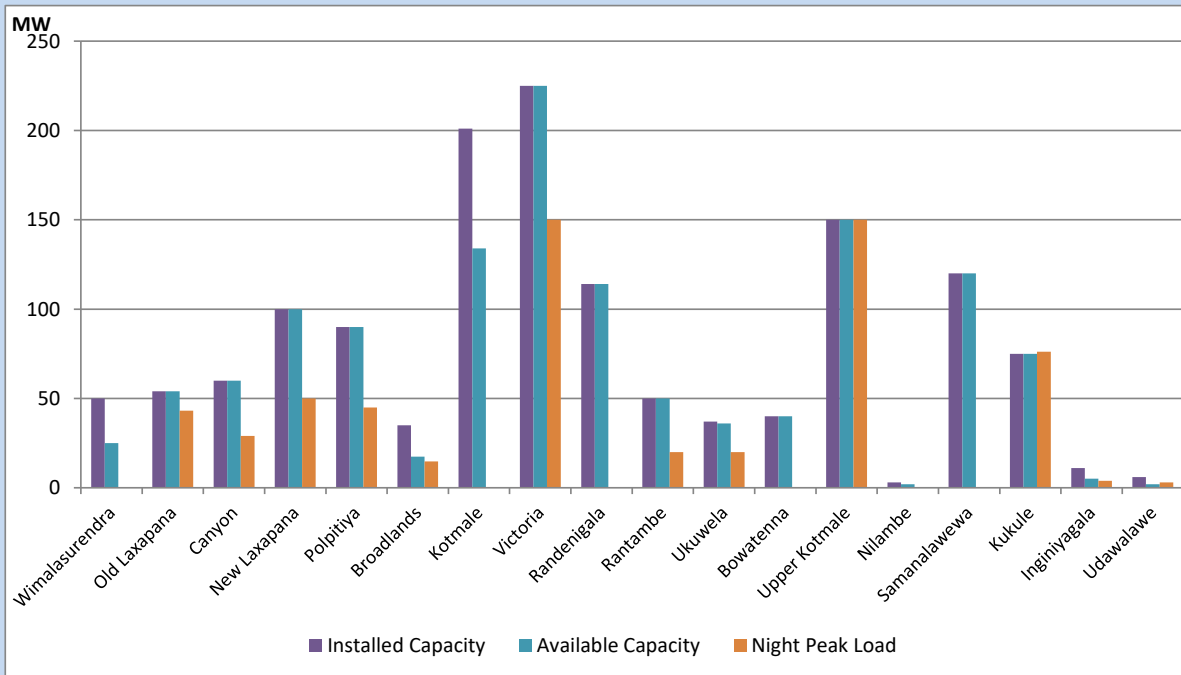


Available Generation is estimated based on plant availability at 6.00am on April 24, 2022
 Broadlands power plant is operating in the Commissioning Stage

April 24, 2022

Major Hydro Plant Loading at Night Peak

April 23, 2022



Note- Plant availability is recorded at 6.00 am on April 24, 2022
 Broadlands power plant is operating in the Commissioning Stage

Summary of Major Plant performance

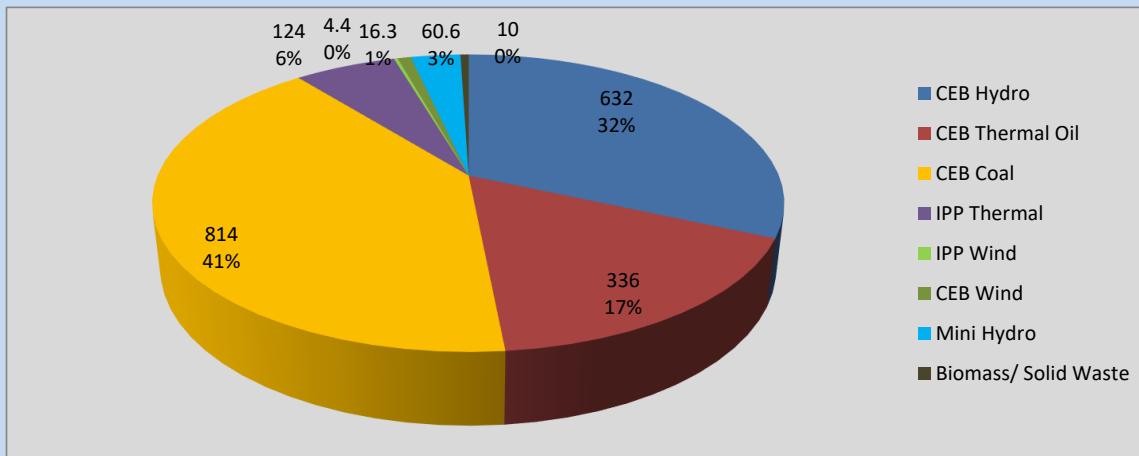
Plant	Installed Capacity	Plant Availability	Night peak Load	Plant Dispatch
	(MW)	(MW)	(MW)	(MWh)
Wimalasurendra	50	25	0	112
Old Laxapana	54	54	43	388
Canyon	60	60	29	110
New Laxapana	100	100	50	688
Polpitiya	90	90	45	593
Broadlands	35	18	15	71
Kotmale	201	134	0	0
Victoria	225	225	150	1,057
Randenigala	114	114	0	0
Rantambe	50	50	20	233
Ukuwela	37	36	20	92
Bowatenna	40	40	0	87
Upper Kotmale	150	150	150	1,813
Nilambe	3	2	0	68
Samanalawewa	120	120	0	0
Kukule	75	75	76	810
Inginiyagala	11	5	4	91
Udawalawe	6	2	3	73
Puttalam Coal I	270	270	273	6,532
Puttalam Coal II	270	270	271	6,515
Puttalam Coal III	270	270	270	5,890
KPS Small GTs	64	16	0	0
KPS GT 7	115	115	0	0
KCCP	161	152	148	3,576
Sapugaskanda A	70	49	48	955
Sapugaskanda B	70	54	57	1,251
Uthura Janani	26	24	23	467
Barge CEB	60	60	30	979
CEB-Thulhiriya	10	8	8	132
CEB-Kolonnawa	20	11	11	174
CEB-Mathugama	20	6	11	139
ACE Matara	24	24	24	404
Asia Power	51	22	27	590
Sojitz Kelanitissa	163	163	0	0
West Coast	270	270	0	1,552
ACE Embilipitiya	93	80	73	1,708
Total	3,448	3,164	1,970	39,443

Plant availability is the availability recorded at 6 am on

April 24, 2022

Contribution to the Night Peak in MW

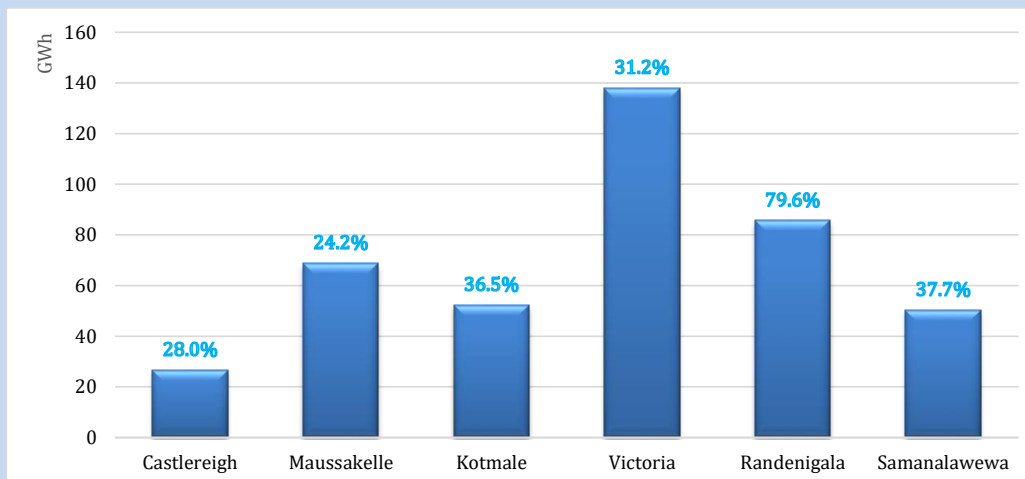
April 23, 2022



Night Peak*	1,997.2 MW
Day Peak	1,647.9 MW
Minimum Demand	1,353.1 MW

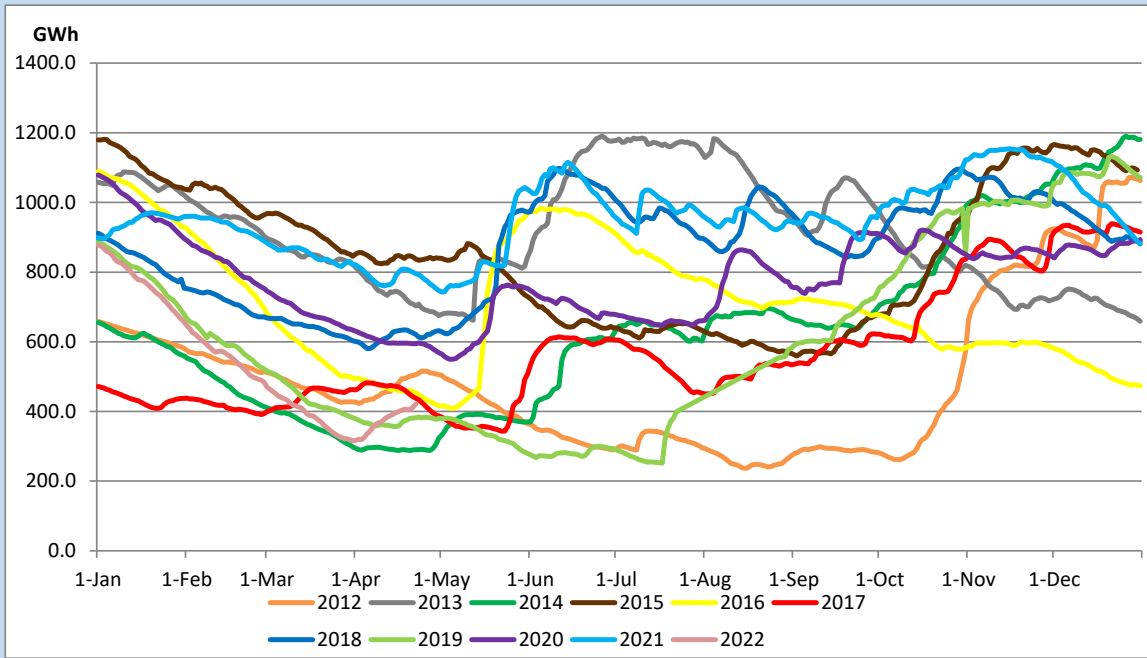
Above figures are excluding contribution from Roof Top Solar, 1MW solar, certain Wind plants and Mini Hydro plants

Reservoir Levels - as at 06.00 Hr on April 24, 2022



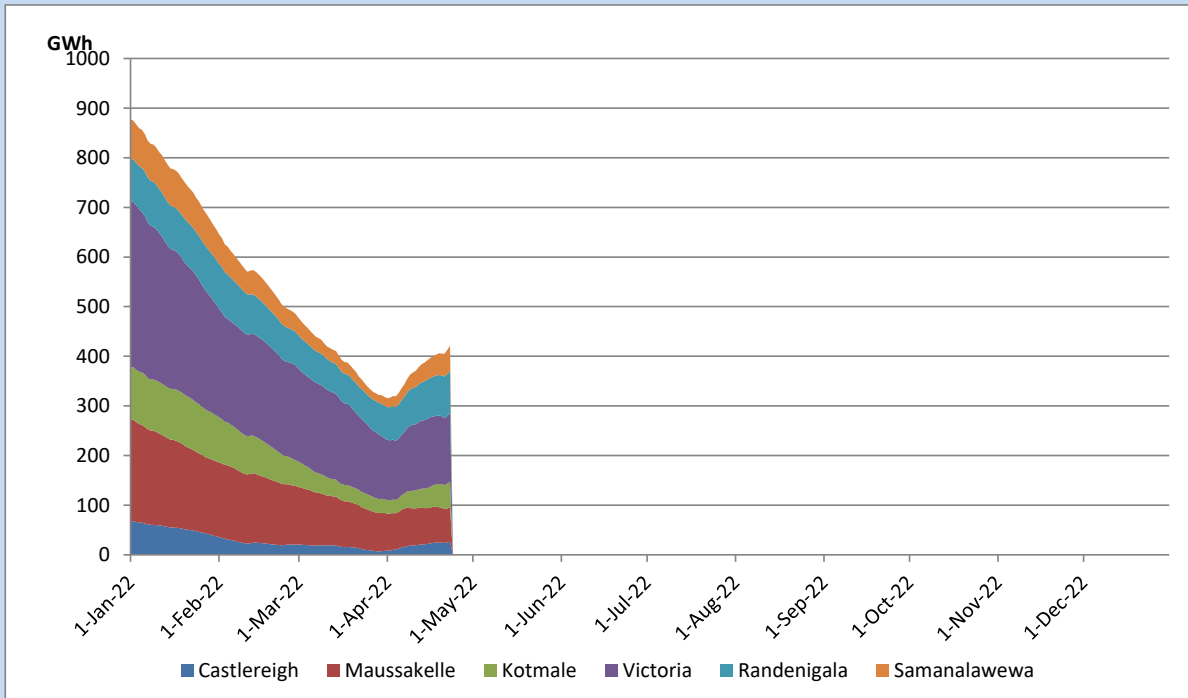
Total Reservoir Level	421.6 GWh
% of Total capacity	39.5%

Comparison of Total Reservoir Storage Levels with Past Years

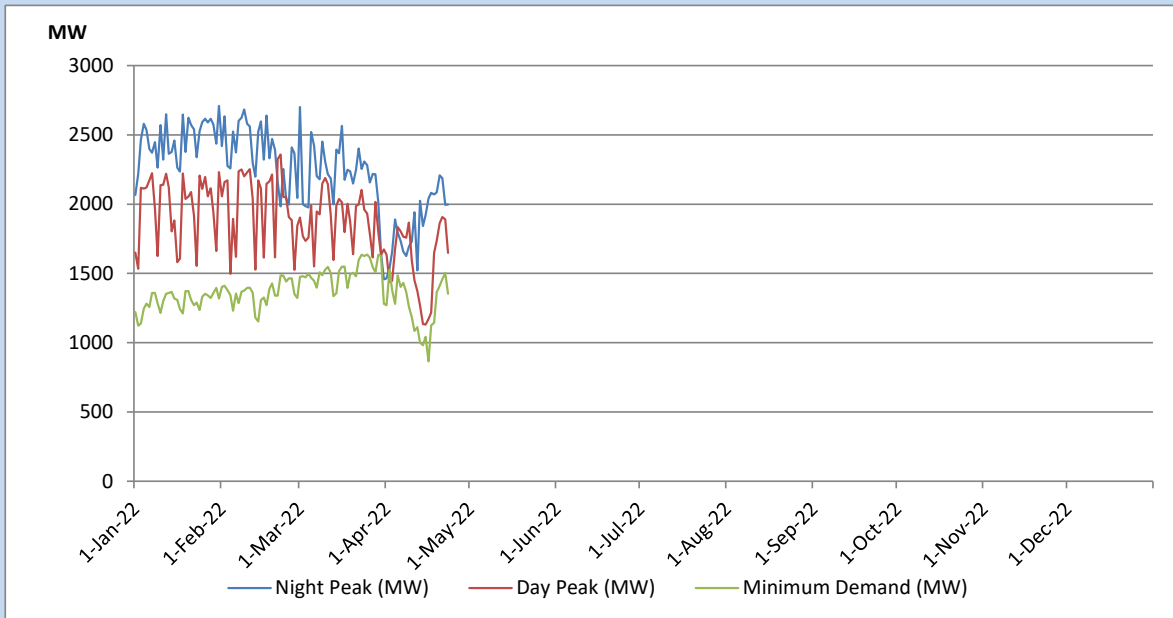


Data for 2018 and 2019 are only available for part of year.

Variation of Major Hydro Reservoir Levels in the current year (GWh)



Variation of Demand during the current year

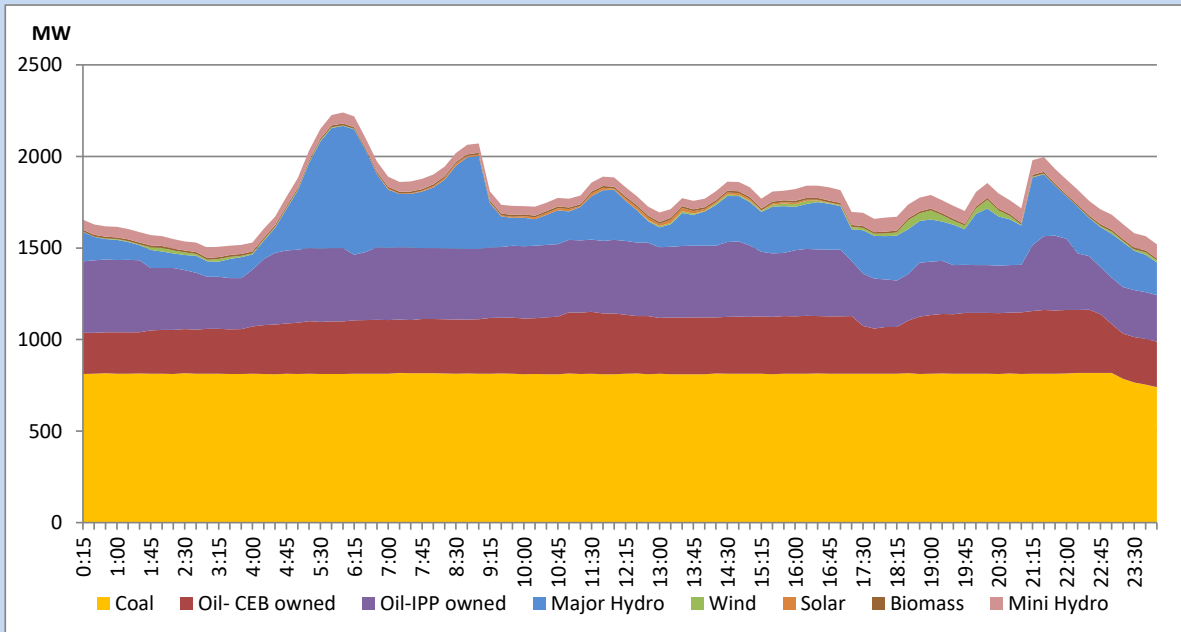


The above figures are excluding contribution from Roof Top Solar, 1MW solar, certain Wind plants and Mini Hydro plants

Daily Load Curve of the Previous day

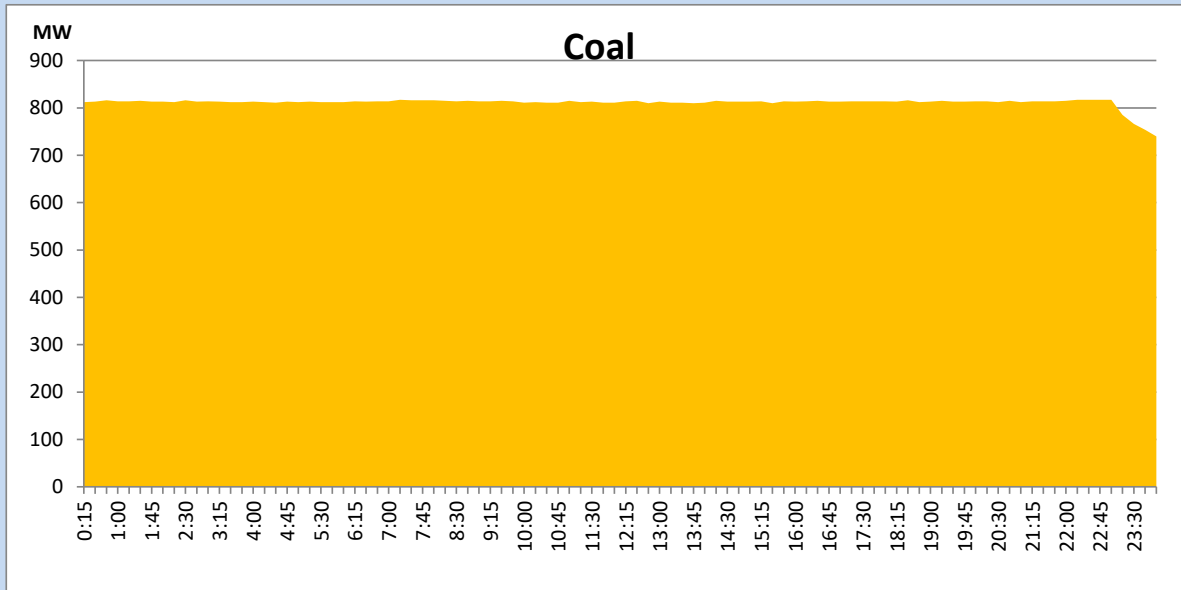
April 22, 2022

Solar and wind data is based on Telemetered Power Stations only



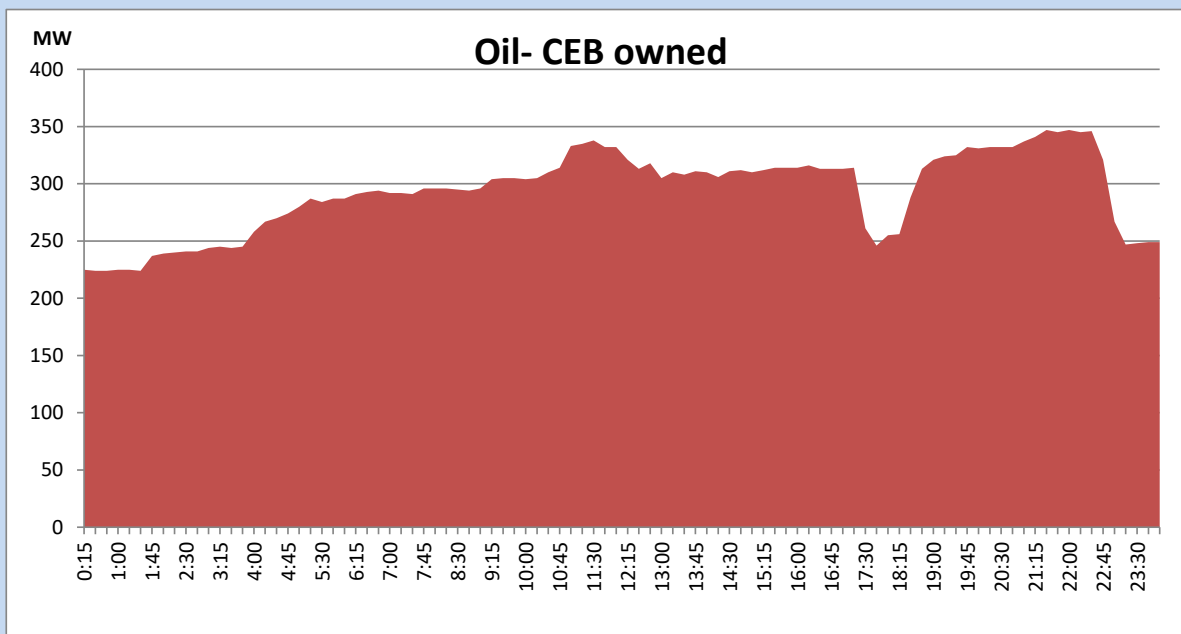
Coal Generation during the Previous day

April 22, 2022



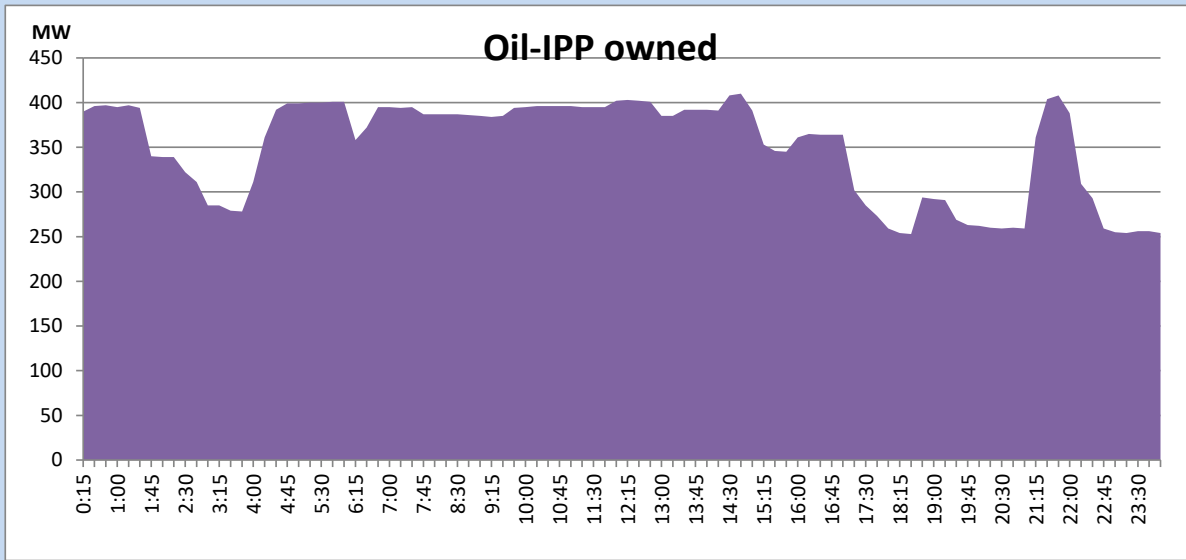
CEB Oil Plant Generation during the Previous day

April 22, 2022



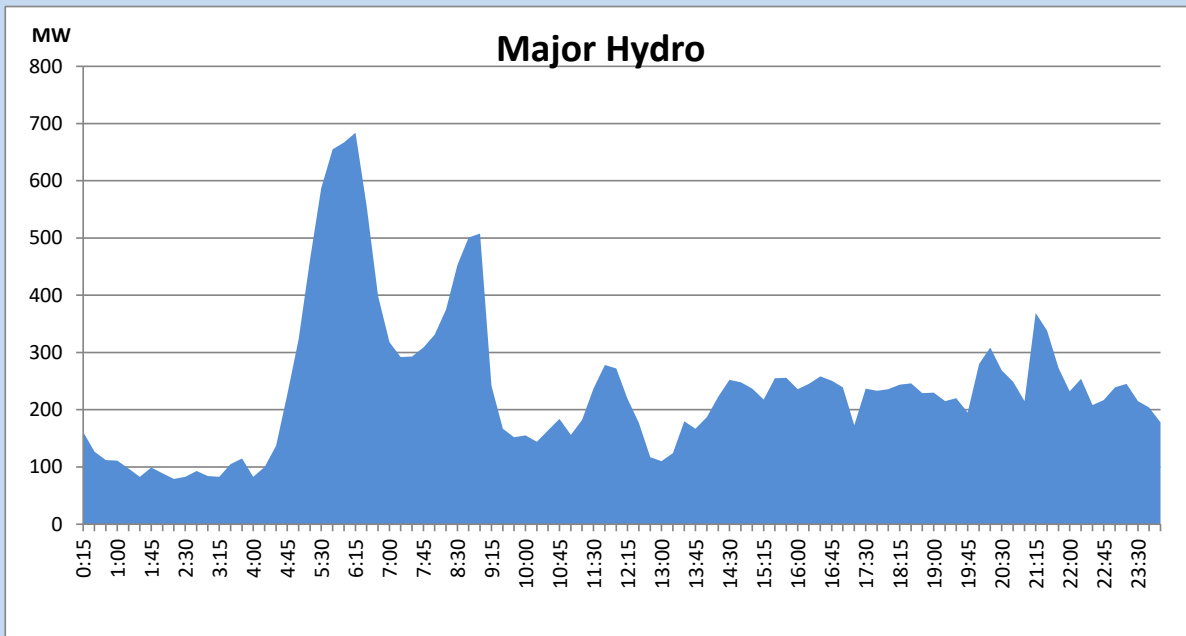
IPP Oil Plant Generation during the Previous day

April 22, 2022



Major Hydro Generation during the Previous day

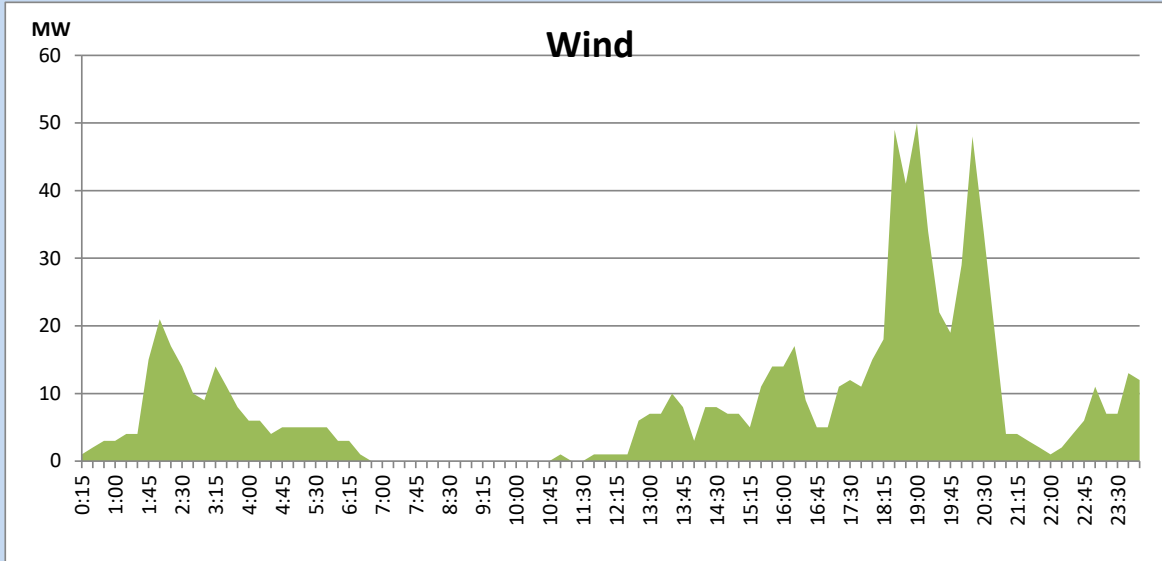
April 22, 2022



Wind Generation during the Previous day

April 22, 2022

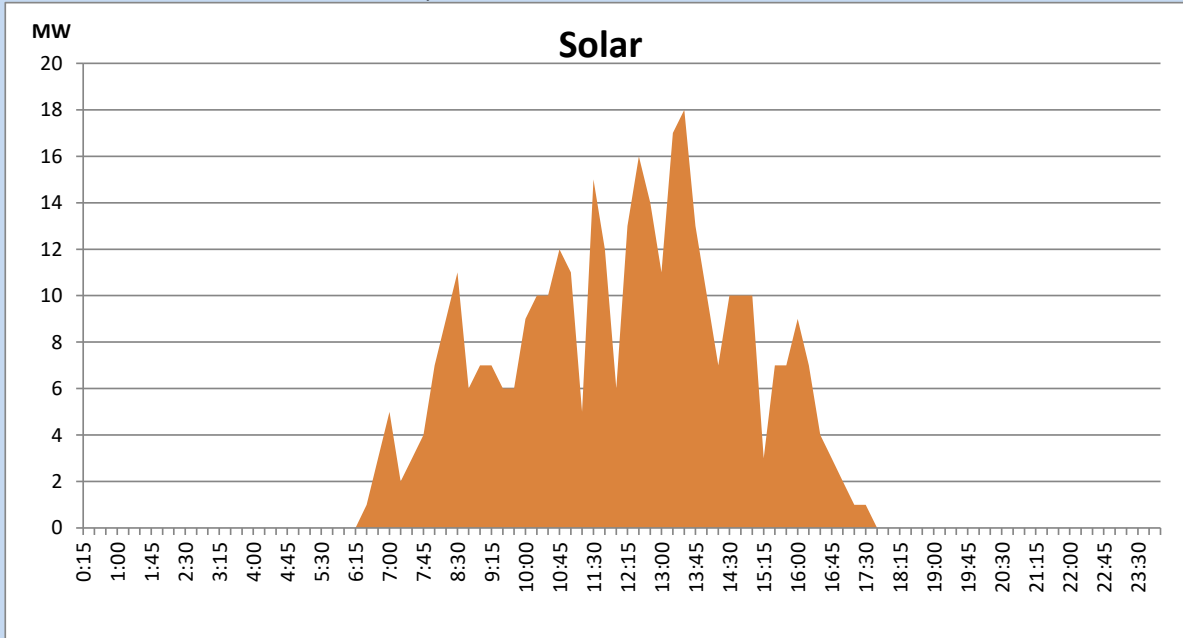
Based on Telemetered Power Stations only



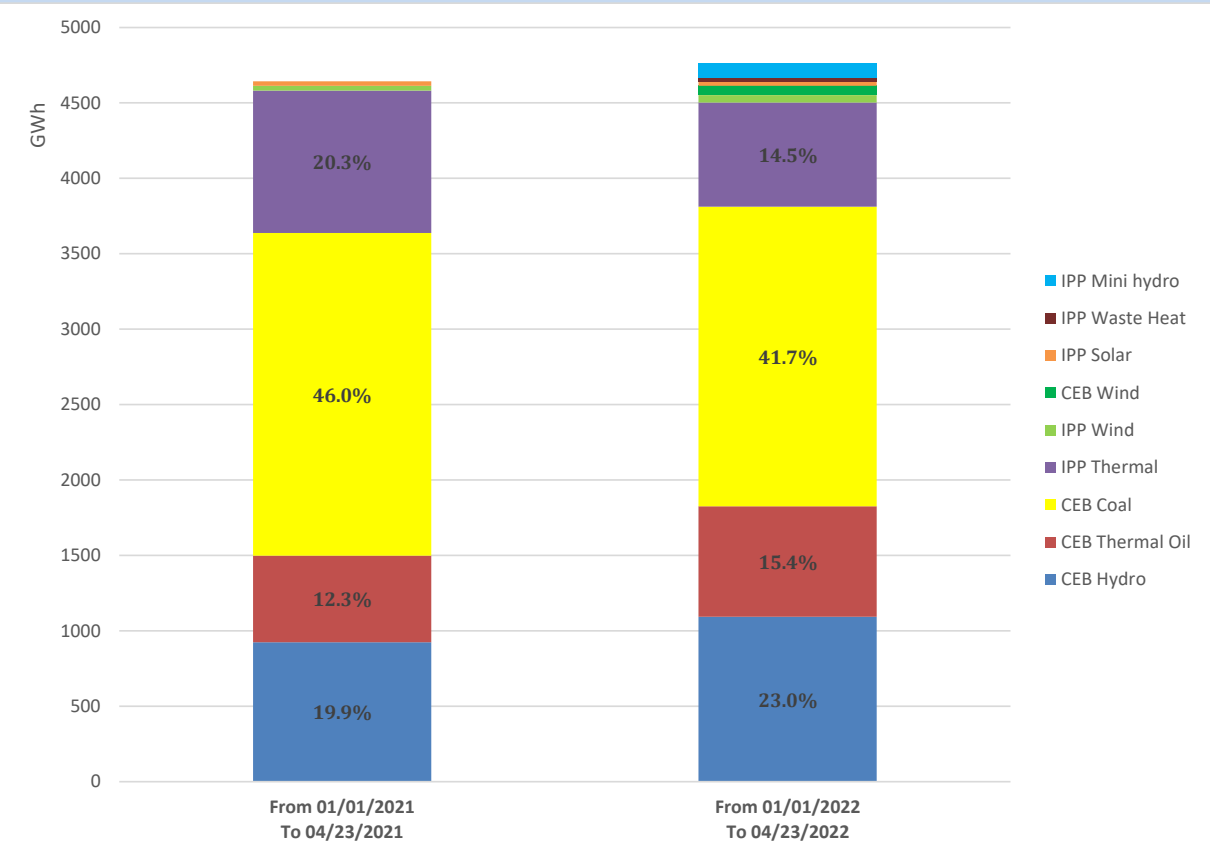
Solar Generation during the Previous day

April 22, 2022

Based on Telemetered Power Stations only



Cumulative Dispatch Comparison with Last Year



Thermal Plant Fuel types

Power Station	Primary Fuel
CEB Thermal	
Sapugaskanda 1	Heavy Fuel
Sapugaskanda 2	Heavy Fuel
Kelanitissa Small Gas Turbines	Auto Diesel
GT 7 - Kelanitissa	Auto Diesel
Kelanitissa CCY	Naphtha & Diesel
Lakvijaya 1	Coal
Lakvijaya 2	Coal
Lakvijaya 3	Coal
Uthuru Janani	Heavy Fuel
Barge CEB	Heavy Fuel

Power Station	Primary Fuel
Private Thermal	
Sojitz - Kelanitissa	Auto Diesel
West Coast	Heavy Fuel

Major Incidents during the day -as reported by CEB morning of

April 24, 2022

- 1) Rotational manual load shedding was carried out from 9:00 hrs to 21:00 hrs.