

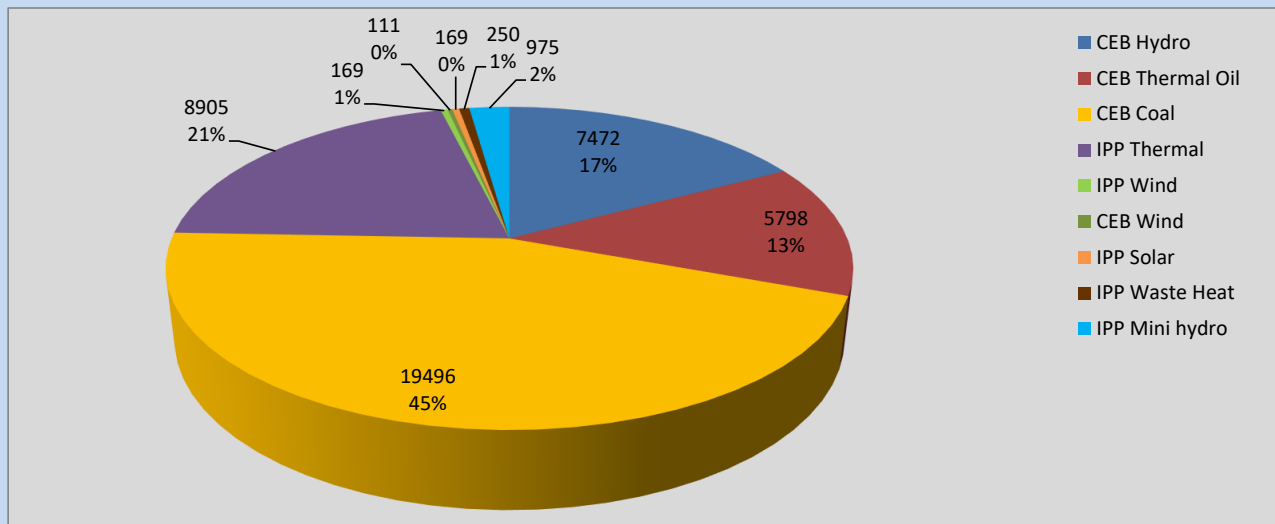
Generation and Reservoirs Statistics

April 21, 2022



PUBLIC UTILITIES COMMISSION OF SRI LANKA

Daily Generation Mix in MWh



Total Generation **43,464 MWh**

Note: Above data is excluding contribution from Roof Top Solar, 1MW Solar and certain Mini Hydro plants

Cumulative Dispatch

Note: Following data is Excluding contribution from Roof Top Solar, 1MW solar and Mini Hydro plants

For Current Month

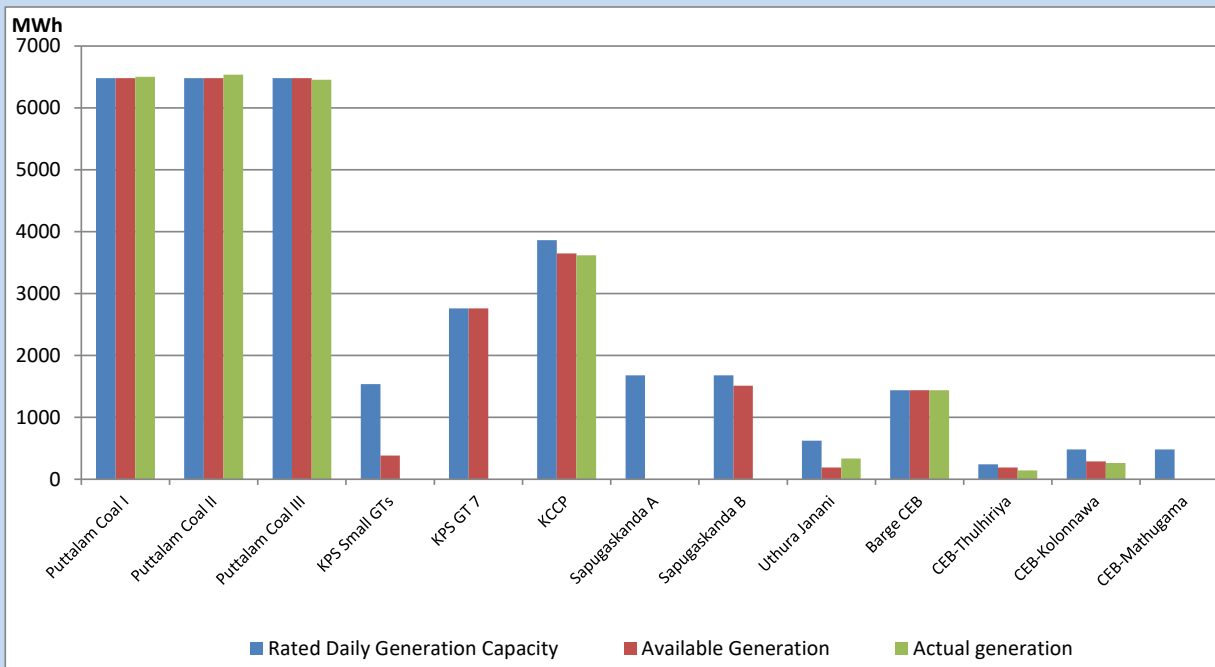
Category	Dispatch (GWh)	Percentage
CEB Hydro	150.70	19.83%
CEB Thermal Oil	77.03	10.14%
CEB Coal	397.10	52.25%
IPP Thermal	85.08	11.19%
SPP Wind	6.51	0.86%
CEB Wind	8.39	1.10%
SPP Solar	5.26	0.69%
SPP Solid Waste	4.31	0.57%
Mini Hydro	25.61	3.37%
Total	759.99	

For Current Year

Category	Dispatch (GWh)	Percentage
CEB Hydro	1,080.6	23.10%
CEB Thermal Oil	718.2	15.35%
CEB Coal	1,947.6	41.63%
IPP Thermal	678.0	14.49%
SPP Wind	48.9	1.05%
CEB Wind	62.2	1.33%
SPP Solar	28.9	0.62%
SPP Solid Waste	22.0	0.47%
Mini Hydro	92.0	1.97%
Total	4,678.1	

CEB owned Thermal Plant Dispatch

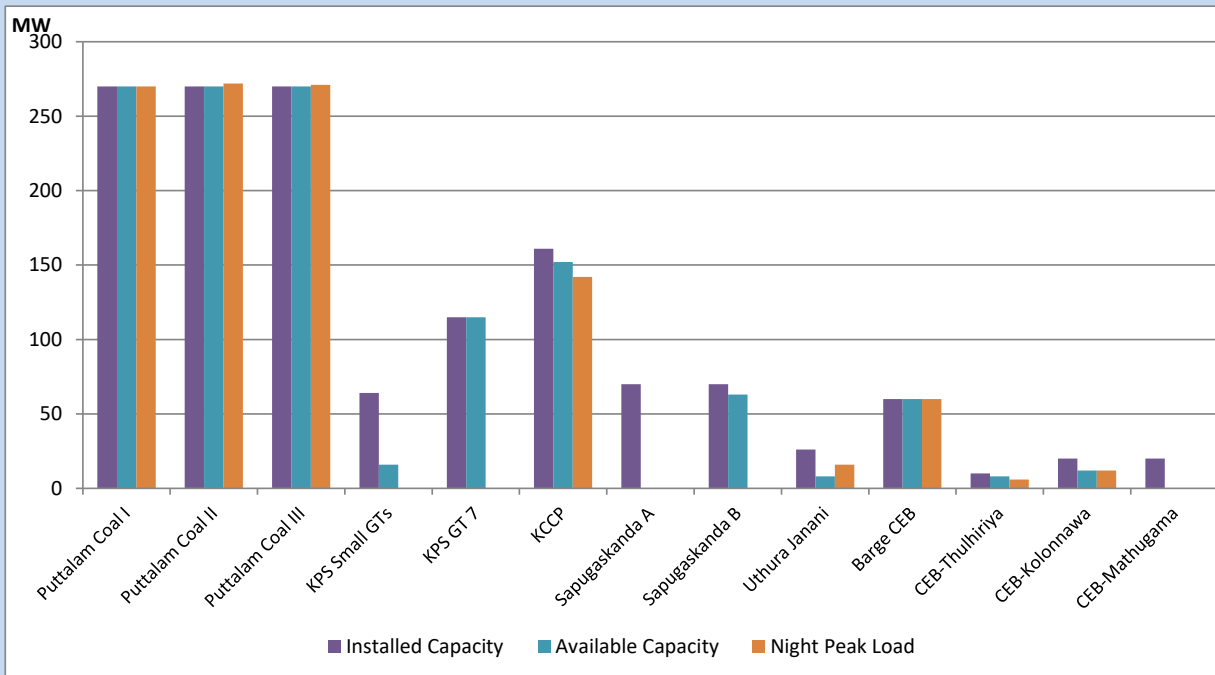
April 21, 2022



Available Generation is estimated based on plant availability at 6.00am on

April 22, 2022

CEB owned Thermal Plant Loading at the Night Peak



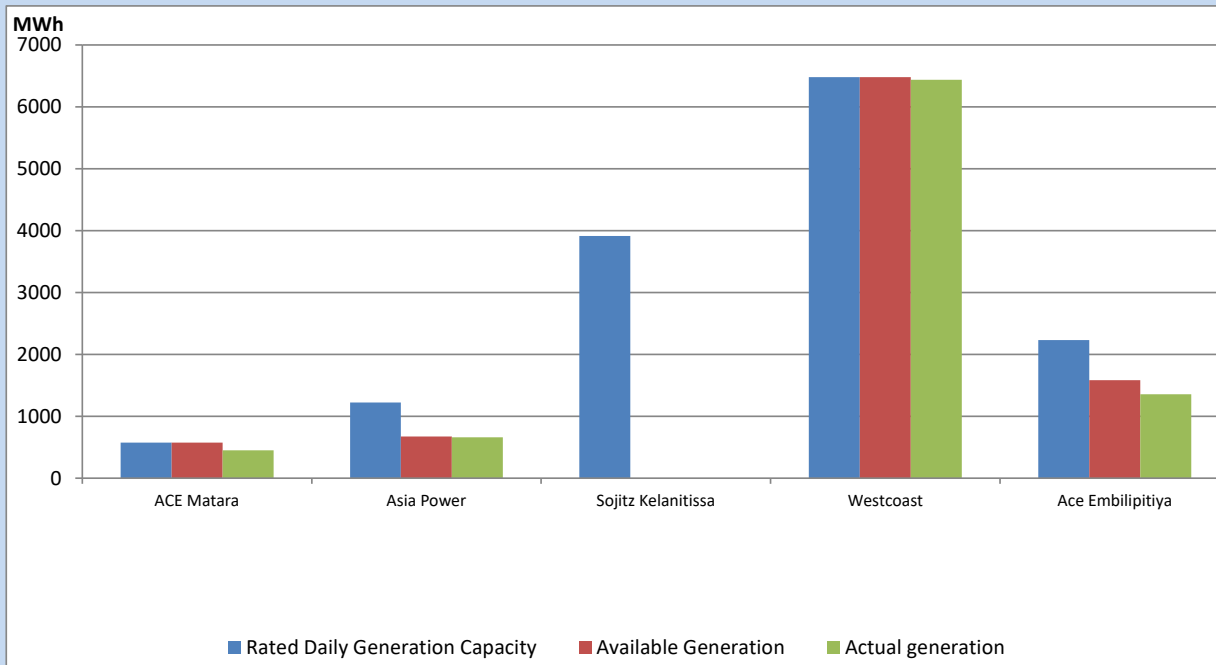
Note- Plant availability is recorded at 6.00 am on

April 22, 2022

IPP owned Thermal Plant Dispatch

April 21, 2022

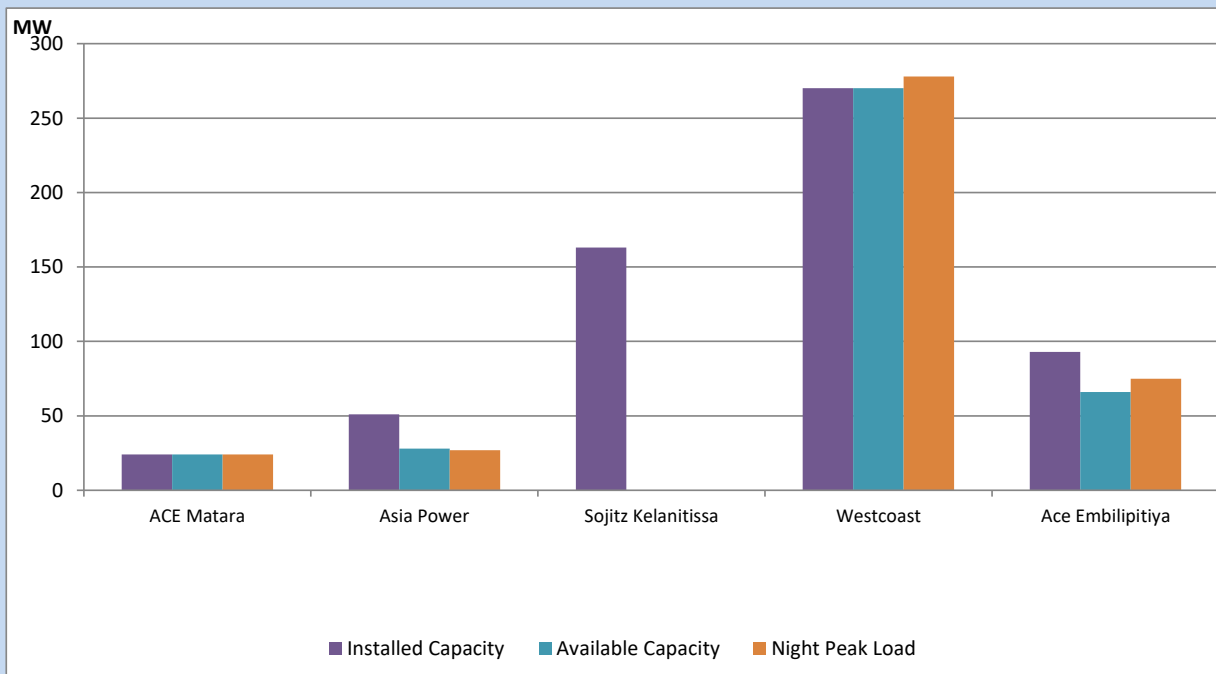
V Power Pallekale, Vpower Galle, V Power Horana, Vpower Hambantota, Vpower Valachchena and Altaqa Mahiyanganaya are not available due to expiration of PPAs



Available Generation is estimated based on plant availability at 6.00am on

April 22, 2022

IPP owned Thermal Plant Loading at the Night Peak

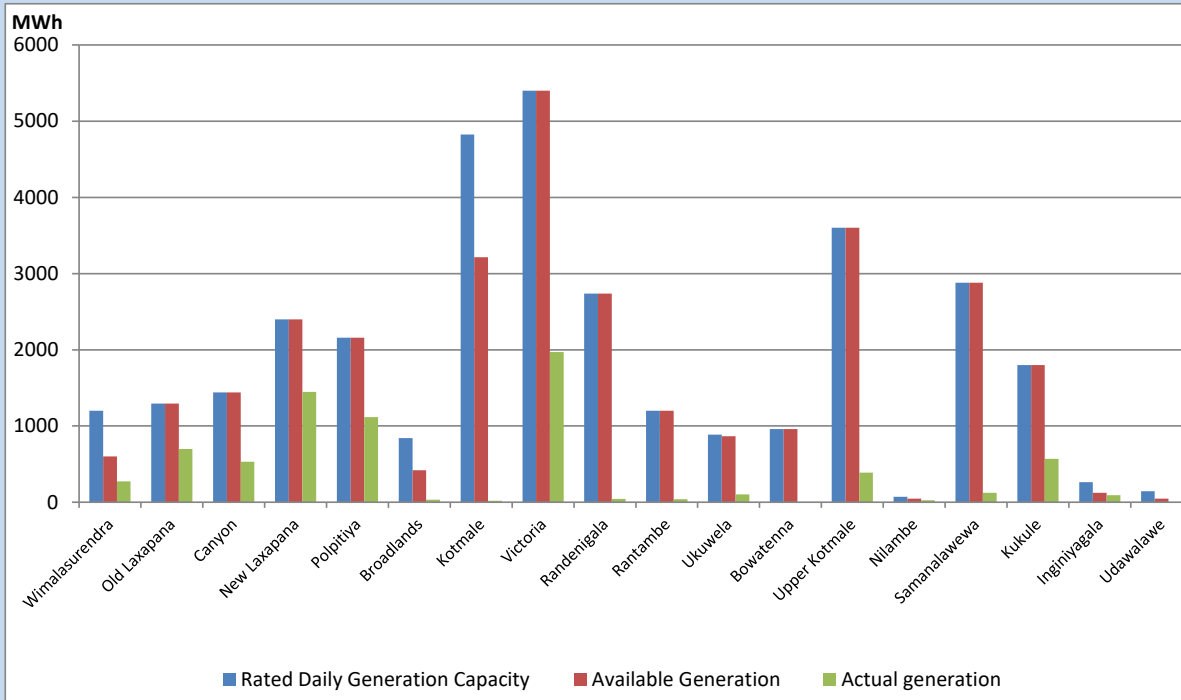


Note- Plant availability is recorded at 6.00 am on

April 22, 2022

Major Hydro Plant Dispatch

April 21, 2022

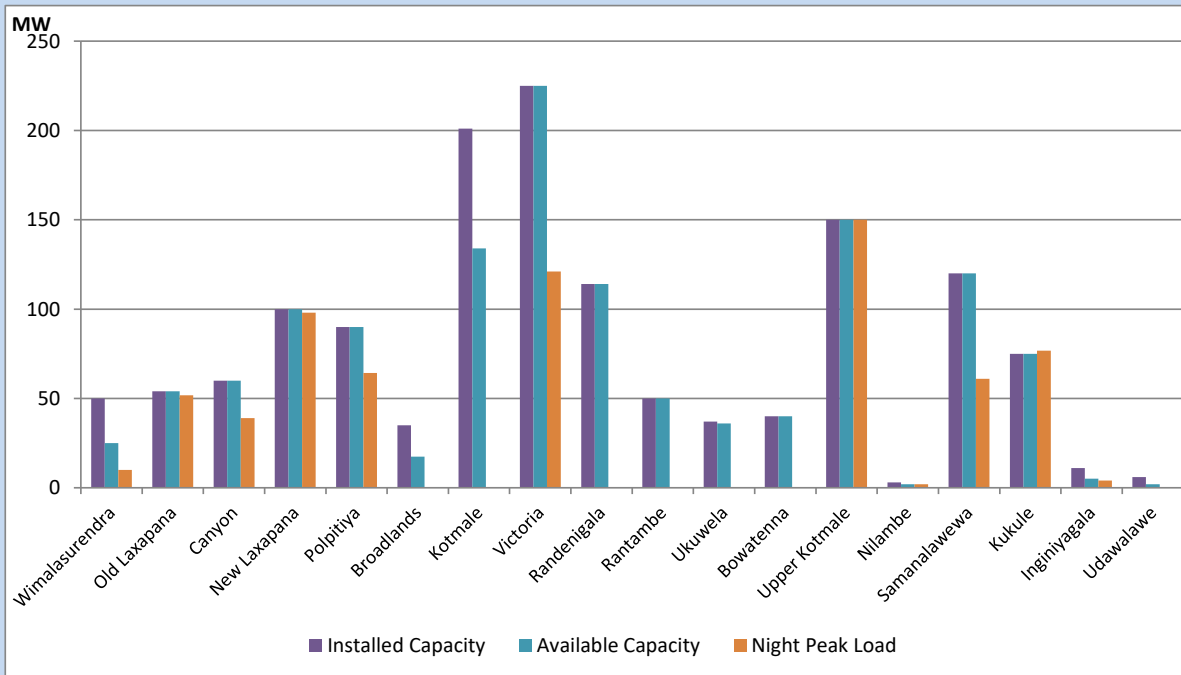


Available Generation is estimated based on plant availability at 6.00am on April 22, 2022
 Broadlands power plant is operating in the Commissioning Stage

April 22, 2022

Major Hydro Plant Loading at Night Peak

April 21, 2022



Note- Plant availability is recorded at 6.00 am on April 22, 2022
 Broadlands power plant is operating in the Commissioning Stage

Summary of Major Plant performance

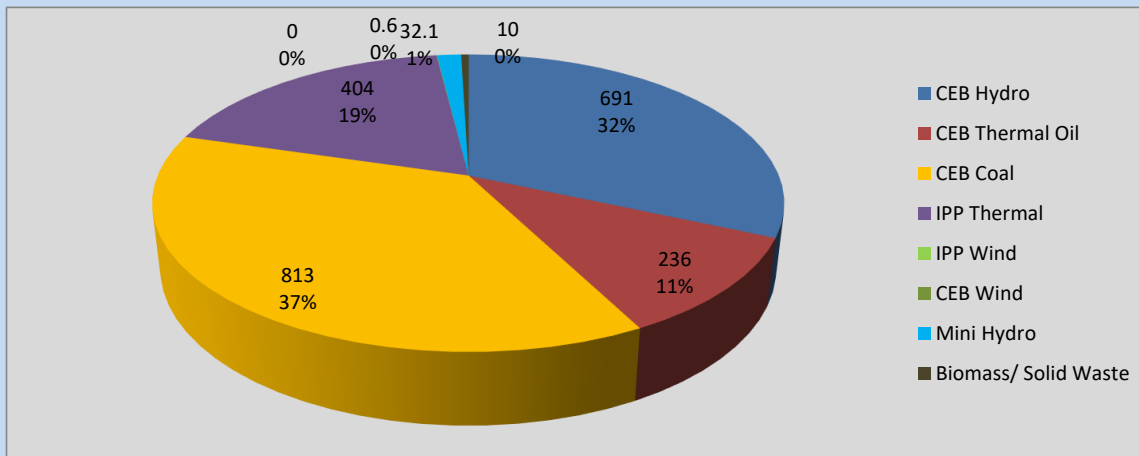
Plant	Installed Capacity	Plant Availability	Night peak Load	Plant Dispatch
	(MW)	(MW)	(MW)	(MWh)
Wimalasurendra	50	25	10	273
Old Laxapana	54	54	52	699
Canyon	60	60	39	530
New Laxapana	100	100	98	1,446
Polpitiya	90	90	64	1,116
Broadlands	35	18	0	33
Kotmale	201	134	0	20
Victoria	225	225	121	1,971
Randenigala	114	114	0	43
Rantambe	50	50	0	40
Ukuwela	37	36	0	102
Bowatenna	40	40	0	0
Upper Kotmale	150	150	150	389
Nilambe	3	2	2	26
Samanalawewa	120	120	61	123
Kukule	75	75	77	569
Inginiyagala	11	5	4	92
Udawalawe	6	2	0	0
Puttalam Coal I	270	270	270	6,502
Puttalam Coal II	270	270	272	6,538
Puttalam Coal III	270	270	271	6,456
KPS Small GTs	64	16	0	0
KPS GT 7	115	115	0	0
KCCP	161	152	142	3,620
Sapugaskanda A	70	0	0	0
Sapugaskanda B	70	63	0	0
Uthura Janani	26	8	16	335
Barge CEB	60	60	60	1,439
CEB-Thulhiriya	10	8	6	141
CEB-Kolonnawa	20	12	12	263
CEB-Mathugama	20	0	0	0
ACE Matara	24	24	24	452
Asia Power	51	28	27	660
Sojitz Kelanitissa	163	0	0	0
West Coast	270	270	278	6,438
ACE Embilipitiya	93	66	75	1,355
Total	3,448	2,932	2,173	43,464

Plant availability is the availability recorded at 6 am on

April 22, 2022

Contribution to the Night Peak in MW

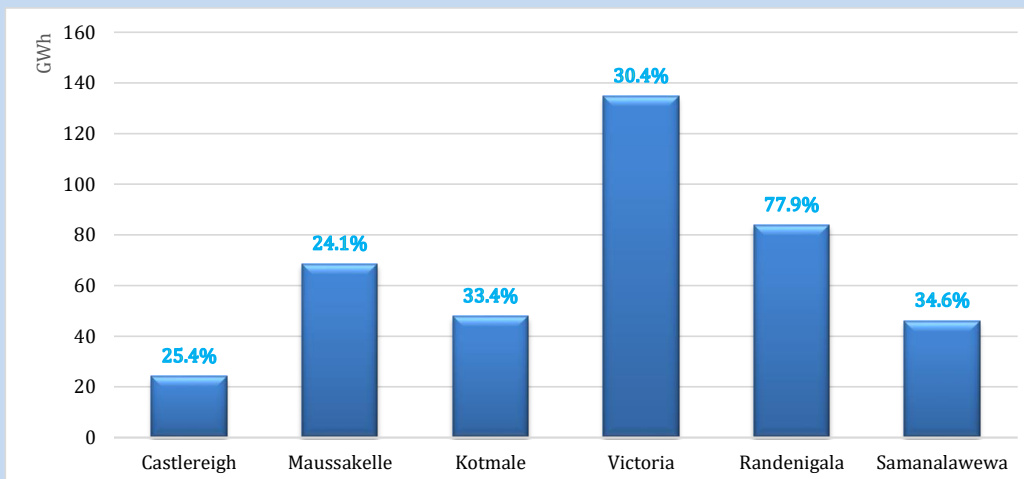
April 21, 2022



Night Peak*	2,186.4 MW
Day Peak	1,906.1 MW
Minimum Demand	1,457.7 MW

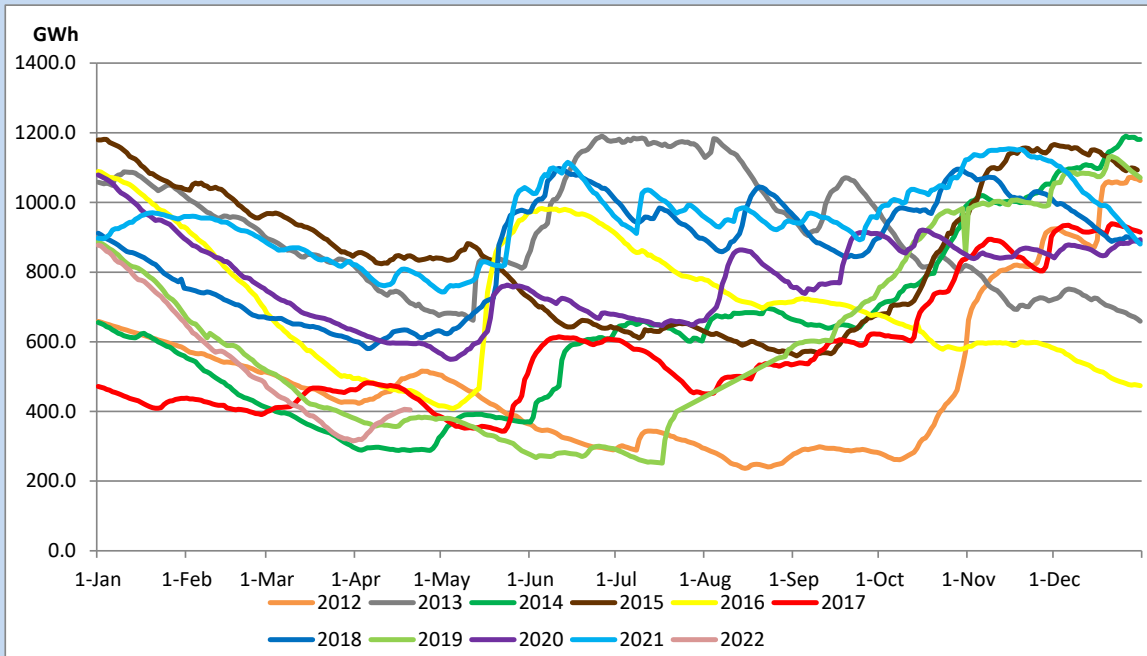
Above figures are excluding contribution from Roof Top Solar, 1MW solar, certain Wind plants and Mini Hydro plants

Reservoir Levels - as at 06.00 Hr on April 22, 2022



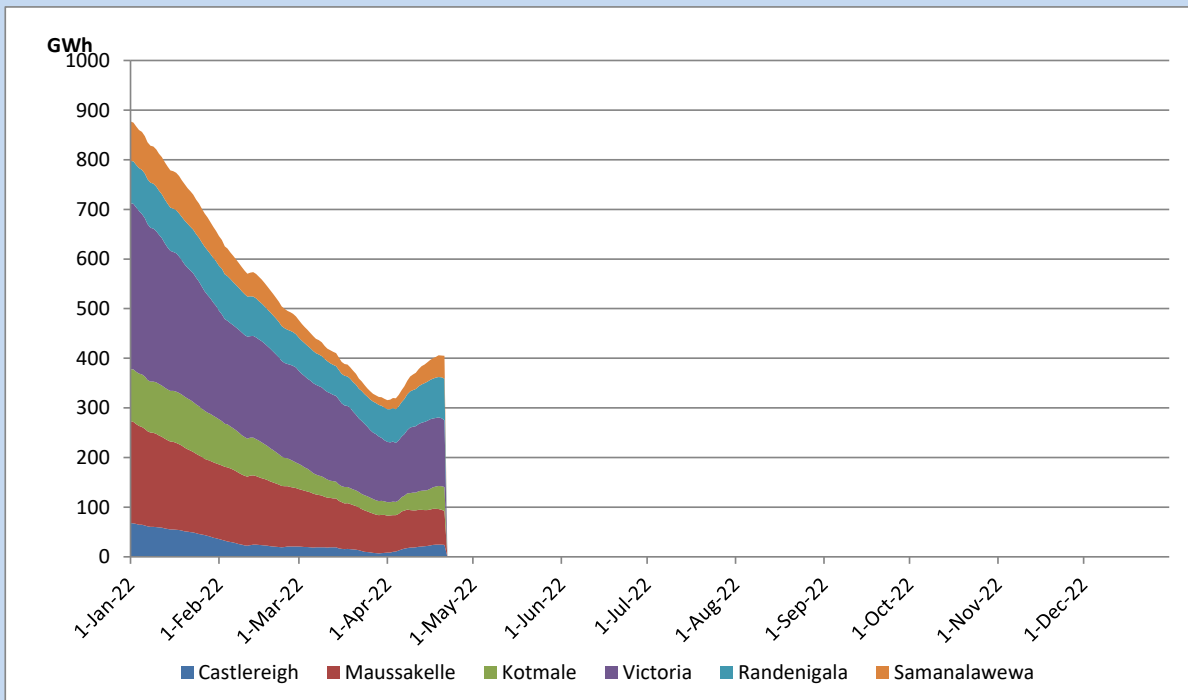
Total Reservoir Level	405 GWh
% of Total capacity	37.6%

Comparison of Total Reservoir Storage Levels with Past Years

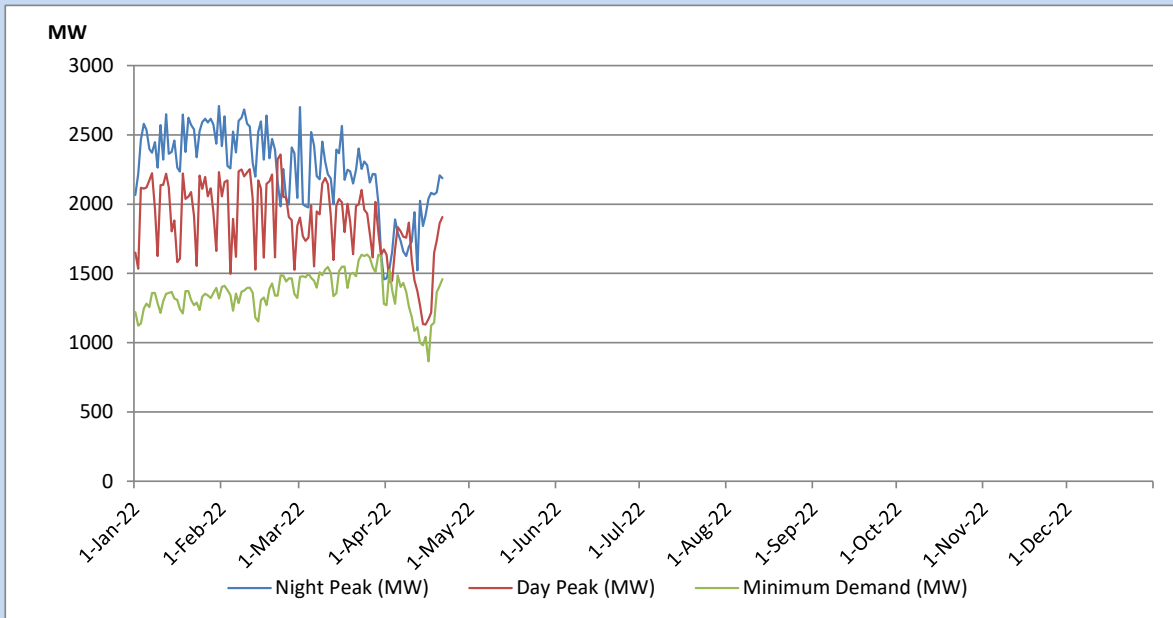


Data for 2018 and 2019 are only available for part of year.

Variation of Major Hydro Reservoir Levels in the current year (GWh)



Variation of Demand during the current year

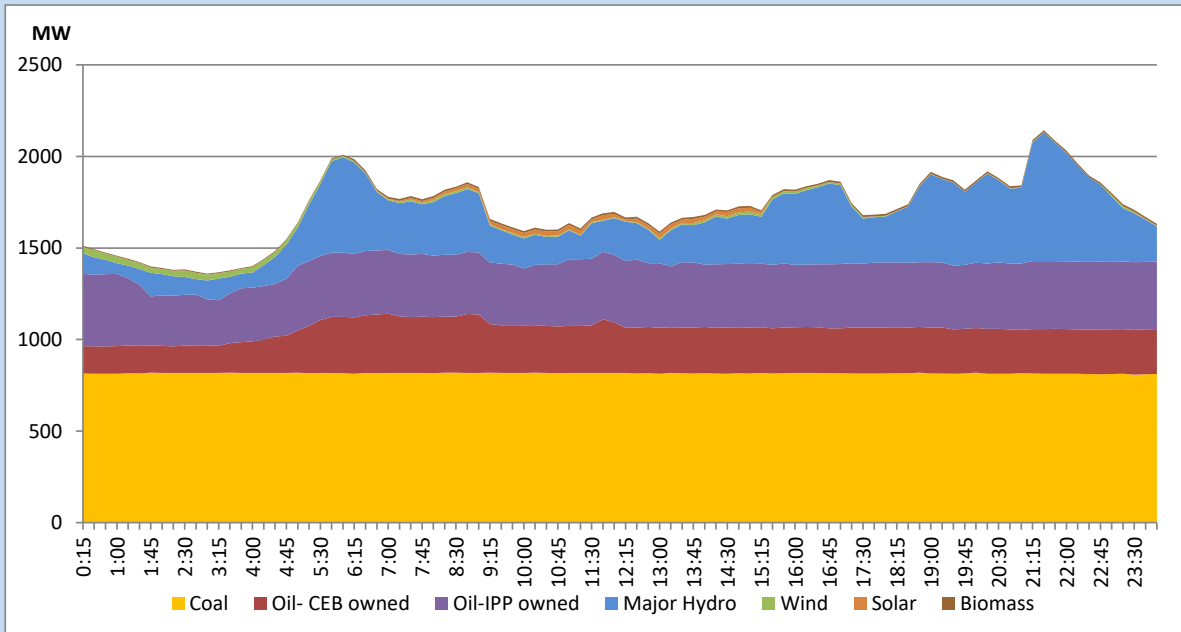


The above figures are excluding contribution from Roof Top Solar, 1MW solar, certain Wind plants and Mini Hydro plants

Daily Load Curve of the Previous day

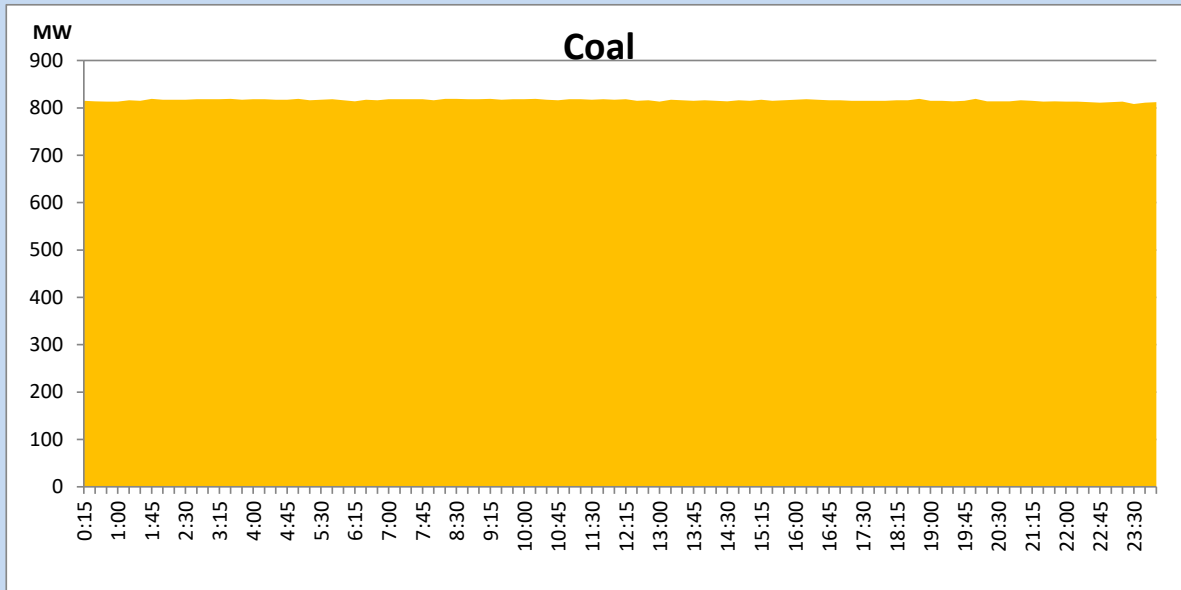
April 20, 2022

Solar and wind data is based on Telemetered Power Stations only



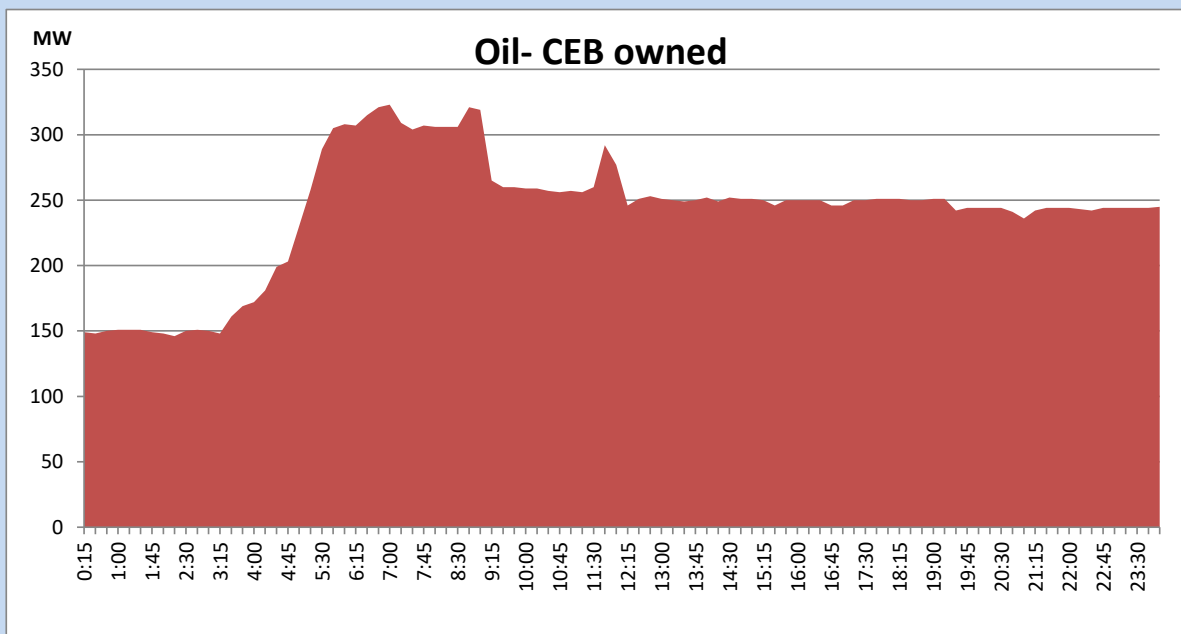
Coal Generation during the Previous day

April 20, 2022



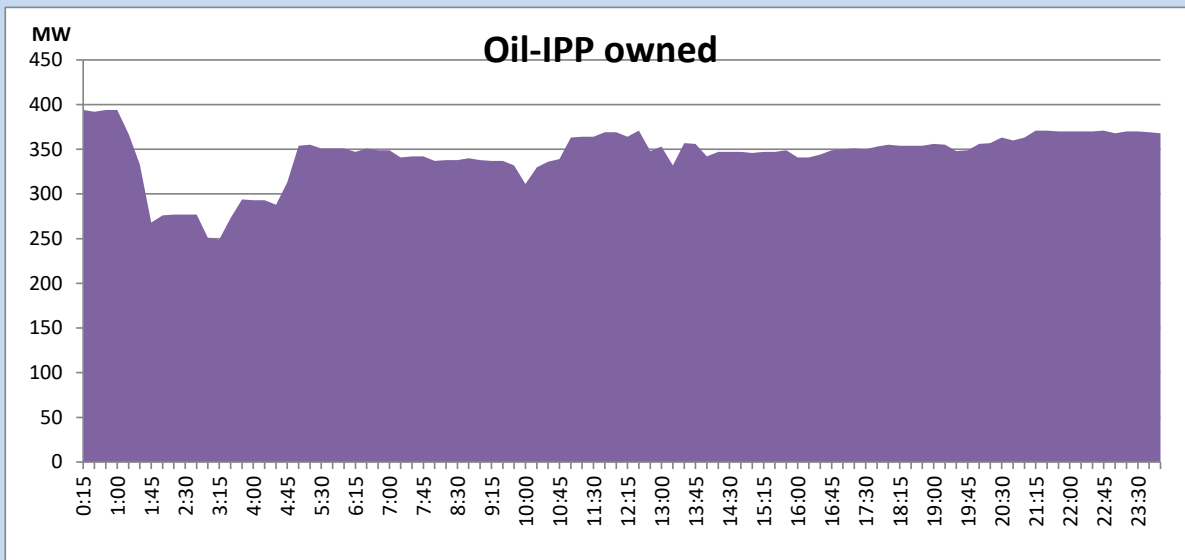
CEB Oil Plant Generation during the Previous day

April 20, 2022



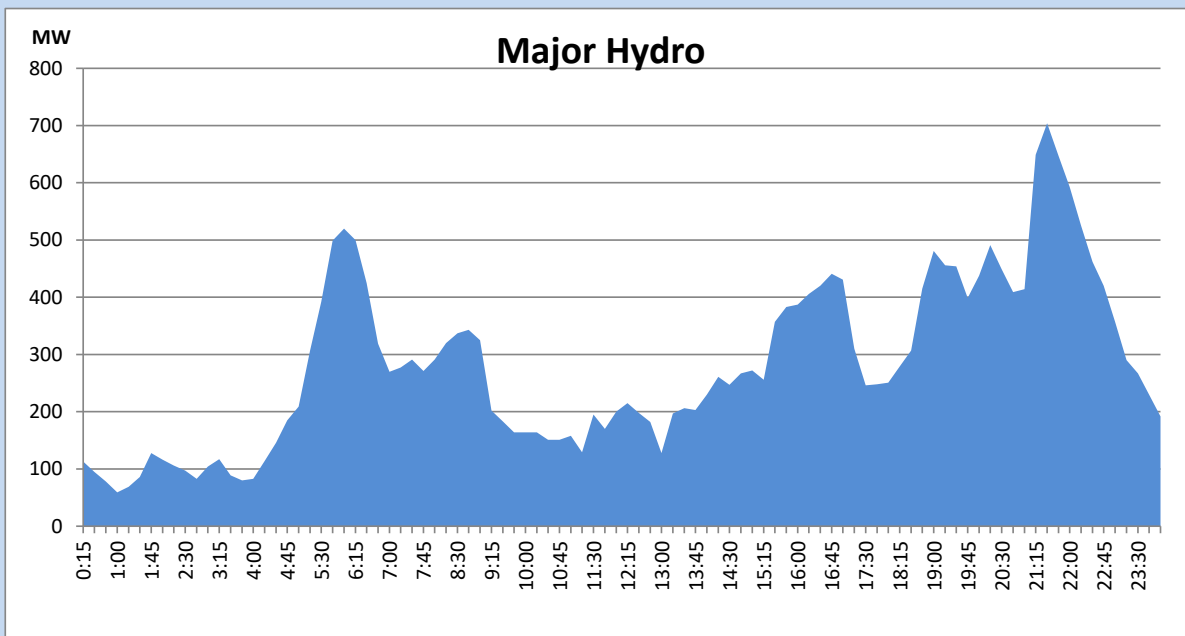
IPP Oil Plant Generation during the Previous day

April 20, 2022



Major Hydro Generation during the Previous day

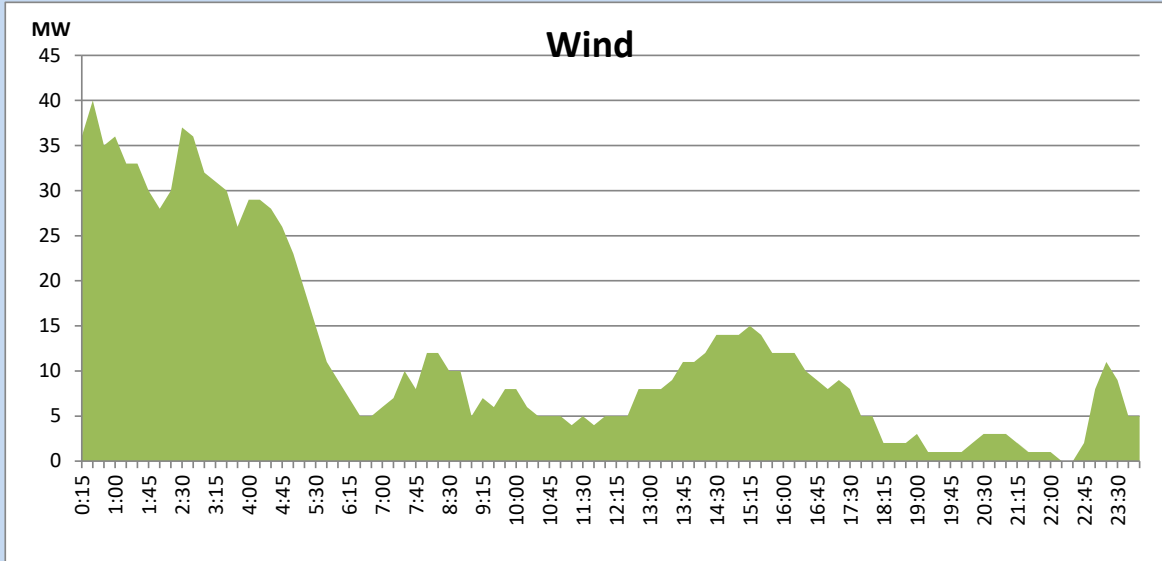
April 20, 2022



Wind Generation during the Previous day

April 20, 2022

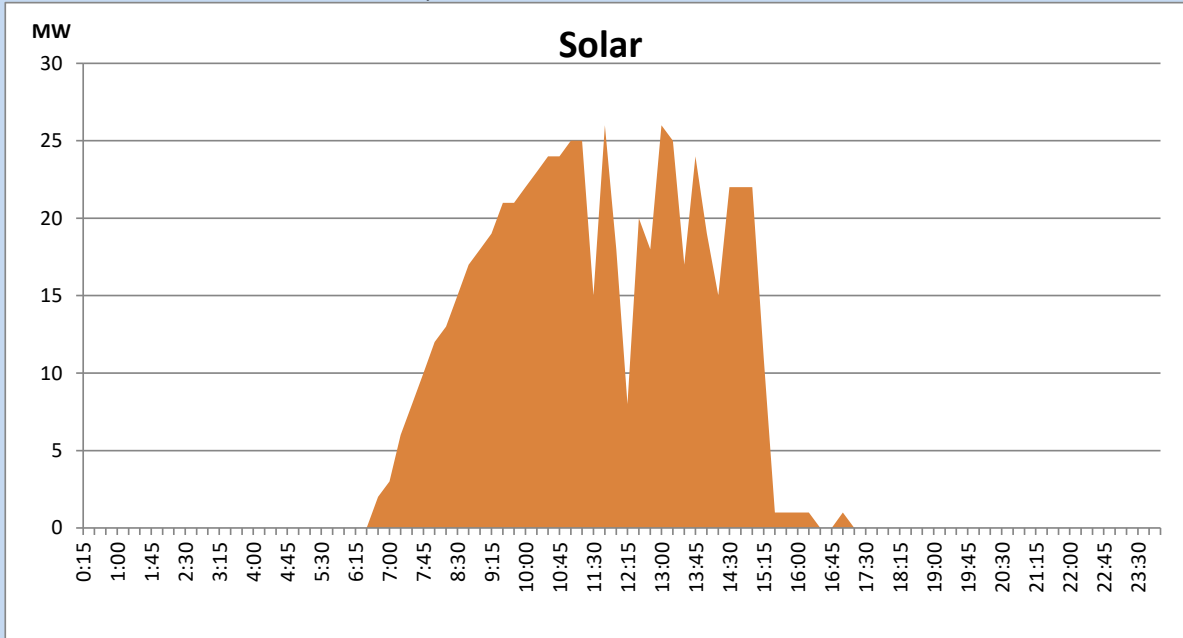
Based on Telemetered Power Stations only



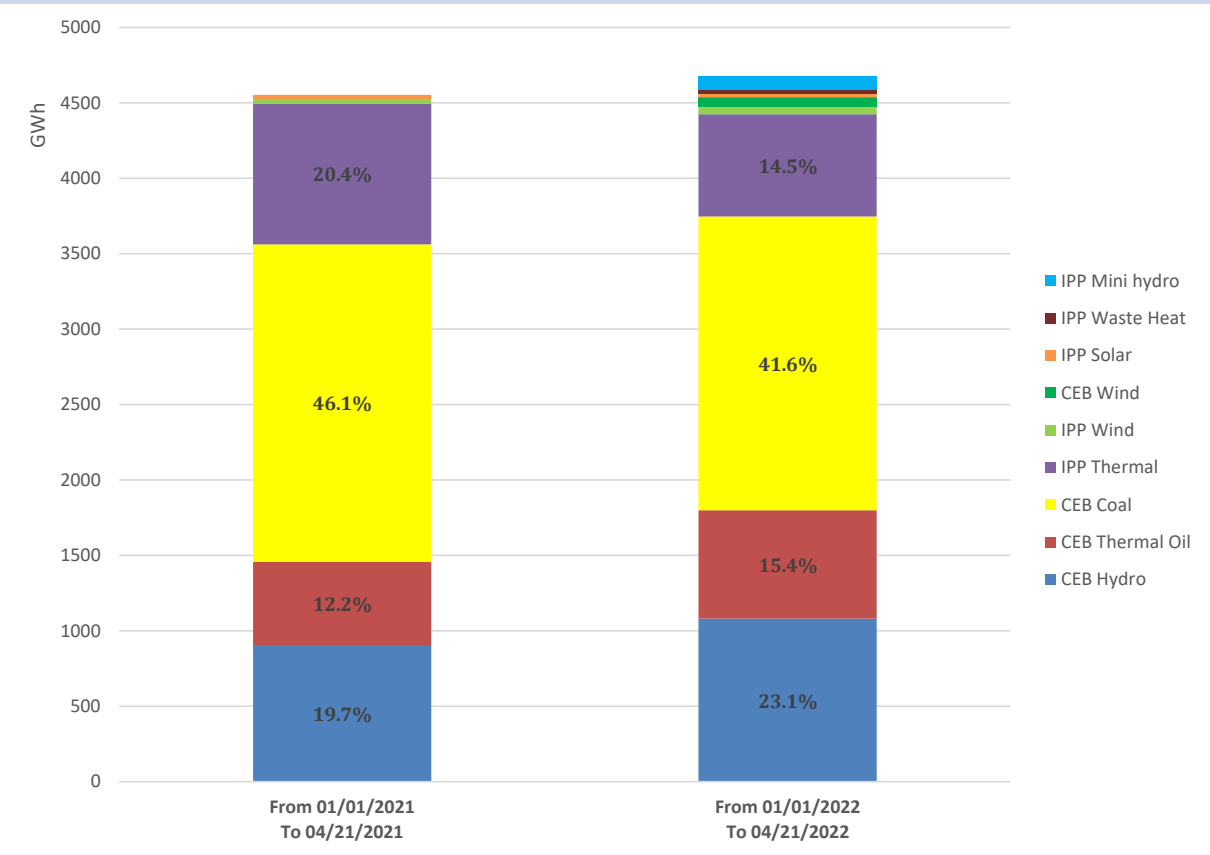
Solar Generation during the Previous day

April 20, 2022

Based on Telemetered Power Stations only



Cumulative Dispatch Comparison with Last Year



Thermal Plant Fuel types

Power Station	Primary Fuel
CEB Thermal	
Sapugaskanda 1	Heavy Fuel
Sapugaskanda 2	Heavy Fuel
Kelanitissa Small Gas Turbines	Auto Diesel
GT 7 - Kelanitissa	Auto Diesel
Kelanitissa CCY	Naphtha & Diesel
Lakvijaya 1	Coal
Lakvijaya 2	Coal
Lakvijaya 3	Coal
Uthuru Janani	Heavy Fuel
Barge CEB	Heavy Fuel

Power Station	Primary Fuel
Private Thermal	
Sojitz - Kelanitissa	Auto Diesel
West Coast	Heavy Fuel