

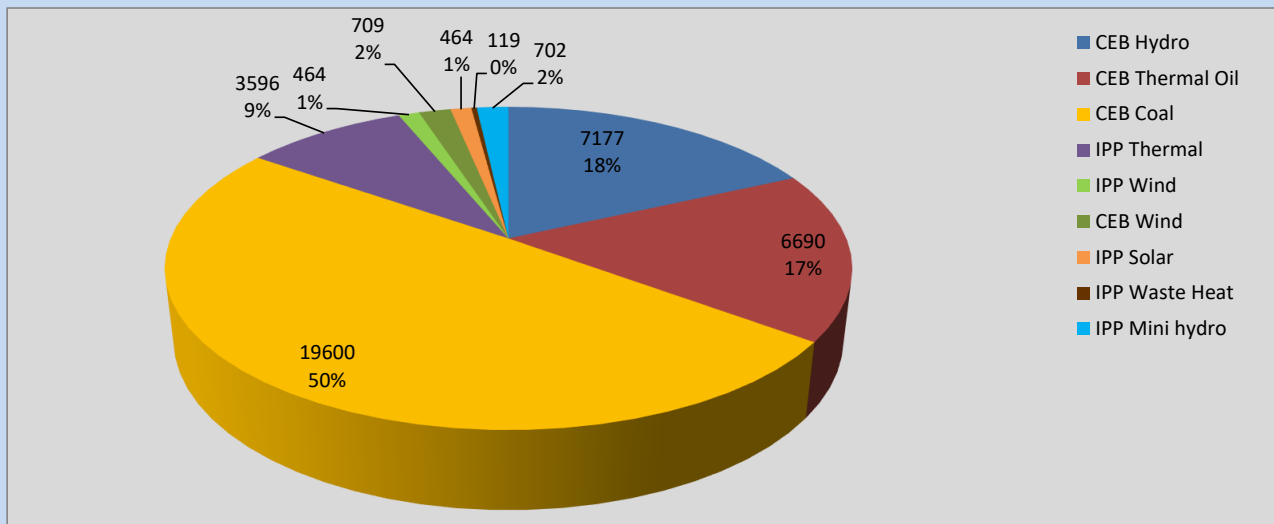
Generation and Reservoirs Statistics

March 30, 2022



PUBLIC UTILITIES COMMISSION OF SRI LANKA

Daily Generation Mix in MWh



Total Generation **39,350 MWh**

Note: Above data is excluding contribution from Roof Top Solar, 1MW Solar and certain Mini Hydro plants

Cumulative Dispatch

Note: Following data is Excluding contribution from Roof Top Solar, 1MW solar and Mini Hydro plants

For Current Month

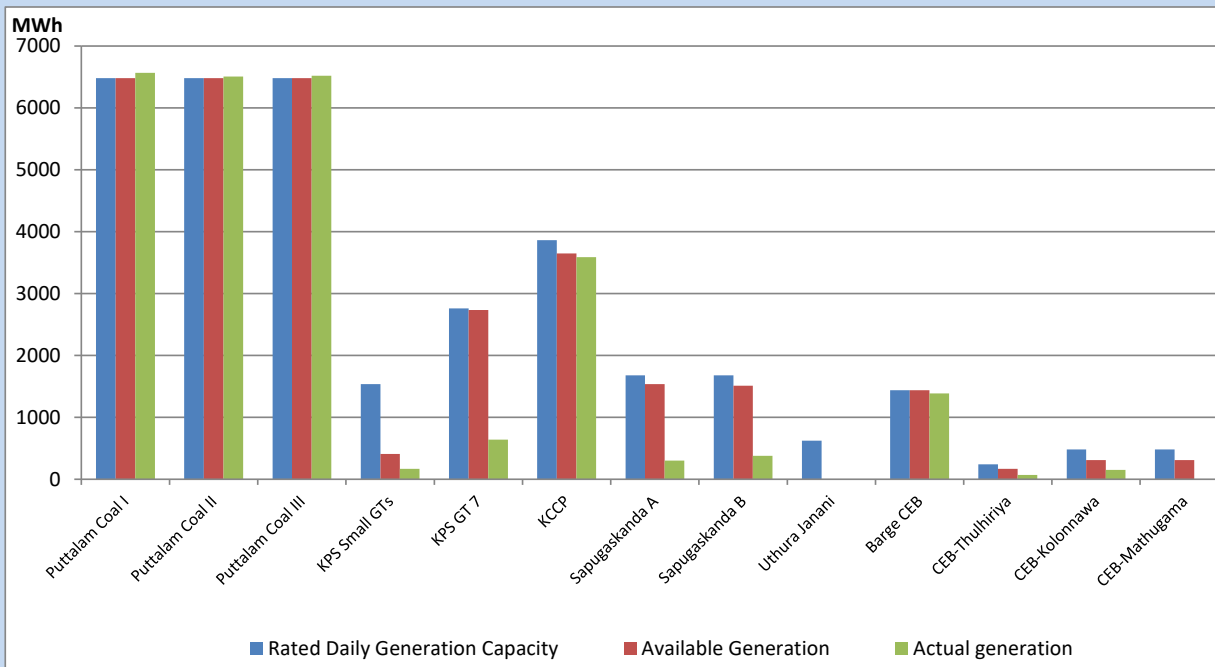
Category	Dispatch (GWh)	Percentage
CEB Hydro	244.79	18.55%
CEB Thermal Oil	223.33	16.92%
CEB Coal	587.33	44.51%
IPP Thermal	200.64	15.20%
SPP Wind	13.98	1.06%
CEB Wind	19.06	1.44%
SPP Solar	8.01	0.61%
SPP Solid Waste	6.50	0.49%
Mini Hydro	15.96	1.21%
Total	1,319.60	

For Current Year

Category	Dispatch (GWh)	Percentage
CEB Hydro	922.6	23.76%
CEB Thermal Oil	635.6	16.37%
CEB Coal	1,530.9	39.43%
IPP Thermal	592.1	15.25%
SPP Wind	42.1	1.08%
CEB Wind	53.3	1.37%
SPP Solar	23.3	0.60%
SPP Solid Waste	17.6	0.45%
Mini Hydro	65.7	1.69%
Total	3,882.8	

CEB owned Thermal Plant Dispatch

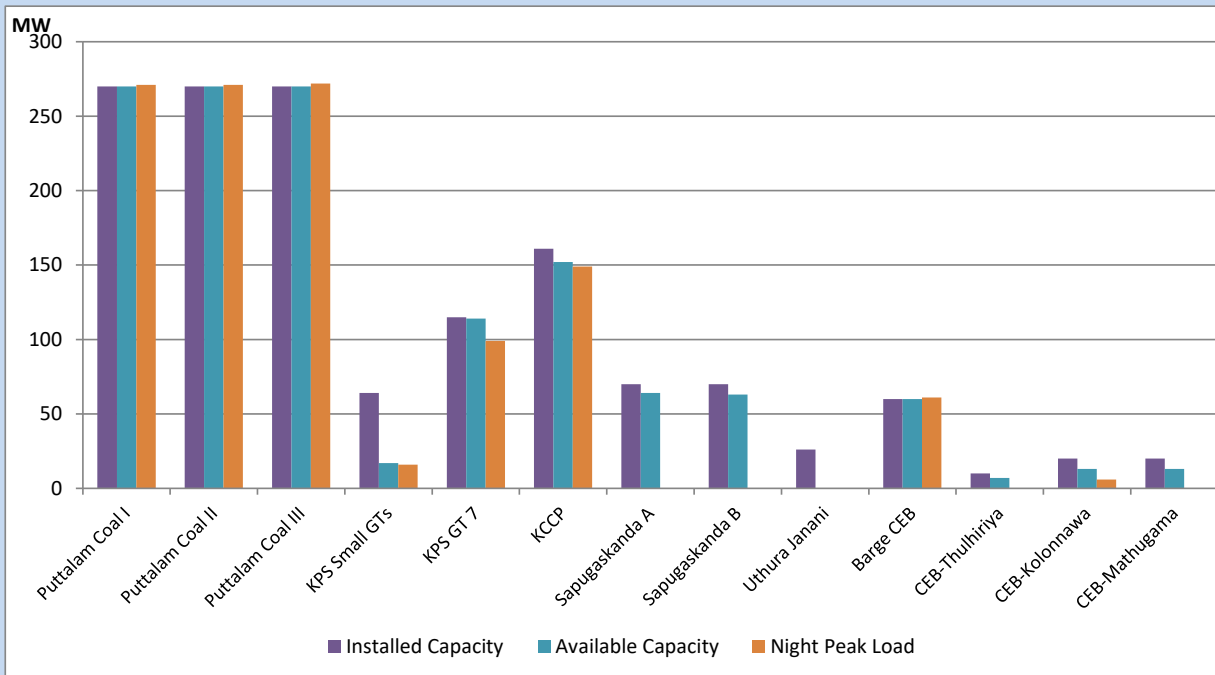
March 30, 2022



Available Generation is estimated based on plant availability at 6.00am on

March 31, 2022

CEB owned Thermal Plant Loading at the Night Peak



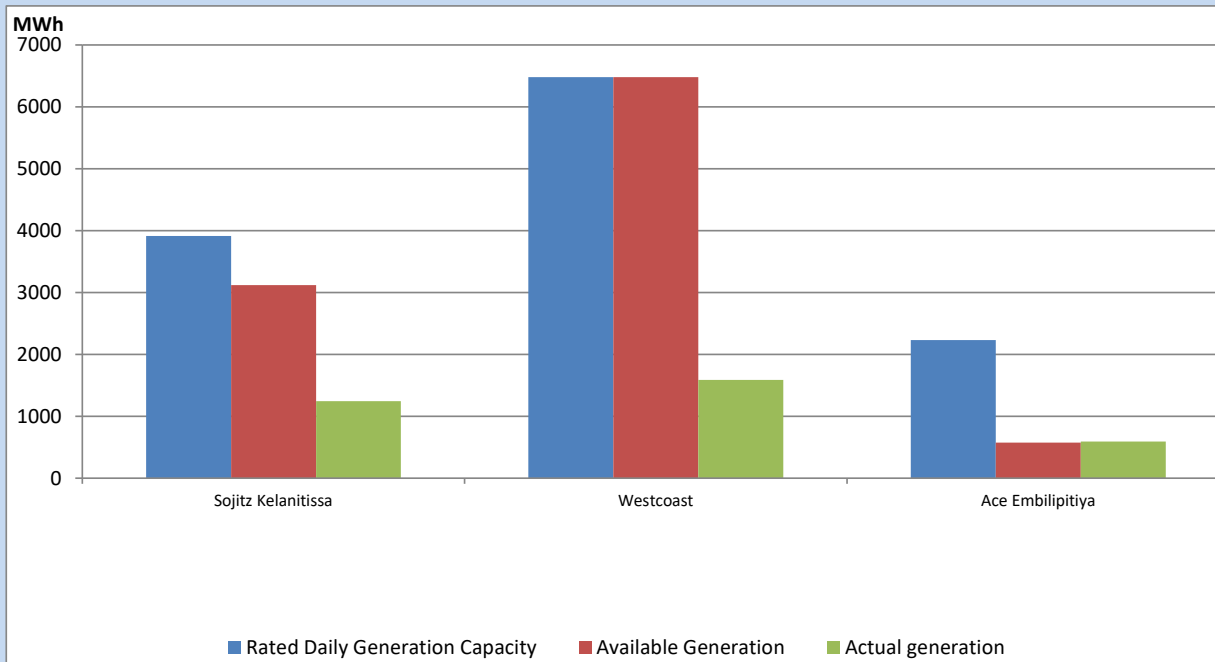
Note- Plant availability is recorded at 6.00 am on

March 31, 2022

IPP owned Thermal Plant Dispatch

March 30, 2022

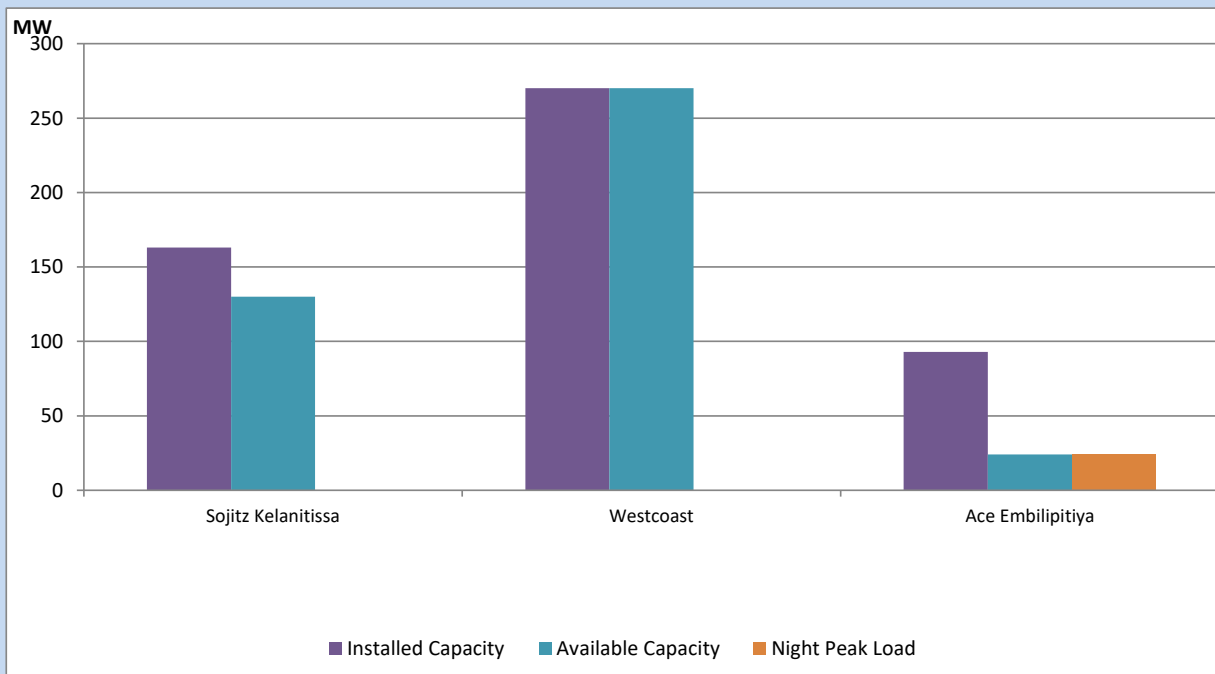
ACE Matara, Asia Power, V Power Pallekale, Vpower Galle, V Power Horana, Vpower Hambantota, Vpower Valachchena and Altaqa Mahiyanganaya are not available due to expiration of PPAs



Available Generation is estimated based on plant availability at 6.00am on

March 31, 2022

IPP owned Thermal Plant Loading at the Night Peak

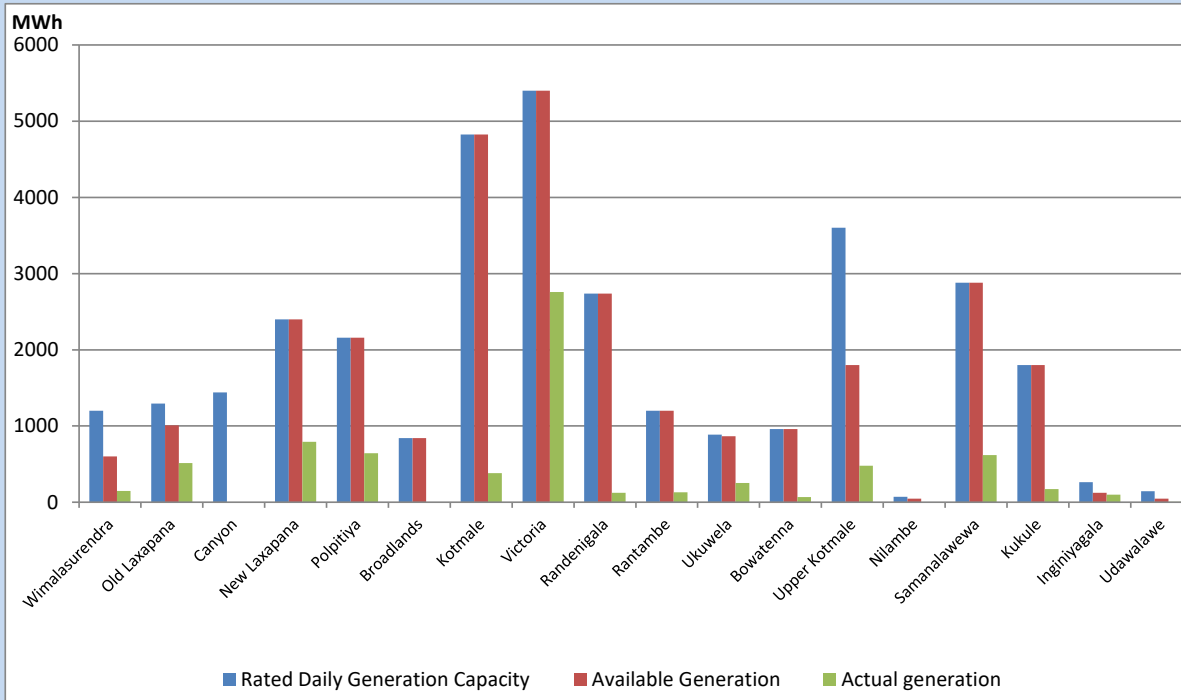


Note- Plant availability is recorded at 6.00 am on

March 31, 2022

Major Hydro Plant Dispatch

March 30, 2022

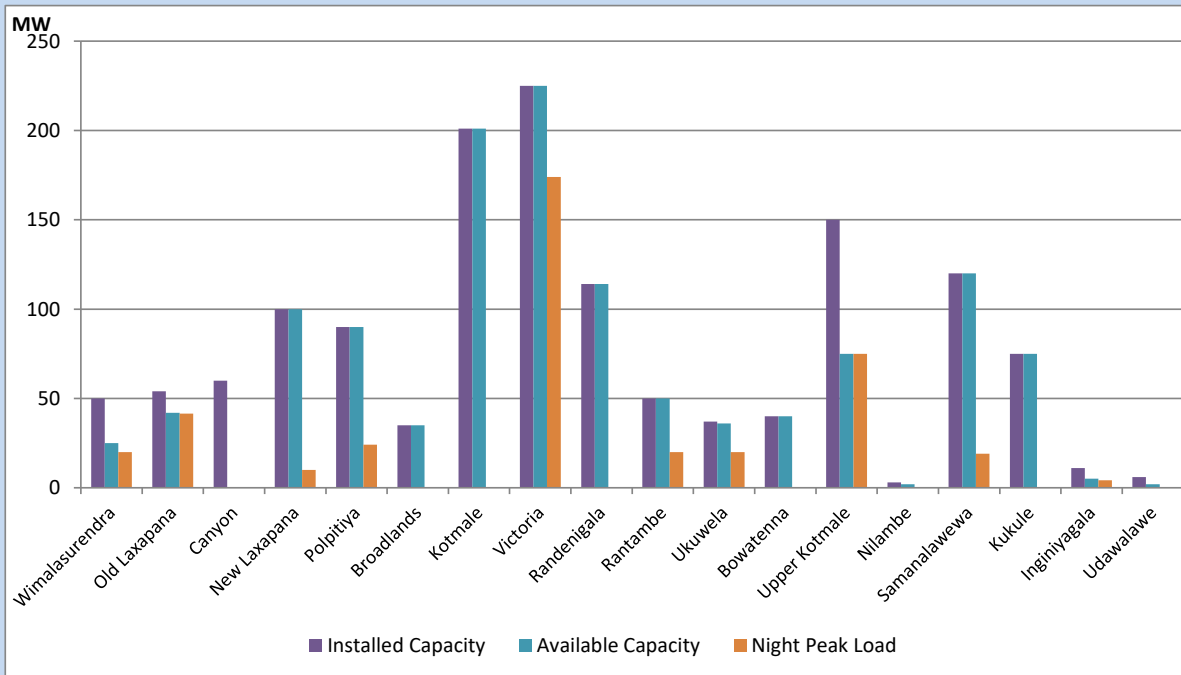


Available Generation is estimated based on plant availability at 6.00am on
Broadlands power plant is operating in the Commissioning Stage

March 31, 2022

Major Hydro Plant Loading at Night Peak

March 30, 2022



Note- Plant availability is recorded at 6.00 am on
Broadlands power plant is operating in the Commissioning Stage

March 31, 2022

Summary of Major Plant performance

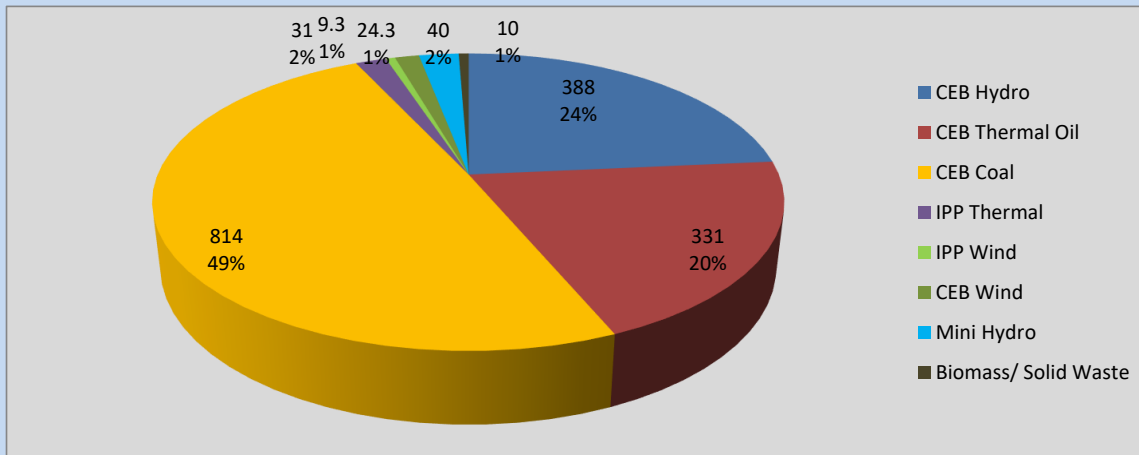
Plant	Installed Capacity	Plant Availability	Night peak Load	Plant Dispatch
	(MW)	(MW)	(MW)	(MWh)
Wimalasurendra	50	25	20	146
Old Laxapana	54	42	42	513
Canyon	60	0	0	0
New Laxapana	100	100	10	791
Polpitiya	90	90	24	643
Broadlands	35	35	0	0
Kotmale	201	201	0	380
Victoria	225	225	174	2,758
Randenigala	114	114	0	122
Rantambe	50	50	20	129
Ukuwela	37	36	20	253
Bowatenna	40	40	0	69
Upper Kotmale	150	75	75	480
Nilambe	3	2	0	0
Samanalawewa	120	120	19	618
Kukule	75	75	0	172
Inginiyagala	11	5	4	98
Udawalawe	6	2	0	5
Puttalam Coal I	270	270	271	6,569
Puttalam Coal II	270	270	271	6,509
Puttalam Coal III	270	270	272	6,522
KPS Small GTs	64	17	16	169
KPS GT 7	115	114	99	639
KCCP	161	152	149	3,589
Sapugaskanda A	70	64	0	300
Sapugaskanda B	70	63	0	378
Uthura Janani	26	0	0	0
Barge CEB	60	60	61	1,388
CEB-Thulhiriya	10	7	0	71
CEB-Kolonnawa	20	13	6	153
CEB-Mathugama	20	13	0	3
Sojitz Kelanitissa	163	130	0	1,246
West Coast	270	270	0	1,588
ACE Embilipitiya	93	24	24	593
Total	3,373	2,974	1,660	39,181

Plant availability is the availability recorded at 6 am on

March 31, 2022

Contribution to the Night Peak in MW

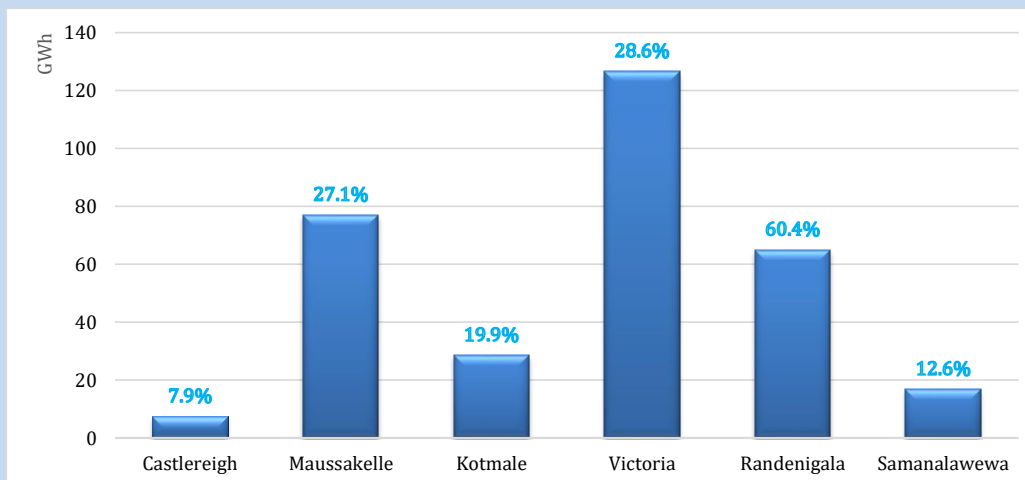
March 30, 2022



Night Peak*	1,647.4 MW
Day Peak	1,633.4 MW
Minimum Demand	1,625.6 MW

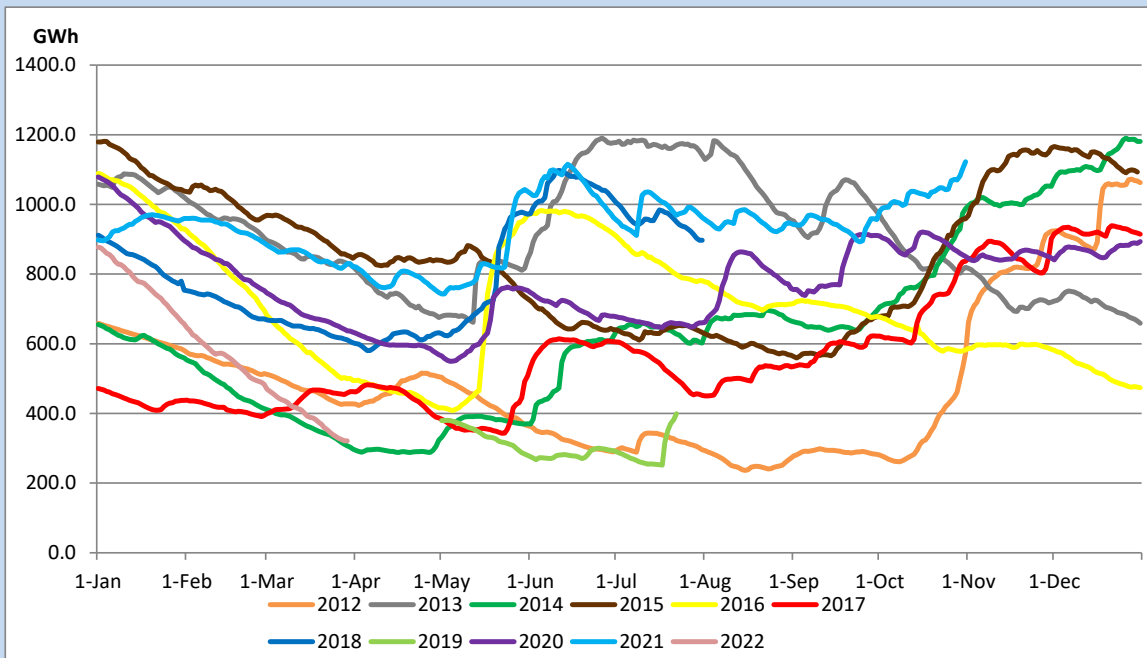
Above figures are excluding contribution from Roof Top Solar, 1MW solar, certain Wind plants and Mini Hydro plants

Reservoir Levels - as at 06.00 Hr on March 31, 2022



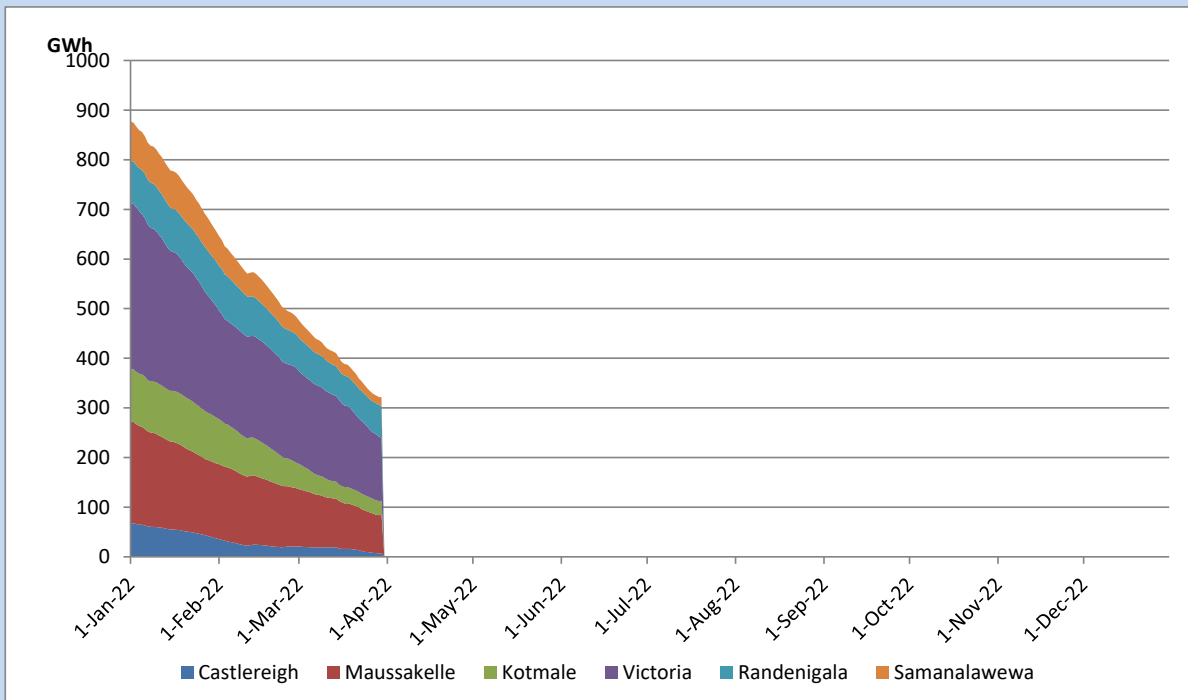
Total Reservoir Level	321.3 GWh
% of Total capacity	26.1%

Comparison of Total Reservoir Storage Levels with Past Years

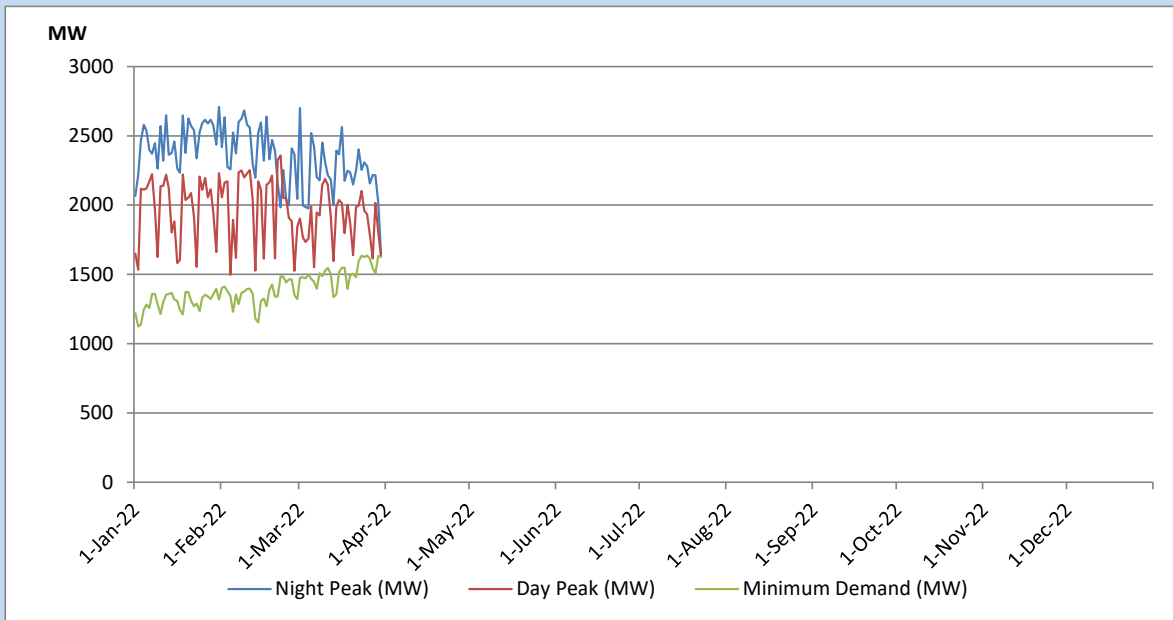


Data for 2018 and 2019 are only available for part of year.

Variation of Major Hydro Reservoir Levels in the current year (GWh)



Variation of Demand during the current year

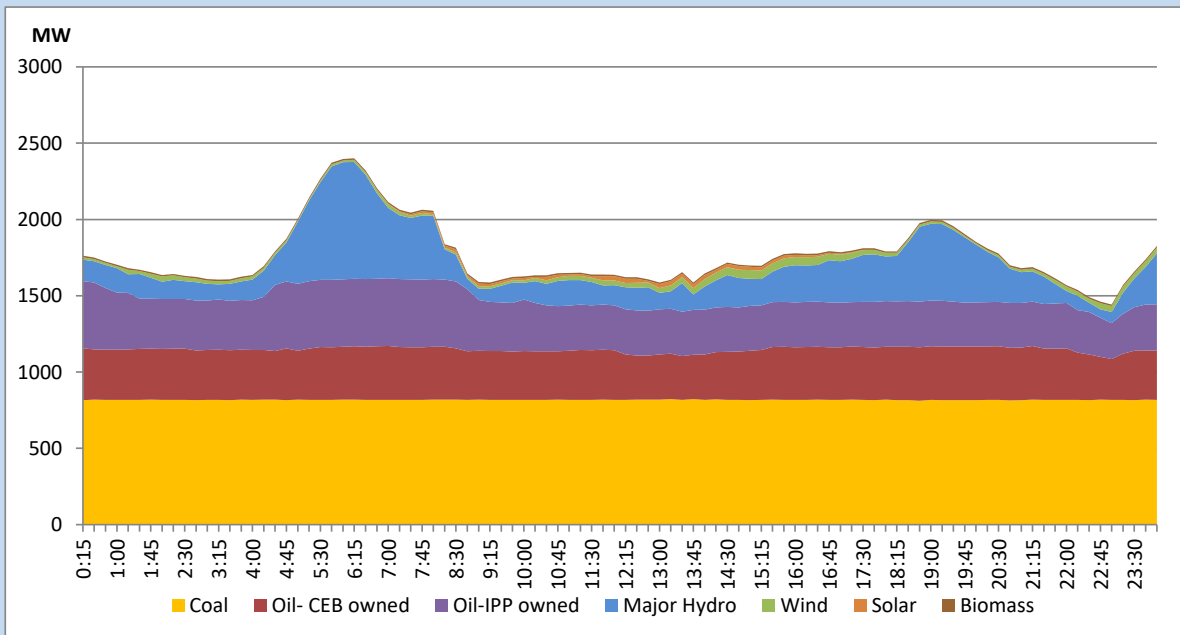


The above figures are excluding contribution from Roof Top Solar, 1MW solar, certain Wind plants and Mini Hydro plants

Daily Load Curve of the Previous day

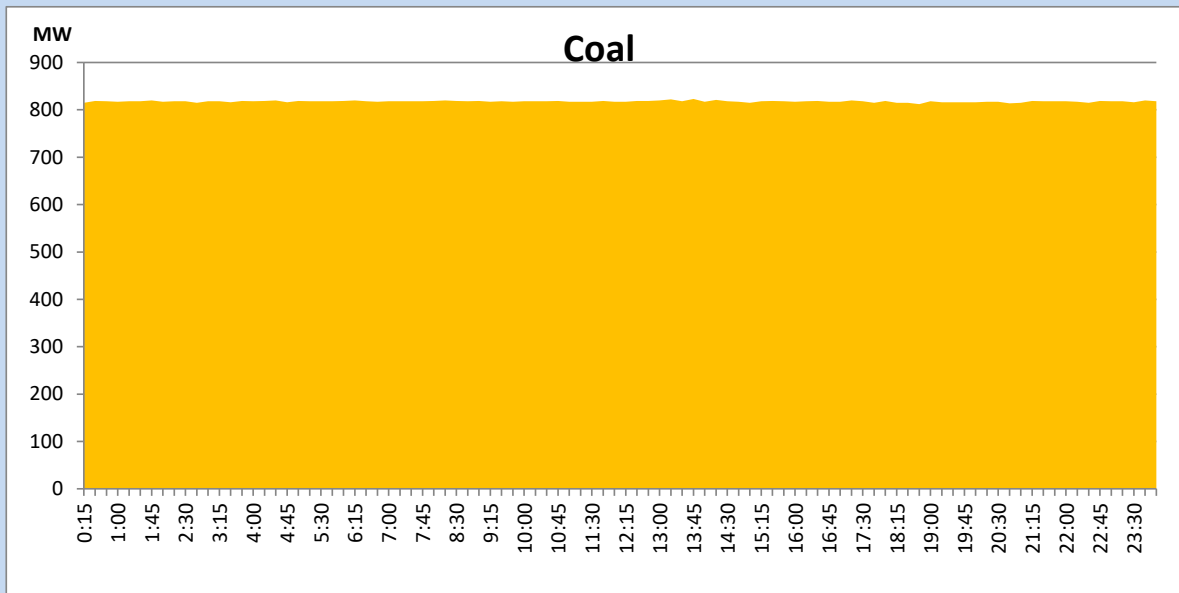
March 29, 2022

Solar and wind data is based on Telemetered Power Stations only



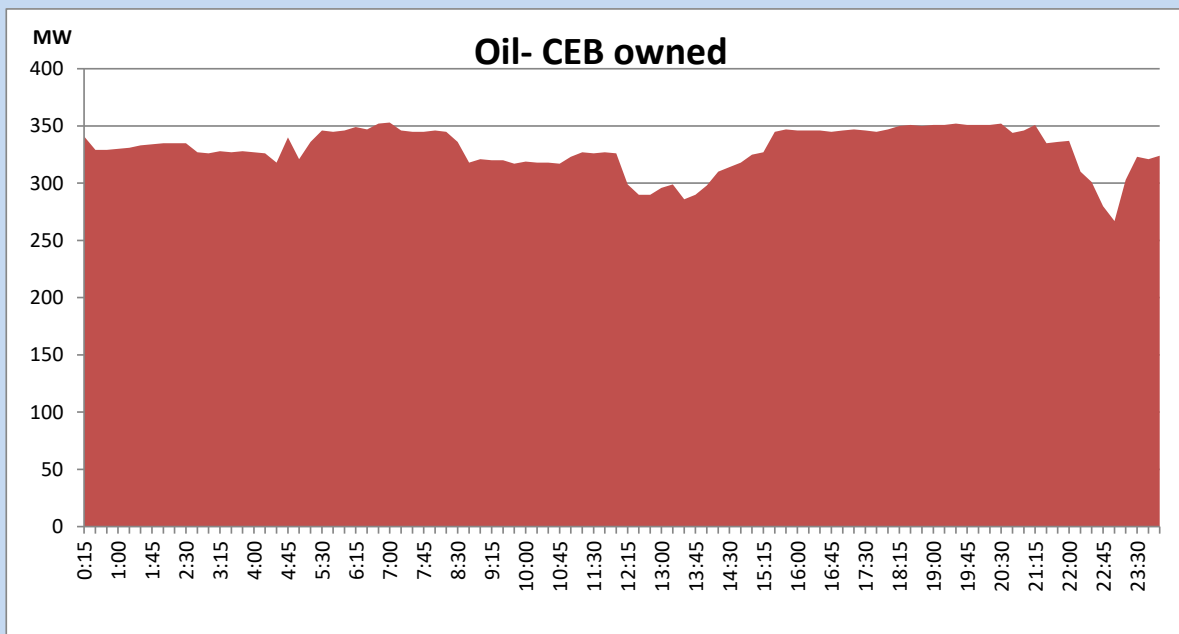
Coal Generation during the Previous day

March 29, 2022



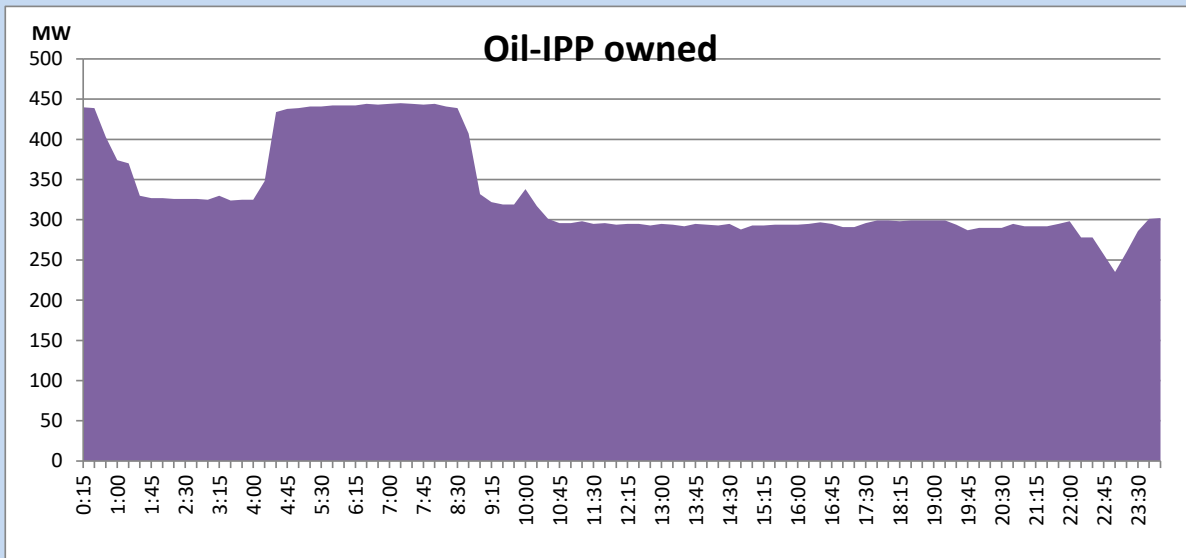
CEB Oil Plant Generation during the Previous day

March 29, 2022



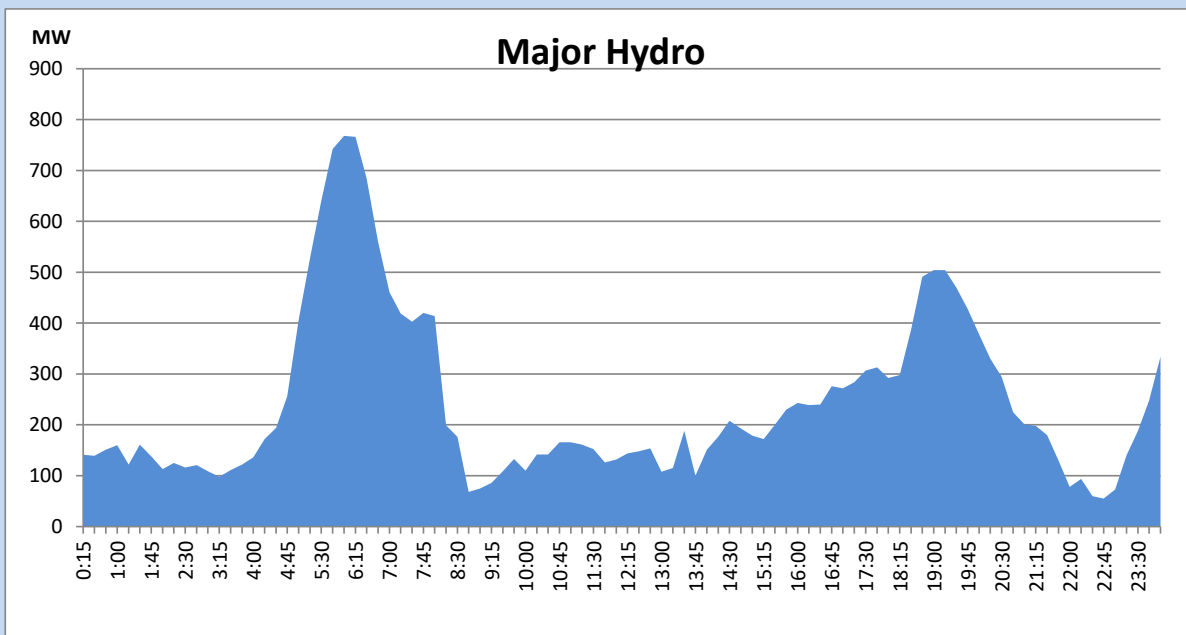
IPP Oil Plant Generation during the Previous day

March 29, 2022



Major Hydro Generation during the Previous day

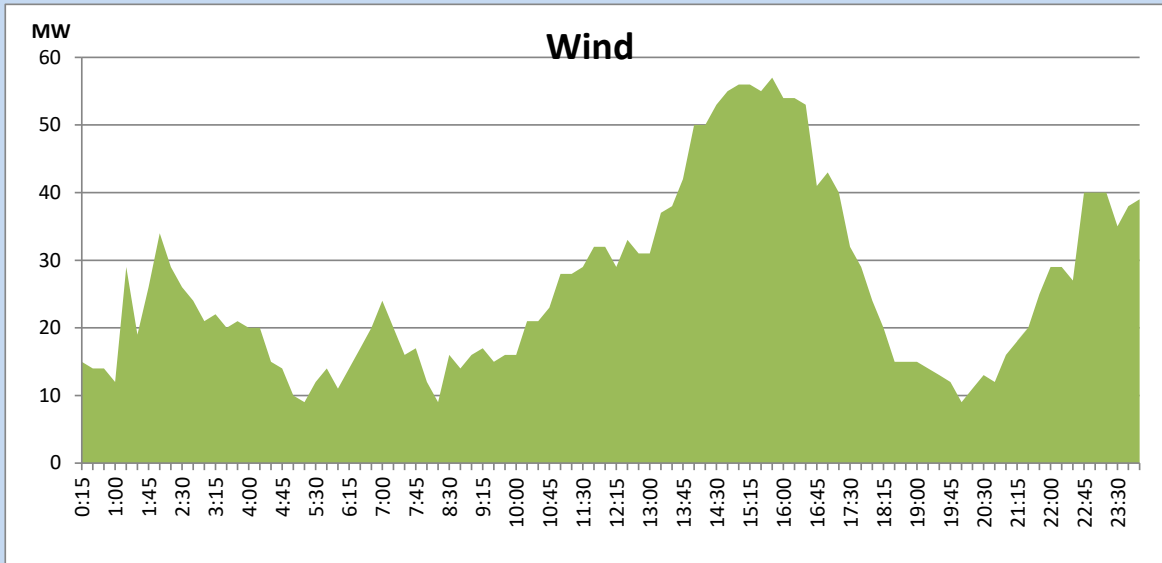
March 29, 2022



Wind Generation during the Previous day

March 29, 2022

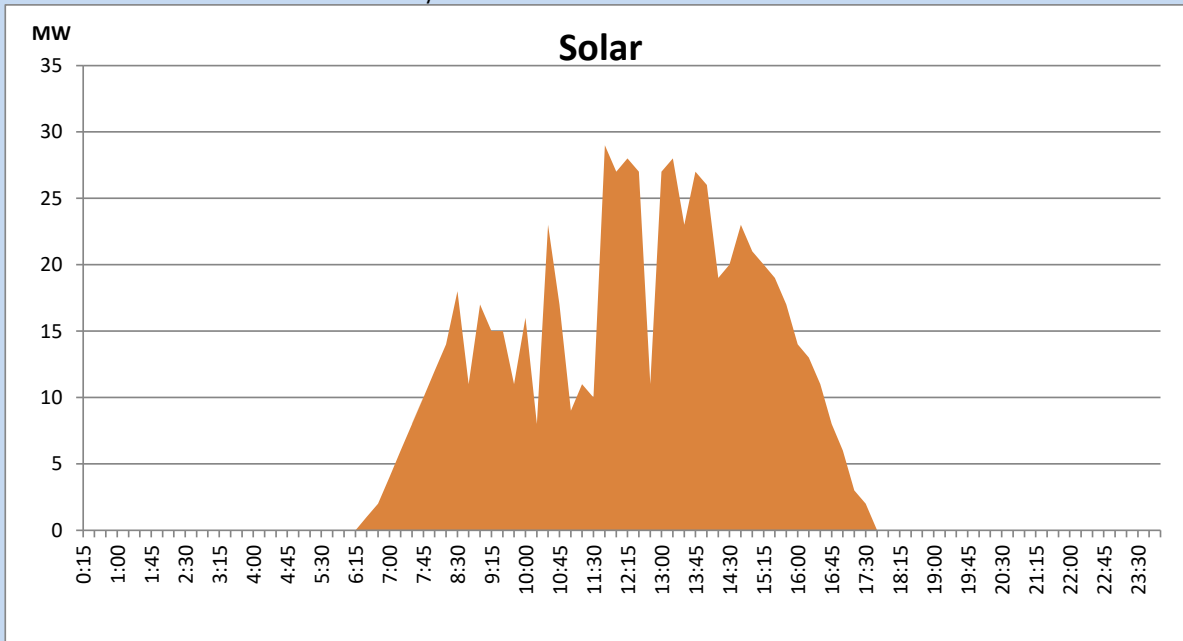
Based on Telemetered Power Stations only



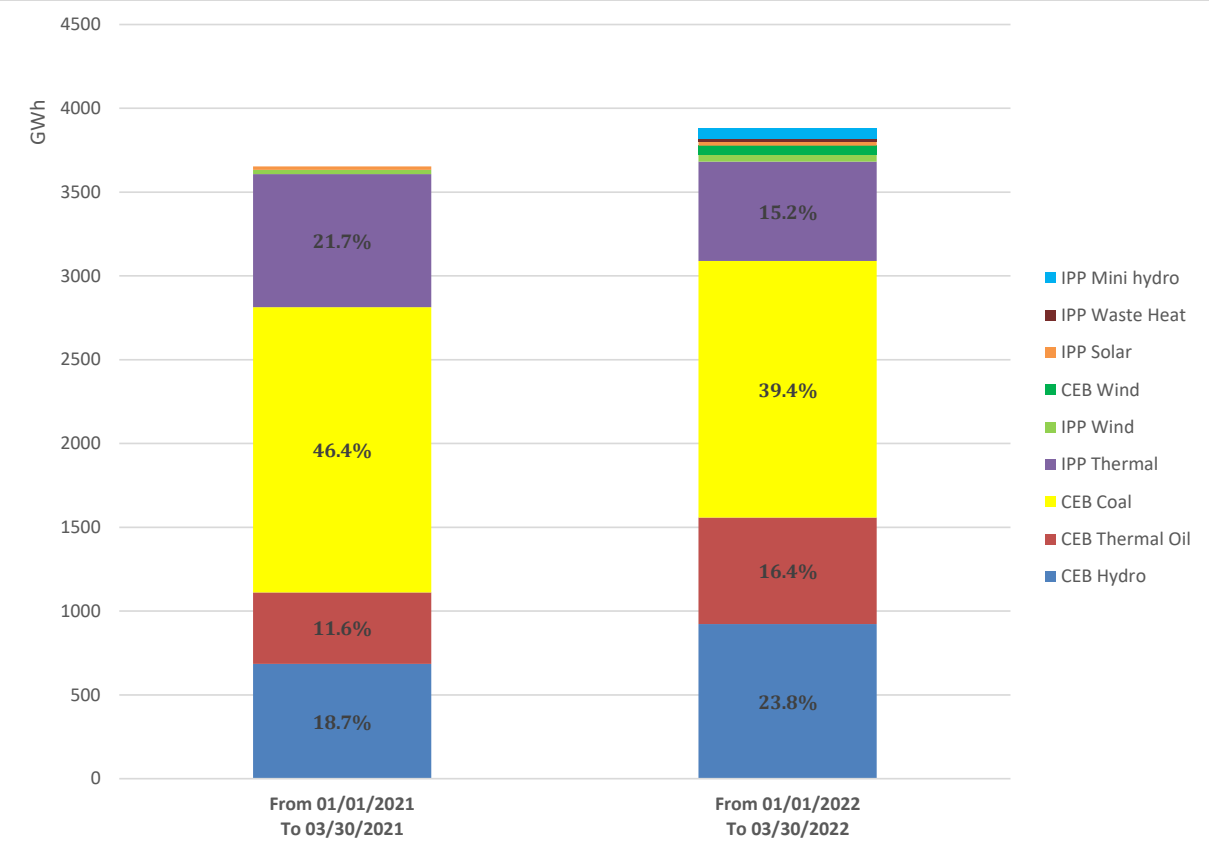
Solar Generation during the Previous day

March 29, 2022

Based on Telemetered Power Stations only



Cumulative Dispatch Comparison with Last Year



Thermal Plant Fuel types

Power Station	Primary Fuel
CEB Thermal	
Sapugaskanda 1	Heavy Fuel
Sapugaskanda 2	Heavy Fuel
Kelanitissa Small Gas Turbines	Auto Diesel
GT 7 - Kelanitissa	Auto Diesel
Kelanitissa CCY	Naphtha & Diesel
Lakvijaya 1	Coal
Lakvijaya 2	Coal
Lakvijaya 3	Coal
Uthuru Janani	Heavy Fuel
Barge CEB	Heavy Fuel

Power Station	Primary Fuel
Private Thermal	
Sojitz - Kelanitissa	Auto Diesel
West Coast	Heavy Fuel

Major Incidents during the day -as reported by CEB morning of

March 31, 2022

- 1) Rotational manual load shedding was carried out from 08:00hrs to 24:00hrs.
- 2)SPS-B plant made forced shutdown at 06:29hrs and SPS-A plant made forced shutdown at 06:53hrs due to lack of fuel.
- 3)WCP made forced shutdown at 08:47 hrs due to lack of fuel.
- 4)Sojitz made forced shutdown at 10:14 hrs due to lack of fuel.