

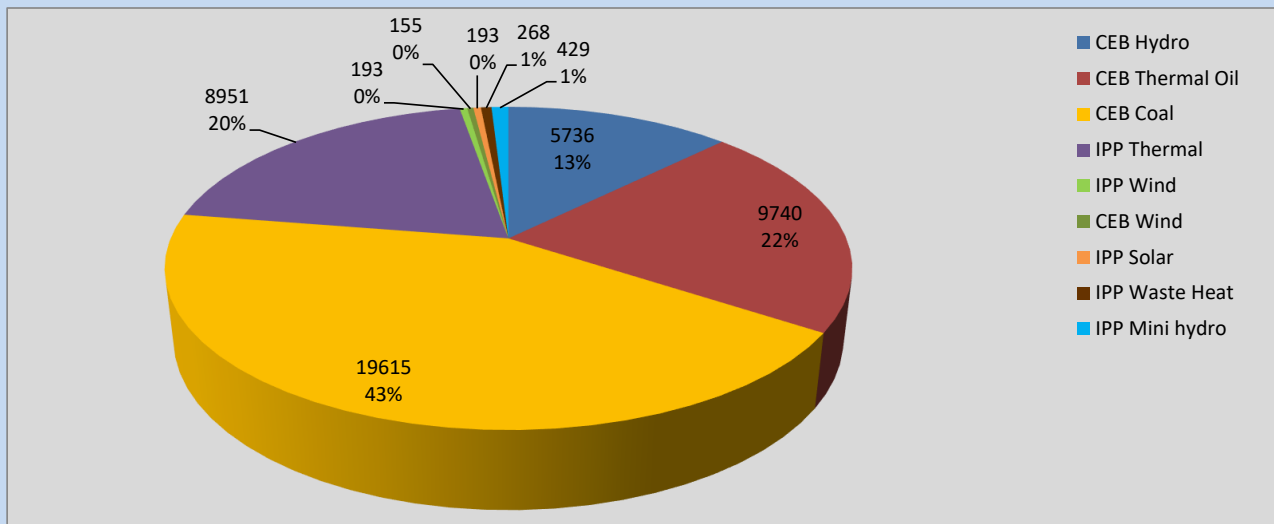
Generation and Reservoirs Statistics

March 28, 2022



PUBLIC UTILITIES COMMISSION OF SRI LANKA

Daily Generation Mix in MWh



Total Generation **45,420 MWh**

Note: Above data is excluding contribution from Roof Top Solar, 1MW Solar and certain Mini Hydro plants

Cumulative Dispatch

Note: Following data is Excluding contribution from Roof Top Solar, 1MW solar and Mini Hydro plants

For Current Month

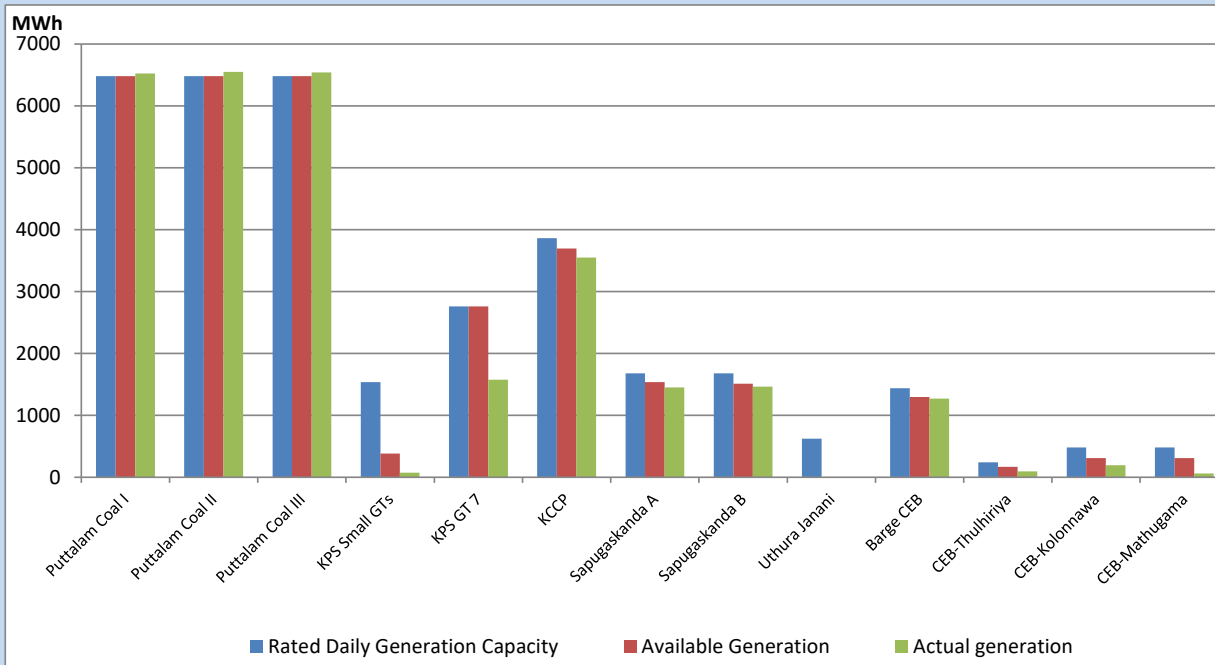
Category	Dispatch (GWh)	Percentage
CEB Hydro	231.67	18.73%
CEB Thermal Oil	208.68	16.87%
CEB Coal	548.07	44.30%
IPP Thermal	189.21	15.30%
SPP Wind	13.19	1.07%
CEB Wind	17.89	1.45%
SPP Solar	7.43	0.60%
SPP Solid Waste	6.16	0.50%
Mini Hydro	14.77	1.19%
Total	1,237.07	

For Current Year

Category	Dispatch (GWh)	Percentage
CEB Hydro	909.5	23.93%
CEB Thermal Oil	620.9	16.34%
CEB Coal	1,491.6	39.25%
IPP Thermal	580.6	15.28%
SPP Wind	41.3	1.09%
CEB Wind	52.1	1.37%
SPP Solar	22.7	0.60%
SPP Solid Waste	17.3	0.45%
Mini Hydro	64.5	1.70%
Total	3,800.3	

CEB owned Thermal Plant Dispatch

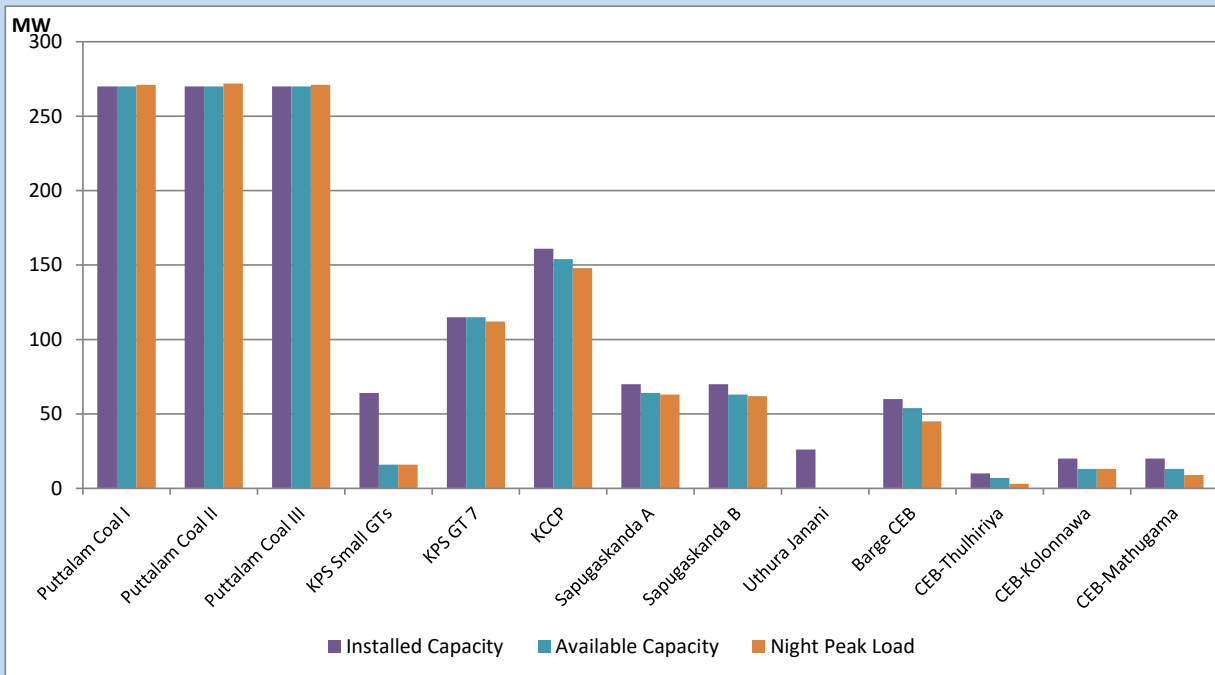
March 28, 2022



Available Generation is estimated based on plant availability at 6.00am on

March 29, 2022

CEB owned Thermal Plant Loading at the Night Peak



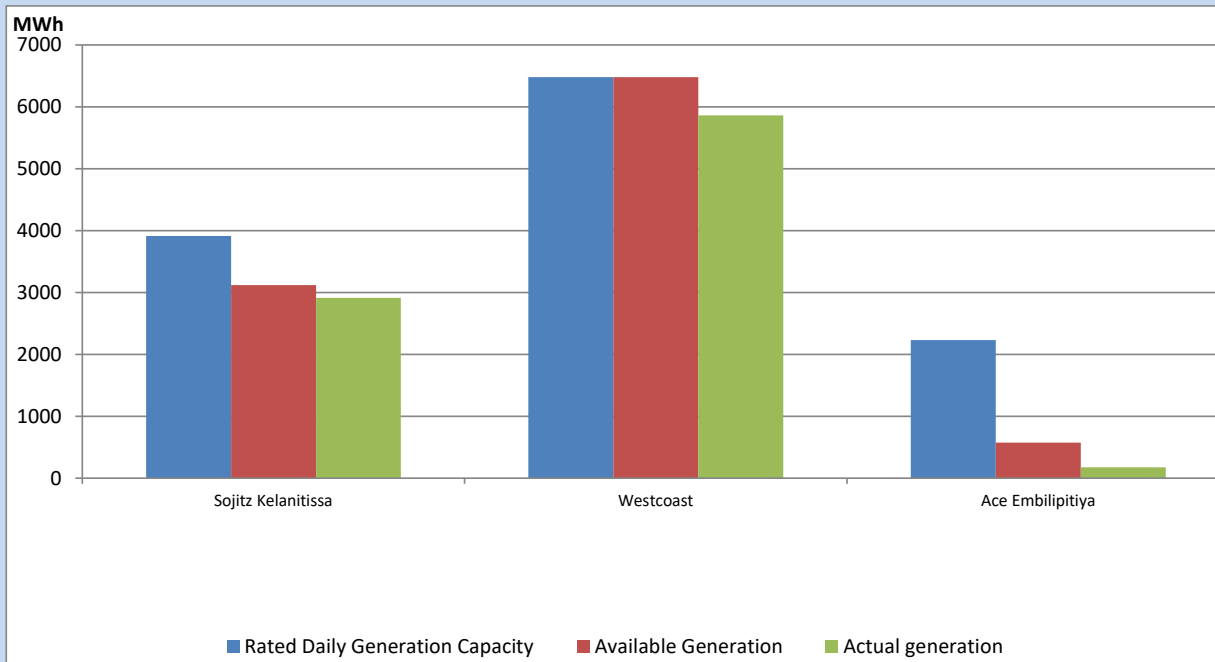
Note- Plant availability is recorded at 6.00 am on

March 29, 2022

IPP owned Thermal Plant Dispatch

March 28, 2022

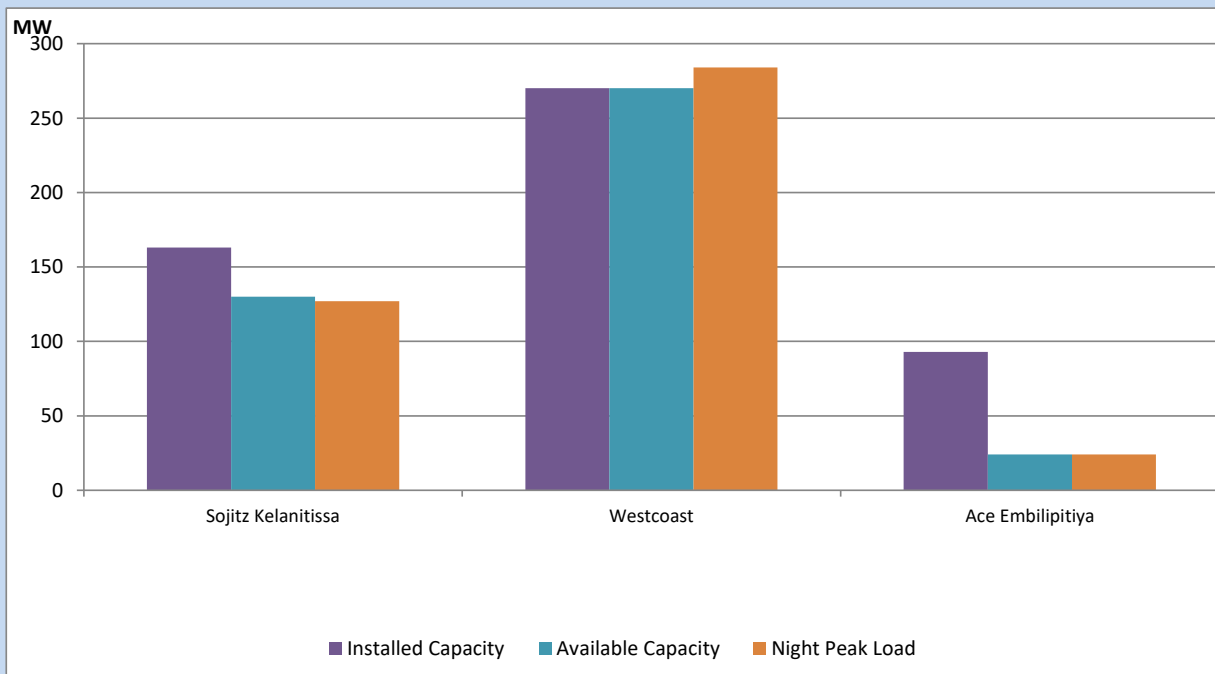
ACE Matara, Asia Power, V Power Pallekale, Vpower Galle, V Power Horana, Vpower Hambantota, Vpower Valachchena and Altaqa Mahiyanganaya are not available due to expiration of PPAs



Available Generation is estimated based on plant availability at 6.00am on

March 29, 2022

IPP owned Thermal Plant Loading at the Night Peak

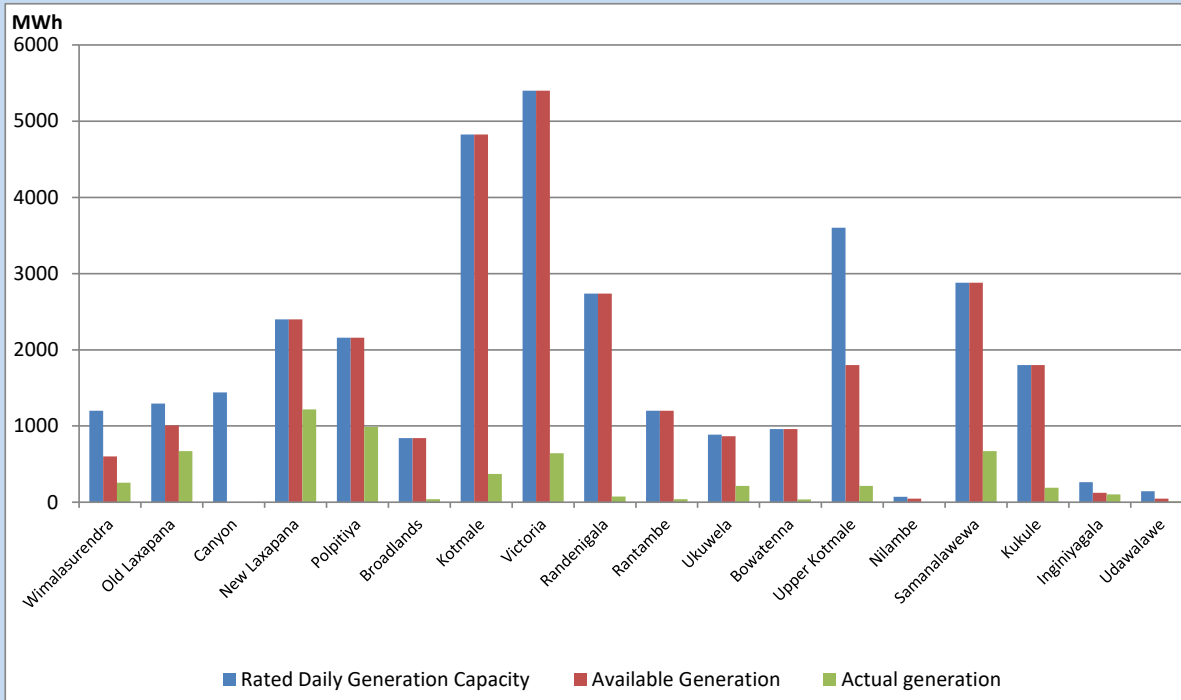


Note- Plant availability is recorded at 6.00 am on

March 29, 2022

Major Hydro Plant Dispatch

March 28, 2022

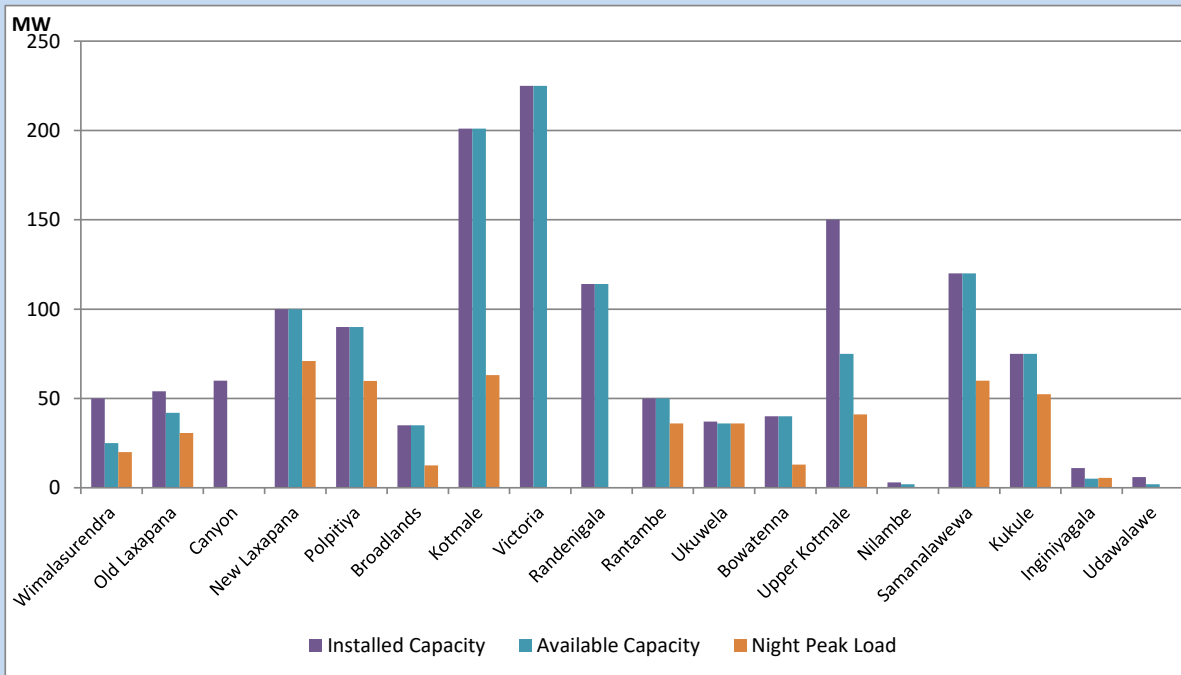


Available Generation is estimated based on plant availability at 6.00am on
Broadlands power plant is operating in the Commissioning Stage

March 29, 2022

Major Hydro Plant Loading at Night Peak

March 28, 2022



Note- Plant availability is recorded at 6.00 am on
Broadlands power plant is operating in the Commissioning Stage

March 29, 2022

Summary of Major Plant performance

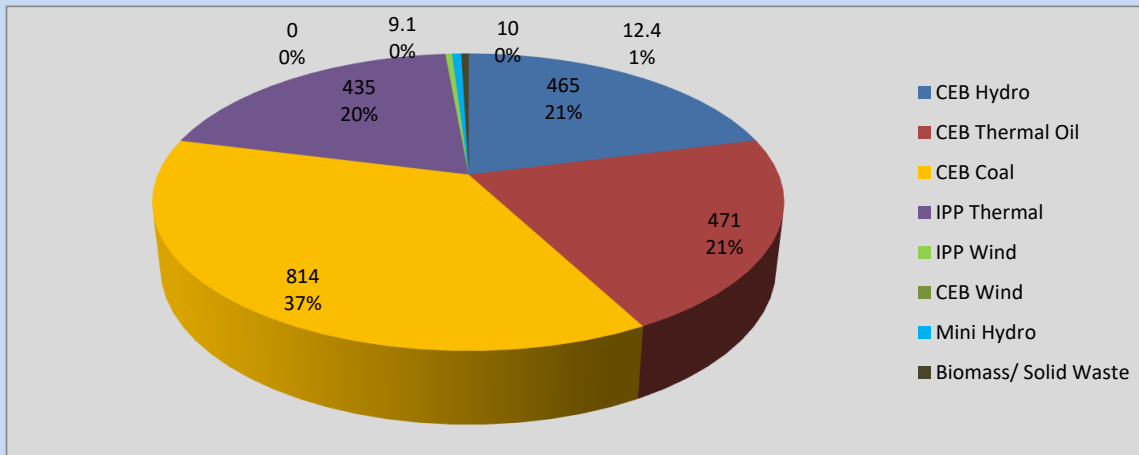
Plant	Installed Capacity	Plant Availability	Night peak Load	Plant Dispatch
	(MW)	(MW)	(MW)	(MWh)
Wimalasurendra	50	25	20	256
Old Laxapana	54	42	31	670
Canyon	60	0	0	0
New Laxapana	100	100	71	1,219
Polpitiya	90	90	60	986
Broadlands	35	35	13	39
Kotmale	201	201	63	370
Victoria	225	225	0	641
Randenigala	114	114	0	76
Rantambe	50	50	36	40
Ukuwela	37	36	36	213
Bowatenna	40	40	13	35
Upper Kotmale	150	75	41	215
Nilambe	3	2	0	0
Samanalawewa	120	120	60	669
Kukule	75	75	52	191
Inginiyagala	11	5	6	104
Udawalawe	6	2	0	12
Puttalam Coal I	270	270	271	6,523
Puttalam Coal II	270	270	272	6,551
Puttalam Coal III	270	270	271	6,541
KPS Small GTs	64	16	16	76
KPS GT 7	115	115	112	1,577
KCCP	161	154	148	3,551
Sapugaskanda A	70	64	63	1,451
Sapugaskanda B	70	63	62	1,463
Uthura Janani	26	0	0	0
Barge CEB	60	54	45	1,272
CEB-Thulhiriya	10	7	3	95
CEB-Kolonnawa	20	13	13	193
CEB-Mathugama	20	13	9	62
Sojitz Kelanitissa	163	130	127	2,914
West Coast	270	270	284	5,861
ACE Embilipitiya	93	24	24	176
Total	3,373	2,970	2,253	45,420

Plant availability is the availability recorded at 6 am on

March 29, 2022

Contribution to the Night Peak in MW

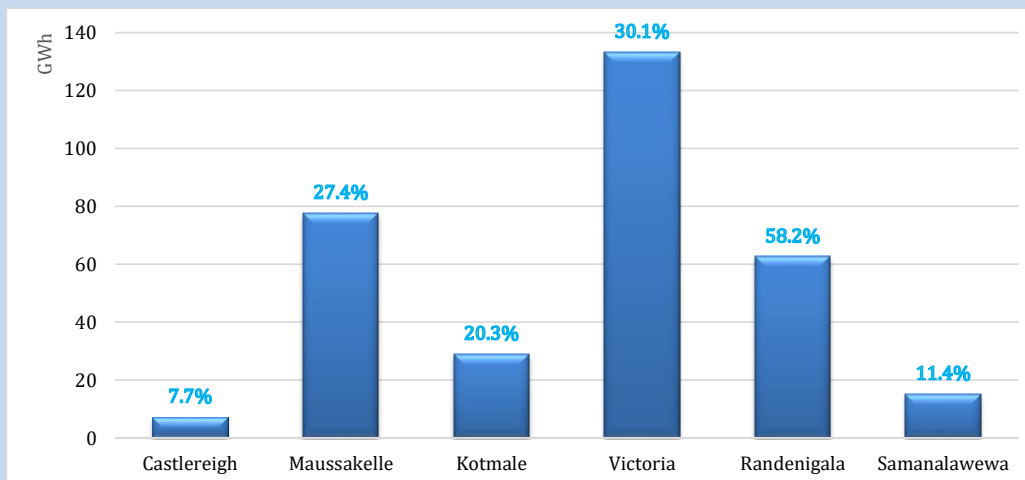
March 28, 2022



Night Peak*	2,216.5 MW
Day Peak	2,015.7 MW
Minimum Demand	1,507.8 MW

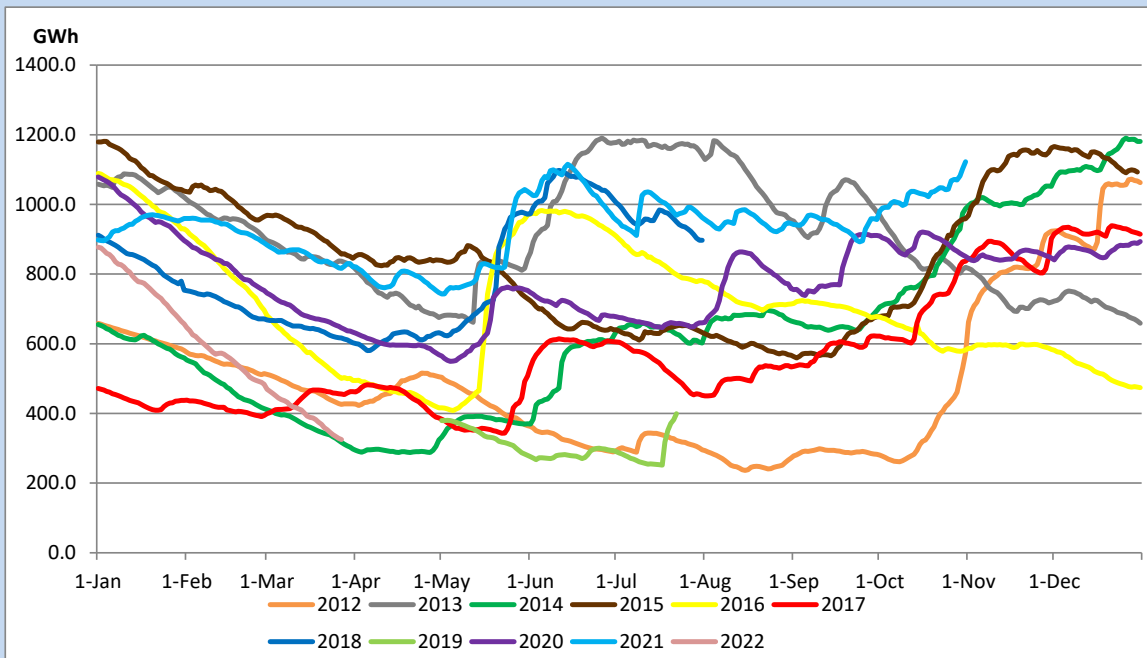
Above figures are excluding contribution from Roof Top Solar, 1MW solar, certain Wind plants and Mini Hydro plants

Reservoir Levels - as at 06.00 Hr on March 29, 2022



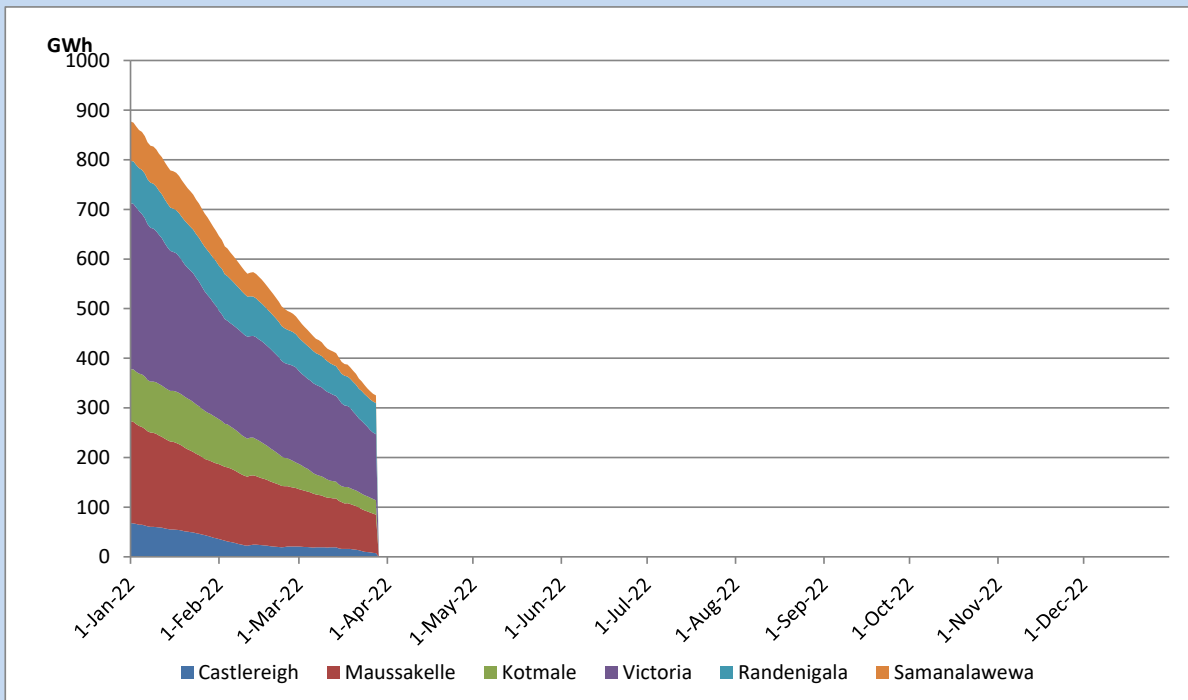
Total Reservoir Level	325.1 GWh
% of Total capacity	25.9%

Comparison of Total Reservoir Storage Levels with Past Years

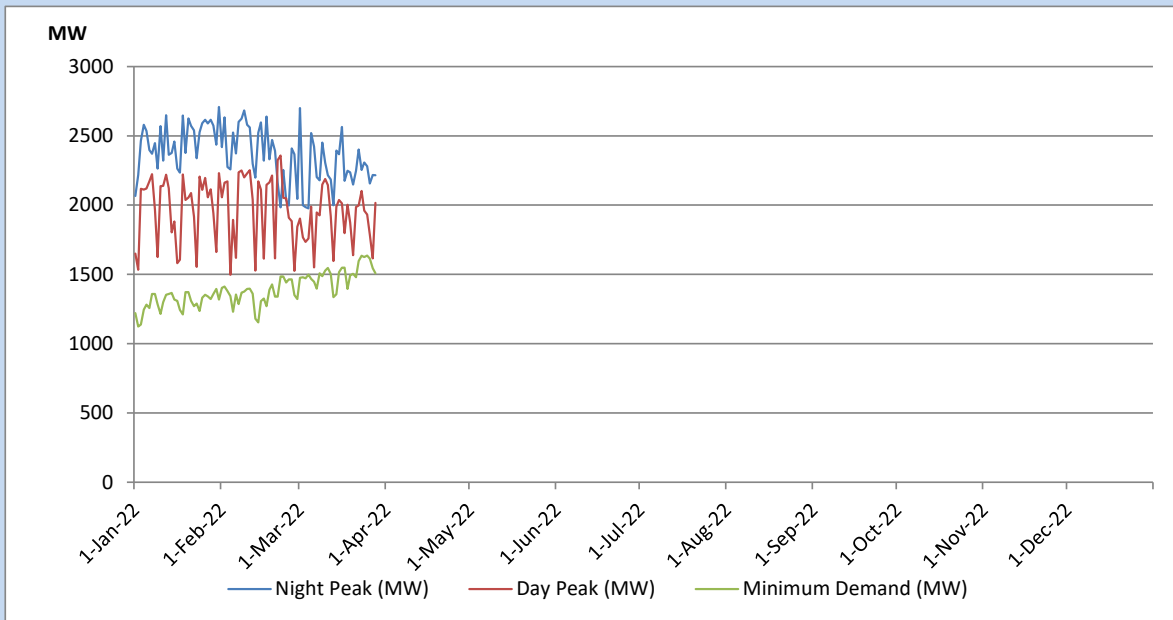


Data for 2018 and 2019 are only available for part of year.

Variation of Major Hydro Reservoir Levels in the current year (GWh)



Variation of Demand during the current year

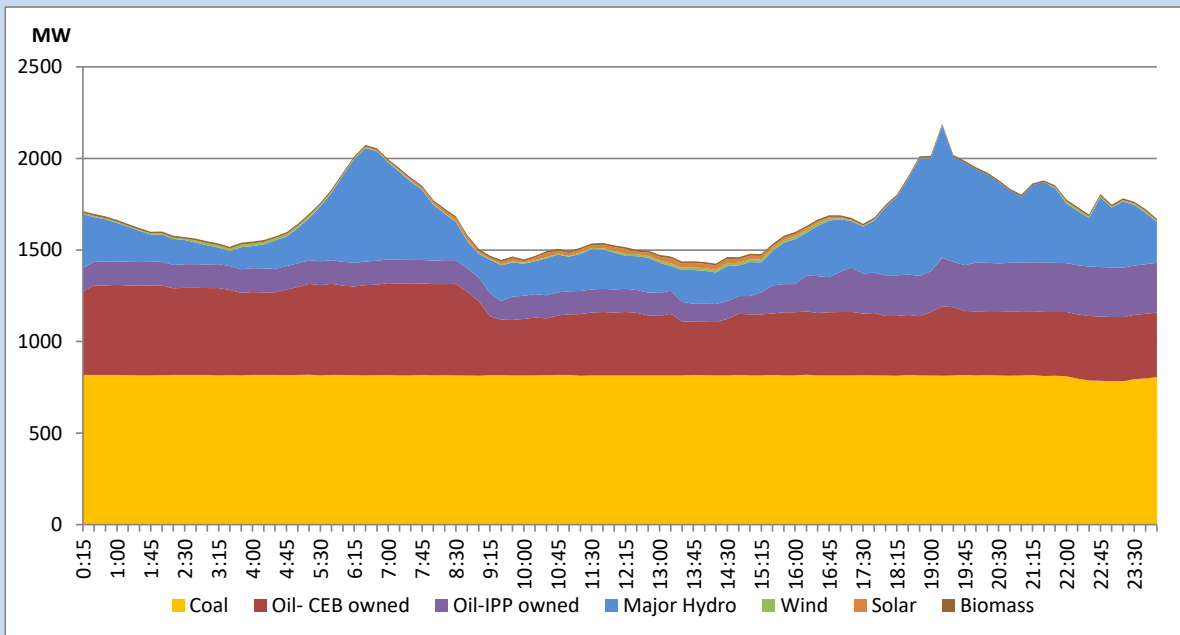


The above figures are excluding contribution from Roof Top Solar, 1MW solar, certain Wind plants and Mini Hydro plants

Daily Load Curve of the Previous day

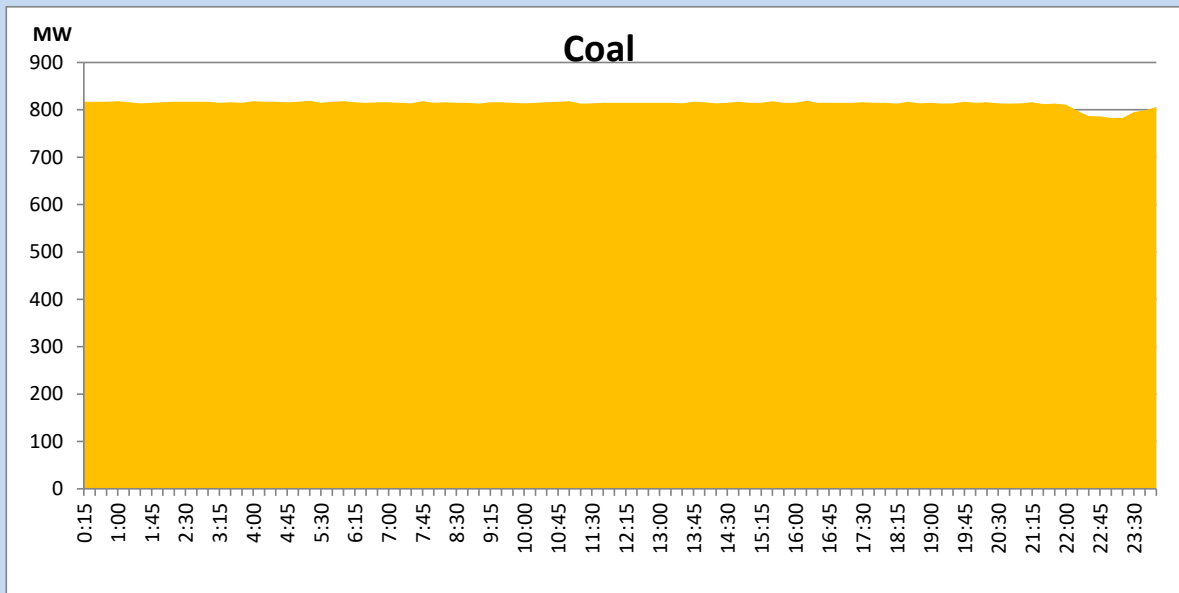
March 27, 2022

Solar and wind data is based on Telemetered Power Stations only



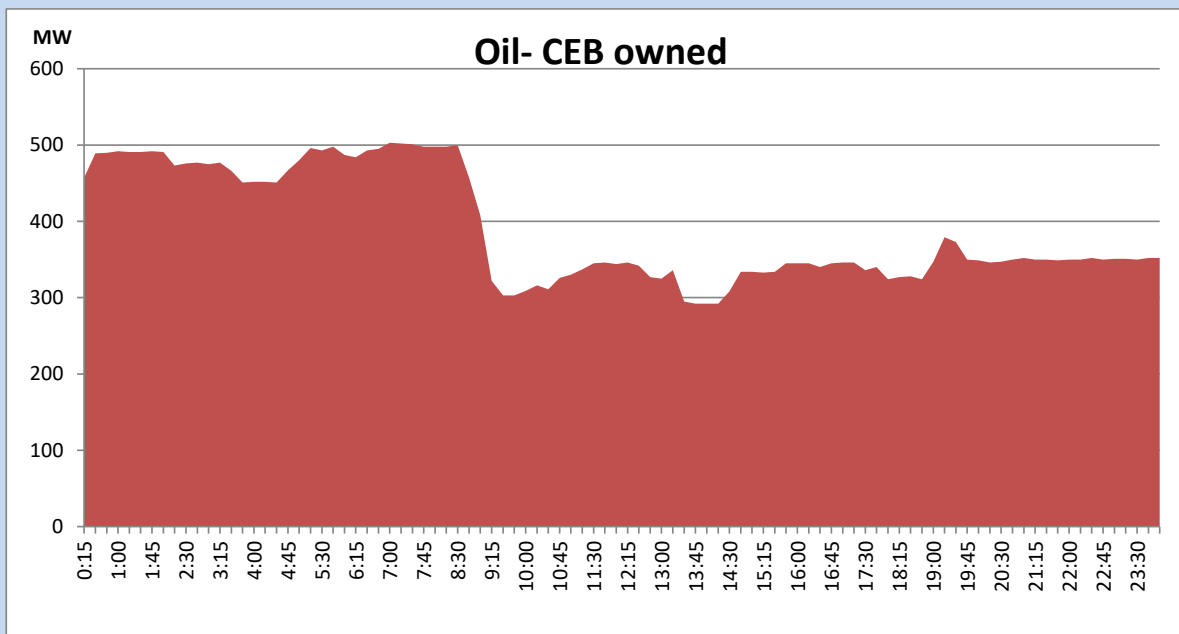
Coal Generation during the Previous day

March 27, 2022



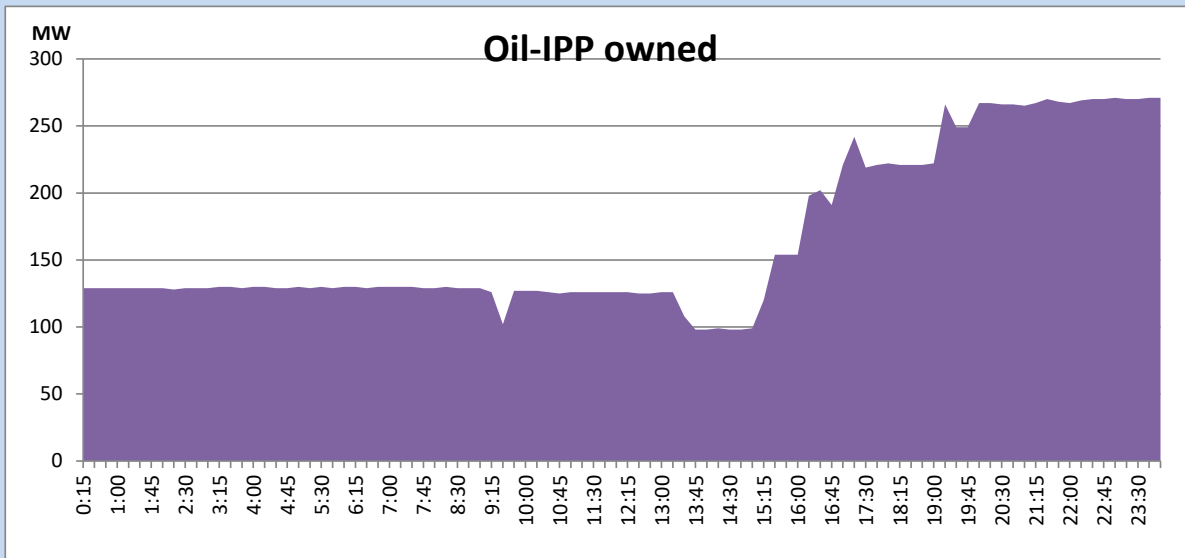
CEB Oil Plant Generation during the Previous day

March 27, 2022



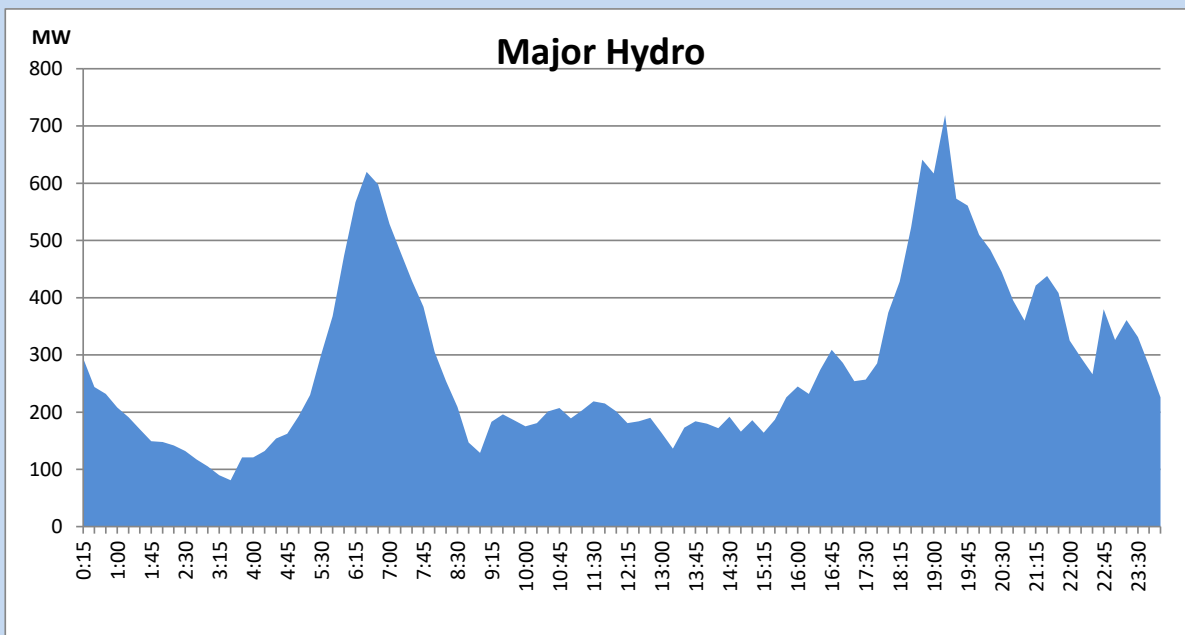
IPP Oil Plant Generation during the Previous day

March 27, 2022



Major Hydro Generation during the Previous day

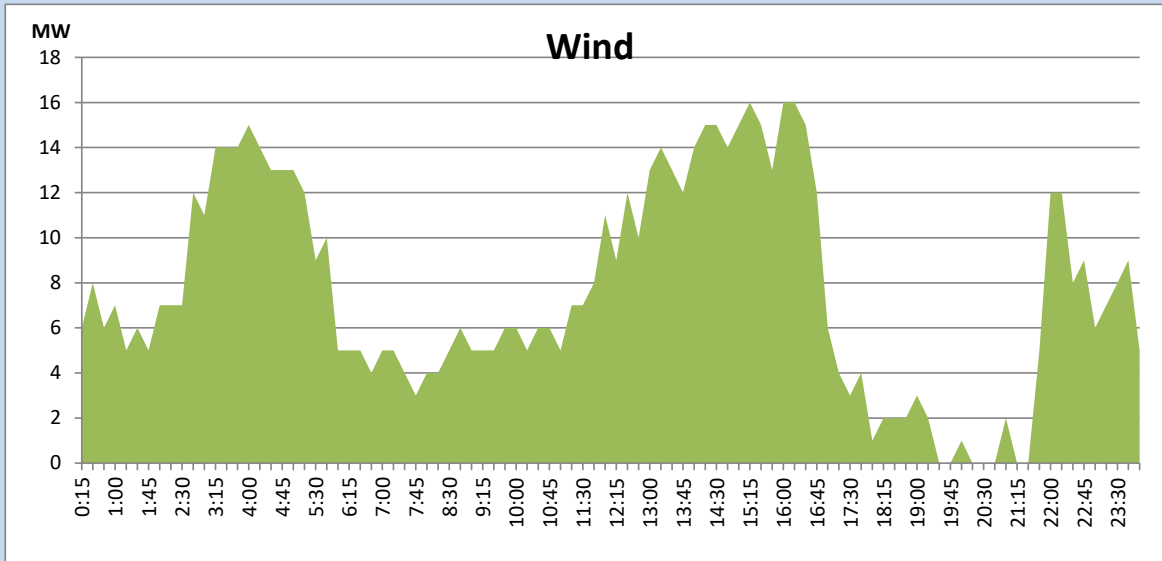
March 27, 2022



Wind Generation during the Previous day

March 27, 2022

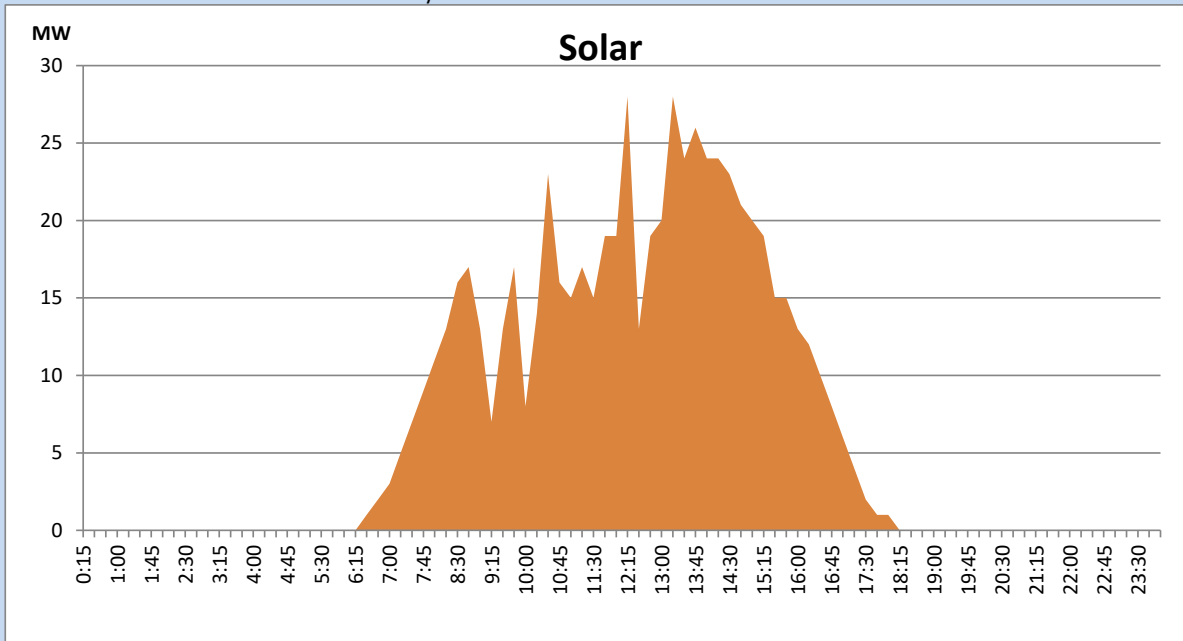
Based on Telemetered Power Stations only



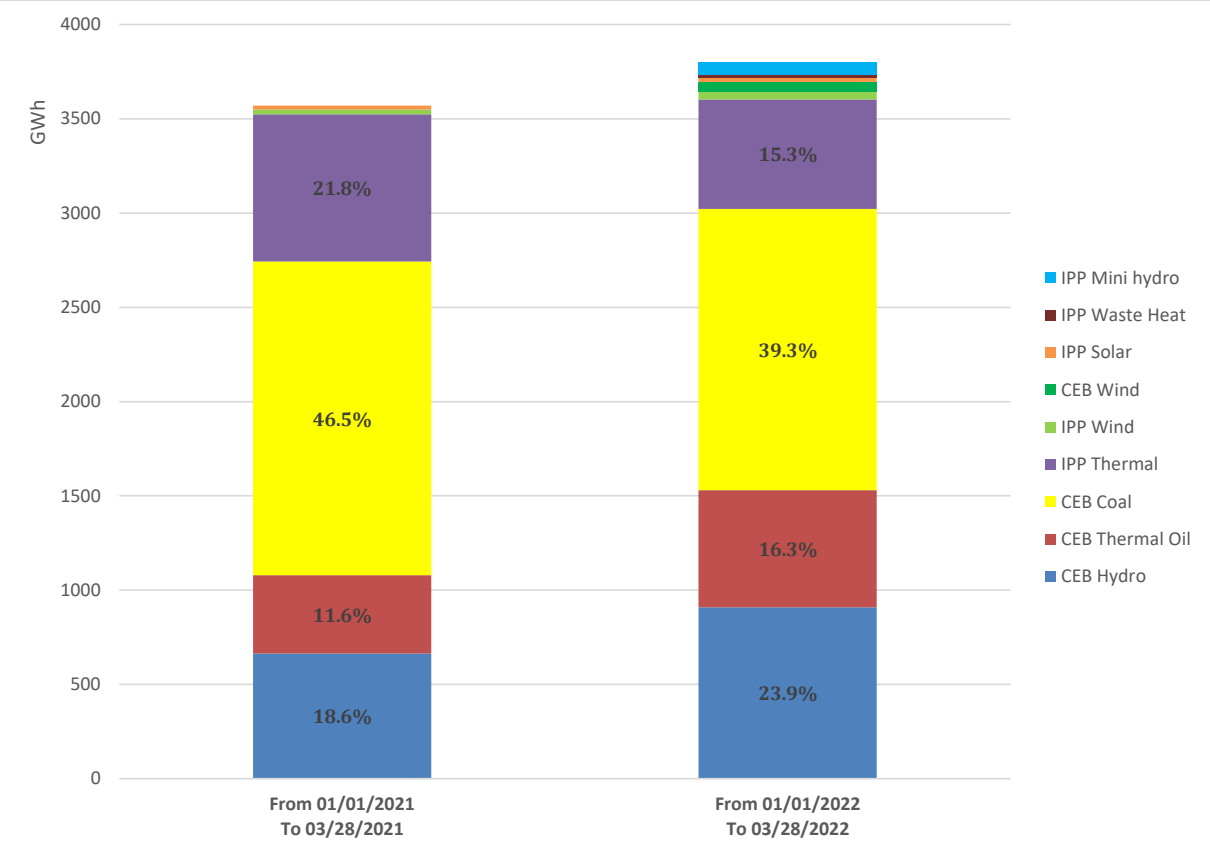
Solar Generation during the Previous day

March 27, 2022

Based on Telemetered Power Stations only



Cumulative Dispatch Comparison with Last Year



Thermal Plant Fuel types

Power Station	Primary Fuel
CEB Thermal	
Sapugaskanda 1	Heavy Fuel
Sapugaskanda 2	Heavy Fuel
Kelanitissa Small Gas Turbines	Auto Diesel
GT 7 - Kelanitissa	Auto Diesel
Kelanitissa CCY	Naphtha & Diesel
Lakvijaya 1	Coal
Lakvijaya 2	Coal
Lakvijaya 3	Coal
Uthuru Janani	Heavy Fuel
Barge CEB	Heavy Fuel

Power Station	Primary Fuel
Private Thermal	
Sojitz - Kelanitissa	Auto Diesel
West Coast	Heavy Fuel

Major Incidents during the day -as reported by CEB morning of

March 29, 2022

- 1) Rotational manual load shedding was carried out from 08:00hrs to 23:00hrs.
- 2) ACE Embilipitiya power plant 24 MW made available for commercial operation at 13:46hrs. First m/c synchronized at 14:01hrs and reached 24 MW at 18:37hrs .
- 3) Puttlam GSS all 132/33 T/Fs tripped at 17:40hrs due to the operation of standby E/F protection with receipt of E/F indication in 33kV feeder 01 (not tripped). All T/Fs and affected feeders were normalized by 18:34hrs.
- 4) Kesbewa 132/33 T/F 02 tripped at 19:32hrs due to the operation of differential protection. T/F yet to be energized.