

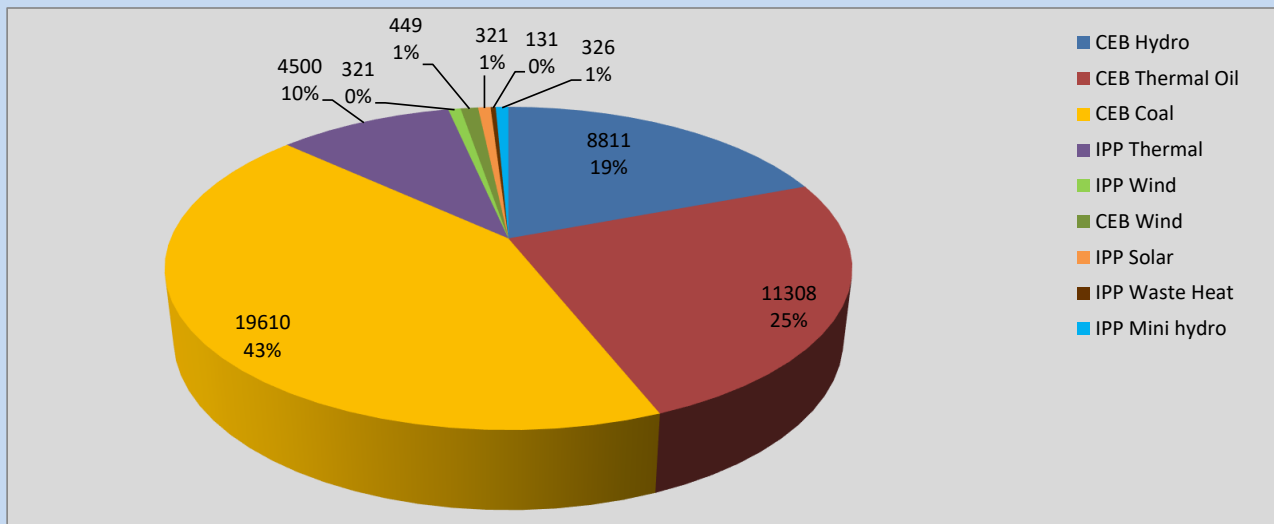
Generation and Reservoirs Statistics

March 24, 2022



PUBLIC UTILITIES COMMISSION OF SRI LANKA

Daily Generation Mix in MWh



Total Generation **45,740 MWh**

Note: Above data is excluding contribution from Roof Top Solar, 1MW Solar and certain Mini Hydro plants

Cumulative Dispatch

Note: Following data is Excluding contribution from Roof Top Solar, 1MW solar and Mini Hydro plants

For Current Month

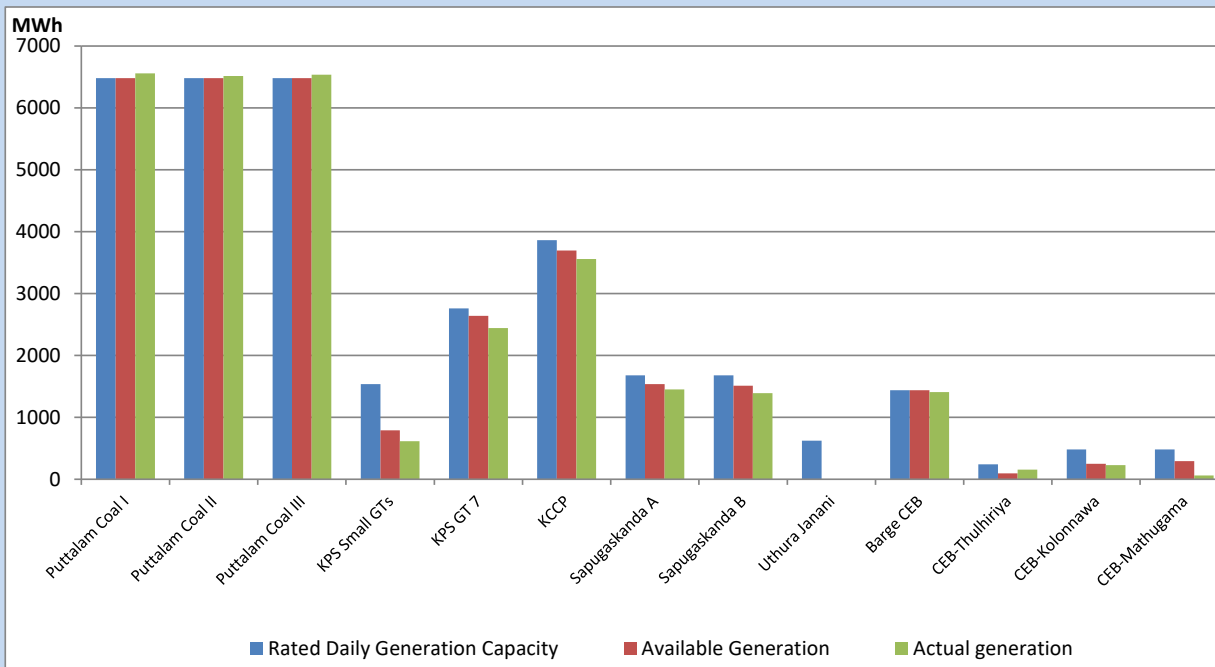
Category	Dispatch (GWh)	Percentage
CEB Hydro	201.09	18.95%
CEB Thermal Oil	166.23	15.66%
CEB Coal	469.67	44.25%
IPP Thermal	170.44	16.06%
SPP Wind	12.25	1.15%
CEB Wind	17.16	1.62%
SPP Solar	6.22	0.59%
SPP Solid Waste	5.20	0.49%
Mini Hydro	13.07	1.23%
Total	1,061.33	

For Current Year

Category	Dispatch (GWh)	Percentage
CEB Hydro	878.9	24.25%
CEB Thermal Oil	578.5	15.96%
CEB Coal	1,413.2	38.99%
IPP Thermal	561.9	15.50%
SPP Wind	40.4	1.11%
CEB Wind	51.4	1.42%
SPP Solar	21.5	0.59%
SPP Solid Waste	16.3	0.45%
Mini Hydro	62.8	1.73%
Total	3,624.6	

CEB owned Thermal Plant Dispatch

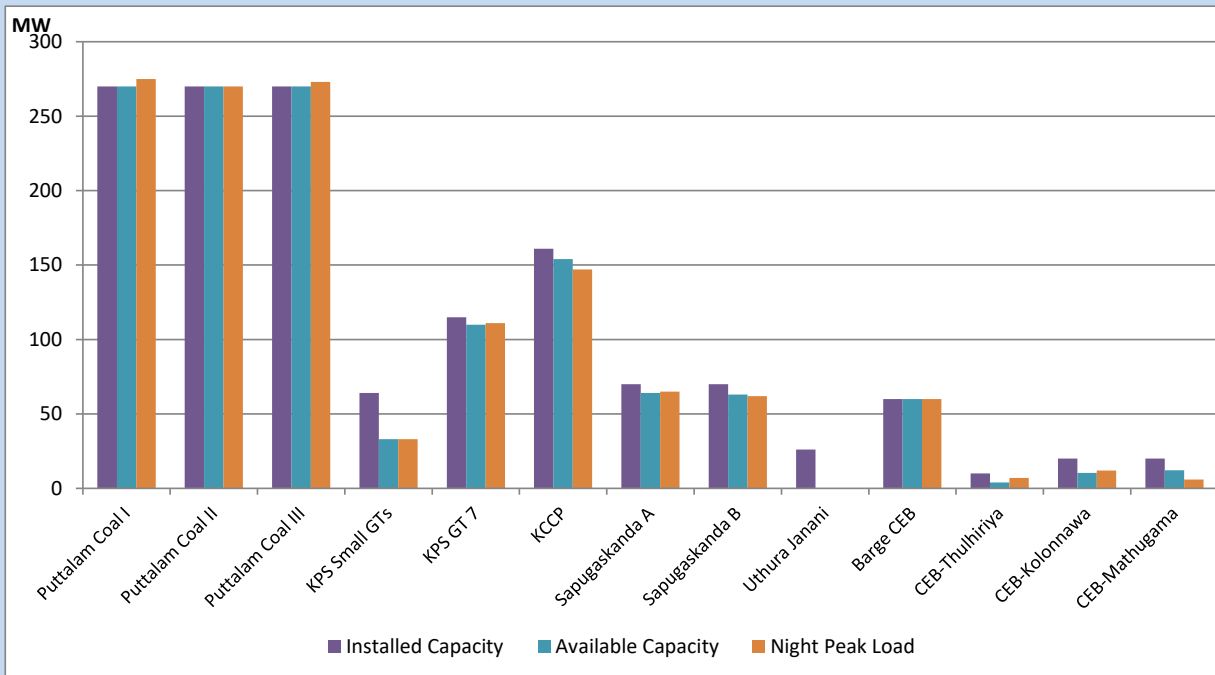
March 24, 2022



Available Generation is estimated based on plant availability at 6.00am on

March 25, 2022

CEB owned Thermal Plant Loading at the Night Peak



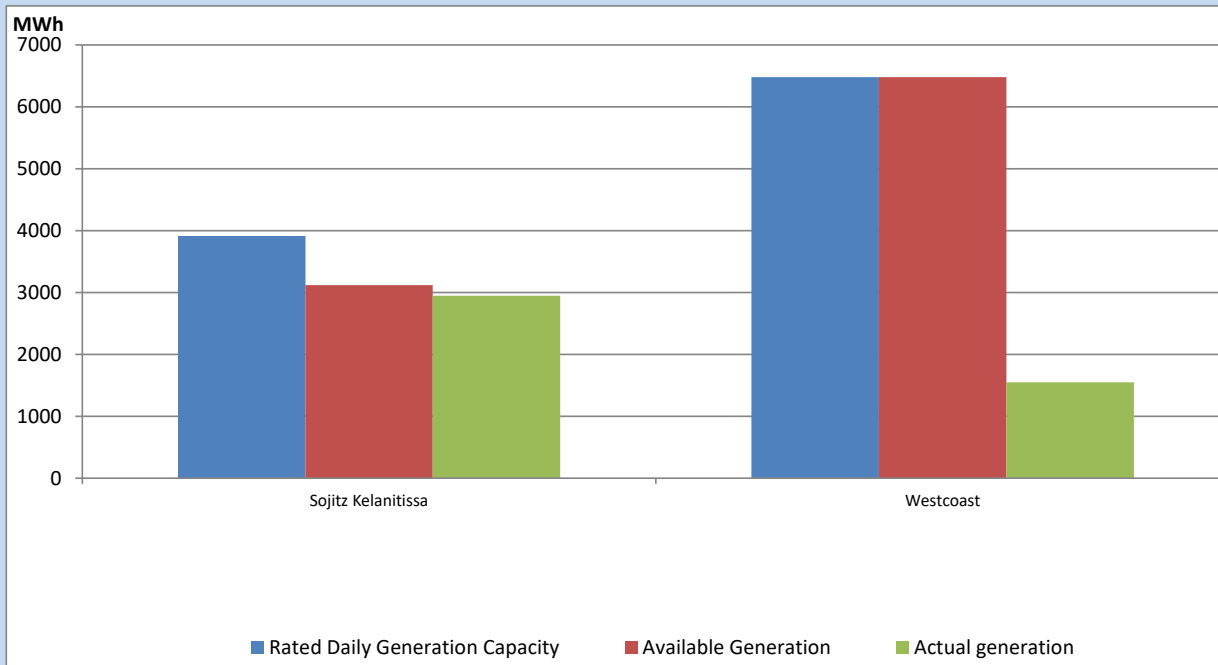
Note- Plant availability is recorded at 6.00 am on

March 25, 2022

IPP owned Thermal Plant Dispatch

March 24, 2022

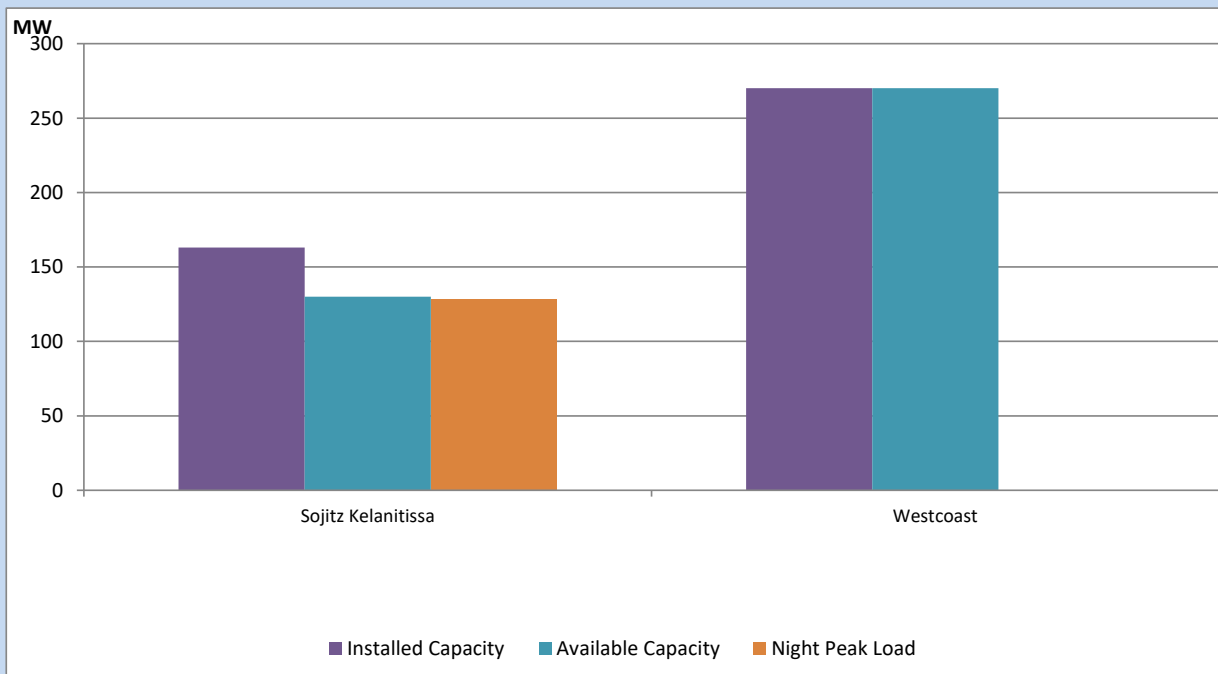
ACE Embilipitiya, ACE Matara, Asia Power, V Power Pallekale, Vpower Galle, V Power Horana, Vpower Hambantota, Vpower Valachchena and Altaqa Mahiyanganaya are not available due to expiration of PPAs



Available Generation is estimated based on plant availability at 6.00am on

March 25, 2022

IPP owned Thermal Plant Loading at the Night Peak

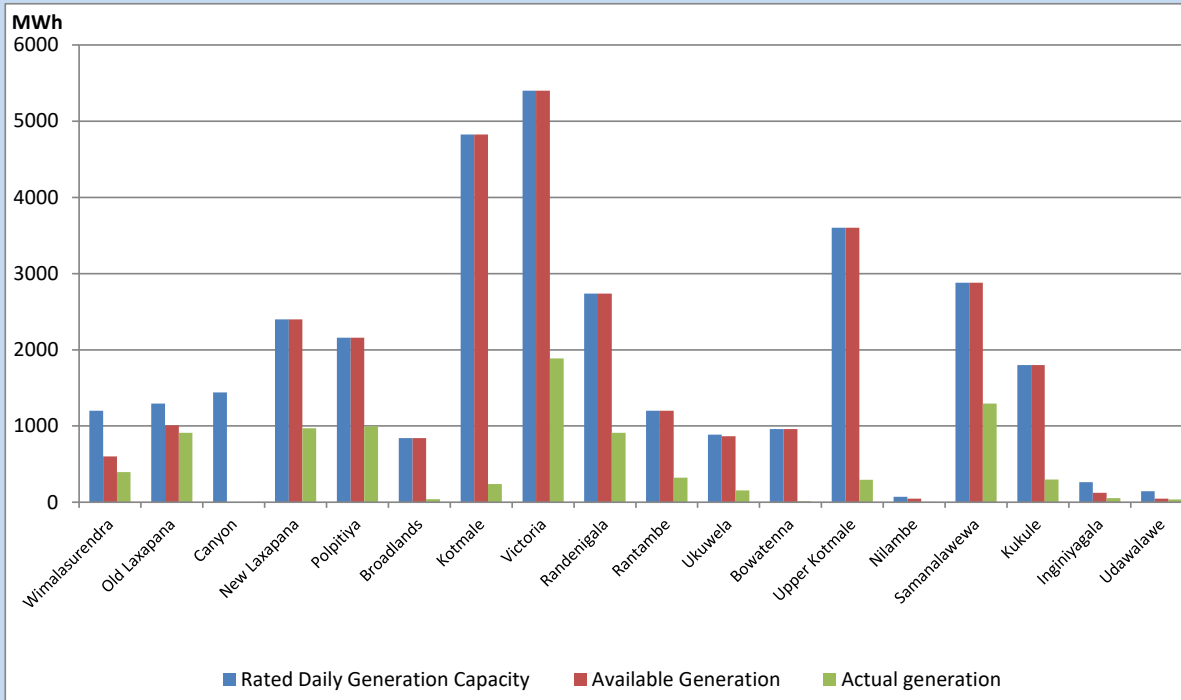


Note- Plant availability is recorded at 6.00 am on

March 25, 2022

Major Hydro Plant Dispatch

March 24, 2022

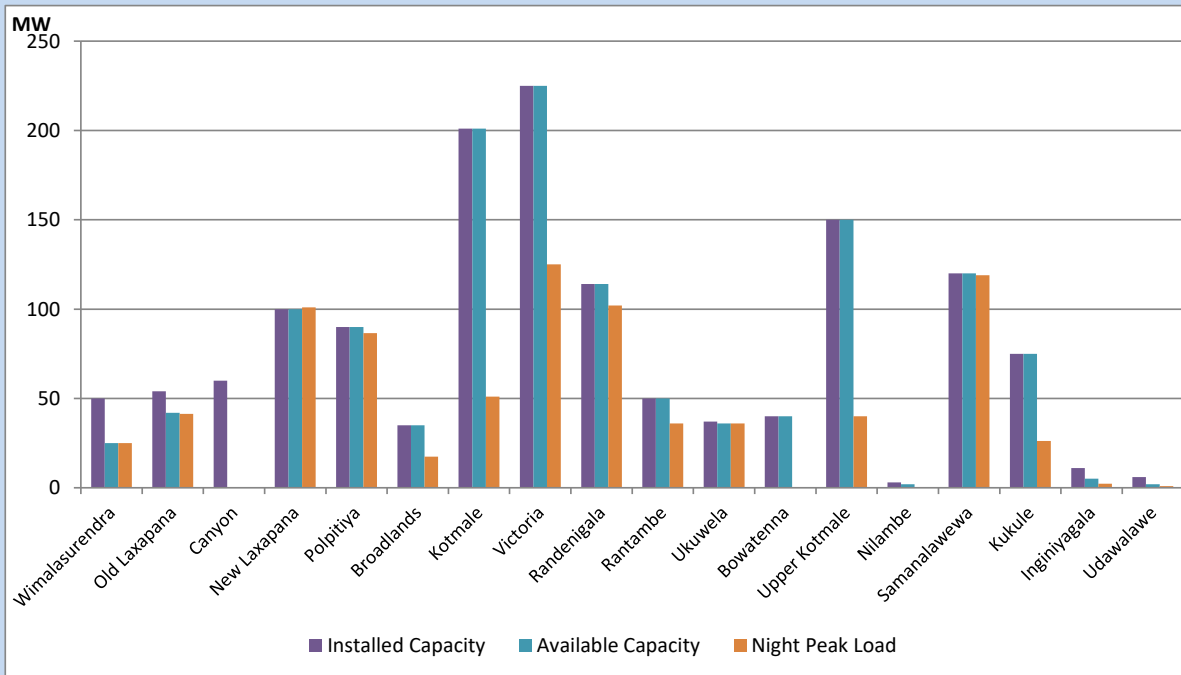


Available Generation is estimated based on plant availability at 6.00am on
Broadlands power plant is operating in the Commissioning Stage

March 25, 2022

Major Hydro Plant Loading at Night Peak

March 24, 2022



Note- Plant availability is recorded at 6.00 am on
Broadlands power plant is operating in the Commissioning Stage

March 25, 2022

Summary of Major Plant performance

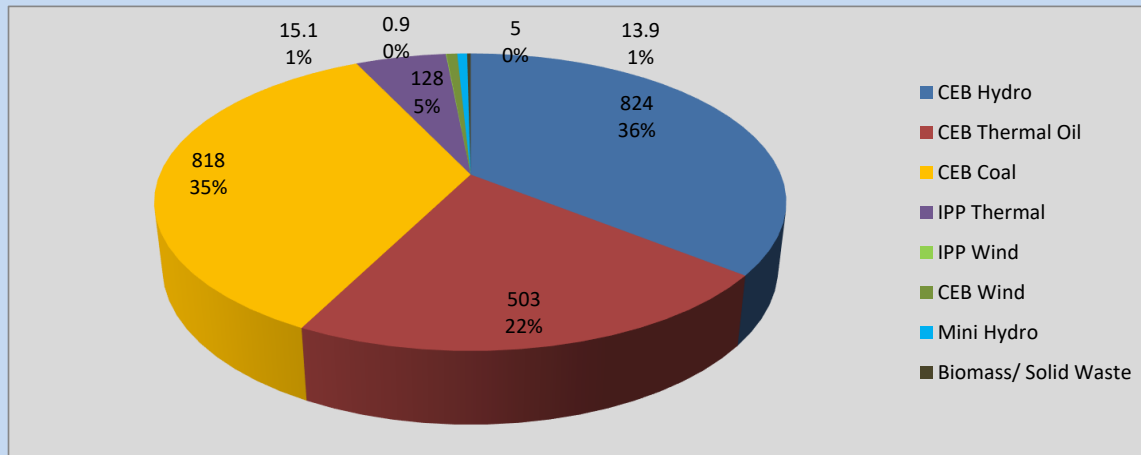
Plant	Installed Capacity	Plant Availability	Night peak Load	Plant Dispatch
	(MW)	(MW)	(MW)	(MWh)
Wimalasurendra	50	25	25	394
Old Laxapana	54	42	41	912
Canyon	60	0	0	0
New Laxapana	100	100	101	970
Polpitiya	90	90	87	996
Broadlands	35	35	17	41
Kotmale	201	201	51	240
Victoria	225	225	125	1,887
Randenigala	114	114	102	910
Rantambe	50	50	36	321
Ukuwela	37	36	36	154
Bowatenna	40	40	0	12
Upper Kotmale	150	150	40	294
Nilambe	3	2	0	3
Samanalawewa	120	120	119	1,293
Kukule	75	75	26	296
Inginiyagala	11	5	2	52
Udawalawe	6	2	1	36
Puttalam Coal I	270	270	275	6,560
Puttalam Coal II	270	270	270	6,514
Puttalam Coal III	270	270	273	6,536
KPS Small GTs	64	33	33	615
KPS GT 7	115	110	111	2,442
KCCP	161	154	147	3,558
Sapugaskanda A	70	64	65	1,450
Sapugaskanda B	70	63	62	1,390
Uthura Janani	26	0	0	0
Barge CEB	60	60	60	1,410
CEB-Thulhiriya	10	4	7	154
CEB-Kolonnawa	20	10	12	227
CEB-Mathugama	20	12	6	62
Sojitz Kelanitissa	163	130	128	2,949
West Coast	270	270	0	1,551
Total	3,280	3,033	2,294	45,740

Plant availability is the availability recorded at 6 am on

March 25, 2022

Contribution to the Night Peak in MW

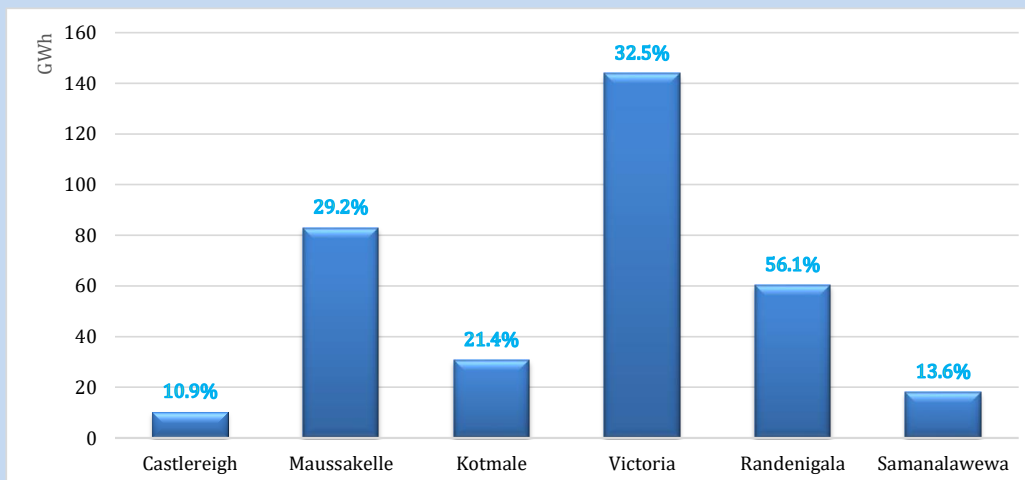
March 24, 2022



Night Peak*	2,307.5 MW
Day Peak	1,960.7 MW
Minimum Demand	1,625.9 MW

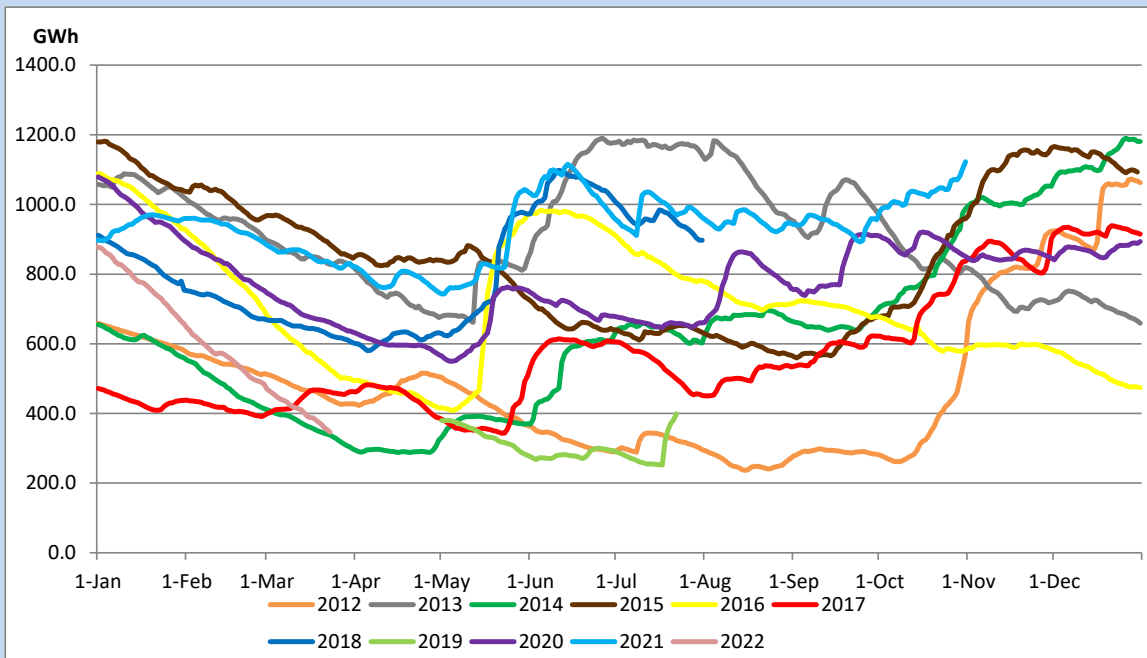
Above figures are excluding contribution from Roof Top Solar, 1MW solar, certain Wind plants and Mini Hydro plants

Reservoir Levels - as at 06.00 Hr on March 25, 2022



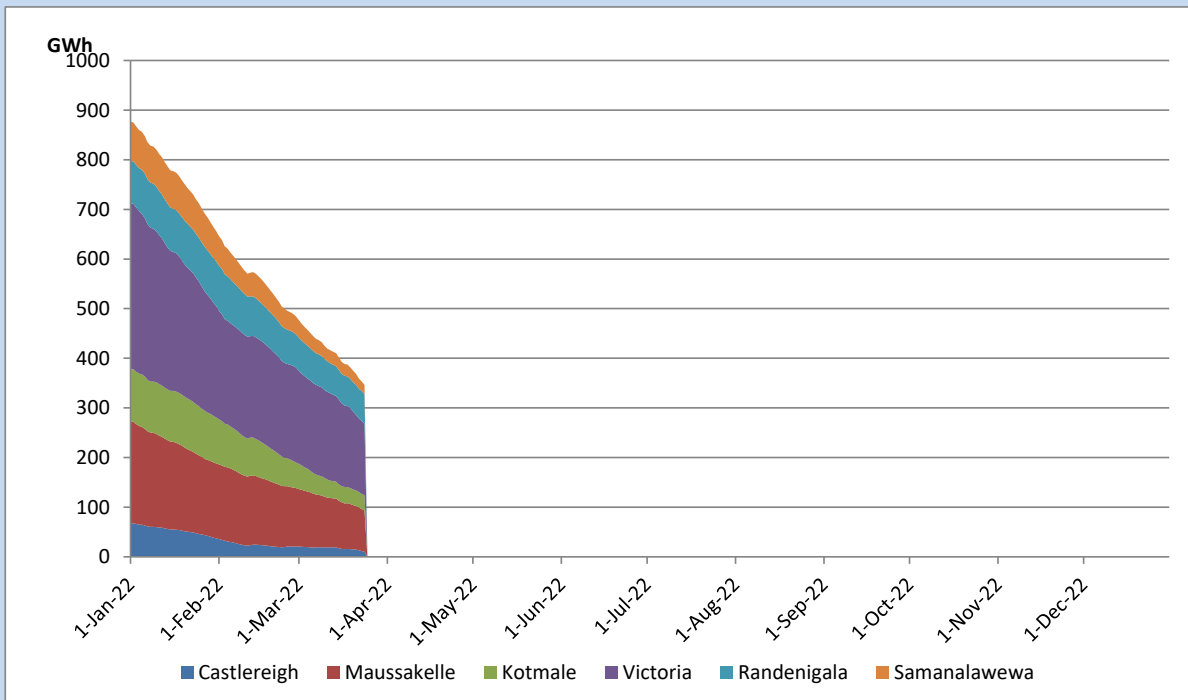
Total Reservoir Level	346.2 GWh
% of Total capacity	27.3%

Comparison of Total Reservoir Storage Levels with Past Years

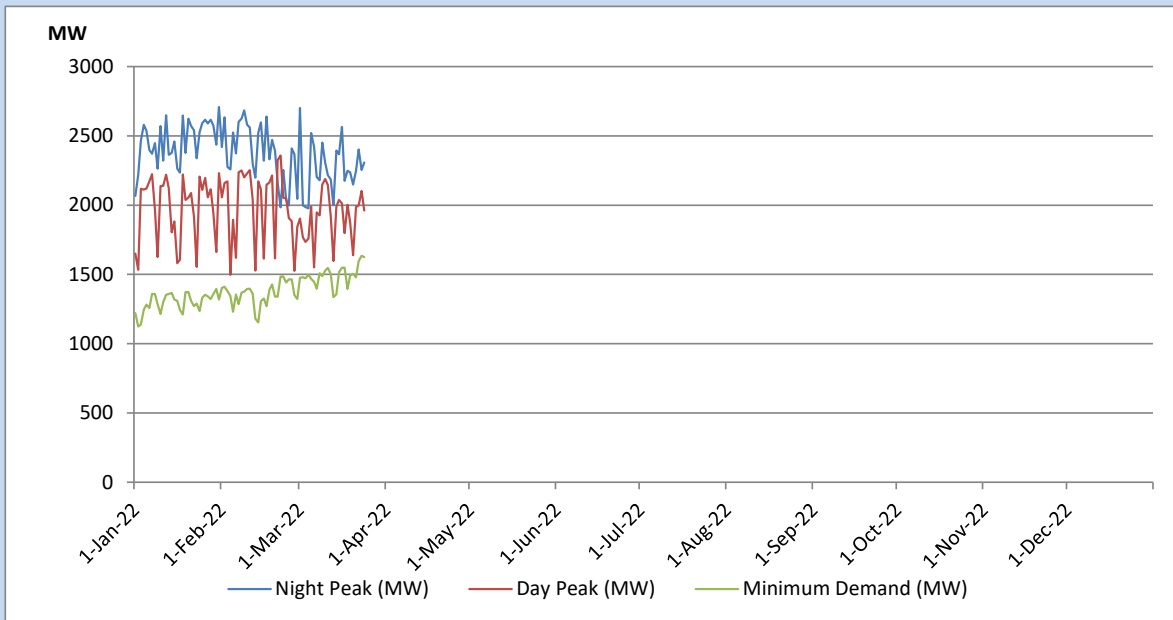


Data for 2018 and 2019 are only available for part of year.

Variation of Major Hydro Reservoir Levels in the current year (GWh)



Variation of Demand during the current year

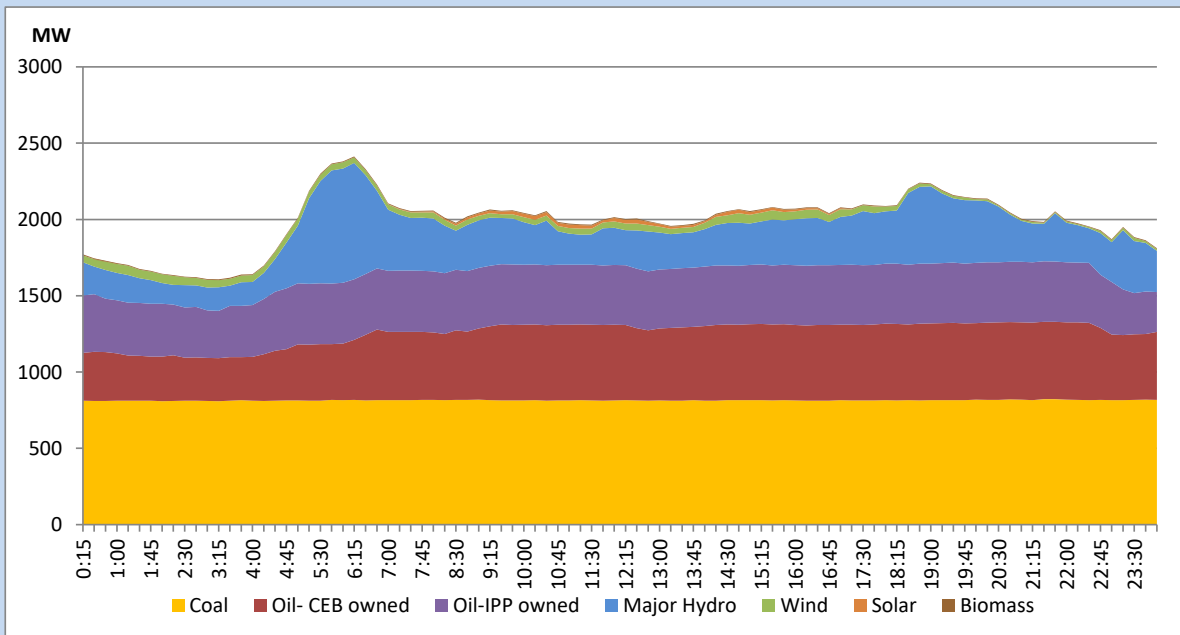


The above figures are excluding contribution from Roof Top Solar, 1MW solar, certain Wind plants and Mini Hydro plants

Daily Load Curve of the Previous day

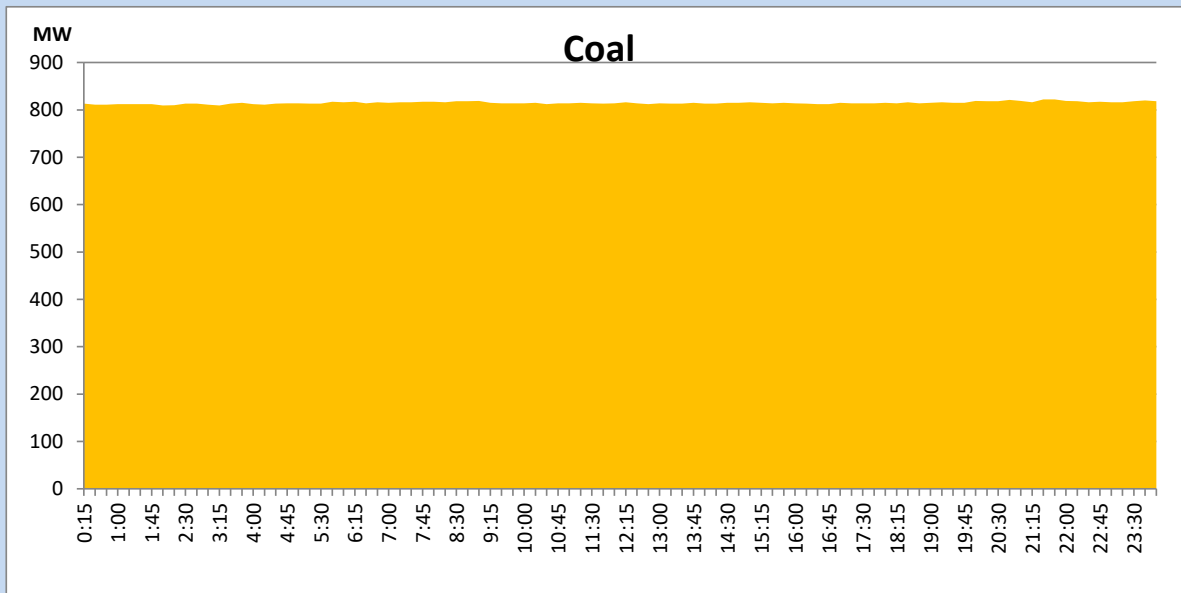
March 23, 2022

Solar and wind data is based on Telemetered Power Stations only



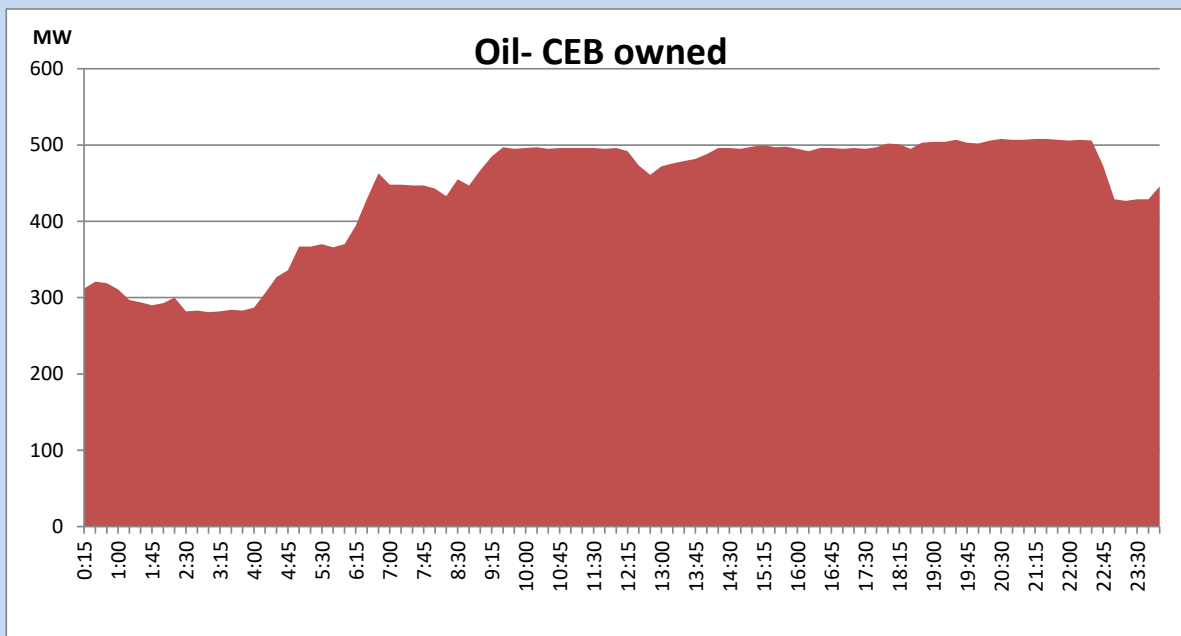
Coal Generation during the Previous day

March 23, 2022



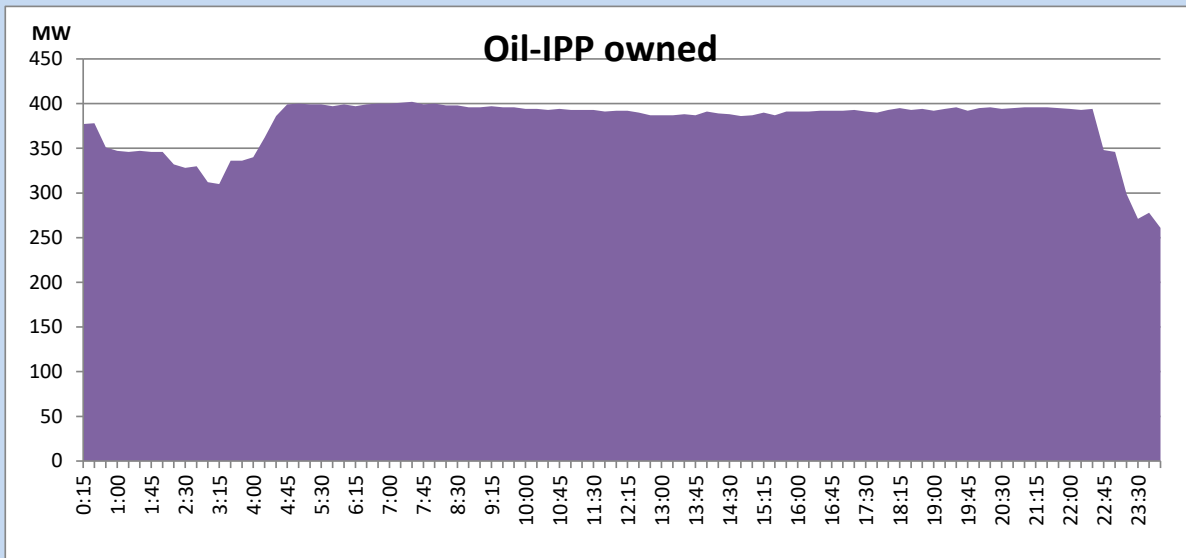
CEB Oil Plant Generation during the Previous day

March 23, 2022



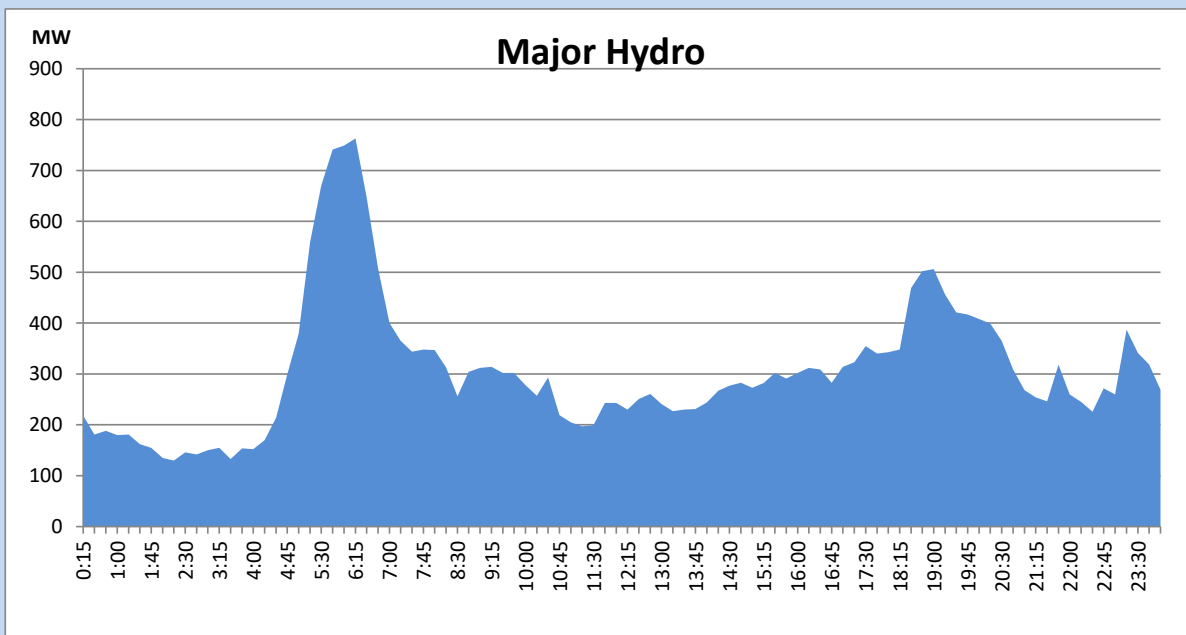
IPP Oil Plant Generation during the Previous day

March 23, 2022



Major Hydro Generation during the Previous day

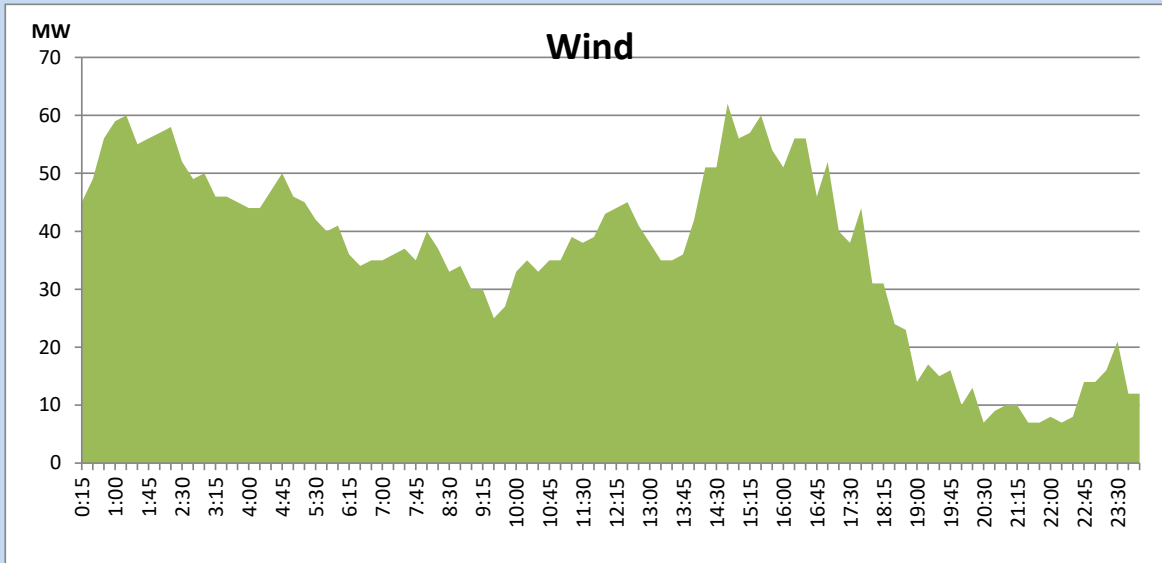
March 23, 2022



Wind Generation during the Previous day

March 23, 2022

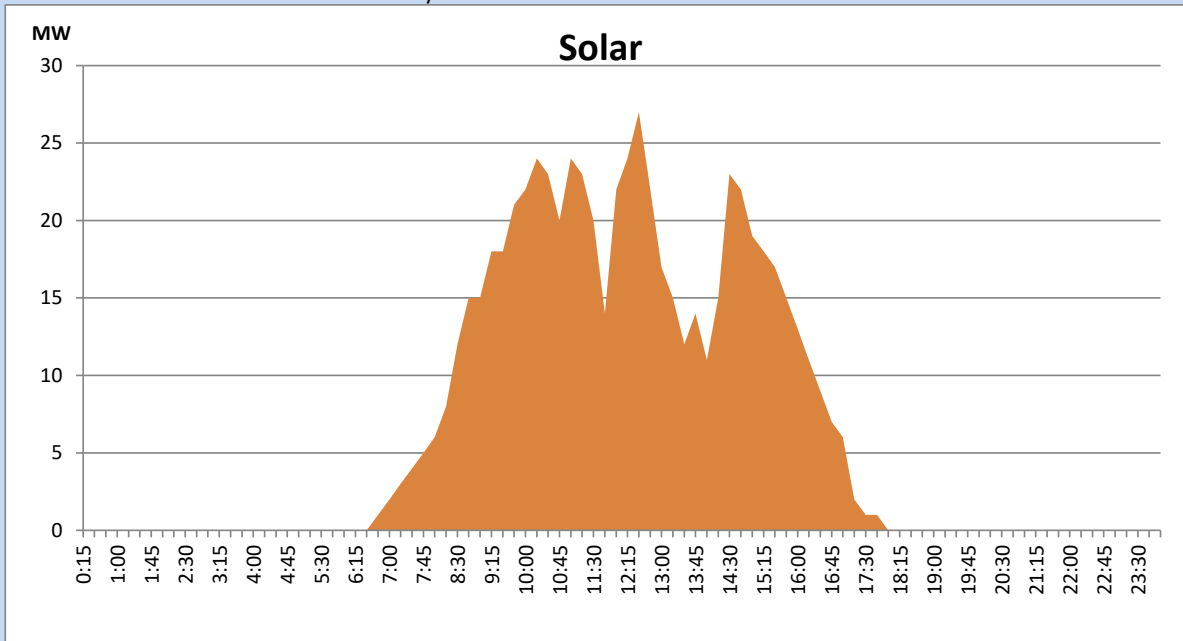
Based on Telemetered Power Stations only



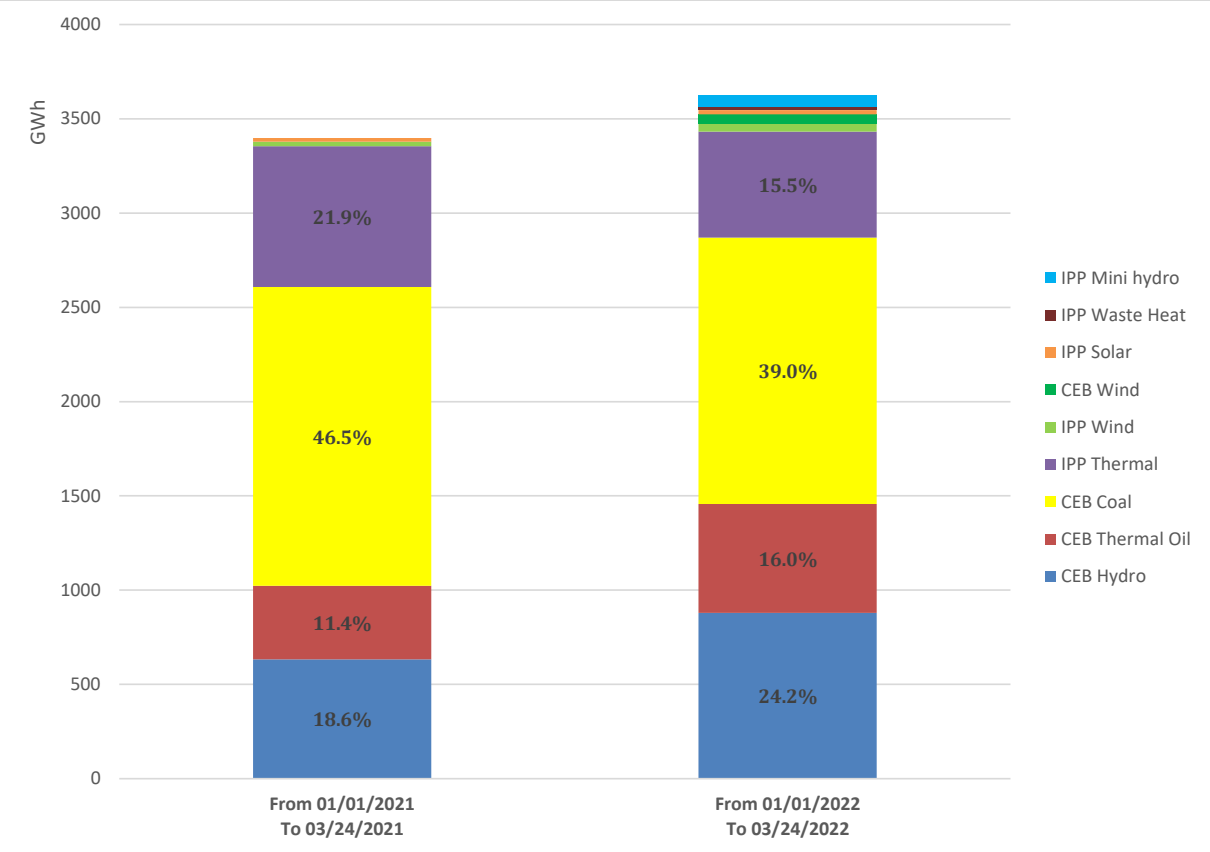
Solar Generation during the Previous day

March 23, 2022

Based on Telemetered Power Stations only



Cumulative Dispatch Comparison with Last Year



Thermal Plant Fuel types

Power Station	Primary Fuel
CEB Thermal	
Sapugaskanda 1	Heavy Fuel
Sapugaskanda 2	Heavy Fuel
Kelanitissa Small Gas Turbines	Auto Diesel
GT 7 - Kelanitissa	Auto Diesel
Kelanitissa CCY	Naphtha & Diesel
Lakvijaya 1	Coal
Lakvijaya 2	Coal
Lakvijaya 3	Coal
Uthuru Janani	Heavy Fuel
Barge CEB	Heavy Fuel

Power Station	Primary Fuel
Private Thermal	
Sojitz - Kelanitissa	Auto Diesel
West Coast	Heavy Fuel

Major Incidents during the day -as reported by CEB morning of

March 25, 2022

- 1) Rotational manual load shedding was carried out from 08:00hrs to 23:00hrs.
- 2) WCP performed a forced shutdown at 11:48hrs due to lack of fuel.