

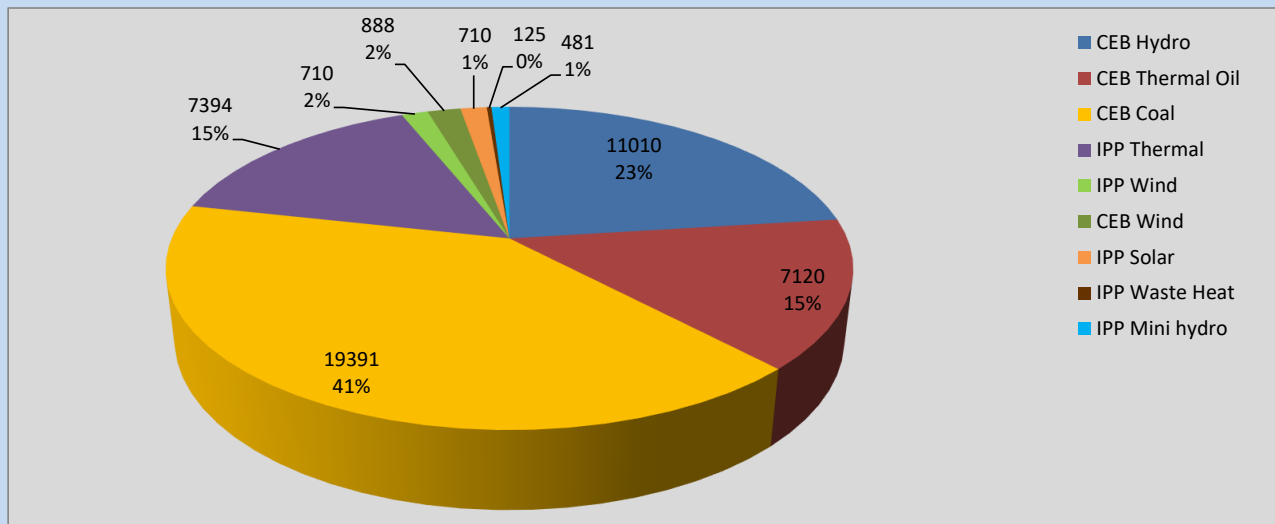
Generation and Reservoirs Statistics

March 22, 2022



PUBLIC UTILITIES COMMISSION OF SRI LANKA

Daily Generation Mix in MWh



Total Generation

47,426 MWh

Note: Above data is excluding contribution from Roof Top Solar, 1MW Solar and certain Mini Hydro plants

Cumulative Dispatch

Note: Following data is Excluding contribution from Roof Top Solar, 1MW solar and Mini Hydro plants

For Current Month

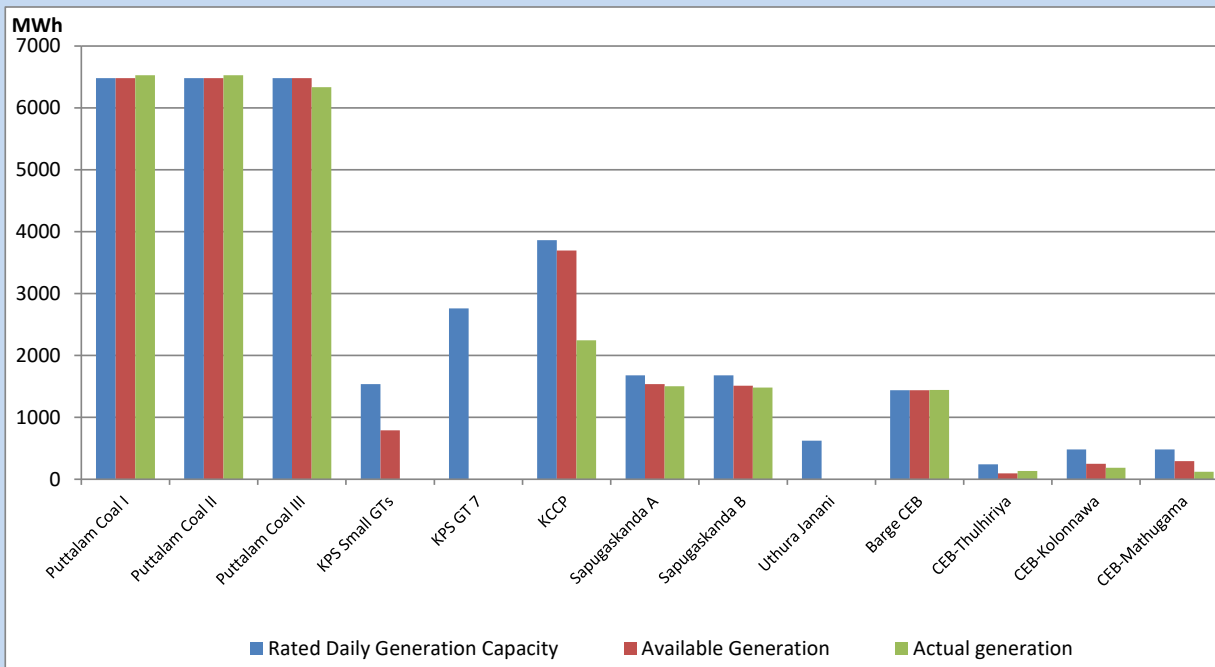
Category	Dispatch (GWh)	Percentage
CEB Hydro	184.88	19.11%
CEB Thermal Oil	144.39	14.93%
CEB Coal	430.49	44.50%
IPP Thermal	157.00	16.23%
SPP Wind	11.49	1.19%
CEB Wind	16.12	1.67%
SPP Solar	5.68	0.59%
SPP Solid Waste	4.94	0.51%
Mini Hydro	12.37	1.28%
Total	967.36	

For Current Year

Category	Dispatch (GWh)	Percentage
CEB Hydro	862.7	24.44%
CEB Thermal Oil	556.6	15.77%
CEB Coal	1,374.0	38.92%
IPP Thermal	548.4	15.53%
SPP Wind	39.6	1.12%
CEB Wind	50.4	1.43%
SPP Solar	21.0	0.59%
SPP Solid Waste	16.0	0.45%
Mini Hydro	62.1	1.76%
Total	3,530.6	

CEB owned Thermal Plant Dispatch

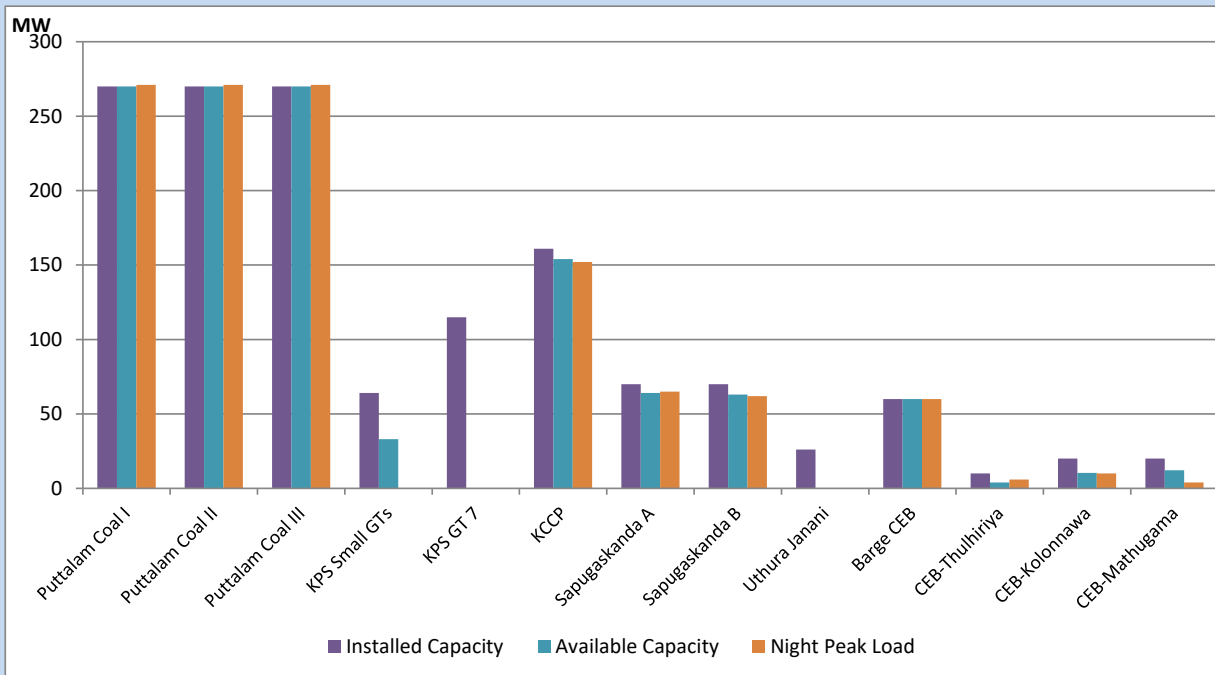
March 22, 2022



Available Generation is estimated based on plant availability at 6.00am on

March 23, 2022

CEB owned Thermal Plant Loading at the Night Peak



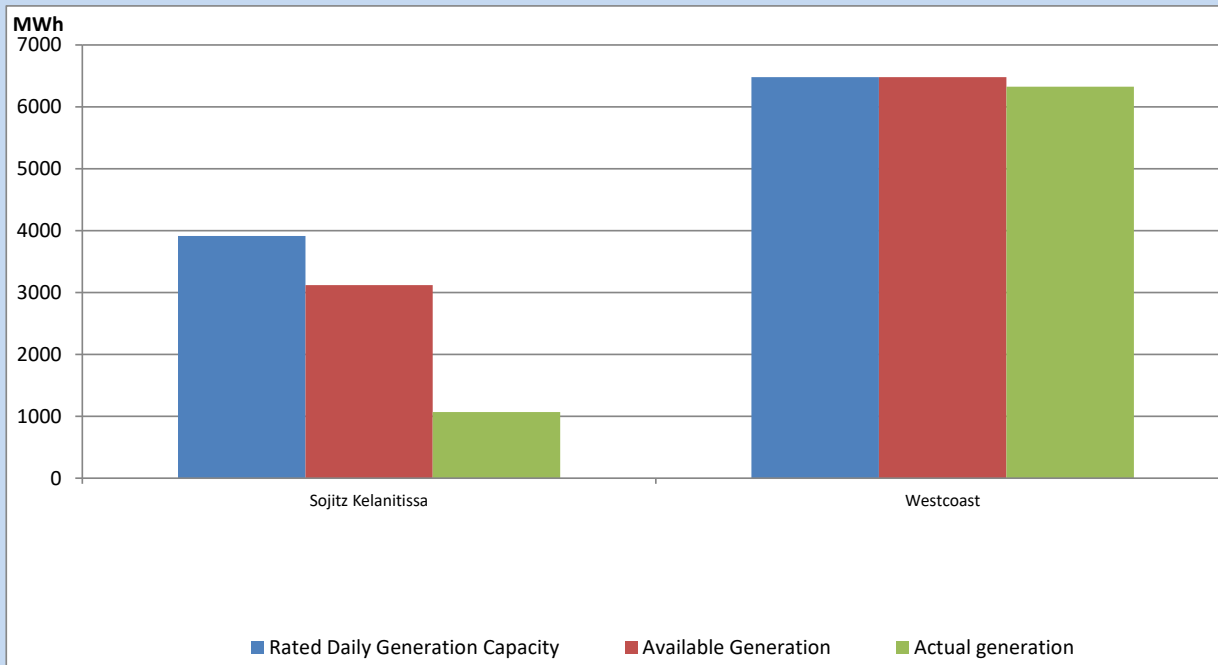
Note- Plant availability is recorded at 6.00 am on

March 23, 2022

IPP owned Thermal Plant Dispatch

March 22, 2022

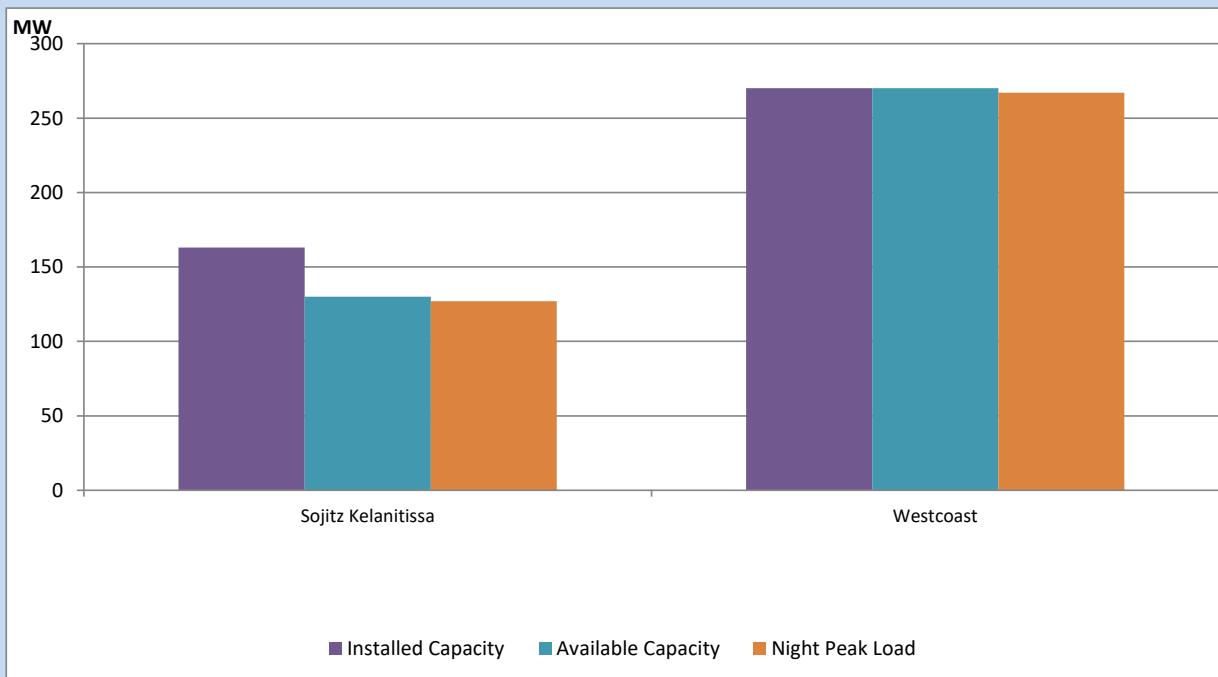
ACE Embilipitiya, ACE Matara, Asia Power, V Power Pallekale, Vpower Galle, V Power Horana, Vpower Hambantota, Vpower Valachchena and Altaqa Mahiyanganaya are not available due to expiration of PPAs



Available Generation is estimated based on plant availability at 6.00am on

March 23, 2022

IPP owned Thermal Plant Loading at the Night Peak

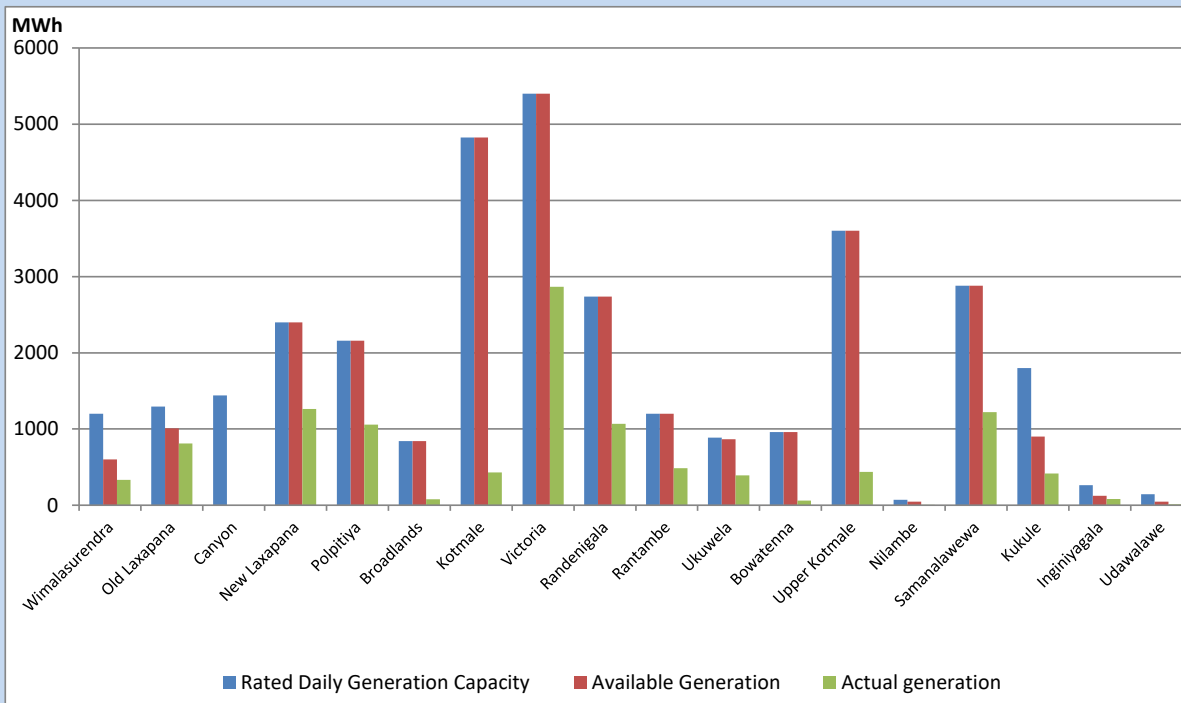


Note- Plant availability is recorded at 6.00 am on

March 23, 2022

Major Hydro Plant Dispatch

March 22, 2022

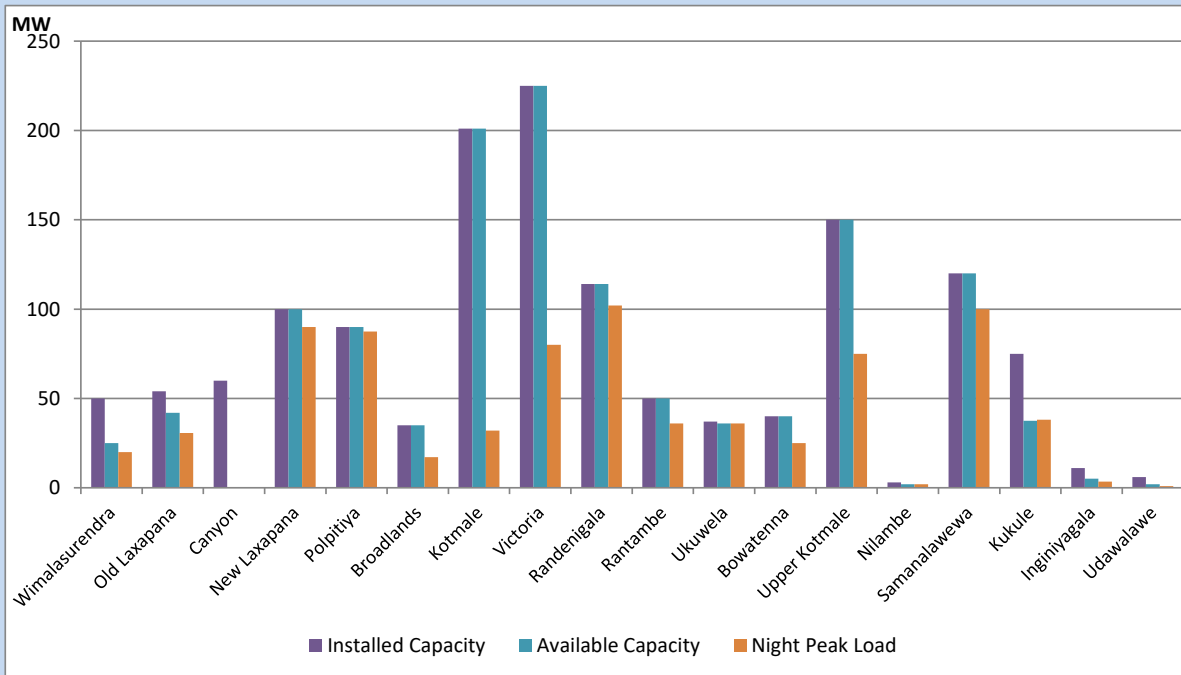


Available Generation is estimated based on plant availability at 6.00am on
Broadlands power plant is operating in the Commissioning Stage

March 23, 2022

Major Hydro Plant Loading at Night Peak

March 22, 2022



Note- Plant availability is recorded at 6.00 am on
Broadlands power plant is operating in the Commissioning Stage

March 23, 2022

Summary of Major Plant performance

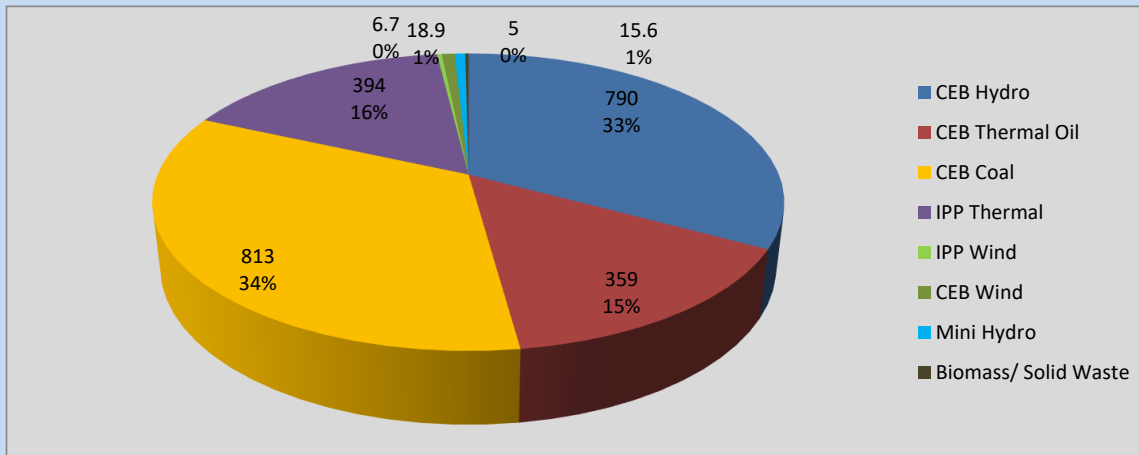
Plant	Installed Capacity	Plant Availability	Night peak Load	Plant Dispatch
	(MW)	(MW)	(MW)	(MWh)
Wimalasurendra	50	25	20	333
Old Laxapana	54	42	31	809
Canyon	60	0	0	0
New Laxapana	100	100	90	1,264
Polpitiya	90	90	88	1,057
Broadlands	35	35	17	78
Kotmale	201	201	32	430
Victoria	225	225	80	2,865
Randenigala	114	114	102	1,067
Rantambe	50	50	36	485
Ukuwela	37	36	36	391
Bowatenna	40	40	25	59
Upper Kotmale	150	150	75	437
Nilambe	3	2	2	4
Samanalawewa	120	120	100	1,221
Kukule	75	38	38	416
Inginiyagala	11	5	4	81
Udawalawe	6	2	1	13
Puttalam Coal I	270	270	271	6,528
Puttalam Coal II	270	270	271	6,527
Puttalam Coal III	270	270	271	6,336
KPS Small GTs	64	33	0	3
KPS GT 7	115	0	0	0
KCCP	161	154	152	2,247
Sapugaskanda A	70	64	65	1,502
Sapugaskanda B	70	63	62	1,482
Uthura Janani	26	0	0	0
Barge CEB	60	60	60	1,445
CEB-Thulhiriya	10	4	6	133
CEB-Kolonnawa	20	10	10	186
CEB-Mathugama	20	12	4	122
Sojitz Kelanitissa	163	130	127	1,070
West Coast	270	270	267	6,324
Total	3,280	2,885	2,388	47,426

Plant availability is the availability recorded at 6 am on

March 23, 2022

Contribution to the Night Peak in MW

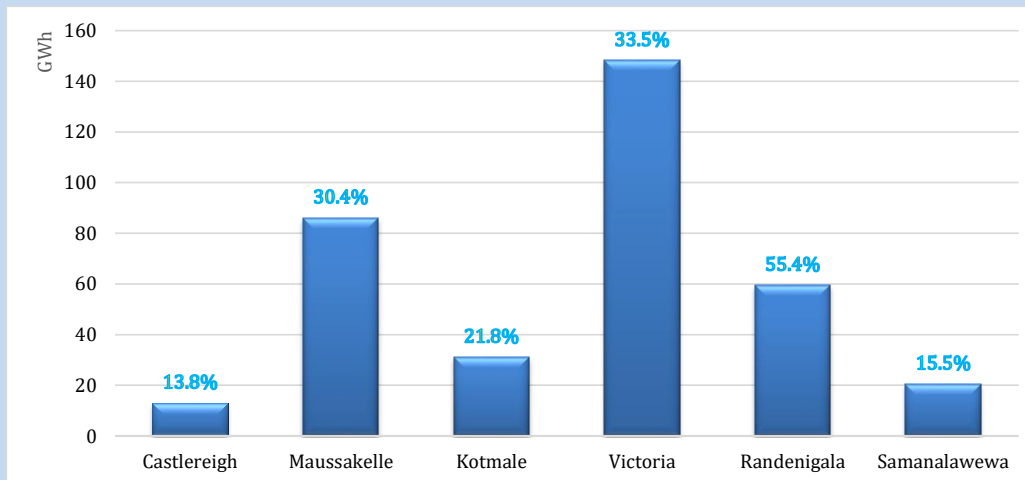
March 22, 2022



Night Peak*	2,402.1 MW
Day Peak	1,996.8 MW
Minimum Demand	1,597.3 MW

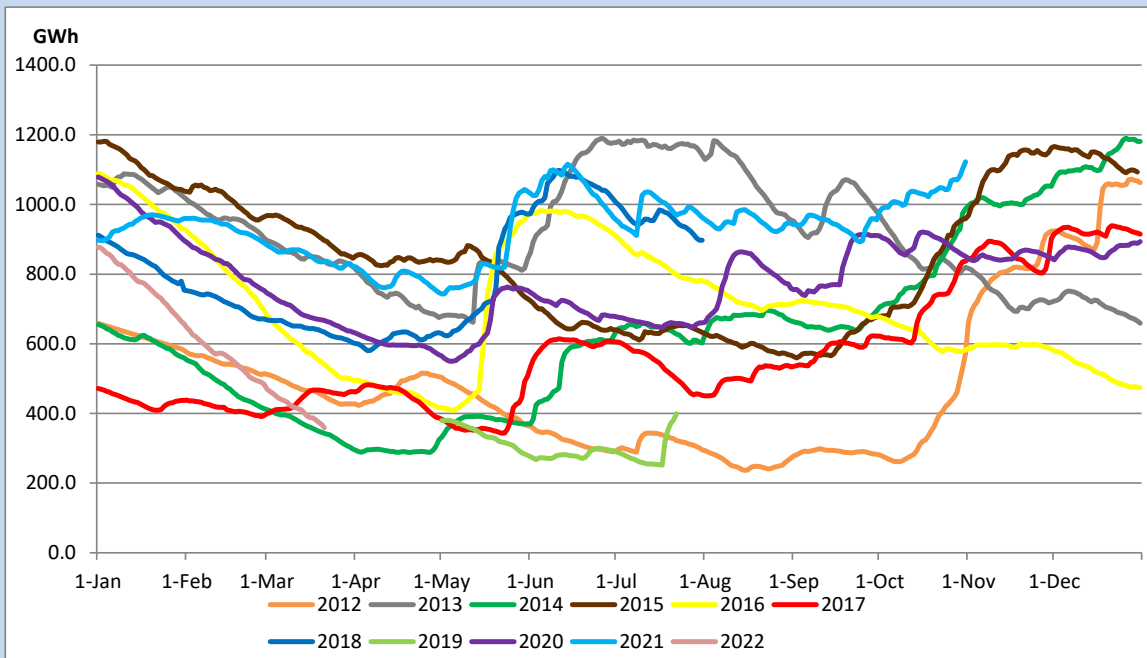
Above figures are excluding contribution from Roof Top Solar, 1MW solar, certain Wind plants and Mini Hydro plants

Reservoir Levels - as at 06.00 Hr on March 23, 2022



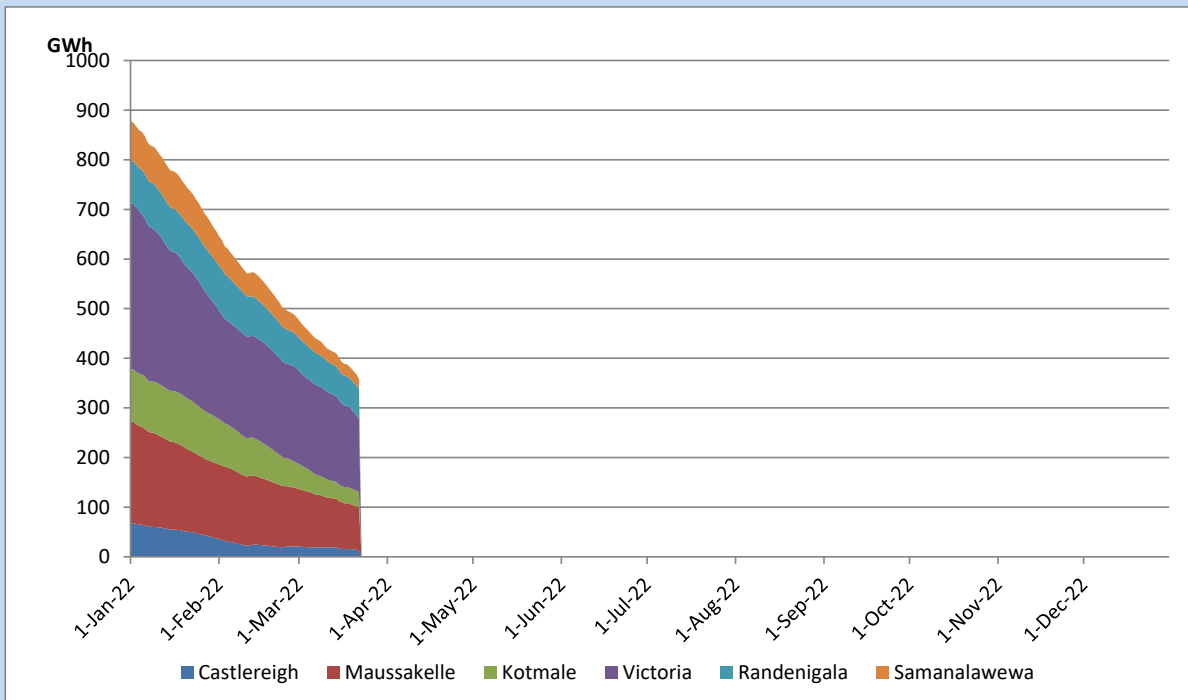
Total Reservoir Level	359 GWh
% of Total capacity	28.4%

Comparison of Total Reservoir Storage Levels with Past Years

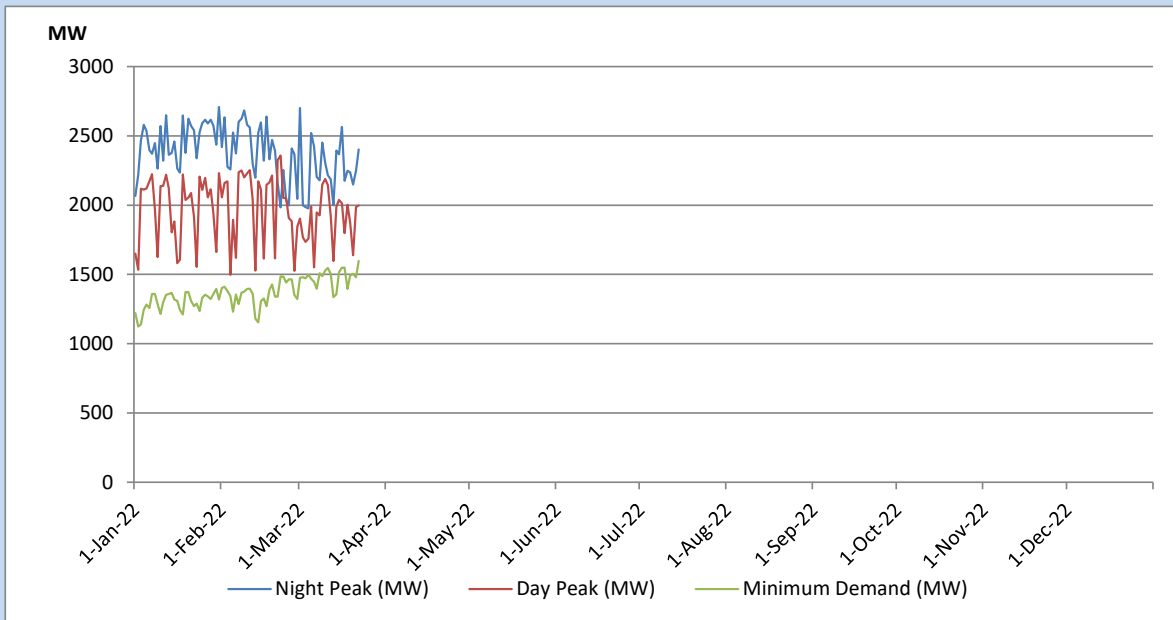


Data for 2018 and 2019 are only available for part of year.

Variation of Major Hydro Reservoir Levels in the current year (GWh)



Variation of Demand during the current year

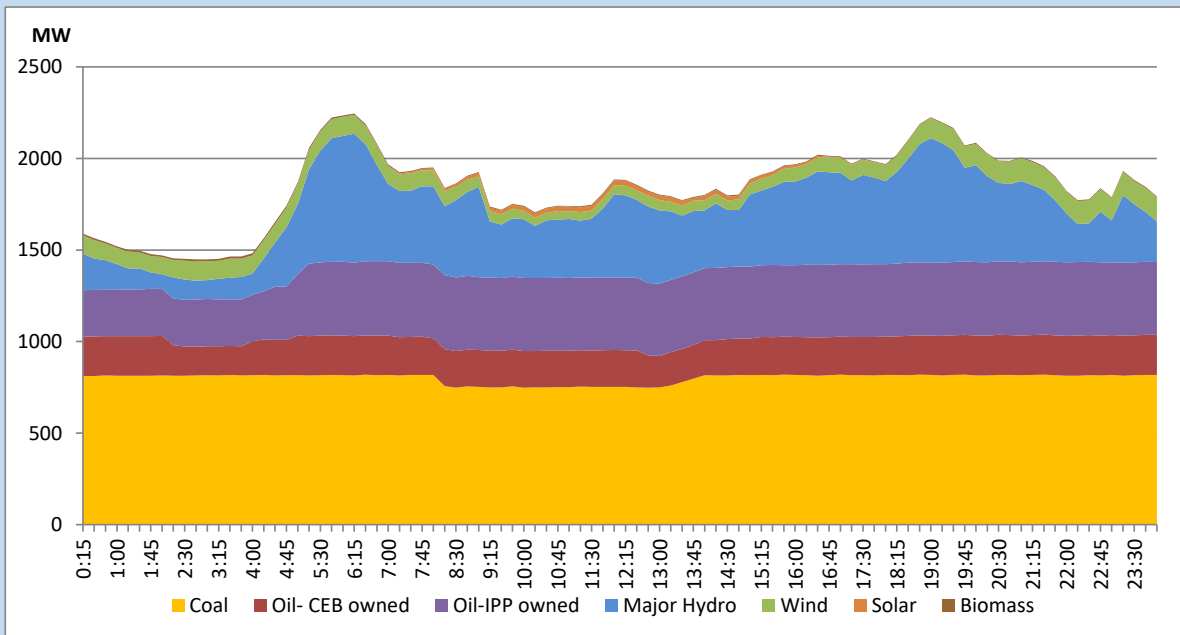


The above figures are excluding contribution from Roof Top Solar, 1MW solar, certain Wind plants and Mini Hydro plants

Daily Load Curve of the Previous day

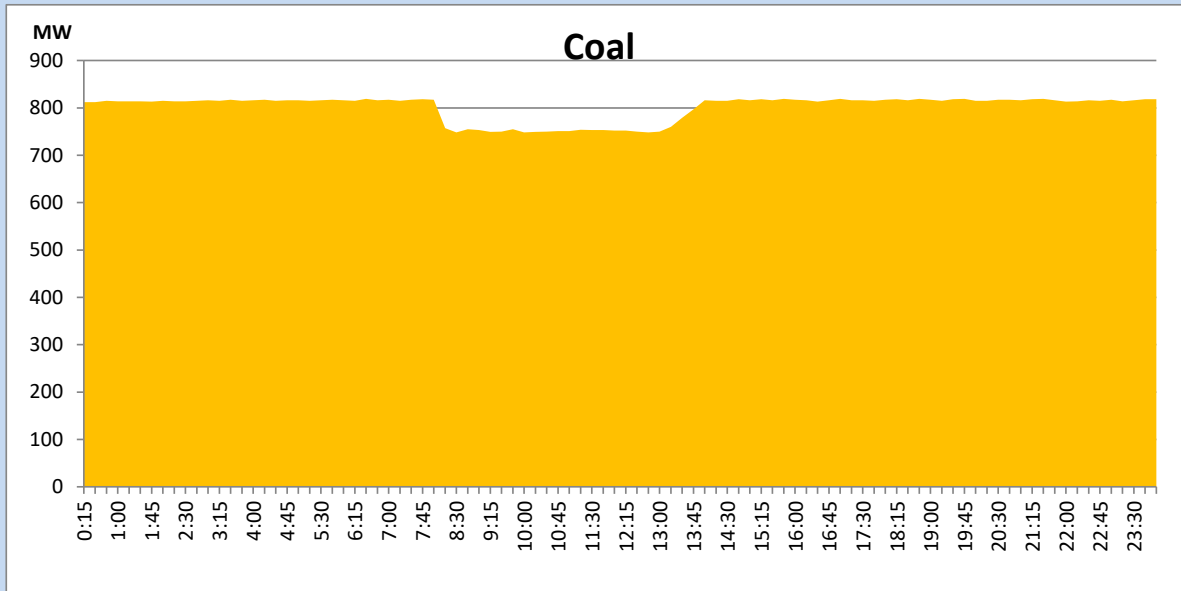
March 21, 2022

Solar and wind data is based on Telemetered Power Stations only



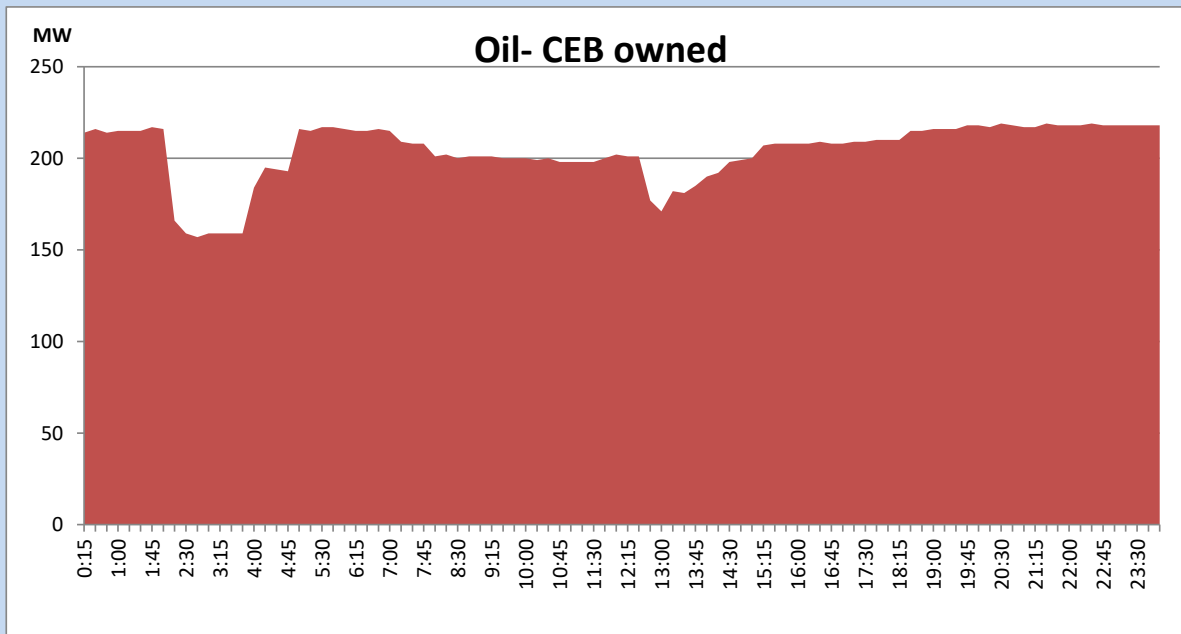
Coal Generation during the Previous day

March 21, 2022



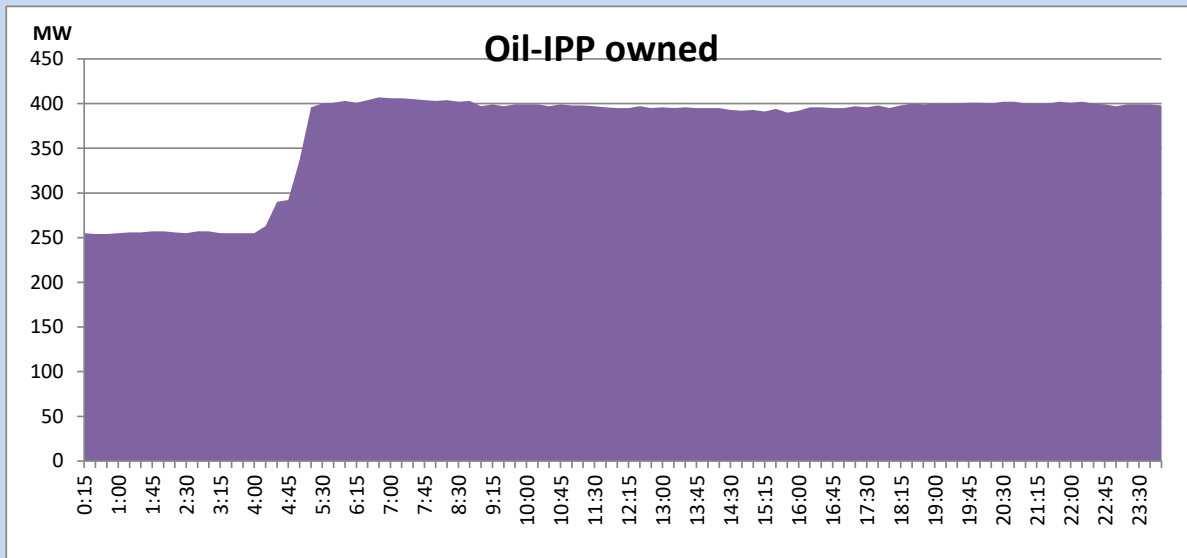
CEB Oil Plant Generation during the Previous day

March 21, 2022



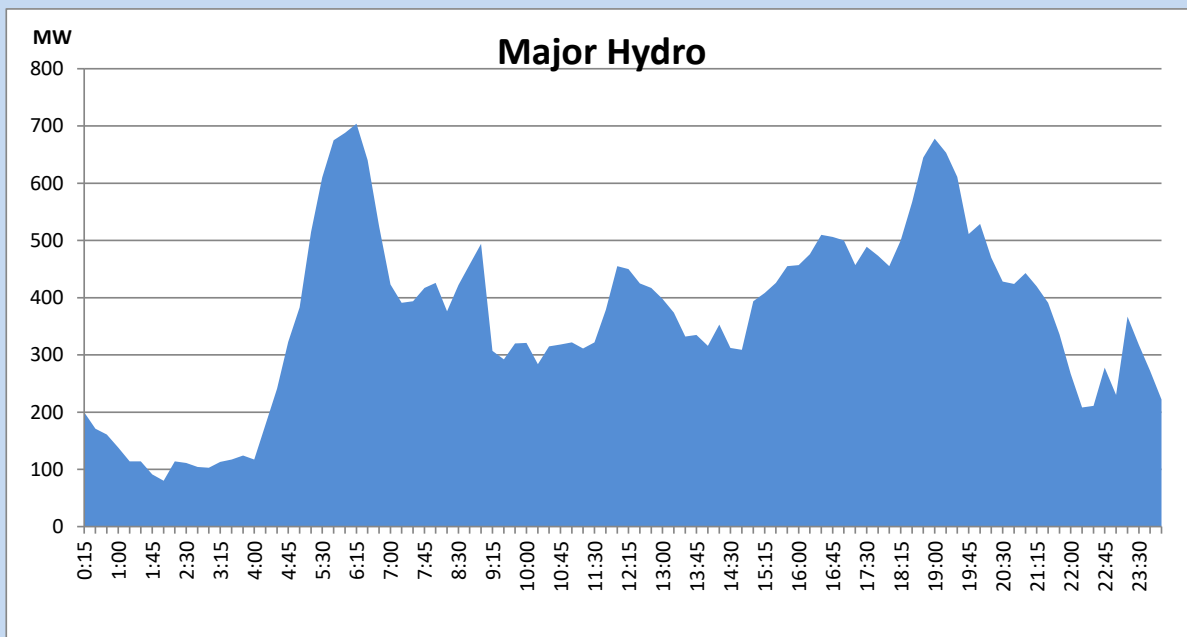
IPP Oil Plant Generation during the Previous day

March 21, 2022



Major Hydro Generation during the Previous day

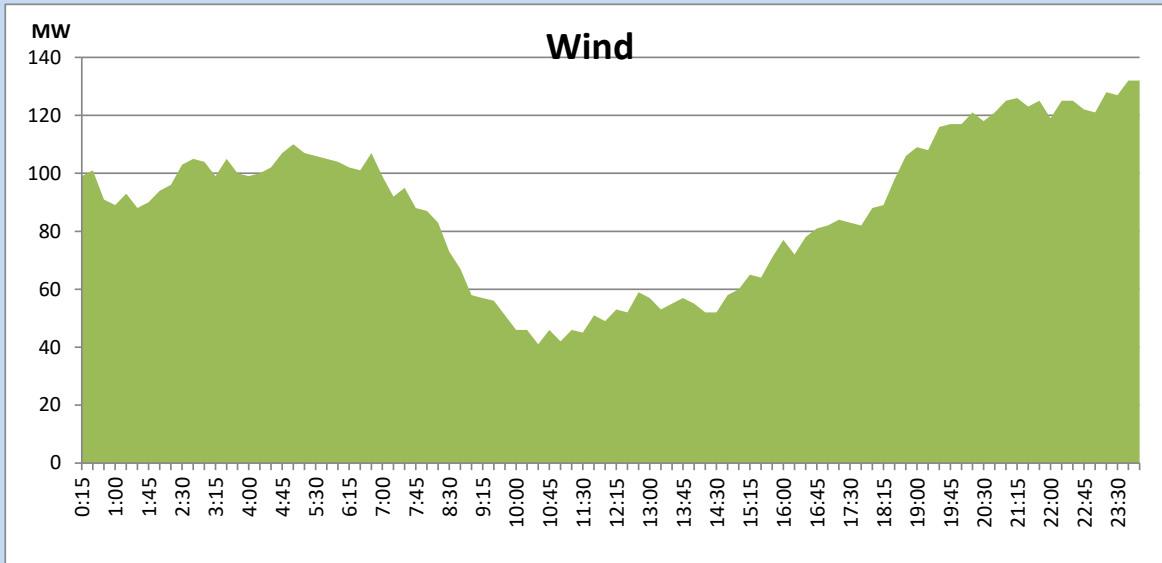
March 21, 2022



Wind Generation during the Previous day

March 21, 2022

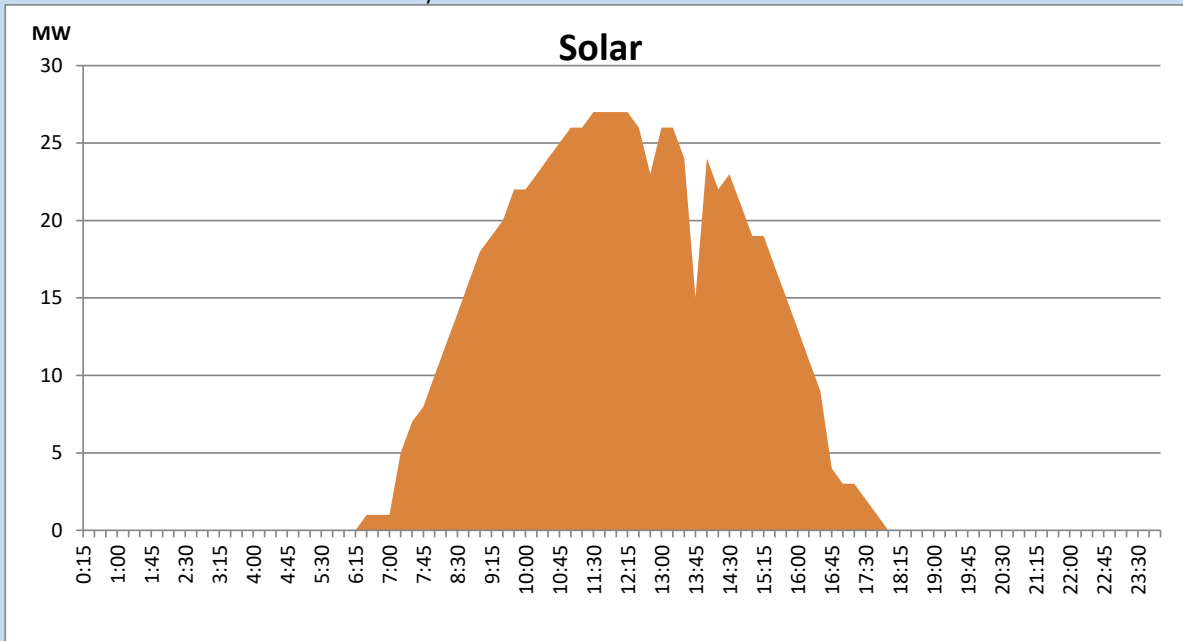
Based on Telemetered Power Stations only



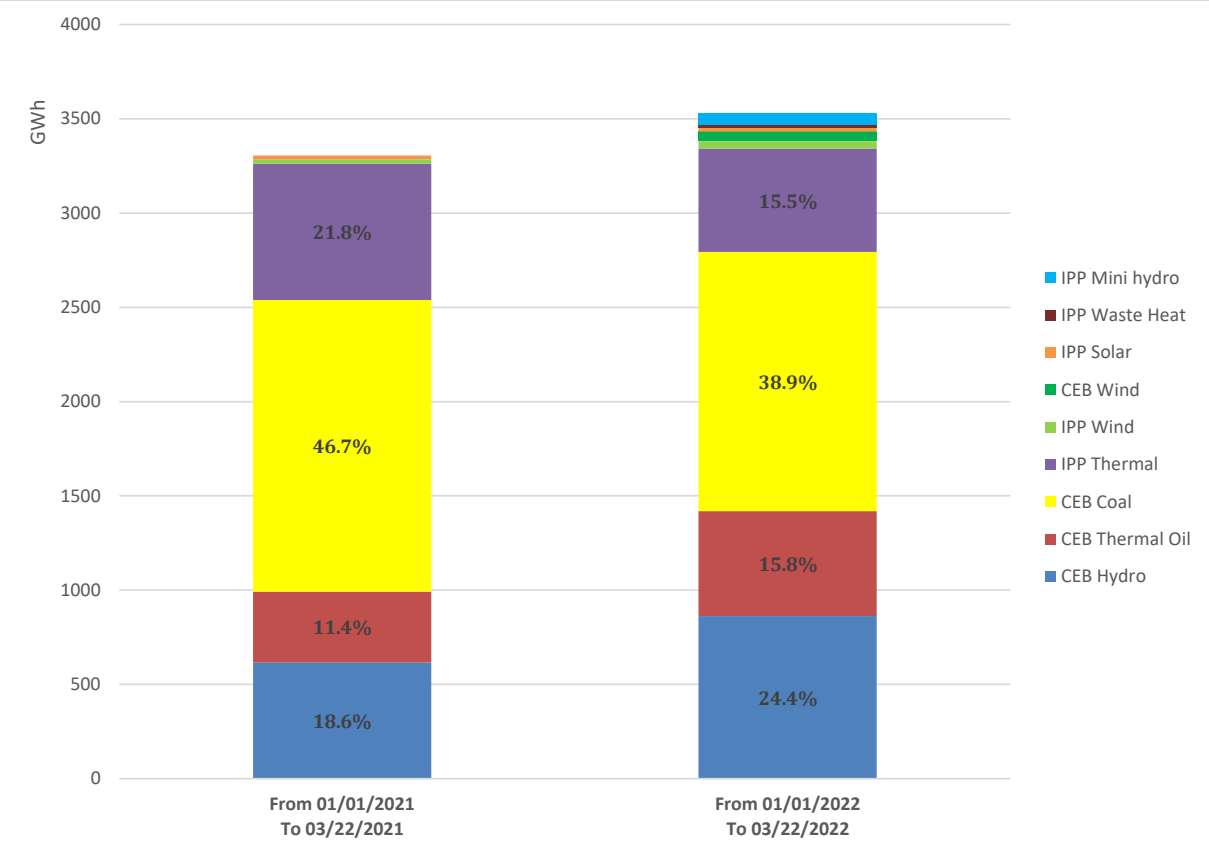
Solar Generation during the Previous day

March 21, 2022

Based on Telemetered Power Stations only



Cumulative Dispatch Comparison with Last Year



Thermal Plant Fuel types

Power Station	Primary Fuel
CEB Thermal	
Sapugaskanda 1	Heavy Fuel
Sapugaskanda 2	Heavy Fuel
Kelanitissa Small Gas Turbines	Auto Diesel
GT 7 - Kelanitissa	Auto Diesel
Kelanitissa CCY	Naphtha & Diesel
Lakvijaya 1	Coal
Lakvijaya 2	Coal
Lakvijaya 3	Coal
Uthuru Janani	Heavy Fuel
Barge CEB	Heavy Fuel

Power Station	Primary Fuel
Private Thermal	
Sojitz - Kelanitissa	Auto Diesel
West Coast	Heavy Fuel

Major Incidents during the day -as reported by CEB morning of

March 23, 2022

- 1) Rotational manual load shedding was carried out from 08:00hrs to 23:00hrs.
- 2) LVPS unit 03 availability limited to 210 MW from 08:15hrs to 11:00hrs due to blockage in cooling water intake .
- 3) Sojitz plant performed forced shutdown at 01:59hrs due to lack of fuel and resumed generation at 16:07 hrs.
- 4) KCCP GT resumed generation at 07:14hrs and KCCP ST resumed generation at 11:17 hrs.
- 5) KPS GT-07 resumed generation at 06:00 hrs (on 23/03/2022)