

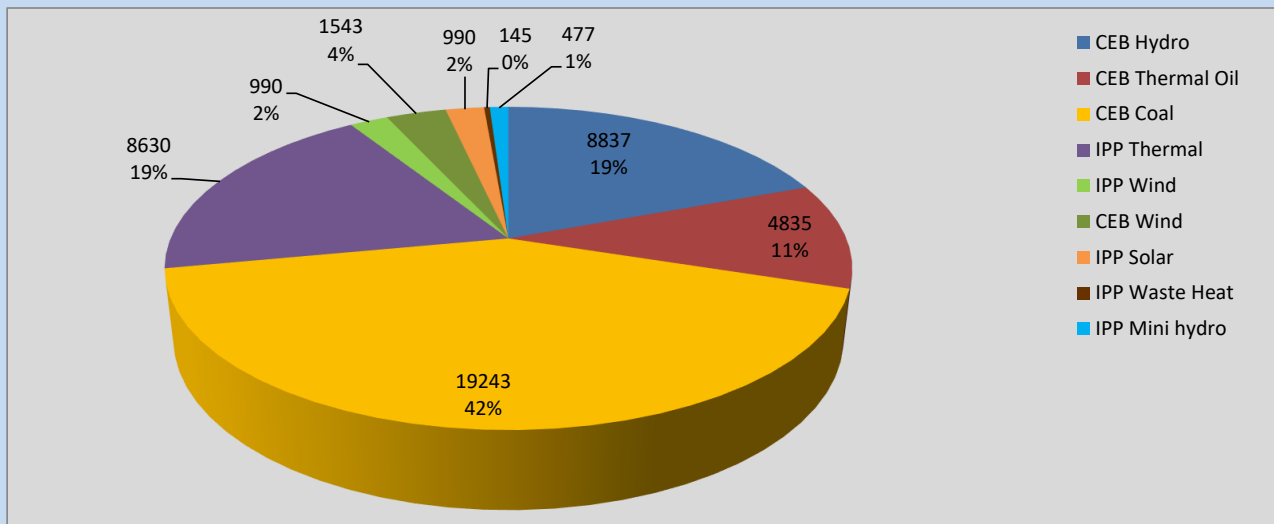
Generation and Reservoirs Statistics

March 21, 2022



PUBLIC UTILITIES COMMISSION OF SRI LANKA

Daily Generation Mix in MWh



Total Generation **45,027 MWh**

Note: Above data is excluding contribution from Roof Top Solar, 1MW Solar and certain Mini Hydro plants

Cumulative Dispatch

Note: Following data is Excluding contribution from Roof Top Solar, 1MW solar and Mini Hydro plants

For Current Month

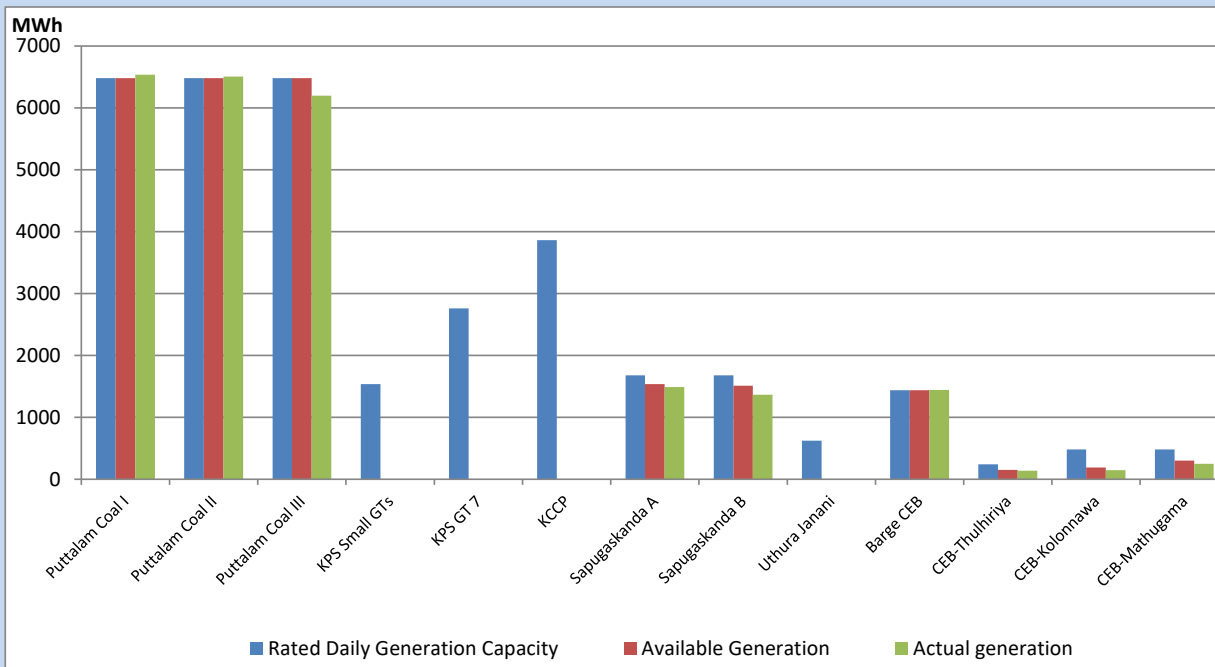
Category	Dispatch (GWh)	Percentage
CEB Hydro	173.87	18.90%
CEB Thermal Oil	137.27	14.92%
CEB Coal	411.10	44.69%
IPP Thermal	149.61	16.26%
SPP Wind	10.78	1.17%
CEB Wind	15.23	1.66%
SPP Solar	5.37	0.58%
SPP Solid Waste	4.81	0.52%
Mini Hydro	11.89	1.29%
Total	919.93	

For Current Year

Category	Dispatch (GWh)	Percentage
CEB Hydro	851.7	24.45%
CEB Thermal Oil	549.5	15.78%
CEB Coal	1,354.7	38.89%
IPP Thermal	541.0	15.53%
SPP Wind	38.9	1.12%
CEB Wind	49.5	1.42%
SPP Solar	20.7	0.59%
SPP Solid Waste	15.9	0.46%
Mini Hydro	61.6	1.77%
Total	3,483.2	

CEB owned Thermal Plant Dispatch

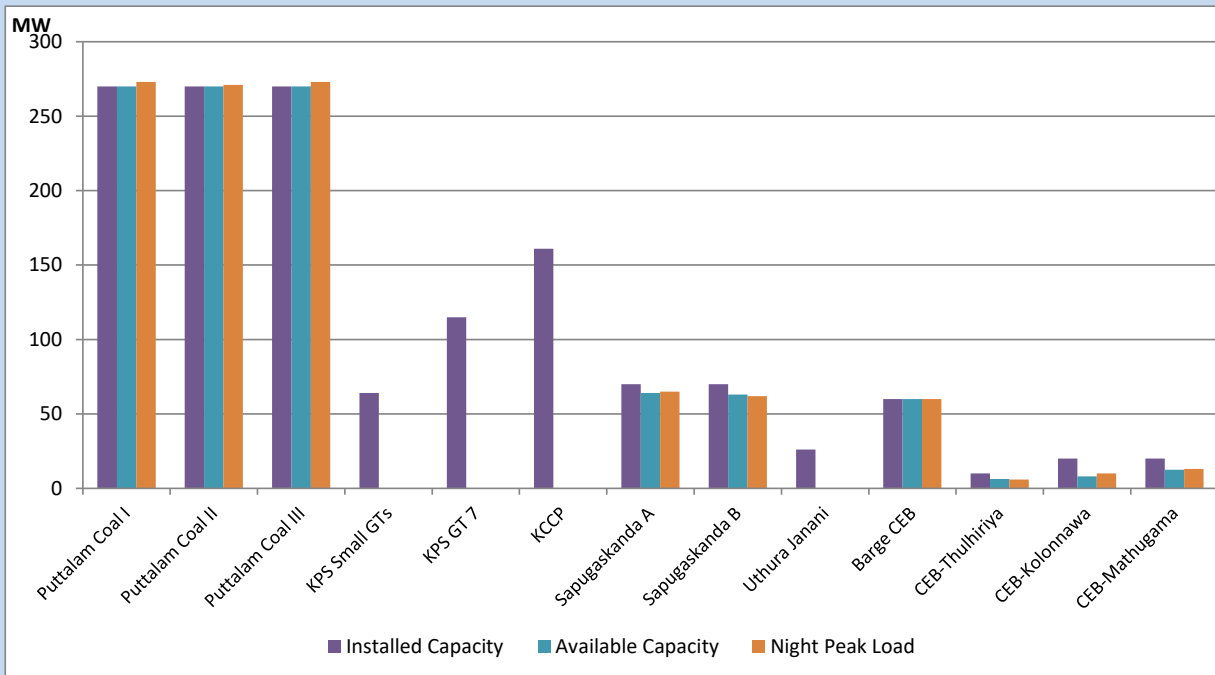
March 21, 2022



Available Generation is estimated based on plant availability at 6.00am on

March 22, 2022

CEB owned Thermal Plant Loading at the Night Peak



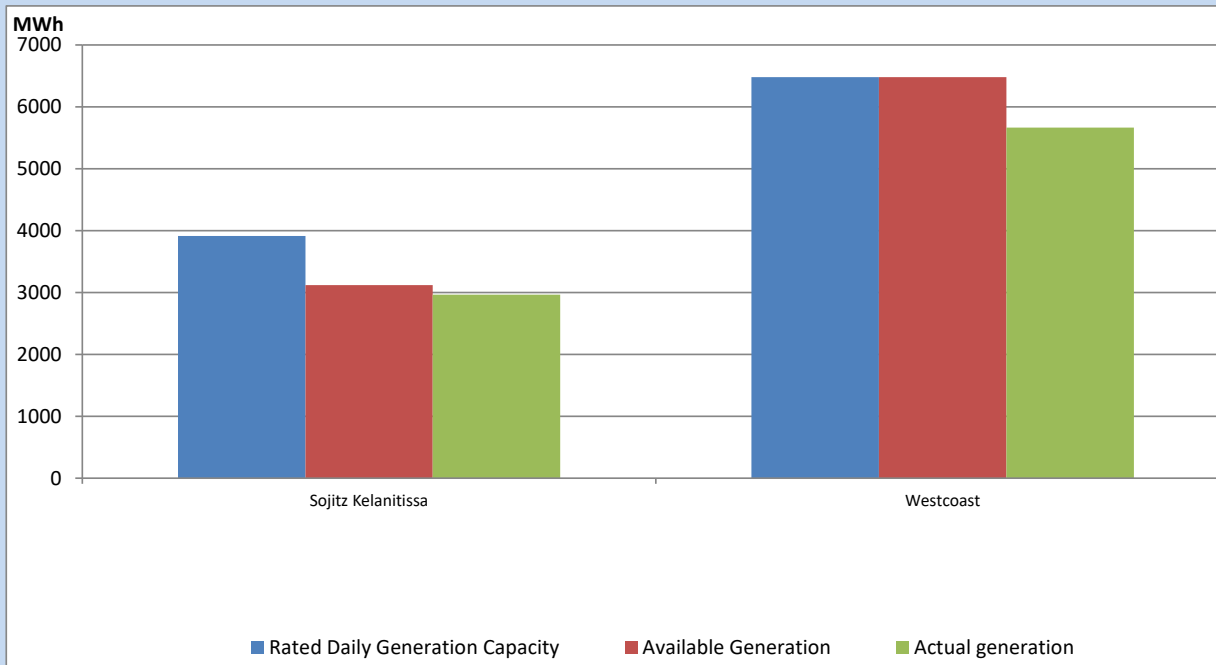
Note- Plant availability is recorded at 6.00 am on

March 22, 2022

IPP owned Thermal Plant Dispatch

March 21, 2022

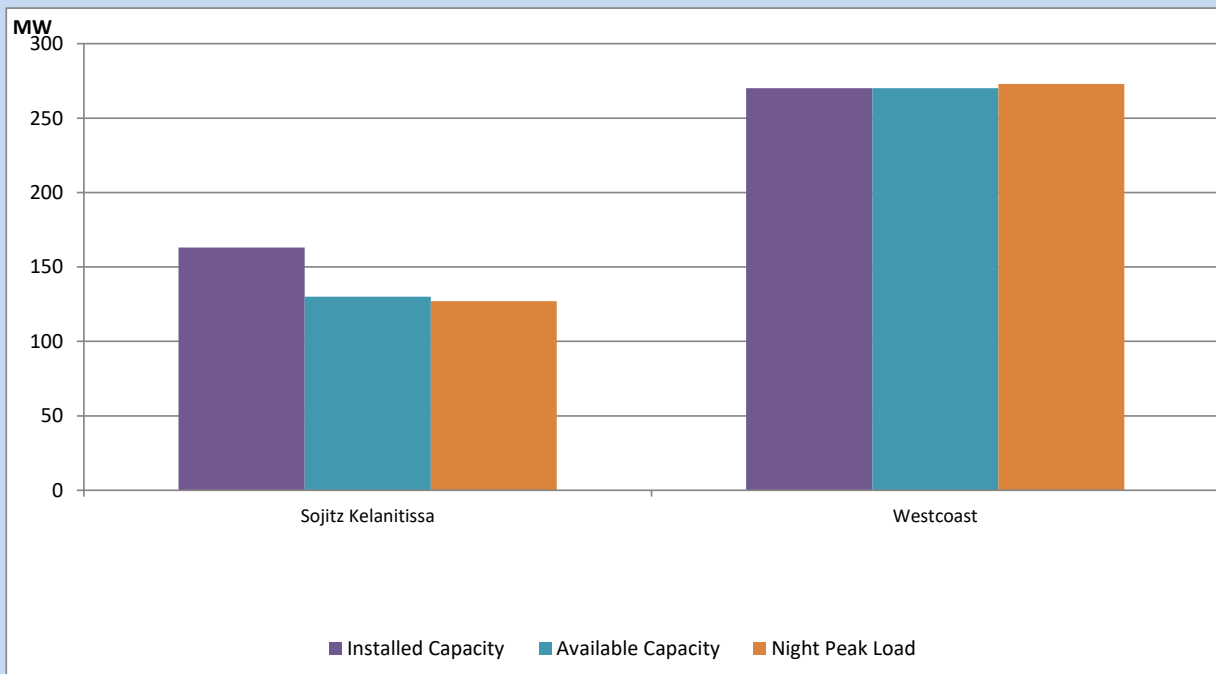
ACE Embilipitiya, ACE Matara, Asia Power, V Power Pallekale, Vpower Galle, V Power Horana, Vpower Hambantota, Vpower Valachchena and Altaqa Mahiyanganaya are not available due to expiration of PPAs



Available Generation is estimated based on plant availability at 6.00am on

March 22, 2022

IPP owned Thermal Plant Loading at the Night Peak

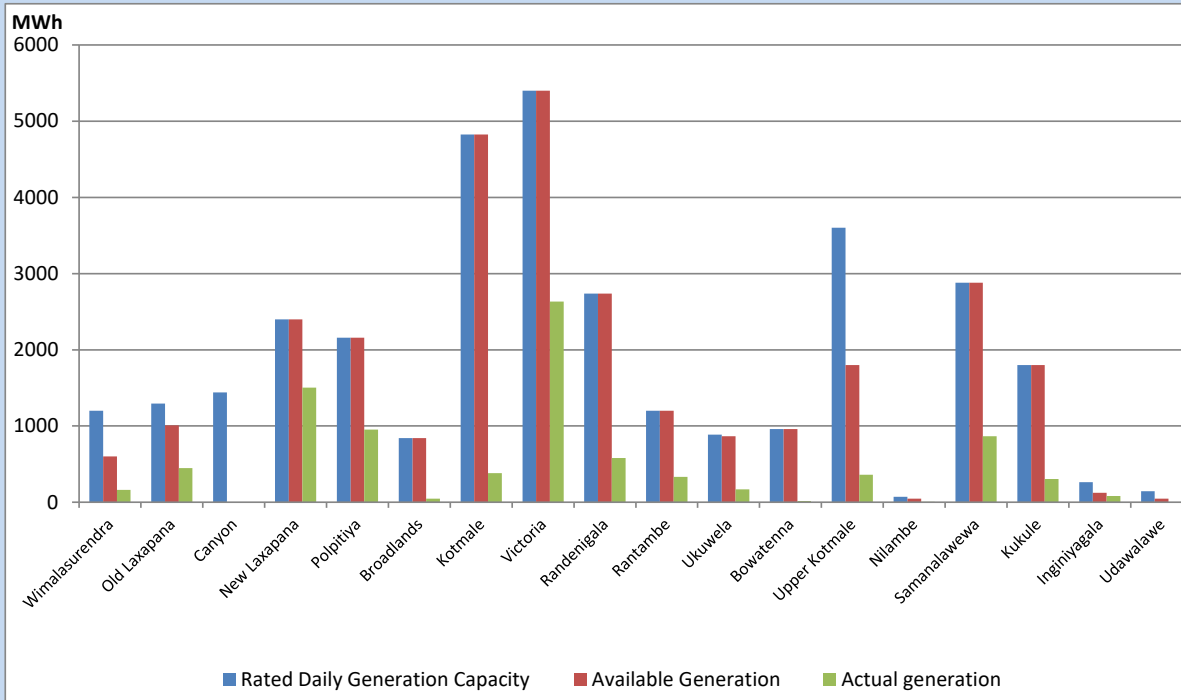


Note- Plant availability is recorded at 6.00 am on

March 22, 2022

Major Hydro Plant Dispatch

March 21, 2022

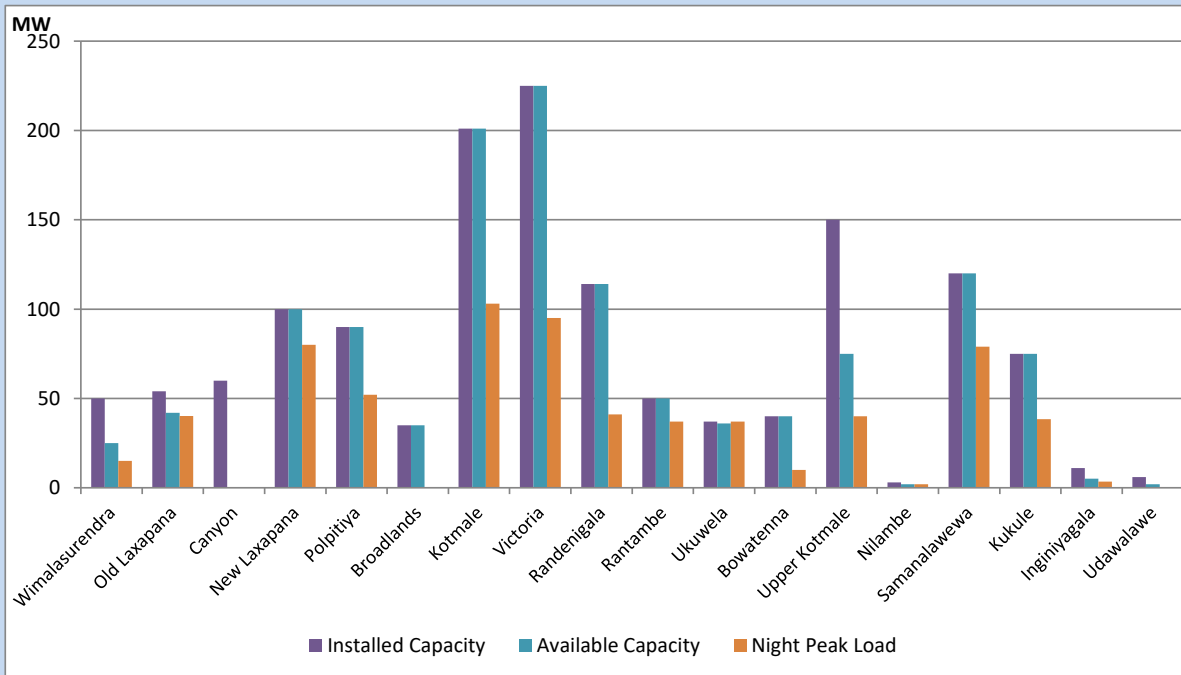


Available Generation is estimated based on plant availability at 6.00am on
Broadlands power plant is operating in the Commissioning Stage

March 22, 2022

Major Hydro Plant Loading at Night Peak

March 21, 2022



Note- Plant availability is recorded at 6.00 am on
Broadlands power plant is operating in the Commissioning Stage

March 22, 2022

Summary of Major Plant performance

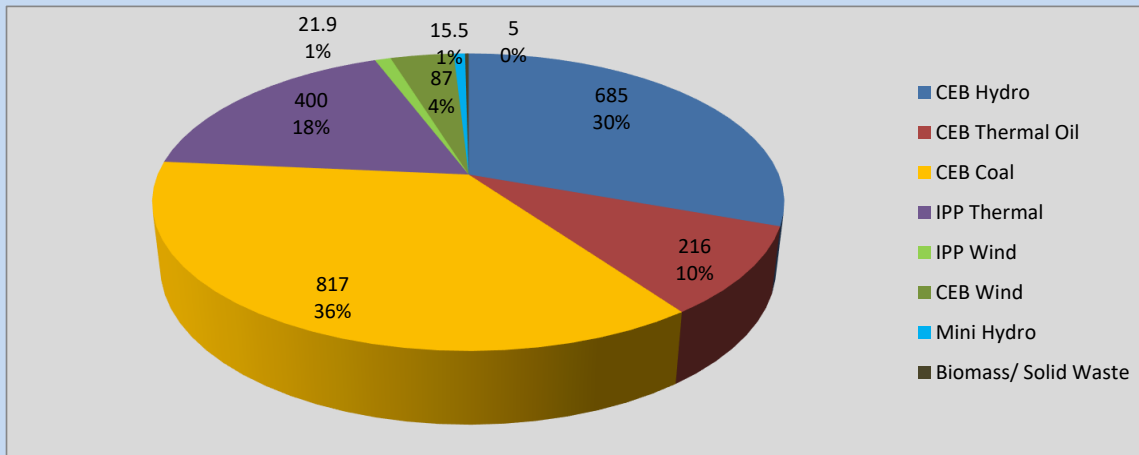
Plant	Installed Capacity	Plant Availability	Night peak Load	Plant Dispatch
	(MW)	(MW)	(MW)	(MWh)
Wimalasurendra	50	25	15	160
Old Laxapana	54	42	40	446
Canyon	60	0	0	0
New Laxapana	100	100	80	1,502
Polpitiya	90	90	52	954
Broadlands	35	35	0	48
Kotmale	201	201	103	380
Victoria	225	225	95	2,634
Randenigala	114	114	41	581
Rantambe	50	50	37	331
Ukuwela	37	36	37	168
Bowatenna	40	40	10	14
Upper Kotmale	150	75	40	362
Nilambe	3	2	2	4
Samanalawewa	120	120	79	865
Kukule	75	75	38	305
Inginiyagala	11	5	4	83
Udawalawe	6	2	0	0
Puttalam Coal I	270	270	273	6,538
Puttalam Coal II	270	270	271	6,506
Puttalam Coal III	270	270	273	6,199
KPS Small GTs	64	0	0	0
KPS GT 7	115	0	0	0
KCCP	161	0	0	0
Sapugaskanda A	70	64	65	1,489
Sapugaskanda B	70	63	62	1,366
Uthura Janani	26	0	0	0
Barge CEB	60	60	60	1,443
CEB-Thulhiriya	10	6	6	140
CEB-Kolonnawa	20	8	10	146
CEB-Mathugama	20	13	13	251
Sojitz Kelanitissa	163	130	127	2,966
West Coast	270	270	273	5,664
Total	3,280	2,661	2,236	45,027

Plant availability is the availability recorded at 6 am on

March 22, 2022

Contribution to the Night Peak in MW

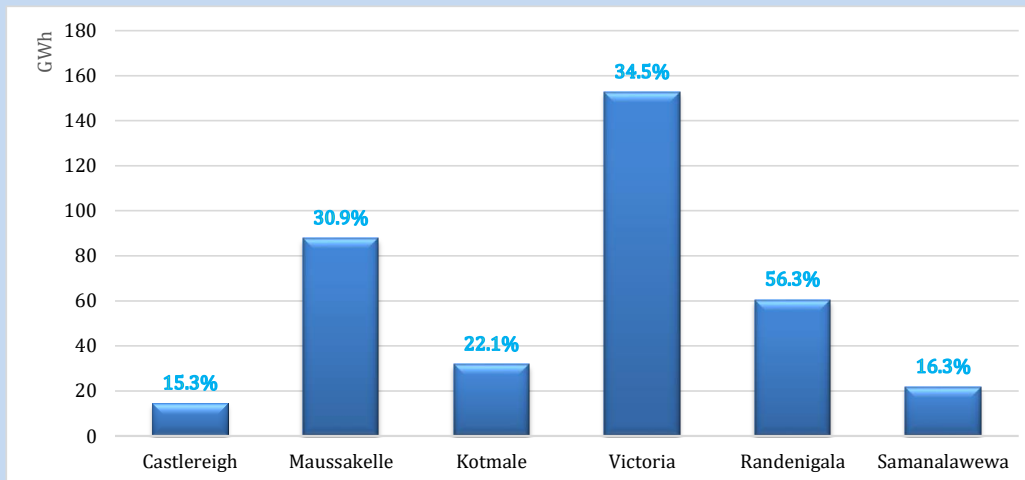
March 21, 2022



Night Peak*	2,247.6 MW
Day Peak	1,987.3 MW
Minimum Demand	1,478.9 MW

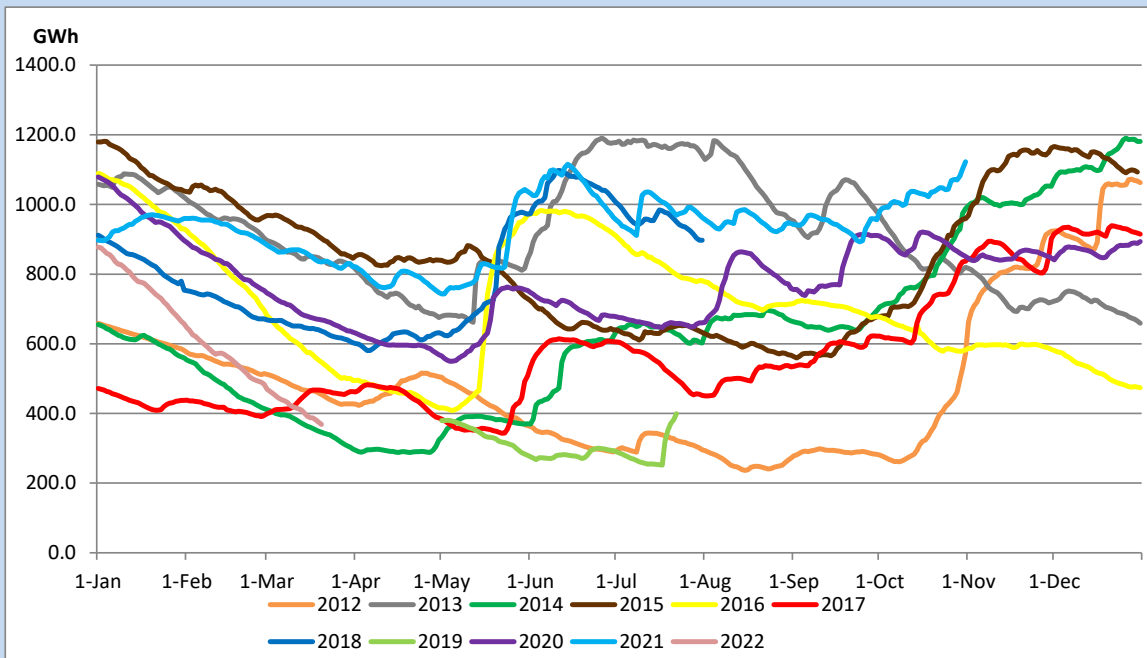
Above figures are excluding contribution from Roof Top Solar, 1MW solar, certain Wind plants and Mini Hydro plants

Reservoir Levels - as at 06.00 Hr on March 22, 2022



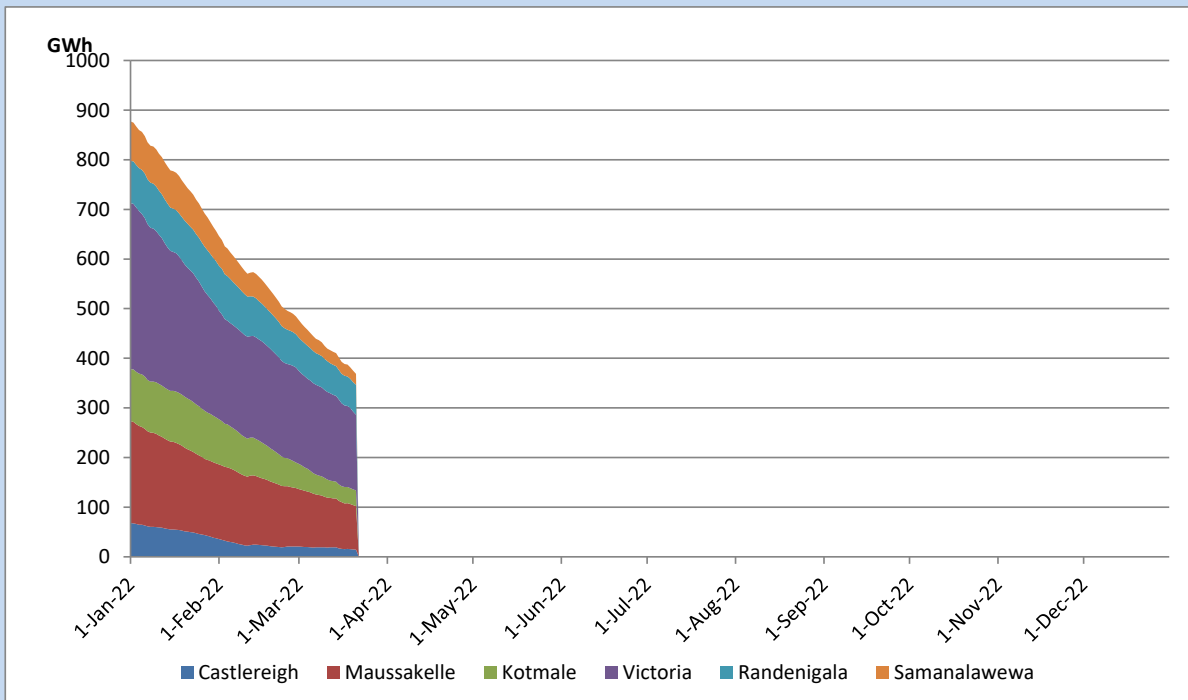
Total Reservoir Level	368.6 GWh
% of Total capacity	29.2%

Comparison of Total Reservoir Storage Levels with Past Years

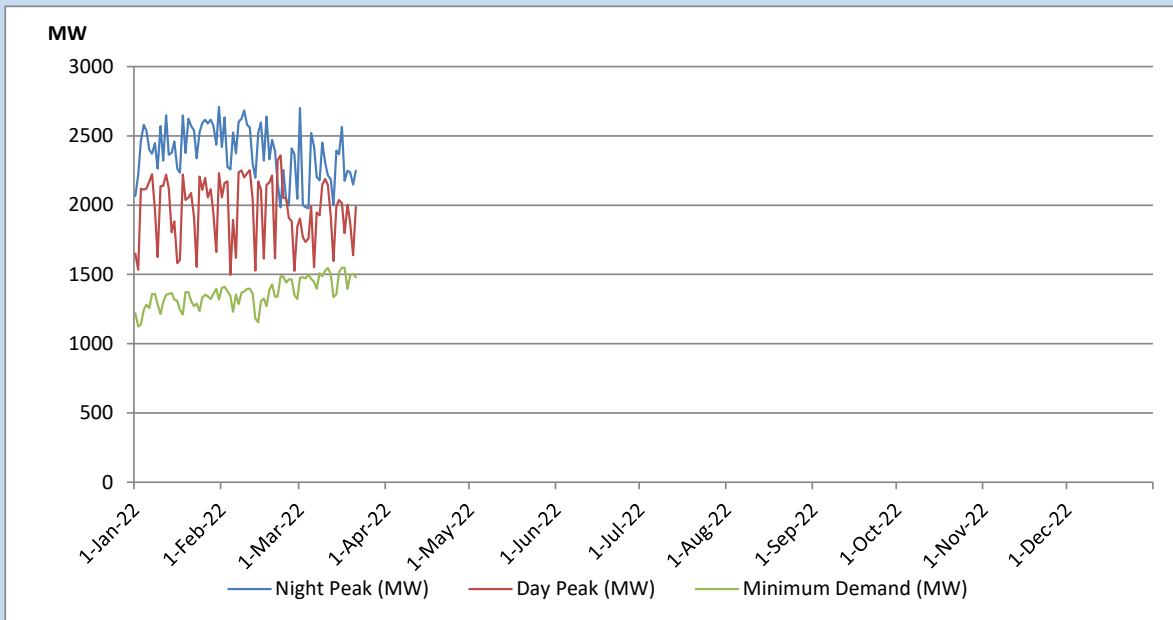


Data for 2018 and 2019 are only available for part of year.

Variation of Major Hydro Reservoir Levels in the current year (GWh)



Variation of Demand during the current year

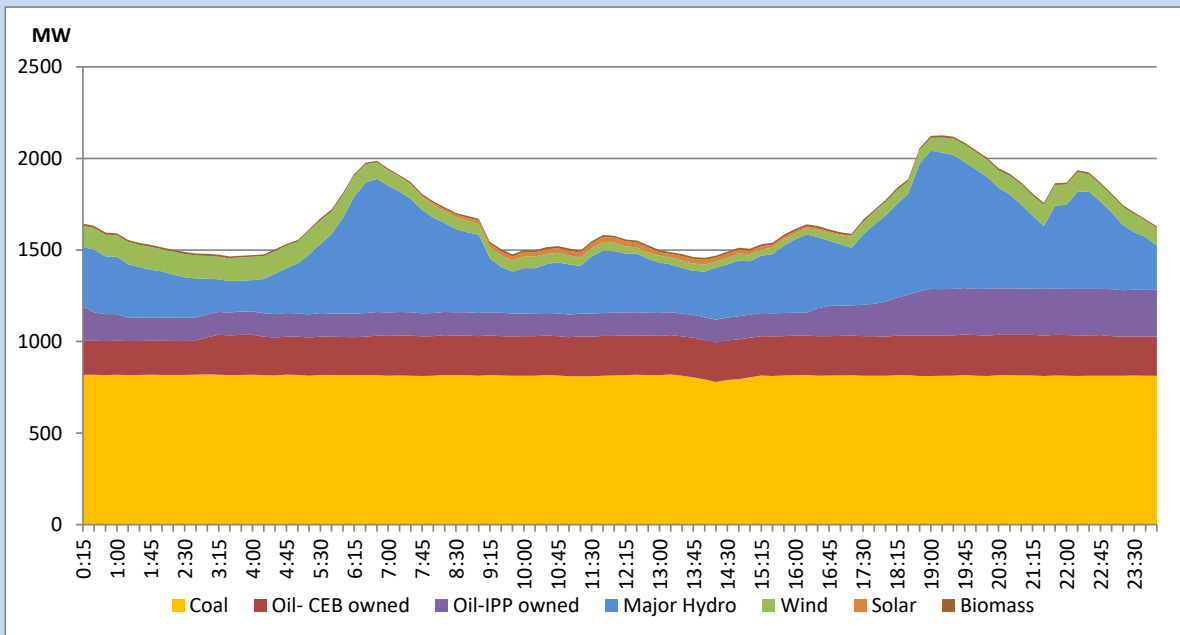


The above figures are excluding contribution from Roof Top Solar, 1MW solar, certain Wind plants and Mini Hydro plants

Daily Load Curve of the Previous day

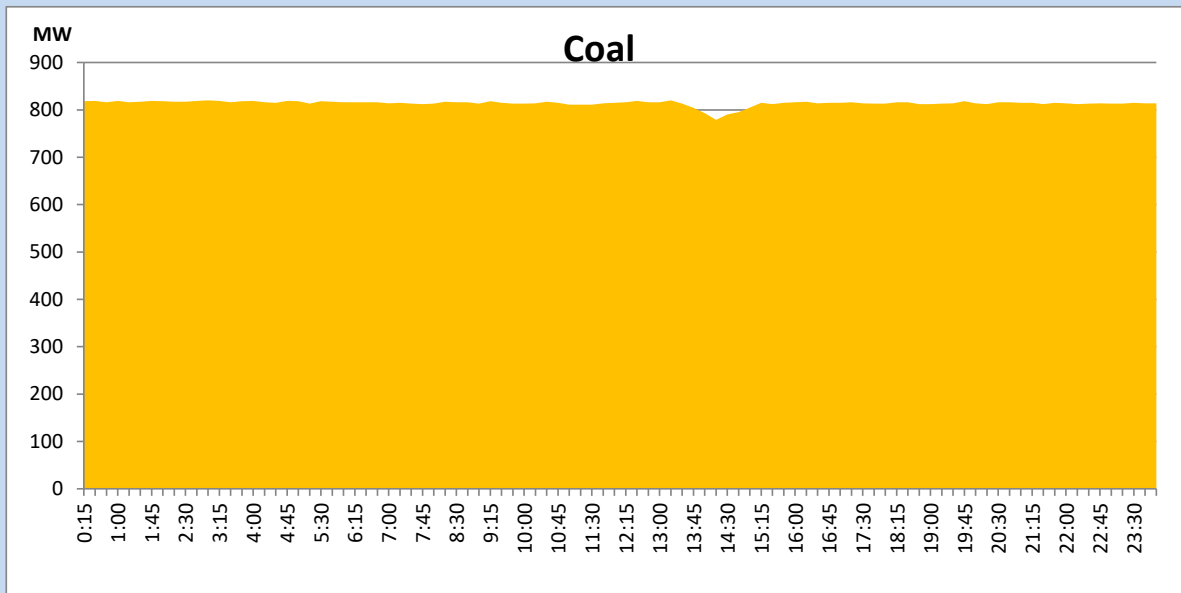
March 20, 2022

Solar and wind data is based on Telemetered Power Stations only



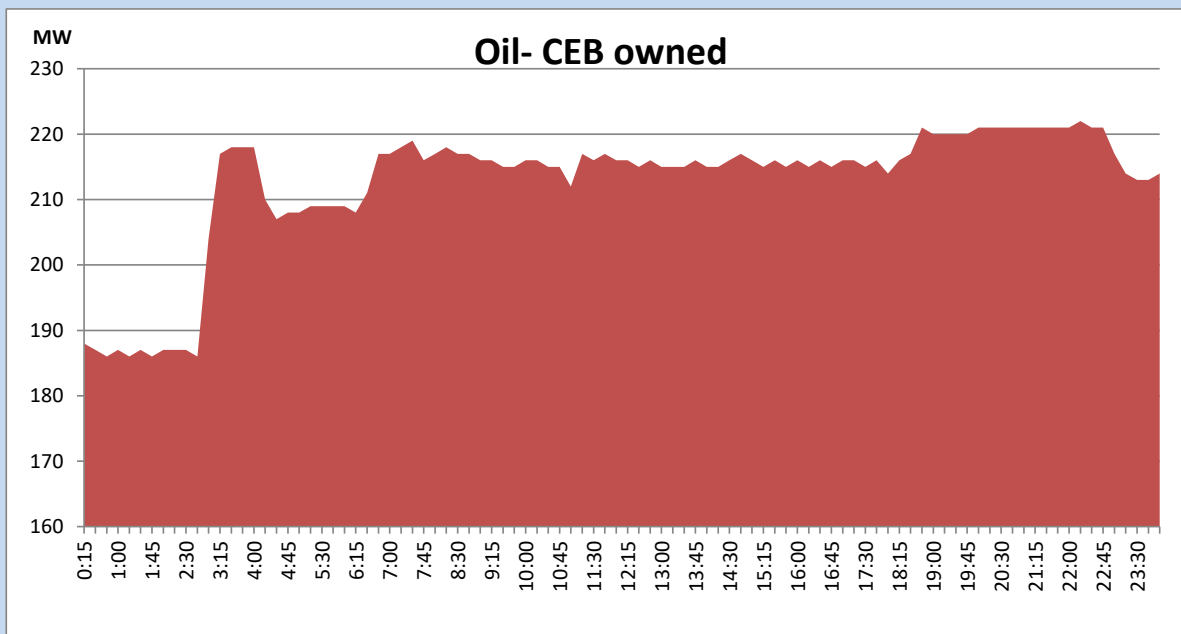
Coal Generation during the Previous day

March 20, 2022



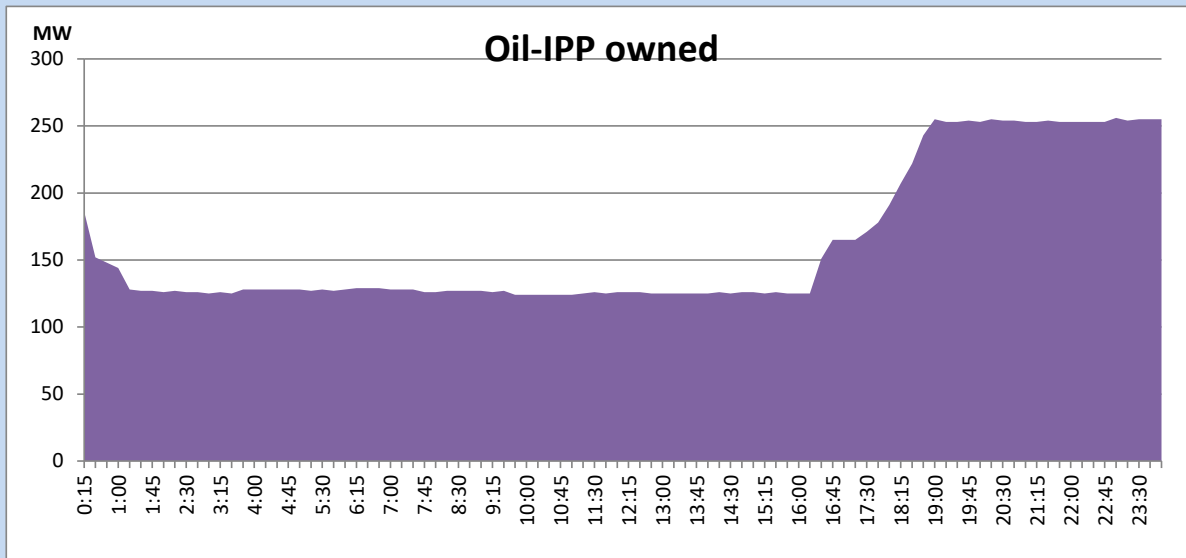
CEB Oil Plant Generation during the Previous day

March 20, 2022



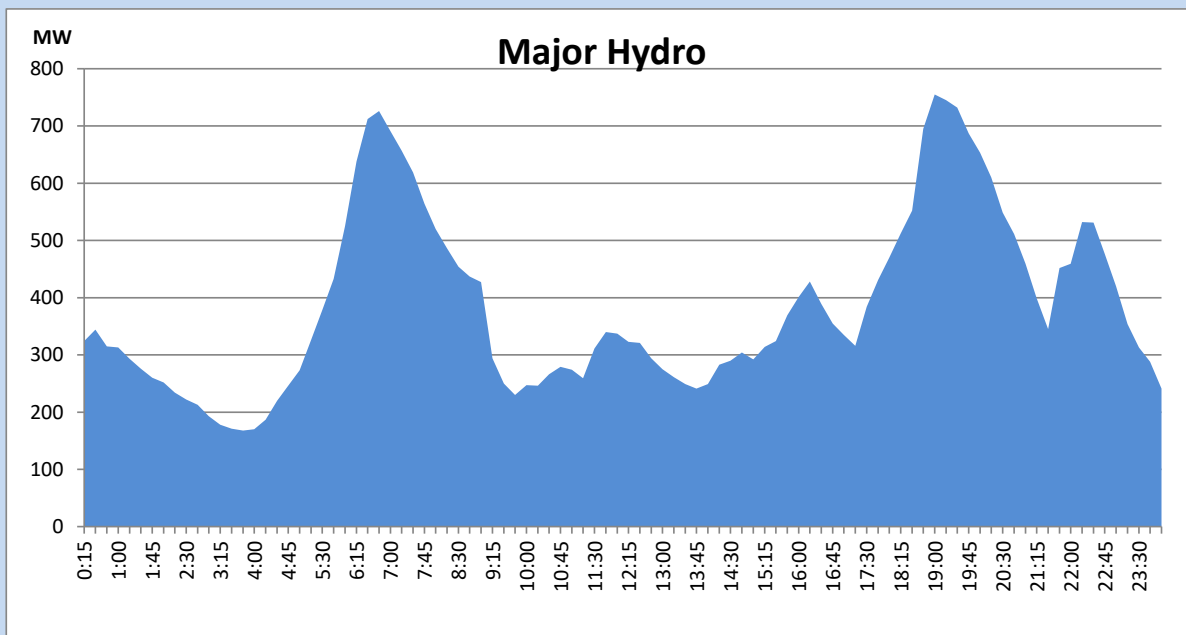
IPP Oil Plant Generation during the Previous day

March 20, 2022



Major Hydro Generation during the Previous day

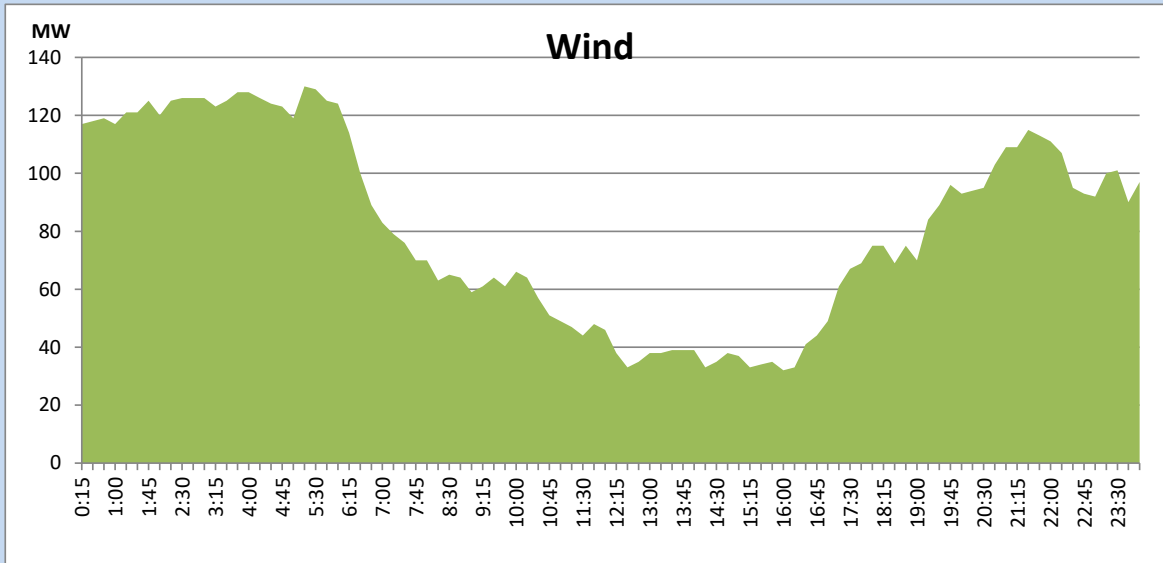
March 20, 2022



Wind Generation during the Previous day

March 20, 2022

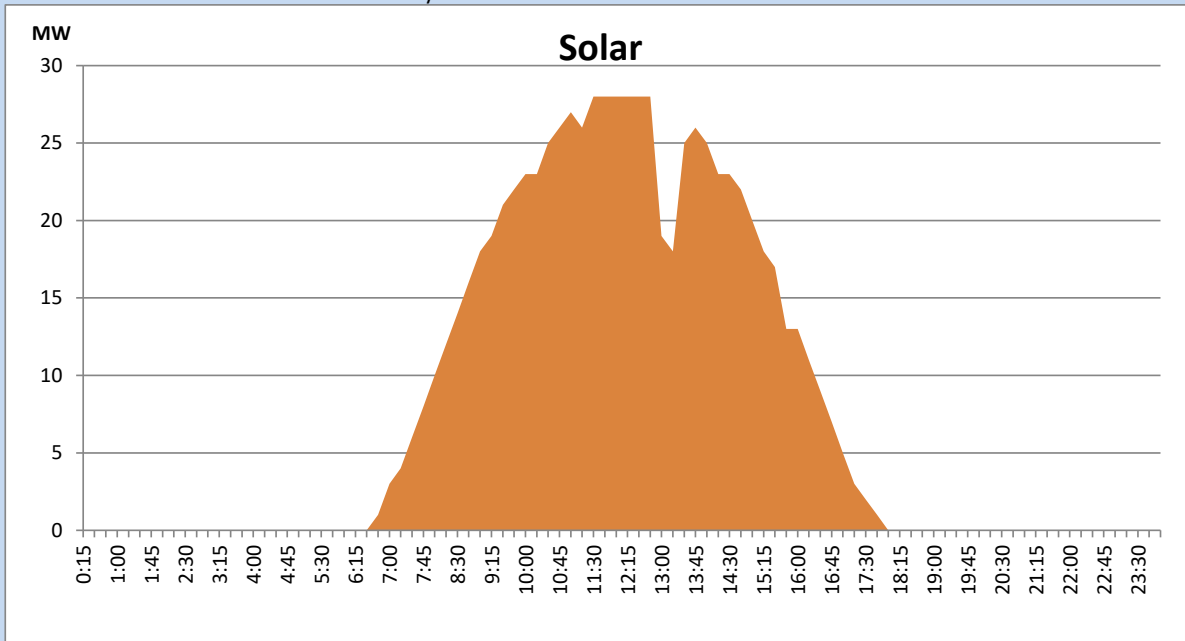
Based on Telemetered Power Stations only



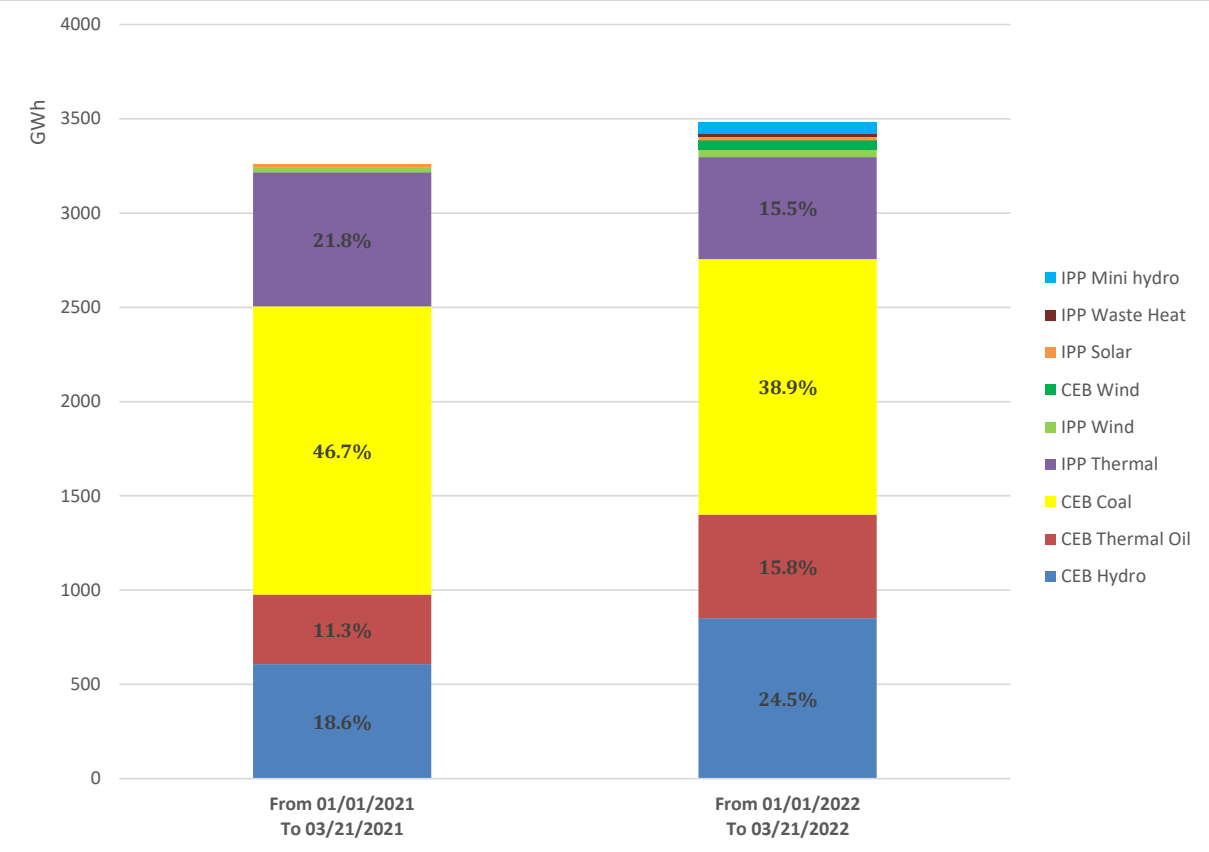
Solar Generation during the Previous day

March 20, 2022

Based on Telemetered Power Stations only



Cumulative Dispatch Comparison with Last Year



Thermal Plant Fuel types

Power Station	Primary Fuel
CEB Thermal	
Sapugaskanda 1	Heavy Fuel
Sapugaskanda 2	Heavy Fuel
Kelanitissa Small Gas Turbines	Auto Diesel
GT 7 - Kelanitissa	Auto Diesel
Kelanitissa CCY	Naphtha & Diesel
Lakvijaya 1	Coal
Lakvijaya 2	Coal
Lakvijaya 3	Coal
Uthuru Janani	Heavy Fuel
Barge CEB	Heavy Fuel

Power Station	Primary Fuel
Private Thermal	
Sojitz - Kelanitissa	Auto Diesel
West Coast	Heavy Fuel

Major Incidents during the day -as reported by CEB morning of

March 22, 2022

- 1) Rotational manual load shedding was carried out from 08:00hrs to 23:00hrs.
- 2) Polpitiya Gen 01 tripped at 06:31hrs due to operation of stator E/F protection. Polp Gen 01 resumed generation at 14:30hrs.
- 3) LVPS unit 03 availability limited to 210 MW from 08:15hrs to 13:45hrs due to blockage in cooling water intake .
- 4) Sojitz plant performed a forced shutdown at 01:59hrs on 22.03.2022 due to lack of fuel.