

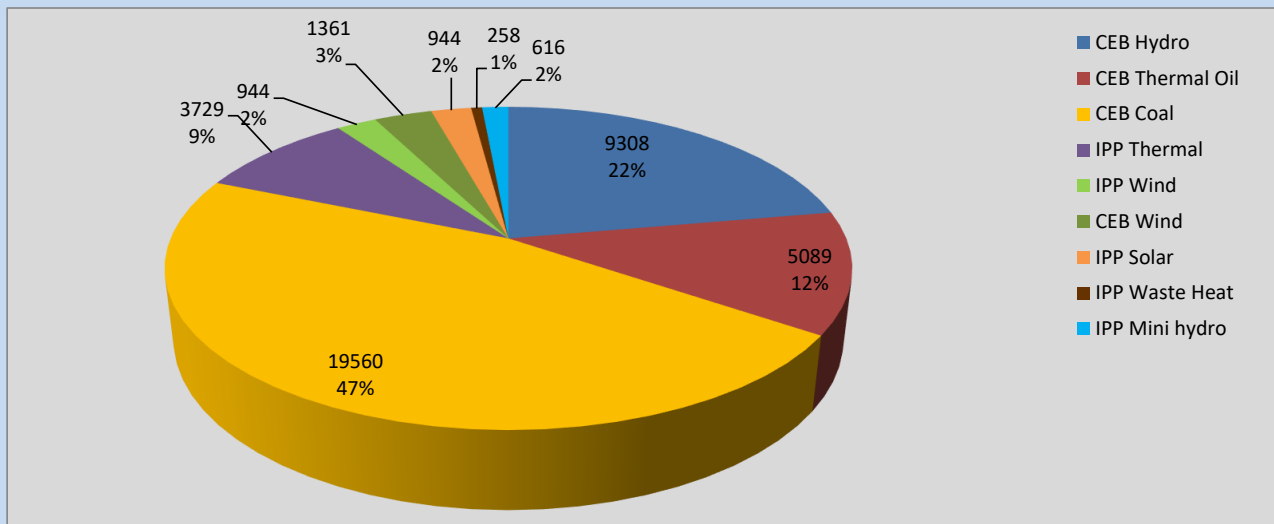
Generation and Reservoirs Statistics

March 20, 2022



PUBLIC UTILITIES COMMISSION OF SRI LANKA

Daily Generation Mix in MWh



Total Generation

41,189 MWh

Note: Above data is excluding contribution from Roof Top Solar, 1MW Solar and certain Mini Hydro plants

Cumulative Dispatch

Note: Following data is Excluding contribution from Roof Top Solar, 1MW solar and Mini Hydro plants

For Current Month

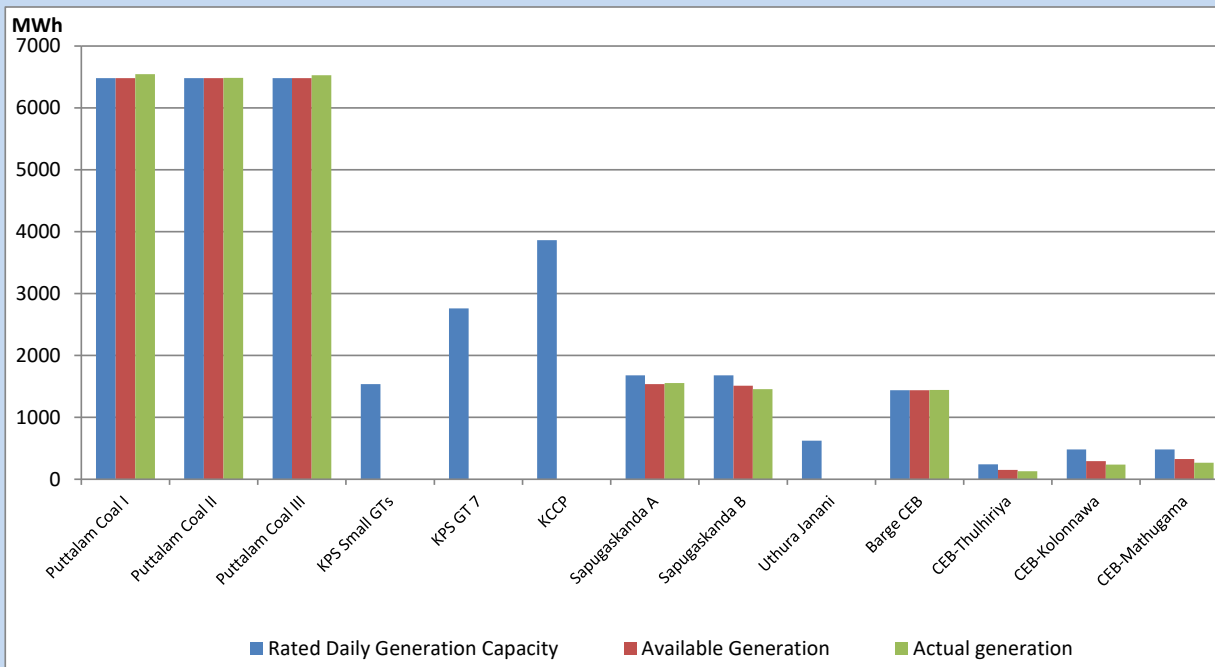
Category	Dispatch (GWh)	Percentage
CEB Hydro	165.04	18.86%
CEB Thermal Oil	132.44	15.14%
CEB Coal	391.86	44.79%
IPP Thermal	140.98	16.11%
SPP Wind	9.79	1.12%
CEB Wind	13.69	1.56%
SPP Solar	5.04	0.58%
SPP Solid Waste	4.66	0.53%
Mini Hydro	11.42	1.31%
Total	874.92	

For Current Year

Category	Dispatch (GWh)	Percentage
CEB Hydro	842.9	24.51%
CEB Thermal Oil	544.7	15.84%
CEB Coal	1,335.4	38.84%
IPP Thermal	532.4	15.49%
SPP Wind	37.9	1.10%
CEB Wind	47.9	1.39%
SPP Solar	20.3	0.59%
SPP Solid Waste	15.8	0.46%
Mini Hydro	61.1	1.78%
Total	3,438.2	

CEB owned Thermal Plant Dispatch

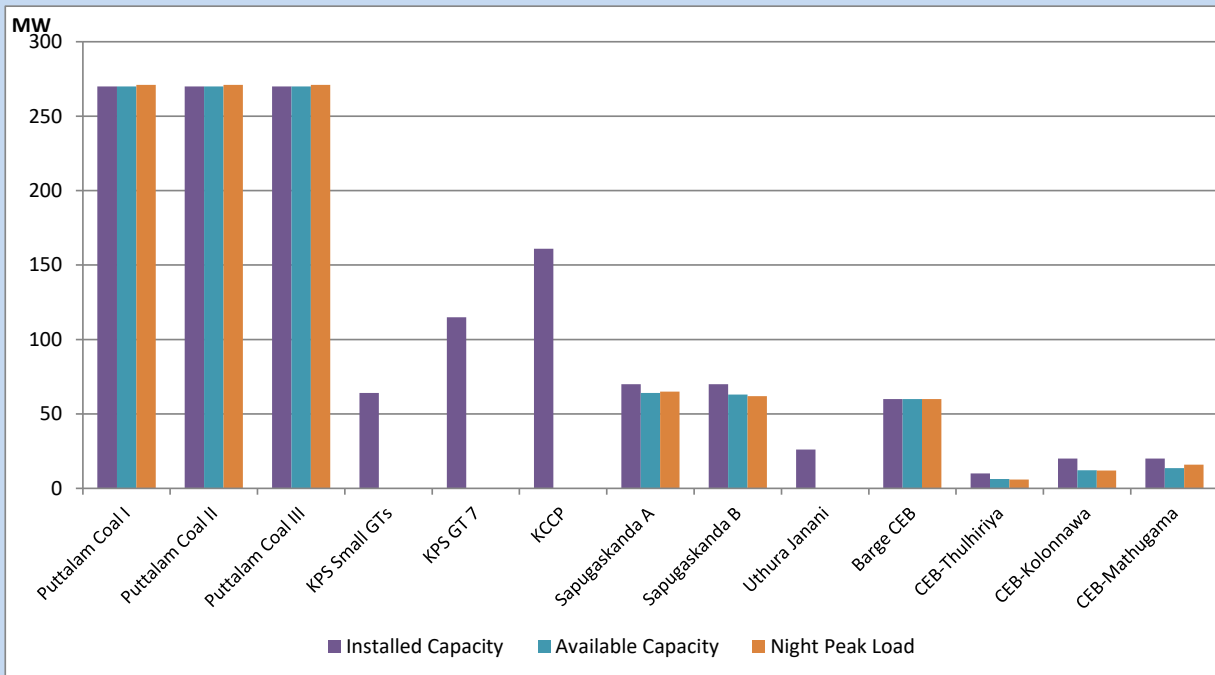
March 20, 2022



Available Generation is estimated based on plant availability at 6.00am on

March 21, 2022

CEB owned Thermal Plant Loading at the Night Peak



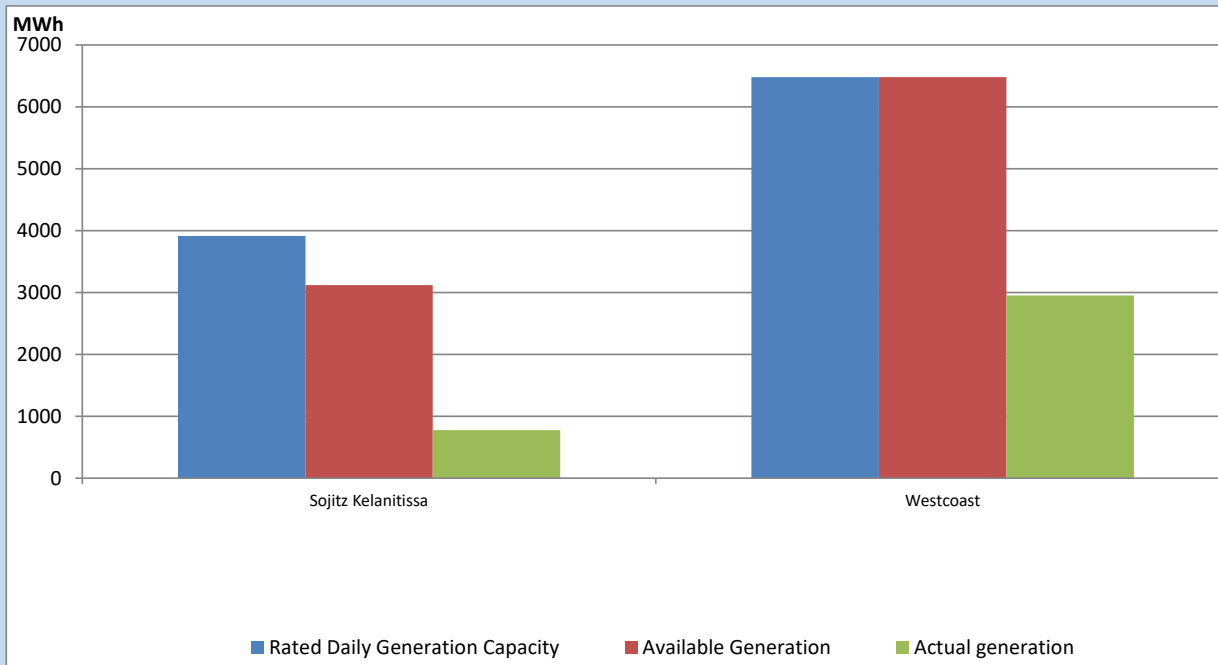
Note- Plant availability is recorded at 6.00 am on

March 21, 2022

IPP owned Thermal Plant Dispatch

March 20, 2022

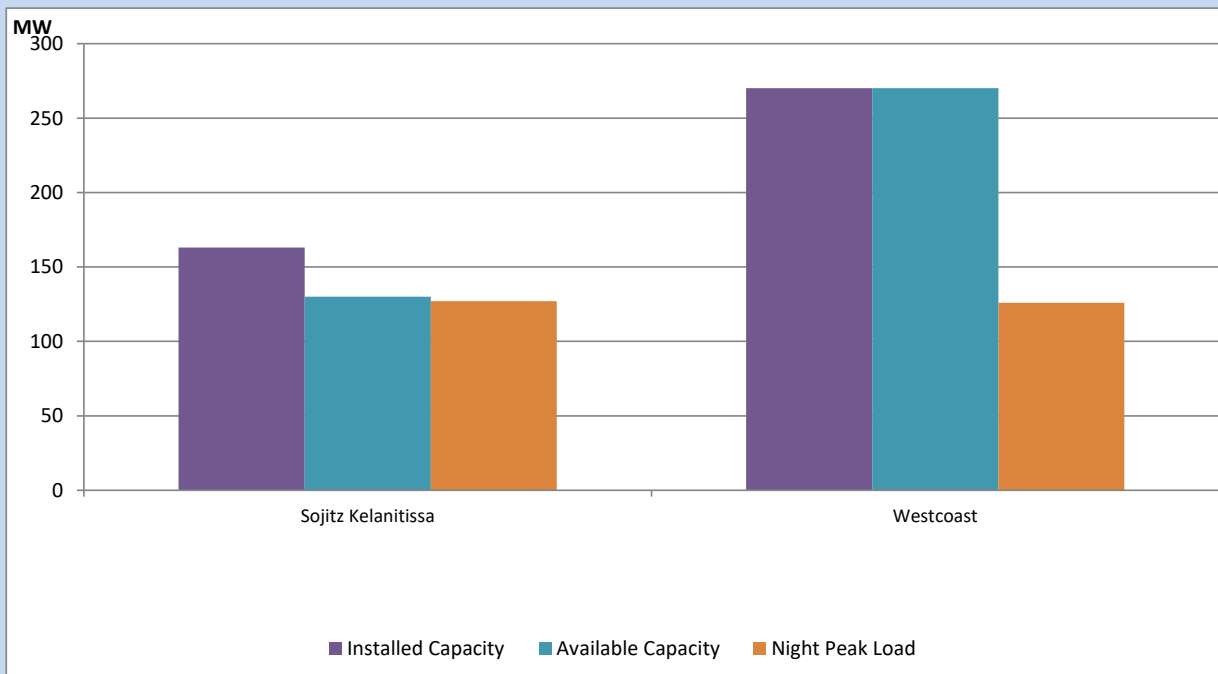
ACE Embilipitiya, ACE Matara, Asia Power, V Power Pallekale, Vpower Galle, V Power Horana, Vpower Hambantota, Vpower Valachchena and Altaqa Mahiyanganaya are not available due to expiration of PPAs



Available Generation is estimated based on plant availability at 6.00am on

March 21, 2022

IPP owned Thermal Plant Loading at the Night Peak

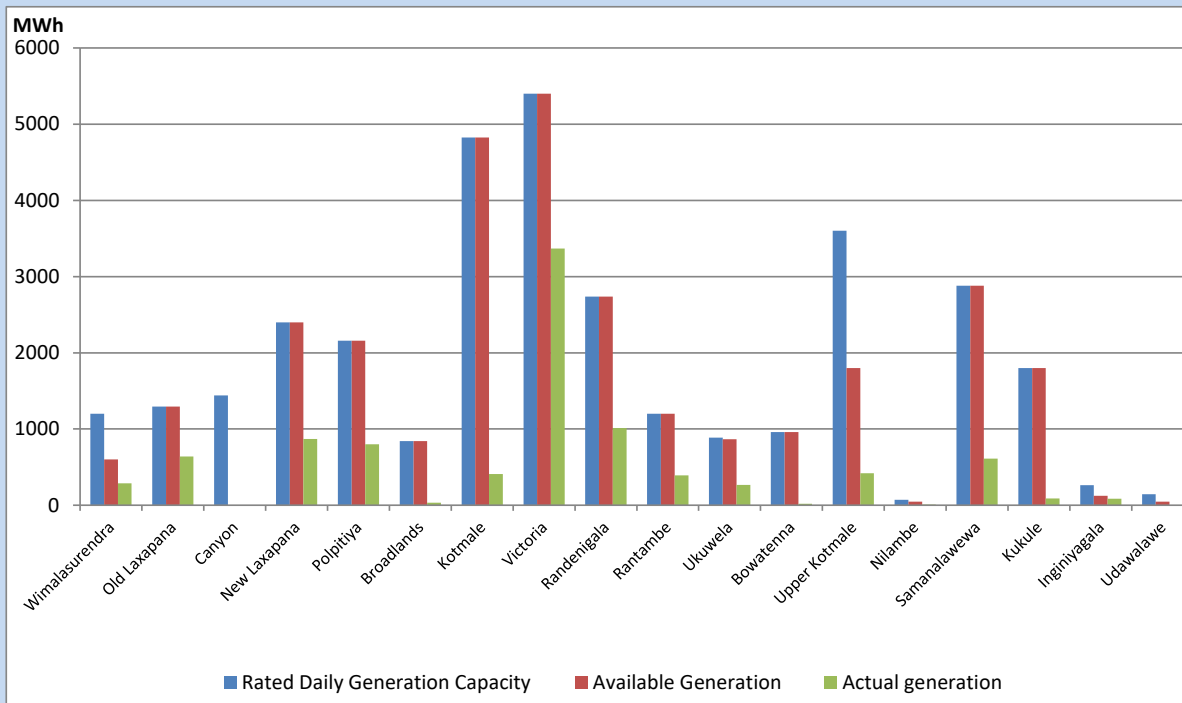


Note- Plant availability is recorded at 6.00 am on

March 21, 2022

Major Hydro Plant Dispatch

March 20, 2022

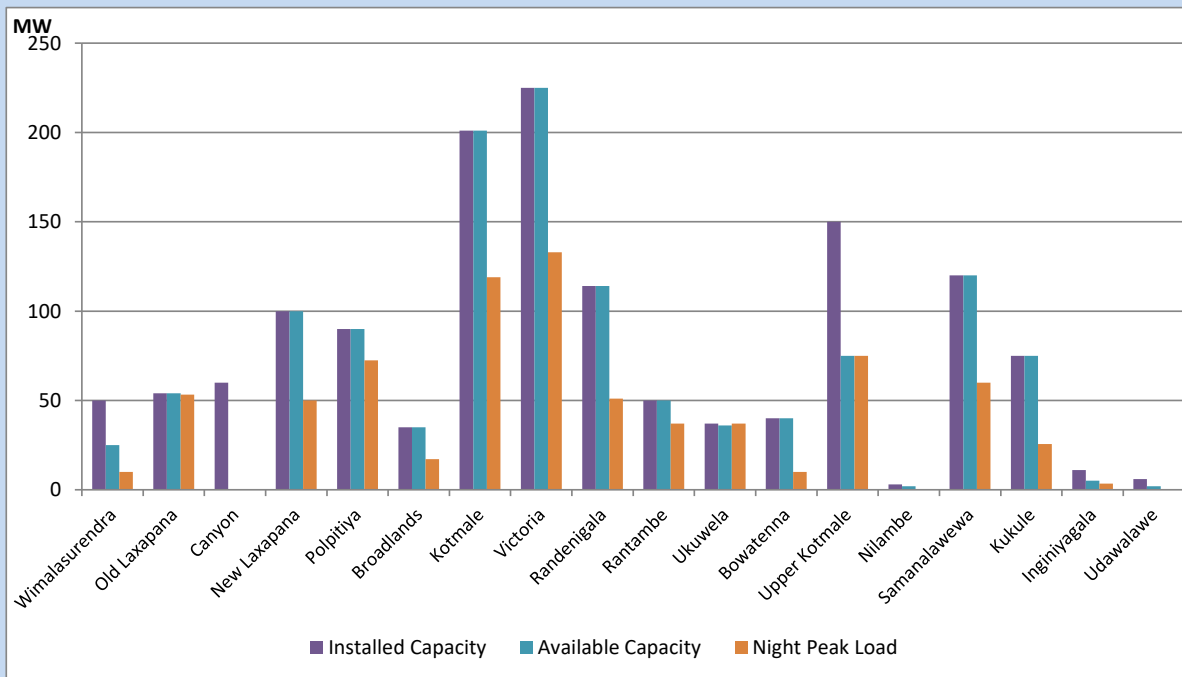


Available Generation is estimated based on plant availability at 6.00am on
Broadlands power plant is operating in the Commissioning Stage

March 21, 2022

Major Hydro Plant Loading at Night Peak

March 20, 2022



Note- Plant availability is recorded at 6.00 am on
Broadlands power plant is operating in the Commissioning Stage

March 21, 2022

Summary of Major Plant performance

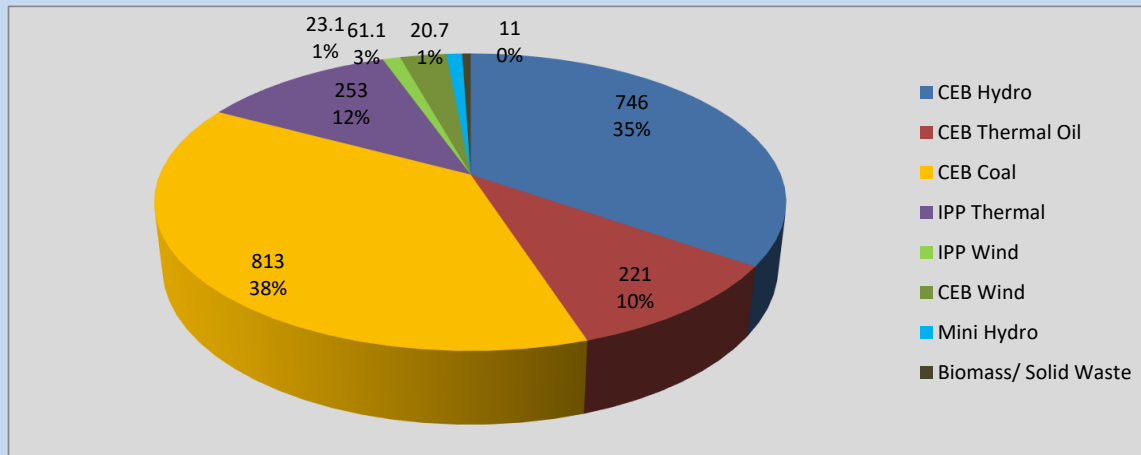
Plant	Installed Capacity	Plant Availability	Night peak Load	Plant Dispatch
	(MW)	(MW)	(MW)	(MWh)
Wimalasurendra	50	25	10	286
Old Laxapana	54	54	53	640
Canyon	60	0	0	0
New Laxapana	100	100	50	868
Polpitiya	90	90	73	801
Broadlands	35	35	17	33
Kotmale	201	201	119	410
Victoria	225	225	133	3,367
Randenigala	114	114	51	1,013
Rantambe	50	50	37	393
Ukuwela	37	36	37	265
Bowatenna	40	40	10	20
Upper Kotmale	150	75	75	421
Nilambe	3	2	0	9
Samanalawewa	120	120	60	610
Kukule	75	75	26	88
Inginiyagala	11	5	4	84
Udawalawe	6	2	0	0
Puttalam Coal I	270	270	271	6,544
Puttalam Coal II	270	270	271	6,487
Puttalam Coal III	270	270	271	6,529
KPS Small GTs	64	0	0	0
KPS GT 7	115	0	0	0
KCCP	161	0	0	0
Sapugaskanda A	70	64	65	1,555
Sapugaskanda B	70	63	62	1,454
Uthura Janani	26	0	0	0
Barge CEB	60	60	60	1,445
CEB-Thulhiriya	10	6	6	128
CEB-Kolonnawa	20	12	12	238
CEB-Mathugama	20	14	16	269
Sojitz Kelanitissa	163	130	127	778
West Coast	270	270	126	2,951
Total	3,280	2,678	2,157	41,189

Plant availability is the availability recorded at 6 am on

March 21, 2022

Contribution to the Night Peak in MW

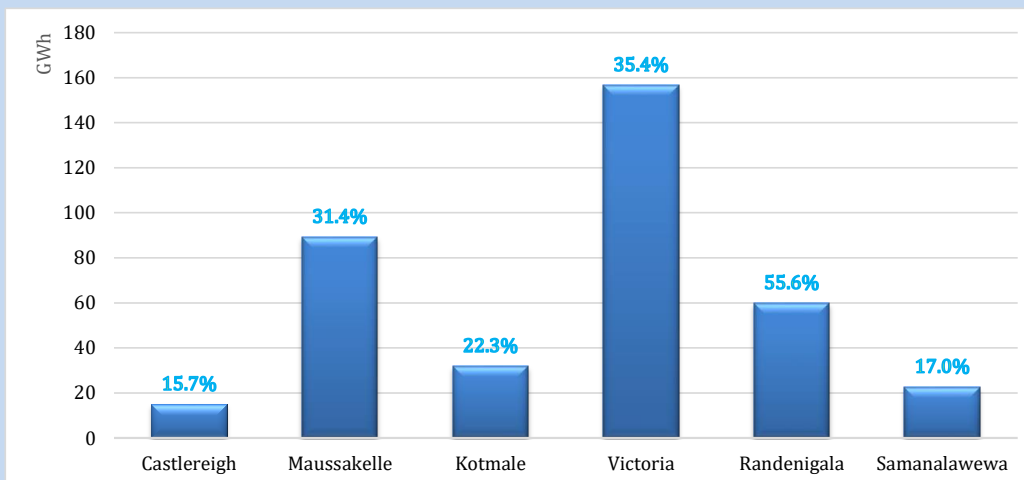
March 20, 2022



Night Peak*	2,148.9 MW
Day Peak	1,639.2 MW
Minimum Demand	1,503.8 MW

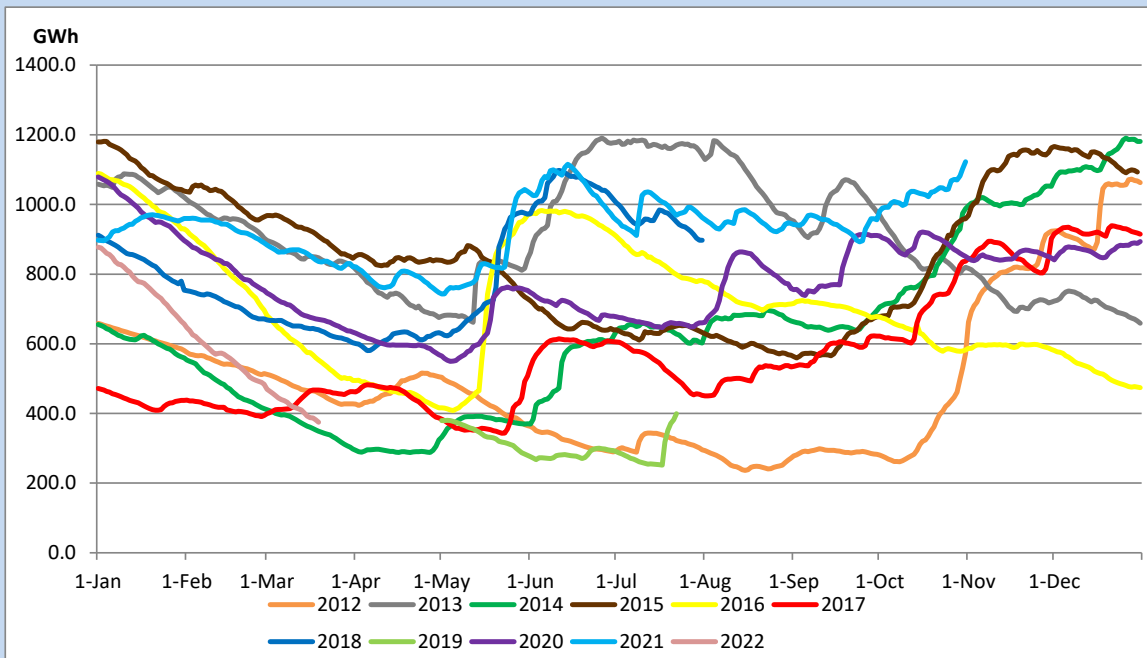
Above figures are excluding contribution from Roof Top Solar, 1MW solar, certain Wind plants and Mini Hydro plants

Reservoir Levels - as at 06.00 Hr on March 21, 2022



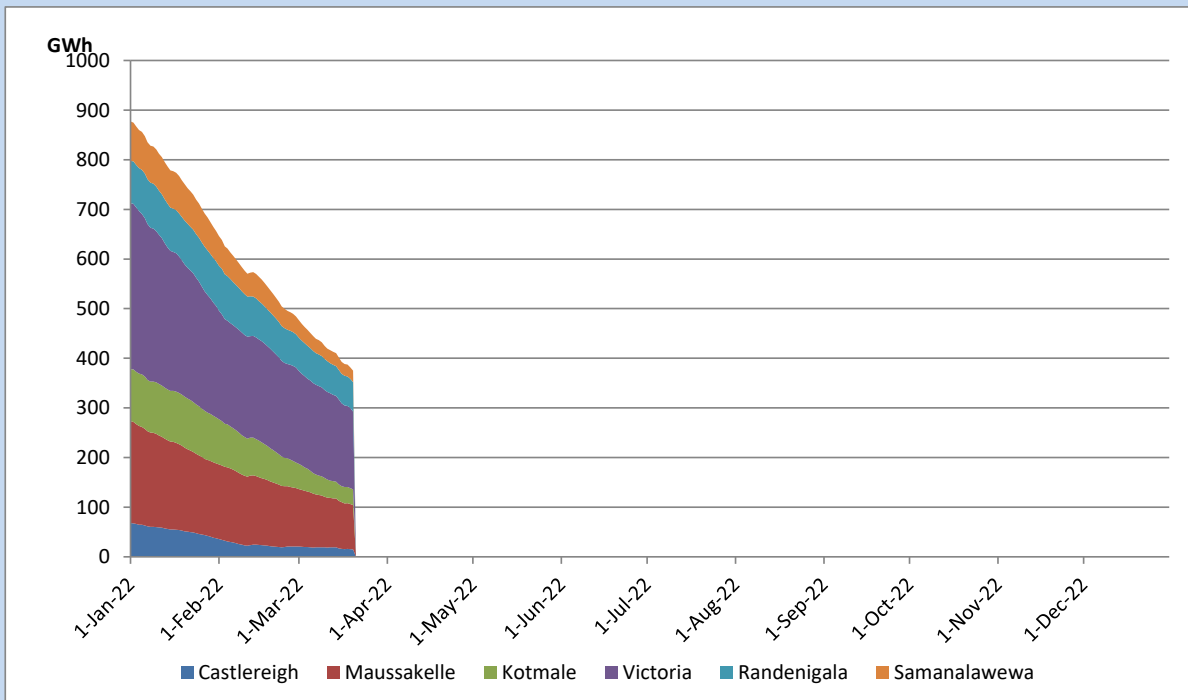
Total Reservoir Level	374.9 GWh
% of Total capacity	29.6%

Comparison of Total Reservoir Storage Levels with Past Years

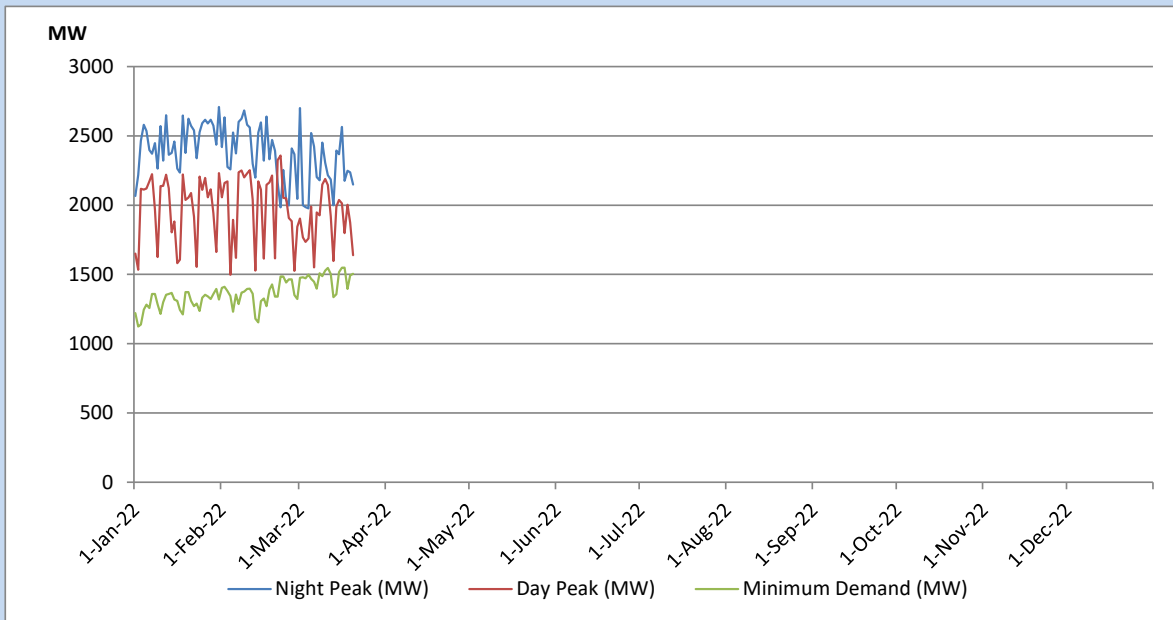


Data for 2018 and 2019 are only available for part of year.

Variation of Major Hydro Reservoir Levels in the current year (GWh)



Variation of Demand during the current year

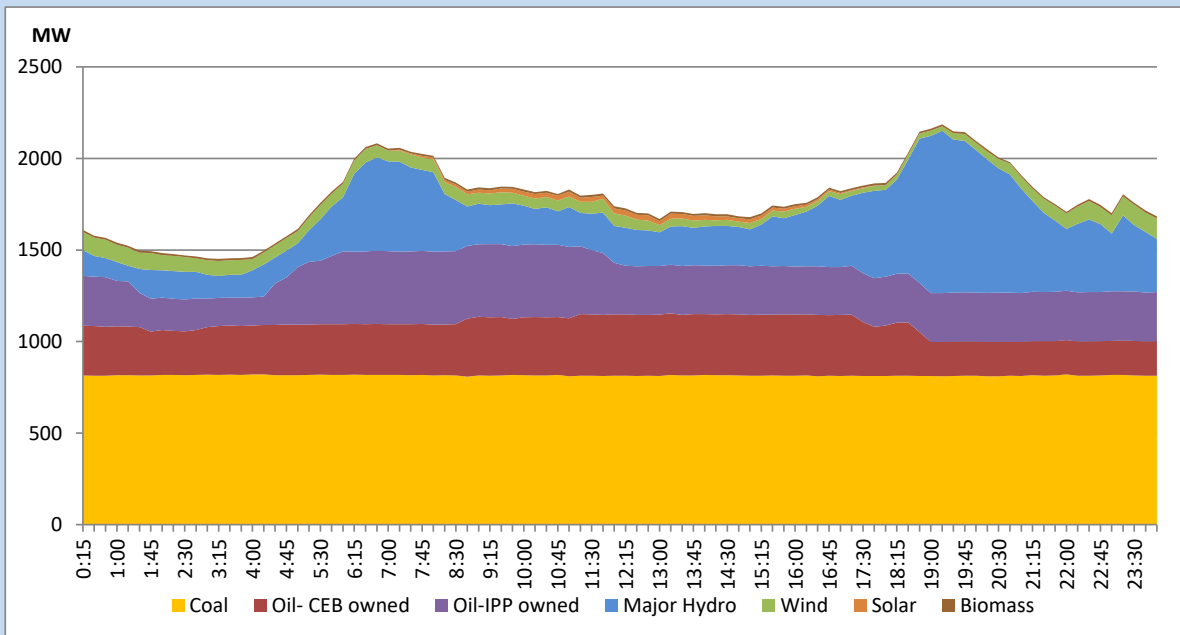


The above figures are excluding contribution from Roof Top Solar, 1MW solar, certain Wind plants and Mini Hydro plants

Daily Load Curve of the Previous day

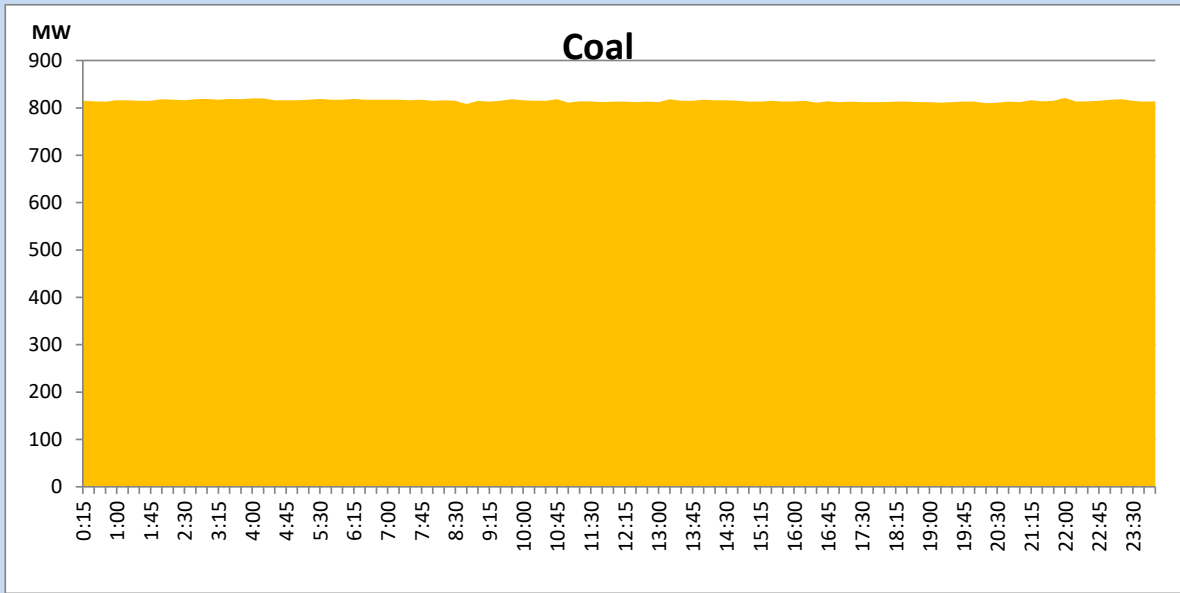
March 19, 2022

Solar and wind data is based on Telemetered Power Stations only



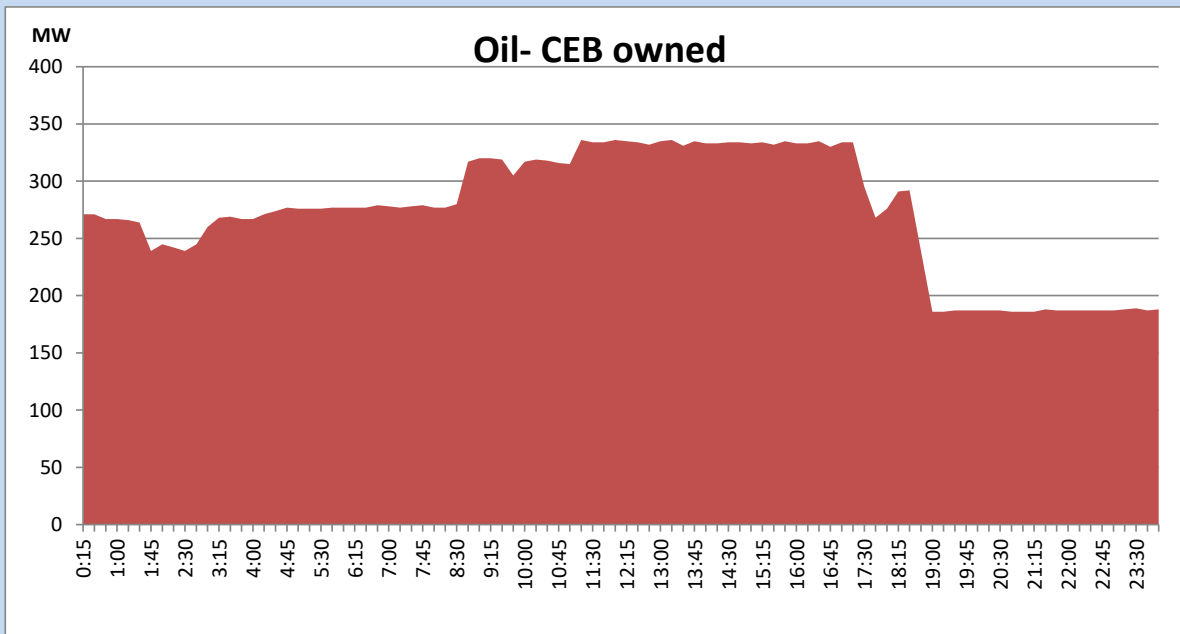
Coal Generation during the Previous day

March 19, 2022



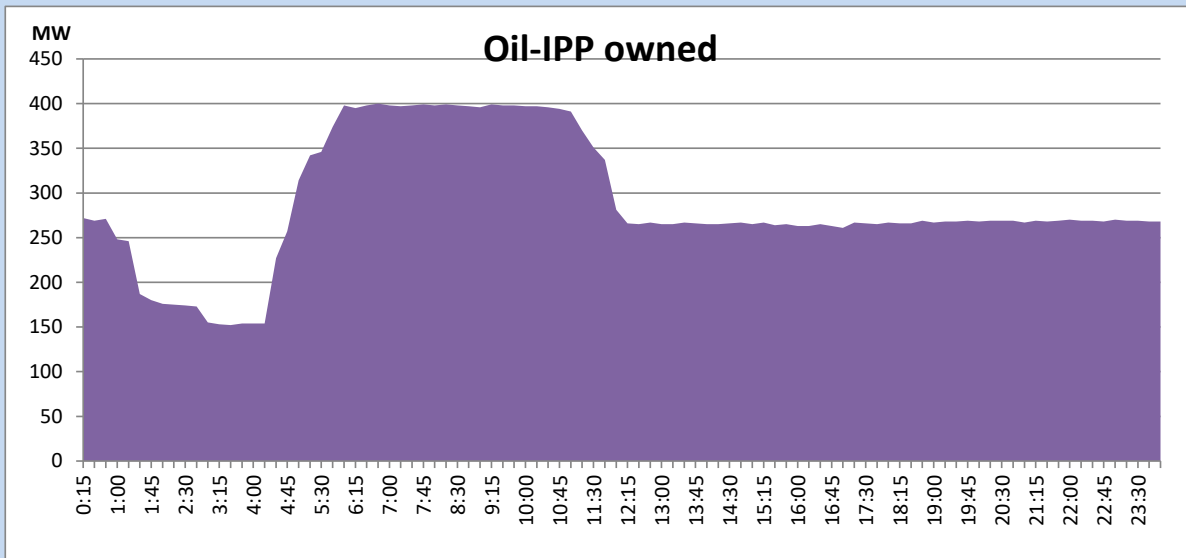
CEB Oil Plant Generation during the Previous day

March 19, 2022



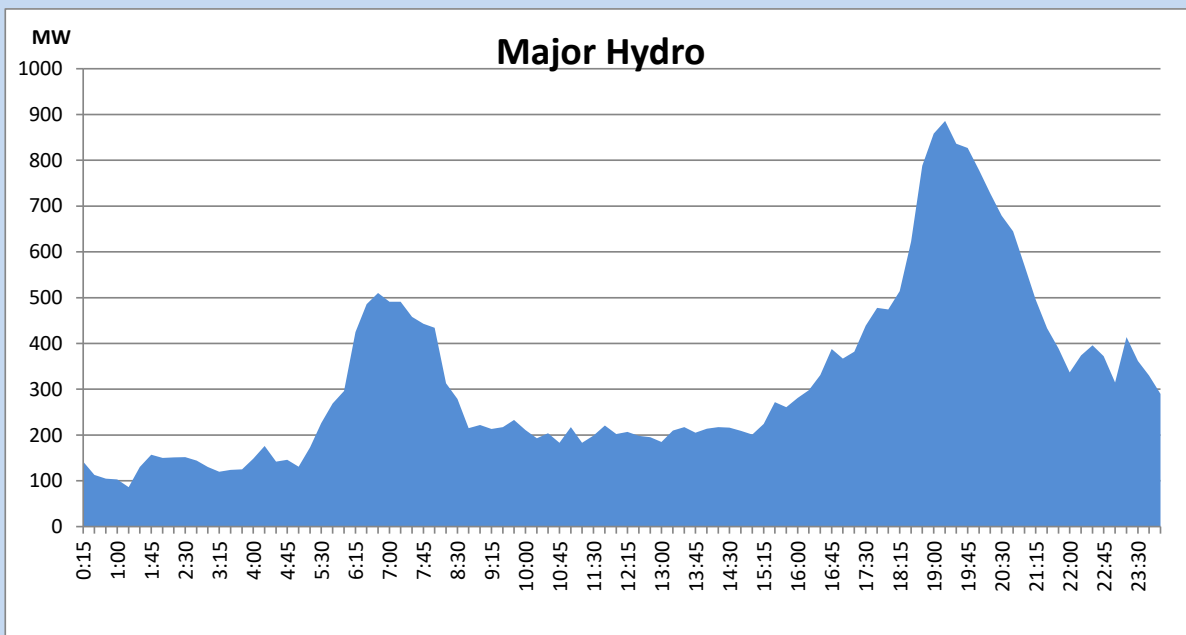
IPP Oil Plant Generation during the Previous day

March 19, 2022



Major Hydro Generation during the Previous day

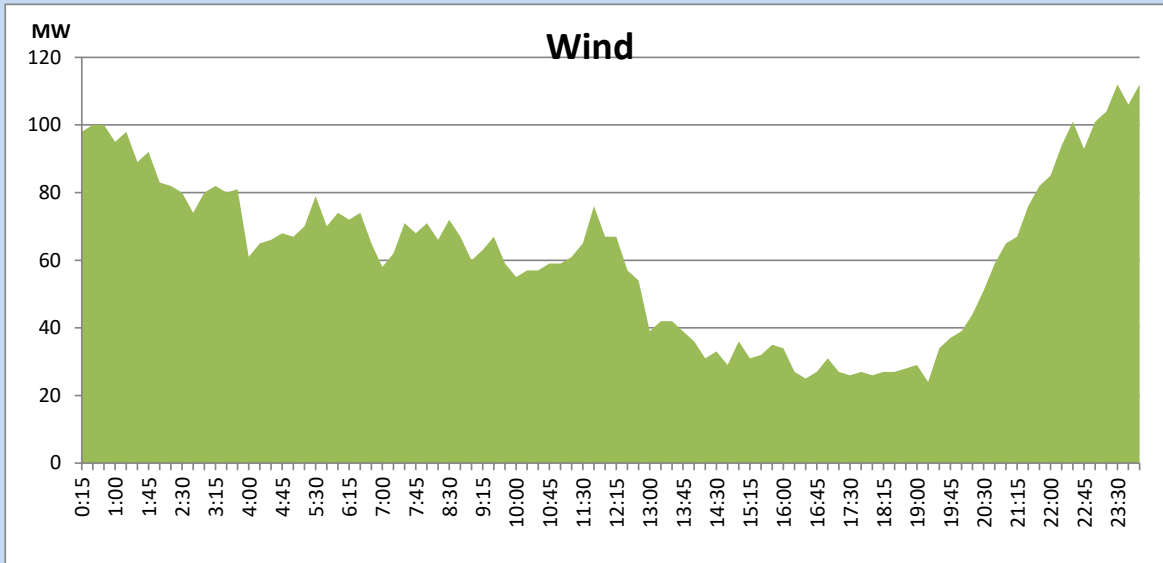
March 19, 2022



Wind Generation during the Previous day

March 19, 2022

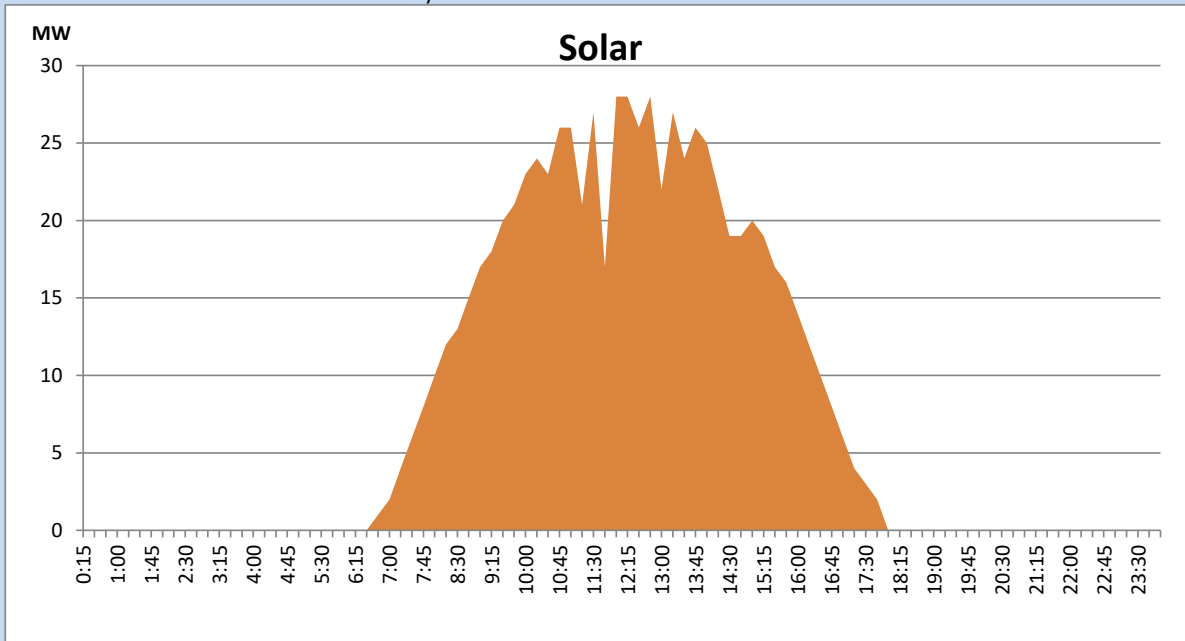
Based on Telemetered Power Stations only



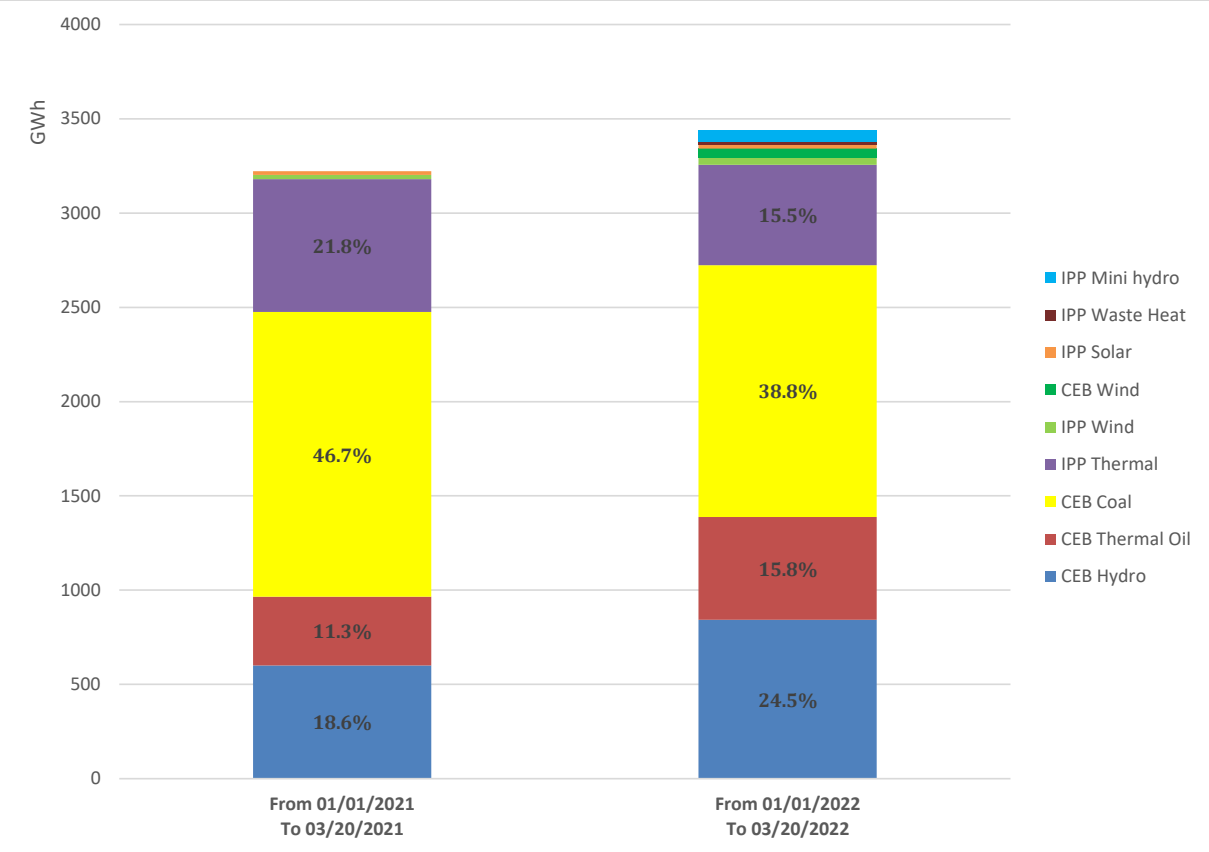
Solar Generation during the Previous day

March 19, 2022

Based on Telemetered Power Stations only



Cumulative Dispatch Comparison with Last Year



Thermal Plant Fuel types

Power Station	Primary Fuel
CEB Thermal	
Sapugaskanda 1	Heavy Fuel
Sapugaskanda 2	Heavy Fuel
Kelanitissa Small Gas Turbines	Auto Diesel
GT 7 - Kelanitissa	Auto Diesel
Kelanitissa CCY	Naphtha & Diesel
Lakvijaya 1	Coal
Lakvijaya 2	Coal
Lakvijaya 3	Coal
Uthuru Janani	Heavy Fuel
Barge CEB	Heavy Fuel

Power Station	Primary Fuel
Private Thermal	
Sojitz - Kelanitissa	Auto Diesel
West Coast	Heavy Fuel

Major Incidents during the day -as reported by CEB morning of

March 21, 2022

- 1) Rotational manual load shedding was carried out from 09:00hrs to 22:00hrs.