

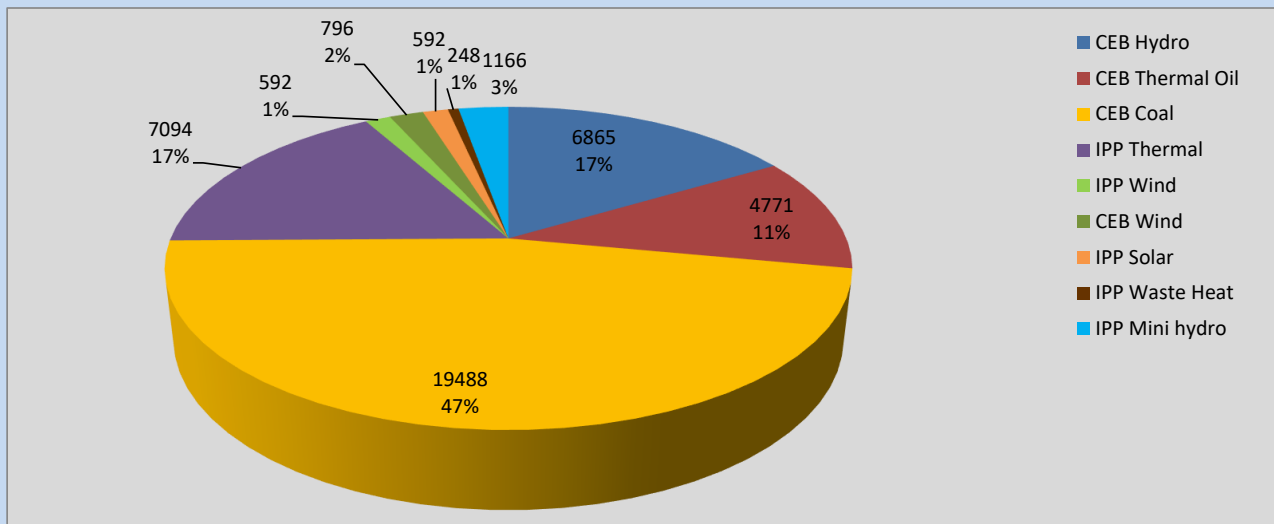
# Generation and Reservoirs Statistics

April 19, 2022



PUBLIC UTILITIES COMMISSION OF SRI LANKA

## Daily Generation Mix in MWh



**Total Generation** **41,176 MWh**

Note: Above data is excluding contribution from Roof Top Solar, 1MW Solar and certain Mini Hydro plants

## Cumulative Dispatch

Note: Following data is Excluding contribution from Roof Top Solar, 1MW solar and Mini Hydro plants

### For Current Month

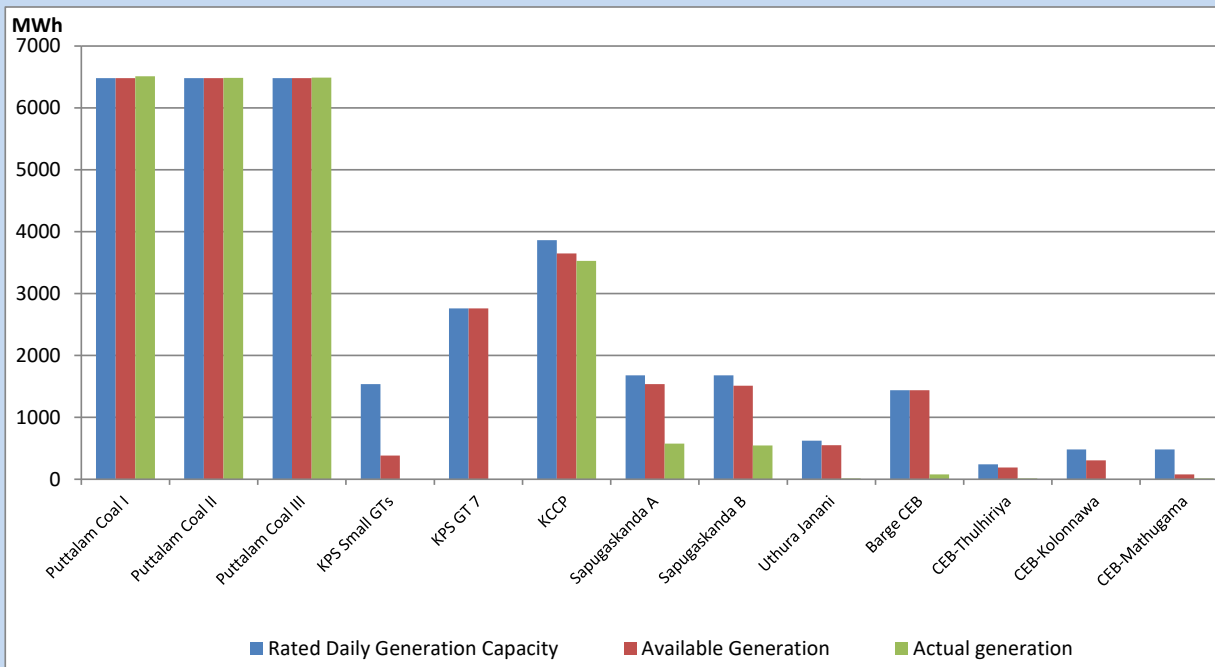
Category	Dispatch (GWh)	Percentage
CEB Hydro	136.30	20.23%
CEB Thermal Oil	65.41	9.71%
CEB Coal	358.00	53.13%
IPP Thermal	68.03	10.10%
SPP Wind	5.82	0.86%
CEB Wind	8.08	1.20%
SPP Solar	4.69	0.70%
SPP Solid Waste	3.79	0.56%
Mini Hydro	23.66	3.51%
<b>Total</b>	<b>673.78</b>	

### For Current Year

Category	Dispatch (GWh)	Percentage
CEB Hydro	1,066.2	23.22%
CEB Thermal Oil	706.6	15.39%
CEB Coal	1,908.5	41.56%
IPP Thermal	660.9	14.39%
SPP Wind	48.2	1.05%
CEB Wind	61.8	1.35%
SPP Solar	28.3	0.62%
SPP Solid Waste	21.5	0.47%
Mini Hydro	90.1	1.96%
<b>Total</b>	<b>4,591.9</b>	

## CEB owned Thermal Plant Dispatch

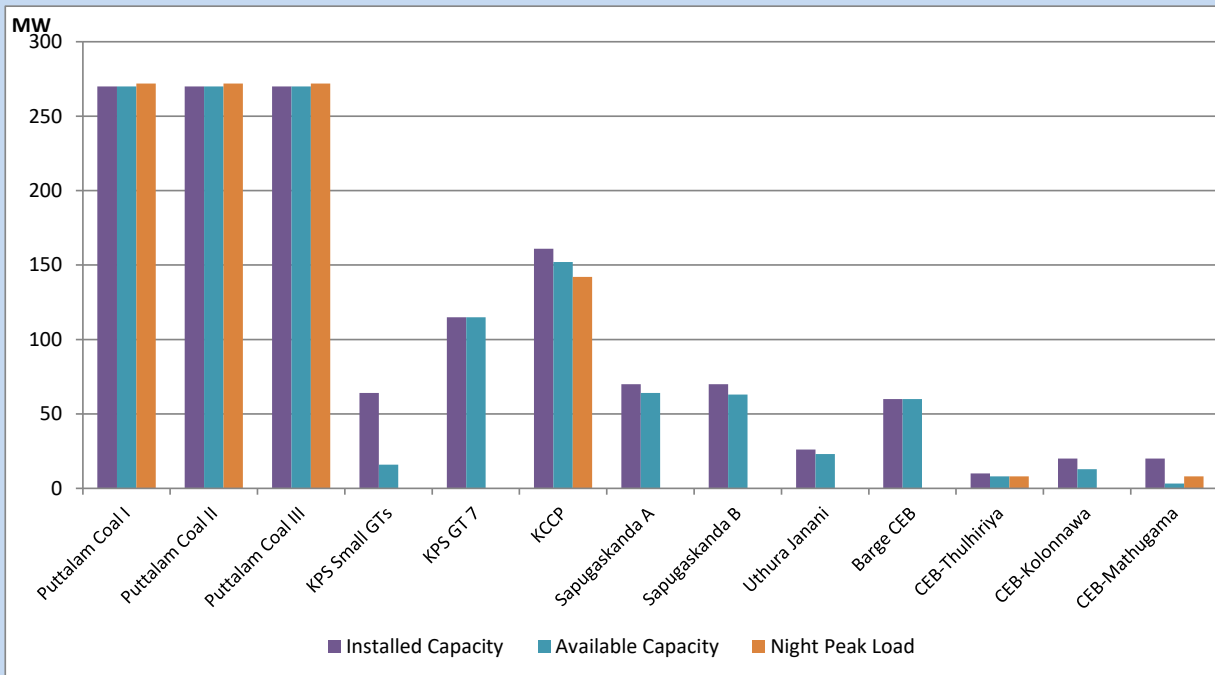
April 19, 2022



Available Generation is estimated based on plant availability at 6.00am on

April 20, 2022

## CEB owned Thermal Plant Loading at the Night Peak



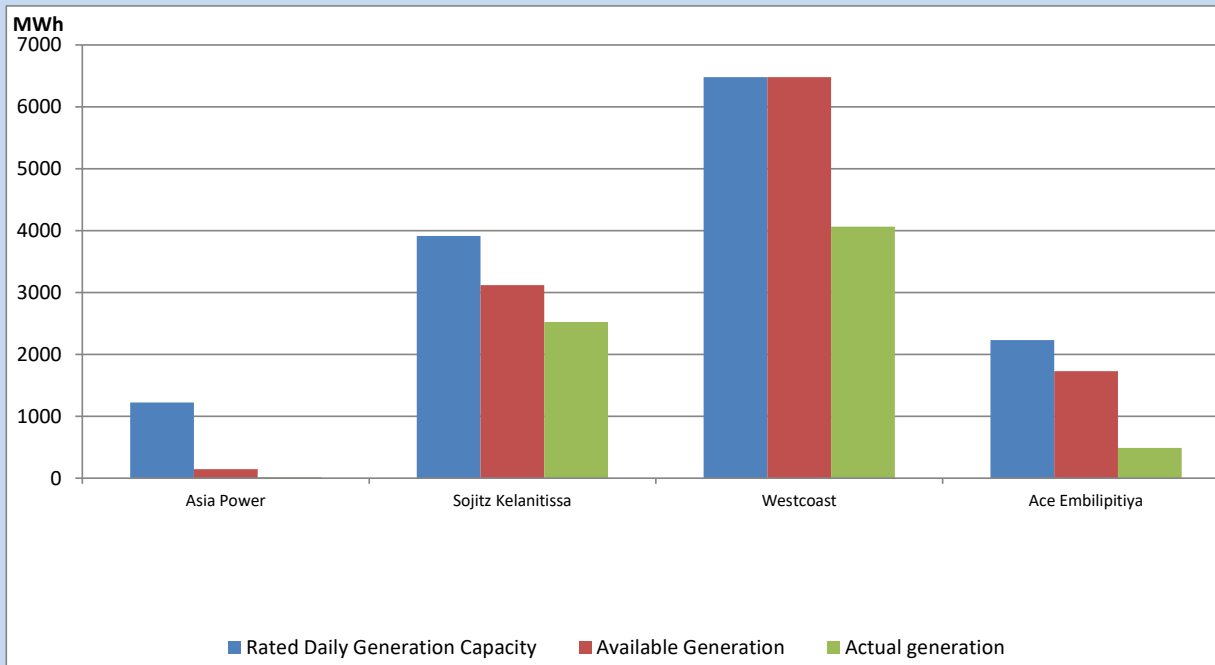
Note- Plant availability is recorded at 6.00 am on

April 20, 2022

## IPP owned Thermal Plant Dispatch

April 19, 2022

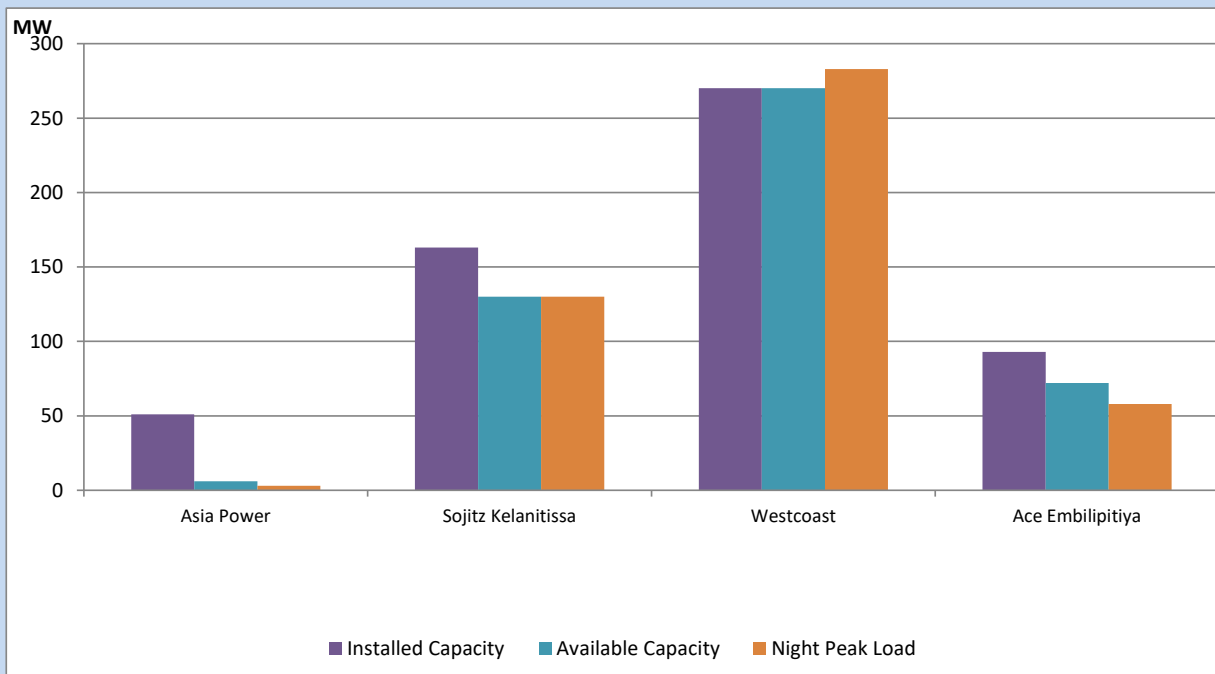
ACE Matara, V Power Pallekale, Vpower Galle, V Power Horana, Vpower Hambantota, Vpower Valachchena and Altaqa Mahiyanganaya are not available due to expiration of PPAs



Available Generation is estimated based on plant availability at 6.00am on

April 20, 2022

## IPP owned Thermal Plant Loading at the Night Peak

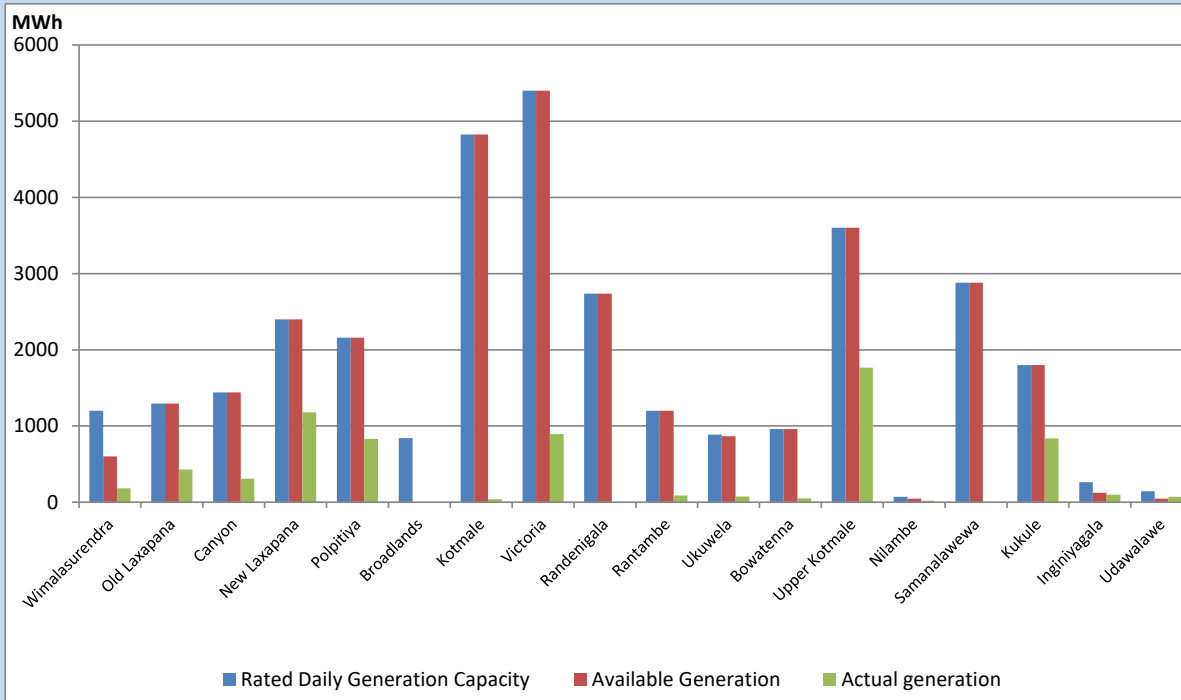


Note- Plant availability is recorded at 6.00 am on

April 20, 2022

## Major Hydro Plant Dispatch

April 19, 2022

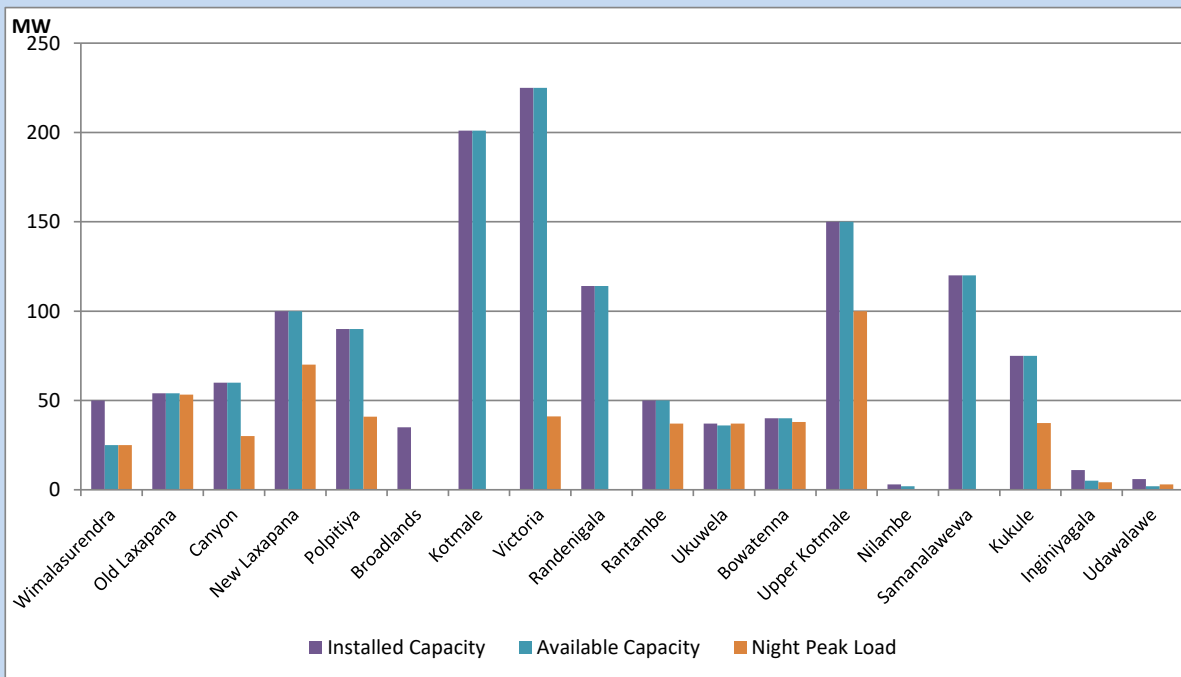


Available Generation is estimated based on plant availability at 6.00am on April 20, 2022  
 Broadlands power plant is operating in the Commissioning Stage

April 20, 2022

## Major Hydro Plant Loading at Night Peak

April 19, 2022



Note- Plant availability is recorded at 6.00 am on April 20, 2022  
 Broadlands power plant is operating in the Commissioning Stage

## Summary of Major Plant performance

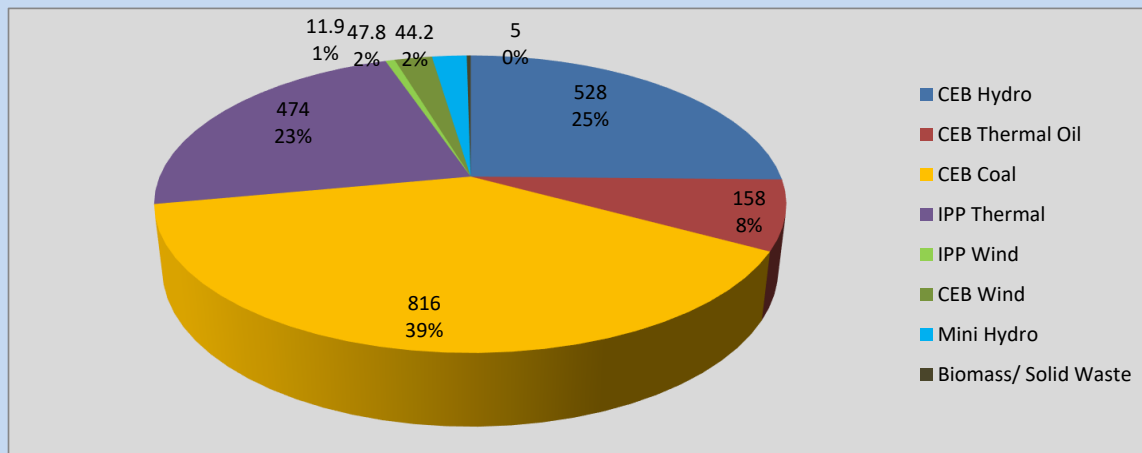
Plant	Installed Capacity	Plant Availability	Night peak Load	Plant Dispatch
	(MW)	(MW)	(MW)	(MWh)
Wimalasurendra	50	25	25	181
Old Laxapana	54	54	53	429
Canyon	60	60	30	308
New Laxapana	100	100	70	1,178
Polpitiya	90	90	41	831
Broadlands	35	0	0	0
Kotmale	201	201	0	40
Victoria	225	225	41	893
Randenigala	114	114	0	0
Rantambe	50	50	37	90
Ukuwela	37	36	37	73
Bowatenna	40	40	38	49
Upper Kotmale	150	150	100	1,764
Nilambe	3	2	0	20
Samanalawewa	120	120	0	0
Kukule	75	75	37	839
Inginiyagala	11	5	4	98
Udawalawe	6	2	3	72
Puttalam Coal I	270	270	272	6,513
Puttalam Coal II	270	270	272	6,485
Puttalam Coal III	270	270	272	6,490
KPS Small GTs	64	16	0	0
KPS GT 7	115	115	0	0
KCCP	161	152	142	3,528
Sapugaskanda A	70	64	0	577
Sapugaskanda B	70	63	0	545
Uthura Janani	26	23	0	15
Barge CEB	60	60	0	78
CEB-Thulhiriya	10	8	8	16
CEB-Kolonnawa	20	13	0	0
CEB-Mathugama	20	3	8	12
Asia Power	51	6	3	19
Sojitz Kelanitissa	163	130	130	2,523
West Coast	270	270	283	4,063
ACE Embilipitiya	93	72	58	489
<b>Total</b>	<b>3,424</b>	<b>3,154</b>	<b>2,074</b>	<b>41,176</b>

Plant availability is the availability recorded at 6 am on

April 20, 2022

## Contribution to the Night Peak in MW

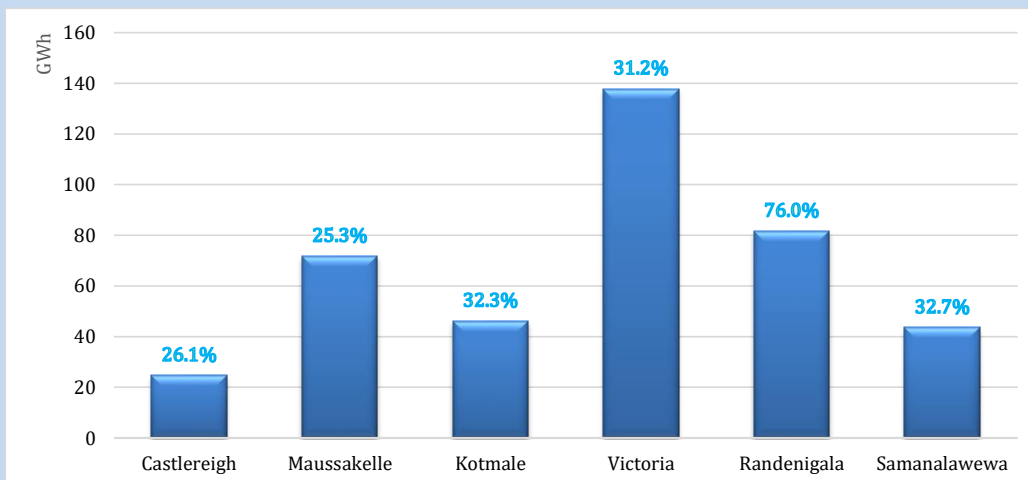
April 19, 2022



Night Peak*	2,084.7 MW
Day Peak	1,735.8 MW
Minimum Demand	1,365.0 MW

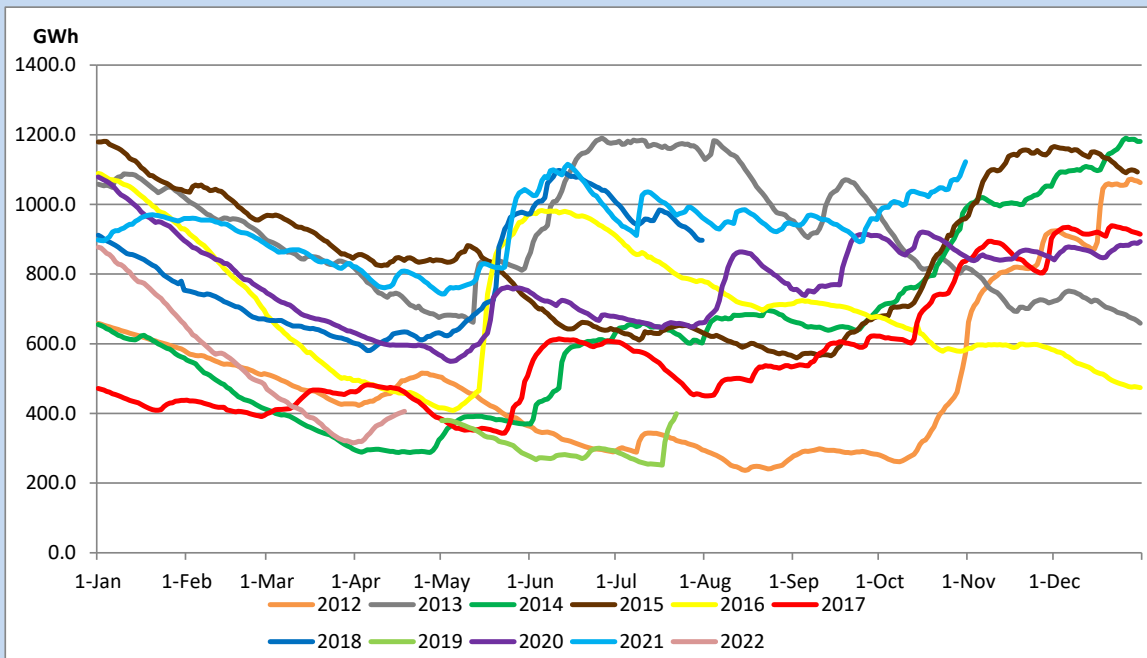
Above figures are excluding contribution from Roof Top Solar, 1MW solar, certain Wind plants and Mini Hydro plants

## Reservoir Levels - as at 06.00 Hr on April 20, 2022



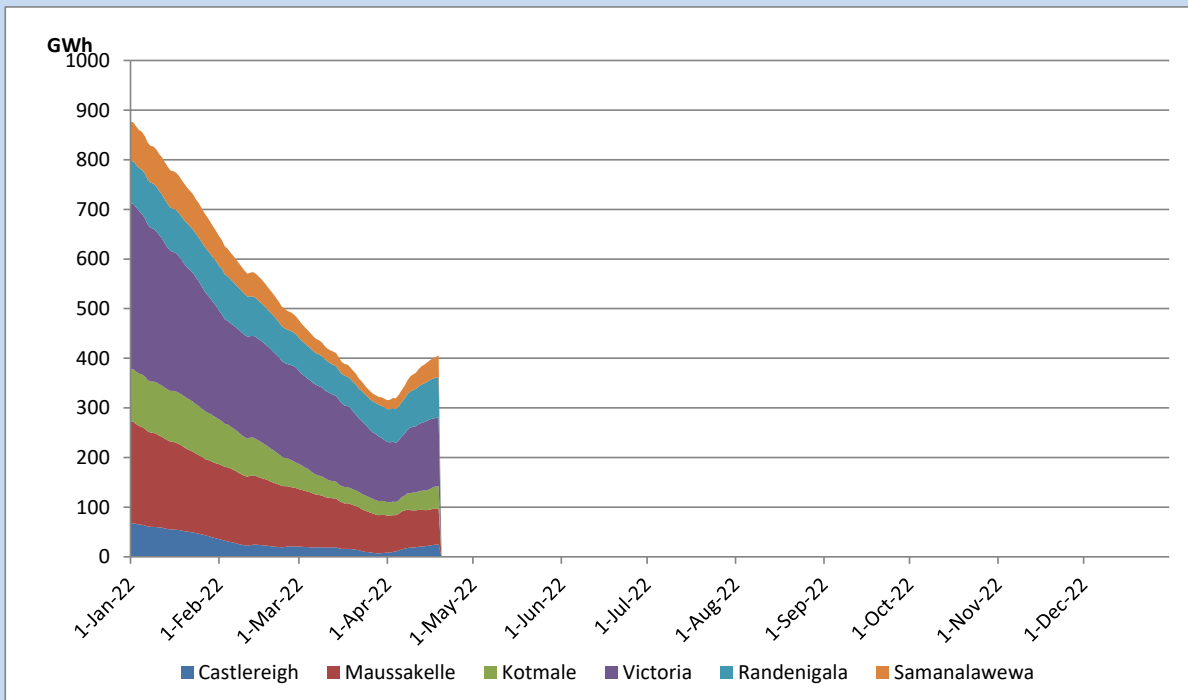
Total Reservoir Level	405.9 GWh
% of Total capacity	37.3%

## Comparison of Total Reservoir Storage Levels with Past Years



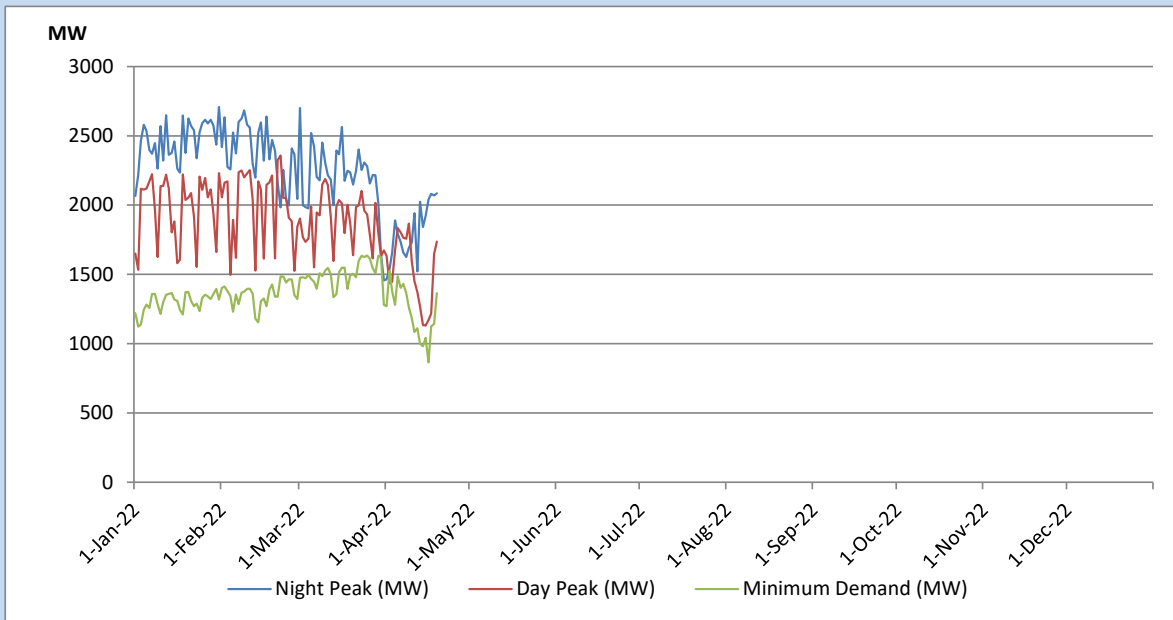
Data for 2018 and 2019 are only available for part of year.

## Variation of Major Hydro Reservoir Levels in the current year (GWh)





## Variation of Demand during the current year

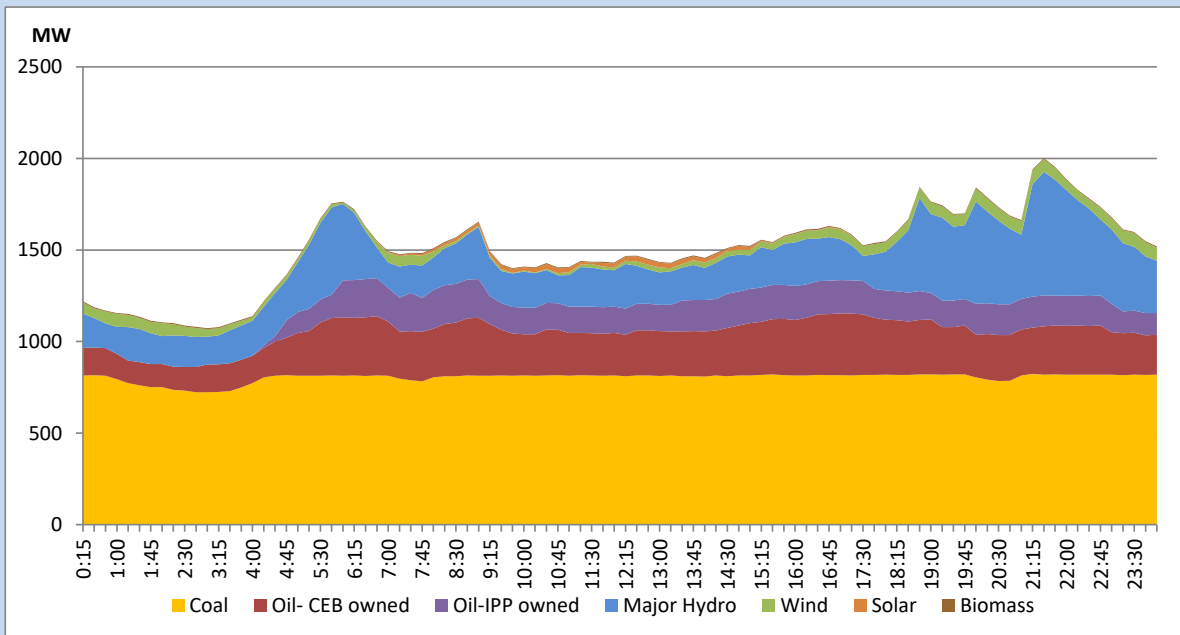


The above figures are excluding contribution from Roof Top Solar, 1MW solar, certain Wind plants and Mini Hydro plants

## Daily Load Curve of the Previous day

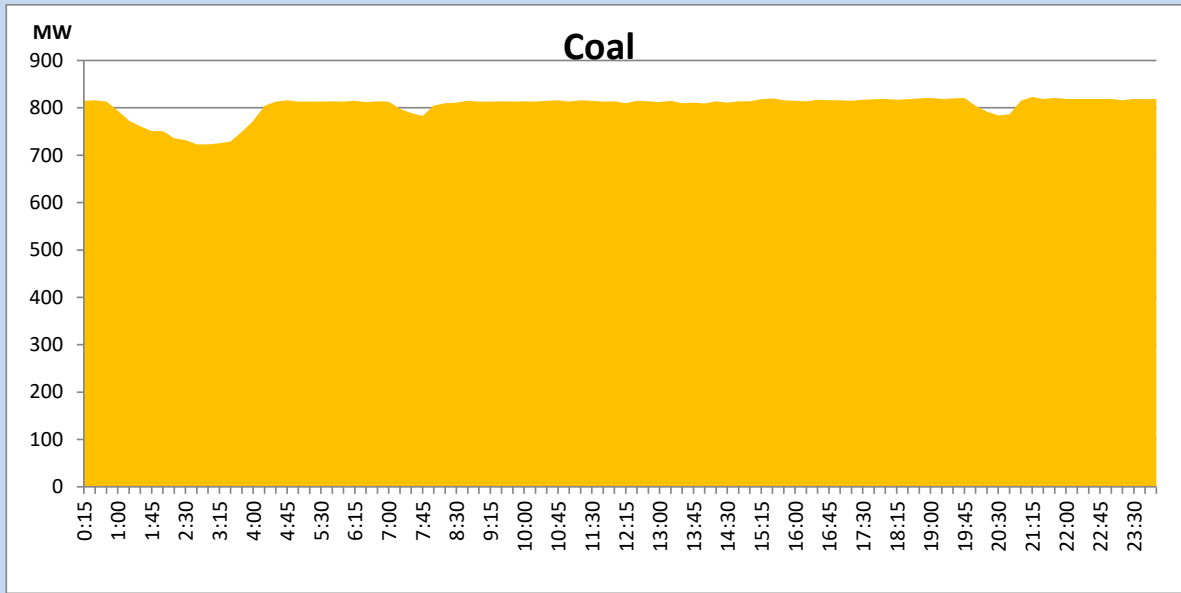
April 18, 2022

Solar and wind data is based on Telemetered Power Stations only



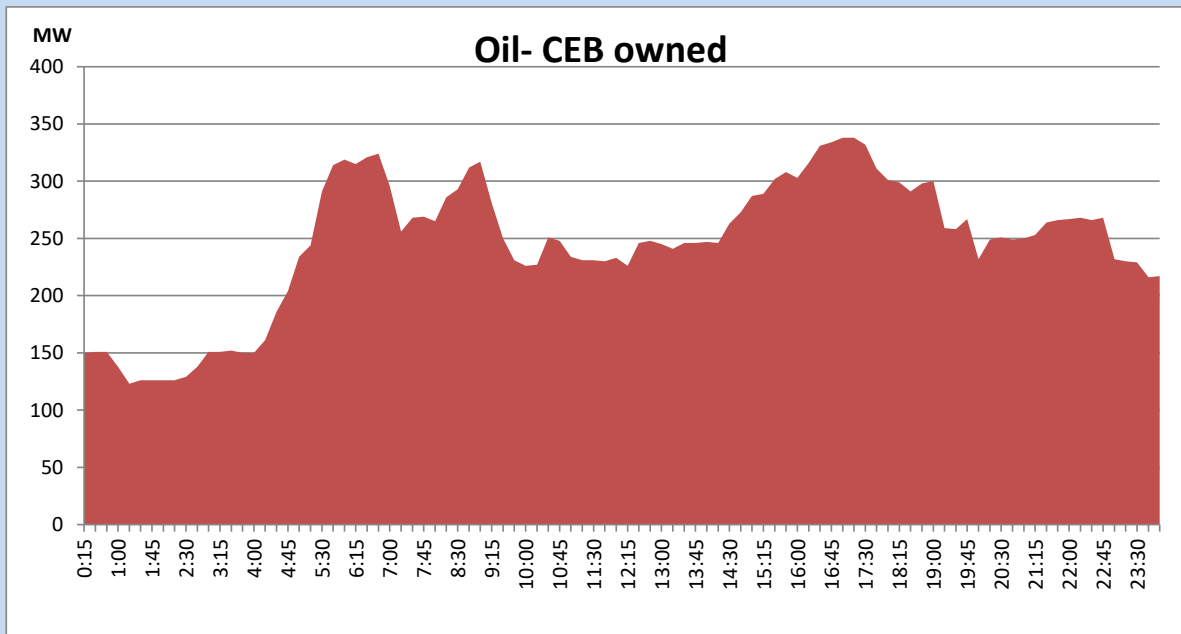
## Coal Generation during the Previous day

April 18, 2022



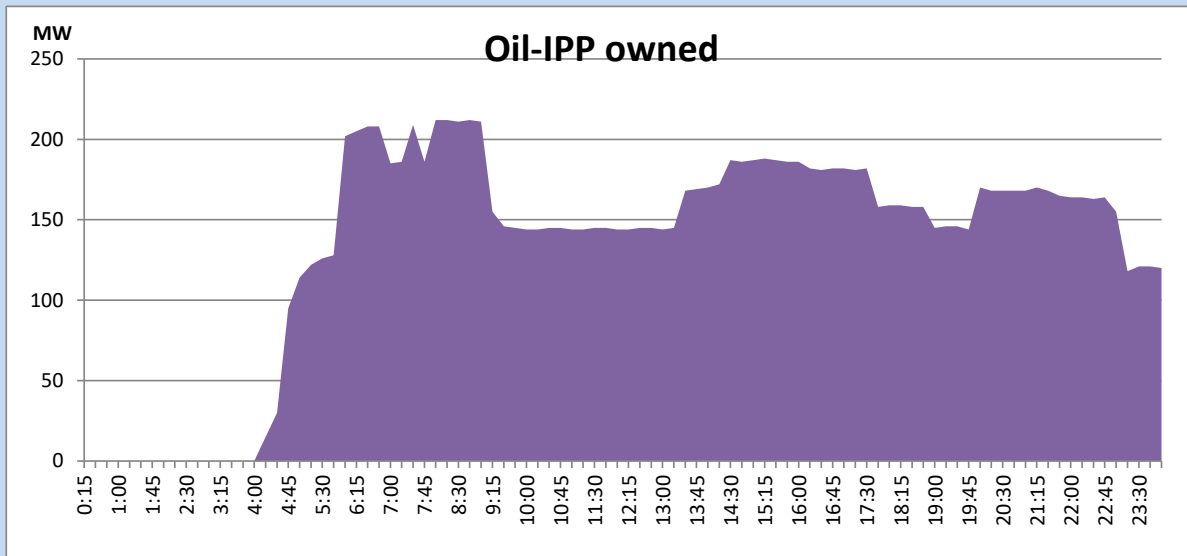
## CEB Oil Plant Generation during the Previous day

April 18, 2022



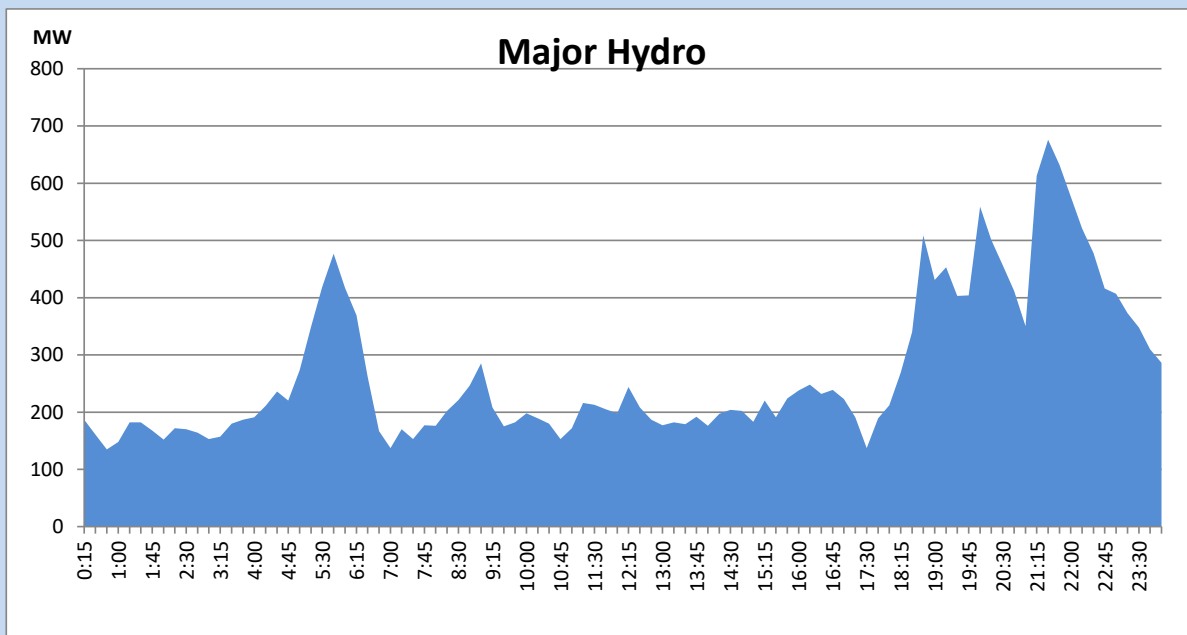
## IPP Oil Plant Generation during the Previous day

April 18, 2022



## Major Hydro Generation during the Previous day

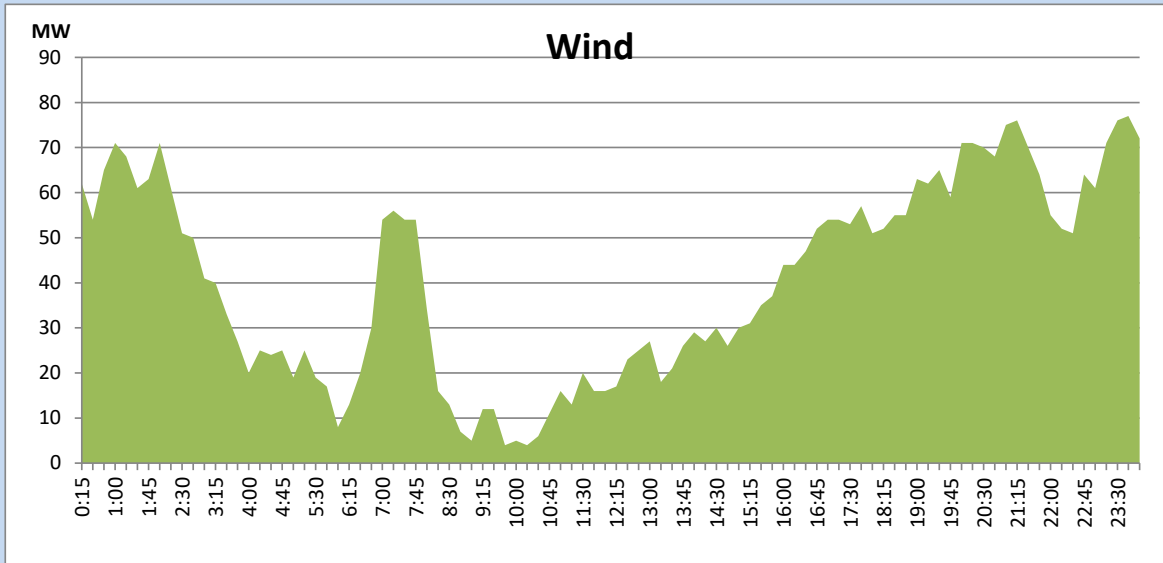
April 18, 2022



## Wind Generation during the Previous day

April 18, 2022

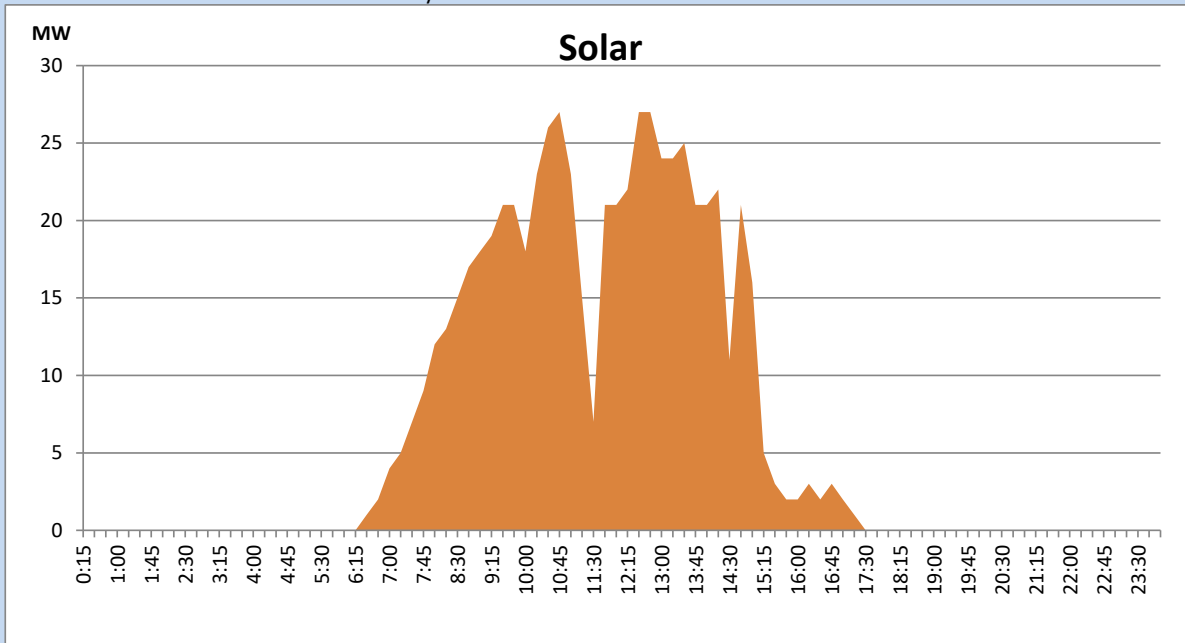
Based on Telemetered Power Stations only



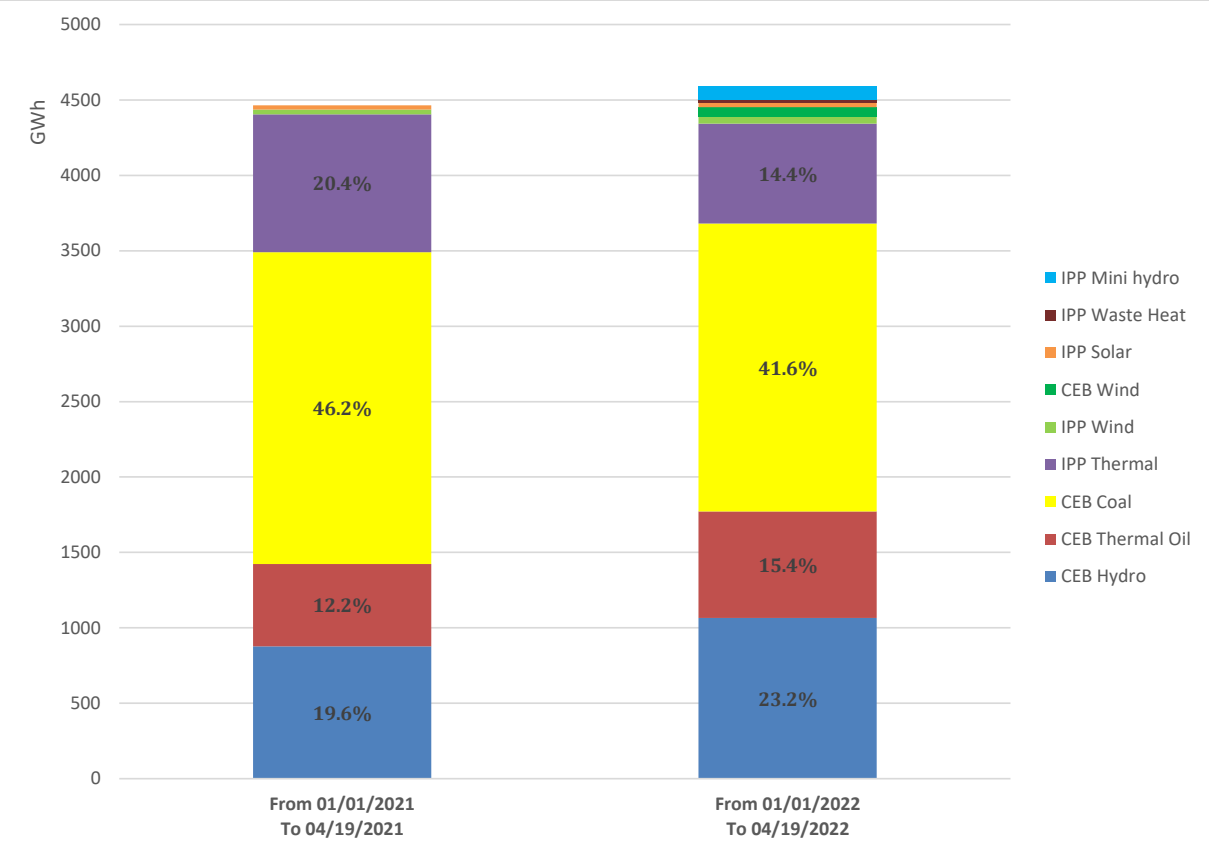
## Solar Generation during the Previous day

April 18, 2022

Based on Telemetered Power Stations only



# Cumulative Dispatch Comparison with Last Year



## Thermal Plant Fuel types

Power Station	Primary Fuel
CEB Thermal	
Sapugaskanda 1	Heavy Fuel
Sapugaskanda 2	Heavy Fuel
Kelanitissa Small Gas Turbines	Auto Diesel
GT 7 - Kelanitissa	Auto Diesel
Kelanitissa CCY	Naphtha & Diesel
Lakvijaya 1	Coal
Lakvijaya 2	Coal
Lakvijaya 3	Coal
Uthuru Janani	Heavy Fuel
Barge CEB	Heavy Fuel

Power Station	Primary Fuel
Private Thermal	
Sojitz - Kelanitissa	Auto Diesel
West Coast	Heavy Fuel

### Major Incidents during the day -as reported by CEB morning of

April 20, 2022

- 1) Rotational manual load shedding was carried out from 9:00 hrs to 21:00 hrs.
- 2) Kesbewa-Horana/Panadura cct tripped at 09:29 hrs from all three ends due to operation of differential protection. Same time Horana-Matugama cct tripped from Horana end and Tripped & A/R at Matugama end causing Horana GSS to be dead. Horana GSS restored at 09:41 hrs and Kesbewa-Horana/Panadura cct normalized at 09:56 hrs.
- 3) SPS-A made forced shutdown at 12:45 hrs due to lack of fuel.
- 4) Sojitz made forced shutdown at 01:00 hrs (on 20.04.2022) due to lack of fuel.