

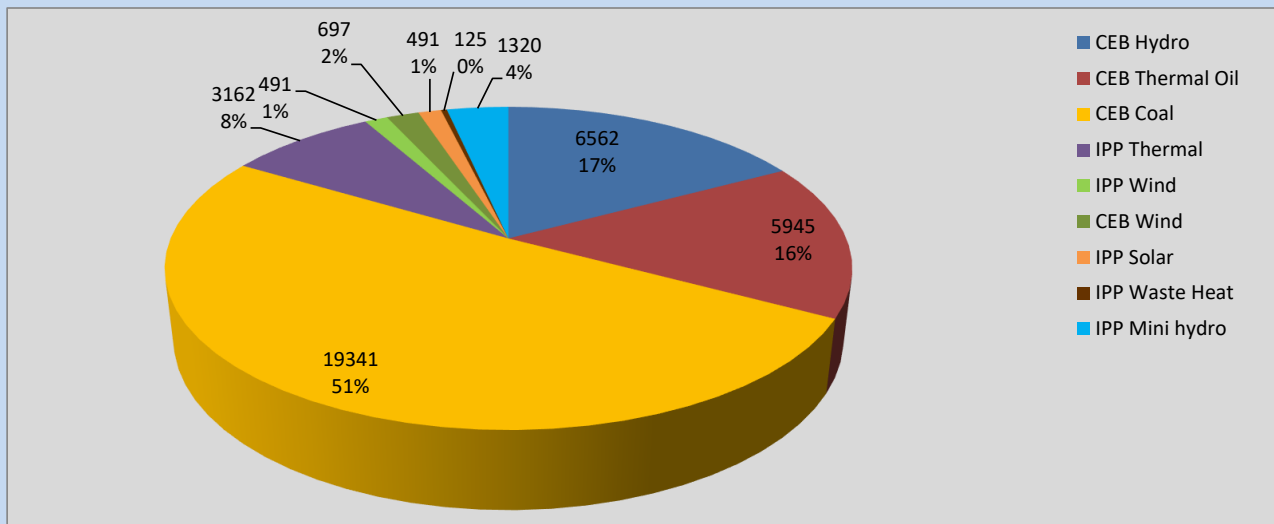
Generation and Reservoirs Statistics

April 18, 2022



PUBLIC UTILITIES COMMISSION OF SRI LANKA

Daily Generation Mix in MWh



Total Generation **37,915 MWh**

Note: Above data is excluding contribution from Roof Top Solar, 1MW Solar and certain Mini Hydro plants

Cumulative Dispatch

Note: Following data is Excluding contribution from Roof Top Solar, 1MW solar and Mini Hydro plants

For Current Month

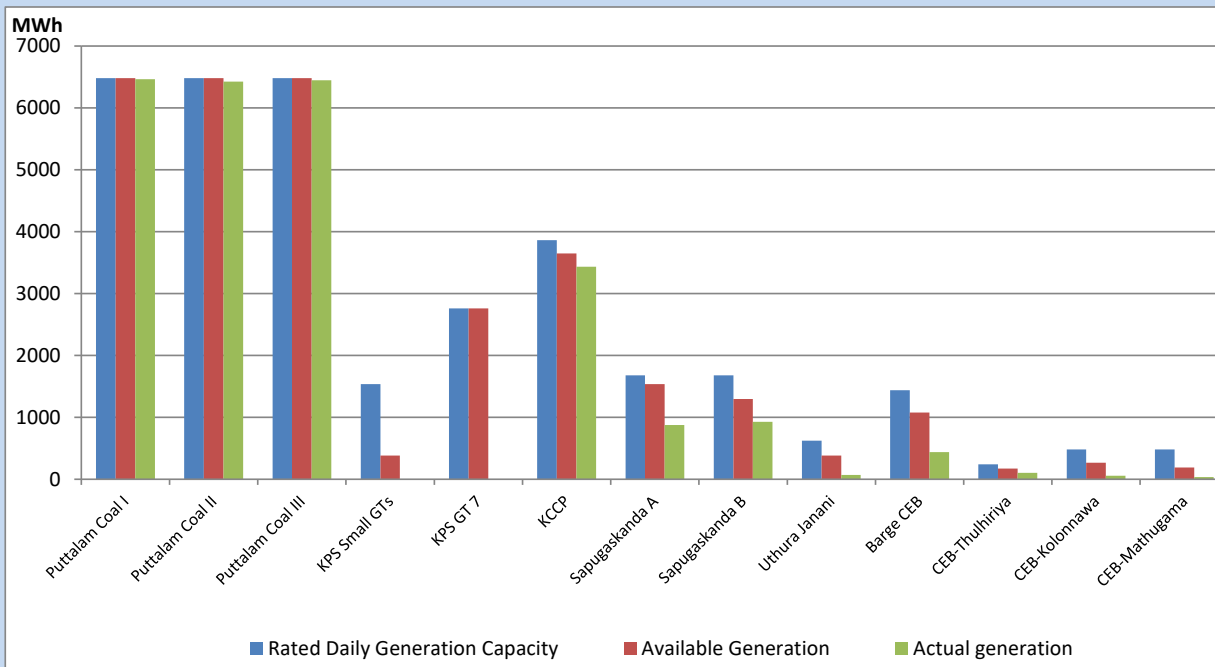
Category	Dispatch (GWh)	Percentage
CEB Hydro	129.43	20.46%
CEB Thermal Oil	60.64	9.59%
CEB Coal	338.51	53.51%
IPP Thermal	60.94	9.63%
SPP Wind	5.23	0.83%
CEB Wind	7.28	1.15%
SPP Solar	4.53	0.72%
SPP Solid Waste	3.54	0.56%
Mini Hydro	22.50	3.56%
Total	632.60	

For Current Year

Category	Dispatch (GWh)	Percentage
CEB Hydro	1,059.3	23.28%
CEB Thermal Oil	701.8	15.42%
CEB Coal	1,889.0	41.51%
IPP Thermal	653.9	14.37%
SPP Wind	47.6	1.05%
CEB Wind	61.0	1.34%
SPP Solar	28.2	0.62%
SPP Solid Waste	21.3	0.47%
Mini Hydro	88.9	1.95%
Total	4,550.7	

CEB owned Thermal Plant Dispatch

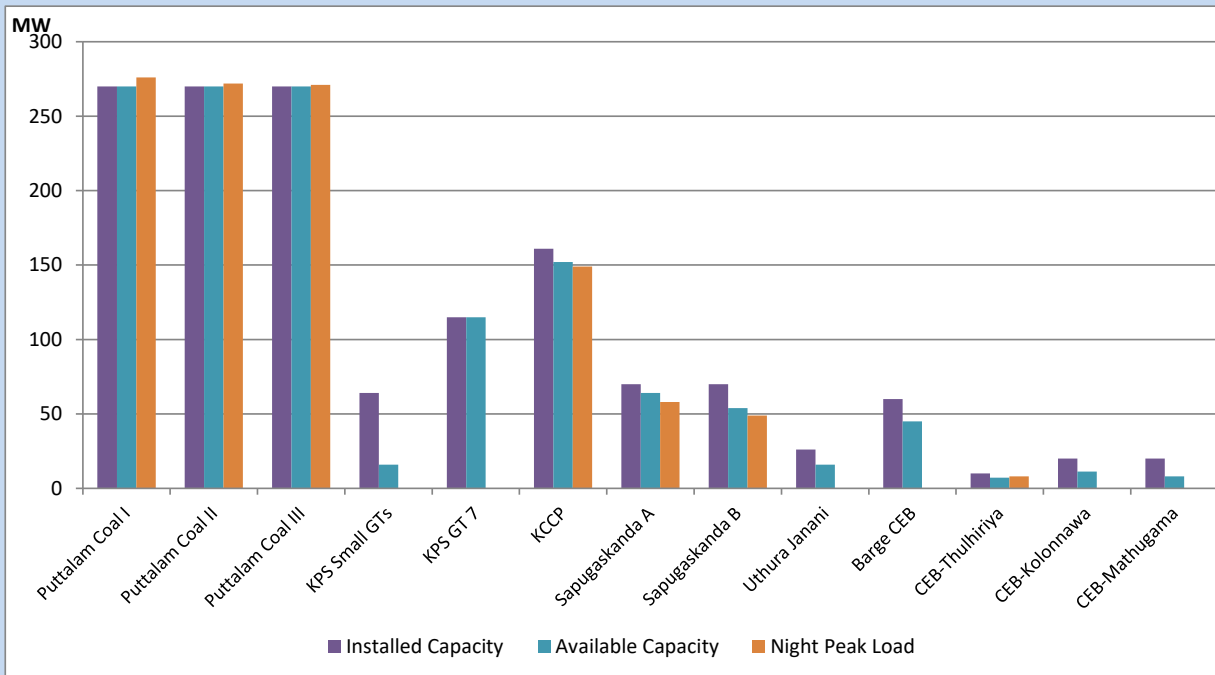
April 18, 2022



Available Generation is estimated based on plant availability at 6.00am on

April 19, 2022

CEB owned Thermal Plant Loading at the Night Peak



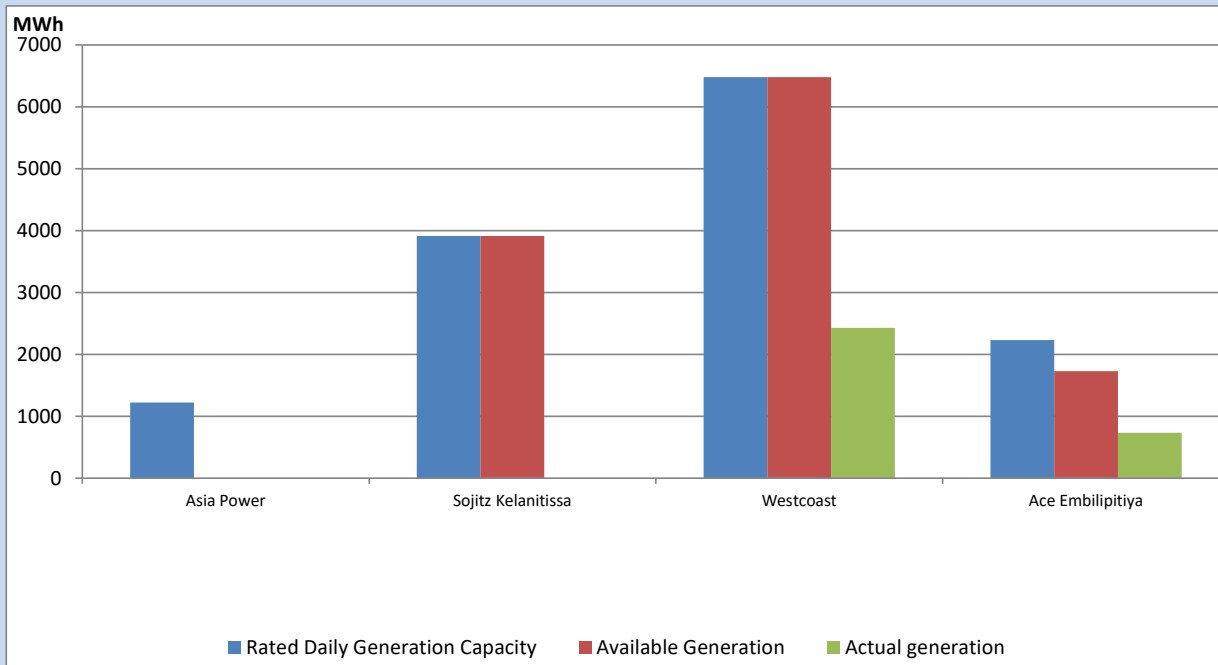
Note- Plant availability is recorded at 6.00 am on

April 19, 2022

IPP owned Thermal Plant Dispatch

April 18, 2022

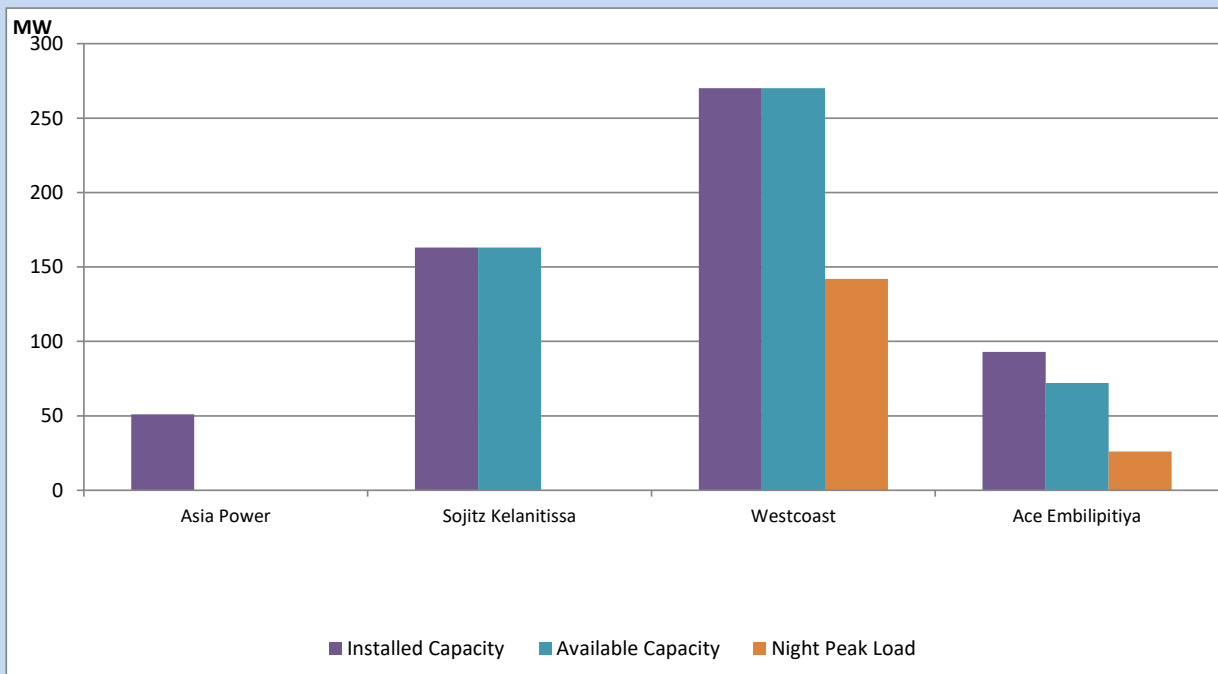
ACE Matara, V Power Pallekale, Vpower Galle, V Power Horana, Vpower Hambantota, Vpower Valachchena and Altaqa Mahiyanganaya are not available due to expiration of PPAs



Available Generation is estimated based on plant availability at 6.00am on

April 19, 2022

IPP owned Thermal Plant Loading at the Night Peak

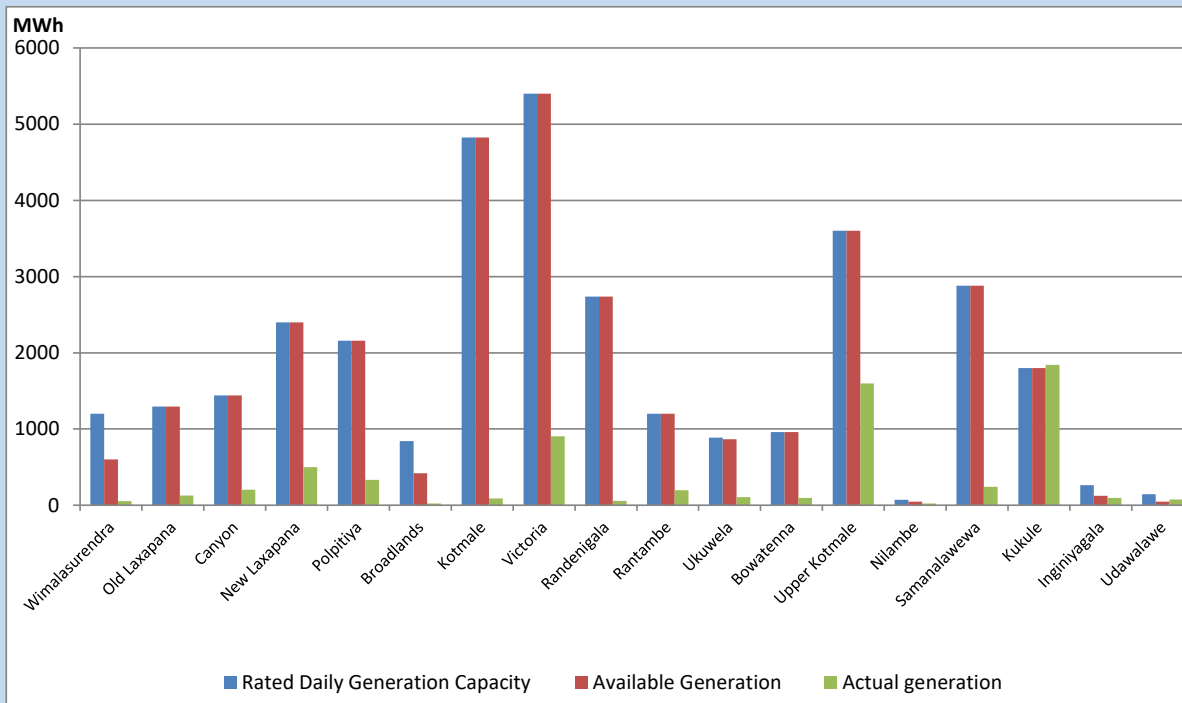


Note- Plant availability is recorded at 6.00 am on

April 19, 2022

Major Hydro Plant Dispatch

April 18, 2022

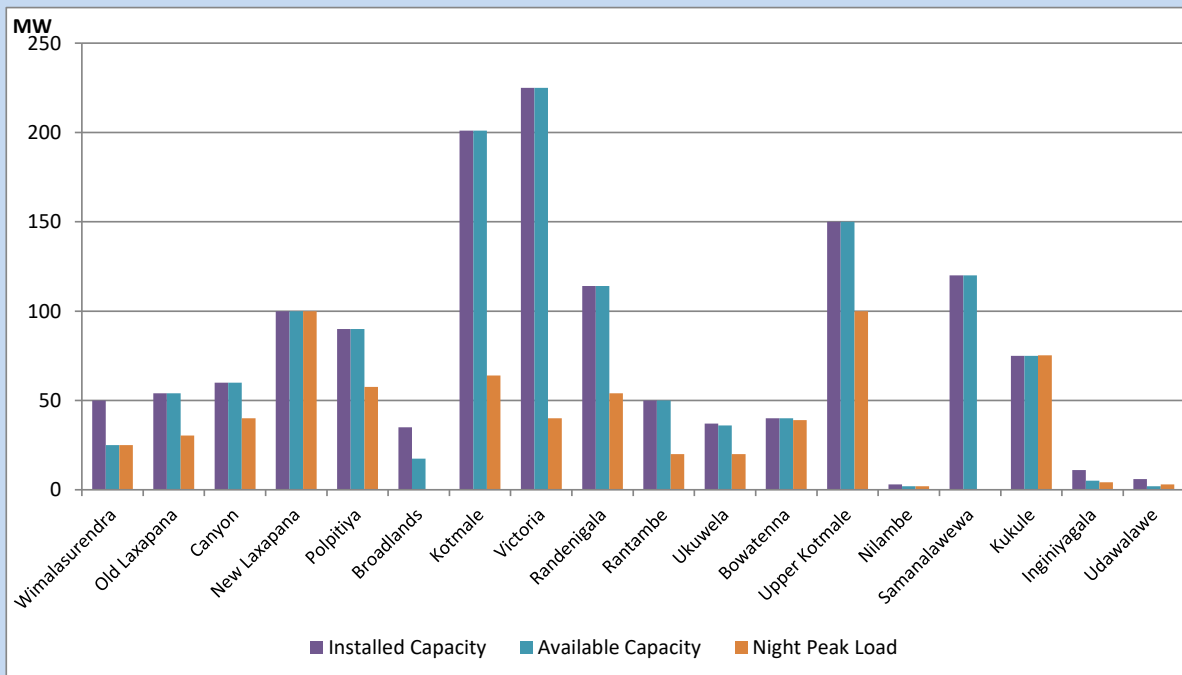


Available Generation is estimated based on plant availability at 6.00am on April 19, 2022
 Broadlands power plant is operating in the Commissioning Stage

April 19, 2022

Major Hydro Plant Loading at Night Peak

April 18, 2022



Note- Plant availability is recorded at 6.00 am on April 19, 2022
 Broadlands power plant is operating in the Commissioning Stage

Summary of Major Plant performance

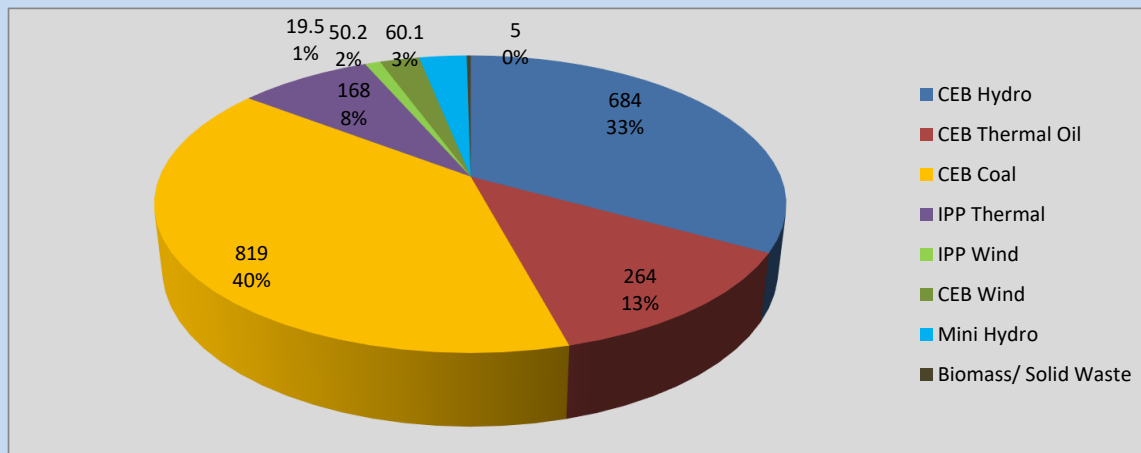
Plant	Installed Capacity	Plant Availability	Night peak Load	Plant Dispatch
	(MW)	(MW)	(MW)	(MWh)
Wimalasurendra	50	25	25	53
Old Laxapana	54	54	30	128
Canyon	60	60	40	204
New Laxapana	100	100	100	499
Polpitiya	90	90	58	334
Broadlands	35	18	0	22
Kotmale	201	201	64	90
Victoria	225	225	40	904
Randenigala	114	114	54	56
Rantambe	50	50	20	198
Ukuwela	37	36	20	107
Bowatenna	40	40	39	94
Upper Kotmale	150	150	100	1,596
Nilambe	3	2	2	24
Samanalawewa	120	120	0	243
Kukule	75	75	75	1,841
Inginiyagala	11	5	4	94
Udawalawe	6	2	3	75
Puttalam Coal I	270	270	276	6,466
Puttalam Coal II	270	270	272	6,427
Puttalam Coal III	270	270	271	6,448
KPS Small GTs	64	16	0	0
KPS GT 7	115	115	0	0
KCCP	161	152	149	3,435
Sapugaskanda A	70	64	58	875
Sapugaskanda B	70	54	49	929
Uthura Janani	26	16	0	69
Barge CEB	60	45	0	440
CEB-Thulhiriya	10	7	8	105
CEB-Kolonnawa	20	11	0	55
CEB-Mathugama	20	8	0	37
Asia Power	51	0	0	0
Sojitz Kelanitissa	163	163	0	0
West Coast	270	270	142	2,430
ACE Embilipitiya	93	72	26	732
Total	3,424	3,170	2,060	37,915

Plant availability is the availability recorded at 6 am on

April 19, 2022

Contribution to the Night Peak in MW

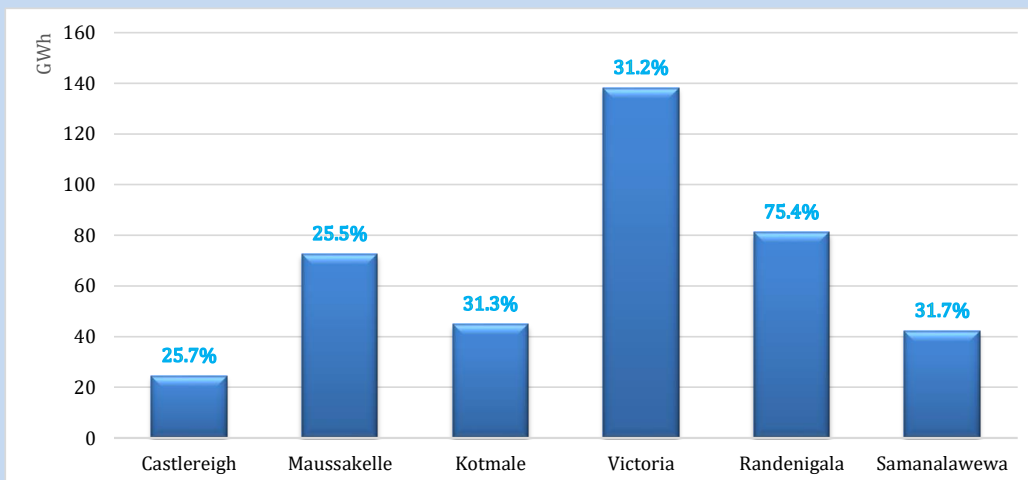
April 18, 2022



Night Peak*	2,070.1 MW
Day Peak	1,648.2 MW
Minimum Demand	1,145.0 MW

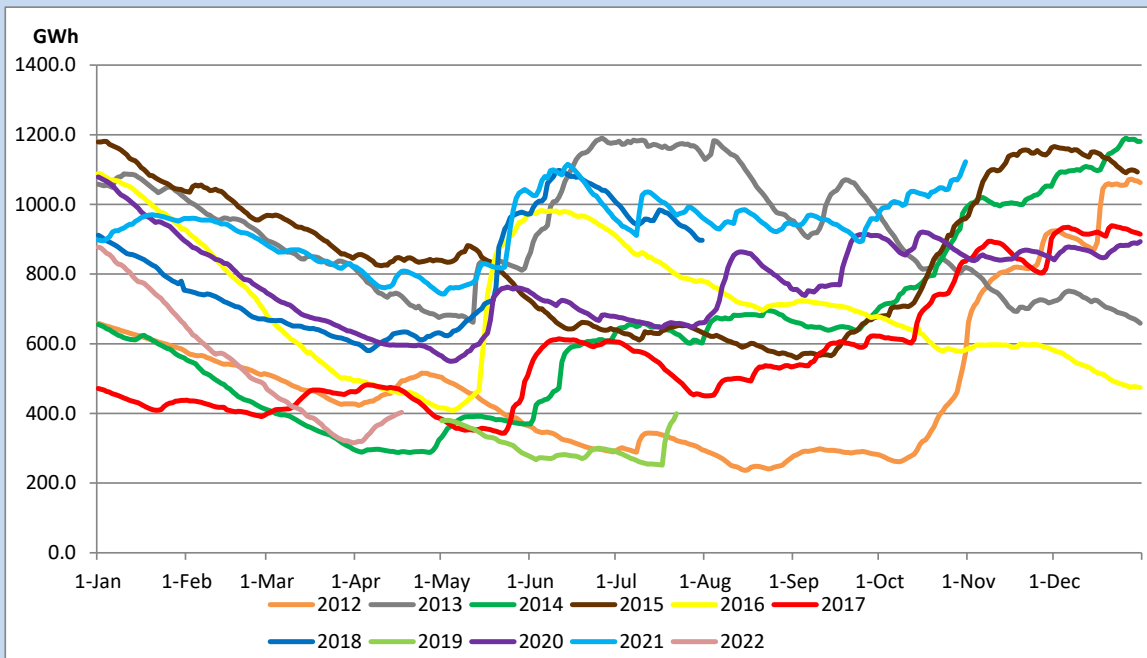
Above figures are excluding contribution from Roof Top Solar, 1MW solar, certain Wind plants and Mini Hydro plants

Reservoir Levels - as at 06.00 Hr on April 19, 2022



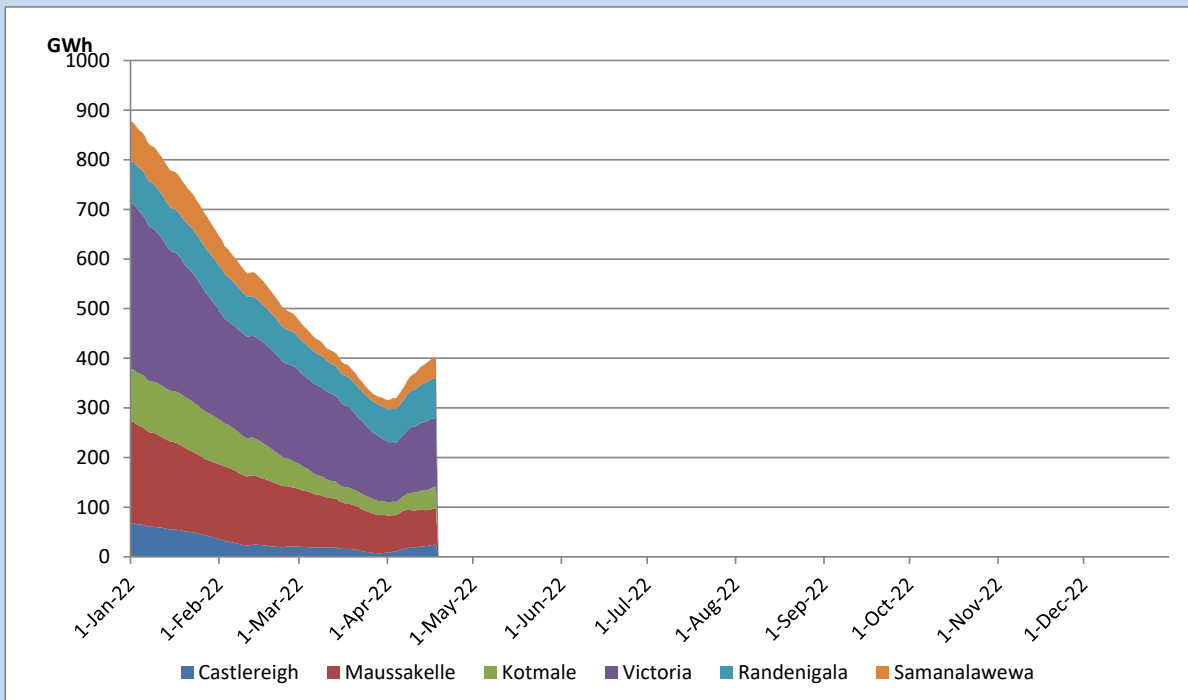
Total Reservoir Level	403.1 GWh
% of Total capacity	36.8%

Comparison of Total Reservoir Storage Levels with Past Years

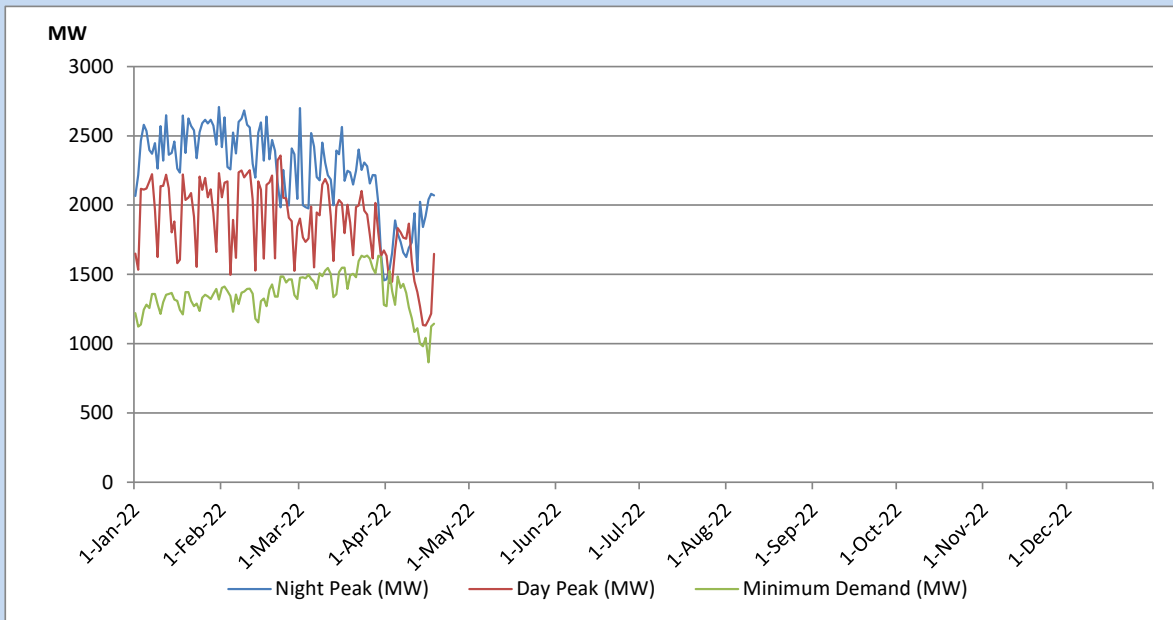


Data for 2018 and 2019 are only available for part of year.

Variation of Major Hydro Reservoir Levels in the current year (GWh)



Variation of Demand during the current year

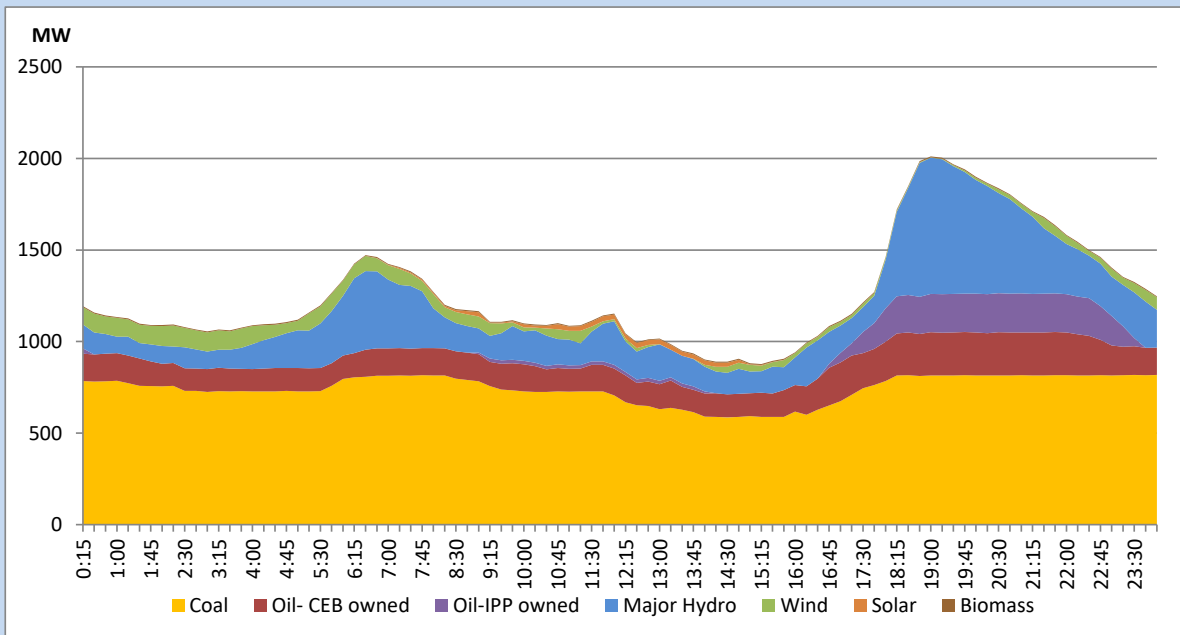


The above figures are excluding contribution from Roof Top Solar, 1MW solar, certain Wind plants and Mini Hydro plants

Daily Load Curve of the Previous day

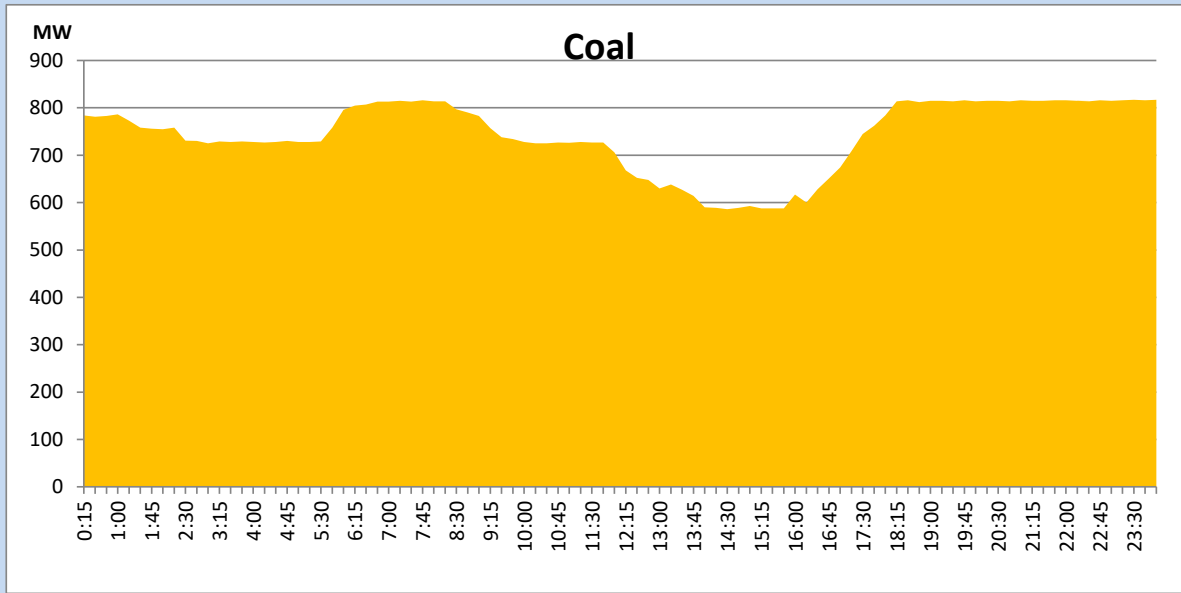
April 17, 2022

Solar and wind data is based on Telemetered Power Stations only



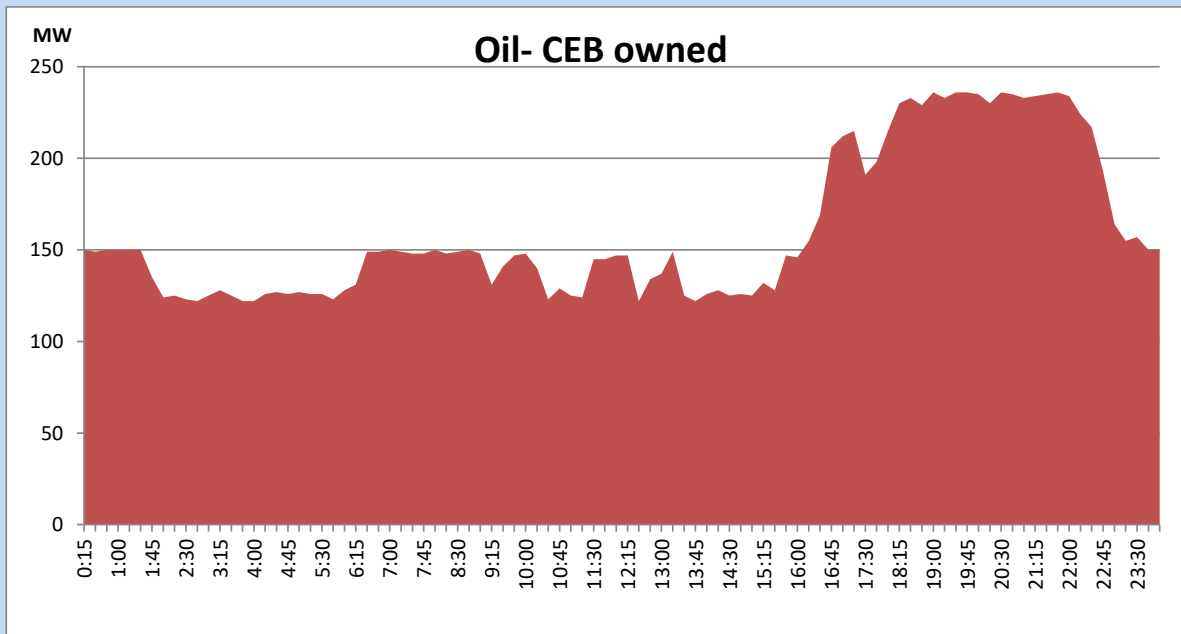
Coal Generation during the Previous day

April 17, 2022



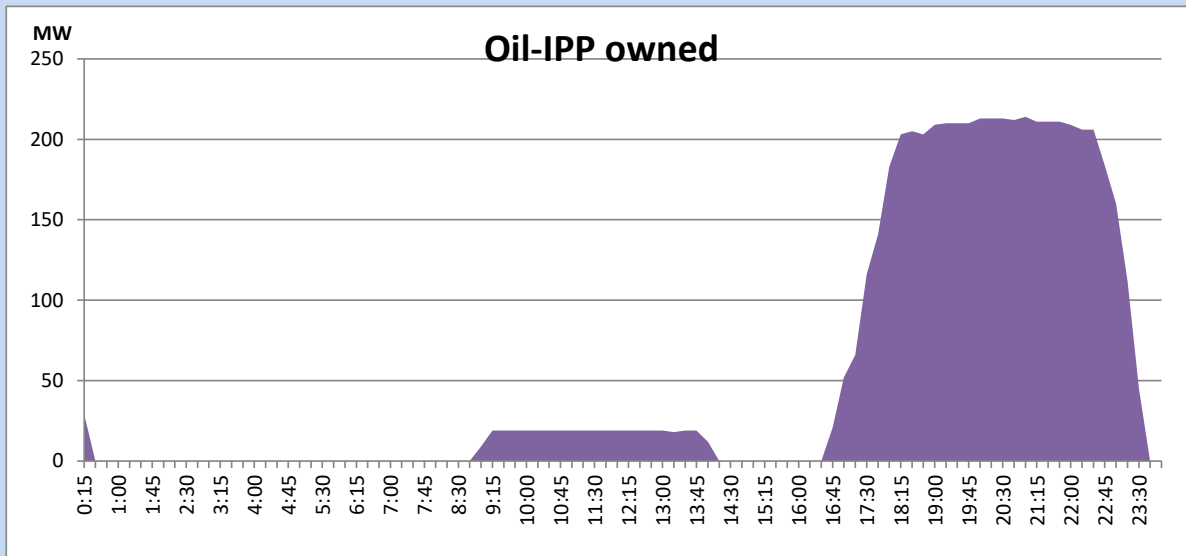
CEB Oil Plant Generation during the Previous day

April 17, 2022



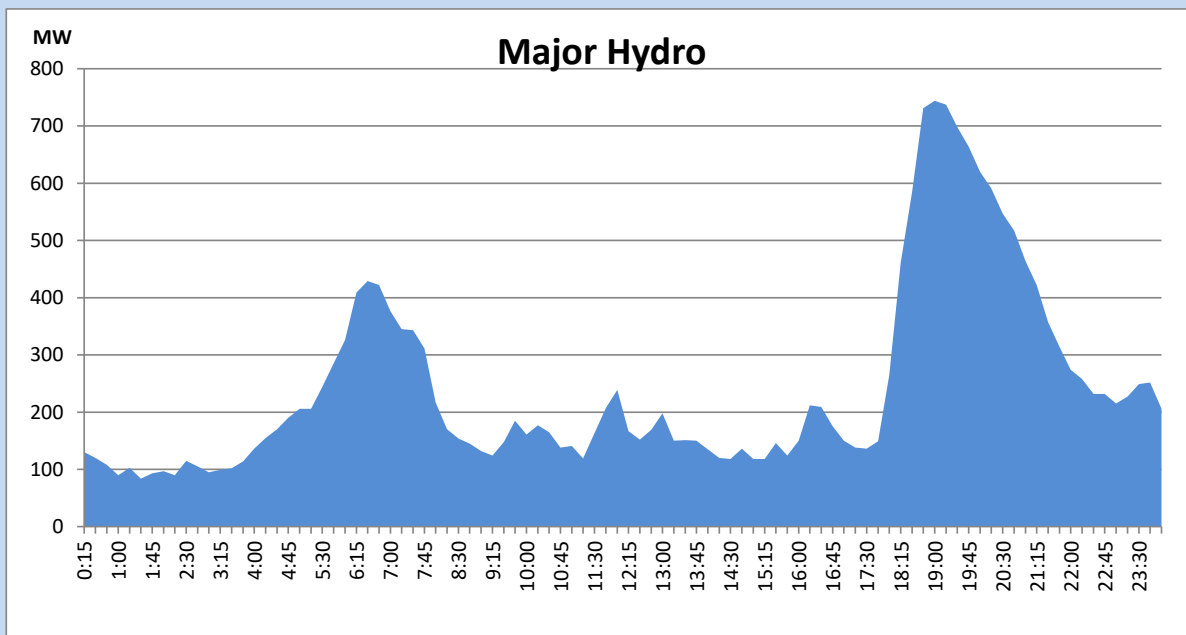
IPP Oil Plant Generation during the Previous day

April 17, 2022



Major Hydro Generation during the Previous day

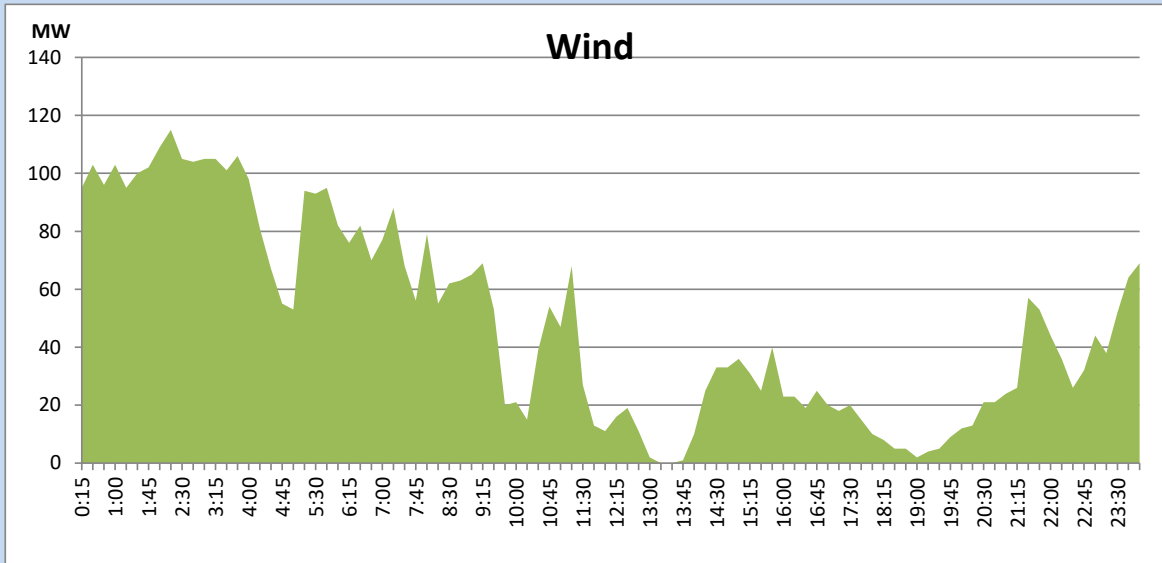
April 17, 2022



Wind Generation during the Previous day

April 17, 2022

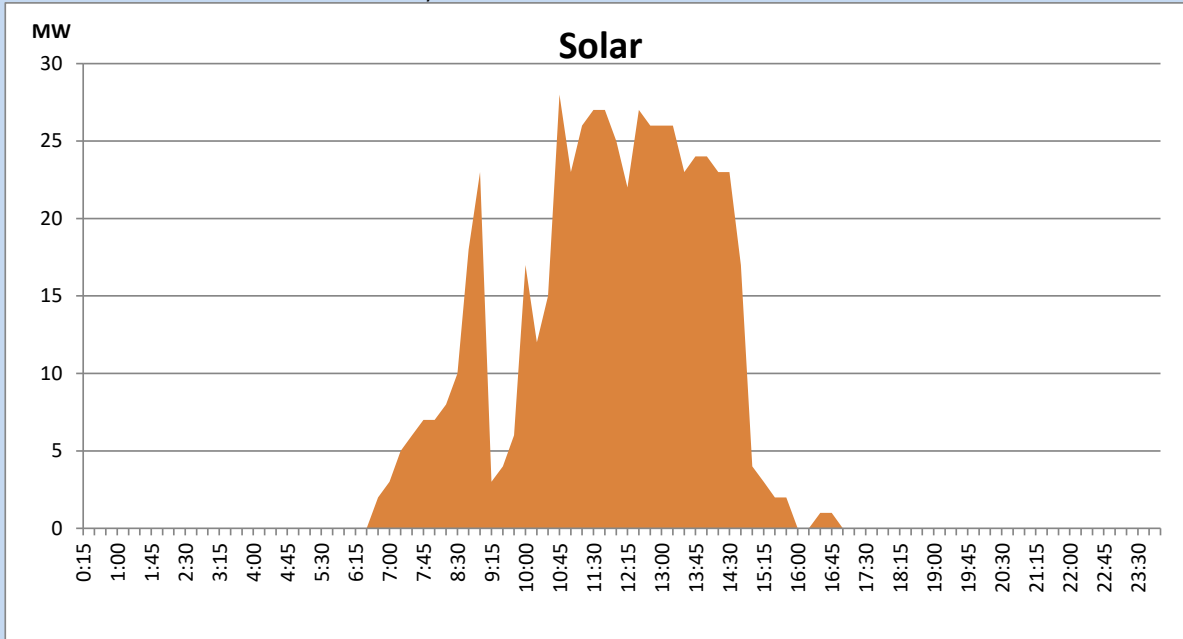
Based on Telemetered Power Stations only



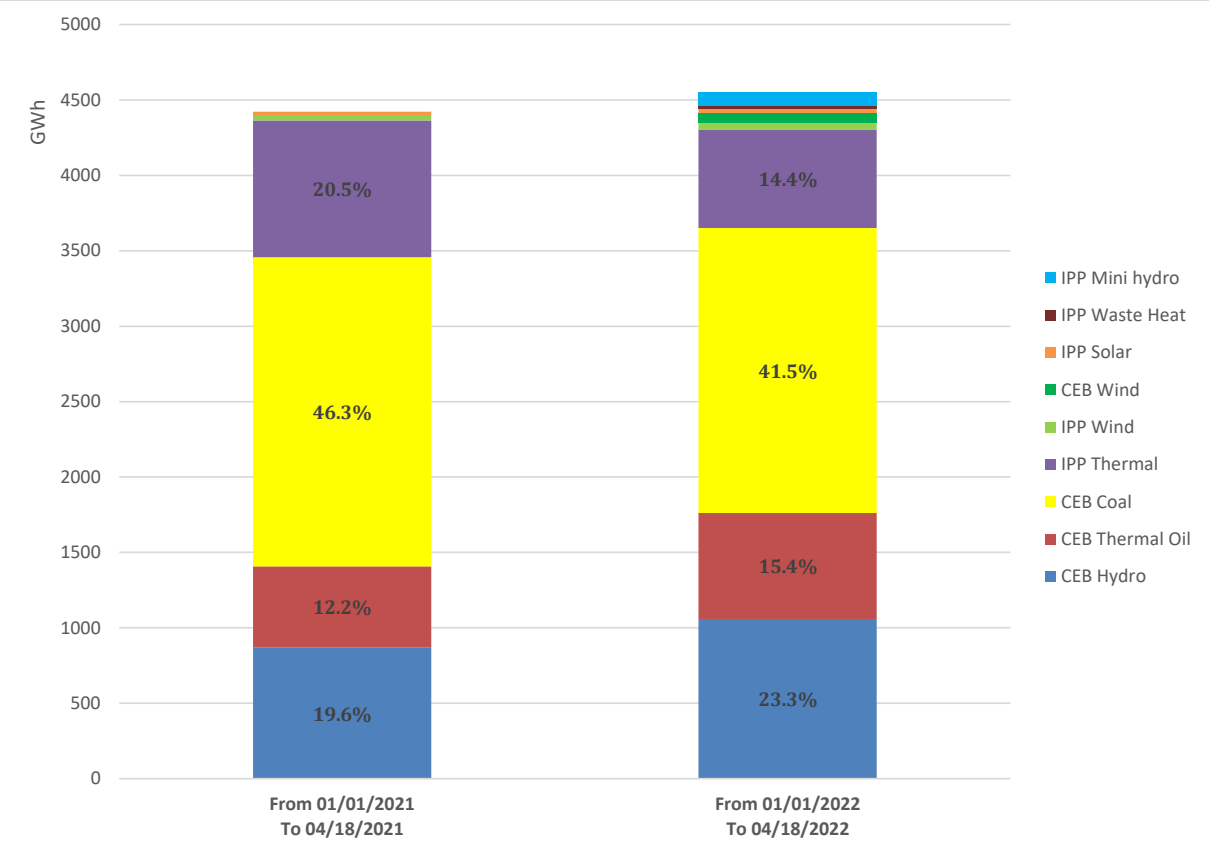
Solar Generation during the Previous day

April 17, 2022

Based on Telemetered Power Stations only



Cumulative Dispatch Comparison with Last Year



Thermal Plant Fuel types

Power Station	Primary Fuel
CEB Thermal	
Sapugaskanda 1	Heavy Fuel
Sapugaskanda 2	Heavy Fuel
Kelanitissa Small Gas Turbines	Auto Diesel
GT 7 - Kelanitissa	Auto Diesel
Kelanitissa CCY	Naphtha & Diesel
Lakvijaya 1	Coal
Lakvijaya 2	Coal
Lakvijaya 3	Coal
Uthuru Janani	Heavy Fuel
Barge CEB	Heavy Fuel

Power Station	Primary Fuel
Private Thermal	
Sojitz - Kelanitissa	Auto Diesel
West Coast	Heavy Fuel

Major Incidents during the day -as reported by CEB morning of

April 19, 2022

- 1) Rotational manual load shedding was carried out from 9:00 hrs to 21:00 hrs.
- 2) Ukuwela-Habarana cct tripped from Ukuwela end and tripped and auto-reclosed from Habarana end at 12:06 hrs. The cct was normalized at 12:15 hrs.