

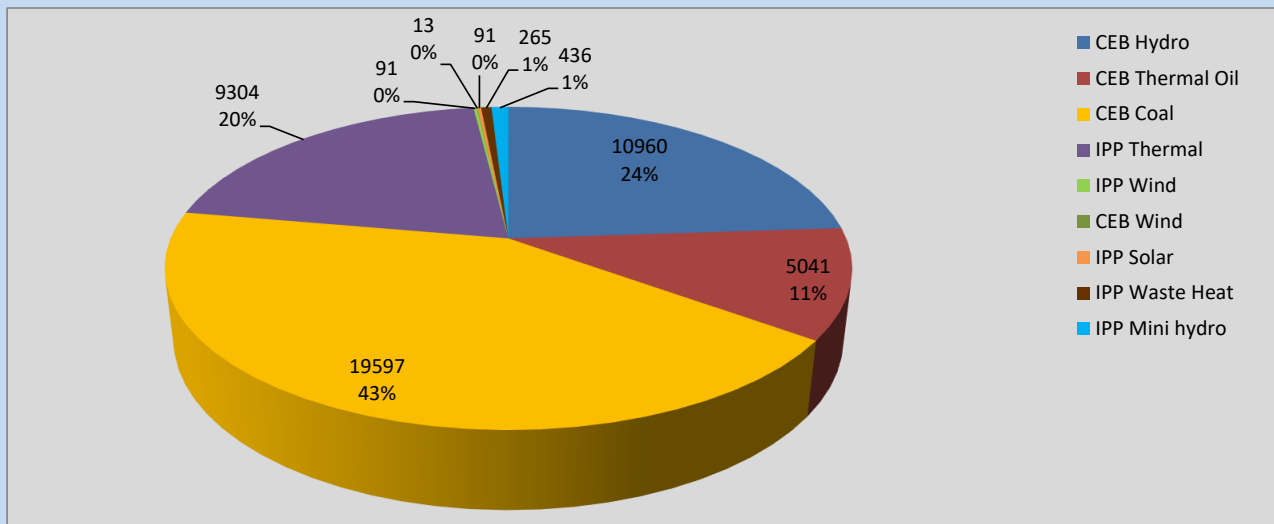
Generation and Reservoirs Statistics

March 16, 2022



PUBLIC UTILITIES COMMISSION OF SRI LANKA

Daily Generation Mix in MWh



Total Generation **45,876 MWh**

Note: Above data is excluding contribution from Roof Top Solar, 1MW Solar and certain Mini Hydro plants

Cumulative Dispatch

Note: Following data is Excluding contribution from Roof Top Solar, 1MW solar and Mini Hydro plants

For Current Month

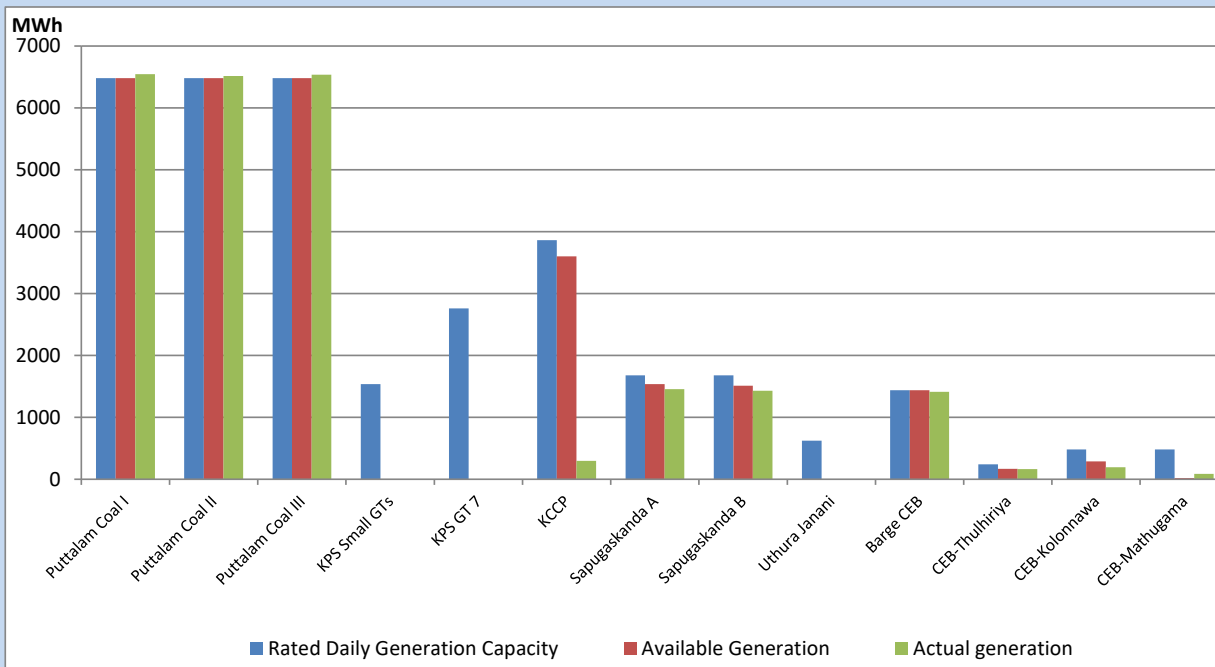
Category	Dispatch (GWh)	Percentage
CEB Hydro	133.25	18.94%
CEB Thermal Oil	109.95	15.63%
CEB Coal	313.54	44.56%
IPP Thermal	112.18	15.94%
SPP Wind	7.50	1.07%
CEB Wind	10.75	1.53%
SPP Solar	4.00	0.57%
SPP Solid Waste	3.62	0.51%
Mini Hydro	8.78	1.25%
Total	703.57	

For Current Year

Category	Dispatch (GWh)	Percentage
CEB Hydro	811.1	24.83%
CEB Thermal Oil	522.2	15.98%
CEB Coal	1,257.1	38.48%
IPP Thermal	503.6	15.42%
SPP Wind	35.6	1.09%
CEB Wind	45.0	1.38%
SPP Solar	19.3	0.59%
SPP Solid Waste	14.7	0.45%
Mini Hydro	58.5	1.79%
Total	3,266.8	

CEB owned Thermal Plant Dispatch

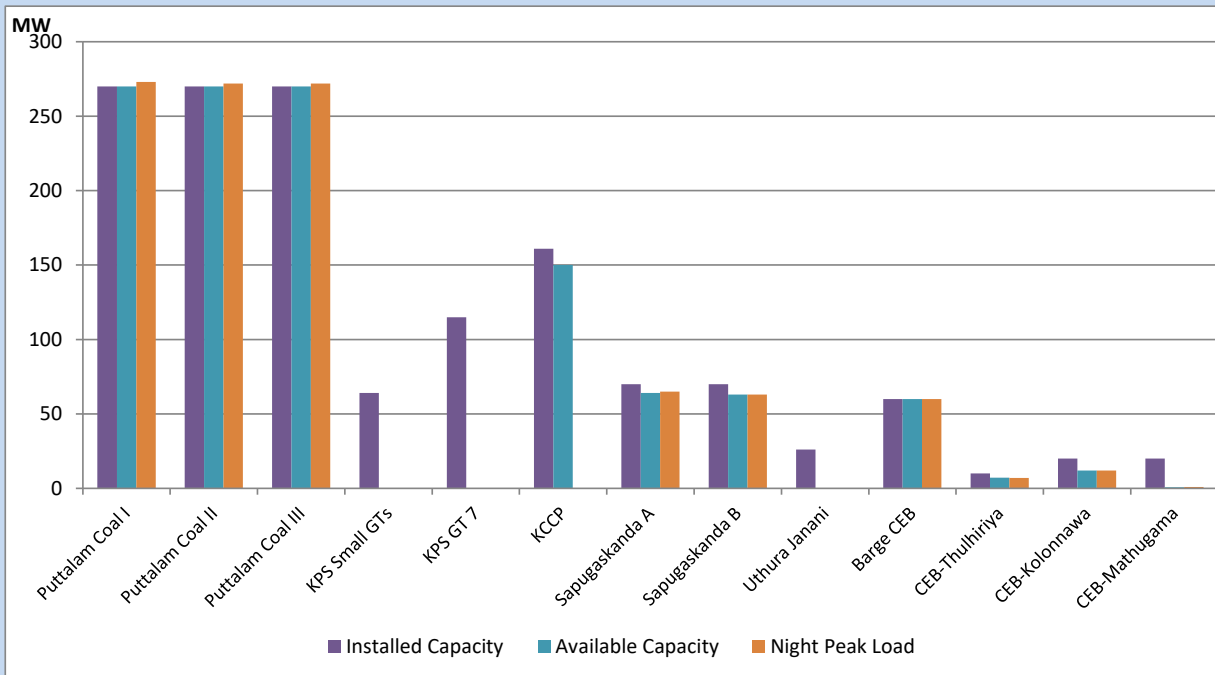
March 16, 2022



Available Generation is estimated based on plant availability at 6.00am on

March 17, 2022

CEB owned Thermal Plant Loading at the Night Peak



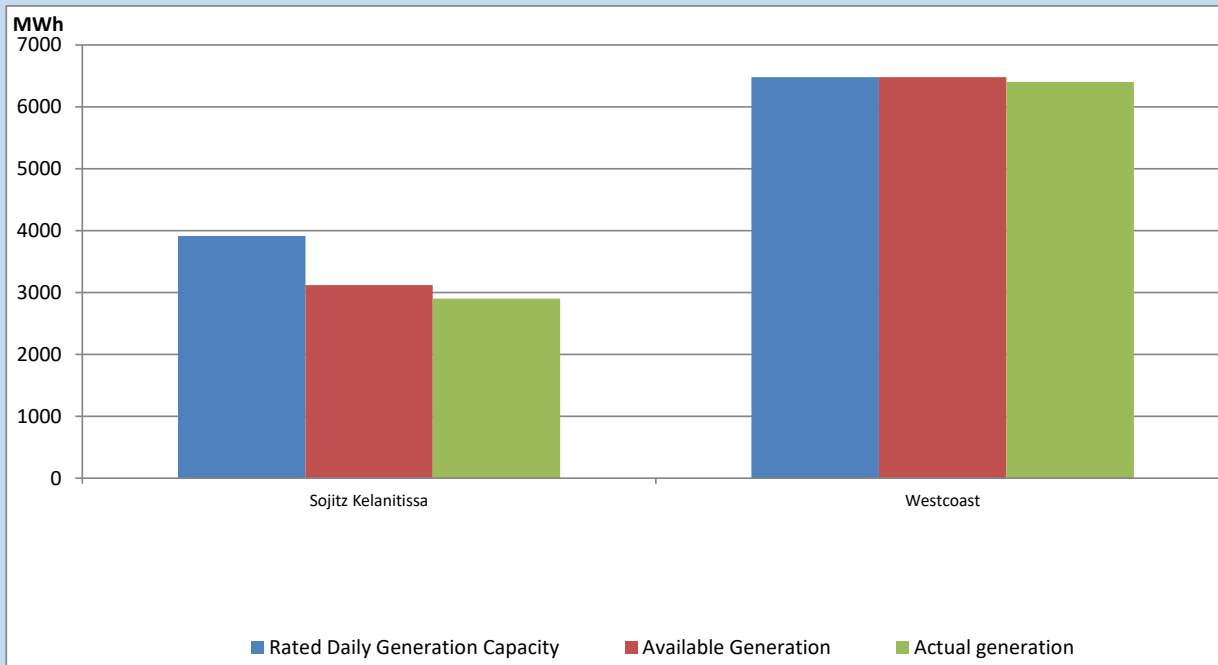
Note- Plant availability is recorded at 6.00 am on

March 17, 2022

IPP owned Thermal Plant Dispatch

March 16, 2022

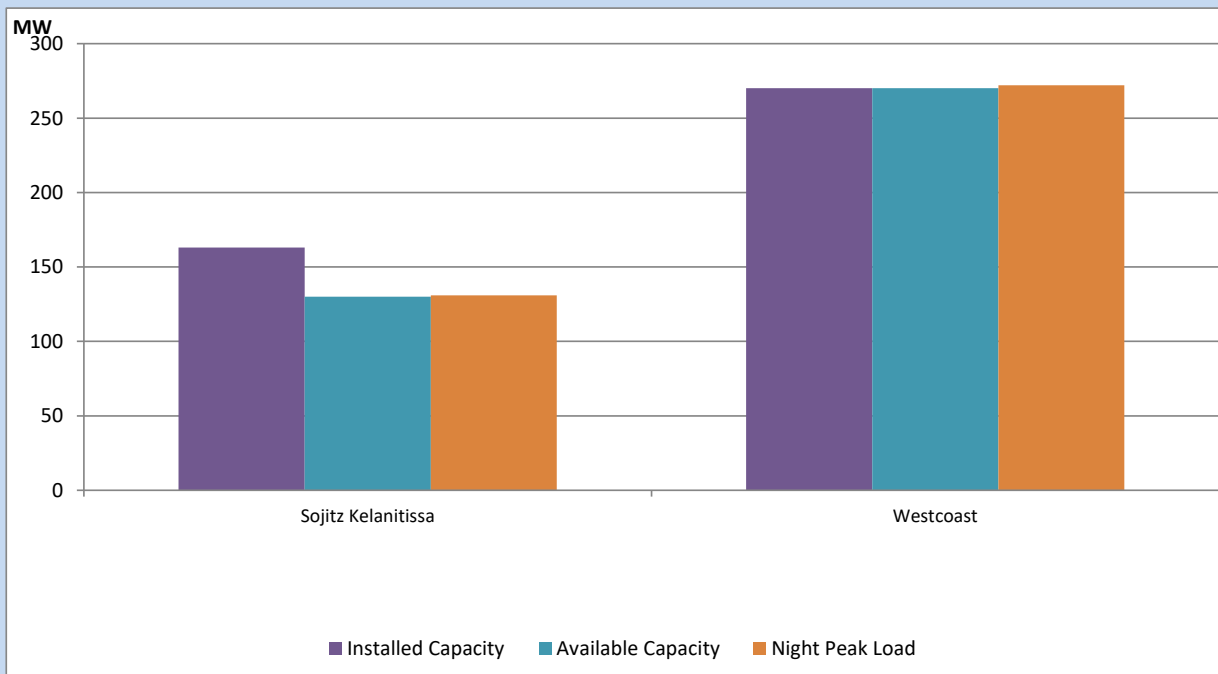
ACE Embilipitiya, ACE Matara, Asia Power, V Power Pallekale, Vpower Galle, V Power Horana, Vpower Hambantota, Vpower Valachchena and Altaqa Mahiyanganaya are not available due to expiration of PPAs



Available Generation is estimated based on plant availability at 6.00am on

March 17, 2022

IPP owned Thermal Plant Loading at the Night Peak

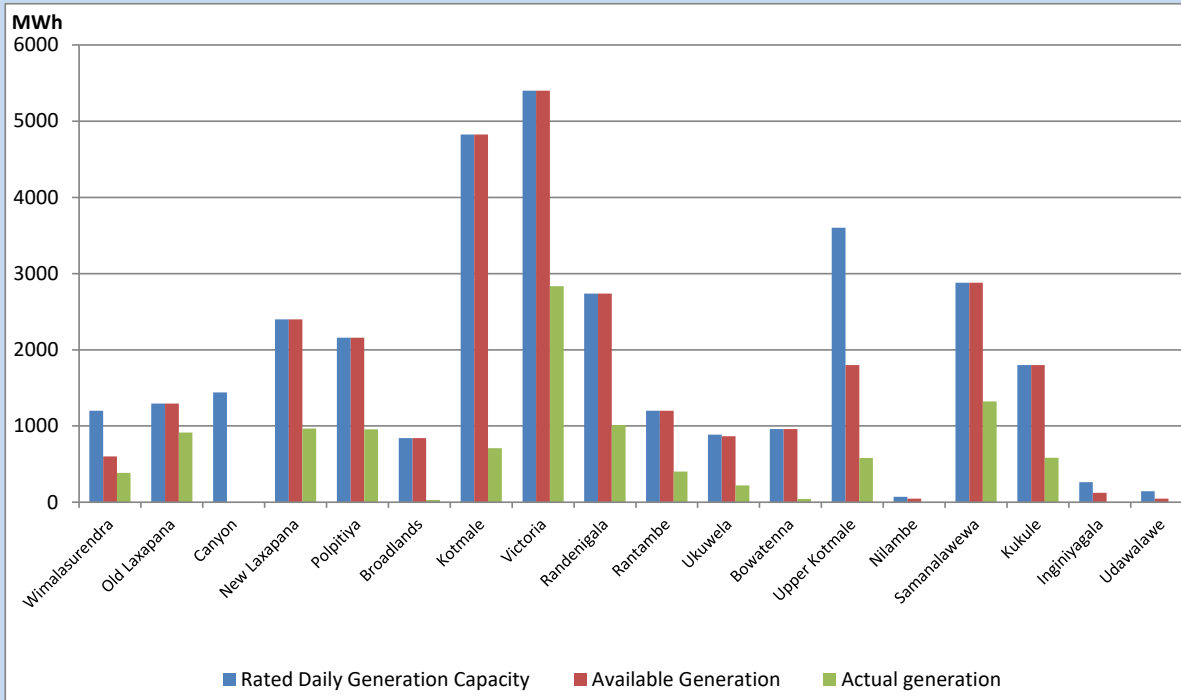


Note- Plant availability is recorded at 6.00 am on

March 17, 2022

Major Hydro Plant Dispatch

March 16, 2022

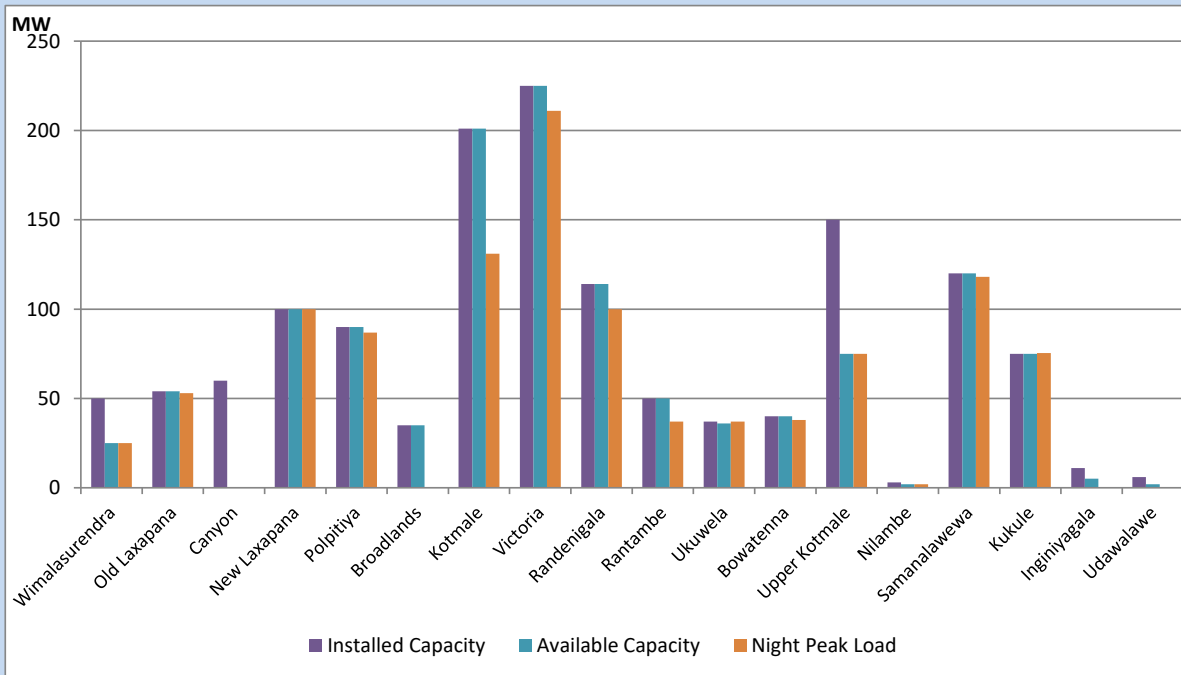


Available Generation is estimated based on plant availability at 6.00am on
Broadlands power plant is operating in the Commissioning Stage

March 17, 2022

Major Hydro Plant Loading at Night Peak

March 16, 2022



Note- Plant availability is recorded at 6.00 am on
Broadlands power plant is operating in the Commissioning Stage

March 17, 2022

Summary of Major Plant performance

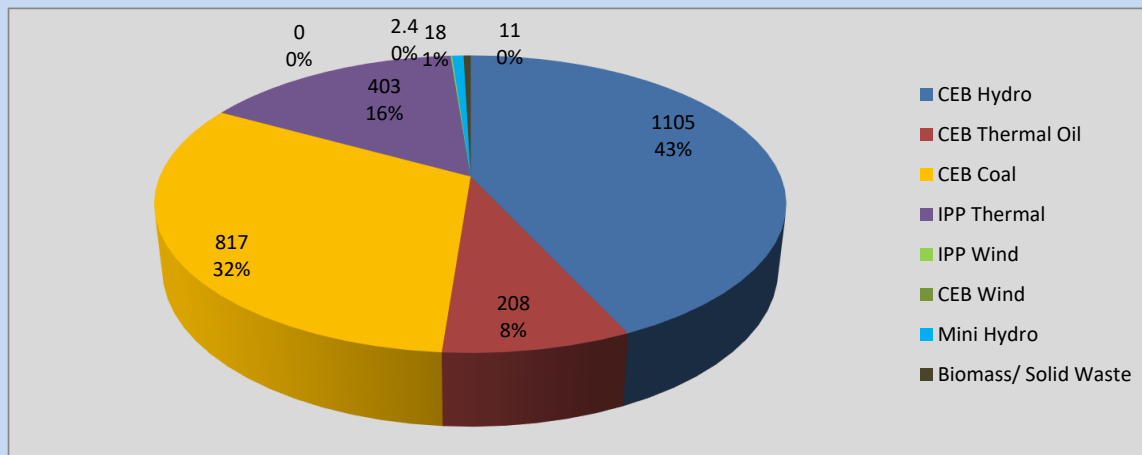
Plant	Installed Capacity	Plant Availability	Night peak Load	Plant Dispatch
	(MW)	(MW)	(MW)	(MWh)
Wimalasurendra	50	25	25	383
Old Laxapana	54	54	53	916
Canyon	60	0	0	0
New Laxapana	100	100	100	966
Polpitiya	90	90	87	956
Broadlands	35	35	0	29
Kotmale	201	201	131	710
Victoria	225	225	211	2,836
Randenigala	114	114	100	1,012
Rantambe	50	50	37	402
Ukuwela	37	36	37	221
Bowatenna	40	40	38	43
Upper Kotmale	150	75	75	581
Nilambe	3	2	2	0
Samanalawewa	120	120	118	1,322
Kukule	75	75	75	583
Inginiyagala	11	5	0	0
Udawalawe	6	2	0	0
Puttalam Coal I	270	270	273	6,547
Puttalam Coal II	270	270	272	6,514
Puttalam Coal III	270	270	272	6,536
KPS Small GTs	64	0	0	0
KPS GT 7	115	0	0	0
KCCP	161	150	0	297
Sapugaskanda A	70	64	65	1,455
Sapugaskanda B	70	63	63	1,432
Uthura Janani	26	0	0	0
Barge CEB	60	60	60	1,412
CEB-Thulhiriya	10	7	7	164
CEB-Kolonnawa	20	12	12	196
CEB-Mathugama	20	1	1	85
Sojitz Kelanitissa	163	130	131	2,902
West Coast	270	270	272	6,402
Total	3,280	2,816	2,549	45,876

Plant availability is the availability recorded at 6 am on

March 17, 2022

Contribution to the Night Peak in MW

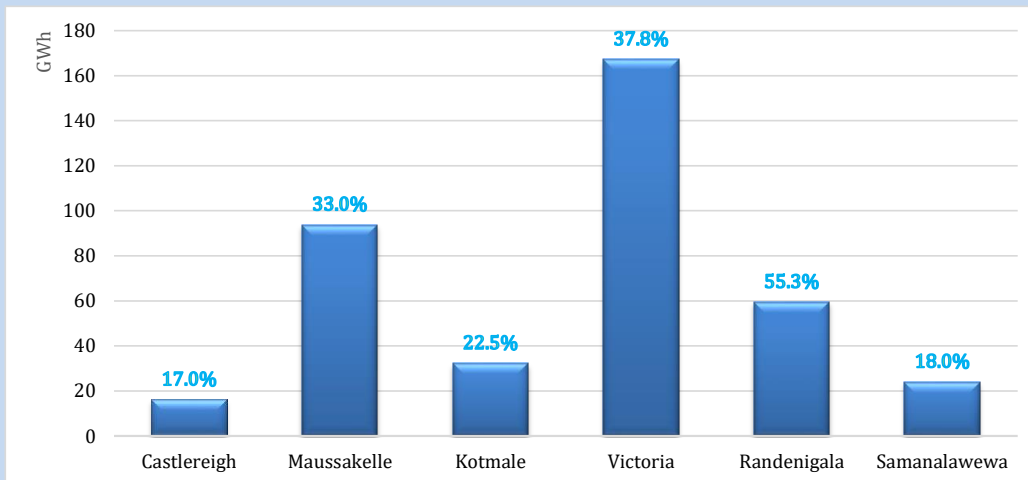
March 16, 2022



Night Peak*	2,564.7 MW
Day Peak	2,012.1 MW
Minimum Demand	1,548.0 MW

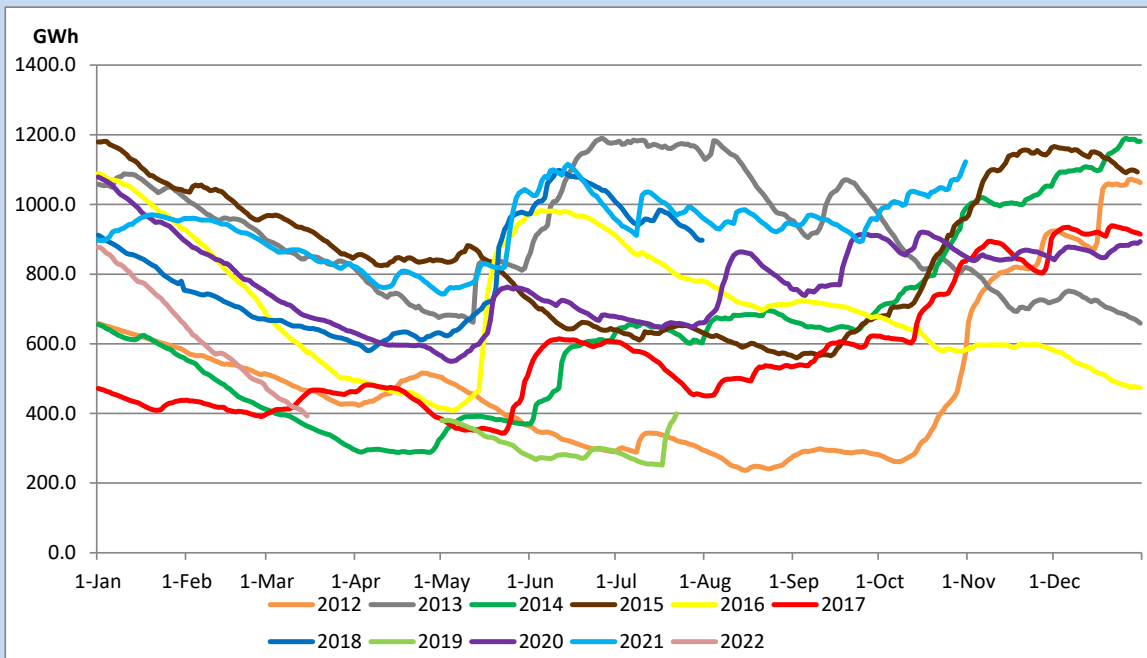
Above figures are excluding contribution from Roof Top Solar, 1MW solar, certain Wind plants and Mini Hydro plants

Reservoir Levels - as at 06.00 Hr on March 17, 2022



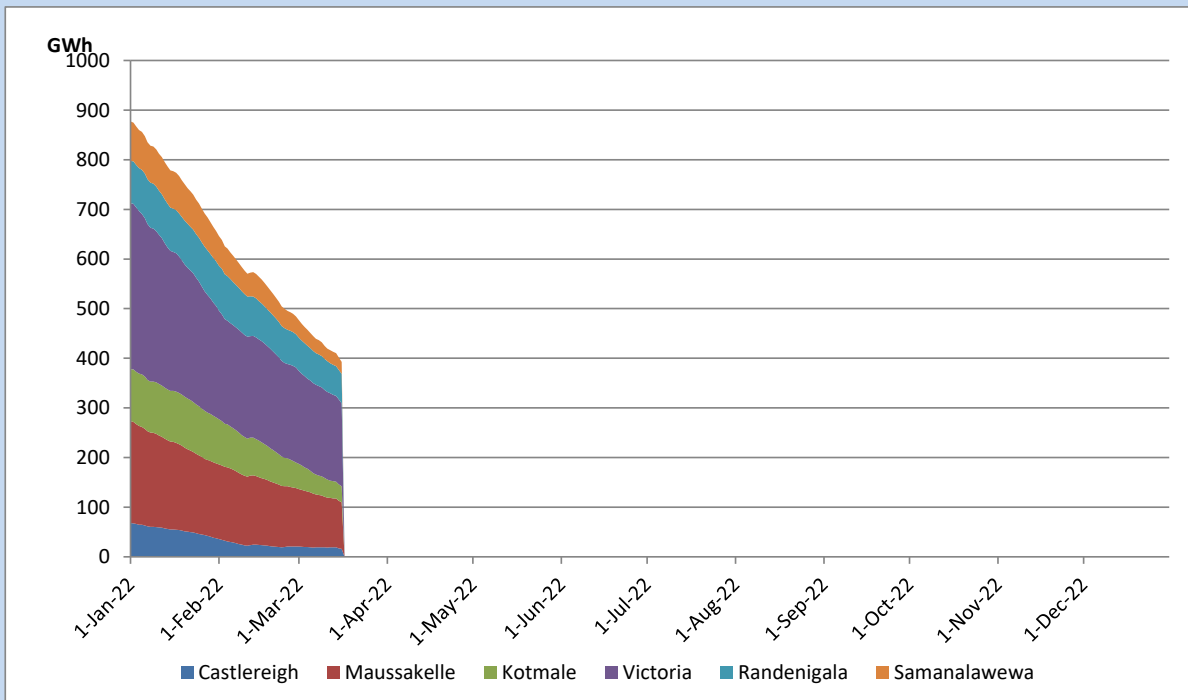
Total Reservoir Level	392.7 GWh
% of Total capacity	30.6%

Comparison of Total Reservoir Storage Levels with Past Years

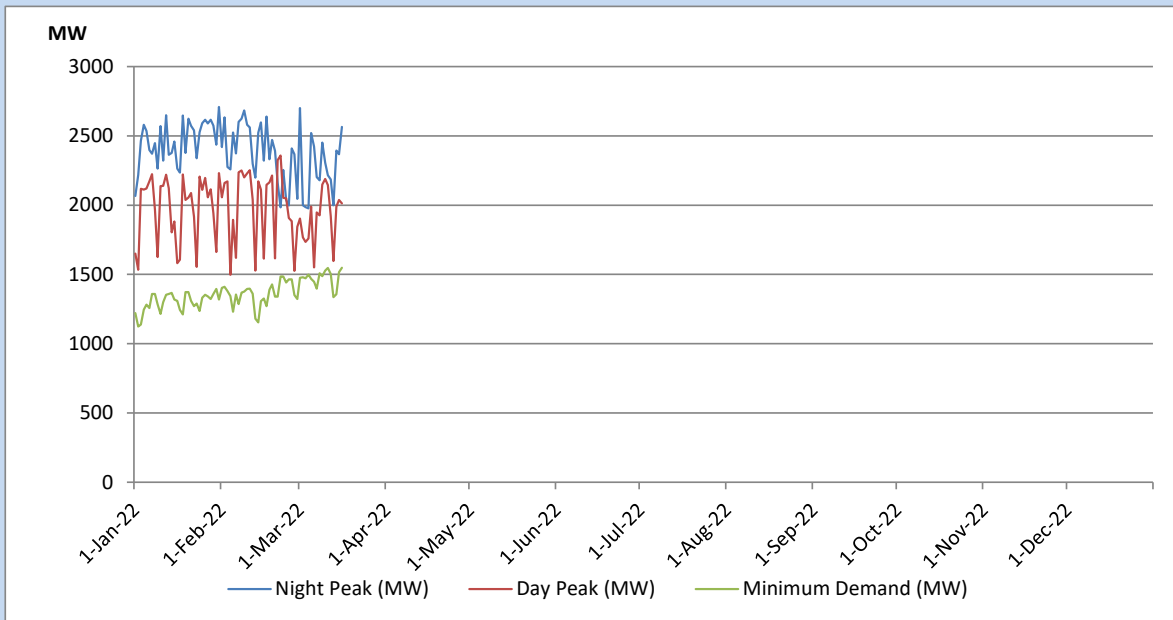


Data for 2018 and 2019 are only available for part of year.

Variation of Major Hydro Reservoir Levels in the current year (GWh)



Variation of Demand during the current year

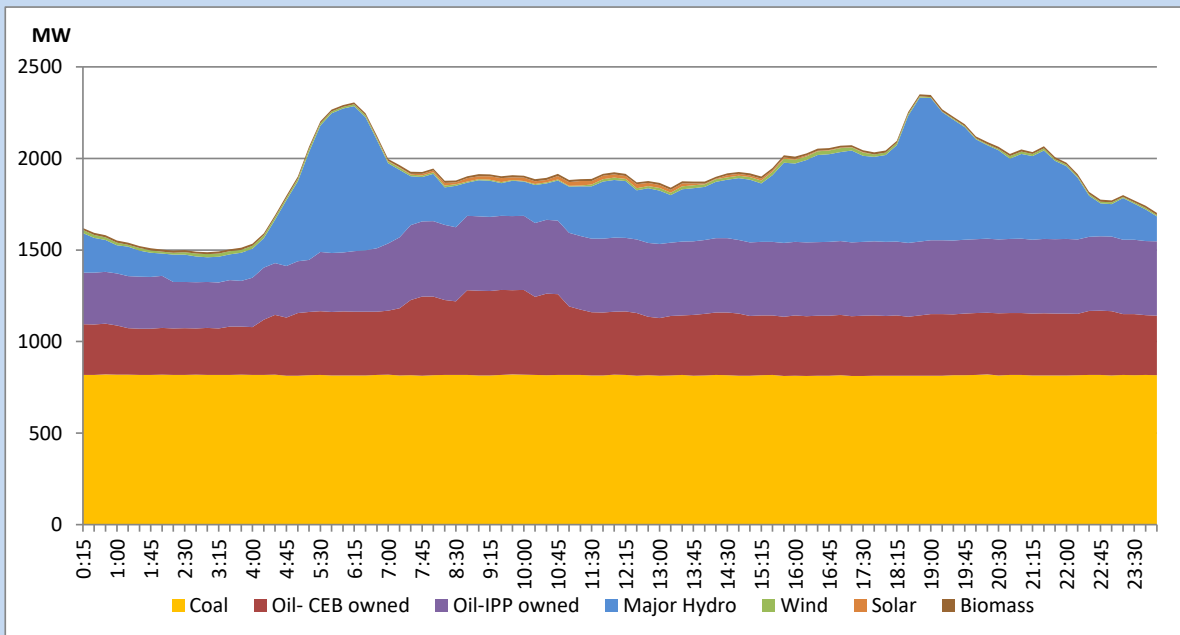


The above figures are excluding contribution from Roof Top Solar, 1MW solar, certain Wind plants and Mini Hydro plants

Daily Load Curve of the Previous day

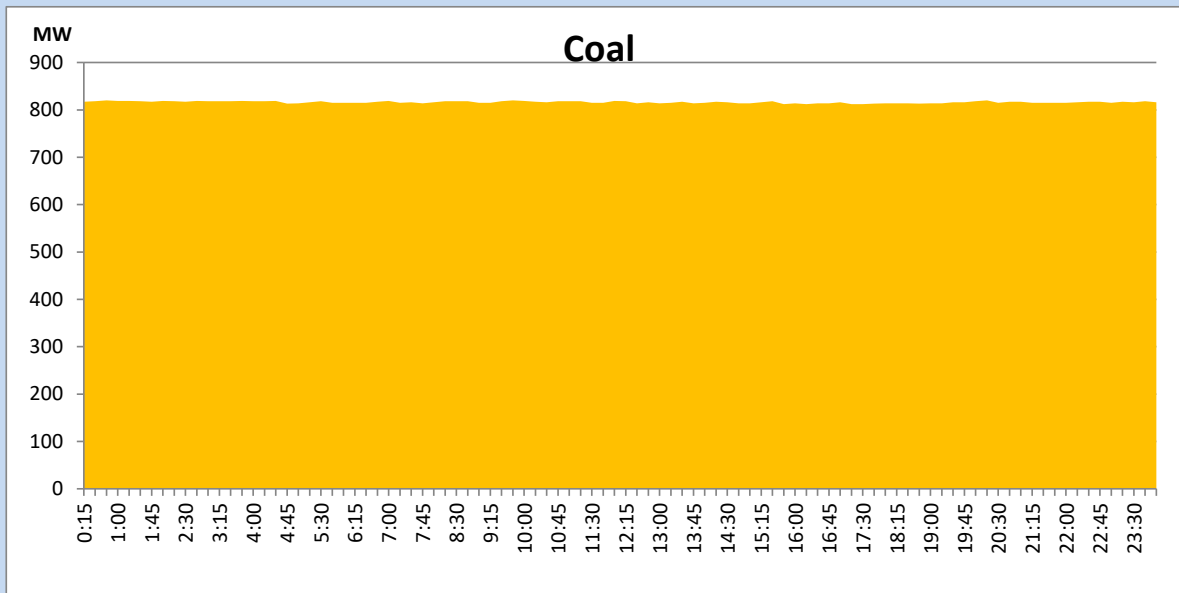
March 15, 2022

Solar and wind data is based on Telemetered Power Stations only



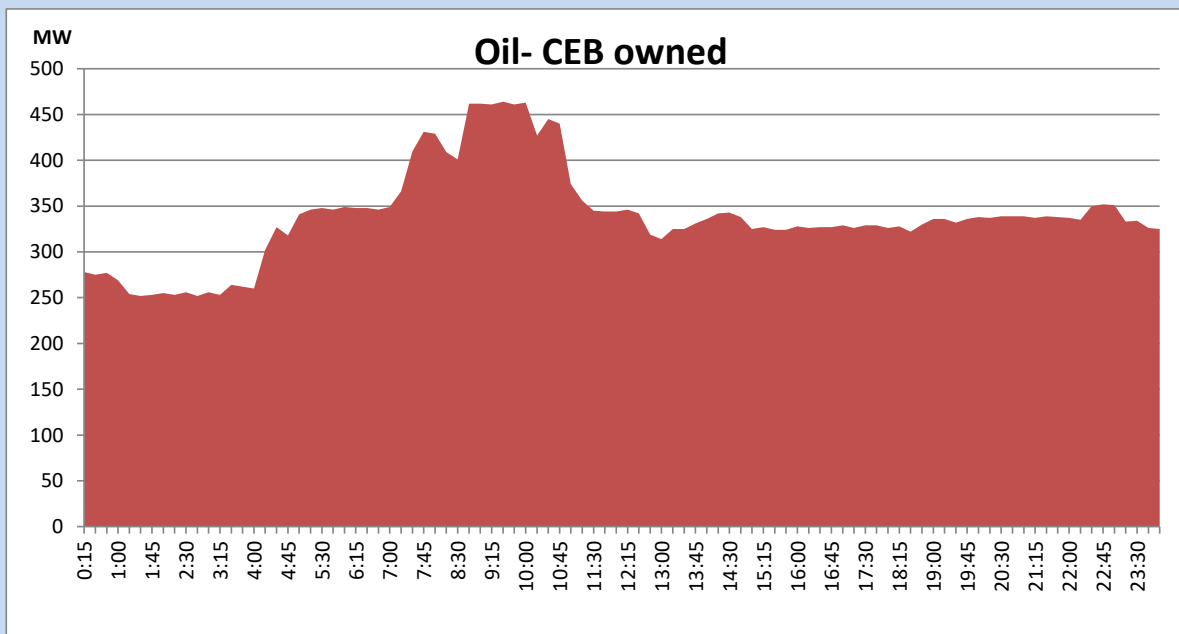
Coal Generation during the Previous day

March 15, 2022



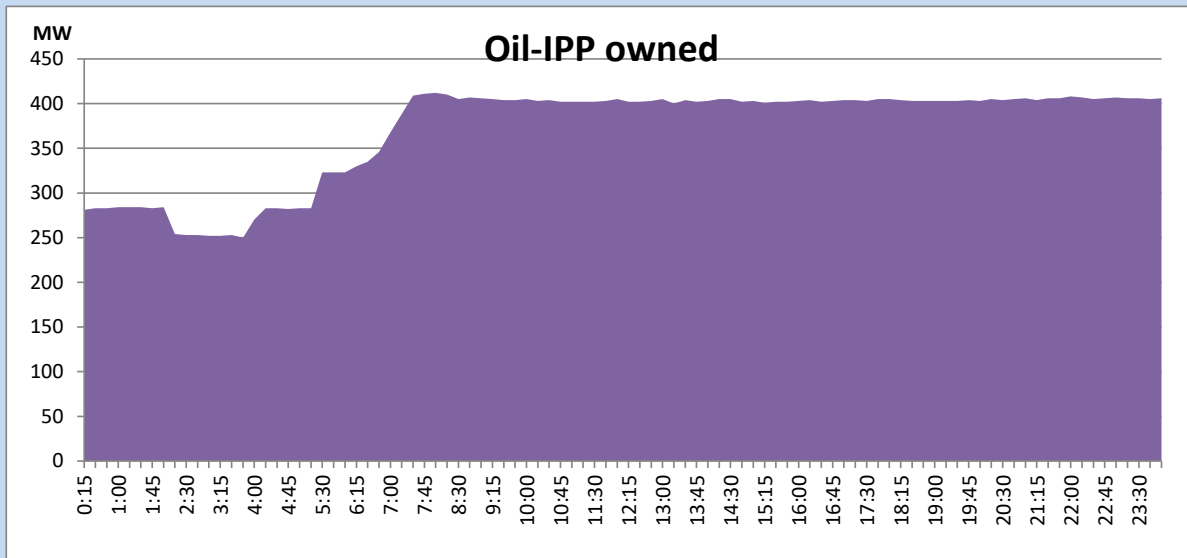
CEB Oil Plant Generation during the Previous day

March 15, 2022



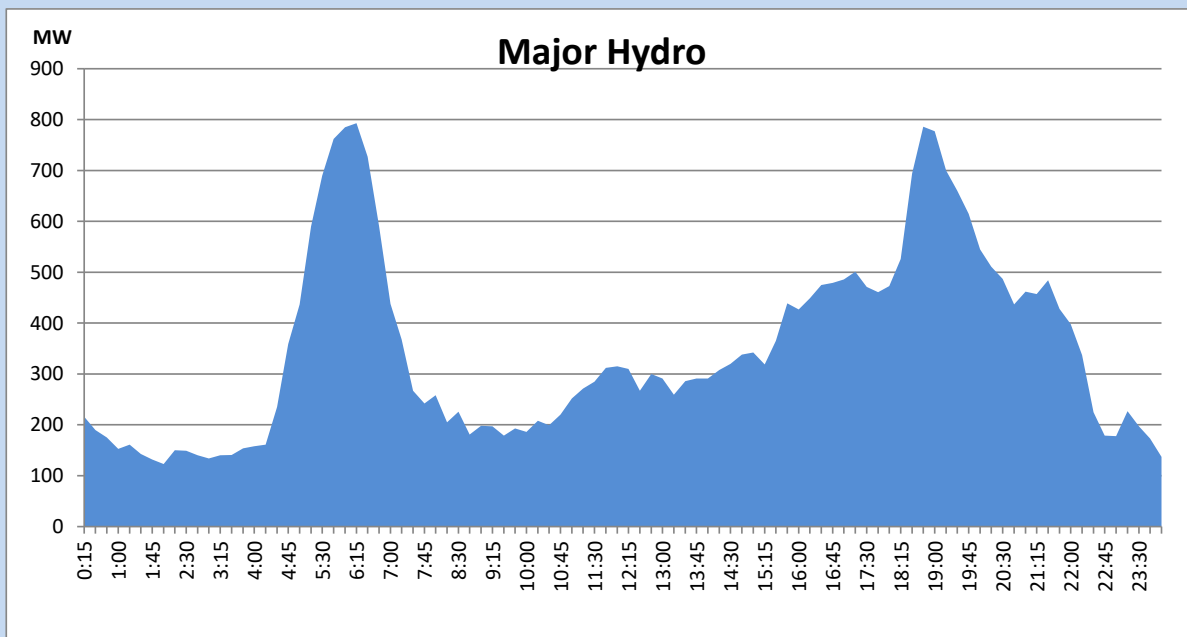
IPP Oil Plant Generation during the Previous day

March 15, 2022



Major Hydro Generation during the Previous day

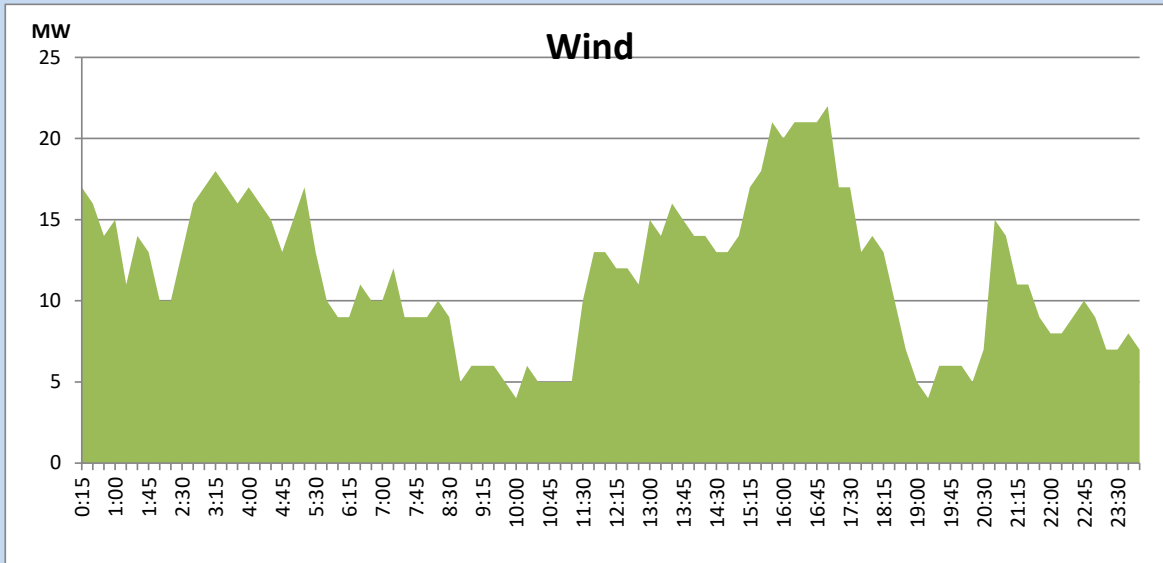
March 15, 2022



Wind Generation during the Previous day

March 15, 2022

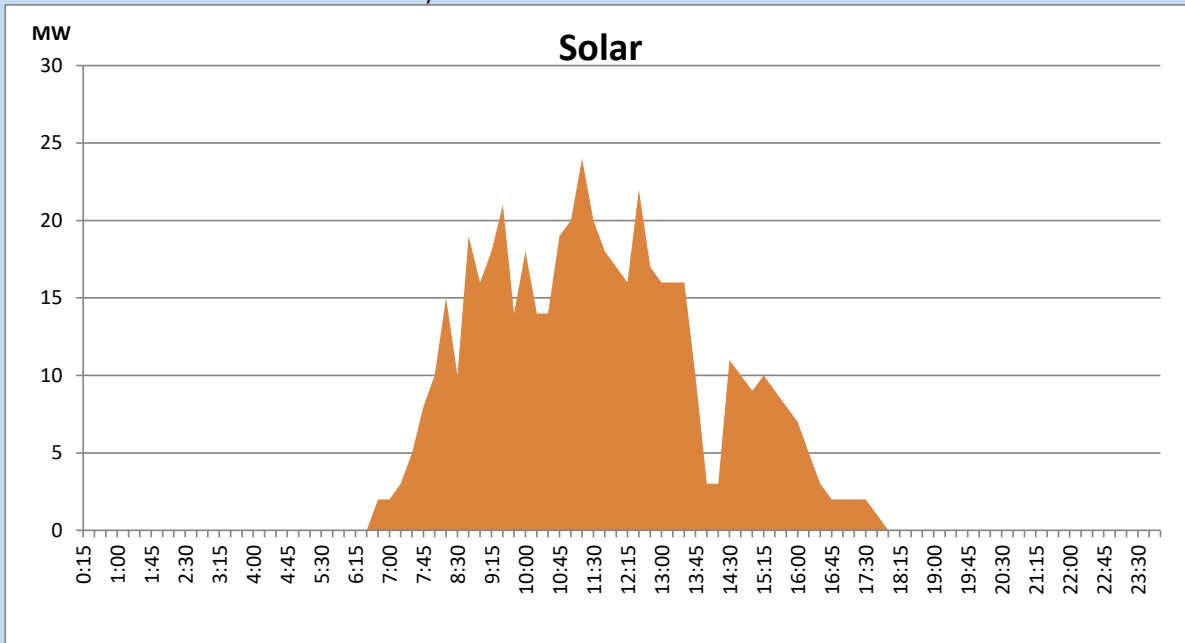
Based on Telemetered Power Stations only



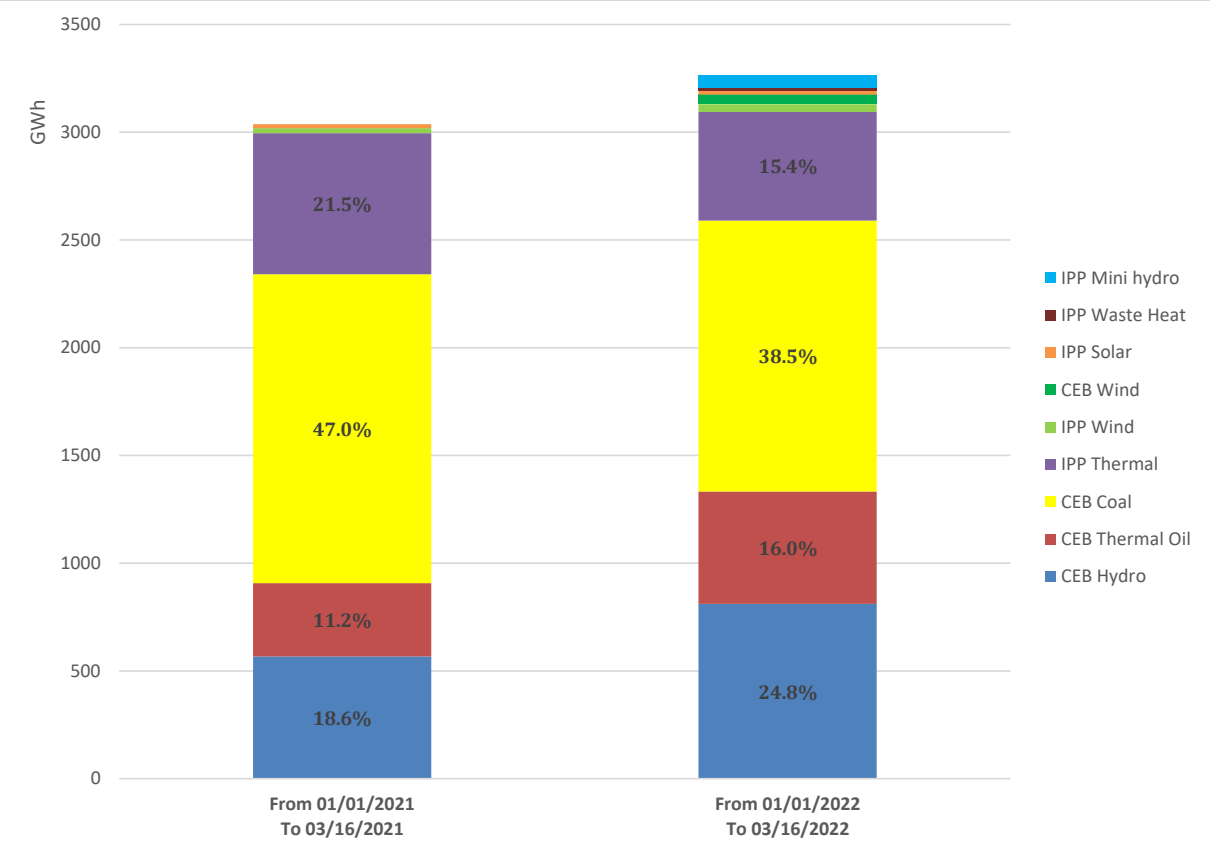
Solar Generation during the Previous day

March 15, 2022

Based on Telemetered Power Stations only



Cumulative Dispatch Comparison with Last Year



Thermal Plant Fuel types

Power Station	Primary Fuel
CEB Thermal	
Sapugaskanda 1	Heavy Fuel
Sapugaskanda 2	Heavy Fuel
Kelanitissa Small Gas Turbines	Auto Diesel
GT 7 - Kelanitissa	Auto Diesel
Kelanitissa CCY	Naphtha & Diesel
Lakvijaya 1	Coal
Lakvijaya 2	Coal
Lakvijaya 3	Coal
Uthuru Janani	Heavy Fuel
Barge CEB	Heavy Fuel

Power Station	Primary Fuel
Private Thermal	
Sojitz - Kelanitissa	Auto Diesel
West Coast	Heavy Fuel

Major Incidents during the day -as reported by CEB morning of

March 17, 2022

- 1) Rotational manual load shedding was carried out from 08:00hrs to 23:00hrs.
- 2) Biyagama - Sapugaskanda PS cct 02 tripped at 12:06hrs due to operation of distance protection.
Biyagama - Sapugaskanda PS cct 02 was restored at 12:15hrs.