

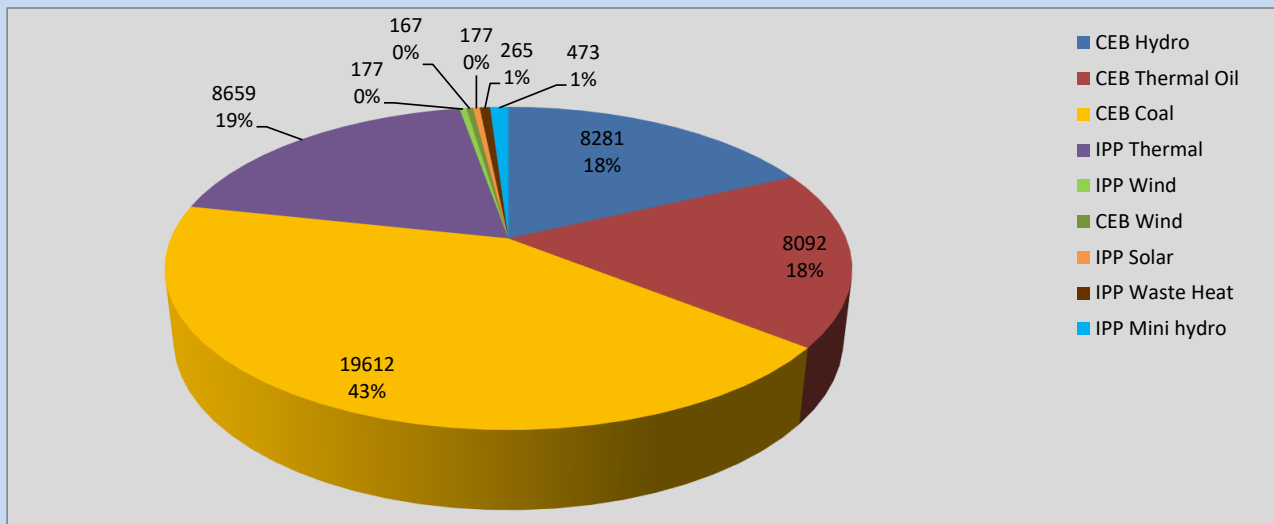
Generation and Reservoirs Statistics

March 15, 2022



PUBLIC UTILITIES COMMISSION OF SRI LANKA

Daily Generation Mix in MWh



Total Generation **45,972 MWh**

Note: Above data is excluding contribution from Roof Top Solar, 1MW Solar and certain Mini Hydro plants

Cumulative Dispatch

Note: Following data is Excluding contribution from Roof Top Solar, 1MW solar and Mini Hydro plants

For Current Month

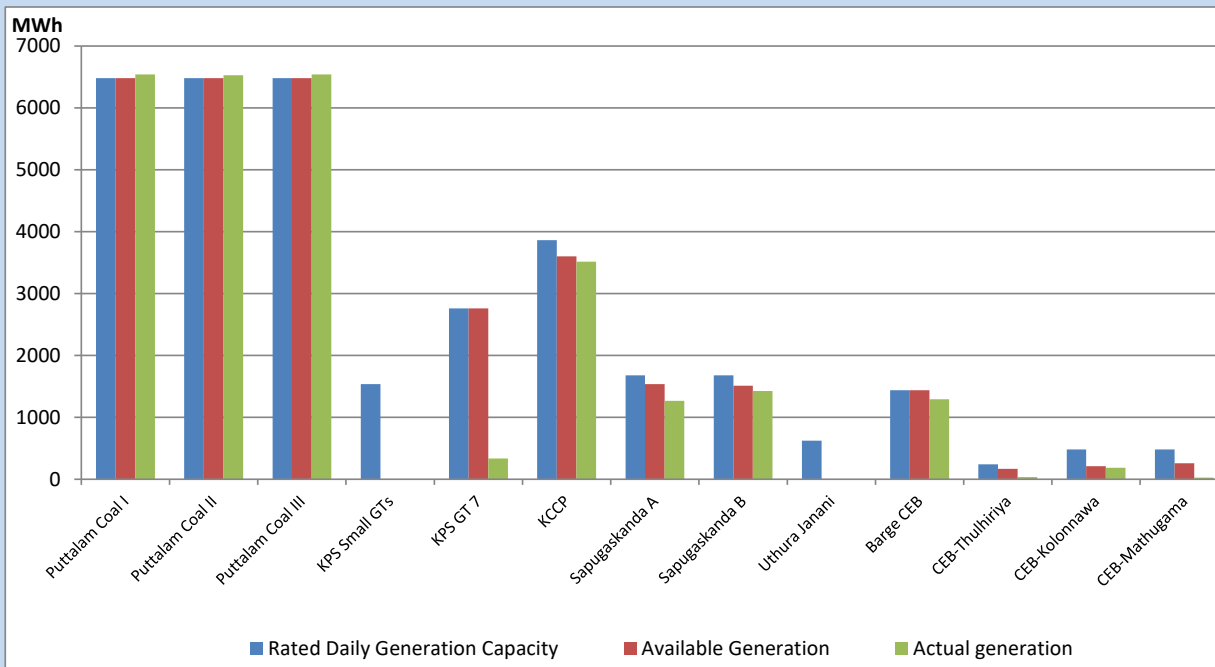
Category	Dispatch (GWh)	Percentage
CEB Hydro	122.28	18.59%
CEB Thermal Oil	104.91	15.95%
CEB Coal	293.94	44.69%
IPP Thermal	102.88	15.64%
SPP Wind	7.41	1.13%
CEB Wind	10.74	1.63%
SPP Solar	3.83	0.58%
SPP Solid Waste	3.35	0.51%
Mini Hydro	8.35	1.27%
Total	657.69	

For Current Year

Category	Dispatch (GWh)	Percentage
CEB Hydro	800.1	24.84%
CEB Thermal Oil	517.1	16.06%
CEB Coal	1,237.5	38.42%
IPP Thermal	494.3	15.35%
SPP Wind	35.5	1.10%
CEB Wind	45.0	1.40%
SPP Solar	19.1	0.59%
SPP Solid Waste	14.5	0.45%
Mini Hydro	58.1	1.80%
Total	3,220.9	

CEB owned Thermal Plant Dispatch

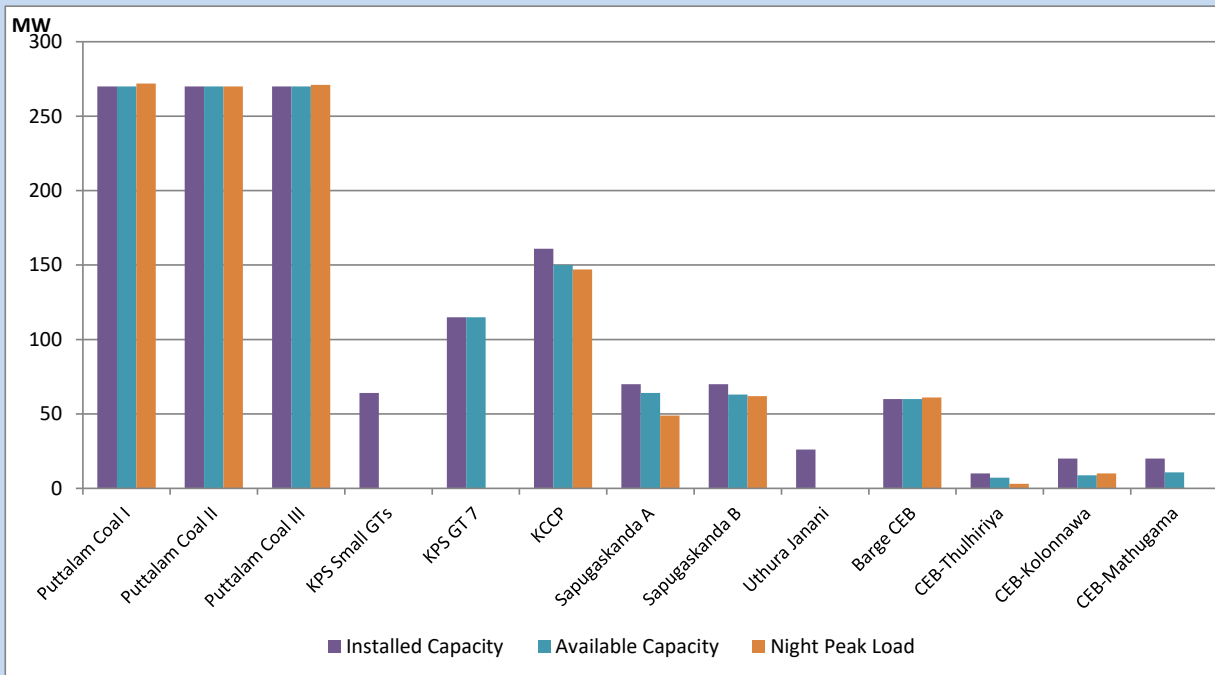
March 15, 2022



Available Generation is estimated based on plant availability at 6.00am on

March 16, 2022

CEB owned Thermal Plant Loading at the Night Peak



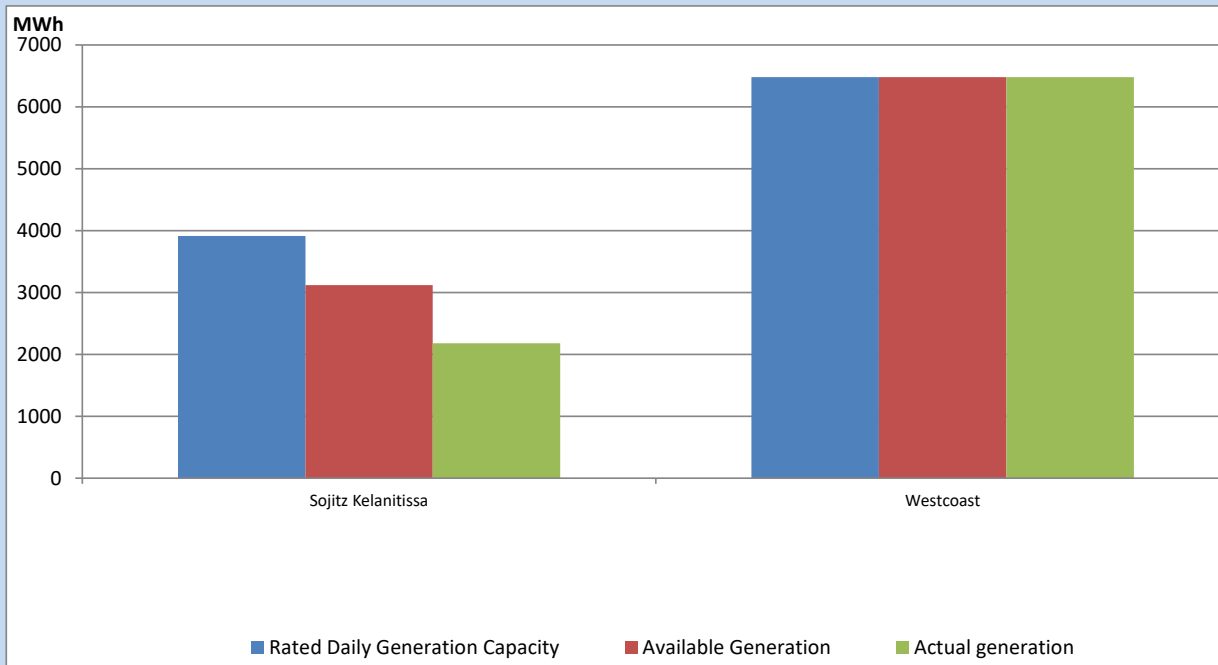
Note- Plant availability is recorded at 6.00 am on

March 16, 2022

IPP owned Thermal Plant Dispatch

March 15, 2022

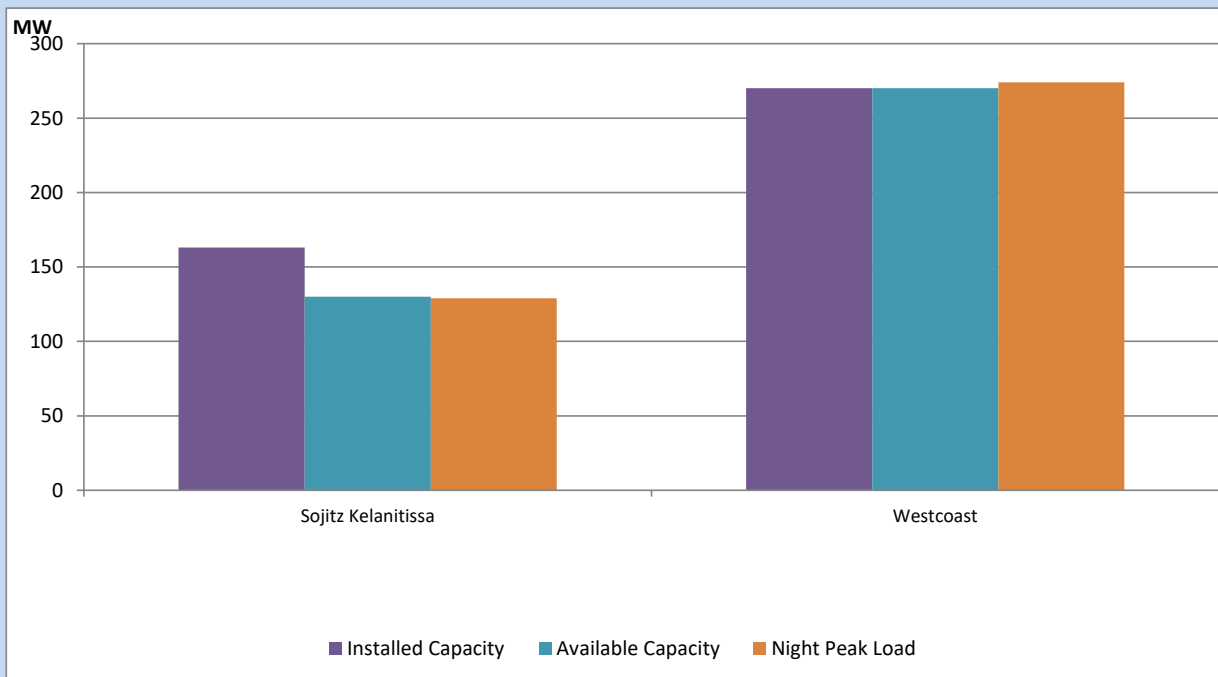
ACE Embilipitiya, ACE Matara, Asia Power, V Power Pallekale, Vpower Galle, V Power Horana, Vpower Hambantota, Vpower Valachchena and Altaqa Mahiyanganaya are not available due to expiration of PPAs



Available Generation is estimated based on plant availability at 6.00am on

March 16, 2022

IPP owned Thermal Plant Loading at the Night Peak

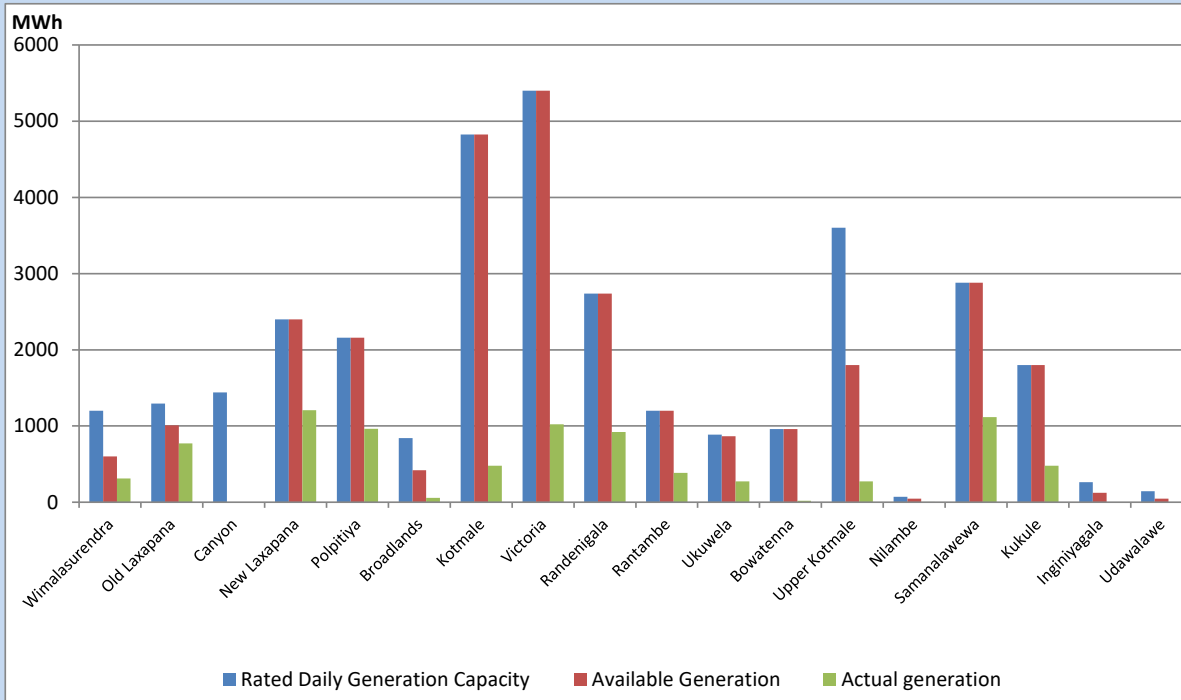


Note- Plant availability is recorded at 6.00 am on

March 16, 2022

Major Hydro Plant Dispatch

March 15, 2022

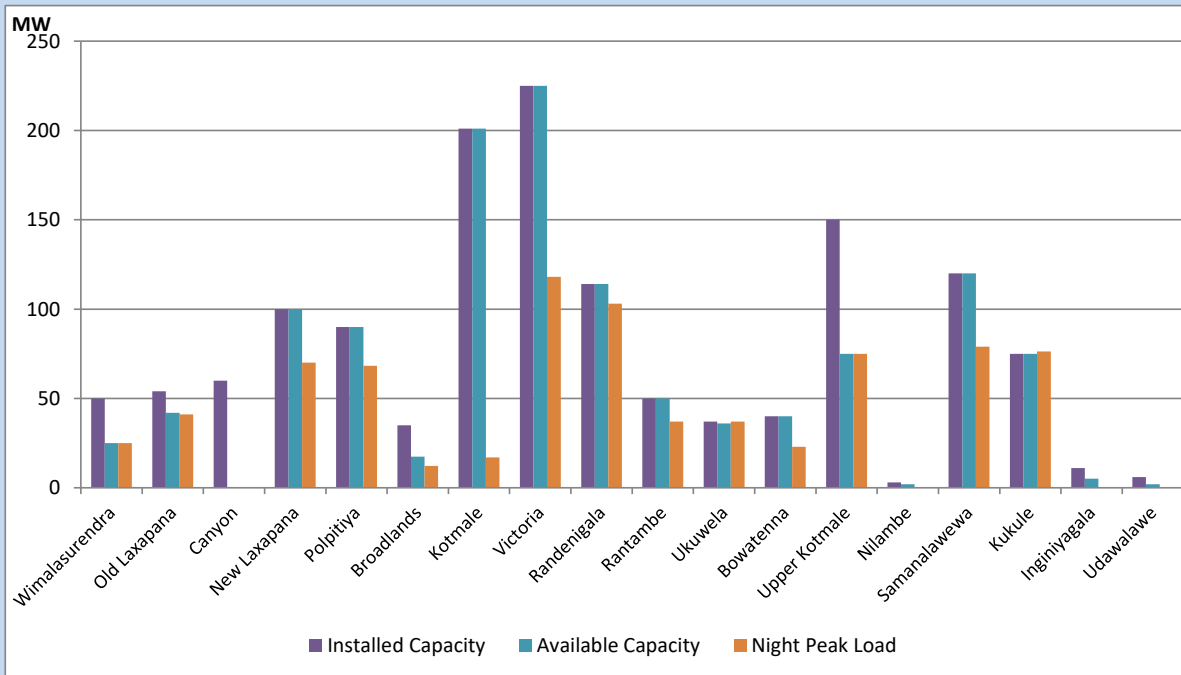


Available Generation is estimated based on plant availability at 6.00am on
Broadlands power plant is operating in the Commissioning Stage

March 16, 2022

Major Hydro Plant Loading at Night Peak

March 15, 2022



Note- Plant availability is recorded at 6.00 am on
Broadlands power plant is operating in the Commissioning Stage

March 16, 2022

Summary of Major Plant performance

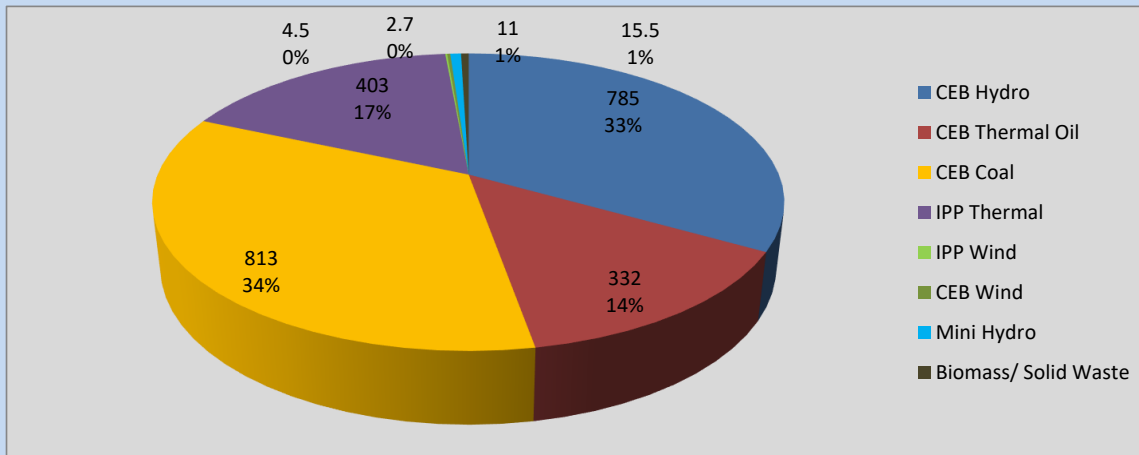
Plant	Installed Capacity	Plant Availability	Night peak Load	Plant Dispatch
	(MW)	(MW)	(MW)	(MWh)
Wimalasurendra	50	25	25	311
Old Laxapana	54	42	41	772
Canyon	60	0	0	0
New Laxapana	100	100	70	1,208
Polpitiya	90	90	68	962
Broadlands	35	18	12	57
Kotmale	201	201	17	480
Victoria	225	225	118	1,024
Randenigala	114	114	103	920
Rantambe	50	50	37	383
Ukuwela	37	36	37	272
Bowatenna	40	40	23	20
Upper Kotmale	150	75	75	274
Nilambe	3	2	0	3
Samanalawewa	120	120	79	1,117
Kukule	75	75	76	478
Inginiyagala	11	5	0	0
Udawalawe	6	2	0	0
Puttalam Coal I	270	270	272	6,542
Puttalam Coal II	270	270	270	6,528
Puttalam Coal III	270	270	271	6,542
KPS Small GTs	64	0	0	0
KPS GT 7	115	115	0	337
KCCP	161	150	147	3,518
Sapugaskanda A	70	64	49	1,267
Sapugaskanda B	70	63	62	1,428
Uthura Janani	26	0	0	0
Barge CEB	60	60	61	1,295
CEB-Thulhiriya	10	7	3	35
CEB-Kolonnawa	20	9	10	184
CEB-Mathugama	20	11	0	28
Sojitz Kelanitissa	163	130	129	2,180
West Coast	270	270	274	6,479
Total	3,280	2,908	2,364	45,972

Plant availability is the availability recorded at 6 am on

March 16, 2022

Contribution to the Night Peak in MW

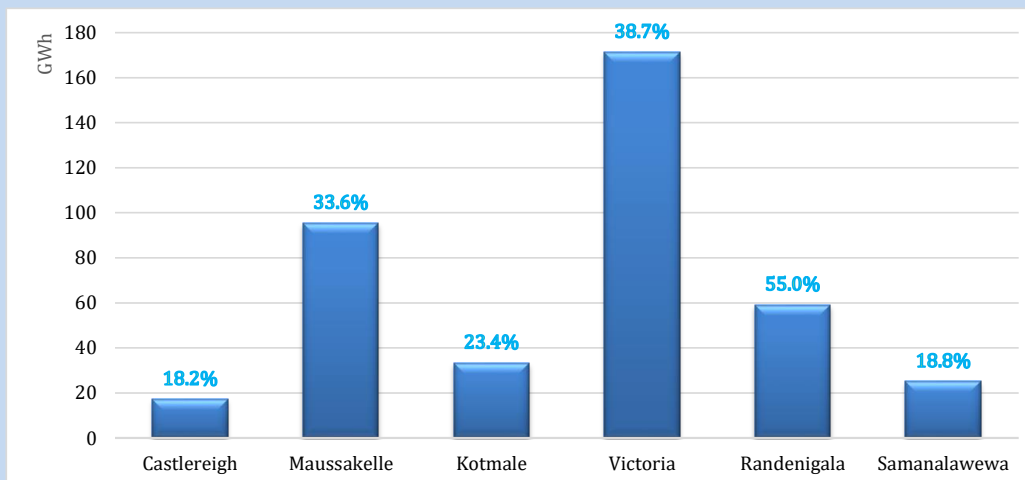
March 15, 2022



Night Peak*	2,366.5 MW
Day Peak	2,037.4 MW
Minimum Demand	1,516.6 MW

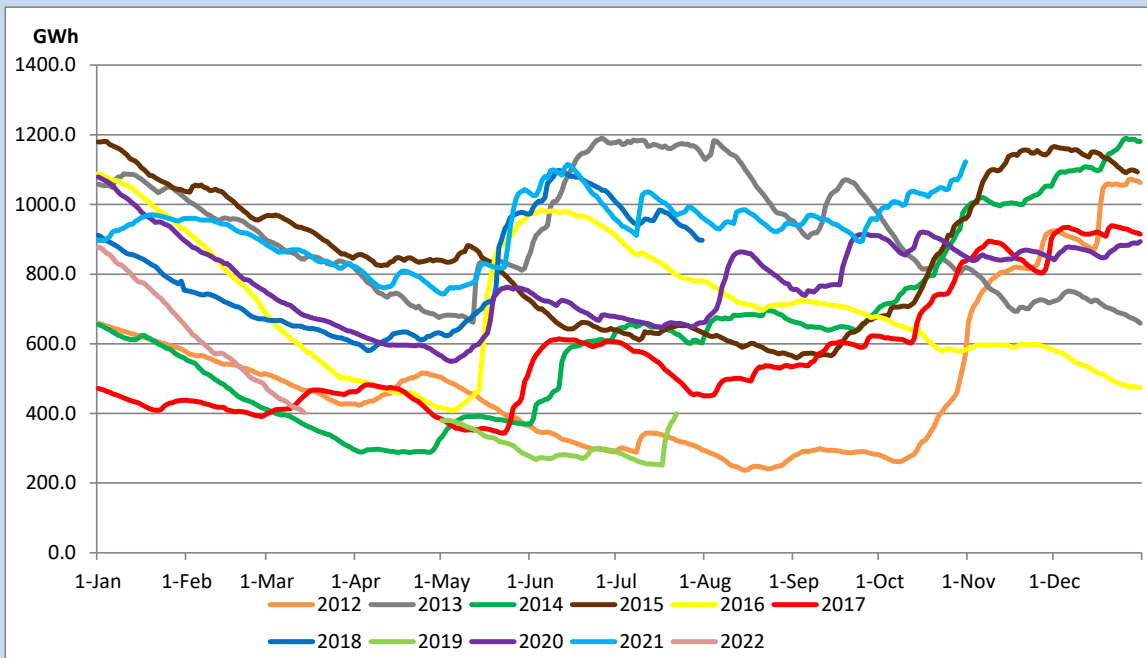
Above figures are excluding contribution from Roof Top Solar, 1MW solar, certain Wind plants and Mini Hydro plants

Reservoir Levels - as at 06.00 Hr on March 16, 2022



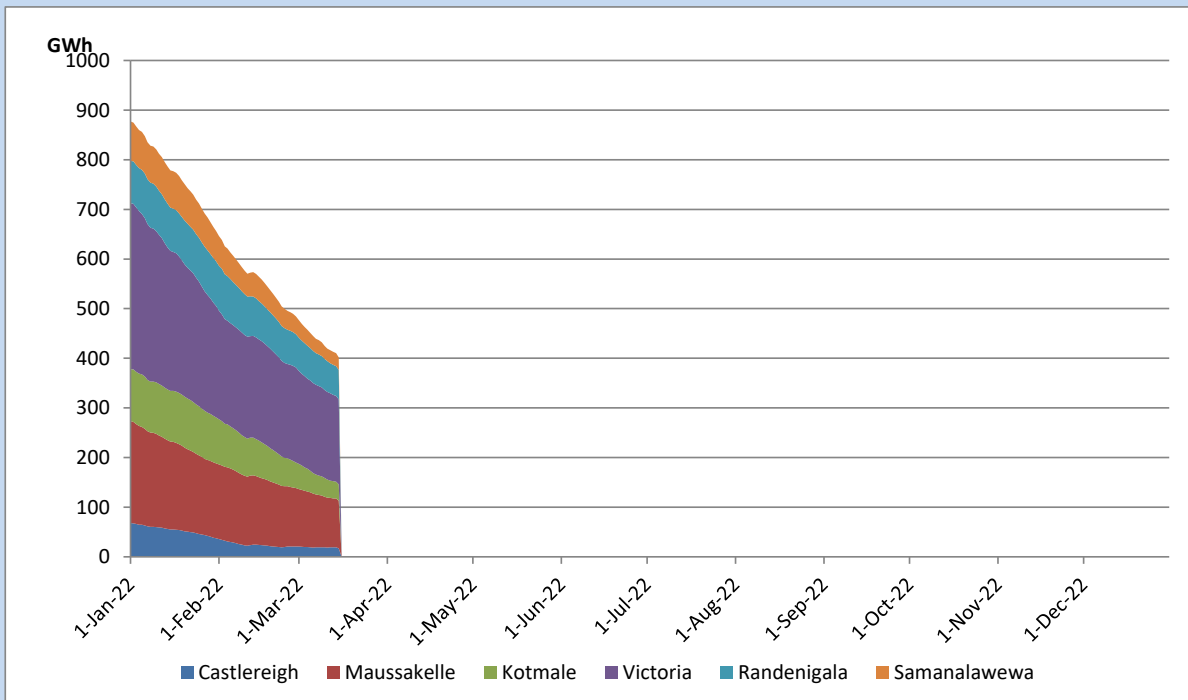
Total Reservoir Level	401.8 GWh
% of Total capacity	31.3%

Comparison of Total Reservoir Storage Levels with Past Years

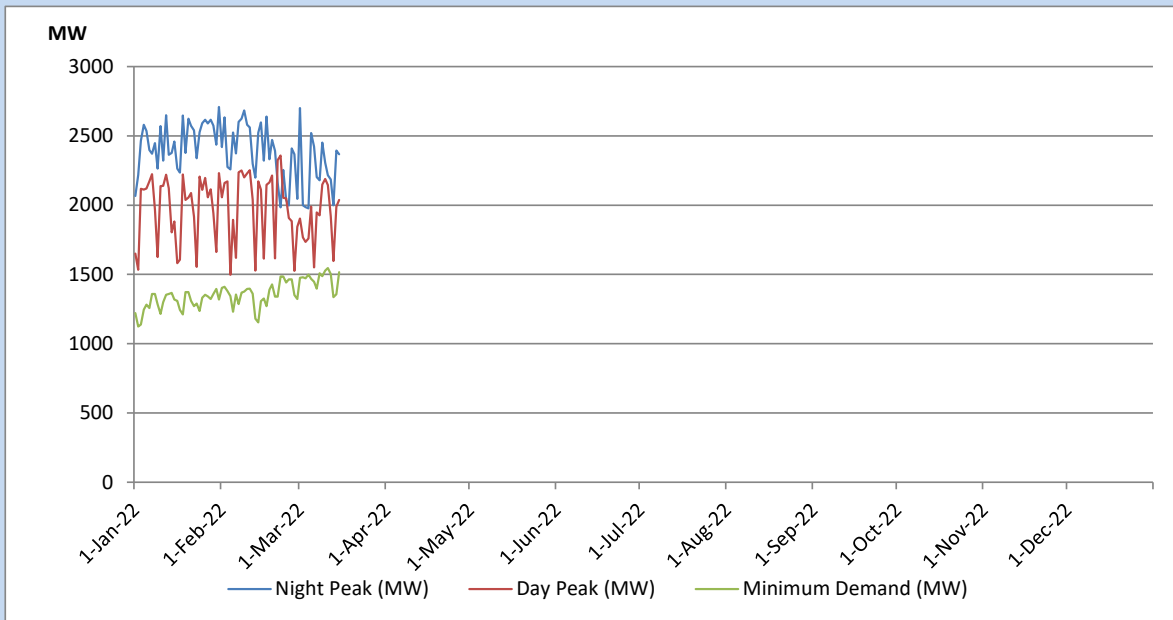


Data for 2018 and 2019 are only available for part of year.

Variation of Major Hydro Reservoir Levels in the current year (GWh)



Variation of Demand during the current year

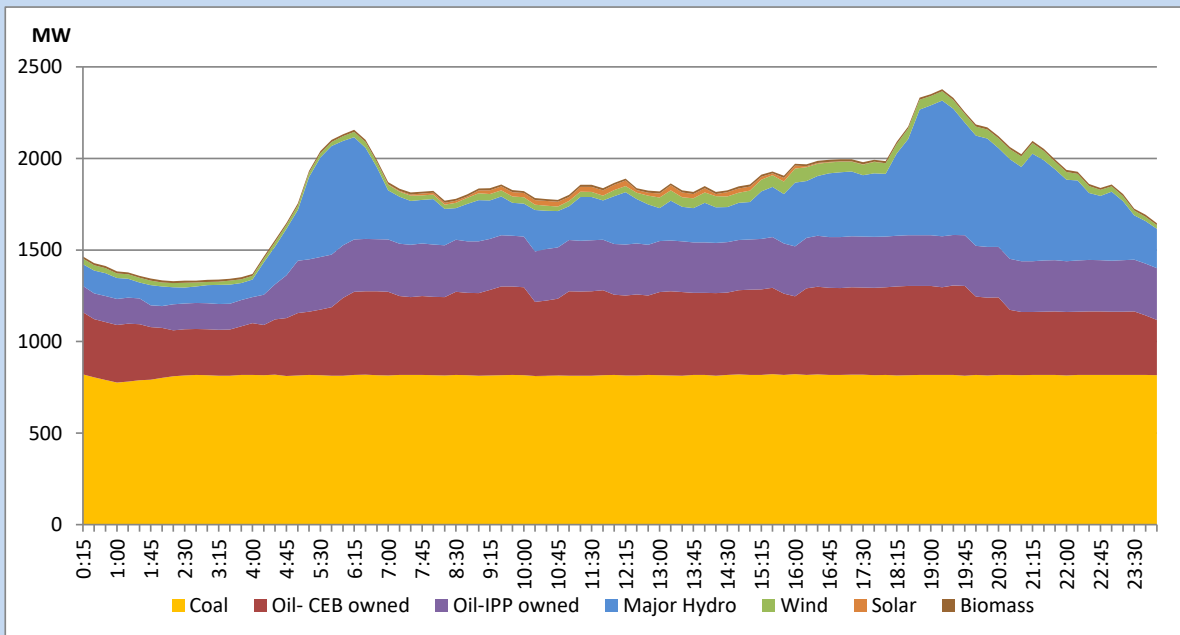


The above figures are excluding contribution from Roof Top Solar, 1MW solar, certain Wind plants and Mini Hydro plants

Daily Load Curve of the Previous day

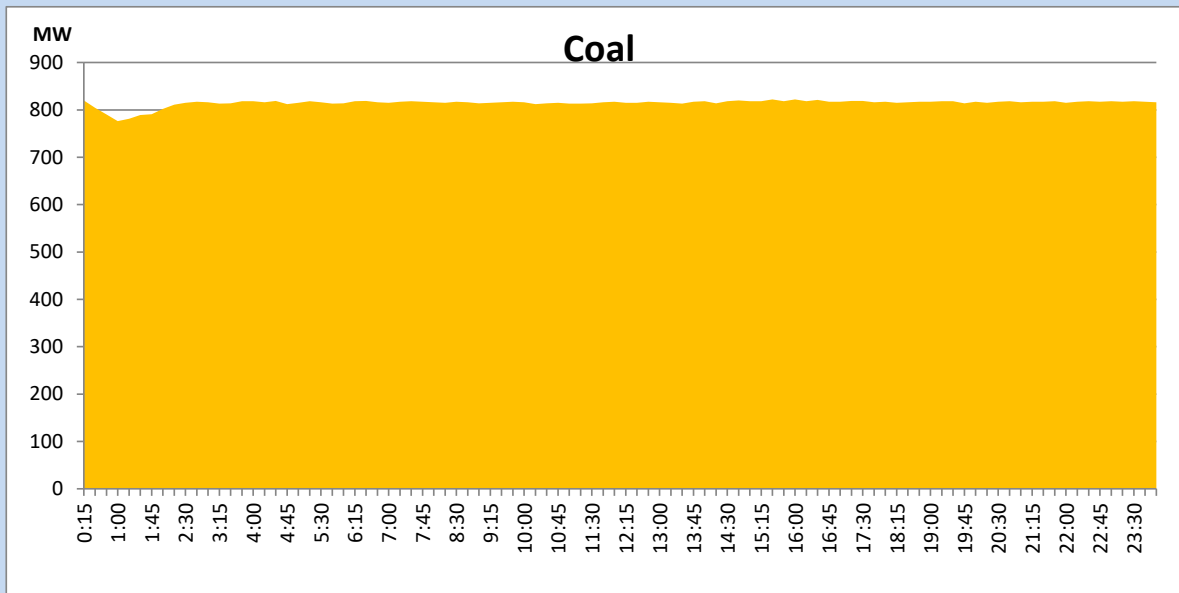
March 14, 2022

Solar and wind data is based on Telemetered Power Stations only



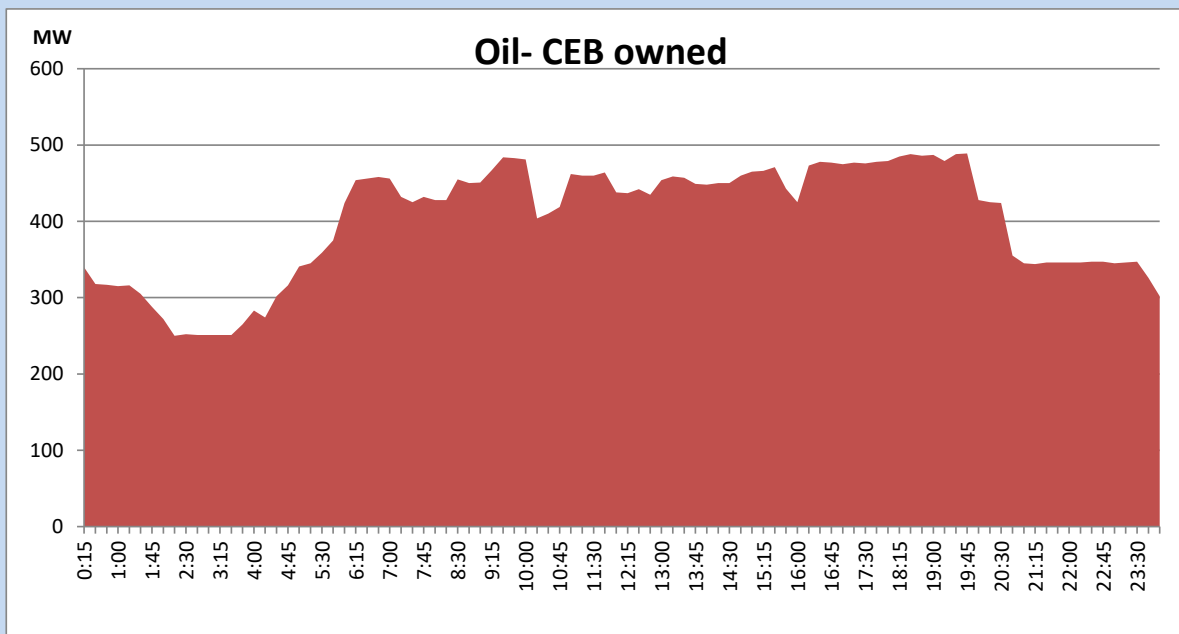
Coal Generation during the Previous day

March 14, 2022



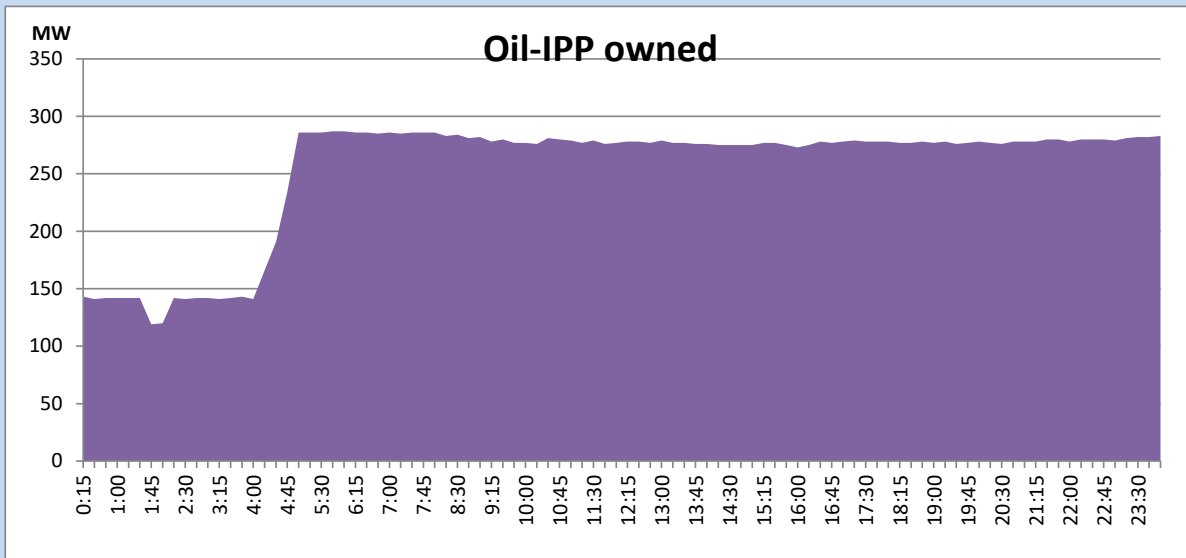
CEB Oil Plant Generation during the Previous day

March 14, 2022



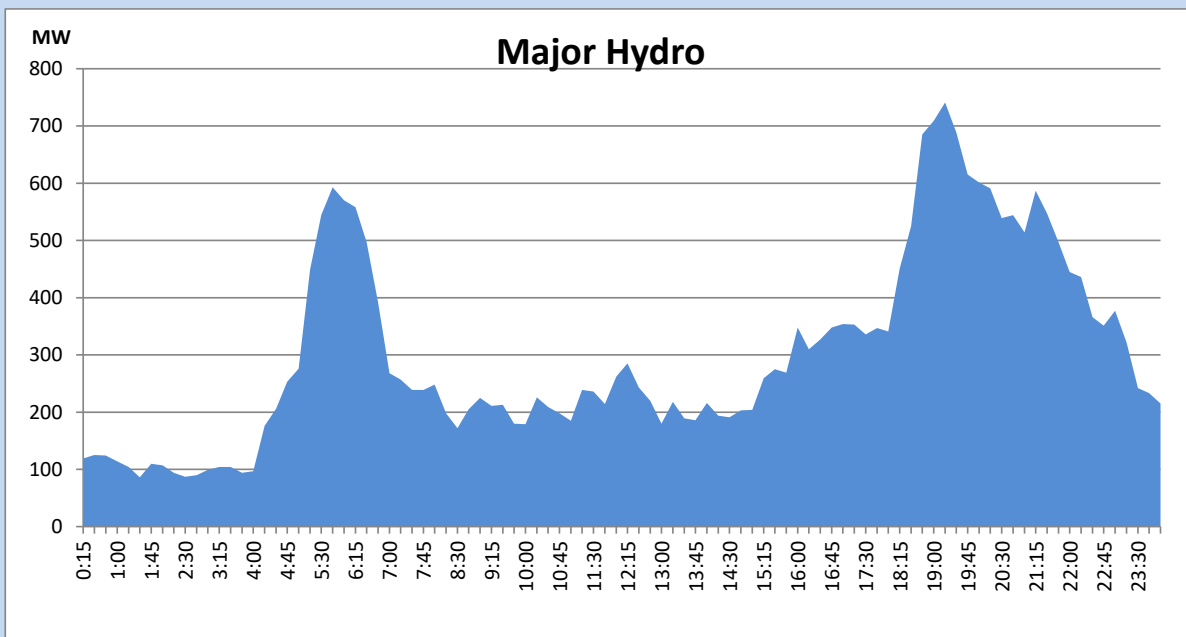
IPP Oil Plant Generation during the Previous day

March 14, 2022



Major Hydro Generation during the Previous day

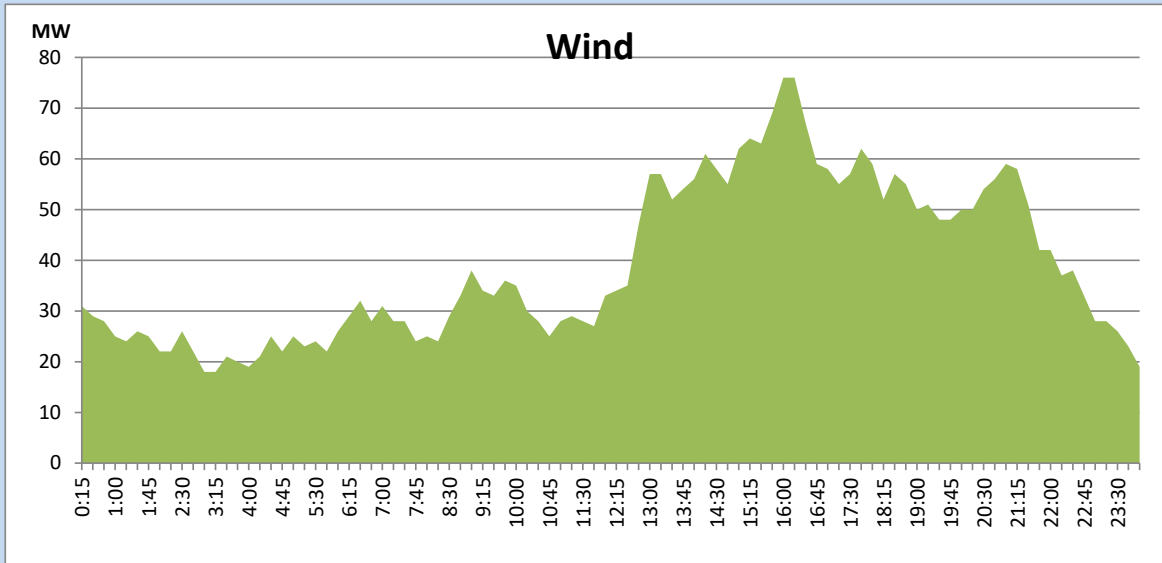
March 14, 2022



Wind Generation during the Previous day

March 14, 2022

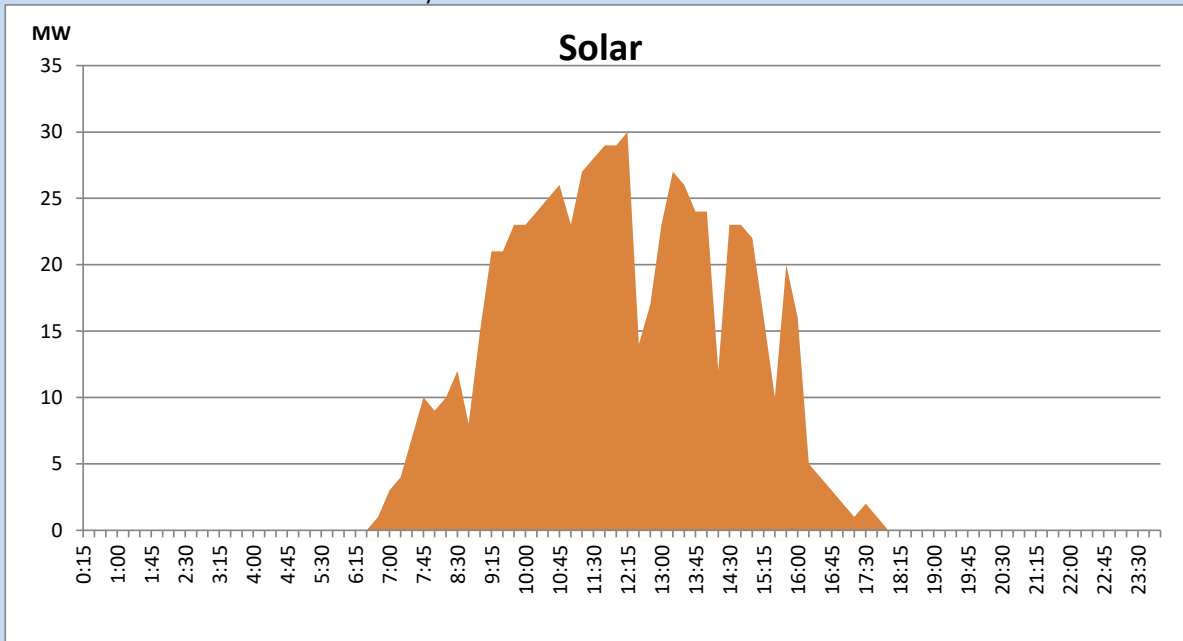
Based on Telemetered Power Stations only



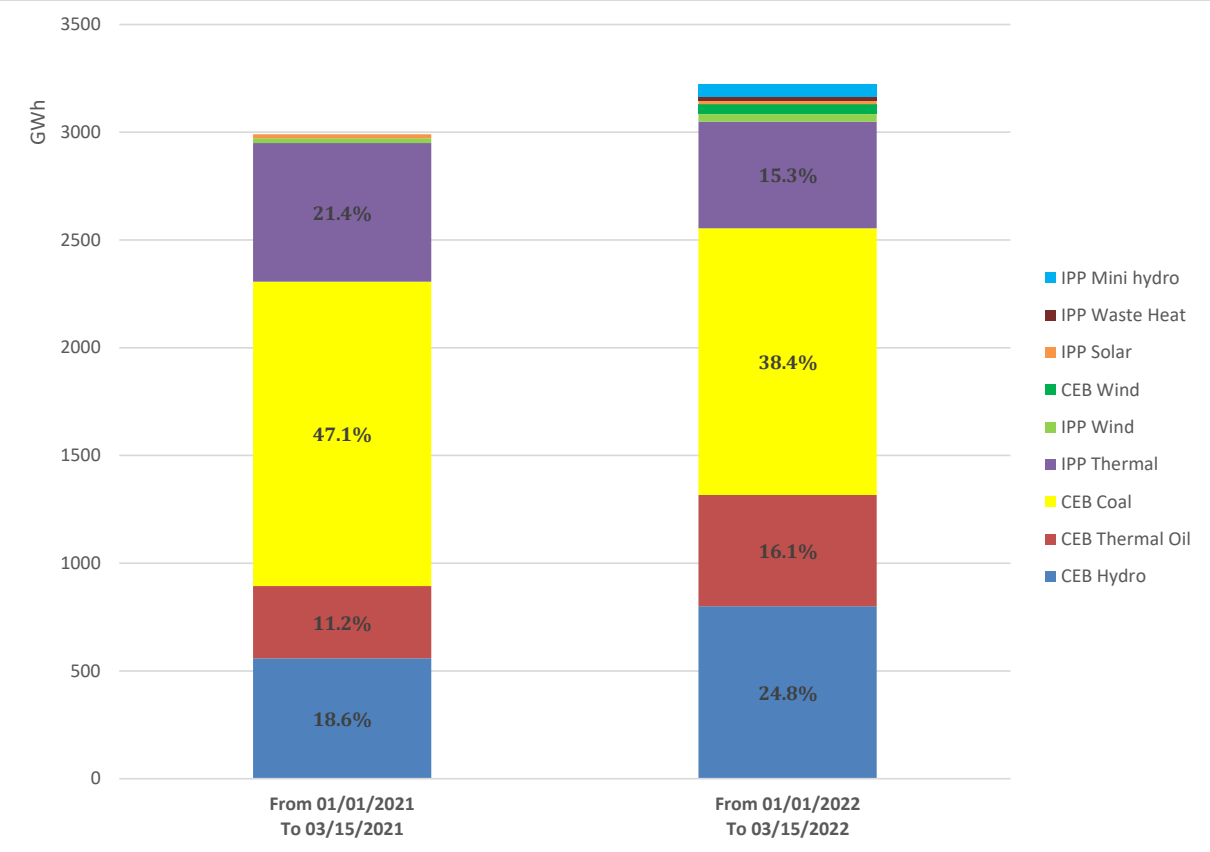
Solar Generation during the Previous day

March 14, 2022

Based on Telemetered Power Stations only



Cumulative Dispatch Comparison with Last Year



Thermal Plant Fuel types

Power Station	Primary Fuel
CEB Thermal	
Sapugaskanda 1	Heavy Fuel
Sapugaskanda 2	Heavy Fuel
Kelanitissa Small Gas Turbines	Auto Diesel
GT 7 - Kelanitissa	Auto Diesel
Kelanitissa CCY	Naphtha & Diesel
Lakvijaya 1	Coal
Lakvijaya 2	Coal
Lakvijaya 3	Coal
Uthuru Janani	Heavy Fuel
Barge CEB	Heavy Fuel

Power Station	Primary Fuel
Private Thermal	
Sojitz - Kelanitissa	Auto Diesel
West Coast	Heavy Fuel

Major Incidents during the day -as reported by CEB morning of

March 16, 2022

- 1) Rotational manual load shedding was carried out from 08:00hrs to 23:00hrs.
- 2) Killinochchi 132/33 kV T/F 02 tripped from 33kV side with both 33kV B/S circuit breakers at 9:33hrs due to E/F protection with the receipt of E/F indication in 33kV feeder 02 (not tripped). Killinochchi T/F 02 and both 33kV B/S circuit breakers switched on at 9:41hrs.
- 3) KPS GT07 performed a forced shutdown at 11:16hrs due to lack of fuel.
- 4) New Anu -Vauniya cct 01 tripped and A/R from both ends at 11:59hrs due to the operation of distance protection.
- 5) KCCP performed a forced shutdown at 02:26hrs on 16.03.2022 due to lack of fuel.