

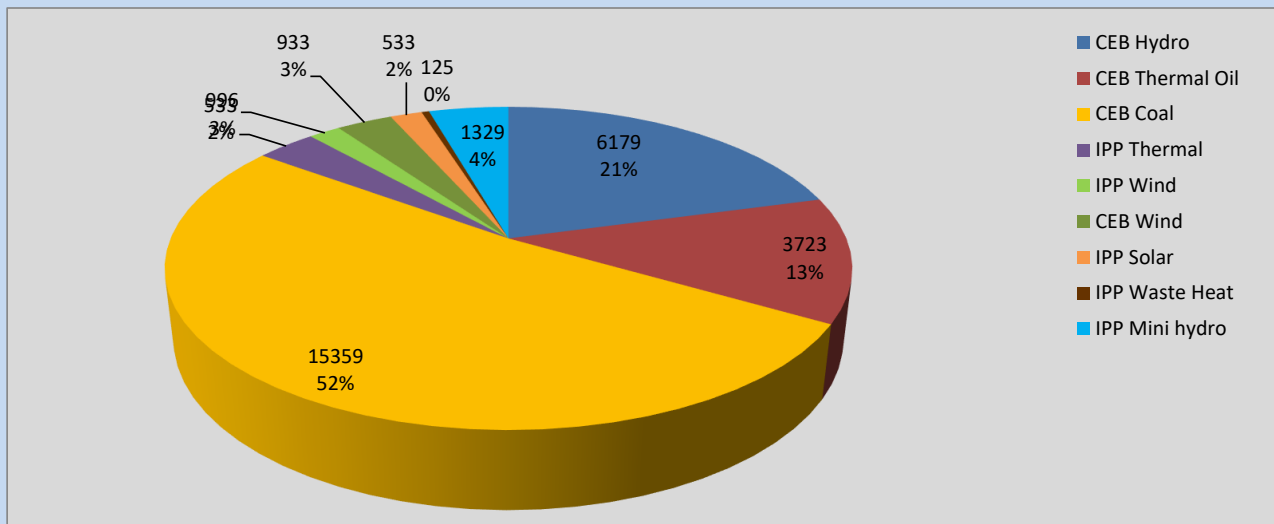
Generation and Reservoirs Statistics

April 14, 2022



PUBLIC UTILITIES COMMISSION OF SRI LANKA

Daily Generation Mix in MWh



Total Generation **29,475 MWh**

Note: Above data is excluding contribution from Roof Top Solar, 1MW Solar and certain Mini Hydro plants

Cumulative Dispatch

Note: Following data is Excluding contribution from Roof Top Solar, 1MW solar and Mini Hydro plants

For Current Month

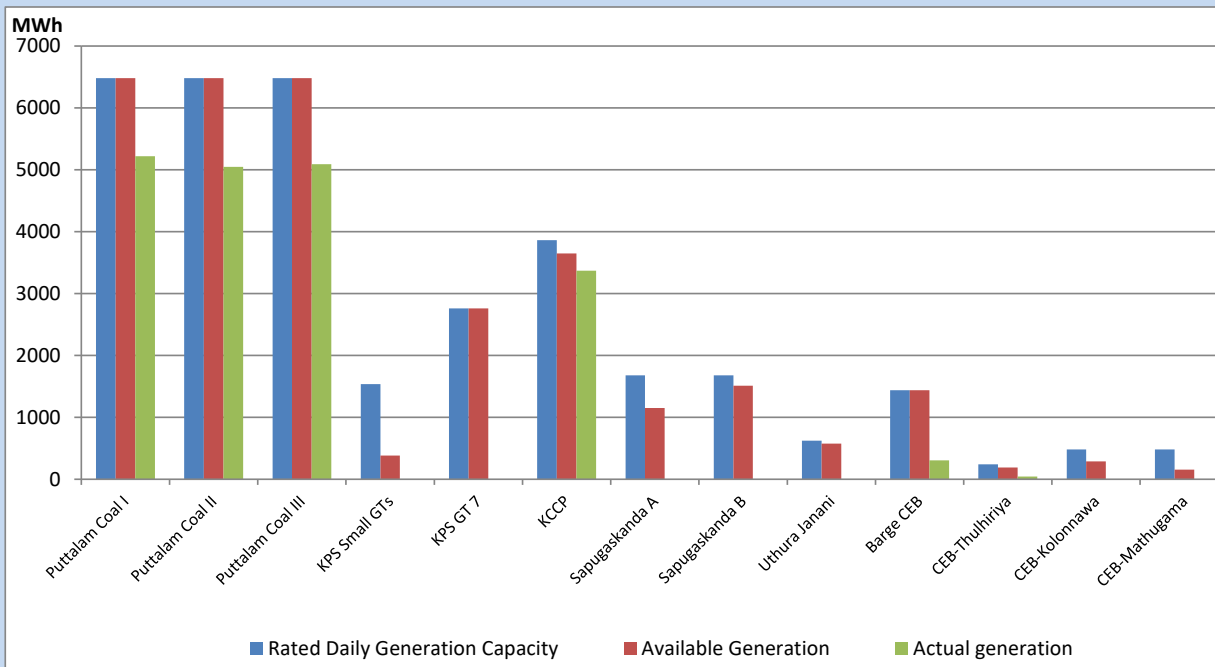
Category	Dispatch (GWh)	Percentage
CEB Hydro	107.31	21.41%
CEB Thermal Oil	43.05	8.59%
CEB Coal	266.72	53.20%
IPP Thermal	54.12	10.80%
SPP Wind	2.80	0.56%
CEB Wind	3.53	0.70%
SPP Solar	3.44	0.69%
SPP Solid Waste	3.07	0.61%
Mini Hydro	17.28	3.45%
Total	501.32	

For Current Year

Category	Dispatch (GWh)	Percentage
CEB Hydro	1,037.2	23.47%
CEB Thermal Oil	684.2	15.48%
CEB Coal	1,817.2	41.12%
IPP Thermal	647.0	14.64%
SPP Wind	45.2	1.02%
CEB Wind	57.3	1.30%
SPP Solar	27.1	0.61%
SPP Solid Waste	20.8	0.47%
Mini Hydro	83.7	1.89%
Total	4,419.4	

CEB owned Thermal Plant Dispatch

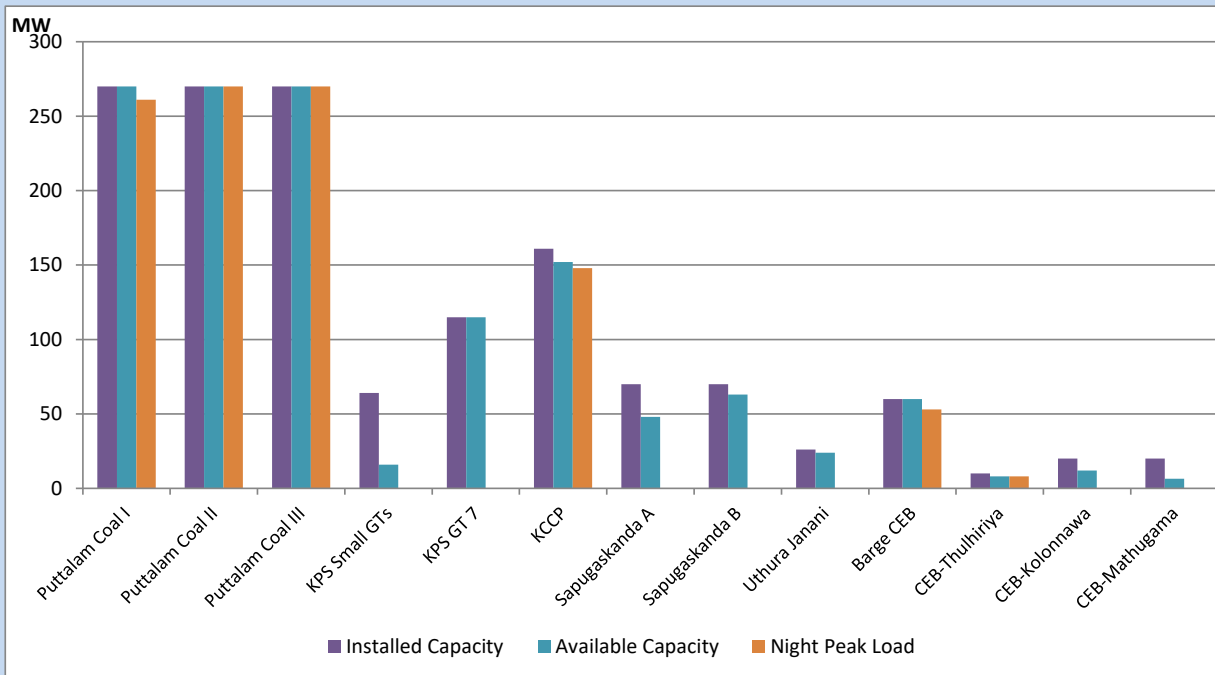
April 14, 2022



Available Generation is estimated based on plant availability at 6.00am on

April 15, 2022

CEB owned Thermal Plant Loading at the Night Peak



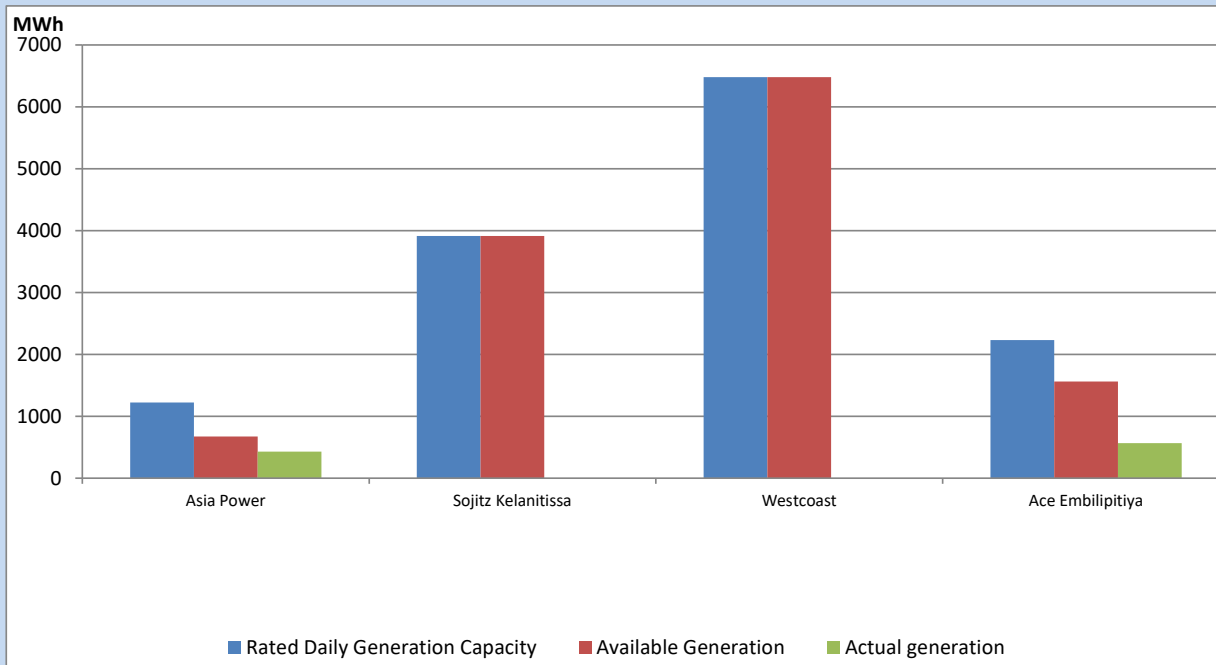
Note- Plant availability is recorded at 6.00 am on

April 15, 2022

IPP owned Thermal Plant Dispatch

April 14, 2022

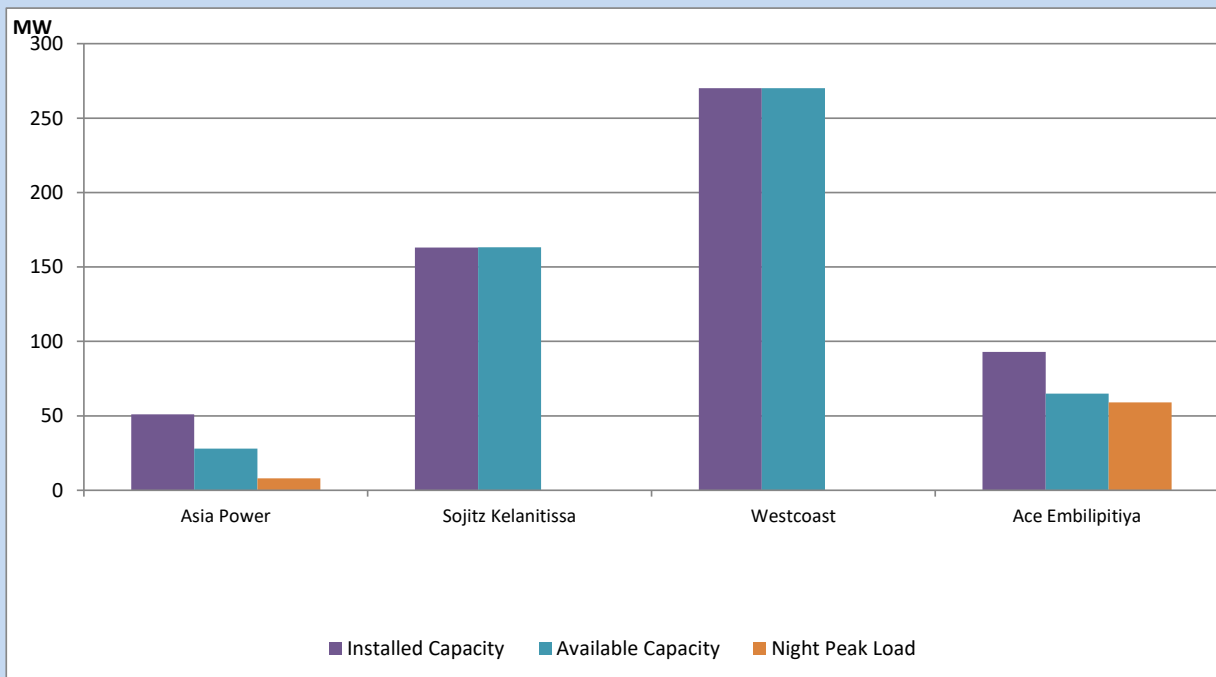
ACE Matara, V Power Pallekale, Vpower Galle, V Power Horana, Vpower Hambantota, Vpower Valachchena and Altaqa Mahiyanganaya are not available due to expiration of PPAs



Available Generation is estimated based on plant availability at 6.00am on

April 15, 2022

IPP owned Thermal Plant Loading at the Night Peak

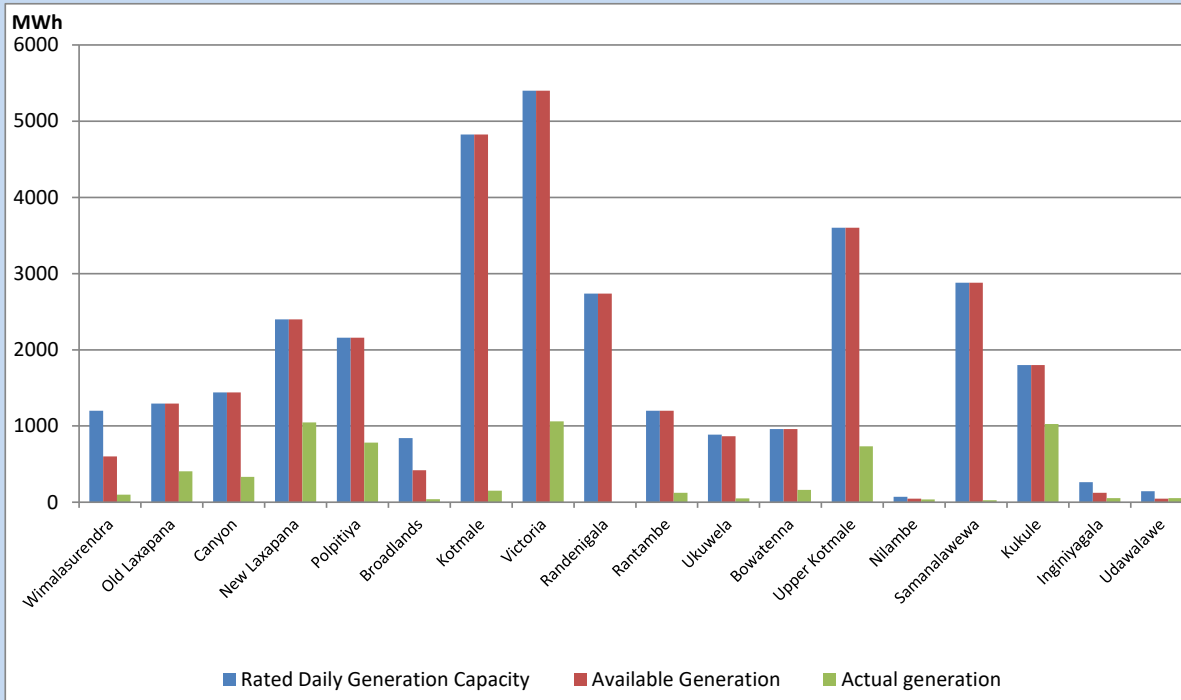


Note- Plant availability is recorded at 6.00 am on

April 15, 2022

Major Hydro Plant Dispatch

April 14, 2022

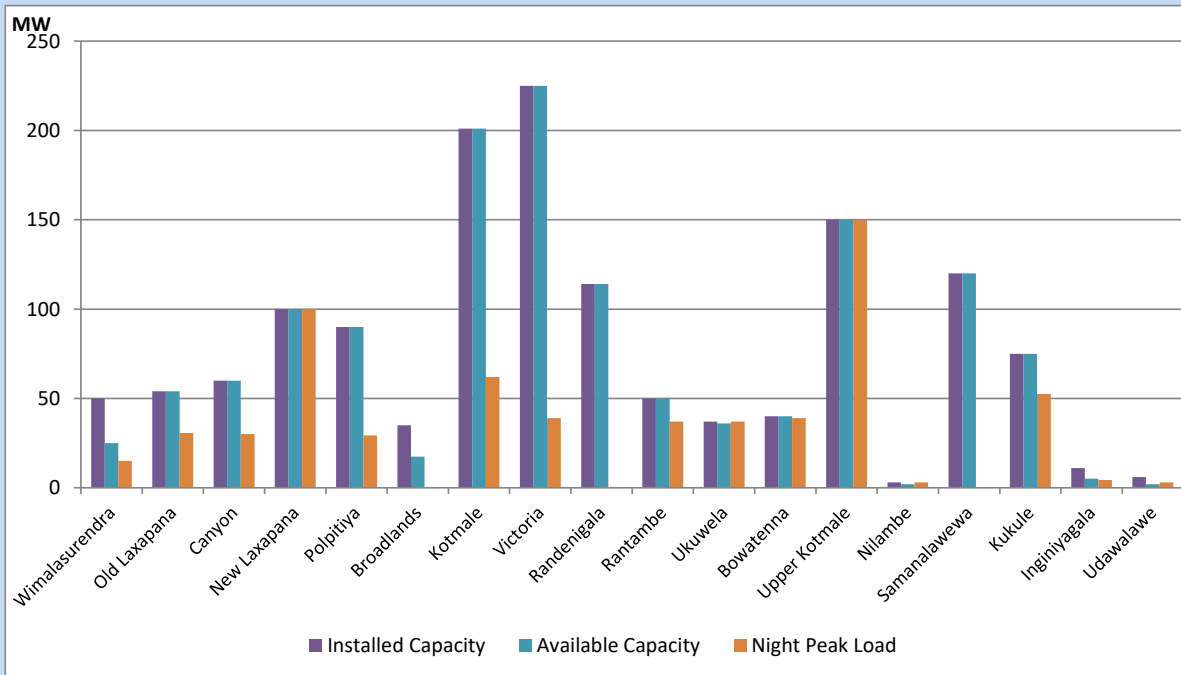


Available Generation is estimated based on plant availability at 6.00am on April 15, 2022
 Broadlands power plant is operating in the Commissioning Stage

April 15, 2022

Major Hydro Plant Loading at Night Peak

April 14, 2022



Note- Plant availability is recorded at 6.00 am on April 15, 2022
 Broadlands power plant is operating in the Commissioning Stage

Summary of Major Plant performance

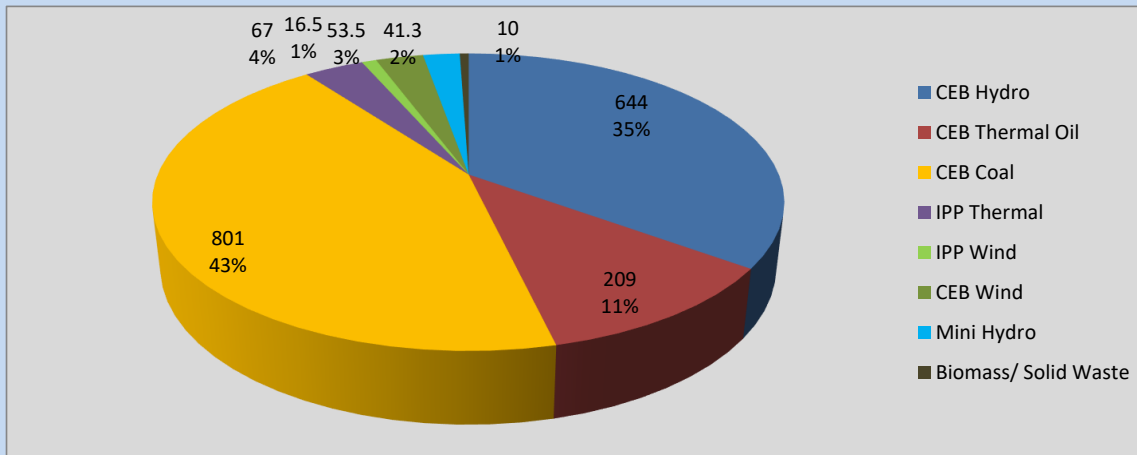
Plant	Installed Capacity	Plant Availability	Night peak Load	Plant Dispatch
	(MW)	(MW)	(MW)	(MWh)
Wimalasurendra	50	25	15	99
Old Laxapana	54	54	31	405
Canyon	60	60	30	333
New Laxapana	100	100	100	1,048
Polpitiya	90	90	29	781
Broadlands	35	18	0	38
Kotmale	201	201	62	150
Victoria	225	225	39	1,060
Randenigala	114	114	0	0
Rantambe	50	50	37	125
Ukuwela	37	36	37	51
Bowatenna	40	40	39	162
Upper Kotmale	150	150	150	734
Nilambe	3	2	3	35
Samanalawewa	120	120	0	26
Kukule	75	75	53	1,026
Inginiyagala	11	5	4	53
Udawalawe	6	2	3	53
Puttalam Coal I	270	270	261	5,220
Puttalam Coal II	270	270	270	5,046
Puttalam Coal III	270	270	270	5,093
KPS Small GTs	64	16	0	0
KPS GT 7	115	115	0	0
KCCP	161	152	148	3,372
Sapugaskanda A	70	48	0	0
Sapugaskanda B	70	63	0	0
Uthura Janani	26	24	0	0
Barge CEB	60	60	53	307
CEB-Thulhiriya	10	8	8	44
CEB-Kolonnawa	20	12	0	0
CEB-Mathugama	20	6	0	0
Asia Power	51	28	8	430
Sojitz Kelanitissa	163	163	0	0
West Coast	270	270	0	0
ACE Embilipitiya	93	65	59	566
Total	3,424	3,207	1,830	29,475

Plant availability is the availability recorded at 6 am on

April 15, 2022

Contribution to the Night Peak in MW

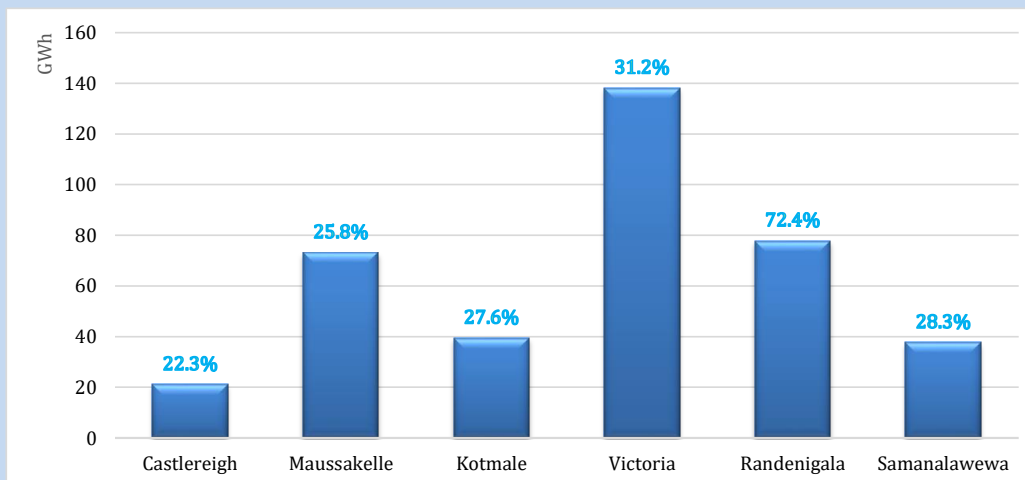
April 14, 2022



Night Peak*	1,842.1 MW
Day Peak	1,135.3 MW
Minimum Demand	980.6 MW

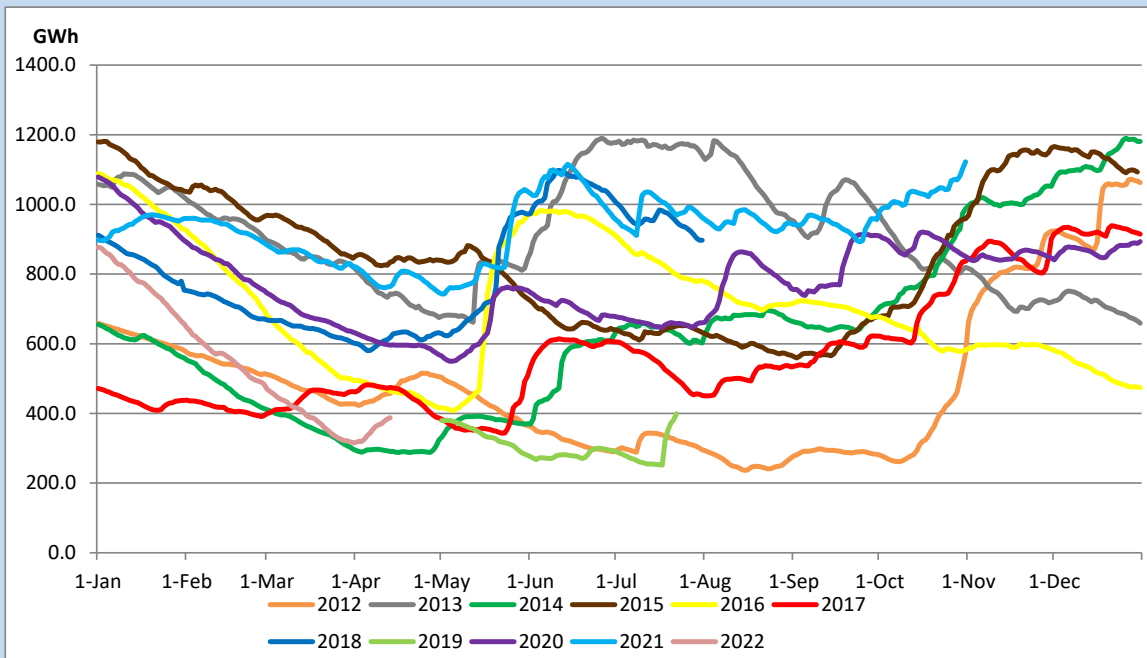
Above figures are excluding contribution from Roof Top Solar, 1MW solar, certain Wind plants and Mini Hydro plants

Reservoir Levels - as at 06.00 Hr on April 15, 2022



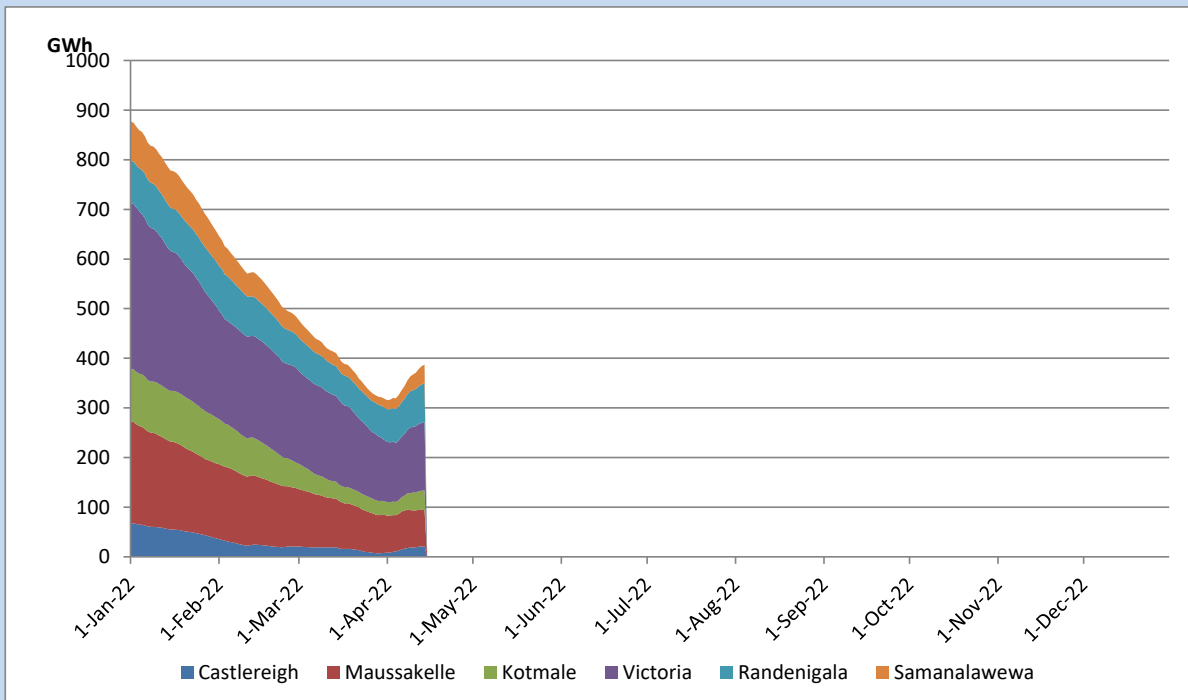
Total Reservoir Level	387.6 GWh
% of Total capacity	34.6%

Comparison of Total Reservoir Storage Levels with Past Years

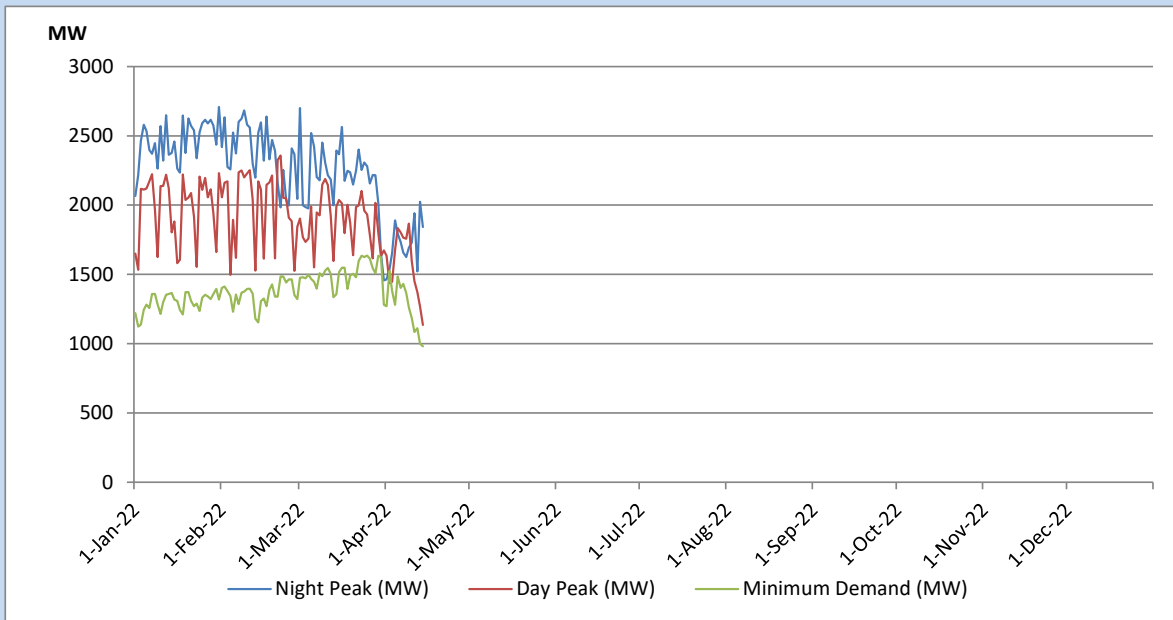


Data for 2018 and 2019 are only available for part of year.

Variation of Major Hydro Reservoir Levels in the current year (GWh)



Variation of Demand during the current year

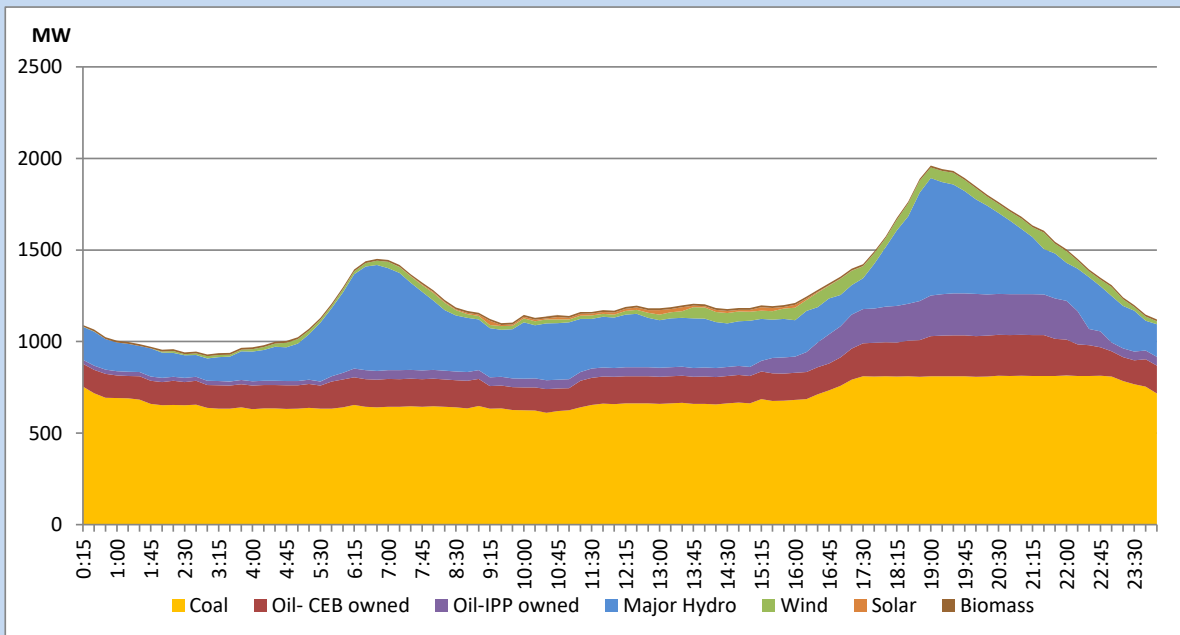


The above figures are excluding contribution from Roof Top Solar, 1MW solar, certain Wind plants and Mini Hydro plants

Daily Load Curve of the Previous day

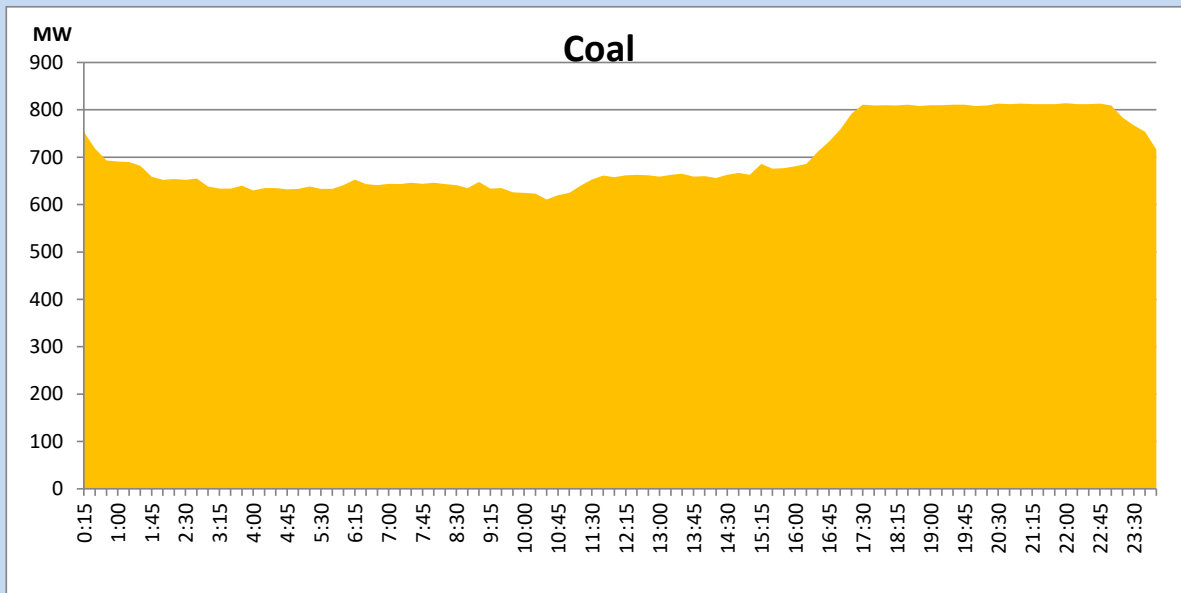
April 13, 2022

Solar and wind data is based on Telemetered Power Stations only



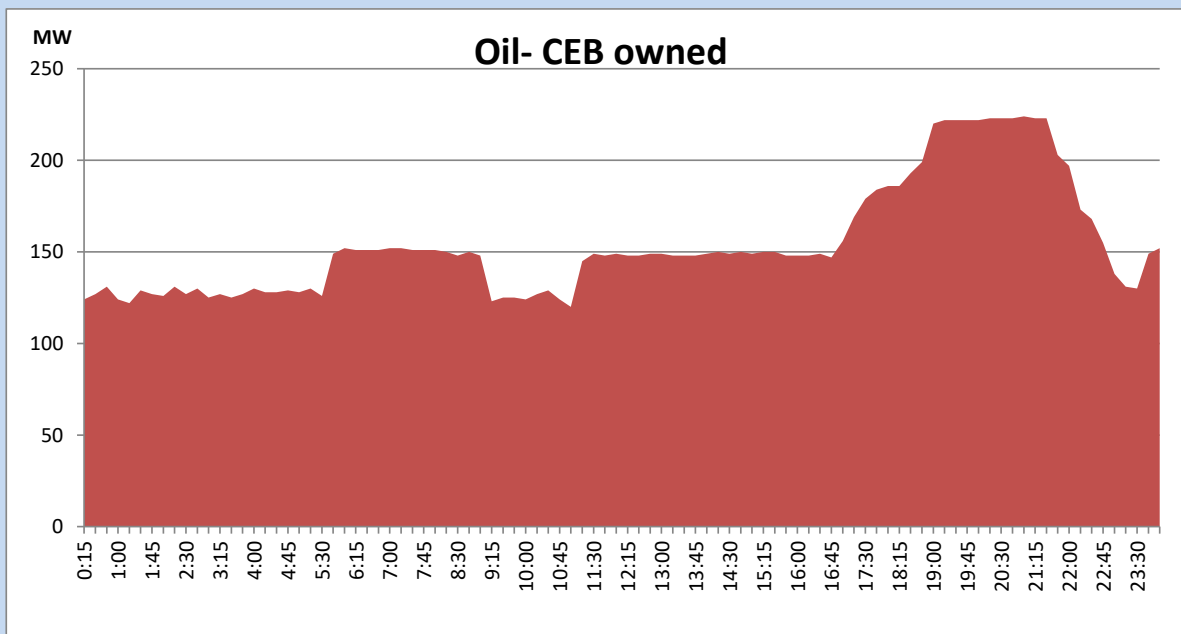
Coal Generation during the Previous day

April 13, 2022



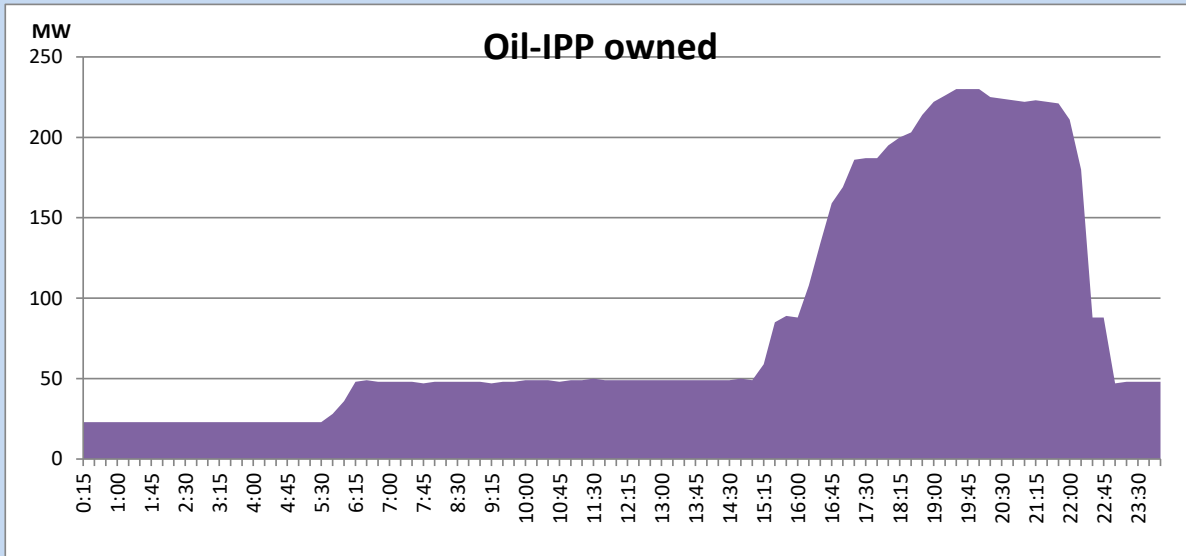
CEB Oil Plant Generation during the Previous day

April 13, 2022



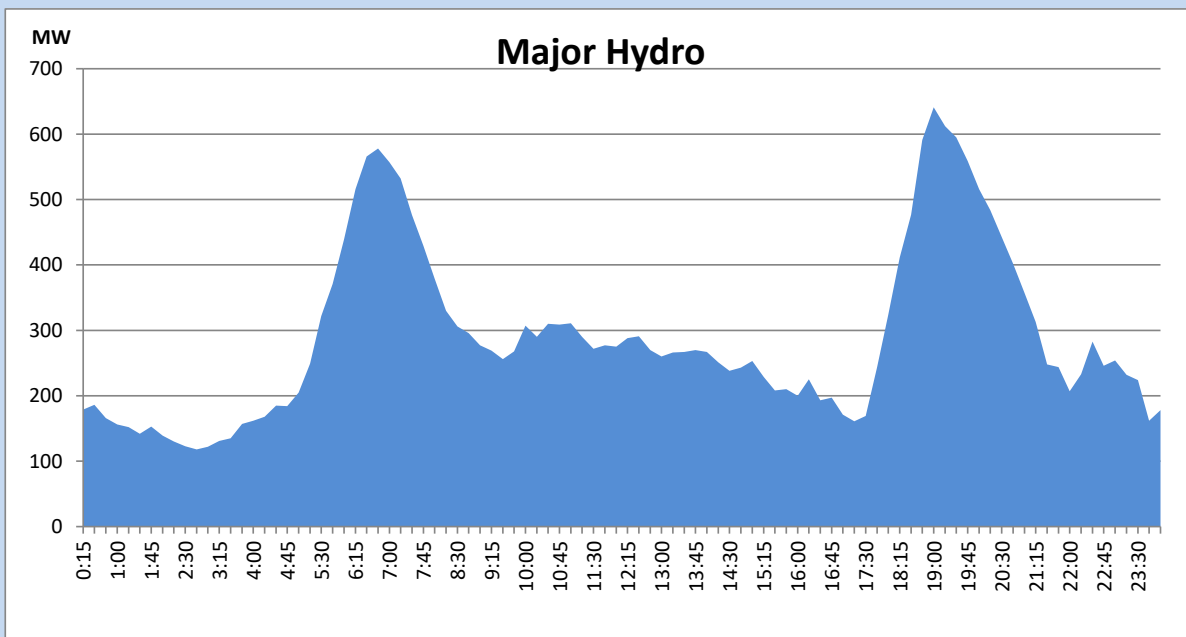
IPP Oil Plant Generation during the Previous day

April 13, 2022



Major Hydro Generation during the Previous day

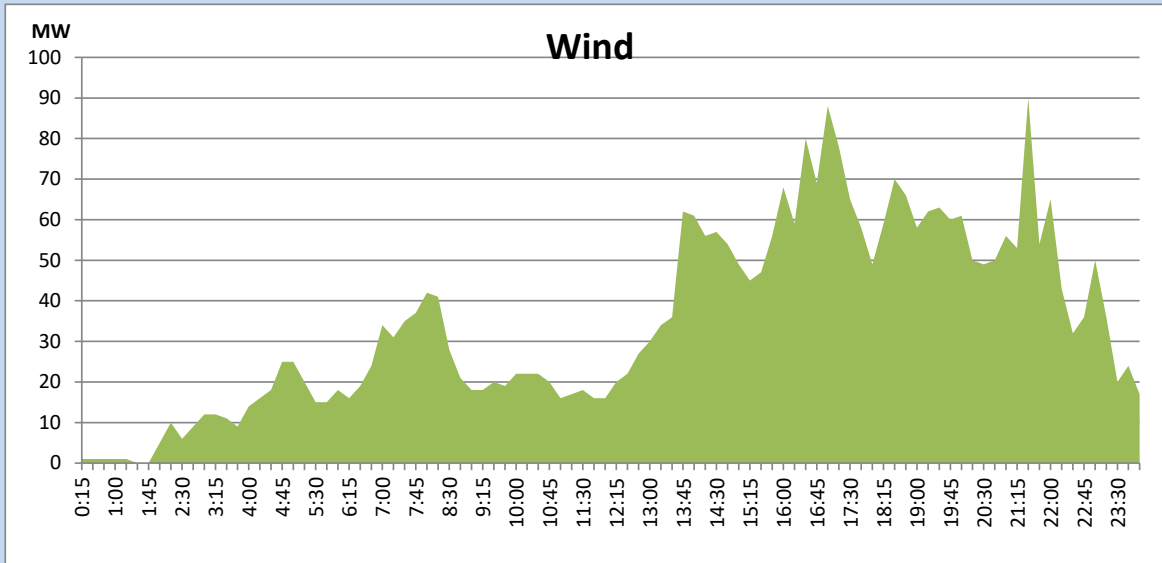
April 13, 2022



Wind Generation during the Previous day

April 13, 2022

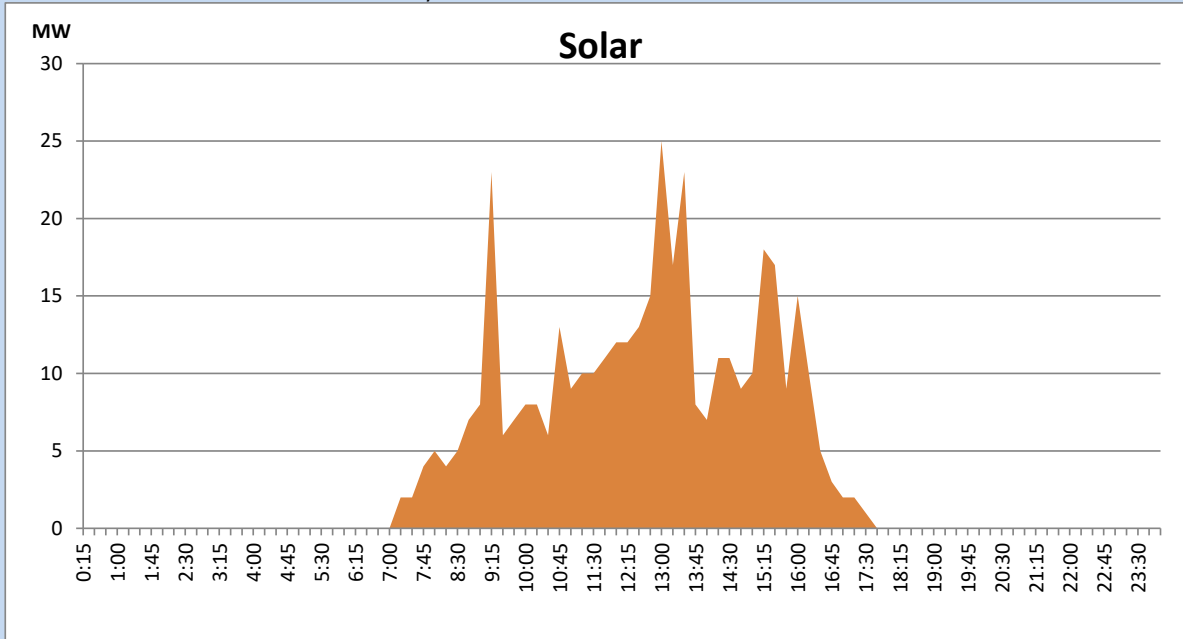
Based on Telemetered Power Stations only



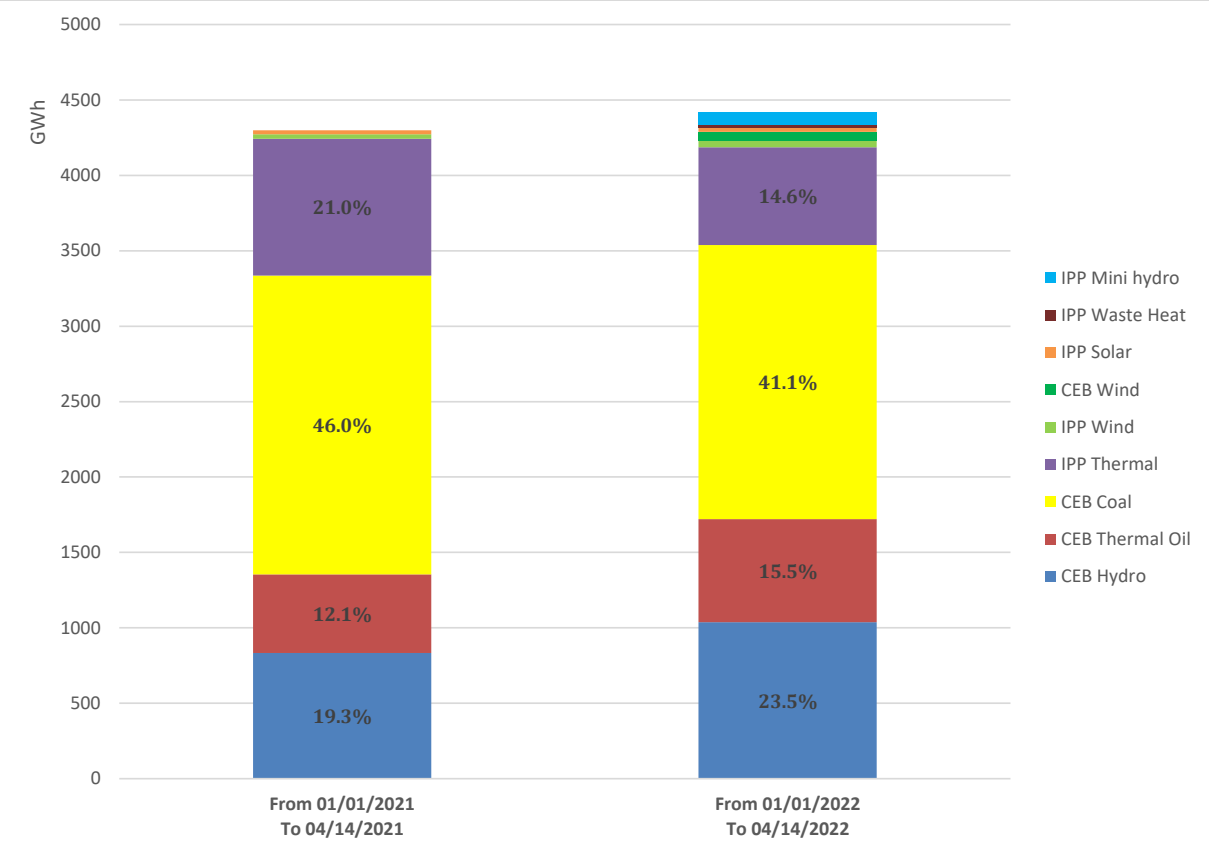
Solar Generation during the Previous day

April 13, 2022

Based on Telemetered Power Stations only



Cumulative Dispatch Comparison with Last Year



Thermal Plant Fuel types

Power Station	Primary Fuel
CEB Thermal	
Sapugaskanda 1	Heavy Fuel
Sapugaskanda 2	Heavy Fuel
Kelanitissa Small Gas Turbines	Auto Diesel
GT 7 - Kelanitissa	Auto Diesel
Kelanitissa CCY	Naphtha & Diesel
Lakvijaya 1	Coal
Lakvijaya 2	Coal
Lakvijaya 3	Coal
Uthuru Janani	Heavy Fuel
Barge CEB	Heavy Fuel

Power Station	Primary Fuel
Private Thermal	
Sojitz - Kelanitissa	Auto Diesel
West Coast	Heavy Fuel

Major Incidents during the day -as reported by CEB morning of

1) Nil.

April 15, 2022