

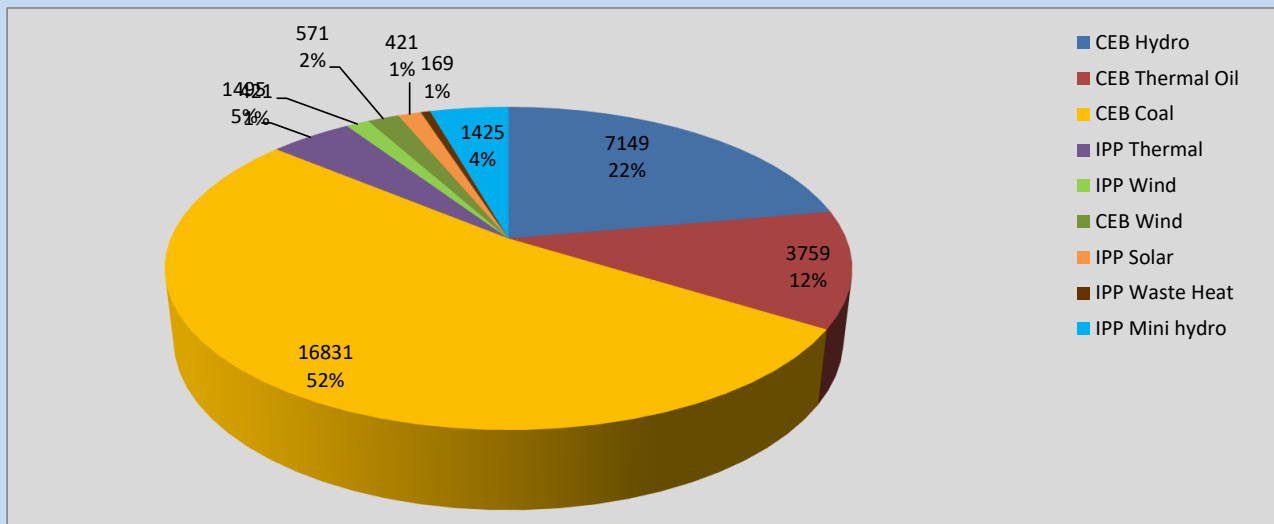
Generation and Reservoirs Statistics

April 13, 2022



PUBLIC UTILITIES COMMISSION OF SRI LANKA

Daily Generation Mix in MWh



Total Generation **32,053 MWh**

Note: Above data is excluding contribution from Roof Top Solar, 1MW Solar and certain Mini Hydro plants

Cumulative Dispatch

Note: Following data is Excluding contribution from Roof Top Solar, 1MW solar and Mini Hydro plants

For Current Month

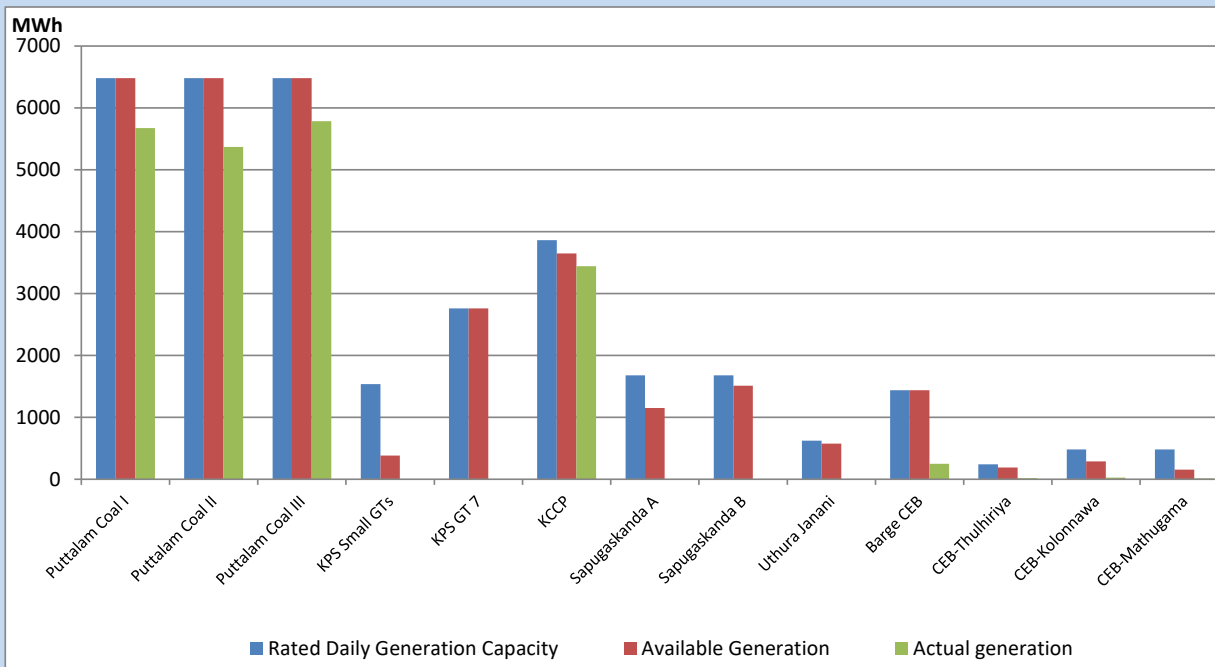
Category	Dispatch (GWh)	Percentage
CEB Hydro	101.13	21.43%
CEB Thermal Oil	39.33	8.34%
CEB Coal	251.36	53.27%
IPP Thermal	53.12	11.26%
SPP Wind	2.27	0.48%
CEB Wind	2.60	0.55%
SPP Solar	3.14	0.67%
SPP Solid Waste	2.95	0.63%
Mini Hydro	15.95	3.38%
Total	471.85	

For Current Year

Category	Dispatch (GWh)	Percentage
CEB Hydro	1,031.0	23.49%
CEB Thermal Oil	680.5	15.50%
CEB Coal	1,801.8	41.04%
IPP Thermal	646.0	14.72%
SPP Wind	44.7	1.02%
CEB Wind	56.4	1.28%
SPP Solar	26.8	0.61%
SPP Solid Waste	20.7	0.47%
Mini Hydro	82.4	1.88%
Total	4,390.0	

CEB owned Thermal Plant Dispatch

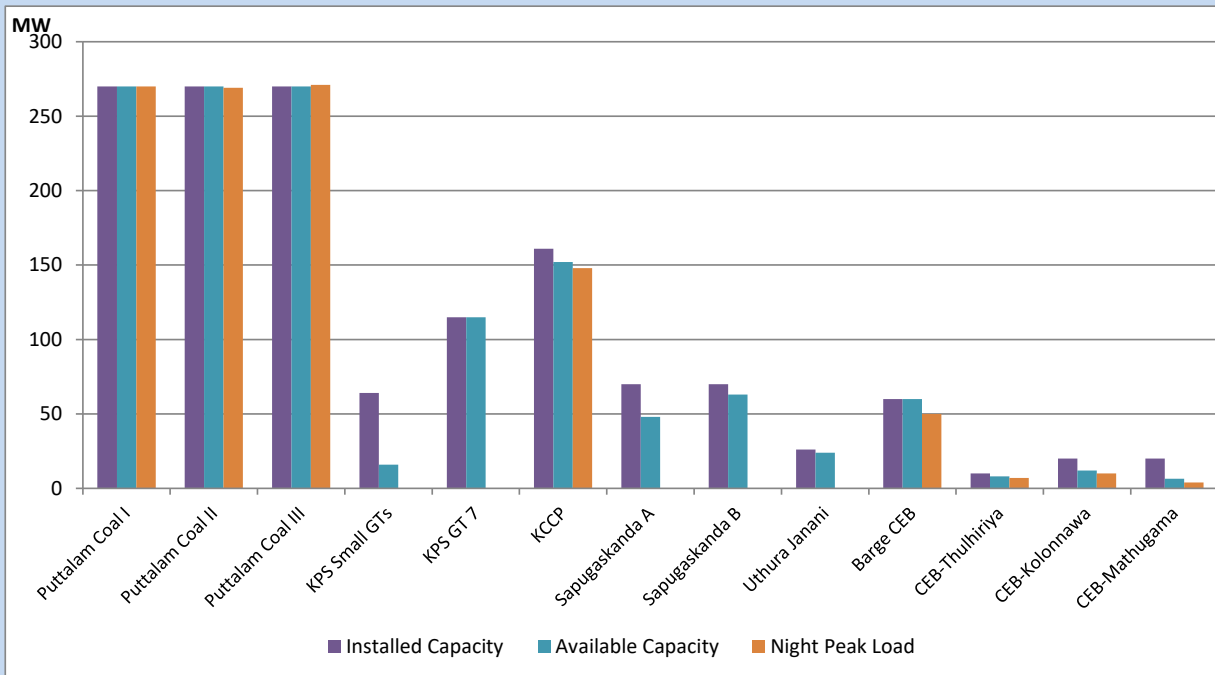
April 13, 2022



Available Generation is estimated based on plant availability at 6.00am on

April 14, 2022

CEB owned Thermal Plant Loading at the Night Peak



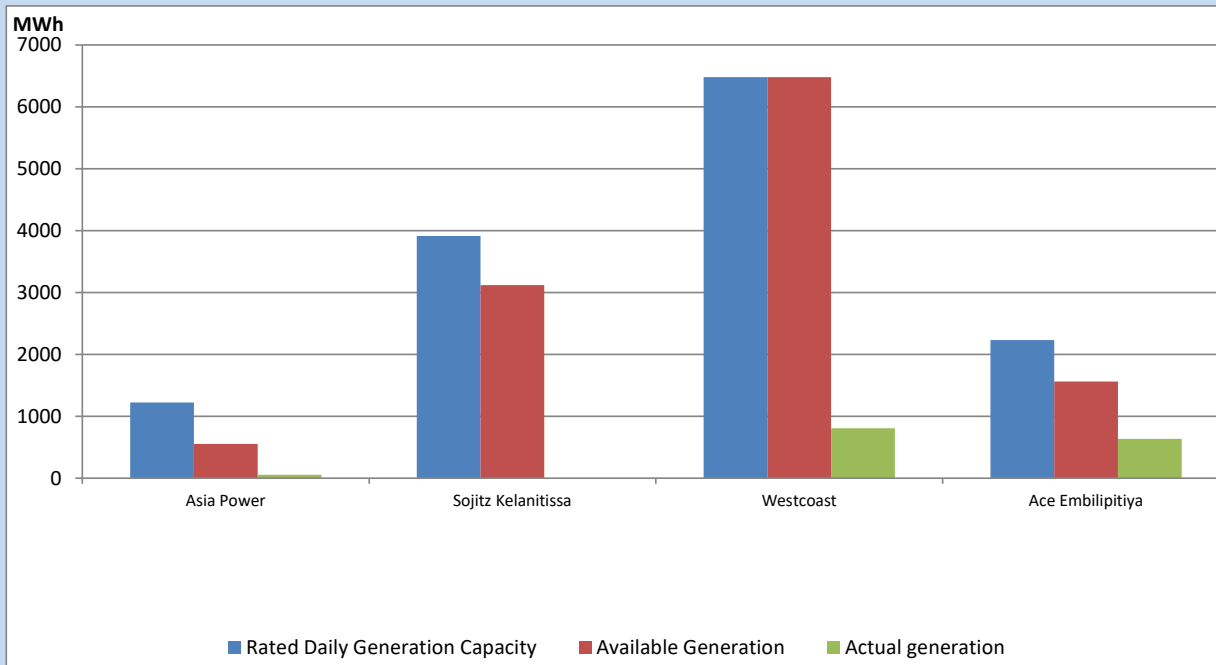
Note- Plant availability is recorded at 6.00 am on

April 14, 2022

IPP owned Thermal Plant Dispatch

April 13, 2022

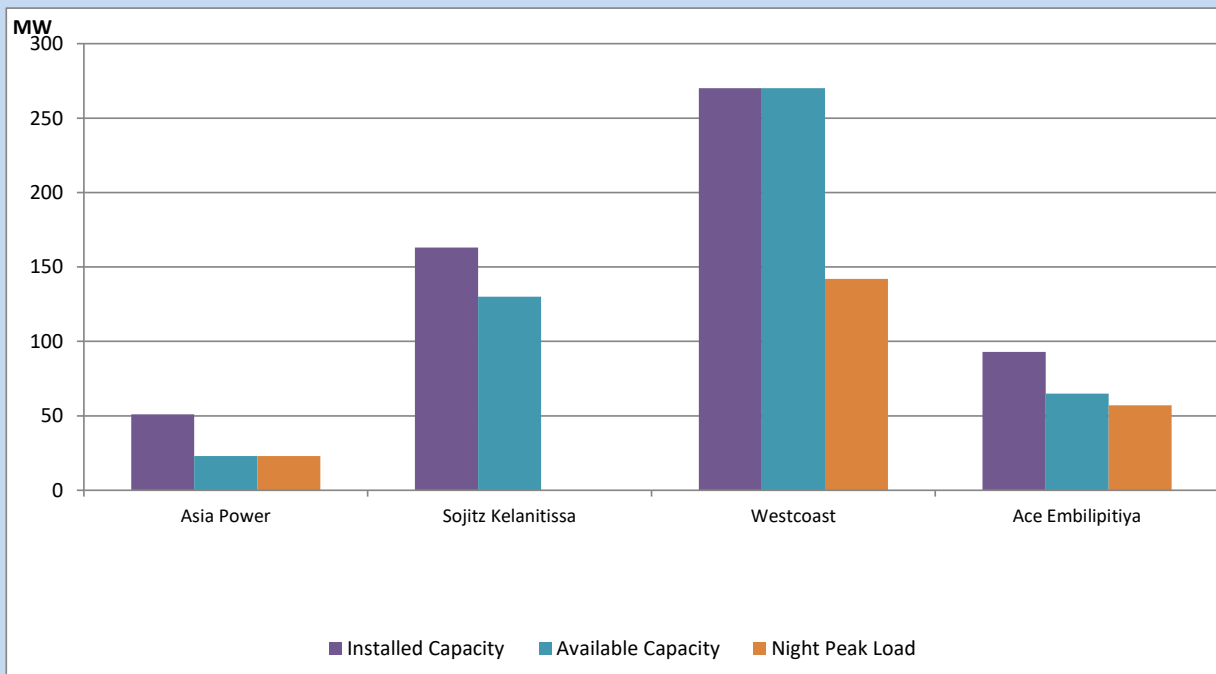
ACE Matara, Asia Power, V Power Pallekale, Vpower Galle, V Power Horana, Vpower Hambantota, Vpower Valachchena and Altaqa Mahiyanganaya are not available due to expiration of PPAs



Available Generation is estimated based on plant availability at 6.00am on

April 14, 2022

IPP owned Thermal Plant Loading at the Night Peak

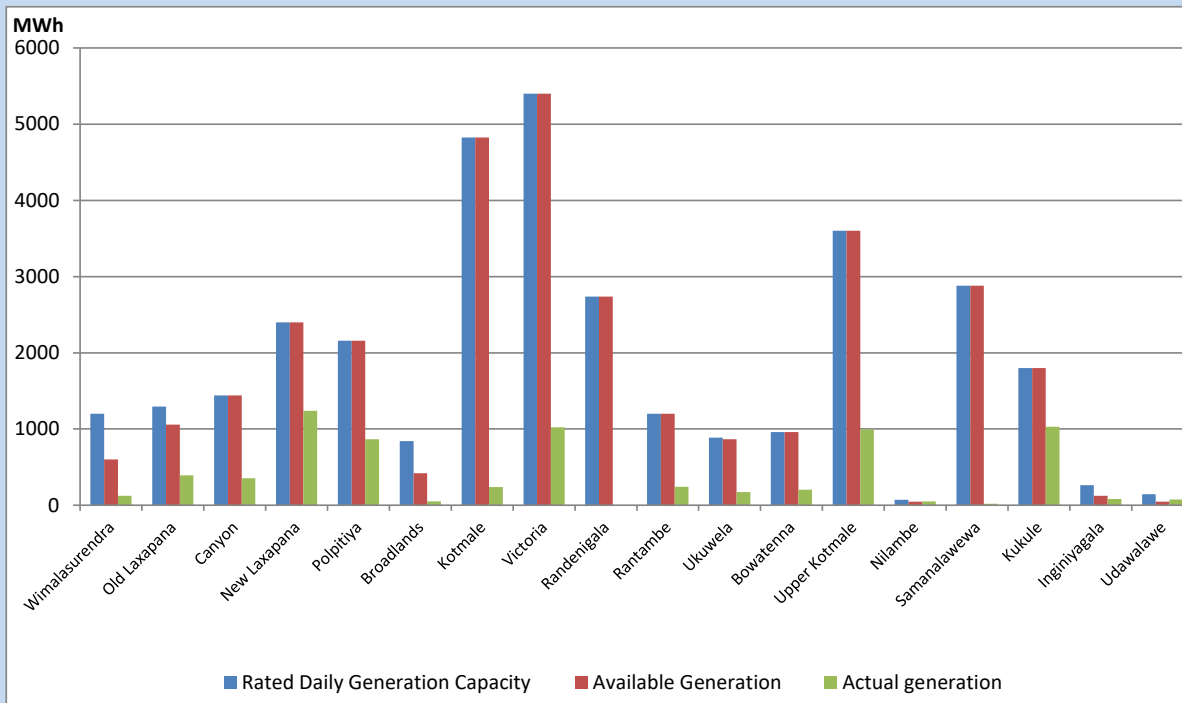


Note- Plant availability is recorded at 6.00 am on

April 14, 2022

Major Hydro Plant Dispatch

April 13, 2022

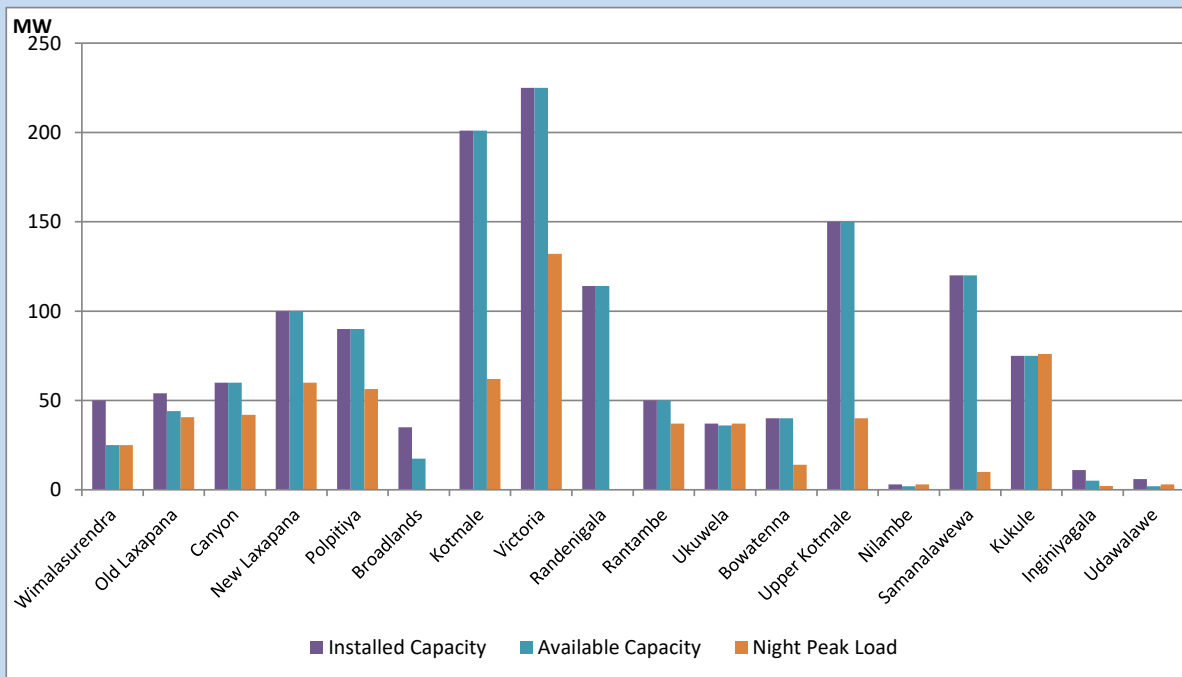


Available Generation is estimated based on plant availability at 6.00am on
Broadlands power plant is operating in the Commissioning Stage

April 14, 2022

Major Hydro Plant Loading at Night Peak

April 13, 2022



Note- Plant availability is recorded at 6.00 am on
Broadlands power plant is operating in the Commissioning Stage

April 14, 2022

Summary of Major Plant performance

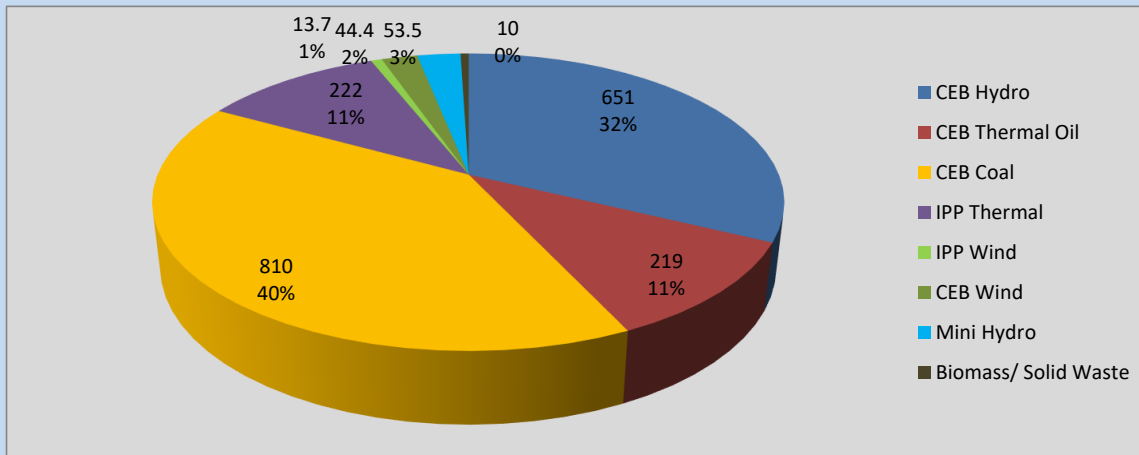
Plant	Installed Capacity	Plant Availability	Night peak Load	Plant Dispatch
	(MW)	(MW)	(MW)	(MWh)
Wimalasurendra	50	25	25	123
Old Laxapana	54	44	41	392
Canyon	60	60	42	355
New Laxapana	100	100	60	1,238
Polpitiya	90	90	56	865
Broadlands	35	18	0	51
Kotmale	201	201	62	240
Victoria	225	225	132	1,022
Randenigala	114	114	0	0
Rantambe	50	50	37	242
Ukuwela	37	36	37	171
Bowatenna	40	40	14	205
Upper Kotmale	150	150	40	993
Nilambe	3	2	3	51
Samanalawewa	120	120	10	19
Kukule	75	75	76	1,029
Inginiyagala	11	5	2	80
Udawalawe	6	2	3	73
Puttalam Coal I	270	270	270	5,676
Puttalam Coal II	270	270	269	5,369
Puttalam Coal III	270	270	271	5,786
KPS Small GTs	64	16	0	0
KPS GT 7	115	115	0	0
KCCP	161	152	148	3,442
Sapugaskanda A	70	48	0	0
Sapugaskanda B	70	63	0	0
Uthura Janani	26	24	0	0
Barge CEB	60	60	50	252
CEB-Thulhiriya	10	8	7	20
CEB-Kolonnawa	20	12	10	29
CEB-Mathugama	20	6	4	16
Asia Power	51	23	23	56
Sojitz Kelanitissa	163	130	0	0
West Coast	270	270	142	805
ACE Embilipitiya	93	65	57	634
Total	3,424	3,159	2,013	32,053

Plant availability is the availability recorded at 6 am on

April 14, 2022

Contribution to the Night Peak in MW

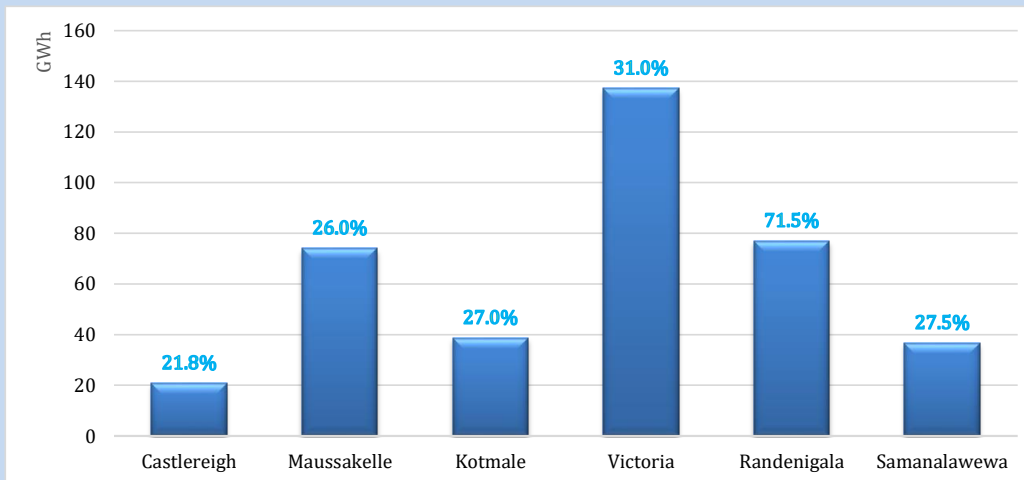
April 13, 2022



Night Peak* 2,023.7 MW
 Day Peak 1,269.2 MW
 Minimum Demand 999.9 MW

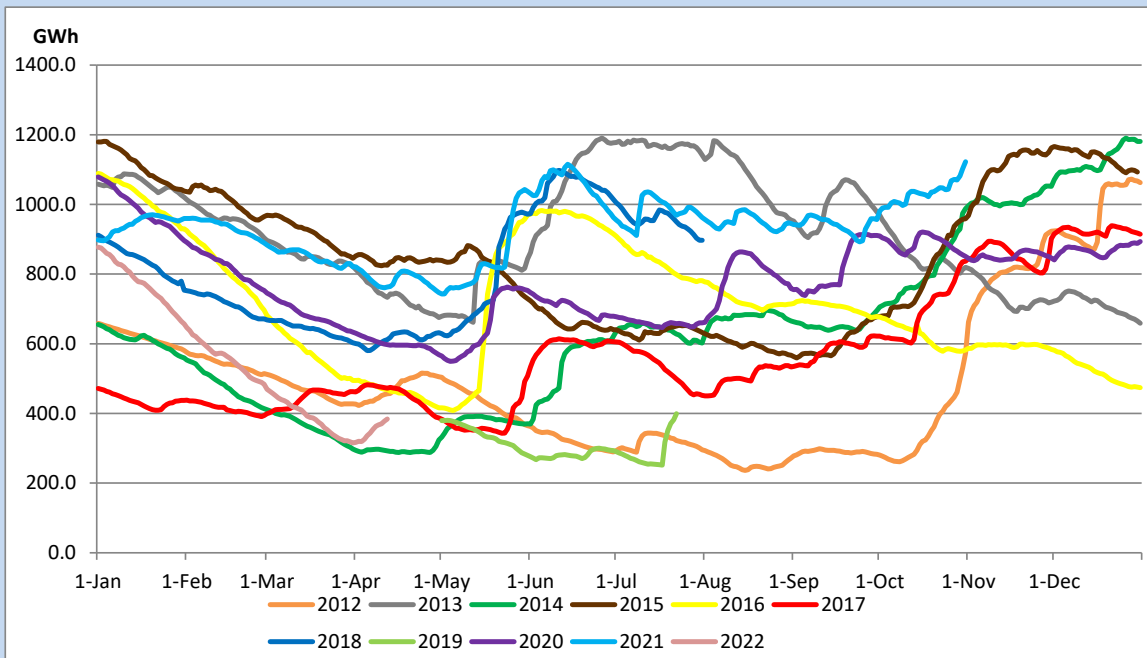
Above figures are excluding contribution from Roof Top Solar, 1MW solar, certain Wind plants and Mini Hydro plants

Reservoir Levels - as at 06.00 Hr on April 14, 2022



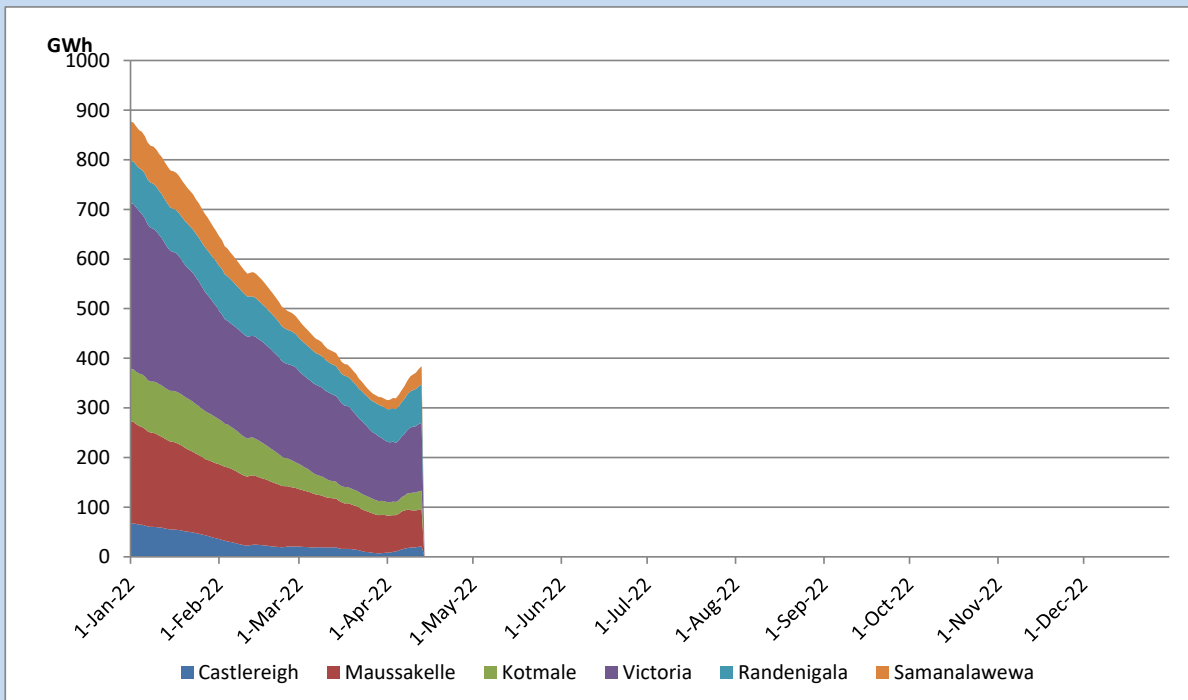
Total Reservoir Level 383.9 GWh
 % of Total capacity 34.1%

Comparison of Total Reservoir Storage Levels with Past Years

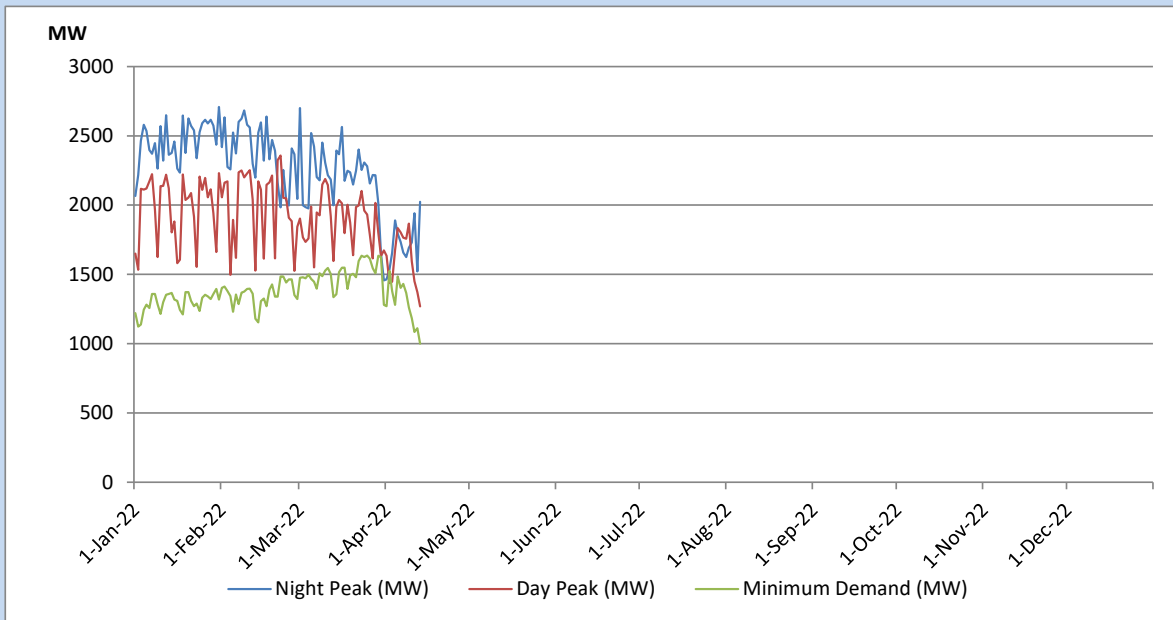


Data for 2018 and 2019 are only available for part of year.

Variation of Major Hydro Reservoir Levels in the current year (GWh)



Variation of Demand during the current year

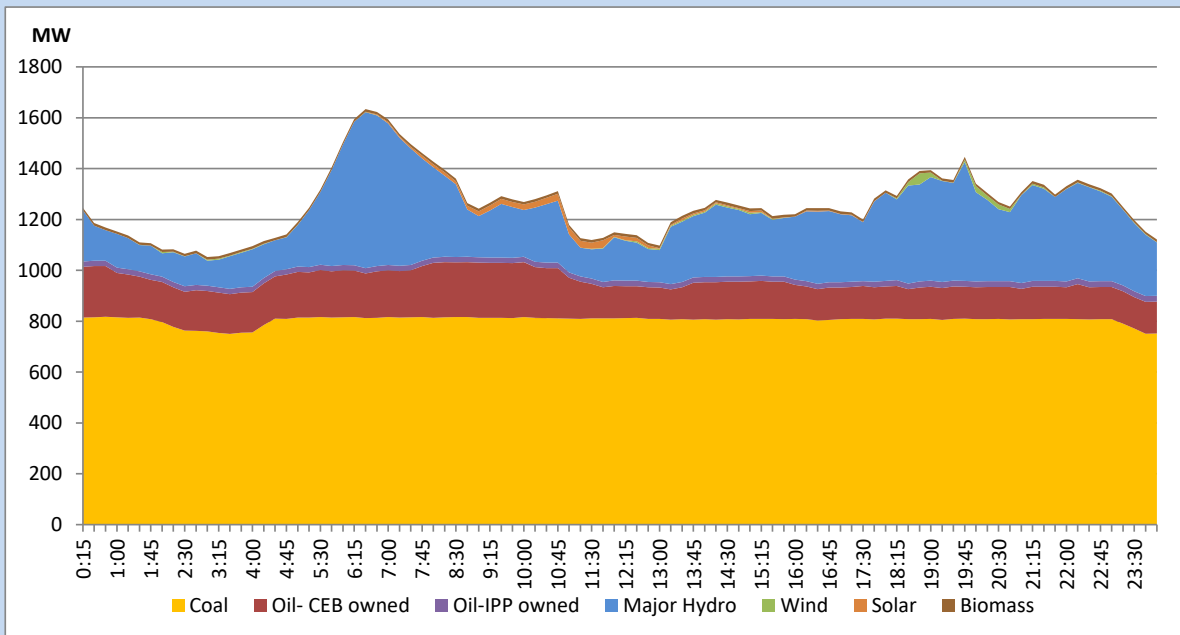


The above figures are excluding contribution from Roof Top Solar, 1MW solar, certain Wind plants and Mini Hydro plants

Daily Load Curve of the Previous day

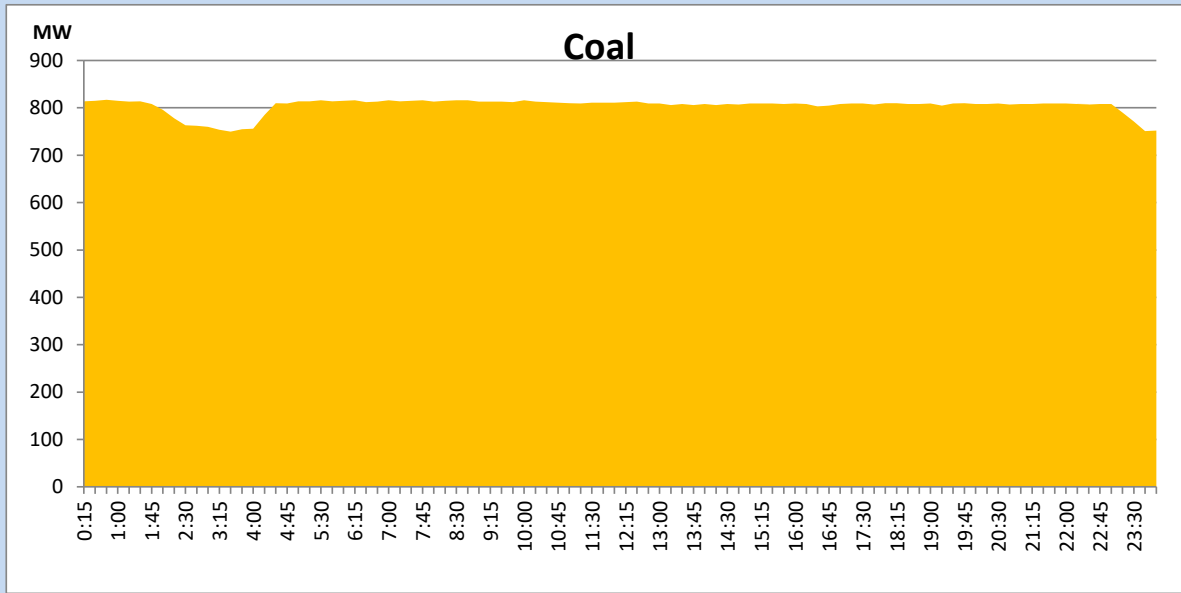
April 12, 2022

Solar and wind data is based on Telemetered Power Stations only



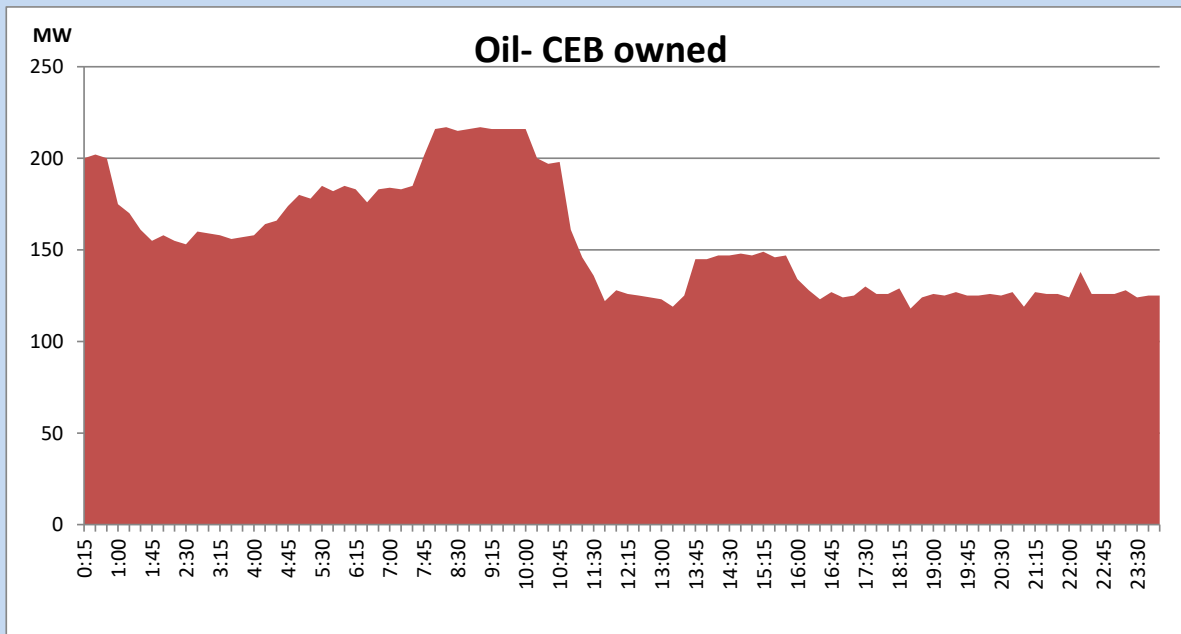
Coal Generation during the Previous day

April 12, 2022



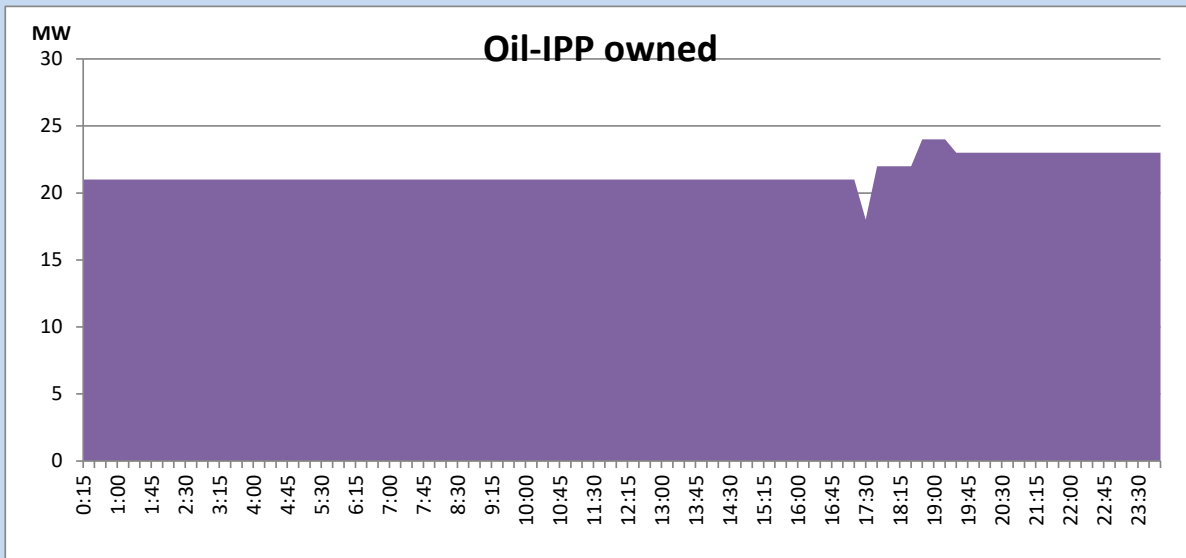
CEB Oil Plant Generation during the Previous day

April 12, 2022



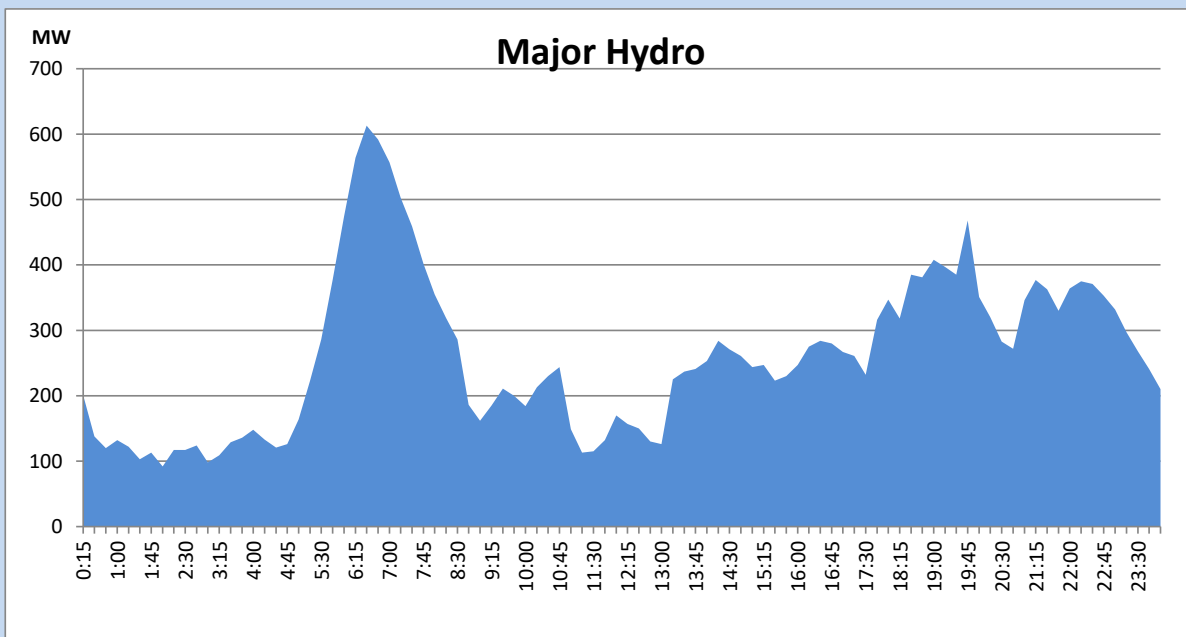
IPP Oil Plant Generation during the Previous day

April 12, 2022



Major Hydro Generation during the Previous day

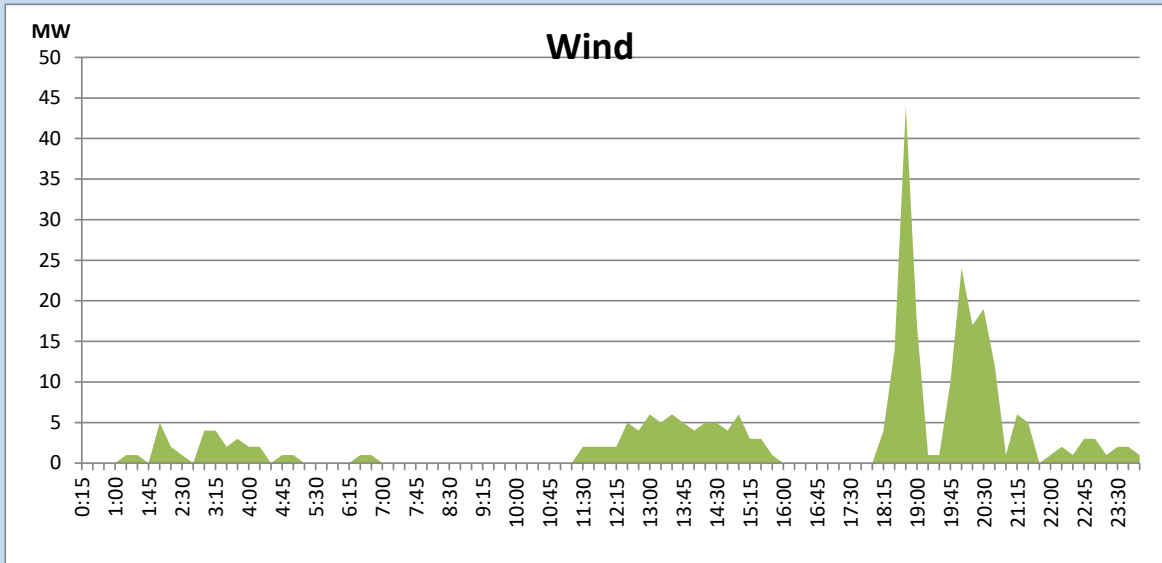
April 12, 2022



Wind Generation during the Previous day

April 12, 2022

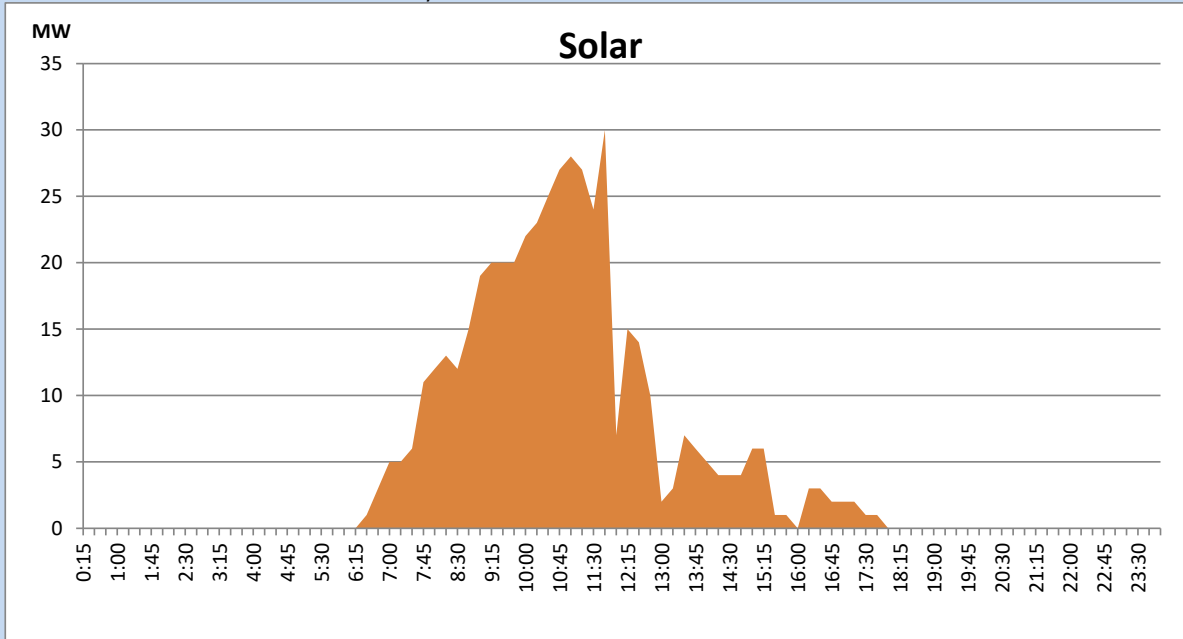
Based on Telemetered Power Stations only



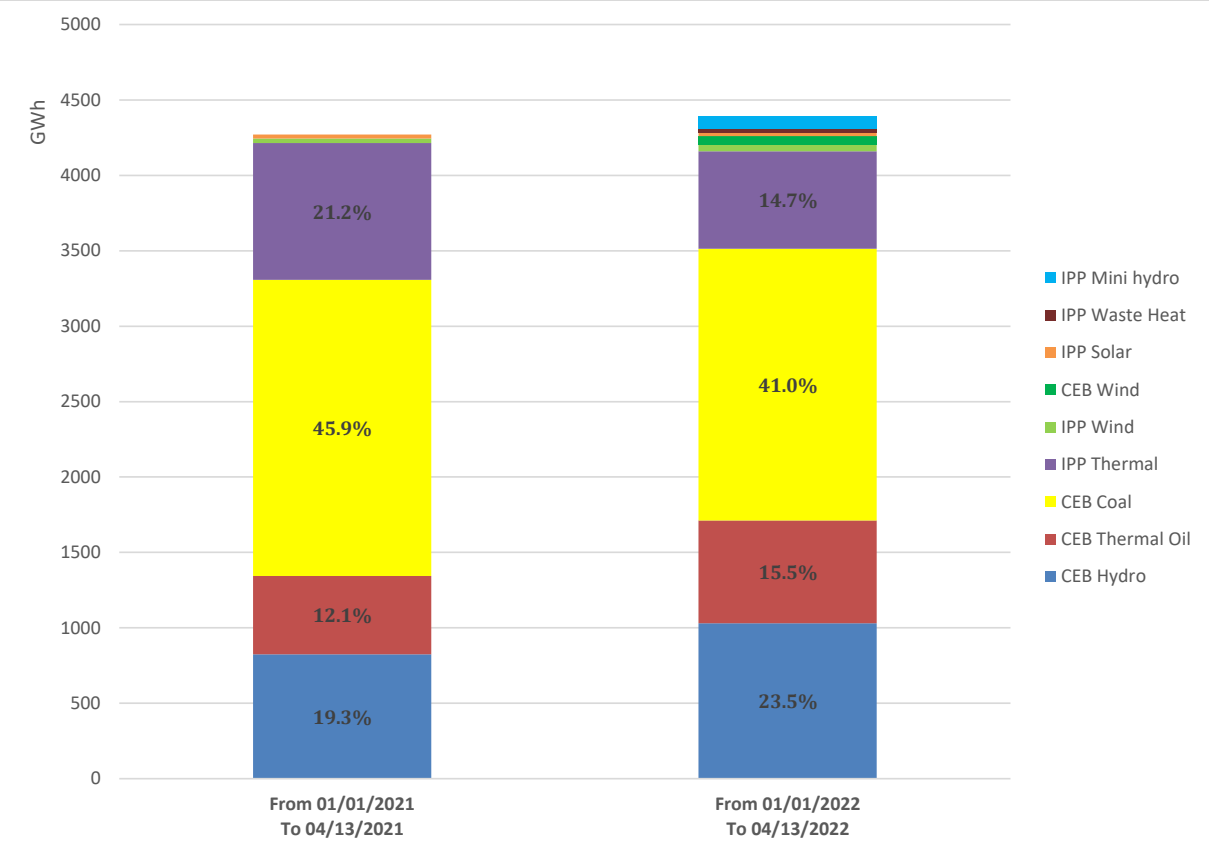
Solar Generation during the Previous day

April 12, 2022

Based on Telemetered Power Stations only



Cumulative Dispatch Comparison with Last Year



Thermal Plant Fuel types

Power Station	Primary Fuel
CEB Thermal	
Sapugaskanda 1	Heavy Fuel
Sapugaskanda 2	Heavy Fuel
Kelanitissa Small Gas Turbines	Auto Diesel
GT 7 - Kelanitissa	Auto Diesel
Kelanitissa CCY	Naphtha & Diesel
Lakvijaya 1	Coal
Lakvijaya 2	Coal
Lakvijaya 3	Coal
Uthuru Janani	Heavy Fuel
Barge CEB	Heavy Fuel

Power Station	Primary Fuel
Private Thermal	
Sojitz - Kelanitissa	Auto Diesel
West Coast	Heavy Fuel

Major Incidents during the day -as reported by CEB morning of

April 14, 2022

1) Kesbewa 132/33kV T/F 01 tripped at 11:46hrs due to the operation of ETF Buchholz protection causing 33kV side of the GSS to be dead.

The T/F and all affected 33kV feeders are yet to be restored.