

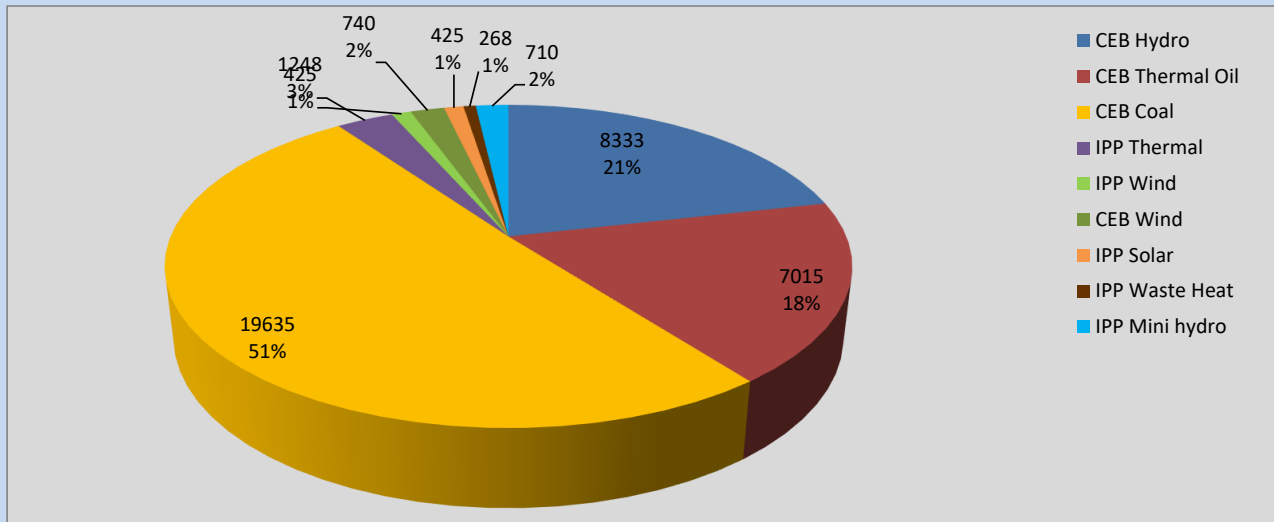
Generation and Reservoirs Statistics

March 13, 2022



PUBLIC UTILITIES COMMISSION OF SRI LANKA

Daily Generation Mix in MWh



Total Generation **38,676 MWh**

Note: Above data is excluding contribution from Roof Top Solar, 1MW Solar and certain Mini Hydro plants

Cumulative Dispatch

Note: Following data is Excluding contribution from Roof Top Solar, 1MW solar and Mini Hydro plants

For Current Month

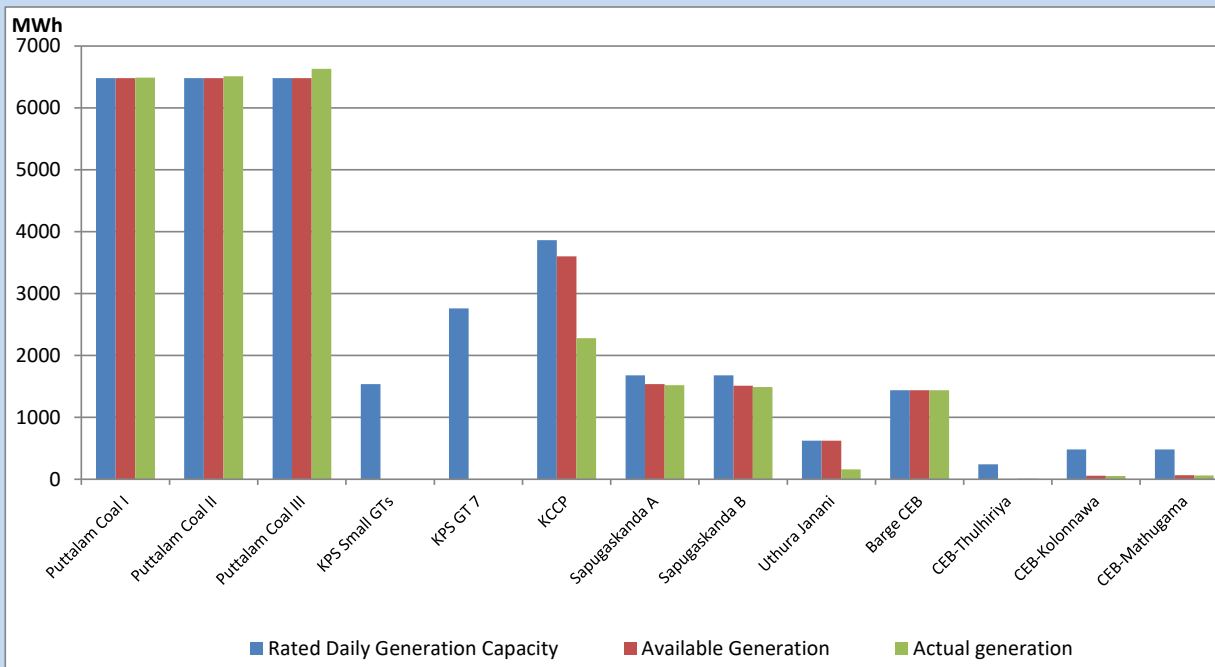
Category	Dispatch (GWh)	Percentage
CEB Hydro	106.75	18.82%
CEB Thermal Oil	87.21	15.38%
CEB Coal	254.75	44.91%
IPP Thermal	88.29	15.57%
SPP Wind	6.78	1.20%
CEB Wind	9.91	1.75%
SPP Solar	3.27	0.58%
SPP Solid Waste	2.83	0.50%
Mini Hydro	7.41	1.31%
Total	567.20	

For Current Year

Category	Dispatch (GWh)	Percentage
CEB Hydro	784.6	25.06%
CEB Thermal Oil	499.4	15.95%
CEB Coal	1,198.3	38.28%
IPP Thermal	479.7	15.32%
SPP Wind	34.9	1.11%
CEB Wind	44.2	1.41%
SPP Solar	18.6	0.59%
SPP Solid Waste	13.9	0.44%
Mini Hydro	57.1	1.82%
Total	3,130.4	

CEB owned Thermal Plant Dispatch

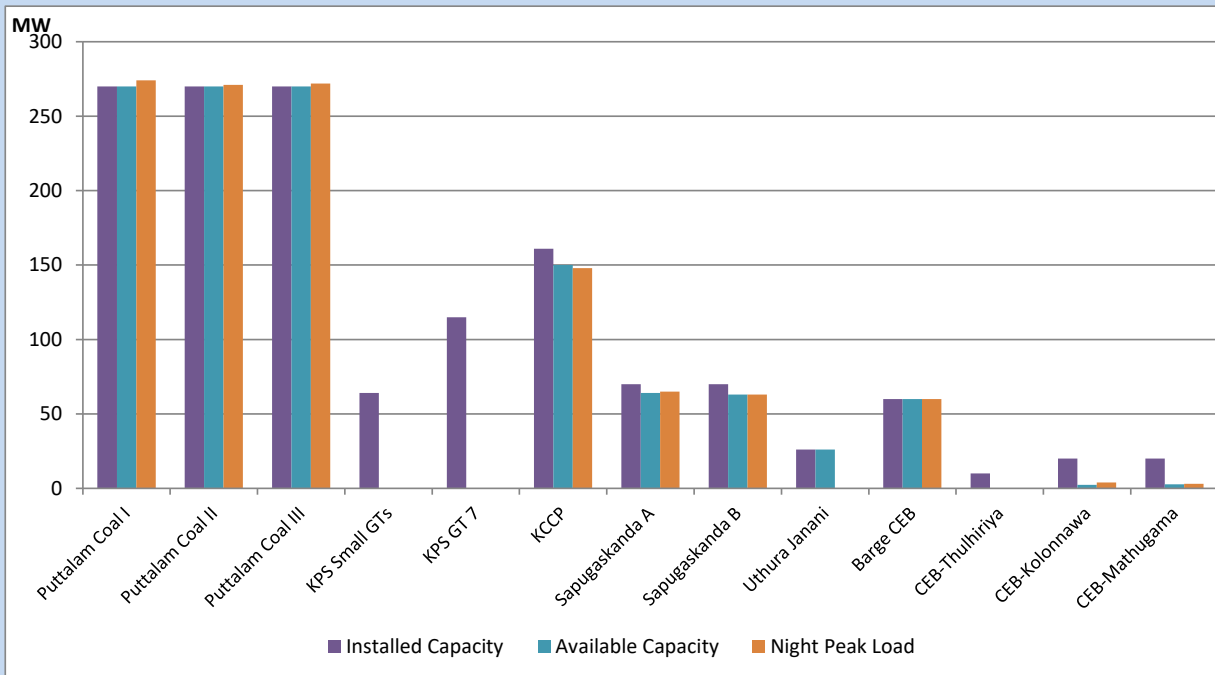
March 13, 2022



Available Generation is estimated based on plant availability at 6.00am on

March 14, 2022

CEB owned Thermal Plant Loading at the Night Peak



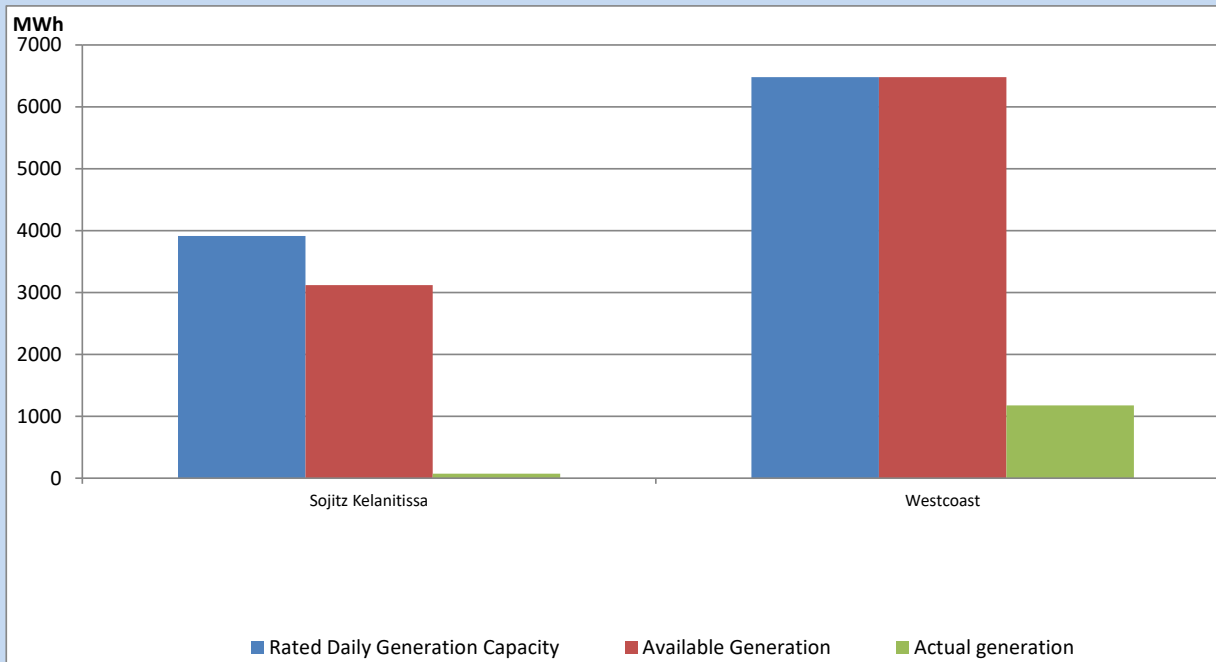
Note- Plant availability is recorded at 6.00 am on

March 14, 2022

IPP owned Thermal Plant Dispatch

March 13, 2022

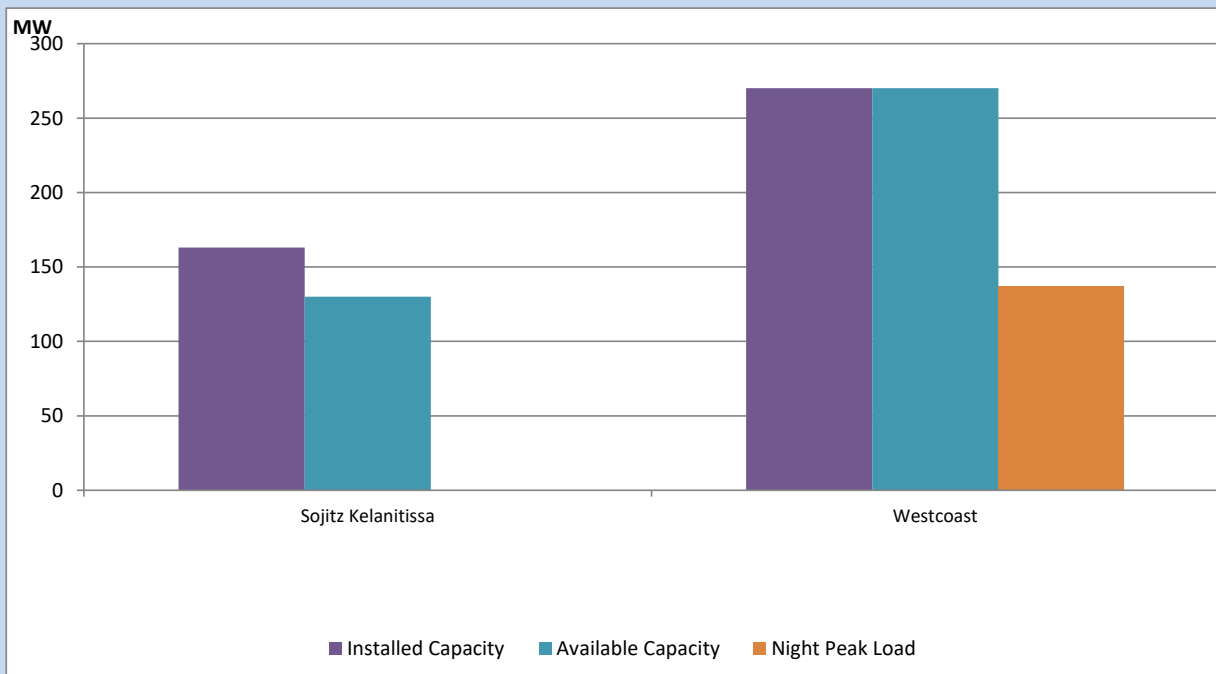
ACE Embilipitiya, ACE Matara, Asia Power, V Power Pallekale, Vpower Galle, V Power Horana, Vpower Hambantota, Vpower Valachchena and Altaqa Mahiyanganaya are not available due to expiration of PPAs



Available Generation is estimated based on plant availability at 6.00am on

March 14, 2022

IPP owned Thermal Plant Loading at the Night Peak

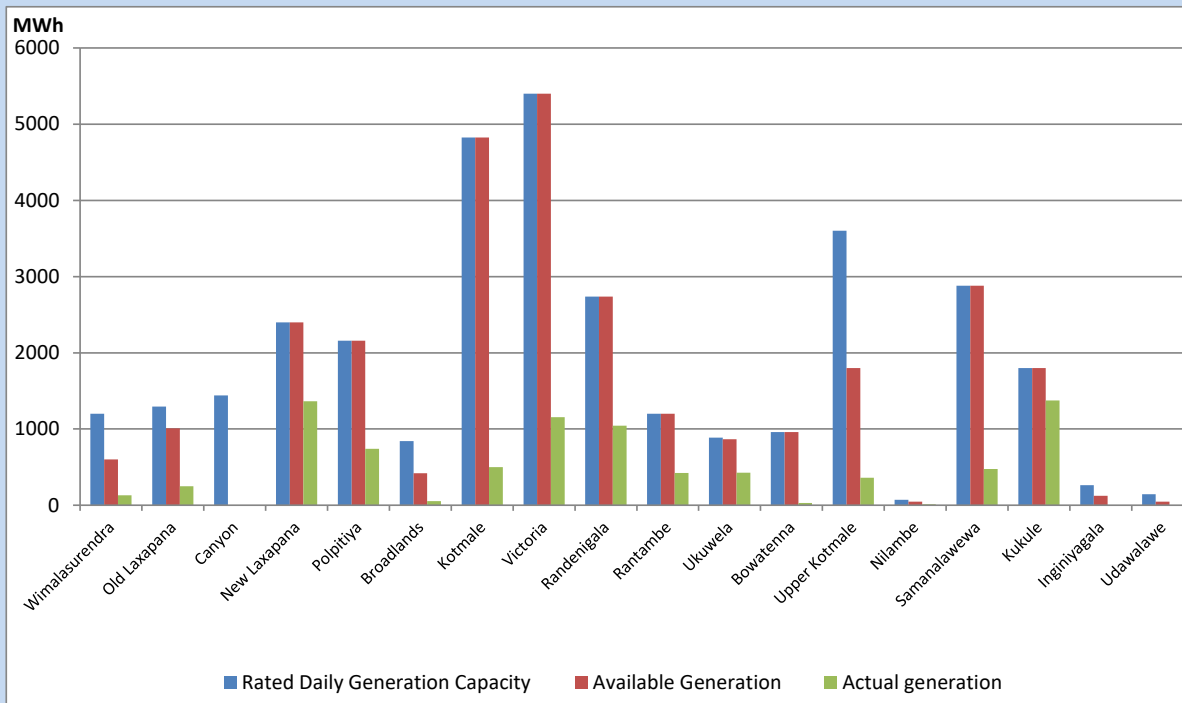


Note- Plant availability is recorded at 6.00 am on

March 14, 2022

Major Hydro Plant Dispatch

March 13, 2022

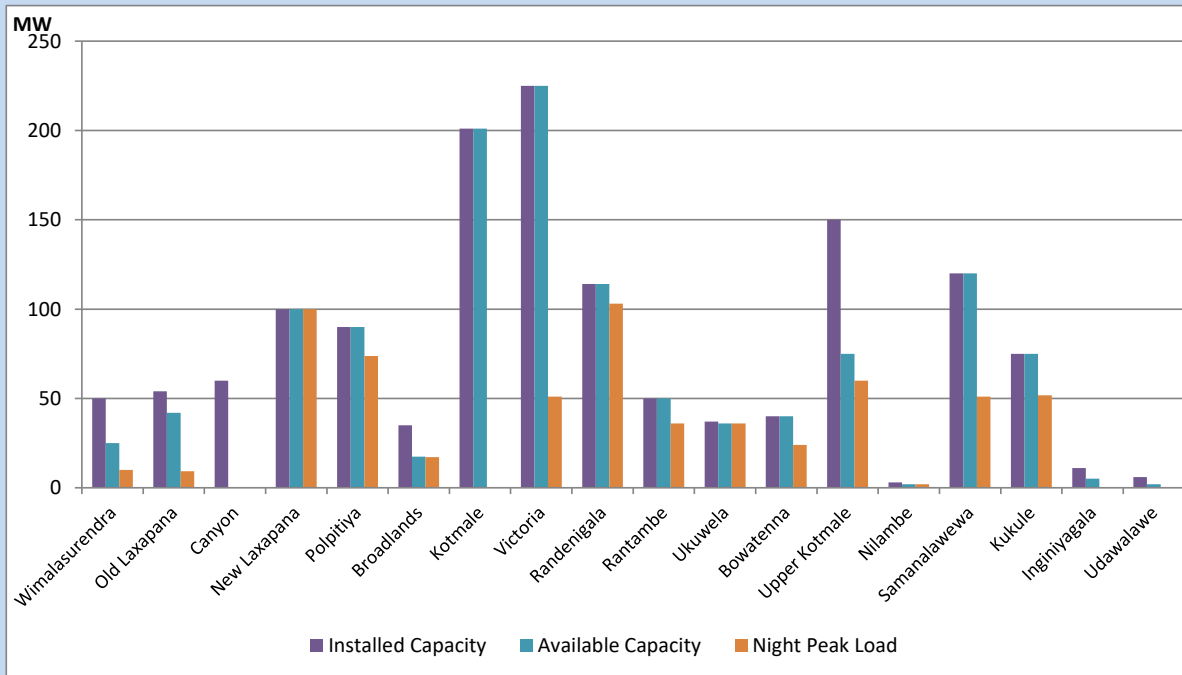


Available Generation is estimated based on plant availability at 6.00am on
 Broadlands power plant is operating in the Commissioning Stage

March 14, 2022

Major Hydro Plant Loading at Night Peak

March 13, 2022



Note- Plant availability is recorded at 6.00 am on
 Broadlands power plant is operating in the Commissioning Stage

March 14, 2022

Summary of Major Plant performance

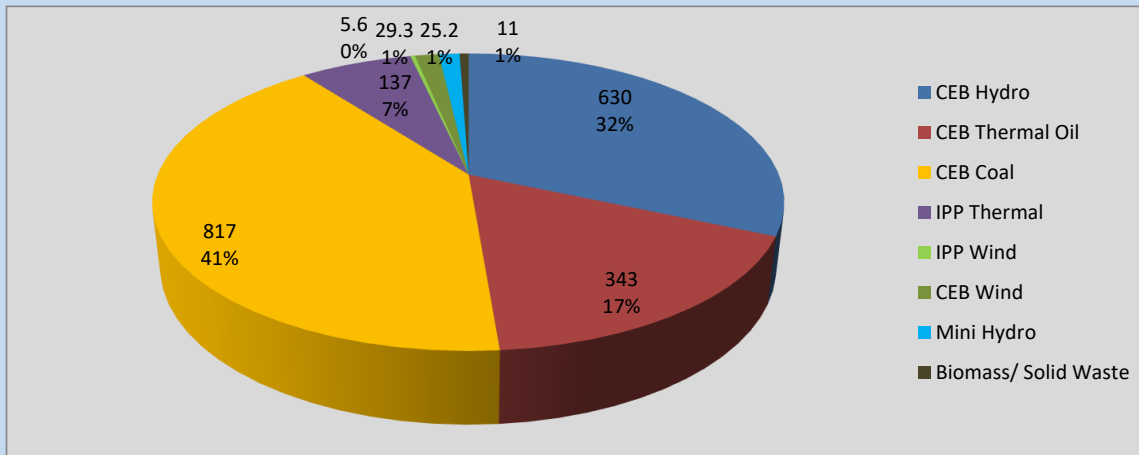
Plant	Installed Capacity	Plant Availability	Night peak Load	Plant Dispatch
	(MW)	(MW)	(MW)	(MWh)
Wimalasurendra	50	25	10	129
Old Laxapana	54	42	9	248
Canyon	60	0	0	0
New Laxapana	100	100	100	1,364
Polpitiya	90	90	74	739
Broadlands	35	18	17	54
Kotmale	201	201	0	500
Victoria	225	225	51	1,154
Randenigala	114	114	103	1,045
Rantambe	50	50	36	422
Ukuwela	37	36	36	426
Bowatenna	40	40	24	28
Upper Kotmale	150	75	60	361
Nilambe	3	2	2	12
Samanalawewa	120	120	51	476
Kukule	75	75	52	1,375
Inginiyagala	11	5	0	0
Udawalawe	6	2	0	0
Puttalam Coal I	270	270	274	6,490
Puttalam Coal II	270	270	271	6,513
Puttalam Coal III	270	270	272	6,632
KPS Small GTs	64	0	0	0
KPS GT 7	115	0	0	0
KCCP	161	150	148	2,282
Sapugaskanda A	70	64	65	1,521
Sapugaskanda B	70	63	63	1,492
Uthura Janani	26	26	0	158
Barge CEB	60	60	60	1,439
CEB-Thulhiriya	10	0	0	8
CEB-Kolonnawa	20	2	4	54
CEB-Mathugama	20	3	3	61
Sojitz Kelanitissa	163	130	0	72
West Coast	270	270	137	1,176
Total	3,280	2,798	1,993	38,676

Plant availability is the availability recorded at 6 am on

March 14, 2022

Contribution to the Night Peak in MW

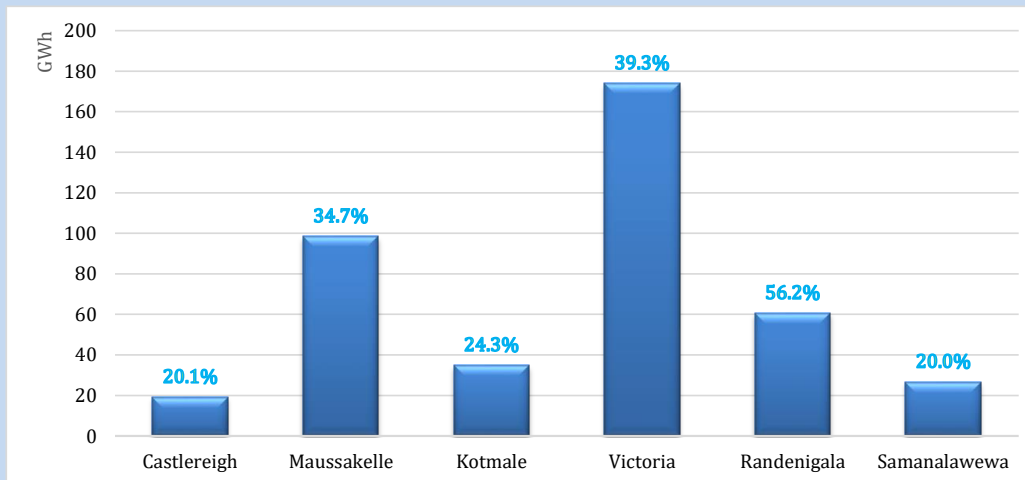
March 13, 2022



Night Peak*	1,998.1 MW
Day Peak	1,597.0 MW
Minimum Demand	1,335.8 MW

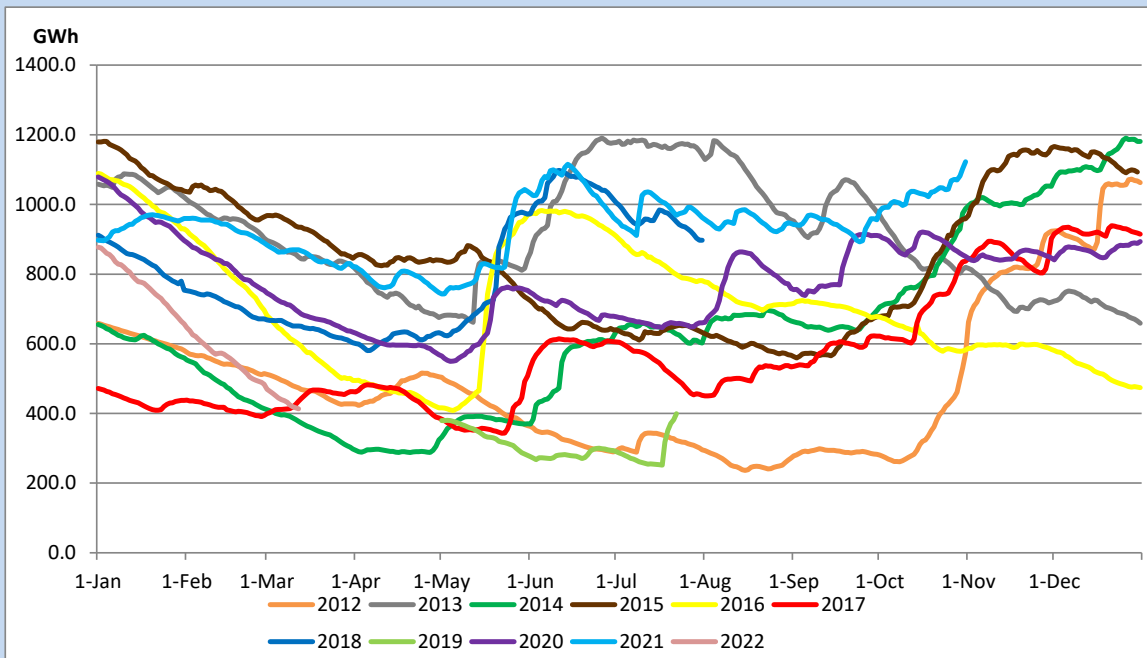
Above figures are excluding contribution from Roof Top Solar, 1MW solar, certain Wind plants and Mini Hydro plants

Reservoir Levels - as at 06.00 Hr on March 14, 2022



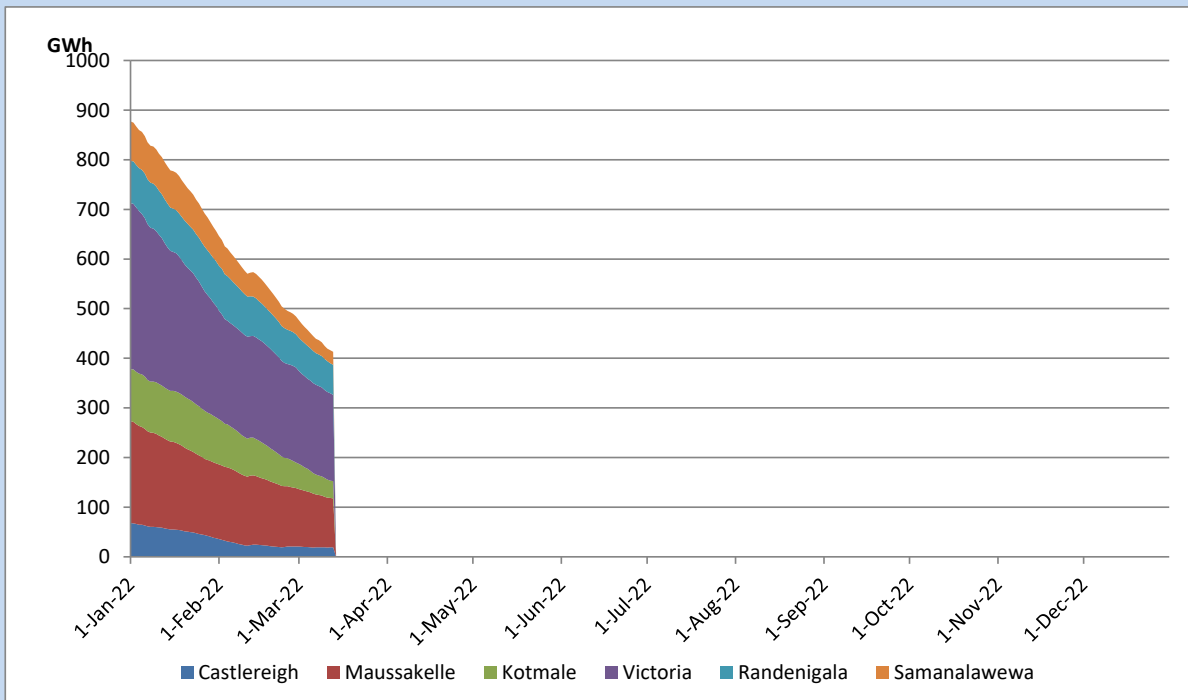
Total Reservoir Level	413.3 GWh
% of Total capacity	32.4%

Comparison of Total Reservoir Storage Levels with Past Years

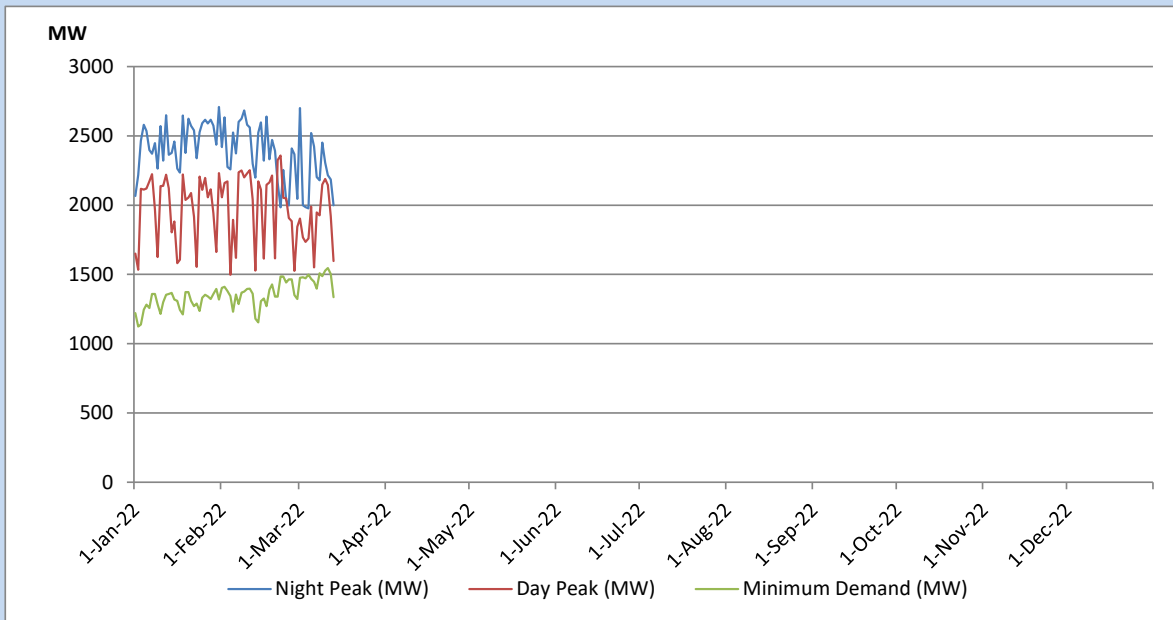


Data for 2018 and 2019 are only available for part of year.

Variation of Major Hydro Reservoir Levels in the current year (GWh)



Variation of Demand during the current year

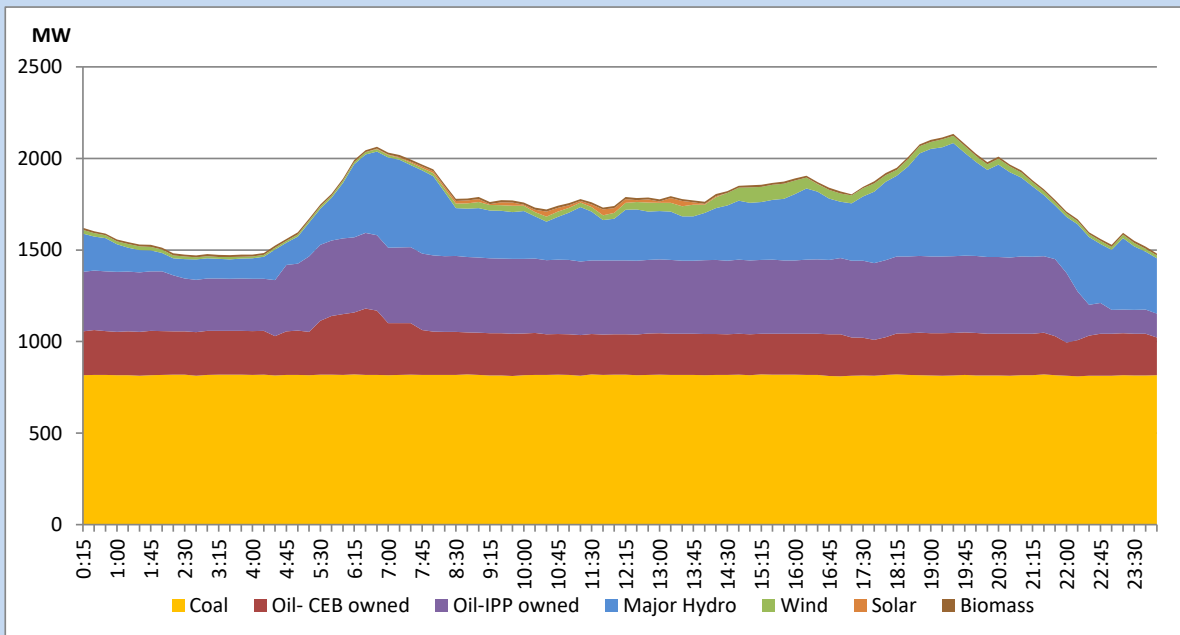


The above figures are excluding contribution from Roof Top Solar, 1MW solar, certain Wind plants and Mini Hydro plants

Daily Load Curve of the Previous day

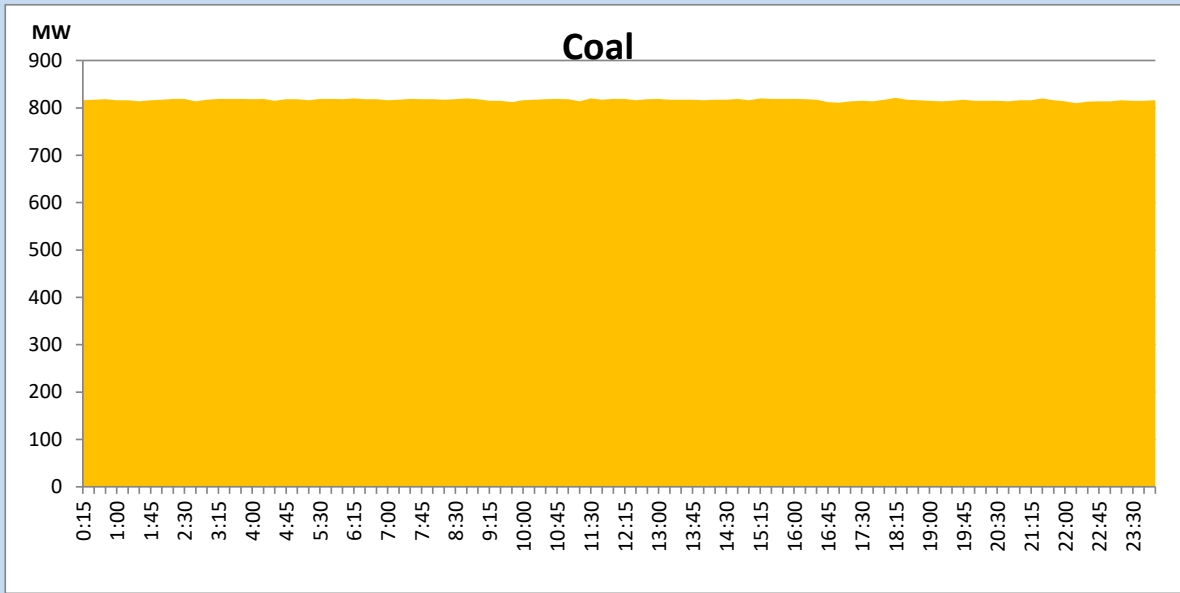
March 12, 2022

Solar and wind data is based on Telemetered Power Stations only



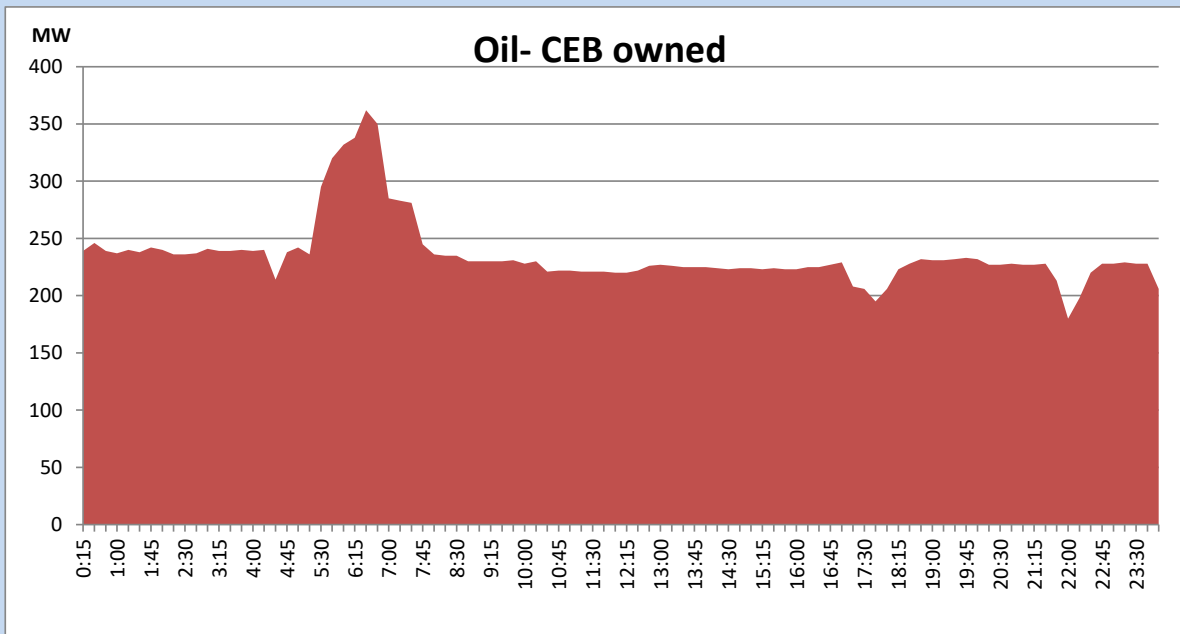
Coal Generation during the Previous day

March 12, 2022



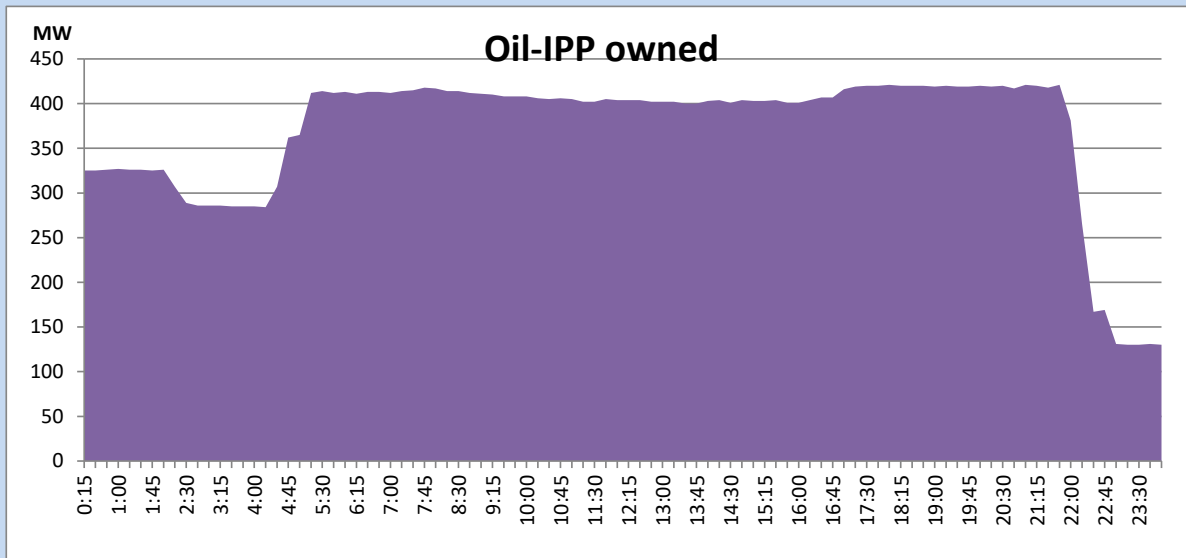
CEB Oil Plant Generation during the Previous day

March 12, 2022



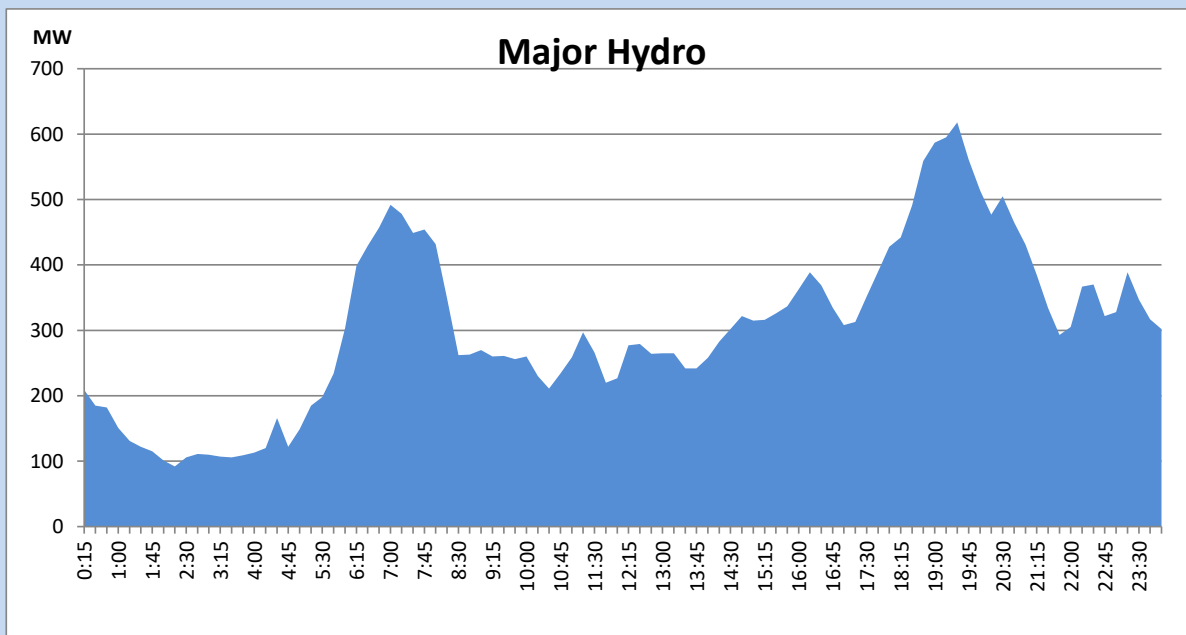
IPP Oil Plant Generation during the Previous day

March 12, 2022



Major Hydro Generation during the Previous day

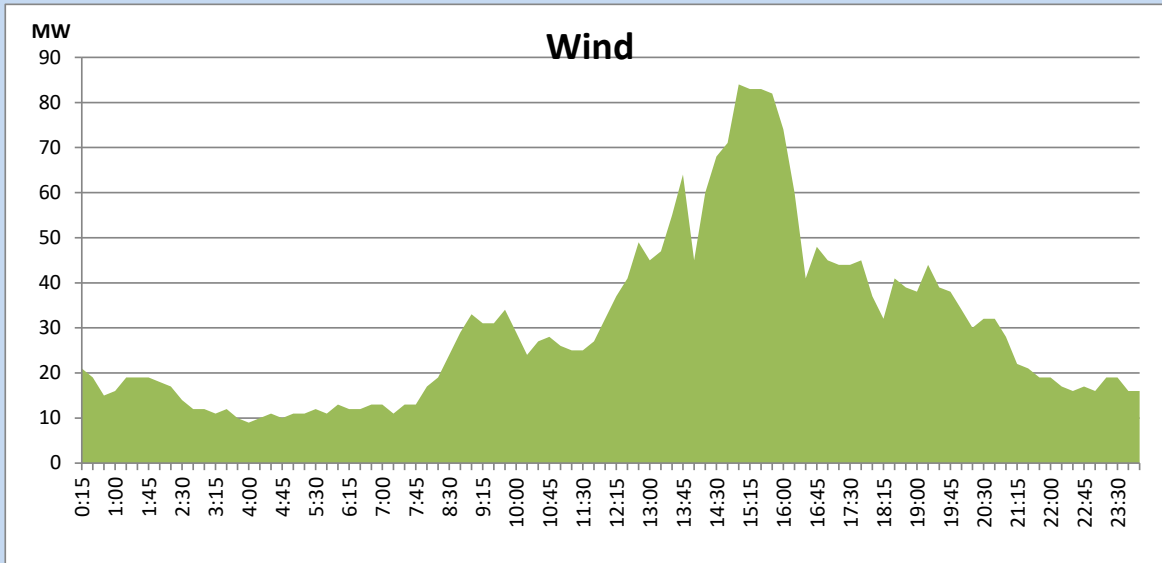
March 12, 2022



Wind Generation during the Previous day

March 12, 2022

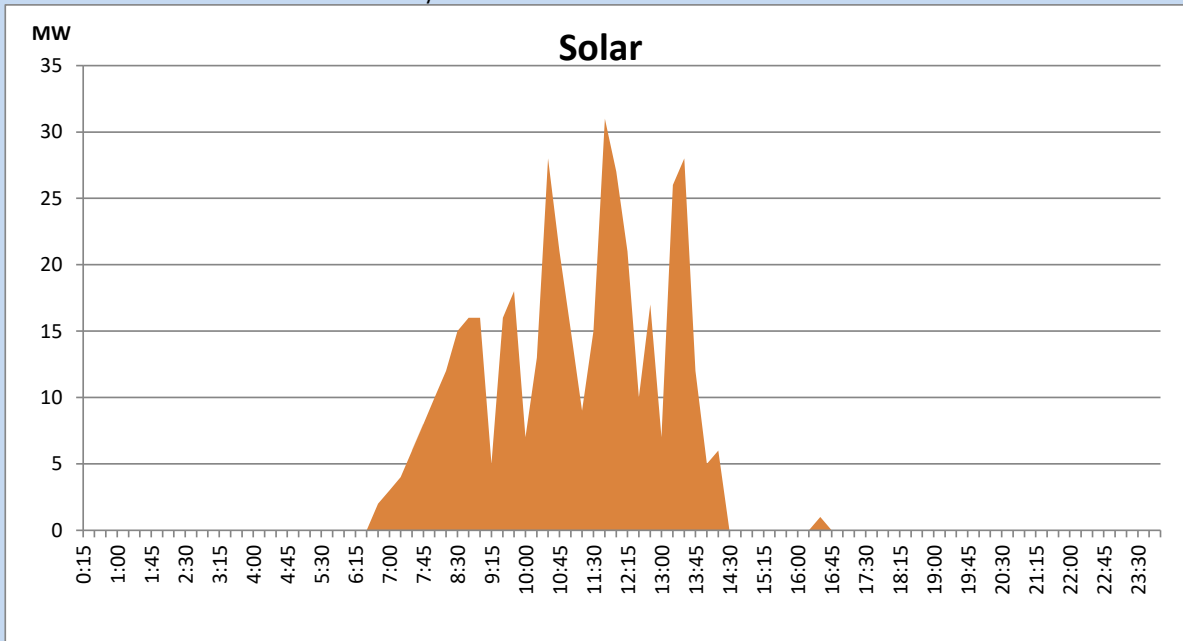
Based on Telemetered Power Stations only



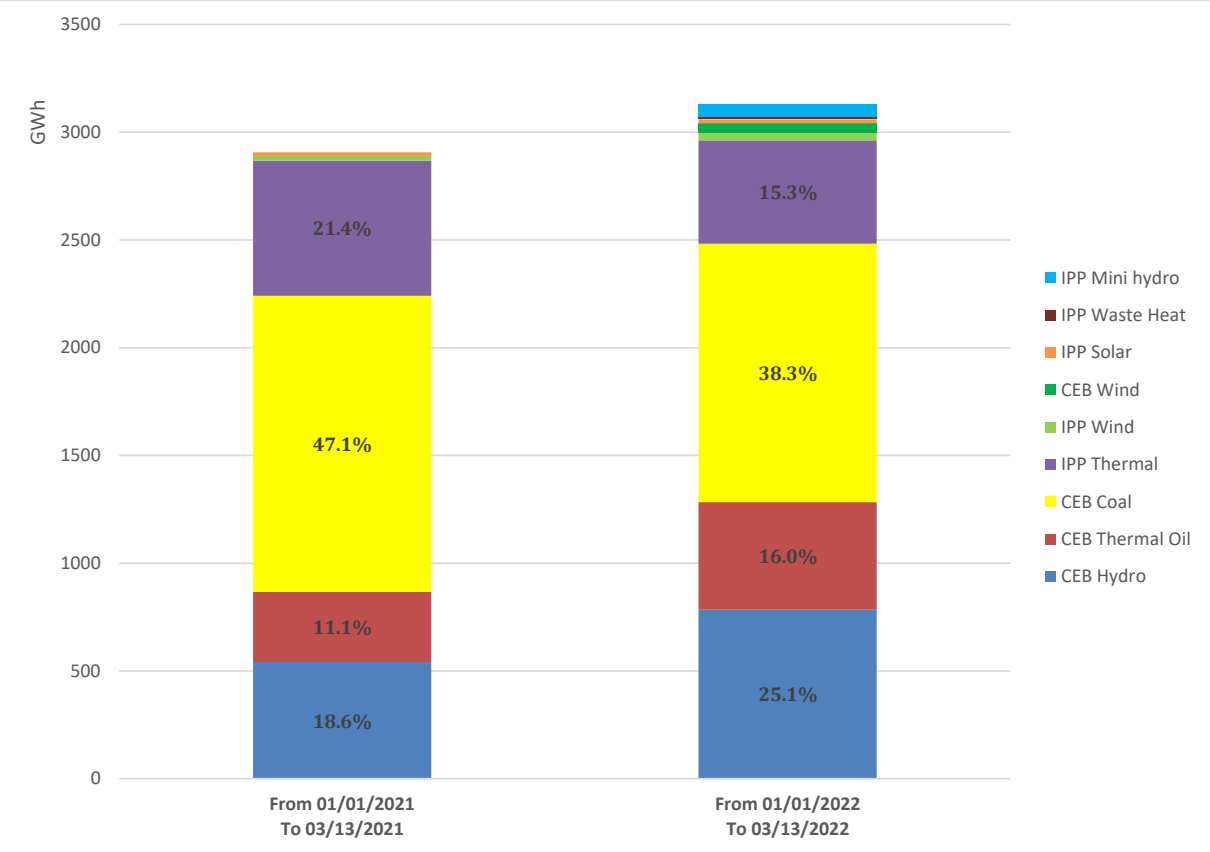
Solar Generation during the Previous day

March 12, 2022

Based on Telemetered Power Stations only



Cumulative Dispatch Comparison with Last Year



Thermal Plant Fuel types

Power Station	Primary Fuel
CEB Thermal	
Sapugaskanda 1	Heavy Fuel
Sapugaskanda 2	Heavy Fuel
Kelanitissa Small Gas Turbines	Auto Diesel
GT 7 - Kelanitissa	Auto Diesel
Kelanitissa CCY	Naphtha & Diesel
Lakvijaya 1	Coal
Lakvijaya 2	Coal
Lakvijaya 3	Coal
Uthuru Janani	Heavy Fuel
Barge CEB	Heavy Fuel

Power Station	Primary Fuel
Private Thermal	
Sojitz - Kelanitissa	Auto Diesel
West Coast	Auto Diesel

Major Incidents during the day -as reported by CEB morning of

March 14, 2022

- 1) Rotational manual load shedding was carried out from 09:00hrs to 22:00hrs.
- 2) Uthuru Janani plant performed a forced shutdown at 06:48hrs due to lack of fuel.
- 3) KCCP resumed generation at 07:08hrs after receiving fuel
- 4) KPS GT 07 resumed generation at 05:25hrs on 14.03.2022 after receiving fuel..