

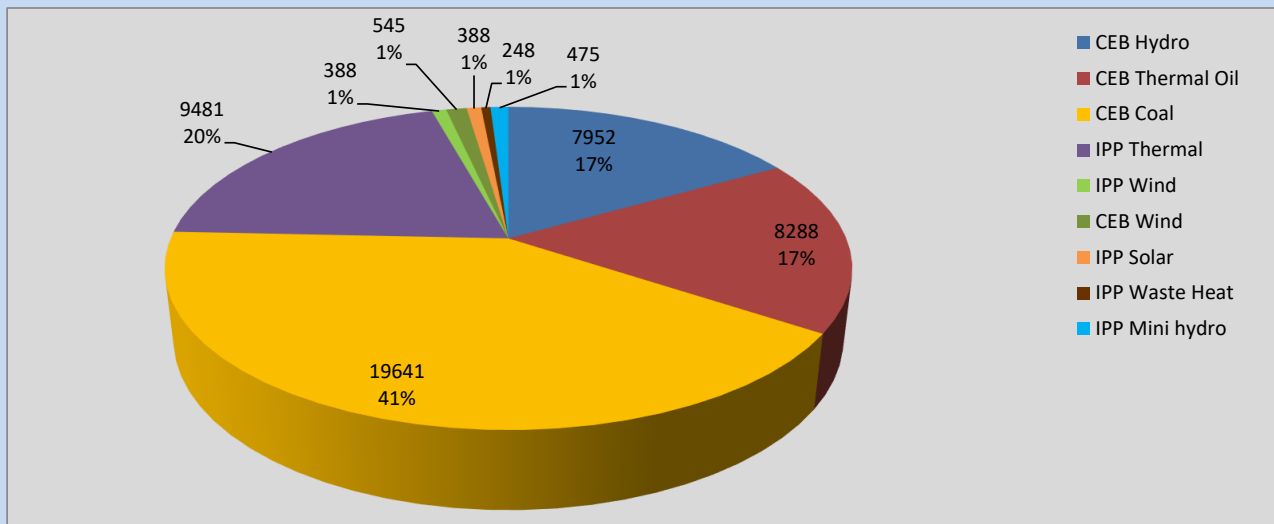
# Generation and Reservoirs Statistics

March 11, 2022



PUBLIC UTILITIES COMMISSION OF SRI LANKA

## Daily Generation Mix in MWh



**Total Generation** **47,196 MWh**

Note: Above data is excluding contribution from Roof Top Solar, 1MW Solar and certain Mini Hydro plants

## Cumulative Dispatch

Note: Following data is Excluding contribution from Roof Top Solar, 1MW solar and Mini Hydro plants

### For Current Month

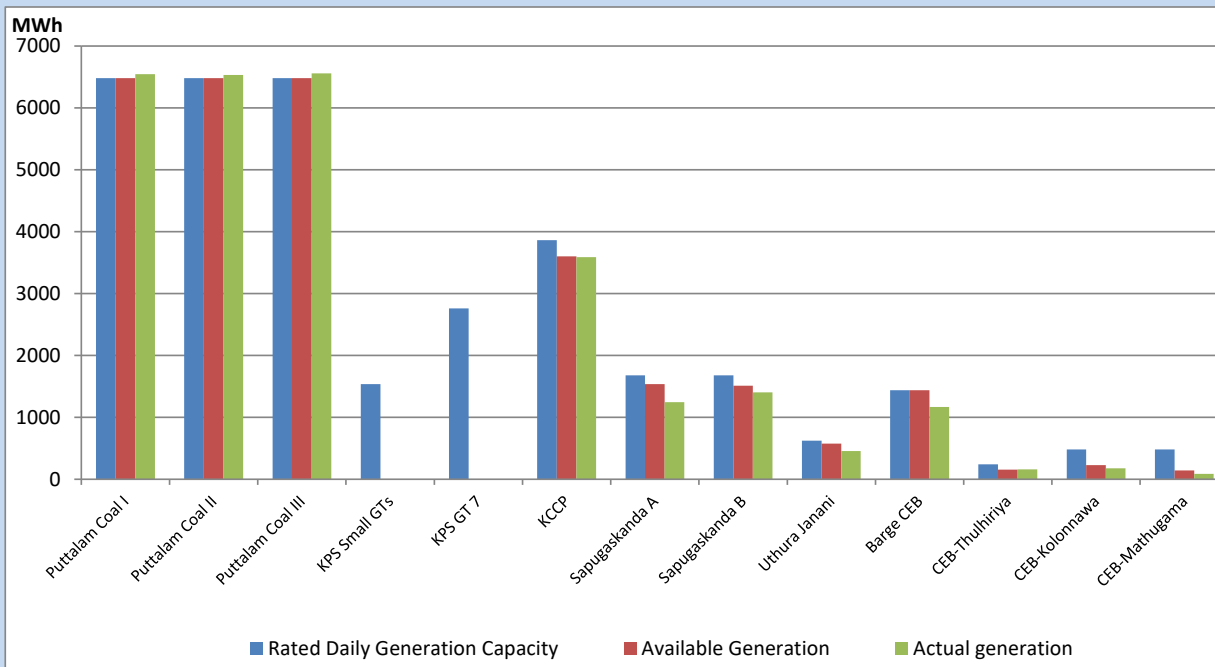
Category	Dispatch (GWh)	Percentage
CEB Hydro	91.16	18.79%
CEB Thermal Oil	74.53	15.36%
CEB Coal	215.47	44.41%
IPP Thermal	78.38	16.15%
SPP Wind	5.95	1.23%
CEB Wind	8.64	1.78%
SPP Solar	2.78	0.57%
SPP Solid Waste	2.31	0.48%
Mini Hydro	5.98	1.23%
<b>Total</b>	<b>485.20</b>	

### For Current Year

Category	Dispatch (GWh)	Percentage
CEB Hydro	769.0	25.23%
CEB Thermal Oil	486.8	15.97%
CEB Coal	1,159.0	38.02%
IPP Thermal	469.8	15.41%
SPP Wind	34.1	1.12%
CEB Wind	42.9	1.41%
SPP Solar	18.1	0.59%
SPP Solid Waste	13.4	0.44%
Mini Hydro	55.7	1.83%
<b>Total</b>	<b>3,048.4</b>	

## CEB owned Thermal Plant Dispatch

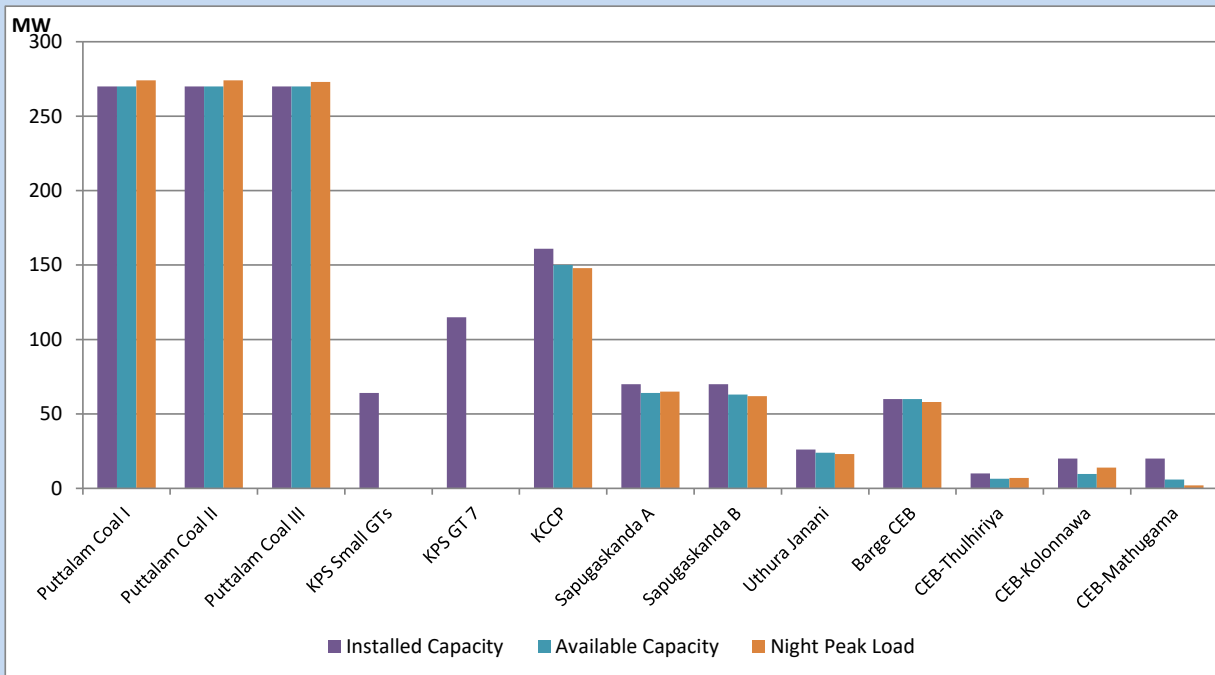
March 11, 2022



Available Generation is estimated based on plant availability at 6.00am on

March 12, 2022

## CEB owned Thermal Plant Loading at the Night Peak



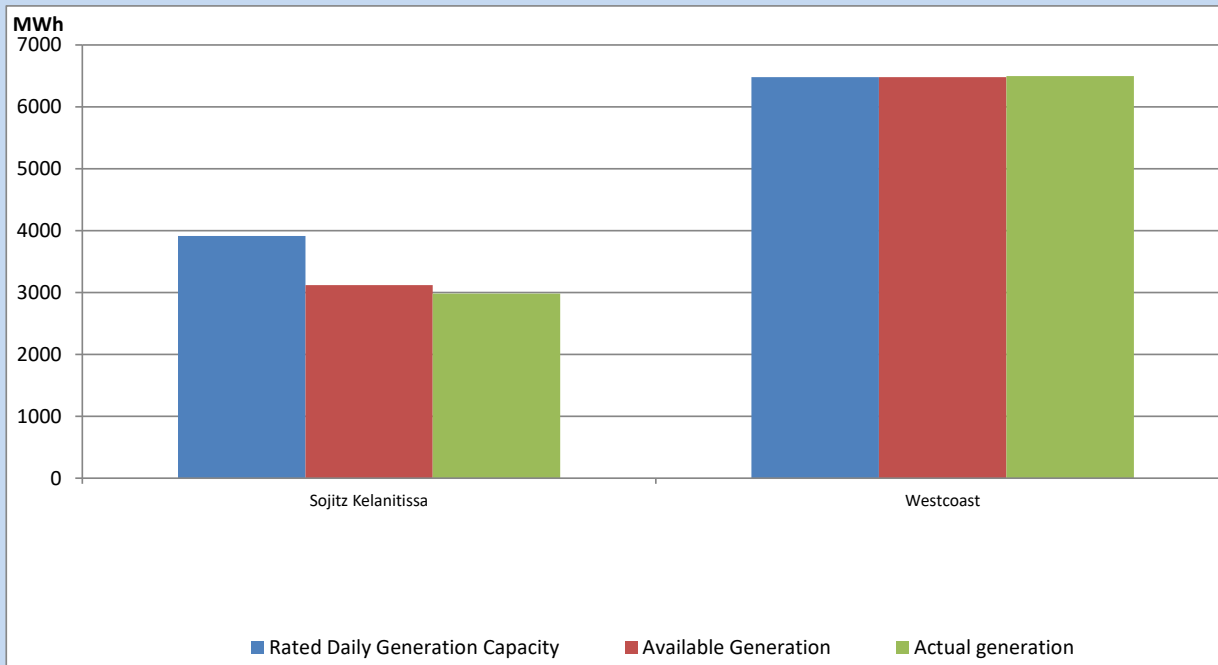
Note- Plant availability is recorded at 6.00 am on

March 12, 2022

## IPP owned Thermal Plant Dispatch

March 11, 2022

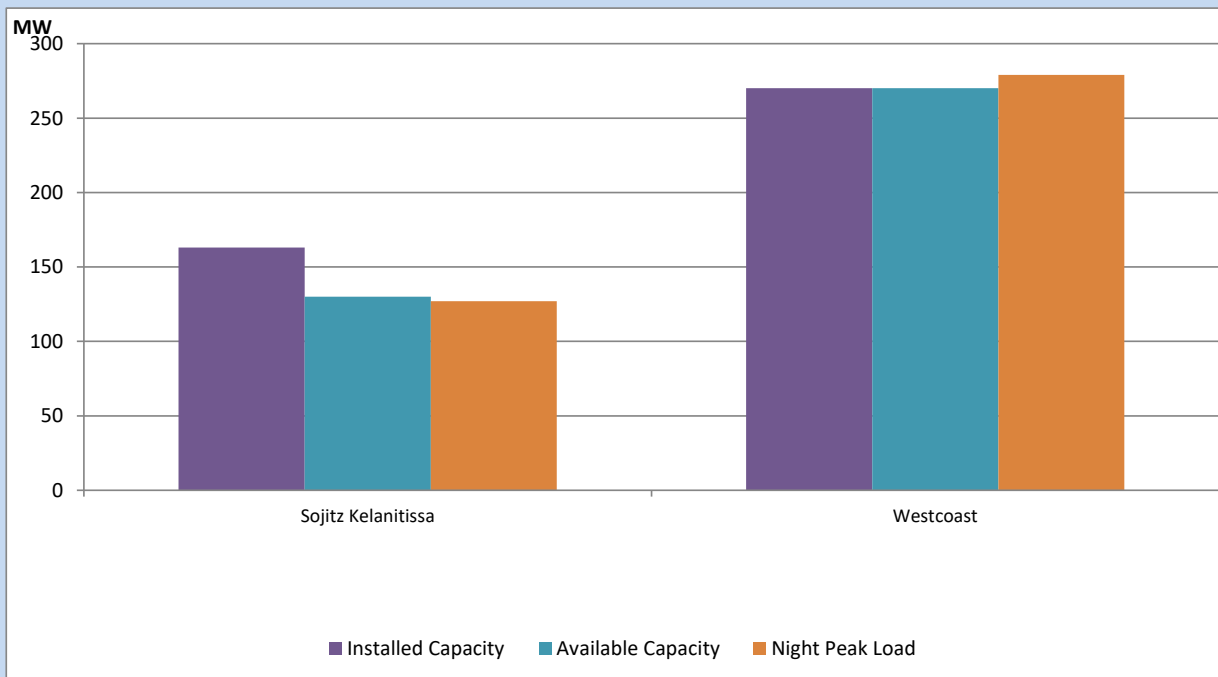
ACE Embilipitiya, ACE Matara, Asia Power, V Power Pallekale, Vpower Galle, V Power Horana, Vpower Hambantota, Vpower Valachchena and Altaqa Mahiyanganaya are not available due to expiration of PPAs



Available Generation is estimated based on plant availability at 6.00am on

March 12, 2022

## IPP owned Thermal Plant Loading at the Night Peak

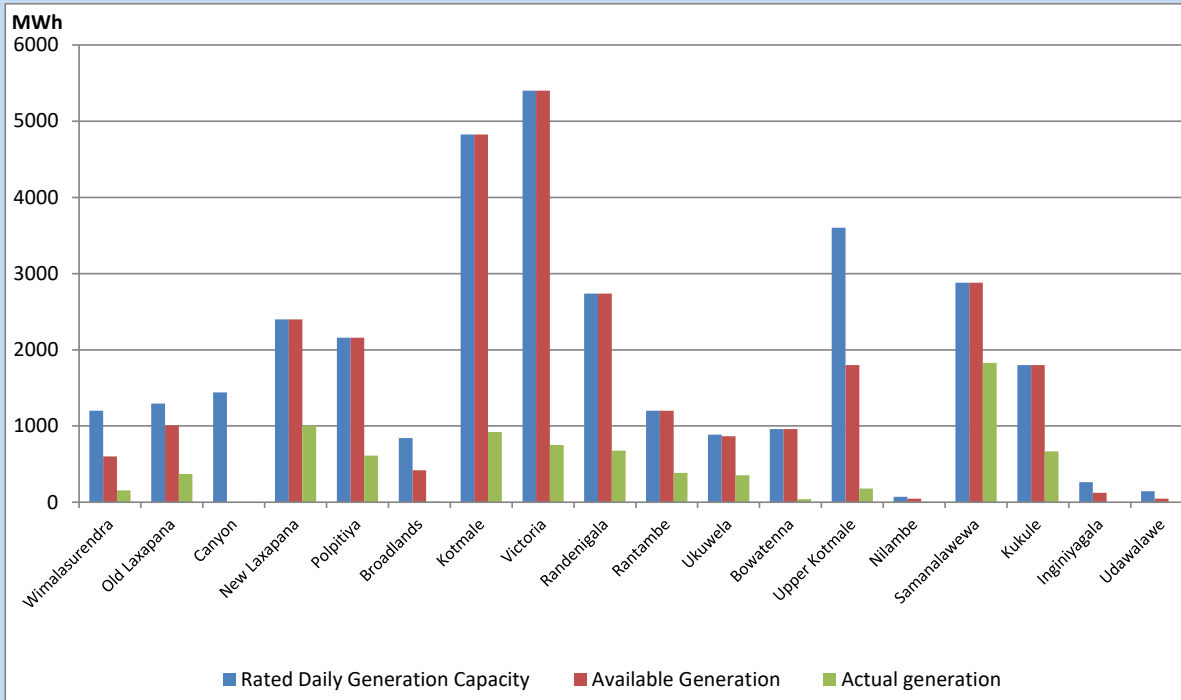


Note- Plant availability is recorded at 6.00 am on

March 12, 2022

## Major Hydro Plant Dispatch

March 11, 2022

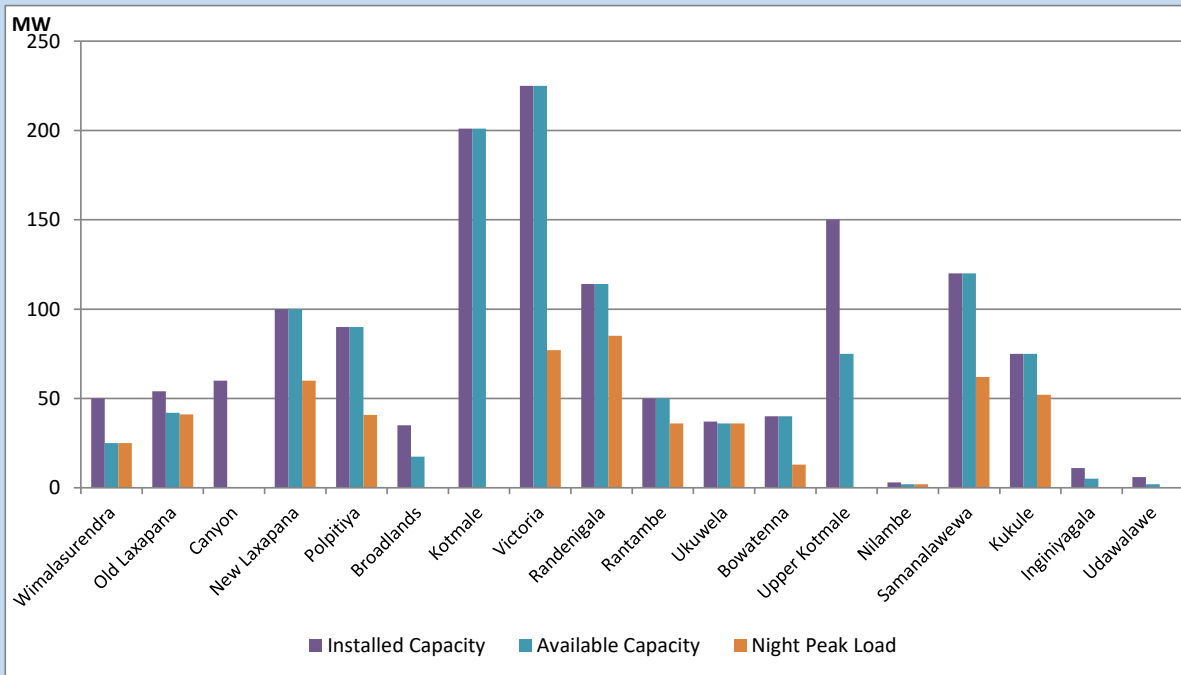


Available Generation is estimated based on plant availability at 6.00am on  
Broadlands power plant is operating in the Commissioning Stage

March 12, 2022

## Major Hydro Plant Loading at Night Peak

March 11, 2022



Note- Plant availability is recorded at 6.00 am on  
Broadlands power plant is operating in the Commissioning Stage

March 12, 2022

## Summary of Major Plant performance

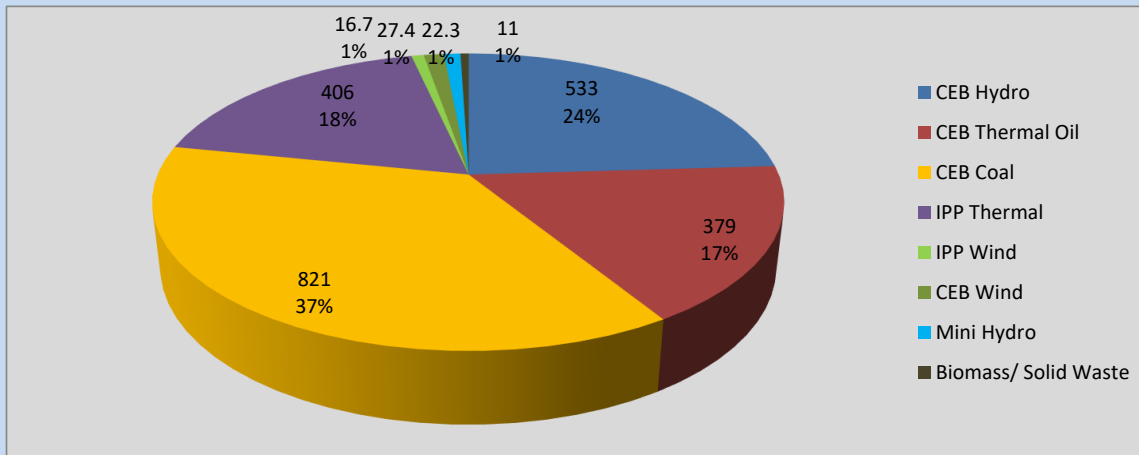
Plant	Installed Capacity	Plant Availability	Night peak Load	Plant Dispatch
	(MW)	(MW)	(MW)	(MWh)
Wimalasurendra	50	25	25	155
Old Laxapana	54	42	41	370
Canyon	60	0	0	0
New Laxapana	100	100	60	1,006
Polpitiya	90	90	41	613
Broadlands	35	18	0	7
Kotmale	201	201	0	920
Victoria	225	225	77	751
Randenigala	114	114	85	676
Rantambe	50	50	36	384
Ukuwela	37	36	36	353
Bowatenna	40	40	13	38
Upper Kotmale	150	75	0	180
Nilambe	3	2	2	5
Samanalawewa	120	120	62	1,828
Kukule	75	75	52	666
Inginiyagala	11	5	0	0
Udawalawe	6	2	0	0
Puttalam Coal I	270	270	274	6,547
Puttalam Coal II	270	270	274	6,535
Puttalam Coal III	270	270	273	6,559
KPS Small GTs	64	0	0	0
KPS GT 7	115	0	0	0
KCCP	161	150	148	3,587
Sapugaskanda A	70	64	65	1,246
Sapugaskanda B	70	63	62	1,404
Uthura Janani	26	24	23	458
Barge CEB	60	60	58	1,170
CEB-Thulhiriya	10	6	7	160
CEB-Kolonnawa	20	10	14	175
CEB-Mathugama	20	6	2	88
Sojitz Kelanitissa	163	130	127	2,982
West Coast	270	270	279	6,499
<b>Total</b>	<b>3,280</b>	<b>2,813</b>	<b>2,213</b>	<b>47,196</b>

Plant availability is the availability recorded at 6 am on

March 12, 2022

## Contribution to the Night Peak in MW

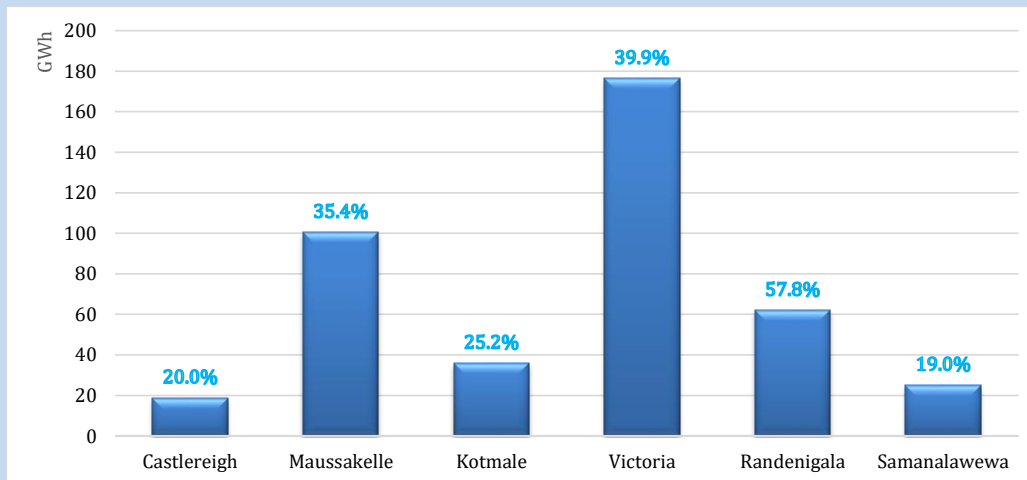
March 11, 2022



Night Peak*	2,216.4 MW
Day Peak	2,145.3 MW
Minimum Demand	1,545.9 MW

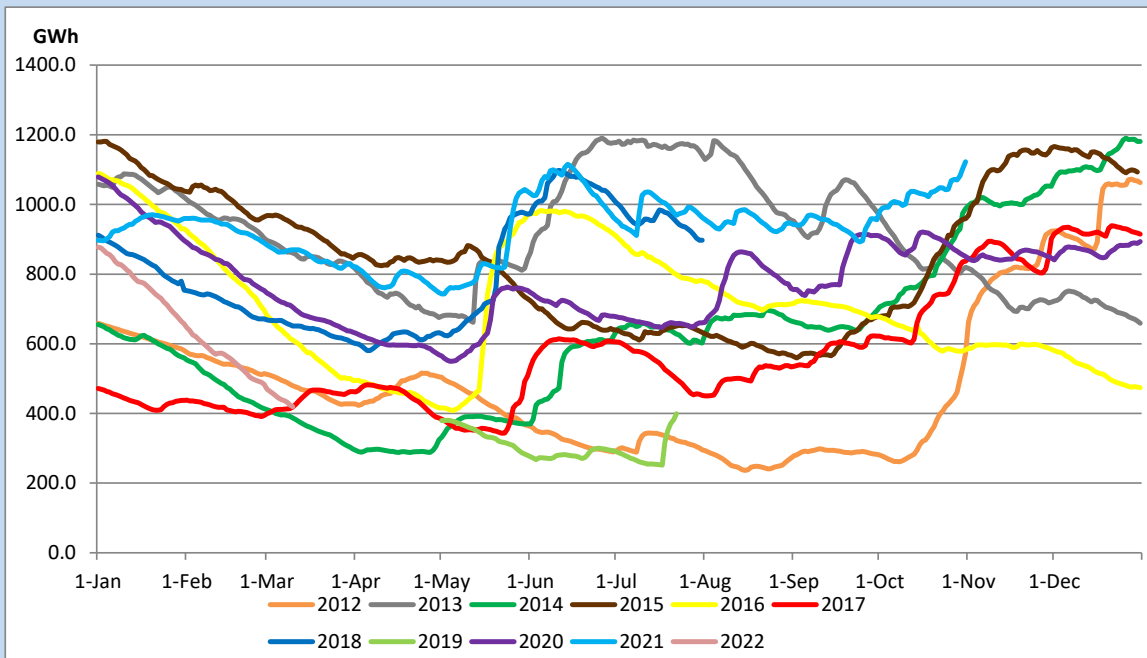
Above figures are excluding contribution from Roof Top Solar, 1MW solar, certain Wind plants and Mini Hydro plants

## Reservoir Levels - as at 06.00 Hr on March 12, 2022



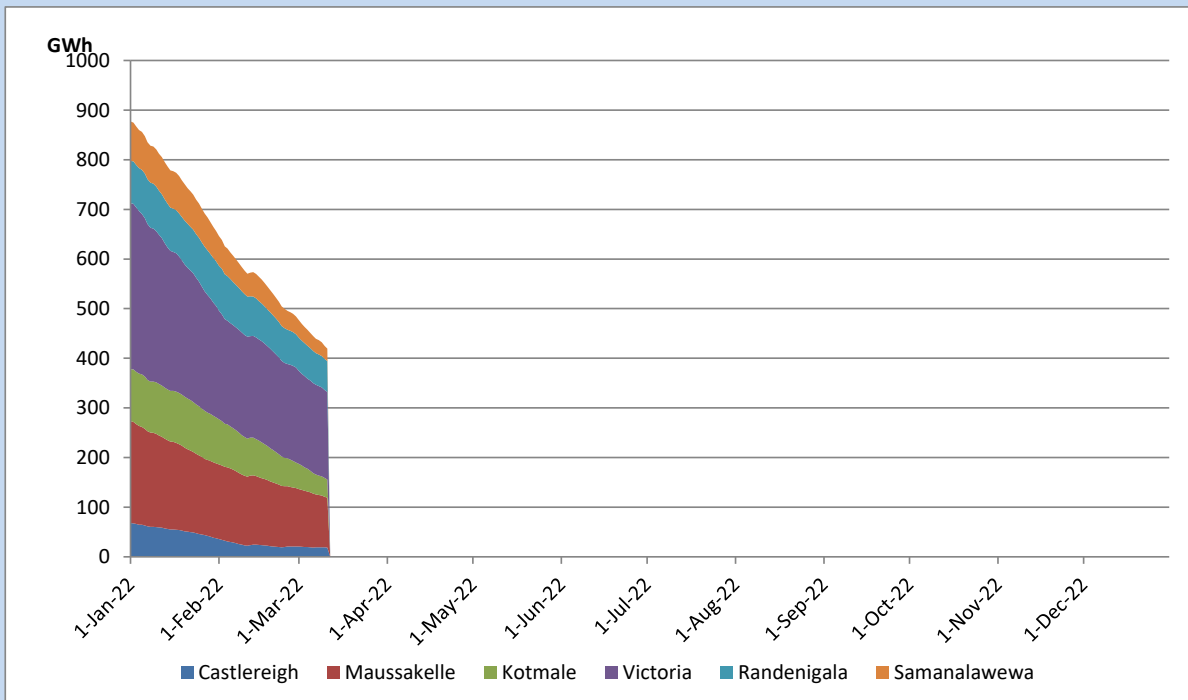
Total Reservoir Level	419.3 GWh
% of Total capacity	32.9%

## Comparison of Total Reservoir Storage Levels with Past Years



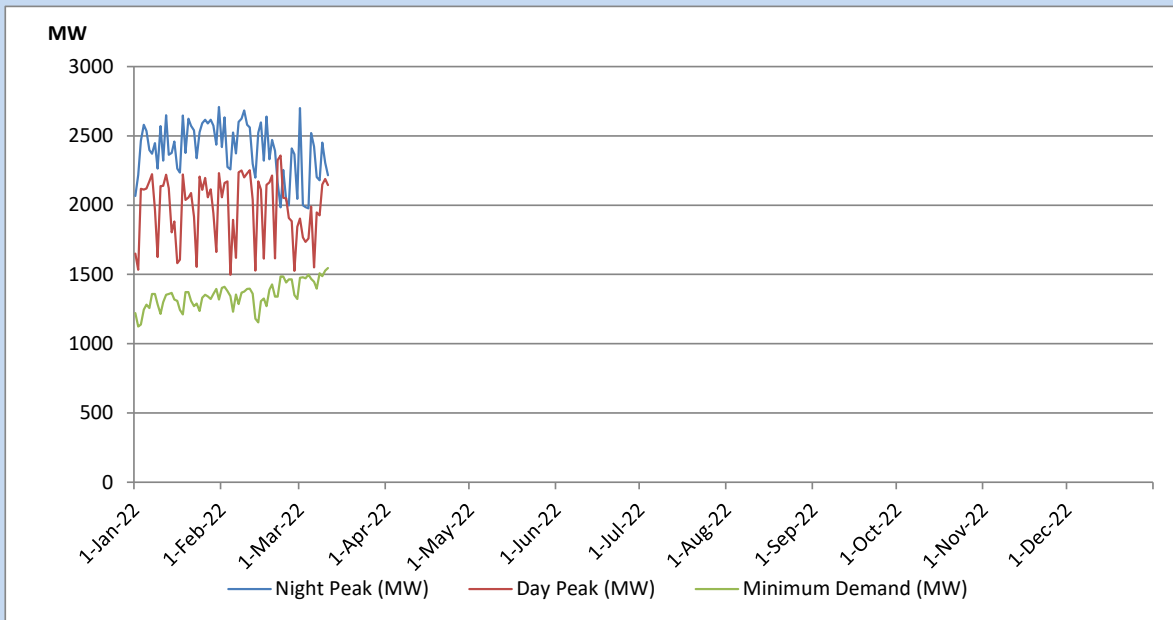
Data for 2018 and 2019 are only available for part of year.

## Variation of Major Hydro Reservoir Levels in the current year (GWh)





## Variation of Demand during the current year

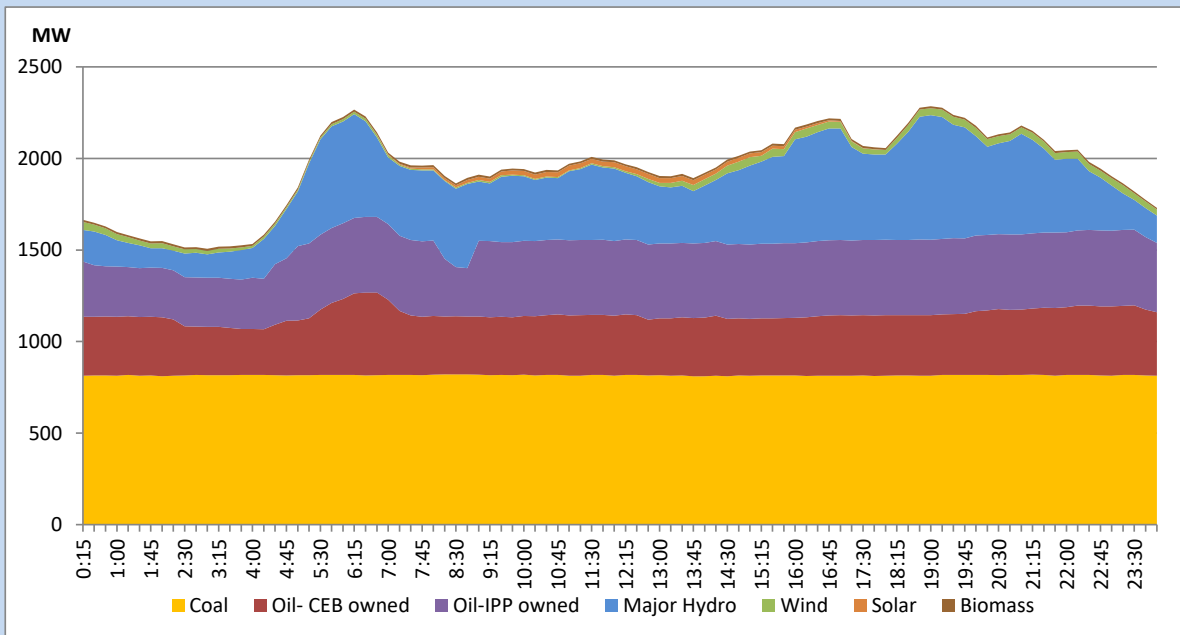


The above figures are excluding contribution from Roof Top Solar, 1MW solar, certain Wind plants and Mini Hydro plants

## Daily Load Curve of the Previous day

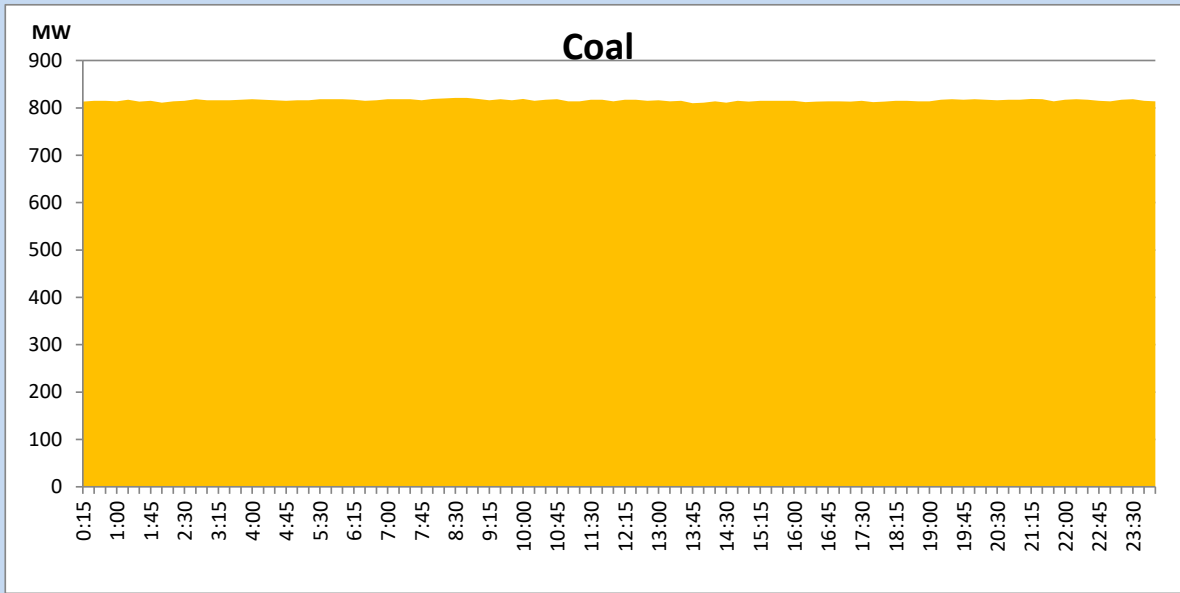
March 10, 2022

Solar and wind data is based on Telemetered Power Stations only



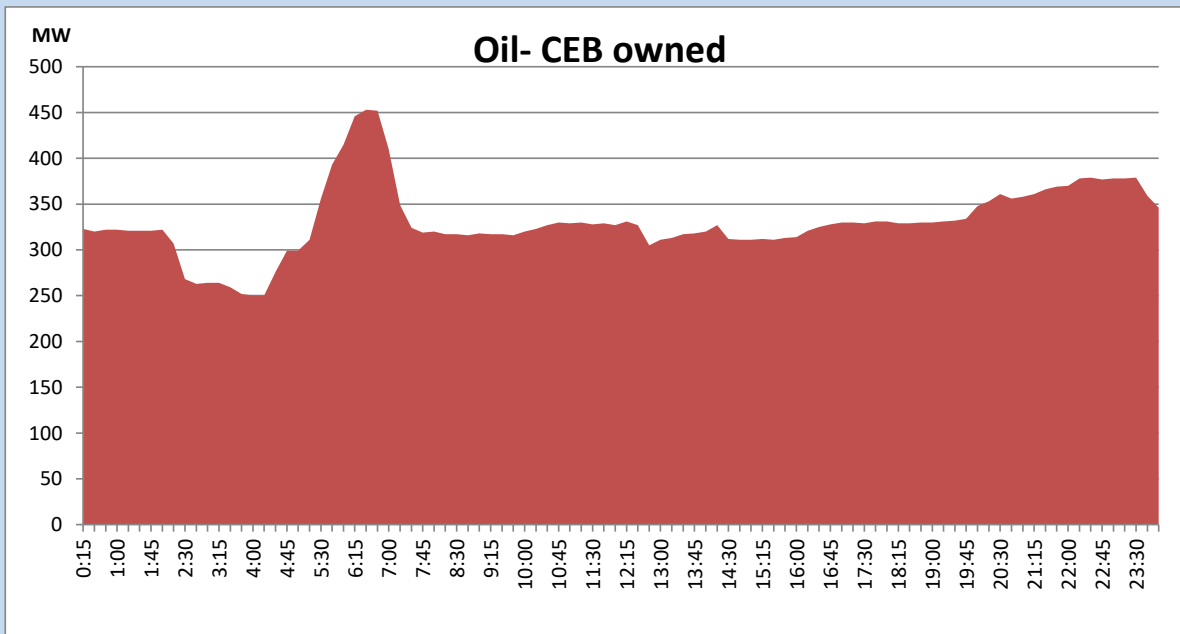
## Coal Generation during the Previous day

March 10, 2022



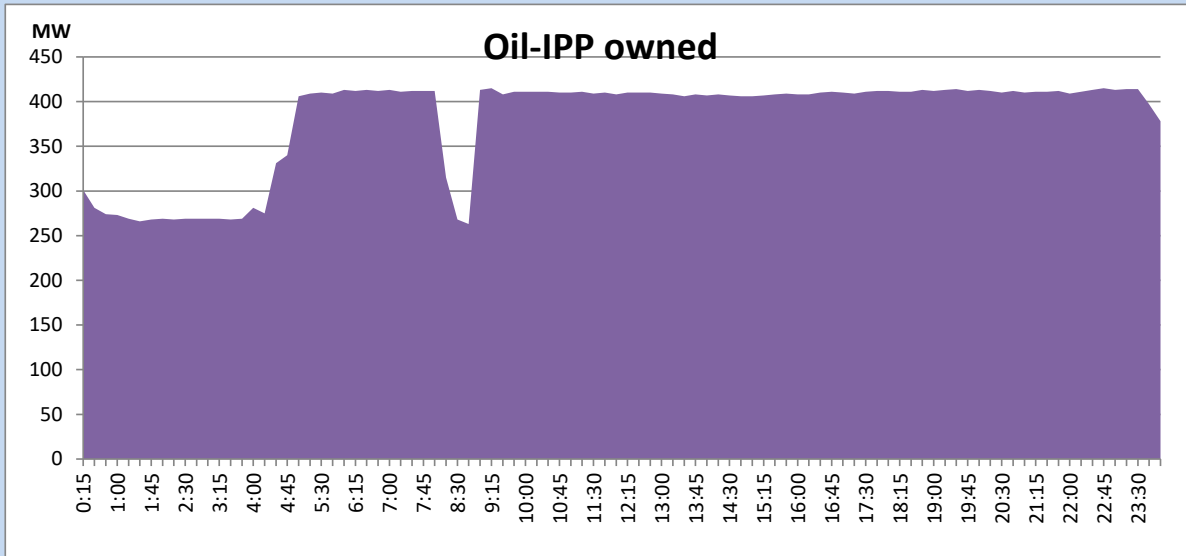
## CEB Oil Plant Generation during the Previous day

March 10, 2022



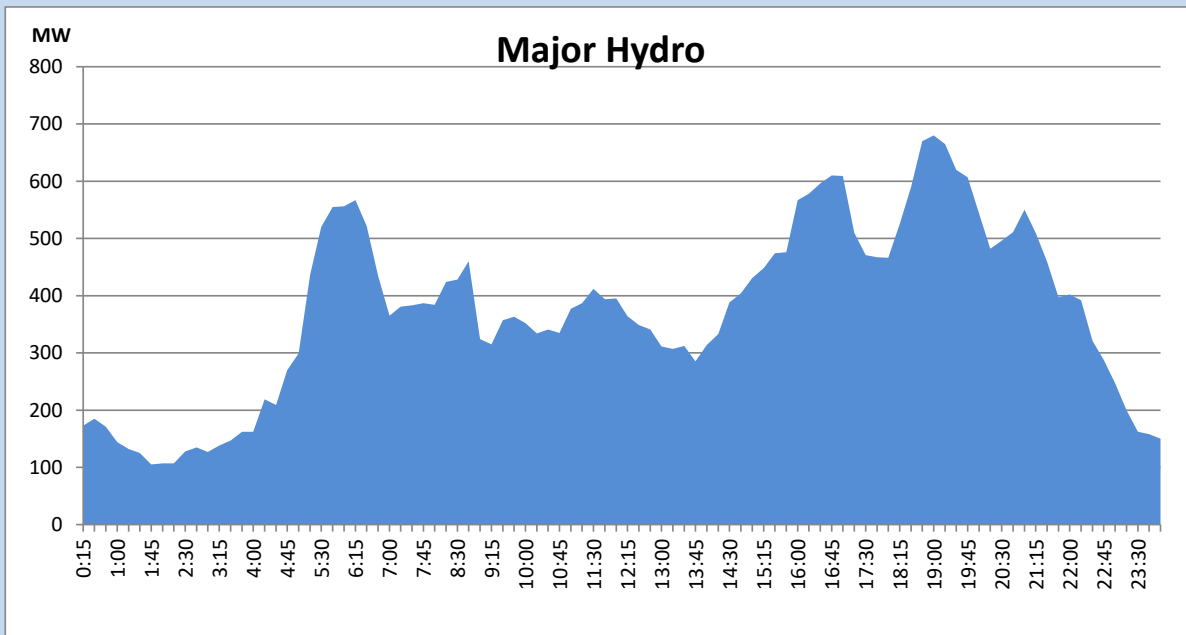
## IPP Oil Plant Generation during the Previous day

March 10, 2022



## Major Hydro Generation during the Previous day

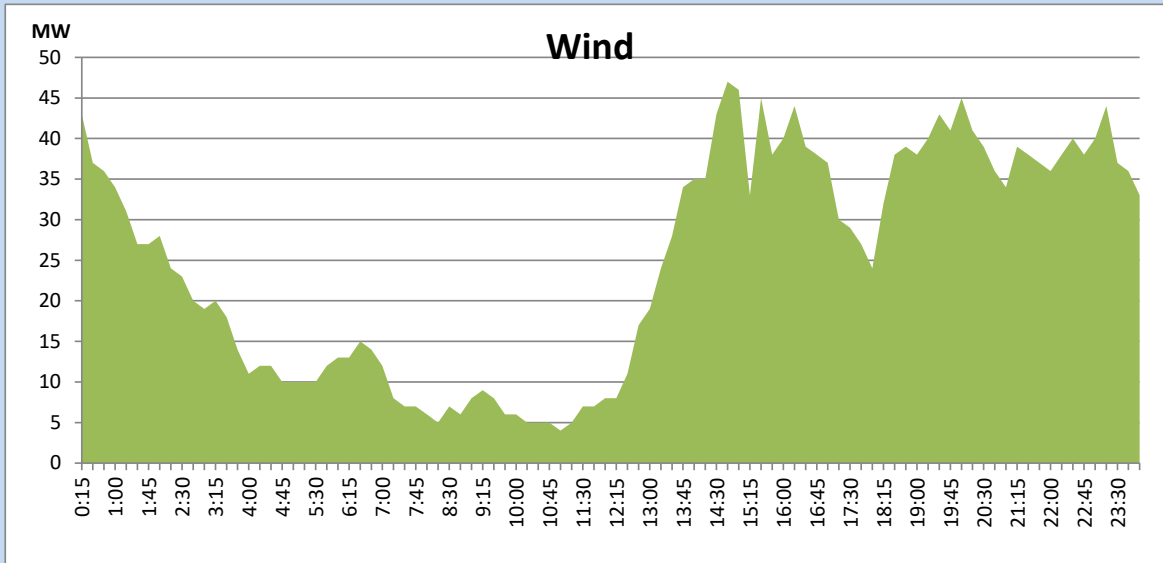
March 10, 2022



## Wind Generation during the Previous day

March 10, 2022

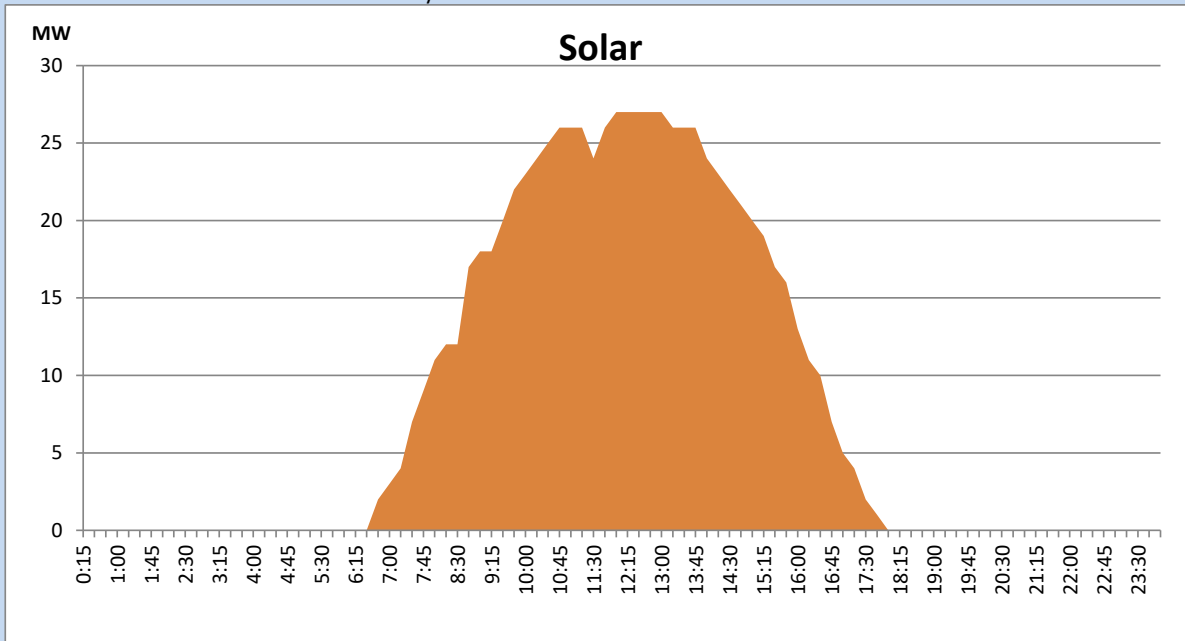
Based on Telemetered Power Stations only



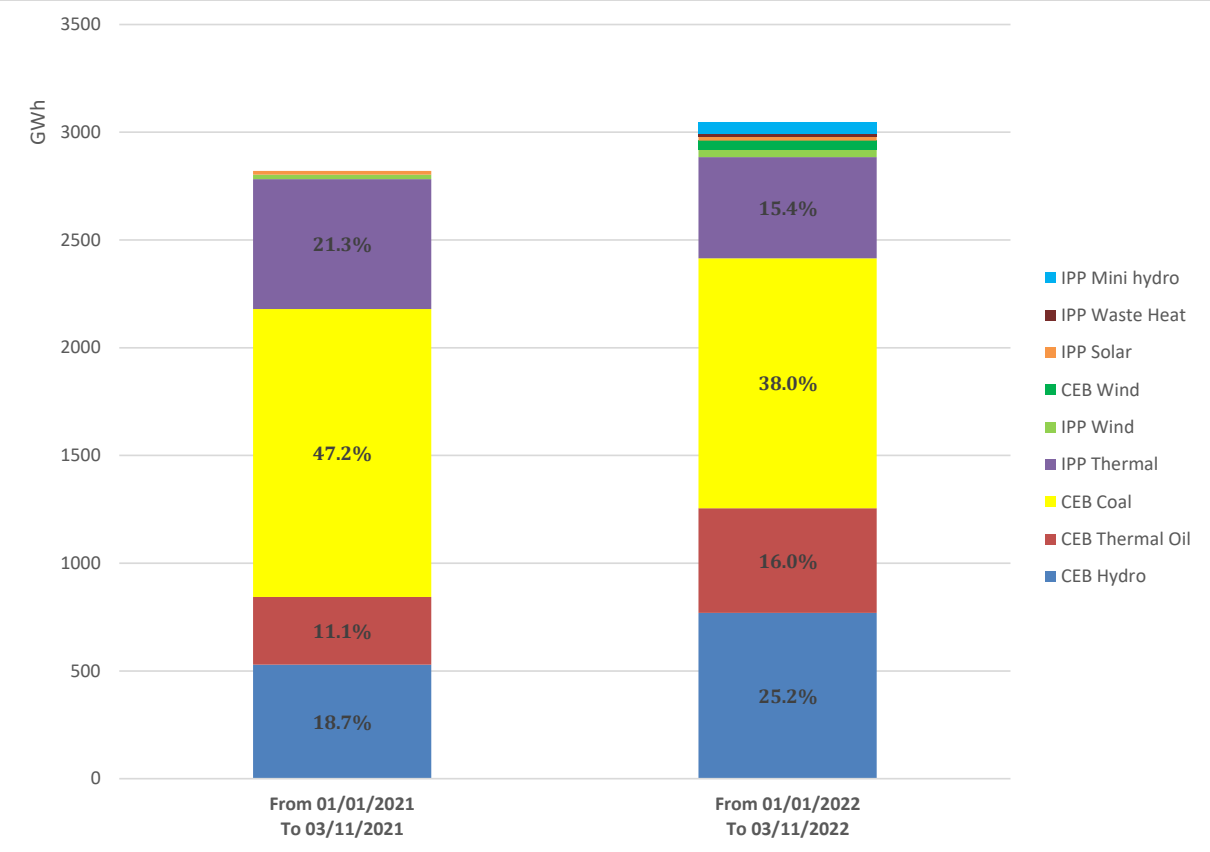
## Solar Generation during the Previous day

March 10, 2022

Based on Telemetered Power Stations only



# Cumulative Dispatch Comparison with Last Year



## Thermal Plant Fuel types

Power Station	Primary Fuel
CEB Thermal	
Sapugaskanda 1	Heavy Fuel
Sapugaskanda 2	Heavy Fuel
Kelanitissa Small Gas Turbines	Auto Diesel
GT 7 - Kelanitissa	Auto Diesel
Kelanitissa CCY	Naphtha & Diesel
Lakvijaya 1	Coal
Lakvijaya 2	Coal
Lakvijaya 3	Coal
Uthuru Janani	Heavy Fuel
Barge CEB	Heavy Fuel

Power Station	Primary Fuel
Private Thermal	
Sojitz - Kelanitissa	Auto Diesel
West Coast	Auto Diesel

Major Incidents during the day -as reported by CEB morning of

March 12, 2022

- 1) Rotational manual load shedding was carried out from 08:00hrs to 23:00hrs.