

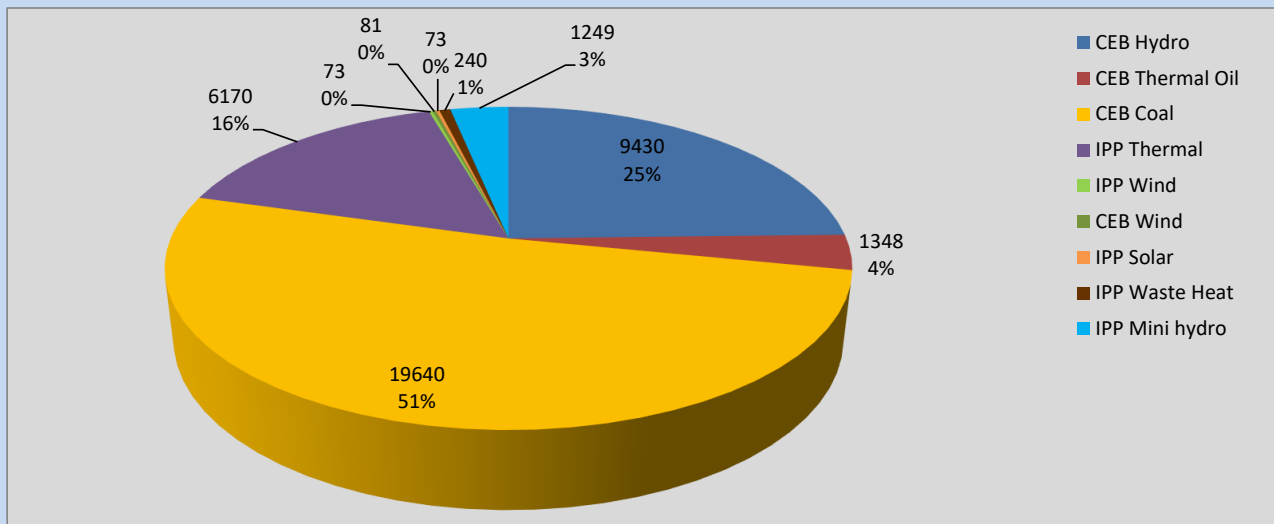
Generation and Reservoirs Statistics

April 7, 2022



PUBLIC UTILITIES COMMISSION OF SRI LANKA

Daily Generation Mix in MWh



Total Generation **38,517 MWh**

Note: Above data is excluding contribution from Roof Top Solar, 1MW Solar and certain Mini Hydro plants

Cumulative Dispatch

Note: Following data is Excluding contribution from Roof Top Solar, 1MW solar and Mini Hydro plants

For Current Month

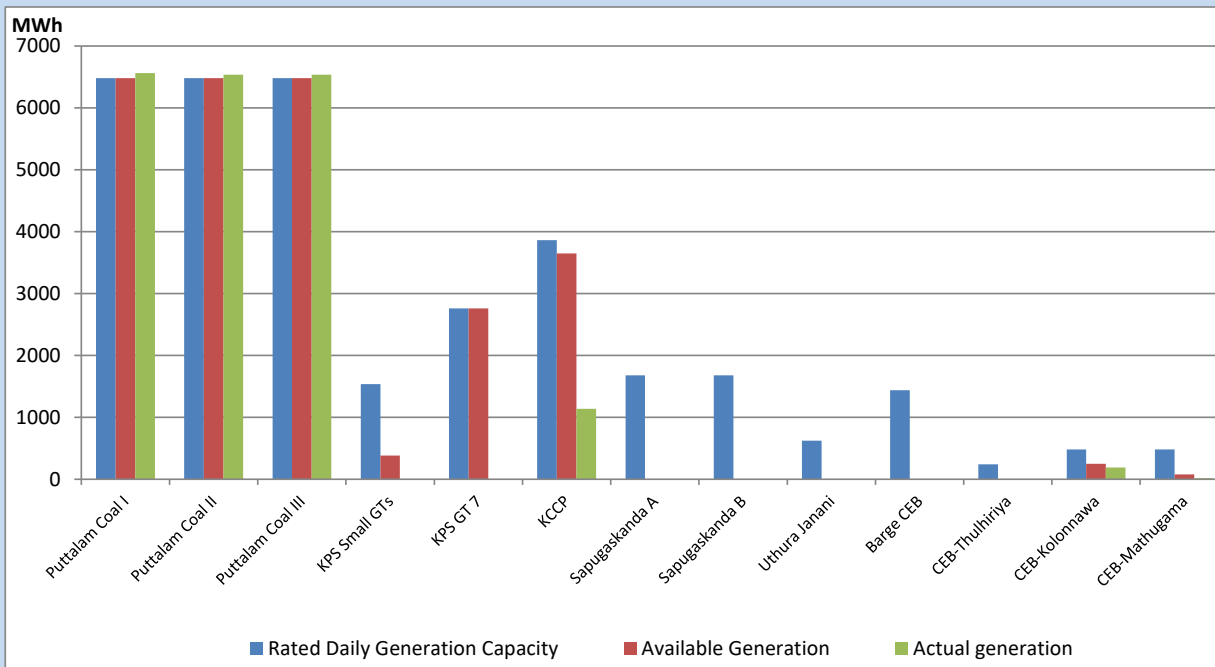
Category	Dispatch (GWh)	Percentage
CEB Hydro	52.25	19.87%
CEB Thermal Oil	28.56	10.86%
CEB Coal	137.09	52.13%
IPP Thermal	32.20	12.24%
SPP Wind	1.33	0.51%
CEB Wind	1.57	0.60%
SPP Solar	1.91	0.73%
SPP Solid Waste	1.47	0.56%
Mini Hydro	6.61	2.51%
Total	262.99	

For Current Year

Category	Dispatch (GWh)	Percentage
CEB Hydro	982.2	23.49%
CEB Thermal Oil	669.7	16.02%
CEB Coal	1,687.6	40.36%
IPP Thermal	625.1	14.95%
SPP Wind	43.7	1.05%
CEB Wind	55.3	1.32%
SPP Solar	25.5	0.61%
SPP Solid Waste	19.2	0.46%
Mini Hydro	73.0	1.75%
Total	4,181.1	

CEB owned Thermal Plant Dispatch

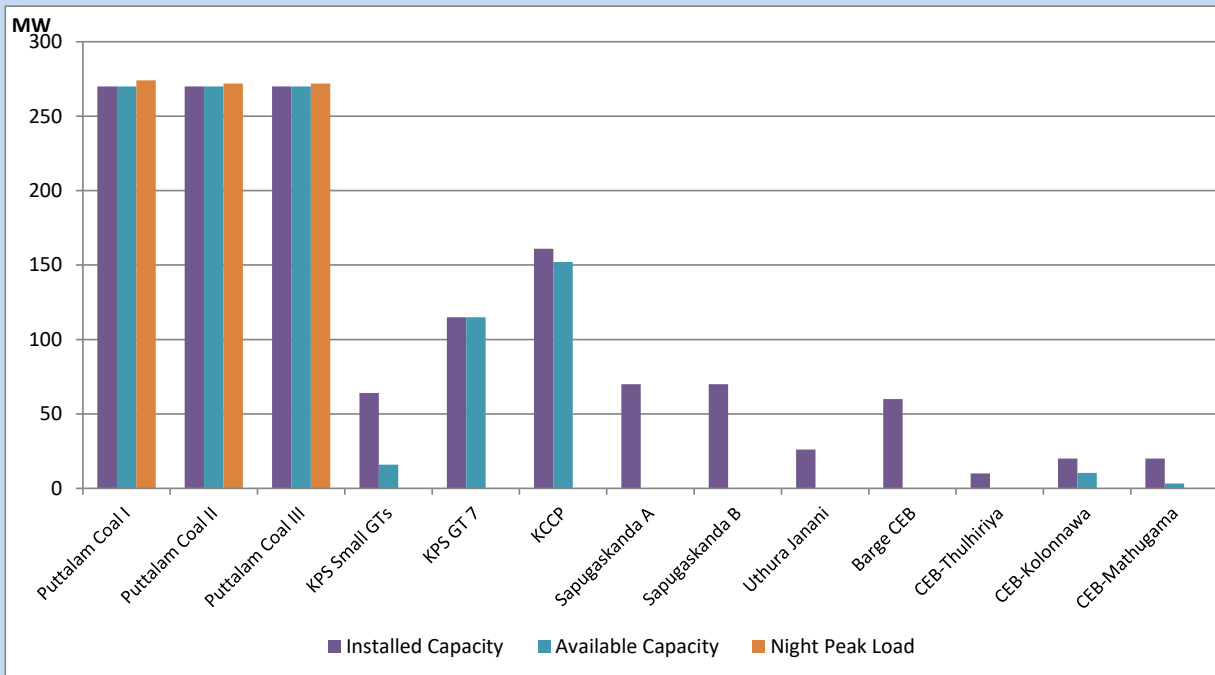
April 7, 2022



Available Generation is estimated based on plant availability at 6.00am on

April 8, 2022

CEB owned Thermal Plant Loading at the Night Peak



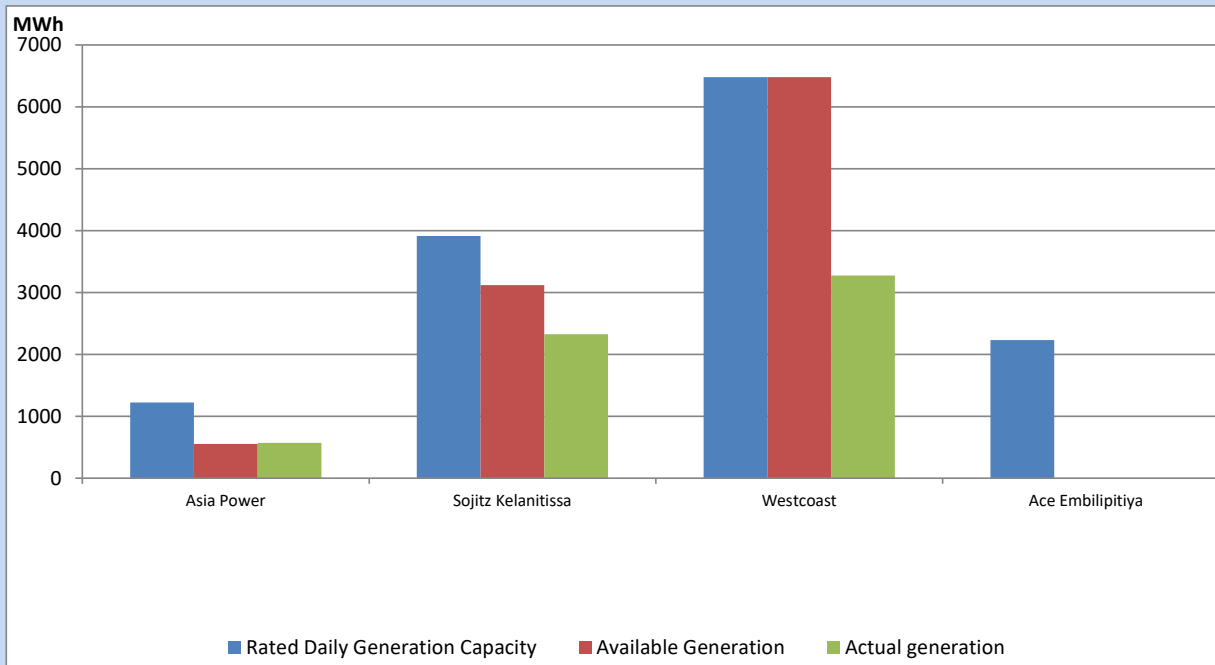
Note- Plant availability is recorded at 6.00 am on

April 8, 2022

IPP owned Thermal Plant Dispatch

April 7, 2022

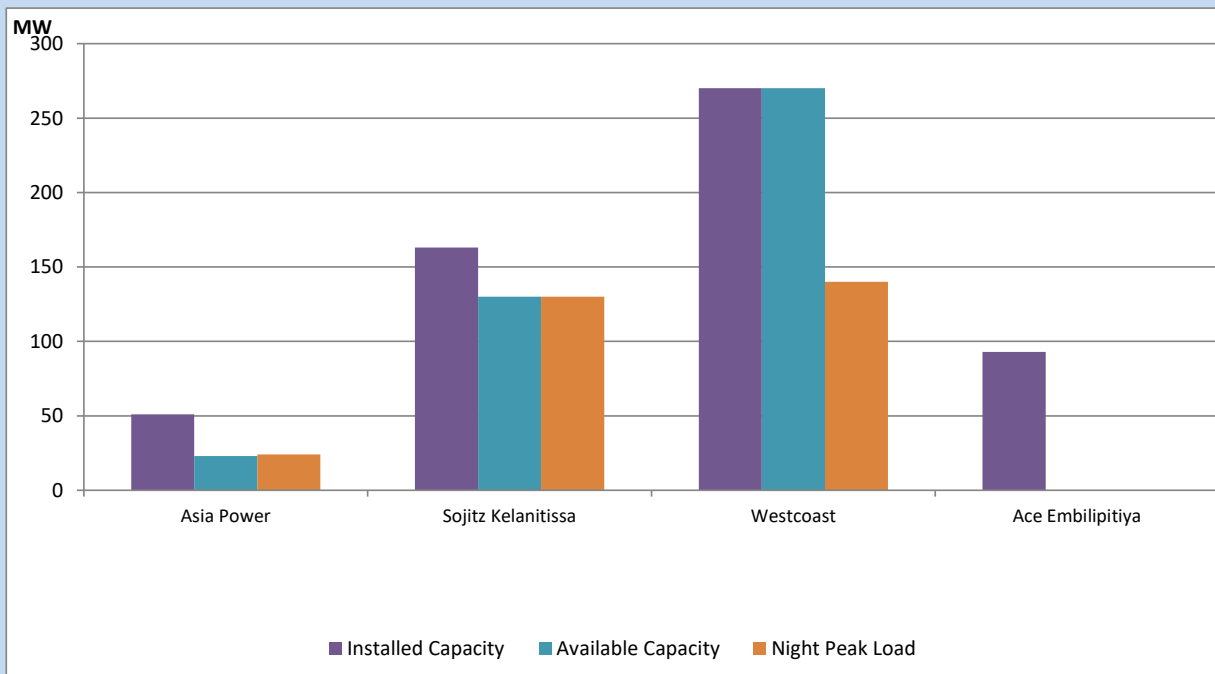
ACE Matara, Asia Power, V Power Pallekale, Vpower Galle, V Power Horana, Vpower Hambantota, Vpower Valachchena and Altaqa Mahiyanganaya are not available due to expiration of PPAs



Available Generation is estimated based on plant availability at 6.00am on

April 8, 2022

IPP owned Thermal Plant Loading at the Night Peak

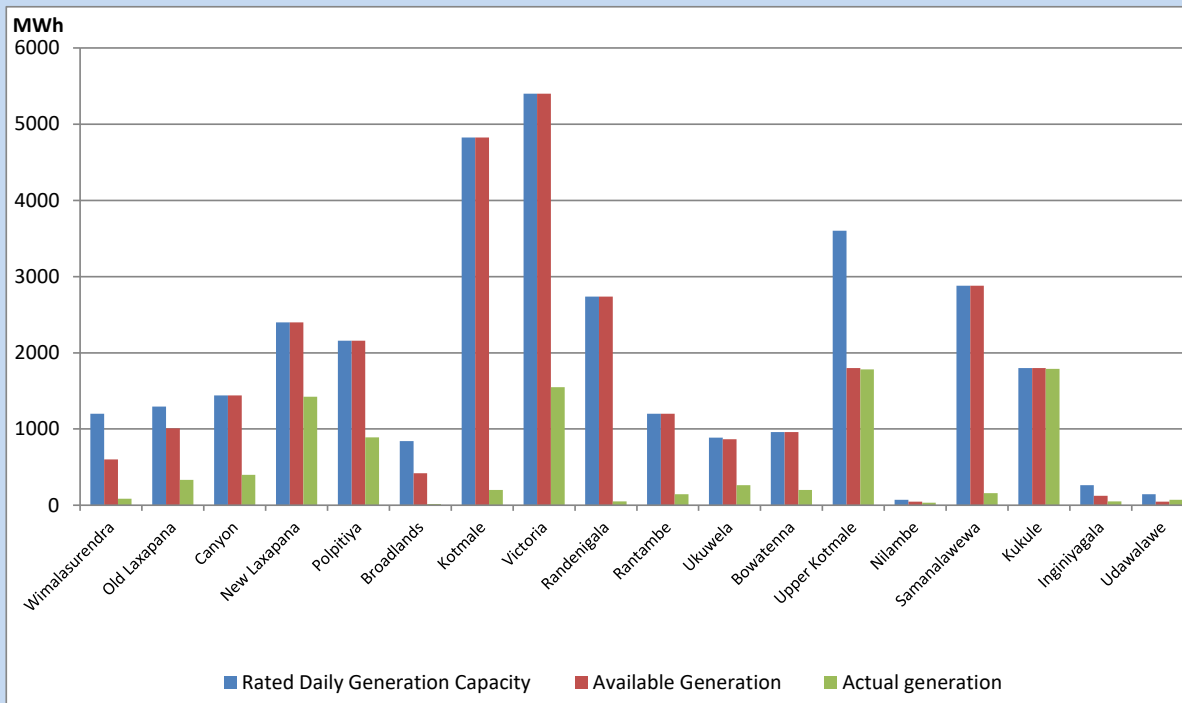


Note- Plant availability is recorded at 6.00 am on

April 8, 2022

Major Hydro Plant Dispatch

April 7, 2022

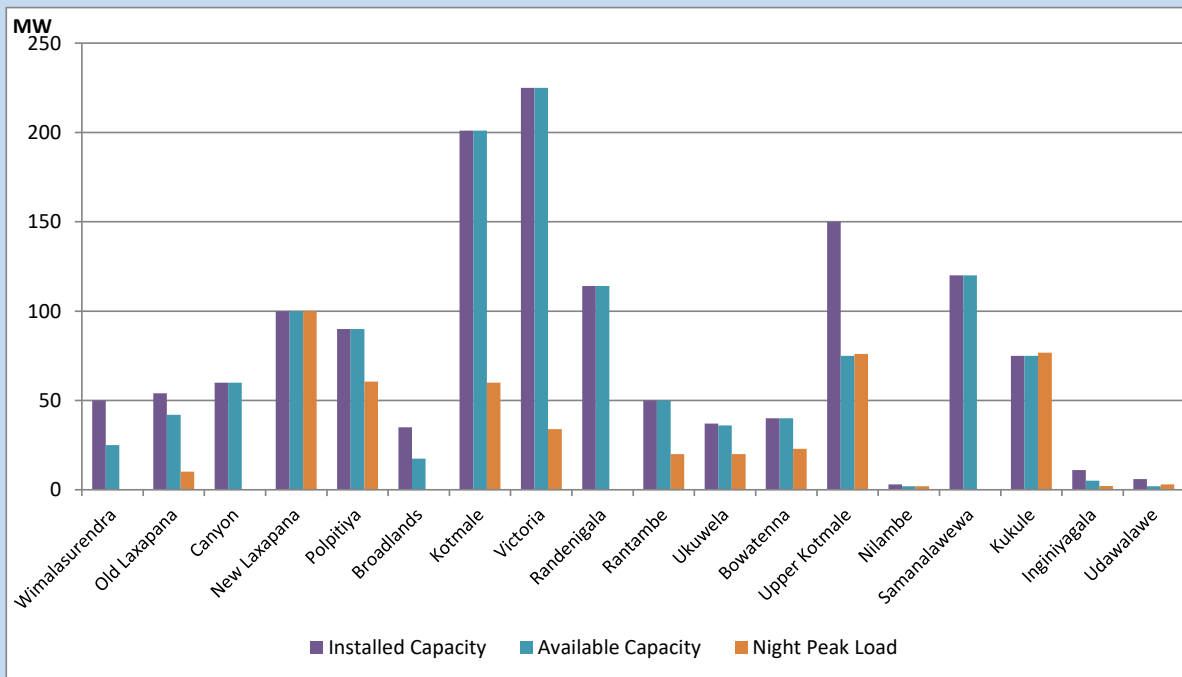


Available Generation is estimated based on plant availability at 6.00am on
Broadlands power plant is operating in the Commissioning Stage

April 8, 2022

Major Hydro Plant Loading at Night Peak

April 7, 2022



Note- Plant availability is recorded at 6.00 am on
Broadlands power plant is operating in the Commissioning Stage

April 8, 2022

Summary of Major Plant performance

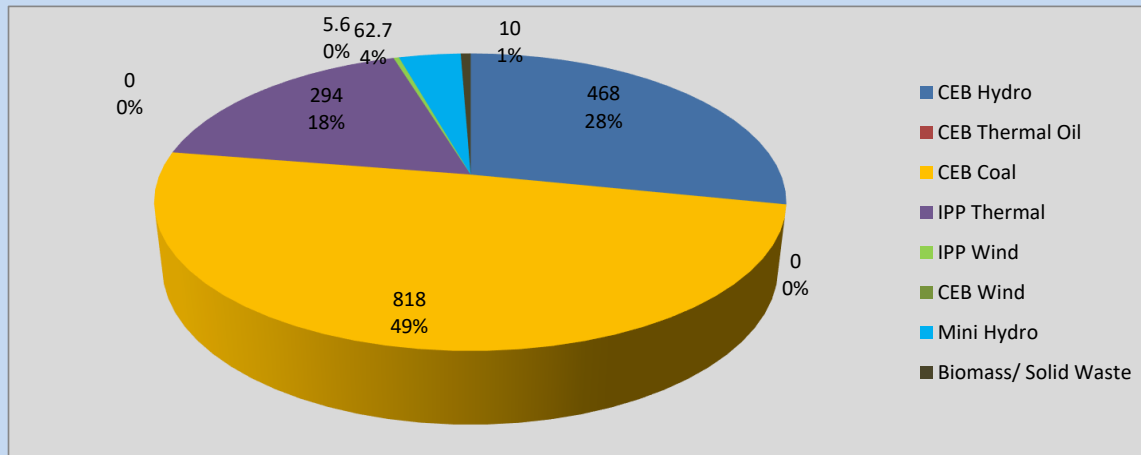
Plant	Installed Capacity	Plant Availability	Night peak Load	Plant Dispatch
	(MW)	(MW)	(MW)	(MWh)
Wimalasurendra	50	25	0	85
Old Laxapana	54	42	10	332
Canyon	60	60	0	399
New Laxapana	100	100	100	1,422
Polpitiya	90	90	61	890
Broadlands	35	18	0	17
Kotmale	201	201	60	200
Victoria	225	225	34	1,548
Randenigala	114	114	0	51
Rantambe	50	50	20	143
Ukuwela	37	36	20	262
Bowatenna	40	40	23	199
Upper Kotmale	150	75	76	1,782
Nilambe	3	2	2	31
Samanalawewa	120	120	0	157
Kukule	75	75	77	1,791
Inginiyagala	11	5	2	51
Udawalawe	6	2	3	70
Puttalam Coal I	270	270	274	6,565
Puttalam Coal II	270	270	272	6,539
Puttalam Coal III	270	270	272	6,536
KPS Small GTs	64	16	0	0
KPS GT 7	115	115	0	0
KCCP	161	152	0	1,140
Sapugaskanda A	70	0	0	0
Sapugaskanda B	70	0	0	0
Uthura Janani	26	0	0	0
Barge CEB	60	0	0	0
CEB-Thulhiriya	10	0	0	0
CEB-Kolonnawa	20	10	0	190
CEB-Mathugama	20	3	0	18
Asia Power	51	23	24	571
Sojitz Kelanitissa	163	130	130	2,324
West Coast	270	270	140	3,275
ACE Embilipitiya	93	0	0	0
Total	3,424	2,809	1,678	38,517

Plant availability is the availability recorded at 6 am on

April 8, 2022

Contribution to the Night Peak in MW

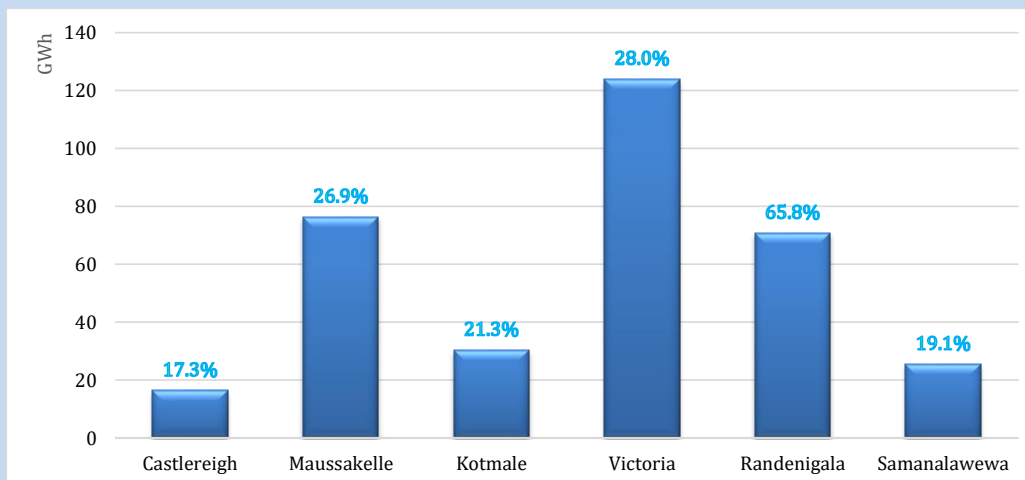
April 7, 2022



Night Peak*	1,657.9 MW
Day Peak	1,765.5 MW
Minimum Demand	1,430.8 MW

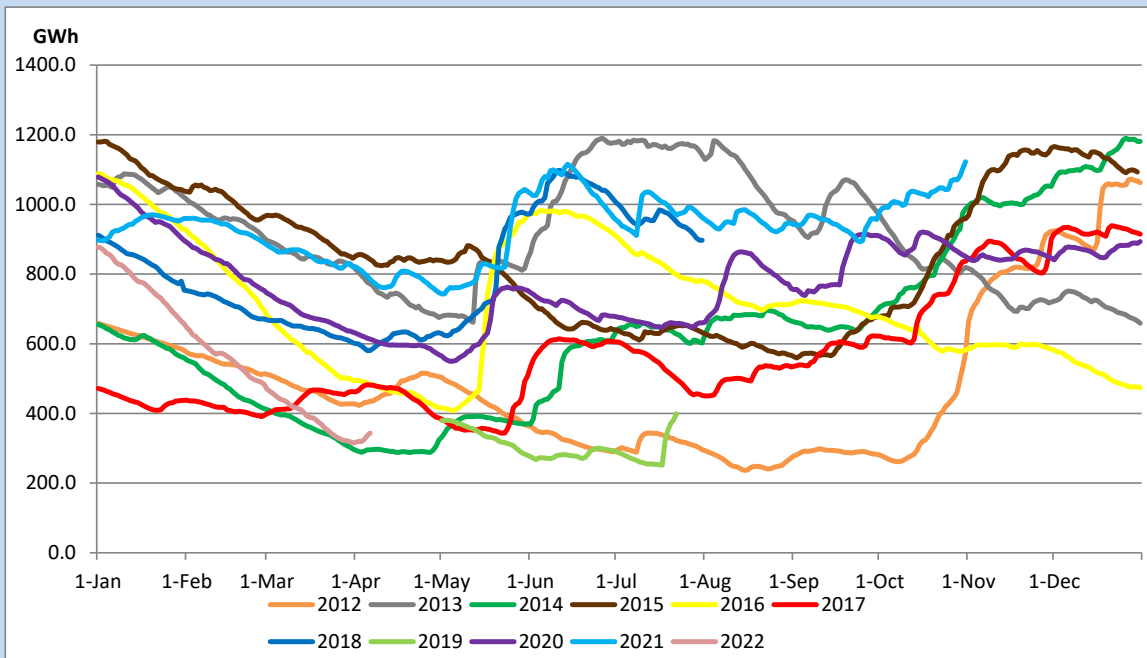
Above figures are excluding contribution from Roof Top Solar, 1MW solar, certain Wind plants and Mini Hydro plants

Reservoir Levels - as at 06.00 Hr on April 8, 2022



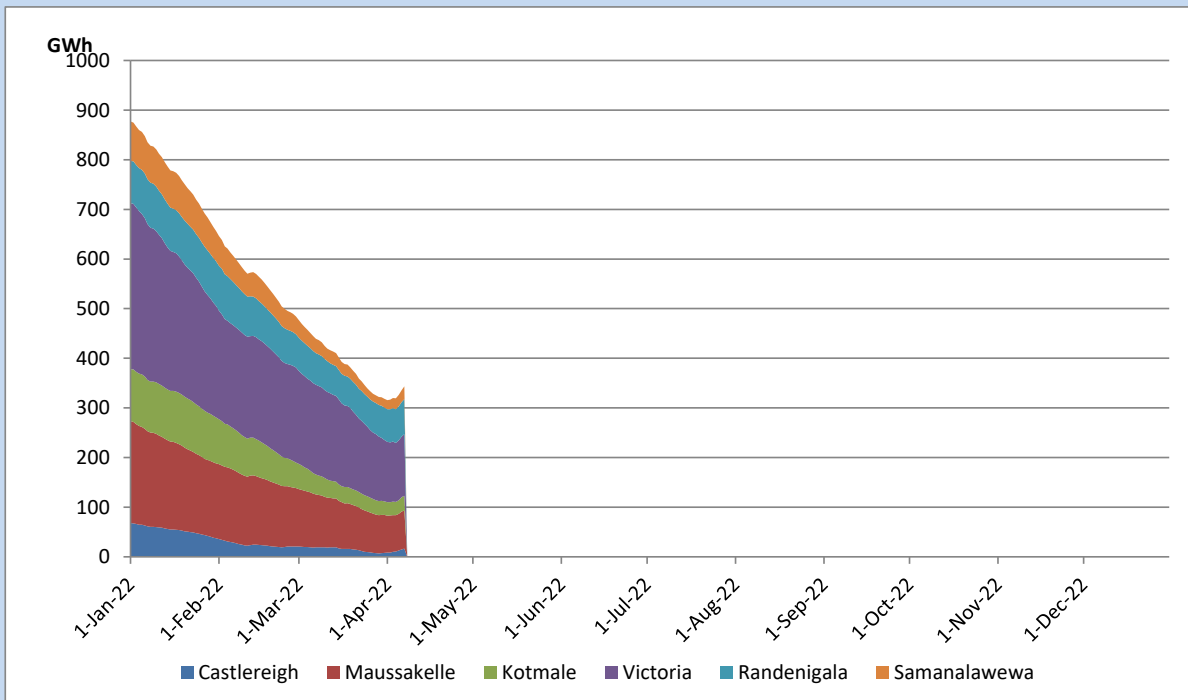
Total Reservoir Level	343.5 GWh
% of Total capacity	29.7%

Comparison of Total Reservoir Storage Levels with Past Years

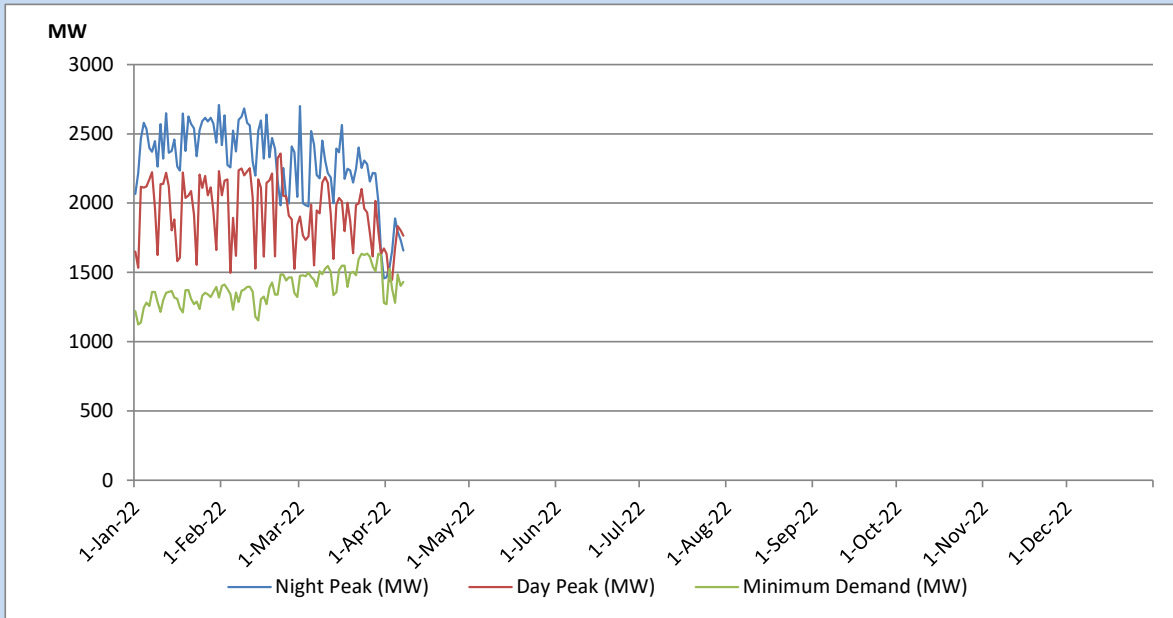


Data for 2018 and 2019 are only available for part of year.

Variation of Major Hydro Reservoir Levels in the current year (GWh)



Variation of Demand during the current year

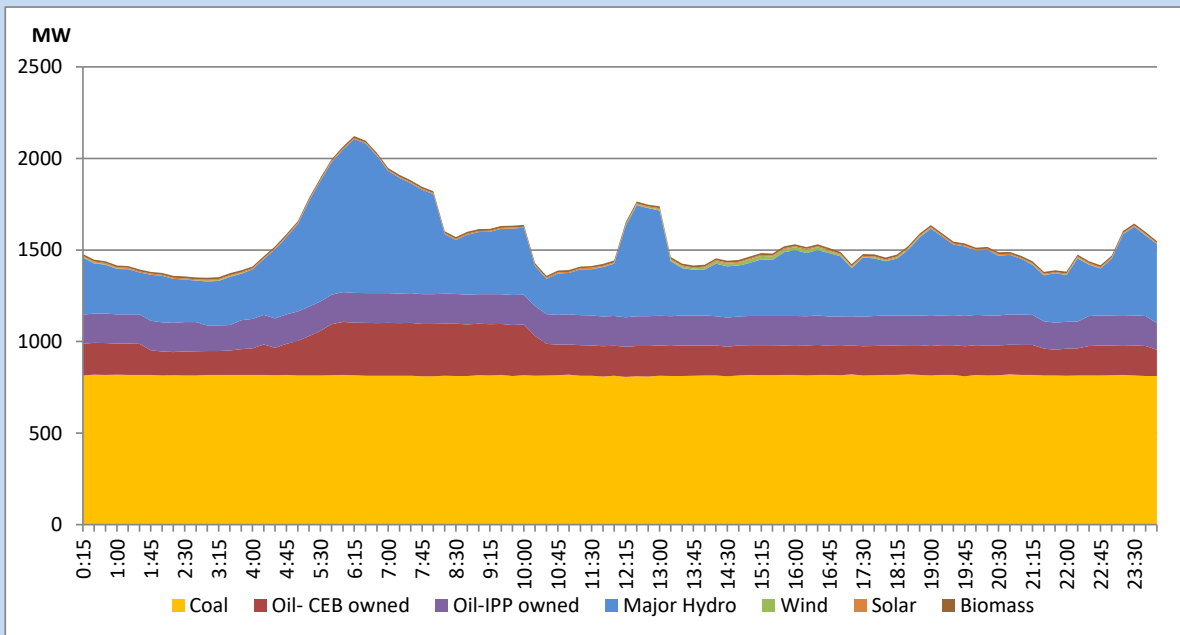


The above figures are excluding contribution from Roof Top Solar, 1MW solar, certain Wind plants and Mini Hydro plants

Daily Load Curve of the Previous day

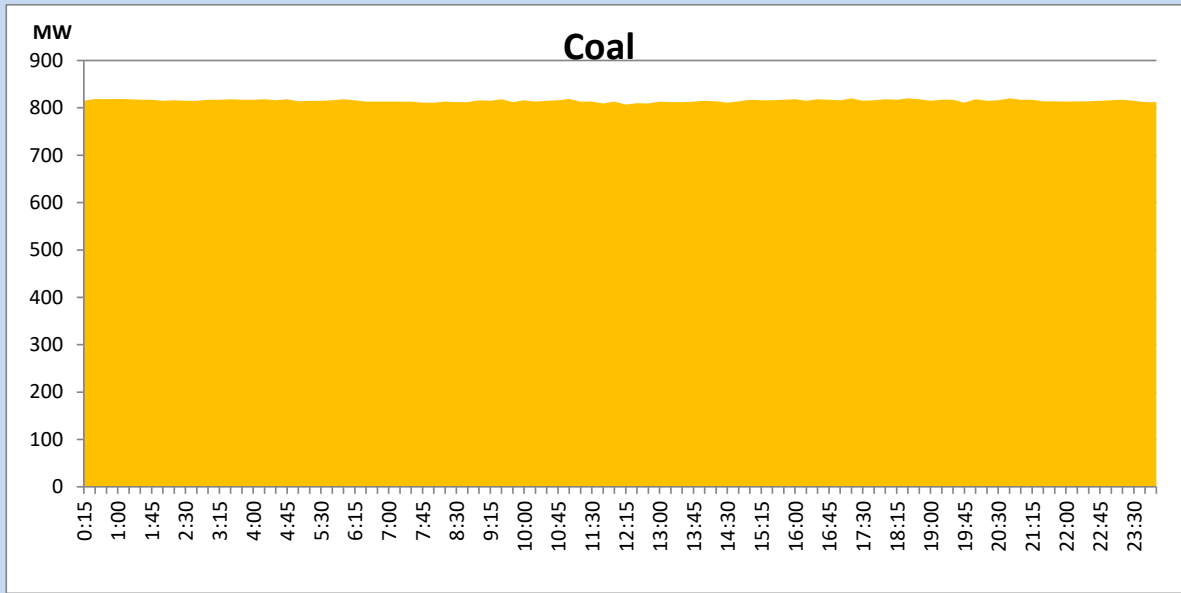
April 6, 2022

Solar and wind data is based on Telemetered Power Stations only



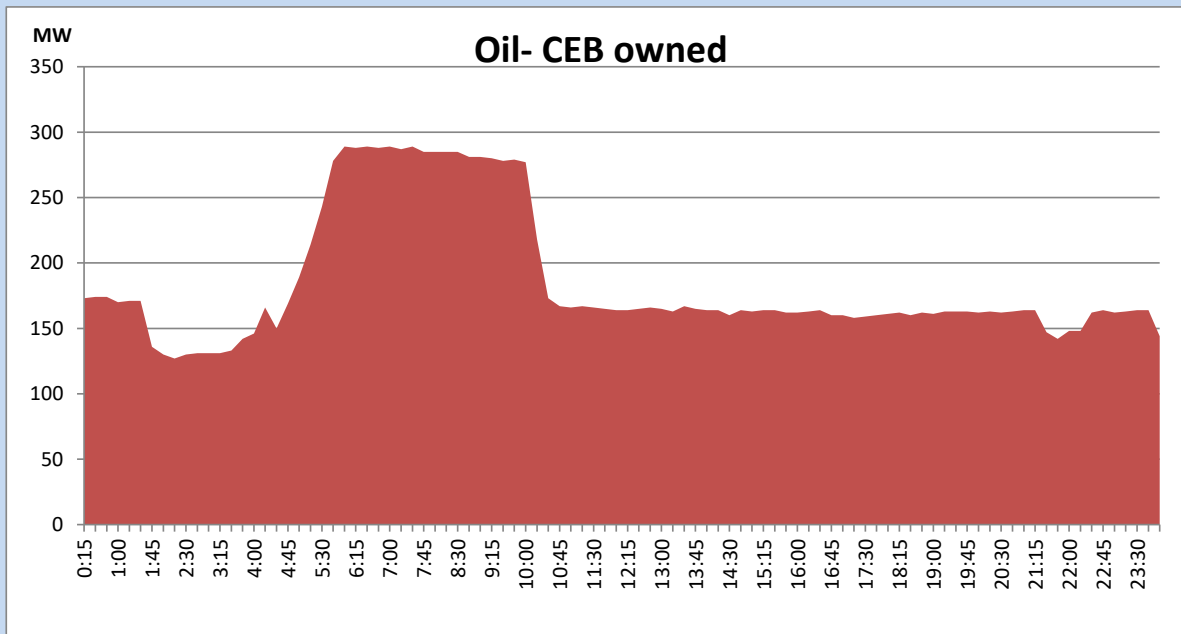
Coal Generation during the Previous day

April 6, 2022



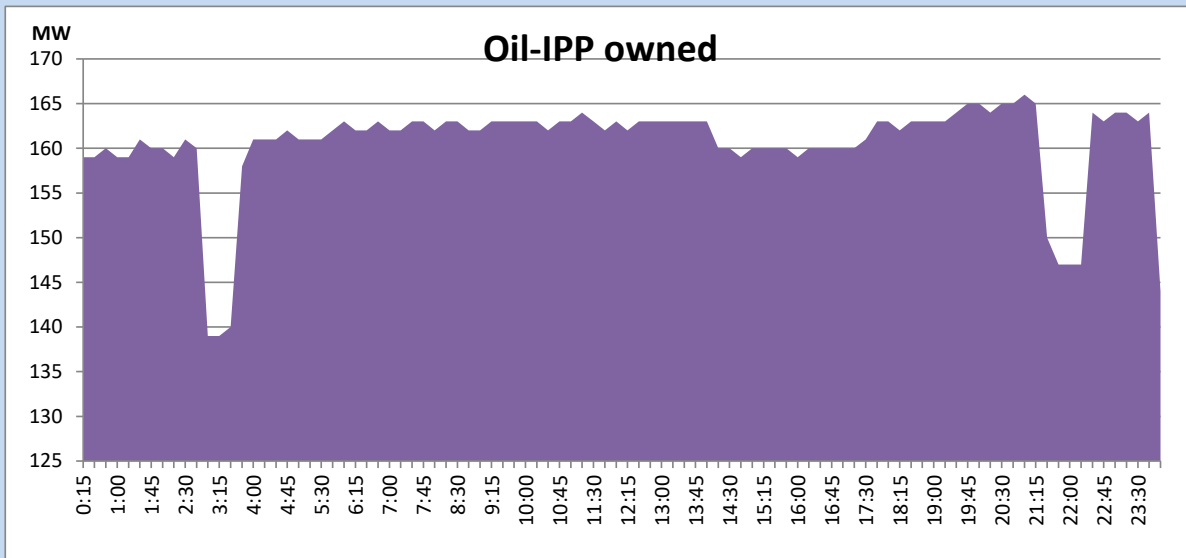
CEB Oil Plant Generation during the Previous day

April 6, 2022



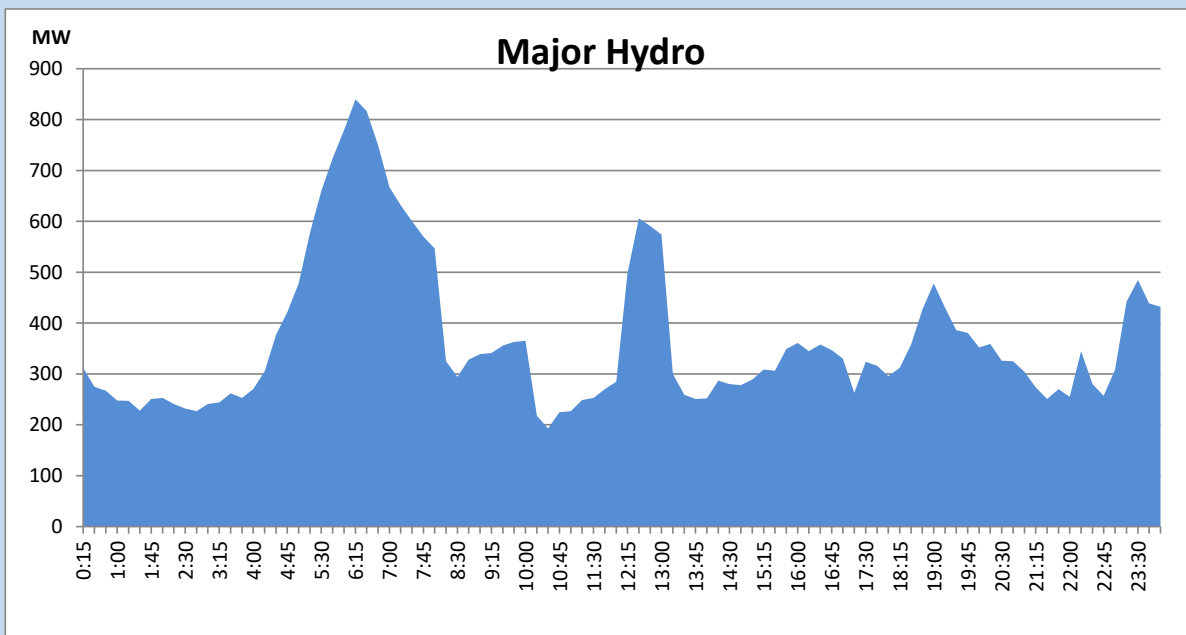
IPP Oil Plant Generation during the Previous day

April 6, 2022



Major Hydro Generation during the Previous day

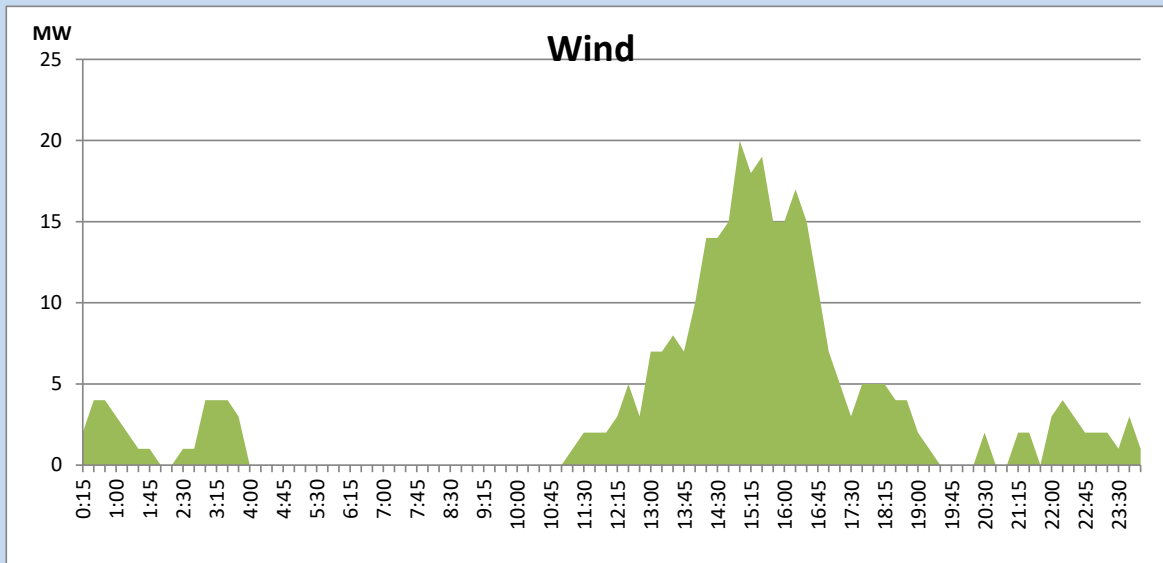
April 6, 2022



Wind Generation during the Previous day

April 6, 2022

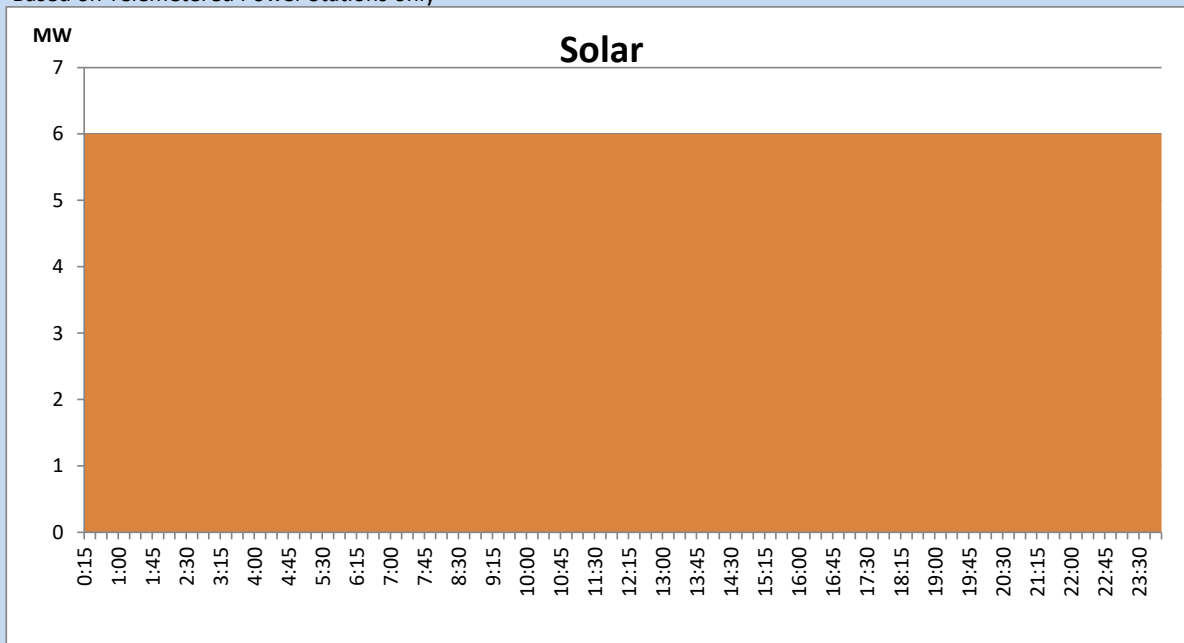
Based on Telemetered Power Stations only



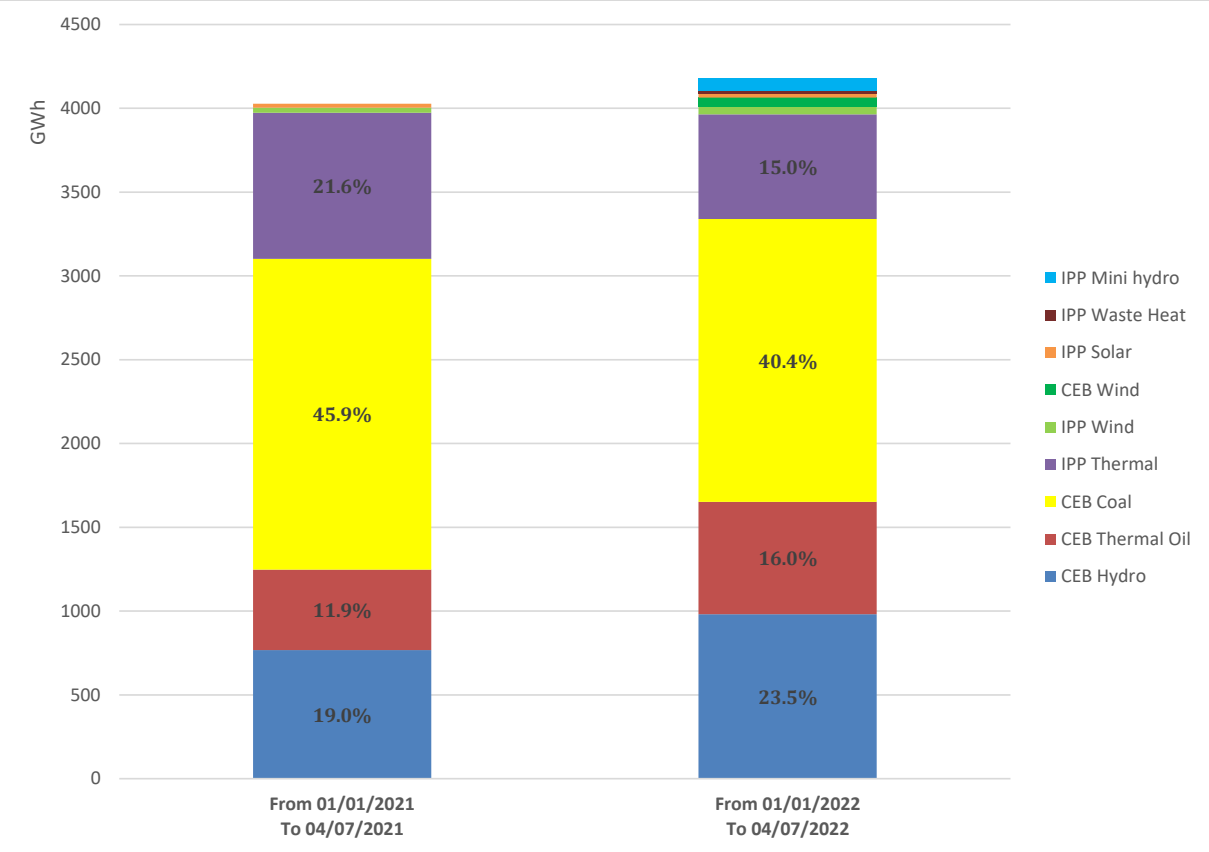
Solar Generation during the Previous day

April 6, 2022

Based on Telemetered Power Stations only



Cumulative Dispatch Comparison with Last Year



Thermal Plant Fuel types

Power Station	Primary Fuel
CEB Thermal	
Sapugaskanda 1	Heavy Fuel
Sapugaskanda 2	Heavy Fuel
Kelanitissa Small Gas Turbines	Auto Diesel
GT 7 - Kelanitissa	Auto Diesel
Kelanitissa CCY	Naphtha & Diesel
Lakvijaya 1	Coal
Lakvijaya 2	Coal
Lakvijaya 3	Coal
Uthuru Janani	Heavy Fuel
Barge CEB	Heavy Fuel

Power Station	Primary Fuel
Private Thermal	
Sojitz - Kelanitissa	Auto Diesel
West Coast	Heavy Fuel

Major Incidents during the day -as reported by CEB morning of

April 8, 2022

- 1) Rotational manual load shedding was carried out from 06:00hrs to 23:00hrs.
- 2) Polp -Kosg cct tripped from Polp end and A/R from Kosg end at 16:18 hrs. At the same time Broadland -Seetha cct tripped from Broadland.
Both ccts restored at 16:36 hrs.