

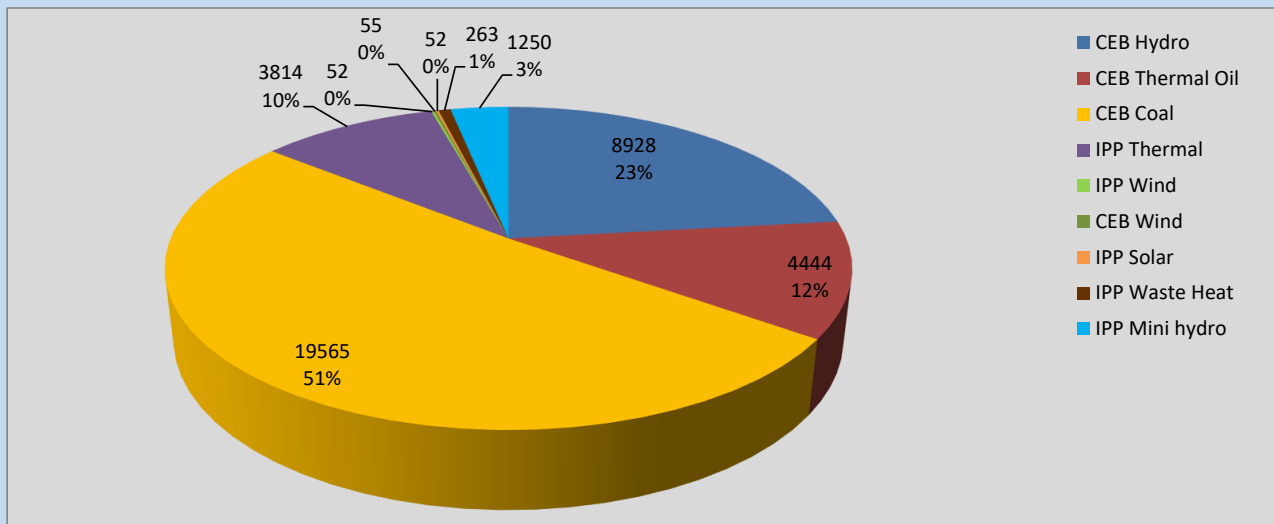
# Generation and Reservoirs Statistics

April 6, 2022



PUBLIC UTILITIES COMMISSION OF SRI LANKA

## Daily Generation Mix in MWh



**Total Generation** **38,621 MWh**

Note: Above data is excluding contribution from Roof Top Solar, 1MW Solar and certain Mini Hydro plants

## Cumulative Dispatch

Note: Following data is Excluding contribution from Roof Top Solar, 1MW solar and Mini Hydro plants

### For Current Month

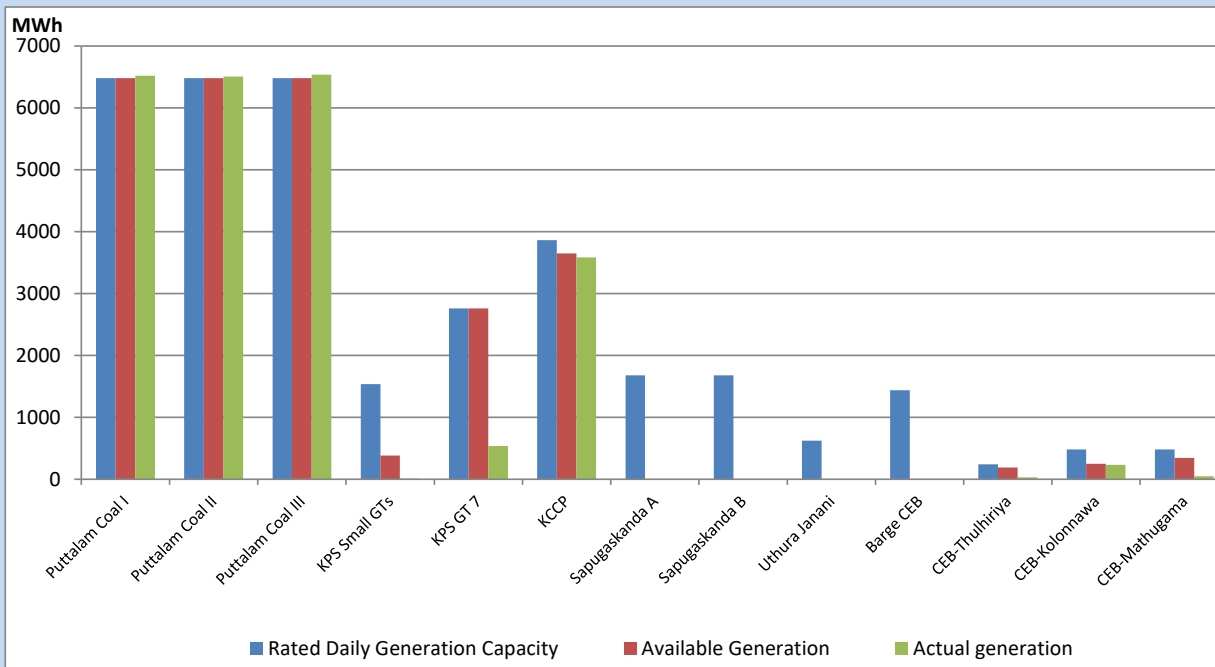
Category	Dispatch (GWh)	Percentage
CEB Hydro	42.82	19.08%
CEB Thermal Oil	27.21	12.12%
CEB Coal	117.45	52.32%
IPP Thermal	26.03	11.60%
SPP Wind	1.26	0.56%
CEB Wind	1.49	0.66%
SPP Solar	1.62	0.72%
SPP Solid Waste	1.23	0.55%
Mini Hydro	5.36	2.39%
<b>Total</b>	<b>224.47</b>	

### For Current Year

Category	Dispatch (GWh)	Percentage
CEB Hydro	972.7	23.48%
CEB Thermal Oil	668.4	16.13%
CEB Coal	1,667.9	40.26%
IPP Thermal	618.9	14.94%
SPP Wind	43.7	1.05%
CEB Wind	55.3	1.33%
SPP Solar	25.2	0.61%
SPP Solid Waste	19.0	0.46%
Mini Hydro	71.8	1.73%
<b>Total</b>	<b>4,142.6</b>	

## CEB owned Thermal Plant Dispatch

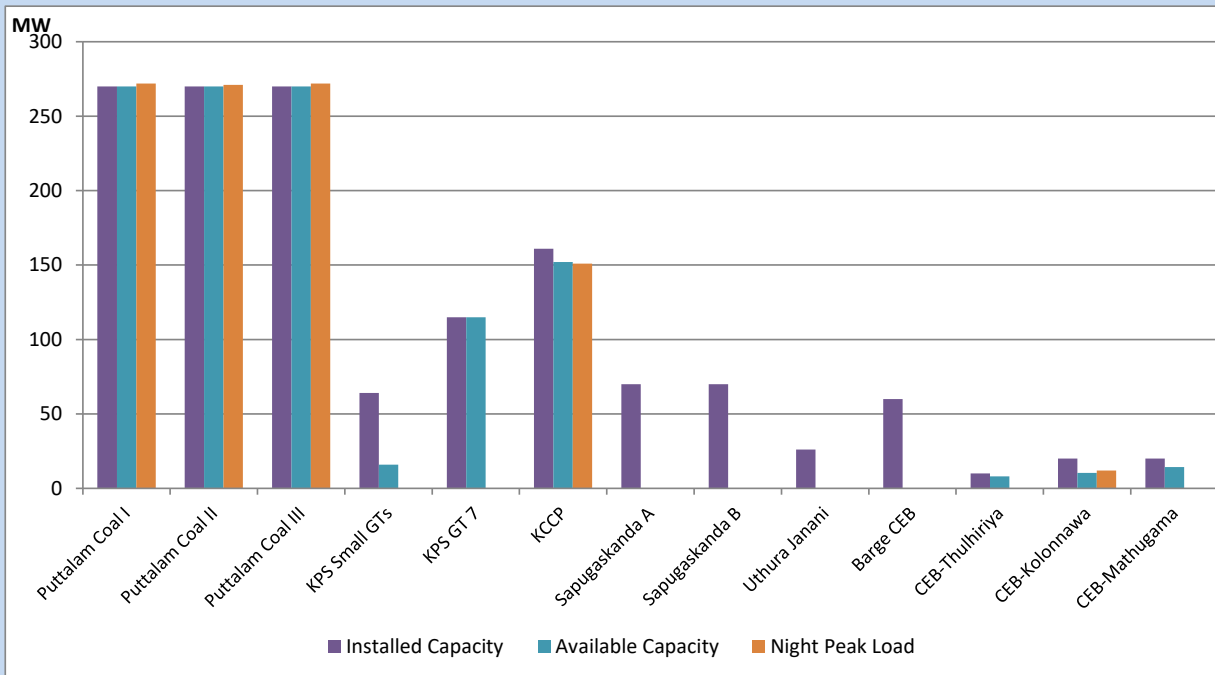
April 6, 2022



Available Generation is estimated based on plant availability at 6.00am on

April 7, 2022

## CEB owned Thermal Plant Loading at the Night Peak



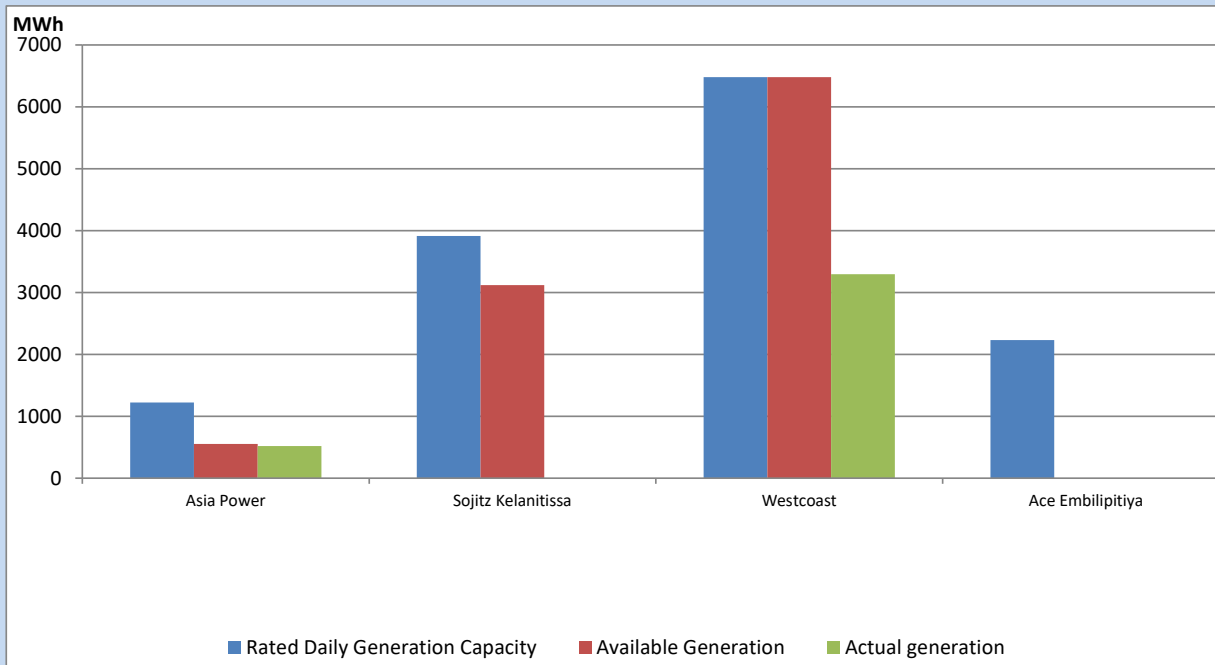
Note- Plant availability is recorded at 6.00 am on

April 7, 2022

## IPP owned Thermal Plant Dispatch

April 6, 2022

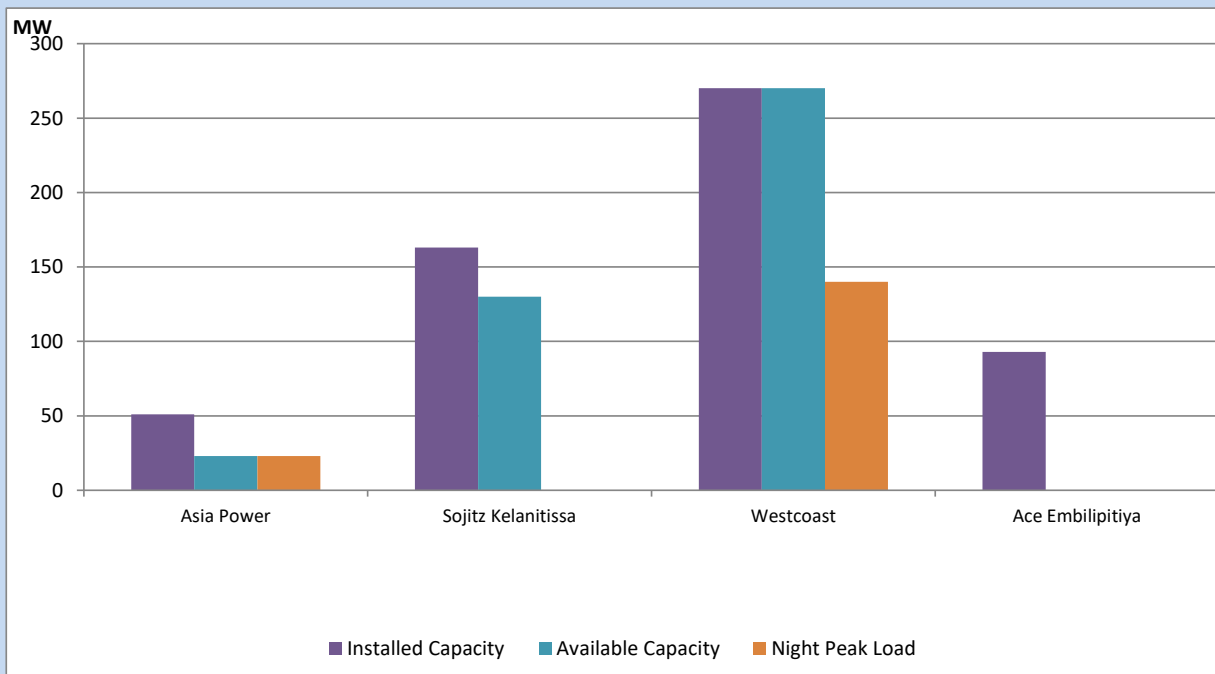
ACE Matara, Asia Power, V Power Pallekale, Vpower Galle, V Power Horana, Vpower Hambantota, Vpower Valachchena and Altaqa Mahiyanganaya are not available due to expiration of PPAs



Available Generation is estimated based on plant availability at 6.00am on

April 7, 2022

## IPP owned Thermal Plant Loading at the Night Peak

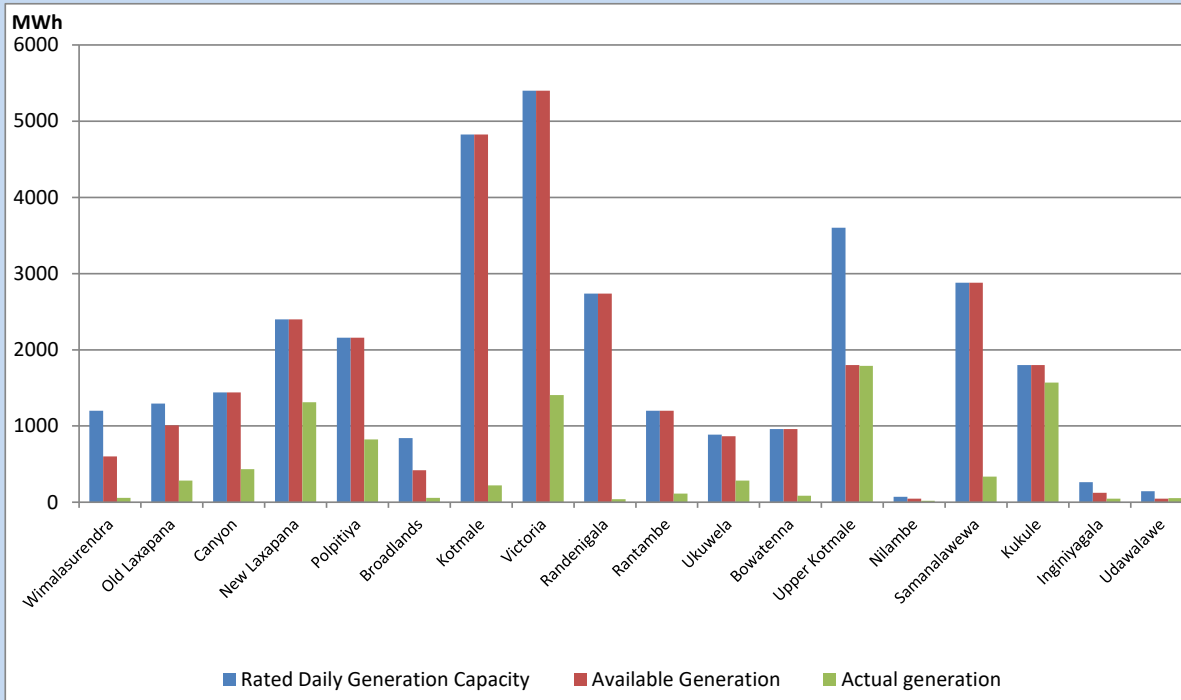


Note- Plant availability is recorded at 6.00 am on

April 7, 2022

## Major Hydro Plant Dispatch

April 6, 2022

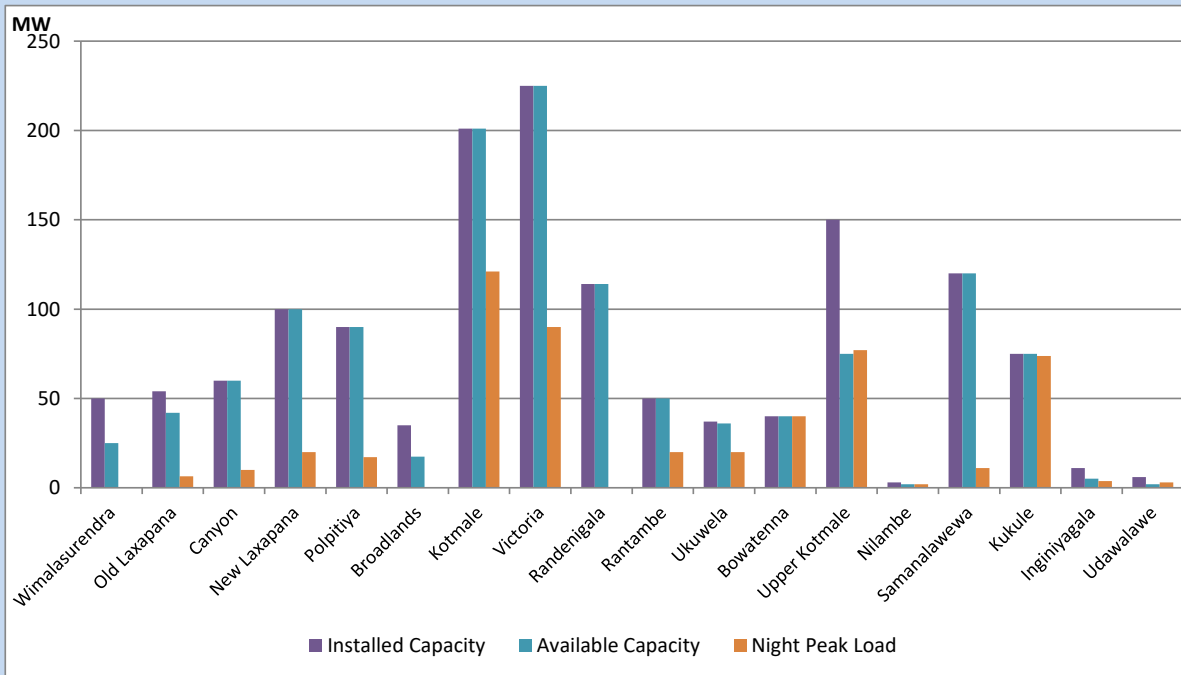


Available Generation is estimated based on plant availability at 6.00am on April 7, 2022  
 Broadlands power plant is operating in the Commissioning Stage

April 7, 2022

## Major Hydro Plant Loading at Night Peak

April 6, 2022



Note- Plant availability is recorded at 6.00 am on April 7, 2022  
 Broadlands power plant is operating in the Commissioning Stage

## Summary of Major Plant performance

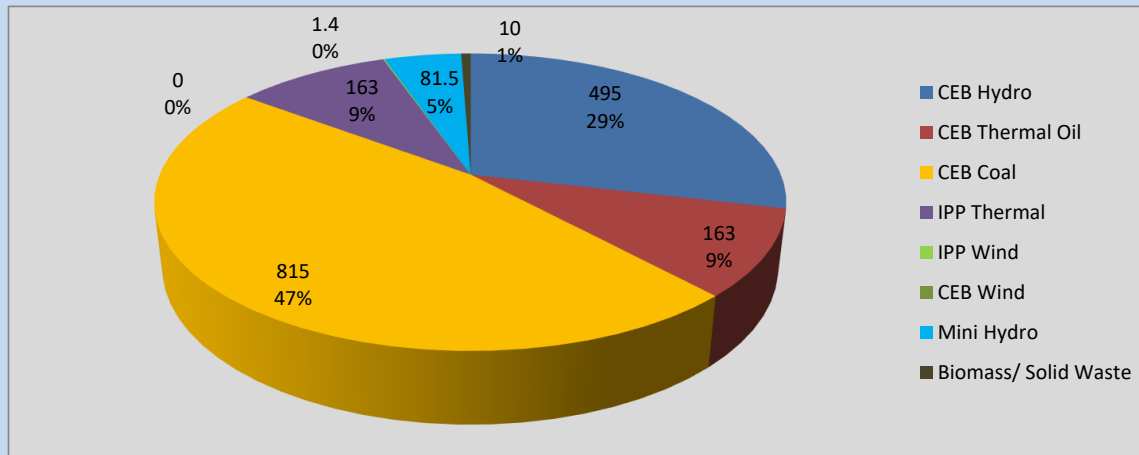
Plant	Installed Capacity	Plant Availability	Night peak Load	Plant Dispatch
	(MW)	(MW)	(MW)	(MWh)
Wimalasurendra	50	25	0	57
Old Laxapana	54	42	6	285
Canyon	60	60	10	435
New Laxapana	100	100	20	1,313
Polpitiya	90	90	17	824
Broadlands	35	18	0	57
Kotmale	201	201	121	220
Victoria	225	225	90	1,406
Randenigala	114	114	0	38
Rantambe	50	50	20	114
Ukuwela	37	36	20	282
Bowatenna	40	40	40	84
Upper Kotmale	150	75	77	1,790
Nilambe	3	2	2	20
Samanalawewa	120	120	11	335
Kukule	75	75	74	1,568
Inginiyagala	11	5	4	48
Udawalawe	6	2	3	52
Puttalam Coal I	270	270	272	6,518
Puttalam Coal II	270	270	271	6,508
Puttalam Coal III	270	270	272	6,539
KPS Small GTs	64	16	0	9
KPS GT 7	115	115	0	538
KCCP	161	152	151	3,586
Sapugaskanda A	70	0	0	0
Sapugaskanda B	70	0	0	0
Uthura Janani	26	0	0	0
Barge CEB	60	0	0	0
CEB-Thulhiriya	10	8	0	32
CEB-Kolonnawa	20	10	12	232
CEB-Mathugama	20	14	0	47
Asia Power	51	23	23	520
Sojitz Kelanitissa	163	130	0	0
West Coast	270	270	140	3,294
ACE Embilipitiya	93	0	0	0
<b>Total</b>	<b>3,424</b>	<b>2,828</b>	<b>1,755</b>	<b>38,621</b>

Plant availability is the availability recorded at 6 am on

April 7, 2022

## Contribution to the Night Peak in MW

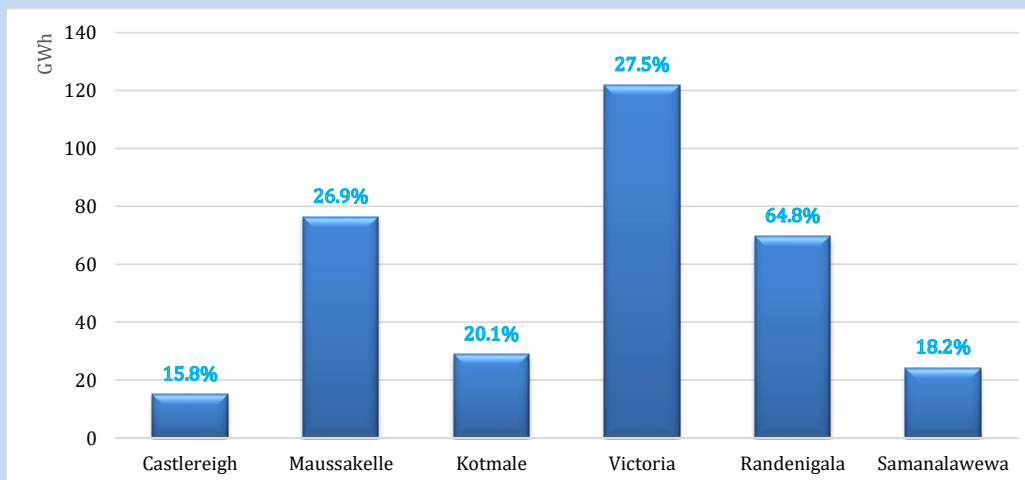
April 6, 2022



Night Peak*	1,735.3 MW
Day Peak	1,803.2 MW
Minimum Demand	1,403.6 MW

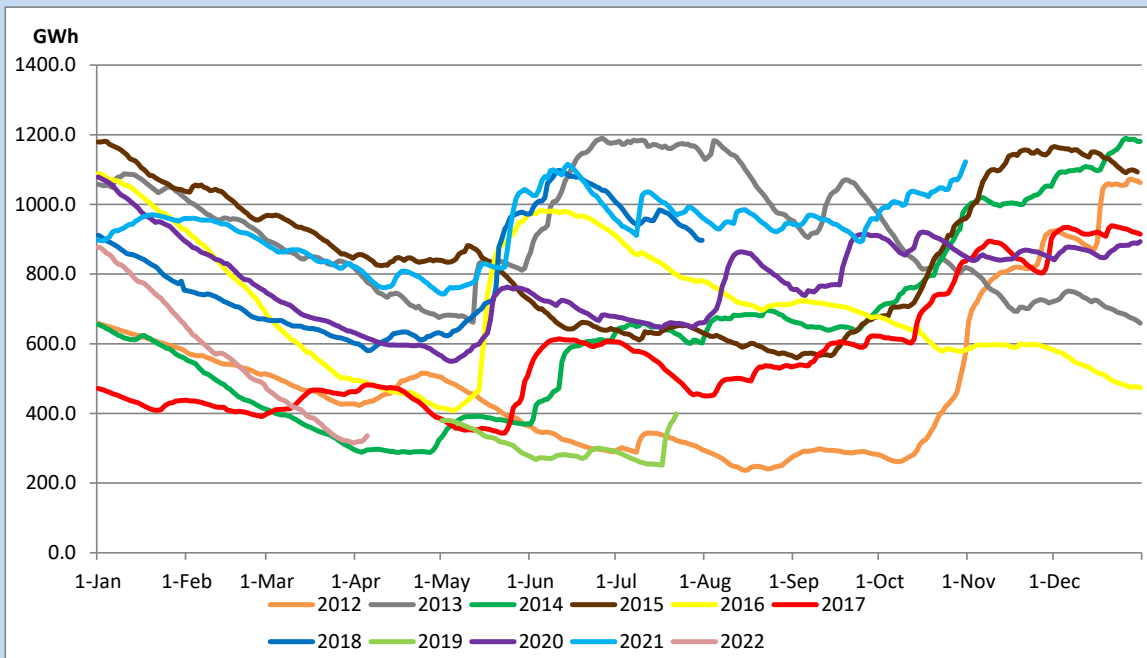
Above figures are excluding contribution from Roof Top Solar, 1MW solar, certain Wind plants and Mini Hydro plants

## Reservoir Levels - as at 06.00 Hr on April 7, 2022



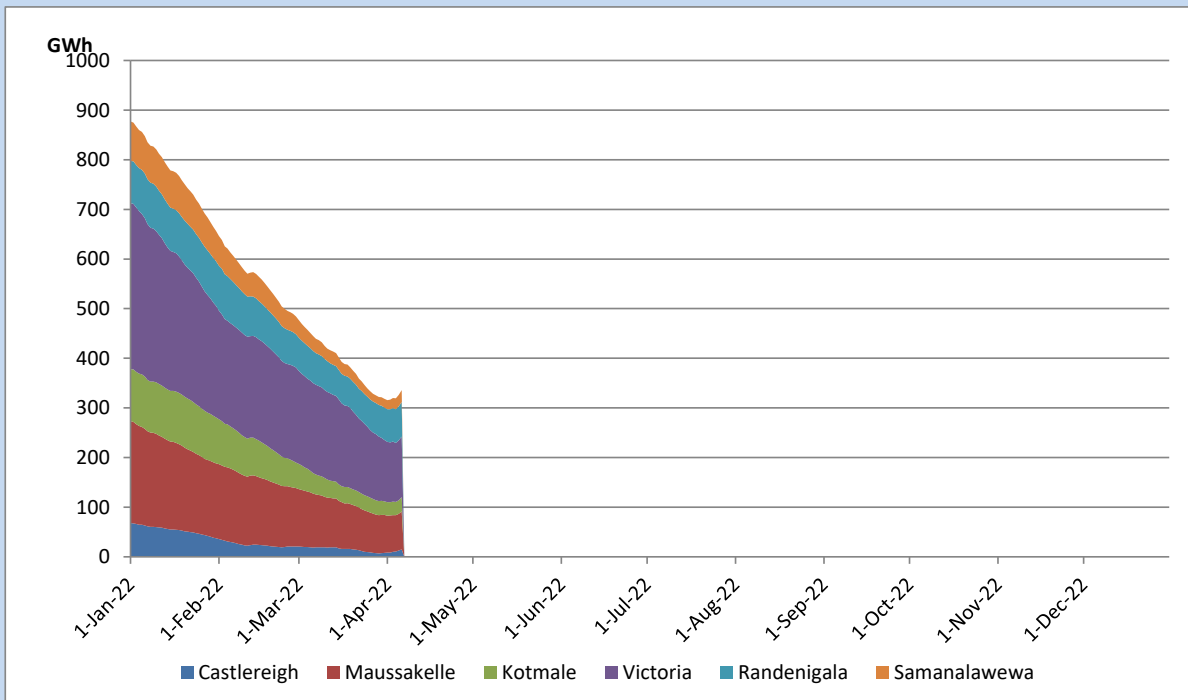
Total Reservoir Level	336.1 GWh
% of Total capacity	28.9%

## Comparison of Total Reservoir Storage Levels with Past Years



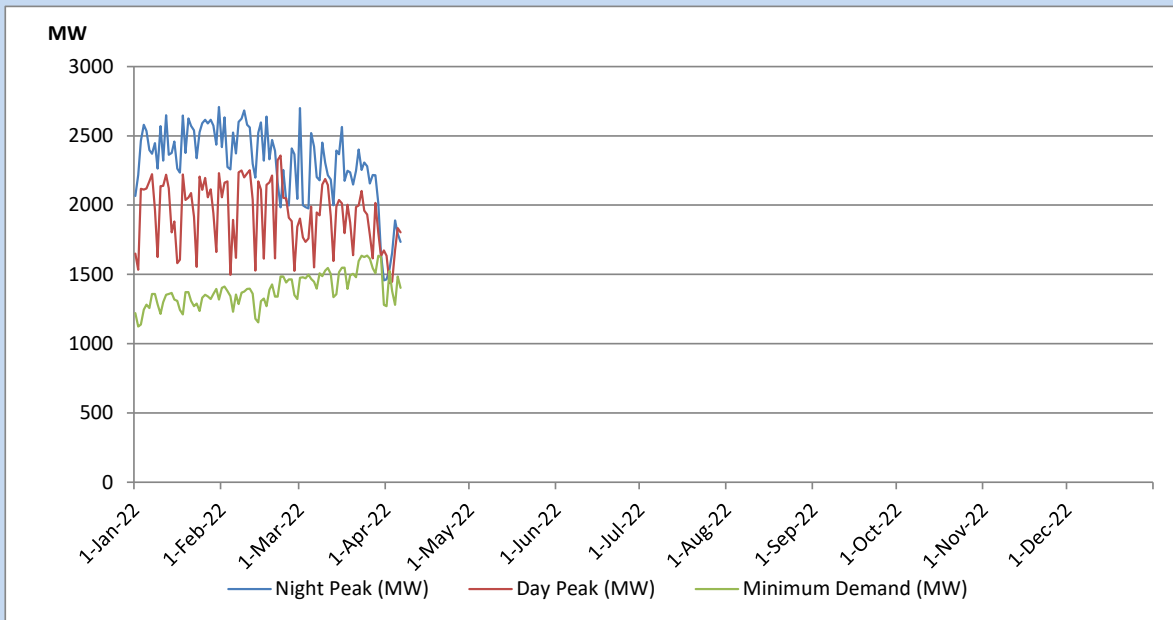
Data for 2018 and 2019 are only available for part of year.

## Variation of Major Hydro Reservoir Levels in the current year (GWh)





## Variation of Demand during the current year

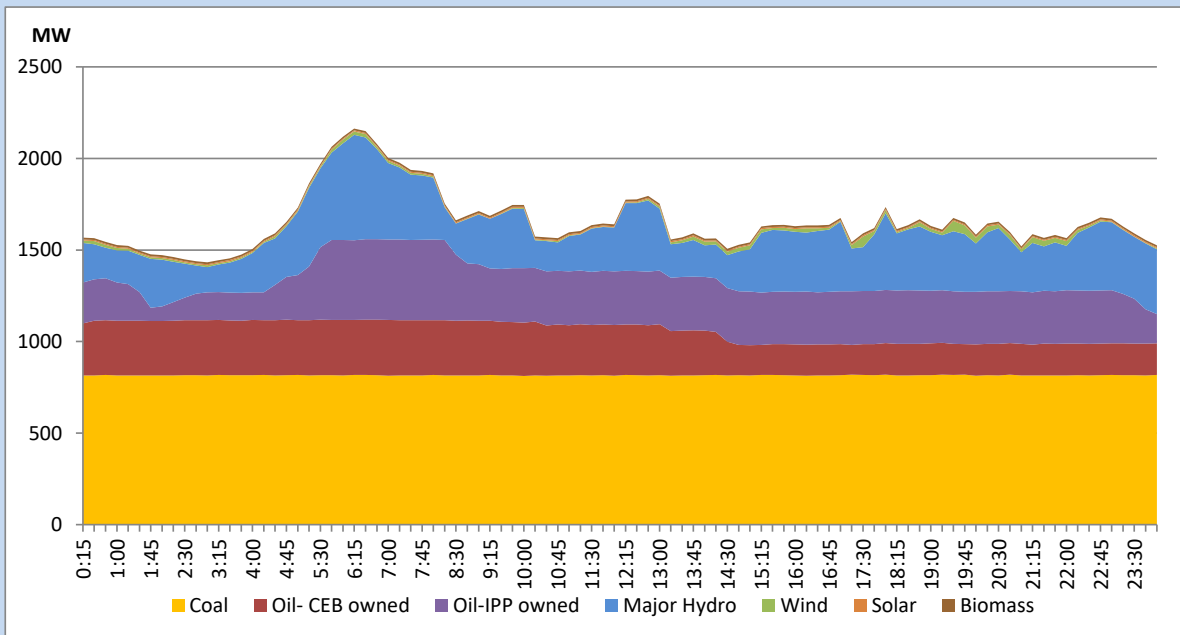


The above figures are excluding contribution from Roof Top Solar, 1MW solar, certain Wind plants and Mini Hydro plants

## Daily Load Curve of the Previous day

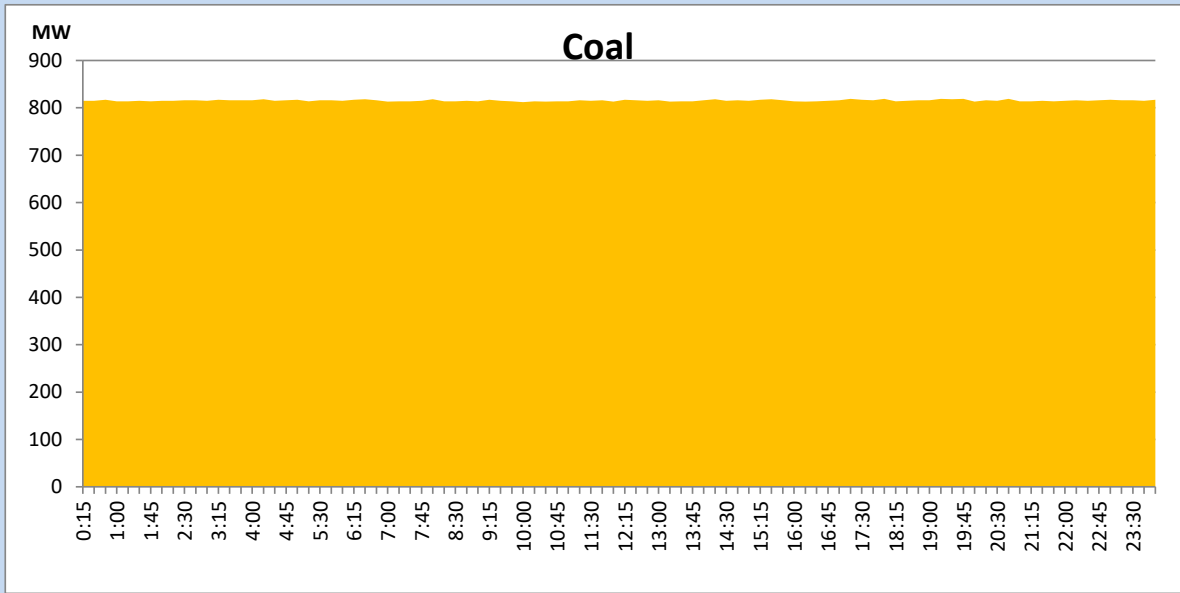
April 5, 2022

Solar and wind data is based on Telemetered Power Stations only



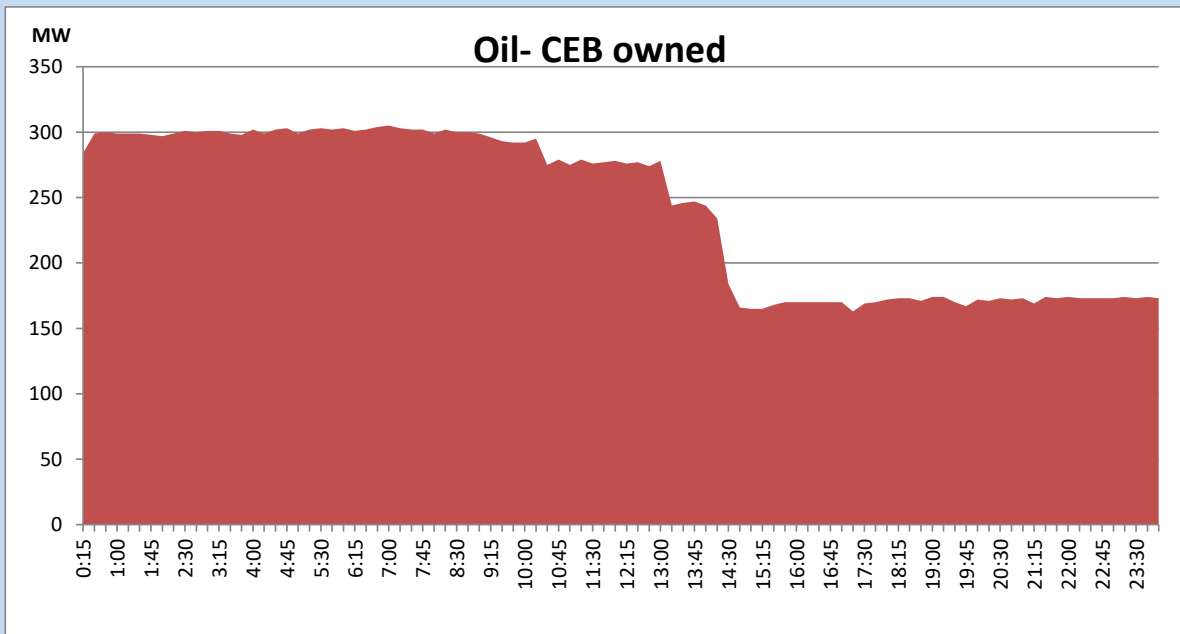
## Coal Generation during the Previous day

April 5, 2022



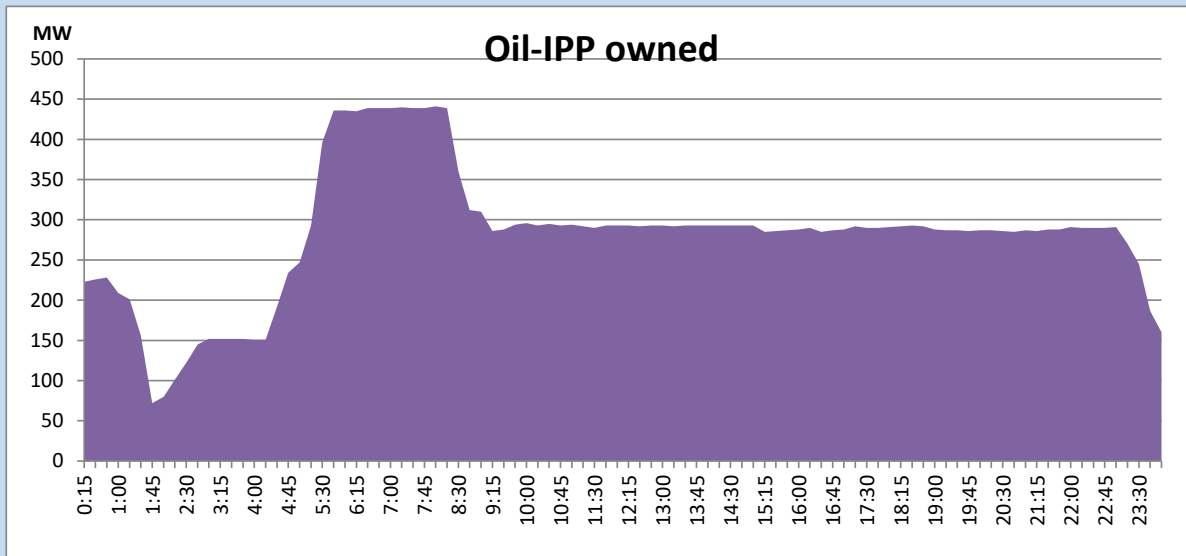
## CEB Oil Plant Generation during the Previous day

April 5, 2022



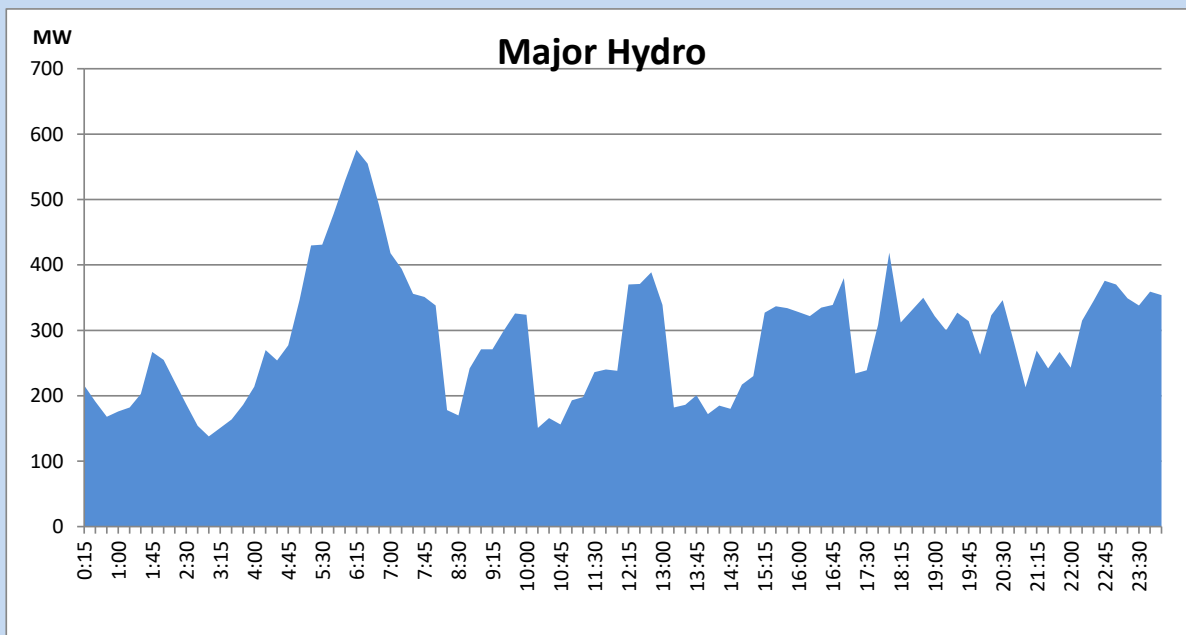
## IPP Oil Plant Generation during the Previous day

April 5, 2022



## Major Hydro Generation during the Previous day

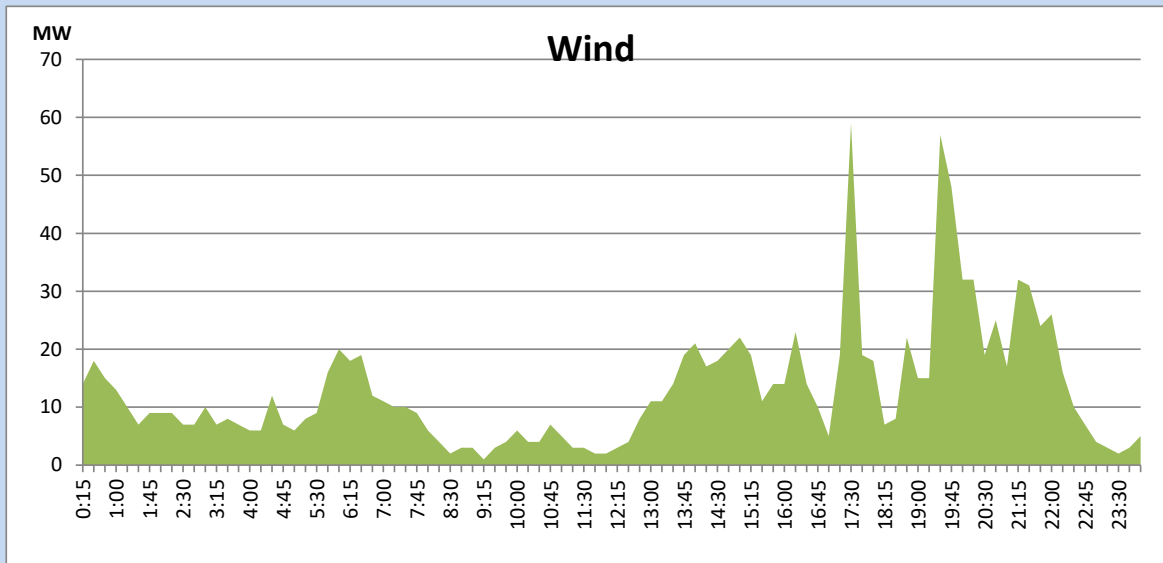
April 5, 2022



## Wind Generation during the Previous day

April 5, 2022

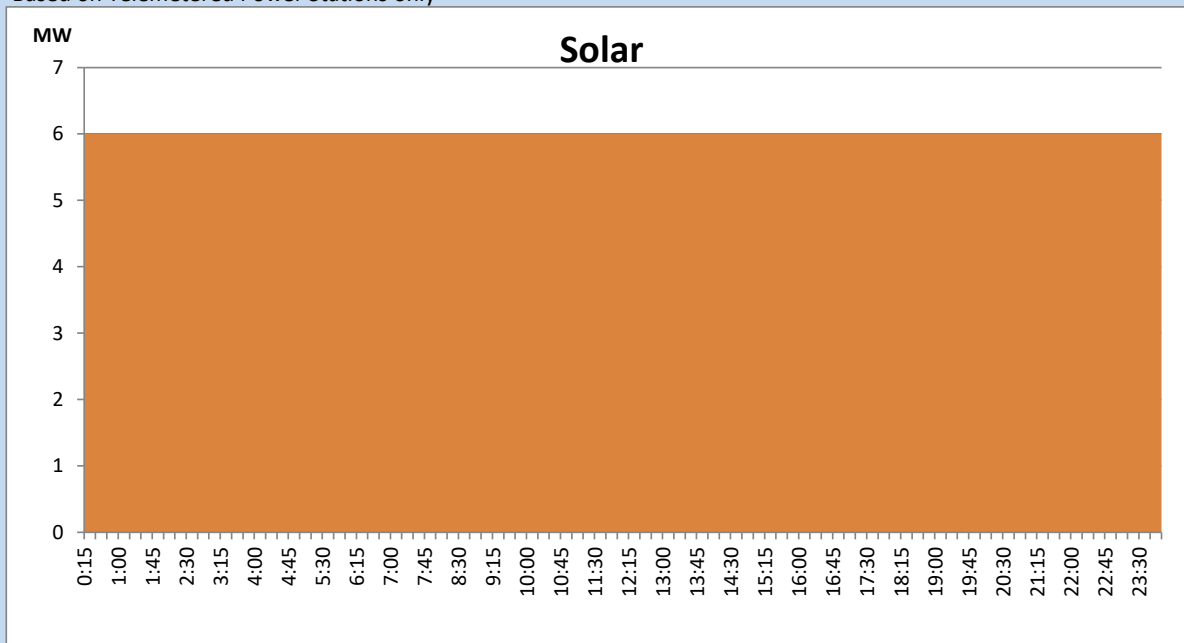
Based on Telemetered Power Stations only



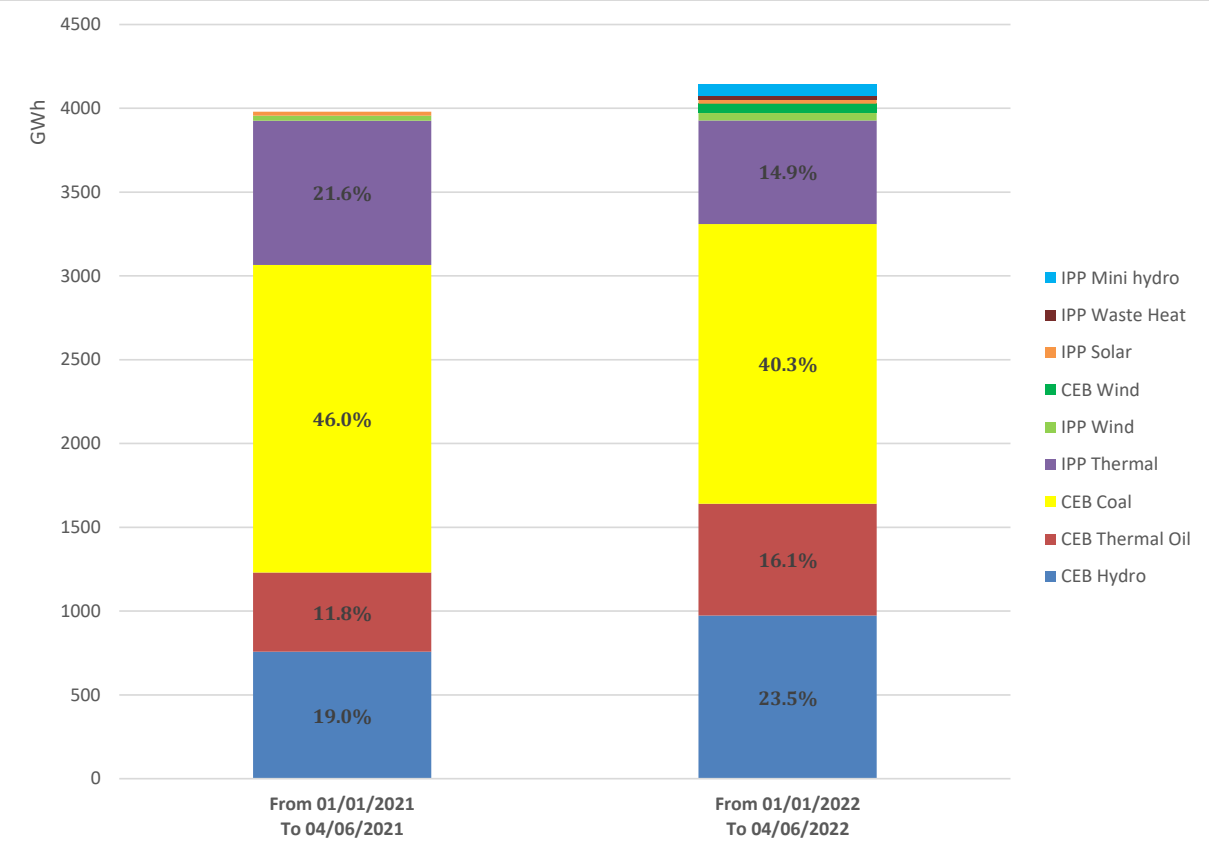
## Solar Generation during the Previous day

April 5, 2022

Based on Telemetered Power Stations only



# Cumulative Dispatch Comparison with Last Year



## Thermal Plant Fuel types

Power Station	Primary Fuel
CEB Thermal	
Sapugaskanda 1	Heavy Fuel
Sapugaskanda 2	Heavy Fuel
Kelanitissa Small Gas Turbines	Auto Diesel
GT 7 - Kelanitissa	Auto Diesel
Kelanitissa CCY	Naphtha & Diesel
Lakvijaya 1	Coal
Lakvijaya 2	Coal
Lakvijaya 3	Coal
Uthuru Janani	Heavy Fuel
Barge CEB	Heavy Fuel

Power Station	Primary Fuel
Private Thermal	
Sojitz - Kelanitissa	Auto Diesel
West Coast	Heavy Fuel

## Major Incidents during the day -as reported by CEB morning of

April 7, 2022

- 1) Rotational manual load shedding was carried out from 06:00hrs to 23:00hrs.
- 2) Balangoda -New Galle cct tripped and auto-reclosed from both ends at 14:46hrs due to the operation of distance protection.
- 3) Sojitz made available from 21:00hrs.