

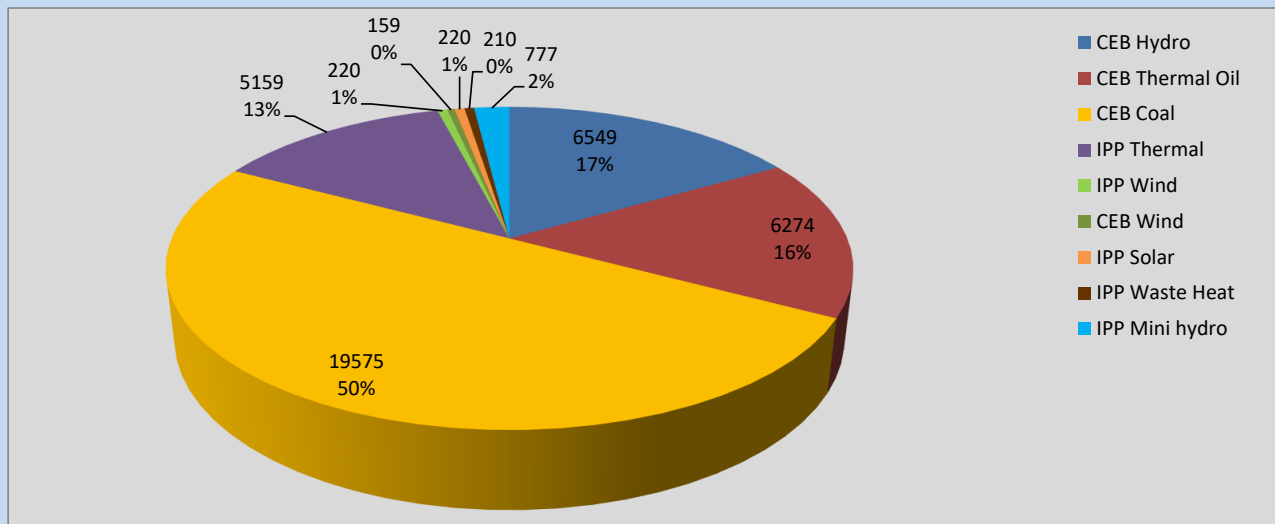
Generation and Reservoirs Statistics

April 4, 2022



PUBLIC UTILITIES COMMISSION OF SRI LANKA

Daily Generation Mix in MWh



Total Generation **39,175 MWh**

Note: Above data is excluding contribution from Roof Top Solar, 1MW Solar and certain Mini Hydro plants

Cumulative Dispatch

Note: Following data is Excluding contribution from Roof Top Solar, 1MW solar and Mini Hydro plants

For Current Month

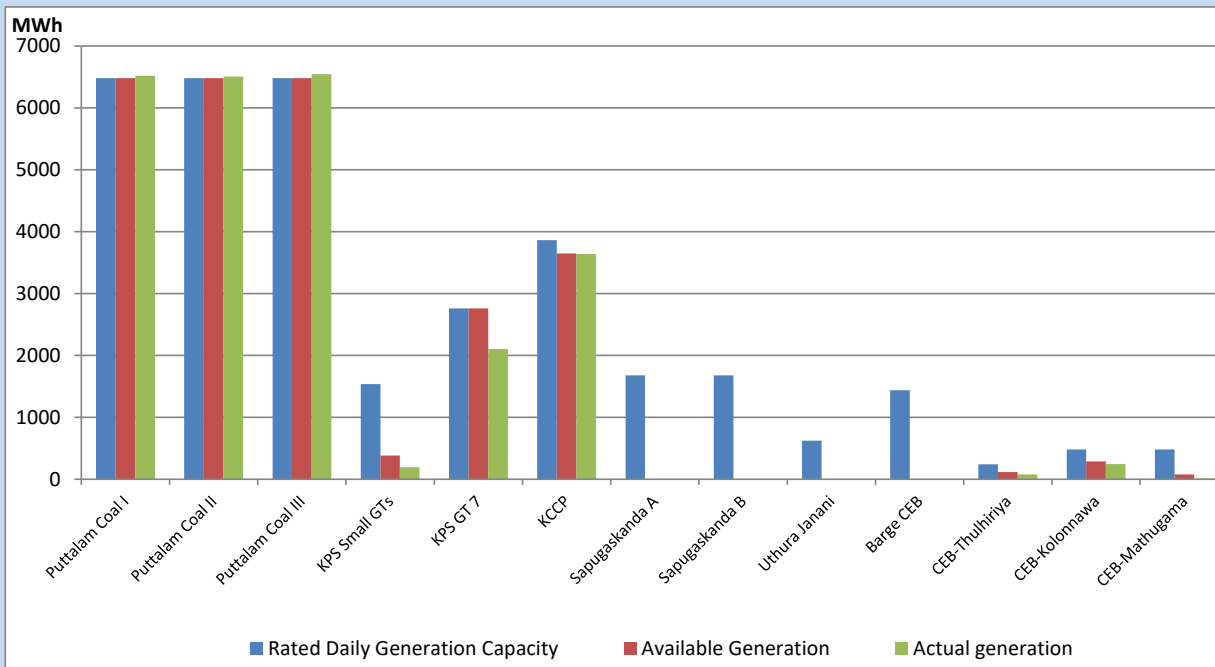
Category	Dispatch (GWh)	Percentage
CEB Hydro	26.87	18.56%
CEB Thermal Oil	16.98	11.73%
CEB Coal	78.29	54.08%
IPP Thermal	15.60	10.78%
SPP Wind	0.88	0.61%
CEB Wind	1.18	0.82%
SPP Solar	1.10	0.76%
SPP Solid Waste	0.70	0.48%
Mini Hydro	3.17	2.19%
Total	144.77	

For Current Year

Category	Dispatch (GWh)	Percentage
CEB Hydro	956.8	23.55%
CEB Thermal Oil	658.2	16.20%
CEB Coal	1,628.8	40.09%
IPP Thermal	608.5	14.98%
SPP Wind	43.3	1.07%
CEB Wind	54.9	1.35%
SPP Solar	24.7	0.61%
SPP Solid Waste	18.4	0.45%
Mini Hydro	69.6	1.71%
Total	4,062.9	

CEB owned Thermal Plant Dispatch

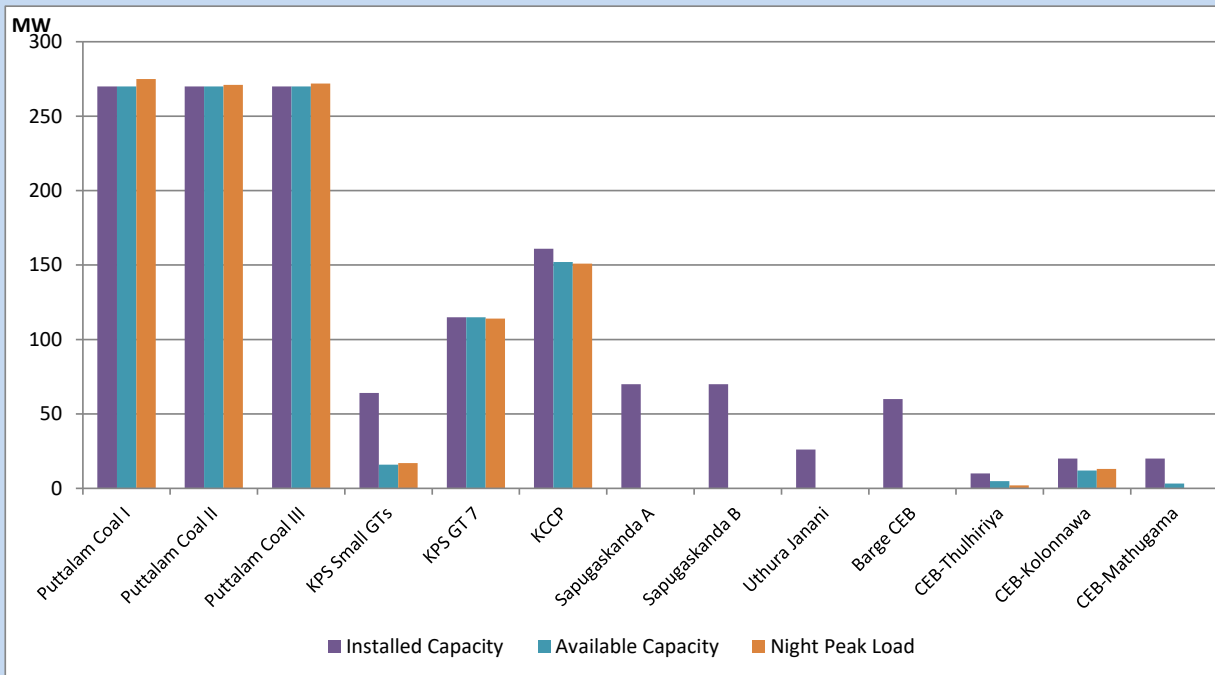
April 4, 2022



Available Generation is estimated based on plant availability at 6.00am on

April 5, 2022

CEB owned Thermal Plant Loading at the Night Peak



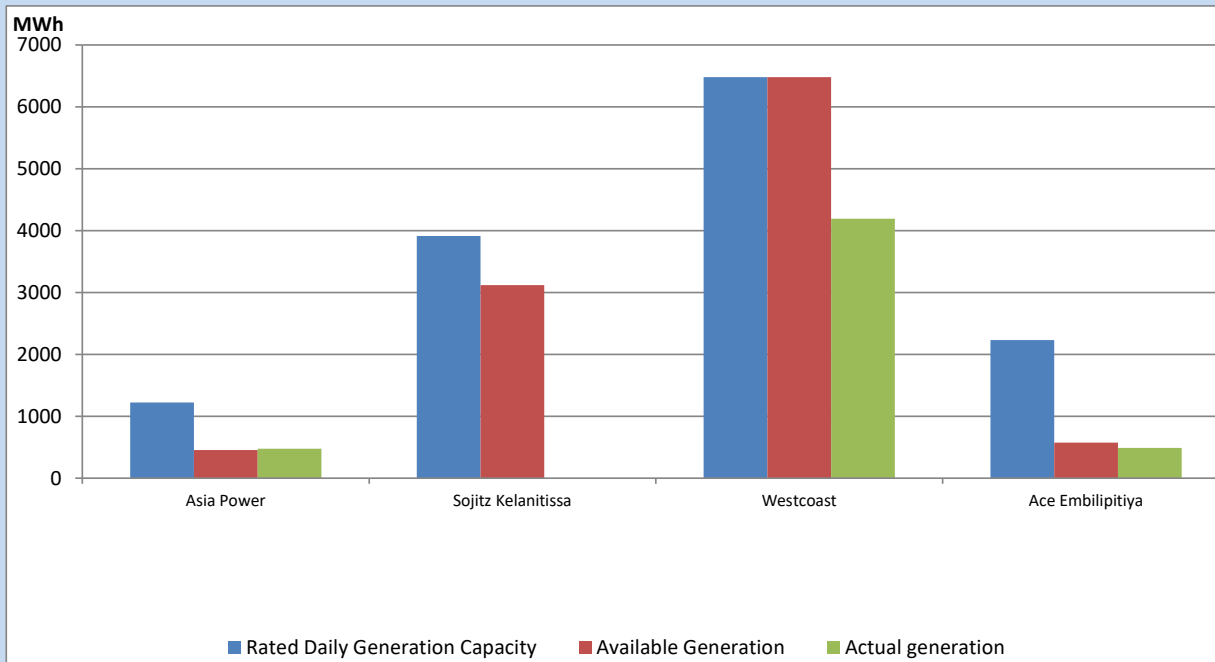
Note- Plant availability is recorded at 6.00 am on

April 5, 2022

IPP owned Thermal Plant Dispatch

April 4, 2022

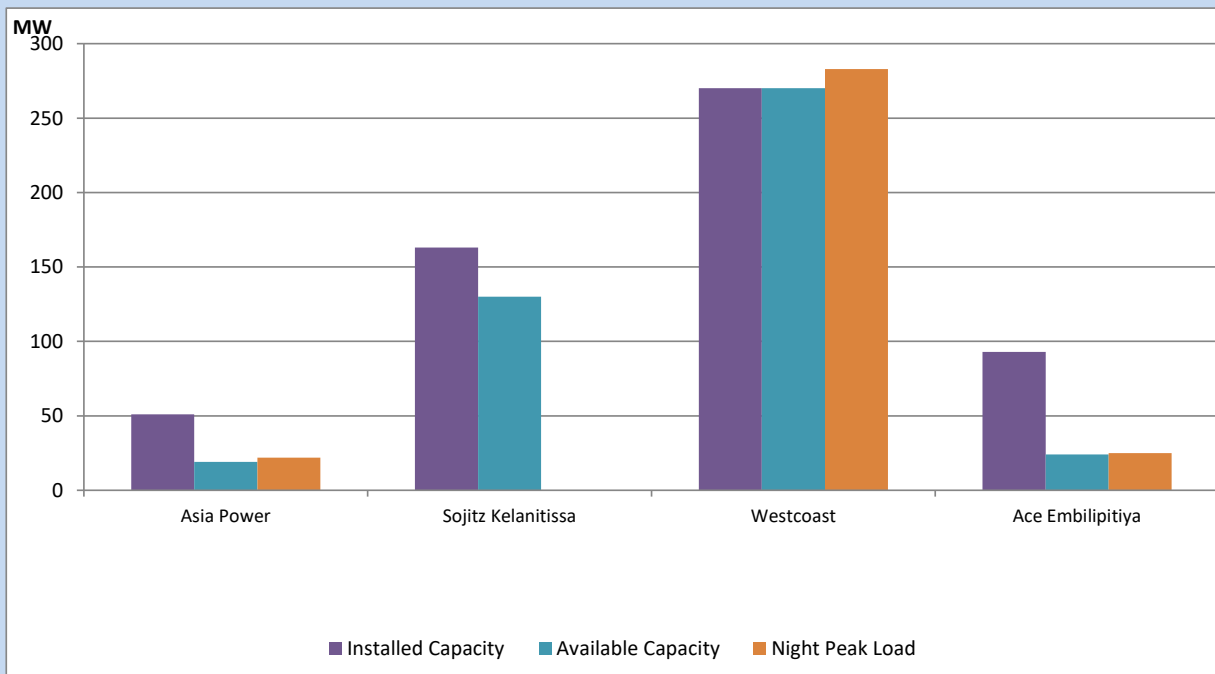
ACE Matara, Asia Power, V Power Pallekale, Vpower Galle, V Power Horana, Vpower Hambantota, Vpower Valachchena and Altaqa Mahiyanganaya are not available due to expiration of PPAs



Available Generation is estimated based on plant availability at 6.00am on

April 5, 2022

IPP owned Thermal Plant Loading at the Night Peak

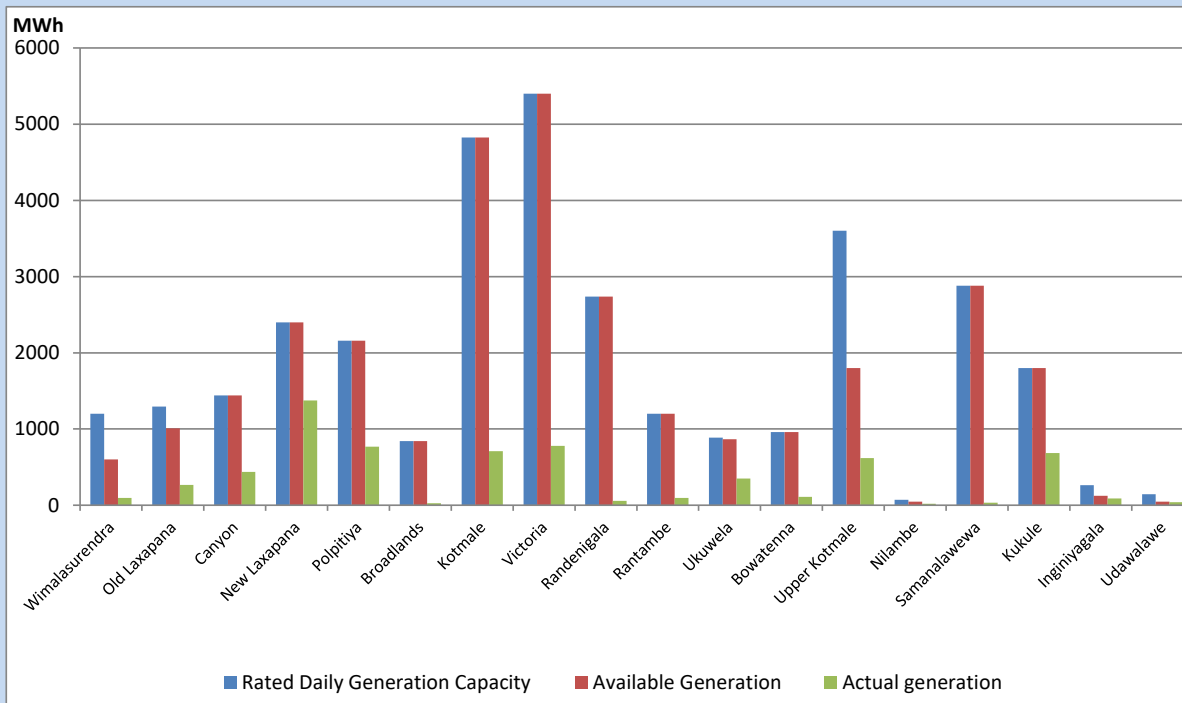


Note- Plant availability is recorded at 6.00 am on

April 5, 2022

Major Hydro Plant Dispatch

April 4, 2022

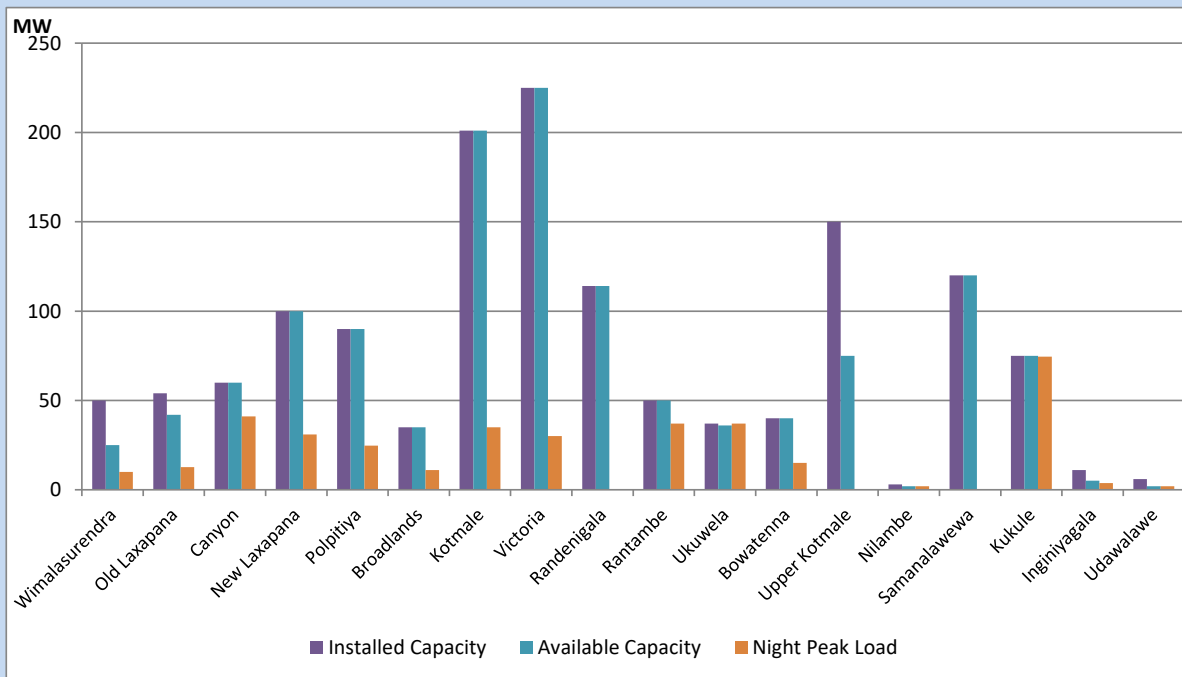


Available Generation is estimated based on plant availability at 6.00am on April 5, 2022
 Broadlands power plant is operating in the Commissioning Stage

April 5, 2022

Major Hydro Plant Loading at Night Peak

April 4, 2022



Note- Plant availability is recorded at 6.00 am on April 5, 2022
 Broadlands power plant is operating in the Commissioning Stage

Summary of Major Plant performance

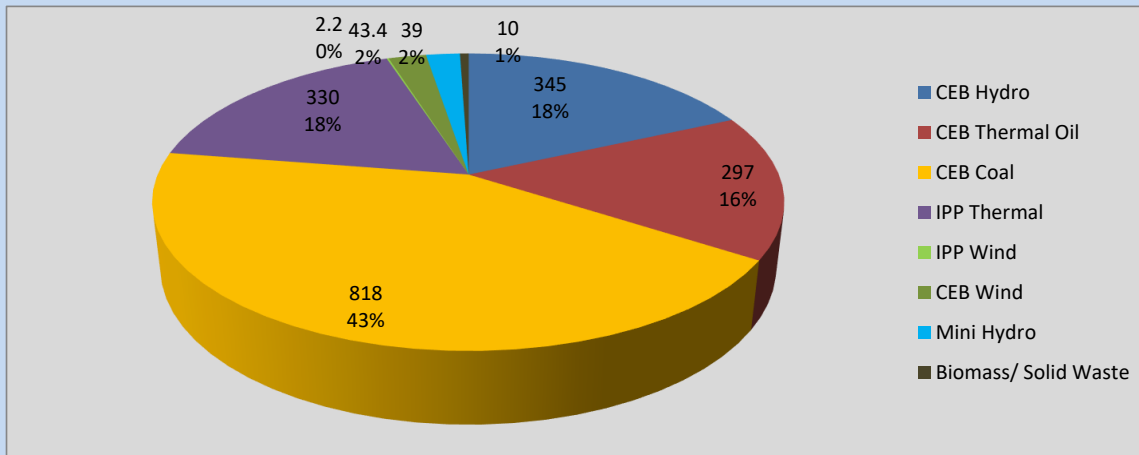
Plant	Installed Capacity	Plant Availability	Night peak Load	Plant Dispatch
	(MW)	(MW)	(MW)	(MWh)
Wimalasurendra	50	25	10	95
Old Laxapana	54	42	13	267
Canyon	60	60	41	437
New Laxapana	100	100	31	1,376
Polpitiya	90	90	25	768
Broadlands	35	35	11	26
Kotmale	201	201	35	710
Victoria	225	225	30	779
Randenigala	114	114	0	57
Rantambe	50	50	37	95
Ukuwela	37	36	37	350
Bowatenna	40	40	15	108
Upper Kotmale	150	75	0	618
Nilambe	3	2	2	18
Samanalawewa	120	120	0	31
Kukule	75	75	75	685
Inginiyagala	11	5	4	89
Udawalawe	6	2	2	40
Puttalam Coal I	270	270	275	6,521
Puttalam Coal II	270	270	271	6,507
Puttalam Coal III	270	270	272	6,547
KPS Small GTs	64	16	17	194
KPS GT 7	115	115	114	2,102
KCCP	161	152	151	3,642
Sapugaskanda A	70	0	0	0
Sapugaskanda B	70	0	0	0
Uthura Janani	26	0	0	0
Barge CEB	60	0	0	0
CEB-Thulhiriya	10	5	2	77
CEB-Kolonnawa	20	12	13	246
CEB-Mathugama	20	3	0	13
Asia Power	51	19	22	477
Sojitz Kelanitissa	163	130	0	0
West Coast	270	270	283	4,192
ACE Embilipitiya	93	24	25	490
Total	3,424	2,853	1,913	39,175

Plant availability is the availability recorded at 6 am on

April 5, 2022

Contribution to the Night Peak in MW

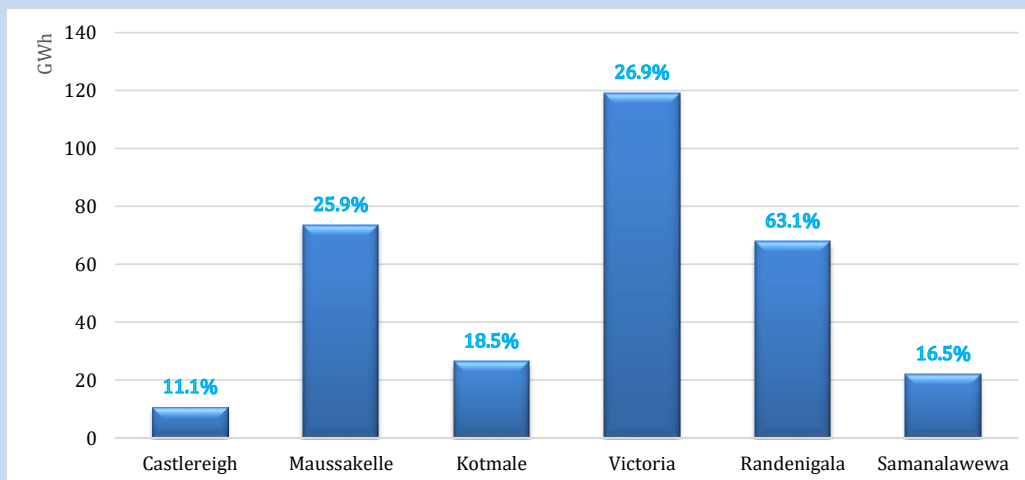
April 4, 2022



Night Peak*	1,890.7 MW
Day Peak	1,675.3 MW
Minimum Demand	1,281.0 MW

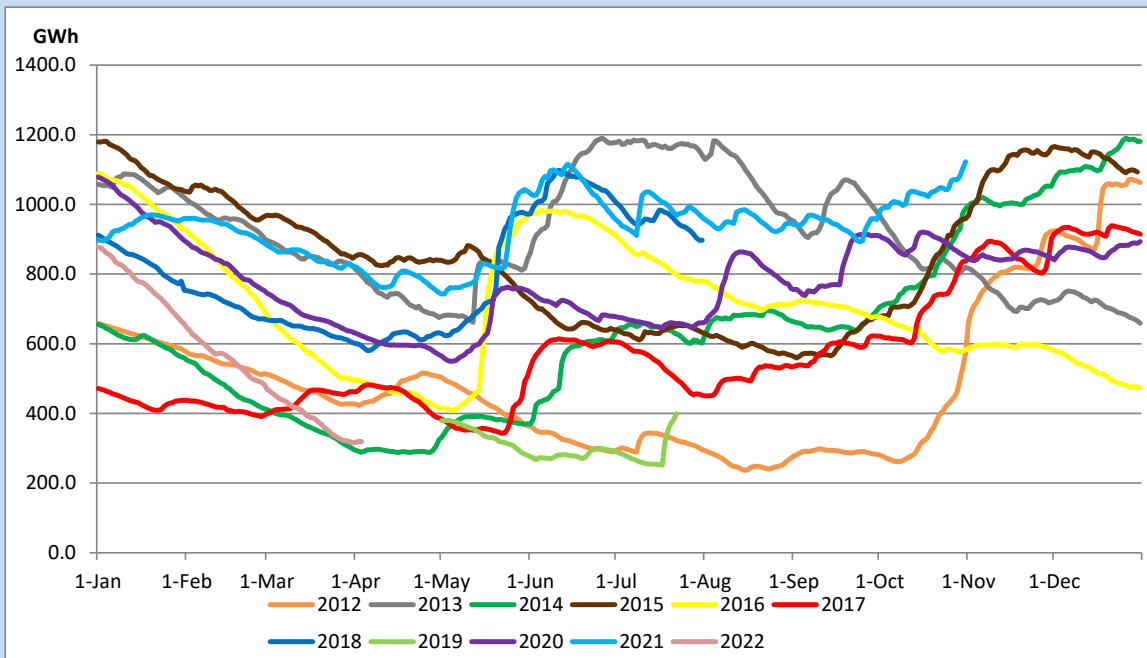
Above figures are excluding contribution from Roof Top Solar, 1MW solar, certain Wind plants and Mini Hydro plants

Reservoir Levels - as at 06.00 Hr on April 5, 2022



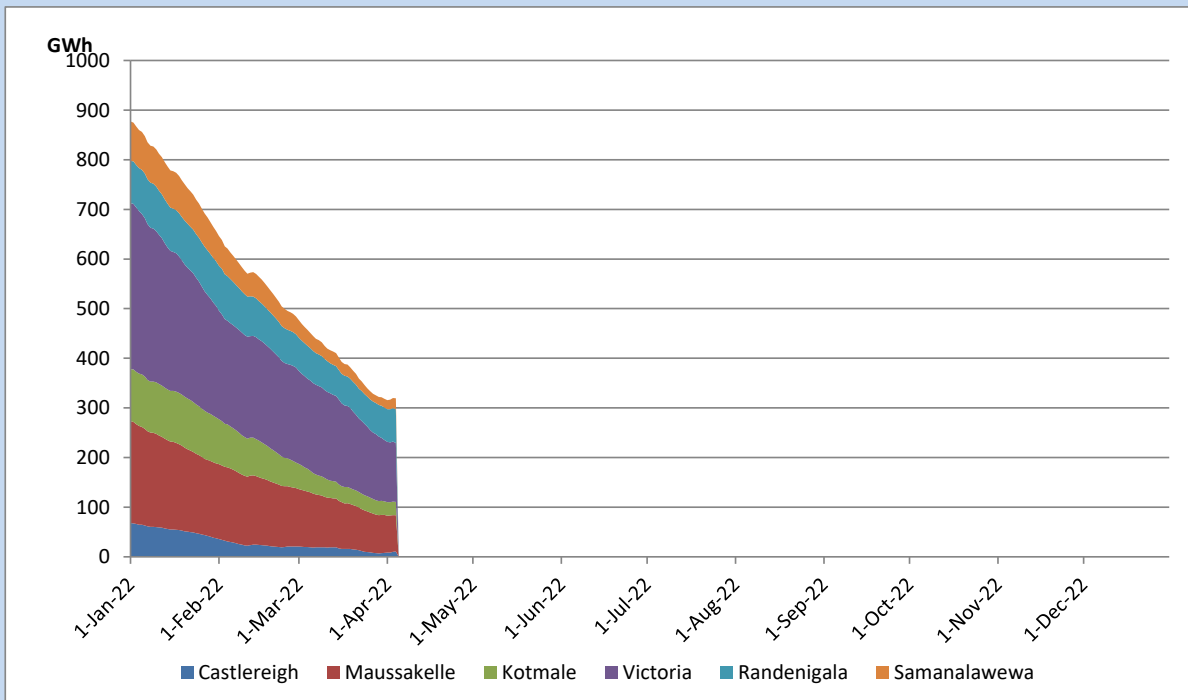
Total Reservoir Level	319.6 GWh
% of Total capacity	27.0%

Comparison of Total Reservoir Storage Levels with Past Years

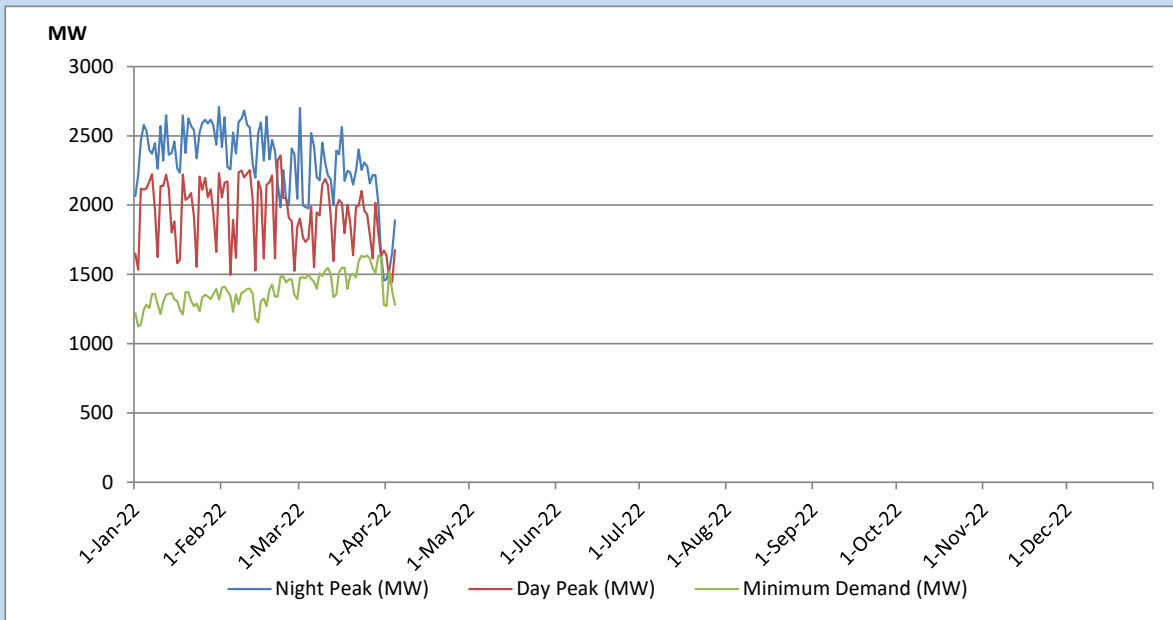


Data for 2018 and 2019 are only available for part of year.

Variation of Major Hydro Reservoir Levels in the current year (GWh)



Variation of Demand during the current year

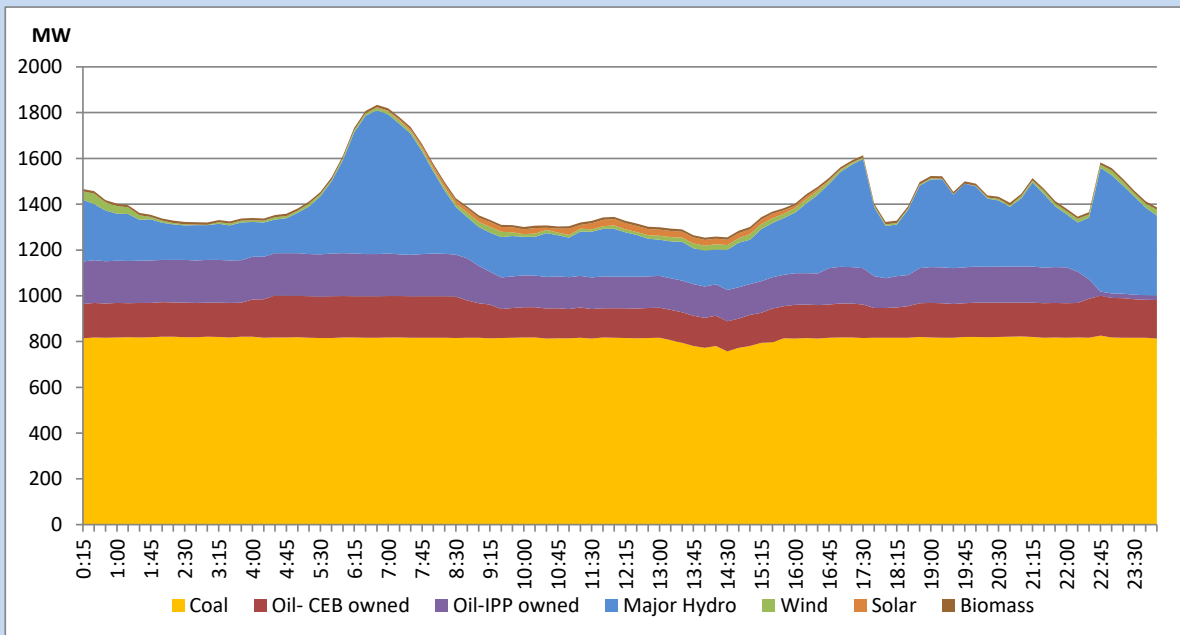


The above figures are excluding contribution from Roof Top Solar, 1MW solar, certain Wind plants and Mini Hydro plants

Daily Load Curve of the Previous day

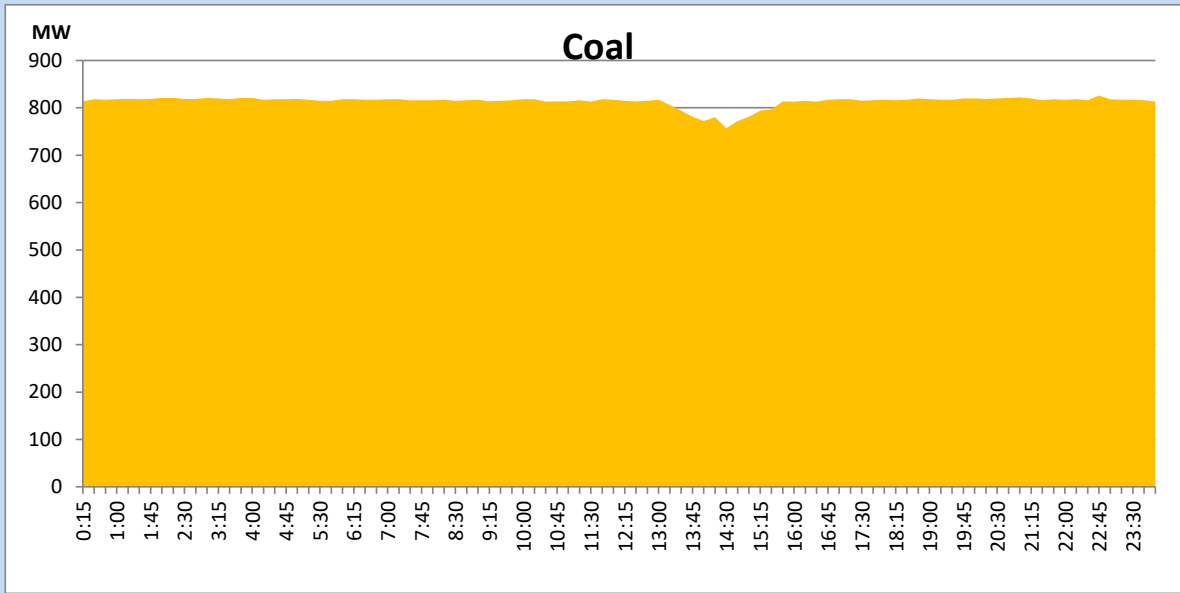
April 3, 2022

Solar and wind data is based on Telemetered Power Stations only



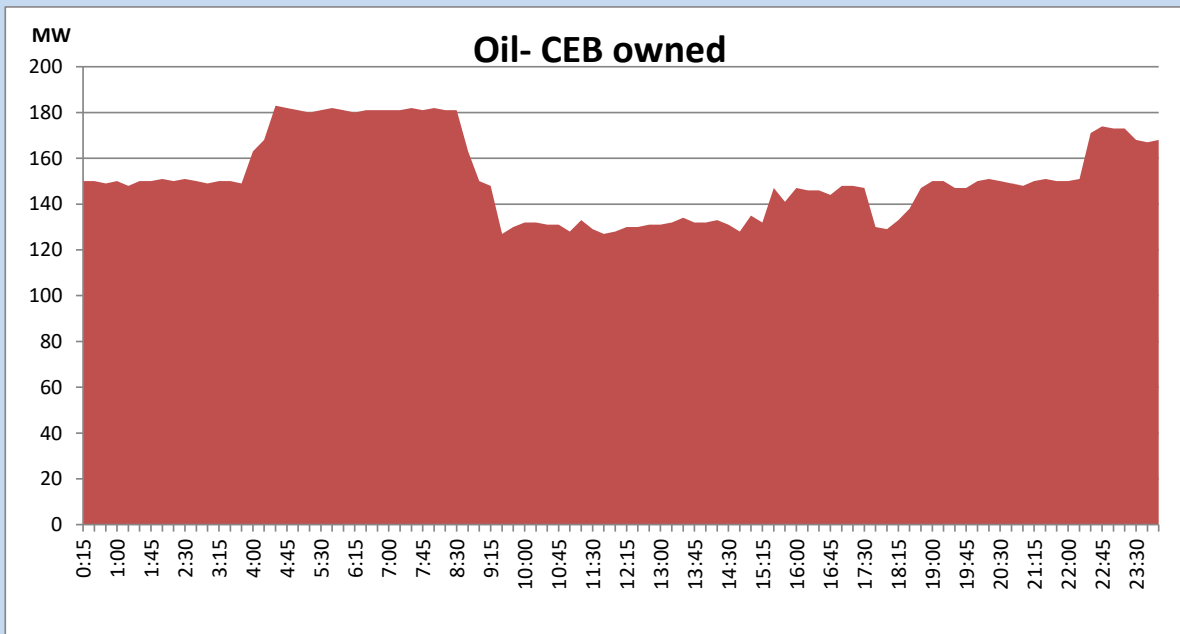
Coal Generation during the Previous day

April 3, 2022



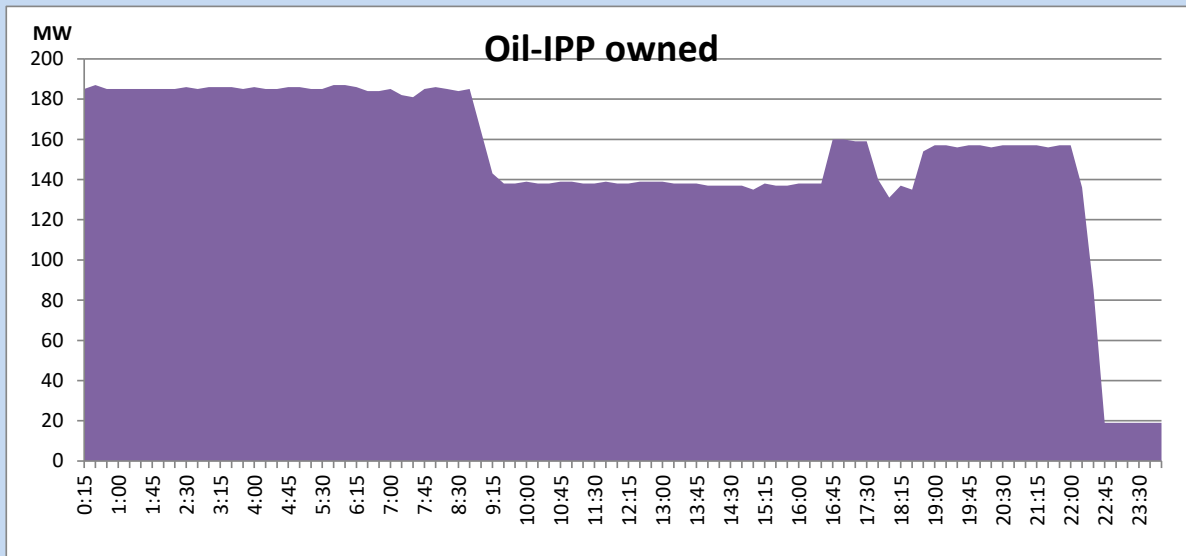
CEB Oil Plant Generation during the Previous day

April 3, 2022



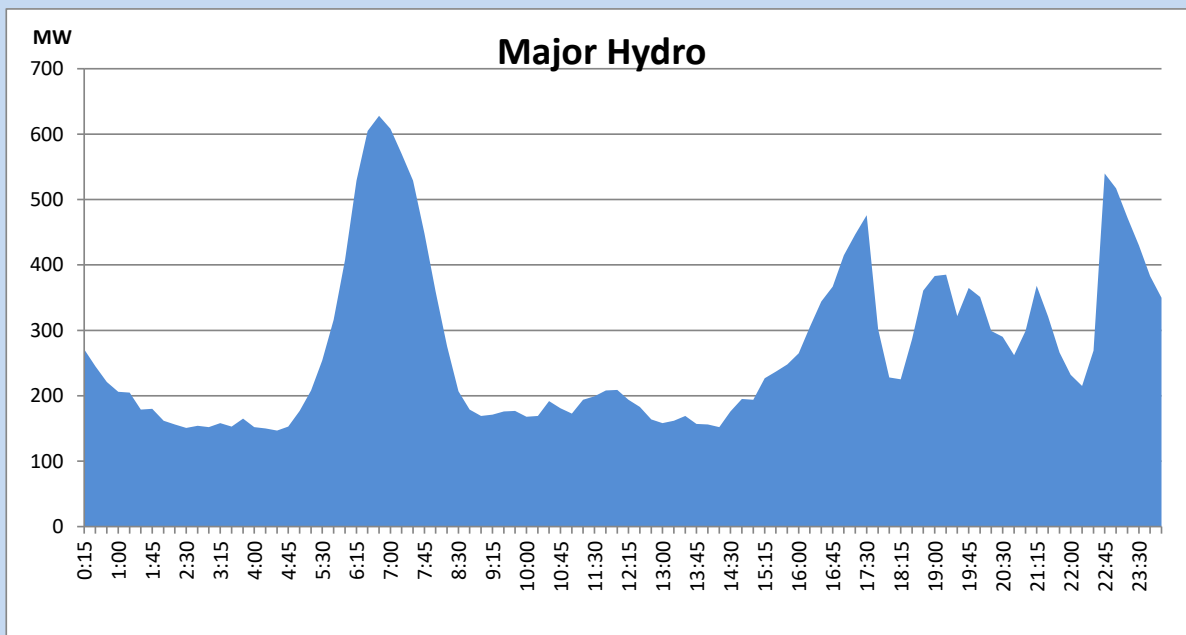
IPP Oil Plant Generation during the Previous day

April 3, 2022



Major Hydro Generation during the Previous day

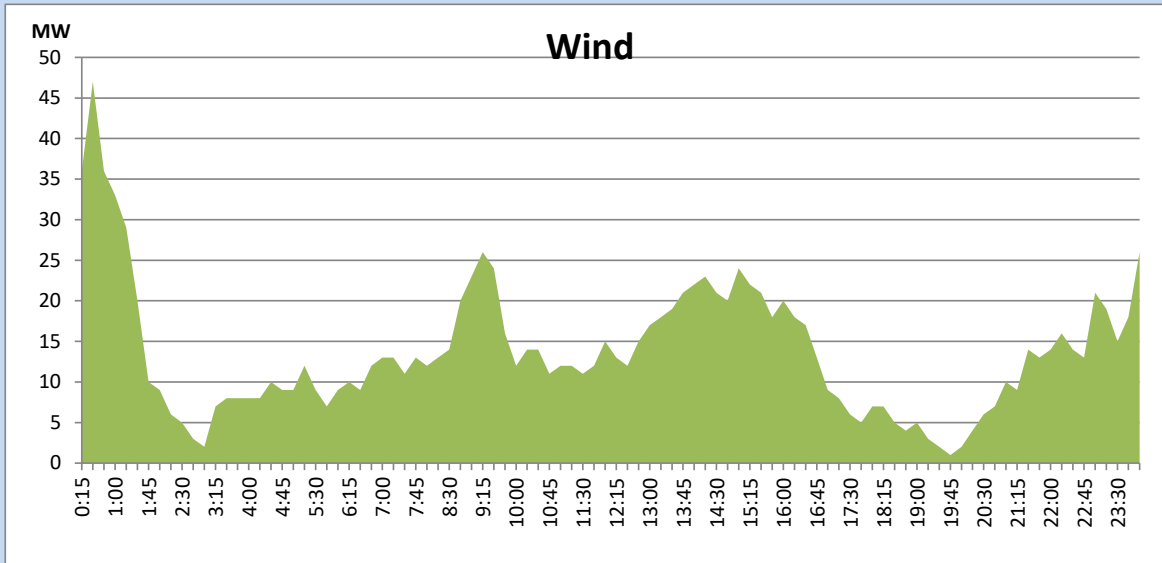
April 3, 2022



Wind Generation during the Previous day

April 3, 2022

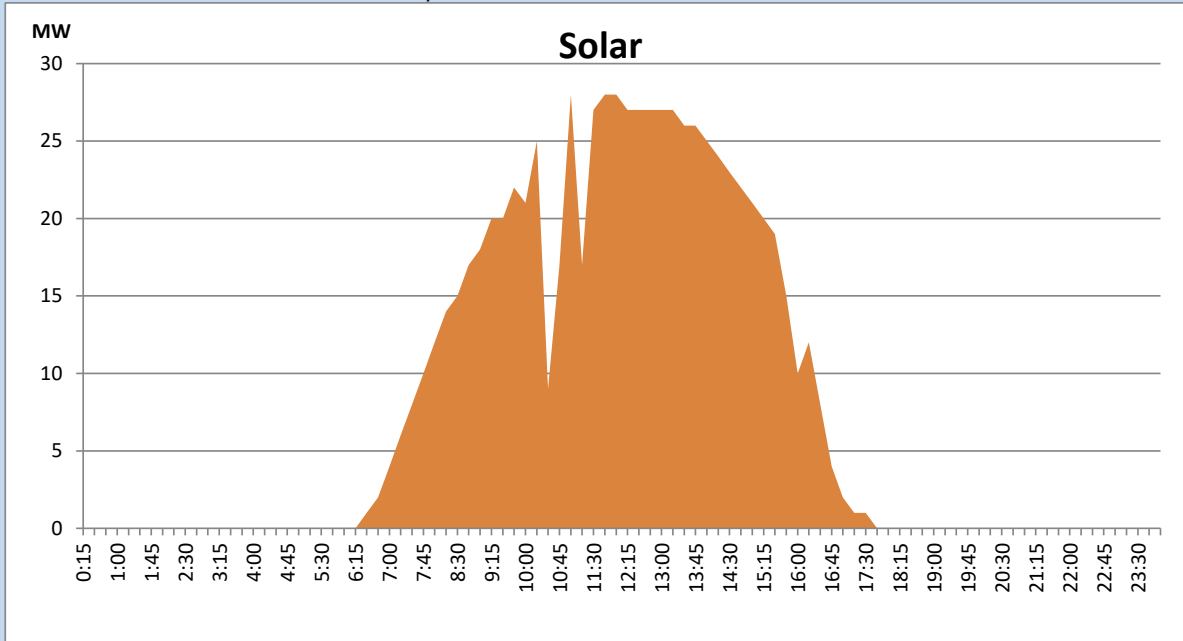
Based on Telemetered Power Stations only



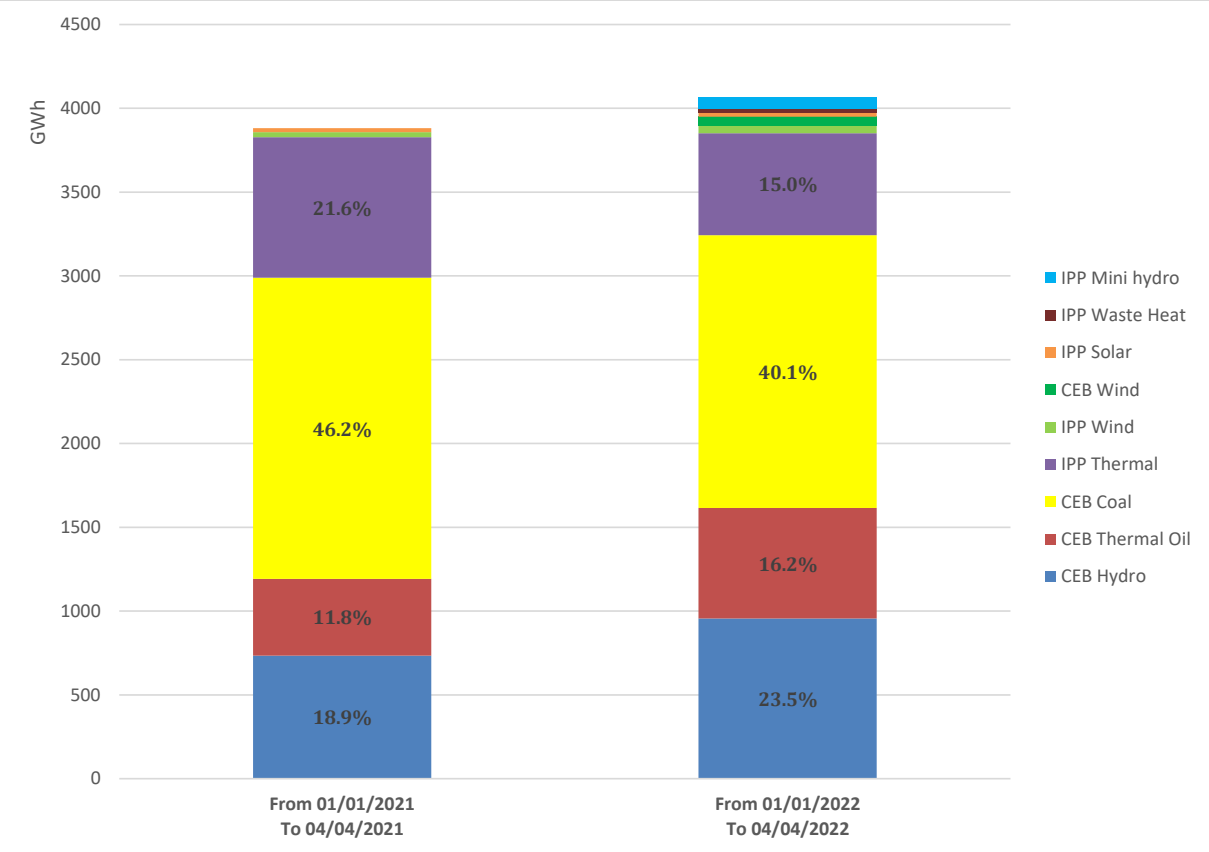
Solar Generation during the Previous day

April 3, 2022

Based on Telemetered Power Stations only



Cumulative Dispatch Comparison with Last Year



Thermal Plant Fuel types

Power Station	Primary Fuel
CEB Thermal	
Sapugaskanda 1	Heavy Fuel
Sapugaskanda 2	Heavy Fuel
Kelanitissa Small Gas Turbines	Auto Diesel
GT 7 - Kelanitissa	Auto Diesel
Kelanitissa CCY	Naphtha & Diesel
Lakvijaya 1	Coal
Lakvijaya 2	Coal
Lakvijaya 3	Coal
Uthuru Janani	Heavy Fuel
Barge CEB	Heavy Fuel

Power Station	Primary Fuel
Private Thermal	
Sojitz - Kelanitissa	Auto Diesel
West Coast	Heavy Fuel

Major Incidents during the day -as reported by CEB morning of

April 5, 2022

- 1) Rotational manual load shedding was carried out from 08:30 hrs to 22:45 hrs.
- 2) Balangoda – Galle & Balangoda – Deniyaya both ccts tripped and A/R from both ends due to the operation of distance protection at 16:05hrs.
At the same time, Galle – Deni cct tripped and A/R from Galle end due to the operation of distance protection.
- 3) Polp-Thul-Athu cct tripped and A/R from all 3 ends due to the operation of distance protection at 17:05hrs.
- 4) Puttalama GSS all 132/33 T/Fs tripped at 18:47hrs due to the operation of standby E/F protection with receipt of E/F indication in 33kV feeder 01 (not tripped). All T/Fs and affected feeders were normalized by 19:10hrs.