

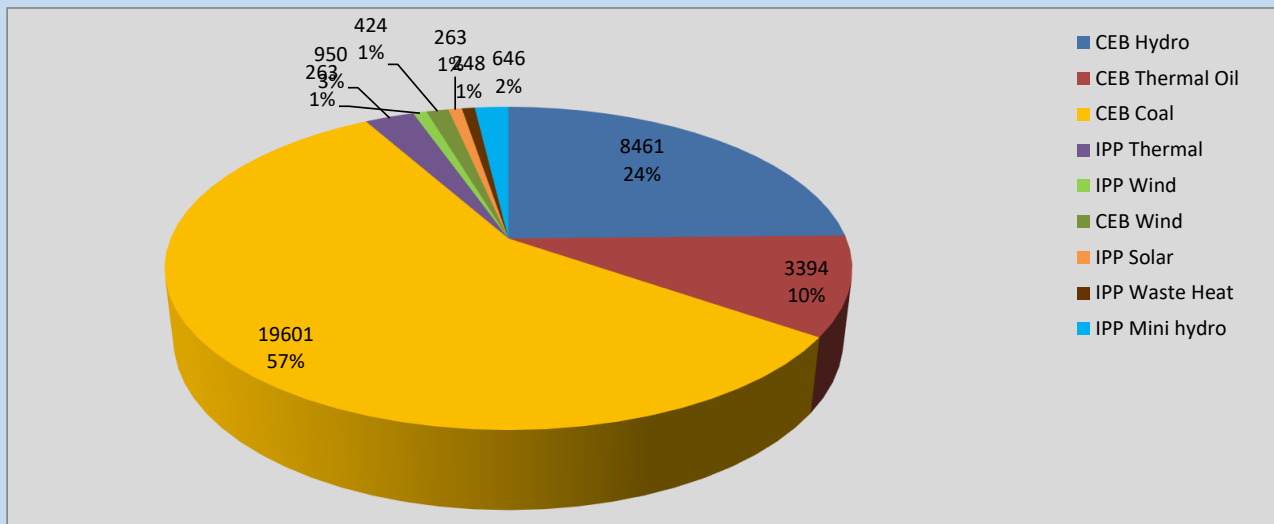
Generation and Reservoirs Statistics

April 1, 2022



PUBLIC UTILITIES COMMISSION OF SRI LANKA

Daily Generation Mix in MWh



Total Generation **34,279 MWh**

Note: Above data is excluding contribution from Roof Top Solar, 1MW Solar and certain Mini Hydro plants

Cumulative Dispatch

Note: Following data is Excluding contribution from Roof Top Solar, 1MW solar and Mini Hydro plants

For Current Month

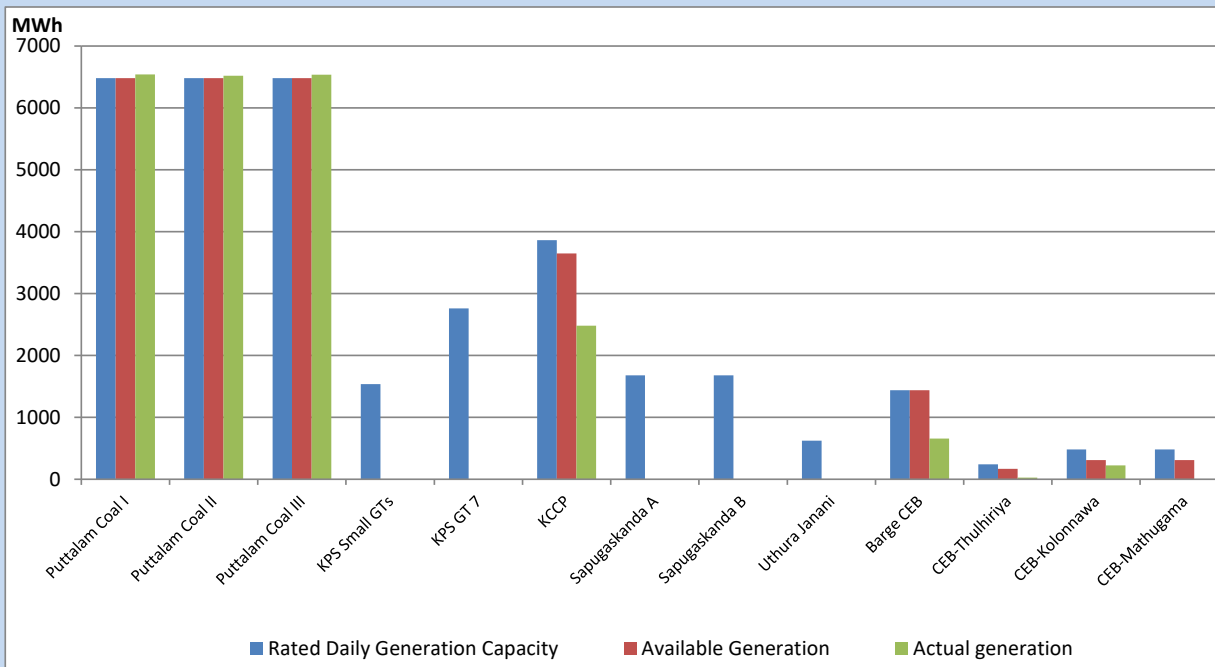
Category	Dispatch (GWh)	Percentage
CEB Hydro	8.47	24.72%
CEB Thermal Oil	3.39	9.89%
CEB Coal	19.60	57.19%
IPP Thermal	0.95	2.77%
SPP Wind	0.26	0.76%
CEB Wind	0.42	1.23%
SPP Solar	0.29	0.85%
SPP Solid Waste	0.25	0.73%
Mini Hydro	0.64	1.87%
Total	34.27	

For Current Year

Category	Dispatch (GWh)	Percentage
CEB Hydro	938.4	23.74%
CEB Thermal Oil	644.6	16.31%
CEB Coal	1,570.1	39.72%
IPP Thermal	593.9	15.03%
SPP Wind	42.7	1.08%
CEB Wind	54.2	1.37%
SPP Solar	23.9	0.60%
SPP Solid Waste	18.0	0.45%
Mini Hydro	67.0	1.70%
Total	3,952.4	

CEB owned Thermal Plant Dispatch

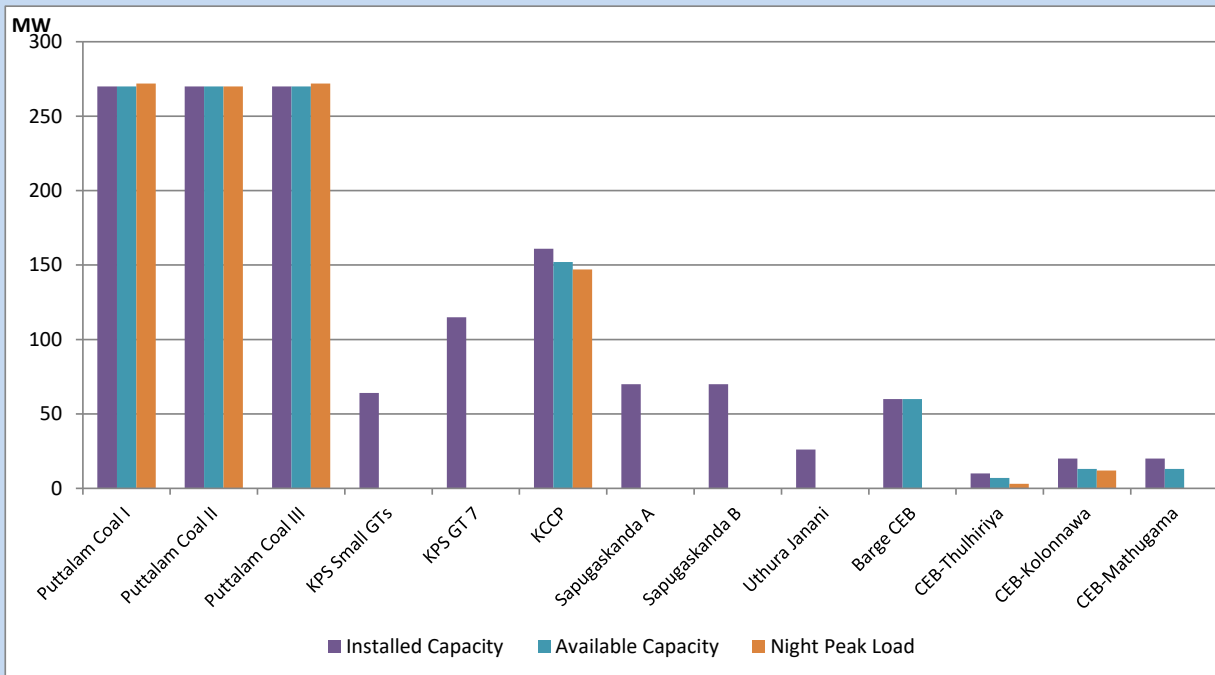
April 1, 2022



Available Generation is estimated based on plant availability at 6.00am on

April 2, 2022

CEB owned Thermal Plant Loading at the Night Peak



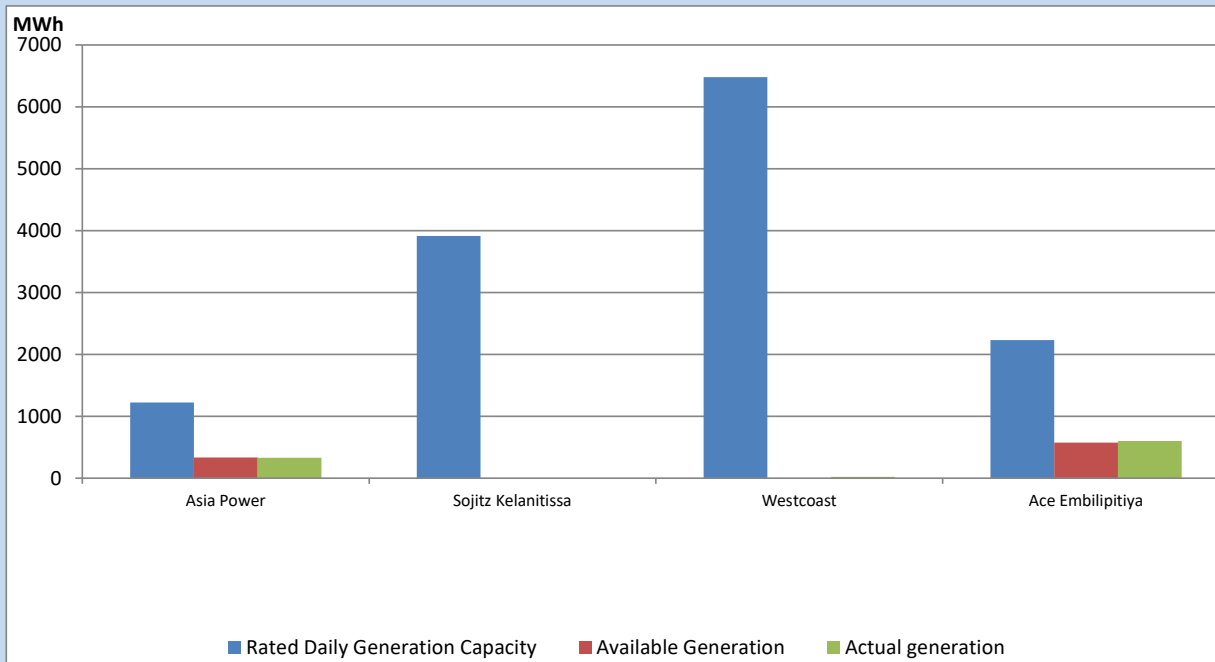
Note- Plant availability is recorded at 6.00 am on

April 2, 2022

IPP owned Thermal Plant Dispatch

April 1, 2022

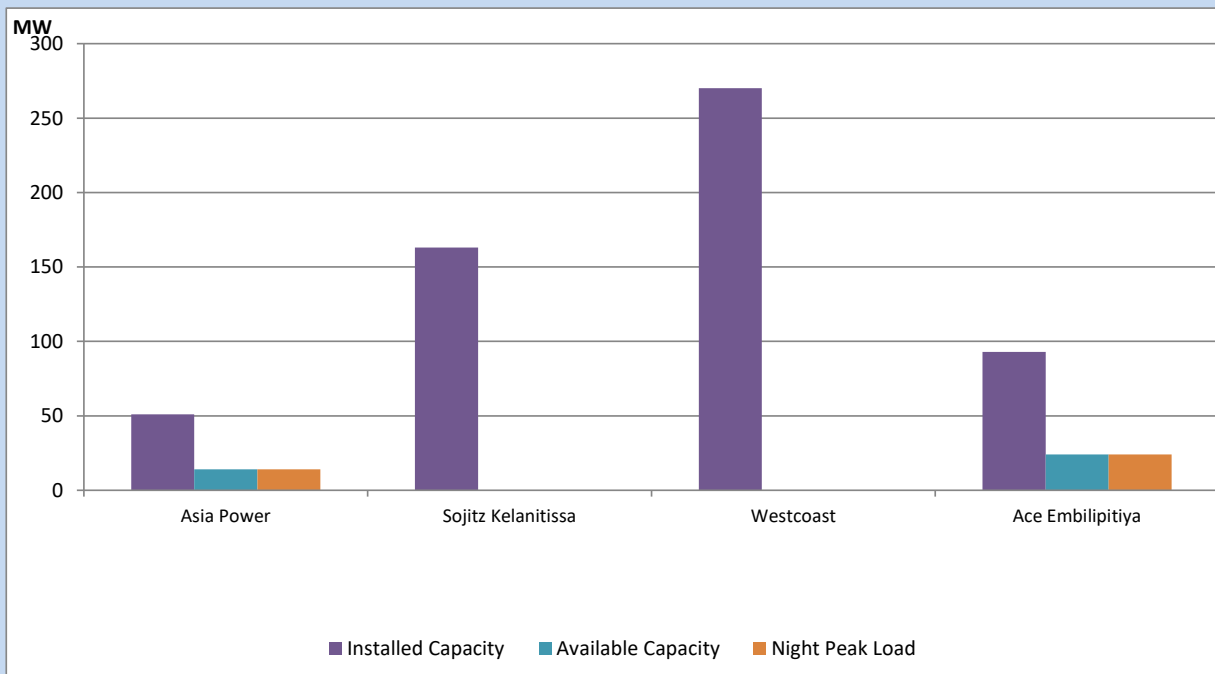
ACE Matara, Asia Power, V Power Pallekale, Vpower Galle, V Power Horana, Vpower Hambantota, Vpower Valachchena and Altaqa Mahiyanganaya are not available due to expiration of PPAs



Available Generation is estimated based on plant availability at 6.00am on

April 2, 2022

IPP owned Thermal Plant Loading at the Night Peak

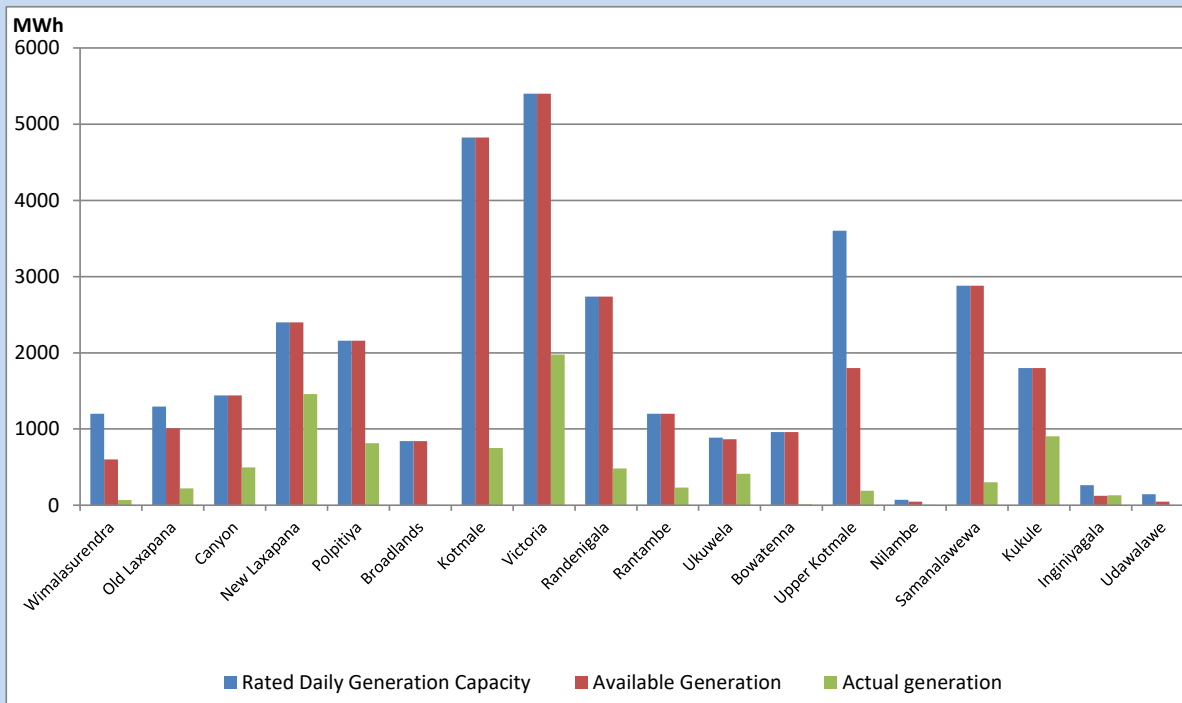


Note- Plant availability is recorded at 6.00 am on

April 2, 2022

Major Hydro Plant Dispatch

April 1, 2022

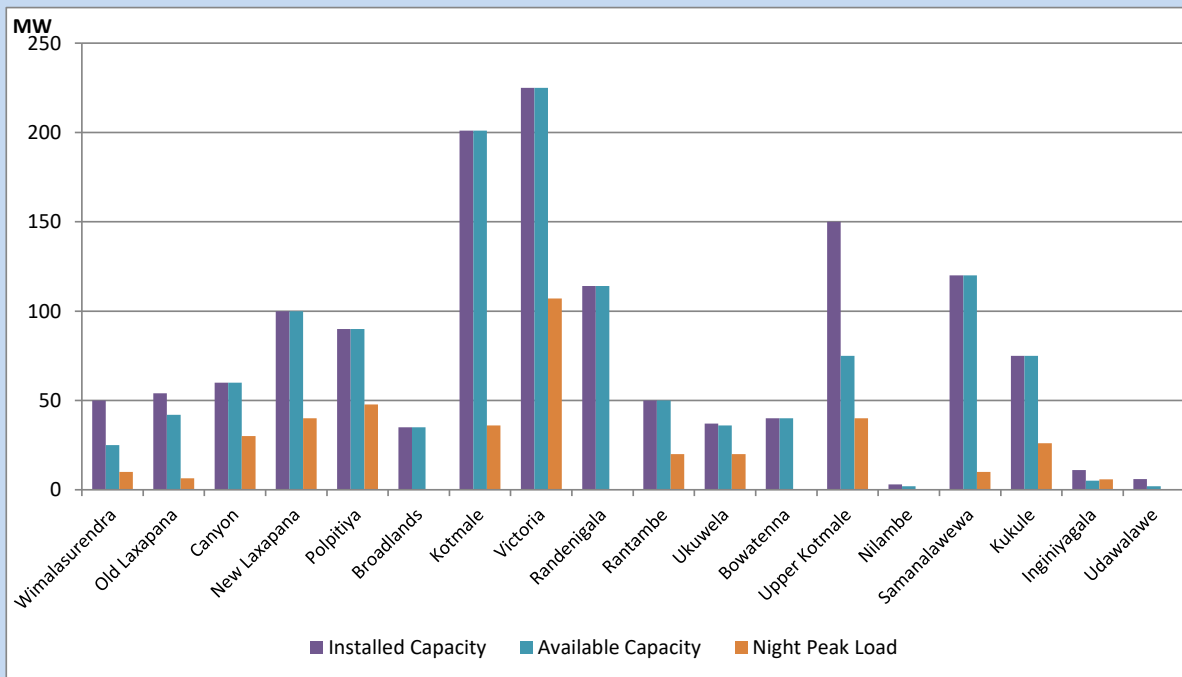


Available Generation is estimated based on plant availability at 6.00am on April 2, 2022
 Broadlands power plant is operating in the Commissioning Stage

April 2, 2022

Major Hydro Plant Loading at Night Peak

April 1, 2022



Note- Plant availability is recorded at 6.00 am on April 2, 2022
 Broadlands power plant is operating in the Commissioning Stage

Summary of Major Plant performance

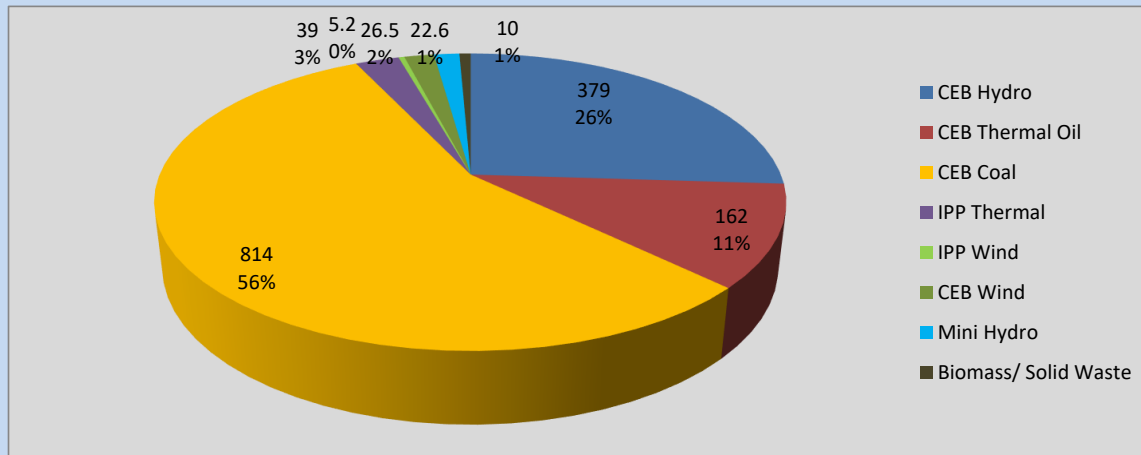
Plant	Installed Capacity	Plant Availability	Night peak Load	Plant Dispatch
	(MW)	(MW)	(MW)	(MWh)
Wimalasurendra	50	25	10	67
Old Laxapana	54	42	6	222
Canyon	60	60	30	498
New Laxapana	100	100	40	1,459
Polpitiya	90	90	48	814
Broadlands	35	35	0	6
Kotmale	201	201	36	750
Victoria	225	225	107	1,979
Randenigala	114	114	0	484
Rantambe	50	50	20	231
Ukuwela	37	36	20	411
Bowatenna	40	40	0	12
Upper Kotmale	150	75	40	188
Nilambe	3	2	0	5
Samanalawewa	120	120	10	301
Kukule	75	75	26	905
Inginiyagala	11	5	6	129
Udawalawe	6	2	0	0
Puttalam Coal I	270	270	272	6,542
Puttalam Coal II	270	270	270	6,521
Puttalam Coal III	270	270	272	6,538
KPS Small GTs	64	0	0	0
KPS GT 7	115	0	0	0
KCCP	161	152	147	2,483
Sapugaskanda A	70	0	0	0
Sapugaskanda B	70	0	0	0
Uthura Janani	26	0	0	0
Barge CEB	60	60	0	657
CEB-Thulhiriya	10	7	3	28
CEB-Kolonnawa	20	13	12	223
CEB-Mathugama	20	13	0	3
Asia Power	51	14	14	329
Sojitz Kelanitissa	163	0	0	0
West Coast	270	0	0	21
ACE Embilipitiya	93	24	24	600
Total	3,424	2,390	1,482	34,279

Plant availability is the availability recorded at 6 am on

April 2, 2022

Contribution to the Night Peak in MW

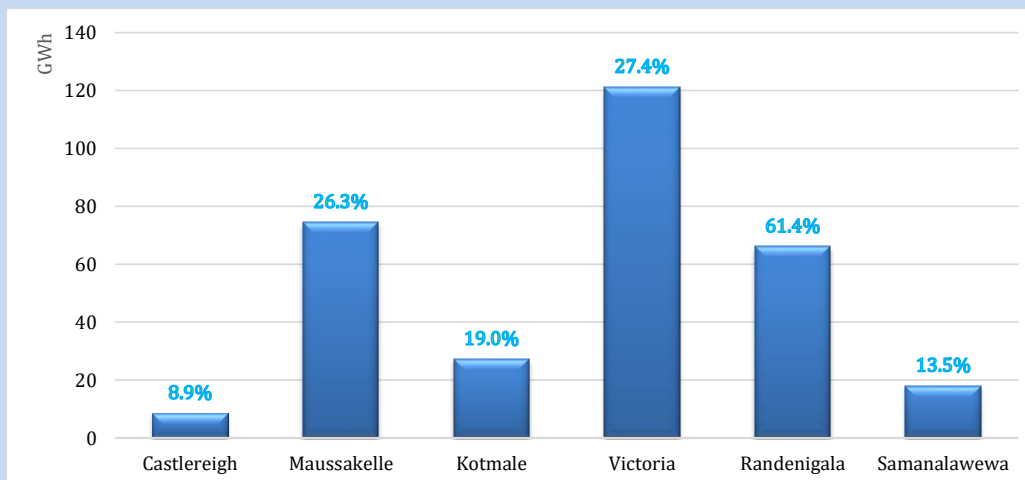
April 1, 2022



Night Peak*	1,463.3 MW
Day Peak	1,635.0 MW
Minimum Demand	1,270.6 MW

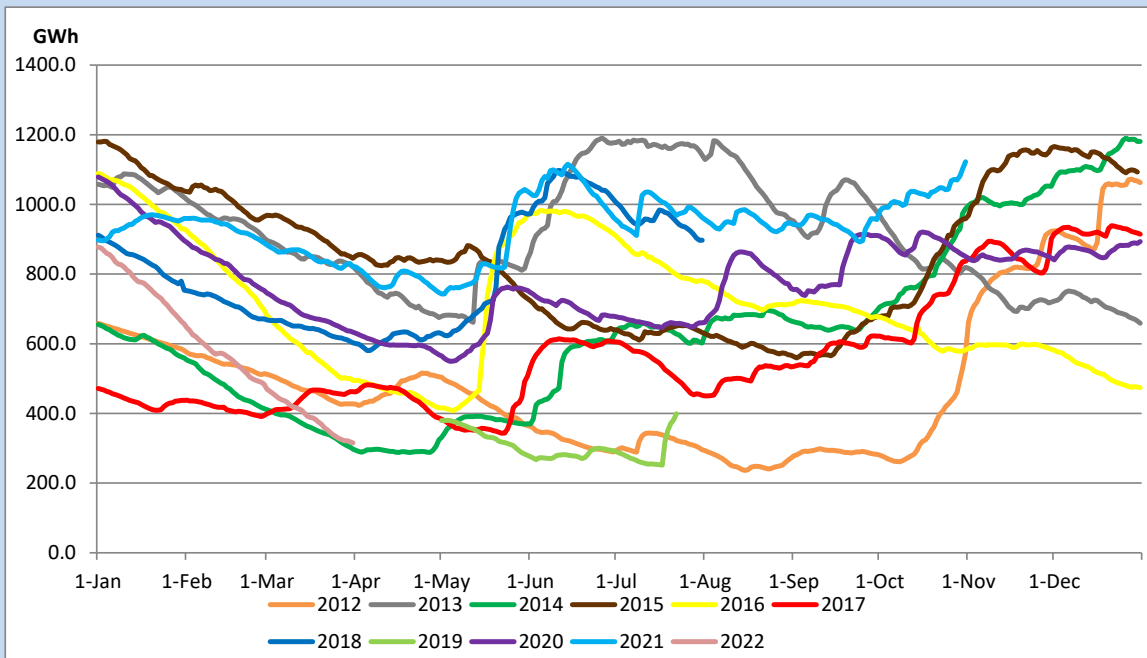
Above figures are excluding contribution from Roof Top Solar, 1MW solar, certain Wind plants and Mini Hydro plants

Reservoir Levels - as at 06.00 Hr on April 2, 2022



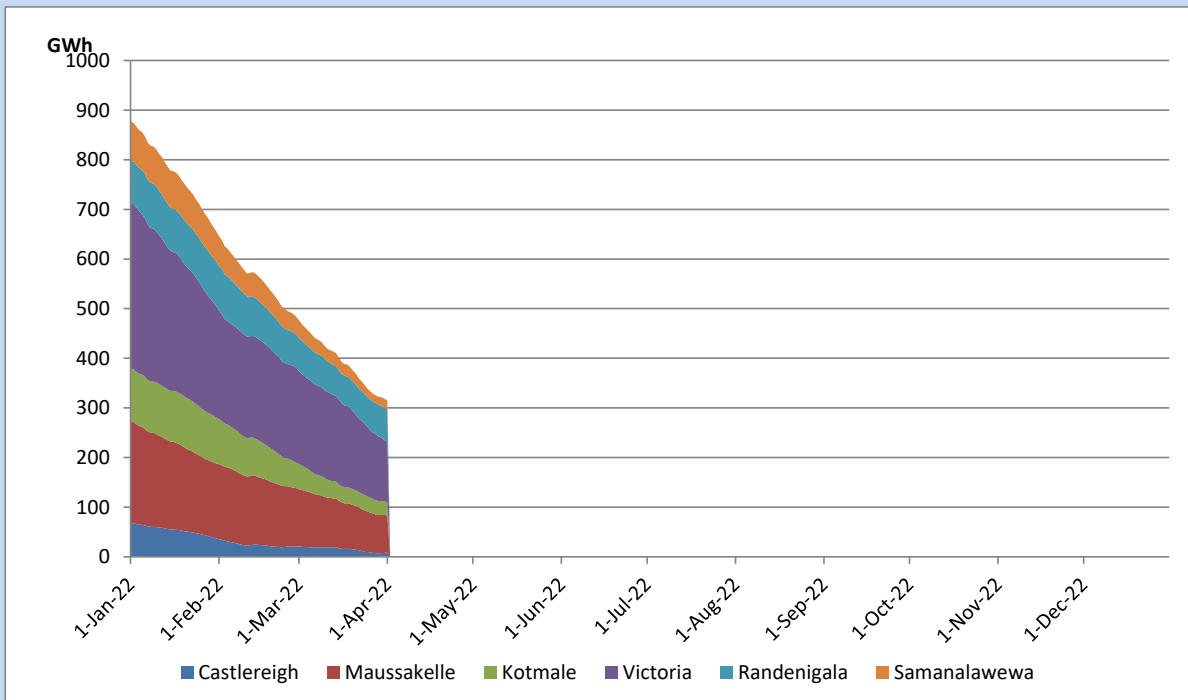
Total Reservoir Level	315.5 GWh
% of Total capacity	26.1%

Comparison of Total Reservoir Storage Levels with Past Years

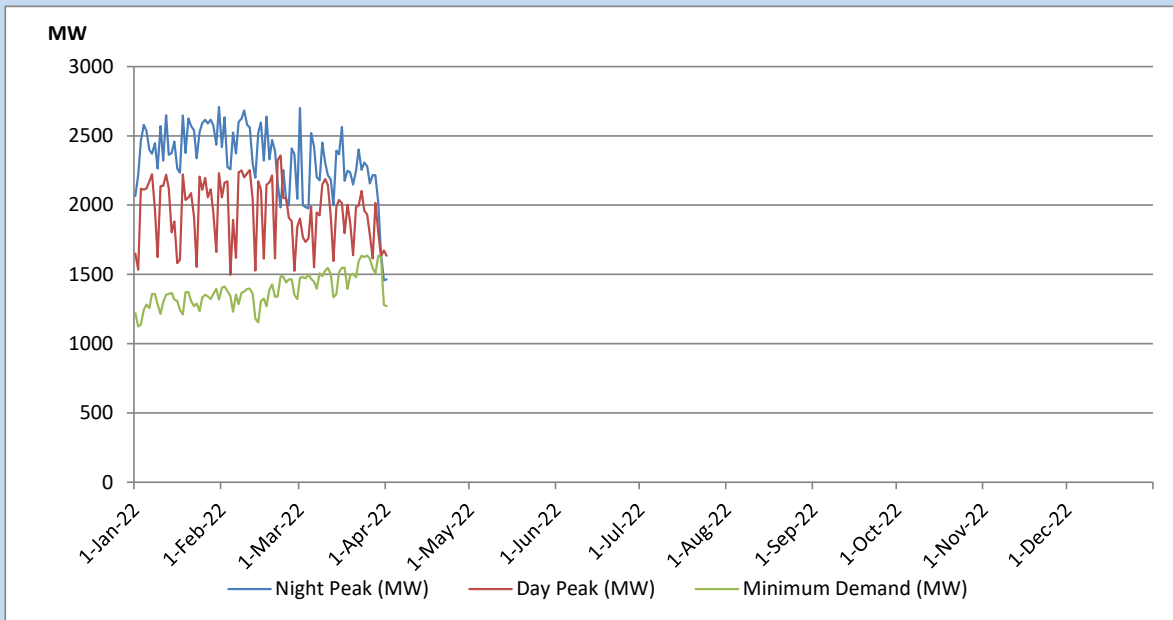


Data for 2018 and 2019 are only available for part of year.

Variation of Major Hydro Reservoir Levels in the current year (GWh)



Variation of Demand during the current year

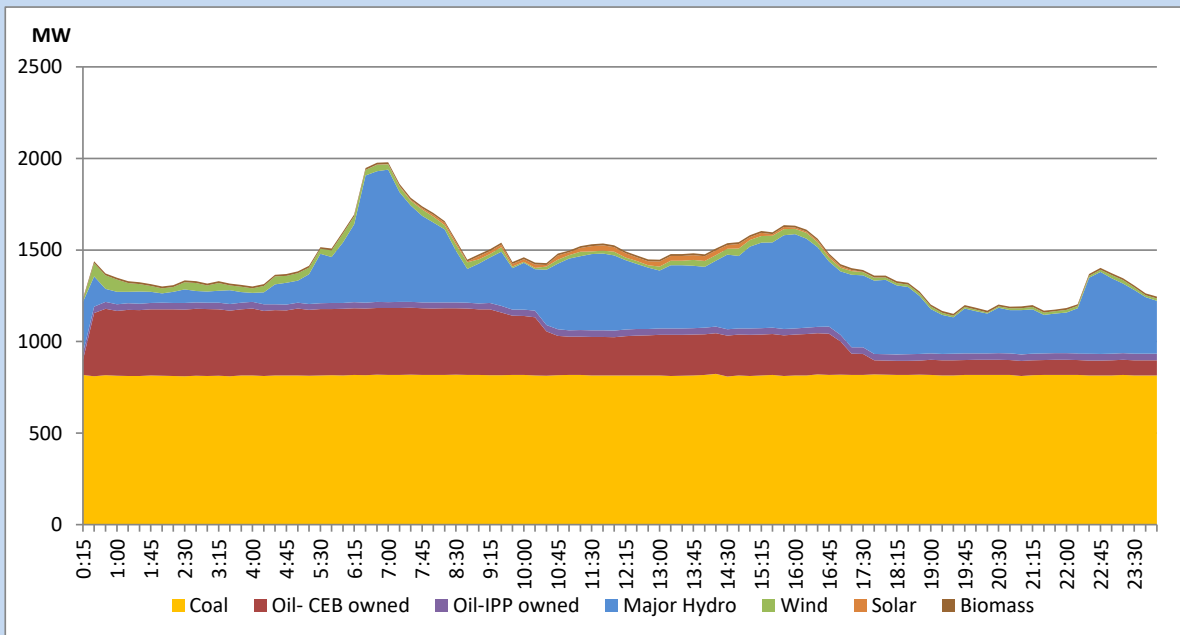


The above figures are excluding contribution from Roof Top Solar, 1MW solar, certain Wind plants and Mini Hydro plants

Daily Load Curve of the Previous day

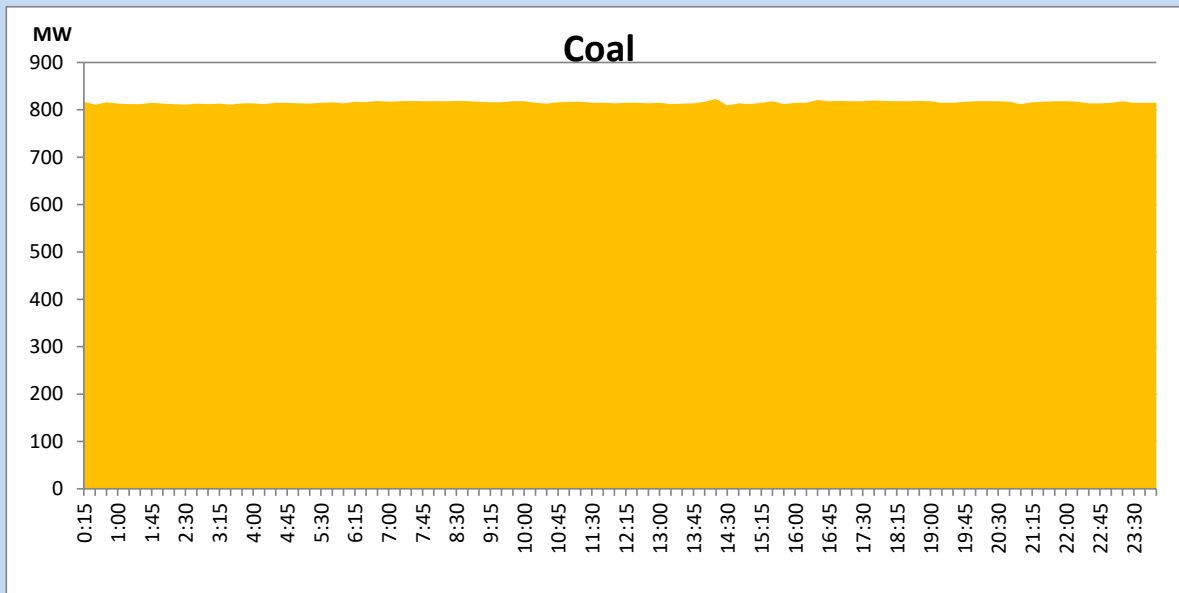
March 31, 2022

Solar and wind data is based on Telemetered Power Stations only



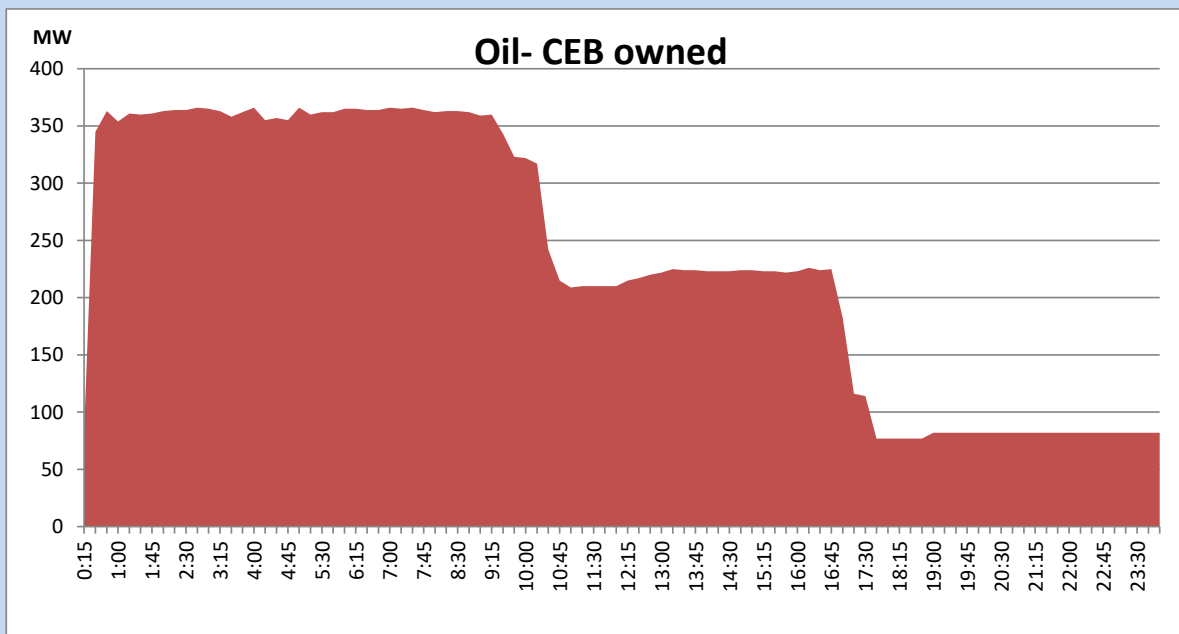
Coal Generation during the Previous day

March 31, 2022



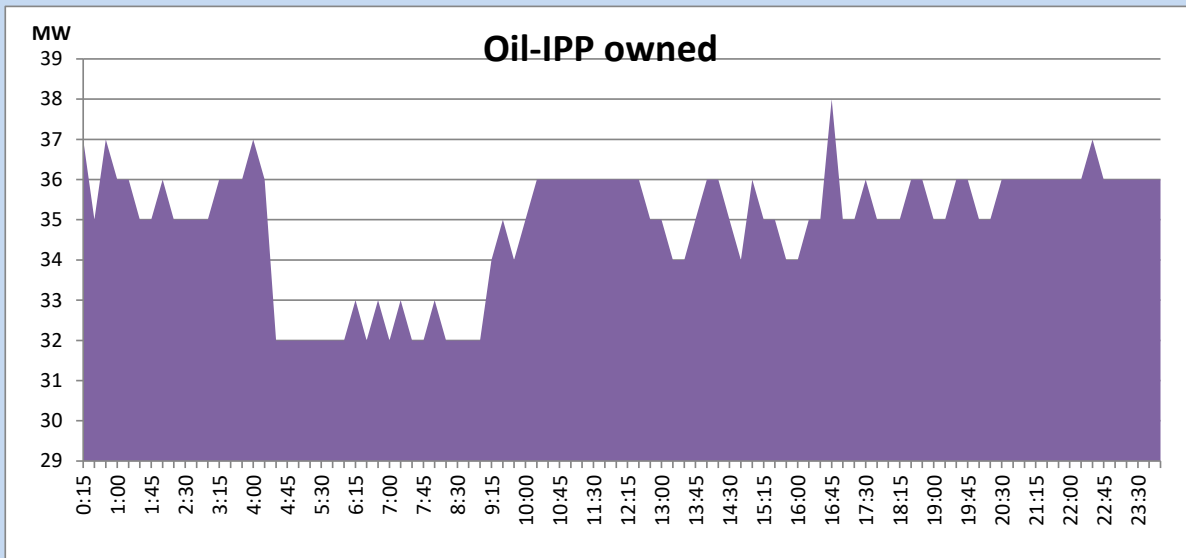
CEB Oil Plant Generation during the Previous day

March 31, 2022



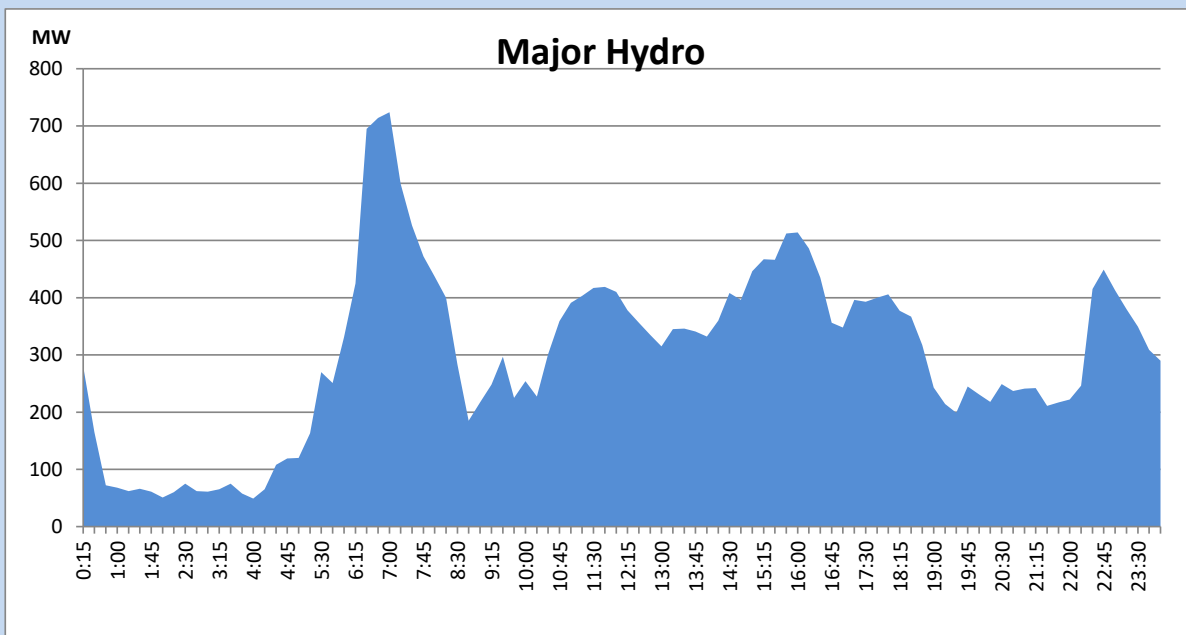
IPP Oil Plant Generation during the Previous day

March 31, 2022



Major Hydro Generation during the Previous day

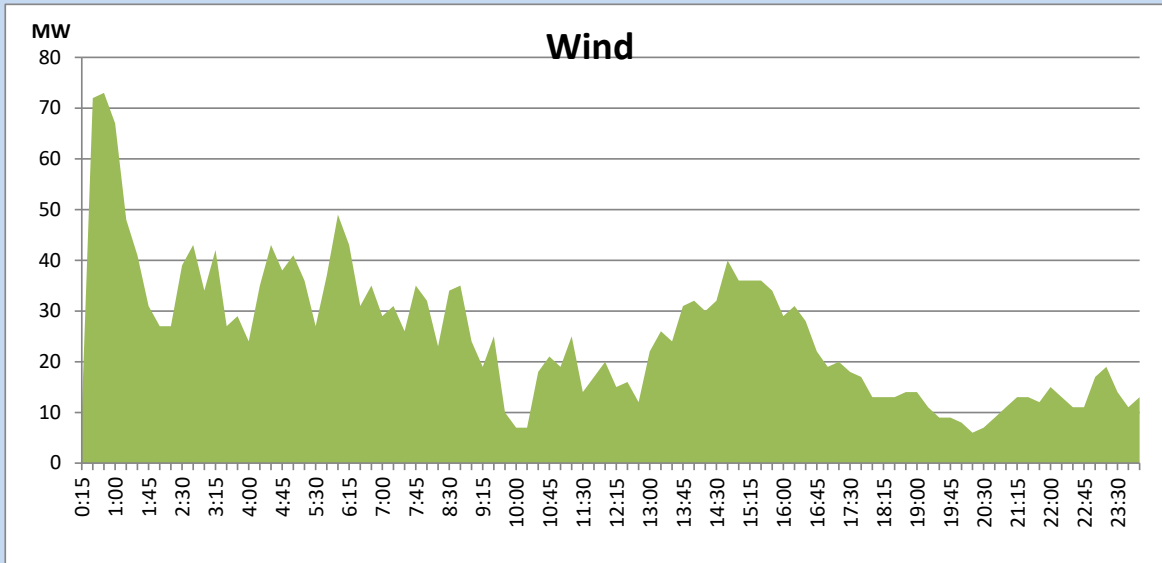
March 31, 2022



Wind Generation during the Previous day

March 31, 2022

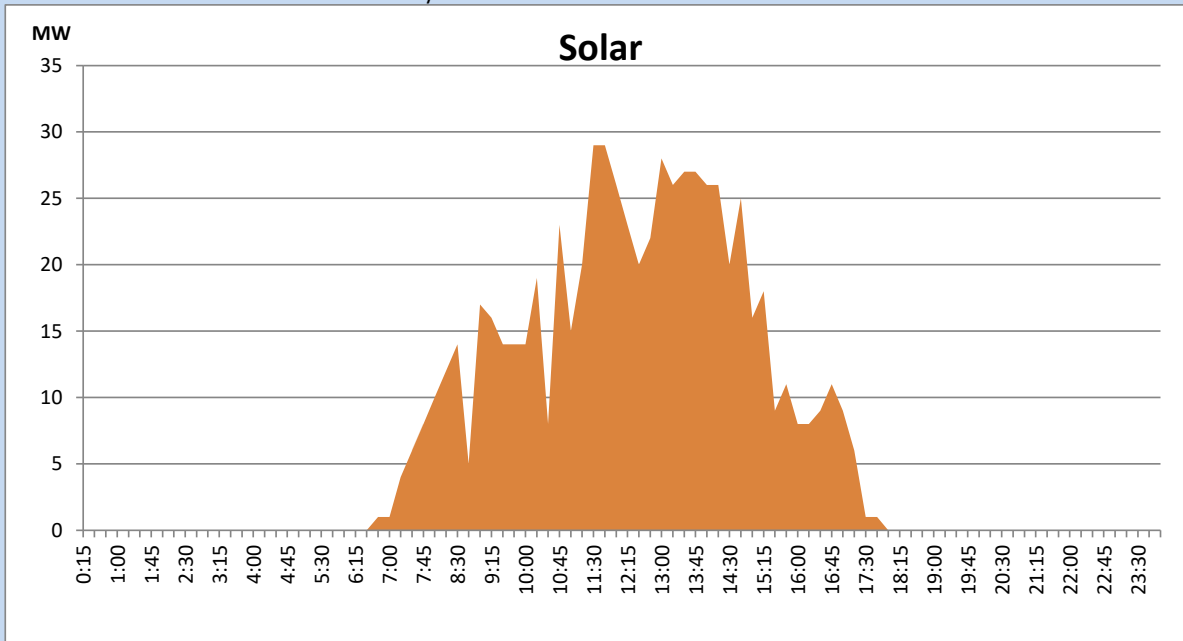
Based on Telemetered Power Stations only



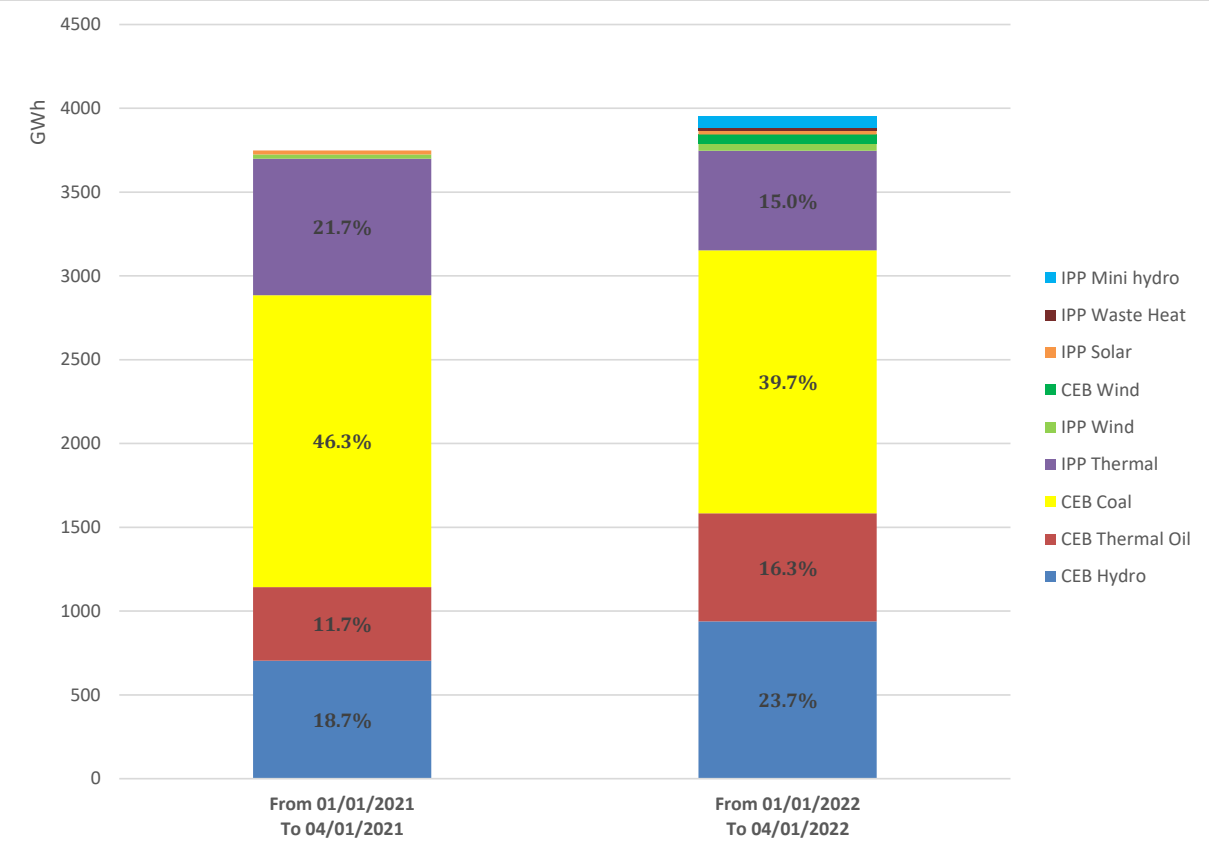
Solar Generation during the Previous day

March 31, 2022

Based on Telemetered Power Stations only



Cumulative Dispatch Comparison with Last Year



Thermal Plant Fuel types

Power Station	Primary Fuel
CEB Thermal	
Sapugaskanda 1	Heavy Fuel
Sapugaskanda 2	Heavy Fuel
Kelanitissa Small Gas Turbines	Auto Diesel
GT 7 - Kelanitissa	Auto Diesel
Kelanitissa CCY	Naphtha & Diesel
Lakvijaya 1	Coal
Lakvijaya 2	Coal
Lakvijaya 3	Coal
Uthuru Janani	Heavy Fuel
Barge CEB	Heavy Fuel

Power Station	Primary Fuel
Private Thermal	
Sojitz - Kelanitissa	Auto Diesel
West Coast	Heavy Fuel

Major Incidents during the day -as reported by CEB morning of

April 2, 2022

- 1) Rotational manual load shedding was carried out from 04:00hrs to 24:00hrs.
- 2) Sub C 132/11kV T/F 01 tripped at 5:53 hrs on 02/04/2022 with indication general protection trip and external protection trip. The T/F is yet to normalize.