

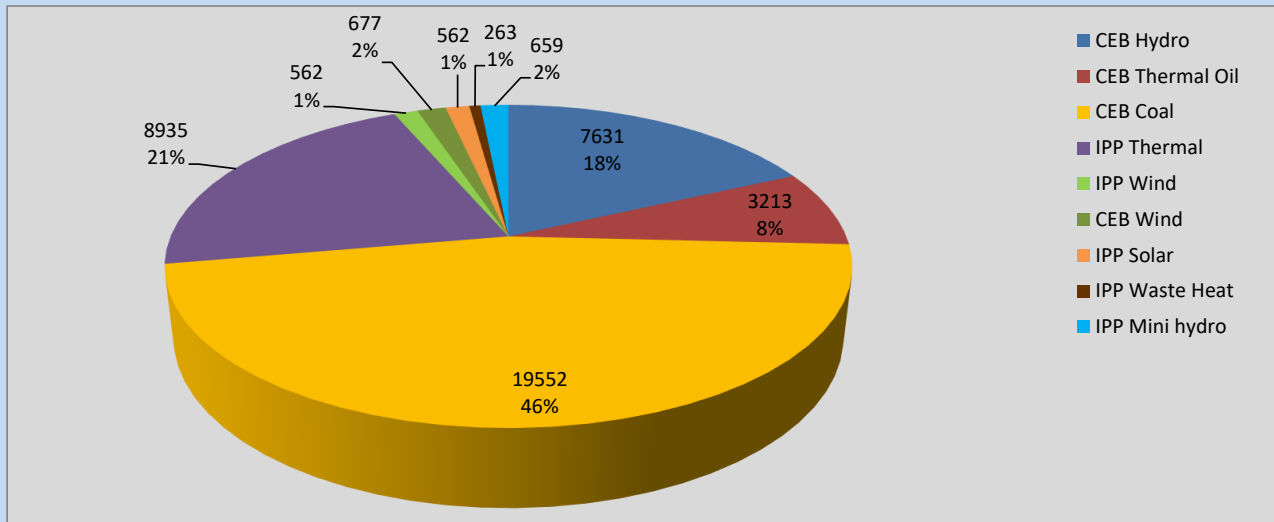
Generation and Reservoirs Statistics

February 28, 2022



PUBLIC UTILITIES COMMISSION OF SRI LANKA

Daily Generation Mix in MWh



Total Generation

41,923 MWh

Note: Above data is excluding contribution from Roof Top Solar, 1MW Solar and certain Mini Hydro plants

Cumulative Dispatch

Note: Following data is Excluding contribution from Roof Top Solar, 1MW solar and Mini Hydro plants

For Current Month

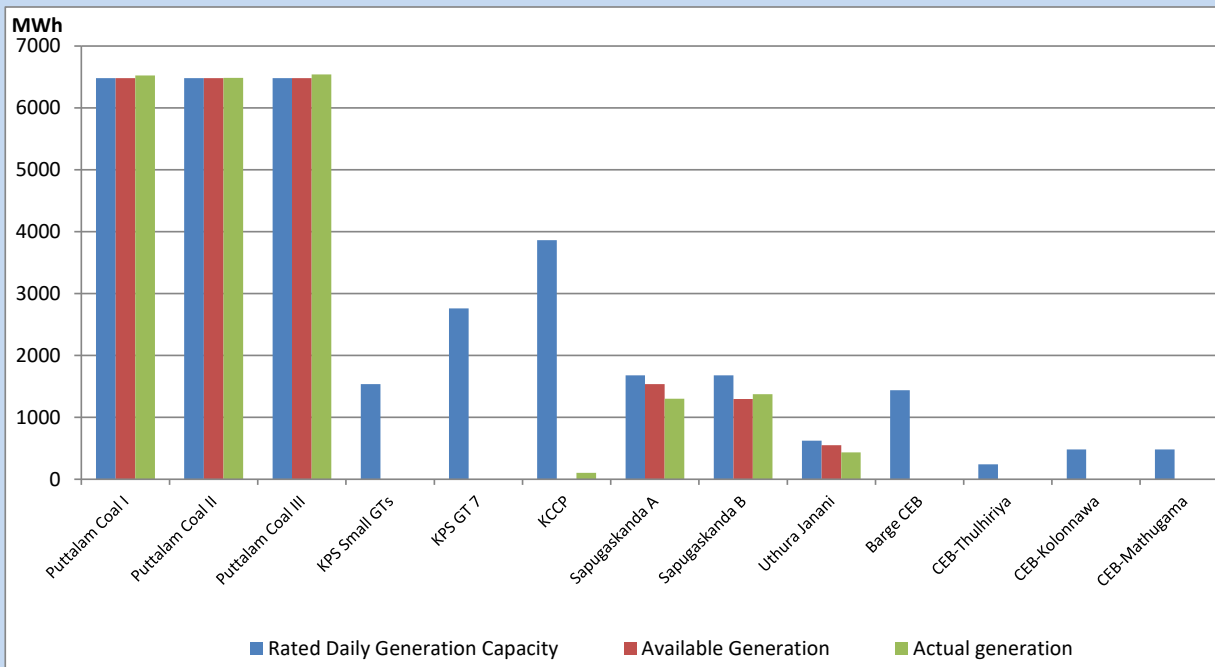
Category	Dispatch (GWh)	Percentage
CEB Hydro	270.5	22.12%
CEB Thermal Oil	168.1	13.74%
CEB Coal	536.3	43.85%
IPP Thermal	187.4	15.32%
SPP Wind	12.8	1.05%
CEB Wind	16.2	1.32%
SPP Solar	7.4	0.60%
SPP Solid Waste	3.0	0.24%
Mini Hydro	21.5	1.76%
Total	1,223.1	

For Current Year

Category	Dispatch (GWh)	Percentage
CEB Hydro	677.8	26.44%
CEB Thermal Oil	412.2	16.08%
CEB Coal	943.6	36.81%
IPP Thermal	391.4	15.27%
SPP Wind	28.1	1.10%
CEB Wind	34.3	1.34%
SPP Solar	15.3	0.60%
SPP Solid Waste	11.1	0.43%
Mini Hydro	49.7	1.94%
Total	2,563.2	

CEB owned Thermal Plant Dispatch

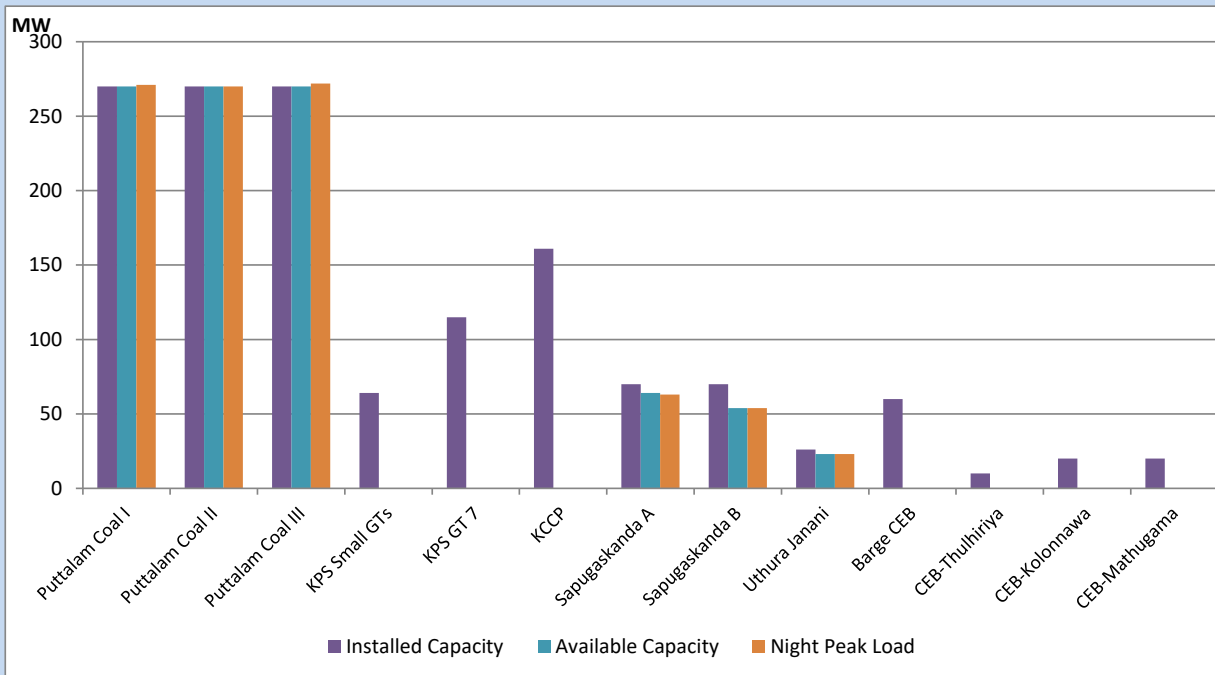
February 28, 2022



Available Generation is estimated based on plant availability at 6.00am on

March 1, 2022

CEB owned Thermal Plant Loading at the Night Peak



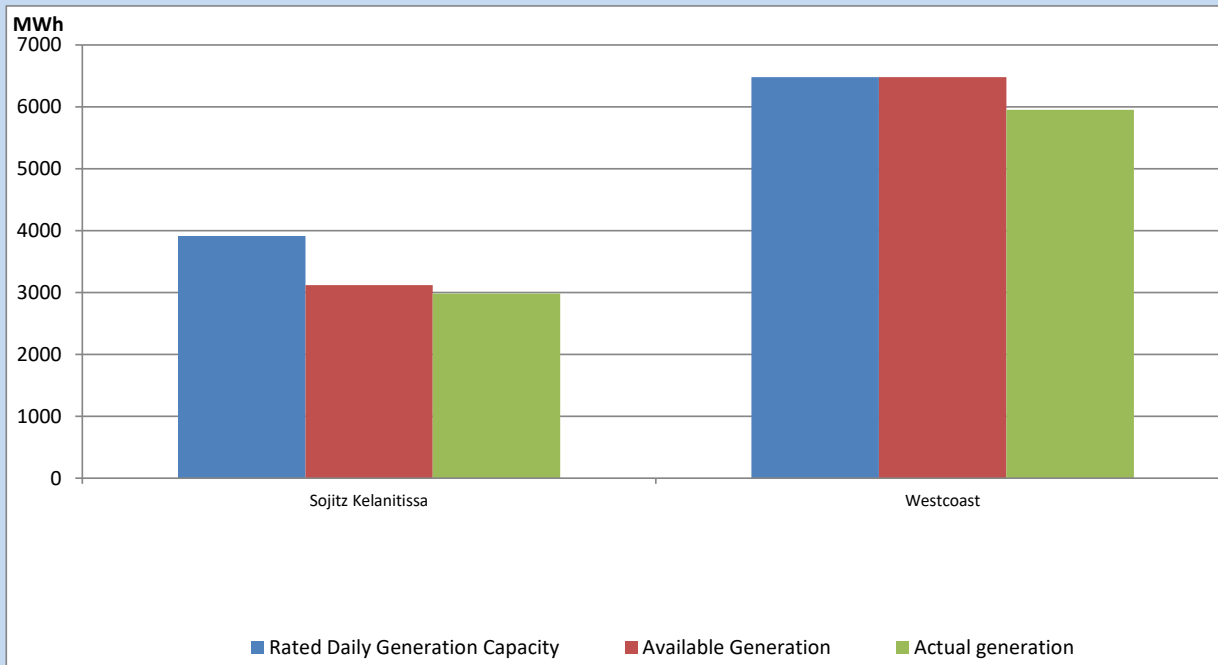
Note- Plant availability is recorded at 6.00 am on

March 1, 2022

IPP owned Thermal Plant Dispatch

February 28, 2022

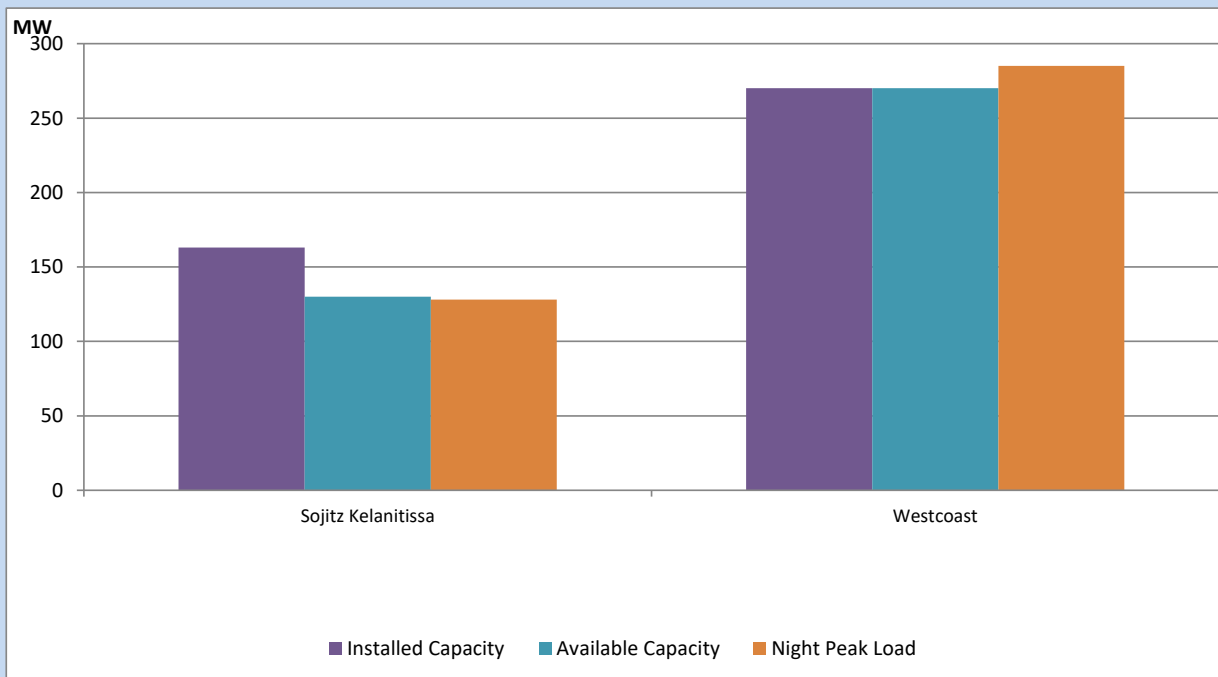
ACE Embilipitiya, ACE Matara, Asia Power, V Power Pallekale, Vpower Galle, V Power Horana, Vpower Hambantota, Vpower Valachchena and Altaqa Mahiyanganaya are not available due to expiration of PPAs



Available Generation is estimated based on plant availability at 6.00am on

March 1, 2022

IPP owned Thermal Plant Loading at the Night Peak

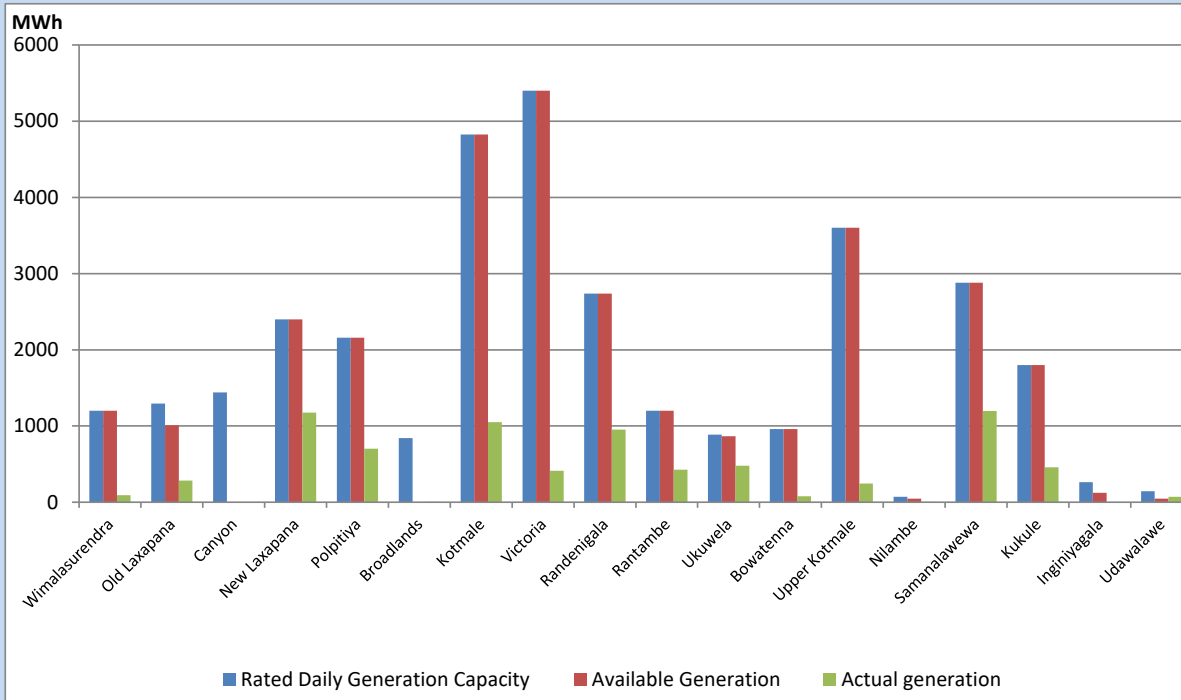


Note- Plant availability is recorded at 6.00 am on

March 1, 2022

Major Hydro Plant Dispatch

February 28, 2022

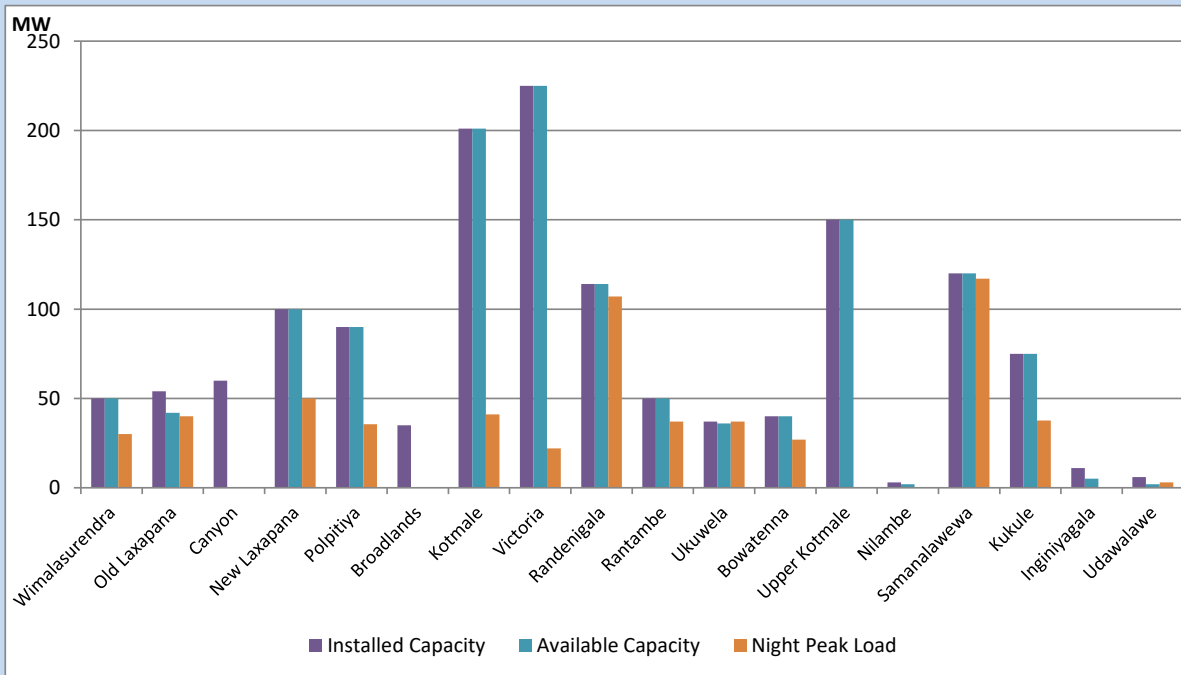


Available Generation is estimated based on plant availability at 6.00am on
Broadlands power plant is operating in the Commissioning Stage

March 1, 2022

Major Hydro Plant Loading at Night Peak

February 28, 2022



Note- Plant availability is recorded at 6.00 am on
Broadlands power plant is operating in the Commissioning Stage

March 1, 2022

Summary of Major Plant performance

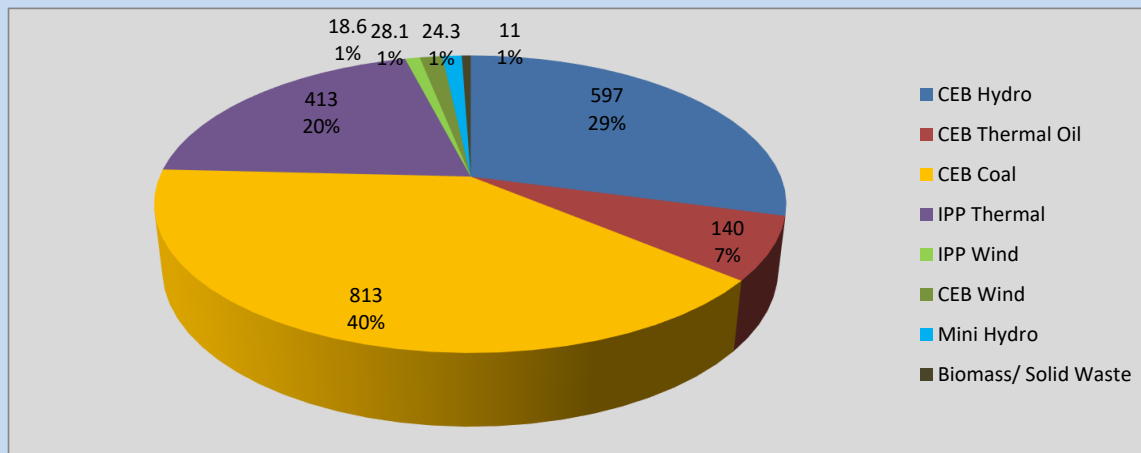
Plant	Installed Capacity	Plant Availability	Night peak Load	Plant Dispatch
	(MW)	(MW)	(MW)	(MWh)
Wimalasurendra	50	50	30	93
Old Laxapana	54	42	40	282
Canyon	60	0	0	0
New Laxapana	100	100	50	1,176
Polpitiya	90	90	36	703
Broadlands	35	0	0	5
Kotmale	201	201	41	1,050
Victoria	225	225	22	411
Randenigala	114	114	107	952
Rantambe	50	50	37	428
Ukuwela	37	36	37	478
Bowatenna	40	40	27	79
Upper Kotmale	150	150	0	246
Nilambe	3	2	0	2
Samanalawewa	120	120	117	1,197
Kukule	75	75	38	457
Inginiyagala	11	5	0	0
Udawalawe	6	2	3	72
Puttalam Coal I	270	270	271	6,525
Puttalam Coal II	270	270	270	6,484
Puttalam Coal III	270	270	272	6,543
KPS Small GTs	64	0	0	0
KPS GT 7	115	0	0	0
KCCP	161	0	0	106
Sapugaskanda A	70	64	63	1,300
Sapugaskanda B	70	54	54	1,373
Uthura Janani	26	23	23	434
Barge CEB	60	0	0	0
CEB-Thulhiriya	10	0	0	0
CEB-Kolonnawa	20	0	0	0
CEB-Mathugama	20	0	0	0
Sojitz Kelanitissa	163	130	128	2,984
West Coast	270	270	285	5,951
Total	3,280	2,653	2,032	41,923

Plant availability is the availability recorded at 6 am on

March 1, 2022

Contribution to the Night Peak in MW

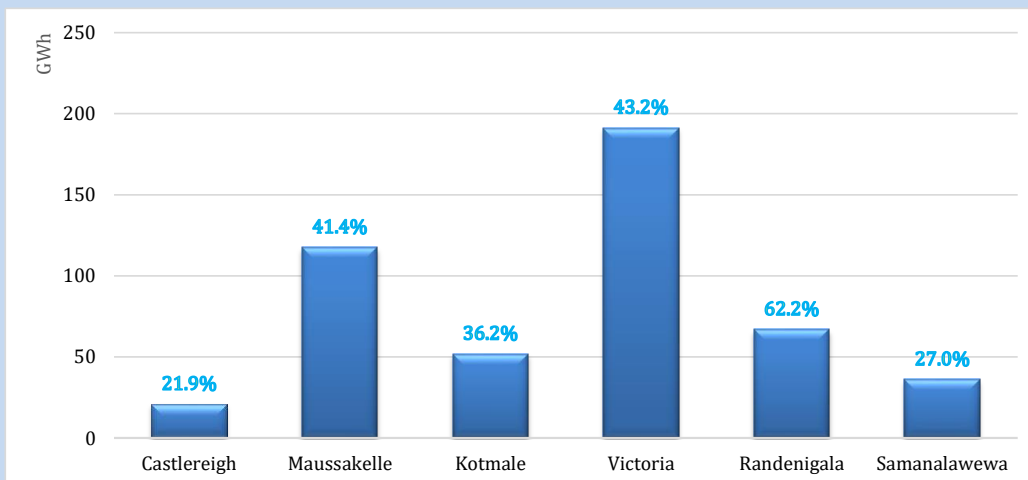
February 28, 2022



Night Peak*	2,045.1 MW
Day Peak	1,842.9 MW
Minimum Demand	1,322.4 MW

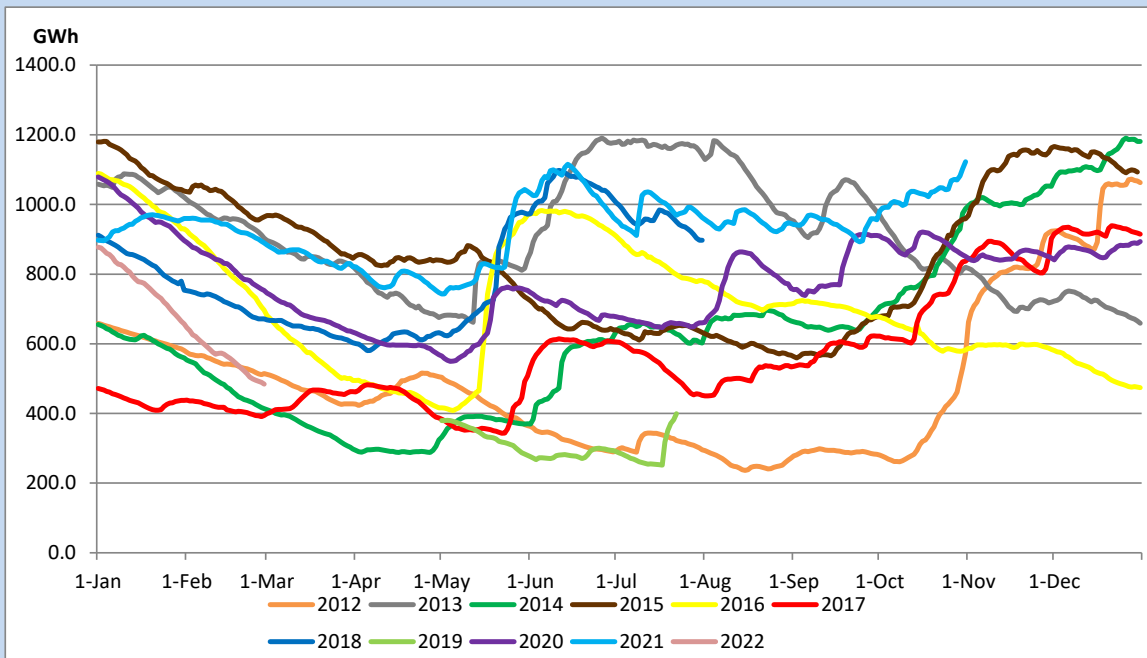
Above figures are excluding contribution from Roof Top Solar, 1MW solar, certain Wind plants and Mini Hydro plants

Reservoir Levels - as at 06.00 Hr on March 1, 2022



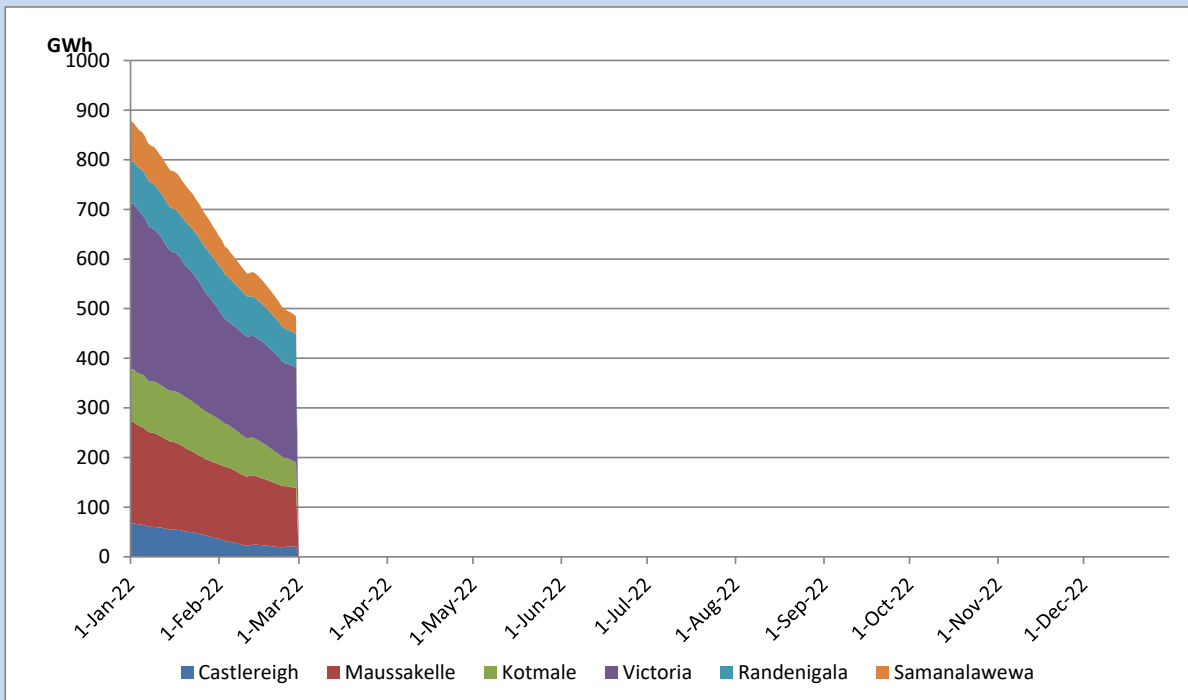
Total Reservoir Level	484.3 GWh
% of Total capacity	38.7%

Comparison of Total Reservoir Storage Levels with Past Years

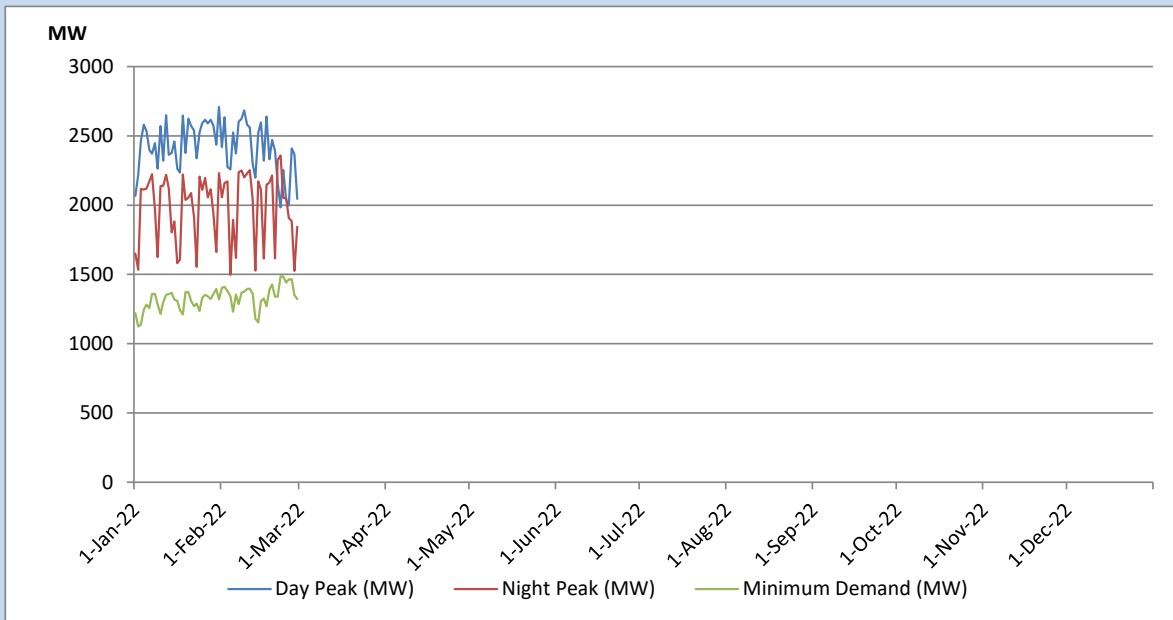


Data for 2018 and 2019 are only available for part of year.

Variation of Major Hydro Reservoir Levels in the current year (GWh)



Variation of Demand during the current year

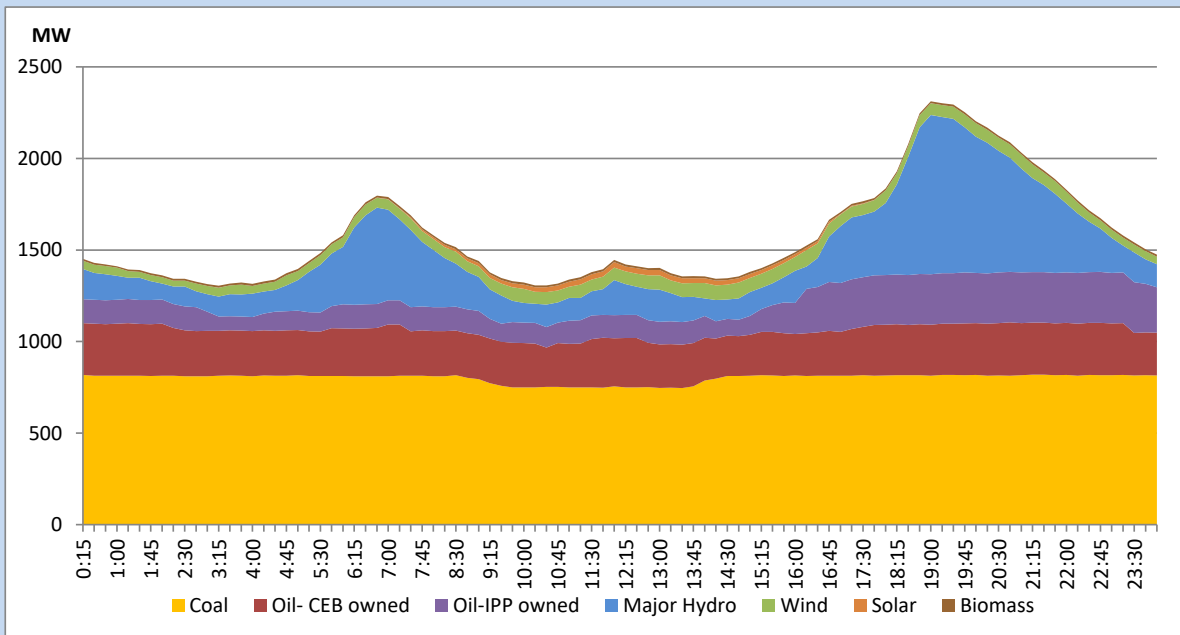


The above figures are excluding contribution from Roof Top Solar, 1MW solar, certain Wind plants and Mini Hydro plants

Daily Load Curve of the Previous day

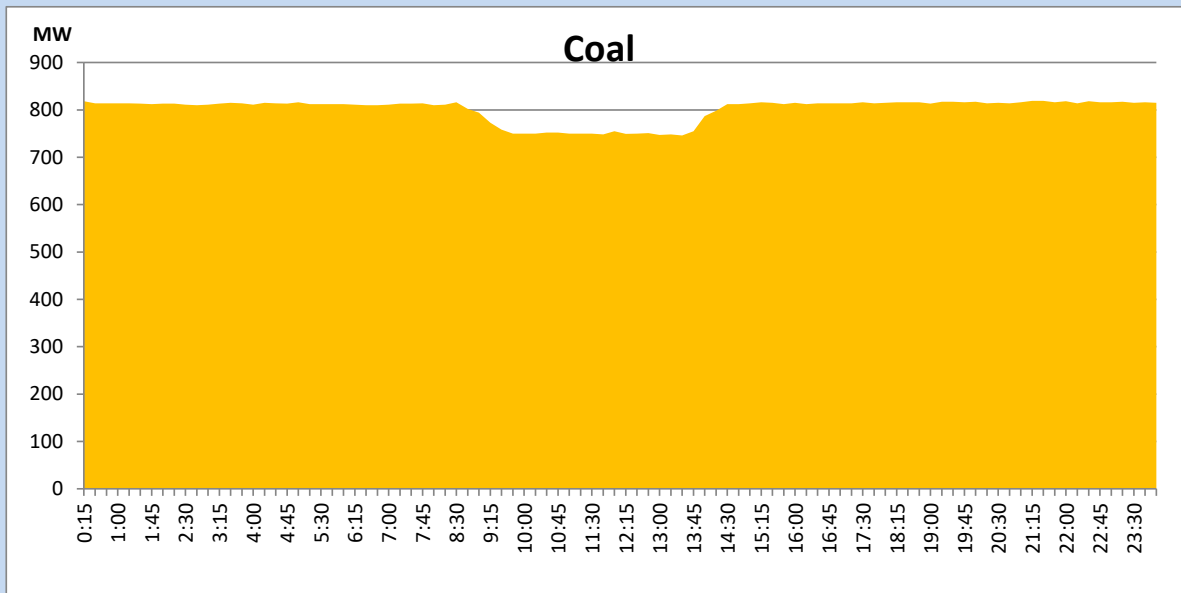
February 27, 2022

Solar and wind data is based on Telemetered Power Stations only



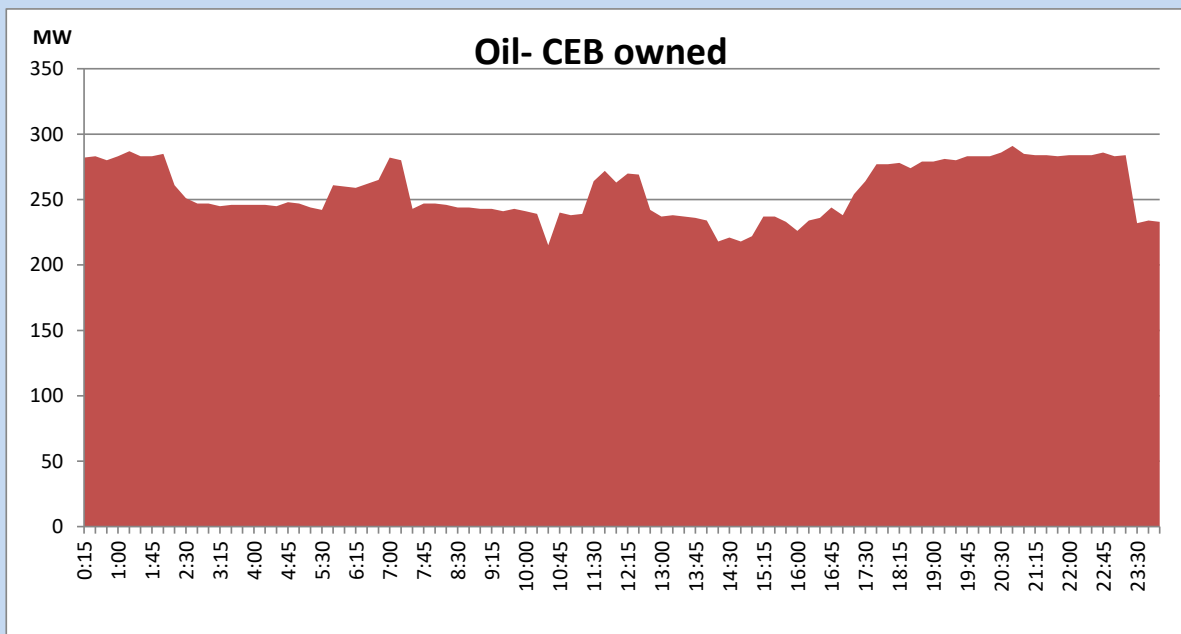
Coal Generation during the Previous day

February 27, 2022



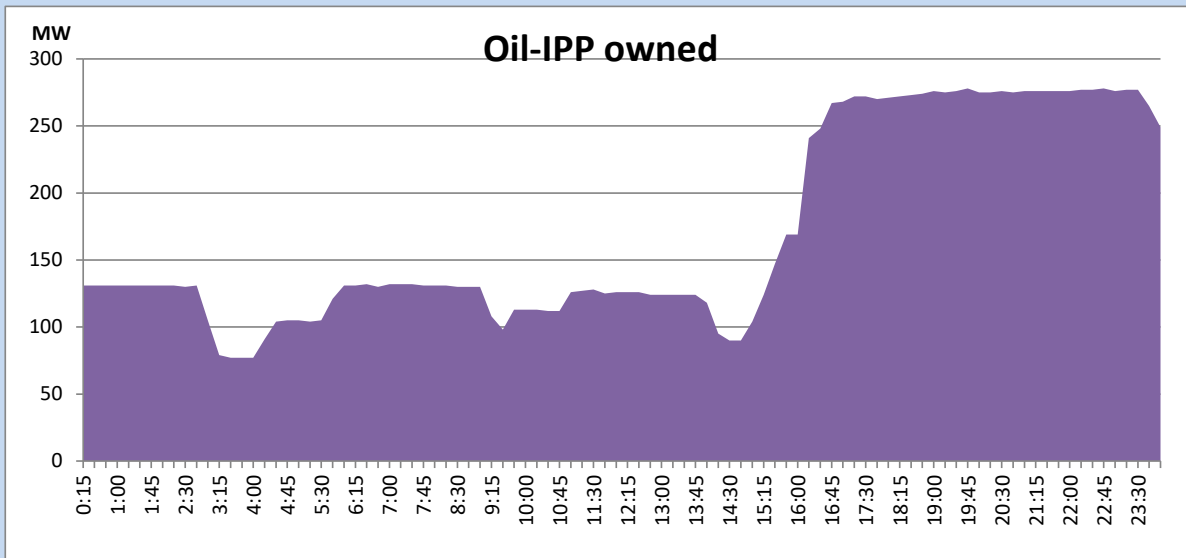
CEB Oil Plant Generation during the Previous day

February 27, 2022



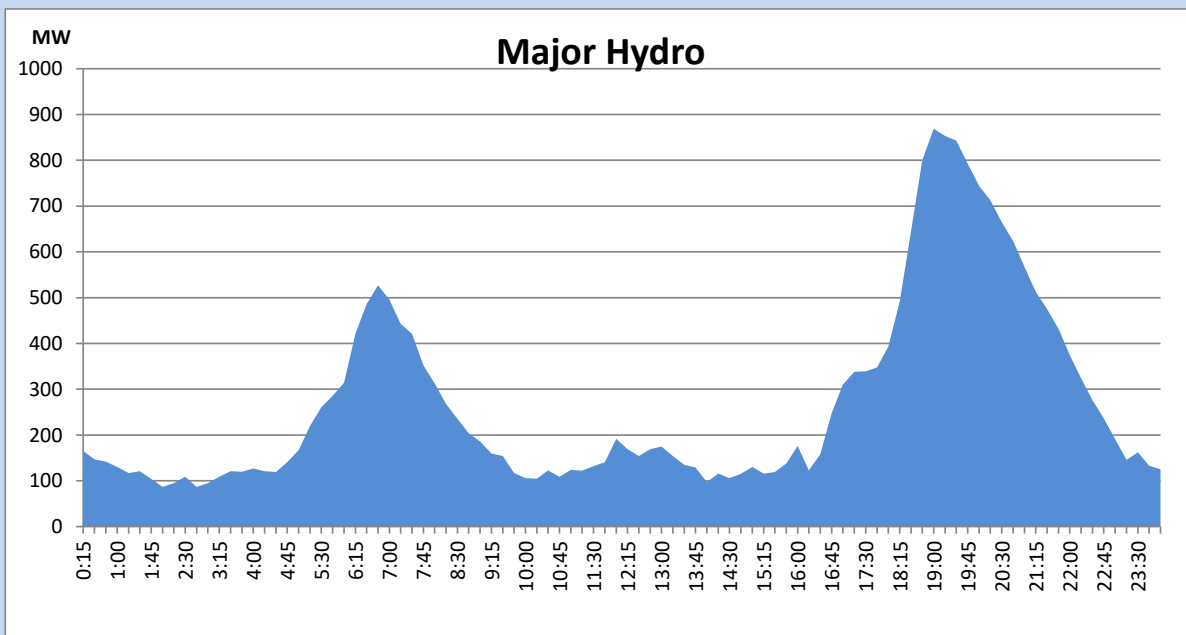
IPP Oil Plant Generation during the Previous day

February 27, 2022



Major Hydro Generation during the Previous day

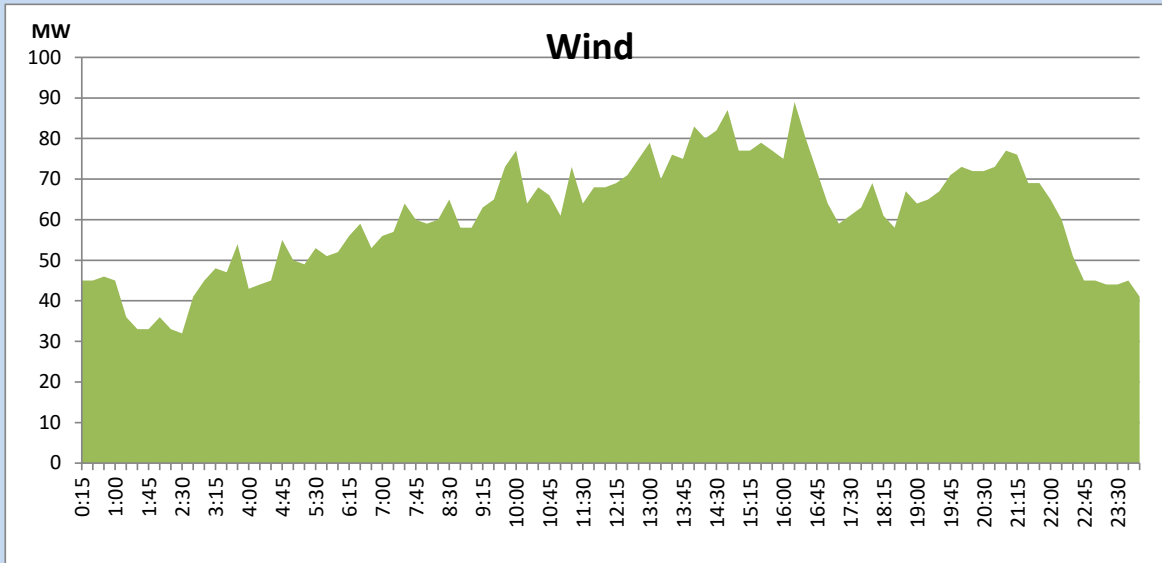
February 27, 2022



Wind Generation during the Previous day

February 27, 2022

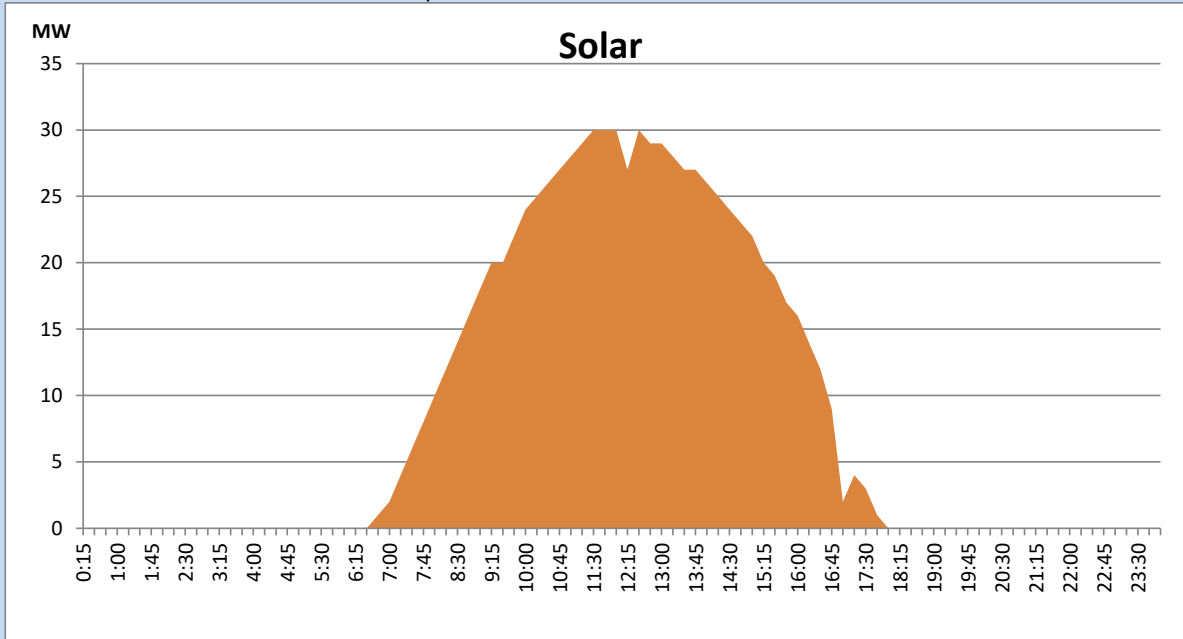
Based on Telemetered Power Stations only



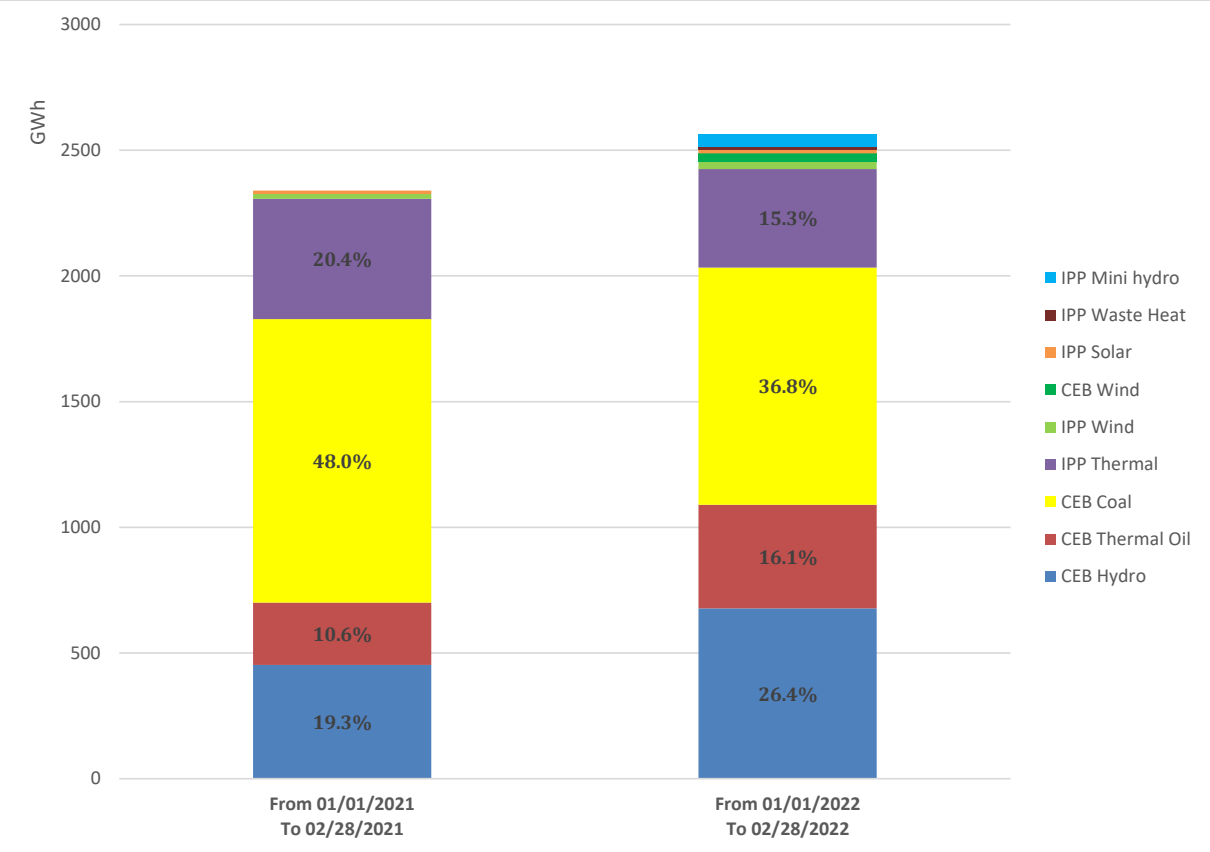
Solar Generation during the Previous day

February 27, 2022

Based on Telemetered Power Stations only



Cumulative Dispatch Comparison with Last Year



Thermal Plant Fuel types

Power Station	Primary Fuel
CEB Thermal	
Sapugaskanda 1	Heavy Fuel
Sapugaskanda 2	Heavy Fuel
Kelanitissa Small Gas Turbines	Auto Diesel
GT 7 - Kelanitissa	Auto Diesel
Kelanitissa CCY	Naphtha & Diesel
Lakvijaya 1	Coal
Lakvijaya 2	Coal
Lakvijaya 3	Coal
Uthuru Janani	Heavy Fuel
Barge CEB	Heavy Fuel

Power Station	Primary Fuel
Private Thermal	
Sojitz - Kelanitissa	Auto Diesel
West Coast	Auto Diesel

Major Incidents during the day -as reported by CEB morning of

March 1, 2022

- 1) Rotational manual load shedding was carried out from 08:30hrs to 22:30hrs .