

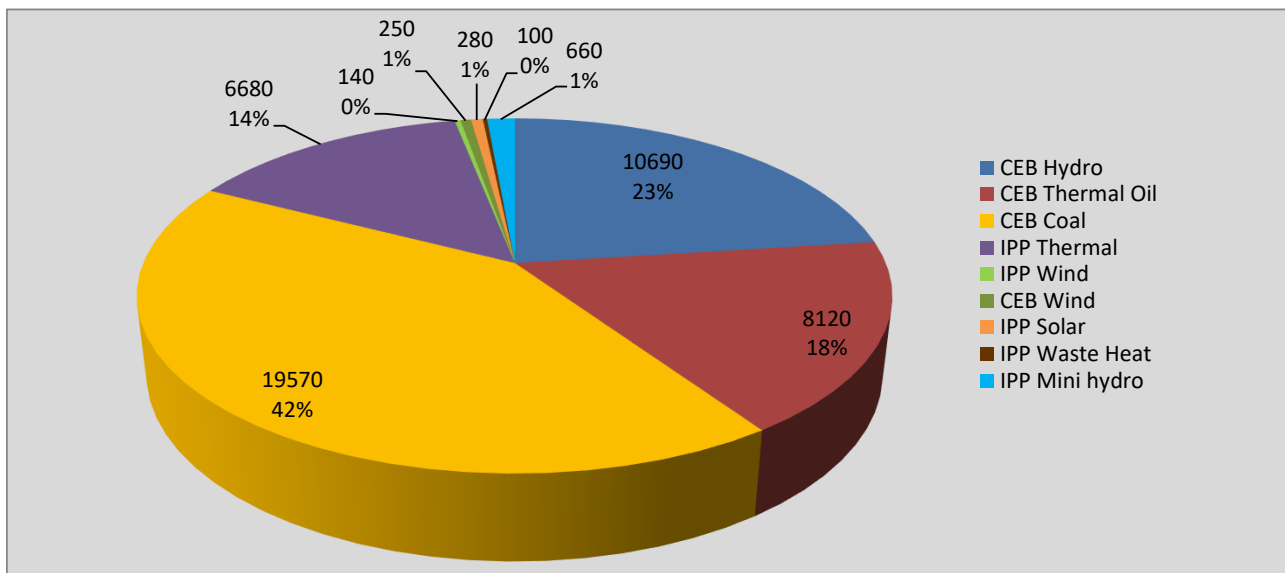
Generation and Reservoirs Statistics

February 22, 2022



PUBLIC UTILITIES COMMISSION OF SRI LANKA

Daily Generation Mix in MWh



Total Generation 46,490 MWh

Note: Above data is excluding contribution from Roof Top Solar, 1MW Solar and certain Mini Hydro plants

Cumulative Dispatch

Note: Following data is Excluding contribution from Roof Top Solar, 1MW solar and Mini Hydro plants

For Current Month

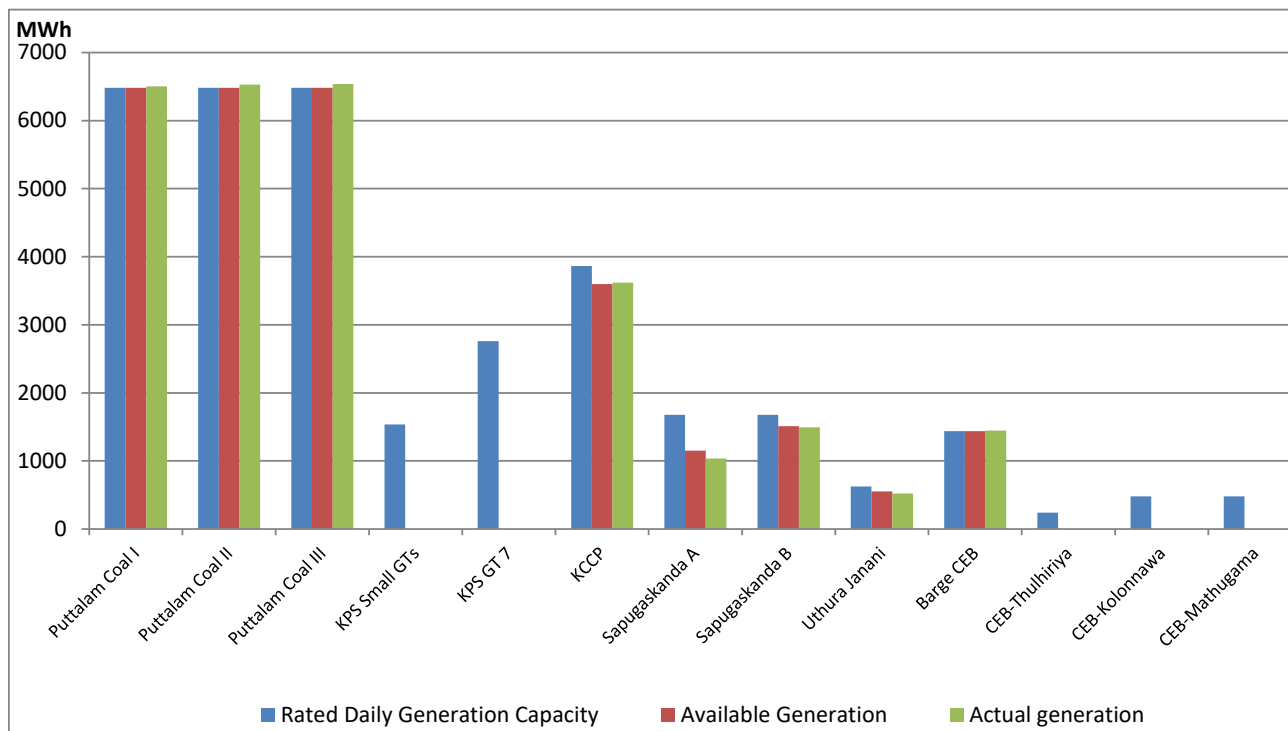
Category	Dispatch (GWh)	Percentage
CEB Hydro	220.5	22.81%
CEB Thermal Oil	138.4	14.32%
CEB Coal	419.4	43.40%
IPP Thermal	144.2	14.92%
SPP Wind	9.0	0.93%
CEB Wind	11.3	1.16%
SPP Solar	5.5	0.57%
SPP Solid Waste	1.5	0.15%
Mini Hydro	16.6	1.72%
Total	966.4	

For Current Year

Category	Dispatch (GWh)	Percentage
CEB Hydro	627.8	27.22%
CEB Thermal Oil	382.6	16.59%
CEB Coal	826.7	35.84%
IPP Thermal	348.3	15.10%
SPP Wind	24.3	1.06%
CEB Wind	29.4	1.27%
SPP Solar	13.4	0.58%
SPP Solid Waste	9.6	0.42%
Mini Hydro	44.8	1.94%
Total	2,306.6	

CEB owned Thermal Plant Dispatch

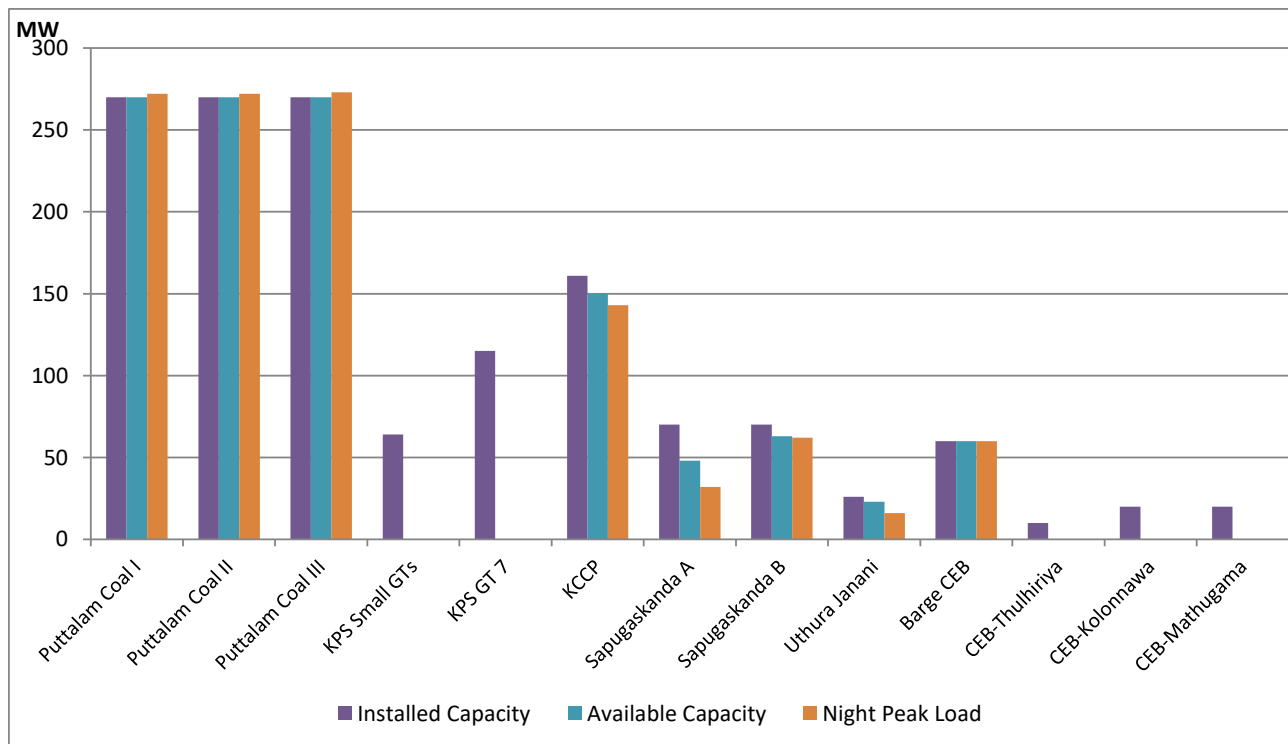
February 22, 2022



Available Generation is estimated based on plant availability at 6.00am on

February 23, 2022

CEB owned Thermal Plant Loading at the Night Peak



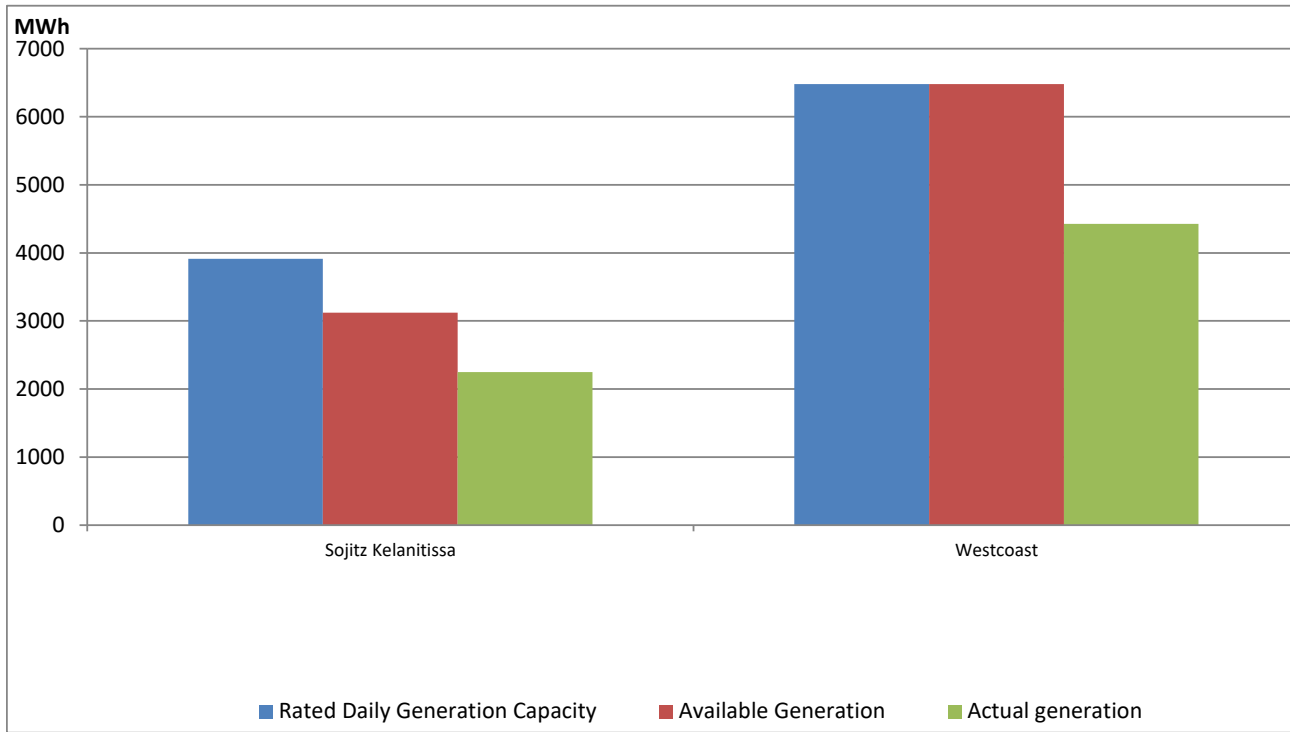
Note- Plant availability is recorded at 6.00 am on

February 23, 2022

IPP owned Thermal Plant Dispatch

February 22, 2022

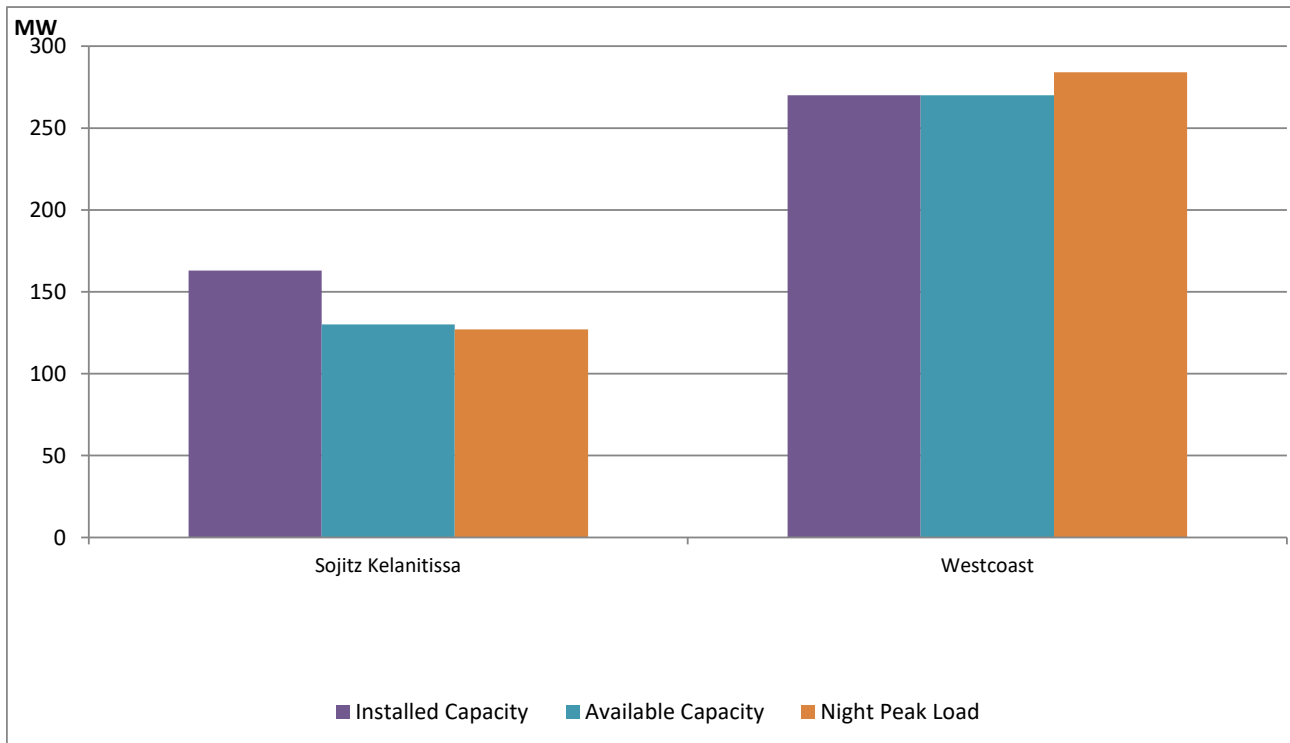
ACE Embilipitiya, ACE Matara, Asia Power, V Power Pallekale, Vpower Galle, V Power Horana, Vpower Hambantota, Vpower Valachchena and Altaqa Mahiyanganaya are not available due to expiration of PPAs



Available Generation is estimated based on plant availability at 6.00am on

February 23, 2022

IPP owned Thermal Plant Loading at the Night Peak

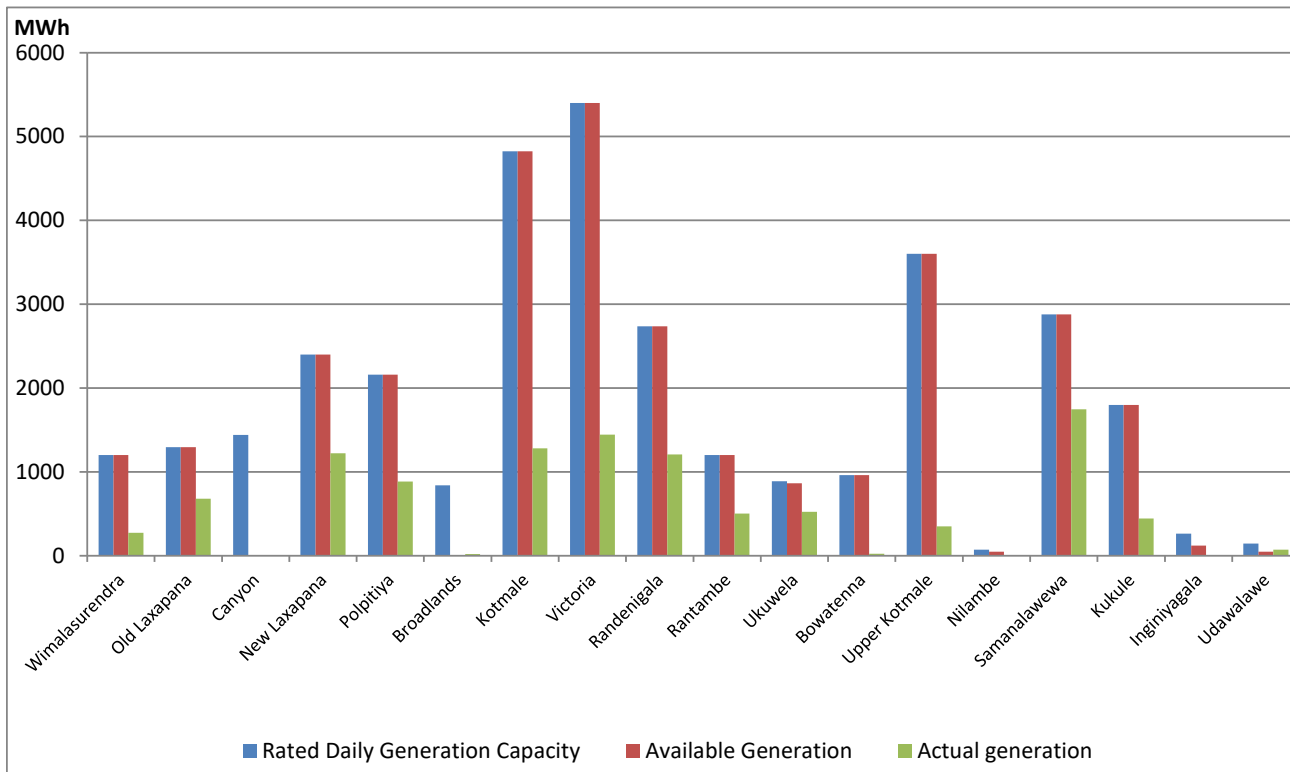


Note- Plant availability is recorded at 6.00 am on

February 23, 2022

Major Hydro Plant Dispatch

February 22, 2022

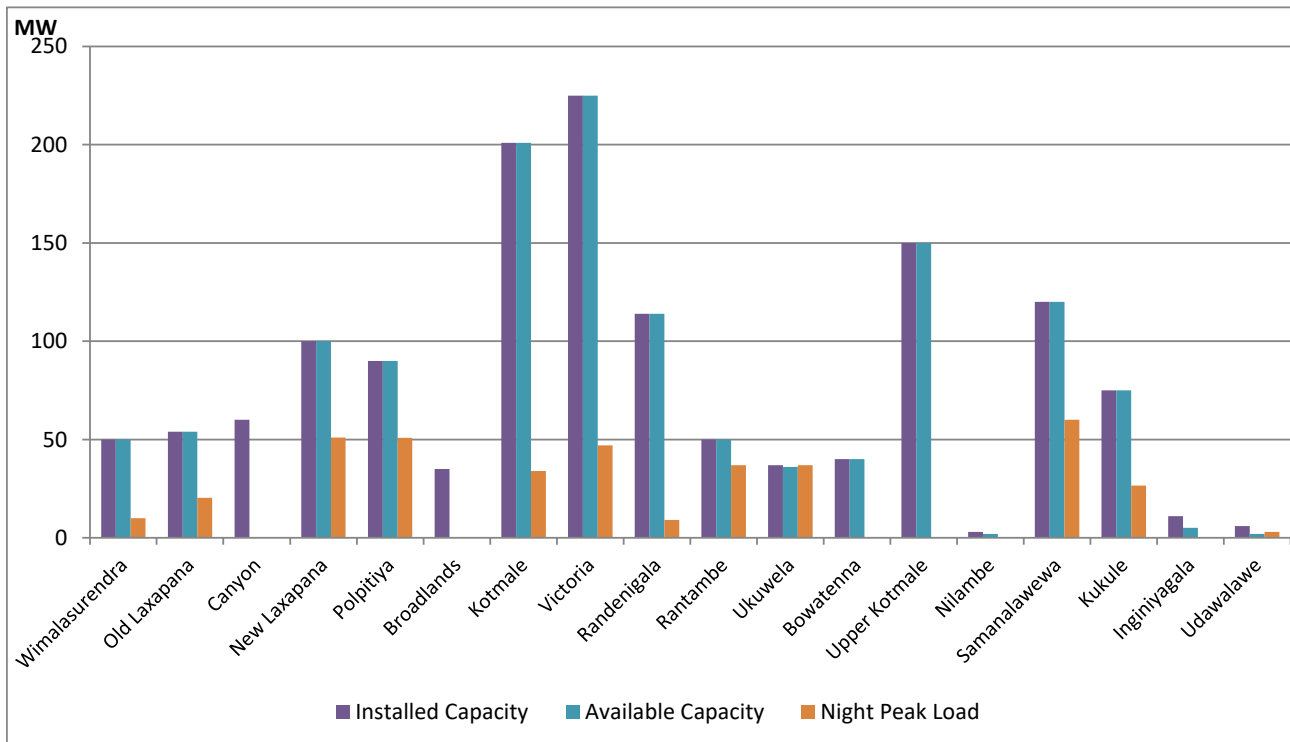


Available Generation is estimated based on plant availability at 6.00am on
Broadlands power plant is operating in the Commissioning Stage

February 23, 2022

Major Hydro Plant Loading at Night Peak

February 22, 2022



Note- Plant availability is recorded at 6.00 am on
Broadlands power plant is operating in the Commissioning Stage

February 23, 2022

Summary of Major Plant performance

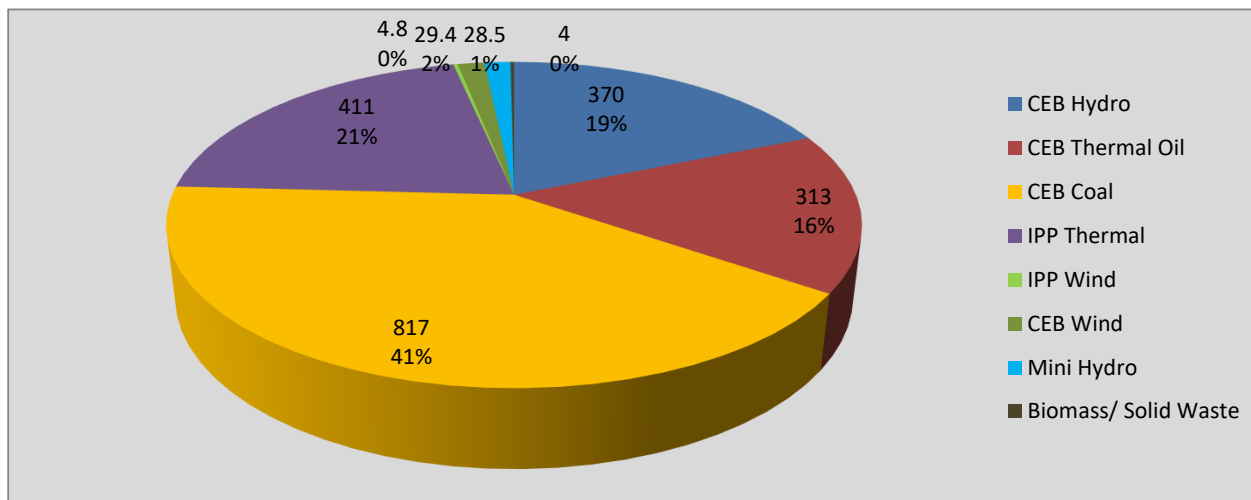
Plant	Installed Capacity (MW)	Plant Availability (MW)	Night peak Load (MW)	Plant Dispatch (MWh)
Wimalasurendra	50	50	10	275
Old Laxapana	54	54	20	681
Canyon	60	0	0	0
New Laxapana	100	100	51	1,222
Polpitiya	90	90	51	887
Broadlands	35	0	0	21
Kotmale	201	201	34	1,280
Victoria	225	225	47	1,445
Randenigala	114	114	9	1,210
Rantambe	50	50	37	502
Ukuwela	37	36	37	525
Bowatenna	40	40	0	24
Upper Kotmale	150	150	0	351
Nilambe	3	2	0	4
Samanalawewa	120	120	60	1,747
Kukule	75	75	27	445
Inginiyagala	11	5	0	0
Udawalawe	6	2	3	72
Puttalam Coal I	270	270	272	6,503
Puttalam Coal II	270	270	272	6,530
Puttalam Coal III	270	270	273	6,537
KPS Small GTs	64	0	0	0
KPS GT 7	115	0	0	0
KCCP	161	150	143	3,618
Sapugaskanda A	70	48	32	1,037
Sapugaskanda B	70	63	62	1,494
Uthura Janani	26	23	16	522
Barge CEB	60	60	60	1,447
CEB-Thulhiriya	10	0	0	0
CEB-Kolonnawa	20	0	0	0
CEB-Mathugama	20	0	0	0
Sojitz Kelanitissa	163	130	127	2,250
West Coast	270	270	284	4,427
Total	3,280	2,868	1,999	46,471

Plant availability is the availability recorded at 6 am on

February 23, 2022

Contribution to the Night Peak in MW

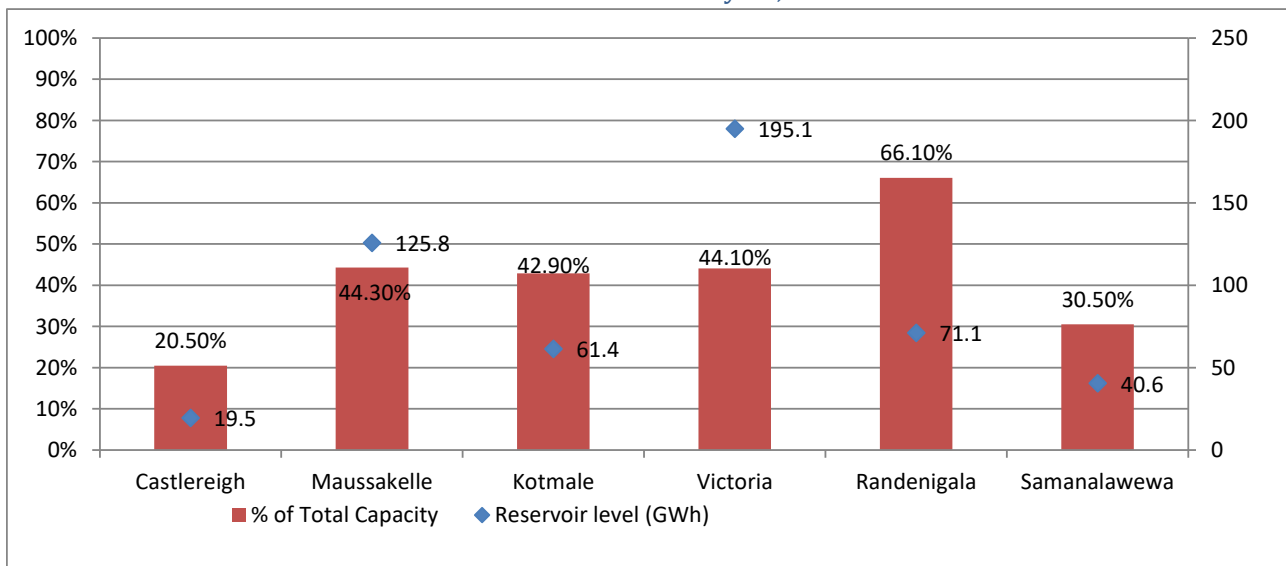
February 22, 2022



Night Peak*	1,983.2 MW
Day Peak	2,358.1 MW
Minimum Demand	1,485.9 MW

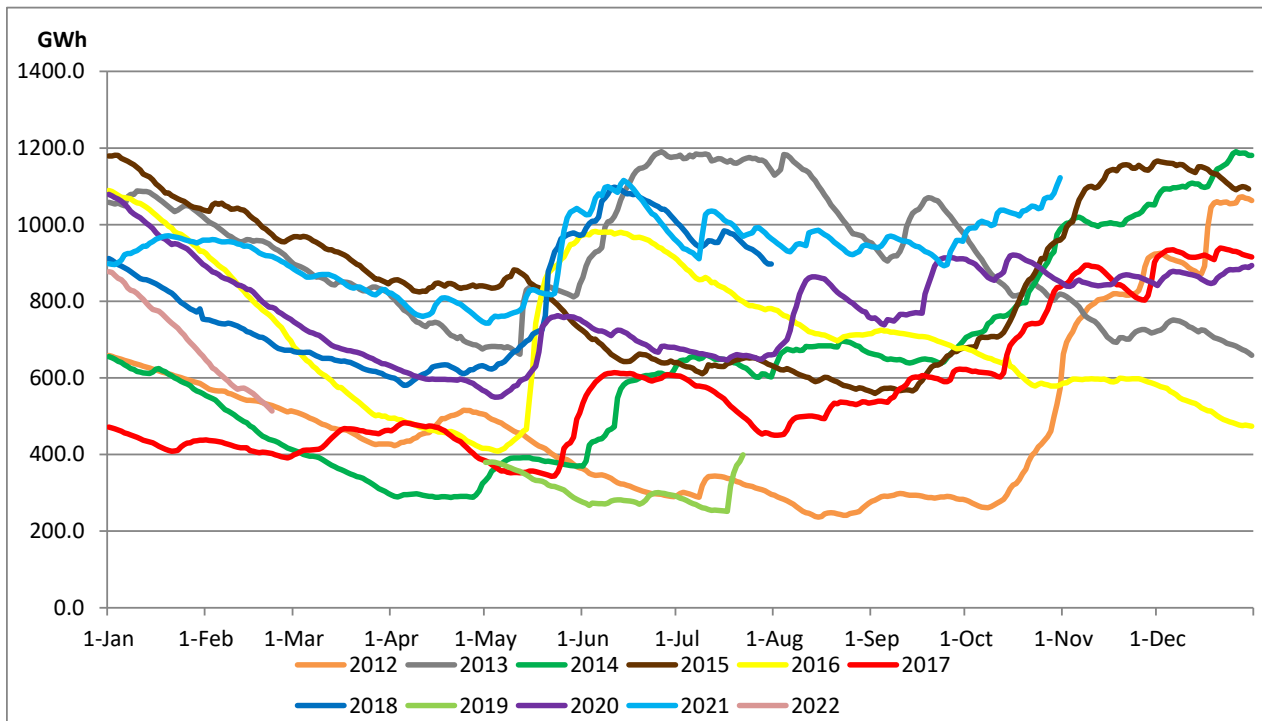
Above figures are excluding contribution from Roof Top Solar, 1MW solar, certain Wind plants and Mini Hydro plants

Reservoir Levels - as at 06.00 Hr on February 23, 2022



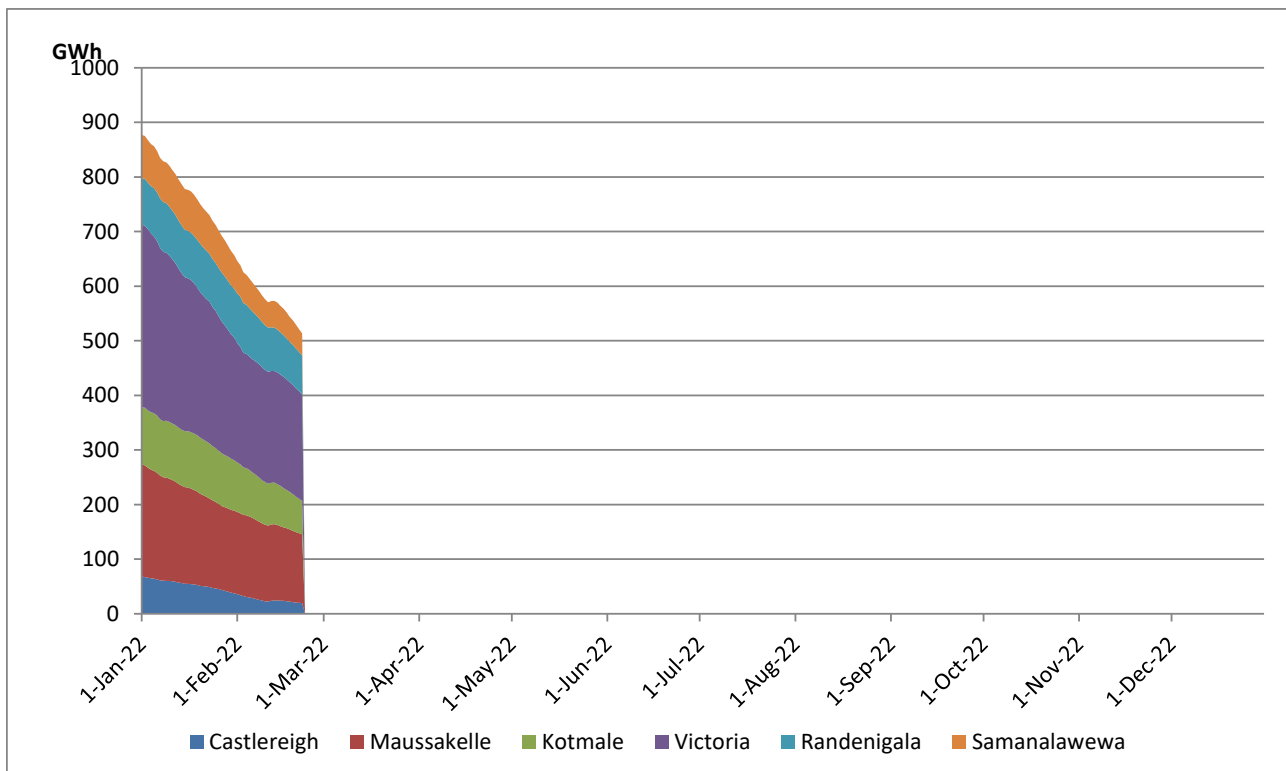
Total Reservoir Level(GWh)	513.5
% of Total capacity	41.4%

Comparison of Total Reservoir Storage Levels with Past Years

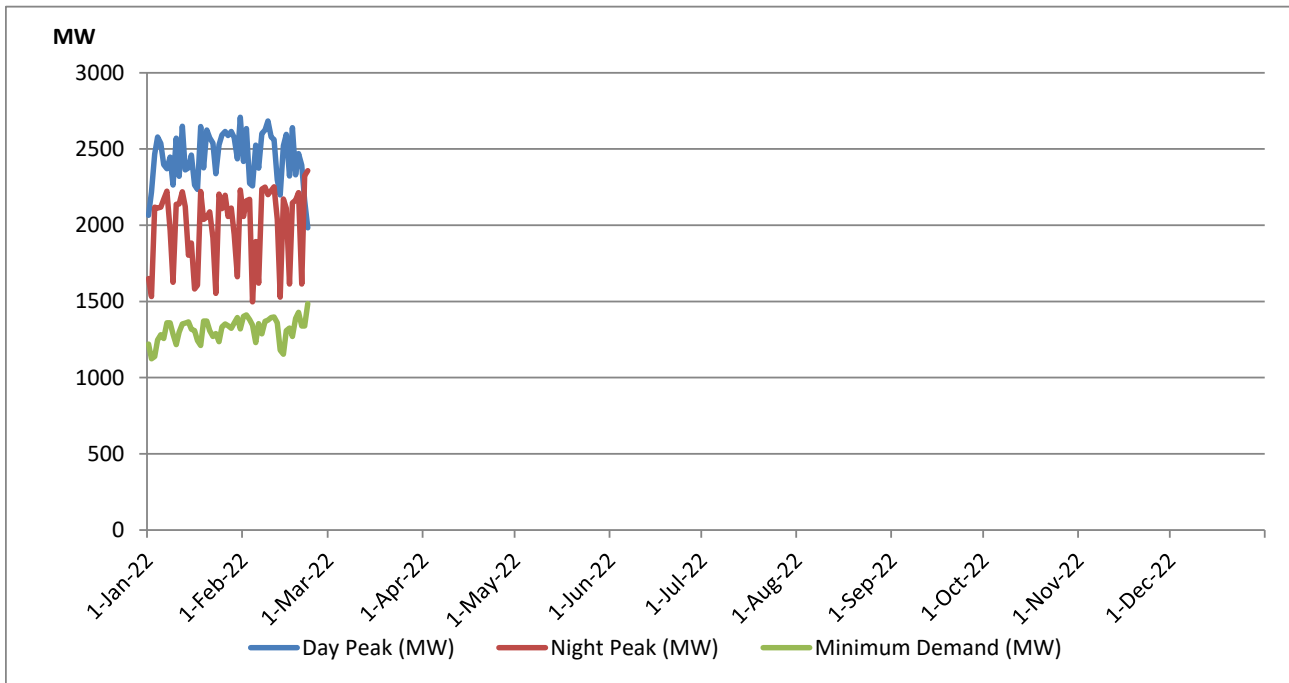


Data for 2018 and 2019 are only available for part of year.

Variation of Major Hydro Reservoir Levels in the current year (GWh)



Variation of Demand during the current year

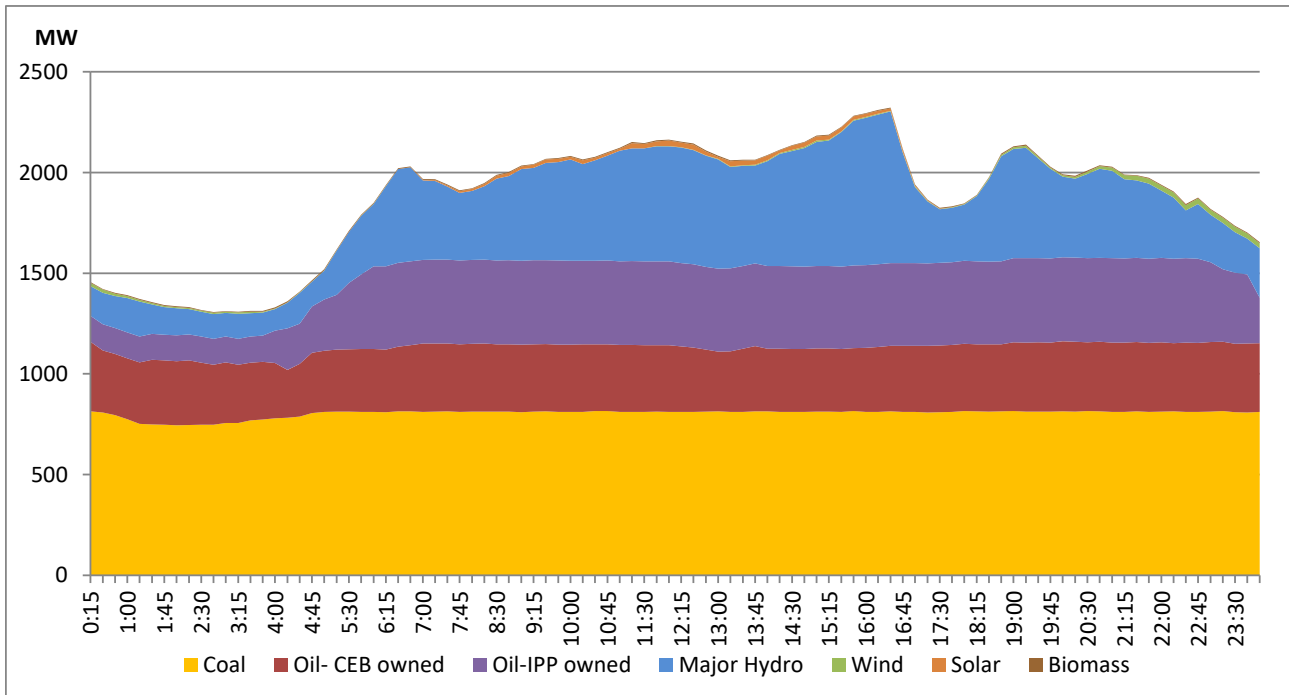


The above figures are excluding contribution from Roof Top Solar, 1MW solar, certain Wind plants and Mini Hydro plants

Daily Load Curve of the Previous day

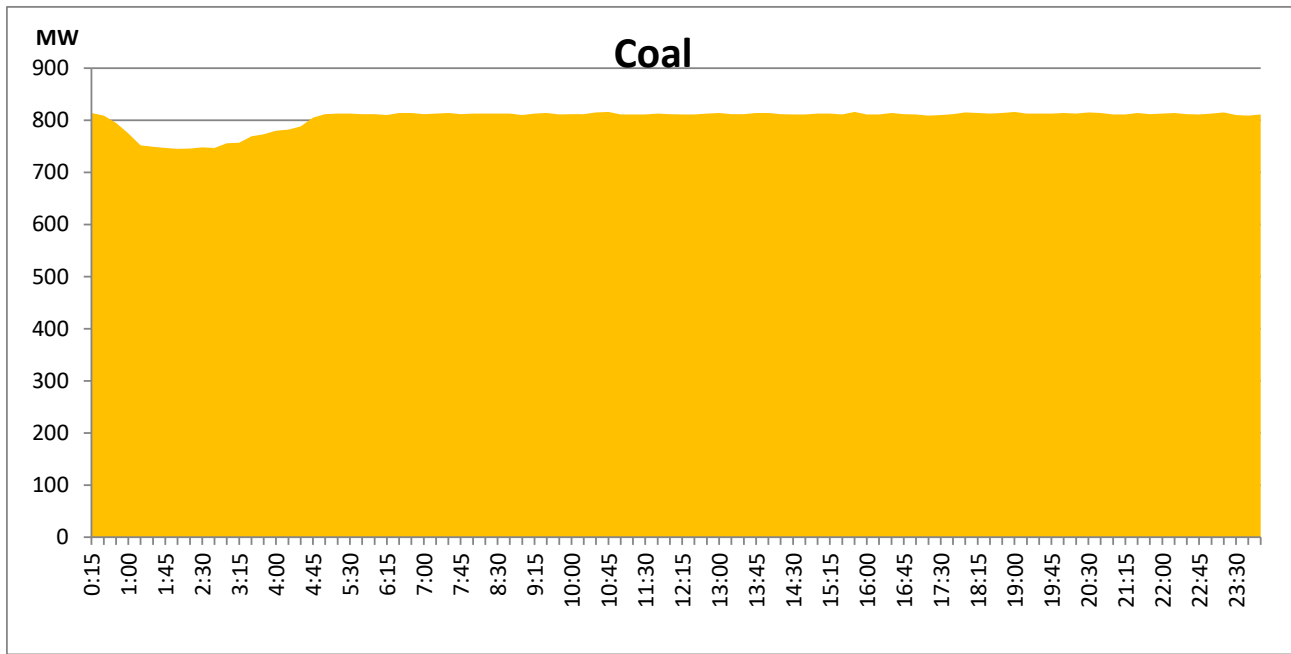
February 21, 2022

Solar and wind data is based on Telemetered Power Stations only



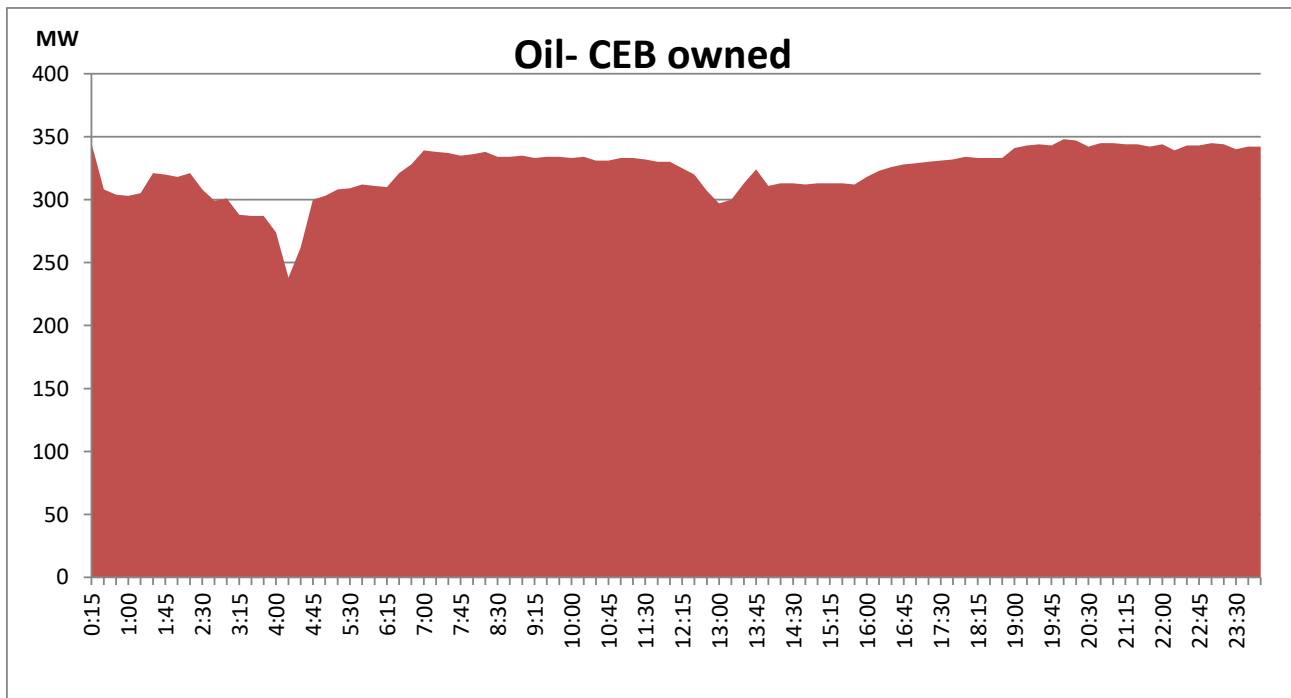
Coal Generation during the Previous day

February 21, 2022



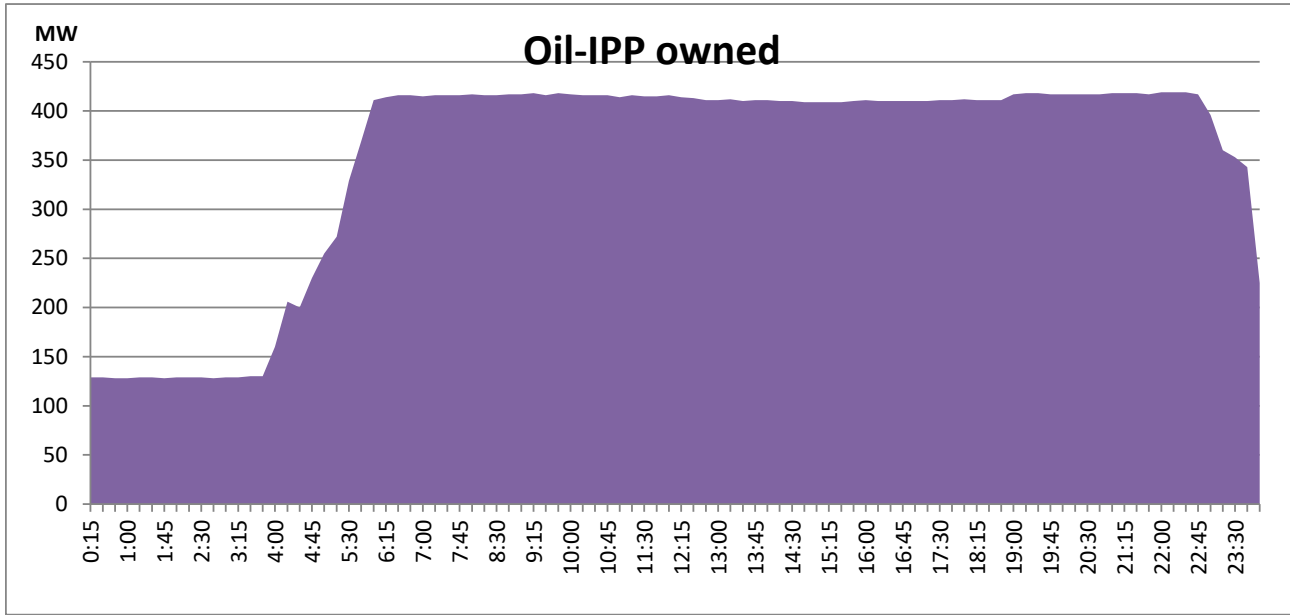
CEB Oil Plant Generation during the Previous day

February 21, 2022



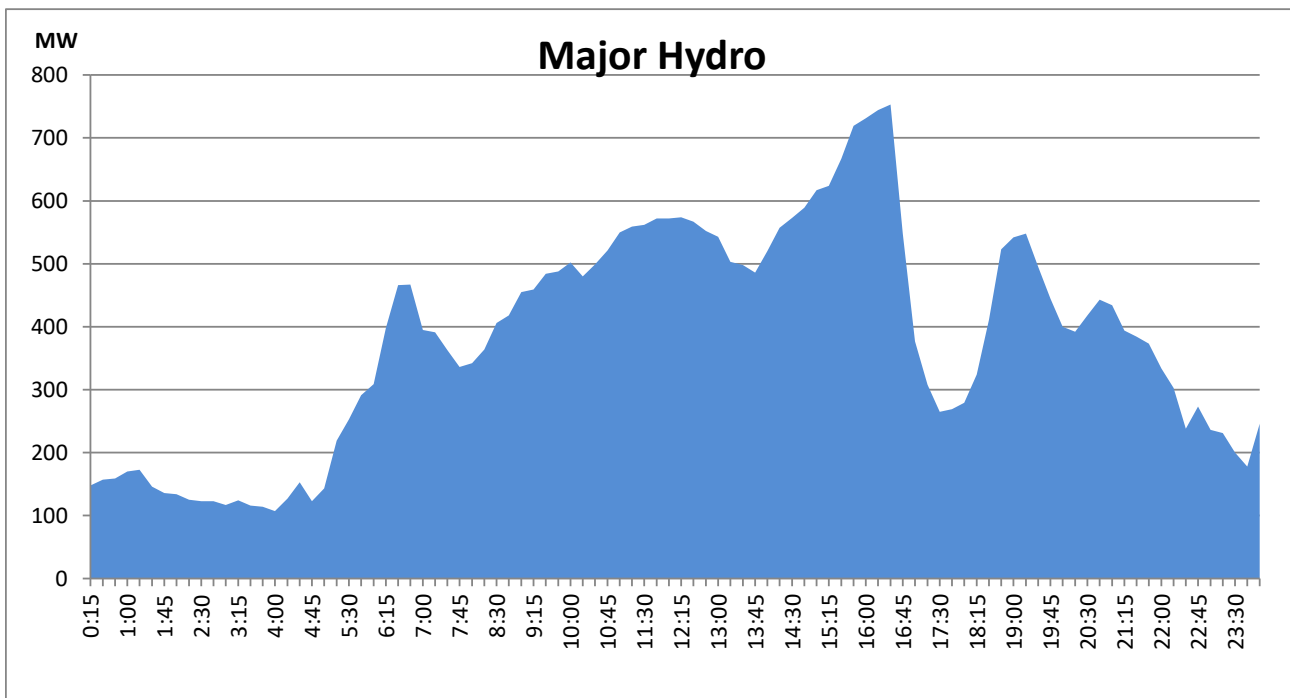
IPP Oil Plant Generation during the Previous day

February 21, 2022



Major Hydro Generation during the Previous day

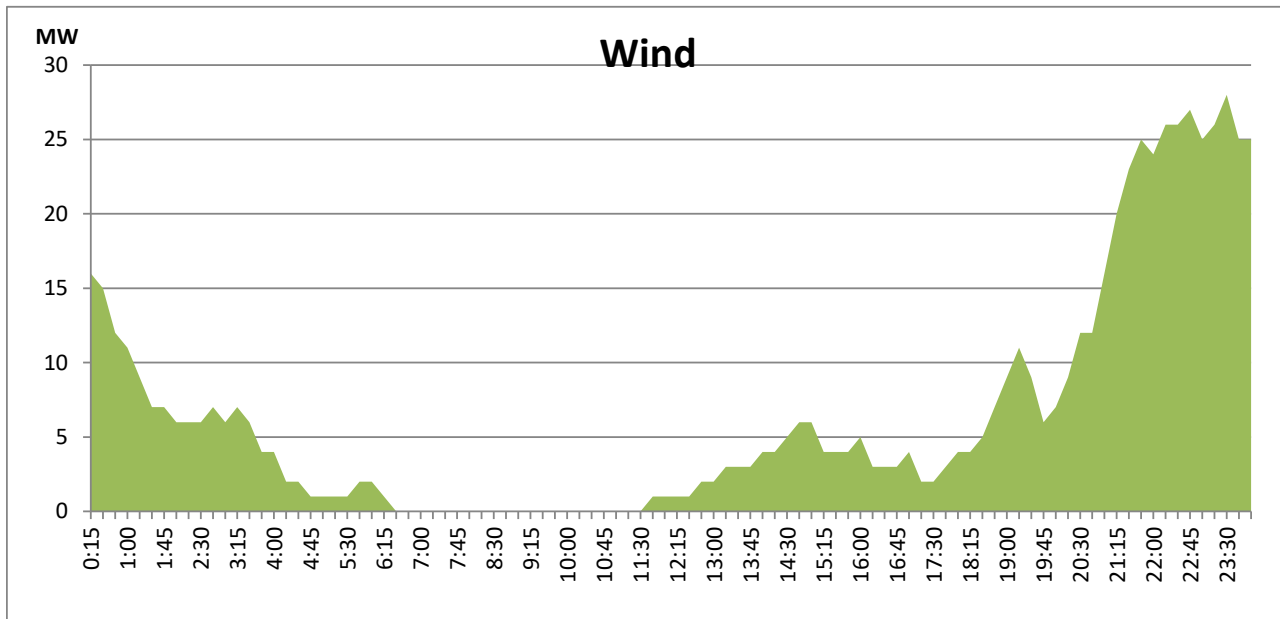
February 21, 2022



Wind Generation during the Previous day

February 21, 2022

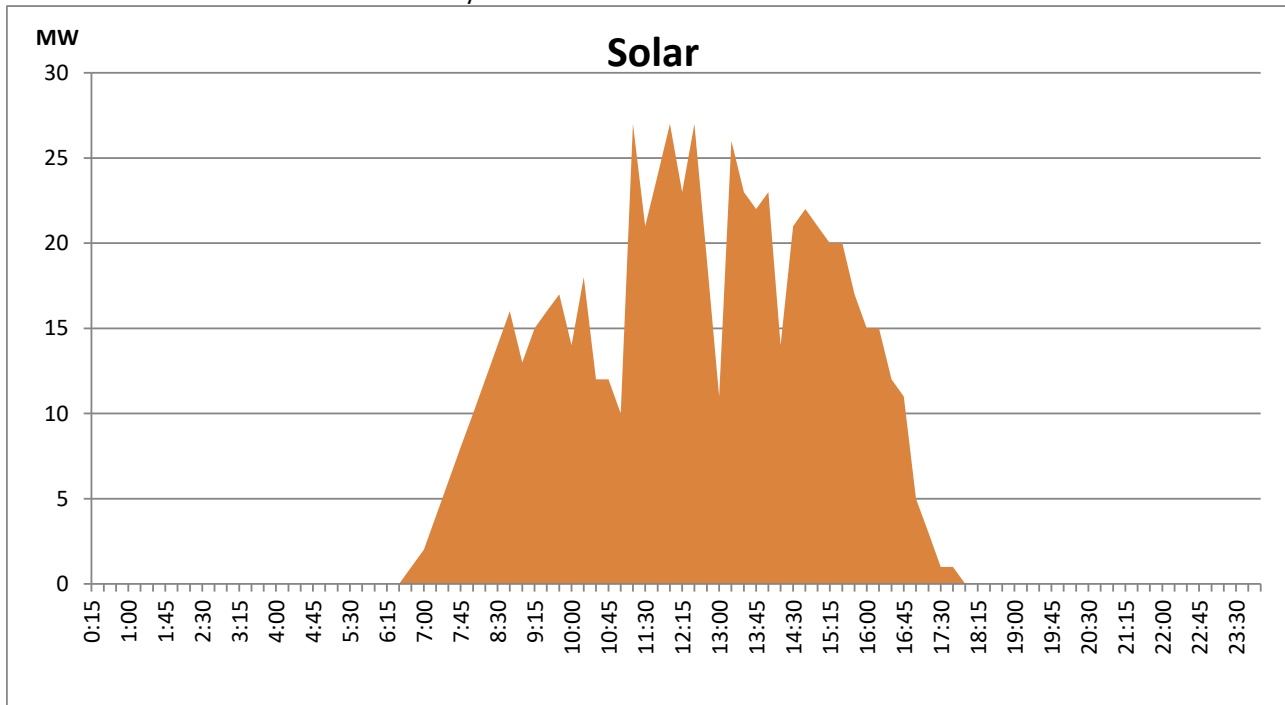
Based on Telemetered Power Stations only



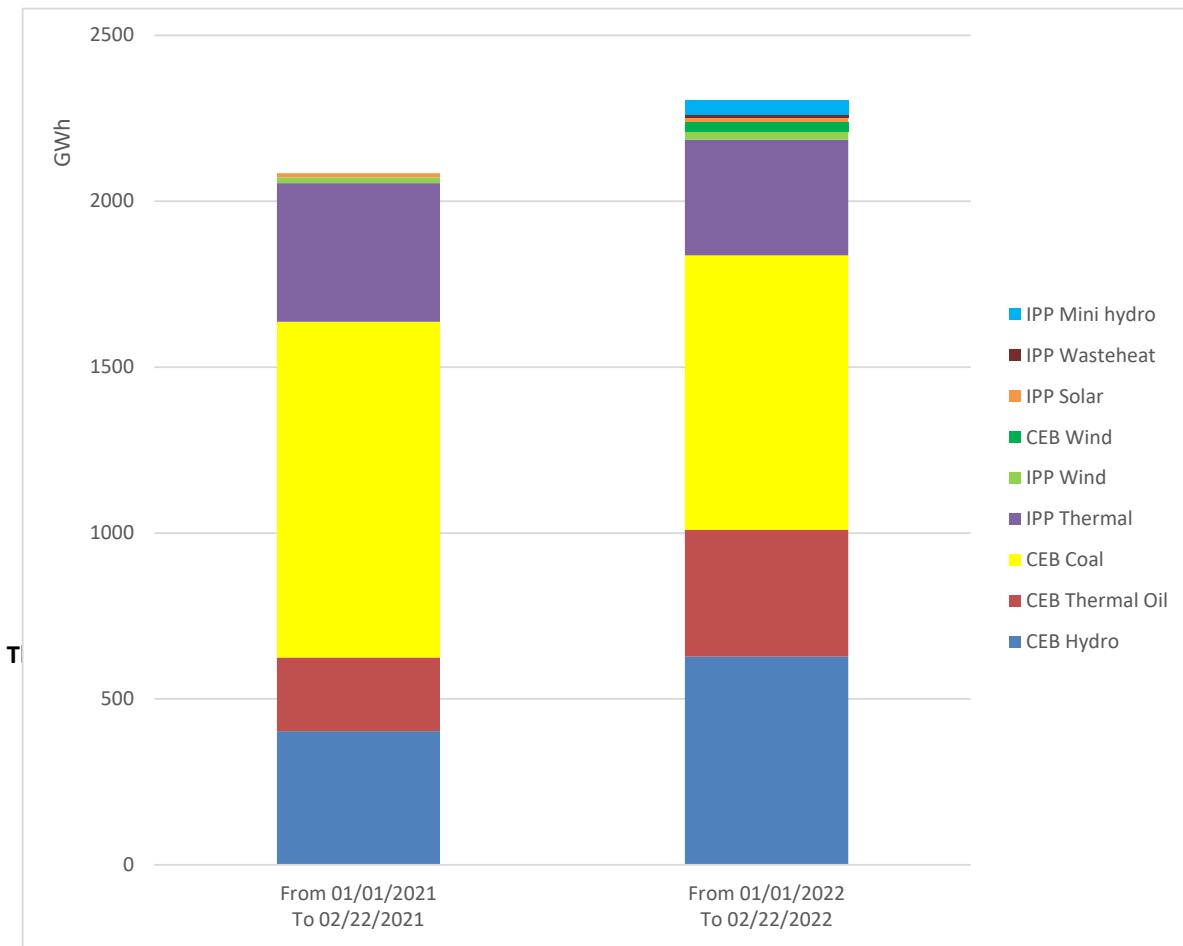
Solar Generation during the Previous day

February 21, 2022

Based on Telemetered Power Stations only



Cumulative Dispatch Comparison with Last Year



Power Station	Primary Fuel
CEB Thermal	
Sapugaskanda 1	Heavy Fuel
Sapugaskanda 2	Heavy Fuel
Kelanitissa Small Gas Turbines	Auto Diesel
GT 7 - Kelanitissa	Auto Diesel
Kelanitissa CCY	Naphtha & Diesel
Lakvijaya 1	Coal
Lakvijaya 2	Coal
Lakvijaya 3	Coal
Uthuru Janani	Heavy Fuel
Barge CEB	Heavy Fuel

Power Station	Primary Fuel
Private Thermal	
Sojitz - Kelanitissa	Auto Diesel
West Coast	Auto Diesel

Major Incidents during the day -as reported by CEB morning of

February 23, 2022

- 1) Ampara -Mahiyanganaya cct tripped from Mahiyanganaya end and tripped and A/R from Ampara end at 07:32hrs due to the operation of directional E/F protection. Cct restored at 08:36hrs .
- 2) Ampara GSS 132/33 T/F 03 tripped at 07:38hrs due to the operation of differential protection. T/F yet to be energized.
- 3) Kosgama -Kolonnawa cct tripped from both ends at 12:36hrs due to the operation of distance protection. The cct was restored at 12:50hrs.
- 4) West Coast Power plant performed a forced shutdown at 18:36hrs due to lack of fuel. WCP yet to resume generation.
- 5) Manual load shedding carried out from 16:30 hrs to 22:30 hrs .