

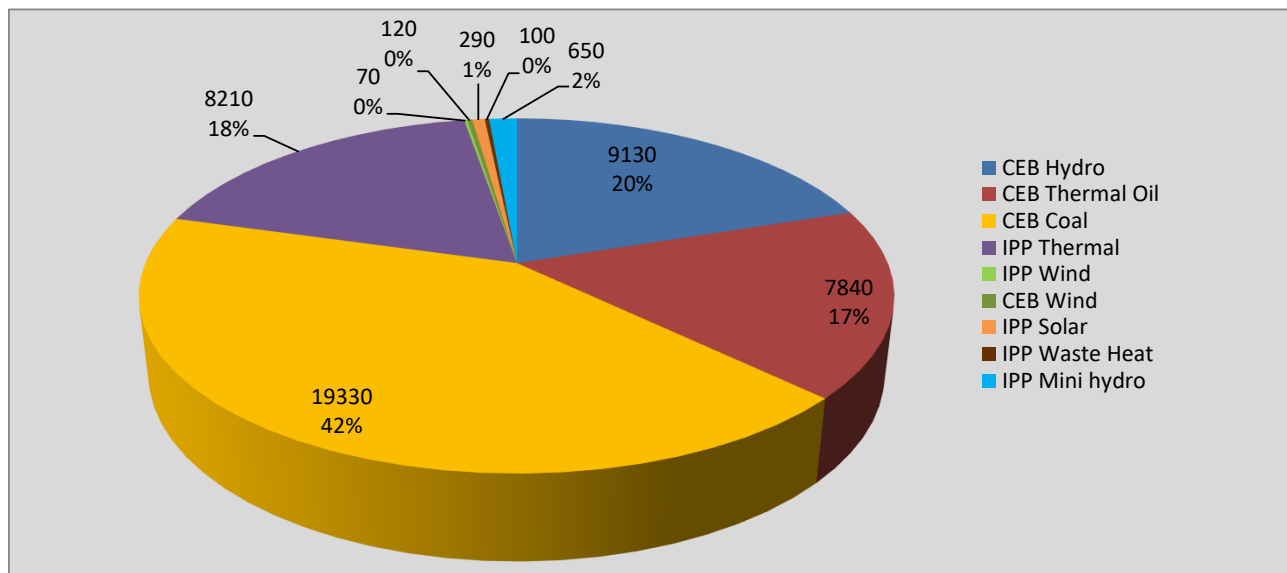
Generation and Reservoirs Statistics

February 21, 2022



PUBLIC UTILITIES COMMISSION OF SRI LANKA

Daily Generation Mix in MWh



Total Generation 45,740 MWh

Note: Above data is excluding contribution from Roof Top Solar, 1MW Solar and certain Mini Hydro plants

Cumulative Dispatch

Note: Following data is Excluding contribution from Roof Top Solar, 1MW solar and Mini Hydro plants

For Current Month

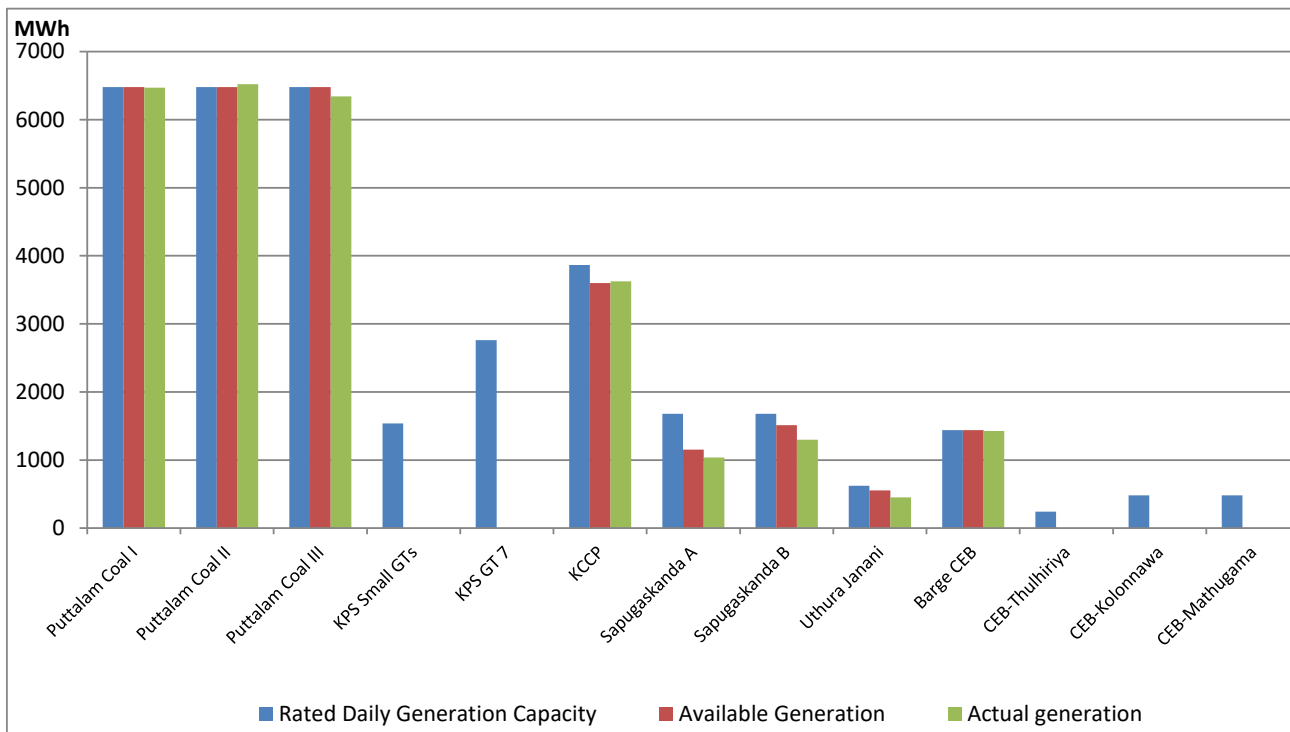
Category	Dispatch (GWh)	Percentage
CEB Hydro	209.8	22.81%
CEB Thermal Oil	130.3	14.17%
CEB Coal	399.8	43.46%
IPP Thermal	137.5	14.95%
SPP Wind	8.9	0.97%
CEB Wind	11.0	1.20%
SPP Solar	5.2	0.57%
SPP Solid Waste	1.4	0.15%
Mini Hydro	16.0	1.73%
Total	919.9	

For Current Year

Category	Dispatch (GWh)	Percentage
CEB Hydro	617.1	27.30%
CEB Thermal Oil	374.4	16.57%
CEB Coal	807.1	35.71%
IPP Thermal	341.6	15.11%
SPP Wind	24.2	1.07%
CEB Wind	29.1	1.29%
SPP Solar	13.2	0.58%
SPP Solid Waste	9.5	0.42%
Mini Hydro	44.1	1.95%
Total	2,260.1	

CEB owned Thermal Plant Dispatch

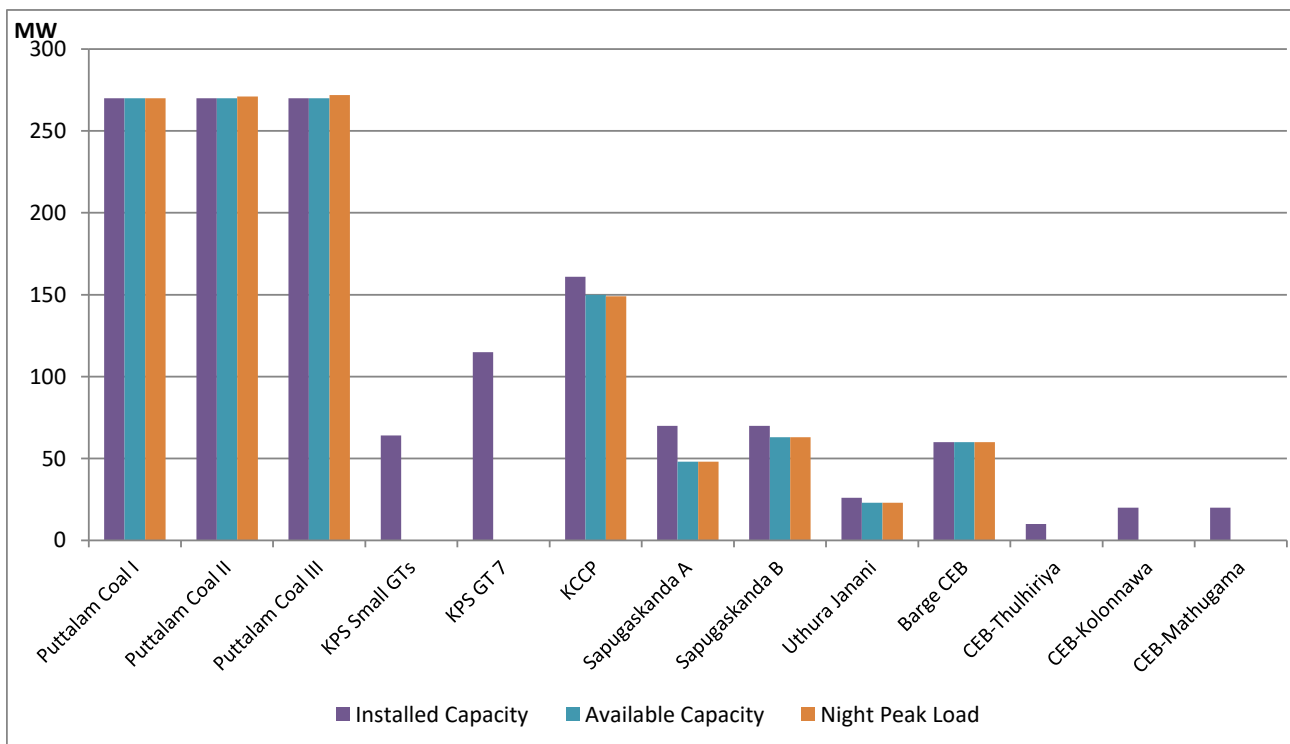
February 21, 2022



Available Generation is estimated based on plant availability at 6.00am on

February 22, 2022

CEB owned Thermal Plant Loading at the Night Peak



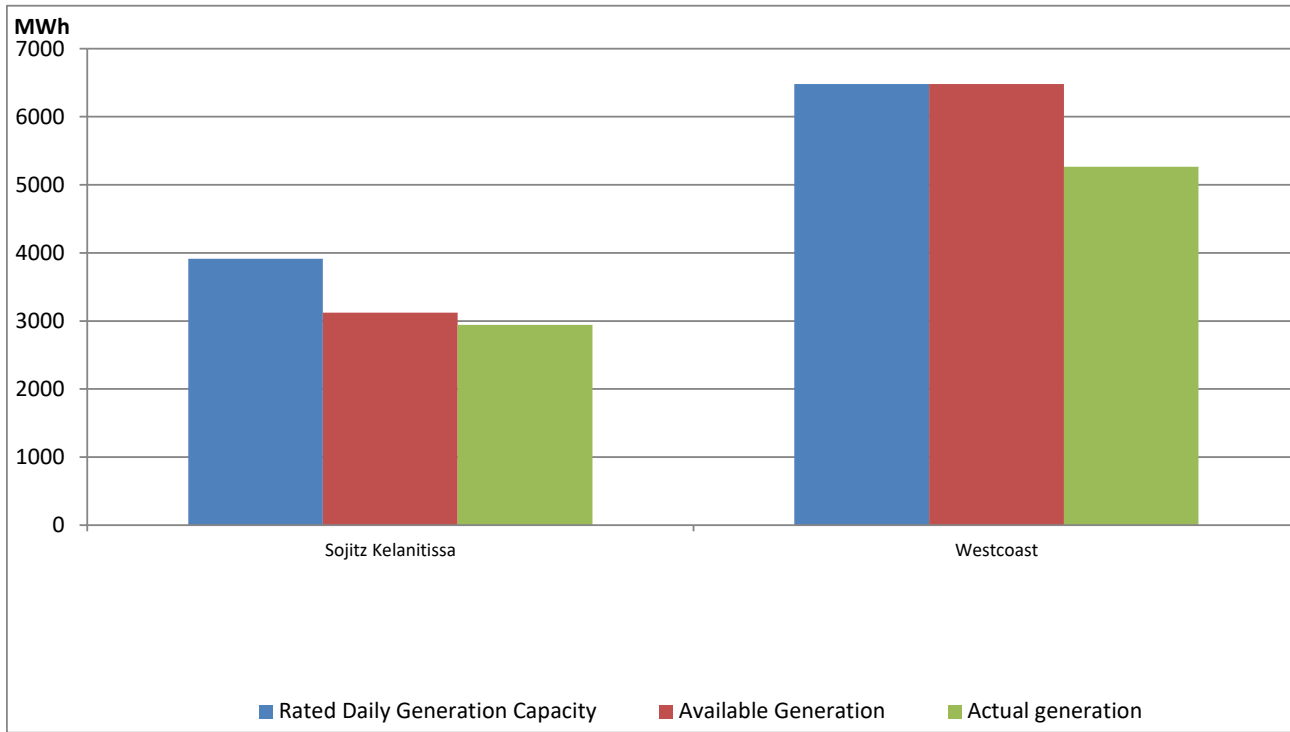
Note- Plant availability is recorded at 6.00 am on

February 22, 2022

IPP owned Thermal Plant Dispatch

February 21, 2022

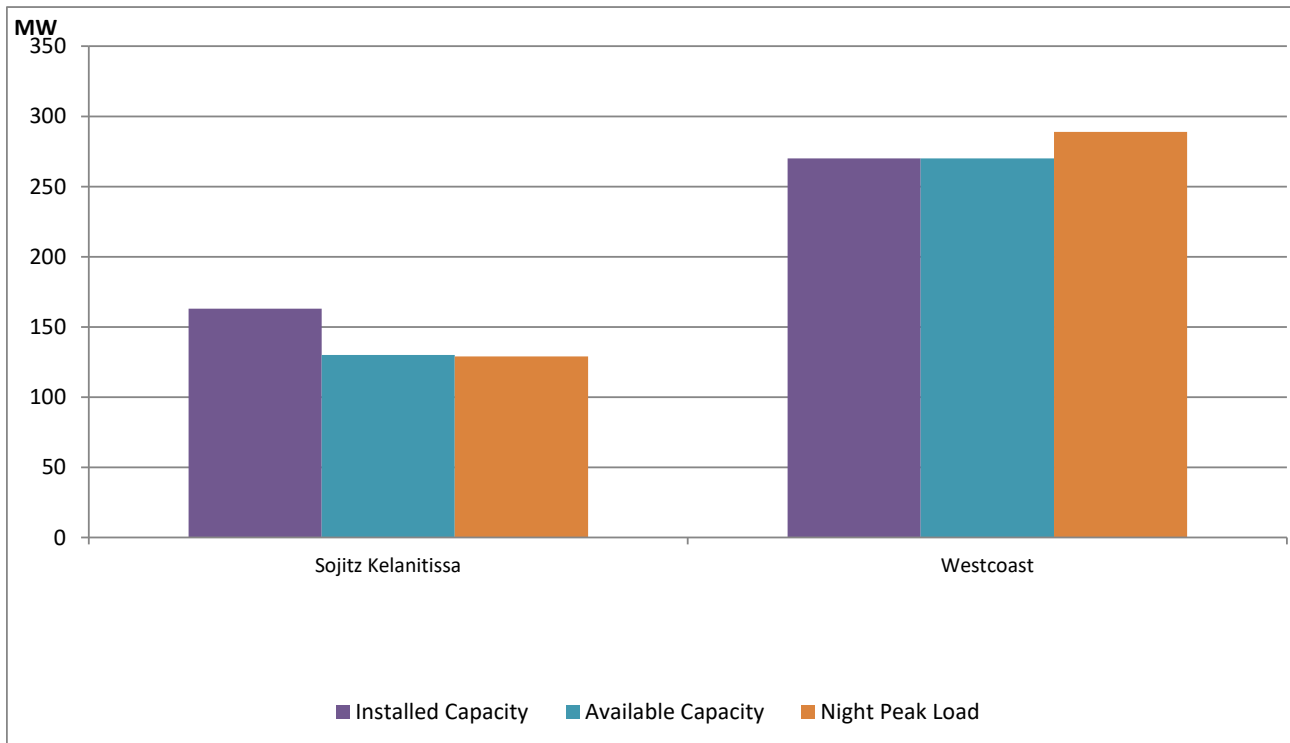
ACE Embilipitiya, ACE Matara, Asia Power, V Power Pallekale, Vpower Galle, V Power Horana, Vpower Hambantota, Vpower Valachchena and Altaqa Mahiyanganaya are not available due to expiration of PPAs



Available Generation is estimated based on plant availability at 6.00am on

February 22, 2022

IPP owned Thermal Plant Loading at the Night Peak

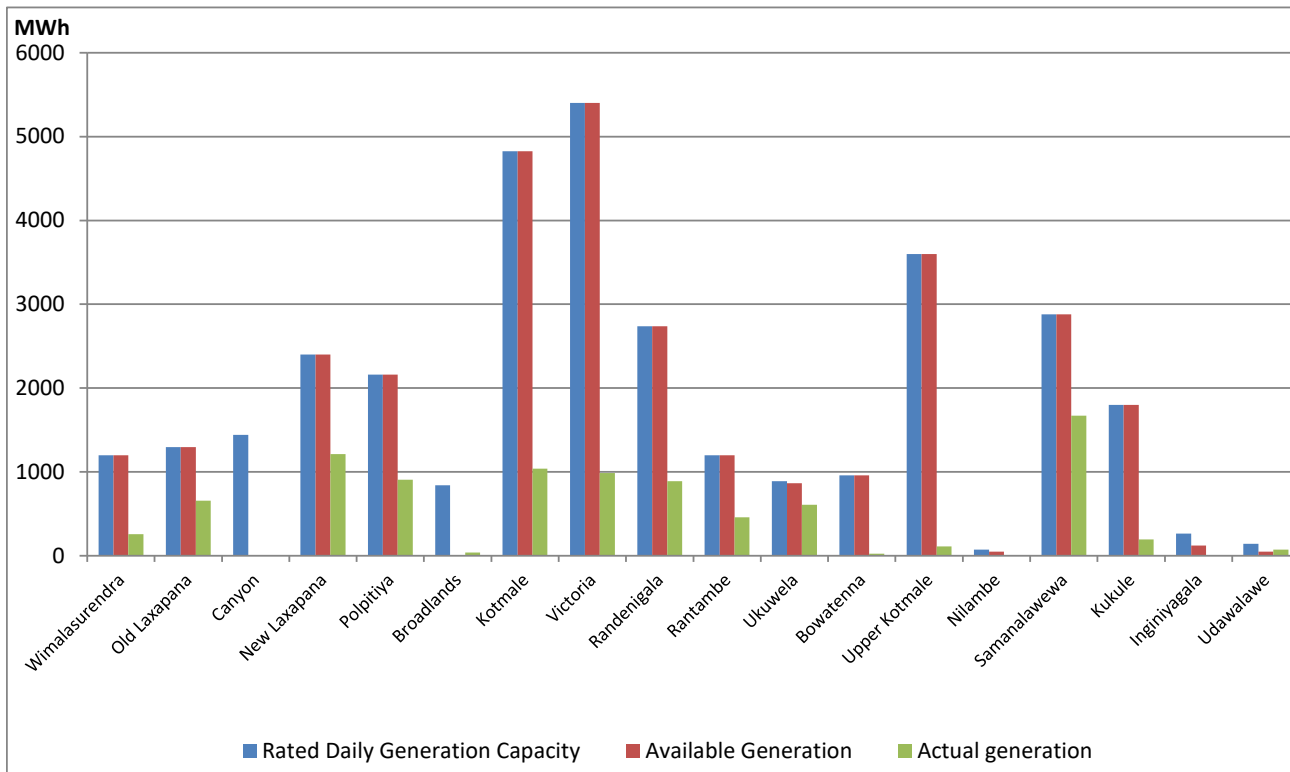


Note- Plant availability is recorded at 6.00 am on

February 22, 2022

Major Hydro Plant Dispatch

February 21, 2022

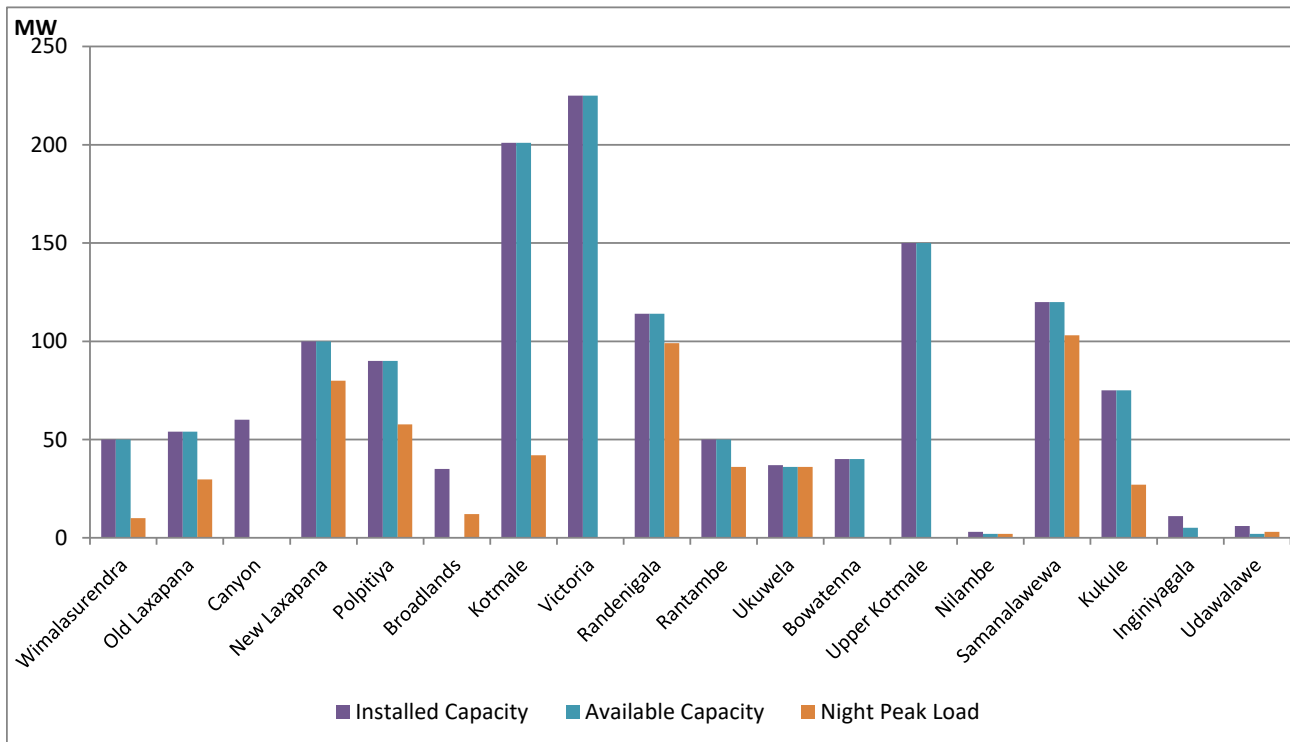


Available Generation is estimated based on plant availability at 6.00am on
Broadlands power plant is operating in the Commissioning Stage

February 22, 2022

Major Hydro Plant Loading at Night Peak

February 21, 2022



Note- Plant availability is recorded at 6.00 am on
Broadlands power plant is operating in the Commissioning Stage

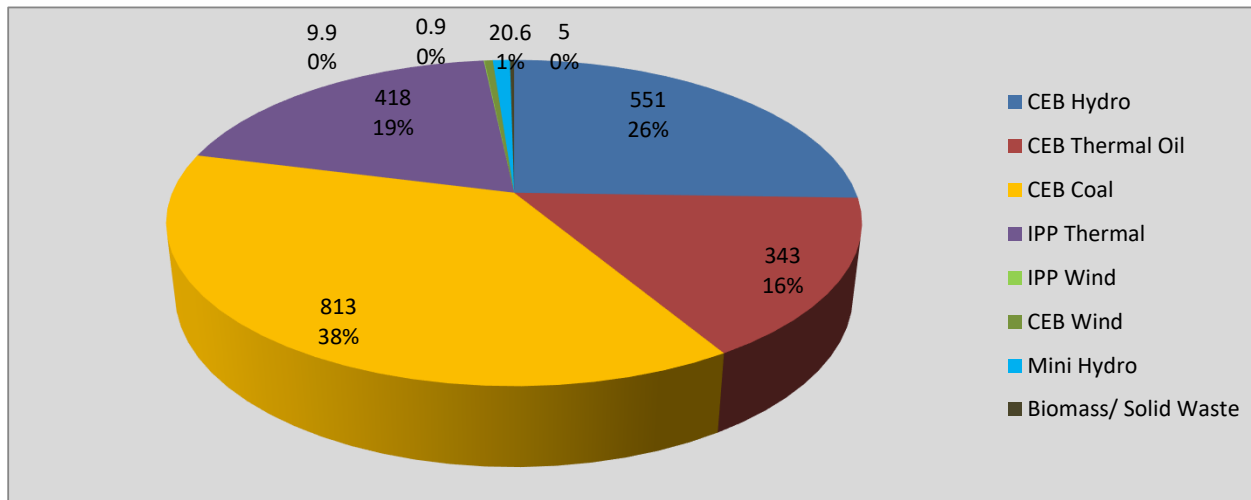
February 22, 2022

Summary of Major Plant performance

Plant	Installed Capacity (MW)	Plant Availability (MW)	Night peak Load (MW)	Plant Dispatch (MWh)
Wimalasurendra	50	50	10	257
Old Laxapana	54	54	30	657
Canyon	60	0	0	0
New Laxapana	100	100	80	1,213
Polpitiya	90	90	58	906
Broadlands	35	0	12	38
Kotmale	201	201	42	1,040
Victoria	225	225	0	985
Randenigala	114	114	99	888
Rantambe	50	50	36	460
Ukuwela	37	36	36	607
Bowatenna	40	40	0	26
Upper Kotmale	150	150	0	111
Nilambe	3	2	2	5
Samanalawewa	120	120	103	1,671
Kukule	75	75	27	196
Inginiyagala	11	5	0	0
Udawalawe	6	2	3	72
Puttalam Coal I	270	270	270	6,471
Puttalam Coal II	270	270	271	6,522
Puttalam Coal III	270	270	272	6,340
KPS Small GTs	64	0	0	0
KPS GT 7	115	0	0	0
KCCP	161	150	149	3,624
Sapugaskanda A	70	48	48	1,037
Sapugaskanda B	70	63	63	1,297
Uthura Janani	26	23	23	450
Barge CEB	60	60	60	1,428
CEB-Thulhiriya	10	0	0	0
CEB-Kolonnawa	20	0	0	0
CEB-Mathugama	20	0	0	0
Sojitz Kelanitissa	163	130	129	2,941
West Coast	270	270	289	5,266
Total	3,280	2,868	2,148	45,736

Plant availability is the availability recorded at 6 am on

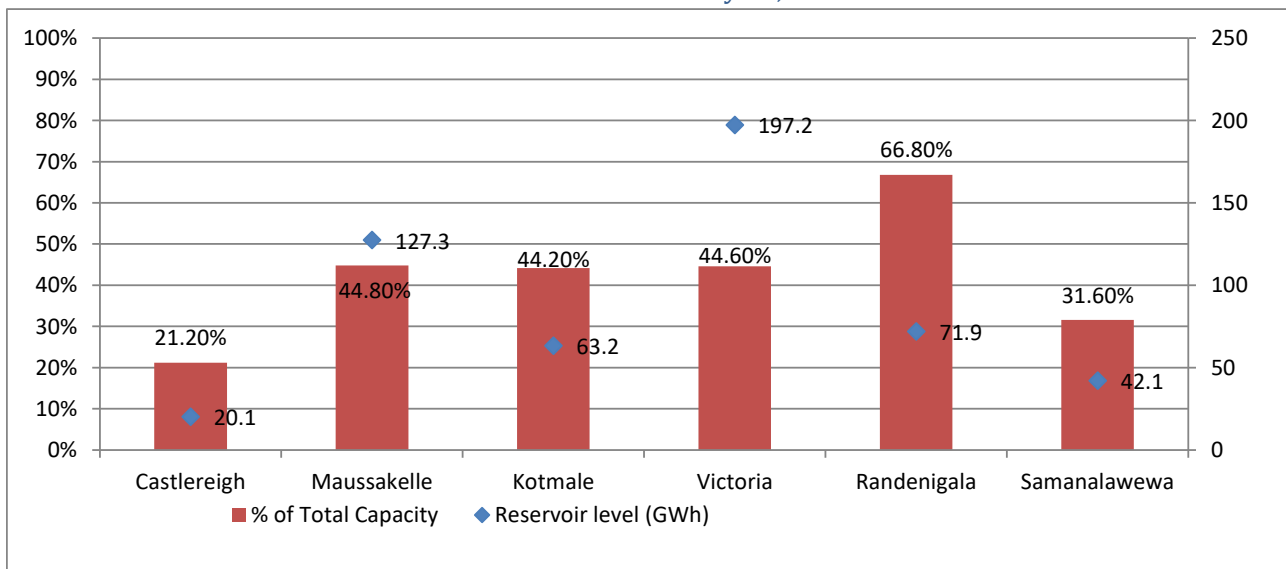
February 22, 2022



Night Peak*	2,161.8 MW
Day Peak	2,324.4 MW
Minimum Demand	1,339.6 MW

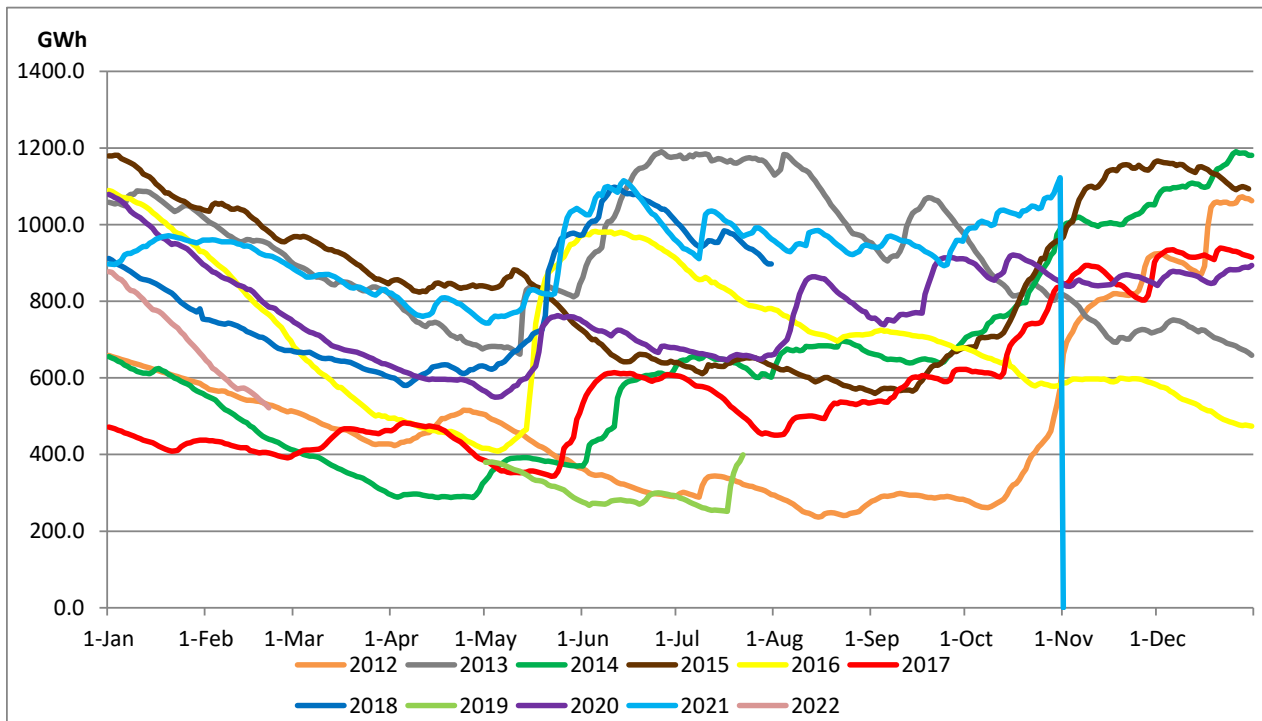
Above figures are excluding contribution from Roof Top Solar, 1MW solar, certain Wind plants and Mini Hydro plants

Reservoir Levels - as at 06.00 Hr on February 22, 2022



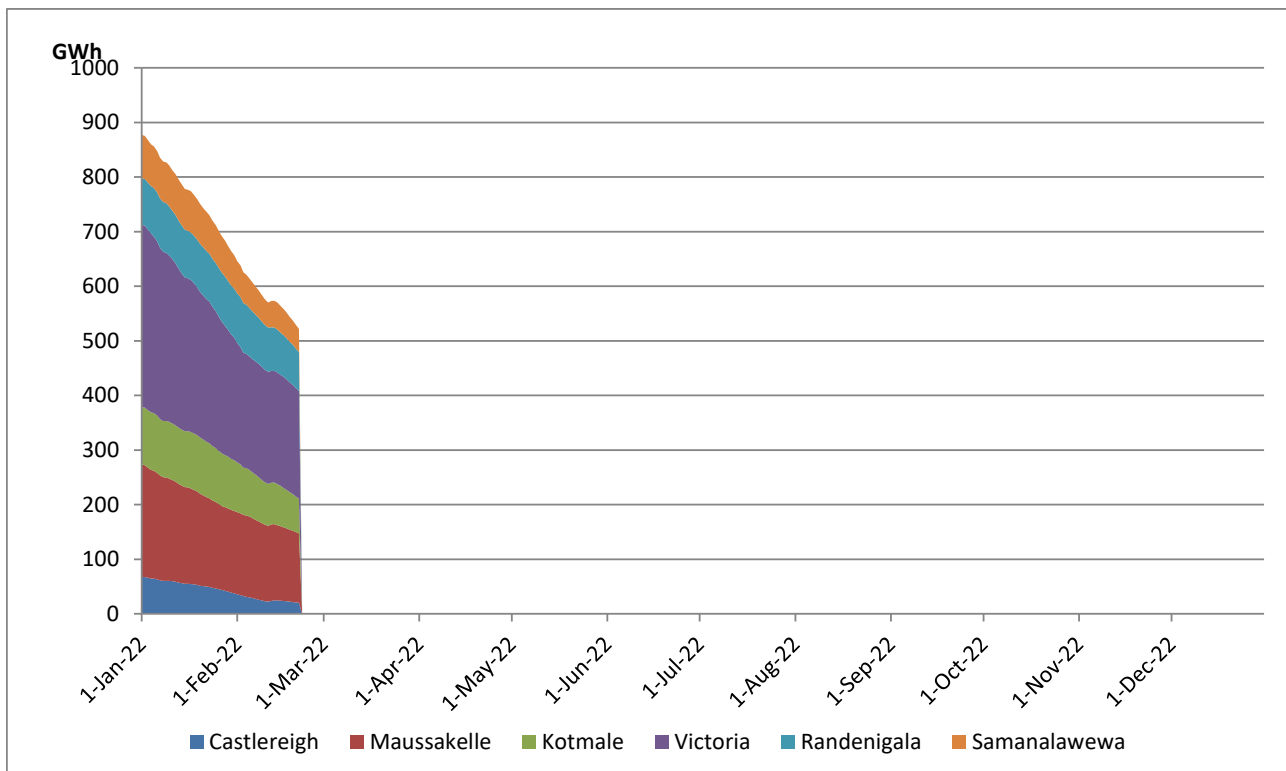
Total Reservoir Level(GWh)	521.8
% of Total capacity	42.2%

Comparison of Total Reservoir Storage Levels with Past Years

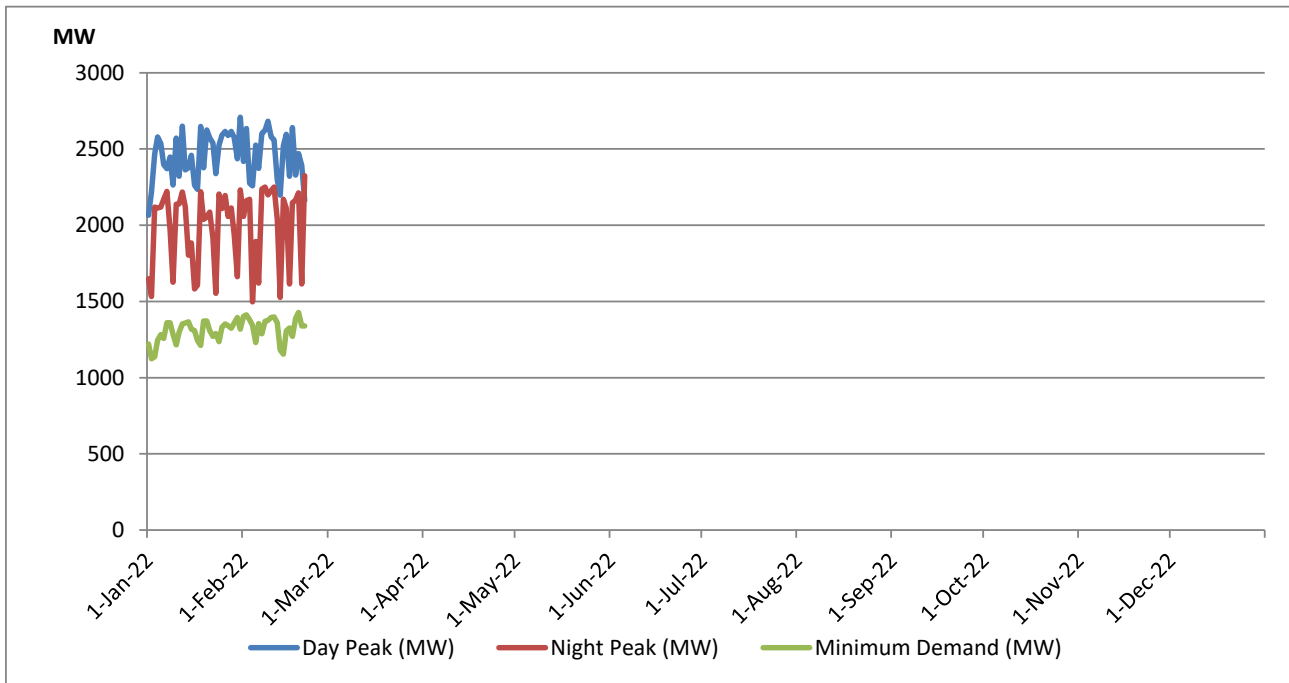


Data for 2018 and 2019 are only available for part of year.

Variation of Major Hydro Reservoir Levels in the current year (GWh)



Variation of Demand during the current year

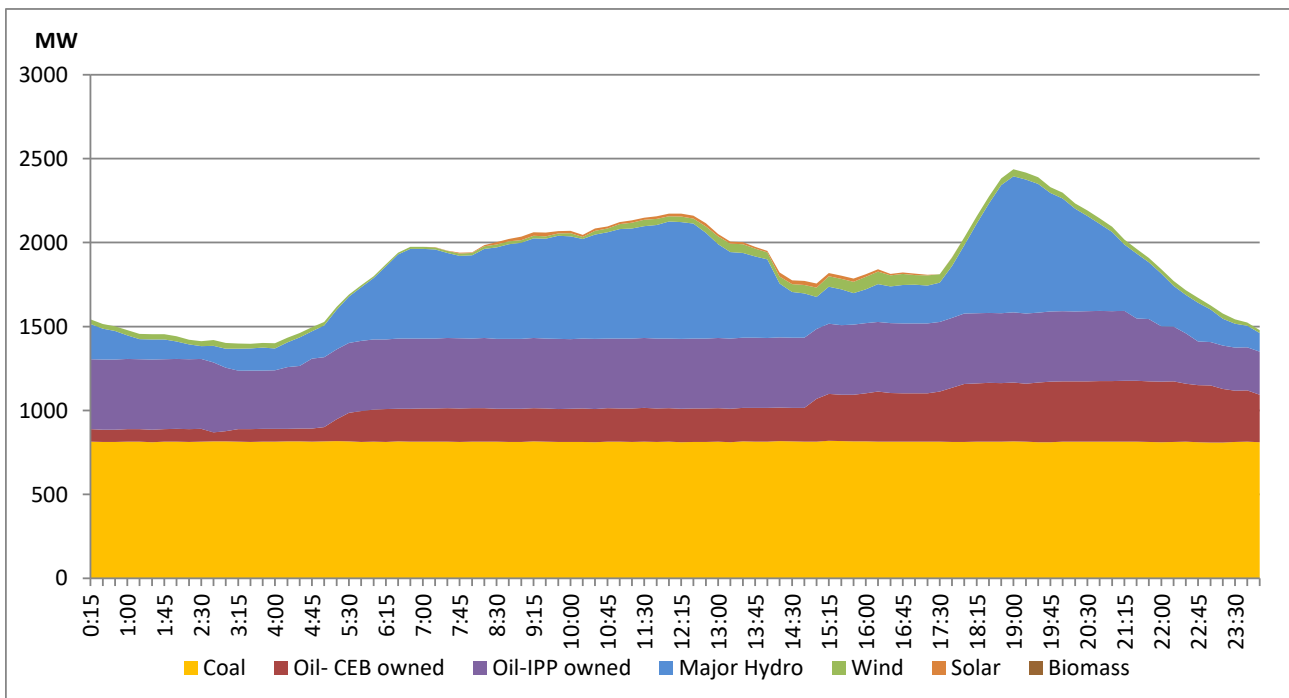


The above figures are excluding contribution from Roof Top Solar, 1MW solar, certain Wind plants and Mini Hydro plants

Daily Load Curve of the Previous day

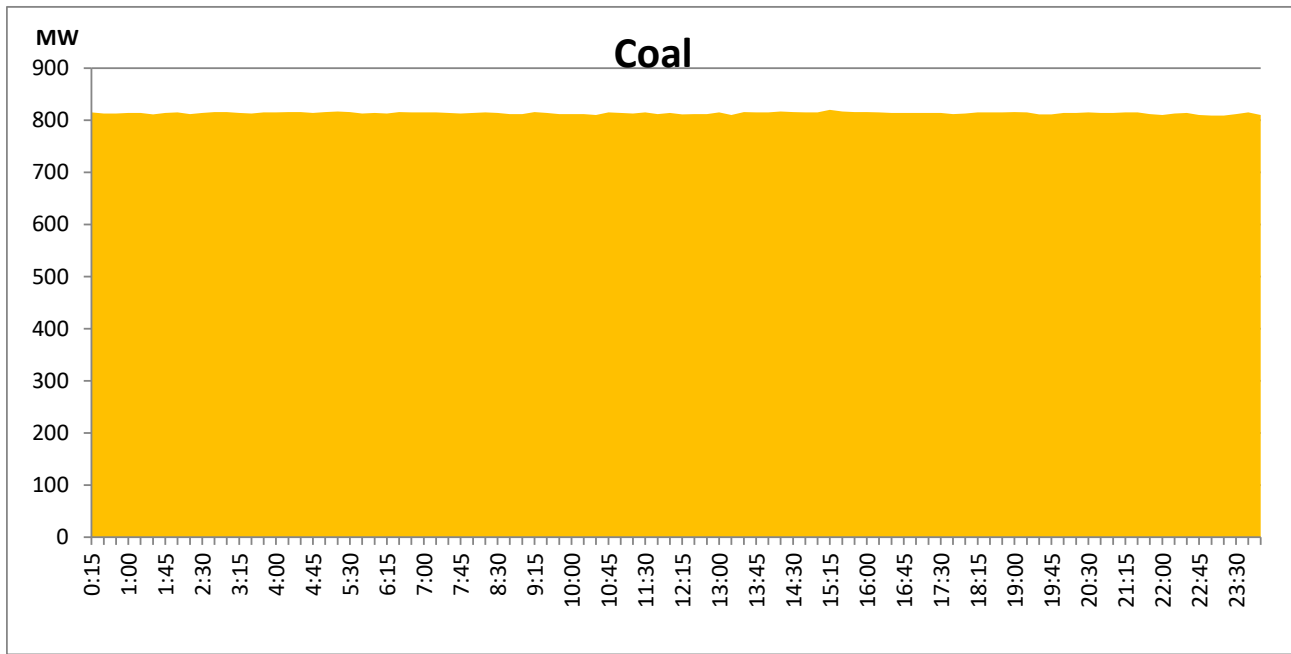
February 20, 2022

Solar and wind data is based on Telemetered Power Stations only



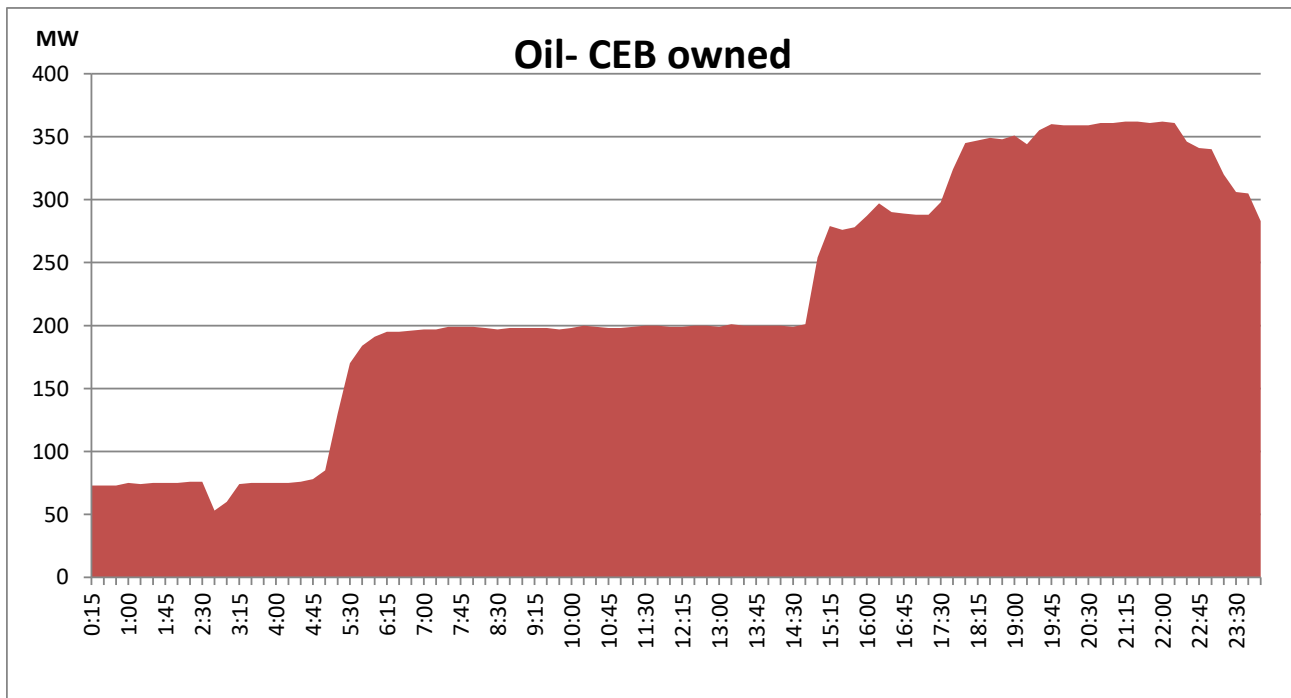
Coal Generation during the Previous day

February 20, 2022



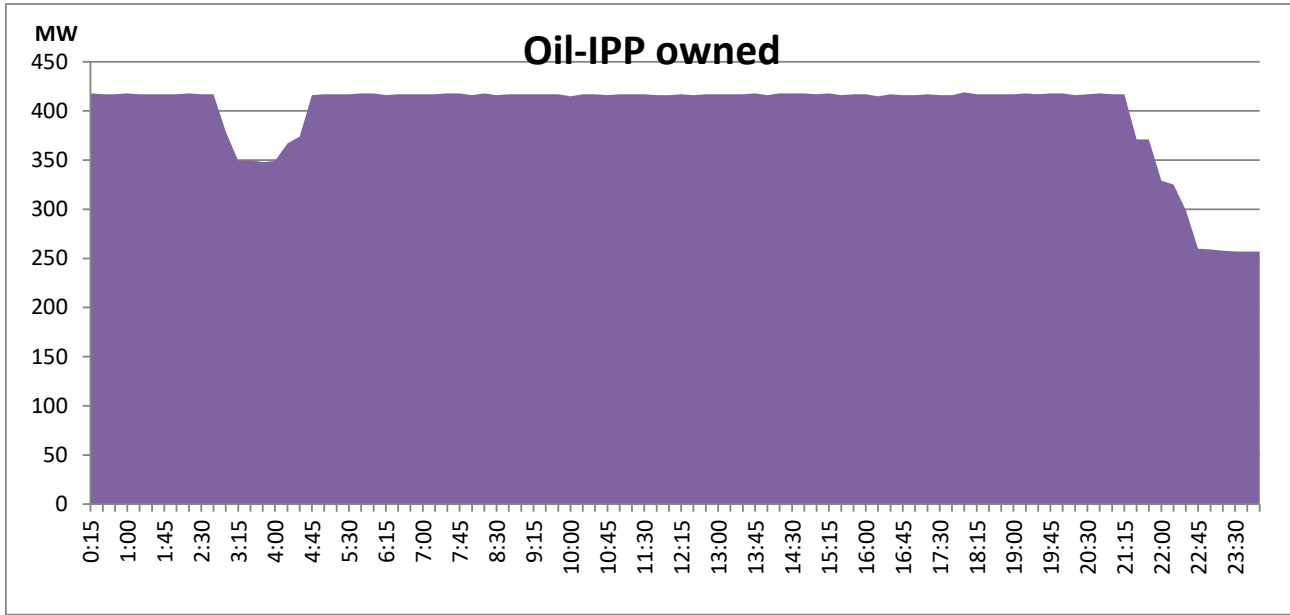
CEB Oil Plant Generation during the Previous day

February 20, 2022



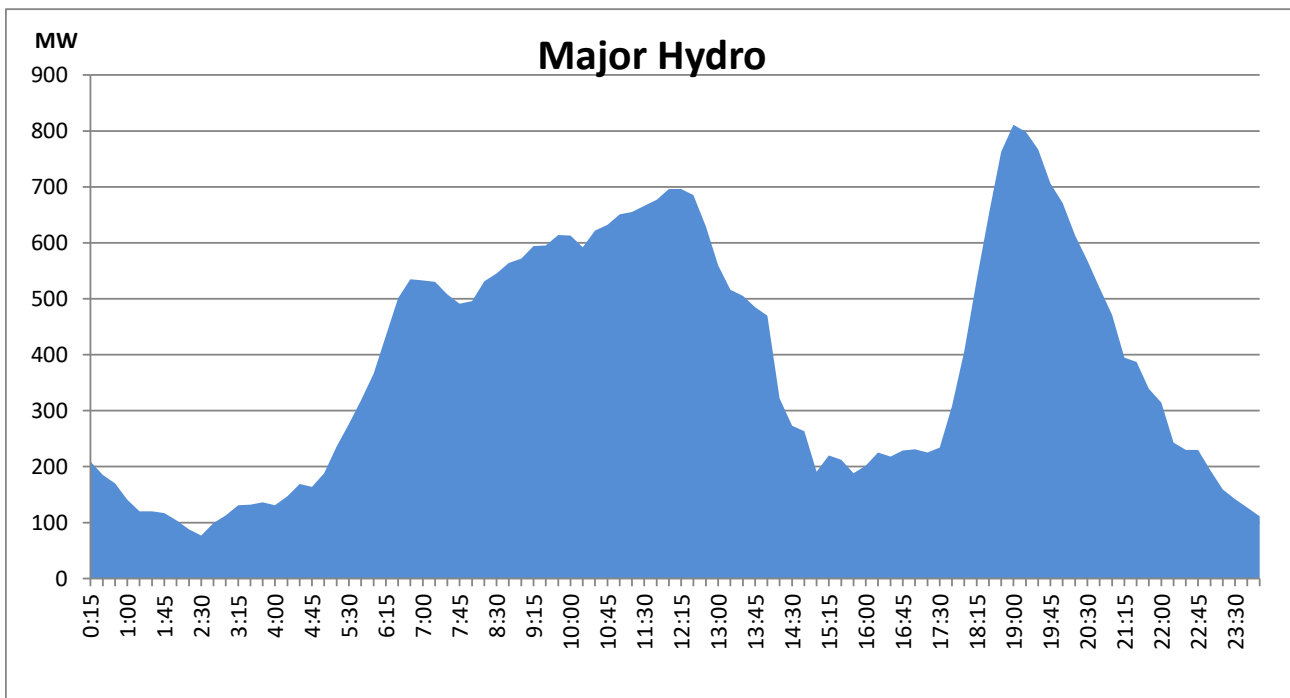
IPP Oil Plant Generation during the Previous day

February 20, 2022



Major Hydro Generation during the Previous day

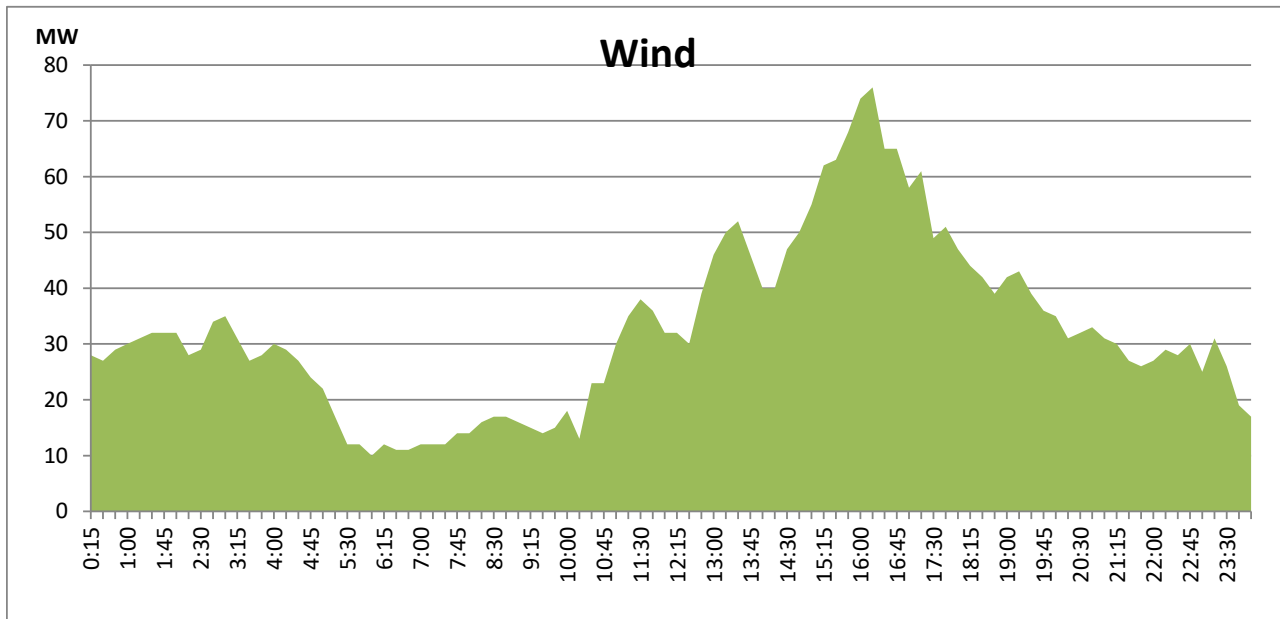
February 20, 2022



Wind Generation during the Previous day

February 20, 2022

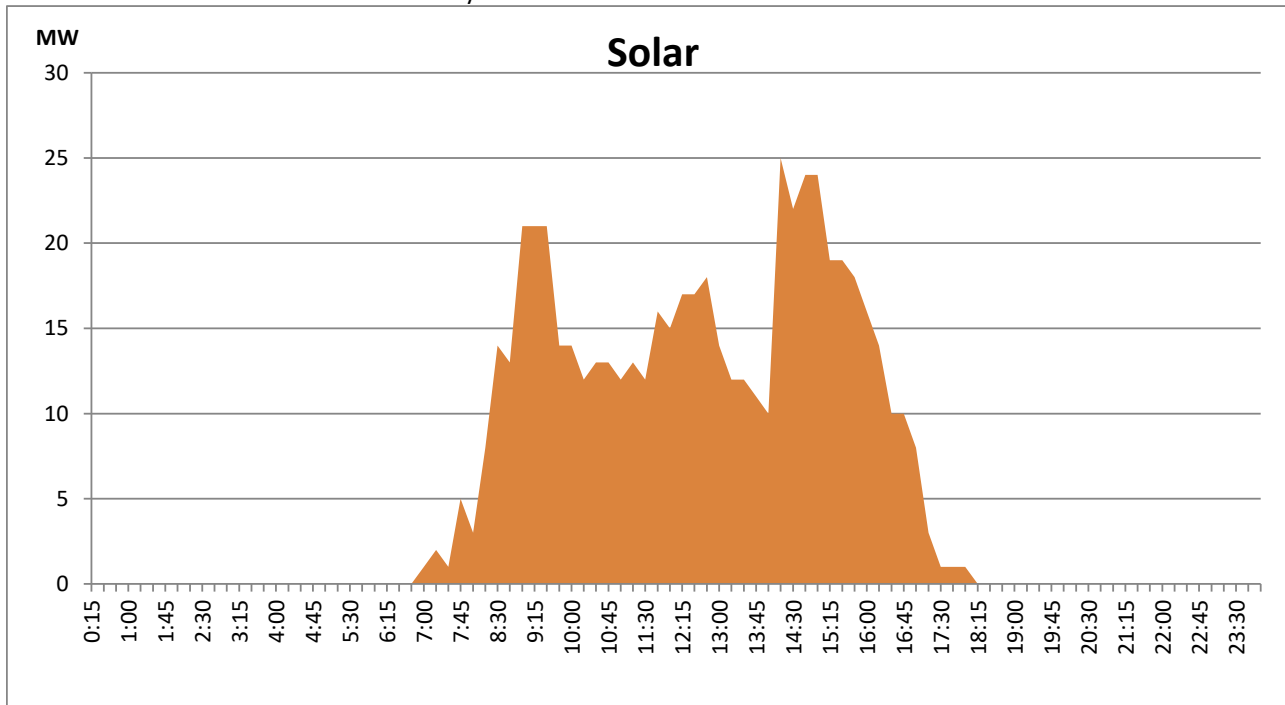
Based on Telemetered Power Stations only



Solar Generation during the Previous day

February 20, 2022

Based on Telemetered Power Stations only



Thermal Plant Fuel types

Power Station	Primary Fuel
CEB Thermal	
Sapugaskanda 1	Heavy Fuel
Sapugaskanda 2	Heavy Fuel
Kelanitissa Small Gas Turbines	Auto Diesel
GT 7 - Kelanitissa	Auto Diesel
Kelanitissa CCY	Naptha & Diesel
Lakvijaya 1	Coal
Lakvijaya 2	Coal
Lakvijaya 3	Coal
Uthuru Janani	Heavy Fuel
Barge CEB	Furnace Oil

Power Station	Primary Fuel
Private Thermal	
Sojitz - Kelanitissa	Auto Diesel
West Coast	Low Sulphur Furnace oil

Major Incidents during the day -as reported by CEB morning of

February 22, 2022

Net system Daily Inflow

GWh

Major Incidents